

# The Edward Young Collection of Gibraltar

## Postal History

- 1 ☒ 1784 to 1914, a selection of covers and cards, incl. 1790 entire from Madrid to Gibraltar, bearing circular framed “7”, the letter asking for confirmation of sighting of a Russian fleet, 1842 entire written from “*H.M.S. Vanguard, Malta Harbour*” to London, bearing small curved “GIBRALTAR”, postal stationery, etc., mixed condition. (19 items).  
£250-£300
- 2 ▲ 1792 printed document “DUTIES PAYABLE AT TETUAN AND TANGIER” and “ORDERS TO BE OBSERVED BY OUR SERVANTS AT TETUAN AND TANGIER RESPECTING THE ENGLISH”, an interesting item. Photo. £100-£120
- 3 ☒ 1796 (June 12) entire from Dijon addressed to Tangier via Cadiz, showing “20/DIJON” and “PARIS” handstamps, unusual. Photo. £100-£120
- 4 ☒ 1839 entire to London with manuscript “5/-” rate mark, curved “GIBRALTAR/PAID” in black, also red curved framed “FOREIGN PAID” and arrival tombstone, a few filing creases, otherwise fine. Photo. £150-£200
- 5 ☒ 1851 (June 26) entire to London with manuscript “*Per Arabian*” and “8” rate mark, backstamped “GIBRALTAR/1851 JU 26/SHIP LETTER” in blue, also framed “6 JY 1851/LIVERPOOL/SHIP”, scarce. Photo. £200-£250

## 1886 (Jan.) “GIBRALTAR” Overprints

- 6 ☆ ½d. to 1s. set unused, a few with part original gum, fair to fine. S.G. 1-7, cat. £1,100. Photo. £150-£180
- 7 ○ ½d. to 1s. set with extra 1d. showing broken “G” in “GIBRALTAR” and 2½d. overprint in blue-black, used, fair to fine. S.G. 1-7, cat £850+. Photo. £250-£300
- 8 ☆ 1d. rose-red, showing variety indented frame at top [53] (*See Ludington page 244*) unused without gum, fine. S.G. 2 var. unlisted. Photo. £100-£120
- 9 ★ 2½d. ultramarine, (2) one with overprint in blue-black, both good mint. S.G. 4, a, cat £660. Photo. £140-£160
- 10 ○ 2½d. ultramarine with variety watermark inverted, used, slight crease, otherwise fine. S.G. 4w, cat £450. Photo. £120-£150

## 1886 (Nov.)–87 Issue

- 11 ★ ½d. to 1s. with additional 2½d. showing watermark inverted, mainly good to fine mint. S.G. 8-14, cat £825. Photo. £150-£200
- 12 ○ ½d. to 1s. set with additional 2½d. showing watermark inverted, used, mainly good to fine used. S.G. 8-14, cat £450. Photo. £100-£120
- 13 ○ ½d. dull green with variety watermark inverted, used, slightly toned, otherwise fine and unlisted. S.G. 8 var. Photo. £200-£300
- 14 ○ 1d. rose showing variety “T” of “GIBRALTAR” failing to print with break in frame line below, used, minor soiling, otherwise fine and rare. S.G. 8 var. Photo. £500-£600
- 15 ★ 2d. brown-purple with variety watermark inverted, fine mint, scarce. S.G. 10w, cat £400. Photo. £150-£200

## 1889 (Aug.) Surcharges

- 16 ★ A mainly mint selection, incl. complete set, varieties with 25c. on 2d. with small “T” (2, both in pair with normal), broken “N”, 50c. on 6d. (2) and 75c. on 1s. showing “5” with short foot, etc., varied condition. (20). £200-£250
- 17 ○ A used collection, incl. complete set, varieties with 25c. on 2d. pair one with small “T”, also single with broken “N”, 25c. on 2½d. with small “T”, another with broken “N”, etc., mainly good to fine. (16). £200-£250
- 18 ★ 5c. on ½d. to 75c. on 1s. set all marginal and showing plate number “1”, 5c. on ½d., 10c. on 1d. and 25c. on 2½d. bright blue are mounted, others mounted in margin only, mainly fine. Photo. S.G. 15-21, cat £180+. Photo. £100-£120



Ex 19



21



22



Ex 23



28



29



20



Ex 27



30



31

## Gibraltar: 1889 Surcharges continued

- 19 ○ 5c. on ½d., 25c. on 2d., 25c. on 2½d., 50c. on 6d. and 75c. on 1s. all showing “5” with short foot, used, mainly fine. S.G. 15a, 17a, 18a, 20a, 21a, cat £272. Photo. £100-£120
- 20 ☛ 25c. on 2d. brown-purple in an unmounted mint part sheet (6 x 10), incl. varieties “5” with short foot (all stamps in second vertical row), one short “I” and another with broken “N”, a few creases and very minor tone spots, otherwise fine. S.G. 17, a, ab, b, cat £528+. Photo. £150-£200
- 21 ★ 25c. on 2½d. bright blue showing variety small “I” [R. 6/2], fine mint. S.G. 18ab, cat £325. Photo. £100-£120
- 22 ★ 25c. on 2½d. bright blue showing variety broken “N” [R. 10/5], fine mint. S.G. 18b, cat £325. Photo. £100-£120

## 1889 (Oct.)–96 Spanish Currency

- 23 ★ 5c. to 5p. set, with additional 5c. (2, one with broken “M”, the other with inverted watermark), 20c. olive-green (2, one with flat top to “C”), 25c. pair, 40c. pair, mainly fine mint. (19). S.G. 22, 22a, 22w, 23, 25a, 25-33. Photo. £250-£300
- 24 ○ 5c. to 5p. set with extra 5c. with broken “N”, 20c., 25c., 50c. on piece, 75c. on piece, and 5p, used, fair to fine. S.G. 22-33. £120-£150



25



26

- 25 ★ 10c. carmine, the rare VALUE OMITTED variety, mint, slight colour run at foot, otherwise fine. R.P.S. certificate (1939). S.G. 23b, cat £5,500. Photo also on back cover. £2,500-£3,000
- 26 ○ 10c. carmine, showing duty tablet grossly misplaced to lower-right, used, a few blunted perfs, otherwise fine. One of only two used examples recorded. Ex North. S.G. 23 var. Photo also on back cover. £700-£800
- 27 ▲ 10c. carmine, bisected and used on small piece, tied by “RABAT” duplex, and 40c. orange brown, bisected and used on part 1892 (Sept. 17) envelope with 5c. tied by “TANGIER/A26” duplex, fair to good £150-£200
- 28 ☒ 10c. carmine, bisected and used on 1897 (Feb 14) envelope with 20c. just tied by “GIBRALTAR” c.d.s., with handstruck “T” and “1d/F.B./C.” due marks, a few cover faults and red ink stains, scarce. S.G. 23 var. Photo. £400-£500
- 29 ☒ 10c. carmine, bisected and used on 1897 (Dec. 24) envelope with 20c., tied by “GIBRALTAR/A26” duplex, part of address crossed out and “Gibraltar” added, some staining, otherwise fine. S.G. 23 var. Photo. £400-£500
- 30 ☒ 10c. carmine bisected and used on 1892 5c. stationery card to London, tied by forged “TANGIER/A26” duplex with many cuttings and research notes into this interesting fake, fair to fine. £150-£200
- 31 ☒ 50c. bright lilac, bisected and used on 1892 (Aug. 12) envelope to Germany, tied by “TANGIER/A26” duplex with “GIBRALTAR” c.d.s. alongside, has Madrid and Stadthagen transit marks on reverse. S.G. 28 var. Photo. £500-£600
- 32 1898 (Oct.) Sterling Currency ½d. to 1s. set with extra 4d. and 6d. both with minor flaws, also 2½d. with watermark inverted (unused and soiled), mainly fine mint. S.G. 39-45. £100-£120





Ex 33



Ex 34



Ex 35



43



44



36



37



40



42



38



41



45



46



47



48



49

## Gibraltar: King Edward VII Issues

- 33 ★ 1903 Watermark Crown CA ½d. to £1 set with additional 2½d. showing large “2” in “½”, mainly fine mint, the £1 with small adherence on surface at top. S.G. 46-55, cat £1,200. Photo. £300-£350
- 34 ★ 1904-08 Watermark Multiple Crown CA ½d. to £1 set with ½d. to 2s. chalk surfaced papers, mainly fine mint. (15). S.G. 56-64, cat £1,041. Photo. £300-£350
- 35 ○ - ½d. to £1 set used, the £1 has a Madam Joseph faked cancellation, mainly fine. S.G. 56-64. Photo. £250-£300
- 36 ☒ - 1d. dull purple on red, bisected and used locally on 1906 (July 5) postcard (slight crease), fine and scarce. S.G. 57a, cat £1,500. Photo. £450-£500
- 37 ○ - 1d. dull purple on red, variety watermark inverted, used, has pinhole, otherwise fine and scarce. S.G. 57bw, unpriced. Photo. £100-£120
- 38 ★ ☒ - 2½d. purple and black on blue, mint block of four, one showing large “2” in “½” fine. S.G. 59a, cat £705. Photo. £200-£220



- 39 ○ 1906-12 Watermark Multiple Crown CA 1d. carmine with variety watermark sideways, in a fine used pair, extremely rare. R.P.S. certificate (2002). S.G. 67a, cat £7,000+. Photo also on back cover. £5,000-£6,000
- 40 ○ - 1d. carmine with variety watermark inverted, fine used. S.G. 67w, cat £550. Photo. £300-£350
- 41 ☒ - 6d. dull and bright purple in an unmounted mint irregular block of twenty, mainly fine, an extremely rare multiple, one of the largest known. S.G. 70, cat £2,800+. Photo. £1,500-£1,800
- 42 ☒ - 6d. dull and bright purple, fine used on 1907 (May 2) registered envelope to Germany, scarce. S.G. 70. Photo. £250-£300
- 43 ★ - 4s. black and carmine, the rare variety watermark reversed, fine mint, only a few examples recorded. S.G. 73x, cat £1,700. Photo. £700-£800
- 44 ○ - 4s. black and carmine, the rare variety watermark reversed, fine used, only a few examples recorded. S.G. 73x, cat £1,800. Photo. £800-£900

## King George V Issues

- 45 ○ 1912-24 Watermark Multiple Crown CA ½d. blue-green, with variety watermark inverted, fine used, scarce. S.G. 76w, cat £1,000. Photo. £300-£350
- 46 ★ - 1s. black on green, on ordinary paper, fine mint. S.G. 81a, cat £550. Photo. £180-£200
- 47 ☒ 1918 (April) “WAR TAX” ½d. green, variety overprint double, fine unmounted mint. Photocopy of B.P.A. certificate when in pair. S.G. 86a, cat £850+. Photo. £500-£600
- 48 ★ - ½d. green, variety overprint double, fine lightly mounted mint. S.G. 86a. Photo. £450-£500
- 49 ☒ - ½d. green, with variety watermark inverted, fresh unmounted mint with interval margin at right, very minor gum bend, otherwise fine. S.G. 86w, cat £500+. Photo. £250-£300





53



54



51



57



Ex 61



50



56



58



Ex 60



52

## Gibraltar: King George V Issues continued

- 50 ☼ 1918 (April) "WAR TAX" ½d. green, with variety watermark inverted and reversed, fine unmounted mint from the top of the sheet. *One of just six known.* S.G. 86y, cat £475. Photo. £200-£250
- 51 ○ 1921-27 Watermark Multiple Script CA 1½d. chestnut, with variety watermark inverted, fine used. S.G. 91w, cat £850. Photo. £250-£300
- 52 ☼ 田 - 2½d. bright blue in a fine unmounted mint block of four from the foot of sheet, one showing large "2" in "½". S.G. 94, a, cat £560+. Photo. £180-£200
- 53 ★ 1925-32 Watermark Multiple Script CA £5 violet and black, fresh mint, faintly toned gum, light corner bend, otherwise fine. S.G. 108, cat £1,300. Photo. £400-£500
- 54 ○ - £5 violet and black, used with doubtful registered cancellation. S.G. 108. Photo. £600-£800



- 55 ☼ 1925-32 Watermark Multiple Script CA £5 violet and black, used on 1926 (May 15) registered envelope to Germany, some staining and toning, otherwise fine and rare. S.G. 108, cat £4,750 as used. Photo. £2,000-£2,500
- 56 ★ 1931-33 "Rock" Issue, 2d. grey perf 14, very rare vertical pair with interpanneau margin, fine. *The sheets of 120 normally had a central perforation through the margin to allow the sheets to be split into panes of sixty. The reason for the lack of the central perforation remains unexplained.* Ex Kayfetz. S.G. 112 var. Photo. £600-£800
- 57 ★ 1931-33 "Rock" Issue, 3d. blue perf 14, very rare, possibly unique block of six with interpanneau margin showing imprint and burelage central design, fine, all but one are unmounted. *As with the preceding lot, the sheets of 120 normally had a central perforation through the margin to allow the sheets to be split into panes of sixty. The reason for the lack of the central perforation remains unexplained.* S.G. 113 var. Photo. £2,000-£2,500
- 58 ☼ → 1933 (Aug.) 4th. South American Flight, registered envelope to Brazil, bearing two different zeppelin cachets in red, fine. Photo. £120-£150

## 1935 Silver Jubilee Issue

- 59 ★ A mint selection of varieties on leaves, incl. 2d. , 6d. and 1s. corner blocks of four (6d. has no margins) showing "extra flagstaff" [Pl. "1", R. 9/1], 2d. corner block of four and 3d. vertical corner pair, both with "short extra flagstaff" [Pl. "2", R. 2/1], 2d. with "flagstaff on right-hand turret" [Pl. "5", R. 7/1], etc., mainly fine. (58). £250-£300
- 60 ○ A used collection of mainly varieties on leaves, incl. 2d. to 1s. set in corner blocks of four, each showing "extra flagstaff" [Pl. "1", R. 9/1] all with first day cancellations, 2d. and 1s. both with variety "lightning conductor" [Pl. "3", R. 2/5"], 2d. with "flagstaff on right-hand turret" [Pl. "5", R. 7/1], 3d. with "short extra flagstaff" [Pl. "2", R2/1], etc., fair to fine. (30). Photo. £450-£500
- 61 S 2d. to 1s. set all perforated "SPECIMEN", the 2d. with variety "lightning conductor" [Pl. "3", R. 2/5"] (*only seven such can exist*), fine with gum. (R.P.S. certificate 1992). S.G. 114-117, cat £200+. Photo. £120-£150





Ex 62



64



66



69



67



## Gibraltar: 1935 Silver Jubilee continued



63



65



68

- 62 ★ 2d. to 1s. set all with variety “lightning conductor” [Pl. “3”, R. 2/5] (3d. in a block of four), fine mint. S.G. 114c-117c, cat £935. Photo. £240-£260
- 63 ★ 3d. brown and deep blue, variety “extra flagstaff” [Pl. “1”, R. 9/1], fine mint. S.G. 115a, cat £325. Photo. £100-£120
- 64 ☼ 6d. green and indigo unmounted mint corner block of four, lower-left stamp showing “short extra flagstaff” [Pl. “2”, R. 2/1]. S.G. 116b, cat £478. Photo. £120-£150
- 65 ○ 6d. green and indigo showing “short extra flagstaff” [Pl. “2”, R. 2/1]. S.G. 116b, cat £450. Photo. £150-£180
- 66 ○ 6d. green and indigo used block of four, the lower-left stamp with “lightning conductor” [Pl. “3”, R. 2/5]. fine. S.G. 116c, cat £328. Photo. £100-£120
- 67 ☼ 1s. slate and purple, unmounted mint corner block of four (mounted in margins), the lower-left stamp showing “short extra flagstaff” [Pl. “2”, R. 2/1], fine. S.G. 117b, cat £456. Photo. £120-£150
- 68 ○ 1s. slate and purple “short extra flagstaff” [Pl. “2”, R. 2/1], used, fine. S.G. 117b, cat £425. Photo. £120-£140
- 69 ★ 1s. slate and purple, mint corner block of six, one showing “hairlines to left of round tower” [Pl. “2”, R. 8/6], fine. S.G. 117 var. Photo. £100-£120

## King George VI Issues



70



71



72 (reverse)

- 70 ☼ 1938-51 2d. grey perf 14 unmounted mint horizontal pair from the upper right corner of the sheet, the left-hand stamp showing variety “ape on rock” [R. 1/5], toned gum, otherwise fine. S.G. 124aa, cat £354+. Photo. £100-£120
- 71 ★ - 2d. grey, perf 13½, watermark sideways, mint horizontal coil join pair, scarce. S.G. 124ab, var, cat. £1,400+. Photo £450-£500
- 72 ★ - 2d. grey, perf 13, watermark sideways, showing variety “A” of “CA” missing from watermark, fine mint, very scarce. S.G. 124ba, cat. £1,200. Photo. £400-£500

**Gibraltar: King George VI Issues continued**



73



74

- 73 ☒ → World War II undated stampless envelope to Scotland, endorsed "AIR MAIL", bearing double circle "POSTAGE PAID/4d." in violet, backstamped straight line "CENSORED", unusual. Photo. £150-£200

- 74 ☒ 1944 (July 31) envelope to England, bearing 1938-51 6d. tied by "FIELD POST OFFICE/475" c.d.s., and "Honour" label tied by violet shield "PASSED BY/CENSOR/4608", slight staining, otherwise fine. Photo. £100-£120



75



76

- 75 ★ 1950 New Constitution 6d. carmine and grey-violet, showing variety overprint double, fine mint. R.P.S. certificate (1981). S.G. 142a, cat. £950. Photo. £300-350

- 76 ○ - 6d. carmine and grey-violet, showing variety overprint double, fine used. R.P.S. certificate (1981). S.G. 142a, cat. £1,100. Photo. £350-£400

**Queen Elizabeth II Issues**



77



78



79

- 77 ⚙ 1953-59 2½d. carmine with variety watermark inverted, fine unmounted mint. S.G. 149aw, cat. £375. Photo. £120-£150

- 78 ⚙ 1966 Sea Angling Championships 7d. showing the scarce variety black (value and inscription) omitted, fine unmounted mint from right of sheet. S.G. 191a, cat. £1,200. Photo. £700-£800

- 79 ○ - 7d. showing the scarce variety black (value and inscription) omitted, used, small thin, otherwise fine. S.G. 191a, cat. £1,200. Photo. £450-£500



## Gibraltar: Queen Elizabeth II Issues continued



80



81



82



84

- 80 ★ 1967-69 H.M.S. Victory ½d., with the very scarce variety grey (sails, etc.) omitted, fine mint from the left of the sheet. S.G. 200a, cat. £500. Photo. £200-£250
- 81 ☼ 1968 Christmas 4d. variety gold (star) omitted, fine unmounted mint, scarce. S.G. 231a, cat £275. Photo. £250-£300
- 82 ○ - 4d. variety gold (star) omitted, fine used. S.G. 231a, unpriced. Photo. £250-£300



- 83 ☼ 1973 Discovery of Gibraltar Skull set in presentation pack, the 4p. showing the rare variety gold (GIBRALTAR) omitted, around five examples recorded. S.G. 310-312, Pierron cat GR620Mca. Photo also on back cover.

*This variety results in the loss of the country name, examples having been reported discovered in presentation packs. The design centring on all examples is low, but some are lower than others suggesting more than one row or column of a sheet was affected by the error.*

£3,000-£4,000

- 84 ○ 1980 Nelson unissued 3p. showing the portrait of Nelson facing left, used, a few very minor surface imperfections and short perfs at foot, otherwise fine and extremely rare. S.G. 442 var. Photo. £700-£900

### Collections

- 85 ★ A K.E.VII to K.G.VI mint collection on leaves, incl. 1903 CA 2½d. with large “2” in “½”, 1906-12 set with additional 2½d. showing large “2” in “½”, 1912-24 MCA ½d. to £1 set with additional 2½d. showing large “2” in “½”, 1921-27 ½d. to 8s. set, 1925-32 Script 1s. to £1 (3), 1938-51 to £1, etc., varied condition. (154). £600-£700
- 86 ○ A used collection on leaves, incl. 1898 2½d. pair with watermark inverted, 1903 CA ½d. to £1 (£1 has fake cancellation), 1906-12 MCA 1/2d. to 8s. set with additional 2½d. showing large “2” in “½”, 1912-24 MCA ½d. to £1, extra 2½d. (2) with large “2” in “½”, 1925-32 Script £1, 1921-27 Script ½d. to 8s. set, 1938-51 to £1 (2), etc., varied condition. (149). £1,000-£1,200
- 87 A mint and used Q.E.II collection on leaves, incl. 1953-59 set mint and used, varieties, Postage Dues, etc., mainly fine. (few 100's). £150-£200

# The Malaya Study Group

THE MALAYA STUDY GROUP was formed by Howard Selzer in the United States in 1959 to study the stamps and postal history of the geographical area now covered by West Malaysia and Singapore. Since that time, the group has gone from strength to strength, and now has hundreds of members worldwide.

The group is based in the United Kingdom and is administered by an annually elected committee.

Several meetings are held throughout the year at various locations, with the majority being in London. Specialist displays are given by individual members, or as a group where all are invited to contribute.

Room/postal and postal only auctions are held two or three times a year, which normally include high-class specialist items, participation in buying or selling being restricted to group members only. Auction catalogues are distributed with other mailings. The society also operates a Packet Circuit for UK members, an excellent way to fill those awkward gaps.

The highly respected society journal, *The Malayan Philatelist*, is distributed three times a year to all members, by airmail where appropriate at no extra cost, containing a wealth of information and in depth articles on all aspects of Malayan/Malaysian philately, all members being encouraged to contribute. A comprehensive cross referenced index has recently been produced in A4 bound format which is free to all members upon joining.

In addition to *The Malayan Philatelist*, a newsletter is also distributed with the same frequency. The newsletter includes descriptions of displays given by members, both to the Malaya Study Group and other societies, members' activities, and information of a general nature of interest to the group.

Several specialist books have been produced by the society, which are available for purchase subject to availability.

Not all members are specialists, and few collect everything. Interest spans such diverse topics as Censor Mails, Postage Dues, British Military Occupation, Malaysian Definitives, Postal History, Postal Stationary, Japanese Occupation, a specific State or reign etc.

Full membership is £10 per annum, which is excellent value for money!

For further information please contact:

David Tett  
Membership Secretary  
16 Broadway  
Gustard Wood  
Wheathampstead  
Herts  
AL4 8LN

email: [davidtett@aol.com](mailto:davidtett@aol.com) or check out the website [www.m-s-g.org.uk](http://www.m-s-g.org.uk) where full details of the Group and overseas representatives will be found.



## The Edward Young Collection of Malaya and States

- 88 ☒ A selection of covers and cards, incl. Johore 1896 (May 26) registered cover franked by 1896 Coronation 1c. to 6c., Perak unused postcard headed "On Government Service", W.W.II stampless envelope from Australia to a civilian internee at Changi Camp with censor label, etc., fair to fine. (13 items) **£100-£150**
- 89 A mainly K.G.VI collection on leaves, incl. Johore, Kedah 1912 1c. to \$5 without 10c. or \$1 overprinted "SPECIMEN", Kelantan 1951-55 to \$5 (both) mint, Malacca 1949-52 sets (2) mint and used, Negri Sembilan 1935-40 set mint also 1935-36 values only (14) perforated "SPECIMEN", Pahang 1935-41 sets (2) mint and used, Penang 1949-52 set mint, Perak 1935-37 set mint, 1938-41 set used, Perlis 1951-55 set used, Selangor 1935 Government Survey Department 50c. Mosque essay in red mounted in sunken card, 1935-41 set mint, also 2c. orange showing joined script mint, Trengganu 1949-55 sets (2) mint and used, etc., mainly fair to fine. (100's). **£800-£1,000**
- 90 A Q.E.II collection on leaves, incl. varieties with Kelantan 1971-78 15c. variety black omitted single, also the same variety in two imperforate vertical pairs, Malacca, Penang 1965-68 15c. mint horizontal pair from right of sheet showing variety imperforate between stamp and margin, Trengganu 1965 20c. mint horizontal strip right stamp with bright purple omitted, etc., varied condition. (100's). **£300-£400**
- 91 **Revenues:** A selection, incl. Straits Settlements, Perak, etc. with some duplication, fiscally used postage stamps, etc., mixed condition. (few 100's). **£150-£200**

### Straits Settlements

#### 1867 Surcharges on Stamps of India



Ex 92



Ex 93

- 92 ☆ 1½c. on ½a. to 32c. on 2a. set of nine unused, the 8c. with rounded corner, otherwise good to fine appearance and much above average for this difficult group. S.G. 1-9, cat. £3,050. Photo. **£400-£600**
- 93 ○ 1½c. on ½a. to 32c. on 2a. set of nine used, all without disfiguring firms' chops, an attractive set much above average condition for these. S.G. 1-9, cat £1,377. Photo. **£400-£500**

#### 1867-72 Issue



Ex 94



Ex 95



Ex 96

- 94 ☆ 2c. to 96c. with additional shades of the 1c., (3, one with watermark inverted, straight edge at right), a few faults but an attractive group and mostly fair to fine. S.G. 11-19. Photo. **£350-£400**
- 95 ○ 2c. to 96c. with extra 2c. (2), 4c., 6c., 8c., 12c., 24c. and 96c. perf 12½, used, well above average for these. S.G. 11-19a. Photo. **£100-£120**
- 96 ○ 2c., 6c., 8c., 24c. and 32c. all with inverted watermarks, used, fair to fine. 11w, 13w, 14w, 16w (unpriced), 18w. Photo. **£250-£300**

## Straits Settlements: 1867-72 Issue continued

97 C P 6c., 8c., 12c. and 24c. imperforate plate proofs in issued colours all overprinted "CANCELLED" on ungummed unwatermarked paper, fine. Photo. £200-£250

98 ☆ 96c. grey perf 12½, unused, small part original gum, small tears at top and foot, rare. S.G. 19a, cat £2,250. Photo. £250-£300



## 1879 (May) Surcharges

99 ☆ 5c. on 8c. orange (2, one showing no stop after "Cents", with blunt perfs) unused, also 7c. on 32c. pale red mint. S.G. 20, 20a, 21, cat. £1,080. Photo. £150-£200

100 ☆ 5c. on 8c. orange-yellow, showing variety "Fi" spaced, fine unused with part dull gum, a rare variety. S.G. 20b, cat £900. Photo. £200-£250

101 ☆ 7c. on 32c. pale red, variety no stop after "Cents", unused, some soiling, light crease but reasonable appearance. S.G. 21a, cat £1,300. Photo. £250-£300

102 ○ 1880-1883 a used selection, incl. 1880-81 10c. on 6c. lilac (partly double), 10c. on 30c. claret, 1882 (Jan.) 5c. on 4c., 1882 (Jan.) 5c. purple-brown, 1883 (April) 2c. on 8c. orange types "20a", "20b", "20c", "20d" and "20f", 1883 (June-July) 2c. on 12c. blue, etc., mixed condition. (19). £400-£500

## 1880 (Mar.) "10/cents" on 30c. claret



103 ☆ 10c. on 30c. claret types "a", with straight edge at left and "b", both unused with some gum. S.G. 22, 23, cat £825. Photo. £120-£150

104 ○ 10c. on 30c. claret type "a", "b" (small tear and rounded corner, "c" and "d", used, fair to good. S.G. 22-25. Photo. £180-£200



105 ☆ 10c. on 30c. claret type "d", fine unused, some gum, rare. S.G. 25, cat £3,000. Photo. £800-£900

106 ○ 10c. on 30c. claret type "e", good used. S.G. 26, cat £1,700. Photo. £450-£500

107 ○ 10c. on 30c. claret type "g", fine used. S.G. 28, cat £500. Photo. £150-£180

108 ☆ 10c. on 30c. claret, the rare type "j", unused, has been partially re-perforated and corner perf added at lower left. B.P.A. certificate (2006). S.G. 31, cat £12,000. Photo. £2,000-£2,500



### 1880 (Apr.) "10" on 30c. claret



109



Ex 110



Ex 111



112



113

- 109 ★ 10 on 30c. claret type "a" [31] showing cleft foot to "1", fine mint. Ex Taylor. S.G. 33 var. Photo. £100-£120
- 110 ○ 10 on 30c. claret types "a", "b", "c" and "g", used, fair to fine. S.G. 33-36, cat £535. Photo. £120-£150
- 111 ★ 10 on 30c. claret type "b" fine mint. S.G. 34, cat £200. Photo. £100-£120
- 112 ☆ 10 on 30c. claret type "c", fine unused. S.G. 35, cat £650. Photo. £150-£200
- 113 ☆ 10 on 30c. claret type "g", fine unused. S.G. 36, cat £1,600. Photo. £350-£400



114



115



116



117



118

- 114 ☆ 10 on 30c. claret type "i", fine unused, rare. B.P.A. certificate (1996). S.G. 37, cat £4,500. Photo. £800-£900
- 115 ○ 10 on 30c. claret type "i", good used, scarce. S.G. 37, cat £850. Photo. £200-£220
- 116 ☆ 10 on 30c. claret type "k", unused, fine and rare. S.G. 38, cat £4,500. Photo. £800-£900
- 117 ○ 10 on 30c. claret type "k", lightly cancelled, one short perf at foot, otherwise fine, scarce. S.G. 38, cat £850. Photo. £300-£350
- 118 ○ 10 on 30c. claret type "l", fine used, scarce. S.G. 39, cat £850. Photo. £300-£350

### 1880 (Aug.) "5/cents" on 8c. orange



Ex 119



Ex 120



121

- 119 ☆ 5c. on 8c. orange, the three types, unused, good to fine. S.G. 41-43, cat £770. Photo. £150-£180
- 120 ○ 5c. on 8c. orange, the three types used, type "13" perfined, type "14" small tear at top, type "15" fine but last two have pen cancellations as well. S.G. 41-43, cat £930. Photo. £200-£250
- 121 ★ 田 5c. on 8c. orange, mint block of four, top horizontal pair type "14", lower pair type "15", fine and rare. S.G. 42, 43, cat £1,320. Photo. £500-£600
- 122 ☆ 1880-1883 an unused selection, incl. 1880-81 "10c." on 12c. (2), 1882 2c. brown, 1883 (April) 2c. on 8c. orange type "20a" (thinned), 1883 (June-July) 2c. on 12c. blue, etc., chiefly fair to fine. (10). £300-£350

## Straits Settlements: 1880–81 Surcharges



123



124



125

- 123 ☆ 10c. on 6c. lilac variety overprint double, unused, minor imperfections, otherwise fine and rare. S.G. 44a, unpriced. Photo. £400-£500
- 124 ○ 10c. on 6c. lilac, showing partly double surcharge, fine used. S.G. 44 var. Photo. £100-£120
- 125 ★ 10c. on 30c. claret, mint, small corner fault, otherwise fine. S.G. 46, cat £400. Photo. £120-£140

## Issues from 1882



126



127



128

- 126 ★ 1882 (Jan.) 5c. on 4c. rose, fine and fresh mint. S.G. 47, cat £275. Photo. £100-£120
- 127 ☆ 1882 (Jan.) Watermark Crown CC 10c. slate, unused, part original gum, one pulled perf., otherwise fine. S.G. 49, cat £425. Photo. £100-£120
- 128 ○ 1882 Watermark Crown CA 8c. orange, with watermark inverted, used, small corner fault, otherwise fine and attractive. S.G. 52w, unpriced. Photo. £100-£120



129



130

- 129 ☆ 1883 (Apr.) 2c. on 8c. orange, types "20a", "20b", "20c" and "20d", unused, fair to fine. S.G. 54-57, cat £890. Photo. £150-£200
- 130 ○ - 2c. on 8c. orange, type "20d" variety surcharge double, used, some slight staining, otherwise fine. Brandon certificate (2005). S.G. 57a, cat £1,100. Photo. £400-£500



131



132



133

- 131 ○ 1883 (Apr.) 2c. on 32c. pale red, type 20a, showing variety surcharge double, fine used, very rare. Brandon certificate (2004). S.G. 59 var, unlisted and unpriced. Photo. £1,000-£1,200
- 132 ★ - 2c. on 32c. pale red, type 20f, a mint wing margined example, a few blunted perfs, otherwise fine and scarce. S.G. 60, cat £1,000. Photo. £250-£300
- 133 ○ 1883 (June-July) 2c. on 4c. rose with variety "s" in "Cents" inverted, fine used with cancellation and horizontal pen stroke, rare. B.P.A. certificate (1949). S.G. 61a, cat £1,500. Photo. £600-£700



**Straits Settlements** continued



135



136



137



Ex 138

- 134 1883-91 2c. to 96c. mint with extra 2c., 4c. (2), 6c. and 24c., also 2c. to 96c used with extra 2c., 4c., 6c. and 24c., mainly fair to fine. (27). S.G. 63-71. £80-£100
- 135 ☆ 1884 (Feb-Aug.) 4c. on 5c. blue, surcharged in black, unused, large part original gum, fine and rare. S.G. 72, cat £3,250. Photo. £1,600-£1,800
- 136 ☆ - 4c. on 5c. blue surcharged in red, 8c. on 12c. purple-brown, former with wrinkled gum, other with gum, fine. S.G. 73, 75, cat £555. Photo. £100-£120
- 137 ○ - 4c. on 5c. blue surcharged in red, 8c. on 12c. blue (straight edge at right), also 1884 (Aug.) 2c. on 5c. blue the three types, all used, fair to good. S.G. 73, 74, 76-78, cat £700. Photo. £150-£200
- 138 ☆ 1884 (Aug.) 2c. on 5c. blue, the three types, unused, fine. S.G. 76-78, cat £420. Photo. £100-£120

**1884 (Sept.) "8" Surcharges**



140



141



142

- 139 ○ 8 on 8c. on 12c. dull purple, used, a few imperfections, otherwise fine. S.G. 80, cat. £350. Photo. £70-£90
- 140 ★ 8 on 8c. on 12c. dull purple, mint, showing broken figure "8", usual brownish gum, otherwise fine. S.G. 80 var, cat £325+. Photo. £120-£150
- 141 ☆ 8 on 8c. on 12c. dull purple, variety surcharge type 23 in blue, unused but fine deep colour, an attractive example of this rarity. B.P.A. certificate (1985). S.G. 80b, cat £9,000. Photo also on back cover. £3,000-£4,000
- 142 ○ 8 on 8c. on 12c. dull purple, showing variety "s" of "Cents" low, unusually used with red Singapore Paid cancellation, rounded corner perf and creased, otherwise fine and rare. S.G. 80c, cat £3,000. Photo. £700-£800

**Straits Settlements** continued



- 143 ○ 1884 4 on 4c. on 5c. blue trial surcharge in red, used. All seven known examples of this rarity were used on the personal correspondence from Edwin Empson Isemonger (1836-1903), Postmaster General of the Straits Settlements, to the United Kingdom. Ex Govett. B.P.A. certificate (1960). Cat. £28,000. Photo also on back cover. £10,000-£12,000

**Issues from 1885**



145



146

- 144 ○ 1885-94, a used selection, incl. 1886 (Apr.) 3c. on 5c. purple-brown, 1887 (July) 2c. on 5c. blue, 1892 1c. on 4c. brown showing slight doubling of the surcharge, etc., chiefly good to fine. (15). £150-£200
- 145 ○ 1887 (July) 2c. on 5c. blue, with variety "C" of "Cents" omitted, used, faintly toned on reverse, otherwise fine and scarce. B.P.A. certificate (1993). Ex Tompkins. S.G. 85a, cat £3,500. Photo. £2,000-£2,200
- 146 ☆ 1892 1c. on 4c. brown, with variety surcharge double, unused, small part original gum. fine. S.G. 89a, cat £1,600. Photo. £350-£400



147



148

- 147 ★ 1892 1c. on 6c. lilac, mint horizontal pair, with variety surcharge double, one inverted, usual brownish gum, fine. S.G. 90a, cat £3,600. Photo. £1,200-£1,500
- 148 ○ - 1c. on 6c. lilac, with variety surcharge double, one inverted, fine used. B.P.A. certificate (2001). S.G. 90a, cat £1,700. Photo. £700-£800



149



150

- 149 ★ - 1c. on 8c. orange, showing variety "L" for "E" in "CENT"; mint, slightly brown gum, otherwise of fine appearance, fine. R.P.S. certificate (1998). S.G. 91 var, unpriced. Photo. £120-£150
- 150 ★ 1892-94 3c. on 32c. carmine-rose, variety surcharge omitted, mint and fine. S.G. 94a, cat £4,000. Photo. £1,500-£1,800

## 1892–99 Key Plate Issue



151



Ex 152

- 151 ♂ 1c. green, a fine unmounted mint horizontal strip of three, centre stamp showing malformed “S”. S.G. 95, a, cat £425+. Photo. £200-£250
- 152 ○ 1c. green (2) one with malformed “S”, other with repaired “S”; 3c. carmine-rose with malformed “S”, 3c. brown with repaired “S” and 25c. (faded) showing repaired “S”. used, fair to good. S.G. 95a, b, 96a, 97a, 103b, cat £985. Photo. £200-£250



153



154



155

- 153 ★ 3c. carmine-rose, showing malformed “S”, mint, slight gum crease, otherwise fine. S.G. 96a, cat £550. Photo. £150-£180
- 154 ★ 25c. purple-brown and green, showing repaired “S”, mint, gum slightly toned, otherwise fine. S.G. 103b, cat £850. Photo. £200-£220
- 155 ★ \$5 orange and carmine, showing repaired “S”, mint, a few minor tone spots, otherwise fine and fresh appearance, rare. S.G. 105a, cat £3,500. Photo. £1,000-£1,200

## King Edward VII Key Plate “POSTAGE & REVENUE” Imperforate Colour Trials



156



157



158



159

- 156 P 1c, white numerals, imperforate colour trial in dull purple on Crown CA watermarked paper, close to issued 5c., small corner crease, otherwise fine with gum. Photo. £250-£300
- 157 P 1c., white numerals, imperforate colour trial in dull purple and carmine on Crown CA watermarked paper, small corner crease, otherwise fine with gum. Photo. £250-£300
- 158 P 1c, white numerals, imperforate colour trial in dull purple and brown on Crown CA watermarked paper, fine with gum. Photo. £250-£300
- 159 P \$5, solid numerals, imperforate colour trial in dull purple and black on yellow on Crown CA watermarked paper, similar colour to 10c., small corner crease, otherwise fine with gum. Photo. £250-£300



## Straits Settlements: 1902–03 Watermark Crown CA



Ex 160



Ex 161



162



163



164



165

- 160 ★ 1c. to \$5 set with additional 1c. and 50c., mainly good to fine mint. S.G. 110-121, cat £350+. Photo. £100-£120
- 161 ○ 1c. to \$5 set with additional 1c. and 50c., mainly fair to fine used. S.G. 110-121, cat £325+. Photo. £80-£100
- 162 3c. dull purple and orange, variety watermark inverted, fine used. S.G. 111w, cat £275. Photo. £100-£120
- 163 S \$100 purple and green on yellow, overprinted "SPECIMEN", fine with gum. S.G. 122s, cat £550. Photo. £180-£200
- 164 S \$100 purple and green on yellow, overprinted "SPECIMEN", fine with gum. S.G. 122s. Photo. £180-£200
- 165 ▲ \$100 purple and green on yellow, five examples on piece with red fiscal embossed cancellation, most unusual. S.G. 122, cat £1,125+. £300-£400

## 1904–10 Watermark Multiple Crown CA



Ex 166



Ex 167



168

- 166 ★ 1c. to \$5 set with additional 3c., mainly good to fine mint. S.G. 127-138, cat £500. Photo. £150-£180
- 167 ★ 1c. to \$5 set on chalk surfaced paper, mainly fine mint. (11). S.G. 127a-138a, cat £482. Photo. £100-£120
- 168 ★ \$25 grey-green and black, fine mint. S.G. 139, cat £1,900. Photo. £600-£700



- 169 ★ 1904-10 MCA \$100 purple and green on yellow, mint, small corner bend, otherwise fine colour and of fresh appearance, rare. Friedl certificate (1980). S.G. 140, cat £14,000. Photo also on front cover. £8,000-£9,000

## 1906–07 Overprinted on Stamps of Labuan



Ex 170



Ex 171



172



173

- 170 ★ 1c. to \$1 with additional 25c. perf 14½-15, mint, mainly good to fine. S.G. 141-151, cat £450. Photo. £120-£140
- 171 ○ 1c. to \$1 set, chiefly good to fine used. S.G. 141-151, cat £750. Photo. £200-£250
- 172 ☆ 1c. perf 14, a few toned perf tips at top, otherwise fine and fresh unmounted mint. S.G. 141a, cat £350+. Photo. £200-£250
- 173 ○ 1c. perf 14, used, some staining, otherwise fine. S.G. 141a, cat £475. Photo. £120-£150



174



Ex 175



176



177

- 174 ○ 2c. used, a few blunted perfs, otherwise fine. S.G. 142, cat £450. Photo. £120-£150
- 175 2c. perf 14½-15 mint, 25c. perf 14½-15 used, also \$1 mint showing “:” after “Straits”, good to fine. S.G. 142a, 149a, 151 var. Photo. £150-£180
- 176 ☆ 3c. with variety line through “B”, unused with part original gum. S.G. 143a, cat £375. Photo. £100-£120
- 177 ★ 4c. on 12c. with variety no stop after “CENTS” good mint. S.G. 144a, cat £475. Photo. £120-£150



Ex 178



179



180



181

- 178 ★ 4c. on 12c., 4c. on 18c. (2) and 10c. all with line through “B”, mint, some perf faults, otherwise fine. S.G. 144b, 146d, 148b, cat £875. Photo. £200-£250
- 179 ★ 4c. on 16c. with variety “STRAITS SETTLEMENTS” in both brown-red and black, fine mint. S.G. 145a, cat £650. Photo. £250-£300
- 180 ★ 4c. on 18c. with variety no stop after “CENTS”, fine and fresh mint. S.G. 146a, cat £350. Photo. £120-£140
- 181 ☆ 4c. on 18c. from top of sheet, showing variety imperforate between stamp and margin, unused, part original gum, rare as only five examples recorded. S.G. 146 var. Photo. £400-£500

**Straits Settlements: 1906–07 Overprinted on Stamps of Labuan** continued



182



183



184

- 182 ☆ 10c. with variety no stop after “Settlements”, unused, large part original gum. S.G. 148a, cat £425. Photo. £100-£120
- 183 ☆ 25c. showing variety line through “B”, unused, traces original gum. S.G. 149c, cat £400. Photo. £120-£140
- 184 ☆ \$1 showing variety line through “B”, unused, traces of original gum. S.G. 151b, cat £700. Photo. £180-£200

**1906–12 Watermark Multiple Crown CA**



Ex 185



186

- 185 ★ 1c. to \$5 set with additional 4c. and 10c., mainly fine mint. S.G. 152-167, cat £304. Photo. £100-£120
- 186 ★ \$5 green and red on green, variety watermark inverted, fine and fresh mint, very rare. S.G. 167w, cat £1,000. Photo. £500-£600



187



188

- 187 S \$25 purple and blue on blue, overprinted “SPECIMEN”, fine and fresh with gum. S.G. 168s, cat £450. Photo. £150-£180
- 188 ★ \$25 purple and blue on blue, fine mint. S.G. 168, cat £1,800. Photo. £800-£900



189



190

- 189 S \$500 purple and orange, overprinted “SPECIMEN”, trace of soiling, otherwise fine with gum. S.G.169s, cat £2,250. Photo. £800-£900
- 190 \$500 purple and orange, believed to be a most interesting forgery of this great rarity, unused, vertical crease and slight discolouration, but an amazing item. S.G. 169. R.P.S. certificate (1972) stating “genuine”. Photo. £500-£700



## 1912–23 Watermark Multiple Crown CA



Ex 191



194



195



196



197

- 191 S 1c. to \$5 set overprinted "SPECIMEN", also additional 10c (with broken "M" in "SPECIMEN") and \$2 (part gum), mainly fine with gum. (23). S.G. 193s-212s, cat £800+. Photo. £300-£400
- 192 ★ 1c. to \$5 (5) set with most listed shades, mainly fine mint. (40). S.G. 193-212d. £300-£400
- 193 ○ 1c. to \$5 (5) and \$25 with most listed shades, mainly fair to fine used with a few doubtful cancellations. (45). S.G. 193-213. £100-£120
- 194 ○ 1c. black, with variety watermark inverted, fine used and rare. S.G. 194w, cat £300. Photo. £180-£200
- 195 ★ 2c. green with variety watermark inverted, mint a few imperfections, otherwise fine. S.G. 195 var, unlisted and unpriced. Photo. £200-£250
- 196 ○ 4c. dull purple, with variety watermark sideways, fine used, rare. S.G. 197a, cat £1,800. Photo. £700-£800
- 197 ★ 6c. deep claret with variety watermark inverted, mint, minor tone spot on gum, otherwise fine. S.G. 200aw, cat £275. Photo. £90-£100



198



199

- 198 S \$25 purple and blue on blue overprinted "SPECIMEN", fine with gum. S.G. 213s, cat £375. Photo. £200-£250
- 199 ★ \$25 purple and blue on blue, mint, a few small tone spots on gum, otherwise fine. S.G. 213, cat £1,600. Photo. £500-£600



200



201

- 200 S \$100 black and carmine on blue, overprinted "SPECIMEN" in red, a few small tone spots, otherwise fine with gum. S.G. 214s, cat £800. Photo. £180-£200
- 201 ☆ \$100 black and carmine on blue, unused, small part original gum, otherwise fine and rare. B.P.A. certificate (1996). S.G. 214, cat £7,000. Photo. £2,000-£2,500

**Straits Settlements: 1912–23 Watermark Multiple Crown CA continued**



202



203

- 202 s \$500 purple and orange-brown, overprinted “SPECIMEN”, fine with gum, rare. S.G. 215s, cat £2,500. Photo. £800-£900
- 203 o \$500 purple and orange-brown, used with red embossed fiscal cancellation, fine. S.G. 215, cat £500. Photo. £200-£250

**1917 Red Cross Surcharges**

- 204 ★ 田 3c. + 2c. scarlet mint block of four from top of sheet, one showing variety no stop (unmounted), also another shows broken “2”, fine. S.G. 216, a, var, cat £400+. Photo. £200-£250
- 205 o 3c. + 2c. scarlet showing variety no stop, good used. S.G. 216a, cat £800. Photo. £250-£300
- 206 ★ 4c. + 2c. dull purple mint horizontal pair, one showing variety no stop, minor adherences to gum, otherwise fine. S.G. 217, a, cat £450. Photo. £150-£180



204



205



206



Ex 207



208

**1921–33 Watermark Multiple Script CA**

- 207 ★ 1c. to \$5 set with extra shades and dies, mainly fine mint, also \$25 purple and blue on blue overprinted “SPECIMEN” fine with gum. (32). S.G. 218-240a, cat £458. Photo. £100-£120
- 208 ★ \$25 purple and blue on blue, fine mint. S.G. 240b, cat £800. Photo. £350-£400

**Straits Settlements: 1921–33 Watermark Multiple Script CA continued**



209



210

- 209 ○ \$25 purple and blue on blue, showing broken Crown and scroll, used, heavily cancelled, otherwise fine and rare. S.G. 240bb, unpriced. Photo. £300-£400
- 210 S \$100 black and carmine on blue, overprinted "SPECIMEN", fine with gum. S.G. 240cs, cat £600. Photo. £200-£220



- 211 ★ \$100 black and carmine on blue, fine and fresh mint, rare. Brandon certificate (1986). S.G. 240c, cat £6,000. Photo also on back cover. £3,000-£3,500



(detail)

- 212 ○ \$500 purple and orange-brown fiscally used on 1924 document with \$100 (2), \$25 (2), \$5 (3), \$2, \$1 and 50c. all tied by red embossed cancellations, slightly soiled, otherwise a most impressive item. Photo. £1,400-£1,600



**Straits Settlements: 1921–33 Watermark Multiple Script CA continued**



213



214



215

- 213 ○ \$500 purple and orange-brown, fiscally used with red embossed cancellation, fine. S.G. 240d, cat £500. Photo. £200-£250
- 214 s Unissued 8c. carmine overprinted “SPECIMEN” fine with gum. Cat £450. Photo. £150-£200
- 215 s Unissued 8c. carmine overprinted “SPECIMEN” another example fine with gum. Photo. £150-£200

**1922 Malaya–Borneo Exhibition Overprints**



Ex 216



Ex 217



Ex 219

- 216 ★ The balance of the mint study, incl., many varieties with Script raised stop after “EXHIBITION” set to \$1, thin first “I” MCA to \$2 (with scarce \$1), Script to \$1, mainly good to fine mint, also three used. ( ). S.G. 214-249. Photo. £400-£500
- 217 ★ Both watermarks set with additional 45c. and \$2, mainly fine mint. S.G. 241-255. Photo. £200-£250
- 218 ○ A used collection on leaves, incl. MCA \$2 used (5) and \$5 used, Script \$1 used (5), range of varieties, etc., mixed condition. (54). £500-£600
- 219 ★ Both watermarks set, all showing oval last “O” in Borneo, mainly good to fine mint. S.G. 241b-255b, cat £1,125. Photo. £300-£400



Ex 220



Ex 221



Ex 222

- 220 ★ Both watermarks set, all showing small second “A” in “MALAYA”, mainly good to fine mint, the 4c., 8c., 1c., 2c. and 4c. in pairs with normal, scarce set. S.G. 241d-255d, cat £1,132. Photo. £350-£400
- 221 ★ Both watermarks set less MCA \$1 and \$5 but with two states of the \$1, all with variety no hyphen, mainly good to fine mint. S.G. 241e-255e (less 247e and 249e). cat £932 plus unpriced \$1. Photo. £400-£500
- 222 ★ Both watermarks set less Script 1c. and 4c., all with variety no stop, mainly good to fine mint. S.G. 241f-255f (less 250f and 252f), cat £1,278. Photo. £350-£400

**Straits Settlements: 1922 Malaya-Borneo Exhibition continued**



Ex 223



224



225



226 (detail)



227

- 223 ★ Both watermarks set to \$5 green and red on blue-green, all showing variety raised stop after “EXHIBITION”, the 8c., 1c., 2c green, 4c., 5c. and 10c. in pairs with normals, good to fine mint, a scarce set. S.G. 241c-255c, cat £1,180. Photo. £400-£500
- 224 ★ **Watermark Multiple Crown CA** \$2 green and red on orange-buff with variety “EXH.BITION”, fine mint and scarce. S.G. 248h, unpriced. Photo. £200-£300
- 225 ★ - \$5 green and red on blue-green, dull part original gum, slightly toned, otherwise fine and rare. S.G. 249e, cat £1,400. Photo. £300-£400
- 226 ☒ **Watermark Multiple Script CA** 5c. orange, showing variety broken left leg to “M” setting I, occurs only once per sheet, used on correctly rated 1922 (April 19) cover, minor toning, otherwise fine and scarce. Photo. £80-£100
- 227 ⚙ - 10c. bright blue, showing variety third “I” in “EXHIBITION” omitted, fine unmounted mint, scarce. B.P.A. certificate (2004). S.G. 254g, cat £800+. Photo. £400-£500



228



Ex 232

- 228 P **1935 Silver Jubilee**, imperforate Master die proof of the frame only without indication of value, mounted on card (47 x 37mm) headed in manuscript “2955 O.K. PROOF/14523 9913”, annotated in centre “5cts, 8cts, 12cts, 25cts”, and further crossed by “Cancelled” in red, somewhat soiled but unique. Photo. £700-£800
- 229 **Collections:** A mint and used collection on leaves, incl., 1867-72 2c. brown with watermark inverted unused (faults), 32c. pale red with watermark inverted used, 1892 1c. on 12c. with watermark inverted, unused, 1904-10 MCA to \$5 (2) used, 50c. on chalk surfaced paper in a mint block of four, 1c. and 4c. mint with watermark inverted, 1906-12 MCA 1c. to \$5 used, 1912-33 \$1 used with watermark inverted, \$100 fiscally used, 1936-37 and 1937-41 sets mint, etc., mixed condition. (237 approx.). £700-£800
- 230 - A Q.V. collection on leaves, incl. 1879 (May) 5c. on 8c. orange unused, 1880 (April) “10” on 30c. claret type c used, 1883-91 4c. mint, 5c. used, 6c. unused, with watermark inverted, 1892 1c. on 4c. brown and 1c. on 6c. lilac with watermark inverted mint, 1892-99 1c. to \$5 sets (2) mint and used, etc., chiefly fair to fine. (65). £500-£600
- 231 ☆ - An unused or mint selection from 1885 to 1894, incl. 1885 3c. on 5c. blue, 1886 (April) 3c. on 5c. purple-brown, 1887 (July) 2c. on 5c. blue showing “Cents” slightly double, 1892 1c. on 4c. brown showing broken oval, etc., chiefly good to fine. (17). £200-£250
- 232 ★ **Revenues:** 1938 K.G. VI \$25 and \$100, fine mint with usual brown gum, the \$100 from [pos. 53], only six known. Photo. £100-£120

## Federated Malay States

### 1900 Overprinted "FEDERATED/MALAY STATES"



Ex 233



235



236



237

- 233 ★ **On Stamps of Negri Sembilan:** 1c. to 50c. set, mint, mainly fair to good. S.G. 1-8, cat £475. Photo. £100-£120
- 234 S - 2c. and 3c. both overprinted "SPECIMEN", both show broken "M" in "SPECIMEN", fine with gum. S.G. 2s, 3s vars. £80-£100
- 235 ★ **On Stamps of Perak:** \$5 green and ultramarine, fine mint. S.G. 13, cat £425. Photo. £120-£150
- 236 ○ - \$5 green and ultramarine, used, with Madame Joseph Sungei Patang cancellation (MJ. 237). S.G. 13. Photo. £100-£150
- 237 S - \$25 green and orange, overprinted "SPECIMEN", fine and fresh with gum. S.G. 14s, cat £400. Photo. £180-£200

### 1900-01



Ex 239



Ex 240

- 238 ★ 1c. to 50c. (3) mint, most with extra shades, mainly good to fine mint. S.G. 15-22b. (22). £250-£300
- 239 ★ \$1, \$2, \$5 (both, one has a few missing perfs) mint, some gum toning, otherwise fine. S.G. 23-25a. cat £850. Photo. £200-£250
- 240 ○ \$1, \$2, \$5 (both), used, good to fine. S.G. 23-25a, cat £895. Photo. £200-£250



241



242

- 241 S \$25 green and orange overprinted "SPECIMEN", small tone spot on gum, otherwise fine with gum. S.G. 26s, cat £300. Photo. £80-£100
- 242 ★ \$25 green and orange, mint, minor vertical gum crease, otherwise fine. S.G. 26, cat £3,000. Photo. £1,200-£1,500



## 1904–22 Watermark Multiple Crown CA



Ex 243



244



245

- 243 ★ 1c. to \$5 with most listed shades, mainly good to fine mint. (55). S.G. 27-50. Photo. £450-£500
- 244 ○ 4c. scarlet die II watermark upright, fine used. R.P.S. certificate (1998). S.G. 38b, cat £375. Photo. £120-£140
- 245 ○ 50c. grey and orange, variety watermark inverted, fine lightly used with usual Stamp Office fiscal cancellation. S.G. 47b, unpriced. Photo. £100-£150



246



247

- 246 ○ \$2 green and carmine, variety watermark inverted and reversed, with Parcel cancellations and red crayon marks, faults, nevertheless a rare item. *Believed to be the only recorded example.* S.G. 49y, unpriced. Photo. £250-£300
- 247 ★ \$25 green and orange, mint, toned and slightly discoloured, otherwise fine. S.G. 51, cat £1,300. Photo. £200-£250

## 1918 Prepared For Use But Not Issued “4/CENTS” on 3c. Scarlet

*This surcharged stamp was produced to remedy a shortage of 4c. values when the inland letter rate was increased from 3c. to 4c. on 1st. January 1918. Five million were printed but in April of that year nine million 4c. stamps were produced, thus obviating the need for the surcharges. It was decided that they should be packed in weighted boxes and sunk at sea but somehow a very few survived, believed to be only four or five in total.*



- 248 ☆ “4/ CENTS” on 3c. scarlet, small part original gum, fine and extremely rare. B.P.A. certificate (2001). Photo also on back cover. £5,000-£6,000

**Federated Malay States: 1918 Unissued “4/CENTS” on 3c. Scarlet continued**



- 249 ☆ “4/ CENTS” on 3c. scarlet, small part original gum, fine and extremely rare. R.P.S. certificate (1965). Photo. £5,000-£6,000



- 250 ☆ “4/ CENTS” on 3c. scarlet, small part original gum, fine and extremely rare. Photo. £5,000-£6,000

**1922–34 Watermark Multiple Script CA**



Ex 251



253



252



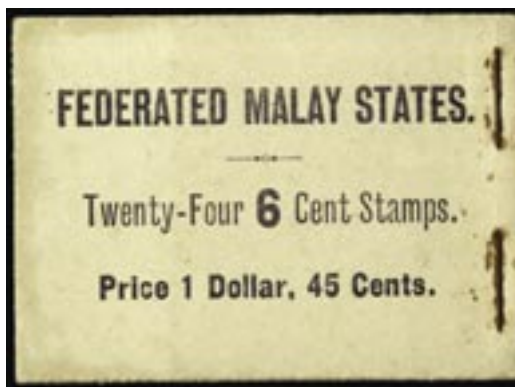
254



258

- 251 ★ 1c. to \$5 (both) with most listed shades, mainly good to fine mint. S.G. 52-81. Photo. £180-£200
- 252 ○ 4c. orange, showing variety watermark missing A in CA, used with “IPOH” c.d.s., fine. S.G. 60 var, unpriced. Photo. £300-350
- 253 ★ 田 50c. black and orange watermark Crown to right of CA, mint block of four, very slight trace of gum toning, otherwise fine. S.G. 74aw, cat £560+. Photo. £180-£200
- 254 ★ \$25 green and orange, fine mint. S.G. 82, cat £950. Photo. £350-£400

**Federated Malay States** continued



- 255 B Booklets: 1922 \$1. 45c black on buff booklet, unusually stapled at right, complete except for two panes lacking two stamps each, some staining, otherwise fine and rare. S.G. SB7. Photo. £800-£1,000
- 256 Collections: A mainly used collection on leaves, incl. 1900-01 1c. to 50c. (3) with shades, 1904-22 8c. grey and ultramarine on chalk surfaced paper mint, 50c. grey and orange with watermark Crown to the right of CA, values to \$5 (both), Postage Dues, with Malayan Postal Union 1936-38 1c. horizontal strip of three with "SPECIMEN" perforin stuck-down on piece, B.M.A. 1945-48 1c. to \$5 sets (2) mint and used (some doubtful cancellations), etc., chiefly fair to fine. (445 approx.). £700-£800
- 257   Revenues: 1900-28 watermark CC \$25 green and orange, good fiscally used block of four. Barefoot 2. £100-£120
- 258  - 1926-28 \$250 purple and blue, fine fiscally used. Barefoot 8. Photo. £70-£90

**Malayan Postal Union: Postage Dues**



259



260

- 259  1945-49 9c. vertical strip of five used on reverse of 1948 envelope to Kuala Lumpur from England with 1c., (2) and 3c. (3), fine. S.G. D7, D8, D11. Photo. £100-£150
- 260  - 15c. four vertical pairs used on reverse of 1946 envelope from England to Penang, fine. S.G. D12. Photo. £100-£150



## Federated Malay States continued



- 261 ☉ 田 1966 50c. black, in a fine unmounted mint block of four from the foot of the sheet, a rare multiple. S.G. D30, cat £3,800. Photo.

*This stamp is one of the rarest issued stamps of the Commonwealth. In 1968, by chance, a collector living in Singapore made an appointment to look at the stamp stock of postage dues on the day of their withdrawal resulting from Singapore's decision to issue their own postage due stamps. The collector (Derek Clayton) noticed the different watermark on the 50 cent of the set he was buying and asked if he could buy some more. The stamps he purchased that day are the main source of mint stamps in public hands. He managed to purchase twenty-five in total and was later able to establish that there were only another seven mint examples in private hands.*

*From the very small number of used stamps, apparently equally rare, it appears clear that this stamp was supplied only to Singapore and, as further confirmation, the examples in the Crown Agents archive at the British Library are marked "SINGAPORE". Whilst the main Post Office used up the watermark Multiple Script CA issue 50 cents, any new Post Offices opened (for example, Katong) were supplied with the Block CA watermark issue. We note that there was no block of this stamp in the Clayton collection when it was sold, but that he had been persuaded to sell a block to Her Majesty the Queen. Indeed, the Crown Agents original block was of six but is now of five, with a note that one stamp has been officially removed officially and sent to the Palace. Clayton also consigned one block to a rarities auction and it has changed hands several times since. This may be the only mint block in private hands.*

£2,000-£2,500

## British Military Administration



- 262 ○ 1945-48 2c. orange die II, variety watermark inverted, fine used, rare. S.G. 2w, cat £1,400. Photo. £800-£1,000
- 263 ○ - 25c. dull purple and scarlet, showing variety "A" of "CA" missing from watermark, used, slightly faded, small surface fault at left, otherwise fine and rare. *This is the discovery example that led to the catalogue listing and is currently the only recorded example.* B.P.A. certificate (2007). S.G. 13ac, cat £2,000. Photo. £1,000-£1,200
- 264 ★ - Unissued 8c. grey, good mint. S.G. cat £375. Photo. £100-£120
- 265 ☆ 1946 **Victory** unissued 8c. carmine, fine unused from the right of the sheet. S.G. cat £400. Photo. £120-£150

**British Military Administration** continued



Ex 266



267

- 266 ○ **Revenues:** 1945 K.G.VI \$25 and \$100, fine fiscally used in Kuala Lumpur. Barefoot 1, 2. Photo. £150-£180
- 267 ▲ - 1945 K.G.VI \$100, fine fiscally used on small piece in Kuala Lumpur. Barefoot 2. Photo. £100-£120

**Johore**



- 268 ○ 1876 Handstamped with Crescent and Star, Type 1, 2c. brown, fine used and rare. R.P.S. certificate (1956). S.G. 1, cat £4,750. Photo. £1,800-£2,000

**1884 (June)–86 “JOHORE” Overprints, Types 2–8**



269



270



Ex 271

- 269 ○ 2c. pale rose, type 3, a good used example. S.G. 3, cat £600. Photo. £200-£250
- 270 ○ 2c. pale rose, type 5, a good used example. S.G. 5, cat £600. Photo. £200-£250
- 271 ★ 2c. pale rose, types 6 and 8, fine mint. S.G. 6, 8, cat £265. Photo. £100-£120

**1884 (Aug.)–91 “JOHOR” Overprints, Types 9–16**



Ex 272



273

- 272 ☆ 2c. pale rose, types 9, 10 (4, one with thin “J”, two are bright rose), 9 and 11 in pair, 12, 13, 14 and 15, mint or unused, fair to fine. S.G. 9, 11-15, cat £610. Photo. £150-£200
- 273 ☆ 2c. pale rose, type 9 with variety “JOHOR” double, unused, thin at top, otherwise fine. R.P.S. certificate (1988). S.G. 9a, cat £800. Photo. £120-£150

**Johore: 1884 (Aug.)–91 “JOHOR” Overprints, Types 9–16 continued**



274



275



276

- 274 ★ 2c. pale rose, type 10, with variety “JOHOR” double, fine mint. S.G. 10cb, cat £850. Photo. £250-£300
- 275 ☆ 2c. pale rose, type 11, with variety “JOHOR” double, unused, part original slightly brown gum, fine. R.P.S. certificate (1999). S.G. 11 var, unpriced. Photo. £1,000-£1,200
- 276 ★ 2c. pale rose, type 12, with variety “JOHOR” double, mint, corner crease, minor toning, otherwise fine. S.G. 12a, cat £750. Photo. £200-£250



- 277 ★ 2c. bright rose, type 16, fine mint and very rare, *only six recorded*. R.P.S. certificate (1977). S.G. 16, cat £9,000. Photo also on back cover. £4,500-£5,000

**1891 (May) Surcharges, Types 17–20**



279



280



Ex 281



282

- 278 ☆ 2c. on 24c. green types 17, 18, 19 and 20, unused or part original gum, good to fine. S.G. 17-20, cat £319. £100-£120
- 279 ☆ 2c. on 24c. green type 17 with variety “CENST”, unused with small part original gum, usual slightly clipped perfs at left (which occurred when the Postmaster removed the stamps from the sheets), otherwise fine. S.G. 17a, cat £900. Photo. £200-£250
- 280 ▲ 2c. on 24c. green type 17 with variety “CENST”, used on piece, usual clipped slightly perfs, fine. S.G. 17a, cat £475. Photo. £200-£220
- 281 ☆ 2c. on 24c. green types 17 and 20 both variety watermark inverted, unused, type 20 creased but with part original gum, otherwise fine. S.G. 17w, 20w, cat £620. Photo. £120-£150
- 282 ○ 2c. on 24c. green type 18 with variety thin, narrow “J”, used, minute thin over watermark otherwise fine. S.G. 18a, cat £450. Photo. £100-£120



**1894 (Mar.) Surcharges, Type 22**



Ex 283



284

- 283 ★ 3c. on 4c. (unused), 3c. on 5c. both with variety no stop, also 3c. on 6c. pair, one with variety no stop, mint, good to fine. S.G. 28a, 29a, 30a, cat £405. Photo. £100-£120
- 284 ★ 3c. on \$1 mint pair, right stamp showing no stop, a few blunted perfs, otherwise fine. S.G. 31, a, cat £437. Photo. £150-£200

**1903 (Oct.) Surcharges, Types 30–31**



- 285 ★ \$1 on \$2 dull purple and carmine showing variety “e” of “One” inverted, mint, two very slight gum creases, otherwise fine and rare. S.G. 57a, cat £1,600. Photo. £600-£700

**1904–10 Issue**



Ex 286

- 286 S 1c. to \$100 set of seventeen values handstamped “SPECIMEN” in violet, all affixed to separate pieces, mostly fine and possibly a unique set. Ex De La Rue archives. S.G. 61-77. Photo. £800-£1,000



287



288



Ex 289

- 287 ☆ \$50 green and ultramarine, fine and fresh unmounted mint from the foot of sheet. S.G. 76, cat £275. Photo. £120-£150
- 288 ★ \$100 green and scarlet, mint, toned gum, otherwise fine. S.G. 77, cat £425. Photo. £100-£120
- 289 ★ 1918-20 Watermark Multiple Crown CA 2c. to \$10 set, mainly fine mint. S.G. 89-102, cat £500. Photo. £120-£150

**Johore: 1922-40 Watermark Multiple Script CA**



Ex 290



291



Ex 292



293



294



295



296



297 (reduced)

- 290 ★ 1c. to \$10 set, mainly fine mint. S.G. 103-125, cat £500. Photo. £120-£150
- 291 ★ \$4 green and brown, with variety watermark inverted, mint, gum very faintly toned, otherwise fine and rare. S.G. 123w, unpriced. Photo. £300-£400
- 292 S \$50 green and ultramarine and \$100 green and scarlet, both overprinted "SPECIMEN", odd short perfs, otherwise fine with gum. S.G. 126s, 127s, cat £490. Photo. £150-£180
- 293 ★ \$50 green and ultramarine, fine mint. S.G. 126, cat £850. Photo. £350-£400
- 294 ★ \$100 green and scarlet, fine mint. S.G. 127, cat £1,600. Photo. £800-£900
- 295 S \$500 blue and red, overprinted "SPECIMEN", fine and fresh with gum. S.G. 128s, cat £850. Photo. £300-£350
- 296 O \$500 blue and red, fiscally used, a few imperfections, good appearance. S.G. 128. Photo. £100-£120
- 297 ▲ P 1950 Mosque \$25 red and brown, \$100 purple and blue and \$250 black and green affixed to part sheet ex De La Rue Archives, headed "Specimens of Revenue Stamps" ("Special" deleted), "Date of Issue 1/6/50", and "Date of Withdrawal w.e.f.", fine and rare. Photo. £500-£600
- 298 A collection on leaves, incl. 1891-94 1c. to \$1 set used, 1896-99 1c. to \$5 sets (2) mint and used, 1903 (Oct.) \$1 on \$2 used, 1904-10 1c. to \$10 mint, and to \$10 used, also 10c. on chalk surfaced paper mint and used, 1910-19 1c. to \$1 sets mint and used, 1922-40 to \$5 used, 1938 Postage Due set mint, etc., chiefly fair to fine, some fiscal or doubtful cancellations. (approx. 255). £800-£1,000
- 299 A Q.V. selection on leaves, incl. 1884 (June)-86 2c. pale rose type 6 unused and used, 1884 (Aug)-91 2c. pale rose type 11 used, etc., fair to fine. (20). £200-£250

## Kedah



308



Ex 300



301



Ex 306



302



305



303

- 300 ○ 1919-21 1c. brown and 3c. deep purple, both with variety watermark inverted and reversed, fine used. S.G. 15y, 19y, cat £395. Photo. £100-£120
- 301 ★ - 25c. blue and purple, showing variety "A" of "CA" missing from watermark, mint, minor gum wrinkles, otherwise fine. S.G. 23a, cat £550. Photo. £200-£250
- 302 ★ 1919 (Mar.) 50c. on \$2 green and brown, showing variety "C" of "CENTS" inserted by hand, mint, missing perfs at top, sweated gum, otherwise fine and rare. R.P.S. certificate (1978). S.G. 24a, £1,300. Photo. £400-£450
- 303 ☒ 1922 Malaya-Borneo Exhibition 1c., 2c., 3c. (with small second "A" in "MALAYA"), 4c., 10c., 21c., 25c. and 50c. (with raised stop after "EXHIBITION"), fine used on 1922 (May 22) registered cover from Alor Star to Penang. Photo. £400-£500
- 304 - Selection on leaves, incl. varieties with raised stop after "EXHIBITION" 21c., 25c., 50c. oval last "O" in "BORNEO" 21c., 25c. and 50c. mint, used with many faked cancellations, etc. (86). £300-£350
- 305 ★ - Watermark Multiple Crown CA 25c. blue and purple, with variety overprint inverted (shows thin first "I" in "EXHIBITION" and small second "A" in "MALAYA"), fine mint, very rare. S.G. 43a, cat £1,300. Photo. £700-£800
- 306 ★ 1938-40 redrawn 1c. black (usual brown gum) and 2c. bright green mint, minor gum wrinkle, otherwise fine. S.G. 68a, 69. Photo. £100-£120
- 307 A mint and used collection on leaves, incl. 1912 1c. to \$5 set mint, also 20c. with wmk reversed mint, 1919-21 1c. with wmk inverted mint, 3c. with wmk inverted and reversed mint, 4c. rose with short sheaf used, 1919 (March) 50c. on \$2 mint and used, 1921-32 1c. to \$5 sets mint and used, 1922-40 5c. with wmk inverted mint, 1922 Malaya-Borneo Exhibition set mint, 1937 set mint, 1938-40 redrawn 1c. and 2c. mint, 1957 5c. mint vertical pair showing perforation shift, etc., some fake or doubtful cancellations, mainly good to fine. (180). £700-£800
- 308 ☆ Revenues: 1937 \$500 black and green, unmounted mint vertical strip of three from the lower left corner of the sheet, usual treacly gum, one has a few marks at foot, scarce. Barefoot 6. Photo. £600-£700



## Kelantan



- 309 ★ **1922 Malaya-Borneo Exhibition** 1c. green with partial doubling of overprint (not completely double) mint with B.P.A. certificate (1998). S.G. 37 var. Photo. £120-£150
- 310 A mint and used collection on leaves, incl. 1911-15 MCA 1c. to \$5 sets (2) mint and used, 1922 Malaya-Borneo Exhibition mint and used to \$2, 1937-40 Sultan set mint, etc., some doubtful cancellations, varied condition. (107). £600-£700

## Negri Sembilan: Sungei Ujong



- 311 ☆ **1878 Overprinted type 1** “(crescent and star)/SU” in oval, 2c. brown unused, a few minor marks on reverse, otherwise fine and rare. B.P.A. certificate (2002). S.G. 1, cat £3,000. Photo. £1,200-£1,500



312



Ex 313



314

- 312 ☆ **1881 Overprinted “SUNGEI/UJONG”**, 2c. brown types 2 + 6 and 2 + 7, unused, the former with a few blunted perfs, otherwise fine. S.G. 4, 6, cat £725. Photo. £180-£200
- 313 ☆ - 2c. brown set of the five types, unused, some with part gum, mostly good to fine. S.G. 7-11, cat £1,625. Photo. £500-£600
- 314 ☆ **1881 Overprinted “SUNGEI/UJONG”**, 2c. brown type 11 + 14, with variety “S” inverted, unused, fine and rare. R.P.S. certificate (2000). S.G. 10a, cat £3,750. Photo. £1,200-£1,500



315



316



317

- 315 ☆ **1882 Overprinted “S.U.”**, 2c. brown (2) with and without stops, unused, the latter with gum, good condition. S.G. 12, 13, cat £575. Photo. £150-£180
- 316 ○ - 2c. brown without stops, fine used, scarce. S.G. 13, cat £325. Photo. £120-£150
- 317 ☆ - 4c. rose, fresh unused with good colour, a few blunted perfs, otherwise fine and very rare. B.P.A. certificate (2003). S.G. 14, cat £3,500. Photo. £1,200-£1,500

## 1882 (Dec.)–84 Overprinted “SUNGEI/UJONG”



318



320



321

- 318 ○ 2c. brown type 12 + 14, used with red Chinese chop cancellation, minor crease, scarce. S.G. 15, cat £450. Photo. £80-£100
- 319 ☆ 2c. pale-rose types 12 + 14, 11 + 14, 16 + 14, 17 + 14 and 12 + 18, unused, some with gum, one discoloured otherwise good to fine. S.G. 17-21, cat £750. £120-£150
- 320 ☆ 2c. pale rose types 12 + 18 with type 18 double, unused, part original gum, missing perf at top, otherwise fine and very rare. *Believed to be the only recorded example.* B.P.A. certificate (1962). S.G. 21a, cat £1,100. Photo. £500-£600
- 321 ★ 4c. rose types 12 + 14, fine mint, rare. S.G. 22, cat £1,600. Photo. £900-£1,000
- 322 ☆ 4c. rose types 11 + 14, unused, slight bend, otherwise fine and rare. *One of only seven existing examples.* B.P.A. certificate (1967). S.G. 23, cat £2,500. Photo. £800-£1,000



322



323



324



325

- 323 ☆ 8c. orange type 12 + 14, unused, small part original gum, slight horizontal crease, otherwise fine appearance, rare. B.P.A. certificate (1996). S.G. 24, cat £1,900. Photo. £600-£700
- 324 ☆ 8c. orange type 11 + 14, unused with traces of gum, a few tone spots on reverse, otherwise fine and attractive, rare. S.G. 25, cat £3,250. Photo. £1,000-£1,200
- 325 ☆ 10c. slate type 11 + 14, fine unused. B.P.A. certificate (1997). S.G. 27, cat £850. Photo. £300-£350

## 1883–84 Overprints



326



327



328

- 326 ★ 2c. brown with variety “SUNGEI” double, mint, slight crease, a few blunted perfs, otherwise fine and rare. R.P.S. certificate (1962). S.G. 30a, cat £1,200. Photo. £600-£700
- 327 ☆ - 2c. pale rose type 16 + 21, showing “SUNGEI” double, unused, slight thin, otherwise fine. S.G. 31 var. Photo. £200-£300
- 328 ☆ - 4c. brown, the three types, unused, some small part original gum, the last unused, good. S.G. 34-36, cat £825. Photo. £180-£200

## 1885–90 Overprints



- 329 ☆ 2c. pale rose type 28 with variety overprint double, unused, small thins at top, otherwise fine and rare. B.P.A. certificate (2004). S.G. 43c, cat £1,400. Photo. £400-£500



- 330 ★ 2c. pale rose type 29. mint horizontal pair, the right hand stamp showing variety “UNJOG”, mint, minor toning on gum, otherwise fine and of fresh appearance, very rare. S.G. 44, a, cat £4,840+. Photo also on back cover. £3,000-£3,500



331



332

- 331 ○ 2c. pale rose type 29, showing variety “UNJOG”, fine used with red barred cancellation, rare. B.P.A. certificate (1967). S.G. 44a, cat £3,250. Photo. £1,500-£1,700
- 332 ○ 2c. pale rose type 29, showing variety “UNJOG”, fine used with black barred cancellation, rare. R.P.S. certificate (1940). S.G. 44a. Photo. £1,500-£1,700



333



334

- 333 ☆ 2c. pale rose type 30, showing variety antique “G” in “SUNGEI”, fine unused with part original gum. B.P.A. certificate (2004). S.G. 45a, cat £375. Photo. £120-£150
- 334 ☆ 2c. pale rose type 30, showing variety antique “G” in “UJONG” [R. 8/3], unused, small part original gum, fine. B.P.A. certificate (2004). S.G. 45b, cat £375. Photo. £120-£150



## 1891 Surcharges



335



336

- 335 ★ 2c. on 24c. green type 31, mint, minor crease, otherwise fine. S.G. 46, cat £900. Photo. £250-£300
- 336 ○ 2c. on 24c. green type 31, fine used with violet c.d.s. and manuscript markings. B.P.A. certificate (1978). S.G. 46, cat £1,000. Photo. £300-£350



337



338

- 337 ★ 2c. on 24c. green type 32, fine mint, fresh appearance. S.G. 47, cat £350. Photo. £120-£150
- 338 ○ 2c. on 24c. green type 32, used with violet barred cancellation, minor thin, otherwise fine. S.G. 47, cat £400. Photo. £150-£180



339



340

- 339 ☆ 2c. on 24c. green types 33 and 34, unused with part original gum, minor toning, otherwise fine. S.G. 48, 49, cat £1,100. Photo. £350-£400
- 340 ○ 2c. on 24c. green type 33, used with violet barred cancellation, slightly soiled, otherwise fine. S.G. 48, cat £1,000. Photo. £300-£350



341



342

- 341 ★ 2c. on 24c. green type 34, with variety watermark inverted, mint, a few minor creases, corner fault, otherwise fine and rare. S.G. 49w, cat £425. Photo. £100-£150
- 342 ○ 2c. on 24c. green type 34, with variety watermark inverted, used with violet c.d.s., cancellation causes slight bend. S.G. 49w, cat £450. Photo. £180-£200
- 343 A collection on leaves, incl. 1882-84 2c. pale rose type 16 + 14 used (2), 10c. slate type 12 + 14 used, 1883-84 2c. pale brown the three types unused, type 16 + 19 used (thinned), 2c. pale rose, the three types unused, type 17 + 21 and 12 + 21 used, 1885-90 2c. pale rose types 22, 24, 25, 29, unused, also type 25 used, etc., chiefly fair to fine. (44). £400-£500

## Negri Sembilan: Negri Sembilan

1898 (Dec.)–1900 Surcharges



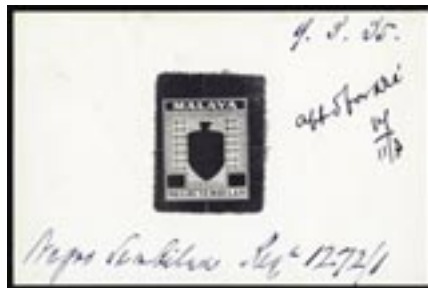
344



345

- 344 ☛ 田 1c. on 15c. green and violet, unmounted mint block of four, one showing raised stop, some offset of violet on gum, otherwise fine. S.G. 15, a, cat £725+. Photo. £200-£250
- 345 ○ 4c. on 8c. dull purple and ultramarine, showing variety surcharge in green double, used, some central thinning, nevertheless extremely rare used. R.P.S. certificate (1934). S.G. 19b, cat £2,250. Photo. £700-£800

1935–41 Arms Issue



346



347

- 346 P Master die proof of frame with uncleared value tablets and surround, in black on glazed card (92 x 60mm) dated "9. 3. 35", endorsed "Appd for Die/(initials)/11/3" and "Negri Sembilan Req'n 1272/1", fine. Photo. £400-£500
- 347 P Master die proof of the coat of arms vignette, in black on glazed card (92 x 60mm), dated "18. 5. 35", endorsed "Appd/(initials)/20/5" and "Negri Sembilan Req'n 1272/1", fine. Photo. £300-£400

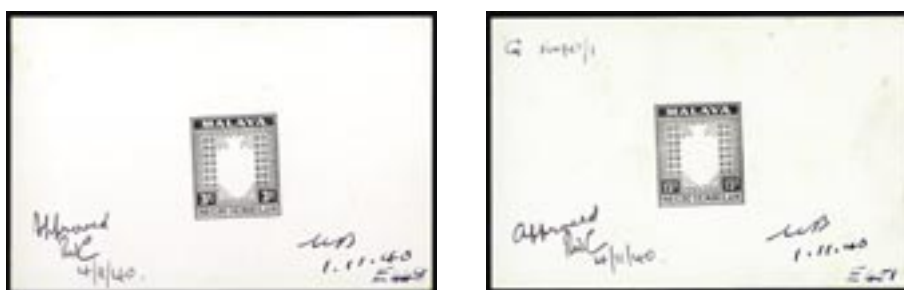


- 348 P \$1, \$2 and \$5 die proofs of the frames with error "\$" after figure of value, all in black on glazed card (92 x 60mm), dated "30. 5. 35" and endorsed "Appd/(initials)/30/5" and "Negri Sembilan Req'n 1272/1", fine. Photo. £1,200-£1,500

**Negri Sembilan: 1935–41 Arms Issue** continued



- 349 P 1c. to \$5 set of set of thirteen values from original requisition (\$ values dated 1936 due to correction of dollar sign error), die proofs of the frame all in black on glazed card (92 x 60mm) marked and dated between May 23 1935 and February 26 1936 and all endorsed “Negri Sembilan Req’n 1272”, the 50c with mark from paper clip, otherwise mainly fine. Photo. £4,000-£5,000



- 350 P Die proofs of the 1941 issue 3c. and 15c. both in black on glazed card (92 x 60mm.) both dated “1.11.40” and further marked “Approved/(initials)/4/11/40”, the 15c. with a few surface marks, otherwise fine. Photo. £600-£800



351



352

- 351 ⚙️ 6c. scarlet in a fine unmounted mint block of four from the foot of sheet showing plate number “1”, one stamp with stop omitted at right. S.G. 27, a, cat £500+. Photo. £150-£180

- 352 ⚙️ 1961 prepared for use but not issued 25th. Anniversary of the Accession 10c., an unmounted mint block of four from the top of the sheet with part Enschedé imprint, the gum a little yellow as usual, fine and rare. Photo £1,200-£1,400

- 353 A mint and used collection on leaves, incl. 1891-94 2c. rose in a pane (6 x 10) one showing short “N” mint, 1895-99 1c. to 50c. sets (2) mint and used, 1898-1900 1c. on 15c. green and violet mint, 4c. on 3c. dull purple and carmine showing bar partly double mint, etc., majority good to fine. (104). £300-£400



## Pahang



354



355



356



357

- 354 ★ 1889 (Jan.) 8c. orange, overprint type 1, fine mint, rare. S.G. 2, cat £1,800. Photo. £800-£900
- 355 ○ - 8c. orange, overprint type 1, fine used with Singapore cancellation, rare. S.G. 2, cat £1,800. Photo. £800-£900
- 356 ★ 1889 2c. bright rose with overprint type 2a antique letters, slight faults, otherwise fine. S.G. 4ab, cat £850. Photo. £150-£200
- 357 ○ 1890 2c. bright rose overprint type 3, perf missing at left, otherwise fine used, rare. B..P.A. certificate (1990). S.G. 5, cat £2,000. Photo. £700-£800

## 1891 Surcharges



358

- 358 ☆ 2c. on 24c. green, the four types, unused or mint, good to fine. S.G. 7-10, cat £2,340. Photo. £700-£900



Ex 359



360



361

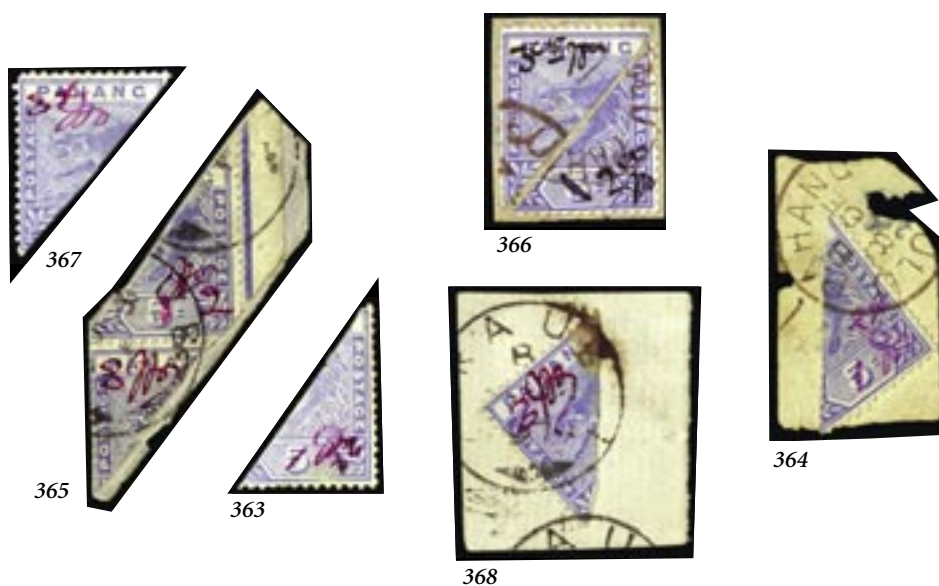
- 359 ☆ 2c. on 24c. green types 5 and 8, unused, the former thinned, otherwise fine. S.G. 7, 10, cat £1,090. Photo. £200-£250
- 360 ○ 2c. on 24c. green type 6, used, horizontal crease, otherwise fine, rare and attractive. S.G. 8, cat £1,100. Photo. £250-£300
- 361 ○ 2c. on 24c. green type 7, fine used. S.G. 9, cat £400. Photo. £150-£180

## 1897 Kuala Lipis Provisionals



- 362 ▲ 3c. on half of 5c. blue, bisected horizontally, used on small piece with red c.d.s., some soiling, otherwise fine and rare. S.G. 17a, cat £2,000. Photo. £900-£1,000

1897 Kuala Lipis Provisionals continued



- 363 ☆ 2c. on half of 5c. blue bisected diagonally ('2' inverted), unused, small part original gum, minute nick at left, otherwise fine and rare. S.G. 18, cat £1,500. Photo. £700-£800
- 364 ▲ 2c. on half of 5c. blue, bisected diagonally, used on piece, fine. S.G. 18, cat £375. Photo. £120-£150
- 365 ▲ 2c. on half of 5c. and 3c. on half of 5c. a used se-tenant pair on fragment, unusually cut raggedly, otherwise fine. S.G. 18b, cat £1,000. Photo. £300-£350
- 366 ○ 2c. on half of 5c. blue and 3c. on half of 5c. blue bisected diagonally and both with manuscript surcharge in black, fine used, both affixed to a piece at a later date. Brandon certificate (2003). S.G. 18c, 18dc, cat £6,000. Photo. £2,500-£3,000
- 367 ☆ 3c. on half of 5c. blue bisected diagonally, unused, part original gum, fine. B.P.A. certificate (2000). S.G. 18d, cat £1,500. Photo. £700-£800
- 368 ▲ 3c. on half of 5c. blue bisected diagonally, used on piece, some discolouration caused by postmark ink but fine. S.G. 18d, cat £375. Photo. £120-£150



(detail)

- 369 ☒ 3c. on half of 5c. blue bisected diagonally, surcharge in black manuscript, fine used on 1897 (Aug. 4) envelope to Kuala Lipis, tied by red "ULU PAHANG" c.d.s., a few cover faults at top, otherwise fine and very rare. Ex Wood. S.G. 18dc, cat £3,000 off cover. Photo. £4,000-£6,000

## Pahang: 1898–99 Overprints on Stamps of Perak



Ex 370



Ex 371



372

- 370 ★ 10c. to 50c. (both), 50c. dull purple and greenish black regummed, others good to fine mint. S.G. 19-22, cat £806. Photo. £200-£250
- 371 ○ 10c., 25c. and 50c. green and black (2), used, fair to fine. S.G. 19, 20, 21, cat £885. Photo. £200-£250
- 372 ☆ \$1 green and pale green \$5 green and ultramarine, the former fine mint, the latter with disturbed gum and slight faults. S.G. 23, 24, cat. 1,775. Photo. £300-£350

## 1898 Surcharges



373

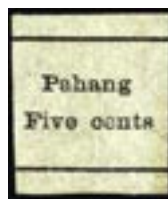


374

- 373 ○ 4c. on 8c. dull purple and ultramarine, with variety surcharge inverted, used, slightly soiled, otherwise fine. S.G. 25a, cat £1,500. Photo. £600-£700
- 374 ★ 4c. on 8c. dull purple and ultramarine, with variety surcharge double, fine mint, scarce. Philatelic Foundation certificate (1992). S.G. 25b, cat £900. Photo. £450-£500



375



376

- 375 ▲ 1898 "Pahang" surcharge type 13 4c. on plain paper (no stamp), fine used on small piece with Kuala Lipis c.d.s., showing trace of pin-perf. separations, rare. B.P.A. certificate (1952). S.G. 26, cat £3,750. Photo. £1,800-£2,000
- 376 ☆ 1898 "Pahang" surcharge type 13 5c. on plain paper (no stamp), unused, small fault at right, otherwise fine. S.G. 27, cat £2,500. Photo. £600-£800
- 377 Collections: A collection on leaves, incl. 1889 (Jan.) 2c. pale rose and 10c. slate unused and used 1898-99 overprinted on stamps of Perak \$1 used (faults), 1890 2c. bright rose type 4 unused, etc., the majority good to fine. (28). £300-£350



## Penang



378



379



380

- 378 ☆ 1960 50c. black and blue imperforate horizontal pair from the left of the sheet, small paper crease, otherwise fine and attractive. S.G. 62a, cat £425. Photo. £120-£150
- 379 ☆ 1965-68 5c. with variety blue and yellow omitted, fine unmounted mint. S.G. 68da, cat £375. Photo. £120-£140
- 380 ☆ - 15c. with variety green (value and leaves) omitted, fine unmounted mint. S.G. 71b, cat £375. Photo. £120-£140

## Perak

### 1879 Overprinted “(crescent and star)/P”, Type 1



- 381 ☆ 2c. brown, unused, minute tear at lower right, otherwise fine and rare. R.P.S. certificate (1988). S.G. 1, cat £2,000. Photo. £300-£400

### 1880–81 “PERAK” Overprints, Types 2–9



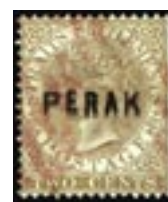
382



383



384



385

- 382 ☆ 2c. brown type 2, unused, one pulled perf at top, minor perf toning, otherwise fine and very rare. Ex Koh and Block. S.G. 2, cat £2,250. Photo. £1,000-£1,200
- 383 ○ 2c. brown type 3, used, a few blunted perfs, otherwise fine. S.G. 3, cat £700. Photo. £200-£220
- 384 ○ 2c. brown type 4, used, the upper right corner added, nevertheless a rare item. S.G. 4, cat £700. Photo. £80-£100
- 385 ○ 2c. brown type 6, with variety overprint double, fine used with red barred cancellation. *Extremely rare, believed to be the only recorded example.* S.G. 8a, cat £1,800. Photo. £1,000-£1,200

**Perak: 1882–83 “PERAK” Overprints, Types 9–11**



386



387



388

- 386 ☆ 2c. brown type 9, showing variety overprint double, unused, part original gum, faintly toned, tiny thin spots at top, otherwise fine. B.P.A. certificate (1983). S.G. 10a, cat £650. Photo. £200-£250
- 387 ★ 2c. pale rose type 11, with variety overprint double, mint, thin in centre, otherwise fine. S.G. 13a, cat £700. Photo. £120-£150
- 388 ☆ 2c. pale rose type 11 with variety overprint double, fresh unused with small part original gum, fine. S.G. 13a. Photo. £150-£200

**1883 (July) Surcharges, Types 12–13**



- 389 ☆ 2c. on 4c. rose, type 12, unused, traces of gum, fine with good colour and rare. *Only six examples recorded.* Ex Dr. Cheah Way Mun. R.P.S. certificate (1980). S.G. 14, cat £3,250. Photo. £1,200-£1,500



- 390 ☆ 2c. on 4c. rose, type 12, variety surcharged on Straits Settlements no. 12 (Watermark Crown CC), unused, some defects but *the only recorded example.* Ex John Naylor. R.P.S. certificate (1976). S.G. 14a, cat £8,000. Photo. £3,000-£4,000



391



392



393

- 391 ○ 2c. on 4c. rose, types 11 and 9, used, the former with small corner fault and pen mark, otherwise fine. S.G. 15, 16, cat £675. Photo. £180-£200
- 392 ☆ 2c. on 4c. rose, type 9, unused as usual, exceptional condition for this. B.P.A. certificate (1970). S.G. 16, cat £600. Photo. £300-£350
- 393 ☆ 2c. on 4c. rose, type 9, unused with traces of gum, exceptional condition for this. S.G. 16. Photo. £300-£350

## 1884–91 “PERAK” Overprints, Types 14–20



394



395



396

- 394 ☆ 2c. pale rose type 14 with variety overprint inverted, part original gum, fine. S.G. 17b, cat £425. Photo. £180-£200
- 395 ☆ 2c. pale rose type 14 with variety overprint inverted, large part original gum, slightly soiled, otherwise fine. S.G. 17b. Photo. £100-£120
- 396 ☆ 2c. pale rose type 16, with variety “FERAK”, with “F” corrected to “P” by ink, unused, part original gum, fine. S.G. 19ab, cat £375. Photo. £120-£150



397



398



399

- 397 ☆ 2c. pale rose type 16, with variety “FERAK”, with “F” corrected to “P” by ink, unused with part original gum, fine. Brandon certificate (2004). S.G. 19ab, cat £375. Photo. £120-£150
- 398 ☆ 2c. pale rose type 17, with variety overprint double, unused, with some gum, fine and rare. S.G. 20a, cat £1,600. Photo. £500-£600
- 399 ☆ 2c. pale rose type 20, unused with gum, a few minor tone spots on reverse, otherwise fine and attractive. Rare, only very few recorded. Ex Koh. S.G. 23, cat £3,250. Photo. £1,200-£1,500

## 1886 Surcharges



400



401

- 400 ☆ 1c. on 2c. pale rose type 22, unused with part crackly gum, slightly soiled, otherwise fine. S.G. 25, cat £650. Photo. £200-£250
- 401 ☆ 1c. on 2c. pale rose type 22, unused, small surface faults, but good appearance. Ex Pratt, Koh and Bloch. S.G. 25. R.P.S. certificate (1962). Photo. £100-£150

## 1886 “One/CENT/PERAK” Surcharge, Type 26



- 402 ☆ 1c. on 2c. pale rose type 26, with variety “One” inverted, unused with crackly part gum, slightly soiled but very rare. S.G. 29a, cat £3,000. Photo. £1,000-£1,200



**Perak: 1886 “One/CENT/PERAK” Surcharge, Type 26 continued**



- 403 ☆ 1886 1c. on 2c. pale rose type 26, with variety surcharge double, unused, slightly rubbed at top, rare. B.P.A. certificate (1985). S.G. 29b, cat £1,200. Photo. £350-£400

**1887 “ONE CENT/PERAK” Surcharged Vertically, Type 27**



404



405

- 404 ☆ 1c. on 2c. pale rose type 27, with variety surcharge in black, unused, fine. Ex Pratt. R.P.S. certificate (1939). S.G. 30a, cat £1,900. Photo. £700-£800
- 405 ○ 1c. on 2c. pale rose type 27, with variety surcharge in black, used, blunt corner perf, otherwise fine and rare. B.P.A. certificate (1990). S.G. 30a, cat £1,400. Photo. £500-£600

**1887 “1/CENT/PERAK” Surcharge, Type 28**



- 406 ☆ 1c. on 2c. pale rose type 28, unused with part original gum, slightly toned on reverse at top, otherwise fine. S.G. 31, cat £900. Photo. £300-£350

**1887–89 Type 27 “One/CENT/PERAK” Surcharges, Type 30–37**



407



408



409



410

- 407 ☆ 1c. on 2c. pale rose type 30, variety surcharge double, unused, large part original gum, rare. Brandon certificate (2001). S.G. 33a, cat £1,200. Photo. £500-£600
- 408 ☆ 1c. on 2c. pale rose type 30, showing variety “One” double, unused, part original gum, a few minor stains on reverse, an unusual error. Ex Bloch. S.G. 33 var. Photo. £180-£200
- 409 ★ 1c. on 2c. pale rose type 32 mint pair, one showing variety “PREAK”, small crease at top, otherwise fine. S.G. 35, a, cat £650+. Photo. £180-£200
- 410 ○ 1c. on 2c. pale rose type 32, with variety “PREAK”, fine used. S.G. 35a, cat £800. Photo. £250-£300

1887–89 Type 27 “One/CENT/PERAK” Surcharges, Type 30–37 continued



411

412

413

414

- 411 ☆ 1c. on 2c. pale rose type 32, unused pair with part original gum, one showing variety “PREAK”, a few blunted perfs, otherwise fine, S.G. 35b, a, cat £800+. Photo. £200-£250
- 412 ☆ 1c. on 2c. pale rose type 35, unused, part original gum, minor faults but an attractive example. S.G. 38, cat £650. Photo. £180-£200
- 413 ○ 1c. on 2c. pale rose type 35, used with manuscript cancellation, fine. S.G. 38, cat £800. Photo. £120-£150
- 414 ☆ 1c. on 2c. bright rose type 36, showing “O”, “C” and “P” raised, unused, vertical crease, otherwise fine. S.G. 39 var, cat £350+. Photo. £180-£200

1891 Type 41 Surcharges with “PERAK” at top, Without Bar Over Original Value



415



416



417



418

- 415 ★ 1c. on 2c. bright rose, a mint vertical strip of five showing types 30, 41 and 34 (3) se-tenant, the lower stamp showing distinctive broken “O” and “N” in “CENT”, a rare and fine multiple. S.G. 53-55, cat £2,080 as singles. Photo. £1,400-£1,600
- 416 ★ 1c. on 2c. bright rose type 30, fine lightly mounted mint, fresh appearance. S.G. 53, cat £180. Photo. £100-£120
- 417 ☆ 1c. on 2c. bright rose type 34, unused, part original gum, fresh appearance. S.G. 55, cat £350. Photo. £120-£150
- 418 ☆ 1c. on 2c. bright rose type 37, unused, part original gum, small imperfections, otherwise fine. R.P.S. certificate (1979). S.G. 56, cat £850. Photo. £150-£200

## Perak: 1895–99 Issue



Ex 419



420



421

- 419 ★ 1c. to \$2, mint, mainly fair to good, also \$3 unused and toned. S.G. 66-78. Photo. £300-£350
- 420 ★ \$5 green and ultramarine, mint, a few minor imperfections, otherwise fine deep colour. S.G. 79, cat £500. Photo. £120-£150
- 421 S \$25 green and orange, overprinted "SPECIMEN", fine with gum. S.G. 80s, cat £275. Photo. £100-£120



- 422 ☆ \$25 green and orange, unused (regummed), small crease at right, nevertheless a rare high value, attractive. B.P.A. certificate (1997). S.G. 80, cat £9,000. Photo. £1,200-£1,500

## 1900 Surcharges



423



424

- 423 ☆ 3c. on 8c. dull purple and ultramarine, showing variety surcharge double, unused, small part original (dried) gum, fine. R.P.S. certificate (1979). S.G. 84c, cat £500. Photo. £120-£150
- 424 ☆ 3c. on \$1 green and pale green, with variety thinner "t" in "Cent", unused, some dried gum, slight crease, otherwise fine for this. S.G. 86a, cat £300. Photo. £80-£100
- 425 ☆ 3c. on \$1 green and pale green with variety watermark inverted, unused, slightly discoloured, otherwise fine and scarce. S.G. 86w, cat £400. £70-£80



426



Ex 427

- 426 ☆ 1900 Ipoh Provisionals "Postal/Receipt for/1 Cent", unused. Photo. £70-£90
- 427 ★ 1938-41 1c. to \$5 set, mainly fine mint. S.G. 103-121, cat. £750. Photo. £150-£200



1887–89 Type 27 “One/CENT/PERAK” Surcharges, Type 30–37 continued



429 (detail)



430

- 428 ☉ ☐ - 30c. dull purple and orange, late printing on striated paper, in an unmounted mint part sheet (10 x 9), one showing unlisted dented oval flaw [R. 1/6], mainly fine. S.G. 116, cat £855+. £300-£350
- 429 ☒ 1965-68 Flowers 15c. with variety black (country name and head omitted) fine used on 1970 envelope with four Sarawak values, scarce. *This variety, although listed under Perak could also be considered a Sarawak variety.* S.G. 168a, unpriced used. Photo. £300-£400
- 430 ☉ - 15c. with variety magenta (background) omitted, fine unmounted mint from the foot of the sheet. S.G. 168c, cat £750. Photo. £250-£300

**Officials: 1889 (Nov.) Overprinted “P.G.S.”**

- 431 ☆ An unused selection, comprising 2c. to 24c. set, also 2c. in irregular strip of three, one with variety no stop after “S” mint, 4c. (2) one with no stop after “S” and one with watermark inverted, and 1894 (June) 5c. blue with overprint inverted, mainly fair to fine. (20). £350-£400
- 432 ○ A used selection, incl. 2c. to 12c blue, watermark CA 24c. green (3), also two Revenues, etc., majority fair to good. (18). £200-£250



433



Ex 434



435

- 433 ☆ 2c. bright rose with overprint double, unused, large part original gum, fine. S.G. 01a, cat £850. Photo. £200-£250
- 434 2c., 4c., 6c., 8c., 10c., 12c. blue and watermark CA 24c. all showing wide space between “G” and “S”, unused, mostly with gum, 12c. off centre as usual, some faults but a good looking scarce group. S.G. 01b-06b, 09a, cat £2,260. Photo. £600-£800
- 435 ★ 12c. brown-purple, with variety wide space between “G” and “S”, large part original gum, well centred fine and scarce. B.P.A. certificate (1972). S.G. 07a, cat £850. Photo. £300-£350



436



437

- 436 ☆ 24c. green, unused, part original gum, small tone spot, otherwise fine. S.G. 08, cat £750. Photo. £180-£200
- 437 ☆ 24c. green, showing wide space between “G” and “S”, unused, small part original gum, some toned perfs, mainly on reverse, otherwise fine and a very rare variety on this stamp. S.G. 08a, cat £2,250. Photo. £700-£900

**Perak: Officials** continued



438



439

- 438 ○ 1894 (June) Overprinted "Service" 5c. blue, with variety overprint inverted, good used. S.G. 010a, cat £475. Photo. £120-£150
- 439 ○ 1897 Overprinted "Service" 5c. dull purple and olive-yellow, with variety overprint double, used, slightly toned, otherwise fine. S.G. 011a, cat £400. Photo. £100-£120

**Collections**

- 440 A Q.V. collection on leaves, incl. 1880-81 2c. brown types 6, 7 (3), 9 (3, one is used) unused, 1884-91 2c. pale rose types 16, 18 (2 one unused, one used), unused, 1886 1c. on 2c. pale rose type 24 unused and used, 1886 1c. on 2c. pale rose type 25 used and unused, 1887 1c. on 2c. pale rose type 28 used, 1889-90 1c. on 2c. bright rose type 38 unused, 1891 1c. on 6c. lilac set of the five type unused and used, 2c. on 24c. green the set of the five types unused and used, 1c. on 2c. bright rose type 39 used, etc., chiefly fair to fine. (111). £1,000-£1,200
- 441 1887 to 1900 selection on leaves, incl. 1895-99 1c. to 50c. dull purple and greenish black used, \$1, \$2, \$3, \$5 and \$25 (faded) used, also 1c. with malformed "C" unused and used, \$25 overprinted "SPECIMEN" also apparently unused and used with postal type cancellation, examples with pale colours, 1900 1c. on 2c. with "13 JY 1900" c.d.s. (earliest recorded date), 1c. on 2c. with antique "e", 3c. on 8c. and 3c. on 50c. both variety antique "e" in "One" mint, 3c. on 50c. variety no stop unused, 3c. on \$1 pair, one with thinner "t" in "Cents" fiscally used, also other uncatalogued varieties, etc. mixed condition. (57). £1,200-£1,500

**Perlis**



Ex 442

- 442 ★ 1949 U.P.U. set in fine unmounted mint imprint blocks of six, one 50c. showing unlisted variety replaced Crown (similar to St. Edward's Crown) in watermark. *The only recorded example to date.* Photo. £1,000-£1,200

## Selangor



- 443 ☆ 1883 (c.) Overprinted “(crescent and star)/S” in red on Straits Settlements 2c. brown, unused with wrinkled large part original gum, fine. Cat. £300. Photo. £100-£120

### 1881-83 Overprinted “SELANGOR”, Types 1–17 on 2c. Brown



444



Ex 445



Ex 446

- 444 ☆ Watermark Crown CC 2c. brown type 1 (inverted “S”) unused, part original gum, fine. Ex Bloch. S.G. 1, cat £550. Photo. £140-£160
- 445 ☆ - 2c. brown types 2, 3, 5 and 6, unused, some with gum, fair to fine. S.G. 2, 3, 5, 6, cat £750. Photo. £180-£200
- 446 ☆ Watermark Crown CA 2c. brown types 9, 10, 11, 2, 3, 16 and 17, unused, a few with gum, fair to fine. (7). Cat. £1,645. Photo. £350-£400



447



448

- 447 ○ - 2c. brown type 9, fine used. S.G. 9, cat £300. Photo. £100-£120
- 448 ○ - 2c. brown types 11, 3, 15 and 17, used, fair to fine. S.G. 11, 13, 17, 19, cat £900. Photo. £200-£250

### 1883-85 Overprinted “SELANGOR”, Types 2–23 on 2c. Pale Rose



Ex 449



Ex 450



451

- 449 ☆ 2c. pale rose, types 12, 14, 4, 15, 2, 18, 21, 22, 23, unused, some with gum, fair to fine. S.G. 20-25, 28-30, cat £1,690. Photo. £350-£400
- 450 ○ 2c. pale rose, types 4, 15 and 19, used, good to fine. S.G. 22, 23, 226, cat £445. Photo. £100-£120
- 451 ☆ 2c. pale rose, type 20, fresh unused with part gum, fine. S.G. 27, cat £500. Photo. £120-£150



**Selangor** continued



Ex 452



453



454



455



456



457



Ex 459



458

**1885-91 Selangor Overprints, Types 24-34 on 2c. Rose**

- 452 ☆ 2c. pale rose, types 24, 26, 27, 28 (2, with and without stop), 29, 30, 2c. bright rose types 28, 33, 34, mint or unused, fair to fine. S.G. 31, 33-38, 41-43, cat £944. Photo. £200-£250
- 453 ○ 2c. pale rose, type 24, with variety overprint double, used, minor crease, otherwise fine. S.G. 31a, cat £900. Photo. £300-£350
- 454 ○ 2c. pale rose, type 24, with variety watermark inverted, fine used with red c.d.s. *Believed to be one of only ten existing examples.* B.P.A. certificate (2004). S.G. 31w, cat £375. Photo. £120-£140
- 455 ☆ 2c. bright rose, type 30 horizontal, fresh unused, large part original gum, tiny stains on gum, otherwise fine, a fine example of this rarity. S.G. 38b, cat £3,750. Photo. £1,000-£1,200
- 456 ☆ 2c. pale rose, type 31 diagonal, fine unused part original gum, rare. B.P.A. certificate (2003). S.G. 39, cat £2,250. Photo. £1,000-£1,200
- 457 ☆ 2c. pale rose, type 32, part original gum, faintly soiled, otherwise fine. S.G. 40, cat £650. Photo. £180-£200

**1891 Surcharged "SELANGOR/Two/CENTS"**

- 458 ★ 2c. on 24c. green mint vertical strip of five, with slightly brownish gum, comprising types 35 (2), 36, 37 and 38 se-tenant, otherwise fine and scarce. S.G. 44-47, cat £544+. Photo. £250-£300
- 459 ☆ 2c. on 24c. green, a set of the five types, one unused, the others with gum, fair to fine. S.G. 44-48, cat £702. Photo. £150-£180

## 1895–99 Issue



Ex 460



461



462

460 ★ 3c. to \$2, mainly fine mint. S.G. 54-62, cat £850. Photo. £200-£250

461 ★ 50c. dull purple and greenish black with variety dented frame, fine and fresh mint. S.G. 59a, cat £375. Photo. £100-£120

462 ★ \$3 green and ochre, mint, slightly heavily mounted, otherwise fine. S.G. 63, cat £550. Photo. £200-£250



463



464



465

463 ★ \$5 green and blue, fine and fresh mint. S.G. 64, cat £250. Photo. £100-£120

464 ★ \$10 green and purple, fine and fresh mint. S.G. 65, cat £700. Photo. £300-£350

465 ★ \$25 green and orange, mint, large part original gum with minor disturbance, fine and rare. S.G. 66, cat £3,250. Photo. £1,500-£1,800

## 1900 (Oct.) Surcharges



466



467



468

466 ☆ 1c. on 50c. green and black, with variety "One cent" repeated at left, unused, small part original gum, interval margin at left (folded through perfs and reinforced with hinge), very rare. *Believed to be one of only ten existing examples.* S.G. 66bc, cat £2,750. Photo. £1,400-£1,600

467 ★ 田 3c. on 50c. green and black, mint block of four, one with antique "t" in "Cents", slightly dull gum, otherwise a fine block. S.G. 67, a, Cat £366. Photo. £120-£140

468 ★ 3c. on 50c. green and black, showing dented frame, fine mint. S.G. 67b, cat £275. Photo. £100-£120

## Selangor: 1965 Issue



Ex 469



470



471

- 469 ✪ ☐ 5c. unmounted mint block of six from the right of the sheet, showing variety red (leaves, etc.) omitted on two and partially omitted on another two, fine unmounted mint. S.G. 138, c, cat £650+. Photo. £300-£350
- 470 ✪ 5c. unmounted mint, showing variety red (leaves, etc.) omitted, fine from the left of the sheet. S.G. 138c, cat £325. Photo. £100-£120
- 471 ✪ 15c. with variety green (value and leaves) omitted, fine unmounted mint from the left of the sheet. S.G. 141b, cat £475. Photo. £150-£180
- 472 A collection on leaves, incl. 1883 Straits Settlements 2c. brown overprinted "(crescent and star)/S" in red, unused, 1881-82 2c. brown type 3 unused, 1882-83 2c. brown type 9 unused, 1883-85 2c. pale rose types 15, unused, 20, 21, 1885-91 2c. pale rose types 27 (2), 28 with stop, 29, 2c. bright rose type 34 used, 1891 2c. on 24c. green types 36, 37 used, 1895-99 to \$3 used, 1900 (Oct.) 1c. on 5c. mint and used, 1c. on 50c. with dented frame mint, etc., chiefly fair to fine. (57). £700-£900

## Trengganu

### 1910-19 Issue



Ex 473



474

- 473 ★ 1c. to \$5 set with additional 1c. and 10c., mint, mainly fine. S.G. 1-17, cat £400+. Photo. £200-£220
- 474 ★ \$25 rose-carmine and green, mint, fine. S.G. 18, cat £1,000. Photo. £450-£500



## 1917-18 Red Cross Surcharges



475



478



479



485



476



Ex 477



480



481



482



483



484

- 475 ★ 3c. + 2c. carmine-red mint vertical pair, the upper stamp showing variety "SS" in "CROSS" inverted, fine. S.G. 19, b, cat £400+. Photo. £200-£220
- 476 ○ 3c. + 2c. carmine-red showing variety "SS" in "CROSS" inverted, used, slightly toned, otherwise fine. S.G. 19b, cat £475. Photo. £120-£150
- 477 ★ 3c. + 2c. carmine-red, 4c. + 2c. orange and 8c. + 2c. ultramarine all showing variety "CSOSS" for "CROSS", first and last in pairs with normal, some slight toning, otherwise fine. S.G. 19c, 20c, 22c, cat £415. Photo. £100-£120
- 478 ★ 3c. + 2c. carmine-red, mint vertical pair, with variety surcharge inverted, toned gum, otherwise fine. R.P.S. certificate (1983). S.G. 19e, cat £1,800. Photo. £700-£900
- 479 ★ 3c. + 2c. carmine-red, mint vertical pair, the upper stamp showing "RED CROSS" omitted, fine. S.G. 19, g, cat £350+. Photo. £100-£120
- 480 ★ 4c. + 2c. orange in a mint horizontal pair, the left stamp showing variety comma after "2c", the right stamp with "SS" in "CROSS" inverted, both showing portions of "2c." at top, very faintly toned, otherwise fine. S.G. 20a, b, cat £2,018+. Photo. £800-£900
- 481 ○ 4c. + 2c. orange, with variety "CSOSS" for "CROSS", used, short perf at top, otherwise fine. S.G. 20c, cat £400. Photo. £120-£140
- 482 ○ 8c. + 2c. ultramarine, with variety "SS" in "CROSS" inverted, fine used. Brandon certificate (2003). S.G. 22b, unpriced. Photo. £700-£900
- 483 ○ 8c. + 2c. ultramarine, with variety "CSOSS" for "CROSS", used, small crease, otherwise fine. S.G. 22c, cat £425. Photo. £140-£160
- 484 ○ 8c. + 2c. ultramarine, with variety "RED CROSS" twice, fine used. S.G. 22e, unpriced. Photo. £400-£500
- 485 ☆ 8c. + 2c. ultramarine, unmounted mint vertical pair showing surcharge misplaced resulting in transposed lines, fine. S.G. 22 var. Photo. £150-£200

## Trengganu: 1921-24 Issue



Ex 486



487



488

- 486 ★ **Watermark Multiple Crown** CA \$1 to \$5 and **Watermark Multiple Script** CA 1c. to \$5 with additional \$3, mainly fine mint. S.G. 23-44, cat £855. Photo. £280-£300
- 487 ★ **Watermark Multiple Script** CA 5c. deep reddish purple on bright yellow, mint with brownish gum, scarce. S.G. 32a, cat £250. Photo. £80-£100
- 488 ★ - \$25 purple and blue, fine mint, fresh appearance. S.G. 45, cat £800. Photo. £300-£350



489



490



491

- 489 S - \$50 green and yellow, overprinted "SPECIMEN", fine and fresh with gum. S.G. 46s, cat £375. Photo. £120-£150
- 490 ★ - \$50 green and yellow, fine mint, scarce. S.G. 46, cat £1,900. Photo. £800-£900
- 491 S - \$100 green and scarlet, overprinted "SPECIMEN" with gum, very small gum thin, otherwise fine and fresh appearance. S.G. 47s, cat £750. Photo. £200-£250



- 492 ★ - \$100 green and scarlet, mint, slight gum crease and disturbance (stated as "marginal thin" on B.P.A. certificate, 1999), otherwise fine and rare. S.G. 47, cat £6,000. Photo also on inside front cover. £2,000-£2,500

## 1922 Malaya-Borneo Exhibition

- 493 A mint and used collection on leaves, incl. oval last "O" in "BORNEO", small second "A" in "MALAYA" with \$3 mint, minor varieties, some faked cancellations, etc., varied condition. (90). £400-£500
- 494 ★ 2c. to \$5 set, mainly fine mint. S.G. 48-58, cat £425. Photo. £120-£150
- 495 ○ \$3 green and red on green, with variety small second "A" in "MALAYA", fine used (c.t.o.). R.P.S. certificate (1993). S.G. 57d, cat £650. Photo. £200-£250

1922 Malaya-Borneo Exhibition continued



Ex 494



495



498



497



496



500



499

- 496 ★ \$3 green and red on green, with variety raised stop after “EXHIBITION”, also short right leg to “M”, fine mint. *Very rare, only occurring once in the sheet of 120 and thus only eight examples can exist (899 examples sold).* S.G. 57c, var. Photo. £300-£350
- 497 ★ \$5 green and dull purple, with variety raised stop after “EXHIBITION”, fine mint. S.G. 58c, cat £400. Photo. £150-£200
- 498 ○ \$5 green and dull purple, with variety raised stop after “EXHIBITION”, fine used (c.t.o.). R.P.S. certificate (1993).S.G. 58c, cat £1,000. Photo. £300-£350
- 499 ★ \$5 green and dull purple, with variety small second “A” in “MALAYA” mint from the right of the sheet, pink interleaving fibres adhering to gum, fine. S.G. 58d, cat £400. Photo. £150-£200
- 500 ★ \$5 green and dull purple, with variety broken “R” and raised “IBITION”, mint, some pink interleaving fibres adhering to gum, otherwise fine. S.G. 58 var. Photo. £120-£150
- 501 A mint and used collection on leaves, incl. 1910-19 to \$1 used, \$3 and \$25 fiscally used, 1917-18 Red Cross 3c. + 2c. with variety “CSOSS” for “CROSS” used, range of minor varieties, 1922 Malaya-Borneo Exhibition to \$3 used, 1941 unissued 6c. slate grey unused, 15c. ultramarine mint, 1965 20c. bright purple omitted (2), 1937 Postage Due sets mint and used, etc., some doubtful cancellations, etc., mainly fair to fine. (115). £600-£700

## Singapore

- 502 A collection on leaves, incl. 1948-52 perf 14 and perf 17½ x 18 sets mint, 1948 Silver Wedding \$5 mint, 1955-59 4c. used with watermark inverted, 1962-66 5c. mint vertical strip of four, centre two stamps showing red almost omitted, K.G.VI Revenue \$25 and \$100 used, etc., mainly fine. (144). £450-£500



## The Edward Young Collection of Saint Lucia



- 503 ☒ 1849 (May 10) entire to London, bearing a good strike of the Crowned Circle “PAID/AT/ST. LUCIA” in red, with London tombstone alongside and “1/-” rate mark, on reverse has “ST. LUCIA” double arc dispatch datestamp. Photo. £250-£300



Ex 504



505



506

- 504 ☆ 1860 Watermark Small Star (1d.) rose-red, (4d.) blue (2) and (6d.) green (2), unused, fair to fine. S.G. 1-3. Photo. £150-£200
- 505 P 1863 Watermark Crown CC (4d.) indigo, imperforate plate proof on watermarked paper, trace of gum, slight offset, fine. Photo. £250-£300
- 506 ☆ - Prepared for use but not issued “SIX/PENCE” on (4d.) indigo, unused, small part original gum, fine. B.P.A. certificate (1979). S.G. 10, cat £1,100. Photo. £400-£500



508



509



510

- 507 ☆ 1864-76 Watermark Crown CC, Perf. 12½ (1d.) black (4, 2 with wmk. reversed), (4d.) yellow (5, one with wmk. reversed), (6d.) violet (4, one with wmk. reversed), (1s.) orange-brown (3, one with wmk. reversed, perf 14 (1d.) black (3, one with wmk. reversed), (4d.) yellow (3, one with wmk. reversed), (6d.) violet (3), (1s.) orange (3, one with wmk. reversed), unused or mint, range of shades, varied condition. (28). £600-£800
- 508 ○ 1883-86 Watermark Crown CA, Die I 2½d. ultramarine, 4d. brown and 6d. lilac (faded), all showing variety top left triangle detached, fair to fine. S.G. 33a, 34a, 35 var., (the 6d. unlisted). Photo. £600-£700
- 509 ★ - 4d. brown, showing top left triangle detached, mint, a few imperfections, otherwise fine. S.G. 34a, cat £700. Photo. £150-£180
- 510 ○ 1886-87 Watermark Crown CA, Die I 3d. dull mauve and green, with variety top left triangle detached, used, slightly toned, otherwise fine. S.G. 40a, cat £450. Photo. £100-£120

## 1886-87 Watermark Crown CA, Die I continued



511



512



513



514

- 511 ★ 6d. dull purple and blue, variety top left triangle detached, fine mint. S.G. 41a, cat £225. Photo. £100-£120
- 512 ★ 1s. dull mauve and red, variety top left triangle detached, heavily mounted, a few blunted perfs, otherwise fine. S.G. 42a, cat £950. Photo. £200-£250
- 513 ○ 1s. dull mauve and red, variety top left triangle detached, fine used. S.G. 42a, unpriced. Photo. £250-£300
- 514 ★ 1891-98 Watermark Crown CA, Die II 1/2d. dull green, with variety watermark inverted, mint, vertical crease, some adherences on gum, otherwise fine and rare. Brandon certificate (2001). S.G. 43 var, unlisted. Photo. £250-£300

## 1891-92 Surcharges



518



516



517

- 515 A mint and used collection on leaves, incl. Die I 1/2d. on 3d. mint, 1/2d. on half 6d. variety no fraction bar mint and used on piece, 1d. on 4d. with double surcharge mint and used, 1d. on 4d. variety top left triangle detached mint and used, Die II 1/2d. on 3d. with small "A" in "HALF" mint and used (4), 1/2d. on 3d. with "O" over "H" mint, etc., varied condition. (162). £700-£900
- 516 ★ "ONE/HALF/PENNY" on 3d. die I, variety small "A" in "HALF", fine and fresh mint. S.G. 53a, cat £350. Photo. £120-£150
- 517 ★ "ONE/HALF/PENNY" on 3d. die I, variety top left triangle detached, fine mint, scarce. S.G. 53c, cat £950. Photo also on back cover. £450-£500
- 518 ☒ "1/2d." on half 6d. vertical strip of three and pair, used on 1893 (Oct. 6) registered cover to London with 1891-98 1/2d. horizontal strip of three (affected by filing crease), although there seems to be a trace of another bisect at lower right but still making the correct 4d. rate, all cancelled by "ST. LUCIA/C/OC 6/93" datestamps, a few imperfections, otherwise fine and scarce. Photo. £250-£300

**Saint Lucia: 1891-92 Surcharges** continued



519



520



521



522

- 519 ★ “½d.” on half 6d. a mint horizontal pair, both with “2” in fraction omitted, slightly gum toned but scarce. S.G. 54d, cat £950+. Photo. £350-£400
- 520 ★ “½d.” on half 6d. mint horizontal pair, the left-hand stamp showing figure “1” used as fraction bar, slightly toned gum, otherwise fine. S.G. 54, g, cat £500. Photo. £180-£200
- 521 ☆ “½d.” on half 6d. heavily mounted mint horizontal pair, the left-hand stamp showing figure “1” used as fraction bar, fine. S.G. 54, g, cat £500+. Photo. £120-£150
- 522 ▲ “½d.” on half 6d. horizontal pair, the left stamp showing figure “1” used as fraction bar, fine used on small piece.. S.G. 54, g, cat £275+. Photo. £100-£120



523



524



525

- 523 ★ “ONE/PENNY” on 4d. brown, variety surcharge inverted, fine and fresh mint. Holcombe certificate (1999). S.G. 55b, cat £900. Photo also on back cover. £450-£500
- 524 ★ 田 “ONE/PENNY” on 4d. brown, mint block of four, the lower right stamp with variety top left triangle detached (unmounted), fine. S.G. 55, e, cat £216+. Photo. £100-£120
- 525 ▲ “ONE/HALF/PENNY” on 3d. die II, showing variety surcharge double with “ONE” misplaced (“O” over “H”), fine used on small piece. S.G. 56a/f. Photo. £400-£500



- 526 ★ “ONE/HALF/PENNY” on 3d. die II, variety surcharge inverted, fine mint, rare. R.P.S. certificate (2002). S.G. 56b, cat £1,900. Photo also on back cover. £800-£900

**Saint Lucia: 1891-92 Surcharges** continued



527



528

- 527 ▲ “ONE/HALF/PENNY” on 3d. die II, variety surcharge inverted, also showing small “A” in “HALF”, fine used on piece. S.G. 56b/e. Photo. £250-£300
- 528 ★ “ONE/HALF/PENNY” on 3d. die II, mint horizontal pair, the left-hand stamp with variety “ONE” misplaced (“O” over “H”), fine. S.G. 56, f, cat £270. Photo. £100-£120

**Issues from 1916**



529



530 (detail)

- 529 ★ 1916 (June) “WAR TAX” 1d. scarlet, variety type 17 overprint double, very fine and fresh mint. B.P.A. certificate (1990). S.G. 89a, cat £450. Photo. £200-£220
- 530 ▲ - 1d. scarlet, variety type 17 overprint double, fine used on piece with five other values. S.G. 89a, cat £450. Photo. £200-£250



Ex 529 (detail)

- 531 E 1937 part typed, part handwritten, eighteen page document sent by Edward Baynes (Administrator of the Colony) to Sir Selwyn Grier (Governor of St. Lucia), debating the designs, printing, colour and issue of the 1938-48 definitive series. Included are four large hand-drawn essays (on separate “CROWN AGENTS/STANDARD” paper sheets) of proposed designs for the low values, also 30 pencil sketches of suggested designs on four pages. A unique collection. Photo also on inside back cover. £1,500-£2,000



**Saint Lucia** continued



532



533

- 532 ⚙ 1949-50 12c. claret, the scarce perforation 14½ x 14, fine unmounted mint from right of sheet. S.G. 153a, cat £600. Photo. £300-£340
- 533 ○ - 12c. claret, the scarce perforation 14½ x 14, fine used. S.G. 153a, cat £450. Photo. £180-£200



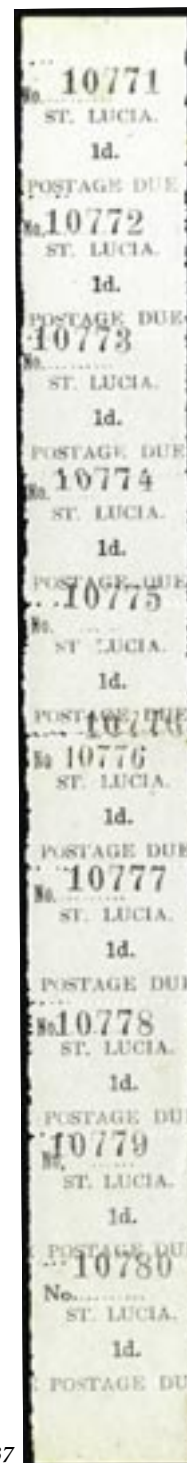
- 534 ☒ P 1967 Statehood 1c. part sheet of 82, fifteen have "STATEHOOD/1st MAR. 67" with manuscript endorsement "Proof of type for overprint of Statehood EM" some printing ink stains, but a most unusual piece. Photo. £300-£500



Ex 535



Ex 536



537

- 535 ☒ 1967 **Statehood** Air 15c. imperforate single used on f.d.c. with normal and miniature sheet, most unusual. S.G. 240 var. Photo. £150-£200
- 536 ☒ 1986 (Aug. 12) **Royal Wedding** set used on separate illustrated f.d.c.'s, each cancelled in error by "60th. BIRTHDAY H.M. QUEEN ELIZABETH/ 21 APRIL 1986" datestamps, scarce. S.G. 890-893. £150-£200

**Postage Dues**

- 537 ☆ 1930 1d. black and blue, unused vertical strip of ten (split between rows 3 and 4), showing varieties, wide, wrong fount "No.", missing stop after "ST" and two different numbers on the same stamp, mainly fine, a very rare and unusual multiple. S.G. D1, b, c, h, cat £1,186+. Photo. £350-£400



**Saint Lucia: Postage Dues continued**



539



539



541



540



542



543

- 538 ☒ 1930 1d. black on blue with variety wide, wrong fount "No.," fine used on philatelic envelope, tied by scarce "ANSE LA RAYE" c.d.s. S.G. D1b. Photo. £100-£120
- 539 ▲ - 1d. black on blue with variety no stop after "ST" also 2d. black on yellow wide fount no. also showing handstamped number "3690" double, fine used on piece. S.G. D1c, D2 var., unrecorded on this value. Photo. £350-£400
- 540 ☆ - 1d. black on blue, variety handstamped number double, fine unused. S.G. D1e, cat £750. Photo. £250-£300
- 541 ☒ - 2d. black on yellow fine used on 1933 envelope from Bermuda. S.G. D2. Photo. £100-£120
- 542 ☒ - 2d. black on yellow with variety wide, wrong fount "No.," fine used with 1d. black on blue on 1932 incoming envelope from the Turks Islands, a few minor tone spots. S.G. D1, 2b. Photo. £250-£300
- 543 ☒ - 2d. black on yellow showing variety incorrect number with correction above, fine used with 1d. black on blue on 1932 incoming envelope from Gibraltar. S.G. D1, D2g. Photo. £400-£500

## Saint Lucia: Postage Dues continued

- 544 ☛ 1949-52 16c. black error St. Edward's Crown, contained in an unmounted mint corner block of six, fine. S.G. 10ac, cat £450+. £120-£150
- 545 **1967 Statehood overprints** on 1949-52 16c., 1965 2c. and 4c., also additional 16c. (2), one with inverted, the other with double overprint, fine. £100-£120
- 546 A collection on leaves, incl. 1930 1d. unused vertical pair, one with no stop after "LUCIA", 2d. unused block of eight (4 x 2), the lower strip all with wide, wrong fount "No.", also used single, 1949-52 set and chalk surfaced paper sets used, etc., varied condition. (69). £200-£250

## Postal Fiscals



547



548



550



549

- 547 E Q.V. hand drawn essay on tracing paper for a Fiscal stamp, inscribed "ST LUCIA INLAND REVENUE/ONE PENNY", with manuscript "A rough embossed stamp-no colour". Photo. £100-£120
- 548 ☆ **1881** Type F1 surcharge "SHILLING/STAMP" with variety "SHILDING" (officially corrected), unused, a few short perfs at top, otherwise fine. B.P.A. certificate (1988). S.G. F4b, cat £700. Photo. £250-£300
- 549 ☒ - "SHILLING/STAMP", with variety "SHILDING" (officially corrected in manuscript in red), fine used on 1896 (Nov. 27) envelope registered to Barbados, rare. B.P.A. certificate (1978). S.G. F4b. Photo. £300-£400
- 550 ☆ - Type F3 surcharge "HALFPENNY/Stamp" with variety "STAMP" double, unused, small part original gum, fine. R.P.S. certificate (1980). S.G. F11a, cat £450. Photo. £120-£150
- 551 A collection on leaves, incl. 1881 "FOUR PENNY STAMP" yellow unused, One Shilling Stamp orange unused, 1882 perf 14 1d. to 6d. unused, also 6d. used on 1883 cover, and perf 12 1d. to 1s. unused, 1883 overprint 15½ mm ½d. green (used) and 1d. black (unused) both with "Revenue" double, 1884-85 1d. dull purple pair and two singles on 1866 envelope to Bordeaux, some varieties, etc., mixed condition. (118). £500-£600



## Saint Lucia: Collections

- 552 ☆ An unused or mint Q.V. selection on leaves, incl. 1863 perf 12½ (4d.) indigo, (6d.) emerald-green (, two with watermark reversed), unissued ½d. on (6d.) two singles, also pair with watermark reversed, 1882-84 perf 14 surcharged set, perf 12 4d. yellow, 1883-86 Die I ½d. with top left triangle detached, ½d. to 1s. set, 1886-87 Die I 1d. to 1s. set, 1891-98 Die II ½d. to 10s. set, etc., mixed condition. (41). **£600-£700**
- 553 ○ A used Q.V. collection on leaves, incl. 1860 Watermark Small Star (4d.) blue, (6d.) green (2), 1863 perf 12½ (1d.) lake, (4d.) indigo, (6d.) emerald green (2, one with watermark reversed), 1864-76 perf 12½ 1d. with watermark inverted and reversed, 1881 ½d. watermark reversed used (unpriced, small faults), 1882-84 surcharged set, 1883-86 Die I set, 1891-98 Die II to 5s., etc., mixed condition. (85). **£700-£900**
- 554 ☒ A selection of covers and cards, incl. 1881 1½d. stationery card to Wales showing boxed "TOO LATE", 1899 envelope from Barbados with straight line "MAIL VIA ST. LUCIA" in violet, 1933-47 Postage Due 1d. used on 1933 envelope, 1957 Western Union Telegram bearing scarce boxed "CANNOT BE TRACED", etc., fair to fine. (10 items). **£250-£300**
- 555 A K.E.VII to Q.E.II collection on leaves, incl. 1904-10 MCA ½d. to 5s. (both) sets mint and used also 3d. overprinted "SPECIMEN" with broken "M", 1912-21 ½d. to 5s. set used, also 3d. overprinted "SPECIMEN" with broken "M", 1921-30 ½d. to 5s. sets mint and used, 1967 unissued Statehood 25c. U.N.E.S.C.O. unmounted mint block of four all with overprint inverted, etc., varied condition. (approx. 371). **£600-£700**

## Notes

All philatelic items are graded and described in relation to their condition as normally found. Quotations of catalogue numbers and values are taken from Stanley Gibbons catalogues, and other catalogues named in the text, current at the time of lotting.

### Bidding increments

Bidding advances will normally proceed by the following steps:

Up to £100 by £5  
£100 to £300 by £10  
£300 to £1,000 by £20 or £30 (ie £520, £550, £580, etc.)  
£1,000 to £2,000 by £50  
£2,000 to £3,000 by £100  
£3,000 to £10,000 by £200 or £300 (ie £3,200, £3,500, £3,800, etc.)  
Over £10,000 *at auctioneer's discretion*

Bids of unusual amounts "off step" will be rounded down to the bid step below and will not take precedence over a similar bid unless received first.

# Conditions of Business

## Conditions mostly concerning Buyers

### 1 The buyer

The highest bidder shall be the buyer at the 'hammer price' and any dispute shall be settled at the auctioneer's absolute discretion. Every bidder shall be deemed to act as principal unless there is in force a written acknowledgement by Grosvenor that he acts as agent on behalf of a named principal.

### 2 Minimum increment

The bidding and advances shall be regulated by and at the absolute discretion of the auctioneer.

### 3 The premium

The buyer shall pay to Grosvenor a premium of 17.625% on the 'hammer price' inclusive of a sum in lieu of Value Added Tax at the standard rate and agrees that Grosvenor, when acting as agent for the seller, may also receive commission from the seller in accordance with Condition 15.

### 4 Value Added Tax (VAT)

Lots on which Value Added Tax at 17.5% is payable by the buyer on the 'hammer price' are indicated in the catalogue with the sign '+' Lots with an 'x' before the lot number have 5% Importation VAT charged on the hammer price because they have been imported into the UK from outside the EU. In such cases Grosvenor has used a temporary importation procedure which in effect means that the point of importation is deferred until the lot has been sold by Grosvenor. At that point the buyer is treated as the importer and is liable to pay the Import VAT due.

### 5 Payment

Immediately a lot is sold the buyer shall:

- (a) give to Grosvenor his name and address and, if so requested, proof of identity; and
- (b) pay to Grosvenor the 'total amount due' (unless credit terms have been agreed with Grosvenor before the auction).

6 Grosvenor may, at its absolute discretion, agree credit terms with the buyer before an auction under which the buyer will be entitled to take possession of lots purchased up to an agreed amount in value in advance of payment by a determined future date of the 'total amount due'.

7 Any payments by a buyer to Grosvenor may be applied by Grosvenor towards any sums owing from that buyer to Grosvenor on any account whatever without regard to any directions of the buyer or his agent, whether express or implied.

### 8 Collection of purchases

The ownership of the lot purchased shall not pass to the buyer until he has made payment in full to Grosvenor of the 'total amount due'.

9 (a) The buyer shall at his own expense take away the lot purchased not later than 5 working days after the day of the auction but (unless credit terms have been agreed in accordance with Condition 7) not before payment to Grosvenor of the 'total amount due'.

(b) The buyer shall be responsible for any removal, storage and insurance charges on any lot not taken away within 5 working days of the day of the auction.

(c) The packing and handling of purchased lots by Grosvenor staff is undertaken solely as a courtesy to clients and, in the case of fragile articles, will be undertaken only at Grosvenor's discretion.

In no event will Grosvenor be liable for damage to glass or frames, regardless of the cause.

### 10 Buyers' responsibilities for Lots purchased

The buyer will be responsible for loss or damage to lots purchased from the time of collection or the expiry of 5 working days after the day of the auction, whichever is the sooner, and neither Grosvenor nor its servants or agents shall thereafter be responsible for any loss or damage of any kind, whether caused by negligence or otherwise, while any lot is in its custody or under its control.

### 11 Remedies for non-payment or failure to collect

If any lot is not paid for in full and taken away in accordance with Conditions 6 and 10, or if there is any other breach of either of those Conditions, Grosvenor as agent of the seller shall, at its absolute discretion and without prejudice to any other rights it may have, be entitled to exercise one or more of the following rights and remedies:

- (a) to proceed against the buyer for damages for breach of contract.
- (b) to rescind the sale of that or any other lots
- (c) to re-sell the lot or cause it to be re-sold by public auction or private sale and the defaulting buyer shall pay to Grosvenor any resulting deficiency in the 'total amount due' after deduction of any part payment and addition of re-sale costs and any surplus shall belong to the seller.
- (d) to remove, store and insure the lot at the expense of the defaulting buyer and, in the case of storage, either at Grosvenor premises or elsewhere.
- (e) to charge interest at a rate not exceeding 1.5% per month on the 'total amount due' to the extent it remains unpaid for more than 5 working days after the day of the auction.
- (f) to retain that or any other lot sold to the same buyer at the sale or any other auction and release it only after payment of the 'total amount due'.
- (g) to reject or ignore any bids made by or on behalf of the defaulting buyer at any future auctions or obtaining a deposit before accepting any bids in future.
- (h) to apply any proceeds of sale then due or at any time thereafter becoming due to the defaulting buyer towards settlement of the 'total amount due' and to exercise a lien on any property of the defaulting buyer which is in Grosvenor's possession for any purpose.

### 12 Liability of Grosvenor and Sellers

- (a) Each lot is sold as:
  - (i) *Genuine* unless otherwise described in the sale catalogue.
  - (ii) *Correctly described* (see also clause 12 (f)). The date of any certificate forming part of the description of any lot will be included in the description.
- (b) A purchaser shall be at liberty to reject any lot if he:
  - (i) gives the auctioneer written notice (if possible before the sale) of intention to question the genuineness of, as the case may be, the accuracy of that description of the lot within 7 days (or in the case of an overseas purchaser to be in the auctioneer's hands within 21 days from the date of the sale) and
  - (ii) proves that the lot is not genuine or was incorrectly described; and
  - (iii) returns to the auctioneer within 30 days of the date of the sale, the lot in the same condition as it was at the time of the sale; provided that the auctioneer may, at his absolute discretion, on

receiving a request in writing from the purchaser, extend for a reasonable period of time the return of the lot, to enable it to be submitted to an agreed expert or expert committee.

nb: The onus of proving a lot not to be genuine, or incorrectly described, is on the purchaser. The inability of a recognised expert or expert committee to express a definite opinion shall serve to discharge the onus on the purchaser and shall be a ground for rejecting the lot concerned.

(c) Where a lot has been submitted for an expert opinion, all costs for such an option shall be paid for by the person who retains the item or items to which the opinion relates.

(d) Where the purchaser of a lot discharges the onus and acts in accordance with sub clause (b) of this clause, the auctioneer shall rescind the sale and repay to the purchaser the purchase money paid by him in respect of the lot.

(e) No lot shall be rejected if, subsequent to the sale, it has been immersed in water, marked by an expert or expert committee, or treated by any other process, unless the auctioneer's permission to subject the lot to such a process has first been obtained in writing.

nb: Many Continental experts now mark forged stamps; therefore it is essential for permission to be obtained from the auctioneers *before* submitting to these experts.

(f) Any lots listed under 'Collections and Various' or stated to comprise or contain a collection, issues or stamps, which are undescribed, shall be put up for sale, not subject to rejection, and shall be taken by the purchaser with all (if any) faults, lack of genuineness, and errors of description, and numbers of stamps within the lot, and the purchaser shall have no right to reject the lot; except that, notwithstanding the foregoing provisions of this sub clause, where before the sale a person intending to bid at the sale gives notice in writing to, and satisfies the auctioneer, that any such lot contains any item or items *not* described in the sale catalogue, and that person specifically describes such in that notice, then that item or items shall, as between the auctioneer and that person, be taken to form part of the description of the lot for purposes of sub clauses (a), (b) and (d) of this clause.

(g) No lot illustrated in the catalogue shall be rejected on the grounds of cancellation, centring, margins, perforation or other characteristics apparent from the illustration. Catalogue illustrations are not guaranteed for tone or colour and no lot shall be rejected on the ground of inaccurate reproduction. Imperfections on covers shall not constitute grounds for return unless of an exceptional nature.

**13** Grosvenor sells as agent for the seller (except where it is stated wholly or partly to own any lot as principal) and as such is not responsible for any default by seller or buyer.

**14** Any representation or statement by Grosvenor, in any catalogue as to authorship, attribution, genuineness, origin, date, age, provenance, condition or estimated selling price is a statement of opinion only. Every person interested should exercise and rely on his own judgment as to such matters and neither Grosvenor nor its servants or agents are responsible for the correctness of such opinions.

**15** Whilst the interests of prospective buyers are best served by attendance at the auction, Grosvenor will, if so instructed, execute bids on their behalf, neither Grosvenor nor its servants or agents being responsible for any neglect or default in doing so or for failing to do so.

**16** Grosvenor shall have the right, at its discretion, to refuse admission to its premises or attendance at its auctions by any person.

**17** Grosvenor has absolute discretion without giving any reason to refuse any bid, to divide any lot, to combine any two or more lots, to withdraw any lot from the auction and in case of dispute to put up any lot for auction again.

**18** (a) Any indemnity under these Conditions shall extend to all actions, proceedings costs, expenses, claims and demands whatever incurred or suffered by the person entitled to the benefit of the indemnity.

(b) Grosvenor declares itself to be a trustee for its relevant servants and agents of the benefit of every indemnity under these Conditions to the extent that such indemnity is expressed to be for the benefit of its servants and agents.

**19** Any notice by Grosvenor to a seller, consignor, prospective bidder or buyer may be given by first class mail or airmail and if so given shall be deemed to have been duly received by the addressee 48 hours after posting.

**20** These Conditions shall be governed by and construed in accordance with English law. All transactions to which these Conditions apply and all matters connected therewith shall also be governed by English law. Grosvenor hereby submits to the exclusive jurisdiction of the English courts and all other parties concerned hereby submit to the non-exclusive jurisdiction of the English courts.

## General conditions and definitions

**1** In these Conditions:

(a) 'catalogue' includes any advertisement, brochure, estimate, price list and other publication.

(b) 'hammer price' means the price at which a lot is knocked down by the auctioneer to the buyer.

(c) 'total amount due' means the 'hammer price' in respect of the lot sold together with any premium, Value Added Tax chargeable and additional charges and expenses due from a defaulting buyer in pounds sterling;

(d) 'deliberate forgery' means an imitation made with the intention of deceiving as to authorship, origin, date, age, period, culture or source which is not shown to be such in the description in the catalogue and which at the date of the sale had a value materially less than it would have had if it had been in accordance with that description.

(e) 'sale proceeds' means the net amount due to the seller being the 'hammer price' of the lot sold less commission at the 'stated rates' and 'expenses' and any other amounts due to Grosvenor by the seller in whatever capacity and howsoever rising.

(f) 'stated rate' means Grosvenor published rates of commission for the time being and a sum in lieu of Value Added Tax thereon.

(g) 'expenses' in relation to the sale of any lot means Grosvenor charges and expenses for insurance, illustrations, special advertising, packing and freight of that lot and any Value Added Tax thereon.

(h) 'bought-in price' means 5 per cent more than the highest bid received below the reserve.

## 2 Vendors' Commission on Sales

A commission of 15% is payable by the vendor on the hammer price on lots sold, unless otherwise agreed.

## 3 VAT

Commission, illustrations, insurance and advertising are subject to VAT at the standard rate where appropriate.