

B.W.I.S.C. LIBRARY

Title

Catalogue Reference :

Sect	Part	No.	Sub	Loc'n
9	4	22	7	



The "William Glossop"
SPECIALISED COLLECTION

NOVEMBER 14th, 15th, 1955

H. R. HARMER LTD., LONDON

CONDITIONS OF SALE.

Every lot offered at this auction is offered subject to the Philatelic Auctioneers' Standard Terms and Conditions of Sale which are as follows :—

1.—The highest bidder for each lot shall be the purchaser thereof. If any dispute arises as to the highest bidder the Auctioneer shall determine the dispute and may put up again and re-sell the lot in respect of which the dispute arises.

2.—(a) The bidding and advances shall be regulated by and at the discretion of the Auctioneer, and he shall have the right to refuse a bid.

(b) The purchaser of each lot shall at the sale if required (i) give his or her name and address to the Auctioneer, and/or (ii) pay into the hands of the Auctioneer at his discretion either the whole or part of the purchase money. If any purchaser fails to comply with the foregoing conditions the Auctioneer may put up again and re-sell any lot in respect of which such failure is made; if upon such re-sale a lower price is obtained for such lot than was obtained on the first sale the difference in price shall be made good by (and a debt due from) the purchaser in default upon the first sale.

(c) Where an agent purchases on behalf of an undisclosed client such agent shall be personally liable for payment of the purchase price to the Auctioneer and for safe delivery of the lot to the said client.

3.—(a) The Auctioneer reserves the right to bid on behalf of Clients and Vendors, but shall not be liable for errors or omissions in executing instructions to bid.

(b) The Auctioneer reserves the right before or during a sale to group together lots belonging to the same Vendor, or to split up and/or to withdraw any lot or lots.

4.—Each lot shall be at the purchaser's risk from the fall of the hammer and must be paid for in full before delivery and must be taken away at his or her expense by a purchaser in the United Kingdom within seven days of the date of sale and by a purchaser overseas within a reasonable time. If any purchaser fails to pay in full for any lot within the said time such lot may at the Auctioneer's discretion, be put up for Auction again or sold privately; if upon such re-sale a lower price is obtained for such lot than was obtained on the first sale the difference in price and the expense of such re-sale shall be made good by (and a debt due from) the purchaser in default upon the first sale.

5.—The Auctioneer shall not be liable for any default of the Purchaser or Vendor.

6.—(a) Unless otherwise indicated each lot is sold as genuine and properly described.

(b) If after the sale the purchaser of a lot shall prove it to be not genuine or wrongly described the purchaser shall be at liberty to reject the lot provided he or she—(i) being within the United Kingdom within seven days or being overseas within a reasonable time of the date of the sale give notice in writing to the Auctioneer of intention to question as the case may be the genuineness or description of the lot, AND (ii) within thirty days of the date of the sale (or, in exceptional cases, such longer time as may in the Auctioneer's discretion be allowed for expertising) returns such lot to the Auctioneer. NOTE: The onus of proving a lot to be not genuine or wrongly described lies with the purchaser. Proof of the inability of an Expert Committee to express a definite opinion will not discharge such onus.

(c) No lot may be rejected if subsequent to the sale it has been immersed in water or treated by any other process unless the Auctioneer's permission to subject the lot to such immersion or treatment has first been obtained.

(d) Lots stated to contain collections and/or undescribed stamps must be taken with all faults and errors as to numbers (if any), and by reason of the foregoing a purchaser of any such lot shall have no right to reject the same.

SYMBOLS USED IN THIS CATALOGUE

☆ unused. O used. Δ used on piece. ☒ used on letter, envelope, card, etc.
⊞ block of four. ⊞ block larger than four.
E Essay. P Proofs. S Specimen.

part o.g. unused with part original gum.

o.g. unused with full original gum slightly disturbed, or alternatively having a previous mount.

mint unused with original gum in Post Office state and mounted with a peelable hinge.

unmounted mint as mint but unmounted.

The number of stamps or pieces in the Lot is given in brackets at the end of the description or shown in brackets at the end. They are listed according to Stanley Gibbons' 1956 Part I Catalogue and Supplements.

Estimated Value

The quotations in the right-hand column in this Catalogue are from Stanley Gibbons' 1956 Part I Catalogue and supplements, unless preceded by the letter "E", when they indicate our estimate of the approximate market value.

VIEWING TIMES FOR THIS SALE

Lots may be viewed on Thursday and Friday, preceding days of Sale between 10 a.m. and 4 p.m.; Saturday 10 a.m. and 12 noon, and on days of Sale, 10 a.m. and 1 p.m.

SALES
2583-2584

Catalogue

AT
1.30 P.M.

WITH NINE PHOTO-PLATES

of

THE MAJOR PORTION

of

THE EXCEPTIONAL COLLECTION

of

ST. VINCENT

offered by order of

*William Glossop, Esq., F.R.P.S.L.,
of Sheffield*

To be sold by Auction on

Monday and Tuesday

NOVEMBER 14th and 15th, 1955

at 1.30 p.m. each day

by

H. R. Harmer Ltd.

International Stamp Auctioneers

41, NEW BOND STREET, LONDON, W.1.

Telegrams: "Phistamsel, Wesdo, London."

Telephone: MAYfair 0218

H. R. Harmer, C. H. C. Harmer, T. J. Edwards, Auctioneers.

Price—Two Shillings

The "William Glossop" Collection
of
ST. VINCENT

DISCUSSION, particularly amongst the not-so-young Specialists frequently turns to such speculations as "what happened to the block of four from the "X" Collection?"

Occasionally, after an unusually long lapse of time, some of the questions answer themselves when a really outstanding old-time Collection comes up at Auction.

In the remarkable St. Vincent Collection to which this Catalogue is devoted we are pleased to be able to bring to light an exceptional array of proofs, rarities, blocks and covers largely unknown to the Philatelic World.

The very solid basis of the Collection was formed by Mr. Abraham Oxley, of Dewsbury, a member of the Leeds and Manchester Philatelic Societies, before World War I.

He was particularly fortunate in being able to purchase in 1913 the exceptional accumulation of Proofs from the Earl of Crawford's Collection, and many more rare items from the "Castle" Collection which was dispersed about the same time.

Mr. Oxley collaborated very closely with his brother-in-law, Mr. William Glossop of Sheffield, up to the time of his death in 1935, after which Mr. Glossop acted as Curator, finally becoming sole owner in 1942. The "Oxley" and "Glossop" Collections were then amalgamated and the resulting array of high-quality attractive lots is now available to the World of Philately.

FIRST DAY OF SALE: MONDAY, NOVEMBER 14th, 1955

AT ONE-THIRTY P.M. PRECISELY.

The quotations in the right-hand column in this Catalogue are from Stanley Gibbons' 1956, Part I, Catalogue and Supplements, unless preceded by the letter "E", when they indicate our estimate of the approximate market value.

ST. VINCENT

Lot No.		Est. Value
1 ☒	1858 Pre-stamp envelope to England, showing a fine impression of the crowned circle "PAID AT ST. VINCENT" strike in red, pmkd. "ST. VINCENT AP. 10 1858" and "LONDON 4 MY. 1858" (see photo-plate II) (1)	E £10 to £15
2 △	Great Britain, 1857 1d. rose-red, horizontal pair, and 4d. rose, all used together on piece, pmkd. "A 10", Kingstown, St. Vincent (see photo-plate III). . . (3)	E £10
3 ○	— ditto 1d. rose-red, 4d. rose, and 1856 6d. lilac, all pmkd. "A 10" Kingstown, St. Vincent, last two wing margin copies (3)	E £10
4 ○	— ditto 4d. rose, and 1856 6d. lilac, fine copies, clearly pmkd. "A 10" . . . (2)	E £7
PERKINS BACON DIE AND PLATE PROOFS		
5 P	Die Proof of the ½d. in black on card, very fine and rare (see photo-plate II) . . . (1)	E £30
6 P	Die Proof of the 6d. in black on India paper, mounted on card, very fine (see photo-plate II) (1)	E £30
7 P	Die proof of the 5/- in black on card, very fine (see photo-plate II) (1)	E £40
8 P ☒	Plate Proof of the ½d. in black on wove paper, a block of four (see photo-plate II) (4)	E £8 to £12
9 P ☒	The same in a complete sheet of sixty with margins. A rare piece (60)	E £120 to £180
10 P	Plate Proof of the 1d. in black on wove paper, a very fine vertical pair (see photo-plate II) (2)	E £4 to £6
11 P ☒	The same in a block of four, one stamp slightly cut-into (4)	E £7 to £10
12 P ☒	The same in a right-hand half sheet of thirty with full margins (30)	E £60 to £90
13 P	Plate Proofs of the 1d., 4d., 6d. and 1/- in black, on wove paper (4)	E £12
14 P	Plate Proof of the 4d. in black on wove paper, a very fine horizontal pair (see photo-plate II) (2)	E £4 to £6
15 P ☒	The same in a right-hand half sheet in a block of fifteen with margins . . . (15)	E £30 to £45
16 P	Plate Proof of the 6d. in black on wove paper, a horizontal pair (see photo-plate II) (2)	E £6
17 P	Plate Proof of the 1/- in black on wove paper, a very fine horizontal pair from upper left corner of sheet (see photo-plate II) (2)	E £4 to £6
18 P ☒	The same in a block of eighteen and another of six, forming a part sheet of twenty-four (two left vertical rows missing) with margins (24)	E £48 to £70

DE LA RUE PROOFS PRINTED FROM PERKINS BACON PLATES

<i>Lot No.</i>	<i>Cat. or Est. Value</i>
19 P [Ⓟ] Plate Proof of the 1d. in black on wove paper, a part sheet of fifty-seven (bottom-left horizontal strip of three missing) with margins and dated "26 May 82" upper-right corner, very rare (57)	E £100 to £170
20 P [Ⓟ] Plate Proof of the 1d. in black on wove paper, a complete sheet of sixty with margins, guide lines, and dated "26 May 82" upper-right corner (60)	E £120 to £180
21 P [Ⓟ] Plate Proof of the 4d. in black on wove paper, a complete sheet of thirty with margins, guide lines and dated "26 May 82" upper-right corner (30)	E £60 to £90
22 P [Ⓟ] Plate Proof of the 6d. in black on wove paper, a complete sheet of sixty with margins, guide lines and dated "26 May 82" upper-right corner (60)	E £120 to £180
23 P [Ⓟ] Plate Proof of the 1/- in black on wove paper, a complete sheet of thirty with margins, guide lines and dated "26 May 82" (30)	E £60 to £90
24 P [Ⓟ] Plate Proof of the 5/- in black on wove paper, a complete sheet of twenty with margins, and dated "26 May 82" upper-right corner. Unique (see photo-plate IV) (20)	E £100 to £200

ISSUED STAMPS

1861, INTERMEDIATE PERF. 14-16

25 ☆ THE RARE 6d. DEEP YELLOW-GREEN, S.G. 2, A BRIGHT UNUSED COPY, SLIGHTLY OFF CENTRE (see photo-plate I) (1)	£140
26 ○ Two fine lightly pmkd. copies (2)	£8 10s.
27 ○ Three fine used copies (3)	£12 15s.
28 ○ A similar lot (3)	£12 15s.

1862 ROUGH PERF. 14-16

29 ☆田 1d. ROSE-RED, S.G. 3, a very fine part o.g. block of four (4)	£9+
30 ☆ 1d. rose-red, a part o.g. horizontal strip of four, slightly stained (4)	£9+
31 ○ The same in a lightly cancelled horizontal strip of four (4)	£5 10s.+
32 ○ Another horizontal strip of four (4)	£5 10s.+
33 △ The same in a horizontal strip of four (one stamp creased) used on dated piece, showing "PD" in oval in red at side of stamps (4)	£5 10s.+
34 ○ The same in a lightly pmkd. horizontal strip of five, fine appearance but thinned (5)	£6 17s.+
35 ☆B 1d. rose-red, a well centred part o.g. block of six (3 x 2) has slight stain (6)	£13 10s.+
36 ☆B The same in a very fine well centred o.g. block of twelve (3 x 4) (12)	£15 5s.+
37 田 1d. rose-red, and 6d. deep green, very fine used on wrapper to Paris, showing full dispatching and receiving cancellations of 1866 (3)	E £10
38 ☆ 1d. rose-red (3) and 6d. deep green, all o.g. or part o.g. (4)	E £4
39 ○ 1d. rose-red (2), and 6d. deep green (2 shades), all lightly pmkd. and very fine (4)	£5 15s.
40 ○ 1d. rose-red, and 6d. deep green, three lightly cancelled copies of each (6)	£8 12s.
41 ○ A similar lot (6)	£8 12s.
42 ☆ 1d. rose-red, a horizontal part o.g. strip of three, variety imperf. vertically, S.G. 3a, right-hand stamp a little creased otherwise fine (see photo-plate III) (3)	E £20
43 ☆ 6d. DEEP GREEN, S.G. 4, o.g. perfectly centred and superb (1)	£3 2s.
44 ☆ Another copy, part o.g., has faint crease (1)	£3 2s.

Lot No.	1862 ROUGH PERF. 14-16 (continued)	Cat. or Est. Value
45 ○	6d. deep green, six lightly cancelled copies (6)	£9
46 ☒	6d. deep green, a horizontal pair used on blue envelope to London, dated 1864 (2)	E £12
47 ☒	Another horizontal pair used on letter to London, pmkd. "SAINT VINCENT JU 24. 66." and "LONDON 13 JY. 66", right-hand stamp has crease (2)	E £10
48 ○	6d. deep green, two very fine horizontal pairs, each with one light "A 10", cancellation (4)	£6+
49 ☆	6d. deep green, a very fine horizontal strip of three and a horizontal pair, both pieces part o.g. (5)	£15 12s.+
50 ☆	A similar lot (5)	£15 12s.+
51 ☆田	6d. deep green, an o.g. well centred block of four, but slightly stained (4)	£12+
52 ☆	6d. deep green, a very fine part o.g. horizontal strip of five (5)	£15 12s.+
53 ☆回	An exceedingly fine well centred o.g. block of six (3 x 2) (6)	£18 15s.+
54 ☆回	The same in a beautiful well centred o.g. block of twelve (4 x 3) (see photo-plate VIII) (12)	£37 10s.+

1863-66, PERF. 11-12½.

55 P回	Proof perf. 11-12½ of the 1d. in milky blue on thick unwmkd. paper, a block of six, damaged but rare (see photo-plate II) (6)	E £30
56 ○	1d. ROSE-RED, S.G. 5, lightly pmkd. "ST. VINCENT AP 24. 63." very early date and scarce (1)	E £3
57 ☆	1d. rose-red, four very fine copies, all o.g. or part o.g. (4)	£7 10s.
58 ☆	1d. rose-red and 6d. deep green, S.G. 5, 6, both part o.g. and fine (2)	£13 17s.
59 ☆	1d. rose-red, a part o.g. well centred horizontal pair from bottom of sheet with full margins, showing guide lines and variety imperf. between stamp and sheet margin (see photo-plate VIII) (2)	E £10
60 ☆	1d. rose-red, an o.g. well centred horizontal strip of three, extremely fine (3)	£5 12s.+
61 ☆田	1d. rose-red, a part o.g. very well centred, block of four (4)	£7 10s.+
62 ☆田	Another part o.g. block of four from lower left corner of sheet with full margins (4)	£7 10s.+
63 ☆田	Another part o.g. block of four from bottom of sheet, with double perforations horizontally through centre of block (4)	E £7
64 ○	1d. rose-red, a well centred used horizontal strip of five, second stamp from right has blue crayon mark (5)	£6 17s.+
65 ☆回	1d. rose-red, a very fine part o.g. block of six (3 x 2) (6)	£11 5s.+
66 ☆回	A very fine o.g. block of ten (5 x 2) (10)	£18 15s.+
67 ☆回	1d. rose-red, an o.g. block of thirty, the three lower rows of sheet with margins showing guide lines, one vertical strip has faint crease, centring fair to very fine (30)	£56 5s.+
68 ☆	6d. DEEP GREEN, S.G. 6, part o.g. perfectly centred and superb (see photo-plate III) (1)	£12
69 ☆	A similar copy (1)	£12
70 ☆	Another part o.g. copy, not quite so fine (1)	£12
71 ○	6d. deep green, fine used (1)	£4 5s.
72 ○	Another, well centred and lightly cancelled, very fine. (1)	£4 5s.
73 ☆	6d. deep green, a part o.g. horizontal pair, a little off centre (2)	£24+
74 ☆田	6d. deep green, a very fine o.g. block of four (see photo-plate III) (4)	£48+
75 ☆	6d. deep green, an o.g. horizontal strip of five, a little off centre (see photo-plate III) (5)	£60+

Lot No.	1863-66. VARIETY IMPERF.	Cat. or Est. Value
76 ○	1d. ROSE-RED, a superb copy with rare "CANCELLED" obliteration. Only six copies exist (see photo-plate I) (1)	E £20 to £30
77 ☆	1d. ROSE-RED, S.G. 7a, a brilliant and superb unused horizontal pair (2)	£10
78 ☆	1d. rose-red, a part o.g. horizontal pair with full sheet margin at right (2)	£10
79 ☆田	1d. rose-red, a very fine unused block of four from right of sheet (4)	£20+
80 ☆田	Another very fine unused block of four from top of sheet (4)	£20+
81 ☆田	Another unused block of four from upper-left corner of sheet, very fine (4)	£20+
82 ☆田	The same in a very fine unused block of six from lower-right corner of sheet (6)	£30+
83 ☆田	The same in an unused block of eight (4 x 2), from upper-right corner of sheet, small clear margin at right, large other sides (8)	£40+
84 ☆田	The same in an extremely fine o.g. block of eighteen from upper-right corner of sheet with margins, and showing guide lines. A rare piece (see photo-plate II) (18)	£90+
85 ○	6d. DEEP GREEN, rare "CANCELLED" obliteration, touched at top right, otherwise fine. Only six copies exist (see photo-plate III) (1)	E £20
86 ☆	6d. DEEP GREEN, S.G. 7b, a part o.g. horizontal pair from left of sheet, large margins but slightly creased (see photo-plate III) (2)	£35
87 ☆	6d. deep green, a very fine unused horizontal strip of three from left of sheet with large margins (see photo-plate III) (3)	E £25
88 ☆田	6d. DEEP GREEN, A REMARKABLE UNUSED BLOCK OF EIGHT (4 x 2) FROM UPPER-RIGHT CORNER OF SHEET WITH LARGE MARGINS, SLIGHTLY CREASED. RARE IN SO LARGE A PIECE (see photo-plate V) (8)	£146
1866 PERF. 11-12½		
89 ☆	4d. DEEP BLUE, S.G. 8, part o.g. and very fine (see photo-plate III) (1)	£16
90 ☆	Another part o.g. well centred copy (1)	£16
91 ☆	Another part o.g. copy, very fine (1)	£16
92 ○	4d. deep blue, pmkd. "A 10" in red and in black, well centred and fine (1)	£4 10s.
93 ○	4d. deep blue, two copies, both pmkd. "A10", one in brown, other in black, slightly thinned (2)	£9
94 ☆	4d. deep blue, a part o.g. horizontal pair, centred to top (see photo-plate III) (2)	£32+
95 ☆	Another part o.g. horizontal pair, showing double perforation at bottom, fine (see photo-plate III) (2)	£32+
96 ○田	4d. deep blue, a rare used block of four, with sheet margin at bottom showing guide lines (see photo-plate II) (4)	E £40 to £50
97 ☆田	4d. DEEP BLUE, AN O.G. BLOCK OF NINE (3 X 3) FROM TOP OF SHEET, BOTTOM RIGHT-HAND PAIR PEN-CANCELLED AND THE PIECE IS OFF CENTRE, BUT VERY RARE (see photo-plate V) (9)	£144+
98 ☆	1/- SLATE-GREY, S.G. 9, part o.g. and from bottom of sheet, a little creased and off centre, but very rare (see photo-plate III) (1)	£75
99 ☆	Another part o.g. copy, fine but for tiny rust mark at top (see photo-plate I) (1)	£75

Lot No.	1866 PERF. 14-16	Cat. or Est. Value
100 ☆	1/- SLATE-GREY, S.G. 10, part o.g. well centred and superb (see photo-plate III) (1)	£22
101 ☆	Another beautiful part o.g. copy (see photo-plate III) (1)	£22
102 ☆	Another part o.g. and superb (see photo-plate III) (1)	£22
103 ☆	Another part o.g. copy in similar condition (see photo-plate III) (1)	£22
104 ☆	Another, part o.g., not quite so fine (1)	£22
105 ○	1/- slate-grey, lightly pmkd. "A 10", in brownish red, well centred and very fine (1)	£4 15s.
106 ○	Another copy, lightly pmkd., well centred and superb but for thin spot . . (1)	£4 15s.
107 ○	Another well centred used copy, but has tiny thin spot (1)	£4 15s.
108 ☆	1/- slate-grey, an extremely fine part o.g. horizontal pair (see photo-plate III) . (2)	£44+

1866 PERF. 11-12½ x 14-16

109 ☆	1/- SLATE-GREY, S.G. 11, a beautiful part o.g. copy (see photo-plate III) . . (1)	£18
110 ☆	Another copy, well centred and exceedingly fine (see photo-plate III) (1)	£18
111 ☆	Another part o.g., full deep colour and extremely fine (see photo-plate III) . . (1)	£18
112 ☆	Another, part o.g. and fine (1)	£18
113 ○	1/- slate-grey, well centred lightly cancelled and superb but for thin spot . . (1)	£4
114 ○	Another copy in similar condition (1)	£4
115 ○	Two used copies, both have thin spots, otherwise very fine (2)	£8
116 ☆ 田	1/- slate-grey, a part o.g. block of four from bottom of sheet, brilliant but a little off centre and a few perfs. split (see photo-plate V) (4)	£72+

1868 PERF. 11-12½

117 ☆	4d. YELLOW, S.G. 12, brilliant part o.g. and very fine (see photo-plate III) . (1)	£14
118 ☆	Another very fine part o.g. copy (1)	£14
119 ☆	Another, part o.g., almost equally fine (1)	£14
120 ☆	Another, part o.g. centred slightly to right (1)	£14
121 ○	4d. yellow, very fine used, light red circular "ST. VINCENT" dated cancellation (1)	£5
122 ○	Another copy, pmkd. "CA" (Calliaqua) in red, dated "SP.10.74", centred to bottom right (see photo-plate III) (1)	£15
123 ○	Another copy pmkd. "CA" in red, dated "AP. 9. 77." (see photo-plate VI) . (1)	£15
124 ○	Another fine copy pmkd. "RAB" (Rabacca) in red and dated "MY. 27. 74." has faint crease (see photo-plate VI) (1)	£10
125 ○	Another copy pmkd. "RAB" in red, dated "7. AU. 75" well centred and superb (see photo-plate VI) (1)	£15
126 ☆	4d. yellow, a magnificent perfectly centred part o.g. horizontal pair from lower-right corner of sheet with full margins (see photo-plate VI) (2)	£28+
127 ○	4d. yellow, a horizontal pair with "A 10" pmk. in black, fine (2)	£10+
128 ☆ 田	4d. yellow, a part o.g. block of four, has slight crease and 2mm. ink strokes on perfs. of lower-left stamp (see photo-plate V) (4)	£56+

Lot No.	1868 PERF. 11-12½ (continued)	Cat. or Est. Value
129 ☆	1/- INDIGO, S.G. 13, a glorious o.g. copy from upper-right corner of sheet (see photo-plate VI) (1)	£22
130 ☆	Another o.g. copy, perfectly centred and superb but for slight gum crease (see photo-plate I) (1)	£22
131 ☆	Another, o.g. but slightly off centre (1)	£22
132 ☆	Another part o.g. copy, centred slightly to top-left (1)	£22
133 ☆	Another part o.g. copy, centred slightly to top (1)	£22
134 ○	1/- indigo, well centred and lightly pmkd. "A 10" in black very fine (1)	£5
135 ○	Another copy, with brownish black "A 10" cancellation, fine (1)	£5
136 ○	Another used, very fine but for slight thinning (1)	£5
137 ☆	1/- indigo, a part o.g. horizontal pair, a little off centre (see photo-plate VI) (2)	£44+
138 △	1/- indigo, a fine horizontal strip of three used on piece (see photo-plate VI) (3)	£15+
139 ☆田	1/- indigo, a well centred o.g. block of four with sheet margin at right, top-left stamp has tiny ink mark (see photo-plate V) (4)	£88+
140 ☆	1/- BROWN, S.G. 14, part o.g., well centred, brilliant and superb (see photo-plate VI) (1)	£28
141 ☆	Another copy part o.g., has very slight stain (1)	£28
142 ☆	A brilliant o.g. copy with sheet margin at bottom, showing horizontal guide line, very fine (see photo-plate VI) (1)	£28
143 ○	1/- brown, used, has minute stain, otherwise very fine (1)	£10
144 ○	A similar used copy (1)	£10
145 ☆	1/- brown, a brilliant and very fine part o.g. horizontal strip of three with sheet margin at bottom (see photo-plate VI) (3)	£84+
146 ☆田	1/- brown, an o.g. block of four of bright colour and well centred, has tiny rust spot and slightly creased, but of handsome appearance (see photo-plate V) (4)	£112+

1871 ROUGH PERF. 14-16

147 ○	1d. BLACK, S.G. 15, pmkd. "BAR" (Barrouallie) in red superimposed "A 10" in black, slightly thinned and off centre but scarce (1)	E £5
148 ○	Another copy, cancelled "ST" (Stubbs) in red, dated "JY 19 75" slightly stained on reverse (1)	E £7
149 ☆	1d. black, three very fine o.g. or part o.g. copies (3)	£4 10s.
150 ☆	1d. black, fourteen copies, all o.g. or unused, fair to very fine, but some have faults (14)	£21
151 ○	1d. black, a horizontal pair and fourteen single copies, all cancelled in red, one "CA" (Calliaqua), fair to very fine (16)	£20
152 ○	1d. black, two horizontal pairs, and ten single copies, all pmkd. in black, some with "GB/40c" (14)	£17 10s.
153 ☆	6d. BLUE-GREEN, S.G. 16, brilliant part o.g., centred slightly to right (see photo-plate VI) (1)	£20
154 ☆	Another part o.g. copy, centred slightly to left (see photo-plate VI) (1)	£20
155 ○	6d. blue-green, pmkd. "RAB" (Rabacca) in red, has few small ink spots otherwise fine (see photo-plate VI) (1)	E £7
156 ○	Another copy with similar cancellation, fine (see photo-plate VI) (1)	E £10

Lot No.	1871 ROUGH PERF. 14-16 (continued)	Cat. or Est. Value
157 ○	6d. blue-green, three copies, all lightly pmkd., one has thin spot, others very fine (3)	£12
158 ○	A similar lot (3)	£12
159 ○	Two horizontal pairs of slightly different shades, one with red pmk., other black (4)	£16
160 ○	6d. blue-green, a horizontal strip of three with light black "A 10" cancellation, left-hand stamp has few perfs. clipped, right-hand copy slight crease . . (3)	£12
161 ○ ㊦	6d. BLUE-GREEN, A MAGNIFICENT WELL CENTRED BLOCK OF EIGHTEEN (THREE RIGHT-HAND VERTICAL ROWS OF SHEET WITH MARGIN) CANCELLED "A 10" IN BLACK. AN EXCEPTIONAL AND VERY RARE PIECE (see photo-plate VIII) (18)	E £150

1872

162 P	Imperf. proof of the 1/- in rose-red on wove paper, a superb horizontal pair (see photo-plate VI) (2)	E £15 to £20
163 P	The same in a vertical pair from lower-left corner of sheet (2)	E £15 to £20

1872 PERF. 11-12½

164 ☆	1/- DEEP ROSE RED, S.G. 17, part o.g. and fine (see photo-plate VI) (1)	£60
165 ☆	Another copy unused, not so fine (see photo-plate VI) (1)	£60
166 ㊦	1/- deep rose-red, an extremely fine copy, used on neat envelope to England "ST. VINCENT OC 25. 72" and "LONDON" receiving pmks. on reverse (see photo-plate VI) (1)	E £15
167 ㊦	Another fine copy used on neat envelope to London (see photo-plate VI) (1)	E £15
168 ○	Another copy, well centred. lightly pmkd. and very fine (1)	£8
169 ○	Another, centred slightly to top, and a little stained (1)	£8
170 ○	Another copy, fine used (1)	£8
171 ○	Another copy, pmkd. "CA" (Calliaqua) in red, dated "NO.10.73" and superimposed "A 10" in black, centred slightly to right (see photo-plate VI) (1)	E £10
172 ○	1/- deep rose-red, two fine used copies (2)	£16

1872-73 PERF. ABOUT 15

173 ☆	1d. BLACK, S.G. 17b, two well centred shades, one with large part o.g., other unused (2)	£6
174 ☆ ㊦	1d. black, an o.g. block of four, a little off centre but scarce (4)	£12+
175 ☆ ㊦	The same in an o.g. block of six, (3 x 2), from lower-left corner of sheet, off centre horizontally (see photo-plate VIII) (6)	£18+
176 ㊦	1d. black, used on local envelope, showing "RAB" (Rabacca), cancellation in red, dated "MY. 2. 77." and "K (Kingstown) MY. 2. 77.". The envelope is torn at top (1)	E £10
177 ○	1d. black, four copies with abbreviated town pmks. in red, comprising "CA", "CH", "CO", and "RAB", two slightly thinned (4)	E £6
178 ○	1d. black, a horizontal strip of three and seventeen single copies, all used, various cancellations, condition fair to fine (20)	£30
179 ☆	6d. BLUE-GREEN, S.G. 17c., unused, well centred for this stamp (see photo-plate VI) (1)	£24
180 ☆	Another unused copy in similar condition (see photo-plate VI) (1)	£24
181 ☆	Another, part o.g. but centred to right and a trifle stained (1)	£24
182 ☆	The same in an unused horizontal pair, centred to right and slightly stained (see photo-plate VI) (2)	£48+
183 ○	6d. blue-green, shades, six used copies, mostly very fine but one has thinning (6)	£19 10s.

Lot No.	1873-74, PERF. 11-12½ x 15	Cat. or Est. Value
184 ☆	1d. BLACK, S.G. 18, three copies, part o.g., all very fine and well centred . . . (3)	£7 10s.
185 ☆	The same in a part o.g. horizontal pair, right-hand stamp has faint crease . . . (2)	£5 +
186 ☆ 田	The same in a part o.g. block of four with sheet margin at bottom, a little off centre (4)	£10 +
187 ○	1d. black, fourteen used copies, various cancellations in black or red, fair to fine (14)	£17 10s.
188 ☆	1/- LILAC-ROSE, S.G. 19, a fine unused copy of this rarity, good colour, but centred to bottom right (see photo-plate I) (1)	£125
189 ☆	Another copy with large part original gum, excellent colour, but off centre, and has plain edge at top (see photo-plate VII) (1)	£125
190 ○	Another copy, pmkd. "MES" (Mesopotamia) in red, dated "AP. 27. 74.", centred to bottom-right (see photo-plate VII) (1)	E £10 to £15
191 ○	Another copy cancelled "CA" (Calliaqua) in red, dated "DE. 24. 74.", fine but centred to top-right (see photo-plate VII) (1)	E £10
192 田	Another copy, used on letter, well tied with rather heavy "A10" cancellation in black, pmkd. "ST. VINCENT JU.10.74" and "LONDON 29. JU. 74" (1)	E £10
193 ○	A well centred copy with "A 10" cancellation in red (1)	£17
194 ○	Another fine used copy (1)	£17

1875 PERF. 11-12½

195 ☆	1/- CLARET, S.G. 20, part o.g. and very fine (see photo-plate I) (1)	£40
196 ☆	Another part o.g. copy, off centre and perfs. irregular at right (see photo-plate VII) (1)	£40
197 田	Another copy used on envelope to London, not tied, pmk. "ST. VINCENT DE.28. 76" and "LONDON JA. 12 77" (1)	E £10
198 ○	1/- claret, a beautiful well centred copy with light red cancellation (see photo-plate VII) (1)	£8
199 ○	Another copy, has slight crease otherwise very fine (1)	£8
200 ○	Another copy with light red obliteration, very fine (1)	£8
201 ○	Another, light red circular "ST. VINCENT" dated cancellation centred to bottom left, fine (1)	£8
202 ○	Another, lightly pmkd. "ST. VINCENT AP.9.76.", centred slightly to top . . . (1)	£8
203 ○	Another, fine used (1)	£8
204 △	1/- claret, three copies of full deep colour, used together on piece, one copy has perfs. clipped at right (3)	£24
205 ○	1/- claret, a horizontal strip of four with light "A 10" cancellation in red, slightly creased, otherwise very fine (see photo-plate VII) (4)	£32 +

FEBRUARY 1877 PERF. 11-12½ x 15

206 ☆	6d. PALE YELLOW-GREEN, S.G. 21, fine unused but centred to top-right (see photo-plate VII) (1)	£20
207 ☆	The same in a part o.g. horizontal pair, left-hand stamp slightly creased and a little off centre (see photo-plate VII) (2)	£40 +
208 田	Two copies used on wrapper and well tied to London, pmkd. at lower-left corner "BAR" (Barrouallie) in red, and dated "AU.28. 78". The stamps are slightly creased (2)	E £10 to £15
209 ○	6d. pale yellow-green, two very fine used copies (2)	£6 10s.
210 △	6d. pale yellow-green, a horizontal pair used on small piece, well centred but rather dull colour (2)	£6 10s.+



25



76



99



130



242



243



247



188



195



249



254



260



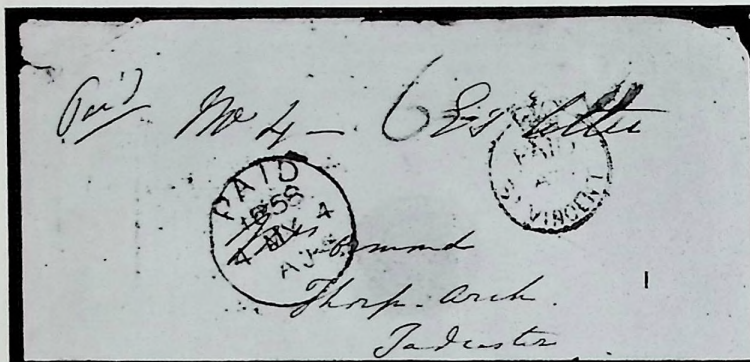
329



333



261



6



7



10



55



17



14



16



8



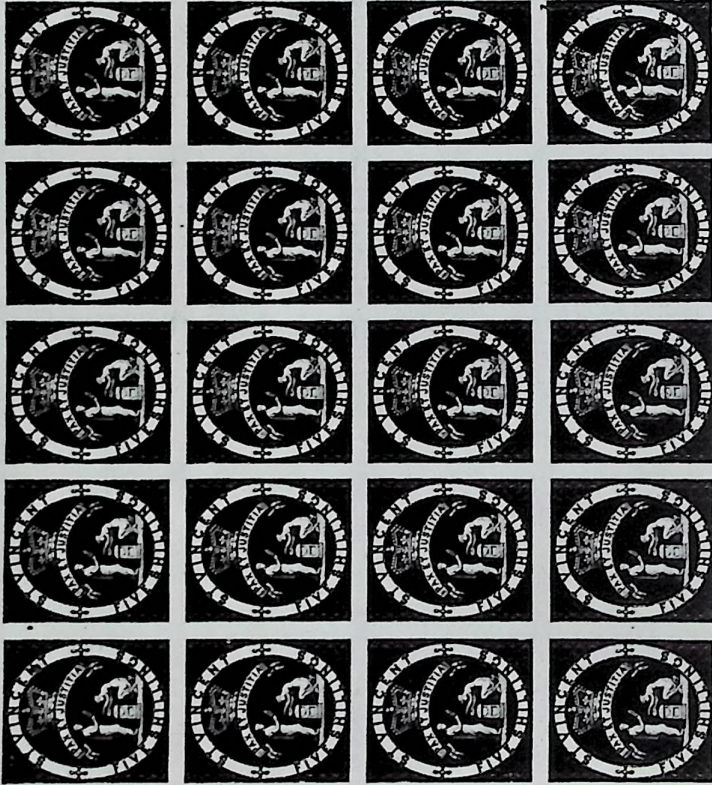
84



96



26 MAY 52



24



88



128



139



146



116



97



341



283





189



190



191



196



198



206



205



207



211



217



218



221



222



230



232



233



235



236



250



251



253



255



244



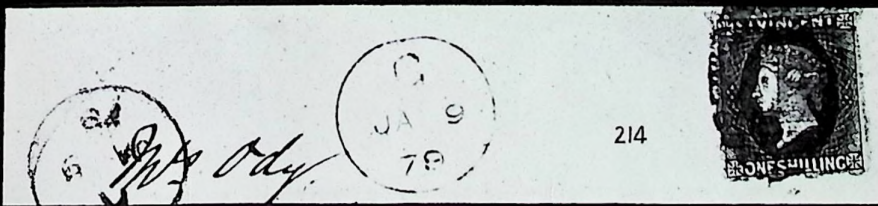
245



246



256



214



175



59

54



351



369



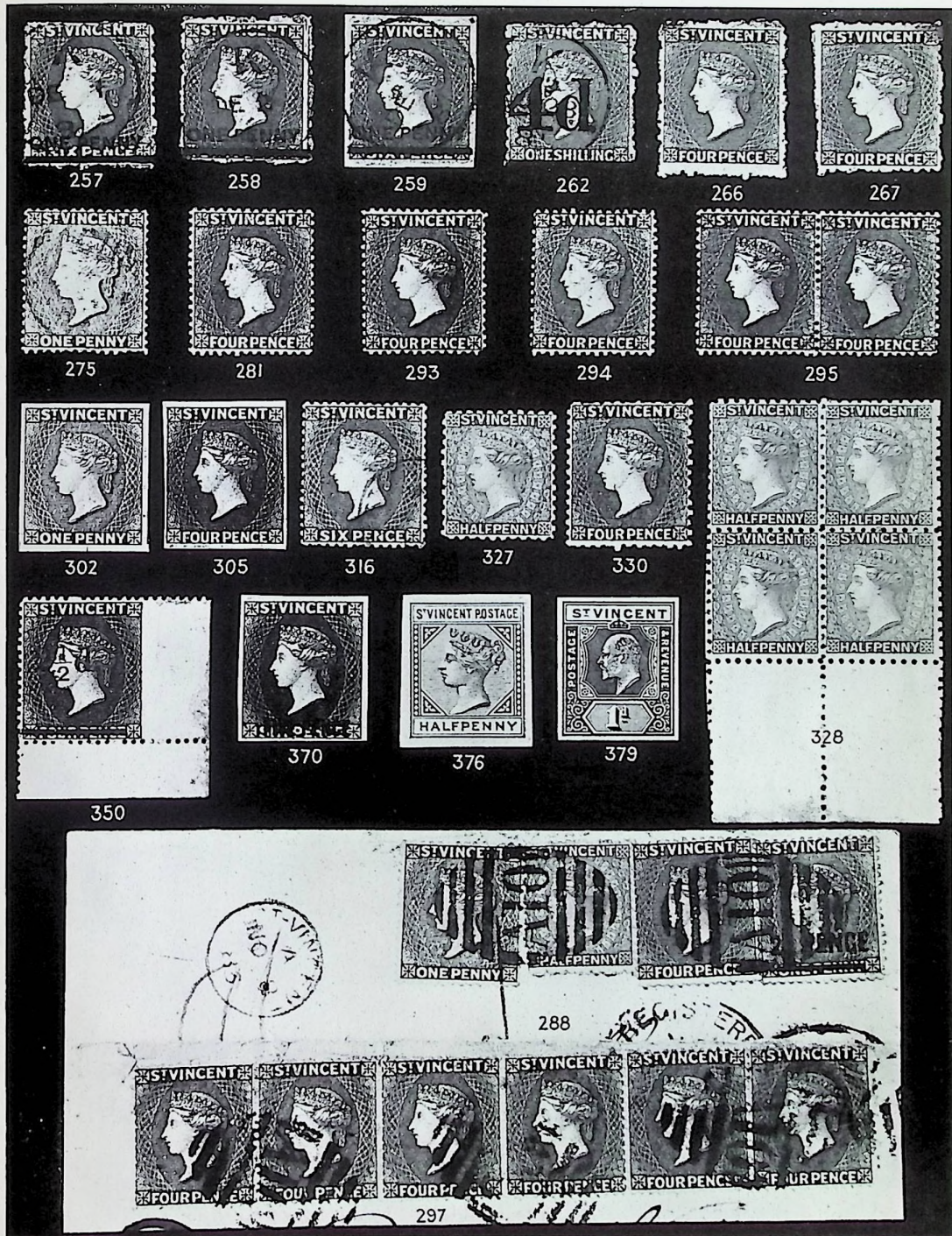
161



313



345



Lot No.	FEBRUARY 1877 PERF. 11-12½ x 15 (continued)	Cat. or Est. Value
211 ○	1/- VERMILION, S.G. 22, an extremely fine copy, pmkd. "CA" (Calliaqua) in red and dated "JU 9. 77" (see photo-plate VII) (1)	E £10
212 ○	Another exceedingly fine copy, with light "A 10" cancellation in black (1)	E £5
213 ○	1/- vermilion, three copies with different cancellations (3)	E £7
214 ☼	1/- vermilion used on mourning envelope to Hastings, well tied with "A 10" cancellation in red, and with rare "G" (Georgetown) circular cancellation in red, dated "JA 9. 79" at side of stamp (see photo-plate VII) (1)	E £50 to £75
215 ☼	1/- vermilion, two copies, one used on envelope, other on wrapper to London., one well centred and fine, other off centre and pmk. rather smudged (2)	E £10
216 ○	1/- vermilion, a horizontal strip of three, "A 10" cancellation in black rather heavy, and stamps centred to bottom left (3)	E £10

APRIL 1877 PERF. ABOUT 15

217 ☆	6d. PALE YELLOW-GREEN, S.G. 23, a large unused copy, showing portions of two adjoining stamps but perfs. cut design at left (see photo-plate VII) (1)	£17
218 ○	Another copy pmk. "L" (Layout) in red and dated "JU.2.80", slightly off centre but rare (see photo-plate VII) (1)	E £15
219 ○	6d. pale yellow-green, three copies with different cancellations, very fine (3)	£8 5s.
220 ○	6d. pale yellow-green, three copies with "GB/40c" cancellation, fine (3)	£8 5s.

JULY 1877 PERF. 11-12½

221 ☆	4d. DEEP BLUE, S.G. 24, part o.g. and exceedingly fine (see photo-plate VII) (1)	£20
222 ☆	Another part o.g. copy, brilliant and very fine (see photo-plate VII) (1)	£20
223 ○	Another copy, lightly pmkd., well centred and superb (1)	£8
224 ○	Another copy, lightly pmkd. "A 10" in black, but centred slightly to right (1)	£8
225 ○	Another copy with similar obliteration, very fine (1)	£8
226 ○	Another, lightly pmkd. and very fine (1)	£8

JUNE 1880 PERF. 11-12½

227 ☆	1d. OLIVE-GREEN, S.G. 25, part o.g. and very fine (1)	£4
228 ☆	Another copy unused showing vertical guide lines lower-right corner (1)	£4
229 ☆	The same in a part o.g. horizontal pair, right-hand stamp has tiny rough mark (2)	£8+
230 ○	1d. olive-green, pmkd. "BU" (Buccament), in red, dated "OC. 20. 18", and superimposed "A 10" in black (see photo-plate VII) (1)	E £10
231 ○	1d. olive-green, a used block of four, pmkd. "A 10" in black (4)	E £10
232 ☆	6d. BRIGHT GREEN, S.G. 26, brilliant part o.g. well centred and superb (see photo-plate VII) (1)	£22
233 ☆	Another part o.g. copy, equally fine (see photo-plate VII) (1)	£22
234 ○	6d. bright green, two used copies both very fine (2)	E £6

Lot No.	JUNE 1880 PERF. 11-12½ (continued)	Cat. or Est. Value
235 ☆	1/- BRIGHT VERMILION, S.G. 27, brilliant part o.g. and very fine see (photo-plate VII) (1)	£22
236 ☆	Another bright part o.g. copy, centred slightly to bottom-left (see photo-plate VII) (1)	£22
237 ○	Another copy, perfectly centred and lightly pmkd. "A 10" in black . . . (1)	E £6
238 ○	Another very fine copy, with similar cancellation (1)	E £5
239 ○	Two very fine used copies (2)	E £8
240 ○	1/- bright vermilion, a slightly creased but well centred strip of three . . . (3)	E £12
241 P	Defaced die of the 5/- in green on thin paper (1)	E £7
242 ☆	5/- ROSE-RED, S.G. 28, part o.g., brilliant, well centred and superb (see photo-plate I) (1)	£70
243 ☆	Another superb part o.g. copy (see photo-plate I) (1)	£70
244 ☆	Another part o.g. copy, equally fine (see photo-plate VII) (1)	£70
245 ☆	Another, has faint gum crease, otherwise exceedingly fine (see photo-plate VII) (1)	£70
246 ☆	Another, part o.g. and with sheet margin at bottom, very fine (see photo-plate VII) (1)	£70
247 ○	A GLORIOUS WELL CENTRED USED COPY WITH LIGHT CIRCULAR "KINGSTOWN AP.15. 86. ST. VINCENT" CANCELLATION. (see photo-plate I) (1)	£75
248 ☆	5/- rose-red, a part o.g. copy overprinted "REVENUE" double, one inverted, slightly stained (1)	E £5 to £10

END OF FIRST DAY'S SALE

VIEWING OF AUCTION LOTS

The times for the viewing of lots prior to each sale are given on the inside front cover of the catalogue. **If clients find it impossible to attend on the days and times allocated for viewing, we would ask them to give us 24 HOURS NOTICE of their desire to see particular lots, at the same time letting us know the date of the Sale and lot numbers.**

This will enable us to make the necessary arrangements for the lots to be available at the required time—unless they happen to have been already sent out on approval.

SECOND DAY OF SALE:
TUESDAY, NOVEMBER 15th, 1955

AT ONE-THIRTY P.M. PRECISELY

The quotations in the right-hand column in this Catalogue are from Stanley Gibbons' 1956, Part I, Catalogue and Supplements, unless preceded by the letter "E", when they indicate our estimate of the approximate market value.

ST. VINCENT (contd.)

1880, 1881 PROVISIONALS

<i>Lot No.</i>		<i>Cat. Value</i>
249 ☆	1d. ON HALF 6d. BLUE-GREEN, a part o.g. unsevered pair, S.G. 29a, full deep colour but a trifle stained (see photo-plate I) (2)	£100
250 ☆	½d. ON HALF 6d. BRIGHT GREEN, an unsevered pair, S.G. 30a, part o.g. and very fine (see photo-plate VII) (2)	£25
251 ☆	Another part o.g. unsevered pair (see photo-plate VII) (2)	£25
252 ☆	Another part o.g. unsevered pair, right-hand stamp has slight discolouration at top (2)	£25
253 ○	A used unsevered pair, lightly pmkd. "KINGSTOWN NO. 27. 85. ST. VINCENT", very scarce used (see photo-plate VII) (2)	£30
254 ☆	An unused unsevered pair left-hand half, the rare variety fraction bar omitted, S.G. 30b, centred to top-left but fine (see photo-plate I) (2)	£130
255 ☆	1d. ON 6d. BRIGHT GREEN, S.G. 31, part o.g., brilliant and very fine (see photo-plate VII) (1)	£26
256 ☆	Another very fine part o.g. copy (see photo-plate VII) (1)	£26
257 ○	Another copy, lightly pmkd. "K" (Kingstown), in black, dated "DE. 1. 81", very fine (see photo-plate IX) (1)	£24
258 ○	Another copy with similar cancellations, but dated "DE. 2. 81", centred slightly to bottom-left (see photo-plate IX) (1)	£24
259 △	Another used on small piece with similar cancellation, but dated "DE. 1.81", (see photo-plate IX) (1)	£24
260 ☆	4d. ON 1/- VERMILION, S.G. 32, part o.g. well centred, and superb (see photo-plate I) (1)	£100
261 ○	Another copy with light "ST. VINCENT" date stamp, very fine (see photo-plate I) (1)	£60
262 ○	Another very fine copy, with light "K" (Kingstown), datestamp (see photo-plate IX) (1)	£60

Lot No.	DECEMBER 1881 PERF. 11-12½	Cat. or Est. Value
263 ☆ ㊦	½d. ORANGE, S.G. 33, a complete o.g. sheet of sixty with margins, very fine (60)	£45
264 ○	½d. orange, horizontal pair and eleven single copies, 1d. drab strip to three, a pair and seven singles, all used, various cancellations (25)	£21 15s.
265 ☆	1d. DRAB S.G. 34, two part o.g. copies of slightly different shade, both a little off centre (2)	£8 10s.
266 ☆	4d. BRIGHT BLUE, S.G. 35, part o.g. and very fine (see photo-plate IX) (1)	£18
267 ☆	Another part o.g. copy, centred slightly to right (see photo-plate IX) (1)	£18
268 ㊦	4d. bright blue, centred to right, used on neat envelope addressed to Winch Brothers, Colchester, pmkd. "ST. VINCENT OC. 9. 82" and "COLCHESTER OC. 28. 82" (1)	E £10
269 ㊦	4d. bright blue, a vertical pair, upper stamp creased, used on blue "O.H.M.S." envelope to London, dated 1882, tied with "GB/40c" pmk. (2)	E £10
270 ○	4d. bright blue, two very fine lightly pmkd. copies (2)	£7 10s.
271 ○	4d. bright blue, four copies, one thinned, others fine to very fine (4)	£15
272 ○	4d. bright blue, a lightly pmkd. horizontal pair, perfs. cut design at right, otherwise very fine (2)	£7 10s. +
1882-84, PERF. 14		
273 ☆ ㊦	1d. DRAB, S.G. 36, a perfectly centred part o.g. block of four (4)	£5 +
274 ☆ ㊦	Another part o.g. block of four, not quite so well centred (4)	£5 +
275 ○	1d. drab, pmkd. "CUM" (Cumberland), in red, fine (see photo-plate IX) (1)	E £10
276 ○	1d. drab, four copies with abbreviated town pmks. in red or black, comprising "CA", "CH", "CO", and "BAR"; "CH" slightly thinned, others fine (4)	E £4
277 ○	1d. drab, ten copies with red cancellations, including "CH" and "CO" (2), mostly very fine (10)	E £6
278 ○	1d. drab, strip of four, pair, and seventeen single copies, various cancellations and all in black, mostly very fine (23)	E £9
279 ☆ ㊦	2½d. on 1d. LAKE, S.G. 37, a very fine o.g. block of nine (3 x 3) (9)	£9
280	2½d. on 1d. lake, three blocks of four, four single copies, o.g. and a used pair, and fifteen single copies (33)	E £10
281 ☆	4d. BRIGHT BLUE, S.G. 38, a brilliant part o.g. copy (see photo-plate IX) (1)	£20
282 ☆	Another part o.g. copy, slightly thinned (1)	£20
283 ☆ ㊦	The same in a part o.g. block of four, with sheet margin at bottom showing guide lines, has few perfs. clipped otherwise very fine (see photo-plate V) (4)	£80 +
284 ㊦	4d. bright blue, well tied to envelope to Kingstown, Jamaica, pmk. "ST. VINCENT OC. 9. 83" and "KINGSTOWN OC. 19. 83" (1)	E £12
285 ○	4d. bright blue, two very fine used copies (2)	£5 15s.
286 ○	4d. bright blue, three copies, fine used (3)	£8 12s.
287 ○	4d. bright blue, a very fine used horizontal pair (2)	£5 15s. +
288 ㊦	4d. bright blue, used on registered envelope addressed to Winch Brothers, Colchester with same issue, 1d. drab. 2½d. on 1d. lake and 1881 ½d. orange, pmk. "ST. VINCENT NO. 8. 83" and "COLCHESTER NO. 27. 83" (see photo-plate IX) (4)	E £15

Lot No.	1885	Cat. or Est. Value
289 ○	1d. on 2½d. on 1d. LAKE, S.G. 39, two blocks of four and five single copies, all o.g. or part o.g. (13)	£13
290 ○	1d. on 2½d. on 1d. lake, three horizontal pairs and eleven single copies, all used, including two with three bars cancelling "2½ PENCE" instead of two . . . (17)	£17

1885, WMK. CROWN CA, PERF. 14

291	½d. green, the o.g. and used collection, including two o.g. sheets, blocks, a used block of sixty, and shades (239)	E £5
292	1d. rose-red, S.G. 41, two blocks of four, two pairs, eight singles, all o.g. or part o.g. and nine used copies, one with Biabou date stamp (29)	E £7
293 ☆	4d. red-brown S.G. 42, brilliant part o.g. (see photo-plate IX) (1)	£25
294 ☆	Another part o.g. copy, centred slightly to left (see photo-plate IX) (1)	£25
295 ☆	The same in a well centred part o.g. horizontal pair (see photo-plate IX) (2)	£50+
296 ☒	4d. red-brown, used on blue envelope addressed to Winch Brothers, Colchester, well tied with circular "KINGSTOWN NO. 29. 85. ST. VINCENT" cancellation, very fine (1)	E £10
297 ☒	4d. red-brown a horizontal strip of six used on registered envelope addressed to Winch Brothers, Colchester, and well tied with "A 10" (see photo-plate IX) (6)	E £30
298 ○	4d. red-brown, three very fine lightly pmkd. copies (3)	£6 15s.
299 ○	A similar lot (3)	£6 15s.
300 ○	4d. red-brown, a very fine used horizontal pair (2)	£4 10s.+

1886-89, WMK. CROWN CA, PERF. 14

301	1d. rose, S.G. 43, four blocks of four, two pairs, six singles, o.g. or part o.g. and a horizontal pair and twelve single copies used, including scarce pmks. (40)	E £10
302 P	1d. red, imperf. proof on Crown CA paper, very fine (see photo-plate IX) (1)	E £10
303	1d. red, S.G. 44, the o.g. and used Collection, including several scarce cancellations (130)	E £20
304	2½d. on 1d. milky blue, S.G. 45, blocks of nine, four, two strips of three, five singles, all o.g. or part o.g., and three singles used and a horizontal pair (29)	£39 15s.
305 P	4d. purple-brown, imperf. proof on Crown CA paper, very fine (see photo-plate IX) (1)	E £10
306 ☆☒	4d. lake-brown, S.G. 47, a complete o.g. sheet of thirty with margins (30)	£33 15s.
307 ☆	4d. purple-brown, and 4d. lake-brown, all o.g. or part o.g. comprising a block of four, pair, and ten singles (16)	E £6
308 ○	4d. purple-brown, and 4d. lake-brown, a fine used Collection (37)	E £10
309 ☆	6d. violet, S.G. 48, o.g. and very fine (1)	£6
310 ☆	Another fine o.g. copy (1)	£6
311 ☆	Another copy, part o.g. (1)	£6
312 ☆	The same in a very fine part o.g. horizontal pair (2)	£12+
313 ☆☒	The same in a brilliant block of twelve (3 x 4) (see photo-plate VIII) (12)	£72+

Lot No.	1886-89, WMK. CROWN CA, PERF. 14 (continued)	Cat. or Est. Value
314	⊠ 6d. violet, used on slightly stained blue registered envelope addressed to Winch Brothers, Colchester, with 4d. purple-brown of same issue, dated 1889 (2)	E £10
315	○ 6d. violet, light dated cancellation, but a little off centre (1)	£7
316	○ 6d. violet, variety wmk. inverted, lightly pmkd. in red and very fine (see photo-plate IX) (1)	E £10
317	☆ 1d. deep orange, S.G. 48a, seven copies, all o.g. or part o.g. fair to fine (7)	£10 10s.
318	○ 1/- deep orange, eleven used copies, various shades, condition fair to fine (11)	£16 10s.
319	☆ ⊠ 5/- carmine-lake, S.G. 49, a complete o.g. sheet of twenty with margins (20)	£40
320	☆ ⊠ 5/- brown-lake, S.G. 49a, an o.g. sheet of twenty with margins (20)	£40
321	☆ ⊠ 5/- brown-lake, an o.g. block of fifteen (5 x 3) (15)	£30
322	☆ 5/-, shades, fifteen single copies, all o.g. or part o.g. (15)	£30
323	☆ 5/-, shades, a block of four and six single copies, all o.g. or part o.g. (10)	£20
324	○ 5/-, shades, a horizontal strip of four, vertical pair and a horizontal pair, all lightly pmkd., last on small piece (8)	£20
325	○ 5/-, shades, fifteen copies, one on entire and some on pieces, mostly very fine . . . (15)	£37 10s.

1886-89, WMK. CROWN CA PERF. 12

326	½d. green, S.G. 50, a block of four and three singles, all o.g. or unused ; also three single used copies, some slightly thinned (10)	£11 15s.
327	☆ The unissued ½d. orange, S.G. 50a, part o.g. and very fine (see photo-plate IX) . . . (1)	£65
328	☆ ⊠ THE SAME IN A FINE PART O.G. BLOCK OF FOUR WITH SHEET MARGIN AT BOTTOM, VERY RARE (see photo-plate IX) (4)	£260+
329	☆ THE UNISSUED 2½d. MILKY BLUE (WITHOUT SURCHARGE), UNUSED AND FINE, UNPRICED AND VERY RARE (see photo-plate I) (1)	E £75 to £100
330	☆ 4d. bright blue, S.G. 51, part o.g. and very fine (see photo-plate IX) (1)	£15
331	○ 4d. bright blue, four lightly pmkd. copies, one has thin spot, others fine to very fine (4)	£7 10s.
332	○ 4d. bright blue, a choice used horizontal pair (2)	£3 15s.+
333	☆ 4d. dull blue, S.G. 52, part o.g. and very fine (see photo-plate I) (1)	£60
334	○ Another copy, with light red circular dated pmk., very fine (1)	£12
335	○ Another copy, lightly cancelled in black and very fine (1)	£12
336	☆ 6d. bright green, S.G. 53, o.g. and very fine (1)	£10
337	☆ Another copy, part o.g. and fine (1)	£10
338	☆ A similar lot (1)	£10
339	○ 6d. bright green, very fine used (1)	£10
340	○ Another used copy, fine but for thinning (1)	£10
341	☆ ⊠ 6d. bright green, a perfectly centred o.g. block of four, with sheet margin at top, slightly stained, otherwise very fine (see photo-plate V) (4)	£40+
342	☆ 1/- orange-vermilion, S.G. 54, two very fine o.g. copies (2)	£7 10s.
343	☆ 1/- orange-vermilion, a very fine part o.g. horizontal pair (2)	£7 10s.+
344	☆ ⊠ The same in a brilliant o.g. block of four with sheet margin at bottom, showing guide lines (4)	£15+
345	☆ ⊠ The same in an o.g. block of six (2 x 3) with sheet margin at top and bottom (see photo-plate VIII) (6)	£22 10s.
346	○ 1/- orange-vermilion, two fine used copies (2)	£8

Lot No.	1890	Cat. or Est. Value
347 ☆	2½d. on 4d. lake-brown, S.G. 55, part o.g. and very fine (1)	£4
348 ☆	A similar lot (1)	£4
349 ☆	A similar lot (1)	£4
350 ☆	2½d. on 4d. lake-brown, a part o.g. copy from lower-right corner of sheet, variety imperf. between stamp and margin at right (see photo-plate IX) (1)	E £10
351 ☆田	2½d. on 4d. lake-brown, a very fine part o.g. block of four with sheet margin at bottom, top-right stamp variety no bar in fraction (see photo-plate VIII) (4)	£24+
352 ☆回	2½d. on 4d. lake brown, an o.g. block of nine (3 x 3) with sheet margin at top and bottom, top stamp variety no bar in fraction (9)	£44+
353 ○	2½d. on 4d. lake-brown, variety no bar in fraction, a fine lightly pmkd. copy (1)	£15
354 △	2½d. on 4d. lake-brown, used on large part dated envelope with 1893 5d. on 6d. (2)	£15 6s.
355 △田	2½d. on 4d. lake-brown, a block of four used on piece, upper pair variety no bar in fraction (4)	£39+

1890-91

356 ☆回	2½d. on 1d. grey-blue, S.G. 55b, fine o.g. blocks of six and four (10)	£11 5s.+
357	2½d. on 1d. grey-blue, block of four, five singles, all o.g. or part o.g. and nine single used copies, fair to fine (18)	£13 1s.
358	2½d. on 1d. blue, S.G. 56, block of thirty, pair, thirteen singles, all o.g. or part o.g. and nineteen used copies, one on piece and pmkd. "BEQ" (Bequia) (64)	E £5
359 ☆回	6d. dull purple, S.G. 57, an o.g. block of sixty with margins (60)	£18+
360	6d. dull purple, the o.g. and used Collection including shades, blocks, etc. (93)	E £10
361 ☆回	1/- orange-vermilion, S.G. 58, an o.g. sheet of thirty with margins (30)	£18 15s.+
362 ☆回	A similar sheet (30)	£18 15s.+
363 ☆	1/- orange-vermilion, a block of fifteen, four, three pairs and ten single copies, all o.g. or part o.g., various shades (35)	£21 17s.
364 ○	1/- orange-vermilion, ten used copies, two on separate entires (10)	£10

1892

365 ☆回	5d. on 4d. lake-brown, S.G. 59, a complete o.g. sheet of thirty with margins, number 19 shows "E" double and number 20 "N" double (30)	£26 5s.+
366 ☆	5d. on 4d. lake-brown, the Collection, all o.g. or part o.g. including blocks, pairs and varieties "E" and "N" double (25)	E £10
367 ○	5d. on 4d. lake-brown, the used Collection containing blocks on pieces, entires, etc. (28)	£35

1893

368	4d. yellow, S.G. 60, the o.g. Collection including a sheet of thirty, blocks and seven used copies (57)	£12 5s.
369 ☆田	4d. olive-yellow, S.G. 60a, an o.g. well centred block of four (see photo-plate VIII) (4)	£120
370 P	5d. on 6d. lake, an imperf. Proof on Crown CA wmk. paper, superb (see photo-plate IX). (1)	E £10
371 ☆回	5d. on 6d. deep lake, S.G. 62, a complete o.g. sheet of sixty with margins (60)	£10 10s.+
372 ☆	5d. on 6d., the o.g. or part o.g. Collection containing blocks, pairs and various shades (45)	E £7
373 ○	Another Collection, all used, containing blocks and one entire and various shades (33)	E £6

Lot No.	1897	Cat. or Est. Value
374	2½d. blue and 5d. sepia, S.G. 64, 65, the fine o.g. and used Collection . . . (50)	E £12
375	3d. on 1d. mauve, and 3d. on 1d. red-mauve, S.G. 66, 66a, the Collection, mostly o.g. including a complete sheet of sixty . . . (88)	E £8
—————		
376 E	Essay of Victorian key type perf. and in green with "St. VINCENT POSTAGE" painted in at top, and "HALFPENNY" at bottom, very rare (see photo-plate IX) (1)	E £20
377 ☆	1899 set, S.G. 67-75, all o.g. (9)	£7 12s.
378 O	— Set, all lightly cancelled (9)	£9 10s.
379 P	1902 1d., Plate Proof in green and brown on Crown CA wmk. paper (see photo-plate IX) (1)	E £5 to £7
380 P	— Another copy in green and ochre (1)	E £5 to £7
381 P	— Another copy in green and violet (1)	E £5 to £7
382 P	— 1/-, Plate Proof in purple and black on Crown CA wmk. paper (1)	E £5 to £7
383 P	— Another copy in purple and orange (1)	E £5 to £7
384 P	— Another in purple and brown, has small red marks on surface (1)	E £5
385 ☆	— Set with a duplicate 1/-, S.G. 76-84, all o.g. or part o.g. (10)	£9 3s.
386 ☆田	1902 2/- green and violet, S.G. 83, a superb o.g. block of four (4)	£6+
387 ☆田	1904-11 1/- (with Control), 2/- and 5/-, S.G. 91-93, all in o.g. blocks of four (12)	£19
388 ☆	— £1, purple and black on red, S.G. 93a, o.g. and very fine (1)	£16
389 △	— Another copy, used on piece, dated 1912, centred to bottom-left (1)	£14
390	A Collection of Edwards, both unused and used, including sets and blocks of four (59)	E £10
391 ☆田	1907 set, S.G. 94-98, all o.g. in blocks of four (20)	£11 6s.
392 ☆回	— 2d. orange, S.G. 96, an o.g. half sheet of thirty (30)	£12 15s.
393 ☆回	— 2½d. blue, S.G. 97, an o.g. half sheet of thirty (30)	£30
394	1907 to 1911, the o.g. and used Collection including sets and blocks (86)	E £10
395 ☆回	1909 1d. carmine, S.G. 99, a complete o.g. sheet of sixty with margins (60)	£12
396 ☆回	— 1/- black on green, S.G. 101, an o.g. block of eighteen (6 x 3) from bottom of sheet (18)	£13 10s.
397 ☆	1909-11 ten o.g. sets, some in blocks (50)	£15 17s.
398 ☆回	— ½d. (60), 1d. (30), 2d. (18), 2½d. (18), 3d. (18), 6d. (18), all in o.g. blocks (162)	£32 2s.

<i>Lot No.</i>	<i>Cat. or Est. Value</i>
399 ☆ ☹ 1913 set in o.g. blocks of four including most shades	(64) E £11
400 ○ — ½d. to 2/-, 5/- (3) and 1914 1/-, all used	(14) £9 14s.
401 ☆ — £1, S.G. 118, o.g. and fine	(1) £5
402 ☆ — The fine o.g. Collection containing values to £1, duplicates and blocks . .	(206) E £10
403 ☆ ☹ 1915 1d. on 1/- black on green, S.G. 120, a complete o.g. sheet of 120 . .	(120) £48
404 — 1d. on 1/- black on green, 136 o.g. copies, chiefly in large blocks and five used	(141) £57 10s.
405 A Collection of War stamps in sheets, panes and blocks, practically all o.g. .	(538) E £4
406 ☆ 1921-32 o.g. set with duplicates and blocks	(40) E £4
407 ☹ Various entires and large pieces bearing Queen issues	(42) E £10
408 A Collection of Revenue stamps, some o.g.	(39) E £10
409 S A fine Collection of Queen and Edward "SPECIMEN" stamps	(29) E £15 to £20
410 An interesting Collection of forgeries	(23) E £5

END OF SALE

OUTSTANDING FORTHCOMING AUCTIONS

In addition to the Programme of Sales (given on opposite page) many valuable and important properties have been received for which sale dates have not yet been allocated. These include :—

The "Frank F. Martin" 45-Vol. General Collection; further choice sections of the "Wm. Glossop" Collections, including Cape of Good Hope, Falkland Islands, Gold Coast, Gambia, Grenada, Lagos, Malta, Nevis, Sierra Leone, etc.; a fine Collection of Switzerland offered by Mr. E. Kuhn, of Grenchen, Switzerland; an extensive 36-Vol. Collection of Poland; the "Captain J. N. Collins" 3-Vol. Collection of British West Indies; the fine "Jack Shepherd" Specialised Collection of Cape of Good Hope, and other important properties.

The Bond Street Stamp Auctions

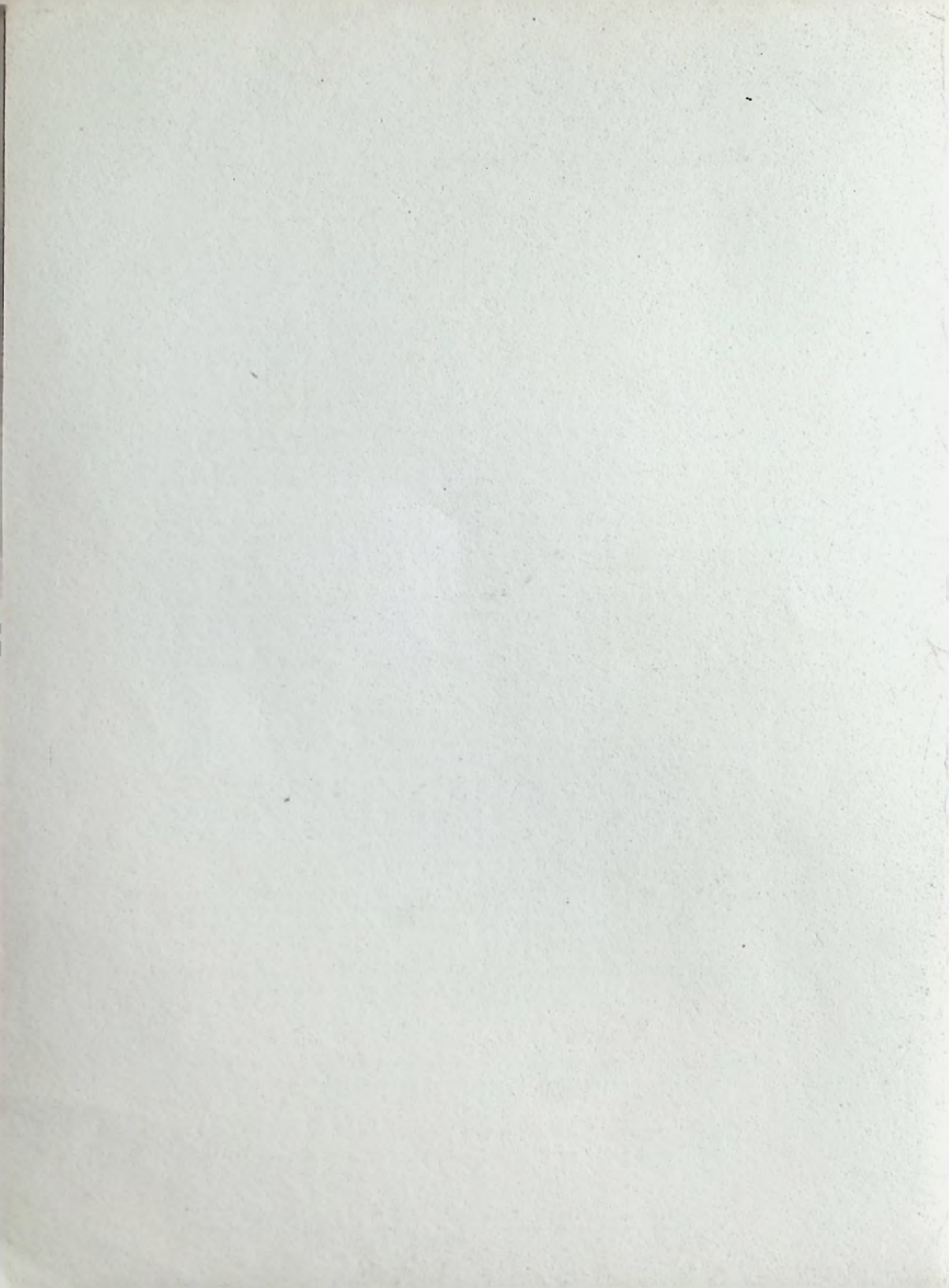
Programme of Sales

at 1.30 p.m. each day.

- OCTOBER 10, 11 . . . A WORLD SALE, with outstanding or specialised selections of Austria, GERMAN STATES (especially Thurn and Taxis), Great Britain, etc., a specialised Collection of SOUTH AFRICA and numerous Collections *en bloc*.
- OCTOBER 17, 18 . . . IMPORTANT EMPIRE SALE, including the "Bernard Hirst" Collection; numerous "3-figure" lots *en bloc* followed by outstanding groups of Bahrain, CAPE TRIANGULARS, Cyprus, Falkland Islands (sheets), INDIA including the "Carstairs" Collection of 1854, with rare blocks on covers from the Cossimbazar Archives, Newfoundland, New South Wales, etc. *Catalogue with 5 photo-plates, 2/-*
- OCTOBER 24, 25 . . . FOREIGN COUNTRIES, including the Valuable 88-Volume Collection of Europe, etc., offered by order of the Executors of the late Dr. Wilfred M. Anthony of London, E.; with choice sections of Austria, Belgium, Finland, France, German States, GREECE (Paris and Athens Printings), Italian States, Luxemburg, Sweden, etc., etc.
- OCTOBER 31 . . . The outstanding Collections of IMPERFORATES only, of CAPE OF GOOD HOPE, CEYLON, GREAT BRITAIN, NEW SOUTH WALES and NEW ZEALAND, offered by order of Mrs. Evelyn Pavitt, of Beaconsfield. *Catalogue with 6 photo-plates, 2/-*
- NOVEMBER 7, 8 . . . FIRST DAY—CHOICE BRITISH COMMONWEALTH and FOREIGN, mostly in mint condition and including many "Specimen" sets. SECOND DAY—FINE EMPIRE PROPERTIES, comprising the "Mrs. E. Peto Dickinson" 6-Vol. Collection, and other properties; strong in Canada, CAPE OF GOOD HOPE, Falkland Islands, Great Britain, etc., etc.
- NOVEMBER 14, 15 . . . *Catalogue herewith.*
- NOVEMBER 21, 22, 23 } THE MAGNIFICENT EMPIRE and FOREIGN COLLECTIONS
NOVEMBER 28, 29, 30 } offered by order of M. Roger Leret of Paris.
Art Souvenir Catalogue, 5/- . List of Prices Realised, 2/6.
- DECEMBER 5 . . . RHODESIA—The Extensive and Valuable Gold Medal Collection, offered by order of the Executors of the late John Sinton, Esq., F.R.P.S.L., of Newcastle-upon-Tyne.
Catalogue with 4 photo-plates, 2/-
- DECEMBER 12, 13, 14 EMPIRE SALE—including the British Commonwealth Portion of the "F. F. Martin" Collection; also other important properties, including strong sections of Cape of Good Hope, Great Britain, Malta, etc., etc.
- DECEMBER 19, 20 . . . FINE GENERAL SALE, comprising choice Empire and Foreign Properties, and including a Collection of Poland, fine United States, etc., etc.

*Fully Illustrated Catalogues for above Sales, 1/- each, except where otherwise mentioned.
Lists of Prices Realised, 1/- each, except where otherwise mentioned.*

**Twelve Months' Subscription for all London Catalogues
and Lists of Prices Realised, 30/- post free.**



Sales 2583-2584

Price 1/-



List of

PRICES REALISED

at the Sale of

The "William Glossop" Collection of

St. Vincent

Postage Stamps

held on

November 14th and 15th 1955

by

H. R. HARMER Ltd.

International Stamp Auctioneers.

41, NEW BOND STREET, LONDON, W.1.

Telephone: MAYfair 0218. Telegrams: "Phistamsel, Wesdo, London."

SALES, NOVEMBER 14TH AND 15TH, 1955

LOT	£	s.	d.	LOT	£	s.	d.	LOT	£	s.	d.	LOT	£	s.	d.
1	5	10	0	53	17	0	0	105	5	10	0	157	6	10	0
2	12	10	0	54	30	0	0	106	3	0	0	158	6	10	0
3	12	10	0	55	65	0	0	107	3	3	0	159	10	10	0
4	10	0	0	56	6	6	0	108	36	0	0	160	2	10	0
5	44	0	0	57	8	10	0	109	18	0	0	161	125	0	0
6	60	0	0	58	7	10	0	110	16	0	0	162	42	0	0
7	84	0	0	59	9	9	0	111	18	0	0	163	40	0	0
8	30	0	0	60	3	15	0	112	9	9	0	164	50	0	0
9	110	0	0	61	6	15	0	113	3	12	6	165	25	0	0
10	8	0	0	62	6	0	0	114	5	10	0	166	38	0	0
11	6	0	0	63	6	0	0	115	2	12	6	167	14	0	0
12	52	10	0	64	4	0	0	116	55	0	0	168	9	9	0
13	20	0	0	65	5	5	0	117	22	0	0	169	4	4	0
14	10	0	0	66	11	0	0	118	13	10	0	170	6	6	0
15	40	0	0	67	—			119	13	10	0	171	7	0	0
16	21	0	0	68	16	0	0	120	8	10	0	172	8	0	0
17	7	10	0	69	10	10	0	121	5	15	0	173	5	10	0
18	60	0	0	70	5	0	0	122	14	0	0	174	8	10	0
19	90	0	0	71	3	3	0	123	—			175	9	9	0
20	90	0	0	72	4	0	0	124	10	0	0	176	33	0	0
21	65	0	0	73	—			125	18	0	0	177	9	0	0
22	90	0	0	74	67	10	0	126	52	10	0	178	30	0	0
23	55	0	0	75	31	0	0	127	14	0	0	179	20	0	0
24	135	0	0	76	26	0	0	128	75	0	0	180	19	0	0
25	110	0	0	77	10	10	0	129	52	10	0	181	6	6	0
26	6	6	0	78	9	0	0	130	23	0	0	182	16	0	0
27	4	15	0	79	12	10	0	131	12	0	0	183	17	0	0
28	4	15	0	80	12	0	0	132	10	0	0	184	10	10	0
29	8	0	0	81	12	0	0	133	13	0	0	185	2	0	0
30	3	5	0	82	—			134	6	0	0	186	13	0	0
31	3	15	0	83	22	0	0	135	4	5	0	187	22	0	0
32	2	17	6	84	52	10	0	136	1	10	0	188	50	0	0
33	2	15	0	85	22	0	0	137	21	0	0	189	—		
34	2	17	6	86	24	0	0	138	11	0	0	190	20	0	0
35	7	10	0	87	32	0	0	139	80	0	0	191	8	0	0
36	34	0	0	88	80	0	0	140	36	0	0	192	14	0	0
37	22	0	0	89	13	0	0	141	18	0	0	193	13	0	0
38	4	4	0	90	13	0	0	142	36	0	0	194	14	0	0
39	3	15	0	91	12	10	0	143	5	5	0	195	31	0	0
40	2	17	6	92	3	5	0	144	3	0	0	196	13	10	0
41	—			93	2	12	6	145	110	0	0	197	10	10	0
42	30	0	0	94	—			146	110	0	0	198	16	0	0
43	8	10	0	95	18	0	0	147	5	10	0	199	6	6	0
44	1	6	0	96	50	0	0	148	7	15	0	200	8	10	0
45	5	5	0	97	65	0	0	149	4	5	0	201	5	10	0
46	16	0	0	98	63	0	0	150	6	10	0	202	3	15	0
47	11	0	0	99	60	0	0	151	15	10	0	203	4	15	0
48	3	5	0	100	22	0	0	152	10	10	0	204	8	10	0
49	14	0	0	101	33	0	0	153	18	0	0	205	21	0	0
50	14	0	0	102	21	0	0	154	15	10	0	206	11	0	0
51	4	4	0	103	22	0	0	155	10	0	0	207	48	0	0
52	8	0	0	104	13	10	0	156	7	10	0	208	29	0	0

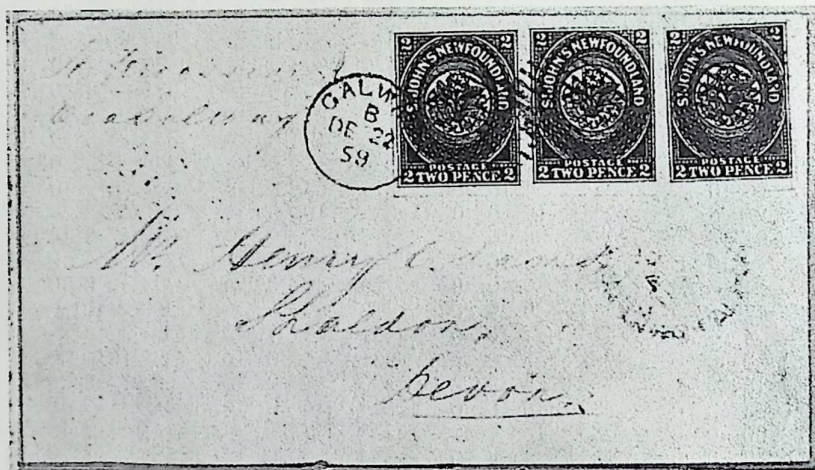
SALES, NOVEMBER 14TH AND 15TH, 1955

LOT	£	s.	d.	LOT	£	s.	d.	LOT	£	s.	d.	LOT	£	s.	d.
209	5	10	0	260	95	0	0	311	2	15	0	361	13	10	0
210	3	0	0	261	42	0	0	312	8	0	0	362	11	0	0
211	11	0	0	262	36	0	0	313	42	0	0	363	8	10	0
212	6	10	0	263	29	0	0	314	10	0	0	364	—	—	—
213	5	5	0	264	23	0	0	315	5	10	0	365	16	0	0
214	55	0	0	265	6	10	0	316	11	0	0	366	12	10	0
215	22	0	0	266	13	10	0	317	5	5	0	367	16	0	0
216	6	0	0	267	14	0	0	318	18	0	0	368	11	0	0
217	16	0	0	268	22	0	0	319	36	0	0	369	63	0	0
218	11	0	0	269	16	0	0	320	35	0	0	370	23	0	0
219	5	10	0	270	4	0	0	321	13	10	0	371	8	0	0
220	3	0	0	271	3	12	6	322	21	0	0	372	11	10	0
221	22	0	0	272	2	17	6	323	13	10	0	373	8	10	0
222	22	0	0	273	10	10	0	324	11	0	0	374	20	0	0
223	6	10	0	274	4	10	0	325	23	0	0	375	19	0	0
224	5	5	0	275	19	0	0	326	10	0	0	376	24	0	0
225	5	15	0	276	8	10	0	327	52	10	0	377	3	10	0
226	5	10	0	277	6	10	0	328	190	0	0	378	5	0	0
227	4	4	0	278	9	0	0	329	140	0	0	379	8	0	0
228	2	15	0	279	9	9	0	330	17	0	0	380	10	0	0
229	5	5	0	280	11	10	0	331	3	7	6	381	13	0	0
230	9	0	0	281	16	0	0	332	5	10	0	382	16	0	0
231	16	0	0	282	2	0	0	333	90	0	0	383	18	0	0
232	34	0	0	283	110	0	0	334	16	0	0	384	5	0	0
233	30	0	0	284	16	0	0	335	7	10	0	385	4	10	0
234	7	0	0	285	4	4	0	336	5	10	0	386	3	3	0
235	25	0	0	286	3	5	0	337	3	7	6	387	8	10	0
236	18	0	0	287	2	17	6	338	2	12	6	388	15	0	0
237	7	10	0	288	21	0	0	339	10	0	0	389	9	9	0
238	5	5	0	289	14	0	0	340	1	0	0	390	12	0	0
239	7	10	0	290	18	0	0	341	90	0	0	391	4	4	0
240	10	0	0	291	8	10	0	342	2	12	6	392	2	15	0
241	4	4	0	292	8	10	0	343	3	5	0	393	4	0	0
242	46	0	0	293	18	0	0	344	18	0	0	394	12	0	0
243	38	0	0	294	12	10	0	345	17	0	0	395	2	10	0
244	38	0	0	295	57	10	0	346	6	6	0	396	3	0	0
245	38	0	0	296	18	0	0	347	3	3	0	397	3	10	0
246	40	0	0	297	—	—	—	348	2	17	6	398	8	10	0
247	52	10	0	298	4	0	0	349	2	17	6	399	13	10	0
248	6	10	0	299	5	0	0	350	9	9	0	400	3	12	6
249	65	0	0	300	8	0	0	351	23	0	0	401	3	7	6
250	12	10	0	301	15	0	0	352	30	0	0	402	13	10	0
251	10	0	0	302	20	0	0	353	8	0	0	403	12	10	0
252	9	0	0	303	29	0	0	354	2	5	0	404	27	0	0
253	23	0	0	304	13	0	0	355	18	0	0	405	5	15	0
254	57	10	0	305	20	0	0	356	8	0	0	406	6	6	0
255	15	0	0	306	23	0	0	357	3	7	6	407	40	0	0
256	12	10	0	307	5	10	0	358	10	0	0	408	6	6	0
257	11	10	0	308	10	10	0	359	16	0	0	409	32	0	0
258	9	9	0	309	4	4	0	360	16	0	0	410	10	10	0
259	11	10	0	310	3	10	0								

Total for Sale — £8,001 0 0

Caspary on Tour

A Galaxy of Classic Rarities



A Typical "Caspary" cover

Arrangements have been made to display over 100 sheets of gems from the "Caspary" Collections at the

NATIONAL STAMP EXHIBITION

at the

CENTRAL HALL, WESTMINSTER

7-14 JANUARY, 1956

Superb and rare pieces from many countries will be shown with particular emphasis on the British Empire and European sections.

Many of the "Caspary" rarities have never before been exhibited, and this will be the only opportunity of seeing them in England before they are dispersed to many parts of the world.

Further information will be published in the International Philatelic Press in due course.