

lot 30
108

THE "W. S. DAVY"



COMMONWEALTH CLASSICS ON COVERS

MAY 9, 10
1960

H. R. HARMER LTD., LONDON

CONDITIONS OF SALE.

Every lot offered at this auction is offered subject to the Philatelic Auctioneers' Standard Terms and Conditions of Sale which are as follows:—

1.—The highest bidder for each lot shall be the purchaser thereof. If any dispute arises as to the highest bidder the Auctioneer shall determine the dispute and may put up again and re-sell the lot in respect of which the dispute arises.

2.—(a) The bidding and advances shall be regulated by and at the discretion of the Auctioneer, and he shall have the right to refuse a bid.

(b) The purchaser of each lot shall at the sale if required (i) give his or her name and address to the Auctioneer, and/or (ii) pay into the hands of the Auctioneer at his discretion either the whole or part of the purchase money. If any purchaser fails to comply with the foregoing conditions the Auctioneer may put up again and re-sell any lot in respect of which such failure is made; if upon such re-sale a lower price is obtained for such lot than was obtained on the first sale the difference in price shall be made good by (and a debt due from) the purchaser in default upon the first sale.

(c) Where an agent purchases on behalf of an undisclosed client such agent shall be personally liable for payment of the purchase price to the Auctioneer and for safe delivery of the lot to the said client.

3.—(a) The Auctioneer reserves the right to bid on behalf of Clients and Vendors, but shall not be liable for errors or omissions in executing instructions to bid.

(b) The Auctioneer reserves the right before or during a sale to group together lots belonging to the same Vendor, or to split up and/or to withdraw any lot or lots.

4.—Each lot shall be at the purchaser's risk from the fall of the hammer and must be paid for in full before delivery and must be taken away at his or her expense by a purchaser in the United Kingdom within seven days of the date of sale and by a purchaser overseas within a reasonable time. If any purchaser fails to pay in full for any lot within the said time such lot may at the Auctioneer's discretion, be put up for Auction again or sold privately; if upon such re-sale a lower price is obtained for such lot than was obtained on the first sale the difference in price and the expense of such re-sale shall be made good by (and a debt due from) the purchaser in default upon the first sale.

5.—The Auctioneer shall not be liable for any default of the Purchaser or Vendor.

6.—(a) Unless otherwise indicated each lot is sold as genuine and properly described.

(b) If after the sale the purchaser of a lot shall prove it to be not genuine or wrongly described the purchaser shall be at liberty to reject the lot provided he or she—(i) being within the United Kingdom within seven days or being overseas within a reasonable time of the date of the sale give notice in writing to the Auctioneer of intention to question as the case may be the genuineness or description of the lot, AND (ii) within thirty days of the date of the sale (or, in exceptional cases, such longer time as may in the Auctioneer's discretion be allowed for expertising) returns such lot to the Auctioneer. NOTE: The onus of proving a lot to be not genuine or wrongly described lies with the purchaser. Proof of the inability of an Expert Committee to express a definite opinion will not discharge such onus.

(c) No lot may be rejected if subsequent to the sale it has been immersed in water or treated by any other process unless the Auctioneer's permission to subject the lot to such immersion or treatment has first been obtained.

(d) Lots stated to contain collections and/or undescribed stamps must be taken with all faults and errors as to numbers (if any), and by reason of the foregoing a purchaser of any such lot shall have no right to reject the same.

VIEWING TIMES FOR THIS SALE

Lots may be viewed on Thursday and Friday, preceding day of Sale between 10 a.m. and 4 p.m.; Saturday 10 a.m. and 12 noon, and on day of Sale, 10 a.m. and 1 p.m.

SALES
2956-2957

Catalogue

AT
1.30 P.M.

WITH TWENTY PHOTO-PLATES

of

The Valuable Collection

of

**COMMONWEALTH CLASSICS
ON COVERS**

Offered by order of W. S. Davy, Esq., of Wilmslow, Cheshire

including

**AFRICA, BRITISH NORTH AMERICA,
BRITISH WEST INDIES,
GREAT BRITAIN, OCEANIA, etc.**

To be sold by Auction on
**Monday and Tuesday,
MAY 9th and 10th, 1960**
at 1.30 p.m. each day

by

H. R. Harmer Ltd.

International Stamp Auctioneers

41, NEW BOND STREET, LONDON, W.1.

Telegrams: "*Phistamsel, Wesdo, London.*"

Telephone: *MAYfair 0218*

C. H. C. Harmer, G. F. Guthrie, I. J. Glassborow, Auctioneers.

Price — Five Shillings

The number of stamps or pieces in the Lot is given in brackets at the end of the description or shown in brackets at the end. They are listed according to Stanley Gibbons' 1960 Part I Catalogue.

Estimated Value

The quotations in the right-hand column of this Catalogue are our estimates of the approximate market value.

ARRANGEMENT OF CATALOGUE

FIRST DAY — Monday, May 9th, 1960

British Commonwealth on Covers

Lot Nos.	1-33	Antigua to British Guiana.
„	34-69	CANADA.
„	70-106	CAPE OF GOOD HOPE.
„	107-126	Ceylon to Ghana.
„	127-171	GREAT BRITAIN with "Used Abroad."
„	172-206	Grenada to Malta.

SECOND DAY — Tuesday, May 10th, 1960

British Commonwealth on Covers (contd.)

Lot Nos.	207-261	MAURITIUS to New South Wales.
„	262-310	New Zealand to St. Helena.
„	311-366	St. Lucia to Western Australia.

FIRST DAY OF SALE: MONDAY, MAY 9th, 1960

AT ONE-THIRTY P.M. PRECISELY.

The quotations in the right-hand column of this Catalogue are our estimates of the approximate market value.

Lot No.	ANTIGUA	Est. Value
1	1863-67, rough perf. 14-16 1d. vermilion, S.G. 7, used to Nova Scotia on "Antigua Prices Current" dated Aug. 10th 1868, well tied, showing despatching and receiving pmks. (see photo-plate I) (1)	E £15 to £20 21
2	— ditto 6d. green, S.G. 8, a vertical strip of three, vertical pair and single, used on front of cover to London, dated "LONDON FE 28 65" 1868 (6)	E £12 3
3	— ditto 6d. yellow-green, S.G. 10, a very fine horizontal pair used on letter wrapper to Liverpool, well tied with light "AO2" pmk., backstamped "ANTIGUA OC 11 71" and "LIVERPOOL 28 OC 71" (see photo-plate I) 1868 (2)	E £15 21
4	— ditto, another horizontal pair used on large piece to Liverpool with scarce "A18" cancellation, dated "ENGLISH HARBOUR JY 27 71" and "LIVERPOOL AU 11 71" (see photo-plate I) (2)	E £10 15 1/2
5	1872, CC, perf. 12 1/2 6d. blue-green, S.G. 15, a superb horizontal pair, well tied with "A18" pmk. to letter wrapper to Liverpool, dated "ENGLISH HARBOUR JA 28 74" and "LIVERPOOL 14 FE 74" (see photo-plate I) 1868 (2)	E £12 23
6	— ditto, ditto 6d. blue-green, a horizontal pair and single, well tied with "AO2" pmk. on blue oblong envelope to Barbados, dated "ANTIGUA-AU 19 76" and "BARBADOS AU 21 1876" (3)	E £10 25

BAHAMAS

7	1863-80, CC, perf. 14 1d. scarlet-vermilion, S.G. 33, a very fine horizontal strip of five and single used on registered envelope to Halifax N.S., well tied with light "AO5" cancellation, and dated "NASSAU JU 30 81", "ST. JOHN'S CANADA JY 12 81" and "HALIFAX N.S. JY 13 81" (see photo-plate I) (6)	E £30 60
---	---	---

BARBADOS

8	1852-58, blued paper 4d. brownish red, large margins three sides showing portion of adjoining stamp at right but shaved at bottom, and rough perf. 1d. blue, used together on neat envelope to Antigua (see photo-plate I) (2)	E £12 11
9	1856-57 1d. blue, used on "Mercantile Intelligencer" to Trinidad, another on letter wrapper to St. Lucia, both slightly cut-into one side, and a fine copy on envelope to Jamaica (3)	E £8 8 1/2
10	— 1d. blue, a horizontal pair, slightly stained and touched at top-left side, and a fine single copy from bottom of sheet, all used together on letter wrapper to Dominica, backstamped "BARBADOES FE 27 1858" and "DOMINICA 28 FE 1858" (3)	E £10 11 1/2

Lot No.	BARBADOS (continued)	Est. Value
11	1858 6d. deep rose-red, S.G. 11a, a little cut-into at top, used on letter wrapper to Plymouth, cancelled "BARBADOES JU 25 1860", and "PLYMOUTH JY 13 60"; and 1/- brown-black, a slightly creased but large-margined copy on letter wrapper to London, dated 1860 <i>Friedman</i> . (2)	15 1/2 12 E £20
12	1860, pin-perf. 14 1d. pale blue, fine used on slightly damaged "Mercantile Intelligencer" to Trinidad, pmkd. "BARBADOES OC 18 1860"; and another 1d. blue used on large part entire to St. Lucia. <i>Isleton</i> . (2)	10 E £10
✓ vk 1/2 13	1861-70, rough perf., an opened for display Officer's envelope, addressed to St. Helena, franked with 3d. (4), 1d. (5), 4d., 6d. (2), dated "BARBADOS AP 25 69" and "LONDON PAID" mark. <i>Lymon</i> (12)	40 E £15 to £20
ag 14	Various perf. Britannia types, chiefly the 1861-70 rough perf. issue, comprising 6d. (7), 1/- (strip of three and three singles), all used on ten entires <i>Bodily</i> . (10 entires, 13 stamps)	87 1/2 E £50
v8 15	1873, clean-cut perf. 1/- black, a very fine horizontal pair used on neat envelope to London, dated 1873. (2)	(14) E £10
16	1874 1d. deep blue, used on local envelope and 1875-78, perf. 14 4d. red, 6d. chrome-yellow on separate entires, former to Ireland, latter to Demerara <i>Belton</i> (3)	16 1/2 E £15
va 17	1875-78, perf. 12 1/2 1/- violet, an attractive well centred pair, used on letter wrapper to London, dated "BARBADOES AP 10 1877" and "LONDON 28 AP 77". <i>Lee</i> (2)	18 1/2 E £12
18	— Perf. 14 1d. dull blue and 4d. red, used on envelope to California with United States 5c. brown Postage Due stamp. The envelope is pmkd. "BARBADOS MY 9 81", "NEW YORK MAY 27 81" and "DUE 5 CENTS" mark in circle (see photo-plate I). <i>Frazier</i> . (3)	16 1/2 E £15
19	— ditto 1d. dull blue, bisected diagonally and used as 1/2d. on front of local entire, S.G. 73a, well tied and very fine (see photo-plate I). <i>Mick</i> . (1)	33 E £20
v9 20	— ditto, the scarce 3d. mauve-lilac, S.G. 75, very fine used on envelope (flap missing) to London, well tied, dated "BARBADOS JA 24 81". (1)	(16) E £12
BECHUANALAND		
21	1891-94 4d. green and purple-brown, bisected vertically and used as 2d. on Official buff envelope and well tied with circular "PALAPYE STATION 22 No 99" initialled by the postmaster below stamp, uncatalogued. With "Royal" certificate (see photo-plate I). <i>Leafe</i> . (1)	44 E £20 to £30
BRITISH COLUMBIA		
22	1860, PERF. 2 1/2d. REDDISH ROSE, A SUPERB HORIZONTAL STRIP OF THREE, LIGHTLY PMKD. "4" (Yale) in oval bars and used on envelope to Liverpool with United States, 1861-66 24c. purple. The envelope is back-stamped "GENERAL POST OFFICE 2 SEP 1865 BRITISH COLUMBIA", "LIVERPOOL OC 15 65". The front shows "SAN FRANCISCO SEP 11", "N. YORK BR PKT OCT 4" and "PAID" in oval. Portion of cover bearing the adhesives has been cut-out and replaced and the stamps have been lifted and hinged (see photo-plate II). <i>Lee</i> . (4)	130 E £100
23	1865, perf. 5c. rose, showing sheet margin at top and interval margin at right sides, lightly pmkd., and with circular "VICTORA AUG 15 1868" and "NEW WESTMINSTER AUG 15 1868" (see photo-plate II). <i>Lee</i> . (1)	52 1/2 E £30
24	— ditto 5c. rose, slightly damaged upper-right corner, used on local envelope and tied with complete "NEW WESTMINSTER POST OFFICE BRITISH COLUMBIA" in blue double line oval and backstamped "GENERAL POST OFFICE 11 MAY-7 BRITISH COLUMBIA" in blue double lined circle (see photo-plate II). <i>Lee</i> . (1)	36 E £20

Lot No.

BRITISH COLUMBIA (continued)

Est. Value

- 25 1865, perf. A Wells, Fargo 10c. green, embossed envelope franked with British Columbia 5c. rose, United States, 1861 12c. black and "BLACK JACK" 2c., all well tied. The envelope is addressed (large part has been erased) to London and shows Wells, Fargo, New York and London pmks., and in MS. "recd 29/8/66" (see photo-plate III) 180/ton (4) E £50 to £70 77 1/2
- 26 1867 3d. pale blue, a horizontal strip of three (right-hand stamp has damaged perfs. at right) just tied to envelope to Liverpool, the strip is superimposed with a fine horizontal pair of United States 1861 12c. black, cancelled with the split cogwheel obliteration. Full despatching and receiving pmks. are shown, comprising "GENERAL POST OFFICE 26 JUNE 1866 BRITISH COLUMBIA", "SAN FRANCISCO JUL 2", "NEW YORK BR. PKT. JUL 25" and "LIVERPOOL 4 AU 66". The stamps have been cut from envelope, hinged and replaced. Accompanying the lot is a letter from H. C. Hitt, dated Nov. 9 1930, confirming the genuineness of the cover. This is the same correspondent as lot 22 (see photo-plate III) 180/ton (5) E £70 115
- 27 — 3d. pale blue, imperf. margin at left torn irregularly, tied to blue envelope to San Francisco with light red "NEW WESTMINSTER POST OFFICE BRITISH COLUMBIA" in double line oval, together with a copy of United States, 1861 10c. green with clear "SAN FRANCISCO SEP 1" pmk. tying stamp to cover (see photo-plate VI) 1800k (2) E £40 36
- 28 A Wells, Fargo embossed 3c. green envelope to London, franked with British Columbia, 1868-71, perf. 14 5c. pale red, and United States 1870-71 3c. green. The envelope shows full cancellations, including Wells, Fargo, New York, London, and over the British Columbia stamp "Great Britain and Ireland" in two straight lines in blue (see photo-plate IV) 180/ton (3) E £60 to £80 110

BRITISH EAST AFRICA

- 29 1890, on Great Britain 1/4a. on 1d. (horizontal pair), 1a. on 2d. and 4a. on 5d., all very fine used on buff envelope to Berlin and tied with "ADEN JUL 29 90" and backstamped "Bestellt vom Postamte 46 13.8.90" (see photo-plate VIII) Argyl (4) E £20 42

BRITISH GUIANA

- 30 1852 4c. BLACK ON DEEP BLUE, S.G. 10, WONDERFUL COLOUR FOR THIS STAMP, good margins three sides, touched at top, but showing black outer frame, well tied with "DEMERARA FE 14 1853" to outer letter sheet to "BERBICE", backstamped "BERBICE FE 16 1853" (see photo-plate IV) (1) E £100 to £125 260
- 31 1853-59 4c. blue, S.G. 19, good margins all round and fine used on large part wrapper, tied with "DEMERARA MR 14 1854" pmk. (see photo-plate IV) (1) E £20 to £30 27 m
- 32 1860 12c. grey-lilac, S.G. 37, a superb horizontal pair used on blue envelope to London and tied with "AO3" pmk., backstamped "DEMERARA OC 23 60" and "LONDON NO 16 60" (2) E £10 10
- 33 Four entires franked with early perf. Ship type, comprising 2c. (5) addressed to Bermuda, a pair to Berbice, a single 4c. to Berbice, 24c. to England and three other envelopes bearing 1881 2c. on 24c., 1882 1c., 2c. (S.G. 156, 162, 165) (7 entires, 12 stamps) E £30 46

CANADA

- 34 1851, laid paper 3d. orange-vermilion, and 1852-57, thin wove paper 3d. red, both slightly damaged, used (hinged) on envelope to Buffalo, pmkd. "GUELPH MR 2 (in MS.) 1852" and "HAMILTON MR 4 1852", also "CANADA PAID 10 Cts" mark (see photo-plate IV) (2) E £20 22
- 35 — ditto 6d. slate-violet, used on complete double letter sheet to New York, dated July 24th 1851, large margins three sides, outer frame touched at top and slight crease at right, well tied with "MONTREAL JY 24 1851" in red, curved "CANADA" and "PAID" marks (see photo-plate IV) (1) E £30 31

Lot No.

CANADA (continued)

Est. Value

36	1851, laid paper, another copy on letter wrapper from same correspondence, stamp in similar condition but not creased, but tied with "MONTREAL SE 24 1851" (see photo-plate IV) (1)	30 E £35
37	1852-57, thin wove paper 3d. red, a large-margined copy, well tied with target pmk. to buff envelope to Stanstead, pmkd. "MELBOURNE U.C.", backstamped "STANSTEAD" and "GRAND TR'K R. WAY DEC 16 1856" (see photo-plate V) 1 book (1)	20 E £20
38	— Medium wove paper 3d. deep red, large margins and from top of sheet, used on letter wrapper to Kingston, pmkd. "BYTOWN SEP 26 1855" on front and "KINGSTON" and "STEAMBOAT LETTER MONTREAL" on back (see photo-plate V) 1 pack (1)	21 E £25
39	Five entires, each franked with an imperf. 3d., two with blue pmks., but three slightly cut-into 1 ea. (5)	72½ E £50
40	1852-57, thick hard wove paper 6d. grey-lilac, S.G. 16, slightly cut-into at bottom-right, otherwise with large margins, used on buff envelope (flap removed) to Windsor, Vermont, dated "MONTREAL" cancellation at lower-left corner of cover (see photo-plate V) (1)	E £30
41	1855, thin wove paper 10d. bright blue, S.G. 20, a beautiful copy, extremely fine used and tied to blue envelope to England, pmkd. "HAMILTON JA 5 1857" and "PAID JA 19 1857" (see photo-plate V) 1 book (1)	170 E £75 to £100
42	— ditto 10d. dull blue, S.G. 20a, has nick lower-left corner, otherwise with large margins, well tied to slightly stained envelope to London, pmkd. "QUEBEC DEC 5 1857" and "LONDON DE 21 57" 1 book (1)	25 E £15
43	1857 7½d. deep yellow-green, S.G. 22a, used on envelope to London (part of address erased) and well tied, pmkd. "HAMILTON JU - 1859" and "LONDON JY 6 1859". The stamp has a nick touching frame upper-left corner, otherwise with small to large margins, showing part of adjoining stamps at left. 1 ea. (1)	46 E £15
44	— ½d. deep rose, S.G. 23, very fine except for nick lower-left corner, hinged and tied to large part "Printed Circular" dated "WOODSTOCK JA 20 1859" (1)	1 E £7
45	1858-59, perf. 11½ 3d. red, S.G. 26, an exceedingly fine copy with sheet margin at top (centred slightly to right), used on neat envelope with enclosure, dated 1859 (see photo-plate V) 1 pack (1)	26 E £30
46	— ditto, another fine copy used on buff envelope to Port Perry, well tied with "21" in rings and pmkd. "MONTREAL MR 19 1859" 1 book (1)	15 E £15
47	— ditto 6d. slate-violet, S.G. 27a, slightly creased, but a well-centred copy used on blue letter wrapper to New York, pmkd. "HAMILTON NY 18 1859" and "CANADA PAID" mark in red (see photo-plate V) (1)	E £40 to £50 110
48	1859 1c. deep rose, a vertical strip of five of wonderful deep colour, lightly pmkd. and well tied to buff envelope to Kingsville, despatching and receiving pmks. of 1860 (see photo-plate V) 1 ea. (5)	25 E £30
49	— 1c. rose, a horizontal strip of five on white envelope, fine and from same correspondent (5)	E £20 15
50	— 1c. rose, a strip of three and pair used on buff envelope, a single copy on white envelope and twelve copies of the 5c. red used in nine entires 1 book (18 stamps, 11 entires)	44 E £30
51	— 5c. red, used on large part registered cover to Ottawa with 1864 2c. rose-red, centred to bottom-left, both lightly pmkd. and well tied, dated 1867 (see photo-plate V) (2)	44 E £25

Lot No.

CANADA (continued)

Est. Value

52	1859 5c. red, used on envelope to Boston with large "Cents" 1c. red-brown, both well tied and dated 1868 (see photo-plate V) <i>lea</i> (2)	E £20	18
53	-- 10c. black-brown, perfs. two sides, imperf. edges at bottom and left, penmarked with cross and tied by pmk. to envelope to Maryland, pmkd. on front "QUEBEC JY 12 1859", "SAUVEUR-DE-QUEBEC JY 12 1859" and on reverse "QUEBEC JY 12 1859", "MONTREAL JY 13 1859" (see photo-plate V) <i>mick</i> (1)	E £30	28
54	-- 10c. six copies, various shades, all used on separate envelopes and mostly in fine condition <i>Boston</i> (6)	E £30 to £40	92 1/2
55	-- 12 1/2c. various shades, six copies, five on envelopes, other on letter wrapper <i>lea</i> (6)	E £25	22 32
56	-- 17c. deep blue, two very fine copies, lightly pmkd. and used on front of envelope, dated 1865 <i>book</i> (2)	E £10	18
57	1868-78 1c. red-brown, a well-centred horizontal strip of three, lightly pmkd., with concentric circles and well tied to yellow envelope to Toronto, dated June 1868 (see photo-plate V) <i>book</i> (3)	E £12	27
58	-- 2c. bluish green, used on yellow envelope with 1869 1c. orange-yellow well tied and pmkd. "MONTREAL AU 10 69" <i>book</i> (2)	E £3	11
59	-- 2c. deep green, 6c. yellow-brown, and small "Cents" type 3c., all used together on registered envelope to Alfred, Maine, dated 1871 (see photo-plate VI) (3)	E £10 to £20	28
60	-- 3c. brown-red, used on envelope with Nova Scotia 10c. scarlet, addressed to Annapolis, dated 1868 (see photo-plate IV) <i>scandin</i> (2)	E £20 to £30	155
61	-- 3c. brown-red on laid paper, used on large part buff envelope, well tied and dated 1868 <i>book</i> (1)	E £10	7
62	-- 6c. blackish brown, used on envelope to Michigan and a damaged buff envelope franked with 2c. bluish green, and 6c. yellow-brown, addressed to England (3)	E £8	11
63	1873-78 5c. olive-green, two copies used on separate envelopes, one slightly stained but tied with blue cancellation, other well tied with "HALIFAX SP 19 76" <i>book</i> (2)	E £12	20
64	<i>via</i> (64) <i>ECF</i> 1869 1c. deep orange, used on neat envelope (part of flap missing), well tied with "9" (Kingston) combined type cancellation, pmkd. lower-left corner "KINGSTON SP 18 69" (see photo-plate VI) (1)	E £20	24
65	-- 1c. orange-yellow, used on envelope and tied with "12" in two rings, pmkd. "ST. CHATHARINES WEST JY 29 70" <i>book</i> (1)	E £10	6
66	-- 1c. orange-yellow, used on "Leeming & Cowie's Weekly Market Report" to London C.W., pmkd. on reverse "LONDON AU 2 69" <i>book</i> (1)	E £10	6 1/2
67	1870-88 1c. bright yellow, bisected diagonally and used on "The Railway News" dated Nov. 4 1897, the bisect is well tied with "WELSFORD NO 8 97", very fine and rare (see photo-plate VI) <i>book</i> (1)	E £75 to £100	145
68	A Wells, Fargo 6c. red embossed envelope to London, franked with small "Cents" type 6c. yellowish brown, tied with "For Great Britain and Ireland" in two straight lines in blue, also Wells, Fargo, New York and London cancellations, marked in MS. "recd 5/6/72" (see photo-plate II) <i>mick</i> (1)	E £50 to £60	57 1/2
69	Various, comprising large "Cents" type 3c., 12 1/2c. (2) and a number of small "Cents" types, including shades, all used on twenty-seven entires (48 stamps, 27 entires) <i>book</i> (4)	E £25	55

CAPE OF GOOD HOPE

70	Four pre-stamp entires with different markings dated 1843, 1846, 1851 and 1853 <i>book</i> (4)	E £5	16
----	--	------	----

Lot No.

CAPE OF GOOD HOPE (continued)

Est. Value

- | | | |
|----|--|----------------------------------|
| 71 | 1853, paper blued 1d. deep brick-red, a block of four of very deep colour, tied to envelope to London, good to very large margins all round, pmkd. "CAPE TOWN JA 21 1854" and receiving pmk. of "27 FE 1854" (see photo-plate VI) <i>27</i> (4) | <i>80</i>
E £50 |
| 72 | — ditto 1d. deep brick-red, a block of four, two stamps slightly cut-into, large margins at places showing portion of adjoining stamp at one side, used on letter wrapper to Cape Town, obliterated on reverse "GRAHAMSTOWN OC 23 1855" and "CAPETOWN OC 27 1855" (see photo-plate VI) . (4) | <i>30</i>
E £25 |
| 73 | — ditto 1d. deep brick-red, a pair, large margins, except at one corner, 4d. blue, a block of four with margins, but slightly creased, and a single copy touched at bottom, all used together on complete double letter sheet from Beaufort to Cape Town, 1/10d. rate. The letter is dated 25 Nov. 1853 (see photo-plate XI) (7) | <i>95</i>
E £40
to £60 |
| 74 | — ditto 1d. pale brick-red, a fine copy used on Soldier's envelope to England, pmkd. "PORT ELIZABETH JY 13 1858", "CAPE TOWN JY 17 1858" and "TOPSHAM AU 22 58" (see photo-plate VII) (1) | <i>27</i> E £15 |
| 75 | — ditto 1d. brick-red (2) and 4d. blue, all slightly cut-into, used on envelope to Edinburgh pmkd. on reverse "CAPE TOWN JA 29 1858", "CAPE PACKET MR 10 1858" and "EDINBURGH MR 11 1858" (3) | <i>11</i> E £12 |
| 76 | — ditto 4d. blue, a block of four, touched at portion of one side, otherwise with good to large margins, used on large part of front of wrapper <i>1800k</i> (4) | <i>16</i> E £15 |
| 77 | 1853 to 1855 4d. blue, a pair and six single copies used on seven local wrappers, condition fine to very fine <i>30</i> (8-stamps, 7 entries) | <i>31</i> E £20 |
| 78 | 1855-58 1d. pale rose, used on soiled Soldier's envelope (flap partly missing) to England, showing despatching and receiving pmks. of 1864 <i>1800k</i> . (1) | <i>10</i> E £10 |
| 79 | — 4d. blue, two slightly cut-into copies, used on front of letter wrapper with two copies of the rectangular 1d. rose-red <i>1800k</i> (4) | <i>24</i> E £15 |
| 80 | — 6d. pale rose-lilac, large margins and well tied to slightly damaged envelope to England, pmkd. on reverse "PORT ELIZABETH JU 17 1861", "CAPE TOWN JU 20 1861" and "TIVERTON JY 31 61" (1) | <i>15</i> E £15 |
| 81 | — 6d. rose-lilac, two copies, used at upper-right and lower-left corners of envelope to London, cancelled on reverse "CAPE TOWN DE 19 1861" and on front "LONDON JA 27 62" (2) | <i>18 1/2</i> E £15 |
| 82 | — 6d. slate-lilac, large margins and used on letter wrapper to Cape Town, lightly cancelled <i>1800k</i> (1) | <i>22</i> E £10 |
| 83 | — 6d. slate-lilac, possibly the slate-purple shade, a pair with large margins three sides, shaved at other, used on envelope and tied with rather heavy cancellation, pmkd. "CAPE TOWN NO 9 1863" and "BIRKENHEAD DE 25 63" (see photo-plate VII) (2) | <i>42</i>
E £30 |
| 84 | — 1/- bright yellow-green, four copies, all slightly cut-into, used on blue envelope to Holland, pmkd. "SWELLENDAM OC 19 1862", "LONDON" transit mark dated "29 No 62", receiving cancellation not legible (see photo-plate VII) (4) | <i>57 1/2</i>
E £30
to £40 |
| 85 | — 1/- bright yellow-green, cut-into at portion of left side, and 4d. blue, close at bottom, both used and tied to registered single letter sheet to Cape Town, pmkd. "GRAAFF REINERT 28 JAN 1860" and "CAPE TOWN FE 1 1860" (2) | <i>12</i>
E £10 |
| 86 | — 1/- deep dark green, shaved at left, large margins other sides, lightly pmkd. and well tied to envelope to England, pmkd. "PORT ELIZABETH NY 15 1863", "CAPE TOWN MY 20 1863" and "LONDON JU 23 63" . (1) | <i>1800k</i>
E £12 |

P2

P3

Lot No.

CAPE OF GOOD HOPE (continued)

Est. Value

132 87	1861, the so-called Woodblock issue, 4d. pale milky blue, an extremely fine copy with large margins all round, and tied to letter wrapper addressed to McMaster & Crump, Graham's Town, backstamped "CAPETOWN Ap 3 1861" (see photo-plate VII) (1)	E £70	330
88	— 4d. pale bright blue, a fine copy with margins all round, lightly pmkd. and well tied to letter wrapper to Cradock, backstamped "ALIWAL NORDT DE 2 1861" and "CRADOCK DE 4 1861" (see photo-plate VII) (1)	E £40	85
89	— 4d. deep bright blue, large margins two sides showing portion of adjoining stamp at left, a trifle cut-into at bottom in centre, hinged and well tied to complete double letter sheet addressed to Henry Crump, Grahamstown, pmkd. "PORT ELIZABETH AP 30 1861" (see photo-plate VII) (1)	E £50 to £70	90
ka 90	1863-64, De La Rue 1d. brownish red, a block of four with small to good margins all round showing portion of adjoining stamp one side, lightly pmkd. and used on letter wrapper to Cape Town, part of address has been cut out, backstamped "RICHMOND NO 19 1864" and "CAPETOWN NO 24 64" (see photo-plate VIII) (4)	E £40 to £50	52½
91	— ditto 1d. brownish red, a slightly stained block of four used on letter wrapper to Port Elizabeth, one stamp cut-into one side, otherwise with small to very large margins all round, cancelled "CAPETOWN SP 20 65" and "PORT ELIZABETH FEB 25 65" (4)	E £20	21
92	— ditto 4d. dark blue, sheet margin at left, large other sides, used on single letter sheet to Colesberg, pmkd. "HANOVER DE 5 1864", receiving date not legible (1)	E £15	17½
fa 93	— ditto 4d. steel-blue group, a block of three, used and tied to envelope to Australia, cancelled "CAPETOWN JA 21 67" and "MELBOURNE AP 15 67": The block has margins all round, but the pair is creased (see photo-plate VIII) (3)	E £30	46
94	— ditto 4d. dark blue, a trifle cut-into, also a pair with large margins three sides, but touched at other, both tied and used on separate letter wrappers and 1/- bright emerald-green, used and tied on slightly damaged envelope to Scotland, cut-into, but scarce on entire, which is dated 1863 (4 stamps, 3 entires)	E £25	27
87 95	— ditto 4d. pale blue, a pair, touched at portion of one side, and 6d. bright mauve, a wonderful colour and with enormous margins showing portion of adjoining stamp at bottom, all tied on slightly damaged envelope to Fort Beaufort, pmkd. "ELANDS PORT JU 21 1865". The entire has been folded which has creased the 4d. pair and the top of the 6d. value in margin only (see photo-plate VII) (3)	E £40	60
96 VQ-96	Four entires bearing rectangular issues, including 1868 4d. on 6d., 1880 narrow "3" on 3d., two pairs, and two amusing Boer War cartoons envelopes (13 stamps, 6 entires)	E £10	17

Mafeking Siege stamps, 1900

97	3d. on 1d. carmine, S.G. 3, used on envelope to Mafeking and well tied with "MAFEKING MR 27 1900" pmk. (1)	E £10
98	3d. on 1d., a vertical pair used on envelope to England, stamps tied with "MAFEKING AP 3 1900" and backstamped "RAMSGATE JU 24 00" (2)	E £15
99	3d. on 1d., a horizontal pair used on slightly damaged envelope to England, tied with Mafeking "MR 27 1900" and backstamped "BARKLY WEST AP 11 00" and "EDEN BRIDGE MY 7 00". The stamps have been cut out and replaced (2)	E £10
100	3d. on 1d., a horizontal strip of four used on neat envelope to England and well tied with "MAFEKING AP 10 1900", three pmks. on reverse, one "LEAMINGTON JU 8 00" (4)	E £15

CAPE OF GOOD HOPE (continued)

Lot No.	Mafeking Siege stamps, 1900 (continued)	Est. Value
101	6d. on 3d. magenta, used on neat envelope to Scotland, pmkd. "MAFEKING MR 26 1900" and backstamped "BARKLY WEST AP 11 00" and "INVERURIE MY 7 00" (1)	E £15
102	1/- on 4d., S.G. 11, used on entire to England, slightly creased but well tied with "MAFEKING MR 30 1900" and backstamped "LEAMINGTON MY 25 00" (1)	E £15
103	Another copy used on envelope to Grahamstown, tied with "MAFEKING AP 2 1900" and backstamped "GRAHAMSTOWN MR 10 00" (1)	E £15
104	1d. pale blue on blue, S.G. 17, a marginal copy from bottom of sheet, very fine used on neat envelope to Mafeking and tied with "MAFEKING AP 12 1900" (1)	31 E £15
105	3d. pale blue on blue, S.G. 19, very fine used on neat envelope to Brickfields, tied with "MAFEKING AP 9 1900" cancellation (1)	27 E £15
106	Another copy used on slightly torn envelope to Mafeking and tied with "MAFEKING AP 10 1900" (1)	30 E £15

CEYLON

107	1857-59, imperf. 1d. blue, two copies, both with margins and showing portion of adjoining stamp, used on slightly damaged letter wrapper to Kandy, and 1867 1d. Prussian blue horizontal strip of three used on mourning envelope, latter not tied (5 stamps, 2 entires)	10 E £8
108	— ditto 5d. chestnut, a beautiful copy with large margins, just tied to single letter sheet from Singapore, dated 26 Jan. 1858 to Western Australia, pmkd. "GALLE STEAMER LETTER MY 18 1858", pmk. on reverse, and at side of stamp Galle Forwarded Agents cachet (see photo-plate VII) (1)	70 E £40 to £50
109	6d. purple-brown, deep rich colour, small to large margins, lightly pmkd. and well tied to envelope to England, dated 1859 (1)	109 E £12
110	6d. purple-brown, two fine copies with margins, used with imperf. 1d. blue, all lightly pmkd. and just tied to single letter sheet to Amsterdam, backstamped "GALLE JA 19 1860 STEAMER LETTER" and "AMSTERDAM 18 2 1860" (see photo-plate VII) (3)	50 E £40
111	Nine entires bearing "Pence" types, including imperf. 10d. orange-vermilion with large margins tied by pmk.; and in MS. "10d. stamped", and other scarce items (16 stamps, 9 entires)	120 E £30 to £40

DOMINICA

112	1877-79, CC, perf. 14 1d. lilac, S.G. 5, a very fine horizontal strip of four used on blue envelope (part of flap missing) to England, "DOMINICA" date stamp on front (4)	36 E £10
-----	---	----------

FALKLAND ISLANDS

113	1868, THE SMALL BLACK RECTANGULAR "FRANK", A SUPERB IMPRESSION ON NEAT CLEAN BLUE FOLDED ENVELOPE TO NOTTINGHAM, bearing "6" mark in red in MS. and on front "FALKLAND ISLANDS JA 3 1876" and on reverse "NOTTINGHAM FE 16 76", very rare (see photo-plate IX) (1)	210 E £250
114	1871, ANOTHER EXAMPLE OF THE SMALL BLACK RECTANGULAR "FRANK" ON CREAM ENVELOPE (small portion at left corner torn) to London, franked "6" in red crayon and pmkd. on front "FALKLAND ISLANDS 1871" (month and date not legible), "LIVERPOOL BR PACKET 28 SP 71" and on reverse: "LONDON SP 29 71" (see photo-plate IX) (1)	155 E £200

Lot No.

FALKLAND ISLANDS (continued)

Est. Value

- 115 1891, half of 1d. red-brown, well tied and very fine used on envelope to England with a horizontal pair of the whole stamp (2½d. rate) pmkd. on front "FALKLAND ISLANDS AU 3 1891" and on back "BRISTOL SP 14 91" (see photo-plate VIII) *Book* (3) 35
E £40
- 116 — Another envelope (part of address cut out) to England, franked with a horizontal strip of three of the 1d. claret, left-hand stamp bisected and well tied, pmkd. on front "FALKLAND ISLANDS FE 12 1891" and on back "LONDON MR 21 91" (see photo-plate VIII) *Book* (3) 20
E £30
- 117 Five envelopes (four registered) bearing Queen issues, containing ½d. to 1/- (six values) to England, no wmk. 1/- to Germany, two other entires, one addressed to Nova Scotia, other to Canada (5 entires, 12 stamps) 52½
E £30
to £40

FIJI

- 118 1872 2c. on 1d. pale blue, S.G. 16, twelve single copies (some defective), used on damaged blue envelope to England and cancelled "Suva 26/8/72" in MS., the reverse is pmkd. "G.P.O. LEVUKA FIJI Au 29 1872" and "LINCOLN NO 21 72". Rare and possibly unique (see photo-plate VIII) *Book* (12) 40
E £40
to £50
- 119 1874, V.R. Gothic 6d. (12c.) rose, S.G. 22, slightly damaged at left, used on envelope to England and tied with light sunburst type cancellation, receiving pmk. on back reads "WINCHESTER DE 13 75" (see photo-plate XI) *Book* (1) 12
E £10
to £20

GAMBIA

- 120 1861, a pre-stamp blue double letter sheet (letter written in French and dated 25 May 1861). The front is pmkd. "BATHURST PAID MY 25 1861 GAMBIA", "PAID LIVERPOOL BR PACKET 11 JU 61" and "LONDON JU 11 61" *Book* (1) 80
E £20
- 121 1866, a blue pre-stamp letter wrapper to Bordeaux in fine condition, pmkd. "BATHURST OC 24 1866", "PAID LIVERPOOL BR. PACKET 10 NO 66" and "LONDON NO 10 66" and "BORDEAUX 11 NOV 66" *Book* (1) 46
E £20
- 122 1869, NO WMK., IMPERF. 6d. BLUE, S.G. 3a, A HORIZONTAL PAIR WITH LARGE MARGINS EXCEPT AT LOWER-RIGHT. The left stamp has been cut in one place by the canceller whilst the right stamp has two small defects in the top margin, traces of crease, excellent colour and fair embossing. The pair which has been lifted is hinged to a complete clean blue linen-lined envelope to Dublin, and bears three impressions of the circular "A GAMBIA SP 15 69" pmk. in red, and is well tied at bottom. Two additional similar pmks., a red crayon "10" and the "PAID LIVERPOOL BR PACKET 28 SP 69" are on front of cover. On reverse is a circular unframed pmk. in black, reading "H & K PACt A SE 29 7 1869" (Holyhead and Kingstown packet). COVERS ARE OF GREAT RARITY, AND THIS ONE IS PROBABLY UNIQUE (see photo-plate X and front cover) *Book* (2) 675
E £500
- 123 1880 4d. brown, S.G. 15, used and just tied with "GAMBIA C SP 30 81" to slightly torn envelope to Manchester, and on reverse Manchester receiving pmk. of 1881 *Book* (1) 22
E £20

GHANA

- 124 1876 1d. blue, bisected and used on neat envelope with a vertical pair of the normal stamp to Accra (2½d. rate). All stamps are lightly pmkd. with the Addah oval seal, and circular "ADDAH D 1 82" is shown at lower-left corner of envelope. With B.P.A. certificate (see photo-plate XI) *Book* (3) 50
E £50
- 125 — 1d. blue, a front of envelope bearing a bisected copy and the two whole stamps with similar cancellation, pmkd. "ADDAH DE 17 82". With B.P.A. certificate (see photo-plate VIII) *Book* (3) 29
E £20
to £30
- 126 1884-89 2d. grey, bisected and used on envelope to Accra, tied with "B27" obliteration and pmkd. "QUITTA JA 31 87". The bisect is slightly stained. With B.P.A. certificate (see photo-plate VIII) *Book* (1) 27
E £20
to £30

GREAT BRITAIN

Lot No.	1840	Est. Value
127	Mulready wrappers, 1d., five showing numbers in Cross, comprising "3", "5", "6", "7" and "8", numbered "A54", "A66", "A64" (3) mostly very fine (5)	28 E £20
128	Mulready wrapper, 1d. (4, one unused), 2d. (3, one unused), envelope 1d. (3, one unused) and 2d. (one unused), fair to fine, some soiled (11)	35 E £10
129	Mulready envelope, 2d. "a195", pmkd. "10" in Maltese cross, slightly soiled but scarce (1)	10 1/2 E £10
130	1d. black, Plate Ia, used on complete double letter sheet with first day "MY 6 1840", good margins, well tied and very fine. With B.P.A. certificate (see photo-plate X) (1)	7 1/2 E £40
131	1d. black, Plate Ia, good margins three sides, but touched at bottom left, well tied to single letter sheet and clearly pmkd. "MY 7 1840" (1)	16 E £15
132	1d. black, two horizontal pairs and eighteen single copies used on complete entires or large pieces, and with May 1840 dates, comprising May 8, 9, 11, 12, 14, 15, 16, 17, 18, 19, 21, 22, 24, 25, 26, 27, 28, 29 and 30, condition fair to very fine majority with margins all round (22)	82 1/2 E £70
133	1d. black, four copies with good margins all round, used on separate entires and dated "MY 9 1840" (2), "MY 29 1840" and "MY 30 1840", fine to very fine (4)	17 1/2 E £15
134	1d. black, Plate Ia, two magnificent copies with large margins, and from bottom of sheet showing part inscription, one lettered T-A, other T-F (see photo-plate X) (2)	57 1/2 E £25
135	1d. black, Plate Ia, worn, fine used and well tied to 1d. Mulready wrapper, pmkd. "JU 7 1840". The wrapper is slightly creased (1)	15 1/2 E £10
136	1d. black, Plate Ia, a horizontal strip of four, lettered JE-JH, with good to large margins all round, and used on large part wrapper dated "MY 15 1840" (see photo-plate XI) (4)	27 E £20
137	1d. black, Plate Ia, a block of four with large margins, well tied to single letter sheet, dated "JU 29 1840" (see photo-plate XI) (4)	67 1/2 E £40
138	1d. black, Plate II, lettered I-A, part sheet margin at left, large other sides, very fine used on circular, dated "MY 22 1840" (1)	E £8
139	1d. black, Plate IV, a very fine copy used on letter wrapper, and tied with rare circular "TANYBWLCH" in black and red Maltese Cross pmk. (see photo-plate X) (1)	E £30
140	1d. black, Plate IV, a horizontal strip of four, lettered PH-PK, close at top, large margins other sides, and tied to large part letter wrapper (4)	E £15
141	1d. black, Plate VI, two copies, used on large part single letter sheet with two copies of the 2d. pale blue, all with margins, but slightly stained, a scarce combination (see photo-plate XI) (2)	E £20
142	1d. black, Plate VII, an exceedingly fine vertical pair with enormous margins all round showing portion of adjoining stamp, just tied to letter wrapper dated "JA 1 1841" (2)	E £15
143	1d. black, Plate IX, a vertical pair, lower stamp close at left, otherwise with large margins, used on large piece with 2d. pale blue, slightly creased (3)	E £10
144	1d. black, Plate XI, lettered C-H, large margins all round and tied to single letter sheet, dated "MR 30 1841", extremely fine but for slight crease (see photo-plate X) (1)	E £25

GREAT BRITAIN (continued)

Lot No.	1840. (continued)	Est. Value
145	1d. black, Plate XI, lettered E-C, close at bottom, small to good margins other sides, tied to letter wrapper dated "AP 5 1841" (1)	E £10
146	1d. black, ten copies used on separate entires, with various "PENNY POST" markings, condition fair to fine (10)	E £20
147	1d. black, three pairs and nine single copies used on ten entires, including two copies used on 1d. Mulready wrapper, condition poor to fine . . . (15 stamps, 10 entires)	E £35
148	2d. blue, two very fine shades, one used on envelope, other on single letter sheet, former Plate I, latter Plate II (2)	E £15
149	2d. blue, a glorious horizontal strip of three, lettered D-H, D-J, large margins all round, showing portions of four adjoining stamps, lightly pmkd. and well tied to double letter sheet (see photo-plate XI) (3)	E £40
150	2d. blue, Plate I, two horizontal pairs, one has defect, and a single copy, all used together on 2d. Mulready envelope to East Indies showing full despatching and receiving pmks. of 1840. With "Royal" certificate (see photo-plate XII) . . . (5)	E £60
151	2d. blue, Plate I, a horizontal pair, lettered EB-EC, large margins and fine used on double letter sheet, dated "OC 20 1840" (2)	E £12
152	2d. blue, a horizontal and vertical pair and two singles, shades, all used on four entires, fair to fine (6 stamps, 4 entires)	E £15
153	1841 1d. red-brown, various used on entires, containing numbers 1 to 12 in Maltese Cross complete, strips of four and some scarce cancellations (64 stamps, 47 entires)	E £15
154	— 2d. blue, large margins three sides, slightly cut-into at bottom, used on letter wrapper and well tied with scarce blue Maltese Cross pmk., pmkd. "TRURO Se 8 1841" in blue and "LISKEARD Se 9 1841" in black (1)	E £10
155	— 2d. blue, three horizontal strips of four and five single copies, used on seven entires, mostly fine (17 stamps, 7 entires)	E £10
156	1850, Archer perf. 16 1d. red-brown, a horizontal pair, centred to top-left, but lightly pmkd. and well tied to neat envelope, dated "EXETER OC 23 1850". With B.P.A. certificate (see photo-plate XI) (2)	E £15
157	1858-64 1d. rose-red, Plate 225, two fine copies, well tied to separate envelopes (2)	E £10
158	1870 1½d. rose-red, error OP-PC, used on blue oblong envelope and well tied. With B.P.A. certificate (1)	E £15
159	1847-54, embossed 10d. brown, fine used on neat envelope to Paris and tied with small circular French pmk. (1)	E £10
160	— ditto 10d. brown, very fine, and 1/- green, slightly cut-into at left, both used on blue double letter sheet from Blackburn to Bombay, cancelled on front "BLACKBURN AP 7 1855" (see photo-plate XI) (2)	E £15
161	— ditto 1/- pale green, a horizontal pair, left-hand stamp touched at bottom, otherwise fine, used on double letter sheet to New Orleans, backstamped "LIVERPOOL JY 13 1850" and on front "PACKET", "21" and "5 CENTS" marks (2)	E £8
162	Various perf. line engraved issues, chiefly 1d., 2d. and ½d. values, and embossed 6d. (5), 10d. and 1/- (2), all used on entires (100 stamps, 57 entires)	E £15
163	1873-80 2½d. rosy mauve, two copies used together on double letter sheet to Paris, one the error of lettered LH-FL, well tied, pmk. a little heavy (2)	E £15

la

44

62 1/2

19 1/2

10

Lot No.

GREAT BRITAIN (continued)

Est. Value

164 Various surface printed issues used on entires, containing several copies of the 4d. on blue safety paper, combination covers, 1862 9d. (2) and R.H. Official ½d. and 1d. (40 stamps, 21 entires) E £12

Used Abroad

165 Malta : A Collection of twenty covers bearing thirty-seven stamps, two with "M" cancellation, others with dated cachets . . . (20 covers, 37 stamps) 31 E £15

166 Gibraltar : A Collection of nineteen entires, franked with twenty-two stamps, including three with "G" obliteration, others with "A26" (19 entires, 22 stamps) 17 E £8

167 Greytown (Nicaragua) : A damaged envelope to England franked with 1/- green, pmkd. "C57", and Nicaragua, 1869-73 2c. blue, both well tied and pmkd. "GREYTOWN FE 16 78" and "NOTTINGHAM MR 16 78" (see photo-plate XII) (2) 28 E £25

168 Tobago : 1856 6d. lilac, used on double letter sheet to England and well tied with clear "A14" cancellation, backstamped "TOBAGO SP 24 1858", "LONDON OC 15 58" and "GREENOCK OC 16 1858" (1) E £10

98

169 Callao (Peru) : Four envelopes with "C38" cancellations, being combination items with Peruvian adhesives (4 entires, 14 stamps) 46 E £20 to £30

170 Argentine : Embossed 5c. envelope bearing additional 15c. blue value, used in combination with Great Britain 1/- green, Plate 12. The Argentine values show dated Buenos Aires pmks., but cancellation on the British adhesive is indecipherable (see photo-plate XII) (3) E £20

171 A Collection of entires Used Abroad, containing three Crimea, "C51", "C35", "C82", "C83", "AO3", etc. (27 entires, 38 stamps) 82 E £30 to £35

GRENADA

172 1890 1d. on 2/- orange and green, S.G. 44, a horizontal strip of three and two singles, and on reverse a pair of the 1887 1d. carmine, all used on registered envelope to London, dated 1891 (7) 31 E £10

HELIGOLAND

119

173 Four envelopes and one postcard, including 1mk. and 5mk. used on separate envelope, former with "Royal" certificate (5) 40 E £15

INDIA

174 1854 1a. red, Die I, a choice horizontal strip of five, a horizontal strip of three and a pair, all of bright colour and very fine used on neat envelope opened for display to Ireland, pmkd. "CALCUTTA OC 11 1854", "LONDON DE 27 1854", and "WEXFORD DE 28 1854" (see photo-plate XII) (10) 35 E £20 to £30

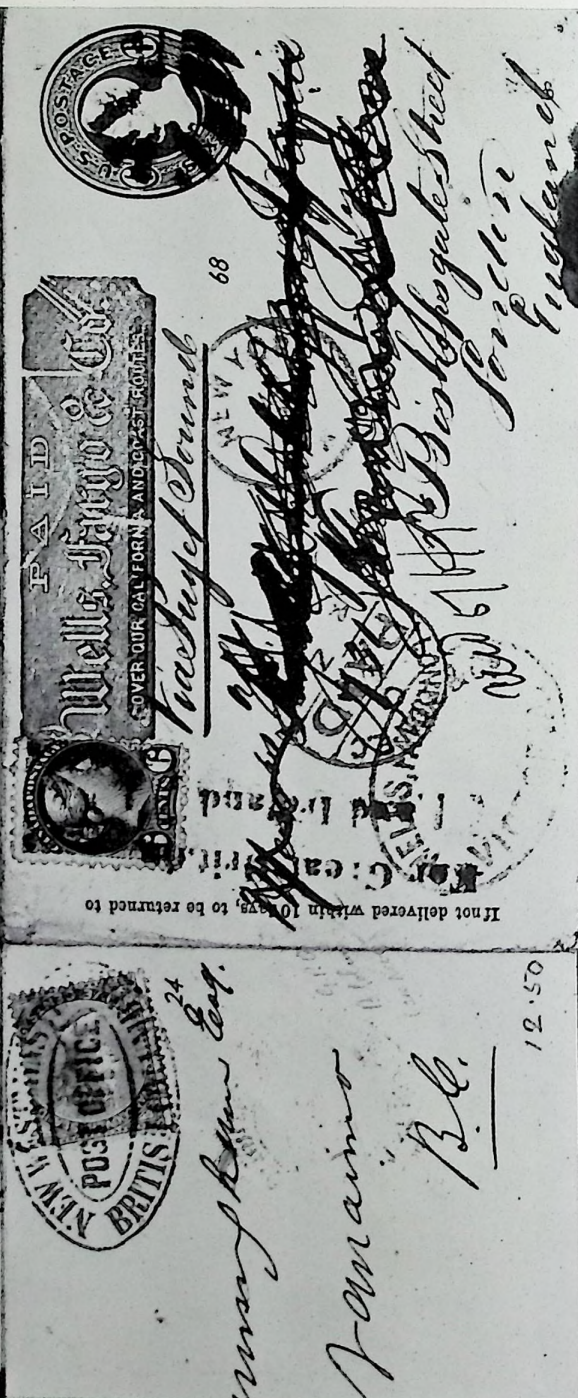
175 — 1a. dull red, Die I, a block of eight (4 x 2), cut-into and used on reverse of envelope to Scotland, the front has corner torn, possibly a stamp or stamps have been removed (8) E £15

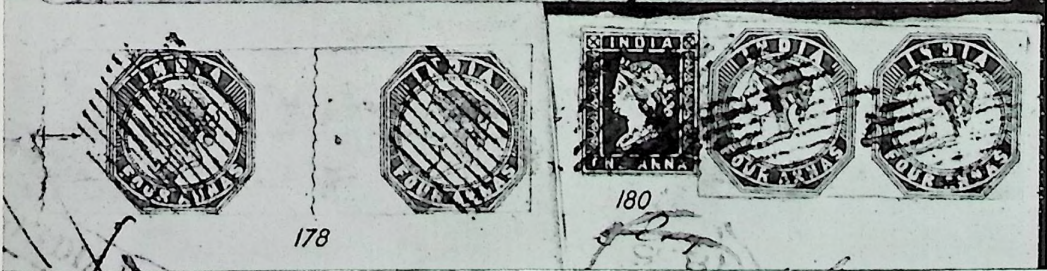
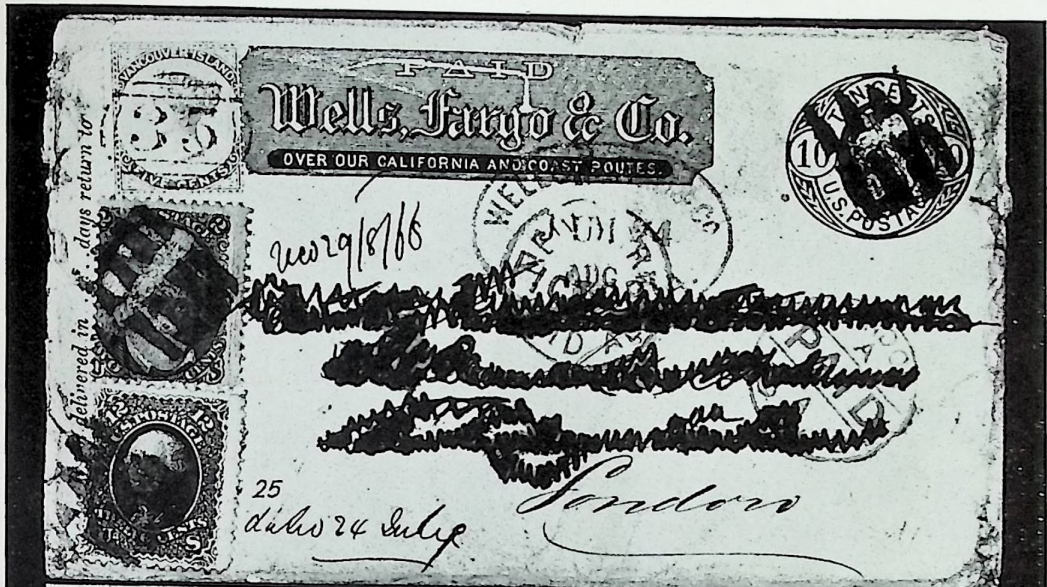
176 — 1a. red, Die III, pointed bust, fine used on neat envelope to Madras and tied (1) E £10

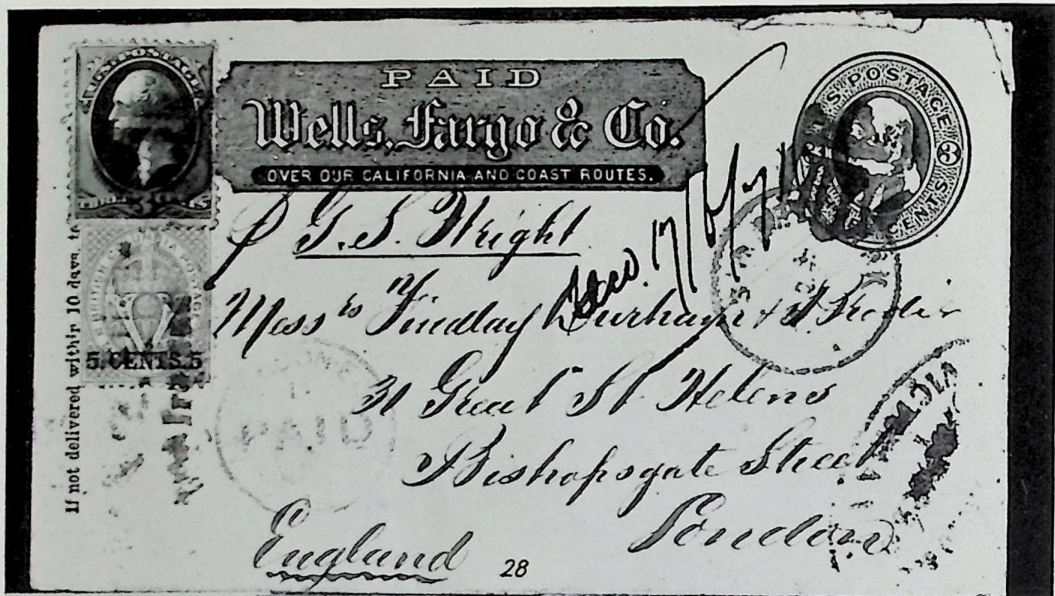
177 — 2a. green, a horizontal strip of four with large margins and fine colour, used on double letter sheet to France, dated 1855 (4) E £12

178 — 4a. blue and red, a horizontal pair, head die II, frame die I, slightly cut-into, but showing blue wavy lines between stamps and at left; red and blue guide lines at left, used on letter wrapper to Venice and tied (see photo-plate III) . . . (2) E £30

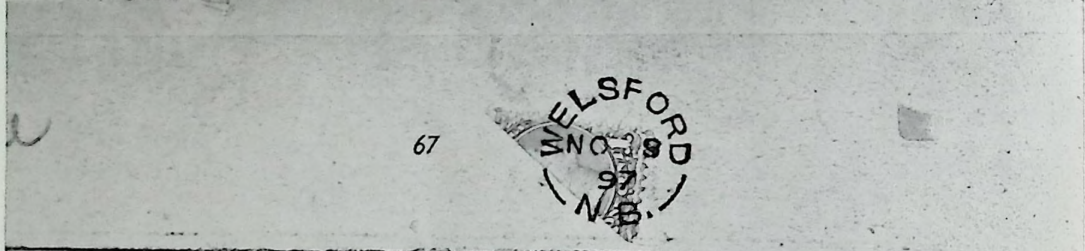




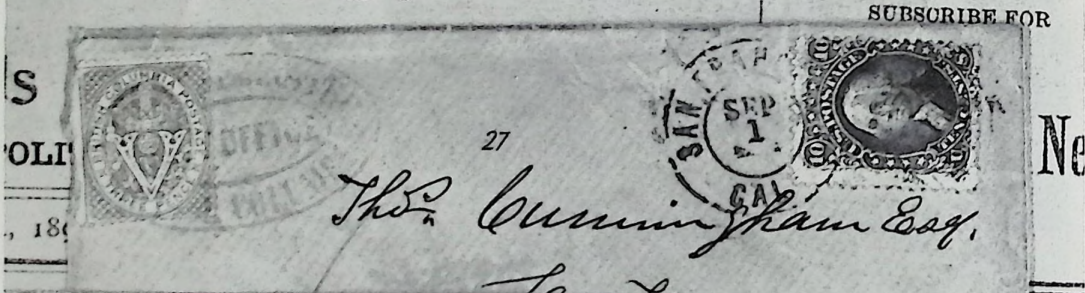








News.



Mail 20 Nov 1863
Paid.
 Mr. Arthur Hopper
 Stanton Hall
 Buntingford
 Cheshire

83

POSTAGE
 ONE PENNY
 CAPE OF GOOD HOPE

Ca. P. & B.
Evon 74
England

84

POSTAGE
 ONE SHILLING
 CAPE OF GOOD HOPE

87

88

de Graaff; Esq.

89

95

POSTAGE
 FOUR PENCE
 CAPE OF GOOD HOPE

W. Hancock Esq.

110

CEYLON
 ONE PENNY

CEYLON
 SIX PENCE

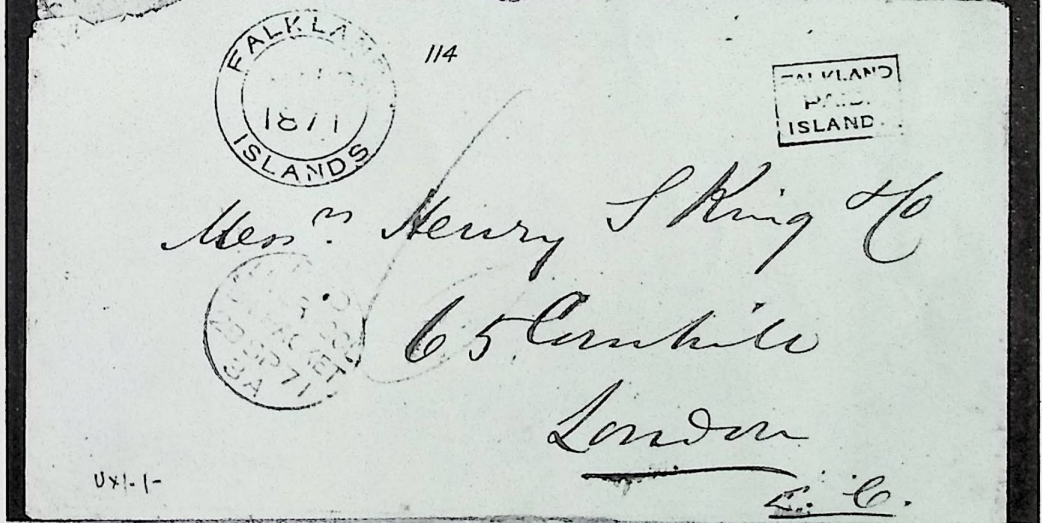
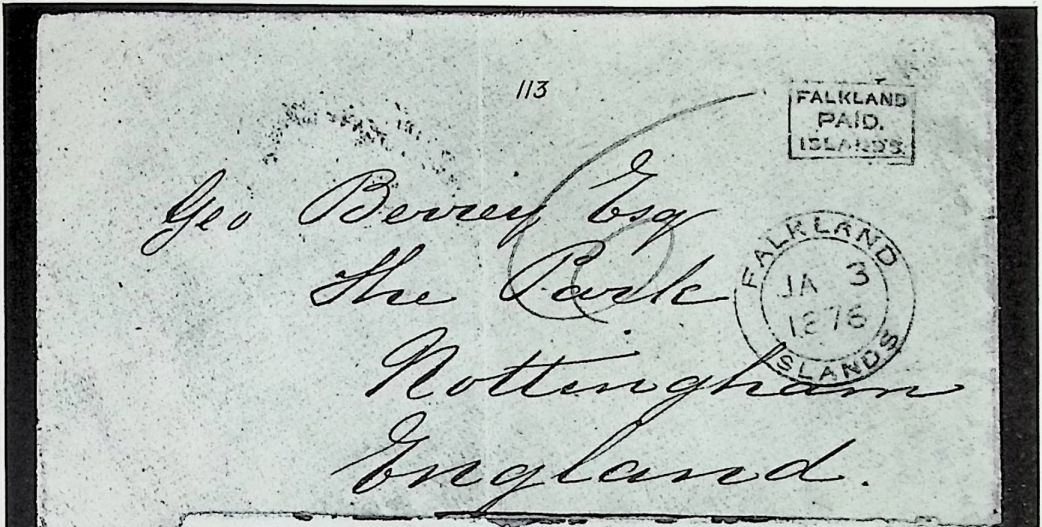
108

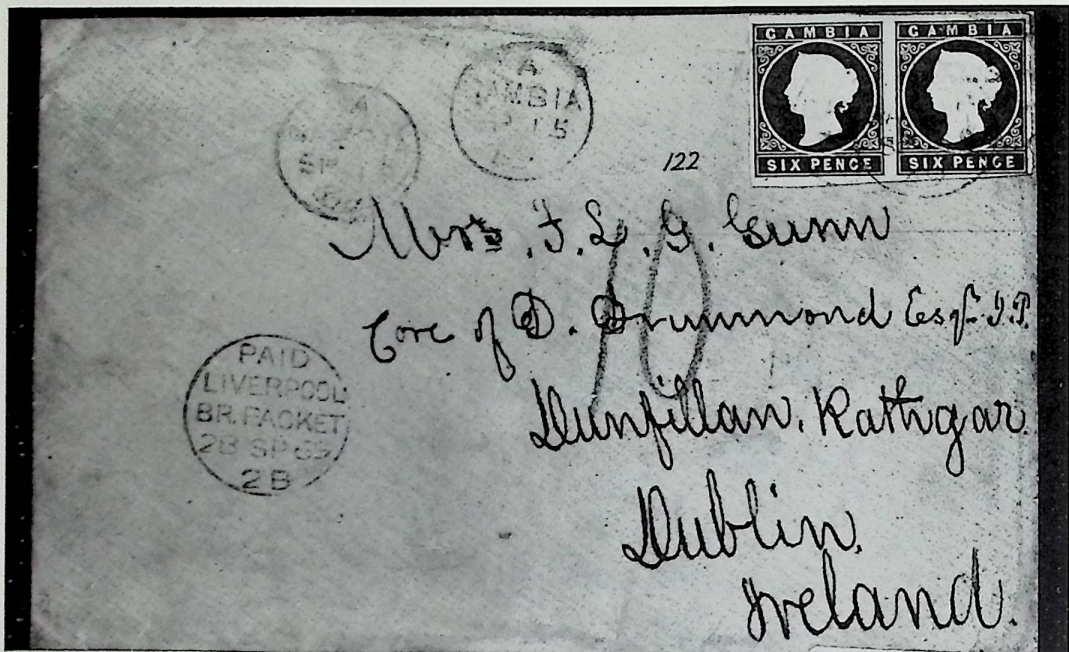
CEYLON
 FIVE PENCE

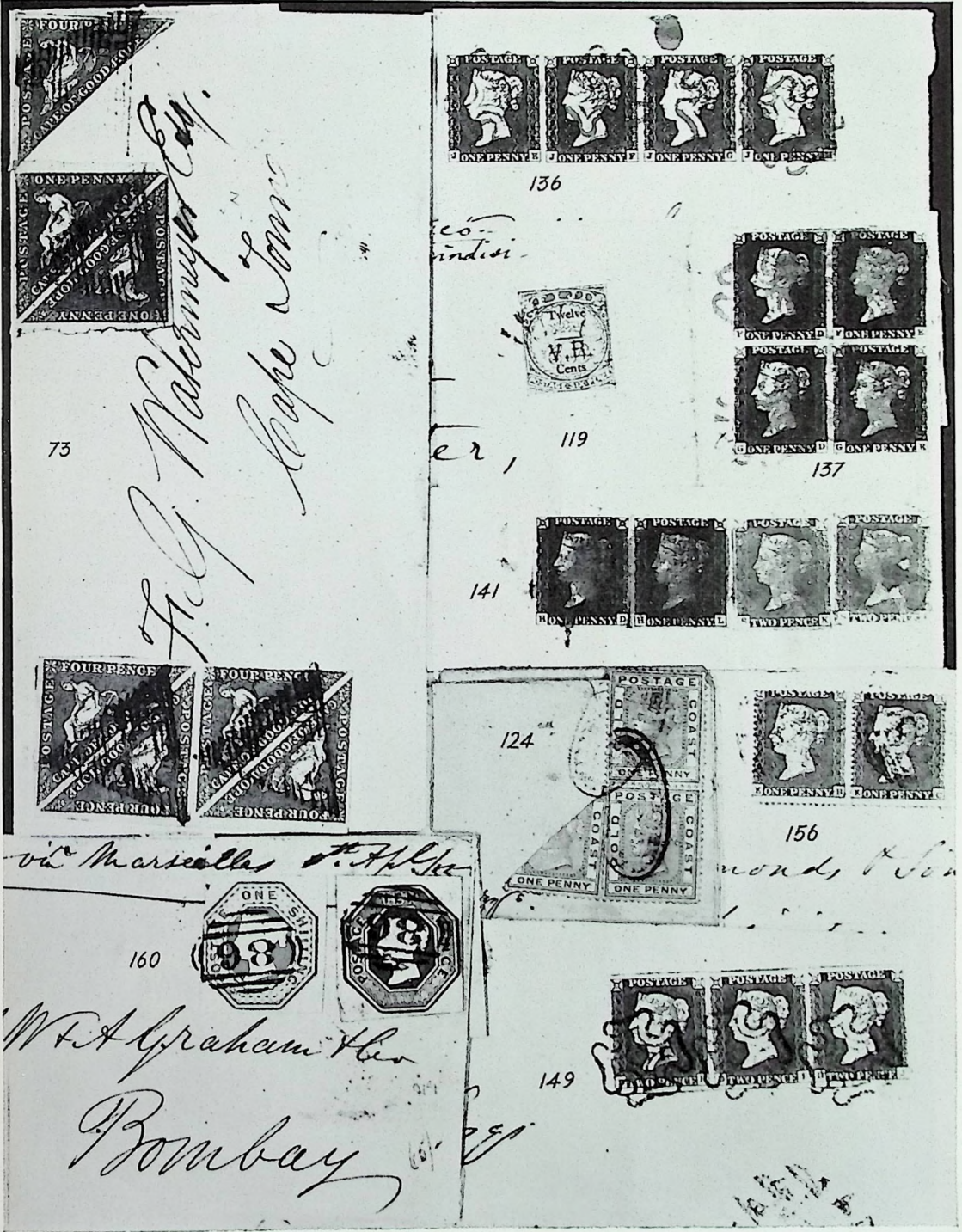
W. Hancock Esq.

Barker Esq.





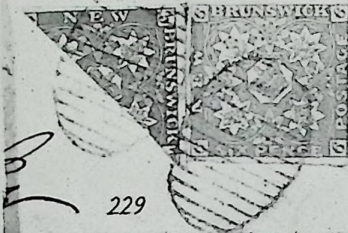








225



229

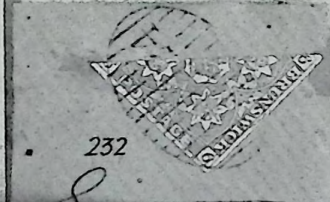
231



222



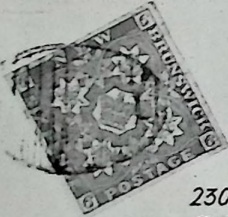
228



232



236



230



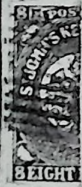
234



241



238



239



W & Co

Messrs R W R Tucker



240



243

Tom McDonald Esq



245



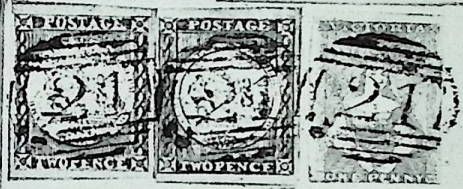
258



257



246



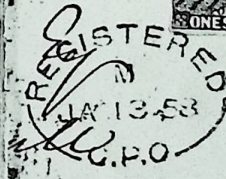
250



259



263



Glynn
Ad. Ad. Ad.



262



264



266



267

age



270

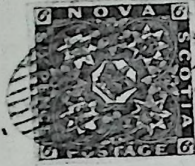
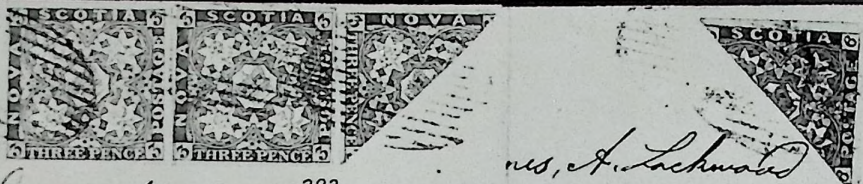


275

Millington
6.1.60
Custom Exp.

Capt George. H. Doty 282

Mrs. A. Lachman 285



283

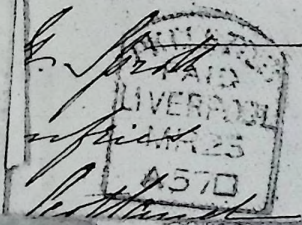


284



292

Cadwell



Mo



294



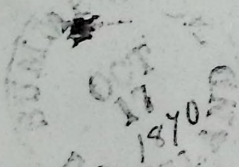
296



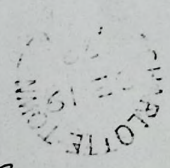
297



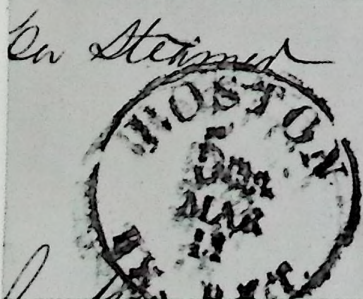
298



300



301



291



General 303



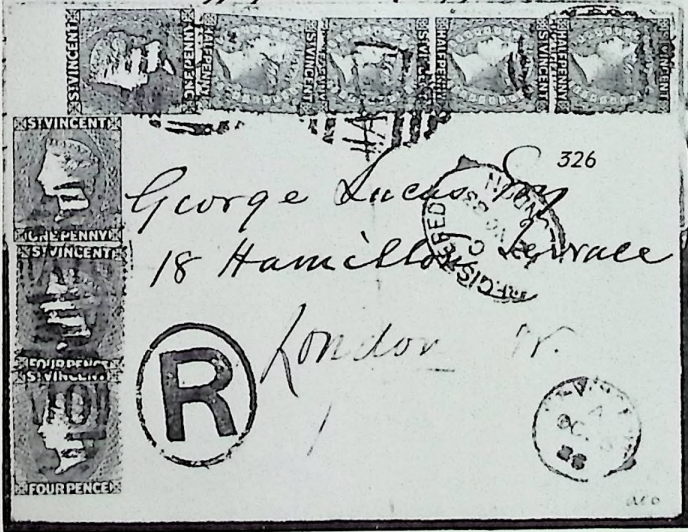
to Charles Allen Esq
 274
 27 J.V. 94
 274



Steamer
 295
 19. 10. 60
 295



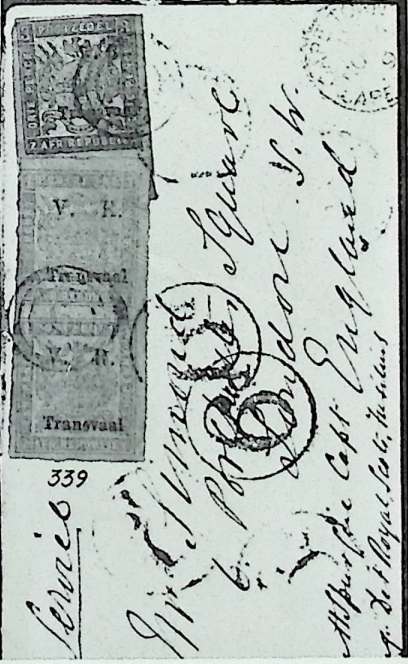
15. 12. 60
 293



George Lucas Esq
 18 Hamilton Terrace
 London W.1
 326
 18. 12. 60



William...
 287



339
 London W.1
 18. 12. 60





323



324



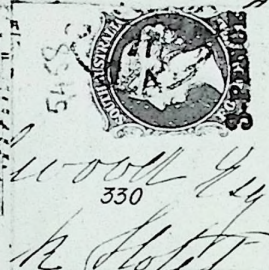
325



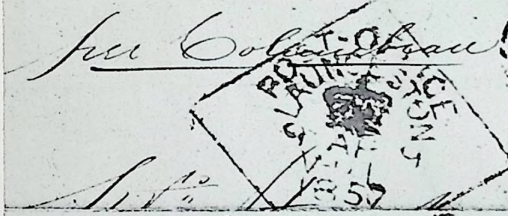
342



329



330



334



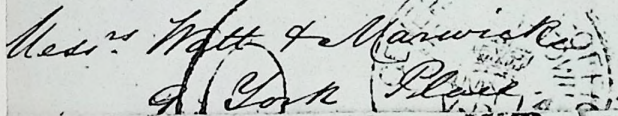
333



343



344



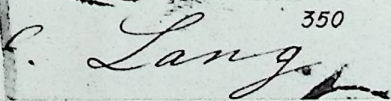
348



347



350





Lot No.	INDIA (continued)	Est. Value
179	1854 4a. blue and red, head die II, frame die I, a vertical pair with small margins, and showing blue wavy line between stamps, used on envelope to London with 2a. green (3)	E £35
180	— 4a. blue and red, head die II, frame die III, stamps spaced to 2 to 2½mm., a horizontal pair close at bottom-right, used on neat envelope to London with 1a. red, die I (see photo-plate III) (3)	E £25
181	Various used on entires, chiefly 1854 issue, including several ¼a. blue values, 1a., 2a. (pair and two singles) and 4a. (17 stamps, 10 covers)	E £15

IONIAN ISLANDS

182	1859 ¼d. ORANGE AND 1d. BLUE, BOTH VERY FINE USED and tied with oval "FRANCA" obliteration to large part double letter sheet from Corfu to Zante. With "Royal" certificate. Included is a stampless cover from Cephalonia, franked with a 20L. Greek stamp used as a Postage Due (see photo-plate IX) . . . (3)	E £100
-----	---	--------

JAMAICA

Great Britain stamps used in Jamaica

183	"AO1" (Kingston) front of cover franked with 1856-58 1d. rose-red, six copies used from Lilliputo London, and 4d. rose (two pairs), 6d. lilac (two singles), used on separate entires (12 stamps, 5 covers)	E £20 18½
184	"A30" (Black River) 4d. rose-carmine, used on double letter sheet to Savanna-La-Mar, well tied (see photo-plate XII) (1)	E £20 18
185	"A31" (Brown's Town) 4d. rose, fine used and tied to single letter wrapper with "BROWN'S TOWN" dated pmk. at side of stamps (see photo-plate XII) (1)	E £25 39
186	"A39" (Falmouth) 1d. rose-red, with Stars in upper corners, a vertical pair and 4d. pale rose, used together on letter wrapper to Savanna-La-Mar and back-stamped "FALMOUTH" (see photo-plate VIII) (3)	E £20 20
187	"A44" (Goshen) 1d. rose-red with Stars in upper corners, used on letter wrapper to Liverpool, not tied, and a pair of the 6d. lilac, tied to letter wrapper . . . (5)	E £12 11
188	"A49" (Lilliput) 6d. lilac, very fine used on part wrapper, well tied with clear "A49" pmk. and "LILLIPUT" dated cachet at side of stamp (1)	E £10 6½
189	"A53" (Mandeville) 1d. rose with Stars in upper corners, a very fine vertical strip of four tied with clear "A53" pmk., and showing "MANDEVILLE" and "KINGSTON" dated pmks. (see photo-plate VIII) (4)	E £20 to £30 20
190	"A54" (Mayhill) single letter sheet franked with two copies of the 1d. rose-red and 4d. rose. The 1d. values are a little stained (3)	E £15 14
191	"A55" (Mile Gully) 6d. lilac, very fine used with clear "A55" pmk., and well tied to letter wrapper (1)	E £15 to £20 31
192	"A57" (Montego Bay) 4d. rose-carmine, two fine wing-margined copies with clear "A57" cancellation to part letter wrapper (2)	E £12 7
193	"A59" (Morant Bay) 4d. rose-carmine, fine used on part letter wrapper, and another pmkd. "A60" (Ocho Rios), damaged also on part letter wrapper (2)	E £10 to £15 7
194	"A62" (Plantain Garden River) 4d. rose, clearly pmkd. "A62" and tied to double letter sheet (1)	E £12 16½
195	"A68" (Porus) 4d. rose, a wing-margined copy, fine used on part of letter wrapper (see photo-plate XII) (1)	E £15 to £20 21

JAMAICA (continued)

Lot No.	Great Britain stamps used in Jamaica (continued)	Est. Value
196	"A71" (Rodney Hall) 4d. rose, a wing-margined copy on single split double letter sheet showing "RODNEY HALL" cancellation at side of stamp (see photo-plate XII) (1)	E £20 22
197	"A75" (Savannah-La-Mar) 4d. rose, a wing-margined horizontal pair used on part letter wrapper and a single marginal copy of the 6d. lilac on single letter sheet (3)	E £15 15
198	"A76" (Spanish Town) 1d. red with Stars in upper corners, a vertical pair, and 4d. rose, used together on double letter sheet and tied with "A76" pmk. . . (3)	E £10 9
Issued Stamps		
199	1860-63, wmk. Pineapple 1d. blue, bisected and well tied to part cover, pmkd. with indistinct "RAMBLE AU 21 73" and clear "MONTEGO BAY AU 22 73". With "Royal" certificate (see photo-plate XII) (1)	E £15 13
200	— ditto 1d. blue, bisected and tied to part of "The Morning Journal", dated "AUG 25 1868" with two smudged "AO1" cancellations. With B.P.A. certificate (1)	E £10 10
201	— ditto 1d. blue, bisected and well tied to letter wrapper with "AO1" and "TOO LATE" cancellations, pmkd. on front "SPANISH TOWN FE 22 68" and backstamped "KINGSTON FE 21 68" (1)	E £12 12½
202	— ditto 1d. blue, a marginal copy bisected and used on slightly stained single letter sheet, well tied with "A38" cancellation, backstamped "FALMOUTH" and on front "SPANISH TOWN JU 20 66" (1)	E £12 —
203	— ditto 1d. pale blue, bisected and used on letter wrapper, well tied with rather indistinct cancellation and at side of stamp "SPANISH TOWN JA 31 66". With B.P.A. certificate (1)	E £12 —
204	— ditto 2d. rose, quartered and used as ½d. on large part wrapper and well tied to Spanish Town, and pmkd. on front "SPANISH TOWN FE 26 68". Uncatalogued and very rare. With "Royal" certificate (see photo-plate IX) . . (1)	E £50 to £75 95
205	A selection of the first issue used on entires, comprising thirty-five stamps, fifteen entires, including pairs, strips and values ½d. to 1/- . . . (35 stamps, 15 entires)	E £30 to £40 70
MALTA		
206	A fine selection of sixteen early ½d. values, used on entires or large pieces, dated from 1862 to 1883 (16 stamps, 15 entires)	E £50 to £60

END OF FIRST DAY'S SALE

SECOND DAY OF SALE: TUESDAY, MAY 10th, 1960

AT ONE-THIRTY P.M. PRECISELY.

The quotations in the right-hand column of this Catalogue are our estimate of the approximate market value.

Lot No.	MAURITIUS	Est. Value
207	1848, EARLY IMPRESSION 2d. BLUE ON BLUE PAPER, S.G. 8, A WONDERFUL COPY WITH LARGE MARGINS ALL ROUND, GOOD COLOUR, LIGHTLY PMKD. AND WELL TIED TO LETTER WRAPPER TO CALCUTTA. Pmkd. on front "MAURITIUS JY 02 1849" and backstamped "CALCUTTA SHIP LETTER", date not legible. A very rare and choice piece. With "Royal" certificate (see photo-plate XIII) (1)	lea 500 E £300 to £400
208	— Early intermediate impression 1d. vermilion on blue paper, good margins three sides, a little cut-into at right, tied with numeral in two rings pmk. to Soldier's letter to England, part of address erased, backstamped "STAPLEHURST MY 21 1856" (see photo-plate XIII) (1)	Book E £50 82 1/2
209	— Worn impression 2d. blue on blue paper, S.G. 24, small to good margins three sides, shaved at top-right, hinged and tied with light "1" in two rings cancellation to double letter sheet to Port Louis, dated 1856 (1)	12 w E £30 31
210	— Latest impression 1d. red-brown, a choice vertical strip of four, with large margins all round, but top stamp close at top-right, lightly pmkd. and well tied to neat envelope to Reunion (see photo-plate XIII) (4)	Book E £75 to £100 80
211	March 1859, small fillet, early impression 2d. blue, deep shade, two copies with good to small margins all round, and Britannia type 6d. blue, all lightly pmkd. and tied to letter wrapper to Batavia, pmkd. "MAURITIUS JY 11 1859", "MADRAS AU 1 1859" and "SINGAPORE SHIP LETTER SE 6 1859" (see photo-plate XIII) (3)	Book E £100 135
212	October 1859, small fillet, worn impression 2d. blue, S.G. 29, a horizontal pair showing lines in background, clear at places, with large margins at top, clear other sides, used on neat envelope to Bordeaux, pmkd. "MAURITIUS OC 12 1859" and "BORDEAUX 6 NOV 59" (see photo-plate XIII) (2)	Book E £70 87 1/2
213	— ditto 2d. blue, a horizontal pair of paler shade and impression less distinct, fine used on part letter wrapper (not tied) to Bordeaux, backstamped "BORDEAUX 8 DEC 59" (see photo-plate XIII) (2)	E £60 84
214	December 1859, Greek border 2d. pale blue, a fine and large copy, used on single letter sheet to Copenhagen and tied, showing despatching and receiving pmks. of 1860 (see photo-plate XIII) (1)	Book E £30 88
215	— ditto 2d. pale blue, a large horizontal pair, has crease between stamps, used on (not tied to) blue envelope to Paris, backstamped "MAURITIUS MR 2 1860" and "PARIS AVRIL 5 60" (see photo-plate XIII) (2)	Scatchell E £75 to £100 72 1/2
216	1858-59 4d. green, S.G. 56, a fine copy tied to envelope to Reunion, backstamped "MAURITIUS MY 21 1859", arrival pmk. not legible (1)	Book E £12 13 1/2
217	1859 6d. blue, S.G. 42, a fine horizontal pair on letter wrapper (not tied) to London, backstamped "MAURITIUS SP 10 1859" and on front "LONDON OC 8 59" (2)	Book E £10 11 1/2

Lot No.

MONTSERRAT

Est. Value

218 1884, perf. 12 1d. red, a bisected copy, S.G. 13b, used on front of circular to Dominica and well tied, pmkd. "MONTSERRAT MY 14 84" and "DOMINICA MY 18 84" (1)

E £20

26

NATAL

219 1857, embossed 6d. green, S.G. 5, a good copy 23mm. x 31mm., creased, used on neat envelope to Glasgow and well tied with oval "POST OFFICE P'MBURG" pmk. and backstamped "LONDON MY 26 58" and "GLASGOW MY 26 58" (see photo-plate XIII) (1)

E £40

E £40 to £50

220 Various Chalton Head type used on entires, containing 1d. red (13), 3d. blue (17), 6d. lilac (8), including strips of four, "POSTAGE" overprints, a Ladysmith Siege envelope, and Nyasaland imperf. 1d. cheque stamps on entire (49 stamps, 15 entires)

E £40 to £50

NEVIS

221 1866, engraved 4d. orange, S.G. 11, just tied to neat envelope to New York, pmkd. "NEVIS NO 10 73" and "N.Y. STEAMSHIP NO 20 10c" (1)

E £10

222 ditto 1/- yellow-green, very fine used and tied to envelope (address erased), pmkd. on front "NEVIS NY 24 79" and "LONDON 11 JU 79" (see photo-plate XIV) (1)

E £20

223 1882 1d. lilac-mauve, a horizontal strip of three and two single copies, one overprinted "REVENUE", used together on neat envelope to England, pmkd. "NEVIS MR 13 83" and backstamped "HULL MR 31 83" (5)

E £10

224 1d. lilac-mauve, bisected and used on neat envelope to St. Kitts, well tied but stained by pmk., cancelled "NEVIS JU 4 83" (1)

E £5

NEW BRUNSWICK

225 1851 3d. bright red, an extremely fine copy used on neat envelope to Dorchester, pmkd. on reverse 1857 (see photo-plate XIV) (1)

E £30

226 3d. bright red, used on damaged buff envelope to Nova Scotia and tied, large margins three sides showing portions of two adjoining stamps, has two scissor cuts clear of design of stamp. The envelope has four 1860 backstamps (1)

E £15

227 3d. dull red, good margins three sides, a trifle cut-into at other, well tied to envelope to Pictou N.S., dated 1857 (1)

E £15

228 3d. dull red, a lightly pmkd. pair, one stamp very fine, other cut-into at one side, well tied to double letter sheet to New York, dated 1854 (see photo-plate XIV) (2)

E £50

229 3d. DULL RED, A SUPERB BIASECTED COPY AND 6d. YELLOW, good margins three sides, slightly cut-into at portion of other, both lightly pmkd. and well tied to buff envelope to Glasgow, 7 1/2d. rate, showing "ST. JOHN NEW BRUNSWICK" despatching pmks., "LIVERPOOL BR. PACKET 26 JU 59" and "GLASGOW JN 27 59" obliterations. A rare cover. With B.P.A. certificate (see photo-plate XIV) (2)

E £150 to £200

230 6d. YELLOW, AN EXCEEDINGLY FINE COPY with large margins, lightly pmkd. and well tied to double letter sheet dated 23 Jan. 1854 to New York, showing despatching cancellations and "PAID 10 CENTS" mark in red (see photo-plate XIV) (1)

E £150

231 6d. yellow, a bright copy with large margins three sides, a little cut-into at other, lightly pmkd., and well tied to letter wrapper to New York (part of address cut-out), pmkd. on reverse "ST. JOHN NEW BRUNSWICK JY 16 1853" (see photo-plate XIV) (1)

E £75 to £100

232 6d. YELLOW, A VERY FINE BIASECTED COPY USED ON LOCAL BUFF ENVELOPE, lightly cancelled and well tied, backstamped "SACKVILLE MY 23 1859" and "ST. JOHN N.V.". A rare cover. With "Royal" certificate (see photo-plate XIV) (1)

E £200

Lot No.	NEW BRUNSWICK (continued)	Est. Value
233	1860 1c. dull claret, a vertical strip of four and a single copy used on envelope and well tied, backstamped "INDIANTOWN AP 27 1864" and "FREDERICTON AP 28 1864" (5)	E £20 21
234	— 2c. orange-yellow, two copies, and 1c. purple, used together (not tied) on envelope to Bristol N.B. The envelope which has flap missing is backstamped "JY 30 1866" (see photo-plate XIV) (3)	E £30 23
235	— 5c. sap-green, two fine copies, well tied to separate entires (2)	E £20 17 1/2
236	— 10c. red, bisected and used on front of entire, lightly pmkd. and well tied (see photo-plate XIV) (1)	E £40 39
237	— Various "Cents" used on eight entires, comprising 1c. (2), 5c. (3), 10c. (2) and 12 1/2c. (2) (9 stamps, 8 entires)	E £20 36

NEWFOUNDLAND

238	1857 4d. SCARLET-VERMILION, S.G. 4, A BEAUTIFUL COPY WITH LARGE MARGINS ALL ROUND AND EXCELLENT COLOUR, lightly pmkd. and tied to letter wrapper to New York. The front shows faint despatching pmk. dated 1859 in red, and at side "BOSTON BR. PKT. (5 AUG 41)" in black. With "Royal" certificate (see photo-plate XIV) (1)	E £300 600
239	— 8d. SCARLET-VERMILION, A FINE COPY BIASECTED VERTICALLY and well tied to letter wrapper addressed to Messrs. Tucker, Baltimore, showing despatching pmk. of Jan. 1861 in red, superimposed with "BOSTON BR. PKT. 5 Cents FEB 10" in black, rare. With "Royal" certificate (see photo-plate XIV) (1)	E £150 250
240	1861-62 6d. rose-lake, S.G. 21, a very fine large-margined copy tied to letter wrapper to England, pmkd. "ST. JOHN'S MY 18 1864 NEWFOUNDLAND" and "TEIGNMOUTH" receiving pmk. on reverse. With "Royal" certificate (see photo-plate XIV) (1)	E £15 210
241	1866, Seal 5c. brown, well centred and very fine used on front of entire, tied with light cork pmk. (see photo-plate XIV) (1)	E £10 22
242	— 10c. black, 12c. red-brown (pair) and 13c. orange-yellow, all used on entires, first two to England, other to United States (4)	E £20 48
243	— 10c. BLACK, BIASECTED HORIZONTALLY, S.G. 27a, THE LOWER HALF, very fine used and well tied to envelope to Cape Breton, 5c. rate. The envelope is pmkd. at upper-left corner "FERRYLAND NF", dated "Nov 2" in MS. and backstamped "HALIFAX NO 9 66" and "LITTLE GLACE BAY NO 10 66", very rare. With "Royal" certificate (see photo-plate XIV) (1)	E £150 to £200 400
244	Various early issues used on seven entires, including 1866 2c. and 1868 1c. dull purple used together, Seal 5c. black, a vertical pair pmkd. and pen cancelled on envelope with 2c. green, etc. (11 stamps, 7 entires)	E £25 77 1/2

NEW SOUTH WALES

Sydney Views

245	Plate II 1d. carmine on greyish wove paper, a horizontal pair with small to good margins all round, showing portion of adjoining stamp at right, lightly pmkd. "38" and used on large part single letter sheet (see photo-plate XV) (2)	E £25 22
246	— 1d. dull carmine on bluish wove paper, a vertical pair with large margins all round, lightly pmkd. and tied to dated letter wrapper, very fine (see photo-plate XV) (2)	E £30 to £40 42
247	— 1d. brownish red, a horizontal pair, a little cut-into but tied to large part dated letter wrapper, pmkd. "94" (2)	E £10 23
248	— 1d. dull carmine, margins three sides, showing portion of adjoining stamp at left, but slightly cut-into at right, used on part wrapper with laureated type 1d. carmine, lightly pmkd. and tied (2)	E £8 8

NEW SOUTH WALES (continued)

Lot No.	Sydney Views (continued)	Est. Value
249	Plate I 2d. blue, worn impression, large margins and very fine used on large part letter sheet, lightly pmkd. "66" and just tied (1)	E £12
250	— 2d. blue, worn impression, two copies with large margins all round, one stamp a little creased, used on large part letter sheet to Edinburgh with Victoria first type 1d. red-brown, large margins three sides, close at bottom, all stamps lightly pmkd. "21" (Campbelltown) (see photo-plate XV) (1)	E £40 135
251	Plate II 2d. Prussian blue, worn impression, large margins all round and tied to large part letter wrapper (1)	E £8 23
252	— 2d. Prussian blue, worn impression, a horizontal pair with large margins, used and tied with rather heavy pmk. to circular (2)	E £15 36
253	Plate III 2d. ultramarine, large margins all round, and very fine used on neat blue envelope, lightly pmkd. "21" and well tied (1)	E £20 35
254	— 2d. ultramarine, clear but close at bottom, fine used on letter wrapper and tied with "55" pmk. and showing "MISSENT TO SYDNEY" mark on front (1)	E £10
255	— 2d. ultramarine, a fine large-margined horizontal pair used on Official wrapper and tied, dated Sydney 29th Nov. 1850 (2)	E £30
256	Plate IV 2d. bright blue, large margins three sides, close but not cut-into at left, lightly pmkd. and well tied to letter wrapper (1)	E £15
257	— 2d. ultramarine on vertically laid paper, two fine copies used together on neat envelope to London and tied (see photo-plate XV) (2)	E £30
258	3d. yellow-green on soft yellowish paper, an attractive copy with large margins, used on letter wrapper to London and well tied, very fine (see photo-plate XV) (1)	E £20
259	1853 8d. dull yellow, a horizontal pair with margins showing portions of two adjoining stamps at top, has small scissor cut at top between stamps, lightly pmkd. and used on large redirected letter wrapper to Devonport, together with laureated type 2d. dull blue in a pair, and Great Britain, 1841 2d. (two cut-into), full despatching and receiving pmks. of 1854 (see photo-plate XV) (6)	E £40
260	1856, imperf. Registered 6d. vermilion and Prussian blue, and diadem type imperf. 6d. grey, both very fine on mourning envelope to London (2)	E £12
261	Various early issues used on entires or large pieces, all imperf., except five containing Sydney Views 3d. (three on separate wrappers), 1d., 2d. and 3d. laureated types, diadem type imperf., etc. (34 stamps, 19 entires)	E £30

NEW ZEALAND

262	1855, London Print 2d. dull blue on blued paper, large margins all round, lightly pmkd. and very fine used (hinged) on blue envelope to England, despatching and receiving pmks. of 1856 (see photo-plate XV) (1)	E £40
263	— ditto 1/- pale yellow-green on blued paper, a very fine copy with margins all round, large three sides, lightly cancelled and well tied to neat envelope to London, pmkd. on front "REGISTERED JA 13 58" and backstamped "NEW PLYMOUTH SP 5 1857", rare. With "Royal" certificate (see photo-plate XV) (1)	E £100 to £125
264	November 1855, blue paper 1d. red, large margins showing portion of adjoining stamp at left, cancelled "16" and used on neat local envelope to Christchurch, back-stamped "PORT VICTORIA Sp 2 1857" (see photo-plate XV) (1)	E £40 120

Lot No.	NEW ZEALAND (continued)	Est. Value
265	November 1855, blue paper, 2d. blue, a large-margined copy used on slightly stained envelope to London and just tied, backstamped "WELLINGTON MR 27 1857" and "AUSTRALIAN PACKET LIVERPOOL AU 1 1857" (1)	E £12
266	— ditto 2d. blue, choice horizontal pair with large margins, lightly pmkd. and tied to letter wrapper to Sydney (see photo-plate XV) (2)	E £40
267	— ditto 1/- green, bisected vertically, and used as 6d. on blue envelope to London, lightly cancelled "18" and well tied, backstamped "OTAGO AU 16 1858" and on front "LONDON NO 18 58". The bisect has been cut from envelope and replaced. Rare. With "Royal" certificate (see photo-plate XV) (1)	E £100 to £150
268	1858-59, no wmk. imperf. 2d. blue, a horizontal strip of three with margins, used and tied to neat envelope to London, backstamped "OTAGO MR 31 1859" and on front "LONDON JU 11 59" (3)	E £15
269	— ditto, ditto 6d. bistre-brown, a very lightly pmkd. horizontal pair, slightly cut-into, but used on neat envelope to Jamaica, not tied, pmkd. "NEW PLYMOUTH AP 11 1862", "LONDON JU 16 62" and "KINGSTON JAMAICA JY 5 62" (2)	E £12
270	— ditto, ditto 6d. pale brown, large margins three sides, slightly cut-into at other and Victoria, Queen on Throne 6d. blue, both well tied with Victoria cancellation to buff envelope to Scotland, pmkd. "MELBOURNE JA 6 60", "ABERDEEN MR 13 1860" and "ELLON MR 13 1860". Scarce cover (see photo-plate XV) (2)	E £20
271	Various perf. full face type used on nine entires, comprising 1d., 2d. blue (4), 2d. orange (4), 3d. lilac (2), 3d. mauve (2), 6d. (4) and 1/-, a fine lot (18 stamps, 9 entires)	E £20

NIGER COAST

272	1892 2d. green and carmine, bisected vertically, 1894 1d. vermilion, bisected diagonally and 1893 1d. pale blue and 2d. green, all used together and well tied to registered envelope to England (4)	E £10
273	1893 1d. dull blue, bisected diagonally and 2d. green, used on front of 2d. embossed envelope; and a complete registered envelope franked with 1894 1d. orange-vermilion horizontal pair, 2d. slate and ½d. on 2½d. blue (7 stamps, 2 entires)	E £10
274	Registered envelope to England bearing 1893 2d., 2½d., 5d., 1/-, 1894 "½" on half of 1d. pale blue, and "1" on half of 2d., all well tied and very fine (see photo-plate XVII) (6)	E £20

NOVA SCOTIA

275	1851 1d. red-brown, a horizontal pair with large margins, right-hand stamp cracked by fold, and a fine single copy with margins, but close at bottom, all lightly pmkd. and used on complete blue double letter sheet to Prince Edward Island, pmkd. "HALIFAX NOVA SCOTIA NO 3 1856" and "PRINCE EDWARD ISLAND NO 5 1856" (see photo-plate XV) (3)	E £40 to £50
276	— 3d. deep blue, large margins, lightly pmkd. and well tied to buff entire to Halifax, backstamped "AMHERST FE 2 1856" and oval "H FE 5 1856" (1)	E £15
277	— 3d. bright blue, enormous margins (except at one corner), showing portions of three adjoining stamps, well tied to blue letter wrapper to Halifax, pmkd. "THURO FE 10 1860" and oval "H FE 10 1860" (1)	E £12
278	— 3d. bright blue, a strip of three, shaved at one corner, otherwise with good margins and one stamp damaged by crack, lightly pmkd. and well tied to blue letter wrapper to Baltimore, dated 1860 and showing "PAID 10" mark in red circle on front (3)	E £20

Lot No.

NOVA SCOTIA (continued)

Est. Value

- 279 1851 3d. pale blue, slightly creased, but with large margins, lightly pmkd. and tied to buff envelope to Prince Edward Island, backstamped 1857 (1) E £10
- 280 — 3d. pale blue, large margins, but slightly stained, well tied to blue letter wrapper to Prince Edward Island, showing despatching and receiving cancellations of 1856 on reverse (1) E £10
- 281 — 3d. pale blue, another copy with large margins tied to envelope to Hantsport, the stamps and envelope slightly stained. The envelope is backstamped 1857 (1) E £10
- 282 — 3d. pale blue, a good bisected copy and two fine normal specimens used as 7½d., on neat envelope to Scotland and well tied. Dated 1860 and full despatching and receiving pmks. are on reverse (see photo-plate XVI) (3) E £75 *77 1/2*
- 283 — 6d. yellow-green, a bright copy touched at one corner otherwise extremely fine with large margins, lightly pmkd. and well tied to complete double letter sheet from New Annan Sept. 6th 1864 to Meford Mass. The front shows "NEW BRUNSWICK" undated pmk. and "PAID 10 cents" mark and is backstamped "TATAMAGOUCHE SP 5 1854", "AMHERST SP 7 1854" and "St. JOHNS NEW BRUNSWICK SP 8 1854" (see photo-plate XVI) (1) E £40 *Lea 37*
- 284 — 6d. yellow-green, large-margined but torn in two places, used on neat envelope to Scotland with a superb (marginal) well tied bisected copy of the 3d. bright blue, 7½d. rate. The reverse is pmkd. "HALIFAX NOVA SCOTIA", "DUMFRIES MR 24 1857" and on front tombstone type "POST LETTER LIVERPOOL MR 25 57" (see photo-plate XVI) (2) E £125 *100*
- 285 — 6d. yellow-green, a very fine bisected copy used on neat envelope to Cornwallis, showing three different 1860 backstamps. With "Royal" certificate (see photo-plate XVI) (1) E £75 to £100 *145*
- 286 1860-63 1c. and 2c. (marginal horizontal pair), all lightly pmkd. and used on large part buff envelope to Bridgwater, pmkd. on back "HEPBURN QC 15 1863" and "BRIDGWATER OC 17 1863" (3) E £7 *13*
- 287 — 1c., 5c. and 10c. (two pairs), all used together and well tied to slightly damaged envelope to Calcutta, pmkd. on front "LONDON IX 17 65" (see photo-plate XVII) (6) E £30 *280*
- 288 — 2c., 5c., 10c. and 12½c., all very fine used on separate entires and tied (4 stamps, 4 entires) E £20 *27*
- 289 — 2c. (5), 5c. (7), 10c. (2) and 12½c. (3), all used on sixteen entires or large pieces, a fine lot (17 stamps, 16 entires) E £40 to £50 *57 1/2*
- 290 — 5c. blue, three copies (one damaged), used on front of Registered envelope to Cape Breton and well tied (3) E £10 *10 1/2*
- 291 — 8½c. green, centred to bottom-left, used on blue letter wrapper to Boston (part of address erased) and well tied, backstamped 1861. This value is very scarce on cover (see photo-plate XVI) (1) E £40 *115*
- 292 — Another copy used on blue letter wrapper to North Sydney, well tied, but stamp has crease, pmkd. on reverse "HALIFAX SP 19 1861" and "NORTH SYDNEY SP 21 1861" (see photo-plate XVI) (1) E £30 to £40 *46*
- 293 — 10c. and 12½c. (horizontal pair), used together on Registered envelope to New Glasgow N.S. and backstamped "HALIFAX DE 19 65" (see photo-plate XVII) (3) E £30 *195*
- 294 — 10c. scarlet, bisected and used on neat envelope to Amhurst, lightly pmkd. and well tied, backstamped "PARRSBOROUGH DE 10 1860" and "AMHURST DE 11 1860". With B.P.A. certificate (see photo-plate XVI) (1) E £50 *52 1/2*
- 295 — 12½c. black, two horizontal pairs, one stamp of one pair has crease, used on blue letter wrapper to London and well tied, dated 1860 (see photo-plate XVII) (4) E £20 *200*
270

Lot No.

PRINCE EDWARD ISLAND

Est. Value

- 296 1861, perf. 9 2d. rose, a well centred copy used on buff envelope (small piece torn out right corner) to Vernon River, backstamped "SUMMERSIDE", date not legible (see photo-plate XVI) (1) E £15 to £20 *14*
- 297 — ditto 2d. rose, bisected diagonally and well tied to yellow envelope to Cape Breton with a normal copy, 3d. rate, has five different 1862 backstamps. The bisect has a damaged corner. With "Royal" certificate (see photo-plate XVI) (2) E £40 to £50 *100*
- 298 — ditto 3d. blue, two perfs. rounded at upper-left and lower-right corners, lightly pmkd. and tied to large piece to Halifax N.S., pmkd. "CHARLOTTE TOWN MY 6 1861" and "H MY 7 1861". With B.P.A. certificate (see photo-plate XVI) (1) E £20 *8*
- 299 1863-68 2d. rose, lightly pmkd. and penmarked, 3d. blue and 1872 3c. rose, all used on separate envelopes, last with Star obliteration (3) E £20 *15*
- 300 1867-68 4d. black, bisected diagonally and well tied to envelope to West Cape, pmkd. "SUMMERSIDE OCT 17 1870 P.E.I." With "Royal" certificate (see photo-plate XVI) (1) E £50 *95*
- 301 *6c.* Another bisected copy, slightly creased and a little stained, used on neat envelope and pmkd. "CHARLOTTE TOWN DE 19 72", well tied with Star cancellation. With B.P.A. certificate (see photo-plate XVI) (1) E £40 *72 1/2*
- 302 1870 4 1/2d. (3d. stg.), few perfs. irregular, but used and tied to small mourning envelope to England, pmkd. "PRINCE EDWARD ISLAND OC 5 70", "PAID LIVERPOOL BR. PACKET 17 OC 70" and on back "SHEPTON MALLET OC 18 70". A very rare cover (see photo-plate XVIII) (1) E £100 *190*

QUEENSLAND

- 303 1860, wmk. large Star, imperf. 1d. carmine-rose, a horizontal pair, left-hand stamp very fine but for small scissor-cut at bottom, right-hand stamp cut-into, used on blue letter wrapper to Brisbane, dated "BRISBANE AU 2 1861" (see photo-plate XVI) (2) E £20 *28*
- 304 — ditto, ditto 6d. green, two single copies, one with very large margins, other slightly cut-into at bottom, used on blue envelope to England and well tied, pmkd. on back "IPSWICH FE 11 1861 N.S.W.", "BRISBANE FE 12 1861" and on front "ILMINSTER AP 13 61". The stamps have been partly cut from the envelope (see photo-plate XVIII) (2) E £50

ST. CHRISTOPHER

- 305 1885 1/2d. on half of 1d. carmine-rose, unsevered pair, 1886 1/2d. on 6d. green and 4d. on 6d. green, S.G. 22a, 25, 26, all used on neat Registered envelope to England, pmkd. "ST. KITTS NO 11 86" and "HORSHAM STATION OFFICE NO 29 86" (4) E £10 *34*
- 306 1887 1d. on 1/2d. dull green, S.G. 29, two horizontal pairs and a single copy used on neat envelope to Antigua, pmkd. "ST. KITTS JU 9 87" and "ANTIGUA JU 10 87" (5) E £10 *16*

ST. HELENA

- 307 1861, clean-cut perf. 6d. blue, used on India 1a. brown (uncancelled) envelope to England, pmkd. in red but not tied, the front of envelope shows double line oval "ST. HELENA 1861" pmk. and "LONDON JY 31 61" and "5" in crayon (see photo-plate XVIII) (1) E £30 *42*

Lot No.

ST. HELENA (continued)

Est. Value

- 308 1864-67 4d. carmine, very fine used on complete envelope (not tied) to England, pmkd. double-lined oval "ST. HELENA SP 10 1866" and "LONDON 11 OC 1866" and backstamped "SHIPSTON-ON-STOUR OC 11 66" . (1) E £12 28
- 309 — 4d. carmine, a horizontal pair used on blue envelope to Cape of Good Hope and tied, showing double-lined oval "ST. HELENA MY 31 1867" "CAPE TOWN JU 12 67" and on reverse "KING WILLIAMS TOWN JU 17 1867" obliteration (2) E £15 32
- 310 1865-68, perf. 12½ 4d. carmine, and 1882, perf. 14 x 12½ 1/- deep green, S.G. 15, 29, both used on Registered envelope to England, not tied, showing various pmks. of 1881 (2) E £20 21

ST. LUCIA

- 311 1864, CC, perf. 12½ 6d. mauve and 1/- orange, two copies of each value used on separate letter wrappers and well tied (4) E £15 39
- 312 — ditto 1/- orange, two copies and perf. 14 4d. yellow, all very fine used on separate entires and well tied (2) E £15 34
- 313 1882-84, perf. 14 ½d. green, S.G. 25, a horizontal strip of six used on front of cover with early date "ST. LUCIA MY 28 82" and "TRINIDAD MY 31 82" pmks. (6) E £12 16
- 314 — ditto 6d. violet, used on registered envelope to Winch Bros. Colchester, and perf. 12 4d. yellow, used on double letter sheet to London, both well tied and very fine (2) E £14 29
- 315 1886-87 6d., 1891-92 ½d. on half 6d. (2), 1d. on 4d. and ½d. on 3d. (2), S.G. 41, 54, 55, 56, all used together on Registered envelope to Dominica, dated 1892 . (6) E £10 14
- 316 A selection of Postal Fiscals used on six entires (10 stamps, 6, entires) E £10 40

ST. VINCENT

- 317 1862, rough perf. 14 to 16 1d. rose-red, horizontal pair and 6d. deep green, all very fine and well centred, used on blue letter wrapper to Paris, lightly pmkd. but not tied, despatching and receiving pmks. of 1866 are shown (3) E £10 27
- 318 — ditto 6d. deep green, a horizontal pair off-centre but used on neat envelope to Liverpool and well tied, dated 1863 (2) E £10
- 319 1866, perf. 11 to 12½ 4d. deep blue, S.G. 8, two very fine well centred copies, one slightly creased, used on large part blue letter wrapper to Demerara and well tied (see photo-plate XVIII) (2) E £30 42
- 320 1868 4d. yellow and 1/- indigo, used together on blue single letter sheet to Paris, a fine and scarce entire dated "St. Vincent AU 10 70" (see photo-plate XVIII) (2) E £25 62½
- 321 — 1/- indigo, well centred and very fine used on single letter sheet to Glasgow, part of address crased, well tied and pmkd. on front "ST. VINCENT JA 8 70" and backstamped "GLASGOW FE 1 70" (see photo-plate XVIII) . (1) E £30 67½
- 322 1871, ROUGH PERF. 14 TO 16 6d. BLUE-GREEN, S.G. 16, two copies (one has faint crease), used on neat envelope to London, each stamp pmkd. "G JA 26 73" superimposed "A 10" and at left of cover "G JA 26 73" "ST. VINCENT JA 27 73", "LONDON 14 FE 73". An extremely rare entire especially with the "G" cancellation over stamps (see photo-plate XVIII) (2) E £150 240
- 323 1872, perf. 11 to 12½ 1/- deep rose-red, S.G. 17, a horizontal pair of deep colour, but centred to top-right, used on neat envelope to London and well tied, pmkd. "ST. VINCENT MY 27 73" and "LONDON PAID 12 JU 73" (see photo-plate XIX) (2) E £40 to £50 42

172a
 172b
 172c
 172d
 172e
 172f
 172g
 172h
 172i
 172j
 172k
 172l
 172m
 172n
 172o
 172p
 172q
 172r
 172s
 172t
 172u
 172v
 172w
 172x
 172y
 172z

Est. Value
 115

Lot No.

ST. VINCENT (continued)

- 324 1875, perf. 11 to 12½ 1/- claret, S.G. 20, a choice well-centred horizontal pair used on blue letter wrapper to Glasgow, part of address erased, lightly pmkd. and just tied with "ST. VINCENT NO 9 75" and backstamped "GLASGOW NO 29 75" (see photo-plate XIX) (2) E £40
- 325 1872-73, perf. about 15 6d. blue-green, S.G. 17c, a vertical strip of four of deep colour, used on blue letter wrapper to Glasgow, part of address erased, pmkd. on front "ST. VINCENT NO 28 75" and backstamped "GLASGOW DE 14 75". The lower stamp of the strip has slight crease (see photo-plate XIX) (4) E £30
- 326 1881 ½d. orange (4), 1882-84 1d. drab (2) and 4d. bright blue (2), S.G. 33, 36, 38, all used together on neat Registered envelope to London, pmkd. "ST. VINCENT OC 6 83" and "REGISTERED LONDON 12 NO 83" (see photo-plate XVII) (8 stamps, 1 entire) E £20
- 327 1890 2½d. on 4d. lake-brown, S.G. 55, a very fine horizontal pair with sheet margin at top, used on deep Registered envelope to Tobago and well tied, pmkd. "KINGSTOWN MR 11 95" and "TOBAGO MR 14 95" (2) E £12
- 328 Various Queen issues used on nine entires, including the scarce 6d. violet used on Registered envelope with three others to Germany . . . (21 stamps, 9 entires) E £20

SOUTH AUSTRALIA

- 329 1856-58 1/- red-orange, large margins all round, deep colour, lightly pmkd. and tied to large part single letter sheet, pmkd. "PORT ADELAIDE OC 8 1857" and "LONDON JA 18 58" (see photo-plate XIX) (1) E £40
- 330 1870-71, perf. 10, the rare 3d. in black on 4d. Prussian blue, S.G. 93a, slightly off centre, but fine used on neat envelope to Sandhurst, Victoria and well tied, dated 1871. With "Royal" certificate (see photo-plate XIX) (1) E £30
- 331 Five entires bearing imperf., including two copies of the 6d. deep blue and a large part envelope franked with perf. 1/- chestnut (6), 2/- carmine (2) (17 stamps, 6 entires) E £12

TASMANIA

- 332 1853, worn impression 1d. pale blue, large margins three sides, slightly cut-into at right and has two scissor-cuts, one touching design of stamp, used and well tied to small, but slightly stained local envelope (1) E £10
- 333 1855, wmk. large Star, imperf. 1d. carmine, two copies, one very fine with large margins all round, other with large margins three sides, but slightly cut-into at other, and a fine 4d. blue, all used on large part entire to Edinburgh, and pmkd. 1856 (see photo-plate XIX) (3) E £40
- 334 — ditto, ditto 2d. green, large margins three sides, close at bottom, and 4d. blue, both a trifle stained, but used together on large part letter to England, well tied and dated 1857 (see photo-plate XIX) (2) E £15
- 335 1856, no wmk., pelure paper 1d. deep brick-red, S.G. 24, slightly cut-into, but margins at places, hinged and well tied to local letter front, pmkd. "28 JY 1857". With "Royal" certificate (1) E £10
- 336 Various early imperf. on five entires, including 1853, 4d. red-orange 1855 2d. green and 4d. blue, used together, etc. (8 stamps, 5 entires) E £25

TRANSVAAL

- 337 Cover dated 1875, franked with an imperf. 6d. deep blue, bisected diagonally and well tied to envelope with "16" in three rings, pmkd. "MARABAS STAD 19 MA 75" (see photo-plate XX) (1) E £10 to £20

Lot No.	TRANSVAAL (continued)	Est. Value
338	Soldier's blue envelope, addressed to London, bearing a fine and well tied imperf. 1d. brick-red overprinted "V.R. TRANSVAAL", pmkd. "PRETORIA AU 24 77", "CAPE TOWN SP 3 77" and "BURNLEY 2 OC 77", also "1d" mark in MS. (see photo-plate XX) (1)	E £15 to £20
339	Another Soldier's envelope to London, franked with a vertical pair of the 1d. red on orange, upper stamps badly torn, and a single 3d. mauve on blue, all overprinted "V.R. Transvaal", pmkd. "CAPE TOWN NO 24 79", "LONDON 18 DE 79" and several "60" marks in circle (see photo-plate XVII) (3)	E £15 to £20
340	Another Soldier's envelope to England, franked with a single rouletted 1d. red on blue, overprinted "V.R. Transvaal" and well tied, pmkd. "CAPE TOWN NO 23 77" (see photo-plate XX) (1)	E £15
341	1878-80 1d. horizontal pair, 4d. (3), 6d. (2) and 1/- green, all used on four envelopes to England (8 stamps, 4 entires)	E £10
342	— 4d. sage-green, two copies, one bisected diagonally, used on blue Registered envelope and well tied with "16" in three rings pmk., 6d. rate. Pmkd. "MARABAS STAD 10 NO 82" (see photo-plate XIX) (2)	E £15 to £20
343	— 6d. olive-black, well tied to neat envelope to Scotland with Cape of Good Hope rectangular 6d. mauve, pmkd. "STANDERTON AUG 10 80", "PRETORIA AUG 12 80", "CAPE TOWN AU 24 80" and "FORFAR SP 16 80" (see photo-plate XIX) (2)	E £15 to £20
344	— 6d. olive-black, bisected diagonally, used on blue envelope, well tied with "152" in three rings and pmkd. at side "NYLSTROM JUN 5 80" (see photo-plate XIX) (1)	E £10 to £15

TRINIDAD

345	1851-56 1d. deep blue, used on single letter sheet, dated "SP 7 1853", not tied, 1d. grey, well tied to letter wrapper, but slightly cut-into one side, and 1d. brick-red, well tied to part entire, pmkd. "2", "3" and "21" respectively (3)	E £15
346	— 1d. brownish grey, large margins and very fine used on letter wrapper to Port of Spain, well tied with two pmks., backstamped "JU 16 1853" (see photo-plate XVIII) (1)	E £10
347	1853, early impression 1d. blue on bluish cartridge paper, small margins three sides, slightly cut-into at top and faintly creased, well tied to "TRINIDAD PRICES CURRENT", dated Feb. 23 1853 (see photo-plate XIX) (1)	E £50
348	1856 1d. bright blue, touched at portion of left side, otherwise fine used on single account's sheet to Port of Spain and well tied with "2" pmk., dated "DE 17 1856" (see photo-plate XIX) (1)	E £30
349	1859, pin-perf. 12½ 6d. deep green, used on letter wrapper to Glasgow, tied and showing indistinct "PAID AT TRINIDAD" and "LONDON JU 27 60" pmk. (1)	E £8
350	— ditto 1/- purple-slate, S.G. 37, fine used with a horizontal pair of the 1d. rose-red, perf. 13½-14, one stamp creased, on buff envelope to Darmstadt, showing crowned circle "PAID AT TRINIDAD" despatching and receiving pmks. of 1860. With "Royal" certificate (see photo-plate XIX) (3)	E £40
351	— Pin perf. 13½-14 1d. rose-red, a horizontal strip of five, two stamps ant-holed, used on "Trinidad Prices Current" to Porto Rico, lightly pmkd. and tied, showing crowned circle "PAID AT TRINIDAD" below stamps and cancelled "TRINIDAD FE 23 1860" (see photo-plate XX) (5)	E £10
352	— ditto 1d. rose-red and 4d. dull-lilac, used together on letter wrapper to Martinique and well tied, showing crowned circle "PAID AT TRINIDAD" at left of stamps (see photo-plate XVIII) (2)	E £15

Lot No.	TRINIDAD (continued)	Est. Value
353	1861, rough perf. 14-16½ 1d. rose, a horizontal pair, and two copies of the 6d. deep green, used together and tied to envelope to Darmstadt, showing crowned circle "PAID AT TRINIDAD" and dated 1862 pmks. (see photo-plate XX) (4)	E £15 to £20
354	1862-63, perf. 11½, 12 1d., fine used on double letter-sheet to Port of Spain, lightly pmkd. and well tied, dated "DE 12 1863" (see photo-plate XVIII) . . . (1)	E £10
355	1863-75, perf. 12½ 4d. bright violet, three horizontal pairs, two used together on envelope to Paris, other pair on envelope to Bordeaux (6)	E £10
356	Nine perf. Britannia types used on four covers, including a strip of three of the 1/- chrome-yellow (9 stamps, 4 entires)	E £10

UGANDA

357	Four covers franked with various values of the 1896 issue and used in conjunction with British East African stamps, and another entire bearing a 2a. black, overprinted "L" (13 stamps, 5 covers)	E £10 to £15
-----	---	-----------------

VICTORIA

358	Prepaid "front" from London to Melbourne, readdressed to Castlemaine and franked with Victoria, first type, Campbell and Fergusson printing, 1d. brick-red, 3d. blue, and "REGISTERED" 1/- pink and blue, showing "LONDON PAID" mark and well tied with Victoria "IV" in barred ovals . . . (3)	E £15
359	1854-65, imperf. 1/- blue, a vertical strip of five, vertical pair and single, slightly cut-into, but used on envelope to Switzerland and tied, dated 1859 . . . (8)	E £15
360	1854-59, imperf. 2/- dull bluish green, S.G. 49, large margins and tied to letter wrapper to New South Wales, franked in addition with the "REGISTERED" 1/- pink and blue (damaged) (2)	E £10
361	— "TOO LATE" 6d. lilac and green, large margins and very fine used on single letter sheet to Bordeaux with 6d. dull orange, heavily cancelled . . . (2)	E £10

VIRGIN ISLANDS

362	A slightly damaged buff envelope addressed to London, bearing 1866 1d. green horizontal pair, 6d. rose and 1/- lake-red on rose, all lightly pmkd. "A13", not tied, backstamped "TORTOLA 69" and on front "LONDON MY 27 69". A rare cover (see photo-plate XX) (4)	E £40 to £50
-----	--	-----------------

WESTERN AUSTRALIA

363	1854 1d. black, a horizontal pair, right-hand stamp very fine, left-hand copy slightly cut-into, and 4d. blue, large margins three sides, used split open envelope to London and backstamped "5 MY 1856" (3)	E £10
364	— 1d. black, a vertical pair and a single copy of the 4d. blue, slightly cut-into but used together on part letter to London and tied with reddish brown pmk. (3)	E £10
365	1857 6d. grey-black, large margins three sides, but shaved at right, used and tied to double letter-sheet to England (see photo-plate XX) (1)	E £20
366	1861, intermediate perf. 2d. blue, perf. 14 4d. vermilion (horizontal pair), used and tied to envelope to Freemantle, and another envelope bearing a pair of the 1865 6d. mauve, addressed to Sydney (5 stamps, 2 entires)	E £10

END OF SALE

The Bond Street Stamp Auctions - Programme of Sales

(Continued from inside Back Cover)

- MAY 9, 10 Catalogue herewith.
- MAY 16, 17, 18 . . . EMPIRE SALE, comprising the outstanding 56-Vol. Commonwealth Collection and Specialised Iraq offered by order of the Executors of the late Col. H. C. Mason, O.B.E., F.R.P.S.L., of Cheam, Surrey. The "Col. C. J. Odling" Collection in 14 vols., also a Collection offered by order of Lt. Col. W. H. Samuel, of Brockenhurst, Hants.
- MAY 23, 24, 25 . . . FINE GENERAL SALE, with accent on modern issues, including the "Capt. Ernest Duveen" George VI and Elizabeth II Collection, and other important properties including a valuable and extensive Collection of Air stamps.
- MAY 30, 31, JUNE 1 . . . BRITISH COMMONWEALTH, ETC., including the remaining portions of the "Hodsell Hurlock" Barbados and Trinidad (one day); also a very fine British Commonwealth Collection from a Continental Collector.
- JUNE 13, 14 GENERAL SALE.

Lists of Prices Realised (2 days) 1/- ; (3 days) 2/-.

Fully illustrated Catalogues for above Sales, 1/- each, except where otherwise mentioned.

Twelve Months' Subscription for all London Catalogues and Lists of Prices Realised, 30/- post free.

Support the London International Stamp Collection



JULY 9 - 16
at the Festival Hall

A donation of not less than £2 brings you a Season Ticket, the three magazines, Exhibition Catalogue, etc.

Send a cheque now, to:

THE ORGANISING SECRETARY,
14, GOODWIN'S COURT, ST. MARTIN'S LANE, LONDON, W.C.2.

The Bond Street Stamp Auctions

Programme of Sales

at 1.30 p.m. each day

MARCH 21, 22 . . . BRITISH COMMONWEALTH, Etc., including the "Major C. H. A. Borradaile" Collection in 33 Vols., with choice Australia, Canada, Ceylon, Falklands, Gibraltar, GREAT BRITAIN, Jamaica, Newfoundland, New Zealand, Niger Coast, St. Helena, etc.

MARCH 28, 29 . . . THE VALUABLE USED COLLECTION OF
BRITISH COMMONWEALTH, Etc.
Offered by order of Arthur H. Gilbert Esq., at Lloyds, E.C.
Catalogue (5 photo-plates) 2/-.

APRIL 4, 5 . . . GENERAL SALE, including the "Charles Miller" Collection; a fine George VI and Elizabeth II Collection; the "H. G. Gilding" Collection; GREAT BRITAIN is prominent, and there are also fine Cyprus, Egypt, Falklands, Finland, Papua, St. Helena, etc. On both days there is an extensive range (over 90 lots in all) of Collections, etc., offered *en bloc*.

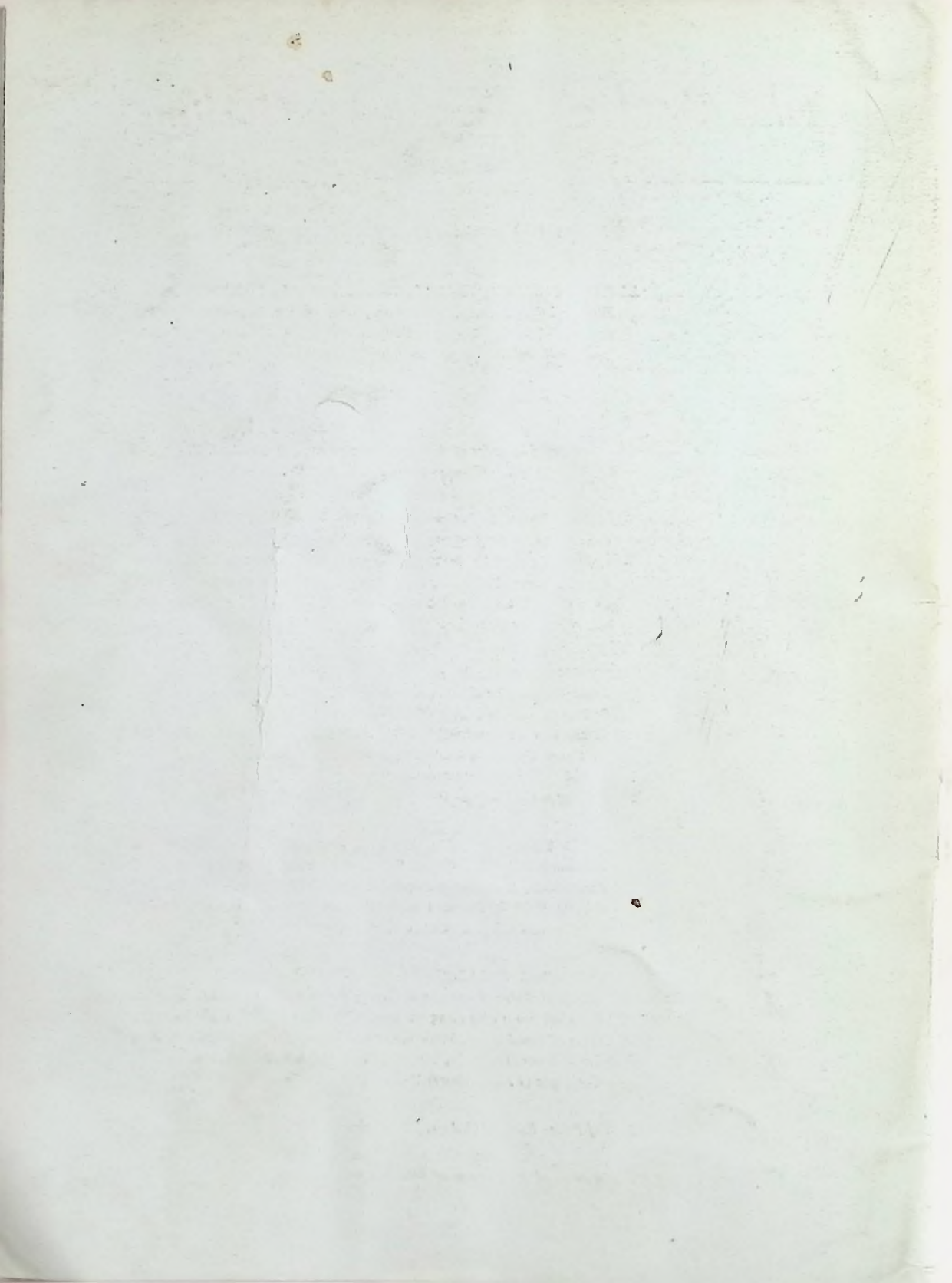
APRIL 11, 12 . . . FOREIGN COUNTRIES, including a very fine specialised Collection of DENMARK offered by order of V. A. Werner, Esq., of London, S.W.; also choice CLASSIC EUROPE, etc. offered by order of George Welsh, Esq., of Funchal, Madeira. Italian States on covers Switzerland with rare Cantonals (including a very fine "Double Geneva," etc.), United States, etc., are prominent.
Catalogue (10 photo-plates) 2/-.

APRIL 25, 26 . . . BRITISH COMMONWEALTH, Etc., comprising the "Sir Douglas MacInnes Shaw," the "M. Shneerson" and "D. C. Woodward" Collections; including Bahamas, BARBADOS, Canada, CAPE OF GOOD HOPE, Falkland Islands, Great Britain, Grenada, Malta, Newfoundland, ST. LUCIA, etc., etc.

MAY 2, 3 . . . A VALUABLE COLLECTION OF BRITISH COMMONWEALTH CLASSICS offered by order of George Welsh, Esq., of Funchal, Madeira. Included are outstanding sections, with many multiples, of Barbados, Cape of Good Hope, Mauritius, New Brunswick, Newfoundland, New South Wales, Tasmania, Victoria, Western Australia, etc., etc.
Catalogue (9 photo-plates) 2/-.

Lists of Prices Realised (2 days) 1/-; (3 days) (2/-)

For continuation of Programme of Sales see previous page.



SALE
2956-2957

List of

PRICE
1/-

PRICES REALISED

at the Sale of

The "W. S. Davy"

Commonwealth Classics on Covers

held on

May 9th and 10th, 1960

by

H. R. HARMER Ltd.

International Stamp Auctioneers

41, NEW BOND STREET, LONDON, W.1.

Telephone: Mayfair 0218. Telegrams: "Phistamsel, Wesdo, London."

LOT	£	s.	d.	LOT	£	s.	d.	LOT	£	s.	d.	LOT	£	s.	d.
1	21	0	0	21	44	0	0	41	170	0	0	61	7	0	0
2	13	0	0	22	130	0	0	42	25	0	0	62	—	—	—
3	21	0	0	23	52	10	0	43	46	0	0	63	20	0	0
4	15	10	0	24	36	0	0	44	6	0	0	64	24	0	0
5	23	0	0	25	77	10	0	45	26	0	0	65	6	0	0
6	25	0	0	26	115	0	0	46	15	0	0	66	6	10	0
7	60	0	0	27	36	0	0	47	110	0	0	67	145	0	0
8	11	0	0	28	110	0	0	48	25	0	0	68	57	10	0
9	8	10	0	29	42	0	0	49	15	0	0	69	55	0	0
10	11	10	0	30	260	0	0	50	44	0	0	70	16	0	0
11	15	10	0	31	—	—	—	51	44	0	0	71	80	0	0
12	10	0	0	32	10	0	0	52	18	0	0	72	30	0	0
13	40	0	0	33	46	0	0	53	28	0	0	73	95	0	0
14	87	10	0	34	22	0	0	54	92	10	0	74	27	0	0
15	14	0	0	35	31	0	0	55	32	0	0	75	11	0	0
16	16	10	0	36	30	0	0	56	18	0	0	76	16	0	0
17	18	10	0	37	20	0	0	57	—	—	—	77	31	0	0
18	16	10	0	38	21	0	0	58	11	0	0	78	10	0	0
19	33	0	0	39	72	10	0	59	28	0	0	79	24	0	0
20	16	0	0	40	37	0	0	60	155	0	0	80	15	0	0

SALES, MAY 9TH AND 10TH, 1960

LOT	£	s.	d.	LOT	£	s.	d.	LOT	£	s.	d.	LOT	£	s.	d.
81	18	10	0	133	17	10	0	185	39	0	0	237	36	0	0
82	22	0	0	134	57	10	0	186	20	0	0	238	600	0	0
83	42	0	0	135	15	10	0	187	11	0	0	239	250	0	0
84	57	10	0	136	27	0	0	188	6	10	0	240	210	0	0
85	12	0	0	137	67	10	0	189	20	0	0	241	22	0	0
86	18	0	0	138	7	10	0	190	14	0	0	242	48	0	0
87	330	0	0	139	34	0	0	191	31	0	0	243	400	0	0
88	85	0	0	140	13	10	0	192	—			244	77	10	0
89	90	0	0	141	22	0	0	193	7	0	0	245	22	0	0
90	52	10	0	142	14	10	0	194	16	10	0	246	42	0	0
91	21	0	0	143	7	0	0	195	21	0	0	247	23	0	0
92	17	10	0	144	26	0	0	196	22	0	0	248	8	0	0
93	46	0	0	145	9	10	0	197	15	0	0	249	13	10	0
94	27	0	0	146	25	0	0	198	9	0	0	250	135	0	0
95	—			147	—			199	13	0	0	251	23	0	0
96	17	0	0	148	16	10	0	200	10	0	0	252	36	0	0
97	6	10	0	149	44	0	0	201	12	10	0	253	35	0	0
98	11	0	0	150	62	10	0	202	—			254	13	0	0
99	6	10	0	151	10	0	0	203	—			255	24	0	0
100	16	0	0	152	12	0	0	204	95	0	0	256	16	0	0
101	15	0	0	153	31	0	0	205	70	0	0	257	31	0	0
102	12	0	0	154	19	10	0	206	80	0	0	258	44	0	0
103	13	0	0	155	8	10	0	207	500	0	0	259	44	0	0
104	31	0	0	156	15	10	0	208	82	10	0	260	16	10	0
105	27	0	0	157	10	0	0	209	31	0	0	261	72	10	0
106	30	0	0	158	14	0	0	210	80	0	0	262	52	10	0
107	10	0	0	159	10	0	0	211	135	0	0	263	155	0	0
108	70	0	0	160	11	10	0	212	72	10	0	264	100	0	0
109	19	0	0	161	10	0	0	213	—			265	12	0	0
110	50	0	0	162	42	0	0	214	33	0	0	266	38	0	0
111	120	0	0	163	14	0	0	215	72	10	0	267	165	0	0
112	36	0	0	164	18	10	0	216	13	10	0	268	17	10	0
113	210	0	0	165	31	0	0	217	11	10	0	269	10	10	0
114	155	0	0	166	17	0	0	218	26	0	0	270	27	0	0
115	35	0	0	167	28	0	0	219	67	10	0	271	48	0	0
116	20	0	0	168	16	0	0	220	77	10	0	272	12	10	0
117	52	10	0	169	46	0	0	221	12	10	0	273	13	10	0
118	40	0	0	170	23	0	0	222	31	0	0	274	26	0	0
119	12	0	0	171	82	10	0	223	20	0	0	275	95	0	0
120	80	0	0	172	31	0	0	224	7	0	0	276	11	0	0
121	46	0	0	173	40	0	0	225	36	0	0	277	—		
122	675	0	0	174	35	0	0	226	15	10	0	278	52	10	0
123	22	0	0	175	13	10	0	227	17	0	0	279	11	0	0
124	50	0	0	176	8	10	0	228	42	0	0	280	—		
125	29	0	0	177	17	10	0	229	170	0	0	281	—		
126	27	0	0	178	26	0	0	230	135	0	0	282	77	10	0
127	38	0	0	179	31	0	0	231	—			283	37	0	0
128	35	0	0	180	21	0	0	232	220	0	0	284	100	0	0
129	10	10	0	181	24	0	0	233	21	0	0	285	145	0	0
130	77	10	0	182	90	0	0	234	23	0	0	286	13	0	0
131	16	0	0	183	18	10	0	235	17	10	0	287	280	0	0
132	82	10	0	184	18	0	0	236	39	0	0	288	27	0	0

SALES, MAY 9TH AND 10TH, 1960

LOT	£	s.	d.	LOT	£	s.	d.	LOT	£	s.	d.	LOT	£	s.	d.
289	57	10	0	309	32	0	0	329	72	10	0	348	24	0	0
290	10	10	0	310	21	0	0	330	—	—	—	349	8	10	0
291	115	0	0	311	39	0	0	331	12	0	0	350	70	0	0
292	46	0	0	312	34	0	0	332	9	0	0	351	13	0	0
293	195	0	0	313	16	0	0	333	36	0	0	352	27	0	0
294	52	10	0	314	29	0	0	334	—	—	—	353	23	0	0
295	270	0	0	315	14	0	0	335	13	10	0	354	9	0	0
296	14	0	0	316	40	0	0	336	24	0	0	355	22	0	0
297	100	0	0	317	27	0	0	337	34	0	0	356	28	0	0
298	18	0	0	318	10	0	0	338	26	0	0	357	32	0	0
299	15	0	0	319	42	0	0	339	—	—	—	358	14	0	0
300	95	0	0	320	62	10	0	340	19	0	0	359	—	—	—
301	72	10	0	321	67	10	0	341	19	0	0	360	5	10	0
302	190	0	0	322	240	0	0	342	28	0	0	361	8	10	0
303	28	0	0	323	42	0	0	343	27	0	0	362	75	0	0
304	—	—	—	324	115	0	0	344	27	0	0	363	18	0	0
305	34	0	0	325	52	10	0	345	15	10	0	364	15	0	0
306	16	0	0	326	22	0	0	346	22	0	0	365	16	0	0
307	42	0	0	327	8	0	0	347	—	—	—	366	33	0	0
308	28	0	0	328	42	0	0								

Total for Sale £17,211 10 0

* A remarkably successful sale for a collection made some 30 years ago for about £3,300. Many lots realised ten times and more their original cost. Lot 293, bought for 65/-, brought £195!

Corrections to Catalogue

Lot 137 : Read " Plate Ib ", not Plate Ia.

Lot 301 : Read " 6 cents black ", not " 4d. black ".

* The owner writes:

" I want to say that I am delighted with the result of the sale — you did very well for me indeed!"

*Have you sent in your bids for
the following forthcoming Sales?*

MAY 30, 31, JUNE 1 : EMPIRE SALE. FIRST DAY—The
“Hodsell Hurlock” Barbados and Trinidad. SECOND and
THIRD DAY—Fine British Commonwealth.

JUNE 13, 14 : “ALL-WORLD” SALE, with emphasis on Brazil,
France, German States, GREAT BRITAIN, New South
Wales, New Zealand, United States, etc., etc.

JUNE 20, 21 : BRITISH COMMONWEALTH, Etc., notably
Ascension, Barbados, Bermuda, Ceylon, Cyprus, Gambia,
Gibraltar, GREAT BRITAIN, Malta, Newfoundland, New
Zealand, Sierra Leone, etc.

Support the London International Stamp Exhibition

JULY 9 - 16
at the Festival Hall

A donation of not less than £2 brings you a Season
Ticket, the three magazines, Exhibition Catalogue, etc.

Send a cheque now, to:

THE ORGANISING SECRETARY,
13, GOODWIN'S COURT, ST. MARTIN'S LANE, LONDON, W.C.2.