

9.4.2.

3577-3578

BRITISH AMERICA



MARCH 19, 20
1969



HARMERS of Bond Street

H. R. Harmer Ltd., London, W.1.

CONDITIONS OF SALE OF H. R. HARMER LTD.,

SUBJECT TO WHICH ALL LOTS ARE OFFERED AT THIS AUCTION

Notice. H. R. Harmer Ltd., the auctioneers, exercise great care to ensure that all statements as to cancellation, centring, colour, condition, date of issue or postmark, gum, paper, printing, provenance, quality, sheet position, status, use and watermark, etc., in the lot descriptions are reliable and accurate, and that each item, unless the contrary is indicated, is genuine and authentic. The statements, however, are not intended to be, are not and are not to be taken to be statements of fact or representations of fact. They are statements of the opinion of the auctioneers, and attention is particularly drawn to clause 6 below.

1.—The highest bidder for each lot shall be the purchaser thereof. Each lot is put up subject to any reserve price imposed by the vendor. If any dispute arises as to the highest bidder the auctioneer shall have absolute discretion to determine the dispute and may put up again and re-sell the lot in respect of which the dispute arises.

2.—(a) The bidding and advances shall be regulated by and at the absolute discretion of the auctioneer, and he shall have the right to refuse any bid or bids. (b) The purchaser of each lot shall immediately on its sale if required by the auctioneers give to them the name and address of the purchaser and pay to them at their discretion the whole or part of the purchase money. If the purchaser of any lot fails to comply with any such requirement the auctioneers may put up again and re-sell the lot; if upon such re-sale a lower price is obtained than was obtained on the first sale the purchaser in default on the first sale shall make good the difference in price and expenses of resale which shall become a debt due from him. (c) Where an agent purchases on behalf of an undisclosed client such agent shall be personally liable for payment of the purchase price to the auctioneers and for safe delivery of the lot to the said client.

3.—(a) The auctioneers reserve the right to bid on behalf of clients and vendors, but shall not be liable for errors or omissions in executing instructions to bid. (b) The auctioneers reserve the right before or during a sale to group together any lots belonging to the same vendor, to split up and to withdraw any lot or lots at the auctioneers' absolute discretion and without giving any reason in any case.

4.—Each lot shall be at the purchaser's risk from the fall of the hammer and shall be paid for in full before delivery and taken away at his expense by a purchaser in the United Kingdom within seven days of the date of sale and by a purchaser overseas within 14 days or such longer time as shall be agreed in writing between the auctioneers and the purchaser. If any purchaser fails to pay in full for any lot within the said time such lot may at any time thereafter at the auctioneer's discretion be put up for sale by auction again or sold privately; if upon such resale a lower price is obtained than was obtained on the first sale the purchaser in default on the first sale shall make good the difference in price and the expenses of resale which shall become a debt due from him.

5.—The auctioneers shall act as agents only and shall not be liable for any default of the purchaser or vendor.

6.—(a) Each lot shall be put up for sale as exhibited, with all faults and errors of description. Neither the auctioneers nor the vendor shall give any warranty to any purchaser or be liable for any fault or error of description or lack of genuineness or authenticity of any lot or item in any lot whether or not exhibited with any certificate of opinion or other supporting document or mark. (b) Notwithstanding paragraph (a) of this clause, if after the sale the purchaser of a lot shall prove it to be not genuine or not authentic or wrongly described the purchaser shall be at liberty to return the lot provided that he within 21 days of the date of the sale gives notice in writing to the auctioneers of intention to question as the case may be the genuineness or authenticity or description of the lot AND within 14 days after giving such notice (or in exceptional cases, such longer time as in the absolute discretion of the auctioneers they may in writing allow) returns to the auctioneers at their sale-rooms the lot in the same condition as at the date of sale. The onus of proving a lot to be not genuine or not authentic or wrongly described shall lie with the purchaser. Proof of the inability of a recognised expert committee to express a definite opinion shall not discharge such onus. If a lot is sold with a certificate of opinion of a recognised expert committee that the lot is genuine or authentic, a subsequent certificate of such committee that the lot is not genuine or not authentic shall discharge such onus. In the case of conflict of opinion as to genuineness or authenticity or description the auctioneers shall have the right to rely on the opinion of an expert reasonably regarded by them to be a reliable authority. (c) If the purchaser of a lot shall discharge the onus in compliance with paragraph (b) of this clause the auctioneers shall rescind the sale and repay to the purchaser the purchase price paid by him. (d) Notwithstanding paragraph (c) of this clause no lot may be returned if subsequent to the sale it has been immersed in water or treated by any other process unless the auctioneers' permission to subject the lot to such immersion or treatment has first been obtained in writing. (e) A lot listed under "Collections and Various" or a lot stated to comprise or contain a collection, issues or undescribed stamps shall be put up for sale not subject to return and shall be taken by the purchaser with all (if any) faults, lack of genuineness and authenticity, and errors of description and number of stamps in the lot, and the purchaser shall have no right to return the lot.

7.—If a purchaser fails to comply with any condition of sale the damages recoverable by the auctioneers from him shall include any loss arising on, and the expenses of, resale.

VIEWING TIMES FOR THIS SALE

Lots may be viewed on Tuesday, Wednesday, Thursday and Friday, preceding days of Sale from 10 a.m. to 4 p.m.; Saturday 10 a.m. to 12 noon, and on days of Sale, 10 a.m. to 1 p.m.

SALES 3577—3578

AT 1.30 P.M.

Catalogue

WITH SIX PHOTO-PLATES AND THREE INSET ILLUSTRATIONS)

of

BRITISH AMERICA

including

A Collection of Jamaica

Offered by order of Lt. Col. S. Attenborough, of Canterbury, Kent

British America

Offered by order of N. Hadcock, Esq., F.R.P.S.L., of Bucklebury, Berkshire

and selected properties of other owners

To be sold by Auction on

**Wednesday and Thursday,
MARCH 19th and 20th, 1969**

at 1.30 p.m. each day

by

H. R. Harmer Ltd.

*International Stamp Auctioneers***41, NEW BOND STREET, LONDON, W1A 4EH**Telegrams: "*Phistamsel London, W.1*"

Telephone: 01-629 0218

C. H. C. Harmer, I. J. Glassborow, R. N. Haffner, Auctioneers

Price—Five Shillings (9/- with List of Prices Realised)

SYMBOLS USED IN THIS CATALOGUE

☆ **unused** (without gum unless otherwise stated) : **Part o.g.** (unused with part original gum) : **O.G.** (unused with full original gum slightly disturbed or alternatively having a previous mount) : **Mint** (unused with original gum in Post Office state and mounted with a peelable hinge) : **Unmounted mint** (as mint but never hinged).

- | | | |
|--|------------------|------------|
| ○ used. | E Essay. | P Proof. |
| ⊞ block of four. | △ used on piece. | ✚ Air Mail |
| ☒ Used on letter, envelope, card, etc. | R Reprint | |
| ⊞ Block larger than four. | S Specimen. | |

The number of stamps or pieces in the Lot is given in brackets at the end of the description.

The quotations in the right-hand column of this Catalogue are from Stanley Gibbons' 1969 Catalogue and Supplements current at the time of lotting, unless preceded by the letter "E" when they indicate our estimate of the approximate market value.

ARRANGEMENT OF CATALOGUE

THIRD DAY — Wednesday, March 19th, 1969

BRITISH AMERICA

Lot Nos.		Lot Nos.	
500-545	Anquilla to Barbuda	594-662	CANADA
546-571	BERMUDA	663-683	Cayman Is. to Dominica
572-593	Br. Guiana to Br. Honduras	684-741	FALKLAND ISLANDS

FOURTH DAY — Thursday, March 20th, 1969

BRITISH AMERICA (continued)

Lot Nos.		Lot Nos.	
742-804	Grenada to Jamaica	891-945	Nova Scotia to Virgin Islands
805-825	Leeward Is. to Nevis	946-948	Miscellaneous
826-890	NEWFOUNDLAND		

THIRD DAY OF SALE

WEDNESDAY, MARCH 19th, 1969

AT ONE-THIRTY P.M. PRECISELY

The quotations in the right-hand column of this Catalogue are from Stanley Gibbons' 1969 Catalogue and Supplements, unless preceded by the letter "E" when they indicate our estimate of the approximate market value.

BRITISH AMERICA

Lot No.		Cat. Value
500 ○	ANGUILLA: 1967, INDEPENDENCE SET, S.G. 1-16, LIGHTLY CANCELLED, FINE (for four values see photo-plate I) (16)	£1000
501 ☆	— ditto, ditto 1c., 2c., 3c., S.G. 2, 3, 4, mint, 1c. has slight vertical crease, otherwise very fine (3)	£26
502 ☆	— ditto, ditto 5c., S.G. 6, mint, has horizontal crease, otherwise fine (1)	£50
503 ☆	— ditto, ditto 10c., S.G. 8, mint, very fine (1)	£15
504 ☆	— ditto, ditto 25c., S.G. 11, mint, fine (1)	£15
505 ☆	— ditto, ditto \$2.50, S.G. 15, a very rare mint copy, centred slightly to lower-left and has two blunt perfs. (see photo-plate I) (1)	£225 used

ANTIGUA

506 ☆	1862, rough perf. 14 to 16 6d. blue-green, S.G. 1, part o.g., centred to top-left, slightly soiled, otherwise fine (1)	£70
507 ☆	— ditto 6d. blue-green, 1863-67, rough perf. 14 to 16 1d. (three shades), S.G. 1, 5-7, all unused, first centred to top-left and has two corners rounded, 1d. vermilion has two small stain spots (4)	£91

SATURDAY MORNING CLOSING

Our Offices will be OPEN only on Saturday mornings preceding a sale the following week, as noted.

OPEN

February 1st
February 15th
March 1st
March 15th
March 29th

CLOSED

February 8th
February 22nd
March 8th
March 22nd
April 12th

Our Offices will also be closed for Easter on April 4th, 5th and 7th.

Lot No.	ANTIGUA (continued)	Cat. or Est. Value
508 ☆	1884-86 1/- mauve, S.G. 30, part o.g., well-centred and fine but for creased corner perf. (1)	£28
509	The small Collection of Queen issues, including 1863-67 1d. (3), 6d. (2), 1879 2½d., 4d., 1882 2½d., 4d., 1884-86 6d., 1/-, etc., some part o.g. or unused, fair to fine, some small faults (22)	E £40
510	The Collection of Queen issues, including 1863-67 1d., 6d. (6), 1884-86 2½d. with slanting foot to "2", a good range of other issues with values to 6d., etc., majority used, some have small faults but mostly fair to fine (28)	E £20 to £25
511 ☆	1903-09 set, only one 1d., S.G. 31-40, all part o.g., 2/- has corner crease, 5/- small stain (10)	£28
512 ☆	— ½d. (3), 1d. (3), 2d. (3), 2½d. (3), 3d. (2), 6d. (3), 2/6 (2), 1908-17 ½d. (3), 1d. (3), 2d. (3), 2½d. (3), 3d. (3), 6d. (3), 1/- (4), 2/-, 1913 5/-, all part o.g., majority fine, a few with slight faults (43)	£55 13s.
513 ○	— 5/-, S.G. 40, lightly cancelled, centred slightly to right, a little soiled, otherwise fine (1)	£14
514	The Collection, issues from 1903 to 1929, including 1903-09 to 5/- (discoloured), 1908-17 to 2/-, 1913 5/-, 1921-29 to 5/-, some o.g., fair to fine (43)	E £19
515 ☆	1913 5/-, 1921-29, Mult. 3d. to 2/6, Script set except 1d. carmine-red, all o.g. or part o.g. (25)	£24 6s.
516 ☆	1932, Tercentenary set, S.G. 81-90, all o.g. or part o.g., 5/- has two stains on perfs., others fine (10)	£40
517 ○	— ditto, used set, few perfs. short, otherwise fine (10)	£45
518 ☆	1967, Treaty of Breda 15c., variety wmk. Crown to right, S.G. 206Ei, a very fine mint block of nine from lower-right corner of sheet (9)	£90 +

BAHAMAS

519 ○	1862, perf. 11½, 12 1d., 4d. and 6d., S.G. 8, 10, 11, all used, some perfs. clipped or ragged, fair to fine (3)	£77
520 ○	— Perf. 13 6d. lavender-grey, S.G. 19, a used copy of good colour, centred to top-left, has corner perf. creased and another blunt (1)	£25
521 ☆	1883 4d. on 6d., S.G. 45, small part o.g., centred to top-left, fine (see photo-plate I) (1)	£80
522 ☆	1884-98 1d. (3), 2½d. (2), 4d., 6d., 1/-, 5/-, 1901-10, Mult. 1d., 1903 5d., 2/-, 3/-, 1906-11 set, 1920 set, 1921-29 1d., 5d., 2/-, 3/-, 1930 set, etc., all o.g. or part o.g., mostly fine (37)	E £18
523 ☆	— £1, S.G. 57, o.g., centred to left, some perfs. missing or short (see photo-plate I) (1)	£45
524 ☆	— Another copy, S.G. 57, part o.g., centred to top-left (see photo-plate I) (1)	£45
525	The useful Collection of Queen issues, including a damaged copy of the 1859, thick paper 1d., 1862, perf. 13 1d. (2), 1863-80, with various perfs. and shades, 1884-98 to 5/-, part o.g., etc., unused and used, a few cleaned or with small faults (43)	E £45 to £50
526 △	1902 set to 5/-, S.G. 60-67, all lightly cancelled and on small pieces (7)	£27 16s.
527 ☆	— Set, S.G. 60-68, all part o.g., £1 centred to top, a little soiled and faint corner crease (for £1 see photo-plate I) (8)	£100
528 ☆	— 5/-, S.G. 67, a mint horizontal pair from left of sheet, centred a little to lower-left, fine (1)	£24
529 ☆	— £1, S.G. 68, o.g., fine (see photo-plate I) (1)	£90



EX 500



505



521



523



524



EX 527



529



534



535



EX 561



562



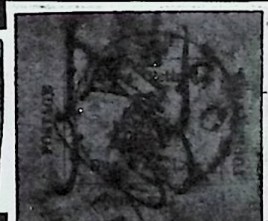
EX 563



567



572



574



540



547



550



552



578

Lot No.	BAHAMAS (continued)	Cat or Est. Value
530 ☆	1912-19 ½d. (2), 1d. (4), 2d., 2½d. (2), 4d. (2), 6d., 1/- (2), 5/- (2), £1 (perfs. slightly damaged and small tear at top), all used, majority fine . (17)	£53 16s.
531 ☆	— £1 dull green and black, S.G. 91, o.g., centred slightly to top-right, fine . (1)	£32
532 ☆	— Another copy, part o.g., tiny thinning, otherwise fine (1)	£32



Ex. 533

533	THE COLLECTION IN RED "ORIEL" ALBUM, ISSUES TO 1930, including 1859, thin paper 1d. (block of four, horizontal pair, single, part o.g., two singles, used), 1860 1d., 1861 1d. (2), 4d., 6d. (2), 1862 1d. (11), 4d. (2), 6d. (4), cover addressed to Delaware bearing 4d. (horizontal pair), 1863-80 1d., sixteen singles, one aniline, o.g. block of four, 4d. (11), 6d. (11), 1/- (used blocks of twenty-four, twelve and eight, two singles), 1882 1d. (4), 4d. (one unused, four used), 1/- (part o.g. block of four, eight singles), 1883 4d. on 6d., 1884-98 to £1, 1902 set, 1912-19 to £1 (2), etc., PART O.G., UNUSED OR USED, MANY FINE. A USEFUL LOT (see photo). (209)	E £450
533A	The Collection, issues to 1927, including 1861 1d., 1862 4d., a range of the wmk. CC issues, 1884-98 5/-, £1, Edwards, 1912-19 5/-, 1918, War Tax 1/-, 1920 set, 1921-29 5/-, etc., some o.g. or part o.g., a few with stains, fair to fine (93)	E £40

BARBADOS

534 ○	1873 5/- dull rose, S.G. 64, used, fine (see photo-plate I) (1)	£45
535 ○	— Another fine used copy, centred to lower-left (see photo-plate I) (1)	£45
536 ☆	1875-78, perf. 14 6d. chrome-yellow, S.G. 79, part o.g., centred slightly to top-right, very fine (1)	£12
537 ☆	— ditto 6d. yellow, S.G. 80, part o.g., centred slightly to top, fine (1)	£16

Lot No.

BARBADOS (continued)

Cat. or Est. Value

- 538 The Collection of Britannia type, including a few imperf., 1861-70, rough perf., 1873 6d., imperf. pair, 1873 (June) 3d., 1873 5/- dull rose, etc., all used except the imperf. pair, poor to fine . (47) E £32
- 539 ☆ 1882-86 5/- bistre, S.G. 103, a slightly off-centre o.g. copy, fine but for tiny thin spot (1) £40
- 540 ☆田 1897-98, blued paper 5d., S.G. 129, a part o.g. block of four, diagonal crease through three stamps, otherwise fine. With B.P.A. certificate (1961) (see photo-plate I) (4) £120
- 541 The very useful Collection of Queen issues, including a good range of Britannia types with imperfs., 1860, pin-perf. 12½ ½d., 1861-70 issues to 1/- (3), 1873 3d. brown-purple, 1873 5/- dull rose, 1875-78 to 1/- (8), 1882-86 to 1/-, 1892-99 set, 1897-98, white paper set, etc., many perfs. and shades, unused and used, majority fair to fine (119) E £75 to £100
- 542 ☆ 1912 ½d. (2), 1d., 2d., 3d., 4d., 6d., 1/-, 2/-, 3/-, 1916-20 ½d., ½d. (2), 1d. (2), 4d., 1/-, 2/-, 3/- (2, one with inverted wmk.), 1918 4d., 3/-, 1920-21 set, all o.g. or part o.g., fine (34) £70 15s.
- 543 ○ — ½d. (2), ½d. (2), 1d. (3), 2d. to 3/-, 1916-20 ½d. (3), ½d. (3), 1d. (3), 2d., 2½d., 3d. (2), 4d. to 3/-, 1918 4d., 3/-, 1920-21 set, all used, many fine, a few with small faults (46) E £25 to £30
- 544 The Collection, issues from 1882 to 1935, including 1882-86 to 5/-, 1892-99 to 2/6, 1903 2/6, 1904-05 to 2/6, 1909-10 to 1/-, 1921-24 3/-, 1925-35 to 2/-, etc., also a few Barbuda, some o.g. or part o.g., fair to fine, a few with small stains (119) E £30

-
- 545 ☆ BARBUDA: 1922 set, S.G. 1-11, all o.g. or part o.g., 5/- has tiny thinning, otherwise fine (11) £21

BERMUDA

- 546 ☆ 1865-1903 3d. yellow-buff, S.G. 5, part o.g., centred to top-left, good appearance but has faint gum crease, some black marks on reverse and a few perfs. stained or blunt (1) £50
- 547 ☆ — 3d. orange, S.G. 5a, large part o.g., centred slightly to top, good colour and fine but for a few blunt or pulled perfs. (see photo-plate I) . (1) £50
- 548 ☆ — 6d. dull purple, S.G. 6, part o.g., centred to left, fine appearance but has vertical crease and some perfs. clipped (1) £25
- 549 — The useful Collection of this issue, including perf. 14 3d. (2), 6d. dull purple (unused but damaged), other unused items with a block of four of the 6d. and a strip of four of the 1/-, perf. 14 x 12½ 3d. (2, one of unused appearance), a range of numeral pmks., etc., unused and used, also three forgeries, majority fair to fine (67) E £20 to £25
- 550 ○ 1874, "P" and "R" different type 3d. on 1/- green, S.G. 13, an off-centre used copy with straight edge at left. With "Royal" certificate (1960) (see photo-plate I) (1) £60
- 551 ○ — ditto, another used copy of the same stamp, also Roman Capitals 3d. on 1/- used, S.G. 13, 14, both off-centre, former with straight edge at left and damaged perfs. at right, latter has some perfs. trimmed. Both with "Royal" certificates (1960) (2) £125
- 552 ○ — "P" and "R" same type 3d. on 1/-, S.G. 13b, an off-centre used copy, fine but for some damaged perfs. With "Royal" certificate (1947) (see photo-plate I) (1) £90
- 553 ○ — Roman capitals 3d. on 1/-, S.G. 14, a lightly pmkd. copy, centred to left, fine appearance but has closed internal tear (1) £65

Lot No.	BERMUDA (continued)	Cat. or Est. Value
554 ○	1875 1d. on 2d., S.G. 15, a used copy, centred to lower-right, some blunt or clipped perfs. With "Royal" certificate (1946) (1)	£30
555 ☆	— 1d. on 3d., S.G. 16, a thinned copy with small part o.g., has a few blunt perfs. at top. With "Royal" certificate (1944) (1)	£30
556 ○	— The same stamp, lightly cancelled, centred slightly to left and fine but for a few blunt perfs. With "Royal" certificate (1944) (1)	£35
557 ○	— 1d. on 1/-, S.G. 17, centred to top-left, fine used. With "Royal" certificate (1944) (1)	£15
558	1875 to 1910, the Collection, including 1875 1d. on 1/- (2, one reperforated), 1884-96 to 1/- (4), 1902-04 and 1906-09 sets, a few Specimens, pmks., blocks, etc., o.g. and used, majority fair to fine (140)	E £12 to £15
559	— The Collection of Queen issues, including 1865-1903, perf. 14 3d. (3), 6d. dull purple, perf. 14 x 12½ 3d., a slightly defective copy of the 1875 1d. on 1/-, 1883-96 to 1/- (3), etc., unused and used, mostly fair to fine (37)	E £15 to £20
560 ☆	1918-20 2/- (7), 2/6 (5), 4/- (3), 5/- (2), all part o.g., mostly fine . . . (17)	£28 5s.
561 ☆	— Set, S.G. 51b-55, all part o.g., 10/- soiled on reverse, £1 has few perfs. a little short at right (for £1 see photo-plate I) (6)	£53 10s.
562 ○	— £1 purple and black on red, S.G. 55, a fine used copy, centred slightly to left (see photo-plate I) (1)	£50
563 ☆	1922-34 2/-, 2/6 (two shades), 10/- and 12/6, all o.g. or part o.g., 2/- has horizontal crease, others fine but for a few blunt perfs. (for 12/6 see photo-plate I) (5)	£56 12s.
564 ○	— 2/-, 2/6 (2), 10/-, 12/6, all used, four on small pieces, fine . . . (5)	£70 2s.
565 ☆	— 10/- (small thinning), 12/6 (few perfs. a little short), part o.g. . . . (2)	£50
566 ○	— 10/- green and red on deep emerald, S.G. 92a, neat Ireland Island cancellation of 1937, fine but for a few blunt perfs. (1)	£24
567 ☆	— 12/6 grey and orange, S.G. 93, large part o.g. and very fine (see photo-plate I) (1)	£32
568	The Collection of George V issues, including 1918-20 to 5/-, 1920-21 set, 1921, Tercentenary set, two Jubilee sets, etc., unused and used, majority fair to fine (140)	E £10
569	The Collection, issues to 1934, including 1865-1903 3d. (2), 1874, "P" and "R" different type 3d. on 1/-, 1875, the three surcharges, 1918-20 2/-, 2/6, 4/-, 5/-, 1920-21 and 1921 sets, etc., some o.g. or part o.g., poor to fine (84)	E £40
570 ☆	1938-53 10/- green and deep lake on green, S.G. 119, large part o.g. and fine (1)	£18
571	The Collection of George VI and E.II issues in red peg-fitting album, including 1938-53 to £1 (5), with part o.g. and used copies of the purple and black on red shade, Silver Wedding £1 (2), May 1948 5/- booklet, 1953-62 set, o.g. and used, covers, etc., unused and used, majority fine (224)	E £25
572 ○	BRITISH GUIANA: 1850-51 12c. blue, S.G. 5, initialled "JBS", a used copy, margins at places, slightly creased and has small thinning. Cat. £225 (see photo-plate I) (1)	E £50

Lot No.		Cat. or Est. Value
573 ○	BRITISH GUIANA: 1852 1c., small margins at places, 4c., large margins, S.G. 9, 10, both used but with defects, the 4c. extensively rubbed. Cat. £1150 (2)	E £15 to £20
574 ○	— 1856 4c. BLACK ON MAGENTA, S.G. 24. AN EXTREMELY LARGE SQUARE-CUT COPY (35mm. x 32mm.), INITIALED "BGC". USED, with black and red circular pmks., fine colour but has two small holes and suspicion of filled-in pinhole. VERY RARE. Cat. £850 With "Royal" certificate (1953) (see photo-plate I) (1)	E £150 to £200
575	— The useful Collection of Ship types to 1875, including the reprint of the 1852 1c., 1853-59 4c. (2), 1856 4c. magenta (badly defective and with corners cut, affixed to piece to which it probably does not belong), 1860 4c., unused, 1861 1c. (2), 1862 1c. brown, unused, 1863 to 24c., 1863-64 to 48c. (4), with three unused shades of the 6c., 1866 to 48c. (4), 1875 to 24c. (2), etc., mostly used, majority fair to fine with many better items (98)	E £70 to £80
576	— 1875 to 1899, the Collection, including a range of Ship types with some surcharges, 1882 (May) set, unused, 1888-89 to 72c., 1889 to 96c. (2), 1890 1c. on \$1 with faint double surcharge, 1898, Jubilee set, also 1862 type-set 4c., etc., unused and used, mostly fair to fine (87)	E £20 to £25
577 ☆田	1890 1c. on \$2, variety surcharge double, S.G. 208a, an o.g. block of four from right of sheet, fine (4)	£48
578 ☆	— 1905 \$2.40, S.G. 251, part o.g., a trifle rubbed, fine (see photo-plate I) (1)	£55
579	— The Collection, issues to 1927, including 1853-59 4c., a range of Ship types with 1861 1c., 1862 1c., 1862 1c., 2c., 4c., surcharges, and later values to 96c., some o.g. or part o.g., poor to fine . (169)	E £38

THE H. R. HARMER ORGANIZATION

invites you to view the Great Britain, British Guiana, Ceylon and India portions of the DALE-LICHTENSTEIN COLLECTION at their Bond Street offices on February 6 and 7. The auctions take place in New York on February 17, 18 and 19.

BRITISH HONDURAS

580 ○	1872-79, perf. 14 6d. rose, S.G. 15, used, has slight blue mark on surface, small crease, otherwise fine (see photo-plate VI) (1)	£23
581 ○	1882-87 6d., 1/-, S.G. 21, 22, used, both have few perms. missing or short, otherwise fine (2)	£35
582	1886 to 1891, the Collection, including 1866 1d. (2), 6d., 1/-, 1872-79, perf. 12½ to 1/- (2), 1882-87 to 4d., 1888-89, perf. 14 2c. on 6d., 3c. on 3d., few bisects on small pieces, large surcharge to 50c. on 1/-, etc., chiefly used, mixed condition (38)	E £40
583 ○	1888-89, wmk. CC, perf. 12½ 2c. on 6d., S.G. 23, used, a trifle rubbed, fine. With B.P.A. certificate (1936) (1)	£14
584 ○	— ditto, ditto 3c. on 3d., S.G. 24, a used copy, centred to lower-left, has slight horizontal crease, otherwise very fine. Rare. With "Royal" certificate (1929) (see photo-plate VI) (1)	£225

Lot No.	BRITISH HONDURAS (continued)	Cat. or Est. Value
585 ○	1888-89, perf. 14 50c. on 1/-, S.G. 30, used, has few perfs. missing or short, has slight crease and minute tear at top. With B.P.A. certificate (1936) (see photo-plate VI) (1)	£50
586 ○	1891-98 set, S.G. 51-65, with shades, used, usual small faults . (15)	£84 17s.
587 ○	1899, "REVENUE", 12mm. 5c., 10c., 50c., 11mm. 5c., 25c., 50c. and 1900-01 5c., 10c., S.G. 66A, 67A, 69A, 66B, 67B, 69B, 78, 79, used, few small faults (8)	£27 6s.
588	The useful Collection of Queen issues, including 1866 set, 1872-79 1/- (3) and most lower values, 1882-87 set (6d. part o.g., others used), some 1888-89 surcharges, 1891-98 to \$1, etc., unused and used, mostly fair to fine (62)	E £30
589 ○	1902-04, 1905-07, 1908-10 sets, S.G. 80-100, used, mostly fine . (17)	£78 2s.
590 ○	1913-21 \$5, S.G. 110, lightly cancelled, very fine (see photo-plate VI) (1)	£50
591 ○	1913 to 1953, the Collection, including 1913-21 to \$2, 1922-33 to \$2, 1938-47 to \$5, 1948, Silver Wedding \$5 (2), etc., all used, mostly fine (105)	E £20 to £25
592 ○	1922-33 \$5, S.G. 125, tied to small piece by light circular dated cancellation, fine (see photo-plate VI) (1)	£55
593	The Collection, issues to 1931, including 1866 1/-, 1872-79 to 1/- (2), surcharges, 1891-98 to \$2, Edward and George V issues, some o.g. or part o.g., fair to fine (90)	E £15

CANADA

594 ○	1851, laid paper 3d. red, S.G. 1, bars type cancellation, good to large margins, fine (see photo-plate II) (1)	E £20
595 ○	— ditto 3d. orange-vermilion, S.G. 1a, a very fine lightly cancelled copy from top of sheet, small margin at left but large other sides (see photo-plate II) (1)	E £20 to £25
596 ○	— ditto 3d. orange-vermilion, S.G. 1a, concentric circles cancellation, from left of sheet, large margins at top and at bottom, close at right, fine (see photo-plate II) (1)	E £20
597 ○	— ditto 6d. slate-violet, S.G. 2, blue cancellation, large margins, fine but for diagonal crease at top-right. With "Royal" certificate (1961) (see photo-plate II) (1)	E £20

1852-57

598 ☆	Thin wove paper 3d. red, S.G. 6, part o.g., large margins, trace of gum thinning, very fine (see photo-plate II) (1)	E £30 to £40
599 ○	— 3d. red, dots type pmk., margins all round, large three sides, fine but for faint marginal corner crease at top-left. With "Royal" certificate (1963) (see photo-plate II) (1)	E £14
600 ○	— 3d. deep red, S.G. 7, a used copy, creased at top, otherwise fine (see photo-plate II) (1)	E £6
601 ○	— Another copy, showing major re-entry (No. 47), concentric circles cancellation, small to large margins, fine but for slight horizontal crease (see photo-plate II) (1)	E £17 to £20
602 ○	Medium hard wove paper 3d. red, S.G. 10, bars type cancellation, large margins, showing portion of adjoining stamp at top, very fine but for small stains (see photo-plate II) (1)	E £8



CANADA (continued)

Lot No.	1852-57	Cat. or Est. Value
603	○ Medium hard wove paper 3d. red, a vertical pair, concentric circles pmks., small to very large margins, showing portion of adjoining stamp at top, fine (see photo-plate II) (2)	E £20 to £25
604	○ — 3d., two used copies, both with margins all sides, fine (2)	E £12 to £15
605	○ — 6d. slate-violet, S.G. 12, lightly cancelled, large margins and very fine (see photo-plate II) (1)	E £40 to £50
606	○ — Another used copy, small to large margins, tiny natural paper flaw, fine (see photo-plate II) (1)	E £25
607	○ — 6d. greenish grey, S.G. 13, pmk. a little smudgy, close at top-right, good to large margins other sides, fine but for faint corner crease (see photo-plate II) (1)	E £15 to £20
—		
608	○ 1855, thin wove paper 10d. bright blue, S.G. 20, lightly cancelled, small to large margins all round (see photo-plate II) (1)	E £20 to £25
609	○ 1857 7½d. deep yellow-green, S.G. 22a, lightly cancelled, large margins three sides, showing portion of adjoining stamp at top, slightly cut-into at lower-right, otherwise fine (see photo-plate II) (1)	E £50 to £60
610	○ — 7½d. deep yellow-green, small to good margins all round, bars cancellation, fine but for minute tear at lower-right (see photo-plate II) (1)	E £25 to £30
611	○ — 7½d. deep yellow-green, numeral cancellation, close at top, slightly cut-into at top-right side, large margins at left and at bottom, showing small portion of marginal imprint, slightly creased at top-left corner (see photo-plate II) (1)	E £20 to £25
612	○ 1857, stout hard wove paper ½d. deep rose, S.G. 23, small to very large margins all round, showing portions of adjoining stamps at left and right, bars cancellation, fine appearance but has minute surface defect and corner crease at bottom (1)	E £5
613	○ 1858-59, perf. 11½ 3d. red, S.G. 26, black numeral and traces of green cancellations, centred to lower-right, fine (see photo-plate II) (1)	£35
614	○ The Collection of "Pence" type, comprising imperf. ½d. (2), 3d. (7), 6d. (2), 7½d., 10d. (4), shades, papers, and perf. ½d. (2, one badly damaged), 3d., all used except one imperf. ½d., mostly with margins at places, poor to good (19)	E £80
615	○ The small selection of imperf. Pence type, comprising 1852-57 3d., 6d., 1855 10d., 1857 7½d. and 1857 ½d., all used, margins at places, some small faults (5)	E £25 to £30
616	○ 1859 5c. (4), 10c. (apparently unused), 12½c. (3), 17c. (3), 1864 2c. (2, one part o.g., other regummed and cleaned), fair to fine, shades (13)	E £24
617	○ — 10c. black-brown, S.G. 33, a used copy, centred to lower-left, perf. missing at bottom, otherwise fine (see photo-plate II) (1)	£90
618	○ — 10c. deep red-purple, S.G. 33b, a used copy, centred to top-right, fine (see photo-plate II) (1)	£60
619	○ — The Collection, comprising 1c. (5), 5c. (6), 10c. (7), 12½c. (4), 17c. (5), also 1864 2c. (3), nearly all used, shades, majority fair to fine (30)	E £25 to £30

Lot No.	CANADA (continued)	Cat. or Est. Value
620	1859 to 1897, the Collection, in blue "Warwick" loose-leaf album, including 1859 to 17c. (4), a range of large and small "Cents" types, etc., some unused, poor to fine (105)	E £50 to £60
621	The small Collection of large "Cents" type, including thin paper 1c., 2c., unused, 1868-88 3c., wmkd., and other values to 15c., 1873-78 5c., 1869 1c. (2), etc., some unused or part o.g., many fine (44)	E £40
622	1868 to 1897, the useful Collection, including a very good range of large "Cents" types with a defective copy of the 1868-88 1c. on wmkd. paper, values to 15c. (19), with a repaired copy of the clear deep violet, various shades, papers and pmks., small "Cents" types with shades, some unused, 1893 20c. (3), 50c. (4, two part o.g.), a range of Registration stamps with 8c. (3), shades, Special Delivery 10c. (3), etc., unused and used, many fine, an interesting lot (178)	E £60 to £70
623 ☆	1888-97 3c. bright vermilion, imperf. horizontal pair, S.G. 106a, unused, large margins, fine (2)	£17
624 ☆	— 6d. deep chestnut, S.G. 108, two horizontal strips of three, slightly different shades, one of each slightly thinned, few perfs. short or split, otherwise fine, o.g. (6)	£18

1897, Jubilee

625 ☆	SET WITHOUT SHADES, S.G. 121-140, all o.g. or part o.g., all very fresh but \$4 and some low values badly thinned, some others have lesser faults, nevertheless an attractive set (for \$3 and \$5 see photo-plate II) (16)	£300
626 ☆	½c., 1c. (2), 2c. (2), 3c., 5c. (2), 6c. to 20c., 50c., \$1, all part o.g., mostly fine, \$1 has slight gum crease (15)	£57 5s.
627 ☆	½c., 1c. (2), 2c. (2), 3c., 5c. (2), 6c., 8c., 10c., 15c., 20c., 50c., \$1, the 10c. unused, others o.g. or part o.g., 6c. and 8c. have tiny gum thinnings, others fine (15)	£57
628 ☆	½c., 1c. (3), 2c. (2), 3c. (2), 5c. (2), 6c., 8c., 10c., 15c., 20c. (2), 50c. (3), \$1, all part o.g. and mostly fine including the top value (20)	£70 5s.
629 ☆	\$2 deep violet, S.G. 137, o.g., traces of tiny gum thinnings, fine but perf. at right a little short (see photo-plate II) (1)	£55
630 ☆	Another copy, large part o.g., centred slightly to top-right, very fine (see photo-plate II) (1)	£55
631 ☆	Another copy, part o.g. (hinge remainders), fine but for a few blunt perfs. and trace of gum thinning (see photo-plate II) (1)	£55
632 ☆	\$3 bistre, S.G. 138, large part o.g., centred slightly to top-left, very fine (see photo-plate II) (1)	£65
633 ☆	Another copy, large part o.g., centred slightly to left, very fresh and fine (see photo-plate II) (1)	£65
634 ☆	Another, o.g., centred slightly to top-left, a little creased, fine (see photo-plate II) (1)	£65
635 ☆	\$4 violet, S.G. 139, large part o.g., centred slightly to top, very fine (see photo-plate II) (1)	£85
636 ☆	Another copy, large part o.g. (hinge remainder), centred to lower-right, fine but for a few slightly blunt perfs. (see photo-plate II) (1)	£85

CANADA (continued)

Lot No.	1897, Jubilee (continued)	Cat. or Est. Value
637 ☆	\$5 olive-green, S.G. 140, large part o.g., centred slightly to top, perf. missing at bottom, otherwise very fine (see photo-plate II) (1)	£65
638 ☆	Another copy, part o.g. (hinge remainders), well centred and fine but for very faint corner crease (see photo-plate II) (1)	£65
639 ☆	Another part o.g. copy, centred slightly to top-right, a trifle creased, otherwise fine (see photo-plate II) (1)	£65
640	The Collection, issues from 1897 to 1912, including 1897-98 to 10c. (2), 1898-1902 to 20c. (2), 1903-12 to 50c., 1908, Quebec (two sets), etc., o.g. and used, mainly fine (99)	E £45
—		
641 ☆	1898-1902 1c. deep green, an imperf. horizontal pair, S.G. 152a, part o.g., large margins, fine (2)	£17
642 ☆	— 5c. slate-blue, an imperf. horizontal pair, S.G. 157a, part o.g., large margins, fine (2)	£17
643 ☆	— 10c. deep brownish-purple, an imperf. horizontal pair, S.G. 164a, part o.g., large margins, fine (2)	£17
644	The Collection of Queen issues from 1870, including unused and used small "Cents" types with values to 10c., 1893 20c., 50c., 1893 8c. (4), 1897-98 to 10c., 1898-1902 to 20c., etc., many o.g. or part o.g., mainly fine (141)	E £58
645 ☆	1903-12 50c. deep violet, S.G. 187, part o.g., centred slightly to left, fine but for a few blunt perfs. (1)	£22
646 ☆	— Another copy, part o.g., trace of tiny gum thinnings, centred to top, fine (1)	£22
647 ☆	— 1c. (6), 2c. (6), 5c. (3), 7c. (4), 10c. (4), 20c. (3), 50c., a few, including 50c., regummed, others o.g. or part o.g., shades (35)	E £20
648	The Collection, issues from 1912 to about 1951, including 1912-18 to 50c. (2), War Stamps, 1922-31, 1928-29, 1930-31, 1935 to \$1, George VI, with sets to £1, Registration with 8c. (4, one pen-marked), Official, 1950-52 to \$1, Special Delivery, Postage Due, Officially Sealed, 1907 black (block of four), etc., many o.g. or part o.g., mainly fine, a few a little stuck-down (386)	E £80 to £100
649 ☆	1928, Air 5c., a horizontal pair from bottom of sheet, variety imperf. vertically, S.G. 274c, mint, a little creased, fine (see photo-plate II) (2)	£30
650 ☆	1928-29 and 1930-31 sets with the various perfs. but no additional Dies, all o.g. or part o.g. and mostly fine (35)	£27 2s.
651 ☆	— ditto, sets with the various perfs. and Dies, all o.g. or part o.g. and mostly fine (38)	£27 17s.
652 △	1935 10c., variety imperf., a fine mint horizontal pair from right of sheet (2)	E £10 to £15
653	The Collection of George V issues, including 1912-18 to 50c., 1915 (February) 5c., 20c., 50c., 1916 (September) 2c., Die I, 1922-31 to \$1, 1928-29 to \$1 (2), 1930-31 to \$1, etc., majority o.g. or part o.g., mainly fine (128)	E £34

Is your Collection insured? If not, write for explanatory Leaflet/Proposal Form.

Lot No.	CANADA (continued)	Cat. or Est. Value
654	The useful Collection of Queen, Edward VII and George V issues, 1897-98 and 1898-1902 sets with shades, 1903-12 set with duplicates, 1908, Quebec set, part o.g., 1912-18 to 50c. (2), 1915, War Tax overprinted set, a range of other sets, Commemoratives, Dues, etc., majority o.g. or part o.g. and mostly fine . (241)	E £35 to £40
655 ☆	The Collection of George VI and E.II issues, including many sets, values to \$1, coils, booklet panes, Dues, etc., all o.g. or part o.g. except four, mostly very fine . (368)	E £7 to £10
656 ○	Cancellations: A Collection in blue "Grafton" loose-leaf album, including Leaf type (32); Ring-numeral type; "2" in Sunburst on strip of six small "Cent" 1c.; Letter types (20); Coloured (with some modern); a good range of the Fancy cancellations; Squared-circles; Circles types; a few covers or cards; chiefly Queen issues but some modern included; also a Collection of pre-cancels (about 1080), mostly Edwards, George V and George VI but with a few earlier issues, condition mixed but many fine . (1900+)	E £200 to £250
657	The Collection in small green stock-book, including 1859 1c. (3), 5c. (6), 12½c. (3), 17c., large "Cents" types with values to 15c. (7), small "Cents" types with many shades and prints (some part o.g.), 1893 20c. and 50c. (two part o.g. copies of each), 1897-98 to 10c., 1898-1902 to 20c., 1903-12 set, part o.g. (50c. thinned), 1908, Quebec set, 1912-18 to 50c. (2), 1915, War Tax overprinted set, 1928-29 set, used, later issues, sets, Commemoratives, duplicates, etc., mixed condition but an interesting lot . (hundreds)	E £60 to £70
658	A Collection, in black loose-leaf album, including a few large and small "Cents" types, 1897, Jubilee \$2 (thinned), other Queen issues, 1908, Quebec set, 1922-31 \$1, 1928-29 \$1 and a large range of George VI and E.II issues, with blocks, etc., many o.g. or part o.g., also a few Newfoundland . (1194)	E £60 to £70
659	The Collection in green "Favourite" loose-leaf album, including a few Queen and Edward issues, George V with used values to \$1, George VI and E.II with o.g. \$1 values, etc., also a small selection of Newfoundland with 1897 60c. (off-centre to top-right), 1911, Coronation to 15c., etc., o.g. and used, poor to fine . (500+)	E £22
660 △	Special Delivery: 1938 20c., variety imperf., an o.g. horizontal pair, one has small corner crease, otherwise fine . (2)	E £10 to £15
661 ☆	Official: The Collection of George VI issues complete, also a few E.II issues and the two Special Delivery stamps, all o.g. or part o.g. and mostly very fine . (49)	£58 3s.
662 ○	— The used Collection of George VI issues, complete except for 1952-53 7c. and \$1, S.G. 01-029, 031, 0S1, 0S2, mostly fine . (34)	£54 4s.

CAYMAN ISLANDS

663 ○	1907 set, S.G. 13-16, all used, 5/- a trifle soiled, otherwise fine . (4)	£71
664 ☆	— 5/-, S.G. 16, part o.g., centred to top-left, fine (see photo-plate VI) (1)	£45
665 △	1907 (September) ½d. on 1d., S.G. 17, a horizontal pair from lower-left corner of sheet with Control, lightly cancelled and on small piece, a little rubbed at lower-left . (2)	£20
666 ○	1907 (November) ½d. on 5/- and 1d. on 5/-, S.G. 18, 19, both with light cancellations, first a little soiled, fine, last with horizontal crease and two short perfs. . (2)	£92
667 ☆	1908 2½d. on 4d., S.G. 24, part o.g., a trifle soiled and perf. a little short at top, otherwise fine (see photo-plate VI) . (1)	£200

Lot No.	CAYMAN ISLANDS (continued)	Cat. or Est. Value
668 ☆ 田	1907-09 4d., S.G. 29, a mint block of four from lower-left corner of sheet, with Control, centred slightly to right, fine (4)	£52
669 ☆	1908 10/-, S.G. 36, part o.g., centred slightly to top-right, few perfs. short, otherwise fine (see photo-plate VI) (1)	£38
670 ○	— Another copy, light cancellation, a little soiled (see photo-plate VI) (1)	£42
671 ☆	1912-20 10/-, three papers, S.G. 52-52b, part o.g., fine (3)	£38
672	The Collection, issues to 1926, including 1901-02, 1905-06 sets, 1907 4d., 6d., 1/-, 1907-09 4d., George V to 10/-, some o.g. or part o.g., majority fine (61)	E £32
673 ☆	1932, Centenary set to 5/-, S.G. 84-94, all o.g. or part o.g., few short perfs. (11)	£30 9s.
674 ☆	1935 set, S.G. 100-111, all o.g. or part o.g., few perfs. short or missing, 1/2d. slightly soiled (12)	£17
675 ○	— Used set, 10/- has tiny mark on surface (12)	£19
676 △	— 10/-, S.G. 111, lightly cancelled and on piece (1)	£10

677	DOMINICA: The Collection of Queen issues, including 1874 set, 1877-79 to 1/- (2), 1882 and 1883 surcharges, 1883-84 2½d., part o.g., other issues and Postal Fiscals, etc., unused and used, mostly fair to fine (31)	E £25 to £30
678 ☆	— 1903 set, S.G. 27-36, all part o.g., 1d., 1/-, 2/- have gum creases, 1/- has tiny thinning (10)	£42
679 ☆	— 1907-08 set, S.G. 37-46, all o.g. or part o.g., 1d., 2½d. a little rubbed, 5/- has few perfs. short (10)	£40
680 ☆	— 1908-21 1/2d., 1d. (2), 2d. (2), 2½d. (2), 3d. (2), 6d. (2), 1/-, 2/-, 5/-, all o.g. or part o.g., a few a little gum creased, mostly fine (14)	£17 2s.
681 ☆	— 1923-27 set except shades, S.G. 71-91, all o.g. or part o.g., £1 with a few faults, otherwise fine (for £1 see photo-plate VI) (17)	£54 5s.
682 ☆	— ditto £1, S.G. 91, o.g., perfs. at bottom a trifle short, otherwise fine (see photo-plate VI) (1)	£45
683	— The Collection, issues to 1927, including Queen issues, values to 1/-, 1907-08 6d., 5/-, George V to 5/-, etc., some o.g. or part o.g., fair to fine (61)	E £18

FALKLAND ISLANDS

684 △	1861-77, the two "franks", on white, fine (2)	£20
685 P	1878-79 1d., imperf. Plate Proof in brown on wove paper, large margins, fine (see photo-plate III) (1)	E £25 to £30
686 P	— 6d., imperf. Plate Proof in blue on wove paper, large margins, fine (see photo-plate III) (1)	E £25 to £30
687 P	— 1/-, imperf. Plate Proof in brown on wove paper, large margins, slightly creased in right margin, otherwise fine (see photo-plate III) (1)	E £20 to £25
688 P	— A similar proof but in green, similar condition (see photo-plate III) (1)	E £20 to £25
689 ☆	— 1d. (horizontal pair), 4d. (slightly stained), 6d. and 1/- (block of four, single), S.G. 1-4, all part o.g., 6d. and single 1/- a little thinned, the 1d. pair from bottom of sheet with imperf. margin (9)	£89 5s.

Lot No.	FALKLAND ISLANDS (continued)	Cat. or Est. Value
690 ○	1878-79 1d. claret, S.G. 1, a scarce used horizontal pair, centred slightly to left, fine. With B.P.A. certificate (1967) (see photo-plate III) (2)	£32+
691 ○	— Set, S.G. 1-4, all used, fair to fine (4)	£43 10s.
692 ☆田	— 6d. blue-green, S.G. 3, a part o.g. block of four (two creased), showing fresh entries on two stamps (Nos. 27, 37) (4)	E £12
693 ☆	1883-1902 1d. dull claret, S.G. 9, part o.g., centred slightly to right, fine (see photo-plate III) (1)	£30
694 ☆	— Another part o.g. copy, centred slightly to right, a little stained at left. With "Royal" certificate (1967) (see photo-plate III) (1)	£30
695 ☆	— The same in a part o.g. horizontal pair with wmk. inverted and reversed, fine (see photo-plate III) (2)	£60
696 ☆	— 2½d. Prussian blue, S.G. 23, part o.g., centred to left, fine (1)	£18
697 ☆田	— 2½d. ultramarine (bright shade), S.G. 24, an o.g. sheet of sixty (three thinned), a little rust marked (60)	£33
698	— The useful Collection, comprising ½d. (19), 1d. (41), 2d. (2), 2½d. (6), 4d. (67), 6d. (6), 9d. (2), 1/- (2), numerous shades, blocks or strips of the 1d. and 4d. values, a few varieties, all o.g. or part o.g. except twelve (153)	E £60 to £70
699 ☆	1885-91 1d. (3, part o.g., one used), 4d. (part o.g., five used), mostly fine (10)	£30
700 ☆	1891 ½d. on half 1d. claret, S.G. 38, a part o.g. strip of three, a little gum creased, fine. With "Royal" certificate (1930) (see photo-plate III) (3)	E £70
701 △	— ½d. on half 1d. claret, variety surcharge inverted, S.G. 38d, used on small piece with bars type cancellation, plain edge at right, fine (see photo-plate III) (1)	£90
	<i>Sold "as-is"</i>	
702 ☆	1898 2/6 and 5/-, S.G. 41, 42, o.g., good centring and fine (2)	£24
703 ☆	— The same two stamps, part o.g., slightly off-centre and a little gum wrinkled (2)	£24
704 ☆	— 2/6 and 5/-, part o.g. and fine but for a few blunt perfs. (2)	£24
705 ○	— The same two stamps, lightly cancelled, a little off-centre (2)	£27
706 ☆	1904-12 2d. reddish-purple, S.G. 51, part o.g., centred slightly to top-right, fine (see photo-plate III) (1)	£40
707 ☆	— The same in a mint horizontal pair, centred slightly to bottom, fine (see photo-plate III) (2)	£80
708 ☆	— 2½d. pale ultramarine, S.G. 52a, part o.g., fine. With "Royal" certificate (1967) (see photo-plate III) (1)	£23
709 ☆	— 2½d. deep blue, S.G. 53, o.g., centred slightly to right, fine (see photo-plate III) (1)	£25
710 ☆	— Another copy, large part o.g., centred slightly to left, fine but for a few blunt perfs. (1)	£25
711 ☆	— 3/-, 5/-, S.G. 56-58, part o.g., fine (two shades) (3)	£19
712 ☆	— The Collection, comprising ½d. (9), 1d. (12), 2d. (6), 2½d. (7), 6d. (4), 1/- (4), 3/- (3), 5/- (2), and 1906 1d. (3), all o.g. or part o.g., shades, etc., mainly fine (47)	E £25 to £30
713 ☆	1912-20 3/-, 5/- (both colours), 10/- and £1, S.G. 81-85, all large part o.g., 10/- from top and £1 from corner of sheet, fine but for a few gum creases and blunt perfs., mixed centring (5)	£71
714 ☆	— 3/- to £1, S.G. 81-85, all o.g. or part o.g., £1 slightly gum creased and has two damaged perfs. at top-right (5)	£71

Lot No.	FALKLAND ISLANDS (continued)	Cat. or Est. Value
715 ☆	1912 to 1929, the Collection, including 1912-20 to 10/-, 1918-20, War Stamps, 1921-29 to 3/-, shades, etc., all o.g. or part o.g. (65)	E £24
716 ☆田	1918-20, War Stamp ½d. pale green, a block of four, variety albino overprint, S.G. 87a, large part o.g. and very fine. With B.P.A. certificate (1959) (see photo-plate III) (4)	£260
717 ☆	— ditto 1d. pale scarlet, variety overprint double, S.G. 91a, large part o.g., from right of sheet, very fine. With B.P.A. certificate (1967) (see photo-plate III) (1)	£70
718 ☆	— ditto 1d. pale scarlet, variety overprint double, one albino, S.G. 91b, large part o.g., a few perfs. missing or short, fine. With B.P.A. certificate (1955) (see photo-plate III) (1)	£38
719 ☆田	— ditto 1/- deep brown on thick greyish paper, variety wmk. inverted, a fine o.g. block of four from lower-left corner of sheet. Scarce (4)	E £20 to £25
720 ☆田	1921-29 2½d. Prussian blue, S.G. 110, an o.g. block of four from left of sheet, fine. With "Royal" certificate (1967) (see photo-plate III) (4)	£100
721 ☆	1928, South Georgia Provisional 2½d. on 2d. purple, S.G. 115, o.g. and fine but for small ink mark on reverse (see photo-plate III) (1)	£130
722 ☆	1929-36 ½d., 1d. (2) 2d., 2½d., 4d. (2), 6d. (2) 1/- (3), 2/6 to £1, S.G. 116-126, all o.g. or part o.g., fine (16)	£48 18s.
723 ○	— ½d. to 10/-, all lightly cancelled, fine (10)	£18 10s.
724 ☆	— Set with some shades and duplicates, S.G. 116-126, all o.g. or part o.g.. £1 and a few others are off-centre, mostly fine but for some blunt perfs. (16)	£48 11s.
725 ○	— 2/6 to £1, S.G. 123-126, all lightly pmkd. and fine but for a few blunt perfs. (4)	£56 12s.
726	The Collection, issues to 1929, including 1878-79 1d., 4d., 6d., 1/-, 1885-91 1d. (pair and bisected single on small piece), Edwards to 5/-, 1912-20 to 10/-, 1921-29 to 3/-, some o.g. or part o.g., fair to fine (56)	E £38
727 ☆	1933, Centenary set, S.G. 127-138, all o.g. and very fine (for £1 see photo-plate III) (12)	£275
728 ☆	— ditto, another set, all part o.g. and fine but for the usual faint gum creases and a few blunt perfs. (for £1 see photo-plate III) (12)	£275
729 ☆	— ditto 5/- black and yellow-orange, S.G. 136a, o.g., centred slightly to bottom, very fine (see photo-plate III) (1)	£150
730 ☆田	1935, Silver Jubilee 1/-, an o.g. block of four from lower-left corner of sheet, top-left stamp the extra flagstaff variety, S.G. 142a, very fine (see photo-plate III) (4)	£225
731 ○	— ditto 1/-, the extra flagstaff variety, lightly cancelled and fine (see photo-plate III) (1)	£225 unused
732	The Collection of Queen, Edward VII and George V issues, including 1878-79 1/-, 1883-1902 to 1/- (3), with many shades (some scarce), 1898 2/6, 1904-12 3/- (2), 5/-, and lower values with some shades, 1912-20 to 5/- red, with many shades and duplicates, War Stamps, 1921-29 to 3/-, etc., unused and used, mostly fair to fine (141)	E £40 to £50

"How to buy at Auction." This explanatory leaflet, free on request, will help new Postal buyers.

Lot No.	FALKLAND ISLANDS (continued)	Cat. or Est. Value
733 ☆	1938-49 5/- indigo and yellow-brown, S.G. 161a, mint and fine (see photo-plate III) (1)	£38
734 ☆	— Another copy, o.g. and very fine (see photo-plate III) (1)	£38
735 ○	— The same stamp lightly cancelled, fine but for a few blunt perfs. (1)	£17
736 ○	— Another lightly pmkd. copy in similar condition (1)	£17
737	The Collection of George VI and E.II issues, including 1938-49 to £1 (2), with many shades and duplicates, 1952 set, 1960 set, Dependencies with 1954 set, other sets and Commemoratives, etc., nearly all o.g. or part o.g. and mostly fine (206)	E £12
738	The Collection, issues from 1935, containing Silver Jubilee £1, block of four, one the short extra flagstaff variety, 1938-49 to £1 (3), Silver Wedding £1, 1952 to £1, 1960 to £1, Dependencies with sets and values to £1, o.g. and used (156)	E £17
739 △	George V ½d. War Stamp, tied to small piece by violet oval "DECEPTION ISLAND 28 DEC 1921 SOUTH SHETLANDS" cancellation, fine (1)	E £7 to £10
740 △	George V 1d., on small piece and with black oval "DECEPTION ISLAND 4 FEB 1915 SOUTH SHETLANDS" cancellation (1)	E £7 to £10
741 ∞	George V ½d., block of four, tied to entire addressed to Liverpool by black oval "H.M.C.S. "AFTERGLOW" 13 MAR 1925 POSTED ON BOARD" cancellation, fine (1 entire)	E £20

END OF THIRD DAY'S SALE

VIEWING BY POST

Lots of convenient size will be sent for postal viewing to Clients out of the London area on payment of postage, insurance, envelopes, etc., plus a small handling charge. References are requested from Collectors unknown to us.

EARLY APPLICATION IS ESSENTIAL

Lots sent for postal viewing are insured against all Civil Risks whilst in transit to and from the viewing client, but are the client's responsibility whilst in his possession.

FOURTH DAY OF SALE

THURSDAY, MARCH 20th, 1969

AT ONE-THIRTY P.M. PRECISELY

The quotations in the right-hand column of this Catalogue are from Stanley Gibbons' 1969 Catalogue and Supplements, unless preceded by the letter "E", when they indicate our estimate of the approximate market value.

BRITISH AMERICA

GRENADA

Lot No.	1861-62	Cat. or Est. Value
742 P	1d. rose-red, imperf. Plate Proof on wove paper, a fine horizontal pair . (2)	E £6
743 P	Another pair, a pair of the 6d. in rose-red, margins all round but small tear at left and soiled at places, and 1875, Plate Proof in black of the uncharged design, fine (5)	E £10
✓ 744 O	1d. bluish-green, S.G. 1, circular "MAR 24 1862 E" cancellation, fine (see photo-plate IV) (1)	£30
745 O	1d. and 6d., two shades of each, all cancelled "A15", one 6d. has faint corner crease, others fine (4)	E £12 to £15
746 ☆	1d. green, 1863-71 1d. (two shades), 1873-74 1d., 1881 (April) 1d., unused or part o.g., fair to fine (5)	£42 15s.
✓ 747 P	6d., Die Proof in black, mounted on card, a trifle stained, fine and scarce (see photo-plate IV) (1)	E £60
748 P	6d., imperf. Plate Proof in vermilion on laid paper, a horizontal strip of three, touched at lower-left, otherwise margins all round, slight crease, otherwise fine (3)	E £15 to £20
749 ☆	6d. rose, S.G. 3, unused, centred to top-left, fine but for tiny thinning. With "Royal" certificate (1949) (see photo-plate IV) (1)	£70
750 ☆	Another unused copy (re-gummed), centred slightly to left, fine. With B.P.A. certificate (1956) (see photo-plate IV) (1)	£70
751 O	6d., 1863-71 6d. rose, 1873-74 6d., and 1878 6d., all used, first slightly stained on perfs., others fine (4)	£26 5s.
752 ☆	Perf. 11-12 6d. lake-red, S.G. 3a, part o.g., very fine but for vertical crease. Scarce (see photo-plate IV) (1)	£90
✓ 753 ☆田	— The same in a scarce block of four, part o.g., centred slightly to right, with usual creasing and a little gum thinned, otherwise extremely fine (see photo-plate IV) (4)	£360

PLATE IV



GRENADA (continued)

Lot No.	1863-71	Cat. Value
754 ☆	6d. rose, S.G. 6, part o.g., centred slightly to top, good colour, fine (see photo-plate IV) (1)	£35
755 ☆	Another part o.g. copy, centred to top-left, a trifle stained, otherwise fine (see photo-plate IV) (1)	£35
756 ☆	6d. rose, an unused horizontal pair, centred slightly to lower-right, lower-left corner weak and a little stained (see photo-plate IV) (2)	£70
757 ○	The same stamp in a horizontal strip of three, left-hand stamp a little creased and a horizontal pair, lightly cancelled, fine (5)	£15
758 ☆	6d. orange-red, S.G. 7, part o.g., centred slightly to bottom, small stain on perfs. at top, fine (see photo-plate IV) (1)	£55
759 ☆	Another copy, part o.g., centred slightly to lower-left, fine but for small thinning (see photo-plate IV) (1)	£55
760 ○	6d. dull rose-red, wmk. sideways, S.G. 8, a lightly cancelled horizontal pair, centred a little to bottom, fine. Scarce (see photo-plate IV) (2)	£50

GRENADA (continued)

Lot No.	1863-71 (continued)	Cat or Est. Value
761 ○	6d. dull rose-red, wmk. sideways, S.G. 8, a lightly cancelled horizontal pair, centred to top-right, fine but for faint horizontal crease. With "Royal" certificate (1956) (see photo-plate IV) (2)	£50
762 ☆	6d. vermilion, S.G. 9, unused, centred slightly to left, fine but for corner crease. With "Royal" certificate (1949) (see photo-plate IV) (1)	£35
763 ☆	Another copy, part o.g., wmk. sideways, centred slightly to left, a trifle stained, otherwise fine (see photo-plate IV) (1)	£35
764 ○	6d., eighteen used copies in rose, orange-red and vermilion shades, "A15" and circular cancellations, majority fine (18)	E £20 to £25
765 ○	6d., four horizontal pairs, in orange-red or vermilion shades, all with dated pmks., fine (8)	E £12 to £15
766 ○	6d., three lightly cancelled horizontal pairs of different shades, fine (6)	E £10
767 ○	6d., four horizontal pairs, all with "A15" pmks., shades, one slightly creased, another a little thinned (8)	E £10
—		
768 ○	1873-74 1d. (part o.g., small thinning and used), 6d. (five used), and 1878 1d. (used), mostly fine (8)	E £10
769 ☆	— 6d. orange-vermilion, S.G. 12, part o.g., good centring, lower-left corner perf. missing, otherwise fine (1)	£35
770 ○	— 6d. orange-vermilion, three used horizontal pairs, mostly fine (6)	E £10
771 ☒	— 6d. orange-vermilion, a slightly oxidised horizontal pair used on large blue envelope to Trinidad (not tied); the cover, which is somewhat soiled and creased, bears "GRENADA JU 19 75" backstamp (2)	E £10 to £15
772 ☆	1881 (April), wmk. large Star, ½d. pale mauve, ½d. deep mauve (pair), 2½d., 4d., S.G. 20-23, all part o.g., first has small thinning, last small stain (5)	£17
773	The small remainder of first type 1d. (13) and 6d. (9) values, all used except one 6d. (apparently unused), shades, different wmk. and perms., mainly fine (22)	E £25 to £30
774	The useful Collection of Queen issues, including a very good range of first type 1d. and 6d., with many shades and better items, 1881, surcharges on Revenue stamps with 2½d. claret, 1883 (January) 1d. (S.G. 27), 1883 set, 1886 surcharges, some 1888-91 surcharges with S.G. 44, 1895-99 set, etc., unused and used, majority fair to fine (73)	E £60 to £70
775 ☆	1902 set, S.G. 57-66, all part o.g., some, including 10/-, a little rubbed or a trifle soiled (10)	£38
776 ☆	— 2/-, 5/-, 10/-, S.G. 64-66, o.g., fine (3)	£39
777 ☆	1904-06 set, S.G. 67-76, all part o.g., mostly fine, 10/- has few perms. a trifle short (10)	£60
778 ○	1913-21 10/-, the two papers, one with corner perf. missing, lightly cancelled, fine (2)	£18
779	The Collection, issues to 1931, containing a range of Queen issues, with 1883 (January), "POSTAGE" diagonally on half 1d., a used unsevered pair (small pinhole), 1883 1/-, 1895-99 to 1/-, 1908-11 2/-, George V with values to 3/-, some o.g. or part o.g., fair to fine (107)	E £35
780	Various, issues from about 1904, including 1908-11 5/-, 1913-21 to 10/- (2), 1921-31 5/- (11), 10/- (2), etc., issues to 1936, majority o.g. or part o.g., many fine (142)	E £30

JAMAICA

Lot No.	Including the Collection offered by order of Lt.-Col. S. Attenborough of Canterbury, Kent	Cat. or Est. Value
781 ☒	Various pre-stamp items, comprising 1873 and 1874, double letter-sheets showing straight-line "JAMAICA" marks (one smudged), 1846, Falmouth datestamp on letter-sheet, two Kingston datestamps on letter-sheets and one on piece, fair to fine (6 items)	E £7 to £10
782 S	1860-63 1d., 2d., 4d. and 6d., all imperf. and overprinted "SPECIMEN", fair to fine but without gum (4)	E £12 to £15
783 ☆	— 1d. (4), 2d., 3d. (2), 4d., 6d. and 1/-, all part o.g. or unused, shades, some have small faults but majority fair to fine (10)	E £20 to £30
784 P	— 2d., Die Proof in black on glazed card, a little toned round the edges (1)	E £10
785 P	— 1/-, cut-down Die Proof in black on glazed card, slightly rubbed (1)	E £7 to £10
786 P	— 1/- yellow-brown, imperf. and showing the "\$" variety, unused and fine but for three tiny surface scratches. Extremely rare (see photo-plate VI) (1)	E £40 to £50
787 ○	— 1/- purple-brown, the "\$" variety, S.G. 6c, lightly pmkd. but thinned, rubbed and some perfs. short (1)	£48+
788 ○	— The used Collection, comprising 1d. (10), 2d. (4), 3d. (8), 4d. (5), 6d. (10), 1/- (16), and 1d. bisect on small piece (doubtful), a good range of shades and pmks., mixed condition (54)	E £30 to £35
789	1870-83, the Collection, including a good range of part o.g. or unused with values to 5/- (2), used to 5/- (2), with a defective copy of the 1/- "\$" variety, various pmks., etc., majority fair to fine (71)	E £25 to £30
790 ☆	1883-97 2d. grey (two shades in blocks of four), 3d. (block of six), 4d. (marginal block of twelve), 6d. (two shades in blocks of four), 1/- (block of four) and 5/- (block of four), all mint or part o.g. and mostly fine (42)	E £17 to £20
791	— The useful Collection of this issue, including values to 5/- (2), many shades, pmks., etc., unused and used, majority fair to fine (123)	E £20 to £25
792	The Collection of Queen issues, including 1860-63 to 1/- (3), 1870-83 3d. unused (2), 5/-, 1883-97 to 5/-, etc., unused and used, mostly fair to fine (68)	E £25 to £30
793	1889 to 1911, the Collection, including 1890 2½d. on 4d., surcharges with the double surcharge and "PFNNY" varieties, 1903-04 to 5d. (4), the "SER.ET" error on the ½d., 1d. (2), 2½d. (2), all in pairs or blocks with normals, 1905-11, Arms to 5/- (3), with ½d. "SER.ET" error (2), etc., unused and used, mostly fair to fine (154)	E £20 to £25
794	1905-11, Queen Victoria types, the Collection, including a good range of shades and better colours, blocks of four, 2/- Venetian red (used pair) Specimens, etc., also 1911 2d. grey (8), unused and used, mostly fair to fine (77)	E £15 to £20
795	1912 to 1920, the Collection, including 1912-20 to 5/-, with shades, blocks, Specimens, a very good range of "WAR STAMP" overprints with many varieties, including some scarce, etc., o.g. and used, majority fine (260)	E £20 to £25
796	1912 to 1929, various, including 1912-20 5/- (pair, single), 1921-29 to 10/-, twenty-nine are used, others o.g. or part o.g. (59)	E £13
797 P	1919-21 1½d. (2), 2d. (3), 2½d. (pair and single), 3d., 4d. and 2/- (pair), imperf. Plate Proofs in various colours, all overprinted "SPECIMEN", mostly fine (for 4d. see photo-plate VI) (12)	E £30 to £40

Lot No.	JAMAICA (continued)	Cat. or Est. Value
798	1919-21, the Collection of this issue, including a range of shades and duplicates, values to 10/- (3), "SPECIMEN" overprints, etc., o.g. and used, mostly fine (70)	E £12 to £15
799 P	— The unissued Abolition of Slavery 6d. carmine and slate-blue on Mult. CA paper, overprinted "SPECIMEN" vertically, large part o.g. and fine but for faint crease (see photo-plate VI) (1)	E £12 to £15
800	1921-23, the Collection, including shades, duplicates, blocks, values to 10/- (2), also 1921 6d. (7, and pair overprinted "SPECIMEN"), o.g. and used, mostly fine (97)	E £10
801	The Collection, issues to 1929, including a range of Queen issues with values to 5/-, 1919-20 to 5/-, 1919-21, 1921-29 to 10/-, 1923, Child Welfare set, etc., some o.g. or part o.g., fair to fine (124)	E £25 to £30
802 ☆	1935, Silver Jubilee 1½d., 6d. and 1/-, all with the "extra flagstaff" variety, S.G. 115a, 116a, 117a, also a corner block of four of the 6d., with one copy showing the same variety, all part o.g. and fine (7)	£44 11s.
803	The Collection of issues from 1923 in green spring-back album, including 1923, Child Welfare ½d. (3), 1d. (2), 2½d. (3), 1929-32 to 9d. (seven o.g., five used), Silver Jubilee set in blocks of four and singles, 1938-52 to £1, 1945-46 to 10/- (3), some E.II issues, etc., o.g. and used, mostly fine (281)	E £12
804 ○	The balance of the Collection, including Great Britain stamps used in Jamaica, a very good range of postmarks with Montego Bay pre-stamp mark on small piece, numeral cancellations, single ring, squared circle and double circle datestamps, a few later covers, including Airmail special flights, Postal Fiscals, Officials with varieties, etc., majority used, mostly fair to fine (198)	E £15 to £20
—		
805 ☆	LEEWARD ISLANDS: 1897, Jubilee set with additional 1d. (with "kiss-print" overprint), some, including 5/-, with staining, all part o.g., the 5/- has B.P.A. certificate (1961), stating "a very close double impression . . . genuine" (kiss-print) (9)	£110
806 ☆	— The Collection of Queen and Edward VII issues, including 1890 set, 1897, Jubilee set to 1/-, Edwards complete, etc., all part o.g. or unused and mostly fine (46)	£61 14s.
807 ☆	— 1921-32 10/- and £1, S.G. 79, 80, large part o.g., well centred and fine (for £1 see photo-plate VI) (2)	£33
808 ☆	— ditto 10/-, £1, o.g., fine (2)	£33
809	— Various issues to 1932, including 1890 5/-, Edwards to 5/- and George V with values to 10/-, majority o.g. or part o.g., mainly fine (155)	E £32
810 ☆	— 1938-51 £1 purple-brown and black on red, S.G. 114, large part o.g., centred slightly to left, fine but for faintest trace of gum crease (see photo-plate VI) (1)	£25
811 ☆	— The Collection of George V, George VI and E.II issues, including 1912-22 to 5/- (3), 1921-32 to 5/-, 1938-51 to £1 (4), with the 1/- black and grey on emerald, 1954 to \$4.80, etc., all part o.g. or unused and mostly fine (158)	E £16

Don't sacrifice your stamps. Cash Advances (£100 to £50,000 or more) are available at moderate rates pending sale. Ask for details.

Lot No.

MONTERRAT

Cat. or Est. Value

812	The small selection of Queen issues, including 1876 1d. (3), 6d., 1880 2½d., part o.g., 4d. (2), 1884-85 2½d. red-brown, 1884 (May) 1d., etc., unused and used, mostly fair to fine (14)	£51 5s.
813 ☆	1903 2/-, 2/6 and 5/-, S.G. 21-23, all part o.g., 5/- has small stain on reverse (3)	£35
814 ☆	— 5/-, S.G. 23, part o.g., fine (1)	£30
815 ☆	— Another part o.g. copy, fine but for faint crease (1)	£30
816 ☆	1903-08 5/-, S.G. 33, part o.g., centred slightly to right and a little rubbed, otherwise fine (1)	£23
817 ☆	— 5/-, 1908-13 5/- and 1914 5/-, S.G. 33, 47, 48, o.g. or part o.g., first two have small stains (3)	£55
818 ☆	1914 5/-, S.G. 48, part o.g. and fine (1)	£22
819 ☆	1932, Tercentenary set, S.G. 84-93, all o.g., fine (10)	£45
820	The Collection, issues to 1929, including 1876 1d., 6d., 1880 2½d., 4d., 1884-85 2½d. red-brown, 1908-13 5/-, 1916-23, 1922-29 to 5/-, also Leeward Islands with Queen issues, Edwards to 2/6 and George V to 5/-, some o.g. or part o.g., fair to fine (130)	E £30
821	Various, issues from 1903 to 1932, including 1916-23, 1922-29, with 5/- values, etc., mainly o.g. or part o.g., many fine (224)	E £22
822 ☆	NEVIS: 1876 4d. and 6d., S.G. 18, 19, both part o.g. but off-centre and a few perms. blunt (2)	£36
823 ☒	— 1883 ½d. on half 1d. lilac-mauve, S.G. 36, four copies, and another but surcharge inverted (reading down), tied to envelope addressed to Basseterre with "AO9" cancellations, dated "NEVIS SE 10 83", "ST. KITTS SP 11 83", a scarce item (see photo-plate VI) (1 item)	E £30
824	— The Collection, including a range of first types to 1/-, 1882-90 6d. green, etc., and St. Christopher with 1882-90 1/- and St. Kitts-Nevis with values to 5/-, some o.g. or unused, poor to fine . (108)	E £40
825	— The useful Collection, including 1861 1d., 4d., 6d. (3), 1/-, 1866 1d. (3), 4d. (4), 1/- (3), 1876 1/- unused, 1878 1d., 1879-80 1d. (2), 2½d., 1882-90 1/- and most lower values, 1883 surcharges, etc., unused and used, majority fair to fine (36)	E £25 to £30

NEWFOUNDLAND

826 P	Reprinted Die Proofs, 1857 issue, comprising 1d., 2d., 3d., 4d., 5d., 6d., 6½d., 1/-, all in violet, with defaced corners (8)	E £10 to £15
827 O	1857 3d. yellowish green, S.G. 3, a used copy with good to large margins, a little creased at lower corners, otherwise fine (1)	E £12 to £15
828 O	— 4d. scarlet-vermilion, S.G. 4, a used copy with small to good margins nearly all round but just cut-into at top-right. Cat. £600 (see photo-plate V) (1)	E £50 to £60
829 ☆	— 5d. brown-purple, S.G. 5, an unused copy with large even margins all round, very fine but for small thin spot (1)	E £7
830 ☆	— 6½d. scarlet-vermilion, S.G. 7, unused, good even margins, small thinning and few black marks at bottom. Cat. £250 (see photo-plate V) (1)	E £25 to £30
831 ☆	— 8d. scarlet-vermilion, S.G. 8, a fine unused copy with very large even margins all round (1)	E £10
832 ☆	— Another unused copy, good margins, small thinning and tiny corner crease (1)	E £8

Lot No.	NEWFOUNDLAND (continued)	Cat. or Est. Value
833 ☆	1860 2d. orange-vermilion, S.G. 10, an unused copy with good even margins all round, fine but has some black marks on reverse (1)	E £10
834 ☆	1861 2d. deep rose-lake and 2d. pale rose-lake, the two papers, S.G. 18, 23b, both unused and with margins all round but each has a tiny corner crease (2)	E £12 to £15
835 ☆	— Thin paper 2d. pale rose-lake, S.G. 23b, unused, good margins, fine but for small stain (1)	E £8
836 ☆	ditto 6d. pale rose-lake, S.G. 23d, an unused sheet of twenty (without sheet margins at sides), part o.g., fine (20)	£27 10s.
837	The remainder of the "Pence" types, including 1857 1d. (4), 3d. used and showing paper-maker's wmk. (with 1950 B.P.A. certificate), 1860 3d. (2), 6d. (two poor copies), 1861 1d., 4d. (3), 5d. (3), 6d. (3), 6½d. (2), 8d. (2) and 1/- (2), majority part o.g. or unused, many fine but some doubtful pmks. (26)	E £35 to £40
838	The Collection of "Pence" type, including 1857 1d. (5), 5d., 1860 2d. (2), 3d. (3), 6d., 1861 with values to 1/-, some unused, poor to fine, some faults (39)	E £30 to £35
839 ☆	1866, Seal 5c. brown, S.G. 26, a very fresh unused copy, centred slightly to top and some perfs. blunt or pulled (see photo-plate V) (1)	£50
840 P	1910, litho. 1c., 2c. (2), 3c., 4c., 5c., 6c. (type B), 8c., 9c., 10c. (2), 12c., 15c. (2), gummed imperf. horizontal pairs, few small stain spots or slight creases, otherwise fine (28)	E £40 to £50
841 ☆	— ditto set with both types of the 6c., S.G. 95-105, all part o.g. and mostly fine but 12c. has a crease (12)	£17 15s.
842 ☆	1911, recess-printed set, S.G. 111-116, all part o.g. (hinge remainders), 10c. has tiny black spot on reverse, fine but for a few blunt perfs. (6)	£23
843 ☆	— ditto 10c. purple-black, a horizontal pair, variety imperf., S.G. 114b, mint and very fine (see photo-plate V) (2)	£50
844 ☆	1911, Coronation set with shades, S.G. 117-127, all part o.g. and mostly fine (14)	£20 5s.
845	The Collection of issues from 1866 to 1918, including 1866, Seal 5c. brown (2), 13c. (3), 1868-73 3c. vermilion (2), Seal 5c. black (3), a range of the 1876-79, rouletted issue, 1897 to 60c. (2), 1897-1918 set with shades and duplicates, a range of other sets, etc., unused and used, majority fair to fine, an interesting lot (189)	E £70 to £80
846	A Collection of issues to 1918, in red "Utile" loose-leaf album, including 1857 1d., 8d. (no margins), 1860 2d. (no margins), 3d., 1861 2d. and values to 1/-, 1866 5c. brown, 13c., 1868-73 3c. vermilion (2), 5c. black (2), 1887 10c. (2), 1897 to 60c. (2), etc., unused and used, poor to fine (153)	E £40
847 +	1921, Halifax, narrow spacing 35c., no stop and "1" below "f", S.G. 148h, well tied to entire, a little buckled or creased, small stain spot (1)	£35
848 ☆	1923-24 2c. carmine, horizontal pair, variety imperf., S.G. 150a, mint and fine (see photo-plate V) (2)	£35
849 P	1928-29 3c., cut-down Die Proof in issued colour, ungummed, fine (1)	E £7
850 P	— 4c., two rare Proofs in orange and green, imperf. (cut-down), both ungummed, former has small crease, otherwise fine (2)	E £10 to £15
851 P	1928-29 4c., four progressive Die Proofs, similar to issued colour, one marked in pencil "final" (three horizontal creases), others fine (4)	E £20
852 P	— 14c., Die Proof in ultramarine, fine (1)	E £7
853 ☆	1929-31 4c. reddish purple, horizontal pair, variety imperf., S.G. 183a, mint and very fine (2)	£45

NEWFOUNDLAND (continued)



854

Lot No.		Cat. or Est. Value
854	†☆ 1930, "COLUMBIA" 50c. ON 36c., S.G. 191, LARGE PART O.G., FINE BUT FOR MINUTE STAIN SPOT IN MARGIN AT LEFT. RARE. With B.P.A. certificate (see photo) (1)	£850
855	†☆ 1931, Air, without and with wmk. sets, S.G. 192-197, part o.g. and fine but for a few blunt perms. (6)	£19 16s.
856	†☆ — ditto, ditto, ditto sets, part o.g., wmkd., \$1 slightly creased (6)	£19 16s.
857	†☆ — ditto, ditto, ditto, a somewhat similar lot, the wmkd. values are a little creased and soiled and 15c. vertical pair with and without wmk., all part o.g. (8)	£23 6s.
858	†☆ — ditto, without wmk. 50c., a fine o.g. horizontal pair, variety imperf. between, S.G. 193a (see photo-plate V) (2)	£200
859	☆ — ditto, ditto 50c., a mint vertical pair, imperf., S.G. 193b, fine. With B.P.A. certificate (1967) (see photo-plate V) (2)	£180
860	†☆ — ditto, ditto \$1, a mint vertical pair, imperf., S.G. 194, fine. With B.P.A. certificate (1967) (see photo-plate V) (2)	£200
861	†☆ — ditto, with wmk. 50c., mint horizontal pair, variety imperf. vertically, S.G. 196a, a few minute gum thinnings, otherwise fine (see photo-plate V) (2)	£120
862	P 1932 2c., imperf. Plate Proof in purple on unwmkd. paper, a large-margined horizontal pair, faint crease, fine (2)	£ 5
863	☆ — 3c. orange-brown, horizontal pair, variety imperf., S.G. 211a, mint, a trifle gum-creased, fine (2)	£20
864	☆ — 5c. maroon, horizontal pair, variety imperf., S.G. 213a, mint, a trifle gum wrinkled, fine (2)	£25
865	P — 30c., Die Proof in issued colour on wove paper, signed and dated in pencil "5/8/31", fine (1)	£ 7
866	☆ — 30c. ultramarine, horizontal pair, variety imperf., S.G. 220a, mint, few small gum wrinkles, fine (2)	£45
867	†☆ 1932, DO-X \$1.50 on \$1, S.G. 221, part o.g., centred a little to right, fine (see photo-plate V) (1)	£70
868	†☆ — ditto, another copy, part o.g., fine (see photo-plate V) (1)	£70
869	†☆ — ditto, another copy, tied to envelope addressed to London by St. John's dated slogan pmk., fine (see photo-plate V) (1 item)	£60
870	☆ 1932-38 1c. grey, horizontal pair, variety imperf., S.G. 222a, mint, gum wrinkled, fine (2)	£9
871	☆ — 2c. green, horizontal pair, variety imperf., S.G. 223a, mint, very fine (2)	£11
872	☆ — 4c. carmine, horizontal pair, variety imperf., S.G. 224a, mint, gum creased, otherwise fine (2)	£11



828



830



839



843



858



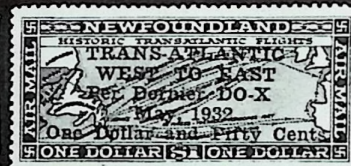
861



859



848



867



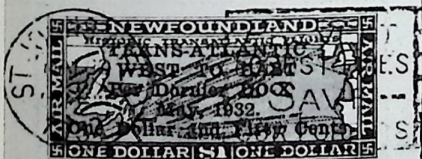
860



868



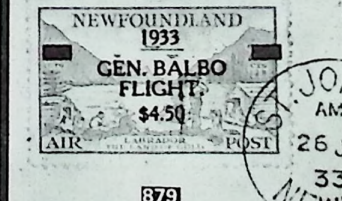
877



869



878




879

Lot No.	NEWFOUNDLAND (continued)	Cat. or Est. Value
873 ☆	1932-38 5c. violet, Die II, horizontal pair, variety imperf., S.G. 225ca, mint, very fine (2)	£20
874 P	— 48c., a scarce Die Proof in deep purple on thick paper, fine (1)	E £10
875 ☆	1933, Air set, S.G. 230-234, part o.g. and fine (5)	£10
876 †	— ditto, part o.g. set, 10c. creased and used set, 5c. slightly creased, few perfs. short or damaged (10)	£22
877 ☆	1933, Balbo \$4.50 on 75c., S.G. 235, large part o.g. and very fine (see photo-plate V) (1)	£150
878 †	— ditto \$4.50 on 75c., tied by circular "ST. JOHN'S 26 JUL 33 NEWF'D" pmk. to envelope addressed to Rome, usual green cachet on front and dated markings on reverse, stained, otherwise fine (see photo-plate V) (1 item)	£150
879 †	— ditto, another copy, used on flown cover, usual dated markings, the cover is slightly soiled, the stamp has black ink smudge, is slightly soiled and perfs. at bottom short (see photo-plate V) (1 entire)	E £17 to £20
880 P	1933, Humphrey Gilbert 1c. (3), 2c., 3c., 14c., 15c., 20c. (2), 32c., finished Die Proofs in black on thick wmkd. paper, fine (10)	E £50
881 ☆	— ditto set, S.G. 236-249, all part o.g. (14)	£11
882 ☆	— ditto, perf. 13½ set, perf. 14 20c., 24c. and 32c., S.G. 236-249, 247a, 248b, 249a, all part o.g., fine but for a few blunt perfs. and faint gum creases (14)	£24 2s.
883 P	— ditto 3c., Die Proof in issued colour, fine (1)	E £8
884 P	— ditto 4c., Die Proof in issued colour, fine (1)	E £8
885 ☆	— ditto 7c., 9c., 14c., 20c., 24c., 32c., all in mint horizontal pairs, 7c., 20c. have gum creases, others fine (12)	£19 13s.
886 ☆	— ditto 24c., horizontal pair, variety imperf., S.G. 248a, mint, few small gum wrinkles, fine (2)	£28
887 ☆	The Collection, issues from 1910, including 1910, litho. to 15c., with 1c., perf. 12 x 11 block of four, one the "NFW" error, 1911, Coronation to 15c., 1919, Caribou to 36c., 1923-24 to 24c., 1931, Air, no wmk. 15c., \$1, wmkd. 15c., 50c., 1932 to 30c., 1933, Humphrey Gilbert set, later issues, etc., all o.g. or part o.g. (179)	E £38
888	The Collection of issues from 1908, including 1919, Caribou set with some duplicates, 1919, Alcock \$1 on 15c. (part o.g. but has gum thinning), 1923-24, set with some shades and duplicates, Publicity sets, 1937, Long Coronation set with comb. perf. 13 set, except for 25c., other sets, etc., nearly all o.g. or part o.g. and mostly fine (228)	E £25 to £30
889 ○	The used Collection, issues from 1910, including 1911, Coronation to 15c., 1919, Caribou to 36c., 1923-24 to 24c., 1932 to 30c., other sets, etc., poor to fine (198)	E £17
890	Various on stock-sheet, including 1911, recess-printed set (part o.g.), etc., also two Nova Scotia stamps, unused and used, mixed condition (43)	E £10 to £15

STAMPEX 1969

Royal Horticultural Society Hall, Greycourt and
Elverton Street, Westminster, London, S.W.1.

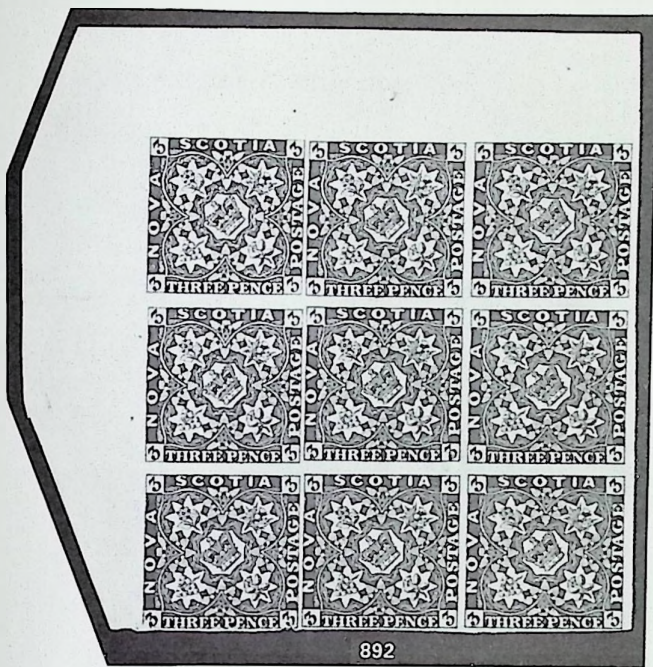
MARCH 5th-13th



Lot No.

Cat. or Est. Value

- 891 ○ NOVA SCOTIA: 1851-57 1d. red-brown, S.G. 1, a lightly cancelled horizontal pair, close at top-left corner, otherwise with good to large margins all round, small closed tear at lower-left corner, otherwise very fine (see photo-plate VI) (2) E £50



- 892 ☆□ — ditto 3d. DEEP BLUE, S.G. 2, A FRESH UNUSED CORNER BLOCK OF NINE, MARGINS AT PLACES OTHER SIDES, OF FINE DEEP COLOUR. There is a heavy horizontal crease through the centre row under the word "SCOTIA", and similar less heavy creases elsewhere. There are several thinnings and a tear of about 6mm. into one stamp which has other defects, nevertheless A RARE ITEM OF VERY GOOD APPEARANCE. CAT. £675 (see photo) (9) E £150 to £200
- 893 ☆ — ditto 3d. bright blue, part o.g., creased and traces of gum thinnings, and 3d. pale blue, regummed, apparently unused, surface scrape at one corner, both with margins all round (2) E £15 to £20
- 894 — ditto 3d. (2, one apparently unused), 6d. deep green, margins all round but faults, 1860-63 1c. (3), 5c., 8½c. (block of nine, two singles), 12½c., part o.g. except four (19) E £18
- 895 ○ — ditto 6d. yellow-green, S.G. 5, lightly cancelled, small to large margins, fine but for crease (see photo-plate VI) (1) E £15
- 896 ☒ — 1860-63 10c., bisected diagonally, S.G. 28a, tied to entire addressed to Halifax, circular dated "WOLFVILLE" and oval "H M Y MY 7 1861 N.S." markings on reverse, a trifle creased and soiled. With "Royal" certificate (1965) (see photo-plate VI) (1) £80

Lot No.

Cat. or Est. Value

897	ST. CHRISTOPHER: The Collection, including 1870-76 to 6d. (3), 1882-90 6d., unused, 1/-, a few surcharges, etc., unused and used, mostly fair to fine (24)	E £15 to £20
898 ☆	ST. KITTS-NEVIS: 1920-22 set, S.G. 24-36, part o.g., small stain spots (13)	£55
899 ☆	— ditto 10/- and £1, S.G. 35, 36, part o.g., £1 has few perms. short (2)	£52 10s.
900 ☆	— 1923, Tercentenary set, S.G. 48-60, all o.g. or part o.g., fine (for £1 see photo-plate VI) (13)	£300
901	— Various to 1929, including 1903, 1905-18 to 5/-, 1920-22 to 10/-, etc., mainly o.g. or part o.g., many fine (143)	E £16
902 ☆	ST. LUCIA: 1863 4d. and 6d., S.G. 7, 8, both unused and showing traces of o.g., slightly off-centre and latter very faintly thinned (2)	£47
903	— The useful Collection of Queen issues, including 1860 1d. (3), 4d., 6d. (2), 1863 1d., 1864 to 1/- (4), with perms. and shades, 1882-84 to 6d., with both perms. of the 4d., later issues and surcharges, etc., unused and used, majority fair to fine (59)	E £25 to £30
904	— The Collection, issues to 1926, including 1860 4d. (2), 6d., 1864 to 1/- (2), 1891-98 5/-, 1891-92 ½d. on 3d., ½d. on half 6d. (pair), Edwards and George V, some o.g. or part o.g., poor to fine (79)	E £22
905 ☆	— Postal Fiscals: 1881 1/- orange, variety "SHILDING", S.G. F4b, part o.g., slight crease, otherwise very fine (see photo-plate VI) (1)	£50

ST. VINCENT

906 ☆	1862 1d., 6d. (pair), 1863-66 6d., S.G. 3, 4, 6, all part o.g., off-centre, fine (4)	£60
907 ☆	1869 4d. yellow, S.G. 12, part o.g., centred a little to top, fine (see photo-plate VI) (1)	£50
908 ☆	— 1/- indigo, S.G. 13, part o.g., centred to lower-left, tiny mark on margin at top, fine (1)	£50
909 ☆	1883-89, perf. 14 6d. violet, S.G. 48, part o.g., a little gum wrinkled, fine (1)	£20
910 ☆	1899 set, 1902 set with some duplicates, including 5/- (rubbed), all o.g. or part o.g., mostly fine (25)	£35 7s.
911	The useful Collection of Queen issues to 1881, including 1861 6d., 1863-66 6d., 1866 4d. (2), 1/- (3), 1869 4d., 1/- (both colours), 1872 1/-, 1873-74 1/-, 1875 1/-, 1877 4d., 1880 6d., 1/-, 1881 4d., etc., nearly all used with a few better pmks., very mixed centring and some have faults, nevertheless an interesting and valuable lot (39)	E £75 to £100
912	A Collection of Queen issues to 1880, including 1861 6d. deep yellow-green, 1862 1d. (2), 6d. (3), 1863-66 1d. (2), 6d. (2), 1866 4d., 1/- (3), 1869 4d. (part o.g.), 1/- indigo (3), 1/- brown, 1871 6d. (2), 1877 6d. (2), 1/- (4), 1877 6d. (2), 1877 (July) 4d., 1880 6d. (2), 1/-, etc., majority used, poor to fine, some with faults (51)	E £60 to £70
913	The duplicated Collection of Queen issues from 1881, including 1883-89, perf. 14 5/- (5), perf. 12 1/-, surcharges with 1890 2½d. on 4d. (2), etc., o.g. and used, poor to fine, a few with faults (145)	E £25 to £30
914	The Collection of Queen issues from 1883, including 1883-84 4d., 1883-89, perf. 14 6d. violet, 5/- (2), and most lower values, 1890 2½d. on 4d., 1899 set, etc., unused and used, mostly fine (47)	E £25 to £30
915	A small selection of Queen issues to 1880, including 1862 1d. (2), 6d. (3), 1863-66 1d. (2), 6d., 1869 1/- indigo (2), 1/- brown, 1877 1/- (3), 1880 6d. (2), etc., majority used, poor to good, some with faults (31)	E £34



584



585



580



590



592



664



667



699



670



EX 681



682



EX 797



799



EX 807



810



786



895



891



EX 900



905



907



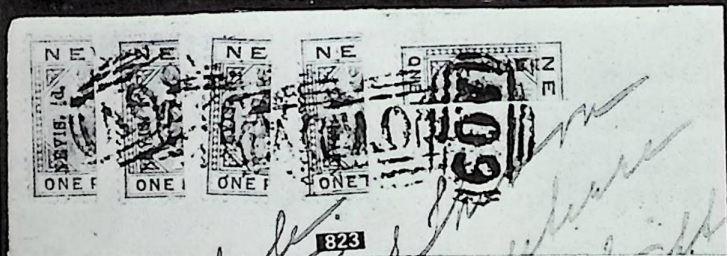
EX 916



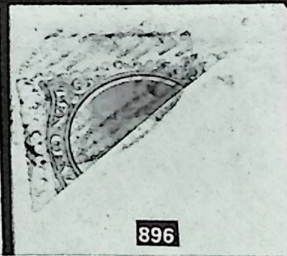
917



927



823



896

Lot No.	ST. VINCENT (continued)	Cat. or Est. Value
916 ☆	1904-11 set, S.G. 85-93a, all o.g. or part o.g., £1 centred to lower-right and rubbed (for £1 see photo-plate VI) (8)	£100
917 ☆	— £1, S.G. 93a, part o.g., centred slightly to top, a little rubbed and slight gum crease (see photo-plate VI) (1)	£90
918 ☆	1913-17 ½d., 1d. (2), 2d. (2), 2½d., 3d. (4), 4d., 5d., 6d., 1/-, 2/-, 5/- and £1, all o.g. or part o.g., shades, papers, mainly fine (17)	£33 13s.
919 ○	— ½d., 1d. (2), 2d. (4), 2½d., 3d. (3), 4d., 5d., 6d., 1/- on green, 2/-, 5/- and £1, all used, £1 fine, others mostly fine (18)	£49 2s.
920 ☆	— £1, S.G. 120, o.g., from bottom of sheet, centred slightly to left, fine (1)	£28
921 ○	1921-32 set, S.G. 131-141, all used, mostly fine (15)	£40
922	The Collection, issues to 1932, including 1861 6d. deep yellow-green, 1866 1/-, 1869 4d., 1/-, both colours, 1872 1/-, later Queens to 5/-, 1902, 1904-11 to 5/-, 1913-17 to 5/-, etc., some o.g. or part o.g., poor to fine (113)	E £48
923	Various, issues from 1899 to 1932, including 1902 to 5/- (2), 1921-32 to 5/- (2), etc., chiefly o.g. or part o.g., mainly fine (109)	E £22
924 ○	Cancellations: The Collection, comprising Biabou (2); Bequia (4, and entire); Calliaqua (6); Chateaubelair (4, one abbreviated type and entire); Cumberland (George V 2½d. on entire); Canouan (3); Colonaire (3); Georgetown (34, mostly on Queen 1d. red); Kingstown (15, all abbreviated and all except one on Queen 1d. drab); Layout (3); Mesopotamia (2, and entire); Stubbs (8, and entire); Union (9, and two entires), and another, poor to fine (some faults), the strikes fair to fine, an interesting lot (101 stamps)	E £80
925	The Collection, including Queen issues with an entire, 1883-89 5/-, 1904-11 to 5/-, George VI to £1 (2) and \$4.80, 1955 to \$2.50 (block of four, two singles), etc., o.g. and used (170)	E £23
926	The Collection, issues from 1915, including War Stamps with blocks, George VI to £1 and \$4.80, E.II to \$2.50 and \$5, etc., all used except for the War Stamp blocks (446)	E £15
—		
927 ☆	TOBAGO: 1879 £1 MAUVE, S.G. 6, PART O.G. (heavily mounted), centred to lower-left, corner creased, has slight vertical crease, a trifle soiled. VERY RARE (see photo-plate VI) (1)	£550
928	— The Collection, including 1882-84 4d., surcharges, Trinidad with a range of Britannia types and values to 5/-, o.g., and Trinidad and Tobago with values to 5/-, some o.g. or part o.g., poor to fine (184)	E £38
929 ☆	— The useful Collection, including 1879 to 1/-, 1880 set, 1882-84 to 4d., a range of surcharges, etc., unused and used, some have slight faults (39)	E £20 to £25
930 ☆	TRINIDAD: 1896-1900 set with both 1d., S.G. 114-124, all o.g. or part o.g., 10/- thinned, others fine (11)	£97 5s.
931 ☆	— ditto £1, S.G. 124, o.g., few perfs. a little short, fine (1)	£38
932 ☆	— 1904-09 5/- and £1, S.G. 144, 145, part o.g., a little rubbed, otherwise fine (2)	£42 5s.
933	— The useful Collection, including a range of imperf. Britannia types with some Lithos., 1859 1/-, a good range of later Britannia types with various perfs. and printings, later values to 5/- (3), etc., unused and used, majority fair to fine but some earlier issues have faults (72)	E £60 to £80
934 ☆	TRINIDAD AND TOBAGO: 1921-22 £1, S.G. 215, part o.g., centred to right, fine (1)	£24
935 ☆	— 1922-28 set, S.G. 216-229, all o.g. or part o.g., fine (14)	£29 7s.

Lot No.		Cat. or Est. Value
936 ☆	TURKS ISLANDS: 1867 6d., 1/-, and 1881 6d., 1/-, S.G. 2, 3, 51, 52, all part o.g. or unused (4)	£41
937	— The useful Collection, including 1867 1d., 6d., 1/- (5), 1873-79 1d. (5), a range of "½" and "4" surcharges with some scarcer items, later issues, etc., unused and used, mostly fair to fine (56)	E £40 to £50
938	— The Collection, including 1867 6d., 1/-, 1881 "½" on 1d., "½" on 6d., "½" on 1/- (2), "4" on 6d., etc., and Turks and Caicos Islands, with 1900 to 3/-, 1909, 1913-18 to 3/-, 1921 1/-, 1922-26 to 3/-, 1928 to 10/-, many o.g. or part o.g., mainly fine (105)	E £38
939 ☆	TURKS AND CAICOS ISLANDS: 1900 set, S.G. 101-109, all o.g. or part o.g., mostly fine, 4d. slightly stained (10)	£22 19s.
940	— Various, issues to 1926, including 1900 to 2/-, 1909 to 2/-, 1913-18 2/- on greenish-white (2), etc., mainly o.g. or part o.g., chiefly fine (94)	E £22
941 ☆	VIRGIN ISLANDS: 1866, toned paper 6d. (pair), 1867-68, coloured margins 1/- on toned paper (2), and 1888 4d. on 1/-, S.G. 7, 19, 42, all part o.g. or unused, one copy of S.G. 19 has crease (5)	£26 10s.
942 ☆	— 1879 1d. (3, two with upright wmk.), 1880 1d., 2½d., and 1883-84 ½d. yellow-buff, all o.g. or part o.g. and mostly fine (6)	£34 5s.
943	— The useful Collection of Queen issues, including a good range of earlier types with values to 1/- (2), shades, perms., 1887-89 to 1/- (two shades), 1899 set, etc., unused and used, mostly fair to fine (48)	E £35 to £40
944	— The Collection, issues to 1928, including 1866 6d., 1867-68 1/-, 4d. (3), with coloured margins 1/-, 1879 1d., 1880 1d., 2½d., 1883-84 ½d. yellow-buff, 1887-89 to 1/-, 1888 4d. on 1/-, 1899 to 5/-, 1904 to 2/6, 1913-19 to 5/-, 1922-28 to 5/- (2), majority o.g. or part o.g., mainly fine (73)	E £42
945	— Various, issues from 1899 to 1928, including 1899 to 5/- with both ½d. errors, 1904 to 5/- (2), 1913-19 to 5/- (3), 1922-28, with values to 5/-, o.g. and used, mainly fine (136)	E £54

MISCELLANEOUS

946	A Collection of British West Indies, in two black loose-leaf albums and loose in envelopes, strong in George VI and E.II issues, including Antigua to £1 and \$4.80; Bahamas with £1 values; Barbados with values to 5/- and \$2.40; Bermuda to £1; British Guiana to \$3 and \$5; Dominica to \$2.40; Jamaica to £1; Montserrat to £1 and \$4.80; St. Kitts-Nevis to \$4.80; St. Lucia; St. Vincent; Trinidad and Tobago, etc., also a few Ascension, United Nations, etc., many o.g. or part o.g. (few thousands)	E £130 to £150
947	The West Indian Commonwealth Collection in three blue loose-leaf albums, chiefly issues from 1935 to 1959, including Antigua; Bahamas; Barbados; Cayman Islands; Dominica; Grenada; Bermuda; Falkland Islands; Jamaica; Montserrat; St. Kitts-Nevis; St. Lucia; St. Vincent; Trinidad and Tobago; Turks and Caicos Islands; Virgin Islands, etc., chiefly o.g. or part o.g., values to 10/-, \$2.40, Commemoratives, etc., mostly fine (hundreds)	E £100 to £125
948	The selection of British North American Provinces, comprising British Columbia, with 1860, perf. 14 2½d., 1865, perf. 14 5c., 10c.; Prince Edward Island; New Brunswick, with 1851 3d., 1860-63 5c. sap-green; Nova Scotia, with 1851-57 1d., 3d., etc., unused and used, mixed condition (37)	E £30 to £40

END OF SALE

IMPORTANT NOTICE

The times for the viewing of lots prior to each Sale are given on the inside front cover of the catalogue. **If clients find it impossible to attend on the days and times allocated for viewing, we would emphasise that IT IS ESSENTIAL FOR US TO BE GIVEN 24 HOURS NOTICE of their desire to see particular lots, at the same time letting us know the date of the Sale and lot numbers.**

UNLESS THIS IS DONE, WE REGRET THAT IT IS NOT POSSIBLE TO HAVE THE LOTS AVAILABLE AT SHORTER NOTICE.

LIST OF PRICES REALISED

Full List of Prices Realised will be available about a week after the completion of this Sale. As only a limited number will be printed, early notification is requested.

PRICE 4/-

Catalogue Subscribers receive Lists of Prices Realised immediately on publication. In most cases the Lists are enclosed with the newly published catalogue of a future Sale.

CATALOGUE SUBSCRIPTION FOR TWELVE MONTHS

All London Sales Catalogues	50/-
London Sales Catalogues covering only limited specialised interests (other than British Commonwealth)	25/-

ALL POST FREE

The Bond Street Stamp Auctions

Programme of Sales

at 1.30 p.m. each day

- FEBRUARY 3, 4, 5, 6** . . . **FIRST and SECOND DAYS—FOREIGN COUNTRIES**, including the "Sir Geoffrey Macnab" Austria; Crete, offered by order of a Continental collector; the "E. A. Hutchins" Czechoslovakia, also Collections of FRANCE, offered by order of Mrs. C. Hoveman, of Beckenham, Kent, and from the archives of the Baron de Veauce. **THIRD and FOURTH DAYS—AN OUTSTANDING SELECTION OF GREECE**, offered by order of a Continental collector.
Art Catalogue (3 plates and 203 inset illustrations) 10/- or 15/- with List of Prices Realised.
- FEBRUARY 17, 18, 19** . . . **GENERAL**, including the "Mrs. K. F. Hulse" George VI and E.II Collection; British Commonwealth, offered by order of a Vevey, Switzerland, collector; and a British Commercial Stock, offered by order of A. G. Thompson, Esq., of Hove, Sussex. Collections offered *en bloc* are followed by good groups of Australia, Ceylon, Cyprus, Egypt, INDIA (including P.O.'s Abroad), New Zealand, Sierra Leone, etc.
Catalogue (5 photo-plates) 4/- or 8/- with List of Prices Realised.
- MARCH 3, 4, 5** **"ALL-WORLD" SALE**, comprising the "C. Eshborn", the "L. Brandon" and the "W. O. B. Rees" Commonwealth Collections and the "W. J. J. Dodsworth" General Collection, etc. — CAPE TRIANGULARS (including Woodblock Errors), Cyprus, EGYPT, New Zealand, Rhodesia and SUDAN are prominent, with useful groups of Canada, Ceylon, Falkland Islands, Malta, St. Helena, etc., and, on first day, "Collections and Various" and an important selection of Air Stamps and Covers.
Catalogue (8 photo-plates) 4/- or 8/- with List of Prices Realised.
- MARCH 17, 18** **SPECIALISED GREAT BRITAIN**, comprising the "Mrs. G. Granger", the "C. Eshborn" and other important Collections and including a strong section of Postal History and an outstanding selection of issues from 1840 to E.II; also the rare and valuable 1884 De La Rue Book "Before and After the Stamp Committee" offered by order of Fred J. Taylor, Esq., of Boscastle, North Cornwall.
Art Catalogue (112 inset illustrations) 7/6 or 11/6 with List of Prices Realised.
- MARCH 19, 20** *Catalogue herewith.*
- MARCH 31, APRIL 1** . . . **FOREIGN COUNTRIES**, including the outstanding Collection of United States, offered by order of a Swedish collector; the "R. Potter" Germany; the "Mrs. J. Gilchrist" Israel; "C. Reisdorf" France and Belgium and other important properties.
Art Catalogue (Colour and Black/White illustrations) 7/6 or 11/6 with List of Prices Realised.

List of Prices Realised (2 and 3 days) 4/- (4 days) 5/-

Twelve month's Subscription for all London Catalogues and Lists of Prices Realised 50/- post free.



LONDON

List of Prices Realised at the Sale of BRITISH AMERICA

Held on MARCH 19th and 20th, 1969 by

H. R. HARMER LTD.,

41, NEW BOND STREET, LONDON, W1A 4EH.

Tel. No. 01-629 0218

LOT	£	s.	LOT	£	s.	LOT	£	s.	LOT	£	s.	LOT	£	s.
✓ 500	480	0	541	70	0	583	8	0	625	150	0	667	95	0
501	13	0	542	30	0	584	115	0	626	23	0	668	46	0
502	16	0	543	36	0	585	15	0	627	26	0	669	23	0
503	8	0	544	34	0	586	48	0	628	34	0	670	26	0
504	9	0	545	15	0	587	13	0	629	52	10	671	30	0
505	130	0	546	26	0	588	36	0	630	46	0	672	44	0
506	11	0	547	28	0	589	46	0	631	44	0	673	13	0
507	12	0	548	26	0	590	34	0	632	52	10	674	10	0
508	13	0	549	32	0	591	29	0	633	72	10	675	11	0
509	36	0	550	30	0	592	36	0	634	50	0	676	10	0
510	21	0	551	—		593	23	0	635	60	0	677	42	0
511	11	0	552	14	0	594	28	0	636	57	10	678	22	0
512	18	0	553	12	0	595	29	0	637	55	0	679	25	0
513	10	0	554	16	0	596	20	0	638	52	10	680	7	0
514	23	0	555	7	0	597	32	0	639	50	0	681	22	0
515	10	0	556	17	0	598	62	10	640	55	0	682	31	0
516	17	0	557	10	0	599	11	0	641	25	0	683	21	0
517	24	0	558	18	0	600	7	10	642	29	0	684	17	0
518	24	0	559	24	0	601	18	0	643	24	0	685	21	0
519	21	0	560	11	0	602	12	0	644	67	10	686	21	0
520	17	0	561	32	0	603	26	0	645	12	0	687	16	0
521	33	0	562	31	0	604	14	10	646	10	0	688	15	0
522	22	0	563	23	0	605	70	0	647	26	0	689	67	10
523	17	0	564	57	10	606	34	0	648	110	0	690	46	0
524	17	0	565	19	0	607	21	0	649	11	0	691	30	0
525	55	0	566	22	0	608	32	0	650	16	0	692	10	0
526	21	0	567	16	0	609	52	10	651	16	0	693	21	0
527	55	0	568	15	0	610	36	0	652	10	0	694	—	
528	22	0	569	46	0	611	25	0	653	44	0	695	48	0
529	60	0	570	9	0	612	8	0	654	52	10	696	8	0
530	13	0	571	30	0	613	19	0	655	16	0	697	15	10
531	18	0	572	36	0	614	82	10	656	200	0	698	100	0
532	13	0	573	28	0	615	26	0	657	62	10	699	14	0
533	550	0	574	220	0	616	21	0	658	85	0	700	100	0
533A	48	0	575	70	0	617	26	0	659	26	0	701	34	0
534	22	0	576	26	0	618	36	0	660	10	0	702	21	0
535	13	0	577	25	0	619	30	0	661	30	0	703	11	0
536	4	0	578	20	0	620	67	10	662	30	0	704	11	0
537	13	0	579	32	0	621	65	0	663	32	0	705	26	0
538	30	0	580	7	0	622	90	0	664	20	0	706	21	0
539	12	0	581	21	0	623	12	0	665	17	0	707	40	0
540	30	0	582	40	0	624	6	0	666	30	0	708	44	0

SALES, MARCH 19th and 20th, 1969

LOT	£	s.	LOT	£	s.	LOT	£	s.	LOT	£	s.	LOT	£	s.
709	17	0	757	16	0	805	85	0	853	20	0	901	21	0
710	14	0	758	50	0	806	24	0	854	550	0	902	8	0
711	24	0	759	22	0	807	17	0	855	8	10	903	40	0
712	46	0	760	50	0	808	20	0	856	6	10	904	30	0
713	50	0	761	42	0	809	34	0	857	7	0	905	24	0
714	38	0	762	28	0	810	11	0	858	110	0	906	14	0
715	33	0	763	30	0	811	27	0	859	110	0	907	23	0
716	200	0	764	36	0	812	11	0	860	110	0	908	17	0
717	65	0	765	28	0	813	12	0	861	60	0	909	6	0
718	23	0	766	17	0	814	18	0	862	4	10	910	11	0
719	42	0	767	9	0	815	15	0	863	6	0	911	—	
720	90	0	768	6	0	816	13	0	864	10	0	912	46	0
721	65	0	769	19	0	817	20	0	865	8	0	913	23	0
722	—		770	11	0	818	13	0	866	15	0	914	26	0
723	14	0	771	14	0	819	25	0	867	36	0	915	30	0
724	29	0	772	4	0	820	46	0	868	31	0	916	32	0
725	32	0	773	24	0	821	25	0	869	32	0	917	34	0
726	46	0	774	55	0	822	8	0	870	4	0	918	12	0
727	190	0	775	21	0	823	36	0	871	5	0	919	26	0
728	155	0	776	21	0	824	36	0	872	4	0	920	11	0
729	85	0	777	26	0	825	38	0	873	13	0	921	35	0
730	210	0	778	13	0	826	15	0	874	10	0	922	44	0
731	180	0	779	33	0	827	8	0	875	6	0	923	22	0
732	90	0	780	34	0	828	80	0	876	9	15	924	125	0
733	31	0	781	10	0	829	6	10	877	57	10	925	16	0
734	31	0	782	26	0	830	38	0	878	36	0	926	21	0
735	12	0	783	36	0	831	13	10	879	42	0	927	115	0
736	12	0	784	16	0	832	8	10	880	50	0	928	44	0
737	22	0	785	15	10	833	10	0	881	5	10	929	26	0
738	36	0	786	42	0	834	16	10	882	8	10	930	24	0
739	14	0	787	36	0	835	—		883	—		931	17	0
740	24	0	788	52	10	836	8	0	884	—		932	17	0
741	55	0	789	34	0	837	44	0	885	7	0	933	55	0
742	11	0	790	24	0	838	36	0	886	9	0	934	9	0
743	22	0	791	16	0	839	6	0	887	42	0	935	13	0
744	48	0	792	32	0	840	85	0	888	34	0	936	10	0
745	21	0	793	34	0	841	9	0	889	28	0	937	55	0
746	9	0	794	30	0	842	11	10	890	13	0	938	46	0
747	95	0	795	52	10	843	34	0	891	72	10	939	10	0
748	26	0	796	18	0	844	10	10	892	260	0	940	26	0
749	26	0	797	62	10	845	62	10	893	24	0	941	9	0
750	16	0	798	30	0	846	34	0	894	18	0	942	12	0
751	7	0	799	36	0	847	7	0	895	22	0	943	46	0
752	38	0	800	16	0	848	24	0	896	—		944	57	10
753	210	0	801	52	10	849	7	0	897	16	0	945	60	0
754	16	0	802	30	0	850	10	0	898	22	0	946	125	0
755	7	0	803	17	0	851	18	0	899	21	0	947	120	0
756	26	0	804	36	0	852	8	0	900	165	0	948	44	0

TOTAL FOR SALE £16,757

SEASON'S TOTAL TO DATE £446,200