

*J. W. Caymans*

3700 - 3702

# BRITISH AMERICA and COMMONWEALTH

*Postponed  
to April 5/6  
1971*

~~MARCH~~

~~15, 16, 17~~

~~1971~~



H. R. HARMER LTD

LONDON

**IMPORTANT**



**March 15th, 16th and 17th British America, and  
Commonwealth Sale has been  
POSTPONED**

The Sale **WILL TAKE PLACE** on  
**April 5th and 6th**

**1st Session** on Monday April 5th at 1.30 p.m.

**2nd Session** on Tuesday April 6th at **10.30 a.m.**

**3rd Session** on Tuesday April 6th at 1.30 p.m.

**VIEWING** will be from Wednesday to Saturday  
(morning) the previous week as usual.

---

**All other sales as arranged**

**BIDS MAY BE PHONED DAY  
OR NIGHT**

**01-629 0218**

**H. R. Harmer Ltd.**



10 11 12

**CONDITIONS OF SALE OF H. R. HARMER LTD.,**  
**SUBJECT TO WHICH ALL LOTS ARE OFFERED AT THIS AUCTION**

**Notice.** H. R. Harmer Ltd., the auctioneers, exercise great care to ensure that all statements as to cancellation, centring, colour, condition, date of issue or postmark, gum, paper, printing, provenance, quality, sheet position, status, use and watermark, etc., in the lot descriptions are reliable and accurate, and that each item, unless the contrary is indicated, is genuine and authentic. The statements, however, are not intended to be, are not and are not to be taken to be statements of fact or representations of fact. They are statements of the opinion of the auctioneers, and attention is particularly drawn to clause 6 below.

**1.—**The highest bidder for each lot shall be the purchaser thereof. Each lot is put up subject to any reserve price imposed by the vendor. If any dispute arises as to the highest bidder the auctioneer shall have absolute discretion to determine the dispute and may put up again and re-sell the lot in respect of which the dispute arises.

**2.—(a)** The bidding and advances shall be regulated by and at the absolute discretion of the auctioneer, and he shall have the right to refuse any bid or bids. **(b)** The purchaser of each lot shall immediately on its sale if required by the auctioneers give to them the name and address of the purchaser and pay to them at their discretion the whole or part of the purchase money. If the purchaser of any lot fails to comply with any such requirement the auctioneers may put up again and re-sell the lot; if upon such re-sale a lower price is obtained than was obtained on the first sale the purchaser in default on the first sale shall make good the difference in price and expenses of resale which shall become a debt due from him. **(c)** Where an agent purchases on behalf of an undisclosed client such agent shall be personally liable for payment of the purchase price to the auctioneers and for safe delivery of the lot to the said client.

**3.—(a)** The auctioneers reserve the right to bid on behalf of clients and vendors, but shall not be liable for errors or omissions in executing instructions to bid. **(b)** The auctioneers reserve the right before or during a sale to group together any lots belonging to the same vendor, to split up and to withdraw any lot or lots at the auctioneers' absolute discretion and without giving any reason in any case.

**4.—**Each lot shall be at the purchaser's risk from the fall of the hammer and shall be paid for in full before delivery and taken away at his expense by a purchaser in the United Kingdom within seven days of the date of sale and by a purchaser overseas within 14 days or such longer time as shall be agreed in writing between the auctioneers and the purchaser. If any purchaser fails to pay in full for any lot within the said time such lot may at any time thereafter at the auctioneer's discretion be put up for sale by auction again or sold privately; if upon such resale a lower price is obtained than was obtained on the first sale the purchaser in default on the first sale shall make good the difference in price and the expenses of resale which shall become a debt due from him.

**5.—**The auctioneers shall act as agents only and shall not be liable for any default of the purchaser or vendor.

**6.—(a)** Each lot shall be put up for sale as exhibited, with all faults and errors of description. Neither the auctioneers nor the vendor shall give any warranty to any purchaser or be liable for any fault or error of description or lack of genuineness or authenticity of any lot or item in any lot whether or not exhibited with any certificate of opinion or other supporting document or mark. **(b)** Notwithstanding paragraph (a) of this clause, if after the sale the purchaser of a lot shall prove it to be not genuine or not authentic or wrongly described the purchaser shall be at liberty to return the lot provided that he within 21 days of the date of the sale gives notice in writing to the auctioneers of intention to question as the case may be the genuineness or authenticity or description of the lot AND within 14 days after giving such notice (or in exceptional cases, such longer time as in the absolute discretion of the auctioneers they may in writing allow) returns to the auctioneers at their salesrooms the lot in the same condition as at the date of sale. The onus of proving a lot to be not genuine or not authentic or wrongly described shall lie with the purchaser. Proof of the inability of a recognised expert committee to express a definite opinion shall not discharge such onus. If a lot is sold with a certificate of opinion of a recognised expert committee that the lot is genuine or authentic, a subsequent certificate of such committee that the lot is not genuine or not authentic shall discharge such onus. In the case of conflict of opinion as to genuineness or authenticity or description the auctioneers shall have the right to rely on the opinion of an expert reasonably regarded by them to be a reliable authority. **(c)** If the purchaser of a lot shall discharge the onus in compliance with paragraph (b) of this clause the auctioneers shall rescind the sale and repay to the purchaser the purchase price paid by him. **(d)** Notwithstanding paragraph (c) of this clause no lot may be returned if subsequent to the sale it has been immersed in water or treated by any other process unless the auctioneers' permission to subject the lot to such immersion or treatment has first been obtained in writing. **(e)** A lot listed under "Collections and Various" or a lot stated to comprise or contain a collection, issues or undescribed stamps shall be put up for sale not subject to return and shall be taken by the purchaser with all (if any) faults, lack of genuineness and authenticity, and errors of description and number of stamps in the lot, and the purchaser shall have no right to return the lot.

**7.—**If a purchaser fails to comply with any condition of sale the damages recoverable by the auctioneers from him shall include any loss arising on, and the expenses of resale.







SALES 3700-3702

AT 1.30 P.M.

**Catalogue**  
 (WITH FOURTEEN PHOTO-PLATES)  
 of  
 On the FIRST and SECOND Days  
**BRITISH AMERICA**

including

A Collection from a prominent Philatelist in the West Indies

Notable countries include

**CANADA, CAYMAN ISLANDS, FALKLAND ISLANDS**  
**JAMAICA, NEVIS, NEWFOUNDLAND Etc.**

ON THIRD DAY

**BRITISH COMMONWEALTH**

including

Collections

*Offered by order of P. R. Darley, Esq., of London, S.E.**By order of the Hon. Justice C. G. Hall, of Robertson, C.P., South Africa**By order of Brig. Gen. K. H. McKibbin, of Kingston, Ontario, Canada*

**A Collection notably BASUTOLAND with OFFICIALS**

*Offered by order of Messrs. Sydney and Paul Chaplin,**sons of the late Mr. A. G. T. Chaplin, former Resident Commissioner of Basutoland*

A further portion of the Collection of

**CAPE OF GOOD HOPE***Offered by order of G. F. Watts, Esq., of Comberbach, Cheshire***CEYLON, GOLD COAST, Etc.**

To be sold by Auction on

**Monday, Tuesday and Wednesday**  
**MARCH 15th, 16th and 17th, 1971**

at 1.30 p.m. each day

by

**H. R. Harmer Ltd.**

*The International Stamp Auctioneers***41 NEW BOND STREET, LONDON, W1A 4EH**

Telegrams: "Phistamsel London, W.1"

Telephone: 01-629 0218

**C. H. C. Harmer, I. J. Glassborow, R. N. Haffner, Auctioneers**

Price Ten Shillings (50p); or 14/- (70p); with List of Prices Realised



### SYMBOLS USED IN THIS CATALOGUE

☆ **unused** (without gum unless otherwise stated); **Part o.g.** (unused with part original gum); **o.g.** (unused with full original gum slightly disturbed or alternatively having a previous mount); **Mint** (unused with original gum in Post Office state and mounted with a peelable hinge; **Unmounted mint** (as mint but never hinged).

- |  |                  |             |
|--|------------------|-------------|
| ○ Used.                                | E Essay.         | P Proof.    |
| ⊞ Block of four.                       | △ Used on piece. | ✚ Air mail. |
| ⊠ Used on letter, envelope, card, etc. | R Reprint.       |             |
| ⊡ Block larger than four.              | S Specimen.      |             |

The number of stamps or pieces in the Lot is given in brackets at the end of the description.

### CATALOGUE AND ESTIMATED VALUES

The quotations in the right-hand column of this Catalogue are from Stanley Gibbons', and other Catalogues and Supplements current at the time of lotting, unless preceded by the letter "E" when they indicate our estimate of the approximate market value.

### SATURDAY MORNING CLOSING

Our Offices will be **OPEN** only on Saturday mornings preceding a sale the following week, as under:

#### OPEN

February 20th

March 6th

March 13th

March 27th

April 3rd

#### CLOSED

February 13th

February 27th

March 20th

April 10th

April 17th

**EASTER:** Our Offices will also be closed April 9th and 12th.

### VIEWING TIMES FOR THIS SALE

Lots may be viewed on **Wednesday, Thursday and Friday** preceding days of Sale, from 10 a.m. to 4 p.m.; **Saturday, 10 a.m. to 12 noon;** and on days of Sale, 10 a.m. to 1 p.m.

# FIRST DAY OF SALE

## MONDAY, MARCH 15th, 1971

AT ONE-THIRTY P.M. PRECISELY

### BRITISH AMERICA

Lot No.		Cat. or Est. Value
1 ○	<b>ANTIGUA: 1903-09 ½d. to 2/-, 5/- S.G. 31-38, 40, all used, 2½d. pmk. has pierced paper, otherwise mostly fine</b> . . . . . (9)	£33.75
2 ☆	— <b>1921-29 £1, S.G. 61 part o.g., centred to bottom, has two faint diagonal creases</b> . . . . . (1)	£35
3 ☆	— <b>1932, Tercentenary set, S.G. 81-90 all part o.g., a few gum wrinkles, otherwise fine</b> . . . . . (10)	£40
4 ☆	— <b>ditto, ditto, another set, all part o.g., slightly gum wrinkled, otherwise fine (for 5/- see photo-plate I)</b> . . . . . (10)	£40
5 ☆	— <b>The Collection of issues to 1951, including 1884-86 to 1/-, 1908-17 set 1913 5/- (creased), 1921-29 Crown CA to 5/-, Script to 4/-, 1938-49 set, etc., all part o.g., many fine</b> . . . . . (77)	E £20 to £25
6 ☆	— <b>1966, Churchill Commemoration ½c., variety value at left instead of right, S.G. 170 EEB, unmounted mint and fine, also normal for comparison (see photo-plate I)</b> . . . . . (2)	£180
7 ○	<b>BAHAMAS: 1861, rough perf. 14 to 16 6d, grey-lilac, S.G. 6, lightly cancelled, has a few perfs. clipped, and slightly faded, otherwise fine. With "Royal" Certificate (1970) (see photo-plate I)</b> . . . . . (1)	£40
8 ☆	— <b>1884-98 £1, Venetian red, S.G. 57, large part o.g., centred slightly to left, has a few blunt perfs. otherwise fine (see photo-plate I)</b> . . . . . (1)	£45
9	— <b>The Collection of issues to 1898, including 1859 thin paper 1d., 1861 rough perf. 1d. (2), 4d., 1862 perf. 13 1d., 6d. (2, both with small faults), a good range of the 1863-80 issues with shades, values to 1/-, 1882 issues, 1883 4d. on 6d., 1884-98 to 5/-, etc., part o.g. and used, fair to fine</b> . . . . . (88)	E £70 to £80
10 ☆	— <b>1902 to 5/-, 1906-11 set, S.G. 60-67, 72-75, all part o.g., both 1/- have a few stain spots, one 2½d. slightly soiled, others fine</b> . . . . . (12)	£32.20
11 ☆	— <b>The Collection of George VI issues, including 1938-52 to £1, 1942, 1948 sets, etc., all part o.g., good to fine</b> . . . . . (61)	E £10
12 ☆	— <b>The selection of George VI issues, including 1931 2/- (2), 3/- (2), 1938-52 to £1 (2), 1942 Landfall set (3), 1948 Tercentenary set, Silver Wedding £1, shades etc., all part o.g., mostly fine</b> . . . . . (113)	E £16
13 △	— <b>1963, Freedom From Hunger 8d. sepia, the rare error, value and country omitted, lightly cancelled and on small piece of air-mail envelope, very fine, also normal stamp for comparison. Cat. £275 unused (see photo-plate I)</b> . . . . . (2) <i>This stamp, one of the twenty-five of the sheet of sixty mailed, was used on a letter to a firm of New York lawyers during the summer of 1963. An explanatory letter from the finder and press cuttings accompany the lot.</i>	E £175 to £200
14 ☆	— <b>The Collection, including 1884-98 to 5/-, 1912-19 to £1, 1920 Peace set, 1921-29 to £1 (gum toned), 1930 Tercentenary set, 1938-52 to £1, 1942 Landfall to £1 (2), 1948 Tercentenary set, etc., all part o.g., many fine</b> . . . . . (160)	E £50 to £55



## BARBADOS

Lot No.		Cat. or Est. Value
15 ○	1852-55 ½d. deep green, S.G. 2, lightly cancelled with good to large margins all round, a little soiled. With "Royal" certificate (1970) . . . . . (1)	E £10
16 ○	1858, imperf 1/- black, S.G. 12a, a horizontal pair with large margins all round but rather smudgy pmks. . . . . (2)	E £15
17 P	1873, 5/-, Die Proof in black on card, 2mm margins all round, Rare. (See photo-plate I) . . . . . (1)	E £50 to £60
18 ○	— 5/- dull rose, S.G. 64, used copy, with light circular dated cancellation, centred slightly to right, has a few small thin spots, some short perfs. (see photo-plate I) . . . . . (1)	£50
19 ☆	1875-78, perf. 12½ 4d. deep red, S.G. 68, part o.g., centred slightly to left, fine but for vertical crease . . . . . (1)	£22
20 ☆	— Perf. 14 1/- purple, S.G. 81, a part o.g. block of six (3 x 2), one stamp has minute thin spot, two small gum thinnings, otherwise fine. . . . . (6)	£72
21 ○	1878, smaller numeral 1d. on half 5/- dull rose, S.G. 88, lightly cancelled, few perfs. ragged otherwise fine (see photo-plate I) (1)	£95
22 ☆	1882-86, 5/- bistre, S.G. 103, part o.g., centred slightly to bottom, a few tiny stain spots reverse of perfs. at top, otherwise fine (see photo-plate I) . . . . . (1)	£40
23 ○	— Another copy, used, centred slightly to top, has one blunt perf., a little soiled, otherwise fine . . . . . (1)	£45
24 P	1892-99, 3d., eleven imperf. colour trials in orange with the values in various colours, unwmkd., part o.g., or un gummed, fine . . . . . (11)	E £50 to £60
25 P	— 3d., eleven imperf. colour trials in olive-green with the value tablets in various colours, unwmkd., part o.g. or un gummed, fine . . . . . (11)	E £50 to £60
26	The Selection of Queen issues, including a few Britannia types, 1882-86 to 1/-, 1882-99 set, 1897-98 white paper set, etc., part o.g. and used, mixed condition . . . . . (49)	E £15 to £20
27 ☆	1918 3/- green and bright violet, S.G. 200a, part o.g., centred slightly to lower-left, a few blunt perfs., and a trifle soiled, otherwise fine (see photo-plate I) . . . . . (1)	£42
28 ☆	The Collection of issues to 1952, including 1903 2/6, 1904-05, 1906 Nelson, 1909-10, 1912 sets, 1916-20 to 2/-, 1920-21 Victory set, 1921-24 to 3/-, 1925-35 to 3/-, 1938-47 to 5/- with perf. 13½ x 13 1d., etc., all part o.g. except three, mostly fine . . . . . (173)	E £45 to £50
—		
29 ☆	BERMUDA: 1922-34 10/- both papers, 12/6, S.G. 92 92a, 93, all part o.g., both 10/- have minute black specks on surface, and a few blunt perfs., 12/6 fine . . . . . (3)	£72
30	— The Collection of issues to 1936, including a few Queen issues, 1918-20 to 5/-, 1920-21, 1921 sets, 1922-34 to 2/6(4), etc., part o.g. and used, many fine . . . . . (102)	E £20
31 ☆	— 1938-53 10/- green and deep lake on green, S.G. 119, part o.g., fine . . . . . (1)	£18
32 ☆	— The Collection of George VI issues, including 1938-53 2/- (3), 2/6 (4), 5/- (3), 10/- (6), 12/6 (4), £1 (3, one the purple and black on red), etc., all part o.g., mostly fine . . . . . (50)	E £25

Lot No.

Cat. or Est. Value

- 33 ○ **BRITISH GUIANA: 1850-51 8c. green, S.G. 4, circular dated pmk., cut round but margins clear of frame, slight crease, thinned and a few small tears, mostly marginal. Cat. £350 (see photo-plate I)** E £80  
(1) to £100
- 34 ○ — ditto, 12c. blue, S.G. 5, cut-round, circular dated pmk., margins clear of frame, a little thinned. Cat. £300 (see photo-plate I) (1) E £50  
to £75
- 35 ○ — 1853-59 4c. pale blue, S.G. 20, a vertical pair with small to large margins practically all round, circular dated cancellation, a little stained on reverse and lower stamp with tiny tear and thinning (2) E £15  
to £20
- 36 ☆ — The Collection from 1889 to 1951, including 1889 to 96c., 1898 Jubilee set, 1905-07 set, 1913-21 to 96c.(4), 1921-27 set, 1934-51 set, 1938-52 to \$3(2), etc., all part o.g. except one, mostly fine (142) E £35
- 37 ☆ — The Collection of issues from 1913, including 1913-21 to 96c.(4), 1921-27 to 96c., 1931 set, 1934-51 set, 1938-52 to \$3(2), etc., all part o.g. mostly fine (106) E £20  
to £25
- 38 ☒ **BRITISH HONDURAS: 1888-89 2c. on 1d. rose, 2c. on 6d. rose, both bisected diagonally and tied by smudgy "O" in oval bars pmks. to soiled and creased wrapper, addressed to Germany, latter has corner perf. missing, dated "MUNICH 8 APR. '88" (1 item)** E £10  
to £15
- 39 ☆ — The Collection of issues to 1951, including 1891-98 to \$2, 1905-07 to \$2, 1913-21 to \$2, 1922-33 to \$2, 1938-47 set, etc., all part o.g. except one, mostly fine (123) E £25

## CANADA

- 40 ○ **1851, laid paper 6d. slate-violet, S.G. 2, an extremely fine used copy with enormous margins. With "Royal" certificate (1970) (see photo-plate I)** E £100  
to £125 (1)
- 41 ○ **1852-57, thin wove paper 3d. red, S.G. 6, blue cancellation, large margins, fine (1)** E £12  
to £15
- 42 ○ — ditto, 3d. red, a block of three, concentric circles pmks., small to large margins at places, small scissor cut between two stamps terminating in tear and a razor split at left just touching frame (3) E £15  
to £20
- 43 ○ — Medium hard wove paper 3d. deep red, S.G. 11, concentric circles pmk., large margins but tiny thinning and faint crease (1) E £10
- 44 ○ — ditto, 3d., two used copies with margins all sides, one slightly creased (2) E £15  
to £20
- 45 ○ **1857, thin soft ribbed paper 3d. red, S.G. 18, a used copy with small to large margins, fine but for tiny thinning at left (see photo-plate I)** E £15 (1)
- 46 ☆ **1857 7½d. pale yellow-green, S.G. 22, unused large margins, has small black mark on reverse, trace of red ink mark on surface, a trifle soiled, otherwise fine. Rare. Cat. £700. With "Royal" Certificate (1970) (see photo-plate I)** E £60  
to £80 (1)
- 47 ☆ **1859, 10c. black-brown, S.G. 33, part o.g. centred to lower-right, both lower corner perms. creased, otherwise fine. With B.P.A. certificate (1967) (see photo-plate I).** £400 (1)
- 48 ☆☐ **1870-78, 1c. block of twelve (4 x 3), one stamp with tiny gum thinning, and a block of nine (3 x 3), one with black marks on reverse, shades, mostly o.g., fine (21)** E £10  
to £15
- 49 ☆☐ **1888-97, 2c. dull sea-green, S.G. 103, an o.g. block of twelve (4 x 3), a little creased at places, few perms. split otherwise fine (12)** £33
- 50 ☆ — The Collection all part o.g. or unused, comprising 2c.(9, three pairs), 3c.(5, one is imperf.), 5c.(9, one is imperf., two pairs), 6c.(7 two pairs), 10c.(6, one pair), shades, many fine (36) E £35



CANADA (continued)		Cat. or Est. Value
Lot No.		
51	1897, Jubilee ½c. to 50c.(2), part o.g. and used, mixed condition . . . . . (15)	E £8
52 ☆	— ditto, ½c. to \$2 with some shades, \$4, \$5, S.G. 121–137, 139, 140, all part o.g. (some gum disturbed), good to fine, some with small faults (for \$5 see photo-plate I) . . . . . (18)	£350
53 ☆	— ditto, \$1 lake, S.G. 136, part o.g. centred slightly to top-left, slight gum thinning, some blunt perfs. . . . . (1)	£38
54 ☆	— ditto, \$2 deep violet, S.G. 137, part o.g., centred to top, a few slight gum creases and blunt perfs., otherwise fine (see photo-plate I) . . . . . (1)	£70
55 ○	— ditto, \$2 deep violet, S.G. 137, a used copy with bars type cancellation fine (see photo-plate I) . . . . . (1)	155
56 ☆	— ditto, \$3 bistre, S.G. 138, part o.g., centred slightly to top, small surface scrape, some slight creases and a few blunt perfs. (see photo-plate I) . . . . . (1)	£75
57 ☆	— ditto, \$4 violet, S.G. 139, part o.g., centred slightly to top, a little creased (see photo-plate I) . . . . . (1)	£95
58 ☆	— ditto, \$5 olive-green, S.G. 140, part o.g., centred to top, a little toned and creased (see photo-plate I) . . . . . (1)	£80
59	The selection of issues to 1908, including large and small "Cents" types, 1898–1902 to 20c., 1903–12 to 50c.(small tear), 1908 Quebec to 20c., etc., unused and used, mixed condition . . . . . (119)	E £20
60 ☆田	1927, Confederation Commemorative and Historical issue sets, also the Express 20c., all in imperf. blocks of four, all mint but some with slightly disturbed gum and a few very faint gum creases, one 5c. slightly stained (for 20c. see photo-plate III) (36)	E £80 to £90
61 ☆田	1928–29 1c., 2c., 5c., in imperf. panes of twelve (6 x 2), comprising two panes of six, tête-bêche, gum somewhat disturbed in places, 1c. block slightly stained, 5c. block has two gum thinnings (for 5c. see photo-plate III) . . . . . (36)	E £75 to £100
62 ☆	— 4c. and 12c., in vertical and horizontal pairs, variety imperf. horizontally and vertically respectively, mint and fine . . . . . (8)	E £20 to £25
63 ☆田	— The set, in imperf. blocks of four, mint but gum somewhat disturbed, 5c. faintly stained at left, 10c. has small gum thinning, otherwise fine (for \$1 see photo-plate III) . . . . . (44)	E £100 to £125
64 ☆	1930–31, Library 10c. olive-green, a mint imperf. horizontal pair from left of sheet fine but for a few faint stain spots (see photo-plate I) . . . . . (2)	E £40 to £50
65 ☆	OFFICIALS: The Collection from 1949 to 1963 with Special Delivery 10c.(2) all part o.g., mostly fine . . . . . (56)	E £25 to £30
66 ☆	The Collection in blue album, issues from 1859, including 1859 10c., 12½c., "Cents" types, 1897–98 to 10c., 1898–1902 to 20c., 1908 Quebec set, 1922–31 to \$1, 1928–29 set, 1930–31 to \$1, 1935 to \$1(4), 1942–48 to \$1(4), etc., all part o.g. or unused, poor to fine (409)	E £50 to £60
67	The Collection in green album, issues from about 1912, including 1912–18 to 50c., 1928–29, 1930–31, 1937–38, 1942–48 and 1946 to \$1, and following range of issues to about 1970, etc., part o.g. and used, mixed condition . . . . . (few hundreds)	E £10 to £15

Lot No.	CAYMAN ISLANDS	Cat. or Est. Value
68 ☒	Jamaica used in Cayman Islands: 1889 1d. tied to cover to Kingston by framed "CAYMAN BRAC/CAYMAN ISLANDS" cancellation and back-stamped Kingston Jan. 12, 1900 (see photo-plate IX) (1 item)	E £30
69 △	— 1883 ½d., 1889 1d. in pairs on separate pieces, and tied by violet oval "GRAND CAYMAN/POST OFFICE" pmks. of 1894 and 1893 respectively, a little soiled and stained, the right hand stamp of the 1d. pair torn and rejoined (2 items)	E £10 to £15
70 ○	— 1883-97 ½d., 1889-91 1d. adhering together and with two strikes of the "GRAND CAYMAN" double ring date-stamp, 1900-01 1d. with similar pmks., 1889-91 1d. two examples with part strikes of the oval "GRAND CAYMAN" violet obliteration, poor (4 items)	E £10 to £15
71 ☒	1901-02 6d. (pair and single), 1/- (two pairs), S.G. 6, 7, all tied to registered cover, by 1903 pmks., a trifle soiled, otherwise fine (1 item)	E £20
72 ☆田	1905-06 set, S.G. 8-12, fine o.g. or part o.g. blocks of four (20)	£52
1907		
73 ☆	Set, S.G. 13-16, all part o.g., fine but for a few blunt perfs. (for 5/- see photo-plate I) (4)	£68
74 ☆	Another set, all part o.g., a trifle gum toned and a few blunt perfs., otherwise fine (for 5/- see photo-plate I) (4)	£68
75 ○	Another set, all used, fine but for a few blunt perfs. and slightest trace of toning (for 5/- see photo-plate I) (4)	£76
76 ☆田	4d., 6d., 1/-, S.G. 13-15, in large part o.g., blocks of four, fine (12)	£72
77 ○田	4d., S.G. 13, a used block of four, one has crease, otherwise fine (4)	£18
78 ○田	4d. and 1/-, both in fine used blocks of four, on pieces (8)	£66
79 ☒	4d., 6d., 1/-, 1907-09 ½d., 1d., tied to cover to Scotland by "GEORGE TOWN" pmks. of 1908, a trifle soiled, otherwise fine (1 item)	E £10 to £15
80 ☒	6d. a block of four with "GEORGE TOWN" pmk. and tied to cover by "KINGSTON JAMAICA" pmk. of 1909, fine (1 item)	E £12 to £15
81 ☆	5/- a part o.g., horizontal pair, S.G. 16, a trifle soiled, otherwise fine (see photo-plate I) (2)	£100
82 △	Single copy tied to small piece, a trifle soiled, otherwise fine (see photo-plate I) (1)	£55
-----		
83 ☆	1907 (Sept.) ½d. on 1d., S.G. 17, a part o.g. horizontal pair, has a few black specks on reverse, otherwise fine (2)	£20
84 ☆田	— The same in a large part o.g. block of six (3 x 2) from lower-right corner of sheet with Plate number, gum toned (6)	£60
85 △	— The same in a horizontal strip of three, tied to small piece, fine (3)	£33
86 ○田	— The same in a used block of eight (4 x 2) from upper-left corner of sheet with Plate number, affixed to backing paper, slightly toned (8)	£88
87 ☆	1907 (Nov.) ½d. on 5/-, 1d. on 5/-, S.G. 18, 19, both part o.g., fine (see photo-plate II) (2)	£67
88 ○	— The same two values tied to small piece, ½d on 5/-, has small crease, 1d. on 5/- has small surface scrape. With B.P.A. Certificate (1966) stating... genuine cancelled by favour in 1910 (see photo-plate II) (1 item)	£92
89 ☆田	— ½d. ON 5/-, S.G. 18, A LARGE PART O.G. BLOCK OF NINE, ONE STAMP HAS SMALL STAIN SPOT, SOME BLUNT PERFS., OTHERWISE FINE (see photo-plate II) (9)	£288



## CAYMAN ISLANDS (continued)

Lot No.		Cat. or Est. Value
90	△ 1907 (Nov.) ½d. on 5/-, S.G. 18, tied to small piece, a little soiled, some blunt perfs., otherwise fine. With "Royal" certificate (1970) (see photo-plate II) . . . . . (1)	£42
91	△ — ½d. on 5/- and 1907 ½d. on 1d., tied to small piece, both slightly soiled or stained . . . . . (2)	£55
92	☆田 — 1d. on 5/-, S.G. 19, a part o.g. block of four, has a few black specks on reverse, and a few thinned and blunt perfs., otherwise fine (see photo-plate II) . . . . . (4)	£140
93	○ — 1d. on 5/-, used, has a few blunt perfs, slightly soiled, otherwise fine (see photo-plate II) . . . . . (1)	£50
94	△ — Another copy, tied to piece, has one short perf. at left, otherwise fine. With "Royal" certificate (1970) (see photo-plate II) (1)	£50
95	○ 1908 2½d. on 4d. brown and blue, S.G. 24, lightly pmkd., has one thinned perf. at left and slight crease. With "Royal" certificate (1970) (see photo-plate II) . . . . . (1)	£250
96	☆ 1908, Revenue 1d. on 4d., part o.g., has natural paper flaw, a trifle soiled on reverse, otherwise fine . . . . . (1)	£12
97	☆田 1907-09 4d. black and red on yellow, S.G. 29, a large part o.g. block of four from upper-right corner of sheet with Plate number, slightly off-centre, otherwise fine . . . . . (4)	£56
98	○ — 4d., S.G. 29, used, centred slightly to left, a trifle rubbed, otherwise fine . . . . . (1)	£16
99	☆田 — 5/- green and red on yellow, S.G. 32, an o.g. block of four from top of sheet, fine . . . . . (4)	£36
100	△ — Another copy, tied to small piece by 1912 pmk., fine . . . . . (1)	£10
101	○田 1908 1/- black on green, S.G. 35, a used block of four a little rubbed, otherwise fine . . . . . (4)	£16
102	☆ — 10/- green and red on green, S.G. 36, part o.g., a trifle rubbed otherwise fine (see photo-plate II) . . . . . (1)	£40
103	☆ — Another part o.g. copy, a trifle rubbed, otherwise fine (see photo-plate II) . . . . . (1)	£40
104	○ — 10/-, a lightly cancelled horizontal pair, centred slightly to right, a trifle rubbed, otherwise fine (see photo-plate II) . . . . . (2)	£90
105	≡ 1908, manuscript provisional, cover bearing "pd ½d. W J McC" in Ms., cancelled by "GEORGE TOWN CAYMAN ISLANDS/OC 16/08" pmk., fine . . . . . (1 item)	E £15
106	≡ — A similar cover but with October 14 pmk., fine . . . . . (1 item)	E £15
107	≡ 1908, cover to England, bearing 1905-06 1d., 2½d., pairs, 6d., 1907 ½d. on 1d., 1908-09 ½d., with George Town pmks. of July, 1908, with transit and receiving pmks. on reverse, a trifle soiled otherwise fine . . . . . (1 item)	E £12 to £15
108	☆ The Collection of issues to 1909, including 1901 ½d.(15), 1d.(6), 1901-02, 1905-06 sets, 1907 ½d. on 1d., 1907-09 to 5/-, 1908 10/-, blocks, etc., all part o.g., some stained and some a little stuck-down . . . . . (73)	E £30 to £35
109	☆ 1917 (Sept.), War Stamp, 1½d. on 2½d., the scarce type, S.G. 55, part o.g. from left to sheet, fine (see photo-plate II) . . . . . (1)	£75
110	☆ 1912-20 set to 10/- (6), mostly in blocks of four with some shades, also 1917 to 1920, the selection of War stamps with varieties, blocks, etc., all o.g. or part o.g., some staining or toning, otherwise mostly fine . . . . . (134)	E £50 to £60
111	☆ — Values to 10/- (2), without shades and 5/-, 1921-26 both wmk. to 10/-, S.G. 40-50, 51, 52b, 60-83, all part o.g., some a little stuck-down, a few stain spots, otherwise mostly fine . . . . . (34)	E £25 to £30

## CAYMAN ISLANDS (continued)

Lot No.		Cat. or Est. Value
112	○ 1921-26, Mult CA 4d to 10/-, Script CA set without shades but with additional 3d., S.G. 61-67, 69-83, all used, some lower values with faults, otherwise mostly fine . . . . . (19)	£36
113	□ — 4½d. plate-proof in blue on un gummed and unwatermarked paper, a block of ten (5 x 2) from right of sheet, has a few creases and slightly soiled . . . . . (10)	E £10 to £15
114	☆田 — Mult. CA values to 5/- (2), Script to 1/-, with some shades, all in part o.g., blocks of four, mostly fine . . . . . (84)	E £10 to £15
115	☆ — ditto, CA values to 10/- with only two 5/-, script CA set, S.G. 60-65, 67, 83, all part o.g., a few with slight gum wrinkles, otherwise fine . . . . . (22)	£31
116	○ — The selection, including Mult. CA to 5/- (4), 10/- (4), Script to 10/-, blocks of four all used, etc., many fine . . . . . (94)	E £50 to £60
117	S 1932, Centenary set, S.G. 84-95, all perf. "SPECIMEN" part o.g., some blunt or missing perms., otherwise fine . . . . . (12)	£30
118	☆ — ditto, Set, all part o.g., some a little gum toned, otherwise fine (for 10/- see photo-plate II) . . . . . (12)	£75
119	☆ — ditto, Another set, all part o.g., 5/- gum toned, others with a few gum wrinkles, otherwise fine (for 10/- see photo-plate II) . . . . . (12)	£75
120	☆田 — ditto, Set to 2/-, S.G. 84-93, in large part o.g. blocks of four from bottom of sheet with imprint, fine but for a few small stain spots . . . . . (40)	£46
121	☆田 — ditto, Set in o.g. or large part o.g., blocks of four from upper-right corners of sheets, some blunt perms., otherwise mostly fine (for 10/- see photo-plate II) . . . . . (48)	£300
122	○ — ditto, A used set, some on small pieces, some small faults (for 10/- see photo-plate II) . . . . . (12)	£90
123	☆田 — ditto, 2/-, S.G. 93, a fine mint block of four from right of sheet . . . . . (4)	£24
124	○ — ditto, 10/-, S.G. 95, lightly cancelled, centred slightly to bottom, fine (see photo-plate II) . . . . . (1)	£65
125	○ — ditto. The used Collection, including values to 5/- (2), covers pieces, blocks of four, various cancellations, etc., many fine . . . . . (66)	E £30
126	☆田 1935 set, S.G. 100-111, in large part o.g., blocks of four, mostly marginal, 1d. and 1½d. blocks have small thin spots, otherwise fine . . . . . (48)	£68
127	☆ — The set and values to 5/- (3) in blocks or strips, all part o.g., mostly fine, some a little stuck-down . . . . . (49)	E £15 to £20
128	☒ — The set used on five registered envelopes, all with June 11, 1935 pmks. some blunt perms., otherwise fine . . . . . (12)	£19
129	○ — Another used set, fine but for a few small stain spots and a few blunt perms. . . . . (12)	£19
130	☆田 — 10/-, S.G. 111, a fine o.g. block of four . . . . . (4)	£36
131	○田 — Another block of four, used from bottom of sheet with imprint, has grease stain from pmks., a trifle soiled . . . . . (4)	£40
132	— The selection with values to 2/- (4), blocks, 1935 Silver Jubilee (6 sets), etc., mainly used, mixed condition . . . . . (110)	E £10
133	☆田 1950 set, S.G. 135-147, in fine mint blocks of four, from upper-right corners of sheets . . . . . (52)	£22
134	○田 — Another set in fine used blocks of four . . . . . (52)	£26
135	S The Collection including 1901-02 set, 1907(2 sets), 1907-09 to 10/- (2), 1912-20 to 10/- (2), 1921-26 script to 10/-, 1935 set, 1938-47 to 10/-, etc., all overprinted or perf. "SPECIMEN", all part o.g. some a little stuck-down; a few slightly gum toned, or stained, otherwise mostly fine . . . . . (102)	E £40 to £50
136	☆ The Collection of George VI and E.II issues, including 1938-47 to 10/- (5), 1950 set, 1953-59 to £1(2), etc., all part o.g., mostly fine . . . . . (215)	E £20 to £25



## CAYMAN ISLANDS (continued)

Lot No.		Cat. or Est. Value
137	○ <b>■</b> Cancellations: 1908-09 ½d., a block of six (2 x 3), bearing boxed "RURAL POST/COLLECTION/GRAND CAYMAN" cancellation, fine (6)	E £7 to £10
138	○ — East End: Five pieces bearing 1908-09 ½d. (pairs or two copies), Edward 1d., George V ½d. on separate pieces; West Bay, Edward 1d. pair, 2½d., George V 2d., Rural Post-Grand Cayman ½d. pair, poor to fine (11 items)	E £20 to £30
139	☒ — ditto, O.H.M.S. envelope without stamp and Postal Stationery 1d. envelope, both with the "EAST END" obliterations, fine (2 items)	E £10
140	☒ — West Bay: Postal Stationery 2½d. envelope, dated January 12 1913, with the "WEST BAY" cancellation, fine (1 item)	E £5
141	○ — The Collection a range of issues with 1912-20 to 10/-, and including Cayman Brac, Georgetown, West Bay, East End, Little Cayman, cancellations, also four Postal Stationery items, etc., many fine (82 items)	E £25 to £30
142	The Collection to 1950, including 1901-02, 1905-06 sets, 1907 ½d. on 1d., 1907-09 5/-, 1912-20 to 10/-, 1935 set, 1938-47 to 10/- (3), 1950 set, etc., all part o.g. except nine, mostly fine (108)	E £35 to £40
143	○ The used Collection of George VI and E.II issues, in green album, including 1938-47 to 10/- (11), 1950 10/- (2), 1953-59 to £1(4), in blocks, etc., all used, mostly fine (230)	E £20 to £25

## DOMINICA

144	☆ 1874 1d., 6d., 1/-, S.G. 1-3, all part o.g. or unused, 1d. a little soiled, others fine appearance (3)	£39.50
145	☆ 1882 "½" in red on half 1d., a part o.g. pair and 1883 ½d. in black on half 1d., an unsevered pair, part o.g. but creased through the centre (2)	£19
146	△ — "½" in red on half 1d., variety surcharge inverted, S.G. 11a, used on small piece fine. With "Royal" certificate (1933) (see photo-plate VI) (1)	£50
147	The selection of surcharges, comprising 1882 "½" in black on half 1d., "½" in red on half 1d. (pair and single), 1883 ½d. on black on half 1d. (2), 1886 ½d. on 6d. (3), 1d. on 1/- (3), also 1877-79 1d. lilac, bisected vertically (4), bisected diagonally used on piece, part o.g. and used, mixed condition (12 items)	E £7 to £10
148	○ 1887-88 1/- dull magenta, S.G. 26, used, a little creased, otherwise fine (1)	£38
149	The Collection of Queen issues, including Great Britain 6d. with "AO7" pmk., 1874 to 1/- (2), 1877-79 to 1/- (4), 1883-84 ½d. (3), 2½d. (3), 1886 to 4d., 1887-88 to 1/- (stained), 1d. bisected on small piece, etc., some forgeries, unused and used, mixed condition (76)	E £30 to £35
150	The Collection of Queen issues, including 1877-79 to 1/-, 1882 and 1883 bisects, 1887-88 to 1/-, part o.g. or unused except eighteen, mixed condition (31)	E £30 to £35
151	S The selection, including 1903 5/-, 1908-21 1/-, 2/6, 1921 set, all part o.g. or unused, mostly fine (14)	E £7
152	P 1903, two Die Proofs of the centre vignette of the lower values (Dominica from the sea) on glazed card, dated 11 and 12 MAR 02 and marked "BEFORE HARDENING" and "AFTER HARDENING" respectively, and inscribed in MS "Dominica Original die", fine (for one see photo-plate III) (2)	E £40 to £50
153	P — Five Die Proofs on glazed card, comprising the frames of the 6d., 1/-, 2/-, 2/6 and 5/- values, last dated "10 MAR 03" others dated "3 JUN 03" and all marked "BEFORE HARDENING", fine (for 5/- see photo-plate III) (5)	E £100 to £125
154	☆ — Set, S.G. 27-36, all part o.g., some slight gum creases, 2/6 a little stained on reverse, mostly fine (10)	£42
155	☆ — Set except 2d. and 1907-08 2d., S.G. 27, 28, 30-36, 39, all part o.g., some small stain spots, a few blunt perfs., otherwise fine (10)	£42
156	☆ — 5/- black and brown, S.G. 36, part o.g. (hinge remainders and some staining), centred slightly to top right, otherwise fine (1)	£32

## DOMINICA (continued)

Lot No.		Cat. or Est. Value
157 ☆	1907-08 set, S.G. 37-46, all part o.g., some slightly soiled or stained, otherwise fine (10)	£40
158 ☆	1908-21 set to 5/- with some shades, S.G. 47-54, all part o.g. and mostly fine (22)	E £7 to £10
159	The Collection issues from 1908 to 1935, including 1908-21 to 5/-, 1921 set, 1923-27 to 5/- (2), etc., all part o.g. except four, mostly fine (60)	E £15 to £20
160 S	1923-27 set, without change of colours, overprinted "SPECIMEN", part o.g., some stain spots, otherwise mostly fine (17)	E £9
161 ☆	— Set, S.G. 71-91, all part o.g., a few with faint gum wrinkles, otherwise fine (21)	£55
162 ☆	— Another set, all part o.g., a few have small stain spots, otherwise mostly fine (21)	£55
163 ☆	— £1 black and purple on red, S.G. 91, part o.g., centred slightly to left, fine (see photo-plate VI) (1)	£45
164	The Collection of issues to 1951, including a few Queen issues, 1903 to 2/6 1907-08 to 5/-, 1908-21 set, 1921 set, 1938-47 to 10/-, 1951 set, etc., all part o.g. except two, mostly fine (113)	E £30 to £35
165 ☆	The Collection, issues from 1903, including 1907-08 to 2/6, War Tax, 1921 to 2/6, 1923-27 to 5/-, 1938-47 to 10/-, 1951 and 1954 to \$2.40, etc., all part o.g., some a little stained (130)	E £25
166 ○	The used Collection, including 1903 to 2/-, 1907-08 to 5/-, 1938-47 to 10/-, 1951 and 1954 to \$2.40, etc., mixed condition (149)	E £15 to £20
167 ○	The Collection, including 1890 to 5/-, 1912-22 to 5/-, 1921-32 to 5/-, covers, pieces, etc., mixed condition (137)	E £15 to £20

## FALKLAND ISLANDS

168 Δ	1861-77, the two "franks", S.G. FR1, FR2, the former has rather heavy horizontal crease, otherwise fine (20)	E £10 to £15
169 Δ	— The circular red "frank", S.G. FR2, a scarce vertical pair, creased, otherwise fine (see photo-plate V) (2)	E £25 to £30
170 ☆	1878-79 set, S.G. 1-4, part o.g., all but 4d. have plain edge at bottom, 1d. has thinning at top, few blunt perms. (4)	£99
171 ○	— Another set used, all with small faults, including reperforations (4)	£68.50
172 ☆	— 1d. claret, S.G. 1, part o.g., centred to top-right, fine (1)	£25
173 ☆	— 4d. grey-black, S.G. 2, unused, centred slightly to lower-right, has a few perms. missing or short, otherwise fine (1)	£65
174 ☆□	— 6d. blue-green, S.G. 3, an o.g. block of six (3 x 2), from top-right corner of sheet, some perms. split and one defective, otherwise fine (6)	£30
175 ☆□	— 1/- bistre-brown, S.G. 4, an o.g. block of nine (3 x 3), from top of sheet, centred to lower-left, has a few perms. missing or short, otherwise fine (9)	£36

Is your Collection insured? If not, write for explanatory Leaflet/Proposal Form



## FALKLAND ISLANDS (continued)

Lot No.	1883-1902	Cat. or Est. Value
176 ☆	½d., the Collection in blocks, comprising a block of nine, one of six, and four of four, shades, all o.g. or part o.g., few small faults . . . . . (31)	£39.35
177 ○□	½d. blue-green, S.G.5, an exceedingly rare used block of eighteen (6 x 3), good condition . . . . . (18)	£49.50
178 ☆□	½d. deep yellow-green, S.G. 7, an o.g. block of thirty (10 x 3), from bottom of sheet with imprint, perms. split and reinforced, two stamps badly defective, otherwise fine . . . . . (30)	£52.50
179 ☒	½d. yellow-green, and 1d. orange-brown, S.G. 8, 14, tied by circular dated cancellations of 1902 to Postal Stationery 1d. envelope addressed to Berne, good condition (see photo-plate IV) (1 item)	E £25 to £30
180 ☒	½d. yellow-green, 1d. orange-brown, horizontal strip of three and a single, S.G. 8, 14, tied to Registered envelope addressed to the United States, the envelope travelled via London and bears full dated markings of 1903, good condition (see photo-plate IV) (1 item)	E £30 to £40
181 ☆	1d. dull claret, S.G. 9, part o.g., centred to upper-right, has corner perforated and three perms. stained at left, as usual gum wrinkled otherwise fine . . . . . (1)	£32
182 ☆田	The same in a rare o.g. block of four, centred slightly to left, crinkly gum, a trifle soiled, otherwise fine. With "Royal" certificate (1969) (see photo-plate V) . . . . . (4)	£128
183 ☆	1d. orange-red, S.G. 18, tied by smudgy dated cancellation of 1902 to envelope addressed to London, good condition (see photo-plate IV) . . . . . (1)	E £30 to £35
184 ☒	1d. orange, tied to envelope addressed to Thetford, and readdressed to Torquay and Dawlish, full dated markings of 1902, good condition (see photo-plate IV) . . . . . (1 item)	E £25 to £30
185 ☒	Cover to Dublin bearing 1883-1902 1d., tied by rather indistinct double-circle "FALKLAND ISLANDS" cancellation, backstamp "BLACK-ROCK DUBLIN/JA 18/02", stamp a little stained, cover creased and rather soiled . . . . . (1)	E £10
186 △	1d. red-brown, bisected diagonally, S.G. 10a, used on large part "front" with two whole copies tied by cork pmks., addressed to Eastbourne, rather smudgy pmk. of 1891, good condition (see photo-plate IV) (1 item)	E £15 to £20
187 △	1d. red-brown, a horizontal strip of three, left hand stamp bisected diagonally (plain edge at top and at right), on part front addressed to Croydon, dated "FALKLAND ISLANDS AU 3 1891", good condition. With B.P.A. certificate (1957) (see photo-plate IV) . . . . . (1 item)	E £15 to £20
188 ☒	Another copy bisected diagonally, used on Mourning envelope with a normal horizontal pair tied by cork cancellations, addressed to London, dated "FALKLAND ISLANDS SP 4 1891", fine (see photo-plate IV) . . . . . (1 item)	E £50 to £60
189 ☆□	1d. orange-red-brown, S.G. 11, a scarce mint block of six (2 x 3), fine . . . . . (6)	£25.50
190 ☆	1d., the Collection, comprising blocks of fifteen, and four (8), shades, all o.g. or part o.g., mostly fine . . . . . (47)	£87.10
191 ☆□	2d. reddish-purple, S.G. 19, a complete o.g. sheet of sixty, slight traces of staining, a few small gum creases, otherwise fine . . . . . (60)	£42
192 ☆	2d., a block of eight (4 x 2), from bottom of sheet with imprint, two blocks of four, and 2½d., two blocks of four, shades, all o.g. or part o.g., mostly fine . . . . . (24)	£15.60
193 ☆□	2½d. pale chalky ultramarine, S.G. 21, an o.g. sheet of sixty, has a few small faults and small portion of margin missing, otherwise fine . . . . . (60)	£126

## FALKLAND ISLANDS (continued)

Lot No.	1883-1902 (continued)	Cat. or Est. Value
194 ☆	2½d. Prussian blue, S.G. 23, a part o.g. horizontal pair, centred slightly to top, otherwise fine (see photo-plate V) (2)	£40
195 ☆	2½d. ultramarine, S.G. 24, a right-hand half-sheet of thirty, o.g., has small portion of margin missing, otherwise fine (30)	£16.50
196 ☆	4d., three singles and four blocks of four, shades, o.g. or part o.g., mostly fine (19)	£15.20
197 ☆	4d. olive-grey black, S.G. 26, a scarce o.g. block of twenty-four (4 x 6), has a few perfs. split and plain edge three sides, perfs. split horizontally and reinforced, otherwise fine (24)	£72
198 ☆	6d., two blocks of four, 9d., blocks of nine and four, 1/-, two blocks of four, shades, all o.g. or part o.g., mostly fine (29)	£37.30
199 ☆	The selection comprising ½d.(11, including corner block of four with wmk. inverted), 1d.(10), 2d.(2), 2½d.(4), 4d.(3), 6d.(2), 9d.(2), 1/-, 1885-91, 1d.(2), 1891 ½d. on half 1d. (surface scrapes), shades, etc., all part o.g. or unused, majority fine (38)	E £20 to £25
200 ○	The selection comprising ½d.(4), 1d.(6), 2d. 2½d.(3), 4d.(2), 6d.(2), 9d., 1/-, 1885-91 1d.(2), 4d., 1904 to 3/-, all used, many fine (35)	E £10
-----		
201 ☆	1885-91 1d., block of six (3 x 2), from lower-left corner of sheet, 4d., block of four and five singles, S.G. 35-37, part o.g. or unused, few small faults and three with plain edges, otherwise fine (15)	£91.50
202 △	— 1d. claret, bisected diagonally, S.G. 35a, on small piece with normal, tied by cork pmk., a little soiled, otherwise fine (1 item) <i>Sold "as-is"</i>	E £5 to £10
203 △	— Another, bisected diagonally, with normal horizontal pair, tied to small piece, plain edge at bottom, a little soiled, otherwise fine (1 item) <i>Sold "as-is"</i>	E £5 to £10
204 △	— Another, bisected diagonally and with normal horizontal pair, tied by "FI" cancellations to small piece, good condition (1 item) <i>Sold "as-is"</i>	E £7 to £10
205 △	— Another, tied to small piece by "FI" pmk., fine (1) <i>Sold "as-is"</i>	E £7 to £10
206 ☒	1891 ½d. on half 1d. claret, S.G. 38, an unsevered block of four (plain edge at bottom), and a single, tied to envelope addressed to London with part of address cut-out, dated marking of February, 1891 (see photo-plate IV) (1 item)	E £100 to £125
207 △	1891 ½d. on half 1d. claret, surcharge sideways, S.G. 38e, tied to small piece, has slight vertical crease, otherwise fine (see photo-plate V) (1)	E £15 to £20
208 ☆	— ½d. on half 1d. red-brown, S.G. 39, part o.g. and fine. With B.P.A. certificate (1966) (1)	£25
209 ☆	— Two part o.g. examples mounted to form an unsevered pair, fine (2)	£50
210 △	— A single tied to small piece and with 1883-1902 ½d., 1d., 2½d., has vertical crease not affecting the stamps, the surcharge has several blue crayon strokes, otherwise fine (1 item)	E £10 to £15
211 △	— Two examples tied to small piece by circular dated cancellations, fine (1 item)	E £10 to £15

Avoid disappointment. Mail your bids earlier.



## FALKLAND ISLANDS (continued)

Lot No.		Cat. or Est. Value
212 ☆田	1898 2/6 deep blue, S.G. 41, a fine o.g. block of four from bottom of sheet showing part imprint . . . . . (4)	£64
213 ☆	— 2/6, 5/-, part o.g., well centred, latter has small corner thinning, otherwise fine . . . . . (2)	£30
214 ☆田	— 5/- red, S.G. 42, an o.g. block of four from lower-left corner of sheet, has a few perfs. split and reinforced, few tiny traces of stain spots, otherwise fine . . . . . (4)	£56
215 ☆	The Collection of Queen issues, including 1878-79 1/- (block of four and three singles), 1883-1902 to 1/- (2), 1898 2/6 (2), 5/- (2, one of each overprinted "SPECIMEN"), etc., also four Edward VII values overprinted "SPECIMEN", all part o.g. or unused, mixed condition . . . . . (51)	E £30 to £35
216 ○	Various used Queen issues, including 1878-79 4d., 1883-1902 ½d. yellow-green, strip of six and a block of six tied to large piece, 1/-, vertical strip of three tied to small piece, 1898 2/6, 5/-, etc., many fine . . . . . (30)	E £25 to £30
217	The selection of Queen and Edward VII issues, including 1898 2/6, 5/-, 1904-12 to 3/-(2), 5/-, shades, etc., all part o.g. except two, mixed condition . . . . . (30)	E £30 to £35
1904-12		
218 ☆	Set with some shades, also 1906 1d. (single, block of 12 (4 x 3)), S.G. 43-58, 59, all part o.g., fair to fine . . . . . (28)	£35+
219 ☆	1d. dull coppery red, S.G. 48, part o.g., centred slightly to top-right, fine (see photo-plate V) . . . . . (1)	£10
220 ○	Three used examples, one has small tear at left . . . . . (3)	£21
221 ○	A used strip of three lightly pmkd., has a few perfs. missing or short, otherwise fine . . . . . (3)	£21
222 ☆	2d. reddish purple, S.G. 51 part o.g., centred to upper-left, has a few gum wrinkles and blunt perfs., otherwise fine (see photo-plate V) . . . . . (1)	£42
223 ☆田	The same in a fine large part o.g. block of four from right of sheet, a little gum creased (see photo-plate V) . . . . . (4)	£168
224 ☆	2½d. pale ultramarine, S.G. 52a, part o.g. and fine (see photo-plate V) . . . . . (1)	£30
225 ☆	2½d. deep blue, S.G. 53, part o.g., centred to left, otherwise fine (see photo-plate V) . . . . . (1)	£25
226 ☆田	3/- deep green, 5/- red, S.G. 57, 58, both in o.g. blocks of four, former from bottom of sheet, latter has one stamp with slight crease, small portion of black paper adhering to reverse and is a little soiled, otherwise fine . . . . . (8)	£124
227 ○	3/- deep green, block of four, 5/- red, horizontal pair, S.G. 57, 58, both used with circular dated pmks., former somewhat soiled, latter fine . . . . . (6)	£70
228 ☆	The Collection comprising ½d. (block of four and two blocks of fifteen), 1d. (three blocks of four), 1d. (block of six), 2½d. (block of four), 6d., 1/-, 3/- (blocks of four of each), and 1906 1d. (block of twenty), shades, all o.g. or part o.g., many fine . . . . . (88)	£45.50
229	The Selection, values to 5/-, also two others, part o.g. and used, many fine . . . . . (22)	E £15

## FALKLAND ISLANDS (continued)

Lot No.	1912-20	Cat. or Est. Value
230 ☆	2½d. milky blue, S.G. 73, part o.g. and fine (1)	£12
231 ☆回	3/- (block of eight (4 x 2), from top of sheet), 5/- red (block of four from lower-left corner of sheet), 5/- purple (block of six (3 x 2), from top-right corner of sheet), S.G. 81-83, o.g., few small faults, otherwise fine (18)	£45
232 ○	3/- to £1, S.G. 81-85, all used with portions of circular dated pmks., the £1 tied to small piece, fine (for £1 see photo-plate V) (5)	£80-
233 ☆田	10/- red on green S.G. 84, a fine o.g. block of four (4)	£72
234 ☆田	A similar lot but from bottom of sheet (4)	£72
235 ☆	£1 black on red, S.G. 85, a part o.g. copy centred slightly to top-right, a little gum creased, otherwise fine (see photo-plate V) (1)	£45
236 ☆田	The same value in a part o.g. block of four from left of sheet, paper adhering to reverse, a trifle gum creased, otherwise very fine (see photo-plate V) (4)	£180
237 ☆	The o.g. or part o.g. Selection, values to 10/-, with some in blocks of four, shades, etc., also 1918-20 War Stamp 1/- (block of six from left of sheet), many fine (63)	E £15
238 ○	The used selection with values to 3/- in blocks of four, 3/-, 5/- red (block of four and a single), 5/- purple, 10/-, etc., many very fine (56)	E £35
239 ☆	1918-20, War Stamp, ½d., 1d. horizontal pair, both from right of sheet and showing albino overprint in margin (3)	E £7
240 ☆	— ditto, 1d. pale scarlet, variety overprint double, one albino, S.G. 91b, unused, centred slightly to lower-left. With B.P.A. certificate (1959) stating "genuine, discoloured" (see photo-plate V) (1)	£40
241 ☆田	1921-29 set, S.G. 98-114, in o.g. blocks of four, mostly very fine (32)	£22
242	— The selection, including values to 3/- (single, strip of three and a block of four), many in blocks of four, shades, etc., o.g. and used, many fine (73)	E £10 to £15
243 ☆	1928, South Georgia Provisional 2½d. on 2d. purple, S.G. 115, part o.g., a trifle gum toned, otherwise fine (see photo-plate V) (1)	£140
244 △	— ditto, A used example tied to small piece by circular South Georgia pmk. of February, 1928, fine. With B.P.A. certificate (1960) (see photo-plate V) (1)	£160
245 S	1929-36 set, S.G. 116-126, perforated "SPECIMEN", part o.g. and fine (11)	Spec. £22
246 ☆	— Set, S.G. 116-126, part o.g., fine (11)	£45
247 ☆	— ½d. (5), 1d. (5), 2d. to 6d. (3), 1/- (2), 2/6 to £1, shades, S.G. 116-126, all part o.g., mostly fine (for £1 see photo-plate V) (22)	£45+
248 ○田	— Set in blocks of four with extra ½d., 1d., 2d., 2½d., 6d. and 1/- blocks, all neatly cancelled with circular dated pmks. of 1929 or 1936 (4d.) (for £1 see photo-plate V) (68)	£230
249 ☆	— £1 black on red S.G. 126, a fine o.g. horizontal pair from top left corner of sheet (see photo-plate V) (2)	£70
250	— Various, including values to 5/- in blocks of four, 10/-, horizontal pairs, etc., also a few others, mostly o.g. or part o.g., chiefly fine (90)	E £20



## FALKLAND ISLANDS (continued)

Lot No.	1933, Centenary	Cat. or Est. Value
251 S	Set, S.G. 127-138, perforated "SPECIMEN", part o.g. and fine (for £1 see photo-plate VI) . . . . . (12)	Spec. £60
252 ☆	Set to 5/-, S.G. 127-136, all part o.g. and fine (for 5/- see photo-plate VI) . . . . . (10)	£94.90
253 ☆	Another Set to 5/-, all part o.g., some faint gum creases or wrinkles, otherwise fine (for 5/- see photo-plate VI) . . . . . (10)	£94.90
254 ☆	Set, S.G. 127-138, all part o.g. 1d. and 4d. have small paper fibres adhering to reverse, 10/- has small gum crease, a few blunt perfs., otherwise fine (for £1 see photo-plate VI) . . . . . (12)	£275
255 ☆	Another Set, part o.g., a trifle gum toned, 2/6 and 5/- have small gum thinnings, otherwise fine (for £1 see photo-plate VI) . . . . . (12)	£275
256 ○	½d. (4) 1d. (4), 1½d. (2), 2d. (2), 3d. (3), 4d. (4), 6d. (3), 1/- (2), 2/6, S.G. 127-135, all used with portions of Port Stanley pmks., mostly on small pieces and fine . . . . . (25)	£39.25
257 △田	½d. to 4d., S.G. 127-132, in blocks of four from bottom of sheets with imprints, tied to pieces by circular Port Stanley cancellations of 1937, fine . . . . . (24)	£18.60
258 ☆	½d., 1½d., 3d., 4d., 6d. (2), 1/- (3), in blocks of four, and 1d., 2d., 2/6, in horizontal pairs, S.G. 123-135, all o.g. or part o.g. and marginal, all with imprints except on 1/- block, mostly fine . . . . . (42)	£85
259 ○田	½d. to 1/-, in blocks of four with Port Stanley cancellations, 6d. block of four on cover addressed to Norwich with Fox Bay pmk. of 1933, 2/6 tied to Registered cover by Port Stanley cancellation of 1936, addressed to Manchester, S.G. 127-135, mostly fine . . . . . (37)	£68.10
260 ☒	6d., 5/- black and yellow, and 10/-, S.G. 133, 136, 137, tied to separate local covers by Port Stanley pmks. of 1947, fine (for 5/- see photo-plate VI) . . . . . (3 items)	£148.75
261 △田	2/6 black and violet, S.G. 135, a block of four tied to small piece by Port Stanley pmks. of 1933, a little creased, otherwise fine . . . . . (1 item)	£26
262 ☆田	5/- black and yellow, S.G. 136, a block of four from bottom of sheet with almost complete imprint, mint, a trifle gum wrinkled, otherwise very fine (see photo-plate VI) . . . . . (4)	£320
263 △	5/- black and yellow, S.G. 136, tied with South Shetlands pmk. to piece, has small mark on surface, otherwise very fine. With B.P.A. certificate (1958) (see photo-plate VI) . . . . . (1)	£80
264 ☆	5/- black and yellow-orange, S.G. 136a, an o.g. copy from right of sheet, fine but for a few blunt perfs. (see photo-plate VI) . . . . . (1)	£170
265 △	The same shade, tied to small piece by portion of South Georgia cancellation, fine but for a few blunt perfs. With B.P.A. certificate (1959) (see photo-plate VI) . . . . . (1)	£100
266 ○	10/- black and chestnut, S.G. 137, a fine used example cancelled with light portion of South Georgia pmk. (see photo-plate VI) . . . . . (1)	£65
267 ○	£1 black and carmine, S.G. 138, a fine used example from bottom of sheet with Fox Bay cancellation of 1933 (see photo-plate VI) (1)	£190
-----		
268 ☆	The Collection of George V issues, including 1912-20, to £1, 1921-29 to 3/-, shades, etc., all part o.g., mostly fine . . . . . (53)	E £45
269 ○	The used Collection of George V issues, including 1912-20 to 10/-, 1929-32 to 5/-, 1933, Centenary to 2/6, shades, pmks., some on pieces, etc., mostly fine . . . . . (54)	E £25 to £30

Lot No.	FALKLAND ISLANDS (continued)	Cat. or Est. Value
270 ☆	The Collection of George V and George VI issues, including 1912-20 to 10/-, 1921-29 to 3/-, 1929-36 to 5/-, 1938-49 to £1, 1948 Silver Wedding set, 1952 set, Dependencies, etc., all part o.g., except one, mostly fine . . . . . (160)	E £25 to £30
271 ☆	1938-49 5/- indigo and yellow-brown, S.G. 161a, o.g. and fine. With B.P.A. certificate (1965) (see photo-plate VI) . . . . . (1)	£25
272 △	— A used example, tied to small piece with circular Port Stanley pmk. of 1945, fine (see photo-plate VI) . . . . . (1)	£48
273 ☆田	— The Collection, values to £1, mostly in marginal blocks of four, many with imprints, all o.g. or part o.g., chiefly fine . . . . . (84)	E £25
274 ☆田	1948, Silver Wedding £1 mauve, S.G. 167, an o.g. block of four, has a few perfs. missing or short, otherwise fine . . . . . (4)	£24
275 ☆田	1952 ½d. green, S.G. 172, a fine mint block of four from right of sheet, variety double perforations in margin. Scarce . . . . . (4)	E £7 to £10
276	The George VI Collection in green album, including 1938-49 to £1(2), 1948, Silver Wedding £1(2), 1952 to £1 (5, including a set on first day cover), etc., also a few others, part o.g. and used, many fine but some stuck-down . . . . . (135)	E £20
277 ☆田	Postage Due: 1912-20 1d. vermilion, an o.g. irregular block of twenty-five with portions of sheet margin at two places, each stamp initialled in MS "S.M" (a little creased, otherwise fine). Also an article entitled "FALKLAND ISLANDS The So-called Postage Due Stamps" by James Andrews. Rare . . . . . (25)	E £15 to £20
<i>See Grant page 123</i>		
278 ☆田	South Georgia: 1963-69 set of £1 ultramarine, S.G. 1-15, all in fine mint marginal blocks of four . . . . . (60)	£14.80
Cancellations, etc.		
279 ○	1883-1902 2½d. blue, pmkd. with scarce hand-cut "FI" in square bars pmk., fine . . . . . (1)	E £7 to £10
280 ○	1904-12 5/- red, horizontal pair cancelled with two impressions of the scarce violet circular "POST OFFICE/Crown/FALKLAND ISLANDS" pmk. (Andrews type 31), good condition (see photo-plate V) . . . . . (2)	E £15 to £20
281 △	1912-20 1d. vermilion, tied to small piece by portion of the violet oval "POST-ED ON BOARD" pmk., fine . . . . . (1)	E £5 to £10
282 △田	— ½d. and 1d., both in blocks of four on small pieces and cancelled with the scarce "H.M.C.S. "AFTERGLOW" 29 MAY 1925 POSTED ON BOARD" pmks., fine . . . . . (two items)	E £15 to £20
283 ○	West Falklands: 1883-1902 ½d., 1d., 2d., 2½d., 4d., 6d., 9d., 1/-, 1898 2/6, 5/-, all with portions of the "W.FALKLAND.W.ISLANDS" and date cancellations, mostly of 1900, good to fine . . . . . (10)	E £40 to £50
284 ☒	South Georgia: 1883-1902 ½d. yellow-green, a pair, with "South Georgia" handstamps beneath, tied to cover addressed to Liverpool by circular "SOUTH GEORGIA C FE 5 12" pmks., with boxed "Found at Liverpool without a cover" altered in MS to read "without contents" mark, and initialled. Rare (see photo-plate VII) . . . . . (1 cover)	E £100 to £125



## FALKLAND ISLANDS (continued)

Lot No.	Cancellations, etc. (continued)	Cat. or Est. Value
285	∞ German South Polar Expedition: 1911, "DEUTSCHLAND" pictorial card, addressed to Berlin and bearing the special red label, tied by "Polarschiff Deutschland Sud-Georgien Grytviken 10. Dezember 1911" cachet, also with 1906 1d., cancelled "SOUTH GEORGIA" (date indecipherable), fine and scarce (see photo Plate VII) (1 item)	E £100 to £125
286	Δ — 1933, Centenary ½d. to 5/-, S.G. 127-136, tied by circular South Georgia cancellations of 1933, on small pieces, the 1d. and 1½d. have blue crayon strokes in addition, otherwise fine, the 5/- from top-right corner of sheet (10)	£98.45
287	— Various, all except one on George V issues, including two covers; also a few Fox Bay and George V 1d., horizontal pair, tied to small piece by circular "NEW ISLAND C 3 NO 25 FALKLAND IS" cancellation, mostly fine (21 items)	E £10 to £15
288	Δ South Shetlands: George V 3/- and 5/- purple, both tied to small pieces by "SOUTH SHETLANDS C MR 8 29" cancellations, both a little off-centre and slightly stained, otherwise fine (2)	E £7 to £10
289	Δ — 1912-20 ½d. tied to small piece by the scarce oval Deception Island South Shetlands cancellation in violet, date indecipherable, fine (see photo-plate VII) (1)	E £10
290	Δ — 1918-20, War Stamp 1d. tied to small piece by the scarce oval "DECEPTION ISLAND 28 DEC 1921 SOUTH SHETLANDS" in violet cancellation, fine (see photo-plate VII) (1)	E £10 to £15
291	Δ — A similar lot (see photo-plate VII) (1)	E £10 to £15
292	∞ — 1918-20, War Stamp ½d. and 1d. tied to cover addressed to Port Stanley by the black oval "DECEPTION ISLAND 12 DEC 1918 SOUTH SHETLANDS" cancellation, good condition (see photo-plate VII) (1 cover)	E £25 to £30
293	∞ — 1929, Wilkins Antarctic Expedition, buff cover addressed to Port Stanley bearing George V ½d., horizontal pair, tied with clear violet "WILKINS ANTARCTIC EXPEDITION Deception Island" mark, circular "PORT STANLEY C 30 AP 29 FALKLAND ISLANDS" pmk. on reverse, very fine (see photo-plate VII) (1)	E £50 to £60
294	∞ — ditto, ditto, buff cover addressed to Port Stanley bearing George V 1d., tied with clear violet "WILKINS ANTARCTIC EXPEDITION Deception Island" mark, circular "PORT STANLEY C 30 AP 29 FALKLAND ISLANDS" pmk. on reverse, very fine (see photo-plate VII) (1)	E £50 to £60

END OF FIRST DAY'S SALE

# SECOND DAY OF SALE

## TUESDAY, MARCH 16th, 1971

AT ONE-THIRTY P.M. PRECISELY

### BRITISH AMERICA

(continued)

Lot No.		Cat. or Est. Value
295 ○ □	<b>GRENADA: 1863-71</b> 6d. dull rose-red, S.G. 8, a used irregular-shaped block of five, some perfs. damaged and small thinning. With "Royal" certificate (1970) . . . . . (5)	£125
296 ☆	— <b>1938-50</b> , perf. 12 10/- slate blue and carmine, S.G. 163c, large part o.g., a little gum creased, otherwise fine . . . . . (1)	£38
297	— <b>The Collection of issues from 1895 to 1951, including 1895-99 set, 1904-06 to 5/-, 1908-11 set, 1913-21 to 10/- (2), 1921-31 to 10/-, 1934-36 set, 1938-50 to 10/- (3), etc., all part o.g. except seven, mostly fine . . . . . (157)</b>	E £35 to £40

### JAMAICA

298 ☆	<b>1860-63</b> 1d. to 1/-, S.G. 1-6, all part o.g. or unused, some stained and stuck-down, poor to fair . . . . . (6)	£111
299 ☆	— <b>1d. (9, including block of four), 2d. (block of four) 6d. (three different shades), all part o.g. or unused, some a little stuck-down, fair to fine . . . . . (16)</b>	E £30 to £40
300 △	— <b>1d. blue, bisected diagonally (straight edge and some clipped perfs.) tied to piece with "SPANISH TOWN JU 12 69 JAMAICA" pmk., the piece is somewhat stained. With B.P.A. certificate (1952) . . . . . (1)</b>	E £10
301 ☆ 田	— <b>3d. green, S.G. 3, a large part o.g. block of four with wing margin at right, centred to lower left, one has small marks on surface, otherwise fine . . . . . (4)</b>	£40
302 ☆	— <b>4d. red-orange, S.G. 4a, a part o.g. horizontal pair, centred to lower left, some staining and blunt perfs. . . . . (2)</b>	£44
303 ☆ □	— <b>6d. dull lilac, S.G. 5, a part o.g. block of six, centred to lower right, a few black fibres on reverse and some clipped perfs. . . . . (6)</b>	£108
304 P	— <b>1/-, imperf., small margins all round, a little soiled . . . . . (1)</b>	E £7 to £10
305 ☆ 田	— <b>1/- yellow-brown, S.G. 6, a part o.g. block of four with wing margin at right, centred to left, some black fibres on reverse, otherwise fine (see photo-plate III) . . . . . (4)</b>	£140
306 P 田	<b>1870-83 ½d., 1d., 2d., 4d., 6d., 1/-, imperf. plate proofs on glazed, ungummed and unwatermarked paper in near issued colours, all in blocks of four from corners of sheets and overprinted "CANCELLED", slightly soiled or rubbed . . . . . (24)</b>	E £50



## JAMAICA (continued)

Lot No.		Cat. or Est. Value
307 ☆田	1870-83 ½d. (2 shades), 1d., 2d., 3d., 6d., 1/- (2 shades), 2/-, 5/-, all in part o.g. blocks of four, some a little toned or stained . . . . . (40)	£168
308 ☆回	— 2d. deep rose, S.G. 9a, a part o.g. block of nine (3×3) some horizontal creases and split perms. . . . . (9)	£63
309 P回	— 1/-, imperf plate-proof on un gummed and unwatermarked paper, a block of nine (3×3) from top-left corner of sheet, centre stamp showing the "\$" variety, the block is a trifle rubbed and has a few stain spots, otherwise fine (see photo-plate III) . . . . . (9)	E £50 to £75
310 ☆田	— 1/- dull-brown, a block off our, lower right-hand stamp the "\$" variety, S.G. 13a, part o.g., centred to lower left, some staining on reverse (see photo-plate III) . . . . . (4)	£91+
311 ☆田	1883-97 1d. blue, S.G. 17, a part o.g. block of four, well centred, some black fibres on reverse and one stamp a trifle soiled . . . . . (4)	£26
312 ☆回	— 2d. rose, S.G. 19, a part o.g. block of six (2×3), a little off-centre and somewhat toned on reverse . . . . . (6)	£84
313 ☆田	— The selection, comprising ½d. (2), 1d. (2, block of nine) 2d. grey (2), 3d. (2), 4d. (2), 6d. (2), 1/-, 2/- (2), 5/-, all in o.g. or part o.g. blocks of four, a few small faults, mostly fresh and fine . . . . . (73)	£97
314 ☆	1890 2½d. on 4d. red-brown, variety surcharge double, S.G. 30, part o.g., centred to lower-right, a trifle soiled at top, otherwise fine . . . . . (1)	£24
315 ☆回	— 2½d. on 4d., a part o.g. block of six (perms. severed) showing "PFNNY" and "K" for "Y" varieties, some black fibres on reverse . . . . . (6)	£21.35
316 ☆	1903-04 ½d. (block of nine), 1d. (strip of three), 2½d. (block of four), one of each the error "SER.ET" also ½d. (8), 1d. and 5d. (blocks of four, normals) and pair wmk. inverted, all part o.g., a few a little toned, mostly fine . . . . . (34)	E £5 to £10
317 ☆回	— 5d. grey and yellow, a block of nine (3×3) with sheet margin at left, centre stamp error "SER.ET", S.G. 36a, large part o.g., very fine apart from thin spot and a few black fibres adhering to reverse (see photo-plate III) . . . . . (9)	£142
318 ☆	1905-11 ½d. (strip of three, one the error "SER.ET") and ½d. to 5/- blocks of four (some shades missing). all part o.g., some a little stained . . . . . (35)	E £7 to £10
319 ☆	— 3d. olive-green (8), 3d. purple on yellow (12), 4d. red-brown (8), 4d. black on yellow (4), 4d. red on yellow (4), 6d. dull orange (8), 6d. lilac (8), 1/- black on green (8), 1/- brown (14), 2/- purple on blue (4), all part o.g. and in blocks, mostly fine . . . . . (74)	E £20 to £25
320 ☆田	— 1/- black on green, a large part o.g. block of four from top-left of sheet, lower-right-hand stamp the "\$" variety, S.G. 54a, hinge remainders in margins and faintly toned, fine (see photo-plate III) . . . . . (4)	£100+
321 P	1919-21 1½d., Die Proof in black on glazed card, 1mm. margins all round fine . . . . . (1)	E £10
322 P	— 1½d. 2d. (2), 3d., 4d., 1/-, 2/-, 3/-, 5/-, imperf. colour trials on un gummed paper, overprinted "SPECIMEN", mostly fine . . . . . (10)	E £5 to £10
323 P	— 2d., 2½d., 3d., 4d., 1/-, 2/-, 3/-, 5/-, 10/-, imperf. colour trials on un gummed paper, overprinted "SPECIMEN", except 2/-, mostly fine . . . . . (9)	E £5 to £10
324 P	— unissued Abolition of Slavery, 6d. green and violet, an imperf. colour trial, overprinted "SPECIMEN", fine (see photo-plate VI) . . . . . (1)	E £25 to £30
325 S	— ditto, 6d. carmine and slate-blue, on Script CA paper overprinted "SPECIMEN" vertically, part o.g., centred slightly to top, a trifle toned and few pieces of paper adhering to reverse (see photo-plate VI) . . . . . (1)	E £25 to £30
326 S	— ditto, another copy on Script CA paper, centred to right, toned (see photo-plate VI) . . . . . (1)	E £20 to £25

## JAMAICA (continued)

Lot No.		Cat. or Est. Value
327 P	1921-29 6d. plate proof in blue on wove paper of the centre vignette, fine (1)	E £3
328 P田	— The same in a block of four, has horizontal crease clear of design and a few stain spots, otherwise fine (4)	E £12
329 ☆	— 2/- light blue and brown, a vertical pair from bottom of sheet, variety imperf. between stamp and margin, part o.g. but toned (2)	E £5 to £10
330 ☆田	— 2/- light blue and brown, S.G. 100, a large part o.g. block of thirty, hinge remainders and some stain spots, one stamp has paper adhering to reverse (30)	£16.50
331 ☆田	— 5/- blue and pale dull orange, S.G. 102a, a large part o.g. block of four from lower right of sheet, a few blunt perfs. and a trifle toned (4)	£24
332	1923, Child Welfare, the Collection, including Specimen set, blocks, including nine 2½d. values, part o.g. and used, some stained (57)	E £7
333 ☆	1935, Silver Jubilee, the Collection, including perforated Specimen set, extra flagstaff varieties, blocks, etc., all part o.g., some toned or stained (55)	E £10
334 S	1938-52 ½d. to 10/-, all part o.g. and perforated "SPECIMEN", mostly fine (13)	Spec. £13
335 ☆	— The Collection, including blocks, shades, values to 10/- (17), £1 (4), all o.g. or part o.g., some a little toned (350)	E £20 to £25
336	1945 to 1969, the Collection, including 1945-46 to 10/- (5), Silver Wedding £1 (4), and later range of issues, Red Cross booklet, etc., unused and used, some a little stained (hundreds)	E £15
337	The Collection of issues to 1952, including a few Queen issues, 1912-20 to 5/- (2), 1919-21 to 10/-, 1921-29 to 10/-, 1938-52 to £1, etc., part o.g. and used, many fine (176)	E £25
338 ☆田	1956, 1d. black and emerald, an o.g. block of four from lower right of sheet, variety imperf. and Queens head misplaced to right, a little soiled on reverse (4)	E £7 to £10
339	— The Collection, including blocks, shades, values to 10/- (8), £1 (4), o.g. and used, some a little toned (407)	E £12 to £15
340 ☆	1960, Stamp Centenary 6d. carmine and olive-green, a mint pair from top left of sheet, the left hand stamp showing offset, the other with partial offset on reverse, fine (2)	E £5 to £10
341 ☆	1962, Independence 1/- yellow-green and blue, a mint copy from lower left of sheet, variety creased during printing resulting in blue frame partially omitted (1)	E £5
✓ 342 ☆	1964, 10/-, variety blue printing (name, etc.) omitted, unmounted mint and fine (see photo-plate VI) (1)	E £75
343 ☆	1968, Human Rights, the set of three prepared for use designs, comprising 3d., 1/- and 3/- values, unmounted mint and very fine. See note after S.G. 274 (for 3/- see photo-plate VI) (3)	E £60 to £70
344 ☆田	— ditto, the same three values in unmounted mint blocks of four from lower left corner of sheet (for 3/- see photo-plate III) (12)	E £225 to £250
345 ☆	1969, 5c. on 6d., variety blue printing (butterfly's wings) omitted, unmounted mint and fine with normal for comparison (2)	E £10
346 ☆田	Postal Fiscals: 1858 1/- rose, S.G. F7, a part o.g. block of four from left of sheet, some gum thins and a little stained (4)	£10
347 ☒	— 1892, Registered cover addressed to United States, bearing 1865-71 1d. rose (two pairs and single) tied by oval "JAMAICA JY 20 92" pmks., and 1d. rose (block of four) and New York arrival mark on reverse, a little stained otherwise fine (1 cover)	E £10
348	— The selection, including 1865-71 wmk. pineapple 1d., wmk. CC 1d. rose (block of four), 1855-74 no wmk. 3d. (block of four) wmk. CC 3d. (block of twelve), Officials, etc., unused and used, mixed condition (50)	E £10



## JAMAICA (continued)

Lot No.		Cat. or Est. Value
349 PS	Fiscal: A foolscap sheet wmkd. Crown "SO" and "GvR", headed "JAMAICA" and bearing impressions of embossed fiscal values 3d. to £100 (23 values) in blue, overprinted "JAMAICA" and "SPECIMEN", another sheet bearing only the 3d. value but showing the setting of the "JAMAICA" overprint. An interesting lot . . . . . (2 items)	E £15 to £20
350	The Collection, issues from 1870, including 1870-83 to 5/-, 1883-97 to 5/-, 1905-11 to 2/-, 1912-20 to 5/- (4), 1919-20 to 10/- (5) and overprinted "SPECIMEN", 1921-29 6d. (31), 10/- (4), 1938-52 to £1, War Stamps, covers, etc., unused and used, mixed condition . . . . . (511)	E £65 to £75

351 ☆	LEEWARD ISLANDS: 1897 5/- green and blue, S.G. 16, part o.g., one perf. thinned at bottom, a little soiled and slightly toned on reverse. With "Royal" certificate (1970) . . . . . (1)	£90
352 ☆	— 1921-32 10/-, £1, S.G. 79, 80, both part o.g., fine . . . . . (2)	£35
353 ○	— ditto, 10/-, £1, both with circular Dominica pmks., a few slight surface rubs, otherwise fine . . . . . (2)	£43+
354 ☆	— 1938-51 £1 brown purple and black on red S.G. 114, part o.g., fine (1)	£25
355 ☆	— ditto, Another copy, part o.g., centred slightly to lower-left, has a few black specks on surface, otherwise fine . . . . . (1)	£25
356 ☆	— The Collection, including 1890 set, 1902, 1905-08 1907-11 sets, 1912-22 to 5/- (3), 1921-32 to 5/-, 1938-51 to £1 (3), etc., all part o.g. mostly fine . . . . . (145)	E £25 to £30
357 ☆	MONTSERRAT: 1932, Tercentenary set, S.G. 84-93, all part o.g., 2½d. has pinhole, otherwise fine . . . . . (10)	£45
358 ☆	— The Collection of issues to 1951, including 1903 to 2/6, 1903-08 to 2/6, 1908-13 set, 1914 5/-, 1916-23 to 5/-, 1922-29 to 5/-, 1938-48 to £1, 1951 set, etc., all part o.g., mostly fine . . . . . (119)	E £35

## NEVIS

359 P	Reprinted proofs of the 1861 1d., 4d. (defaced Plate), 6d. and 1/- in black, in sheets of twelve; imperf. colour trials on thin card of the four values in green, violet-blue, orange-yellow and rose respectively . . . . . (8 items)	E £10 to £15
360 ☆	1861, greyish paper 1d., a reconstructed sheet of 12, including two pairs and strip of three (perfs. split), part o.g. or unused, good to fine . . . . . (12)	£36+
361 ☆	— ditto, 4d., a partly reconstructed sheet, part o.g. or unused, good to fine . . . . . (9)	£73+
362 ☆	— ditto, 1/-, a reconstructed sheet of 12, unused, good to fine . . . . . (12)	£168+
363	— The Collection, including part reconstructions of the 1d. and 6d. values, etc., some unused, poor to fine . . . . . (23)	E £20 to £25
364 ☆B	1866 1d. deep red, S.G. 10, a sheet of 12 without margins, large part o.g., a few perfs. short or damaged, left-hand vertical row slightly creased and a few tiny age stains at top, otherwise very fine . . . . . (12)	£36+
365	— 1d., an unused part reconstruction of ten, two used examples, 4d. unused and a used part reconstruction of seven, poor to fine . . . . . (20)	E £12 to £15





EX 4



6



13



27



7



8



22



33



34



21



17



18



40



64



45



46



47



EX 52



54



55



56



57



58



EX 73



EX 74



81



EX 75



82





87

88



90

93

94

95

92



102

103

104

EX 122



109

EX 118

EX 119

124



89

EX 121





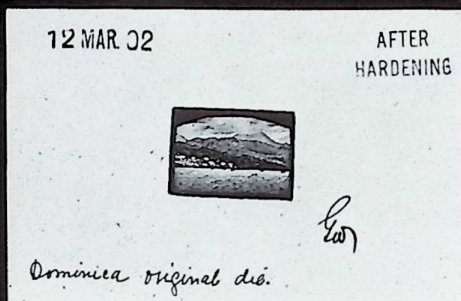
EX 60



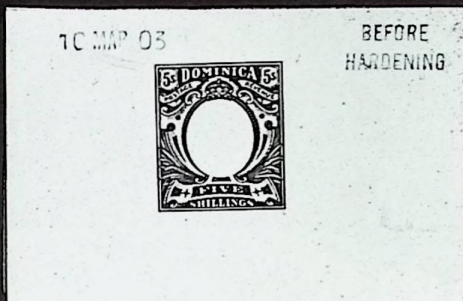
EX 61



EX 63



EX 152



EX 153



310



317



305



320



EX 344



385



309





179



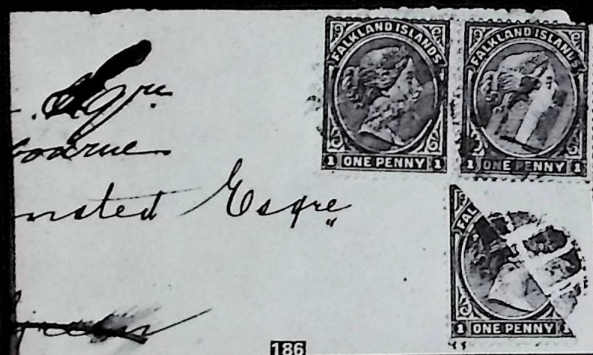
183



180



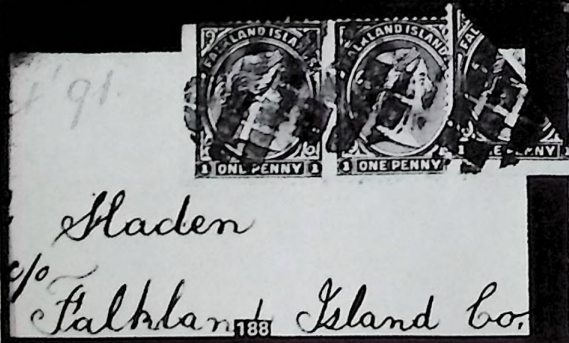
184



186



187



188



206





169



207



244



194



219



224



243



225



240



182



223



222



280



EX 247



235



236



EX 232



249

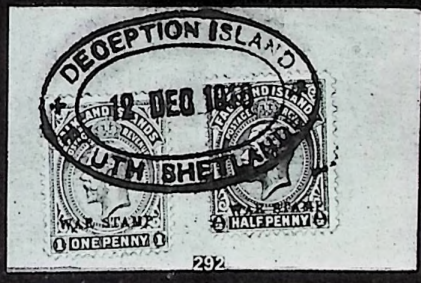
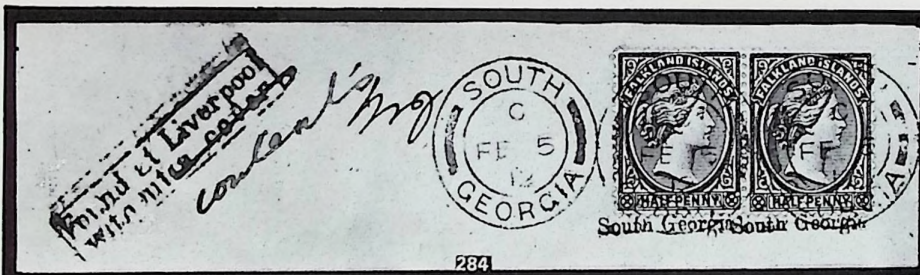


EX 248









Polarschiff Deutschland  
Süd-Georgien  
Grytviken  
10. Dezember 1911  
Mr. R. Neuberger,  
p. W. Benz & Co.  
Berlin





EX 371



369



374



375



376



381



378





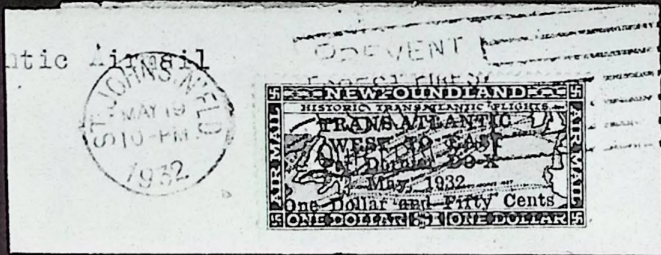
409



430



413



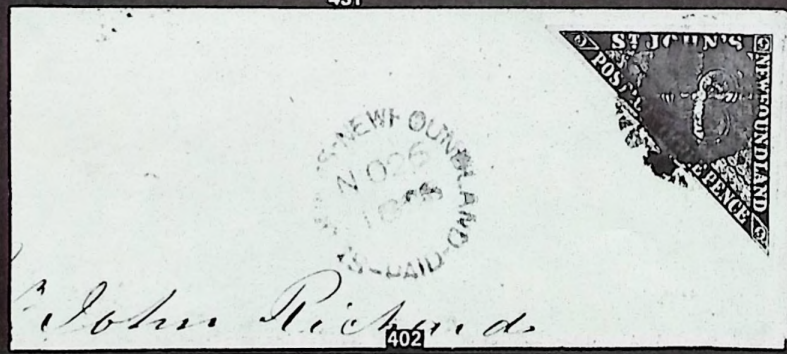
431



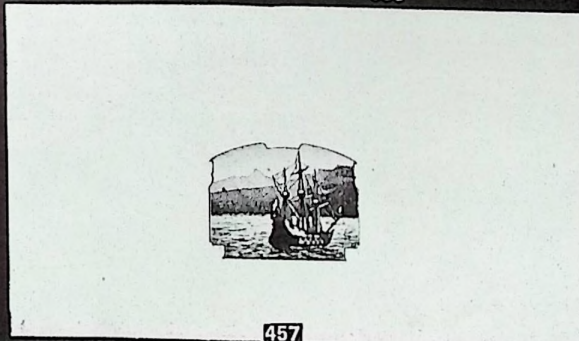
68



395



402



457

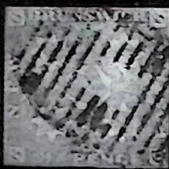




368



382



389



390



391



404



419



418



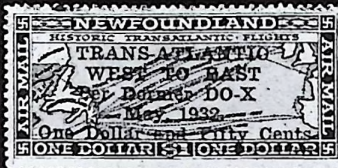
416



445



434



429



446



397



464



465



478



479



EX 458



459



EX 456

No... 6913  
 ST. LUCIA.  
 2d.  
 POSTAGE DUE

No... 6914  
 ST. LUCIA.  
 2d.  
 POSTAGE DUE



482



475



483



484



489

473





539



540



541



542



543



529



546



547

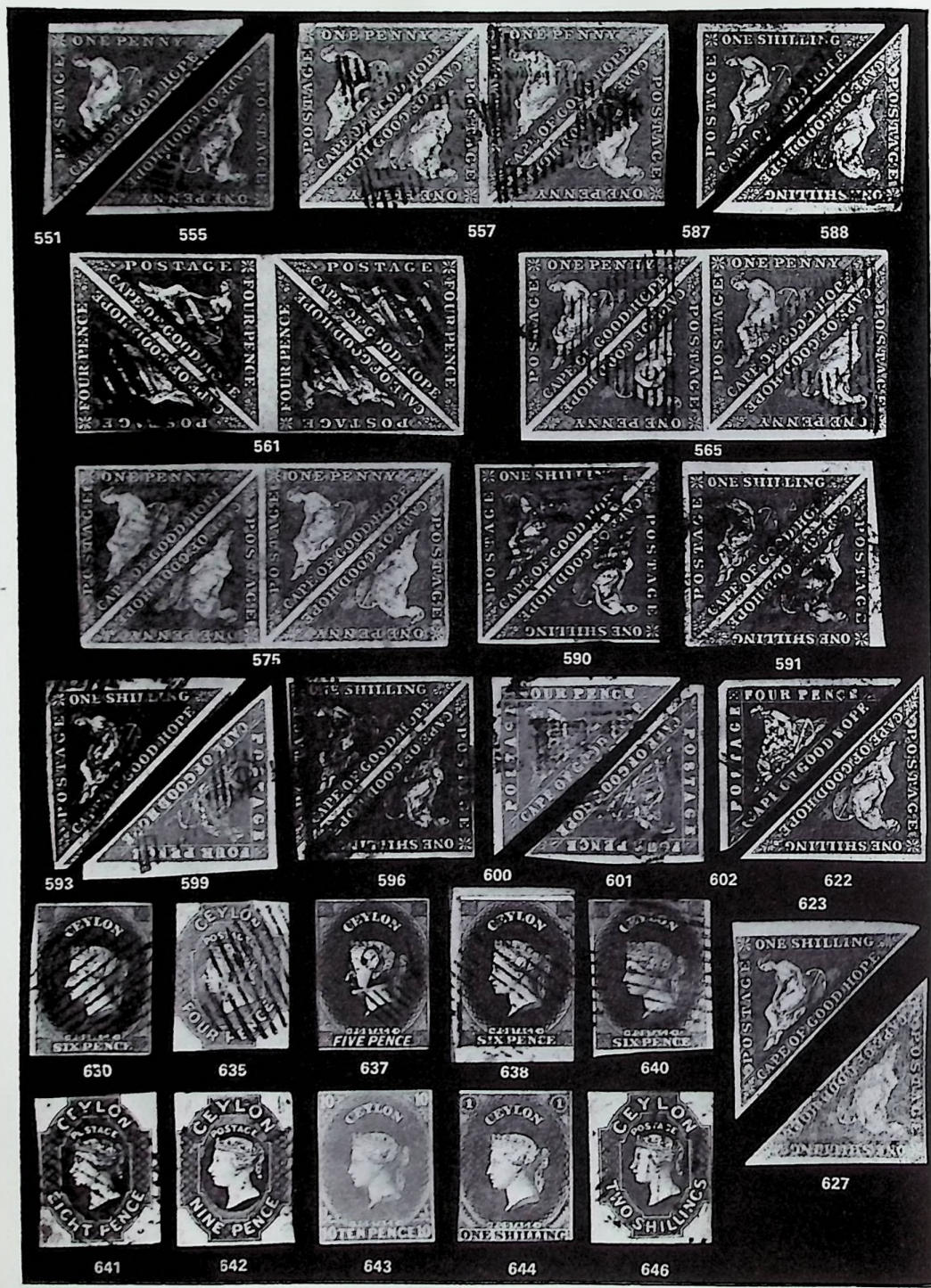


548



EX 549









658



EX 659



669



670



687



709



708



713



715



717



718



719



741



742



733



731



762



752









## NEVIS (continued)

Lot No.		Cat. or Est. Value
366 ☆田	1866 4d. orange, S.G. 11, an o.g. block of four from lower-right corner of sheet, a little creased and a few small age stains (mostly in margins), fine . . . . . (4)	£32
367 ○	— 1/- blue-green, a part reconstruction (no. 11 missing), all used, poor to fine . . . . . (11)	£55+
368 ☆	— 1/- yellow-green, S.G. 14, part o.g., from lower-left corner of sheet, centred slightly to top-right, has very slight diagonal gum bend, otherwise a very fine copy of fresh appearance (see photo-plate X) . . . . . (1)	£70
✓ 369 ☆田	— THE SAME IN A BLOCK OF NINE (3×3) FROM BOTTOM OF PANE, NO. 9 SHOWING THE CROSS ON HILL VARIETY. S.G. 14b, LARGE PART O.G., BRIGHT COLOUR AND VERY FINE (see photo-plate VIII) . . . . . (9)	£690+
370 ○	— 1/- yellow-green, a part reconstruction (nos. 1, 7, 9 missing), all used and mostly good to fine . . . . . (9)	£117
✓ 371 P田	1876 1d., TWO IMPERFORATE SHEETS, EACH CONSISTING OF FOUR PANES OF 12 AND SHOWING EIGHT DIFFERENT TRANSFERS. ONE IS IN A PALE RED, THE OTHER IN A SLIGHTLY BRIGHTER SHADE. A FEW AGE STAINS BUT VERY FINE. VERY RARE (for one pane see photo-plate VIII) . . . . . (2 items)	E £150 to £200
372 ☆	— 1d., ten sheets of twelve (some with margins or part of margins removed), from different transfers, one showing Nos. 1 and 3 retouches, two part sheets of 11 and one of 10, a range of shades and transfer varieties, all o.g. or part o.g., mostly fine but a few with slight faults. A most interesting study . . . . . (152)	E £100 to £150
373	— 1d. (4 unused, 2 used one the No. 1 retouch (not fine)), 4d. (part used reconstruction of 7), 1/-, shades, (2 pairs and 2 singles, part o.g. or unused), fair to fine . . . . . (19)	£82
374 ☆田	— 4d. orange-yellow, S.G. 18, an o.g. sheet of 12, a few faint gum bends and a little damaged in margin at left, fine (see photo-plate VIII) . . . . . (12)	£216+
375 ☆田	— Another fine o.g. sheet, from a different transfer (see photo-plate VIII) . . . . . (12)	£216+
✓ 376 P田	— 4d. orange-yellow, an imperforate sheet from transfer 3, a little soiled on reverse and a vertical crease through the centre row, otherwise fine. Rare (see photo-plate VIII) . . . . . (12)	E £50 to £75
377 ☆田	— 1/- pale green, two blocks of 6 forming a complete sheet (with only part sheet margins), No. 9 the Cross on Hill variety, S.G. 20, 20c., part o.g., the upper block fine, the lower block has a few short perfs., one stamp slightly thinned and a few small stains . . . . . (12)	£90+
378 ☆田	— 1/- deep green, S.G. 21, a part o.g. sheet of 12, a few small gum bends, a little soiled, mostly on margins (see photo-plate VIII) . . . . . (12)	£60+
379 ☆田	1878, perf. 11½ 1d., S.G. 22, two part o.g. sheets of 12 from different transfers, one fine, the other a trifle soiled and some perfs. split . . . . . (24)	£60+
✓ 380 ☆田	— 1d., a sheet of 12, the top horizontal row perf. 15, the other rows perf. 11½, o.g., a little creased at places but very rare . . . . . (12)	E £25 to £50
381 ☆田	— 1d., a sheet of 12, perf. 15 horizontally except at bottom and imperf. vertically, large part o.g., torn and rejoined through the third horizontal row and part of sheet margin missing, perfs. split between first two rows but a rare sheet. Apparently only two sheets known and both are torn (see photo-plate VIII) . . . . . (12)	E £75 to £100
382 P	1879, Die Proof in black on glazed card of the key type with value and name tablets blank, cut-down but with 1 mm. margins (see photo-plate X) . . . . . (1)	E £10



## NEVIS (continued)

Lot No.		Cat. or Est. Value
383 ☆	1879-80 1d., 2½d., 1882-90 ½d., 1d. (3 colours), 2½d. (both colours), 4d. grey, 6d. chestnut, 1/-, all o.g. or part o.g., mostly fine . . . . . (11)	£32.60
384	— And 1882-90, the small Collections, including shades and a few multiples, all part o.g. or unused except twenty-three, poor to fine . . . . . (48)	E £25 to £30
385 P	1882, Revenue 1d. lilac-mauve, affixed to card, handstamped "CANCELLED" and with a rule through value. Beneath is handpainted "ONE SHILLING" in frame, the card a little soiled dated "12 JUL 82", scarce (see photo-plate III) . . . . . (1)	E £20 to £30
386 ☆田	1882-90, 1/- pale violet, S.G. 34, a large part o.g. block of four from lower-right corner of sheet, a few small gum wrinkles and short perms. otherwise fine . . . . . (4)	£40
387 △	1883 ½d. in violet on half 1d. (pair, 3 singles), ½d. in black on half 1d. (pair, 2 singles), all used and on small pieces . . . . . (9)	£44
388	Postal Fiscal and Revenue: The Collections, including varieties, reconstruction or part sheet of the 1d., 4d. handstamped "Saint Christopher" (complete sheets), etc., part o.g. or unused except four, poor to fine . . . . . (53)	E £30
— — — — —		
389 O	NEW BRUNSWICK: 1851 6d. mustard yellow, S.G. 2b, lightly cancelled with small margins but close at lower right, fine but thinned. Cat. £300 With "Royal" certificate (1970) (see photo-plate X) . . . . . (1)	E £40 to £50
390 O	— ditto, 1/- dull mauve, S.G. 6, lightly cancelled, small even margins but thinned at two places. Cat. £550 (see photo-plate X) . . . . . (1)	E £40 to £50
391 △	— Another and 3d. dull red, both bisected and used on small piece, the 1/- touched at one side. With "Royal" certificate (1970) stating "genuine as far as one can say on small piece" (see photo-plate X) . . . . . (1 item)	E £100 to £200
392 O	— 1860-63, 2c., twenty-six used copies various shades, pmks., etc., mostly fine . . . . . (26)	E £15 to £20
393 O	— ditto, 5c. sap-green, S.G. 16, six used condition fair to fine . . . . . (6)	E £12 to £15
394 O	— ditto, 10c. red, S.G. 17, twenty-three used copies, various shades and pmks., fair to fine . . . . . (23)	E £15 to £20
395 ☒	— ditto, 12½c. indigo, S.G. 18, very fine used on buff envelope to England and well tied, backstamped "ST STEPHEN MY 23 1863", "MILTOWN MY 23 1863" and "BRADFORD YORKS JU 8 63". (see photo-plate IX) . . . . . (1)	E £20

## NEWFOUNDLAND

396 ☆	1857 3d. green, S.G. 3, a part o.g. copy with good to large margins all round, creased at left and very slightly stained at top. With "B.P.A." certificate (1946) . . . . . (1)	E £10
397 ☆	— 8d. scarlet-vermilion, S.G. 8, part o.g., large margins, a little wrinkled, very fine. With "Royal" Certificate (1968) (see photo-plate X) . . . . . (1)	E £15
398 ☆	— The same in a part o.g. pair with very large margins all round, very faint diagonal crease . . . . . (2)	E £20 to £25
399 ☆	1860 2d. orange-vermilion, S.G. 10, unused, small to good even margins, slightly soiled, with "Royal" Certificate (1963) . . . . . (1)	E £10
400 ☆田	— 3d. green, S.G. 11, a part o.g. block of four, one stamp just touched at top, small to large margins all sides, has two vertical creases . . . . . (4)	E £6
401 ☆田	— The same in a part o.g. block of eight, with small to large margins, has a few faint creases, otherwise fine . . . . . (8)	E £15

## NEWFOUNDLAND (continued)

Lot No.		Cat. or Est. Value
402	☒ 1860 3d. green, large margins and well tied to envelope to Harbour Grace, dated markings of November 1868, the cover slightly foxed, the stamp a little oxidised. With "Royal" certificate (1970) (see photo-plate IX) (1 cover)	E £125 to £150
403	☆☒ 1861, thin paper 6d. pale rose-lake, S.G. 23d, a mint sheet of twenty, a trifle soiled and with some creases, otherwise fine (20)	E £12
404	CAN. — 6½d. ROSE-LAKE, THE RARE "CANCELLED" OVERPRINT AT BOTTOM, MARGINS ALL SIDES AND FINE. WITH "ROYAL" CERTIFICATE (1946) (see photo-plate X) (1)	E £200 to £300
405	☒ 1866 5c., tied to cover addressed to Carbonear, with dated markings of 1866, stamp a little soiled and affixed close to corner of envelope (1)	E £15 to £20
406	☆☒ — 13c. orange-yellow, S.G. 29, a part o.g. block of four, centred slightly to right, a trifle gum wrinkled, otherwise fine (4)	£28
407	☆ — The Collection, comprising 2c. (7), 10c. (2), 12c. (block of four, three singles) 13c. (2), 24c. (block of four, pair, single), all part o.g. or unused and chiefly fine (25)	E £20
408	☆ 1897, Anniversary set, 1908 2c., S.G. 66-79, 94, all part o.g., some a little off-centre or have tiny gum thinnings, otherwise fine (15)	£16
409	☆☒ 1897 1c. ON 3c. GREY-PURPLE, A BLOCK OF FOUR, LOWER PAIR WITHOUT SURCHARGE, S.G. 80d., O.G., A LITTLE CREASED AND SOME PERFS. SPLIT. VERY RARE. WITH "ROYAL" CERTIFICATE (1970) (see photo-plate IX) (4)	£1,000
410	☆ 1910 perf. 12 set (only one 6c.), S.G. 95-100, 101-105 all part o.g., 5c. thinned, 9c. has surface scrapes, others mostly fine (11)	£15
411	☆☒ — ditto, 1c. green, a large part o.g. block of four, top-left stamp variety "NFWFOUNDLAND", S.G. 95a, fine (4)	£16+
412	P — 8c., an imperf. ungummed horizontal pair, from top of sheet, fine (2)	E £10 to £20
413	☆☒ — Perf. 12×14, a part o.g. block of four, variety imperf. between vertically, 106b, top-left corner has slight crease, otherwise fine (see photo-plate IX) (4)	£180
414	☆ — Perf. 12×11 1c., a part o.g. vertical pair from top of sheet, variety imperf. between, S.G. 109b., fine but for rather heavy crease. (2)	£55
415	☆ 1911, recess printed set, S.G. 111-116, all part o.g., mostly fine (6)	£24
416	☆ — ditto, 10c. purple-black, variety imperf., S.G. 114b, a very fine unmounted mint horizontal pair (see photo-plate X) (2)	£60
417	The Collection of issues to 1918, including 1857 1d. (2), 1861 1/-, 1866 to 24c., 1868-73 5c. black, 6c. on covers 1875 rouletted 5c. on cover, 1887 to 10c. (2), 1897 set, 1897-1918 to 5c., a few proofs and colour trials, etc., part o.g. and used, many fine (116)	E £35 to £40
418	±☆ 1919, Alcock \$1 on 15c., variety no comma, S.G. 143a, part o.g. and fine (see photo-plate X) (1)	£50
419	±☆ — ditto, Another copy variety no comma, part o.g., centred to lower-left, faint stain spot, otherwise fine (see photo-plate X) (1)	£50
420	±☆ 1921, Halifax wide spacing 35c., S.G. 148, part o.g., centred slightly to left, has small stain spot, otherwise fine (1)	£28
421	±☒ — ditto, ditto, another copy used on cover, slightly soiled, otherwise fine (1)	£22
422	±☒ — ditto, ditto, another example used on cover, has small violet ink mark, otherwise fine (1 item)	£22
423	±☆ — ditto, ditto, another copy, variety no stop after "1921", S.G. 148a, used on cover, a trifle soiled, otherwise fine (1 item)	£18
424	±☒ — ditto, ditto, 35c., variety no stop and "1" of "1921" below "f", S.G. 148b, used on cover, has a few blunt perfs., otherwise fine (1 item)	£38
425	±☆ — ditto, narrow spacing 35c., S.G. 148f, part o.g., centred slightly to left, fine (1)	£32



NEWFOUNDLAND (continued)		Cat. or Est. Value
Lot No.		
426 ☆	1923-24 2c., a horizontal pair variety imperf. S.G. 150a, part o.g. has small gum wrinkles in margin, fine from bottom of sheet . . . . . (1)	£35
427 ☆	1929-31 4c. reddish purple, variety imperf., S.G. 183a, a very fine unmounted mint horizontal pair . . . . . (2)	£20
428 ☆田	1931, re-engraved set, S.G. 198-208, in part o.g. blocks of four, 2c. creased, 6c. has thinning; also 1933 Humphrey Gilbert 20c, 24c., 32c. in part o.g. blocks of four. . . . . (56)	£65
429 †☆	1932, Do-X \$1.50 on \$1, S.G. 221, part o.g., centred slightly to upper-left, fine (see photo-plate X) . . . . . (1)	£70
430 †☆田	ditto, the same in a very fine o.g. block of four (see photo-plate IX) . . . . . (4)	£280
431 †田	ditto, a single copy, used on flown cover with usual pmks., has a few blunt and stained perms., otherwise fine (see photo-plate IX) (1 item)	£60
432 ☆	1932 3c. orange-brown, variety imperf., S.G. 211a, an unmounted mint horizontal pair, a little wrinkled, fine . . . . . (2)	£20
433 ☆	5c. maroon, variety imperf., S.G. 213a, a very fine unmounted mint horizontal pair . . . . . (2)	£25
434 ☆	30c. ultramarine, variety imperf., S.G. 220a, an unmounted mint horizontal pair, a little wrinkled, fine (see photo-plate X) . . . . . (2)	£45
435 ☆	1932-38 2c. green, variety imperf., S.G. 223a, a very fine unmounted mint horizontal pair . . . . . (2)	£12
436 ☆	1933, Humphrey Gilbert set, S.G. 236-249, all part o.g., fine . . . . . (14)	£11
437 ☆	ditto, 1c. (pair), 2c. and 4c. blocks of four and 24c. (pair), all imperf., S.G. 236a, 237a, 239a, 248a, all part o.g. fine but for a few gum wrinkles . . . . . (12)	£70
438 ☆	ditto, 24c. maroon, variety imperf., S.G. 248a, an unmounted mint horizontal pair, a little wrinkled, fine . . . . . (2)	£28
439 ○	1941-44, 7c. a lightly cancelled horizontal pair from lower-left of sheet, left-hand stamp without wmk., S.G. 281a., fine . . . . . (2)	E £10
440	Forgeries: The Collection, all Queen issues, including examples by Spiro, Panelli, etc., faked pmks., blocks, sheets, an interesting lot . . . . . (173)	E £50 to £75
441	The Collection of issues from 1910 in red "Oriol" album, including 1910 litho. set, perf. 12×11 1c. variety "NFWFOUNDLAND", perf. 12×11½ 2c., 1911 Coronation, 1919 Caribou, 1923-24, 1933 Humphrey Gilbert sets, etc., mainly part o.g. many fine . . . . . (213)	E £40 to £50
442 †	The Airmail Collection, in red "Oriol" album, including 1931 without wmk set, 1933 set, a few flown covers, etc., part o.g. and used, mostly fine . . . . . (24)	E £15
443	Various on Three stock-cards, including 1861 thin paper to 1/-, 1911 set with 15c. imperf. block of four, 1919 Caribou, 1933 Air, 1933 Humphrey Gilbert sets, etc., all part o.g. or unused, except one, mostly fine . . . . . (163)	E £35 to £40
444	Literature: "Postage Stamps and Postal History of Newfoundland" by Boggs, "Newfoundland Air Mails" by Dalwick and Harmer, fine . . . . . (2 books)	E £8

Lot No.		Cat. or Est. Value
445	○ <b>NOVA SCOTIA: 1851-57 6d. yellow-green, S.G. 5, lightly pmkd., with large margins, very fine but for faint corner crease (see photo-plate X) (1)</b>	E £20 to £25
446	○ — ditto, 1/- purple, showing portion of papermaker's wmk., S.G. 8a., good margins except at portion of one side (close but clear), lightly cancelled, fine but a little rubbed and has crease which has caused small tear Cat. £700. (see photo-plate X) (1)	E £75
447	R — 1890, Official Reprints of the 6d., 1/- (single and strip of three), fine (5)	E £7 to £10
448	○ — 1860-63, 12½c. black, thirty-two copies, including varieties three dashes of colour upper-left corner (4), defective ornament and partially defective ornament left corner, four of each (for details of these varieties see Jarrett pages 275, 276), pmks., shades and papers (32)	E £25 to £30
449	— The Collection, including poor copies of the 1851 1d., 3d. (2), 6d., "Cents" types with multiples and three entires (46)	E £15 to £20
450	— The selection, including 1851 1d. (unused, cut-into one side), 3d. (good margins all round but has scissor cuts), "Cents" types to 12½c. (2) (21)	E £10
451	☒ <b>PRINCE EDWARD ISLAND: 1867</b> cover addressed to Cobourg, bearing 1d. and 2d. values, cancelled by bar type pmks., the 1d. additionally tied by circular "PRINCE EDWARD ISLAND 21 DEC 1867" cancellation, the stamps affixed close to corner of envelope and a little damaged (1 cover)	E £10 to £15
452	☒ — Covers dated 1869 and 1870, each franked with 2d. values and with dated markings, the 1870 cover and stamp with stain spots (2 covers)	E £7 to £10
453	☒ — Cover to United States franked with partially severed pair 3d. (right-hand stamp reperfd. at right), dated April 1865, another cover to Nova Scotia franked with single 3d., dated markings of June 1866, a few small stains (2 covers)	E £10 to £15
454	☒ — 1870, cover to Cape Breton franked with a slightly off-centre 6d. yellow-green, a good range of dated markings of January 1870 (1 cover)	E £15
455	<b>ST. KITTS-NEVIS: 1903 and 1905-18</b> sets, War Tax 1916 ½d., 1918 1½d., S.G. 1-23, all used except one, mostly fine (28)	E £15
456	○ — 1920-22 set, S.G. 24-36, all used, mostly fine (for £1 see photo-plate X) (13)	£70
457	P — 1923, Tercentenary, Die Proof of the centre vignette in black on glazed card, a little soiled, otherwise fine (see photo-plate IX) (1)	E £15 to £20
458	○ — ditto, ditto, set, S.G. 48-60, ½d., 2d., 3d., 2/- with bar type cancellation, 3d. indistinct, others with circular dated pmks., mostly fine (for £1 see photo-plate X) (13)	£425
459	☆ — ditto, ditto, 5/-, S.G. 59, part o.g., centred slightly to right, a few blunt perms., otherwise fine (see photo-plate X) (1)	£35
460	☆ — 1950, Tercentenary set in o.g. or part o.g. corner pairs, one 1½d. showing error St. Edwards Crown, wmk. S.G. 86, 87, 87b., 88-91, some slight gum creases, otherwise fine (12)	E £20 to £30
461	— The Collection of issues to 1952, including 1903 to 5/-, 1920-22 to 10/-, 1921-29 to 5/-, 1923 Tercentenary to 2/6, 1938-48 to £1, 1952 set, etc., mainly part o.g., mostly fine (126)	E £25
462	○ — The Collection, issues from 1921, including 1921-29 to 5/-, 1938-48 to £1, 1952 and 1954-57 to \$4.80, 1963 to \$5. etc., all used, mostly fine (154)	E £16



## ST. LUCIA

Lot No.		Cat. or Est. Value
463	○ 1860 6d. green, S.G. 3, lightly cancelled centred to lower right, a little stained on reverse . . . . . (1)	£38
464	☆ 1863, Prepared for use 6d. on 4d., S.G. 10, part o.g., centred slightly to upper-left, some missing perms. and small stain, otherwise very fine. Rare (see photo-plate X) . . . . . (1)	£170
465	○ 1891-92, Die II ½d. on 3d., variety double surcharge, used, centred to lower-right, a trifle stained. With B.P.A. Certificate (1966) (see photo-plate X) . . . . . (1)	£95
466	The Collection of Queen issues to 1884, including 1860 to 6d. (2), 1863 to 6d., 1864 perf. 12½ to 1/- (3), perf. 14 to 1/- (2), 1882-84 to 1/-, Postage Fiscals, some unused poor to fine . . . . . (56)	E £50
467	☆ The Collection of Queen issues from 1882 to 1898, including 1882-86 to 1/-, 1891-98 to 10/-, surcharges, etc., all o.g. or part o.g., fair to fine . . . . . (25)	E £25 to £30
468	The selection of Queen issues from 1882, including 1882-86 to 6d., 1/- (used), 1891-98 to 10/-, etc., majority o.g. or part o.g. many fine . . . . . (25)	E £30
469	☆ 1902-03 set, 1902 2d., 1904-10 to 5/- (2) with most shades, S.G. 58-77, all part o.g., many fine . . . . . (23)	£24.75
470	☆ The Collection of issues from 1902 to 1951, including 1902-03 set, 1904-10 to 5/- (both colours), 1912-20 to 5/-, 1921-26 to 5/-, 1936 set, 1938-48 to £1, 1949-50 to \$4.80, etc., all part o.g., mostly fine . . . . . (146)	E £25
471	☆ 1916, War Tax 1d., variety overprint double, S.G. 89a, part o.g., centred slightly to upper-right, has blunt perf. at top, otherwise fine. With B.P.A. Certificate (1966) . . . . . (1)	£35
472	The Collection of George V issues, including 1912-20 to 5/-, 1921-26 to 5/-, 1936 set with perms. etc., all part o.g. except one, mostly fine . . . . . (82)	E £12
473	☆ Postage Due, 1931 2d. a vertical pair, variety imperf. between, S.G. D2b, lower stamp has small stain spot, otherwise fine (see photo-plate X) . . . . . (2)	£200

## ST. VINCENT

474	☆ 1863-68, perf. 11 to 12½ 4d., perf. 14 to 16 1/-, perf. 11 to 12½×14 to 16 1/-, S.G. 6, 9, 11, all part o.g. or unused, first has small black mark on surface, fair. . . . . (3)	£152
475	☆ — Perf. 11 to 12½×14 to 16 1/- slate grey, S.G. 11, part o.g., centred to left, straight edge at top and small stain spot, otherwise fine. (see photo-plate X) . . . . . (1)	£42
476	○ 1869 1/- indigo, 1/- brown, 1872 1/- deep rose-red, 1873-74 1/- lilac-rose, 1875 1/- claret, S.G. 13, 14, 17, 20, 21, all used, slightly off-centre, mostly a little oxidised . . . . . (5)	£188
477	○ — 1/- brown, S.G. 14, used, centred slightly to lower-left, fine . . . . . (1)	£25
478	☆ 1881 ½d. on half 6d., an unsevered pair, S.G. 33a, small part o.g., has a few stain spots and some missing perms. (see photo-plate X) . . . . . (1)	£50
479	☆ — 1d. on 6d. bright green, S.G. 34, part o.g., centred to top-left, one perf. short at top and a few faint stain spots on reverse. (see photo-plate X) . . . . . (1)	£55
480	☆ — Another copy, small part o.g., centred slightly to top-left, a trifle soiled on perms., fine . . . . . (1)	£55
481	☆ — Another, small part o.g., centred to left, has some missing perms. otherwise fine . . . . . (1)	£55
482	○ — 4d. on 1/- bright vermilion, S.G. 35, used, slightly soiled otherwise fine (see photo-plate X) . . . . . (1)	£140

## ST. VINCENT (continued)

Lot No.		Cat. or Est. Value
483 ☆	1883-84, 6d. bright green, S.G. 44, part o.g., has small paper flaw on reverse, otherwise fine. (see photo-plate X) . . . . . (1)	£45
484 ☆	— Another copy part o.g., centred slightly to lower-left, fine (see photo-plate X) . . . . . (1)	£45
485	The Collection of Queen issues, including 1863-68 to 1/- (3), 1869 4d. 1/- indigo, 1/- brown. 1872-75 6d. (2), 1881 (Dec.) 4d. (2), 1885-93 to 5/- (4), 1890-93 to 1/- (3), 1899 to 5/-, etc., majority part o.g. or unused, poor to fine . . . . . (90)	E £40 to £50
486 ○	The small selection of Queen issues, comprising 1863-68 1d., 6d. (2), 1869 4d., 1/- indigo, 1/- brown, 1871 6d. (3), 1876-78 1/- (pair), perf. 15, 6d. (pair), all used, some small faults, fair to fine . . . . . (13)	E £35 to £40
487 ☆	1902 set, 1904-11 to 5/-, S.G. 76-93, all part o.g., mostly fine . . . . . (16)	£26.30
488 P	1904-11 £1, Die proof of the country name and value tablet in black on glazed card, dated "12 APR 11" and marked "BEFORE HARDENING", fine . . . . . (1)	E £10
489 ☆	— £1, S.G. 93a, part o.g., centred slightly to lower-left, has small gum wrinkles, very slightly rubbed, otherwise fine (see photo-plate X) . . . . . (1)	£90
490	The Collection of issues, from 1907 to 1935 including 1907, 1909 sets, 1913-17 to 5/-, 1921-32 to 5/-, etc., all part o.g. except four, mostly fine . . . . . (65)	E £10
491 ☆	1913-17 £1 mauve and black, S.G. 120, part o.g. and fine . . . . . (1)	£28
492 ☆	— Another copy and 1921-32 £1, S.G. 120, 141, both part o.g., former has stain spot, latter fine . . . . . (2)	£58
493 ☆	1921-32 £1 mauve and black, S.G. 141, part o.g., centred slightly to right, fine . . . . . (1)	£30
494	The Collection of issues to 1951, including a few Queen issues, 1899 set, 1902 set, 1904-11 to 5/-, 1913-17 to 5/-, 1921-32 to 5/-, 1938-47, to £1, 1949-52 to \$4.80, etc., mainly part o.g., mostly fine . . . . . (146)	E £30 to £35
—————		
495 ○	TRINIDAD: 1860 1d. greyish blue, S.G. 19, lightly pmkd., small to large margins showing portion of adjoining stamp at bottom, very fine but for minute thin spot. . . . . (1)	E £12 to £15
496 ☆	— 1859, imperf. 4d. grey-lilac, S.G. 25, part o.g., large margins and fine (1)	E £6
497 ☆†	— ditto, ditto, another and 1/- indigo, S.G. 25, 29, both part o.g. with margins nearly all round, former has small black mark on surface, otherwise fine but both a trifle age stained . . . . . (2)	E £12
498 ☆	— ditto, ditto, 1/- indigo, S.G. 29, part o.g., large even margins all round and fine . . . . . (1)	E £6
499 ○	— 1859 (Sept.) pin-perf. 14, 4d. dull-lilac (thinned), 4d. dull-purple, 6d. yellow-green, S.G. 40, 41, 43, all lightly cancelled, perfs. at places, fair to fine. All with B.P.A. certificate. . . . . (3)	£38
500 P	— 1896, S.G. type 11, 1d. three Plate Proofs in black with "ONE PENNY" in different colours and another in dull purple with value in black . . . . . (4)	E £15
501	TRINIDAD AND TOBAGO: The Collection of issues to 1951, including 1913-23 to 5/- (2), 1921-22 set, 1922-28 to 5/-, 1935-37 to 72c., 1938-44 to \$4.80, etc., mainly part o.g., mostly fine . . . . . (103)	E £20 to £25
502	— The selection of E.II issues, including 1953-55 to \$4.80 (2, blocks of four), 1960-65 to \$4.80 (blocks of four), etc., all mint or o.g. except seven, mostly fine . . . . . (291)	E £30



Lot No.		Cat. or Est. Value
503	<b>TURKS AND CAICOS ISLANDS: The Collection of issues to 1950, including 1900 set, 1909 set, 1913-18 to 3/-, 1921 set, 1922-26 to 3/-, 1928 set, 1938-45 set, 1950 set, etc., all part o.g. except two, mostly fine . . . . . (135)</b>	E £30 to £35
504 ☆田	— 1955 5d., 8d., 1957 set, 1959 6d., 8d., 1960 £1, 1963 Freedom from Hunger 8d., 1963 Red Cross set, 1964 Shakespeare 8d., S.G. 235-257, all in mint marginal blocks of four, fine . . . . . (92)	E £10
505 P	<b>VIRGIN ISLANDS: 1922-28 Die Proof in black on glazed card, of the basic design (S.G. type 14) with value tablet blank, a trifle soiled . . . . . (1)</b>	E £7 to £10
506 ☆田	— 1956 set, 1962 set, 1963 Freedom from Hunger 25c., 1963 Red Cross, 1964 Shakespeare 10c., 1964 set, all in mint marginal blocks of four, fine . . . . . (176)	E £25
507	— The Collection of issues to 1952, including 1899 to 5/-, 1904 set, 1913-19 to 5/-, 1922-28 to 5/- (2), 1938-47 to £1, 1952 set, etc., part o.g. and used, mostly fine . . . . . (108)	E £35 to £40

**MISCELLANEOUS**

508 ☆	The Collection of George VI West Indian issues in green album, including Antigua; Barbados; Bermuda; British Guiana; British Honduras; Cayman Islands; Dominica; Falkland Islands; Grenada; Jamaica; Montserrat; St. Kitts-Nevis; St. Lucia; St. Vincent; Trinidad and Tobago; Turks and Caicos; Virgin Islands, also Canada and Newfoundland sets and part sets with values to £1, \$4.80, etc., part o.g., fair to fine . . . . . (hundreds)	E £100 to £125
509 ○	The used E.II West Indian Collection, including, Antigua; Bahamas; Bermuda; British Guiana; British Honduras; Cayman Islands; Falkland Islands; Jamaica; Montserrat 1953-58 \$4.80 (both types); St. Helena; Trinidad and Tobago; Virgin Islands etc., mostly fine . . . . . (hundreds)	E £60
510	The George VI Collection on leaves, including Antigua; British Guiana; British Honduras; Cayman Islands; Dominica; Jamaica; Montserrat; St. Kitts-Nevis; St. Lucia; St. Vincent; Turks and Caicos Islands; Virgin Islands, values to £1, perfs., shades etc., majority o.g. or part o.g., mostly very fine . . . . . (hundreds)	E £55 to £65
511	The Collection of West Indian Commonwealth in two albums and envelope, including British Guiana; British Honduras; Bermuda; Jamaica, sets and part sets values to \$5, blocks, etc., part o.g. and used, mixed condition . . . . . (hundreds)	E £25 to £30
512 ○	Various used West Indian Commonwealth, including Bermuda; Dominica; Guyana; Virgin Islands, etc., some minor varieties, mostly fine . . . . . (202)	E £15
513 ☆田	1958, British Caribbean Federation: The set in mint marginal blocks of four, fine . . . . . (120)	£8

**END OF SECOND DAY'S SALE**

## THIRD DAY OF SALE

WEDNESDAY, MARCH 17th, 1971

AT ONE-THIRTY P.M. PRECISELY

## BRITISH COMMONWEALTH

## COLLECTIONS AND VARIOUS

Lot No.		Est. Value
514	The Collection in red "New Ideal" album, issues to about 1936, including Antigua; Bahamas; Barbados with Britannia types; Bechuanaland; British Guiana 1899 to 96c.; British Honduras; Brunei; Canada 1852-57 3d.(3), large and small "Cents" types; Cape of Good Hope triangulars 1d. (4), 4d. (2), 6d. (3), 1/- (3); Cayman Islands; Ceylon with imperf. and perf. Pence types; Cyprus; Dominica; Falkland Islands; Gambia; Gibraltar; Gold Coast; Great Britain 1840 1d. black (4), 2d.; Grenada; India with 1854 4a.; Malaya; Malta first type ½d. (5); Newfoundland; New Zealand imperf. and perf. full face types; Papua; Rhodesia 1910-16 to 5/-; St. Helena; St. Lucia; Seychelles; South Africa; Tasmania; Virgin Islands 1888 4d. on 1/-; Zanzibar, etc., unused and used, some better items, fair to fine (hundreds)	E £300 to £350
515	The George VI Collection in red album, including Aden and States; Australia; Bahamas; Barbados; Bermuda; British Guiana; Burma; Canada; Cyprus; Dominica; Falkland Islands; Fiji; Gambia; Gibraltar; Great Britain; India; Malaya and States; Kenya; Leeward Islands; Malta; Mauritius; New Zealand; North Borneo; Northern Rhodesia; Nyasaland; Pitcairn Islands; St. Kitts Nevis; St. Lucia; St. Vincent; Sarawak; Seychelles; Sierra Leone; South Africa; Trinidad and Tobago; Virgin Islands; Zanzibar, etc., values to £1, \$4.80, part o.g. and used, some toned (hundreds)	E £200
516 ☆	The Collection of George VI African issues, in green album, including Ascension; Gambia; Gold Coast; Kenya; Mauritius; Nigeria; Northern Rhodesia; Nyasaland; St. Helena; Seychelles, Sierra Leone; Somaliland, Zanzibar, sets and part sets, values to £1, 10r., etc., all part o.g., mostly fine (hundreds)	E £75 to £80
517 ○	The used Collection of E.II African issues including Basutoland; Bechuanaland; Gambia; Kenya; Mauritius; Northern Rhodesia; Nyasaland; Rhodesia and Nyasaland; Seychelles; Sierra Leone; South Africa; Southern Cameroons; Swaziland; Tristan da Cunha; Zanzibar, etc., mostly fine (hundreds)	E £75
518 ☆	The Collection of George VI Asian issues, in green album, including Brunei; Burma; Ceylon; Hong Kong; India; North Borneo; Pakistan; Sarawak, sets and part sets with value to \$10, 10r., etc., all part o.g., many fine (hundreds)	E £50 to £75
519 ☆	The Collection of European George VI issues, including Cyprus: 1938-51 to £1, 1948 Silver Wedding £1; Gibraltar: 1938-51 to £1, 1948 Silver Wedding £1; Malta: 1938-43 to 10/-, 1948-53 to 10/-, 1949 Silver Wedding £1, etc., all part o.g., good to fine (121)	E £20



COLLECTIONS AND VARIOUS (continued)

Lot No.		Cat. or Est. Value
520	Various African, mainly E.II, including Basutoland 1961 1r. on 10/- (the three types); Bechuanaland; Nyasaland 1953-54 set (2); Rhodesia and Nyasaland; Seychelles; Sierra Leone; South Africa; Swaziland including 1961 1r. on 10/- Type III, including a few minor varieties, part o.g. and used, mixed condition (hundreds)	E £70
521 ☆	Various George VI Australasian issues, including British Solomon Islands; Cook Islands; Fiji; Gilbert and Ellis Islands; Niue; Pitcairn Islands; New Hebrides; Samoa, Commemoratives. sets and part sets, values to £1, part o.g., mostly fine (hundreds)	E £50
522 ☆	Various George VI issues, including Bahrain; British Occupation of Former Italian Colonies; Kuwait; Morocco Agencies; Muscat; sets and part sets with values to 10/-, 10/- on 10/-, 240 M.A.L. on 10/-, etc., all part o.g., good to fine (few hundreds)	E £40 to £45
523 ☒	The selection of African covers, mainly first day, including Basutoland 1961 to 1r. on 10/- (type I (2), type III, (4)), Bechuanaland, South Africa, etc., mostly fine (90)	E £10
524	Commemoratives: 1935, Silver Jubilee complete except for South Africa, 1937, Coronation almost complete set part o.g. and on cover, also 1946 Victory set, mixed condition (hundreds)	E £35
—————		
525 ☆	ADEN: 1937 set. S.G. 1-12, all part o.g., 10r. has paper fibres adhering to reverse, otherwise fine (12)	£55
526 ☆	— And States: The Collection including 1939-48 to 10r., 1951 to 10/- on 10r., States with values to 5r., all part o.g., mostly fine (89)	E £7 to £10
527 ☆	AUSTRALIA: 1913 set to 10/- with a few shades but without 2/-, S.G. 1-11, 13-14, all part o.g., few values with stained or blunt perms., otherwise mostly fine (16)	£88.25
528 ☆	— 1913-14 1d.(2), shades), 6d. S.G. 17, 19, all part o.g., one 1d. has missing perf. and gum crease, others fine (3)	£14.55
529 ○	— 1929-30 £2 black and rose, S.G. 114, used, has a few blunt perms., red ink mark on surface, a trifle stained (see photo-plate XI) (1)	£60
530	— The Collection of issues to 1932, including 1915 to 2/-, 1918-23 to 1/4(5), 1923-24 £1, 1926-30 to 1/4(2), 1931-36 to 10/-, etc., part o.g. and used, mixed condition (142)	E £30 to £35
531 ○	— 1932, Sydney Bridge 5/-, S.G. 143, a lightly cancelled copy, a few blunt perms., fine (1)	£30
532 ☆	— The Collection of issues from 1932 to 1952, including 1935 Silver Jubilee set, 1937-49, to £1(2), following issues, etc., all part o.g. except nine, mostly fine (172)	E £20 to £25
533 ☆	— The Collection of George VI issues on leaves, including 1937-49 to £1, 1948-56 to £2, 1946-47 B.C.O.F. set, Commemoratives, Postage Dues, etc., all part o.g., majority fine (119)	E £20 to £25

## BASUTOLAND

Lot No.		Cat. or Est. Value
534 ☆	The Collection of issues to 1952, including 1933 set, 1938 to 10/-(2), Commemoratives, etc., all o.g. or part o.g., mostly fine . (178)	E £10
535 ○	The used Collection of issues to 1952, including 1933 set, 1938 to 10/-, 1948 Silver Wedding 10/- (2), etc., mostly fine . (94)	E £12
536 ☆	1961, the set to 1r. on 10/- (types I and III) with 10c. type II (two pairs), most lower values with types in pairs, S.G. 58-68b, also Revenue 1r. on £5, 2r. on £1, all o.g. or part o.g., mostly fine . (42)	E £30 to £35
537 ○	— The set with some types to 1r. on 10/- (types I, III(3)), all used, mostly in pairs, chiefly fine . (39)	E £12 to £15
538	The E.II Collection in two albums and folder, including 1954 to 10/- (8), 1961 to 1r. on 10/-, a good range of Commemoratives in blocks, sheets, covers, also small stockbook with a range of mainly E.II issues, etc., part o.g. and used, mixed condition . (hundreds)	E £25 to £30
<b>OFFICIAL: 1934</b>		
539 ☆	½d (FROM TOP OF SHEET) has some blunt or missing perfs., 1d (HORIZONTAL PAIR), 2d. (HORIZONTAL PAIR FROM RIGHT OF SHEET) 6d. (FROM BOTTOM OF SHEET WITH PART IMPRINT), S.G. 01-04, all part o.g., a few gum wrinkles or slight gum creases, otherwise fine. Rare (see photo-plate XI) . (6)	£2,025
540 ○	½d., 1d., BOTH IN HORIZONTAL PAIRS used on separate covers, former with South Africa Official ½d. pair and 2d., 6d., BOTH TIED TO SMALL PIECES, all have some blunt or missing perfs. 1d. pair has slight grease stain, 6d. has small marks on surface, otherwise fine. Rare (see photo-plate XI) . (4 items)	£1,050
541 ☒	½d., A NEATLY CANCELLED BLOCK OF FOUR on cover addressed to Canada, centred slightly to top, some blunt or missing perfs., otherwise fine. Rare (see photo-plate XI) . (4)	£1,000
542 ☆	1d., a mint block of four, a few slightly blunt perfs, faint gum wrinkles, otherwise fine. Rare (see photo-plate XI) . (4)	£440
543 ☆	1d., uncancelled on unaddressed cover, centred slightly to right, a few blunt and stained perfs., otherwise fine (see photo-plate XI) . (1)	£110
—		
544 ☆	BECHUANALAND: 1885-86, wmk. Anchor ½d. grey-black, error "ritish", S.G. 4a, unused, slightly soiled. With "Royal" certificate (1970) (1)	£25
545 ○	— 1887 set to 10/-, S.G. 10-19, all used, some small faults, good to fine (10)	£33
546 ☆	— ditto, £1 lilac and black, S.G. 20, part o.g., centred slightly to left, has faint creases, otherwise fine (see photo-plate XI) . (1)	£120
547 ○	— ditto, £1 lilac and black, S.G. 20, circular dated cancellation, centred slightly to left, partial black off-set of an album illustration on reverse, otherwise fine. With "Royal" certificate (1970) (see photo-plate XI) . (1)	£150
548 ☆	— ditto, £5 lilac and black, S.G. 21, unused small stains, centred slightly to lower-right, with "Royal" certificate (1970) stating "... genuine, faded and regummed" (see photo-plate XI) (1)	£325
549 ☒	— 1961 1r. on 10/-, type 1, used on Registered first day cover with nine lower values, S.G. 157, 158, 160-167, fine (for 1r. on 10/- see photo-plate XI) . (10)	£87.65
550	— The Collection in maroon album, including 1887 2/6, 1888 to 1/- on 1/-, 1914-24 to 5/-, 1932 set, 1955-58 set, 1961 to 1r. on 10/- (type II 2nd printing), 1961 set in blocks of four, also a few Botswana, etc., majority o.g. or part o.g., many fine . (532)	E £40 to £45



CAPE OF GOOD HOPE

Lot No.	1853, Paper deeply blued	Est. Value
551 ○	1d. pale brick-red, S.G. 1, lightly cancelled, large margins, fine but for faint crease (see photo-plate XII) . . . . . (1)	E £8
552 ○	Another lightly cancelled copy, large margins, fine appearance but has tiny thinning . . . . . (1)	E £8
553 ○	1d. pale brick-red, a lightly cancelled pair, small to large margins, fine but for crease . . . . . (2)	E £12
554 ○ 田	<b>1. pale brick-red, a used block of four, large margins but creased</b> (4)	<b>E £20</b>
555 ○	1d. deep brick-red, S.G. 1a, a fine used copy with large margins (see photo-plate XII) . . . . . (1)	E £10
556 ○	A pair in an almost brown shade, large margins but creased and small thinning . . . . . (2)	E £12
557 ○ 田	<b>1d. deep brick-red, a used block of four with small to large margins nearly all round, a little stained, otherwise fine (see photo-plate XII)</b> . . . . . (4)	<b>E £20 to £25</b>
558 ○	4d., three used shades, one with sideways wmk., all with large margins . . . . . (3)	E £12 to £15
559 ○	4d., three lightly cancelled shades with large margins . . . . . (3)	E £15
560 ○	4d. deep blue, S.G. 2, a used pair with small to large margins, fine but for faint crease . . . . . (2)	E £10
561 ○ 田	<b>4d. deep blue, a block of four, oval bar type pmks., small to large margins practically all round (see photo-plate XII)</b> . . . . . (4)	<b>E £20 to £30</b>
562 ○	Paper slightly blued 1d. brick-red, S.G. 3, lightly cancelled, large margins, a trifle stained and faint corner crease, otherwise fine . . . . . (1)	E £8
563 ○	— Another used copy, good to large margins showing portion of adjoining stamp at one side, fine but for traces of thinning . . . . . (1)	E £6
564 ○	— 1d. brown-red, S.G. 3a, a used block of three, good to large margins, a little stained, otherwise fine . . . . . (3)	E £20 to £25
565 ○ 田	— <b>A block of four with wmk. sideways, lightly cancelled, large margins three sides, a little creased and one stamp with stain (see photo-plate XII)</b> . . . . . (4)	<b>E £25 to £30</b>
566 ○ 田	— 1d. brown-red, a block of five on almost white bleached paper, lightly cancelled, small to large margins nearly all round, creased at places, small tear and a little stained . . . . . (5)	E £25 to £30
567 ○	— 4d., three used shades with margins all round, one has a few small stains (3)	E £12
568 ○	— 4d. deep blue, S.G. 4, a used pair with good to large margins, a trifle creased . . . . . (2)	E £10

1855-58

569 ☆	1d. pale rose, S.G. 5a, unused, margins all round, large two sides. With "Royal" certificate (1970) . . . . . (1)	E £8
570 ○	1d. pale rose, a used copy with large margins all sides, fine but for faint crease . . . . . (1)	E £10
571 ☆	1d. deep rose-red, S.G. 5b, unused, large margins, slightly soiled. With "Royal" certificate (1970) . . . . . (1)	E £8
572 ○	1d. deep rose, wmk. sideways, lightly cancelled, large margins showing portion of adjoining stamp at bottom, fine but for corner crease . . . . . (1)	E £8
573 ○	1d., two used shades, large margins, one creased . . . . . (2)	E £12 to £15
574 ○	1d., two used shades with small to large margins, one a little creased at one corner . . . . . (2)	E £12 to £15
575 ○ 田	<b>1d. rose-red, a used block of four, small to large margins practically all round, a little rubbed and faintly creased (see photo-plate XII)</b> . . . . . (4)	<b>E £25 to £30</b>

## CAPE OF GOOD HOPE (continued)

Lot No.	1855-58 (continued)	Est. Value
576 ○	4d., four lightly cancelled shades, one with wmk. sideways, large margins, good appearance and mainly fine . . . . . (4)	E £12
577 ○	4d., four used shades, large margins, mainly fine . . . . . (4)	E £10
578 ○	4d., four used shades with margins all round and mainly fine . . . . . (4)	E £10
579 ○	4d., two used pairs with large margins, one slightly creased . . . . . (4)	E £12 to £15
580 ○	4d., two used pairs with large margins, one showing portions of two adjoining stamps, a little creased . . . . . (4)	E £12
581 ○ □	4d., a block of four and a triangular block of four, both used and with small to large margins nearly all round, slight creases and the triangular block has small tear . . . . . (8)	E £20
582 ☆	6d. slate-lilac, S.G. 7, unused, large margins, faint corner crease and slightly soiled. With "Royal" certificate (1970) . . . . . (1)	E £15 to £20
583 ☆	6d. pale rose-lilac, S.G. 7b, unused, margins all round, large two sides. With "Royal" certificate (1970) . . . . . (1)	E £10 to £15
584 ○	6d. rose-lilac, three used shades, good to large margins, two a little creased . . . . . (3)	E £15 to £20
585 ○	6d., four used shades, with margins all sides, good to fine . . . . . (4)	E £20 to £25
586 ○	6d., four used shades with margins all sides, good to fine, one thinned . . . . . (4)	E £20
587 ○	1/- bright yellow-green, S.G. 8, a used copy with good to large margins (see photo-plate XII) . . . . . (1)	E £10
588 ○	Another fine used copy with margins all sides (see photo-plate XII) . . . . . (1)	E £10
589 ○	Another used copy with good even margins, fine but for faint corner crease (1)	E £8
590 ○	The same in a used pair, margins three sides, but a little thinned and small stain on one margin (see photo-plate XII) . . . . . (2)	E £15 to £20
591 ○	Another used pair, large margins three sides but pmk. a little smudgy and and small tear (see photo-plate XII) . . . . . (2)	E £10 to £15
592 ○	1/- bright yellow-green and 1/- deep dark green, S.G. 8, 8a, both used and with good to large margins . . . . . (2)	E £15 to £20
593 ○	1/- deep dark green, S.G. 8a, large margins showing portion of adjoining stamp at bottom, fine but pmk. a little smudged (see photo-plate XII) (1)	E £15
594 ○	Another used copy with large margins, fine but for two stains caused by pmk. . . . . (1)	E £10 to £15
595 ○	Another, lightly cancelled, good margins, fine appearance but has small thinning . . . . . (1)	E £10
596 ○	The same in a used pair, margins three sides and part of other, but creased and pmk. a little heavy (see photo-plate XII) . . . . . (2)	E £20 to £25
—		
597 ○	1861, so-called "Woodblock" 1d. (2 shades) and 4d. pale grey-blue, all used, margins at places but creases and other faults (not repaired). Cat. £900 . . . . . (3)	E £40 to £50
598 ○	— ditto, 1d. (2 shades), 4d., all used and with large margins at places creases, thinnings, small tears, etc. . . . . (3)	E £40 to £50
599 ○	— ditto, 4d. pale milky blue, S.G. 14, lightly cancelled, large margins, fine appearance but creased, one heavy and splitting the paper. Cat. £275 (see photo-plate XII) . . . . . (1)	E £30 to £40
600 ○	— ditto, 4d. pale grey-blue, S.G. 14a, a used copy, large margins two sides, slightly cut-into at part of bottom, few tiny stain spots and a trifle creased, otherwise fine. Cat. £250 (see photo-plate XII) . . . . . (1)	E £30 to £40



CAPE OF GOOD HOPE (continued)

Lot No.		Est. Value
601 ○	1861, so-called "Woodblock" 4d. pale bright blue, S.G. 14b, lightly cancelled, large margins nearly all round, showing portion of adjoining stamp at lower-left, fine but for creases at lower corners. Cat £250 (see photo-plate XII) . . . . . (1)	E £30 to £40
602 ○	— ditto, 4d. deep bright blue, S.G. 14c., lightly cancelled and with two small pen-strokes, large margins at sides, cut-into at bottom, small thinning at bottom and a little creased. Cat. £700 (see photo-plate XII) . . . . . (1)	E £20 to £30
<b>1863-64, De La Rue</b>		
603 ☆	1d. deep carmine-red, S.G. 18, part o.g., good to large margins, fine (1)	E £8
604 ☆	Another part o.g. copy with good to large margins . . . . . (1)	E £8
605 ○	A used copy, margins all round, large two sides showing portion of adjoining stamp at left, close at part of bottom . . . . . (1)	E £6
606 ○	Another used copy with margins all round, fine but for slight crease . . . . . (1)	E £5
607 ○	1d. three used shades with margins all sides, one creased . . . . . (3)	E £12
608 ☆	1d. deep-carmine-red, a part o.g. horizontal pair with large margins . . . . . (2)	E £15 to £20
609 ○	1d. deep carmine-red, a used pair, touched at one corner, otherwise small to large margins all round . . . . . (2)	E £10
610 ☆	4d., two part o.g. shades, both with large margins, one a little stained and wrinkled . . . . . (2)	E £12
611 ☆	4d., two part o.g. shades with large margins, one a little creased but showing portion of adjoining stamp at bottom . . . . . (2)	E £12
612 ☆	4d., two part o.g. shades with margins all sides, one a little thinned . . . . . (2)	E £10
613 ☆	4d. pale blue, S.G. 19a, a part o.g. pair, margins all sides, a little wrinkled and a few faint stain spots . . . . . (2)	E £12 to £15
614 ○	4d., three used shades with margins all round, good to fine . . . . . (3)	E £12 to £15
615 ○	4d., three used shades with large margins, one a little thinned, others slightly creased . . . . . (3)	E £10
616 ○	4d. dark blue, a used pair with large margins . . . . . (2)	E £12
617 ○	4d., two used pairs, different shades, margins nearly all round . . . . . (4)	E £12 to £15
618 ☆	6d. bright mauve, S.G. 20, part o.g., large margins, fine . . . . . (1)	E £8
619 ○	6d. bright mauve, a used copy with margins all sides . . . . . (1)	E £8
620 ○	Another used copy with margins all round, faint crease . . . . . (1)	E £6
621 ○	Another used example, good margins all sides . . . . . (1)	E £6
622 ☆	1/- bright emerald-green, S.G. 21, part o.g., large margins a little creased and a few tiny stain spots, otherwise fine (see photo-plate XII) . . . . . (1)	E £20
623 ☆	Another copy, small part o.g., good to large margins (see photo-plate XII) (1)	E £15
624 ○	A used copy, margins all round, fine but for small stains . . . . . (1)	E £15
625 ○	Another used copy, large margins, but creased . . . . . (1)	E £12 to £15
626 ○	Another used example, small to good margins, fine but for crease . . . . . (1)	E £12 to £15
627 ☆	1/- pale emerald-green, S.G. 21a, part o.g., large margins, fine but for slight creases (see photo-plate XII) . . . . . (1)	E £30 to £35

## CEYLON

Lot No.		Cat. or Est. Value
628 P	1857 1d., Plate Proof in black, a block of six (2 x 3) from top of sheet, margins other sides, fine but for slight crease . . . . . (6)	E £6
629 P	— 6d., Plate Proof in black, a block of twelve (3 x 4), a little creased, a few tiny stains, margins nearly all round . . . . . (12)	E £10 to £15
630 O	1857, blued paper 6d. purple-brown, S.G. 1, a used copy with large margins, fine but for slight corner crease and a few tiny age stains (see photo-plate XII) . . . . . (1)	E £12 to £15
631 O	— ditto, another used copy, small to large margins, fine but for trace of thinning . . . . . (1)	E £10
632 O	1857-58, blue glazed paper, ½d. lilac, S.G. 3, a fine used copy with good to large margins . . . . . (1)	E £15
633 ☆	— White glazed paper, ½d. lilac, S.G. 4, a part o.g. horizontal pair, margins all round, left-hand stamp has tear, slight creasing and small thinning (2)	E £8
<b>1857-59</b>		
634 ☆	2d. deep green, S.G. 7, a part o.g. horizontal pair, large margins nearly all round, a little wrinkled and small thinning . . . . . (2)	E £10
635 O	4d. dull rose, S.G. 9, a used copy, slightly cut-into at left, small to large margins at other sides showing portion of adjoining stamp at right, a little thinned. Cat. £700 (see photo-plate XII) . . . . . (1)	E £30 to £35
636 O	5d. chestnut, S.G. 10, lightly cancelled and with large margins . . . . . (1)	E £12
637 O	Another copy, cancelled "124" (Aden), small margins nearly all round, fine but for small thinning (see photo-plate XII) . . . . . (1)	E £12 to £15
638 Δ	6d. purple-brown, S.G. 11, lightly cancelled and tied to small piece, good to large margins, fine (see photo-plate XII) . . . . . (1)	E £12 to £15
639 O	Another used copy, pmk. hardly perceptible, margins all round, fine . . . . . (1)	E £10
640 O	6d. brown, S.G. 12, lightly cancelled, good to large margins, a little rubbed or dry printing at lower-right, fine. Cat. £100 (see photo-plate XII) . . . . . (1)	E £20 to £25
641 O	8d. brown, S.G. 13, lightly cancelled, large margins two sides showing portion of adjoining stamp at right but a little thinned. Cat. £250 (see photo-plate XII) . . . . . (1)	E £20
642 O	9d. purple-brown, S.G. 14, lightly cancelled, small to large margins, four small pen-strokes in upper corners and razor split around frame at upper-right corner. Cat. £120 (see photo-plate XII) . . . . . (1)	E £10 to £15
643 ☆	10d. orange-vermilion, S.G. 15, unused, margins all sides, fine. Cat. £90 (see photo-plate XII) . . . . . (1)	E £15
644 ☆	1/- dull violet, S.G. 16, unused, slightly cut-into at bottom, good to large margins other sides. Rare. Cat. £750 (see photo-plate XII) . . . . . (1)	E £30 to £40
645 ☆	1/9 green, S.G. 17, unused, small margins three sides, a little cut-into and small thinning at top . . . . . (1)	E £12 to £15
646 O	2/- blue, S.G. 19, a used copy, small to large margins practically all round, tiny crease at top-left corner, otherwise fine. Cat. £225 (see photo-plate XII) . . . . . (1)	E £30 to £40
—		
647 O	1861, intermediate perf. 4d. dull rose, S.G. 34, lightly cancelled but centred to lower-right . . . . . (1)	£45
648 O	— A small selection of the wmk. Star issues with shades, different perfs. and values to 2/-, all used, fair to fine . . . . . (25)	E £25 to £30
649 O	1862, no wmk. 1d., 5d., 6d.(2), 9d., 1/-, all used, fair to fine . . . . . (6)	£54



## CEYLON (continued)

Lot No.		Cat. or Est. Value
650 ☆	1864, perf. 12½ 10d. orange-red, S.G. 67, two part o.g. examples, one with tear at top-right corner, other centres to lower-right . . . . . (2)	£52
651 ☆	1867 6d. deep brown, S.G. 104, a part o.g. block of eight (4 x 2), four small stains on reverse, otherwise very fine . . . . . (8)	£28+
652 ☆	— 9d. deep brown, S.G. 110, a part o.g. block of four, few perfs. damaged at left, otherwise very fine . . . . . (4)	£10+
653 ☆	— 1/- violet, S.G. 114, a part o.g. block of four, a little creased, otherwise very fine . . . . . (4)	£24+
654 ☆	— 2/-, three shades in fine part o.g. horizontal pairs . . . . . (6)	£48
655 ☆	The selection of "Pence" type, wmk. CC, all part o.g. or unused, including shades and values to 2/- (3), poor to fine . . . . . (37)	E £40 to £50
656 ○	The used selection of "Pence" type, wmk. CC, including shades, a few multiples, etc., poor to fine . . . . . (45)	E £20 to £30
657 ☆	1964-69 1r., an unmounted strip of three from right of sheet, variety imperf. between stamp and margin, and 1r. unmounted mint copy from bottom of sheet, variety brown printing omitted . . . . . (4)	E £10
—————		
658 ☆	COOK ISLANDS: 1967 \$2 on £1, S.G. 219, an unmounted mint horizontal strip of three from left of sheet, right hand stamp broken "O", faintly toned on reverse and some ragged perfs. otherwise fine (see photo-plate XIII) . . . . . (3)	£210 +
659 ☆	— ditto, \$2 ON £1, \$6 ON £3, \$10 ON £5, S.G. 219-221, ALL IN UNMOUNTED MINT BLOCKS OF FOUR, \$2 on £1 from left of sheet (some faint toning), \$6 on £3 from lower right of sheet, a few slight gum creases, others fine (for \$10 on £5 see photo-plate XIII) . . . . . (12)	£1,040
660 ☆	CYPRUS: 1882-92, Die II ½pi. to 12pi. with both 4pi, S.G. 35-41, all o.g. or part o.g., 1pi. has missing perf. at top, others mostly fine . . . . . (8)	£19.75
661 ☆	— 1912 set, with shades, S.G. 73-84, all part o.g., mostly fine . . . . . (15)	£20.70
662 ☆	— 1924-28 £1 purple and black on red, S.G. 102, part o.g., centred slightly to left, a little rubbed . . . . . (1)	£40
663 ☆	— ditto, Script CA ½pi. to 90pi. and 1925 set, S.G. 103-122, 90pi. has two small stain spots, some a little toned, mostly fine . . . . . (20)	£25
664 ☆	— 1928 set, S.G. 123-132, all part o.g., some a little toned but mostly fine (10)	£35
665 ☆	— 1934 and 1938-51, S.G. 133-143, 151-163, all part o.g., mostly fine (31)	£15
666 ☆	— 1955-60 set, S.G. 173-187, all unmounted mint and fine . . . . . (15)	£11
667 ☆	— 1960, Republic set, S.G. 188-202, all part o.g., fine . . . . . (15)	£40
668 ☆	GIBRALTAR: 1938-51 to £1 with a few perfs., and Leeward Islands 1938-51 to £1(3), with a few shades, all mint, mostly fine . . . . . (36)	E £10
GOLD COAST		
669 ☆	1875 1d. blue, S.G. 1, unused slightly stained or soiled, otherwise fine (see photo-plate XIII) . . . . . (1)	£50
670 ☆	— 4d. magenta, S.G. 2, part o.g., perfs. clipped at left, and faint stain spot (see photo-plate XIII) . . . . . (1)	£60
671 ☆	1889-94 5/-, S.G. 22, a mint block of four, from upper-left corner of sheet with Plate number, fine . . . . . (4)	£17
672 ☆	— 5/-, 10/- dull mauve and red, 20/- dull mauve and black on red, S.G. 22, 23, 25, all part o.g., last a trifle rubbed, otherwise fine . . . . . (3)	£32.25
673 S	— 20/- green and red, S.G. 24, overprinted "SPECIMEN", part o.g. and fine . . . . . (1)	E £25 to £30
674 ☆	— 20/- dull mauve and black on red, S.G. 25, part o.g., a trifle soiled on reverse, otherwise fine . . . . . (1)	£17

## GOLD COAST (continued)

Lot No.		Cat. or Est. Value
675 ☆	The Collection of Queen issues in green album, including 1875 4d., 1876-79 to 6d. (2), 1884 to 2/- (2), with ½d., 1d. in complete sheets of sixty, 1889 1d. on 6d. (3), 1898-1902 to 5/-, Controls, blocks, strips, etc., all part o.g. or unused, many fine . . . (318)	E £50 to £60
676 ○	The used Collection of Queen issues, including 1875 6d. (2) 1884-89 to 2/- (3), 1889-94 20/- dull mauve and black (3), 1898-1902 to 10/-, etc., covers mixed condition . . . (63)	E £25 to £30
677 ☆	1907-13 5/- green and red on yellow, S.G. 68, a large part o.g. horizontal pair from lower-left corner of sheet with Plate numbers, fine . . . (2)	£20
678 ☆	The Collection of Edward VII issues, including 1904-07 to 6d. (12), 1907-13 to 5/-, blocks, Controls, etc., all o.g. or part o.g., mostly fine . . . (176)	E £20
679 ☆田	1913-23 ½d. to 5/-, S.G. 70-82, with some shades, majority in o.g. or part o.g. blocks of four with Controls, some small creases and a few stain spots, otherwise fine . . . (60)	E £15 to £20
680 ☆	— The set to 20/- with most shades and dies, S.G. 70-84, all o.g. or part o.g., mostly fine . . . (26)	£29 +
681 ☆田	— 2/- purple and blue on blue, Die II, S.G. 80a, a mint block of four from upper-right corner of sheet with sheet number, fine (4)	£112
682 ☆田	— 5/-, Die II, S.G. 82d, a large part o.g. block of four from upper-right corner of sheet with sheet number, fine . . . (4)	£18
683 ☆	— 20/-, S.G. 84, o.g. from top of sheet with Plate number, fine (1)	£20
684 ☆	— Another copy, large part o.g. and fine . . . (1)	£20
685 ☆	— The same in a large part o.g. horizontal pair from lower-left corner of sheet with Plate number, has faint gum crease, otherwise fine (2)	£40
686	— The Collection, in green album, including a good range of values to 5/- (18), 10/- (3), 20/-, with 2/- Die II (2), shades, blocks strips, some Plate numbers, papers, also 1918 1d. on 1d. (24), a few Togo, etc., majority o.g. or part o.g., many fine . . . (over 400)	E £55 to £60
687 ☆	1921-25 15/- Die I, S.G. 100, a mint horizontal pair from upper-right corner of sheet with sheet number, has small stain spot, otherwise fine (see photo-plate XIII) . . . (2)	£90
688	The Collection of issues from 1921, in green album, including 1921-25 to 5/- (4), 1928 set, 1935 Silver Jubilee (blocks of four), 1938-41 to 10/- (2), Postage Dues, etc., majority o.g. or part o.g., many fine (over 400)	E £15 to £20
689 S	The Collection, including a few Queen issues, 1889-94 to 20/- (2), 1898-1902 to 10/-, 1907-13 to 5/-, 10/- (surface scrape), 1913-23 to 20/-, etc., all part o.g., and overprinted "SPECIMEN", some stain spots, otherwise mostly fine . . . (80)	E £15 to £20
690 ○	Postmarks and Cancellations: The Collection, in green album, including "CAPE COAST CASTLE AU 13 75" on 6d., "ELMINA PAID" cancellation, "ADJUAH 17 JU 96" with 96 in MS., similar pmks., Registered Seal cancels, a good range of issues, covers, also a range of Gold Coast used in Togo and some postal stationery, majority used, mixed condition . . . (hundreds)	E £15 to £20
691	<b>GREAT BRITAIN:</b> The Collection of George VI issues on leaves, including 1937-47 to 1/-, 1939-48 to £1, 1948 Silver Wedding £1, 1951 to £1, also a few Channel Islands, etc., all part o.g., mostly fine . . . (73)	E £20 to £25
692 ☆	<b>IRELAND:</b> 1922 (Feb.) 2/6 (2), 5/-, 10/-, S.G. 17-21, all part o.g. 10/- slightly gum toned, some blunt and missing perms., otherwise fine (4)	£60
693 ☆	— 1922 (Oct.-Dec.), 2/6, 5/-, S.G. 44, 45, part o.g., off-centre, 2/6 has gum crease, both with perms., blunt . . . (2)	£70
694 ☆	— 1922-23 2/6, 5/-, 10/-, S.G. 64-66, all part o.g., 5/- a trifle gum toned, a few blunt perms., otherwise fine . . . (3)	£39.75



Lot No.		Cat. or Est. Value
695 ☆	<b>IRELAND: 1925-28 wide and narrow date sets, S.G. 83-87, all part o.g., a few slight wrinkles, and blunt perms., otherwise fine . . . . . (6)</b>	£72
696 ☆	<b>— 1935 set, S.G. 99-101, all part o.g., all faintly gum toned, a few blunt perms., otherwise fine . . . . . (3)</b>	£100
697 ☆	<b>— The Collection of issues to 1950, including 1922 (Feb.) to 1/-, 1922 (June-Nov.) to 1/-, 1922-23 to 10/-, 1925-28 10/- (2), 1937 set, etc., all part o.g., mostly fine . . . . . (130)</b>	E £45
698 ☆田	<b>KENYA: 1938-40 50c. bright purple and black, an o.g. block of four, lower-left stamp variety rope not joined to sail, S.G. 144a, as usual gum toned . . . . . (4)</b>	£35 +
699 ☆国	<b>LESOTHO: 1966 1r. both wmk., in blocks of six and eight respectively, 1966 Postage Due 1c. and 5c. in blocks of twenty, one of each variety "LSEOTHO", S.G. 120Aa, 120Ba, D11a, D12a, all mint and fine . . . . . (54)</b>	£200
700 ☆	<b>— The Collection, including 1966 to 1r.(2), 1967 set in blocks of four Commemoratives in blocks, etc., all o.g. or part o.g., mostly fine (225)</b>	E £6
701 ☆	<b>MALAYA: Trengganu: 1924-38 \$5 green and red on yellow, S.G. 64, a mint pair from lower-left of sheet with control, slightly rubbed, otherwise fine . . . . . (2)</b>	£40
702 ☆	<b>— The Collection of George VI issues on leaves, including sets and part sets with values to \$5, Commemoratives, etc., part o.g. good to fine (hundreds)</b>	E £20 to £25
703 ☆	<b>— The selection of missing colours, including Johore; Pulan Pinang; Selangor; Sarawak, etc., and normal stamps for comparison, all o.g. or part o.g. . . . . (8)</b>	E £15 to £20
704	<b>MALTA: The Collection of Queen issues, including Great Britain used in Malta 2½d. on cover, 4d. on piece, first type ½d.(7). 1885 to 1/- (2), 1886 5/- 1899-1901 to 10/-, etc., part o.g. and used, mostly fine . . . . . (37)</b>	E £25
705 ☆	<b>— The selection of Edward issues, including 1903-04 to 1/- 1904-11 to 5/-, etc., all part o.g. and mostly fine . . . . . (38)</b>	E £12 to £15
706	<b>— The Collection, issues from 1914 to 1949, including 1914-22 to 5/-, 1914-15 4d.(2), 5d., 1919-20 2/6, 1922 Self Government Mult CA 2/6, 5/-, Script to 2/-, 1922-26 to 10/- £1 black and bright carmine, 1926 to 10/-, 1938-43 to 1/-, 1948-53 to 10/-, SilverWedding £1, etc., all o.g. or part o.g. except seven . (200)</b>	E £40 to £50
707 ☆	<b>— 1921-22 2/-, S.G. 103, part o.g., centred slightly to left, fine (1)</b>	£30
708 ☆	<b>— 1922, "SELF GOVERNMENT", wmk. CC 10/- blue-black, S.G. 105, mint from left of sheet, fine (see photo-plate XIII) . . . . . (1)</b>	£48
709 ☆	<b>— ditto, ditto, Mult CA 2/-, S.G. 111, part o.g., fine (see photo-plate XIII) . . . . . (1)</b>	£65
710 ☆	<b>— 1926-27 set, 1928 Air 6d., 1928 and 1930 set, S.G. 157-209, all part o.g., some shades, mostly fine . . . . . (70)</b>	£57 +
711 ☆国	<b>— 1960, Shipwreck, set, S.G. 295-300, all in mint or part o.g. blocks of four, fine . . . . . (24)</b>	£17
712	<b>— The Collection of E.II issues, including 1956-57 set, 1960 Shipwreck set, 1964 Independence set, 1965 to £1 and following range of issues to 1970 with first day covers, etc., part o.g. and used, mostly very fine . . . . . (hundreds)</b>	E £25 to £30

## MAURITIUS

Lot No.		Cat. or Est. Value
713 ○	1848 2d. blue, an early intermediate impression, concentric circles pmk., large margins torn irregularly, fine but for two small thinnings (see photo-plate XIII) . . . . . (1)	E £30 to £40
714 ☒	— Latest impression, 1d., a vertical strip of four, close at bottom-left side and the top stamp torn-into and damaged, otherwise good to large margins, well tied to letter wrapper to Bordeaux, dated markings of December 1859 and January 1860, the stamps a little oxidised at places and a little wrinkled (see photo-plate XIV) . . . . . (1 cover)	E £125 to £150
715 ○	1859, Sherwin 2d. deep blue, S.G. 30, concentric circles pmk., large margins and fine (see photo-plate XIII) . . . . . (1)	E £125 to £150
716 ○	— Dardenne 2d. pale blue, S.G. 34, showing "E" of paper-maker's wmk., large margins and fine used but for small thinning . . . . . (1)	E £15
717 ○	1854 4d. green, S.G. 35, a fine used copy with large margins (see photo-plate XIII) . . . . . (1)	E £20
718 ○	— Another used copy with large margins, a few small violet marks on surface and a little stained (see photo-plate XIII) . . . . . (1)	E £15
719 ○	1858-59 4d. green, S.G. 36, concentric circles cancellation, large margins, very fine (see photo-plate XIII) . . . . . (1)	E £15 to £20
720 ☒	— 4d. green, a vertical pair with large margins practically all round, tied to slightly damaged and stained envelope to Sydney, with dated markings of August and September, 1859, the stamps also with a few faint age stains and tiny crease at top-right corner (see photo-plate XIV) . . . . . (1 cover)	E £30 to £40
721 ☒	— 4d. green, a pair and a horizontal strip of three, large margins at places, and 1859 1/- vermilion, with margins all sides, well tied to envelope to Aden, unclear dated marking of 1859 on reverse, a little toned, a scarce cover (see photo-plate XIV) . . . . . (1 cover)	E £100 to £150
722 P	1859 1/-, reprinted Proof in black on card, 3mm. margins, fine . . . . . (1)	E £7 to £10
723 ☒	1859 1/- vermilion, a fine pair used on large cover to the same addressee at Aden with two slightly damaged copies of the 1860 4d. rose, "B53" cancellations, dated markings of January 1862 on reverse and red "8d" marking on front (see photo-plate XIV) . . . . . (1 cover)	E £30 to £50
724 ☒	— 1/- vermilion, a block of four with margins nearly all round, "B53" cancellations and used on a large envelope to Aden, dated markings of November 1861, the cover a little stained and with filing creases, one through two stamps causing a tiny tear (see photo-plate XIV) . . . . . (1 cover)	E £50 to £100
725 ☆	1862, intermediate perf. 1/- deep green, S.G. 47, unused, perms. cut at top. With "Royal" certificate (1970) . . . . . (1)	£170
726 ☒	1860-63 2d. blue, a vertical pair, tied by circular "PAID" cancellations to letter to Bordeaux (addressee's name cut-out), dated markings of July and August 1860 . . . . . (1 cover)	E £5 to £10
727 ☒	NATAL: 1857 3d. rose (20mm x 27mm), S.G. 4, tied to slightly stained cover to England, with blue circular dated pmk. and showing handstruck "6d.", Cape Packet and London arrival markings of December 1858 on reverse. With "Royal" certificate (1970) (see photo-plate XIV) . . . . . (1 cover)	E £20 to £25
728 ☆☆	NEW GUINEA: 1939 Air set, S.G. 212-225, all mint and fine but for usual gum wrinkles . . . . . (14)	£45



NEW ZEALAND

Lot No.		Cat. or Est. Value
729	The Collection of issues from 1915 to 1950, including a selection of George V types, 1926 3/- (2), 1935 to 3/- (2), 1936-43 to 3/- (3), Air-mails, Health issues, etc., mainly part o.g., mostly fine . . . (246)	E £25 to £30
730 ☆	1931-39 25/- greenish blue, S.G. 544q, part o.g., centred slightly to right, fine . . . (1)	£50
731 ☆	— 35/- orange-yellow, S.G. 544s, mint from right of sheet, a few perfs. a trifle creased, otherwise very fine (see photo-plate XIII) . . . (1)	£350
732 ☆	— £2 10s. red, S.G. 544u, part o.g., slightly off-centre, fine . . . (1)	£50
733 ☆	— £3 green, S.G. 544v, part o.g., fine (see photo-plate XIII) . . . (1)	£75
734 ☆	1931, Smiling Boy set, S.G. 546, 547, both part o.g. and fine . . . (2)	£26
735 ☆	1939-40 3/6 on 3/6 to 35/- on 35/- S.G. 545-545d, all o.g. or part o.g., fine . . . (5)	£63.25
736 ☆	1940-58 1/3 to £1, £2, £3, £4, £5, S.G. 634-646, 650, 652, 653a, 654, all o.g. or part o.g., mostly fine . . . (16)	£51.75
737 ☆	— 25/- greenish blue, S.G. 647, o.g., slightly off-centre, fine . . . (1)	£35
738 ☆	— 30/- brown, S.G. 648, mint and fine . . . (1)	£35
739 ☆	— Another copy, part o.g., centred slightly to right, fine . . . (1)	£35
740 ☆	— £2 10s., red, S.G. 651 part o.g., fine . . . (1)	£38
741 ☆	— £3 10s. rose, S.G. 653, part o.g., fine (see photo-plate XIII) . . . (1)	£225
742 ☆	— Another copy, large part o.g., centred slightly to right, fine (see photo-plate XIII) . . . (1)	£225
743 ☆	— 3/6 on 3/6 (type I) to 22/- on 22/-, S.G. 657, 658-660, all mint or o.g., fine . . . (4)	£45.25
744 ☆	— 3/6 on 3/6 (type I), 5/6 on 5/6, 11/- on 11/-, 22/- on 22/-, S.G. 657-660, all part o.g., otherwise fine . . . (4)	£54.25
745 ☆	The Collection of George VI issues on leaves, including 1940 to 1/-, 1940-58 to £3 with 25/- (has paper fibres adhering to reverse), 1946 to 1/-, Officials, etc., all part o.g., fair to fine . . . (157)	E £25
746 ☆	Niue: 1931 2/6 to £1, S.G. 51-54, all part o.g., fine . . . (4)	£40.50
747 ☆	— ditto, 2/6, 10/-, £1, S.G. 51, 53, 54, all part o.g., fine . . . (3)	£35
—————		
748 ☆	ST. HELENA: 1856 6d. blue, S.G. 1, a part o.g. pair, cut-into at right and a little at top-left, small to large margins other two sides, a little creased . . . (2)	£76
749 ☆	— 1882 1d.(3), 2d.(3), 3d. (3), 4d.(2), 1883 2d. (two horizontal pairs, one with straight edge at top), 1/- (2), all part o.g. . . . (17)	E £10
750 ☆	— The Collection of perf. Queen issues, including 1864-67 1d., 3d., 1/-, 1865-68 to 5/-, 1882, perf. 14 x 12½ 3d., 1871-73 1/-, 1873-75 6d. etc., all part o.g. or unused, fair to fine . . . (58)	E £25 to £30
751	— Various Queen issues, showing varieties, including without wmk. and wmk. inverted, 1884-94 issues with re-entries, blocks, etc., chiefly o.g. or part o.g., mostly fine . . . (85)	E £15 to £20
752 ○	— 1961, Tristan Relief Fund Set, S.G. 172-175, all fine used (see photo-plate XIII) . . . (4)	£475
753 ☒	— ditto, ditto, Another set, all tied by first day pmks. to cover, a trifle soiled, otherwise fine (see photo-plate XIV) . . . (4)	£475
754 ☆	SAMOA: 1945-48 30/-, £2, £3, £5, S.G. 212-214a, all part o.g., mostly fine . . . (4)	£172

Lot No.		Cat. or Est. Value
755 ☆	<b>SEYCHELLES:</b> The selection of Queen issues, including 1890-92 Die I to 96c., Die II to 16c., 1893 surcharges, 1897-1900 to 2r.25, 1901 and 1902 surcharges, etc., all part o.g., a few small faults . . . . . (43)	E £12 to £15
756 ☆	— <b>1903-04</b> set and surcharges, 1906 set, S.G. 46-70, all part o.g., mostly fine . . . . . (25)	£22.40
757	— The Collection, issues from 1912 to 1952, including 1912-13 to 2r.25, 1917-22 to 5r., 1921-32 to 2r.25, 1938-49 to 5r. with 1r. yellow-green, Silver Wedding 5r., 1952 to 10r., etc., all part o.g., except three, mostly fine . . . . . (132)	E £20
758 ☆	— The Collection, issues from 1954 to 1970, including 1954-57 to 10r., 1962-68 to 10r., etc., all mint or part o.g., mostly fine . . . . . (115)	E £7
759 ☆	<b>SIERRA LEONE: 1933 Wilberforce</b> set to 5/-, S.G. 168-180, all o.g. or part o.g., ½d. has faint staining, others fine . . . . . (11)	£40
760 ☆田	— <b>1956-61</b> set with additional 3d.(2), all in mint marginal blocks of four fine . . . . . (60)	£34 +
761 ☆	— <b>1961</b> set (2, all in blocks of four), 1963 to 11/- on 10/- (in pairs), etc., all mint or part o.g., fine . . . . . (176)	E £20
762 ○	— <b>1963 11s.</b> on £1 S.G. 269, used with Registered pmk., a little off-centre, fine (see photo-plate XIII) . . . . . (1)	£140
763 ☆田	<b>SINGAPORE:</b> The selection, including 1955 and 1959 sets, 1960 1961, 1962 and 1963 National Day sets, 1962-66 \$1, \$2, \$5, etc., all in mint marginal blocks of four, fine . . . . . (148)	E £7 to £10
764 ☆	<b>SOUTH AFRICA: 1927-28</b> sets, S.G. 34-39, in part o.g. horizontal pairs, centring varies, fine . . . . . (14)	£45
765	— The Collection, of issues to 1949, including 1913-21 to 10/-, 1925 Air set, 1930-45 to 2/6(two pairs), 1933-48 to 10/- (pair), later issues, etc., mainly part o.g., mostly fine . . . . . (260)	E £20 to £25
766	— Various modern issues in album, two folders, etc., including values to 1r. (8), blocks. majority o.g. or part o.g., many fine (few hundreds)	E £5 to £10
767 ☆田	<b>SWAZILAND:</b> The selection of E.II issues, including 1956 set, 1961 to 2r. on £1 (type I), 1961 to 2r., 1962 to 2r., etc., all in mint marginal blocks of four, fine . . . . . (244)	E £30
768 ☆	— The Collection, including 1933 set, 1938-54 to 10/- (2), 1956 set, 1961 to 2r. on £1 (the three types), 1961 set, 1962 set, Postage Dues, etc., all o.g. or part o.g., mostly fine . . . . . (341)	E £30
769 ☆	<b>TRISTAN DA CUNHA: 1952</b> set, S.G. 1-12, unmounted mint, fine . . . . . (12)	£21
770 ☆	— ditto, Another set, all in part o.g. marginal pairs, . . . . . (24)	£42
771	— The Collection, including a range of Great Britain values, some with violet rectangular and circular Expedition pmks., covers, 1937 Coronation cover, 1952, 1954, 1960, 1961 sets, etc., mint and used, mostly fine . . . . . (80)	E £25 to £30

END OF SALE



## LIST OF PRICES REALISED

Full List of Prices Realised will be available about a week after the completion of this Sale. As only a limited number will be printed, early notification is requested.

PRICE 4/- (20p)

Catalogue Subscribers receive Lists of Prices Realised immediately on publication. In most cases the Lists are enclosed with the newly published catalogue of a future Sale.

### CATALOGUE SUBSCRIPTION FOR TWELVE MONTHS

London Sales Catalogues .. .. .	£3.50
London Sales Catalogues covering only limited specialised interests (other than British Commonwealth) ..	£2

ALL POST FREE

## STAMPEX—1971

BRITAIN'S NATIONAL STAMP EXHIBITION

at the

ROYAL HORTICULTURAL SOCIETY'S

NEW HALL

Greycoat and Elverton Streets, Westminster

MARCH 1st to 6th

## TELEPHONE ANSWERING SERVICE

When our offices are closed a telephone recording service is in operation. You may 'phone any time of the day or night.

**PLEASE GIVE YOUR NAME AND ADDRESS BEFORE THE MESSAGE.**

If recording bids, please give:

- (i) Date of Sale;
- (ii) Lot Number(s), Country and bid(s) in that order.

Bids should be confirmed in writing.

**N.B.—The telephone will ring about five times before the machine "answers".**

# The Bond Street Stamp Auctions

## Programme of Sales

at 1.30 p.m. each day

- FEBRUARY 1, 2, 3 . . . BRITISH COMMONWEALTH, including a CAPE OF GOOD HOPE Collection offered by order of G. F. Watts, Esq., of Comberbach, Cheshire; CYPRUS offered by order of Lady Bignold, of Hove, Sussex; also useful groups of "Specimen" overprints, Bechuanaland. SECOND DAY comprises CEYLON, followed by Gold Coast, Grenada, Natal, etc.  
*Catalogue 8/- (40p.) or 12/- (60p.) with List of Prices Realised.*
- FEBRUARY 22, 23, 24 . . . SPECIALISED GREAT BRITAIN, including Collections offered by order of Mrs. Vernon Gattie, of Benenden, Kent, by order of the Executrix of the late T. Millyard, Esq., of Newton Abbot, Devon, formed by the late H. A. Backshell, Esq., and offered by order of Mrs. B. Sansbury, of London, S.W., by order of S. Williamson, Esq., of Canterbury, Kent, by order of the Executors of the late J. A. Gouge, Esq., of Ryde, Isle of Wight, and other important properties, with Postal History, nearly 200 lots of 1840 1d. and 2d., etc., 1867-83 (S.G. 130 o.g. block of four, etc.), 1883-84 (S.G. 133 o.g. block of 20, etc.), Collections of Queen issues, London-Windsor air cards, "Seahorses", later issues with EII Commemoratives in sheets, "missing colours", a fine range of Collections offered en bloc, Postage Dues, Officials and Used Abroad.  
*Art Catalogue 10/- (50p.) or 14/- (70p.) with List of Prices Realised.*
- MARCH 8, 9, 10 . . . GENERAL SALE, comprising fine British Commonwealth and Foreign and including the "Professor P. D. Ritchie", the "Major G. S. Burton", the "Mrs. Vernon Gattie", the "T. Millyard" Collections with selected properties of other owners. Sale opens with an extensive range (over 100 lots) of Collections offered *en bloc*. Interesting "country" groups follow, including Australia, Austria, Brunei, Canada, CAPE OF GOOD HOPE, Cyprus, Egypt, Finland, FRANCE and Colonies (nearly 60 lots), Germany, Great Britain, Liberia, Newfoundland, SARAWAK, Sweden, Switzerland, UNITED STATES, etc.  
*Catalogue (8 photo-plates) 6/- (30p.) or 10/- (50p.) with List of Prices Realised.*
- MARCH 15, 16, 17 . . . Catalogue herewith.
- MARCH 29, 30, 31 . . . GENERAL SALE, including the "G. C. Mott", "Alan Preston" and "Ernest C. Russell" Collections with Collections and Various, Canada, FRANCE and Colonies, Germany, Greece, Netherlands, NORWAY, PORTUGAL, SWEDEN, Russia, UNITED STATES, etc.

APRIL 5 . . . . .

**MALTA**

NOTE: Because of the postal strike, sale dates are subject to alteration.

Twelve months' Subscription for all London Catalogues and Lists of Prices Realised £3.10s. (£3.50) post free.





SALES 3700-3702

(14)

PRICE 20p

LOT 182



£140

LIST OF

## Prices Realised

AT THE SALE OF

# BRITISH AMERICA and BRITISH COMMONWEALTH

Originally scheduled for March 15th, 16th and 17th

BUT HELD ON

**APRIL 5th and 6th, 1971**

BY

## H. R. HARMER LTD.

*The International Stamp Auctioneers*

**41, NEW BOND STREET, LONDON, W1A 4EH**

Telephone. 01-629 0218

Telegrams. Phistamsel London W1



SALES, APRIL 5th and 6th, 1971

LOT	£	LOT	£	LOT	£	LOT	£	LOT	£	LOT	£
1	16	51	11	101	15	151	4½	201	85	251	52½
2	16	52	110	102	20	152	72½	202	5	252	42
3	15½	53	13	103	18	153	130	203	6½	253	40
4	17	54	44	104	48	154	17	204	12	254	140
5	27	55	14	105	18	155	17	205	6	255	130
6	20	56	26	106	17	156	10	206	145	256	23
7	15½	57	38	107	22	157	19	207	13	257	12
8	22	58	30	108	34	158	13	208	15	258	46
9	85	59	30	✓109	52½	159	18	209	19	259	67½
10	12	60	85	110	52½	160	12	210	9	260	90
11	10	61	—	111	27	161	24	211	22	261	15
12	17	62	18	112	19	162	22	212	60	262	165
13	240	63	110	✓113	80	163	21	213	10	263	withdrawn
14	57½	64	34	114	16	164	40	214	30	264	70
15	17	65	30	115	18	165	26	215	32	265	62½
16	10	66	95	116	72½	166	34	216	26	266	46
✓17	80	67	50	117	22	167	38	217	36	267	105
18	8	✓68	145	118	33	168	11	218	16	268	46
19	4	69	34	119	38	169	26	219	8	269	44
20	18	70	24	120	24	170	16	220	6	270	31
21	23	71	40	121	140	171	8	221	10	271	33
22	14	72	32	122	36	172	14	222	23	272	22
23	16	73	33	123	11	173	40	223	—	273	28
✓24	55	74	28	124	30	174	16	224	46	274	14
25	52½	75	50	125	42	175	12	225	15	275	16
26	16	76	34	126	44	176	10	226	52½	276	36
27	15	77	8	127	18	177	34	227	28	277	200
28	55	78	36	128	16	178	—	228	21	278	13
29	27	79	19	129	9½	179	26	229	19	279	36
30	25	80	30	130	20	180	60	230	16	280	44
31	9	81	40	131	18	181	11	231	22	281	8
32	26	82	26	132	15	182	140	232	42	282	34
33	65	83	7	133	17	183	34	233	28	283	340
34	55	84	20	134	11	184	34	234	28	284	140
35	12	85	17	135	72½	185	6	235	21	285	90
36	46	86	42	136	26	186	17	236	95	286	60
37	23	87	32	137	15	187	24	237	19	287	19
38	10	88	38	138	30	188	85	238	50	288	16
39	34	✓89	175	139	40	189	16	239	8	289	8
40	140	90	20	✓140	30	190	46	240	25	290	23
41	14	91	26	141	67½	191	22	241	19	291	19
42	14	92	70	142	46	192	9	242	22	292	65
43	10	93	29	143	36	193	40	243	60	293	65
44	16	94	27	144	20	194	27	244	105	294	60
45	14	95	withdrawn	145	8	195	5½	245	14	295	14
46	85	96	11	146	34	196	13	246	—	296	17
47	130	97	38	147	17	197	26	247	23	297	40
48	—	98	10	148	18	198	32	248	165	298	13
49	9	99	21	149	42	199	28	249	38	299	31
50	27	100	7	150	24	200	25	250	24	300	12

SALES, APRIL 5th and 6th, 1971

LOT	£	LOT	£	LOT	£	LOT	£	LOT	£	LOT	£
301	11	351	48	401	9	451	10	501	27	551	10
302	12	352	18	402	75	452	8	502	26	552	8
303	23	353	19	403	—	453	10	503	39	553	—
304	12	354	12	404	145	454	13	504	11	554	12
305	42	355	8	405	—	455	14½	505	13	555	10
✓ 306	120	356	39	406	17	456	38	506	37	556	10
307	29	357	23	407	20	457	24	507	44	557	22
308	13	358	44	408	5	458	220	508	120	558	12
309	80	359	17	409	150	459	11	509	80	559	10
310	35	360	—	410	4	460	26	510	75	560	9
311	12	361	16	411	8	461	28	511	50	561	20
312	14	362	30	412	8	462	23	512	19	562	6
313	18	363	24	413	60	463	13	513	4½	563	3½
314	12	364	10	414	11	464	70	514	625	564	22
315	8	365	10	415	12	465	31	515	220	565	26
316	9	366	17	416	27	466	52½	516	77½	566	—
317	62½	367	15	417	46	467	26	517	90	567	10
318	14	368	46	418	20	468	20	518	48	568	7
319	22	✓ 369	360	419	12½	469	13	519	22	569	9
320	67½	370	18	420	7	470	34	520	80	570	10
321	8	✓ 371	280	421	11	471	33	521	55	571	7
322	26	372	75	422	11	472	15	522	42	572	8
323	23	373	12	423	✓ 10	✓ 473	165	523	14	573	10
✓ 324	42	374	50	424	13	474	15	524	34	574	10
325	25	375	52½	425	7	475	5	525	21	575	—
326	25	✓ 376	100	426	12	476	17	526	8	576	12
327	4½	377	24	427	7	477	—	527	37	577	10
328	16	378	28	428	24	478	14	528	6½	578	9
329	25	✓ 379	15	429	28	479	11	529	19	579	10
330	5	✓ 380	65	430	135	480	—	530	46	580	10
331	—	381	75	431	26	481	8	531	13½	581	17
332	12	382	33	432	8	482	57½	532	28	582	26
333	22	383	12	433	10	483	—	533	25	583	22
334	11	384	25	434	18	484	12	534	11	584	17
335	17	✓ 385	67½	435	3	485	52½	535	15	585	21
336	21	386	28	436	7	486	30	536	34	586	—
337	26	387	13	437	23	487	12	537	16	587	7
338	11	388	36	438	7	488	13	538	50	588	7
339	17	389	46	439	11	489	29	539	950	589	—
340	12	390	52½	440	—	490	8	540	650	590	10
341	8	391	115	441	65	491	13	541	440	591	—
✓ 342	80	392	16	442	20	492	20	542	220	592	15
343	—	393	8	443	40	493	12	543	22	593	13
344	180	394	16	444	13	494	36	544	8	594	—
345	14	395	27	445	24	495	13	545	7	595	6
346	11	396	11	446	72½	496	6½	546	42	596	—
347	14	397	15½	447	9	497	10	547	48	597	40
348	21	398	19	448	24	498	—	548	55	598	—
349	31	399	10	449	15	499	13	549	32	599	28
350	85	400	5	450	8	500	13	550	44	600	26



SALES, APRIL 5th and 6th, 1971

LOT	£	LOT	£	LOT	£	LOT	£	LOT	£	LOT	£
601	36	630	15	659	310	688	18	717	—	746	11
602	22	631	—	660	4½	689	33	718	11	747	10
603	5	632	13	661	8	690	60	719	13	748	11
604	—	633	—	662	17	691	27	720	27	749	10
605	4	634	5½	663	7	692	21	721	110	750	36
606	3½	635	22	664	15	693	15	722	—	751	—
607	10	636	—	665	5½	694	8½	723	44	752	250
608	12	637	17	666	4	695	22	724	67½	753	260
609	9½	638	17	667	11	696	26	725	19	754	57½
610	—	639	13	668	12	697	44	726	7	755	13
611	10	640	20	669	12	698	13	727	28	756	9
612	7	641	19	670	15	699	26	728	21	757	27
613	11	642	11	671	9	700	8	729	24	758	7½
614	—	643	12	672	13	701	17	730	20	759	13
615	5	644	26	673	26	702	36	731	145	760	12
616	10	645	10	674	5½	703	30	732	14	761	16
617	—	646	—	675	52½	704	38	733	38	762	29
618	8	647	8	676	36	705	18	734	10½	763	10½
619	7	648	26	677	8	706	67½	735	21	764	24
620	5	649	—	678	16	707	15	736	22	765	26
621	8	650	—	679	16	708	32	737	12	766	8
622	21	651	9	680	23	709	44	738	14	767	50
623	16	652	3	681	52½	710	36	739	11	768	32
624	—	653	6	682	8½	711	7	740	15	769	9
625	10	654	13	683	7½	712	28	741	110	770	16½
626	10	655	40	684	7½	713	42	742	110	771	80
627	39	656	22	685	23	714	—	743	17		
628	12	657	12	686	67½	715	210	744	19		
629	23	658	52½	687	36	716	12	745	31		

TOTAL FOR SALE £26,629

SEASON'S TOTAL TO DATE £462,020

If you find that you did not secure a lot sold at your bid, the answer is that one or more similar bids were received.

When this happens, the preference is given to the first bid to reach us.