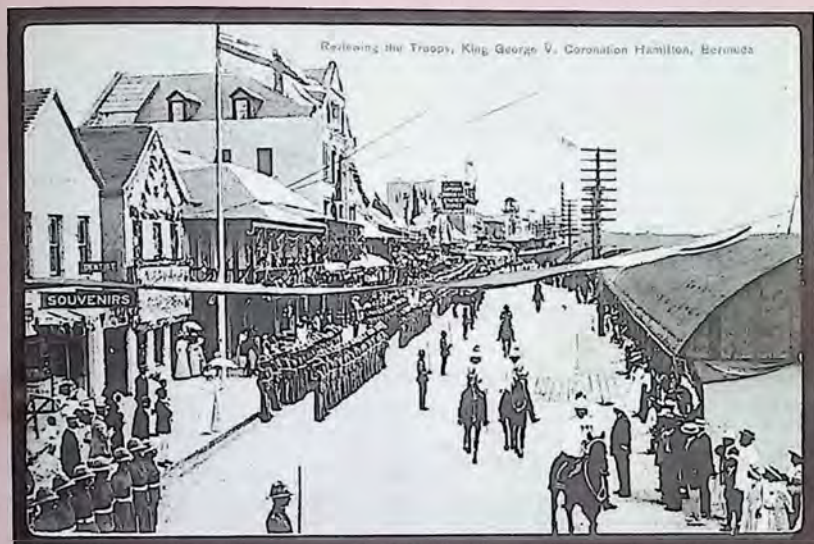


Saturday 20th September 1997
Bonnington Hotel, London

WEST INDIES



324

Public Auction No. 65



Pennymead Auctions

1 Brewerton St., Knaresborough, N.Yorks. HG5 8AZ England
Tel/Fax/Ansa: 01423 - 865962



266



281



282



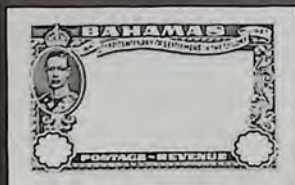
284



280



299



285



65th WEST INDIES COLLECTORS' SALE

Featuring the properties of 31 vendors including the first portion of Ken Bolton's collection of Jamaica, fine maritime covers, the property of a Canadian collector and items from the Jay Fredrick collection of Virgin Islands

Bonnington Hotel, Southampton Row, London.

Commencing at 3.30pm Viewing from 10.00am

TELEPHONE AND FAX BIDS ON SALE DAY ACCEPTED TILL 2.00pm

(or phone me at the Bonnington only after 10.00am on 0171 242 2828)

Dear Collector

Please note that you can now send E Mail to me at Pennymead@aol.com This address may change before Christmas but will certainly be good till this sale date.

This being my annual room auction I have struggled to find some better and unusual pieces. I feel I have been successful thanks to customers who have, in some cases rather reluctantly, parted with some of their treasures. Lotting the sale has been good fun and thrown up a few surprises the best being the G.B. 4d used in Montserrat which I discovered in a small collection of Jamaica postmarks!

Please note the changes to my terms and conditions of sale on the next page. Bidding steps have been simplified to make running of the room auction quicker and easier and due to a few persistent slow payers extra penalty clauses have been introduced for late payment.

Please see Sale 64, page 1 for Terms to Vendors.

The next sale is scheduled for 4th December.

Yours sincerely

David Druett

CROSS REFERENCE INDEX

Air Mails/First Flights	272 382-3 386 445-78
Censored mail	273 381 387 591 643
Maritime	239-40 246-50 257 271 277 286 305 313 320 343 358 379-80 385 396 414 439 442 480 524 539 546 551 560-3 565 575 578 594 599-600 615
Military/Soldiers letters	527 612

VIEWING AT LEAMINGTON SPA

All lots will be available for viewing at the B.W.I. Study Circle convention on Saturday 13 September at the Regent Hotel. The Convention opens at 10.00am. and closes at 5.00pm. The convention is open to non members. Please note a small convention fee of £2-£3 is levied which covers some refreshments on the day.

ABBREVIATIONS AND DEFINITIONS

b/stamp	backstamp	horiz.	horizontal	Sc	Scott
cds	circular date stamp	illus.	illustrated	SG	Stanley Gibbons
comp.	complete	inv.	inverted	S.T.C.	Stated to catalogue
compr.	comprising	l.m.m.	lightly mounted mint	T.R.D.	temporary rubber ds
c.t.o.	cancelled to order	m.m.	mounted mint	u.m.	unmounted mint
ds	datestamp	M.S.	miniature sheet	unused	(without gum)
dupl.	duplicated	m/s	manuscript	v.f.u.	very fine used
EL	entire letter	marg.	marginal	v.g.u.	very good used
F.D.	first day	o.g.	original gum	vert.	vertical
F.D.C.	first day cover	ovpt.	overprint	wmk	watermark
F.F.C.	first flight cover	pmk.	postmark		
f.u.	fine used	pp	pages		
g.u.	good used	p.p.c.	picture postcard		
h/s	handstamp	s/l	straight line		
H/G	Higgins and Gage	s/ways	sideways		

NOTES FOR GUIDANCE OF BIDDERS

1. Conditions of sale. The Philatelic Auctioneers' Standard Terms and Conditions of Sale will apply, a copy of which will be sent on receipt of an S.A.E.
2. Enter on the postal bidding form the maximum amount you are prepared to pay for all of the lots in which you are interested. You may limit your total expenditure (excluding post and packing, V.A.T. where applicable and buyers premium) by marking the box provided.
3. The Auctioneer will bid on your behalf free of charge and buy at the lowest possible price subject only to other bids received or reserves, i.e. at one bidding step above the second highest bid. Where a single bid higher than the estimated price is received, the lot will be sold at estimate however high the bid.
4. E-Mail, Telephone or Fax bids may be made but should be confirmed in writing.
5. No lot will be sold for less than 75% of estimate.
6. Bidding increases are as follows:

Up to £10 in 50p steps	£50 to £100 in £5 steps	£500 to £1000 by £50 steps
£10 to £20 in £1 steps	£100 to £300 in £10 steps	£1000 & over by £100 steps
£20 to £50 in £2 steps	£300 to £500 in £20 steps	
7. For immediate delivery of your purchases a signed blank cheque, crossed 'Not negotiable' and made payable to 'Pennymead Auctions' should be enclosed with your bids or your credit card details should be completed. Your cheque will be returned should you be unsuccessful.
8. In all other cases a Pro Forma Invoice will be sent. Payment should be made within 7 days of receipt.
9. Amounts outstanding after 30 days of the auction will be subject to the following charges:
An administration fee of £10 plus interest at the rate of 2½% per month (or part month).
10. CREDIT facilities or an extended payment plan can be arranged but clients must establish prior agreement.
11. The cost of post, packing and insurance is paid by the purchaser. Lots sent overseas will be dispatched by either surface or air mail depending on weight and value at my discretion but special instructions may be noted on the bidding form.
12. VIEWING: I will send suitable lots by post to clients known to me or to new clients supplying first class references. Postage and insurance or registration costs as necessary must be defrayed and PROMPT RETURN GUARANTEED.
Alternatively photo-copies of suitable lots are available at 10p per copy plus large size S.A.E.
Viewing before the sale can easily be arranged at my premises by telephone appointment.

Pennymead Auctions

1 Brewerton St., Knaresborough, N. Yorks HG5 8AZ, England

Tel/Fax/Ansa: 01423-865962



SALE No. DATE

Please bid on my behalf for the following lots up to the amounts stated if necessary. I have read and agree to your conditions.

Signature

Name (Block letters)

Address (Block letters)

Telephone No.

Please state total purchase limit, if any £ (excluding V.A.T.)

I wish to pay by *Visa/Access/Mastercard No.

*Delete as appropriate

Expiry Date Signed

I enclose a signed blank cheque (tick if appropriate)

Special posting instructions (if any)

Please note all bids must be in sterling.

V.A.T. will be added on all taxable lots. A list of non-taxable lots may be found at the back of the catalogue.

Note: No V.A.T. on goods sent overseas.

Buyers Premium 5%.



Airmail your bids - our post is subject to delays.

Lot	Country	Limit excl. V.A.T.		Lot	Country	Limit excl. V.A.T.	
		£	p			£	p

Lot	Country	Limit excl. VAT		Lot	Country	Limit excl. VAT	
		£	p			£	p

Lot	Description	Est £
MISCELLANEOUS		
239.	Selection of covers all with maritime markings incl. 1937 Gibraltar Paquebot cds on U.S. 3c and 1947 cover from Peru to New York with fine boxed 'STEAMER MAIL' cachet in blue. (12)	25.00
240.	ROYAL MAIL STEAM PACKET CO: good selection of mostly p.p.c.'s, 1906-48, all with ship cachets incl. 3 with large two line 'POSTED ON THE HIGH SEAS' marks. Fine condition. (10)	60.00
241.	Collection of world-wide forgeries well written up on leaves. Much connected with Fournier incl. two printed envelopes from his company in Switzerland and a letter on his attractive headed stationery offering approval selections. Many examples of Fournier's work are included incl. two good forgeries of Swiss Cantonal's each on piece tied by pmks., a page of forged Swiss postmarks, genuine Austrian p. stat. envelopes with perfs added to create the rare litho stamps. Scarce forgeries produced by S. Allan Taylor of U.S. Kers City Post labels (5). Plus many more litho forgeries, forged ovpts. and background articles and info. Viewing recommended. (229)	300.00
242.	SOUTH AND CENTRAL AMERICA: early/modern mainly used ranges on leaves. Countries incl. Chile, Cuba, Honduras, Mexico, Nicaragua and Panama. (1700+)	50.00
243.	Mainly middle period, mostly used accum. on old stock leaves. Most countries represented incl. Fr. Col., Mexico, Cuba, Panama and Canal Zone. (770 approx.)	30.00
244.	BRAZIL: early to middle period ranges on old stock leaves. unchecked. (265)	25.00
245.	COLOMBIA: early to middle period ranges on old stock leaves with useful looking earlyies but remaining unchecked. (300+/-)	34.00
246.	Selection of 1930's maritime covers incl. 1933 with Grace Line Santa Rosa maiden voyage cachet and s/l 'M.V. GEORGIC' cachet on 1935 attractive illust. cover. (4)	20.00
247.	1906 cover to U.S.A. with 5c blue tied by fine 3 line 'HAMBURG AMERIKA LINIE MAR 14 1906 ATLAS DIENST - D. ALENE' cachet in purple. U.S. arrival mark on reverse. Fine.	75.00
248.	1910 (circa) p.p.c. to Germany with 2c red tied by fine double oval 'HAMBURG - AMERICAN LINE ATLAS SERVICE Posted on the High Seas S.S. ALLEGHANY' cachet in purple.	40.00
249.	1910 (circa) p.p.c. of Jamaica to U.S.A. with 2c red tied by good double oval 'HAMBURG-AMERICAN LINE ATLAS SERVICE Posted on the High Seas S.S. ALLEMANNIA' cachet in purple. Message written in Jamaica.	40.00
250.	1912 cover to New York with 5c blue tied by New York Paquebot ds. Endorsed 'S.S. Trent' above s/l 'POSTED ON THE HIGH SEAS' cachet in purple. Fine.	30.00
251.	FALKLAND IS. DEP.: 1946-9 1d (SG G2), lower right corner plate 1A block of 4, one with broken arc variety on pos. 49. Light central South Georgia Aug 47 cds cancel, v.f.u.	9.00
252.	9d (SG G7), with broken arc variety, pos. 49, with similar cds, v.f.u.	8.00
253.	2d (SG G3) marg. pair with variety broken 'O' in 'COATS' on pos. 19, u.m.	8.00
254.	G.B. 1810 EL from Portugal to England with a fine strike of the scarce 'LISBON F JU 22 1810' ds in green applied at Falmouth. Carried on the Princess Elizabeth packet and rated 2/4d. Fine.	160.00
255.	MEXICO: early to middle period ranges on old stock leaves. (500+)	50.00
256.	PANAMA: early to middle period ranges on old stock leaves, largely unchecked. (250+/-)	30.00
257.	TRISTAN DA CUNHA: 1934 cover to Jamaica with G.B. 1½d tied by boxed 'Paquebot Posted at Sea' h/s. 'TRISTAN DA CUNHA' cachet (SG C6) at top and good oval 'R.M.S.P. ATLANTIS Posted on the High Seas 19 FEB 1934' cachet below. Scarcer commercial use.	40.00
258.	URUGUAY: early to middle period ranges on old stock leaves. Unchecked. (200+/-)	20.00
WEST INDIES		
259.	COVERS: selection incl. Barbados p. stat. formular card with ½d and damaged 1d Britannias, 1919 Bahamas cover with mixed War Tax franking and 1926 real photo p.p.c. of Trinidad Fire Station. (4)	12.00
260.	POSTMARKS: selection incl. good INAGUA cds on Bahamas EDVII 1d, Caymans Rural Post boxed cancel on ½d, selection of Dominica village cancels on EDVII-GVI range, few cancels on Leewards issues plus St Lucia incl. village cancels on QV issues with 'VF' code noted. (44)	16.00

New E Mail address: Pennymead@aol.com

ANTIGUA

See also lots 449-451

261. REVENUES: 1870 Stamp Duty specialised study with dup. mint and used vals to 10/- incl. some multiples. Plus Antigua and Leeward Is. postage stamps used with revenue cancels with high vals. noted. (76) 100.00
262. 1798 (21 July) EL to C. Tudway, Wells, England with light strike of s/l 'ANTIGUA' (RL PD 13). Rated 3/4d. Fine condition. Letter from plantation manager to the owner describing crops and mentions sending original of this letter by HM war ship. (Photo) 200.00
263. 1863-7 Small star, rough perf 14-16, 1d vermilion (SG7), horiz. strip of 5, f.u. A scarce used multiple. (Photo) 100.00
264. 1884-6 Crown CA, perf 14, 1d carmine red (SG25), complete sheet of 120 with full margins, showing the prominent re-entries on position numbers 8 and 20, fine mint. Impressive display piece. 120.00
265. 2½d with variety large '2' in '2½' with slanting foot (SG27a), m.m. (Photo) 50.00
266. 6d deep green (SG29), block of 4, gum yellowing and gum tone spot on one perf, fresh o.g. Scarce and attractive multiple. (Photo) 120.00
267. 1908 O.H.M.S. cover to England with good strike of scarce 'OFFICIAL PAID ANTIGUA * JA 25 08' cds. Clean and attractive. 75.00
268. 1908-17 Mult CA, 2d (SG45), 'St Johns C AP 25 12' cds, v.f.u. 8.00
269. 1921-9 Mult CA 2/6d (SG59), f.u. 16.00
270. 1933 reg. cover to U.S.A. with Tercentenary 1½d and 2d tied by fine 'SEATONS * MR 7 33' cds. Clean and attractive. 75.00
271. 1937 cover to England with 1½d tied by London F.S. Paquebot m/c. Scarce oval 'HARRISON LINE S.S. INKOSI POSTED ON BOARD' cachet in purple at top left. 25.00
272. 1938 (14 Mar) air mail cover to U.S.A. with 1921-9 3d and two marg. copies of 6d (SG74-5) tied by St Johns cds's. Endorsed, 'Via PANAIR VIA NEW YORK.' Clean. 12.00
273. 1942 cover to U.S.A. with Leewards 1½d pair tied by St Johns cds. Plain brown tape at left tied by large s/l 'EXAMINED BY CENSOR E.' h/s with m/s 'B/2' inserted in blue crayon. 25.00

BARBUDA

274. 1923 reg. O.H.M.S. F/S size cover to England with 1922 3d pair and 6d (SG5 and 9) tied by Barbuda cds. Boxed Barbuda reg. h/s in red at left. Clean and attractive. 50.00
275. 1932 reg. cover to Rev Iremonger with Tercentenary 6d tied by fine Barbuda cds. Barbuda reg. label at left. Clean. 36.00

BAHAMAS

276. FORGERY collection written up on leaves of Chalon 1d (3), 4d (8), 6d (7) also 1/- (3) and 'FOURPENCE' on 6d forged ovpt. Includes scarce engraved forgery of 6d by Oneglia and photo of 1/- engraved forgery plus examples of genuine. (31) 85.00
277. MARITIME COVERS: good selection incl. 1902 Hamburg Amerika Linie printed cover to U.S.A. with QV 1d tied by 'Paquebot (NY 2D DIV)' h/s, 1909 p.p.c. to England with 1d Staircase and U.S. 2c tied by Miami m/c and 'Paquebot' h/s in red also 1934 cover with U.S. 2c and 3c tied by SHIP MAIL h/s, Nassau cds and 3 line 'Posted on the high seas The S.S. Prince David' cachet. (7 + a front) 36.00
278. POSTMARKS: useful selection with better Out Island cancels noted incl. 'Governors Harbour' on QV 1d, 1910 Tarpum Bay and 1922 'The Ferry Exuma.' (52) 15.00
279. Spiro forgery of perf Chalon 1d red. A full sheet 5 x 5, with margins and barred 'postmarks' printed on. Few minor tone spots but impressive. 40.00
280. 1861-2 Rough perf 14-16, 1d lake (SG4), good perfs, colour slightly faded, v.g.u. Cat £300. (Photo) 50.00
281. 1882 Crown CA, perf 12, 1d scarlet vermilion (SG40), block of 4, pos. 26-7, 36-7, with small plate scratches on pos. 26, 27 and 36, fine mint. (Photo) 120.00

Lot	Description	Est £
282.	1882 Crown CA, perf 12, 1d scarlet verm. (SG40) block 3 x 2, pos. 42-4, 52-4, fine o.g. (Photo)	180.00
283.	1901-3 Crown CC, Staircase set to 3/- (SG58-61), gum wrinkle on 5d, m.m. (4)	18.00
284.	1902-10 Crown CA £1 (SG70), marg. block of 4, overall gum toning, fresh o.g. Cat £1000. (Photo)	100.00
285.	Ditto, light Nassau cds, toned corner perf, f.u. Cat £325. (Photo)	100.00
286.	1905 p.p.c. of Jamaica to Colombia with message headed 'Fortune Island.' U.S. 2c tied by fine 3 line 'HAMBURG AMERIKA LINIE SEP 11 1905 ATLAS DIENST - D.ALLEGHANY' cachet in blue.	75.00
287.	1911-9 Mult CA, Staircase set to 3/- (SG75-80), gum wrinkle on 3/-, m.m.	18.00
288.	1919 War Tax 3d (SG100) part sheet, 3 x 5, with margins on 3 sides also 1d War Charity (SG101) marg. block 3 x 5, u.m.	7.50
289.	1919 (29 Jan) F.F.C. to Miami with 1/2d and 2d tied by Nassau cds. Good two line 'BY AIR SERVICE NASSAU TO MIAMI' h/s. Roughly opened at top. <i>This was the first successful ocean flight made by two U.S. navy planes.</i>	75.00
290.	1921-9 Script CA, Staircase set to 3/- (SG 111-4), m.m. (4)	14.00
291.	1925 reg. cover to England with 1d cancelled in m/s in blue ink '29/5/25 Nicholls Twn Andros.' Cover with piece missing from top right where another stamp has been removed leaving a portion of a Nassau cds. Still rare.	Reserve 150.00
292.	1927 (21 Jun) cover to McFarlan, U.S.A. with 1d tied by light strike of 'NICHOLLS TOWN' cds (LKD). Clean.	20.00
293.	1937 reg. air mail express delivery cover to U.S.A. with pair of 8d flamingos tied by Nassau cds. Red 'Express Delivery' label and on reverse 'Come to Nassau Only 2 hours by air from Florida' col. advertising label. Attractive.	36.00
294.	1940 attractive illust. cover with view of Williamson Photosphere used to U.S.A. with 4d tied by 'SEA FLOOR MAY 6 1940' double oval T.R.D. Clean.	7.50
295.	1941 and 1952 covers to McFarlan with Pure Gold and Mount Thompson (in violet) cds's plus 1948 cover with Bluff Eleu cds, latter with faults.	8.00
296.	1944 cover to Trinidad with 2d tied by slightly doubled strike of 'SIMMS DEC 22 1944' double oval T.R.D. 'Opened by Examiner IG/7241' tape at left.	20.00
297.	1947 cover to Nassau with 1/2d tied by scarce 'FARMERS CAY MAR 16 1947' oval T.R.D. assisted in ink (hopefully by the Postmaster). Clean.	20.00
298.	1947 local cover with Victory pair tied by fair 'DEVIL'S POINT APR 4 1947' large circular T.R.D.	8.00
299.	1948 Tercentenary issue: die proof of the frame plate on glazed card 90 x 75mm. Fine. (Photo)	300.00
300.	1952 cover to McFarlan, U.S.A. with 1d pair tied by fine strikes of 'ORANGE CREEK MAY 19 1952' double circle T.R.D. in purple.	16.00
301.	Similar cover with 2d tied by fine strikes of 'MAN-OF-WAR Cayman Is. MAY 14 1952' double circle T.R.D. in black.	16.00
302.	1960 cover to McFarlan, U.S.A. with 1/2d strip of 3 tied by fine 'FOX TOWN SEP 18 1960' double circle T.R.D. cancels. Clean.	8.00

BARBADOS

See also lots 1 - 238 (sale 64) and 562

303. COVERS: useful small selection incl. 1952 p.c. with St Joseph cds, 1952 local cover with Black Rock cds and two GVI 6d p. stat. air letters. one unused. (9)
304. COVERS: selection of GVI covers incl. 1945 reg. air mail to U.S.A. with 4d and 1/- and unusual pink reg. label. 1938 to U.S.A. with s/l 'PAQUEBOT' h/s and endorsed 'S/S Veendam.' 1937 to England with boxed 'Hamburg-Amerika Linie M.S. Cordillera plus 1961 reg. to Canada with s/l 'Onward by Sea' h/s. (9)

Lot	Description	Est £
305.	MARITIME COVERS: useful selection incl. 1922 to U.S.A. with G.B. 1d (3) and 1/4d tied by Barbados cds's also oval 'Posted on the High Seas S.S. Vandyck' cachet. 1931 to England with pair of 1/4d's tied by Cristobal Paquebot duplex and s/l 'M.S. Colombia' ship cancel and two covers with boxed K.N.S.M. S.S. Costa Rica' cachets. 15)	50.00
306.	POSTMARKS: selection incl. good 1st type '9' obliterator on 1d and various later Parish cancels. (17)	10.00
307.	POSTMARKS: selection of bootheel pmks. on Britannia issues incl. two good strikes of '5' on 1/4d and 1d. (10)	12.00
308.	POSTMARKS: small collection on leaves with a few bootheels. Strength in later Parish cancels incl. scarce M2 type cancels, '2,' '3' (2), '5,' '9' and '10'(2) also 1892 local cover with 1d tied by CH CH cds plus 'MS Colombia' ship cancel on piece and map of the island. (76)	40.00
309.	Bacon & Napier, 'Barbados, with a history and description of the star watermarked papers of Messrs Perkin, Bacon & Co.' S.G. handbook, 1896. 119pp + plates. Clean copy needing to be rebound.	30.00
310.	1732 (11 Oct) EL to Glasgow landed at Tenby in Wales with albino strike of s/l 'TENBY' also faint strike of Bishop mark. Various rate marks. The cover has been professionally restored with paper added to cover small portions missing and cleaned. An early letter from Barbados and probably the first use of Tenby h/s as a ship letter arrival mark.	90.00
311.	1875-8 Crown CC, perf 14, 1/4d (SG72), ovptd. 'TOO LATE' fresh o.g., small thin. Status uncertain. (Ex Edmund Bayley) (Photo)	30.00
312.	1d grey blue (SG74) ovptd. 'TOO LATE' fine o.g. (Ex Bayley) (Photo)	30.00
313.	1904 p.p.c. to England with GB 1d tied by fine s/l 'SEA POST' in purple and Barbados cds. Bath cds at left. View of village of Laborie in St Lucia where message was written. <i>I am unsure where the Sea Post mark was applied and have never seen one before.</i>	80.00
314.	1916-9 Mult CA 1d deep red (SG183) with inv. wmk. variety, corner marg. copy, m.m.	16.00
315.	1938-47 perf 14 4d with variety curved line at top right (SG253db), m.m.	20.00
316.	4d horiz. pair one with cracked plate variety (SG253dc), tiny gum tone spot, mint.	15.00
317.	1980-5 On Service local F/S size covers with range of different franks of Barbados Defence Force. (7)	16.00
BERMUDA		
<i>See also lots 178, 226 and 469</i>		
318.	Varied selection with few numeral cancels noted (2, 3, 4 and 12), 1d dock used blocks of 4 (2) and GVI 2/- and 5/- key plates plus GV-QEII range of village pmks. (52)	20.00
319.	COVERS: useful range in large album incl. 1883 to England with 4d tied by St Georges duplex. 1899 T.J. Pearman & Son Dry Goods advertising cover to London with pair of 1d's also 1899 local cover with 1d tied by Mangrove Bay cds. Good range of Ship types, some in blocks of 4 on covers to U.S.A. 1920-1 Tercentenary 2d, 3d, 4d and 6d on cover to U.S.A. Fine selection of Silver Jubilee vals on covers incl. set on F.D.C. also Paget cds on 2/4d noted. 1936-47 set on F.D.C. (2) and good range of GVI covers incl. vals to 1/- on F.D.C. (2) and 2/- keyplate on 1941 air mail cover to England plus various village pmks. Also two 1948 covers with large I.A.T.A. cachets. (135)	200.00
320.	MARITIME COVERS: selection incl. 1906 p.p.c. to England with 1d Caravel tied by Hamilton cds. Fine 'SHIP LETTER LONDON' cds at lower left. 1910 p.p.c. to U.S.A. with G.B. 1d tied by New York Paquebot cds. Scarce oval 'R.M.S.P. TRENT' dated cachet. Two 1936 illust. covers with 'Mail Office H.M.S. Apollo' cachets and 1937 to U.S.A. with Canada 3c tied by s/l Paquebot h/s and R.M.S. Lady Drake' circular cachet at left. (12 + a front)	70.00
321.	POSTMARKS: selection incl. numeral cancels '2,' '3,' '6' and '13' plus various later village cds's. (23)	8.00
322.	1901 F/S size reg. cover to HMS Indefatigable, Ireland Island with 1901 1/4d on 1/- (SG30) marg. block 6 x 4 with neat Hamilton cds cancels. 'R' in oval at left. Attractive.	60.00
323.	1902-4 Crown CA, 3d (SG33). ovptd. Specimen. m.m., hinge rems.	14.00
324.	1912 col. p.p.c. with view of 'Reviewing the Troops, King George V. Coronation, Hamilton, Bermuda.' Pub. by Phoenix Drug Co., no. 5. Fine unused. (Photo on front cover)	30.00

Lot	Description	Est £
325.	1918-22 Mult CA 5/- with broken scroii variety (SG53ca) on 1928 reg. cover to Canada together with 4/-, Ship vals to 1/- and 1924-32 2/- and 2/6d (perf fault) tied by Hamilton cds's. Impressive and scarce franking. (Photo)	250.00
326.	1922-34 Script CA 2/- (SG88c), July '31 ptg., with flaws 60b and e, latter a major flaw, fine m.m.	36.00
327.	10/- (SG92), Aug/Sep '26 ptg., with flaw 36A, state ii, fine m.m. (Photo)	85.00
328.	1932 cover to London with St Lucia 2d tied by s/l 'PAQUEBOT' h/s and Bermuda Ship 1d tied by Hamilton cds. Most unusual mixed franking.	50.00
329.	1935 cover to Scotland with Jubilee 1d and 1/4d tied by scarce 'SOMERSET BRIDGE' cds's. Clean.	30.00
330.	Similar cover with fine 'SOUTHAMPTON WEST' cds's. Clean.	30.00
<i>1938-53 high values arranged by printings with flaws identified as per Dickgiesser handbook</i> (Copies available price £40)		
331.	Complete set of perf 13 high values plus 1/4d, 1d, 7/4d and 1/6d on 1952 F/S size air mail cover to New York all neatly tied by Hamilton cds's. Blunt perf on £1 does not detract from fine appearance. (Photo)	250.00
332.	2/- perf 13 (SG116f), Feb '52 ptg., a fine marg. block 3 x 5 with margins at top and bottom, pos. 5-7, 17-19, 29-31, 41-3 and 53-5 with flaws 6a and b, 7b and c, 17b and 29a. Corner crease affects one, u.m.	120.00
333.	5/- perf 14 (SG118ea), Mar '44 ptg., with missing pearl variety, flaw 49b, fine mint. Cat £400. (Photo)	160.00
334.	5/- perf 13 (SG118g), Aug '50 ptg., marg. copy, pos. 5, u.m.	12.00
335.	10/- perf 13 (SG119f), Jan '53 ptg., with flaw 17b, l.m.m.	14.00
336.	Ditto, corner marg. copy pos. 60, fine u.m.	Reserve 30.00
337.	12/6d perf 13 (SG120e), Aug '50 ptg., marg. copy, pos. 56, l.m.m.	32.00
338.	£1 perf 14 (SG121b), Dec '46 ptg., block of 4, mtd. on two, fine mint.	160.00
339.	Ditto, corner plate block with flaws 47, 59b and 60c, u.m.	200.00
340.	£1 perf 13 (SG121c), Nov '51 ptg., marg. block of 4, pos. 45-6, 57-8, mtd. on one, fine mint.	120.00
<hr/>		
341.	1948 Royal Silver Wedding pair on F.D.C. to England. Clean.	30.00

BRITISH GUIANA

See also lots 192 and 453-4

342.	QV-EDVII used range from 1863-75 issue. Worth checking for varieties/pmks. (36)	7.50
343.	COVERS: 1886 cover to Peters Hall on the Demerara River with 2c orange tied by Suddie cds. 1889 local cover with '2' on 2 cents (SG192) tied by Georgetown cds. 1893 cover to U.S.A. with 5c tied by cds endorsed 'Per Str Stratharon' and 1904 p. stat. reg. env. used locally with 1c and 2c. (4)	36.00
344.	POSTMARKS: selection on s/cards incl. fine strikes of 'T.P.O. CANJE AU 16 1901' on 2c (T & H type 8, very rare), 'MAHAICA 4 DE 95' double circle cds on 2c & 'AGRICOLA OC 25 1899' cds on 1c. (65)	30.00
345.	1863-75 perf 10, 8c pink (SG95) h/s 'SPECIMEN' in serrifed caps (Samuel type 1), fine o.g. (Photo)	100.00
346.	Perf 15, 4c bright blue (SG109), h/s 'SPECIMEN' in serrifed caps (Samuel type 1), fine, part o.g., hinge rems. (Photo)	100.00
347.	1876-9 Crown CC, perf 14, 1c (SG126), h/s 'SPECIMEN' in large serrifed caps (Samuel type 2), perf faults, fresh unused. (Photo)	50.00
348.	4c (SG128), h/s Specimen (Samuel type 2), fresh unused. (Photo)	60.00
349.	12c (SG131), h/s Specimen (Samuel type 2), fine and fresh unused. (Photo)	65.00
350.	24c (SG132), h/s Specimen (Samuel type 2), perf faults, fresh unused. (Photo)	50.00
351.	1884 p. stat. 3c card used to England with fine 'BELFIELD double circle cds also fine 'DEMERARA RAILWAY' double circle cds. Minor tone spotting.	36.00
352.	1934 p. stat. 3c envelope (H/G B8), fine unused.	8.00
353.	Ditto, a similar lot.	8.00

Lot	Description	Est £
354.	1938 p. stat. 1c and 2c wrappers on granite paper (H/G E6c and 7b), fine unused.	15.00
355.	Ditto, a similar lot.	15.00
356.	194(?) p. stat. 6c reg. env. with mesh lining (H/G C12), fine unused.	16.00

GUYANA

357. 1985 Abolition of Slavery: Format International progressive colour proofs in comp. se-tenant sheets of 100 or 200 with values printed in multiples on one sheet, u.m. (2250) Reserve 500.00

BRITISH HONDURAS

358. MARITIME COVERS: selection of GV covers, 4 with United Fruit Co cachets and one with pair of 2c's tied by New Orleans m/c plus s/l Paquebot' h/s also 1938 cover to U.S.A. with 2c and 3c tied by New Orleans duplex and s/l Paquebot. (6) 40.00
359. POSTMARKS: small selection with fair strikes of Corozal. Stann Creek and San Estevan cds's on QV-GV range. (17) 6.00
360. POSTMARKS: QEII p. stat. 2c postal cards used in 1964 to Belize with dup. range of village postmarks. Fine condition. (96) 25.00
361. 1850 cover to England with fine 'BELIZE FE 10 1850' double arc cds on reverse, also London and Bristol arrival marks. Rated 1/-. Opens out well. 100.00
362. 1854 EL from Bordeaux to Guatemala sent via London and Belize. Bordeaux cds, boxed 'PD', London Paid cds and h/s '4' h/s (applied in Guatemala?) on front. On reverse Bordeaux A Paris cds and good 'BELIZE OC 10 1854' double arc cds. Clean. Written on very thin paper with hand writing showing through. 160.00
363. 1872-5 Crown CC 3d red brown imprimatur. Three good margins, fresh. Rare. (Photo) 90.00
364. 6d rose imprimatur. Four good margins, fresh and fine. Rare. (Photo) 120.00
365. 6d rose carmine imprimatur. Four good margins, fresh and fine. (Photo) 120.00
366. 1/- green imprimatur. Four good to large margins, fresh and fine. Rare. (Photo) 120.00
367. 1882-7 Crown CA 6d yellow (SG21). Die proof in issued colour of Sperati forgery on wove paper. Signed in pencil by Sperati in lower margin and with 'Sperati Reproduction' h/s on reverse. Fine and scarce. (Photo) 250.00
368. Similar Sperati die proof of 1/- grey (SG22). Fine. (Photo) 250.00
369. 1888-91 surch. in London, 6c and 20c (SG39, 41), each in block of 4, f.u. Cat £88+ 40.00
370. 1891 surch. 5c on 3c on 3d block of 4, one with variety wide space between 'I' and 'V' (SG49a), v.f.u. 40.00
371. '15' on 6c on 3d (SG50), block of 4, y.f.u. 40.00
372. 1932 reg. cover to Austria with Belize Relief Fund set (SG138-42) in pairs tied by Belize cds's. Clean and attractive. 80.00

CAYMAN ISLANDS

See also lots 470-2

373. Fine used collection on leaves with issues to 1968 virtually complete lacking only the scarce surcharges and a few top vals. Additional shade and paper varieties on GV and GVI issues. Condition mostly fine to very fine. S.T.C. £2230. (276) 700.00
374. 1890-94 Jamaica used in: 1890 1/2d Official with part strike of oval '(GRAN)D CAYMA(N POST OFFICE OC)T 23 1890' ds in purple (SG Z14). Pulled perf and small tear at top o/w fine. Cat £750. (Photo) 60.00
375. 1912-20 Mult CA 1/2d (SG41) on piece cancelled by fine upright and complete strike of boxed 'EAST END Grand Cayman RURAL Post Collection' cancel in purple. (Photo) 36.00
376. 1916 reg. cover to Monty Ward. U.S.A. with 1912-20 1/2d (2) and 2d (2) tied by Georgetown cds's. Blue crayon boxed 'Grand Cayman R1434' mark and 'R' in oval h/s. Small opening tear at lower left o/w fine. 60.00
377. 1917 War Stamp 1/2d on 2/2d with missing fraction bar (SG54a), m.m. 16.00

Lot	Description	Est £
378.	1932 Centenary 6d (SG91) horiz. pair on cover front to Scotland tied by fine 'CAYMAN BRAC AP 7 1933' cds's. Fine boxed 'R Cayman Brac, B.W.I.' reg. h/s in purple at lower left. Attractive.	20.00
379.	1937 souvenir cover with 1d tied by Georgetown cds. Oval 'R.M.S. ATLANTIS Purser's Office' dated cachet at left. Unaddressed.	10.00
380.	1940 cover to R. Wells, Cayman Brac with Montserrat 1/2d tied by cds, a further good strike of 'HARRIS' cds at left. 'T' h/s applied and Caymans GVI 2d applied and cancelled by 'T' in circle h/s (used as p. due). Hamilton Bermuda transit cds on reverse together with Cayman Brac and GPO Plymouth cds's. Clean.	16.00
381.	1940 (16 Jly) cover to U.S.A. with 1/2d and 2d tied by Georgetown duplex. Scarce green 'Opened by Censor' label (CL1) at lower left. Fine.	44.00
382.	1966 (17 Dec) F.F.C. addressed to Canal Zone with 1/2d and 9d tied by Georgetown cds's. Boxed 'First Jet Flight Boeing 727 from Grand Cayman, C.I. to Miami, Florida' cachet and boxed 'Second Class Air Mail' h/s both in purple.	10.00
383.	1978 (29 Oct) F/S size illus. Caymans Airways F.F.C. to U.S.A. with 20c tied by Georgetown cds. Boxed 'First Flight from Grand Cayman, B.W.I. to Houston, Texas 29th October 1978 Cayman Airways' cachet.	10.00

CUBA

384.	1865-77 G.B. Used in Havana: 4d plate 12 on piece tied by 'Havana JU 6 71 C58' duplex (SG Z6). Fine apart from cut perfs.	7.50
385.	1932 cover to U.S.A. with U.S. 1c and 2c tied by large circular 'United Fruit Company S/S Antigua' cachet with Havana m/c b/stamp also 1935 cover to Jamaica with 1c and pair of 2c's tied by Paquebot Kingston cds with similar U.F.Co cachet but ship name not clear. (2)	20.00

CURACAO

See also lot 181.

386.	1935 (10 Dec) F.F.C. per Snip Netherlands - Curacao and return with special cachets and frankings.	18.00
387.	1941 air mail cover to U.S.A. with 10c and 15c tied by Williamstad cds. Boxed 'Insuffisament affranca' h/s and triangular 'Niet Geopend door censuur Curacao' h/s with arms in centre. Clean.	10.00

DANISH WEST INDIES

See also lots 108, 151, 152, 162, 164, 173, 188 and 557.

388.	1865-79 G.B. Used in: 'C51' cancels on 4d pl 12 (faults) and 14 and 1/- pl. 4 f.u. (SG Z10, 28). Cat £150. (3)	40.00
389.	1875 large part cover, lacking part of back, to Hamburg with GB 1/2d, 1d and 1/- (SG Z1, 3 and 30) tied by St Thomas Paid duplexes. London Paid cds and oval 'Klingberg Krers & Co St Thomas' firm's cachet. Fine and most attractive. (Photo)	250.00
390.	1912 p.p.c. to Mexico with 10 bit on picture side tied by 4 ring dumb cancel. St Thomas cds and Mexico arrival marks. Attractive view of Bethany Mission House.	36.00

DOMINICA

391.	REVENUES: 1879-88 Crown CA, 1d lilac (SG R4), comp. left hand pane of 60 with full margins. Light overall gum toning o/w fine. Impressive and scarce multiple.	80.00
392.	1768 EL to James Gordon in Madeira care of a firm of merchants in London with fair two line 'PORTSMOUTH SHIP LRE' and Bishop mark. Rated 7d. On reverse m/s forwarding agent endorsement. 'Forwarded by your Hble Servt. Erasmus Carver.' A fine early letter from the colony. <i>Only one earlier ship letter has currently been recorded for the first period of British Occupation (1763-1778)</i>	300.00
393.	1874 Crown CC, perf 12 1/2, 6d green imperf plate proof block of 4 in green on surfaced paper, each ovoid. 'CANCELLED' (Samuel D7). Fine. (Photo)	450.00
394.	1903 scarce local cover to 'Woodford Hall, Lasoye' with Leewards 1902 'One Penny' on 7d (SG19) tied by Dominica cds. Clean.	75.00

Lot	Description	Est £
395.	1907 reg. cover to Germany with 1903-7 2d, 1/- (2), 2/-, 2/6d and 5/- tied by Gen Post Office cds's. Small boxed 'R Dominica No.' h/s in red at lower left. Fine. Cat £844 on cover.	200.00
396.	1913 cover to U.S.A. with 1d (3) tied by New York Paquebot cds's plus two 1935 covers to U.S.A. each with 2/6d tied by New York Paquebot duplex and with S.S. Scanmail Posted at Sea cachet in red. (3)	30.00
397.	1923-33 issue: colour trial of 1d in black and purple on yellow. Perf 14 on wmkd Mult CA upright paper, fine, part o.g. Colours used for the 3/- value. Ex Nabarro. (Photo)	200.00
398.	1923-33 Mult Script CA set to 4/- plus Mult CA 5/- all in blocks, mostly with marg. plate nos. Very fine and impressive. Cat £553.	200.00

DOMINICAN REPUBLIC

399.	1866-74 laid paper UN real (SG6), (Sc7), 2-3 margins cancelled by red 'C86' obliterator, v.g.u. (Photo)	30.00
400.	1917 cover to New York with 5c tied by fine 'SAN P. de MACORIS' large cds. Fine.	16.00

GRENADA

See also lots 144-7, 226 and 232.

401.	Good selection of Chalon 1d's from diff. issues with variety of shades, unused and used. Condition fair to fine. Requires careful checking. (25)	50.00
402.	Useful range with few Chalons, selection collected for postmarks and two better covers - 1898 to England with 1883 4d and 1904 p. stat. 2d reg. env. to London with 1d tied by Grenville cds. (30 + 3 covers)	30.00
403.	POSTMARKS: good selection of Parish 1st and 2nd type letters incl. A, B, C, D and E 1st type double circles on Chalon 1d's also 'B' on 1883 1d and 'F' on 1875 1/-. Second type single circles on 1883 vals incl. 'F' in blue on 2/6d. An elusive assembly. (14)	60.00
404.	POSTMARKS: selection of later Parish cds cancels incl. fine 1929 Carriacou, 1945 Hope, 1945 Mt Rose and 1945 St Davids also piece with 1916 Official Paid cds. Very useful. (15 + 1 cover)	25.00
405.	POSTMARKS: 1906-14 selection of Parish postmarks, all full strikes on piece, incl. fine Carriacou, Crouchu and St Patricks. (13)	40.00
406.	POSTMARKS: small selection on QV-GV range incl. second type Parish pmks. 'C,' 'D' and 'F' also first type 'D' on 1883 2/6d and part St Patricks cds on QV 1d. (12)	7.50
407.	POSTAL STATIONERY: selection incl. 1946 formular air letter with 2/6d used to Jamaica, GVI 6d air letter mint and used, GVI 3d reg. env. unused (flap stuck down) and few QEII wrappers. (9)	20.00
408.	1858-60 G.B. Used in: 1d rose red with fine 'A15' cancel (SG Z1), fine apart from few trimmed perfs. (Photo)	80.00
409.	1875 large star, perf 14, 1/- with inverted 'S' in 'POSTAGE' (SG13c), f.u. Cat £500. (Photo)	140.00
410.	1875 large star, perf 14, 1d green (SG14) strip of 4 showing dramatically mis-aligned vertical perfs, fresh, most o.g. (From the Mayfair find). (Photo)	75.00
411.	1878 small star s/ways, intermediate perf 15, 6d deep vermilion (SG17), fine and fresh unused. Cat £750. Ex Towers. (Photo)	180.00
412.	1883 Crown CA, 1/6d (SG30a), comp. left pane of 60 with full margins, fine mint. An important piece showing the unusual arrangement of the sheet in tete beche pairs.	80.00
413.	1888-91 Revenue stamps surcharged, 4d on 2/-, 4mm spacing (SG41), block, 3 x 2, fine o.g.	120.00
414.	1905 cover from St Vincent to 'The Manager of the Colonial Bank, Grenada' with EDVII 1d tied by Kingstown cds. On reverse a fine strike of the very rare 'SHIP LETTER GRENADA C AP 3 5' cds. (Photo)	750.00
415.	1908 Crown CA die proof of 1/- frame and duty plate on glazed card marked 'Before Hardening' and dated '26 Nov 07.' Fine. (Photo)	120.00
416.	Similar die proof of 2/- marked and dated as before. Fine..	120.00

Lot	Description	Est £
417.	1914-5 Red Cross 'One Farthing' comp. sheet of 8 labels, fine unused. Very scarce.	60.00
418.	1938-50 set to 10/- (7) with perf varieties, m.m. Incls. SG163a, all mid. on leaves. Clean and neat range. May repay careful checking. Cat £450. (53)	120.00
419.	10/- perf 12 x 13 (SG163), lower marg. strip of 6 showing plate number and imprint, usual toned gum, fine mint. A very scarce multiple. Cat £330+	120.00
420.	10/- perf 14 (SG163a) with Grenville 5 FE 44 cds, v.f.u.	20.00
421.	10/- perf 14 (SG163c) on 1950 reg. air mail cover to U.S.A. tied by GPO cds. Clean and attractive.	50.00
422.	1953-9 Script CA set to \$2.50 ex \$1.50 in plate blocks and imprint strips, most lower vals from two diff. plates. \$2.50 in two marg. blocks of 4 ascribed to pgs. of 16.11.59 and 10.10.61 and an imprint strip of 4 from 17.7.62 ptg., all u.m. Cat £230.	80.00
423.	1964-66 Block CA set to 25c (SG214-20), u.m. Cat £180. (7)	75.00
424.	Ditto, set v.f.u. Cat £60. (7)	25.00

GUADELOUPE

425. 1910 p.p.c. of St Kitts used to Denmark with 1c on picture side tied by fair strike of very scarce 'ST MARTIN' cds. A further strike at left. 36.00
426. 1949-50 small correspondence of covers to the Governor of Dominica with good array of diff. frankings, Govt. cachets and postmarks. Some smaller offices noted plus one franked with 18fr tied by Pointe A Pitre cds. 'T' h/s and oval 'BM' h/s plus 5 covers from Martinique to the same address. (29) 50.00

HAITI

See also lot 557

427. 1886 p.stat. formular card (H/G7), used to Paris with 3c tied by Port Au Prince cds. Calais a Paris arrival mark at left. Two insignificant filing holes at right o/w fine. Very scarce. 250.00
428. 1889 p. stat. formular card (H/G9), used to St Thomas with 3c blue tied by Jacmel cds. St Thomas arrival mark on reverse. Fine. 200.00

JAMAICA

See also lots 249, 286 and 534

The following section of lots form the first portion of Ken Bolton's collection. All lots are neatly written up and mounted on FG leaves and offered in appropriate sections intact.

429. **OBLITERATOR POSTMARKS:** a fine collection commencing with 1859 mourning cover with GB 6d tied by AOI duplex (worm hole affects stamp) 'A38' type N on CC 1/4d and 2d, 'A39' on 1d key plate, 'A41' (5), 'A44' (5), 'A48' on Pine 3d and 4d, fine 'A54' type H on Pine 6d on piece and type J on CC 2d, 'A58' on 1 1/2d Postal Fiscal (unrecorded by Topaz), 'A60' type M on CC 1d and CA 1/2d, 'A63' (3), 'A70' (3), 'A76' on tying 2 1/2d to 1892 cover to Glasgow, 'A80' on CC 1d and 2d, 'A81' on CA 1/2d, 'A82' (3), 'A83' on CA 1d, 'E06' on CC 1d, 'E30' on CC 1/- and CA 2d, 'F80' on CC 1d, 'F81' (4), 'F95' (10), 'F96' (4), 'F97' on CC 1d, 'F98' on CA 1/2d, 'G14' (2), 'G15' (3), 'G16' (2), scarce '196' on CA 1d, '199' (2), '201' (5), '617' (5), '622' (2), '640' (7), '642' on CC 2d, '647' (2), fine range of 'B' cancels (6) and two 'E's on CC 1d's. Many fine strikes throughout. (370 + 2 covers) 1000.00
430. **RAILWAY CANCELLATIONS:** useful range with good strikes noted of Buff Bay, Green Vale, Kingston, Muggotty, Montpellier, Spanish Town and scarce part strikes of Kingston Baggage Dept and red Montego Bay. Also examples of later T.P.O. cds. (23) 60.00
431. **REGISTRATION MARKS AND LABELS:** Collection of mostly GV covers plus a wide range of different reg. labels on piece. Many diff. village offices noted. (15 covers + labels) 75.00
432. **SLOGAN POSTMARKS:** mounted on card with useful GV and GVI with scarcer noted incl. two diff. types of Princess Alice Appeal and later issues to 1970 many on full cover. (31) 25.00
433. **SQUARED CIRCLE CANCELS:** small range on mostly QV issues incl. good s/ways strike of 'JAMAICA EXHIBITION FE 13 91' on 1d. (14) 20.00

311



312



347



348



349



345



327



333



346



367



368



350



363



364



365



366



374



408



409



491



393



399



414



415

26 NOV. 07

BEFORE
LOADING

375



389



397



538



634



621



632



262

3
4
Friday 20th

NYE 45

AGENCY OF
THE CANADIAN BANK OF COMMERCE
Exchange Place and Hanover Street
NEW YORK 5, N. Y.

VIA AIR MAIL

Mr. R. G. E. Stillwell
c/o P. O. Box 181
Wall Street Station
New York 5, N Y

331



325



Mrs. Creelman
Toronto

B. C. Canada.

1675 Laurier Ave.

C. Mrs. W. J. Downing 5611 Laboum Street

HAMILTON
Bermuda
R No. 267



496



497



509



510



511



512



492



493



514



521



522



520



505



Lot	Description	Est £
434.	STREET LETTER BOXES: good selection incl. diff. types of Kingston mark. 4 on cover or card and one example of Port Antonio. (13 + 4 covers)	25.00
435.	TEMPORARY RUBBER DATESTAMPS: selection of 1950-60's covers incl. fine strike of 'Duff House' on 1951 cover. Clean and attractive. (15 covers)	30.00
436.	UNCLAIMED MARKS: selection of diff. village 'Unclaimed' s/l marks on neat, small size 1960 commercial covers from Mandeville. (7 covers + 3 part covers)	15.00
437.	UNPAID AND TAX MARKINGS: 1902 QV 1/2d postal card used to Glasgow Kingston cds and fine 'T' in triangle also 'T' marks on three QEII pieces. (4)	8.00
438.	POSTAL STATIONERY: extensive mostly unused, well written up collection commencing with 1877 Penitentiary issue 1/2d, 1d and 3d fine unused. Selection of second provisional issue with diff. frame types and diff. papers all unused (24). Later postal cards incl. ovpt. varieties on 1879 UPU provisional and a fine array of GVI issues (17 incl. Specimen ovpts.) Also some wrappers, air letters and two reg. envelopes. Condition fine. (163)	500.00
439.	PERFINS: United Fruit Company perfins on GV 2d View and GVI 3d, 4d, 1/- (2), 2/- and 5/-. Scarce. (7)	15.00
440.	REVENUES- DOCUMENT STAMPS: good range of the GB Marine Policy stamps ovptd. 'Jamaica' compr. 1899 issue £4 and 1905-55 issue vals to £1 with diff. dies noted. (20)	20.00
441.	PICTURE POSTCARDS: selection of mostly EDVII-GV cards incl. fine col. view of 'Constant Spring Hotel after the 1907 earthquake plus views of Montego Bay and Port Antonio. (23)	25.00
442.	Elder & Dempster Shipping Co set of 6 R.M. Steamers inset with views of Jamaica still in orig. booklet with col. view on outer entitled 'Beauty Spots in the West Indies' and incl. details of routes and coastal timetable.	30.00
443.	1947 Paris Congress of the U.P.U. souvenir booklet cont. Jamaica 1938-52 set to 10/- plus Victory pair.	8.00
444.	Balance of the consignment incl. few maritime covers, postmarks and revenues. (16 + 8 covers)	20.00
445.	FIRST FLIGHT COVERS: 1930 (1 Dec) New York - Kingston with two special cachets. (AAMC # F5-65b)	10.00
446.	1930 (3 Dec) Cristobal Canal Zone - Jamaica with special cachet. (F5 - 68a)	25.00
447.	1930 (10 Dec) Kingston - Havana, Cuba via Miami with large circular cachet. (F5 - 66c)	16.00
448.	1930 (10 Dec) Kingston - St Lucia via Miami and Jamaica with special cachet. (F5 - 66c)	30.00
449.	1930 (10 Dec) Kingston - Antigua via Miami and Jamaica with special cachet. Only 36 flown. (F5 - 66c)	40.00
450.	A similar lot.	40.00
451.	1930 (10 Dec) Kingston - Barbuda via Miami and Jamaica. Fine Barbuda b/stamp. (F5 - 66c)	40.00
452.	1930 (10 Dec) Kingston - San Juan, Puerto Rico with special cachet. (F5 - 66c)	15.00
453.	1930 (10 Dec) Kingston - British Guiana via Miami with special cachet. (F5 - 66c)	25.00
454.	A similar lot.	25.00
455.	1930 (10 Dec) Kingston - Trinidad via Miami with special cachet. (F5 - 66c)	30.00
456.	1930 (10 Dec) Kingston-U.S.A. via Miami with special cachet. Few tone spots. (F5 - 67)	7.50
457.	1930 (10 Dec) Kingston - Montreal, Canada with special cachet. (F5 - 67)	10.00
458.	1930 (10 Dec) Kingston - London via Miami with special cachet. (F5 - 67)	10.00
459.	Three similar covers to England with different frankings.	20.00
460.	1930 (10 Dec) Kingston - Cristobal, Canal Zone with special cachet with Miami blanked out and Canal Zone inserted.	20.00
461.	A similar lot.	20.00
462.	A similar cover but with minor toning.	10.00
463.	1931 (10 Feb) reg. Kingston - Maturin, Venezuela with special cachet. Only 19 flown. (F5 - 89a)	50.00
464.	1932 (8 Aug) Kingston - San Juan, Puerto Rico with special boxed cachet. (F6 - 143)	20.00
465.	1932 (8 Aug) Kingston - Puerto Plata, Dominican Republic with special cachets. (F6 - 143b)	20.00
466.	1939 (1 Jun) Kingston - London with special cachet per Pan Am.	20.00
467.	A similar lot.	20.00
468.	A similar cover but without cachet. franked with 3d and 1921-9 2/-.	10.00
469.	1946 (5 Sep) Kingston - London via Bermuda per Speedman with special cachet.	7.50
470.	1947 (3 Nov) Kingston - Cayman Brac by Cayman Island Airways. (Not flown)	20.00

Lot	Description	Est £
471.	1948 (2 Jun) Kingston - Cayman Brac per Caribbean Int. Airlines via Grand Cayman.	60.00
472.	1948 (2 Jun) Kingston - Grand Cayman. Georgetown b/stamp.	60.00
473.	1949 (1 Apr) Kingston - Miami per Br Caribbean Airways with special boxed cachet.	8.00
474.	1950 (1 Apr) Kingston - Miami per B.W.I.A. with special oval cachet.	8.00
475.	1950 (2 Apr) Kingston - Nassau per B.W.I.A. with special boxed cachet.	12.00
476.	1950 (8 Apr) Kingston - London per B.O.A.C. with special boxed cachet.	12.00
477.	1952 (12 Mar) Montego Bay - London per B.O.A.C. Stratocruiser.	8.00
478.	1954 (23 Jan) New York Montego Bay and return per B.O.A.C. on illust. cover and pilot signed.	16.00
479.	COVERS: selection incl. 1911 p. stat. EDVII 1/2d wrapper with 1/2d Arms used to Belgium. 1919 reg. cover to U.S.A. with 6d tied by oval Reg. ds and 4 1949 local covers with diff. T.R.D. cancels. (7)	20.00
480.	MARITIME COVERS: selection incl. 1935 to Jamaica with U.S. 5c tied by 'Mailed at Sea S.S. Pastores Colombian Line' cachet. 1936 to England with large two line 'Ocean Mails S.S. Cavina' cachet and 1937 with boxed 'Ocean Mails Ex S.S. Bayano' cachet. (4)	30.00
481.	POSTAL STATIONERY: neatly written up collection on leaves incl. scarce 1877 Penitentiary issue 3d card unused and second type provisional 1/2d and two 3d's unused. Useful later postal cards incl. 1897 1/2d used with good SANTA CRUZ cds and two 1/2d cards with Street Letter Box cancels plus unused GVI 1d card. Also a few reg. envs., wrappers and air letters. Fine condition. (30)	100.00
482.	POSTAL STATIONERY: mint and used assembly of postal cards with 1877 Penitentiary issue 1/2d and 1d used, 1877 Floriate types compr. 1/2d, 1d and 3d (4) unused and good range of later QV cards. EDVII 1/2d reply card ovptd. Specimen also top half used with fine Buff Bay cds plus few GV and QEII issues. Condition mostly fine. (40)	120.00
483.	POSTMARKS: neatly written up collection on leaves with some numeral obliterators and range of later cds types to 1900 with useful covers noted incl. 1866 with Falmouth cds, 1891 from England with Little London arrival mark and QV 1/2d p. stat. cards with Alley and Lucea cds's. Clean and attractive. (75)	75.00
484.	POSTMARKS: range written up on leaves plus few covers incl. Birmingham type pmks. and good selection of registered cancels with 1890 Official 1d block 6 x 2 cancelled by RI type. Useful lot. (25)	25.00
485.	POSTMARKS: QV-GV range with a few obliterators, useful village cds cancels, Anchovy and Manchioneal squared circles, 'Street Letter Box Port Antonio' cds on 1 1/2d Contingent and scarce part strike of 'BUSHY PARK' blue railway cds. (40)	15.00
486.	POSTMARKS: very good selection incl. fine strikes of scarce obliterators, 'A63' on CA 2d, '193' on 4d, '617' on 1d key plate (2), 'G14' on 1d Falls and 'B' on 2d key plate. Scarce 'Jamaica Exhibition Post Office' squared circle ds on 1d Official and TPO and Railway cancels plus few covers incl. 1895 to England with 1/2d and pair of 1d's tied by Falmouth squared circles. (111 + 8 covers)	75.00
487.	POSTMARKS: fine range of village cds cancels on QV-GVI issues with strength in the many fine strikes of early single circle cds's on QV issues with fine examples of Petersfield, Port Maria, Priestmans River, Saint David, Salt Cut and Shooters Hill. Scarce strikes of double circle cancels in blue ink of Retreat and Montego Bay. Many scarcer offices noted plus fine strikes of Street Letter Box Port Antonio and Montego Bay. (360)	120.00
488.	1712 (24 May) EL to Sir Charles Long, London endorsed 'P the Elton Galley' and rated 5d. Bishop mark on reverse. Fine and scarce. <i>A very early letter sent after the failure of the Dummer packet service.</i> Ex Patrick and Swarbrick. (300)	300.00
489.	1840 (30 Aug) cover to London with fair strike of 'BATH JAMAICA' double arc cds in black on reverse (P2a), also London ds. Rated 1/-. Ex Swarbrick. (30)	30.00
490.	1847 (29 Mar) EL to Scotland with fine strike of 'BATH JAMAICA' double arc cds in blue on reverse (P2a), also London, Edinburgh and Aberdeen cds's. Rated 1/2d. Fine and scarce. Ex Swarbrick. (100)	100.00
491.	G.B. USED IN: 1859-60 4d rose horiz. pair with fine full 'AO1' cancel and part of cds (SG Z9), f.u. (Photo)	36.00
492.	1d rose-red strip of 4 cancelled by 'A28' cancels (SG Z20) (Annotto Bay). Small perf faults but a rare multiple. Cat £1200. (Photo)	250.00

Lot	Description	Est £
493.	4d rose horiz. pair cancelled by 'A28' cancels (SG Z21). One affected by vert. crease. Scarce. (Photo)	Cat £140. 36.00
494.	Ditto, 4d on large piece tied by 'A28.' Good Annotto Bay 1859 JY 4' cds and Kingston cds at left. Attractive.	50.00
495.	6d lilac cancelled by 'A28' cancel (SG Z22). S/ways strike on wing margin copy with perf faults at base. Cat £225. (Photo)	30.00
496.	1860-3 Pines issue: 3d green (SG3), marg. block of 4 with diagonal pen lines (applied as from remainders). Fine and fresh o.g. (Photo)	200.00
497.	1870-83 Crown CC 2/- venetian red (SG14), lower right plate 1 block of 4, faint toning in margin, fresh, most o.g. Scarcer multiple. (Photo)	120.00
498.	1883 p. stat. 1/2d postal card (H/G11a) h/stamped 'SPECIMEN' 24 x 3.5mm in unserifed caps. Fine.	30.00
499.	1890 2/2d on 4d with variety 'PFNNY' for 'PENNY' (SG30c), fresh o.g.	20.00
500.	1898 piece with good large oval 'H.M. Service FREE Supt Insp Schools' cachet, pair of 2/2d's tied by Kingston cds and Turks Islands arrival mark. Stamps applied as Free h/s only valid in Jamaica. Ex Patrick.	10.00
501.	1903 Arms Issue: set of plate proofs cut from the working day book, ex D.L.R. archives, dated Aug., Sep., and Nov 1903 compr. vignette and frame and duty plates of 1/2d, 1d, 2/2d and 5d. Fine and important piece. Ex Swarbrick. (Photo)	700.00
502.	1905 p.p.c. with 1d Arms (3) at right with fine strikes of large double circle 'JAMAICA RAILWAY ANNATTO BAY FEB 20 1905' cds's in blue. Card unaddressed so status uncertain.	50.00
503.	1911 reg. cover to Finland with EDVII 2d grey (SG57) and 2/2d Arms tied by fine Spanish Town cds's. Clean and attractive. Very scarce franking.	80.00
504.	1914-18 Jamaica War Stamp League grey covered booklet cont. two panes of 6 of the Red Cross aeroplane stamp ovptd. 'Jamaica Half Penny' stapled at left. Fine and very scarce.	120.00
505.	1916 War Stamp (Sep-Dec) 3d marg. block of 6 one with variety 'S' in 'STAMP' omitted (SG72b), variety u.m. Cat £275. (Photo)	120.00
506.	1921-7 Script CA 1/2d lower part sheet 6 x 4, with margins on 3 sides showing plate no. 3, one with Bow flaw (SG89ab), u.m.	15.00
507.	1921-9 Script CA 2/2d (SG95a), with inverted wmk. variety, u.m.	10.00
508.	1948 Royal Silver Wedding pair (SG 143-4), f.u. Cat £45. (2)	15.00
509.	1964 definitive issue: 1/2d and 5/- imperf plate proofs in the issued colours on wmkd. paper. Fine. <i>These are the only two values recorded to date in this state.</i> (Photo)	200.00
510.	POSTAL FISCALS 1865-71 issue: stamp size die proof in pink on glazed card. Very rare. (Photo)	160.00
511.	1855-74 issue: cut down die proof of 1/2d in black on glazed card. Fine and rare. (Photo)	120.00
512.	A similar cut down die proof in blue on glazed card. Fine and very rare. (Photo)	160.00
513.	1858 issue: cut down die proof of 10/- in black on glazed card. Slightly rubbed. Very scarce. (Photo)	140.00
514.	1/- rose (SG F7), marg. plate 3 block 3 x 2, each h/stamped 'SPECIMEN.' Some perf faults and hinge reinforcement on reverse but attractive and very scarce. (Photo)	200.00
515.	TELEGRAPH STAMPS 1879 die proof of 3d on glazed card marked 'After Hardening' and dated 'May 27 1879.' Fine. (Photo)	180.00
LEEWARD ISLANDS		
516.	REVENUES: Used selection of FEE stamps compr. QV dup. vals. to £1. EDVII to 2/- (2) and GV to 5/-. Variety of cancels noted. Cat £397 (Barefoot) (15)	75.00
517.	1892 p. stat. 1d card used to London with added 1890 1/2d tied by 'A07' cancel with Dominica cds at left, endorsed. 'Via Antigua.' Antigua b/stamp. Fine.	36.00

Aug 19. Aug 22 Aug 26 Sept 1
 240 leads each 240 leads each.

64ba

24ba

Sept 11. 03
 24ba 24ba



Nov 27
 240 leads
 + 24ba



Jan 14. 04

513



515

May 27 1870
 AFTER HARDENING



Lot	Description	Est £
518.	1894 p. stat. 1d envelope (H/G1a), used to Montserrat with light Dominica cds and fine Montserrat cds on reverse. Appears to be commercial.	40.00
519.	1912-22 Mult CA, 3d white back (SG51a), block of 4, fine mint. Cat £160.	60.00
520.	1921-32 Script CA 10/- (SG79), block of 4, pos. 43-44, 55-56 with flaw 55. Minor perf separation, fine mint. (Photo)	200.00
521.	1938-51 10/- (SG113), Oct '38 ptg., St Kitts 3 DE 48 cds, v.f.u. (Photo)	60.00
522.	10/- (SG113a), Mar '42 ptg., on piece cancelled by light strike of 'BARBUDA JY 20 45' cds. Frame colour slightly rubbed at lower left, f.u. Cat £225. (Photo)	75.00
523.	£1 perf 14 (SG114b), Dec '43 ptg., marg. block of 4, pos. 9-10, 21-22, with flaws 10a and 21e (trace), u.m.	120.00

MARTINIQUE

524. 1829 EL from Fort Royal to Paris with fair s/l 'MARTINIQUE' also boxed 'Pays D'Outremer Par Nantes and Paris cds. Two disinfection slits on address panel. Rated '8' Fine. 75.00
525. 1900 reg. mourning cover to France with 5c and 50c tied by 'SAINT PIERRE CHARGEMENTS' cds. Boxed 'R' h/s and octagonal 'Colon A St Nazaire' ds. Fine. 60.00

MONTSERRAT

See also lot 380.

526. 1858-60 G.B. Used in: 4d rose (SG Z2), a good s/ways strike of the 'A08' on a rather faded copy, imperf at left. Very rare. (A certificate needs to be obtained for this item and an extension will be granted) (Photo) 1000.00
527. 1925 p.p.c. with fine view of 'H.R.H. The Prince of Wales, inspecting the Montserrat Defence Force on his visit to the island, Sept. 27th, 1920,' with 1/2d at top right tied by light cds. Pub. C.E.E. Browne. No message or address. Fine. 25.00
528. 1936 cover to England with 1/2d tied by rare strike of 'HARRIS * no 14 36' cds. Creases at base hardly detract from a rare commercial village cover. 120.00
529. 1938-48 perf 13, 1d coil join strip of 10, gum yellowing, u.m. 20.00

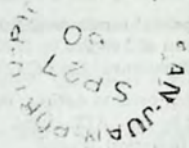
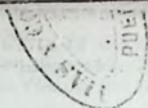
NEVIS

530. Collection of Medicinal Spring issues on leaves, mostly unused with scarcer vals. noted commencing with 1861 issue including examples on blued paper and scarce unused vals. 1866-76 1d, 4d and 1/- (3) fresh unused some with o.g. and 1876-8 litho set to 1/- with some shades unused, some with o.g. Condition fair to fine. S.T.C. £3657. (32) 300.00
531. FORGERIES: useful selection mostly of Medicinal Spring vals with several different types noted plus scarce Boston Gang litho forgeries of 1/2d and 4d key plates. (16) 36.00
532. 1861 issue: reprinted plate proof of the complete sheet of each value in black on wove paper. One of 50 numbered sets made in 1931. The 4d die previously defaced by chisel cuts. Each sheet mtd. with overlay to show plate scratches to identify sheet positions. Fine. (4 sheets) 160.00
533. 1879-80 Crown CC, 1d (2) and 2/2d plus 1882-90 set to 1/- ex 6d green but with some additional shades incl. 1/- also 1882 Revenue 1d, 4d and 6d, all unused/m.m. Cat £923. (20) 100.00

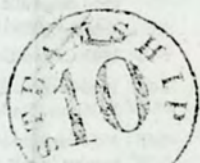
PUERTO RICO

534. 1860 (27 Sep) EL from Arecibo to New York with good 'PAID AT SAN JUAN PORTO RICO' crown circle (SG CC1) also San Juan double arc cds, Kingston Jamaica cds and 'Steamship 10' h/s. Fine. (Photo) 360.00
535. 1873-7 G.B. Used in: Aguadilla - 6d (plate 13) cancelled by fair 'F84' (SG Z8). Few toned perfs but rare. (Photo) 50.00
536. Mayaguez - 1d pair (plate 154) cancelled by fine 'F85' (SG Z33), perf. faults, but attractive. 10.00
537. San Juan: 10d with fine upright strike of 'C61' (SG Z102), v.f.u. Cat £190. (Photo) 75.00

New E Mail address: Pennymead@aol.com



D. Lammy



Mr. David F. Lammy Recd.

Inguistas



New York

ST CHRISTOPHER

538. Engraved essay for St Kitts Postage on wove paper. Five examples in black (2), blue, greenish blue and sepia. One in black with toning, others fine and fresh. Most attractive. *Possibly essays prepared by Perkins Bacon circa 1860 but nothing definite is known on these proofs.* (Photo) 200.00
539. 1761 EL to England with Bishop mark on reverse. Endorsed 'P the Lancaster Capt Mann' and rated 7d and finally 'In all 1/3' for double letter rate. Worn at folds. Probably ex Robertson. 140.00
540. 1863 (27 Apr) part cover (front and part back) to London with fine 'ST KITTS PAID' h/s in red (RL23) also London Paid cds and St Kitts double arc on reverse. Rated '11' and endorsed 'P Steamer La Plata.' Attractive and very scarce. 140.00
541. 1866 (11 Aug) small envelope to U.S.A. with good strike of very scarce small 'ST KITTS PAID C AU 11 66' cds in red (unlisted by RL). New York Steamer cds and St Thomas b/stamp. Endorsed 'Via Havana.' 200.00
542. 1885 'Halfpenny' surch. on half 1d (SG23) left and right half, one with inv. ovpt. together with Leewards 1902 surch. set of 3 all tied by St Kitts A12' duplex cancels on 1910 cover to Roseau, Dominica. Light tone spotting, still attractive. Cat £923 on cover. 120.00
543. 1890 (27 Mar) cover to Antigua, redirected to Basseterre with rare use of Antigua 1884 perf 12 1d carn red (SG24) tied by fine 'A12' cancel. 'St Kitts' cds at right. Fine. (Used during Feb-Mar while there was a shortage of 1d stamps) (Photo) 450.00

ST KITTS NEVIS

544. POSTMARKS: attractive collection commencing with a useful array of Leeward Is. issues with 'A12' or 'St Kitts' cds cancels then a fine assembly of the scarce village cancels with the following noted:- 'A' code of Anguilla on GV 1d, fine 'Anguilla Valley' cds on Jubilee 1½d, 'CA' code of Cayon on QV ½d, EDVII 1d and GV 1d and 2d plus examples of later extended cds on GVI and QEII issues. Fine extended strikes of 'Old Road' on GV-GVI issues (13) and 'SP' code of Sandy Point on QV 1d (3), EDVII 1d (2) and GV 1d (3) plus good range of extended cds's on GVI and QEII issues plus examples of Dieppe Bay and Nevis. Offered intact. (131 + 1 cover) 120.00
545. 1903 Crown CA 2/- (SG8), obliterator cancel, f.u. plus 1905-18 1d pair cancelled by fine Nevis cds. 7.00
546. 1936 cover to England with Jubilee 2½d tied by fine boxed 'Hamburg-Amerika Linie M.S. Cordillera 19 JAN 1936' h/s. Barbados cds at left. Some perf toning. 36.00
547. 1951 reg. cover to R. Wells, England with University pair tied by good strikes of DIEPPE BAY cds. Reg. number in m/s. 6.00
548. NEVIS: 1984 Leaders of the World, British Monarchs issue: Format International imperf progressive colour proofs all in blocks of 9, u.m. (585) Reserve 140.00

ST LUCIA

See also lots 224, 313 and 328.

549. Fine used collection mtd. on leaves with issues to 1951. Apart from a few earlyies (not incl. in the cat. value) the collection has a good degree of completion from 1883 to 1951. Noted are 1904-10 5/- (SG76), 1912-20 5/- (SG88) pair on piece, 1921-6 set and 1936 Pictorial set, all v.f.u. Cat £900. (180) 250.00
550. Small used selection on stockcard with three forgeries of QV issues noted. (27) 6.00
551. POSTMARKS: collection of Maritime cancels on St Lucia EDVII-GVI range. Noted are octagonal 'Cayenne a Fort De France ds and circular 'Paquebot St John' cds. (28) Ex Bartlett. 16.00
552. 1824 (13 Jan) EL to London with good strike of scarce 'ST LUCIA JA 13 24' fleuron just across flap on reverse. Also London ds. Rated 2/2d. Clean and attractive. *Second page only of very interesting letter from Wesleyan missionary who recounts difficulties of establishing a mission on the island.* 140.00
553. 1863 Crown CC, perf 12½, 6d emerald green (SG8) block of 4, fresh o.g., hinge rems. A rare multiple. (Photo) 450.00
554. 1897 p. stat. 1d card used to England with first type 'A11' obliterator. Message from Soufriere so possibly implies transfer of use of this canceller from Castries. Slightly soiled. 40.00

Lot	Description	Est £
555.	1897 reg. cover to England with 1891-8 3d (SG47) strip of 3 cancelled by St Lucia cds's. Clean and attractive.	50.00
556.	1898 reg. cover to Barbados with 1891-8 ½d and pair of 2d's tied by St Lucia cds's. Barbados b/stamp. Clean and attractive. Scarcer inter island cover.	60.00
557.	1899 reg. cover to Haiti with ½d and 4d (SG43, 48) tied by St Lucia cds's. 'R' in oval h/s, boxed reg. h/s in red and on reverse, fine-St Thomas cds, Jacmel and Port au Prince cds's. Slightly cut down at right. Very scarce inter island reg. mail.	75.00
558.	1899 cover to U.S.A. with ½d and pair of 1d's tied by fine strikes of scarcer 'ST LUCIA S MR 25 99' cds of Soufriere. St Lucia, New York and New Haven b/stamps. Fine.	90.00
559.	1903 QV 1d p. stat. card used to England with added 1891-8 4d brown tied by Castries cds also Bermuda 1917 damaged cover with 1d tied by Ireland Island cds and 'PC Bermuda' censor mark.	16.00
560.	1905 p.p.c. sent to Martinique with EDVII 1d tied by Fort De France Martinique cds. Endorsed, 'Per RMS Yare' at left. Attractive view of Castries harbour.	36.00
561.	1905 p.p.c. sent to Paris with EDVII ½d on picture side tied by octagonal 'CAYENNE A FORT DE FRANCE L.C.' ds. View of Castries town and harbour.	40.00
562.	1905 cover to London with pair of 1d's tied by boxed 'Posted on Board' h/s (applied at Barbados). Also Barbados and London cds's.	40.00
563.	1907 p.p.c. used to Paris with EDVII ½d on picture side tied by fine octagonal 'BORDEAUX A COLON L.C. No 2' ds. View of Chausee Road, Castries. Fine.	40.00
564.	1912 p. stat. 2d reg. envelope (H/G3). Two examples used to England, first in 1921 with 1d, second in 1924 with torn 3d, both tied by Castries cds and with boxed St Lucia reg. h/s. One a little soiled.	18.00
565.	1915 (circa) col. p.p.c. with ½d tied by boxed 'PAQUEBOT' h/s, sent to Adelaide, S. Australia. View of workers coaling ship alongside Castries wharf. Fine.	30.00
566.	1923 reg. cover to Rev. Iremonger, England with 1912-20 Die II 3d (SG82b) horiz. pair tied by Castries cds. Boxed reg. h/s in purple at left. Fine. Cat £110 on cover.	40.00
567.	1924 reg. cover to Rev Iremonger, England with ½d, 1d, 2d and 2½d tied by scarce 'LABORIE' cds's. Boxed reg. h/s in purple at left. Clean and attractive.	60.00
568.	1924 p. stat. 3d reg. cover, size H (H/G4a), used to R. Wells, England with 1938-48 1d, 2½d and 3½d in blocks of 4 and singles tied by oval Registered Castries ds. Clean.	20.00
569.	1927 cover to Scotland with marg. plate 11 copy of 2½d orange (SG97) tied by Castries cds. Fine and scarce franking. Cat £120 on cover.	50.00
570.	1933 cover to England with 1921-6 2½d, 3d deep purple/yellow, 4d, 6d and 1/- (SG98, 100a, 101-3) tied by Castries cds's. Fine.	20.00
571.	1936 Pictorial issue: die proof of the central vignette with view of Port Castries, as used for the ½d, 2d and 4d vals. On white wove paper affixed to printer's record sheet and endorsed 'Appd. for Dies 14 21/6.' Fine and rare. (Photo)	300.00
572.	Die proof of the vignette of the 2d on white wove paper affixed to printer's record sheet. Fine. (Photo)	175.00
573.	2/6d, 5/- and 10/- (SG122-4) on reg. F.D.C. to London. Fine and attractive.	75.00
574.	1938-48 complete coil rolls of 480 together with printed leader for ½d and 1d in both perms. Fine and very scarce. (4 rolls)	Reserve 150.00
575.	1941 cover to U.S.A. with 1d and 1½d tied by circular 'ALCOA S.S. CO S.S. ACADIA PAQUEBOT' cachet and New York m/c also 1947 cover from Martinique with 40c tied by boxed 'Paquebot' with Castries arrival mark and 1966 cover to Canada with 3 line 'R.M.S. Carmania Paquebot Mail' cachet in purple. (3)	20.00
576.	1948 attractive illust. air mail cover with slogan, 'Freedom from Fear, from Want of Religion' used to U.S.A. with 6d tied by fine Vieux Fort cds. Scarce 'AR' in oval h/s at top left. Most attractive.	44.00
577.	1985 Life & Times of Queen Mother issue. Format International progressive colour proofs in comp. imperf. senat sheets of 50 compr. 40c and \$1.10 and 75c and \$1.75. u.m. (200)	Reserve 50.00

ST VINCENT

See also lots 107, 191, 195, 212 and 221.

578. MARITIME MAIL: selection incl. two 1926 covers to U.S.A. each with 1d tied by Trinidad cds and with Paquebot Trinidad cds in red, one with m/s 'Posted on Board' also 1936 to U.S.A. with S.S. Western Ocean cachet, 1937 HMS Dragon souvenir cover with cachet and 1/2d tied by cds and boxed 'Sea Island Cotton for Quality and Comfort' slogan and 1939 to Trinidad with R.M.S. Lady Drake cachet, etc. (6) 40.00
579. POSTMARKS: good selection of extended village cancels on QV-GV range. Better strikes noted of Bridgetown, Colonarie, Georgetown and Stubbs plus fair strikes of scarce Canouan and Cumberland. (31) 40.00
580. POSTMARKS: Georgetown cds on QV 1d and good 'CHATEAUBELAIR C SP 8 04' cds on EDVII 1d plus few oddments. (7) 10.00
581. REVENUES: selection incl. scarcer 1/- bright verm., 1d drab and 3d on 1d (PML 4, 9 and 10) all with forged 'A10' cancels. (9) 16.00
582. 1861 issue: plate proof of 1d in rose red, imperf on thin partly gummed paper, 3 margins. 20.00
583. 1880 small star, perf 11-12½, 1d olive green (SG29) with fine 'BAR SP 30 81' abbreviated village postmark of Barrouallie. Scarce. (Photo) 50.00
584. 1882 Crown CA, perf 14, 1d drab (SG39) selection of used copies all with 'K' abbreviated cancels also two 1885-93 1d rose red. (15) 10.00
585. 1893 (30 Jan) reg. cover to Grenada with 1892 '5 Pence' on 4d (SG59) tied by Kingstown cds. 'R' in oval at left and Grenada cds b/stamp. Light toning but scarce inter island mail. 120.00
586. 1896 (17 Feb) reg. cover to Germany with 1885-93 5/- lake (SG53) cancelled by Kingstown cds. 'R' in oval and oval Registered London ds. Fine. 80.00
587. 1902 reg. cover to U.S.A. with 1899 5d and 1902 marg. plate 1 pair tied by 'ST VINCENT A SP 17 02' cds's. 'R' in oval and reg. label on reverse. Fine. 50.00
588. 1921-32 Script CA 2/- (SG139), with light Kingstown 19 De 35 cds, v.f.u. 6.00
589. 1924 reg. cover to Rev-Iremonger, England with 6d tied by fine 'BARROUALLIE C OC 21 24' cds with scarce s/l 'REGISTERED' (applied in Barrouallie) 'R' in oval h/s and reg. label. Fine. 75.00
590. 1927 reg. cover to T. Marshall, England with 4d tied by good 'STUBBS C JU 13 27' cds. 'R' in oval and reg. label at left. Clean and attractive. 75.00
591. 1939 (26 Sep) cover to U.S.A. with 2/2d tied by Kingstown cds. 'PASSED BY CENSOR' label (Roses L1) at left. Scarce early use. 25.00
592. 1986 Queen's 60th Birthday Format International progressive colour proofs in full sheets of 25 x \$2.50 and \$8, u.m. (125) Reserve 30.00
593. GRENADINES OF ST VINCENT: 1986 Queen's 60th birthday issue: Format International progressive colour proofs in full sheets of \$4, \$6 and \$8 M.S., the M.S.'s in sheets of 4, others in sheets of 25. (116) Reserve 30.00

SURINAME

594. 1880 F/S cover to Amsterdam with 5c cancelled by '204' numeral. Fine 'PARAMARIBO 2 2 1880' cds and fine 3 line 'SURINAME OVER SOUTHAMPTON' h/s. Amsterdam b/stamp. Overall toning but scarce. 30.00

TOBAGO

See also lots 132 and 223.

595. POSTMARKS: collection with large Tobago double arc cds's on 1879 6d (2) and 1/-. Selection of small single circle Tobago cds's showing diff. code letters. Scarcer numeral cancels compr. '14' (5), '15' (3) and '16' (2). Tobago cds's on issues of Trinidad and later cds's of Scarborough and Roxborough on GV issues plus fine range of village cds's all on Victory issues on piece. (57 items) 100.00

Lot	Description	Est £
596.	1794 (5 April) EL to Scotland with faint s/l 'TOBAGO' also London and Edinburgh Bishop marks all on reverse. Rated '6' and '1/7.' Overall lightly soiled.	150.00
597.	1842 (19 Aug) EL to London with good 'TOBAGO AU 19 1842' fleuron across flap on reverse and 'KINGSTON OC 6 1842' double arc cds (Kingston on Hull, England where letter landed? If so very unusual.) Rated 1/- and endorsed 'P Steamer.' Clean.	75.00
598.	1914 cover to Monty Ward, U.S.A. with 1/2 and 1d (2) tied by light 'ROXBOROUGH B JY 2 14' cds.	40.00
TRINIDAD		
<i>See also lots 156, 160, 181, 195 and 455.</i>		
599.	MARITIME COVERS: selection incl. 1912 p.p.c. with oval 'Posted on the High Seas' cachet noted. (6)	16.00
600.	MARITIME POSTMARKS: collection incl. 'Mail Steamer Monos Route' cds on QV 1d, 'Coastal Steamer No 2' cds on EDVII 1d (2) and 'SS St Patrick' cds on piece cancelling 1d and War Tax 1/2d (2). French maritime cancels incl. two very scarce examples of anchor in dots cancel on Britannia 1d and 1/-. Selection of Hamburg Amerika Line ship cancels on GV-GVI range. Extensive range of Trinidad issues with Paquebot and Ship Letter cancels as well as cds's from other countries and a few foreign stamps with Trinidad cds's. (61 items)	90.00
601.	NUMERAL OBLITERATORS: collection mostly on Britannia issues with some scarcer noted incl. '4' type 0.2, '5' type 0.4 (2), 'T10,' '16' type 0.2, '19' type 0.2, 'T19,' '24' type 0.4 and '38' type 0.6. Strikes fair to fine. Good basis for expansion. (123)	250.00
602.	POSTMARKS: selection incl. French Paquebot cancel on EDVII 2/2d and scarcer type 5 (segmented circle) cancels of Couva and Moriah. (22)	6.00
603.	POSTMARKS: QV-QEII selection on stock leave with few numerals and some useful village cds's with 1951 PENAL skeleton cds noted. (Qty)	20.00
604.	TOO LATE CANCELS: selection on 1863-76 issues compr. 1d (7), 4d lilac, 4d grey and 6d (11). Note, there is more than one type of h/stamp and strikes are in black and red. (20)	50.00
605.	VILLAGE POSTMARKS: collection of earlier cds cancels on QV-GV ranges. A number of fine strikes noted incl. 1893 Blanchisseuse, 1899 Caura, 1895 Cunupia, 1917 Dabadie, 1902 Five Islands (part strike but rare), 1896 Manzanilla, 1891 St Marys also fine boxed 'AG. SHOW P.O.' cancelling 1/2d with 1895 Trinidad cds at left on piece. (272)	120.00
606.	VILLAGE POSTMARKS: good selection all on 1946 Victory issues, most on piece with full clear strikes. (34 items)	9.00
607.	1854 (15 Dec) cover to Kings Wharf, P. of S. with 1d dark grey (SG10) from the 8th consignment with 3-4 margins, cancelled by '2' obliterator. Fine San Fernando b/stamp.	75.00
608.	1875 (23 May) EL to Port of Spain with 1d brick red (SG8) from the 11th consignment with 4 margins tied by '2' obliterator of San Fernando. San Fernando cds b/stamp. Address panel damaged.	60.00
609.	1859 pin perf 12/4, 1d rose red (SG31), perfs on two sides, cut into at top, bold '2' cancel, v.g.u. Cat £42. 750	
610.	1862-3 perf 11/4-12, 1/- bluish slate (SG63), f.u. Cat 65.	25.00
611.	1863-76 perf 12/4, 6d, four examples each with s/l 'REGISTERED' cancel. Various shades. (4)	25.00
612.	1877 copy of 'The Queen's Own Gazette, a monthly record of Regimental Doings' addressed on top edge to a Captain in the 35th Regiment, Trinidad with G.B. 1d red tied by obliterator. Slightly cut down at top with loss of top part of stamp and few letters of address.	40.00
613.	1877 mourning cover to France with 6d (SG77) tied by Trinidad double arc cds. London Paid cds and Bordeaux b/stamp. Small opening tears and address panel a little soiled.	40.00
614.	1881 cover to Arima with 1d (SG75b) tied by '2 MY 12 1881' cds of San Fernando. Fine '7 MR 14 1881' cds of Arima at left. Opening tear at top neatly repaired. Attractive and scarce.	120.00
615.	1882 cover to Nova Scotia with 4d bluish grey tied by small Trinidad cds. Endorsed 'Per Viola SS.' Also with m/s notation at left, 'not known in walk 4 L.F.' applied by postman.	40.00

Lot	Description	Est £
616.	1884 cover to Port of Spain with 1882 1d on 6d (SG104) tied by '9' obliterator (type 0.6) of Manzanilla. Trinidad cds and good 'T9' duplex (type 0.9) at left. Fine.	90.00
617.	1896 F/S size O.H.M.S. cover to U.S.A. with 1883-94 1/2d (2) and 6d tied by Registration cds's. Slightly cut down at right not detracting from appearance. Scarcer franking.	20.00

TRINIDAD AND TOBAGO

618.	1923-45 Postage Due 5d, 6d, 8d and 1/- (SG D22-5), in horiz. strips of 3, one 1/- with variety sloping fraction bar, u.m. Cat £420+ (Photo)	200.00
619.	1935-7 perf 13 x 12 1/2 1c and 2c coil join pairs, fine u.m. (4)	20.00
620.	1947 folding Colonial Surveys map of the islands. 13 x 15"	6.00

TURKS AND CAICOS ISLANDS

621.	1867 issue: reprinted die proofs of the QV head die produced by Perkins Bacon circa 1910 in orange, orange-brown, carmine, rose carmine and green on wove paper. Very attractive. (5) (Photo)	200.00
622.	1881 setting 5, 'h' on 1/- lilac with variety, no bar, (SG12a), a top marg. copy confirming this as setting 5, fine and fresh o.g. Imperf at base. Cat £475. (Photo)	160.00
623.	Setting 2-6, '4' on 1/- lilac (SG45), fresh o.g. Cat £375. (Photo)	180.00
624.	'4' on 1d (SG48). A forged '4' surcharge and forged 'TI' postmark. Fine. (1996 BPA Cert)	12.00
625.	1893 cover to Baltimore with 1893 setting 2 1/2d on 4d (SG67) and diagonal bisect of 4d grey (SG57a) tied by 'TI' cancel with 'Turks Islands JU 25 93' cds to left. Endorsed 'Per S.S. Saginaw and with New York b/stamp. One of only two bisect covers recorded. (1969 B.P.A. Cert.) (Photo)	3000.00
626.	1897 cover to England with 1889-93 1d crimson lake strip of 3 one with neck flaw (SG62c) tied by 'TI' cancels. Turks Islands cds below. Fine.	90.00

VIRGIN ISLANDS

627.	FORGERY collection of the classic issues incl. scarce engraved forgeries by Oneglia of 1866 1d and 6d. Different types of litho forgeries of 1d, 4d, 6d and 1/-, latter with and without solid framelines plus scarce litho forgeries of QV D.L.R. 1/2d (3), 1d (2) and 2/2d (2). Seldom offered. (62)	250.00
628.	1828-49 small correspondence to John Cuthbertson in Scotland compr. 1828 EL with two line 'TORTOLA 21 FEB 28' h/s. 1833 with two line 'TORTOLA 2 DEC 35' h/s. 1841 with similar h/s of 2 MAR 41.' 1844 EL with arrival marks only and 1849 with damaged strike of 'TORTOLA 30 SP 1849' double arc. Condition poor.	Reserve 180.00
629.	1830 cover to London with fine two line 'TORTOLA 6 AUG 30' h/s. Rated 2/2d. Opens out well. Clean. Small piece removed where seal had been. Ex Fredrick.	250.00
630.	1866 issue: 1d plate proof in green on thin wove paper with 4 good margins. Light thin not affecting appearance and light central tone spot. Scarce. (Photo)	30.00
631.	1867-70 issue: plate proof of 4d brown rose on pink paper, a scarce corner marg. copy. Small light corner thin. Fine appearance. Rare. Ex Fredrick.	80.00
632.	Plate proof of 4d brown rose on white paper, imperf with large margins. Minor thin in margin only. Fine. (Photo)	65.00
633.	4d lake brown on buff paper (SG17), comp. sheet of 25 with full margins. Shows flaws at pos. 11, white flaw to right of name tablet and pos. 25, defective 'A' in 'Islands.' Light crease through bottom row and minor gum tone spots. Fine and fresh. Very scarce multiple. (Photo)	600.00
634.	1880 postal stationery issue: 1879 stamp size die proof of 'Penny Halfpenny' stamp die for postal card issue, in black on glazed card in sunken mount. Fine and scarce. Ex Fredrick. (Photo)	150.00
635.	1899 Crown CA, set to 5/- (SG43-50) ovptd. Specimen. 1/- with faults, fresh o.g. (8)	50.00
636.	1900 reg. cover to Germany with 1899 5/- (SG50) tied by light obliterator cancel. 'Virgin Islands' cds and London ds plus 'R' in oval all on front. Clean.	100.00
637.	1901 p. stat. 1d envelope (H/G 1a), used to Germany with 1899 1/2d and 1d (3) tied by Road Town JA 22 1907 cds's. Fine.	70.00



Lot	Description	Est £
638.	1907 cover front to England with 1d (SG55) block of 4 tied by Road Town cds's. Fine strikes of boxed 'R Road Town, Tortola, V.I. No.' and 'R St Thomas D.V.I. No.' h/s's. Most attractive.	50.00
639.	1916 O.H.M.S. cover to London with fine strike of very scarce 'OFFICIAL PAID ROAD TOWN TORTOLA V.I.' double circle without date also Road Town cds. St Thomas b/stamp. Clean and attractive. Ex Fredrick.	360.00
640.	1916 p.p.c. to France with pair of 1/2d's on picture side tied by Road Town cds. On reverse strike of the Official Paid h/s as previous lot but overstruck deliberately by good strike of rare crown circle 'PAID AT TORTOLA' (SG CC2) (possibly unique use) also part Road Town cds and Paris arrival mark. Fine real photo view of Paraquita Estate, Tortola. (Photo)	Reserve 800.00
641.	1922 reg. cover to W. Wilson, England with 1922-9 Script CA 1/2d, 1d, 2d and 2 1/2d tied by scarce 'WEST END AU 4 22' cds's in violet also 'R' in oval struck in same coloured ink. Fine.	80.00
642.	1927 reg. cover to W.T. Wilson, England with 1922-9 Multi CA 3d and 1/- (SG82-3) tied by light strikes of Virgin Gorda cds's. Fine boxed Virgin Gorda reg. h/s below. Neat.	50.00
643.	1941 (25 Jan) cover to England with 1/2d, 1d and 1 1/2d tied by Road Town cds's. Fine strike of scarce 3 line 'PASSED BY CENSOR V.Is.' h/s in purple unusually struck on front of envelope. Most attractive.	90.00
644.	1973 Coins set of F.D.C.'s each with actual proof issue coin cont. in special album. Fine. (6)	Reserve 30.00

THE FOLLOWING LOTS ARE SUBJECT TO V.A.T.

239-40 246-50 257 259 267 270-1 273-5 277 284-6 293 299 305 314-6 319-20 322-3 325-38 340-1
343 352-8 360 372 375 377 379-83 385-7 390 394-6 400 415-24 479-80 482 484 500 503-7 520 523
525 546 548 557-8 566-7 569-70 573 575-8 589-93 598-9 618 635-7 639-44

VALUE ADDED TAX will be charged at the standard rate of 17.5% on taxable lots only (properties of overseas vendors and E.E.C. registered dealers. Overseas buyers (including Channel Island residents) will not be charged V.A.T. on any lots which are dispatched overseas by the Auctioneers. Note that with effect from 1st January 1993 all E.E.C. customers will be charged V.A.T. unless they provide their registration number (in the case of registered dealers).



J.P. Budge
~~*W. Percival Bay*~~
St. Johns
Antigua
Basseterre

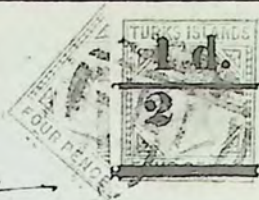
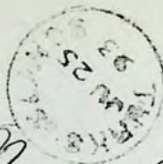
Per S. S. Saynau

L. E. Marton

1822 Bolton St

Baltimore Md.

U.S.A.



640

Post Card



Address



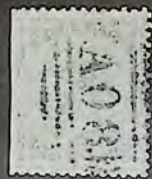
M. Georges Marchal

6 Rue des Lionnettes

Paris XI^e

France

526



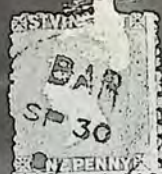
535



537



583



622



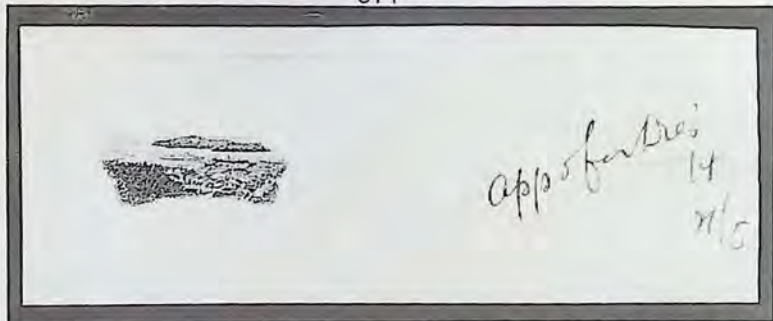
553



572



571



618



623



630

