

Sales Nos. 872 - 873

The  
"G. H. Boucher"  
Collection of

Nineteenth Century

British West Indies



A Specialised Stamp Sale

WEDNESDAY, November 9th, 1949, at 11 a.m. & 2 p.m.

*At the Auction Rooms of*

Robson Lowe Ltd.

50 Pall Mall, London, S.W.1

TRAFALGAR 4034-5

Catalogue: Price One Shilling



1881 Broad Star  
claret

1875 "SHLLING"  
error

1862 perf. 11½

1881 Broad Star

1881 Broad Star  
"PENCE"

This general collection is one of the finest in existence, including most of the great rarities and many unusual and unique pieces. On these four pages many of the rarer stamps are illustrated in colour, and the following are the most valuable items. All may be taken as mint unless otherwise described.

**ANTIGUA:** 1862 compound 6d., 1863 6d. yellow-green. Blocks of the 1862 6d., 1864 1d. (30), 1882 2½d., 1884 1/- and others. Also some fine covers.

**BAHAMAS:** 1861 6d. grey-lilac, 1862 perf. 13 4d. and 6d. An imperforate between block of the 1861 1d.

**BARBADOS:** In this sale we only include the De La Rue type with two copies of the 1892 provisional with double bi-coloured surcharge—one being the no hyphen variety.

**BERMUDA:** 1873 1/- vertical strip, imperforate horizontally.

**BRITISH HONDURAS:** 1888 CC 12½ 3c. on 3d. used, CA 14 2c. on 1d. double, "Two" in black and red on 50c. The blocks include 1866 1/- and the covers the rare errors S.G. 45, 46, 46a and 46b.

**DOMINICA:** 1877, several mint blocks including the 4d. with the malformed "PENCE". The rare provisionals include used single and pair of the inverted "½".

**GRENADA:** A wonderful range of provisionals with unsevered pairs and errors, the most valuable being S.G. 27a, 28a and 38b and used 16a and 28a.

**JAMAICA:** An exceptional lot of six \$ errors, some in mint pairs and blocks. Also many fine mint blocks including sixteen of the 3d. pink: a fine cover with CC 1d. bisect used with single 1d. and 1/-.

**MONTERRAT:** The inverted "S" variety is represented by CC 14 1d. used pair, 6d. mint single and in a block; CA 14 1d., CA 12 1d. unused and used. Mint blocks include the CC 14 6d. blue-green and the CA 14 2½d. brown. The covers include a dozen bisected 1d. and two-thirds and a third of the 6d.

*(Continued on inside back cover)*



1883 double

Unsevered pairs

"SHILLNG" error

# CATALOGUE

WEDNESDAY, November 9th, 1949

First Session at 11 a.m. precisely

The outstanding collection of

## BRITISH WEST INDIES

offered by order of

GEORGE H. BOUCHER, Esq., F.R.P.S.L.,  
of Bristol

### Antigua

- |   |   |     |   |
|---|---|-----|---|
| 1 | 1862 no wmk. 6d. imperf. proof in blue-green, an attractive block; the usual vertical pen strokes have been faded out | £6  | 4 |
| 2 | — Rough perf. 6d. blue-green, a mint pair, centred to top. Cat. £24 (see Photo Plate I)                               | £12 | 2 |

- |   |   |     |   |
|---|---|-----|---|
| 3 | — Ditto, as last, a superb mint <b>BLOCK</b> . Cat. £48 (see Photo Plate I, also in colour) | £30 | 4 |
|---|---|-----|---|

- |   |   |     |   |
|---|---|-----|---|
| 4 | — Perf. 14 to 16×11 to 13 6d. blue-green, very fine unused. With R.P.S. certificate. Cat. £35 (see Photo Plate I, also in colour) | £30 | 1 |
|---|---|-----|---|

- |   |   |     |    |
|---|---|-----|----|
| 5 | 1863-67 Star rough perf. 1d. rosy mauve and 1d. vermilion in superb unused <b>BLOCKS</b> . Cat. £13             | £12 | 8  |
| 6 | — 1d. rosy mauve, a mint block of four (one thinned), and 1d. vermilion, a mint strip of four                   | £9  | 8  |
| 7 | — 1d. rosy mauve, 1d. dull rose and 6d. deep green in good <b>USED STRIPS</b> of four, the last partly rejoined | £14 | 12 |
| 8 | — 1d. rosy mauve, a very fine <b>STRIP</b> bearing four clear impressions of the "A02" obliteration             | £10 | 6  |

- |   |  |     |    |
|---|--|-----|----|
| 9 | — 1d. dull rose, a <b>MINT BLOCK</b> (10×3); perfs. clipped at foot of two stamps; otherwise in remarkable condition | £50 | 30 |
|---|--|-----|----|

- |    |  |      |    |
|----|--|------|----|
| 10 | — 1d. vermilion (2), 6d. green (2), 6d. yellow-green (2); 1872 CC 12½ 6d. (4); 1876 CC 14 1d. (10), 6d. (2) and 1879 CC 4d. blue (2) in fine used pairs (8), a strip and a block, one pair cancelled "A18". Cat. 350/- | £12  | 24 |
| 11 | — 6d. green, superb unused. Cat. 70/-  | £2   | 1  |
| 12 | — 6d. dark green, 6d. green (2), 6d. yellow-green; 1872 CC 12½ 1d. lake, 1d. scarlet, 6d. blue-green (3, including two on one cover but not tied) and later Q.V. values to 4d.; good to very fine used. Cat. £11       | 90/- | 15 |

- |    |   |     |   |
|----|---|-----|---|
| 13 | — 6d. yellow-green, superb unused with original gum. Cat. £50 (see Photo Plate I) | £30 | 1 |
|----|---|-----|---|

BRITISH WEST INDIES

Lot	Description	Valuation	Stamps
	Antigua 1863-67—continued		11.4 a.m.
14*	6d. yellow-green, an attractive pair used on ENTIRE to England cancelled "A18" at English Harbour (see Photo Plate IV)	£10	2
15*	Ditto, a rather similar entire but cancelled "A02"	150/-	2
16	1d. vermilion, apparently imperforate; lightly cancelled and with large margins but not passed by the R.P.S.	?	1
17	1872 CC 12½ 1d. scarlet and 6d. blue-green, superb unused. Cat. 230/-	£5	2
18*	6d. blue-green, a fine pair used on entire to England cancelled "A02"	£8	2
19*	Ditto, a very similar entire	£8	2
20	1876 CC 14 1d. lake, a bisect beautifully tied to small piece with two complete stamps. Cat. 145/-	75/-	2½
21	1879 CC 14 2½d. red-brown and 4d. blue, superb unused with original gum. Cat. £16	£8	2
22	1882 CA 14 ¼d., 2½d. red-brown, 4d. blue; 1884-86 1d., 2½d. ultramarine (2, one with slanting foot to "2" in "2½"), 6d. and 1/-; very fine unused or mint. Cat. £17	£7	8
23	— 2½d. red-brown and 4d. blue, mint. Cat. 125/-	£3	2
24	— 2½d. red-brown, a superb mint BLOCK. Cat. £11	£10	11
25	1884 CA 12 1d. red, 1884-86 CA 14 1d. carmine-red and 1d. rose in mint blocks of four; the first has one perf. short. Cat. 170/-	£5	12
26	— 2½d. blue and 4d. chestnut in mint pairs and 6d. deep green, a mint strip of three, the first with one stamp showing the variety "2" in "2½" with slanting foot. Cat. 130/-	70/-	7
27	— 6d. deep green, a mint BLOCK (3×5) with sheet margin at top, a few rust stains	£14	15
28	— 1/- mauve, a mint BLOCK. Cat. £18 (see Photo Plate II)	£14	4

Bahamas

29	1859 imperf. thin paper 1d. lake, a mint block (3×2) from the N.W. corner of the sheet	£7	6
30	1860 clean-cut perf. 1d. lake, superb unused but for two tiny rust stains; centred slightly to right. Cat. £35 (see Photo Plate I)	£17	1
31	1861 rough perf. 1d. lake, good unused but slightly stained. With R.P.S. certificate. Cat. £15	£6	1
32	— 1d. lake, 4d. dull rose and 6d. pale dull lilac, fine used examples. Cat. £28	£12	3
33	— 4d. dull rose, very fine and lightly cancelled. Cat. £12	£5	1
34	— 6d. grey-lilac, superb unused. Unpriced (see Photo Plate I)	£25	1
35	— 6d. pale dull lilac, superb unused. Cat. £40 (see Photo Plate I)	£18	1
36	— Perf. 11 to 12 1d. lake, a superb unused block, IMPERFORATE between the stamps and at foot. With R.P.S. certificate stating it is the trial perforation by the "B" machine. Cat. £200 as normals (see Photo Plate II)	£150	4
37	1862 perf. 11½ to 12 1d. carmine-lake, very fine and lightly cancelled. Cat. 90/-	50/-	1
38	— 4d. dull rose, a fine copy cancelled "B". Cat. £12	£6	1
39	— Ditto, a similar copy cancelled "A05"	£6	1
40	— 6d. lavender-grey, very fine used. Cat. £15	£8	1
41	— Ditto, very fine used but centred to top	130/-	1

\*Covers

BRITISH WEST INDIES

Lot	Description	Valuation	Stamps
Bahamas 1862—continued		11.14 a.m.	
42	— Compound perf. 1d. lake, superb unused, a corner perf. pulled. With R.P.S. certificate. Cat. £30 (see Photo Plate II)	£15	1
43	— Perf. 13 1d. lake (2) and 1d. brown-lake (pair), very fine used. Cat. 210/-	£5	4
44	— Ditto, 1d. lake, 4d. dull rose, 6d. lavender-grey and 6d. lilac, fine used examples. Cat. 715/-	£9	4
45	— Ditto, 4d. dull rose, mint, centred slightly to top. Cat. £65 (see Photo Plate II)	£24	1
46	— Ditto, as last, an attractive used copy. Cat. £10	£4	1
47	— Ditto, 6d. lavender-grey, practically mint. Unpriced (see Photo Plate II)	£25	1
48	— Ditto, 6d. lilac, superb used. Cat. £15	£7	1
49	1860-63 CC 12½ 1d. carmine-lake, 1d. rose-red, 1d. red, 4d. dull rose, 6d. bright lilac and 6d. aniline-violet, superb unused or mint. Cat. 258/6	£6	6
50	— 1d. (five shades); CC 14 1d. (two shades) and 1/- green (block of four); also 1859 thin paper imperf. 1d. (pair); all mint. Cat. £12	95/-	13
51	— 4d. (3), 6d. (5), 1/- and CC 14 1d. (2) and 4d., fine to superb used shades including S.G. 28a (unpriced). Cat. 375/-+	£8	12
52	— CC 14 1d. aniline-scarlet, superb unused, a few perfs. thinned at top. With R.P.S. certificate. Cat. £30 (see Photo Plate II)	£10	1
53	— Ditto, 4d. bright rose, superb mint. Cat. £12	£7	1
54	— Ditto, 1/- green, a fine block (2×6) with dated cancellations. Cat. 90/-	75/-	12
55	1882 CA 12 1d. scarlet-vermilion and 4d. rose, superb mint. Cat. 172/6	90/-	2
56	— CA 14 1d. scarlet-vermilion, 4d. rose and 1/- green, superb unused, practically mint. Cat. £30	£18	3
57	1883 "FOURPENCE" on 6d. deep violet, very fine and lightly cancelled, a corner perf. pulled. With R.P.S. certificate. Cat. £12	£5	1
58	1884-98 CA 14 1d. (2), 2½d. (4), 4d., 6d., 1/- (block of four), 5/- and £1, superb unused or mint. Cat. £18	£8	14
59	— 2½d. dull blue, 2½d. blue, 2½d. ultramarine and 5/- sage-green, very fine used. Cat. 77/-	£2	4
60	— 5/- sage-green, a very lightly cancelled strip. Cat. 142/6	£5	3
61	Postal Stationery: 1881 envelopes: 4d. and 2½d. provisional of 1891; 2½d. 1892 (damaged). Registered envelopes: 1884 2d. (3, mint, used and "SPECIMEN"). Postcards: 1881 1½d. and 1d. provisional; 1883 ditto (both reply), 1892 1d. and reply and "SPECIMEN" of each, 1902 1d. (2, one used) and reply	35/-	18
62	BARBADOS: 1882-86 wmk. CA ½d. to 5/- (slight gum-staining) complete with shades and 1892 HALF-PENNY on 4d., two pairs, one showing variety no hyphen, unused or mint except one used. Cat. 375/-	£7	18
63	— Ditto, 4d. deep brown, fine mint BLOCK (6×3), and 5/- bistre, mint BLOCK of four, slight gum-staining on one stamp. Cat. £20	£14	22
64	— 1892 HALF-PENNY on 4d. deep brown, variety SURCHARGE DOUBLE, one red, one black; very fine unused with mostly original gum. With R.P.S. certificate. Cat. £35 (see Photo Plate II)	£20	1
65	— Ditto, the same variety with NO HYPHEN, very fine mint. With R.P.S. certificate. Cat. £100 (see Photo Plate II)	£65	1
NOTE: <i>The above is believed to be unique</i>			
66	— 1892-99 wmk. CA ½d. to 2/6 complete unused or mint with 2½d., 5d. and 10d. used; 1897-98 on white ½d. to 10d. complete mint (½d. and 6d. defective) and on blued paper ½d., ½d. (2), 1d., 2½d. and 2/6 (gum-stained) mint and 2/6 superb used. Cat. £24	£11	28

BRITISH WEST INDIES

Lot	Description	Valuation Stamps	
	Barbados—continued	11.22 a.m.	
67	— Ditto, on blued paper 2/6 blue-black and orange, a very fine mint block but gum-stained. Cat. 170/-	£4	4
68	Postal Stationery: 1882 1d. and provisional ½d. (3, one used). Registered envelopes: 1882 4d.; 1884-1890 1d. and 2d. (5, one used) and 1923 2½d. "SPECIMEN". Postcards: 1881-1913 complete 14 (one used) and one other bearing ½d. and 1d. adhesives of 1875. Wrappers: 1882 ½d. and ½d. provisional (1892) (2, one used)	£6	30

**Bermuda**

69	1865-1908, a collection, mint (28) and used: a number of scarce Queens. Cat. £22	£8	72
70	1865-73 CC 14 1d., 6d. and 1/- (block of four) used on piece, 2d. blue (6) used on two pieces including a pair cancelled in blue, and perf. 14x12½ 3d. and 1/- in fine used pairs. Cat. 237/6	£7	16
71	1865-73 CC 14 2d. dull blue, a mint BLOCK (6x2), wing margin at left. Cat. £18	£10	12
72	— CC 14x12½ 1/- green, a mint vertical strip, IMPERF. HORIZONTALLY BETWEEN THREE STAMPS; slightly thinned at foot but very rare. Cat. £85 (see Photo Plate II)	£45	4
73	1874 "THREE PENCE" on 1/- green, fancy type, "P" and "R" different types, a lightly cancelled copy, a few perfs. rough. With R.P.S. certificate. Cat. £12	£5	1
74	— Ditto, "P" and "R" the same type, very fine and lightly cancelled, part of red obliteration at foot. With R.P.S. certificate. Cat. £30 (see Photo Plate II)	£16	1
75	— Ditto, Roman capitals, lightly cancelled but slight thin and a few perfs. rough. With R.P.S. certificate. Cat. £12	£4	1
76	1873-75 "One Penny" on 2d. blue, superb unused; slightly off centre. With R.P.S. certificate. Cat. £15 (see Photo Plate II)	£9	1
77	— "One Penny" on 3d. yellow-buff, a fine dated copy. Cat. £10	£5	1
78	— Ditto, another lightly cancelled, and "One Penny" on 1/- green, a similar example. Cat. 230/-	£6	2
79	1884-03 CA 1d. dull rose, 2d. blue, 2d. brown-purple and 1/- yellow-brown in blocks of four, the last lightly cancelled, the others mint. Cat. 228/-	£6	16
80	Postal Stationery: Registered envelope: 1892 2d. Postcards: 1880 ½d.; 1892-1902 (10, including 1½d. reply, three used). Wrappers: 1912 ½d. and 1913 ½d.	45/-	14
81	— 1893 provisional postcard bearing ½d. stone and 1d. rose adhesive surcharged "One Penny", superb unused (see Photo Plate IV)	£16	2
82*	— Ditto, as last, fine used to Germany (see Photo Plate IV)	£20	2
<b>British Honduras</b>			
83	1866 no wmk. perf. 14 1d. pale blue (pair), 1d. blue (2), 6d. rose and 1/- green, very fine unused or mint. Cat. 270/-	£5	6
84	— 1d. pale blue, a mint block, wing margin at left. Cat. £6	£5	4
85	— 1/- green, a mint BLOCK. Cat. £18 (see Photo Plate II)	£20	4
86	— 6d., 1/-; 1872-79 CC 12½ 3d. (2), 6d., 1/- (5), CC 14 1d., 4d., 1/- and later Queens including four BISECTS on pieces; fair to fine used. Cat. £37	£12	25

\*COVERS

## BRITISH HONDURAS

Lot	Description	11.29 a.m.	Valuation	Stamps
87	1872-79 CC 12½ 1d. blue (two shades) and 6d. rose (tiny stain), very fine unused or mint. Cat. 137/6		£3	3
88	— 1/- green, a lightly cancelled horizontal strip, a few perfs. pulled		£7	5
89*	— 1/- deep green, a strip of five and a pair used on <b>COVER</b> ; very fine condition (see Photo Plate IV)		£25	7
90	— CC 14 1d., 3d., 4d. and 1/- (two shades), superb unused or mint		£6	5
91	— Ditto, 6d. rose, superb unused. Cat. £12		£7	1
92	1882-87 CA 1d. blue, 1d. rose, 1d. carmine, 4d. mauve and 6d. yellow, superb unused or mint. Cat. 350/-		£8	5
93	— 1/- grey, very fine and lightly cancelled; slightly creased. Cat. £12		90/-	1
94*	— 4d. mauve used on a poor cover; 1888-89 large surcharge "2 CENTS" on 1d. carmine, a bisect used with whole stamp on cover, and "10 CENTS" on 4d. mauve, a fine strip of six cancelled "K65" on a letter card to Germany		£3	9
95	1888-89 small surcharge "2 CENTS" on CC 12½ 1d. carmine, a pair and single fine used on piece (see Photo Plate II)		£15	3
96	— Ditto, "3 CENTS" on CC 12½ 3d. chocolate, a good used copy of this rare stamp. With R.P.S. certificate. Cat. £120 (see Photo Plate III)		£55	1
97	— Ditto, "2 CENTS" on CA 14 1d. rose, variety <b>SURCHARGE DOUBLE</b> , superb unused but for a slight crease. With R.P.S. certificate. Cat. £70 (see Photo Plate III)		£40	1
98	— Ditto, "50 CENTS" on CA 14 1/- grey, fine unused but slight crease and gum stains. With R.P.S. certificate. Cat. £30 (see Photo Plate II)		£16	1
99	— Ditto, "TWO" on 50c. on 1/- grey, variety <b>SURCHARGE IN BLACK AND IN RED</b> , a fine unused copy of this rarity; manuscript endorsement at back and a tiny surface defect at top but one of the best known copies. With R.P.S. certificate. Cat. £350 (see Photo Plate III)		£170	1
100	— "20 CENTS" on CA 14 6d. yellow; "TWO" in red on 50c. on 1/- grey; large overprint 2c. on 1d. to 50c. on 1/- (pair); later provisionals including 1891 "FIVE" on 3c., variety wide spacing, and 1899 overprinted "REVENUE" 5c. to 50c.; all fine unused or mint		£6	29
101*	1891 "6" on "10 CENTS" on 4d. mauve, variety "6" and bar inverted, examples surcharged in red and in black used together on a registered <b>COVER</b> to Scotland. With R.P.S. certificate. Cat. £65 (see Photo Plate IV)		£30	2
102*	— Ditto, examples of the same varieties used together on a registered <b>COVER</b> to Bermuda (see Photo Plate IV)		£30	2
103*	— Ditto, variety "0" only inverted, red surcharge, a very fine example used on <b>COVER</b> to U.S.A. with normal. With R.P.S. certificate. Cat. £150 (see Photo Plate IV)		£100	2
104*	— Ditto, as last, black surcharge, a very fine example used on <b>COVER</b> to Scotland with normal. With R.P.S. certificate. Cat. £150 (see Photo Plate IV)		£100	2

\*Covers

BRITISH WEST INDIES

Lot	Description	Valuation	Stamps
	British Honduras 1891—continued	11.35 a.m.	
105	— "FIVE" in black on "3 CENTS" on 3d. red-brown, variety surcharge double, superb unused. With R.P.S. certificate. Cat. £15 (see Photo Plate III)	£8	1
106	1891-98 1c. to \$5, 1900-1 5c. and 10c. complete mint with shades. Cat. 490/-	£14	17
107	1899 "REVENUE" overprints 5c. to 50c. (both sets of overprints), 5c. and 25c. "BEVENUE" errors, all mint. Cat. 346/-	£9	10

An unusual and interesting collection of  
**CAYMAN ISLANDS**

offered by order of  
W. R. SEFTON-FIDDIAN, Esq.,  
of Birmingham

108	Jamaica used in the Islands: 1889 1d. purple and mauve with a good impression of the right side of the first Georgetown obliterator and three others with rather poor impressions of the second Georgetown cancellation	£8	4
109*	— 1906 1d. carmine tied to front by an impression of the second Cayman Brac obliterator. Probably produced by favour after Jamaica stamps had ceased to have franking power	£5	1
110	"Specimen" stamps: Q.V. ½d., 1d.; 1901-2 ½d. to 1/-; 1907 4d. to 5/-; 1907-9 ½d. to 10/- and 1912 2½d., 3d., 1/-, 5/- and 10/- (in pairs); mint copies overprinted "SPECIMEN"	£5	30
111	1900 Q.V. ½d. (2), 1d. (2); 1901-2 ½d. to 1/- with two 6d.; 1905-6 MCA ½d. to 1/- and 1907 4d. to 5/- (gum-stained); all unused or mint. Cat. £28	£10	19
112	— ½d. (4), 1d. (3); 1901-2 ½d., 1d. (2), 1/-; 1905-6 MCA ½d., 1d. (2), 2½d. (2), 6d. (2), 1/- (3); 1907 4d., 6d., 1/-; 1907-9 6d. (2), 1/-, 5/- and 1908 ½d. (3); nearly all postally used. Cat. 536/-	£12	31
113	1905-6 MCA 6d. brown and 1/- orange in fine used pairs. Cat. 135/-	£3	4
114	1907 new colours 4d. to 5/-, all with impressions of the fifth Georgetown obliterator, certainly post-dated. Cat. £22	£10	4
115	— "One Halfpenny" on 1d. carmine, a fine strip, postally used. Cat. £9	£6	4
116	— Ditto, another used on piece, and 1907-9 5/- on another piece, probably cancelled to order. Cat. 110/-	£3	2
117	— Ditto, a mint copy, and 1907-9 ½d. to 10/- (the 1/- with single CA wmk.), all very fine unused or mint. Cat. 271/-	110/-	12
118	— "½D" on 5/- salmon and green, mint. Cat. £12 (see Photo Plate III)	£7	1

119	— Ditto, variety surcharge double, mint but a slight crease. Unpriced. With R.P.S. certificate (see Photo Plate III)	£30	1
-----	--	-----	---

120	1907 "½D" on 5/- and "1D" on 5/- in MINT MARGINAL BLOCKS OF FOUR. Both with R.P.S. certificates. Cat. £96 (see Photo Plate III). Also photos of complete sheets of these stamps	£80	8
-----	---	-----	---

121	— "1D" on 5/- salmon and green, mint, a tiny paper flaw. Cat. £12 (see Photo Plate III)	£7	1
-----	---	----	---

122	— Ditto, a fine copy postally used on small piece, one corner torn. Cat. £14	£3	1
-----	--	----	---

\*Cover



## CAYMAN ISLANDS

Lot	Description	Valuation Stamps	
		11.41 a.m.	
123	1908 "2½D" on 4d. brown and blue, superb mint. With R.P.S. certificate. Cat. £40 (see Photo Plate III)	£28	1
124	— "1D" on 4d. black and red on yellow (Revenue stamp only), a mint copy mounted on letter from Georgetown referring to its enclosure and to its status, also to the method of franking employed by the Postmistress of the containing envelope, which bears "Postage Paid—G. A. P." in manuscript in red and an impression of the fourth Georgetown obliterator. An interesting piece of history for the Caymans specialist	£15	1
125	— Ditto, an unused example of the adhesive, apparently with surcharge inverted but with R.P.S. certificate stating the surcharge is too indefinite for an opinion (see Photo Plate III)	£8	1
126	— Ditto, a normal bearing a poor impression of the fourth Georgetown obliterator	£7	1
127	1907-9 universal colours ½d. to 10/- complete used with both 1/-; some cancellations show 1913 dates. Cat. £18	£9	10
128*	1908 (October) handstruck provisionals: A cover bearing "Pd. ½d.—W. G. Mc. C" in manuscript in red and an impression of the fourth Georgetown obliterator dated "OC 16 08"	£2	cover 1
129*	— A similarly franked cover dated "OC 13 08"	£2	cover 1
130*	— A similar cover but initialled "G. A. P." and dated "OC 15 08"	£3	cover 1
131	1912-20 ½d. to 10/- (white back) complete, the 2/- and 3/- used, the others mint; additional values to 1/- in mint pairs. Cat. 274/-	110/-	30
132	— 2½d. to 10/- (2), used, some cancelled to order. Cat. 307/-	£6	11
133	1917-20 War stamps: A collection, some in mint blocks, others on covers, including S.G. 55 mint. Cat. 270/-	£5	57
134	1921-26 2d. perforated plate proof in carmine; rare thus	£3	1
135	— Ditto, an imperforate plate proof overprinted "SPECIMEN"	£3	1
136	— 4½d. imperforate plate proof in blue, slight crease	£3	1
137	— MCA 3d., 4d., 1/- (2), 5/- (4), 10/- (2) and Script ½d. to 10/-, all mint. Cat. £26	£11	24
138	— Ditto, 3d., 4d. (3), 1/- and Script ½d. to 10/- complete used. Cat. 194/-	90/-	20
139	— Script 4½d. sage-green, a mint block (6x5). Cat. 225/-	75/-	30
140*	1932 Cayman Brac handstruck provisionals: A letter from the Postmaster of Jamaica giving details of their use and other relevant information. Also a rather battered cover to U.S.A. initialled "A. S. R." with Cayman Brac cancellation dated "DE 17 1932" and Jamaican "POSTAGE PAID" in black and a piece bearing "A. S. R." and Jamaican "POSTAGE PAID" in red	£15	items 7
141	1932 Centenary: A complete mint set perforated "SPECIMEN"	£6	12
142	— ½d. to 5/- complete mint. Cat. 325/-	£7	11
143	— ½d. to 10/- complete used. Cat. £49	£20	12
144	— ½d., 1½d. and 2½d. in mint blocks of four, values to 1/- used on covers, some as postage dues; 1935 Silver Jubilee mint and used sets and others	£5	36
145	1935 ½d. to 10/- complete mint. Cat. 277/-	£5	12
146	— Ditto, a complete used set. Cat. 202/-	£6	12
147	1937 Coronation sets mint and used; 1938-47 ½d. to 10/-, two mint sets and one used; 1946 Victory and 1948 Silver Wedding sets mint and others. Cat. 145/-	65/-	08
148	Rural Post cancellations: Seven adhesives and an attractive stamped 2½d. envelope; also a pair of K.G. V ½d. with Boddentown cancellation and two obliterated "T"	£5	12

\* Covers

BRITISH WEST INDIES

Lot	Description	11.47 a.m.	Valuation	Stamps
<b>Dominica</b>				
149	1874 wmk. CC perf. 12½ 1d. to 1/-; 1877-79 CC perf. 14 2½d. and 4d.; 1882 "HALF PENNY" on half 1d.; 1883-84 ½d. CA; 1886 1d. on 6d. and 1d. on 1/-; 1886 ½d., 1d. (3) and 4d. 2, one the variety malformed "CE" in "PENCE" and 1887-88 1d., 2½d. and 6d.; good to fine unused or mint copies. Cat. 555/-		£10	18
150	— 1d. lilac, a pair; 1877-79 CC perf. 14 ½d. yellow-olive, a marginal block (3×2), and 1d. lilac, a marginal block of four; one stamp with small gum disturbance, otherwise all mint. Cat. 162/-		£7	12
151	— Ditto, a vertical pair; 1877-79 CC perf. 14 1d. lilac, a vertical pair and horizontal strip of four (slightly stained), and 1887-88 CA 1d. deep carmine, a horizontal pair; all fine used. Cat. £4		£3	10
152	— 6d. green, closed tear at right; 1877-79 CC perf. 14 1d., 2½d., 6d. (tiny tear) and 1/-; 1883-84 CA 2½d.; 1886 1d. lilac and 4d. (closed tear at bottom) and 1887-88 6d.; all fine used. Cat. 266/6		90/-	9
153	1877-79 wmk. CC perf. 14 2½d. red-brown, a very fine marginal mint BLOCK; small gum crease extending across two stamps. Cat. £14		£10	4
154	— 4d. blue, a superb mint block. Cat. £9		£8	4
155	— Ditto, an unused marginal BLOCK with part original gum, one stamp the variety malformed "CE" in "PENCE" (small thin spot), one stamp a few perfs. cut. Cat. £41 (see Photo Plate II)		£20	4
156	— 6d. green, a brilliant mint BLOCK (3×2). Cat. £21 (see Photo Plate III)		£17	6
157	— 1/- magenta, a very fine mint horizontal pair. Cat. 130/-		£4	2
158*	1882 provisionals: Small "½" in black, a single, and large "½" in red on half 1d., three pairs and a single, also 1883 "HALF PENNY" on half 1d., a single, all very fine used on the same registered front addressed to Barbados. Cat. 250/-		110/-	9
159*	— Small "½" in black on half 1d., five vertical pairs used on the same registered cover to Guadeloupe, all very well tied with "A07" cancellation. Cat. £35 (see Photo Plate IV)		£20	10
160	— Large "½" in red on half 1d., a mint block (2×4), slightly gum-stained. Cat. £9		£4	8
161	— Ditto, two fine used horizontal pairs on small registered piece. Cat. £4		£2	4
162*	— Ditto, two vertical strips of four and a single, well tied and used on the same cover to St. Kitts. Cat. £9		£6	9
163	— Ditto, a very fine used example of the variety SURCHARGE INVERTED. With R.P.S. certificate. Cat. £40 (see Photo Plate III)		£24	1
164	— Ditto, the same variety, a superb used horizontal PAIR with dated cancellation. With B.P.A. certificate. Cat. £80 (see Photo Plate III)		£55	2
165	1883 "HALF PENNY" on half 1d., a fine unused horizontal pair, nearly full original gum, the surcharge reading upwards. Cat. £10		£4	2
166*	— Ditto, two blocks of FOUR and a single fine used (and well tied) on the same cover to St. Kitts; the surcharge reads upwards. Cat. £18		£12	9
167	1883-84 wmk. CA 2½d. red-brown, a superb mint block. Cat. £10 (see Photo Plate III)		£8	4
168	1886 provisionals: "Half Penny" on 6d. green and "One Penny" on 1/- magenta in superb mint blocks, the first marginal. Cat. £7		£5	8
169	— Ditto, as last, the former a block of four, the latter a horizontal strip of six, very fine used on two small pieces. Cat. £10		£6	10

\* Covers

BRITISH WEST INDIES

Lot	Description	Valuation	Stamps
	Dominica—continued	11.56 a.m.	
170	1887-88 wmk. CA 1/- magenta, a fine unused copy with nearly full original gum. Cat. £15	£7	1
171	1903 wmk. CC ½d. to 5/- complete and 1907-8 MCA ½d. to 5/- complete mint, some slightly stained; also MCA 5/- fine used; 1908-19 changes of colour 1d., 2d., 2½d., 3d. (2), 6d. (2), 1/- and 2/-, 1914 5/- War Tax overprints (25), 1921 MCA 2/6 and 1921 Script ½d. to 2/6 complete mint. Cat. £37	£14	67
172	Postal Fiscals: 1879 CC 6d. and CA 1d. in mint blocks of four; 1879 1d., four used on front with 1882 small "½" provisional (torn) and large "½" (3), and a strip of six used on large piece; the same stamp, bisected vertically, on portion of newspaper and 1/- magenta used on small piece; also 1899 1d., four singles fine used on two large pieces	£8	28

GRENADA

173*	1859, an entire to England franked by a fine pair of G.B. 1856 6d. lilac cancelled "A15", wing margin at left	70/-	2
174	1861-62 no wmk. rough perf. 1d. blue-green, superb unused with original gum. Cat. £35 (see Photo Plate V)	£15	1
175	— 1d. green, a superb unused pair. Cat. 110/-	70/-	2
176	— Ditto, a mint block with sheet margin at left but one pair crossed by gum crease. Cat. £11	£7	4
177	— 6d. rose, very fine unused, a faint crease. Cat. £18 (see Photo Plate V)	£10	1
178	1862 perf. 11½ 6d. lake, superb unused with original gum, a tiny thin. Cat. £30 (see Photo Plate V, also in colour)	£15	1
179	1863-72 Small Star rough perf. 1d. green, a mint marginal pair; the wmk. is <b>SIDEWAYS</b> (see Photo Plate V)	£10	2
180	— Ditto, a very fine strip cancelled "A15" (one corner torn); watermark sideways	£7	3
181	— 1d. green and 6d. deep rose in fine used pairs, the first with dated cancellation; all <b>WATERMARK SIDEWAYS</b>	£10	4
182	— 6d. rose, superb unused with original gum. Cat. £12 (see Photo Plate V)	£8	1
183	— Ditto, a fine used vertical pair; 6d. vermilion (2) and 1881 Small Star perf. 14½ 1d. green (4) in similar horizontal pairs, the last three dated. Cat. 135/-	75/-	8
184	— 6d. orange-red, a fine strip of four cancelled "A15", and 1881 Large Star perf. 14½ ½d. deep mauve, a lightly cancelled block of four	£5	8
185	1873-80 Small Star clean-cut perf. 1d. deep green, 1873 Large Star clean-cut perf. 1d. blue-green, 1875 Large Star perf. 14 1d. yellow-green and 1881 Small Star perf. 14½ 1d. green, fine unused or mint, the second with R.P.S. certificate. Cat. 175/-	90/-	4
186	1875 Large Star perf. 14 1/- deep mauve, the "SHLLING" error, very fine and exceedingly lightly cancelled but a faint crease and a few perfs. blunt. Cat. £75 (see Photo Plate V, also in colour)	£40	1
187	— Ditto, variety inverted "S" in "POSTAGE", lightly cancelled but a corner torn. With R.P.S. certificate. Cat. £15	£4	1
188	— 1d. yellow-green, a fine mint <b>BLOCK</b> , slightly off centre. Cat. £25	£18	10
189	— 1d. yellow-green and 1d. green in fine used strips of three	£6	6

\* Cover

GRENADA

Lot	Description	Valuation Stamps	
		12.3 p.m.	
190	1881 Large Star perf. 14½ ½d. deep mauve (5) including a block of four, 2½d. rose-lake (two shades), 4d. blue and Broad Star 2½d. rose-lake, very fine unused or mint. Cat. £21	£10	9
191*	— ½d. deep mauve, three pairs and four strips used on the front and back of a COVER to England; one is the variety without hyphen. With R.P.S. certificate	£15	19
192	— ½d. pale mauve and ½d. deep mauve in fine used pairs, the last with one stamp showing the variety "no hyphen"	£3	4
193	— ½d. deep mauve, variety IMPERF., a superb unused pair. Cat. £15 (see Photo Plate V)	£9	2
194	— Ditto, the "OSTAGE" error, very fine unused. With R.P.S. certificate. Cat. £8 (see Photo Plate V)	70/-	1
195	— Ditto, the same error superb used on small piece. Cat. £6	90/-	1
196	— Ditto, variety surcharge double, very fine unused. With R.P.S. certificate. Cat. £10 (see Photo Plate V)	£6	1
197	— 2½d. rose-lake, a superb unused IMPERFORATE pair. Cat. £25 (see Photo Plate I, also in colour)	£18	2
198	— Ditto, a superb unused pair of the same variety with smaller margins at sides. With R.P.S. certificate (see Photo Plate V)	£12	2
199	— Ditto, variety "PENCF", a fine used copy in pair with normal. With R.P.S. certificate. Cat. 87/6	70/-	2
200	1881 Broad Star 14½ 2½d. rose-lake, error "PENCF", a very fine example lightly cancelled in blue. Cat. £25 (see Photo Plate V, also in colour)	£14	1
201	— 2½d. deep claret, the rare shade in mint condition. Cat. £30 (see Photo Plate V, also in colour)	£18	1
202	— Ditto, a very fine used copy, slight thins. Cat. £18	£5	1
203	— 4d. blue, a superb unused PAIR with original gum but slightly stained. Cat. £24 (see Photo Plate I, also in colour)	£14	2
204	— Ditto, a superb used copy, centred slightly to right but very lightly cancelled. Cat. £25 (see Photo Plate V, also in colour)	£14	1
205	1883 overprinted "POSTAGE" horizontally 1d. orange and green, a fine used copy. Cat. 75/-. With R.P.S. certificate	£2	3
206	— Ditto, a lightly cancelled pair, one corner rounded. Cat. 150/-	£6	2
207	— Ditto, a diagonal bisect used on small piece. With R.P.A. certificate	£8	1
208	— Ditto, variety "POSTAGE" double, superb unused with original gum. With R.P.S. certificate. Cat. £70 (see Photo Plate V, also in colour)	£45	1
209	— Similarly overprinted "POSTAGE" diagonally on half of 1d. orange and green, a superb unused UNSEVERED PAIR. With R.P.S. certificate. Cat. £200 (see Photo Plate V, also in colour)	£120	2
210	— Ditto, a similar UNSEVERED PAIR, very fine used, a few perfs. blunt. Cat. £75 (see Photo Plate V, also in colour)	£30	1
211	— Overprinted "POSTAGE" diagonally in smaller type on half of 1d. orange and green, a very fine used unsevered pair. With R.P.S. certificate. Cat. £18 (see Photo Plate V, also in colour)	£12	1
212	1883 CA ½d. to 1/- (a few perfs. stained) complete unused or mint, including tête-bêche pairs or blocks; also a used tête-bêche pair of the reverse 1d. Cat. £14	£6	23

\*Cover

GRENADA

Lot	Description	Valuation Stamps	
		12.11 p.m.	
<b>1886-91 Provisionals</b>			
213	A collection comprising S.G. 37 and 38 mint, 39 used (2), 44 mint and used, 42 mint pair, 43 mint (2) and used (2) and 44, a mint pair and single. Cat. £20	£10	15
214*	Three covers bearing S.G. Nos. 39, 41, 43, 44, 45 (2) and other adhesives. Cat. £9	£10	9
215	— "1d" on 1½d. orange and green, a superb unused block. Cat. £5	£5	4
216	— Ditto, variety surcharge inverted, very fine unused with much original gum. With R.P.S. certificate. Cat. £12 (see Photo Plate V)	£9	1
217	— Ditto, a very similar copy of the same variety but insignificant thin at foot. With R.P.S. certificate	£6	1
218	— Ditto, variety <b>SURCHARGE DOUBLE</b> , very fine used but slightly off centre. With R.P.S. certificate. Cat. £18 unused (see Photo Plate V)	£12	1
219	— Ditto, error " <b>THRE</b> ", superb unused. With R.P.S. certificate. Cat. £18 (see Photo Plate V)	£12	1
220	— Ditto, error " <b>PFNCE</b> ", superb unused. With R.P.S. certificate. Cat. £18 (see Photo Plate V)	£10	1
221	— Ditto, a fine unused copy of the same variety. With R.P.S. certificate	£10	1
222	— Ditto, error " <b>HALH</b> ", very fine used; perfs. pulled at one corner but unpriced and very rare. With R.P.S. certificate (see Photo Plate V)	£9	1
223	— "1d" on 1/- orange and green, a superb used block (3×2). Cat. 165/-	£7	6
224	— Ditto, error " <b>SHILLNG</b> ", very fine unused but slightly thinned. Unpriced. With R.P.S. certificate (see Photo Plate V, also in colour)	£25	1
225	1888 "4d." on 2/-, 4 mm. spacing, variety upright "d" included in a mint strip with two normals. Cat. 375/-	£15	3
226	— Ditto, the same variety superb used. With R.P.S. certificate. Cat. £18 (see Photo Plate V)	£10	1
227	— Ditto, variety wide spacing between " <b>TWO</b> " and " <b>SHILLINGS</b> ", mint. Cat. 95/-	50/-	1
228	— Ditto, variety first " <b>S</b> " in " <b>SHILLINGS</b> " inverted, very fine used. Cat. £18 (see Photo Plate V)	£10	1
229*	— Ditto, a fine used example of the same variety included with normals in a fine marginal <b>BLOCK</b> (5×2) used on <b>COVER</b> (see Photo Plate VI)	£15	10
230	— Ditto, 5 mm. spacing, variety wide space between " <b>TWO</b> " and " <b>SHILLINGS</b> ", very fine used. With R.P.S. certificate. Cat. £15 (see Photo Plate V)	£8	1
231	1880 " <b>HALF PENNY</b> " on 2/-, a fine used strip of five, and the variety wide space between " <b>TWO</b> " and " <b>SHILLINGS</b> " in a fine used pair with normal (tiny tear). Cat. 103/-	£5	7
232	— Ditto, variety <b>SURCHARGE DOUBLE</b> , very fine used. With R.P.S. certificate. Cat. £20 (see Photo Plate V)	£15	1
233	— Ditto, variety first " <b>S</b> " in " <b>SHILLINGS</b> " inverted included in a mint block with normals. Uncatalogued (see Photo Plate VII)	£10	4
234	— Ditto, a fine used example of the same variety. With R.P.S. certificate	£6	1
235	1890 "1d" on 2/-, variety surcharge inverted, mint. With R.P.S. certificate. Cat. £20 (see Photo Plate V)	£14	1
236	— Ditto, variety wide space between " <b>TWO</b> " and " <b>SHILLINGS</b> " included in a mint block (3×2) with normals but slightly creased. Cat. 270/-	£8	6
237	1891 "1d" on 2/-, variety no stop after "1d", mint but slightly off centre. With R.P.S. certificate. Cat. £12 (see Photo Plate V)	£8	1
238	1891 "1d" on 8d. grey-brown, variety no stop after "1d" included in a mint pair with normal. With R.P.S. certificate. Cat. 215/-	£5	2

\*Covers

**BRITISH WEST INDIES**

Lot	Description	Valuation	Stamps
	12.20 p.m.		
	<b>Grenada Provisionals—continued</b>		
230	1891 "2½d." on 8d. grey-brown, variety triple surcharge, fine used but thinned. With R.P.S. certificate	£8	1
240	— Ditto, a mint tête-bêche pair and a similar block; "2½d" on 8d., a similar pair; 1895-99 ½d. to 1/- and 1898 Columbus 2½d.; all mint. Cat. 230/-	£5	17
241	Postage Due stamps: 1892 1d. to 3d. blue-black mint, 1d. and 2d. on 6d. mint, 1d. and 2d. on 8d. used and 1d. on 6d. variety surcharge double fine used and with R.P.S. certificate. Cat. 175/-	£4	8
242	— Ditto, "2d" on 8d. grey-brown, superb unused. With R.P.S. certificate. Cat. £18 (see Photo Plate V)	£9	1
243	The used remainder including 1861-62 1d., 6d. (4); 1863-71 1d. (2), one with wmk. sideways, and 6d. (2); 1873-80 6d. (2); 1875 1/- (2), one with inverted "S" in "POSTAGE"; 1881 2½d. (9), one with no stop, and 4d.; many very fine. Cat. £56	£18	25
244	Postal Stationery: Registered envelopes: 1886 2d. (2) and 1912 2d. used. Postcards: 1881 1d. and 1½d. (very rare), 1881-82 1d. and 1½d. both mint and used (rare); also 1886-1902 (10) including one reply 1½d. and wrappers (½d., 1d. used and 2d.)	£10	23
<b>Jamaica</b>			
245	1860-63 Pine 1d. (2), 2d. (3), 3d. (pair), 4d., 6d. and 1/- (2), fine unused to mint shades. Cat. £56	£20	11
246	— 1d. (pair), 2d. (single and strip of four), 3d., 6d. (2) and 1/- (four shades), fine to very fine used. Cat. £13	£6	14
247	— 1d. blue and 1d. pale blue in mint vertical strips of three, one stamp slightly stained. Cat. £12	£7	6
248*	— 1d. blue, a diagonal bisect beautifully tied to piece of newspaper, creused by paper fold. With R.P.S. certificate. Cat. £15	£5	1
249	— 3d. green, a mint <b>BLOCK</b> (4×4) with sheet margin at left (see Photo Plate VI)	£50	16
250	— 4d. brown-orange, a mint <b>PAIR</b> , some perfs. gum-stained. Cat. £20 (see Photo Plate VII)	£10	2
251	— 6d. dull lilac, a mint <b>BLOCK</b> , rather off centre. Cat. £40 (see Photo Plate VII)	£22	4
252	— 6d. deep purple, a mint <b>PAIR</b> . Cat. £50 (see Photo Plate I, also in colour)	£30	2
253*	— Ditto, a fine pair (slightly off centre) beautifully cancelled "A42" on cover	£6	2
254	— 1/- dull brown, the "Dollar" variety, very fine and lightly cancelled. Cat. £25 (see Photo Plate VII)	£14	1
255	— Ditto, a very similar example of the same variety (see Photo Plate VII)	250/-	1
256	1870-83 CC 14 ½d., 1d., 2d. (3), 4d. (2) including the red-orange, 6d., 1/- and CC 12½ 2/- and 5/-, all very fine unused or mint. Cat. 555/-	£11	11
257	— 1d., 3d., 4d. and 1/- (14), all used, the last including a strip of five and two vertical strips of four. Cat. £6	£5	16
258*	— 1d. blue, the very rare diagonal <b>BISECT USED ON ENTIRE</b> with complete 1d. and 1/- stamps. With R.P.S. certificate (see Photo Plate XII)	£30	2½

\* Covers

## JAMAICA

Lot	Description	Valuation Stamps	
	1870-83 CC 14—continued	12-26 p.m.	
259	— 2d. deep rose, 4d. brown-orange and CC 12½ 5/- lilac in mint pairs, the 4d. vertical. Cat. 370/-	£8	6
260	— 3d. green, 6d. mauve, 1/- dull brown and CC 12½ 2/- Venetian red and 5/- lilac in mint <b>BLOCKS</b> of four, a few small gum stains. Cat. £41	£20	20
261	— 1/- dull brown, a very fine lightly cancelled copy of the "Dollar" variety. Cat. £12	£7	1
262	1883-97 CA ½d. (2), 1d. blue, 1d. rose (2), 2d. rose (5, including a block of four), 2d. slate, 2d. grey, 3d. (2), 4d. red-brown, 6d. (2), 1/-, 2/- (block of four) and 5/-, all fine unused or mint, plus a few used. Cat. £31	£14	31
263	— 2d. slate, a mint block (6×2), an ink spot on one stamp. Cat. £21	£9	12
264	— 4d. red-orange, mint. With R.P.S. certificate. Cat. £18	£8	1
265	— Ditto, a mint <b>PAIR</b> . Cat. £36 (see Photo Plate I, also in colour)	£17	2
266	— Ditto, a <b>MINT BLOCK</b> (3×2), insignificant gum crease. Cat. £108 (see Photo Plate VII)	£50	6
267	— 1/- chocolate, the "Dollar" variety included in a mint corner <b>BLOCK</b> (see Photo Plate VII)	£24	4
268	1889-1906, a collection, mint and used, the former including 1890 2½d. provisionals; 1903-4 ½d. to 5d. and 1905-11 ½d. to 5/- with some "SER. ET" varieties. Also 1916 1½d. "WAR TAMP" error and a few postal fiscals and officials. Cat. £21	£8	49
269	1890 "TWO PENCE HALF-PENNY" on 4d. red-brown, variety surcharge double, very fine used. With R.P.S. certificate. Cat. 95/-	50/-	1
270	— Ditto, two superb copies used on piece. With R.P.S. certificate (see Photo Plate VII)	£10	2
271	— Ditto, a fine used vertical pair, faintly creased	£7	2
272	— Ditto, the "PFNNY" variety, a superb unused example also showing <b>DOUBLE SURCHARGE</b> . With R.P.S. certificate (see Photo Plate VII)	£12	1
273	— Ditto, the variety "F" for "E" and broken "K" for "Y" in "PENNY", very fine used. With R.P.S. certificate. Cat. £4	50/-	1
274	— Ditto, another fine used copy of the same variety	50/-	1
275	1903-4 Arms type ½d., 1d., 2½d. and 1905-11 MCA ½d., mint copies showing the "SER. ET" variety, the 1d. and 2½d. in pairs with normals. Cat. 115/-	50/-	6
276	— 5d. grey and yellow, the "SER. ET" variety included in a mint strip with normals; the left normal has a corner perf. off. Cat. £40 (see Photo Plate VII)	£17	3
277	1905-11 MCA 5d. grey and orange-yellow, the <b>SAME VARIETY</b> included in a similar marginal strip, one perf. gum-stained. Cat. £50 (see Photo Plate VII)	£28	3
278	1905-11 Queen's Heads 3d. sage-green, 3d. purple on yellow, 4d. red-brown, 4d. black on yellow, 4d. red on yellow, 6d. orange (2), 6d. golden yellow, 6d. purple, 1/- deep brown, 1/- black on green, 2/- Venetian red and 2/- purple on blue, all mint. Cat. £14	£7	13
279	— 1/- deep brown, the "Dollar" variety, very fine used, a few perfs. rough at top. Cat. £25 (see Photo Plate VII)	£16	1
280	— 1/- black on green, the "Dollar" variety included in a mint marginal pair. Cat. £20 (see Photo Plate VII)	£14	2
281	1921-29 Script 2/- light blue and brown, a vertical mint pair, the lower stamp with huge imperforate margin at bottom	£8	2

## BRITISH WEST INDIES

Lot	Description	Valuation	Stamps
	12.34 p.m.		
Jamaica—continued			
282	Postal Stationery: Registered envelopes: 1912 2d. (three used). Postcards: 1877 3d. red handstamp (scarce), 1877-83 ½d. (4, two used) and reply, 1d. (3, two used) and reply, 1½d. and reply, 1891 ½d. provisional and 1d. blue (2, one used), also K.E. VII ½d. and reply and 1d. and 1912 K.G. V 1d. used and ½d. wrapper (1888)	50/-	23
282a	LEEWARD ISLANDS: The attractive collection (15) of postal stationery with Antigua (8), Dominica (9), Montserrat (8), Nevis (6), St. Christopher (5), St. Kitts-Nevis (4) and Virgin Islands (4) with two used	£5	57

### THE END OF THE FIRST SESSION

## Second Session at 2 p.m. precisely

### Montserrat

283	1876 wmk. CC 1d. (two pairs and a used single); 1884-85 CA perf. 14 1d. (two pairs), 2½d. red-brown and 2½d. ultramarine, strip of four, and 1884 CA perf. 12 1d., unused or mint. Cat. 290/-	£5	15
284	— 1d. red, a bisect well tied to small piece. With R.P.S. certificate. Cat. £15	£6	1
285*	— Ditto, a similar bisect used on 1883 COVER to Dominica, endorsed "Circular". Cat. £15 (see Photo Plate XII)	£10	1
286*	— Ditto, a similar COVER to St. Kitts, endorsed "Book Post" (see Photo Plate XII)	£10	1
287*	— Ditto, five bisects, two in pairs, used on 1883 COVER to Dominica, endorsed "Per New York City". Cat. £75	£25	5
288	— Ditto, variety inverted "S" included in a superb used pair with normal. With R.P.S. certificate. Cat. £25 (see Photo Plate I, also in colour)	£18	2
289	— 1d. red and 6d. green in fine used strips of three. Cat. 127/6	£6	6
290	— 6d. green, a mint block with sheet margin at left. Cat. £8	£7	4
291	— Ditto, the inverted "S" variety included in a mint block with normals. Cat. £40 (see Photo Plate I, also in colour)	£35	4
292	— Ditto, the same variety superb unused with original gum. Cat. £40 (see Photo Plate I, also in colour)	£25	1
293*	— Ditto, a bisect used on 1883 COVER to St. Kitts. With R.P.S. certificate confirming the cancellation but expressing no opinion on the status (see Photo Plate XII) <i>NOTE: In our opinion this cover is above reproach and represents two-thirds of the sixpence stamp used for the ½d. rate</i>	£50	1
294*	— Ditto, a third of a stamp used on the same day (DE 15 83) on the front of a COVER to St. Kitts. A great rarity (see Photo Plate XII) <i>NOTE: The above is the front of a circular—presumably double weight—hence one-third of sixpence equalling twopence. Lots 293 and 294 are from different writers to different addresses</i>	£45	1

\* Covers



BRITISH WEST INDIES

Lot	Description	Valuation	Stamps
	Montserrat 1876 Wmk. CC—continued		24 p.m.
295	— 6d. blue-green, superb unused, a slight gum crease. Cat. £20 (see Photo Plate VIII)	£10	1
296	— Ditto, a MINT BLOCK, superb but for slight crease. Cat. £80 (see Photo Plate I, also in colour)	£55	4
297	1880 CC 2½d. red-brown, superb mint. Cat. £8	90/-	1
298	— Ditto, two shades of red-brown, and 4d. blue, fine unused copies with traces of original gum. Cat. £15	110/-	3
299	— Ditto, with 4d. blue and 1884-85 CA 2½d. and 4d. in the same colours, good to fine used. Cat. £20	£10	4
300	1884-85 wmk. CA perf. 14 ½d. dull green, 1d. red, 2½d. ultramarine and 4d. mauve in fine mint blocks of four, the last a corner block with plate number. Cat. £7	£4	16
301	— 1d. red and 1d. rose-red in mint blocks, the first with corner margins. Cat. £5	70/-	8
302	— 1d. red, variety "S" inverted, superb unused. Unpriced (see Photo Plate I, also in colour)	£25	1
303	— 2½d. red-brown, a superb mint BLOCK. Cat. £16 (see Photo Plate VIII)	£14	4
304	— 4d. blue, a fine unused copy with traces of original gum. Cat. £35 (see Photo Plate VIII)	£10	1
305	— Ditto, a very fine and lightly cancelled copy. Cat. £10	£6	1
306	1884 CA 12 1d. red, variety "S" inverted, mint. With R.P.S. certificate. Unpriced (see Photo Plate I, also in colour)	£25	1
307	— Ditto, a fine used copy of the same variety. With R.P.S. certificate (see Photo Plate VIII)	£25	1
308*	— Ditto, five bisects used on 1884 fronts to Dominica. Cat. £90 (see Photo Plate XII)	£35	5

NEVIS

309	ENGRAVED PROOFS 1d. blue-green, a complete SHEET on card	£10	12
310	— 4d. lavender-blue, a complete SHEET on card	£10	12
311	— 4d. indigo, a complete SHEET on thin wove paper	£12	12
312	— 6d. orange, a complete SHEET on card	£10	12
313	— 1/- lake, a complete SHEET on card	£10	12
314	— 1/- dark green, a complete SHEET on thin wove paper	£12	12
315	1861 perf. 13 blued paper 6d. grey-lilac, superb unused. With R.P.S. certificate. Cat. £20 (see Photo Plate VIII)	£12	1
316	— On greyish paper 1d. dull lake, 4d. rose and 6d. grey, fine mint, a few perfs. blunt, the last stamp slightly gum-stained. Cat. £10	£5	3
317	— 1d. dull lake and 4d. rose unused and 6d. grey (2) and 1/- green fine used. Cat. £17	£7	5
318*	— 4d. rose, a slightly torn copy fine used on torn cover, and 1/- green, fine used, corner perf. missing	£10	2
319	1866 engraved on white paper 1d. pale red, 4d. orange (a few perfs. blunt), 4d. deep orange and 1/- blue-green, very fine used, the last creased and a few perfs. stained. Cat. £11	£5	4
320	— 1d. deep red and 4d. deep orange; also 1876 lithographed 1d. (three shades); fine unused copies with nearly full original gum. Cat. £10	90/-	5

\*Covers

PLATE I



4

302

288

306

292



291

3

296



197

524

252

203

265



2

13

30

34

35

NEVIS

Lot	Description	Valuation	Stamps
	1856 White Paper—continued	2.13 p.m.	
321	— 1d. deep red, a very fine lightly cancelled horizontal strip. Cat. £6	£6	3
322	— Ditto, a <b>COMPLETE SHEET</b> , lightly cancelled; slightly severed in three places, one stamp stained on face, one stamp torn, but unique (see Photo Plate IX)	£50	12
323	— 4d. deep orange, a <b>COMPLETE MINT SHEET</b> , margins partially severed. Cat. £54 (see Photo Plate IX)	£45	12
324	— 1/- blue-green, a fine mint copy, a few perfs. blunted and slightly stained. Cat. £16	£6	1
325	— Ditto, and 1/- yellow-green, fine used; the first has a small thin spot. Cat. 370/-	£9	2
326	— 1/- deep yellow-green, a <b>MINT PAIR</b> from the S.E. corner of the sheet, one the cross on hill. Cat. £80 as normal (see Photo Plate VIII)	£70	2
327	— Ditto, <b>LAI D PAPER</b> , a beautiful used copy, superb but for a tiny crease at S.E. corner. With R.P.S. certificate. Cat. £400 (see Photo Plate VIII)	£175	1

**1876 Lithographed, perf. 15**

328	1d. pale brown-red, a complete mint sheet with flaws on Nos. 5 and 12, small rub on face of one stamp and some gum disturbance (transfer 1, pane 4). Cat. 210/-	£6	12
329	— Ditto, a similar sheet but without flaws, slightly gum-stained (transfer 1, pane 1). Cat. 210/-	£5	12
330	— Ditto, a similar sheet	£5	12
331	— Ditto, a similar sheet	£5	12
332	— Ditto, variety bisected vertically, very fine used on small piece with two 1882 CA 1d. lilac-mauve as a 2½d. rate. With R.P.S. certificate	£5	3
333	— Ditto, a complete <b>IMPERFORATE SHEET</b> , ungummed and fine. Cat. £36 (see Photo Plate IX)	£30	12
334	1d. deep rose-red, a complete mint sheet; two stamps torn, one stamp creased (transfer 1, pane 4). Cat. £15	£7	12
335	1d. vermilion-red, a complete mint sheet	130/-	12
336	— Ditto, a similar sheet: two stamps creased, one with small gum disturbance, small flaws on Nos. 4 and 10 (pane 16)	£6	12
337	<b>Retouches:</b> 1d. pale rose-red, a complete <b>MINT SHEET</b> showing the prominent hill retouch on No. 1 and right upper corner star and border below retouched on No. 3 (this stamp has been slightly bruised on face), small flaw on No. 12 (see Photo Plate IX)	£20	12
338	— Ditto, a similar sheet, No. 3 thinned and No. 12 gum-creased	£15	12
339	— Ditto, No. 1 with hill retouch in pair with No. 2, also No. 12, rather off centre, all fine mint. Cat. £17	£7	3

PLATE II



35



72



36



85



155



42

45

47

52

64

65

74

76

95

98

PLATE III



96

97

99



163

164



105

118

119

121

123

125



120



156



167



PLATE V



174

177

179

182



201

186

178

204

200



193

194

196

198



208

209

211

210

224



216  
228

218  
230

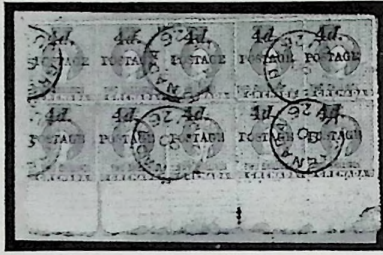
219  
232

220  
235

222  
237

226  
242

PLATE VI



229



380



249



388



518

476



655



525



623



626



PLATE VII



233



267

280



251

266

270



254

255

250

272

270

276

277

PLATE VIII



295

343

304

303

307

358

315

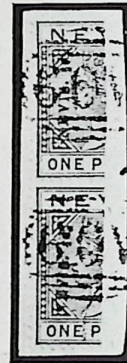
359



326



327



354



373

385

377



389



393

394

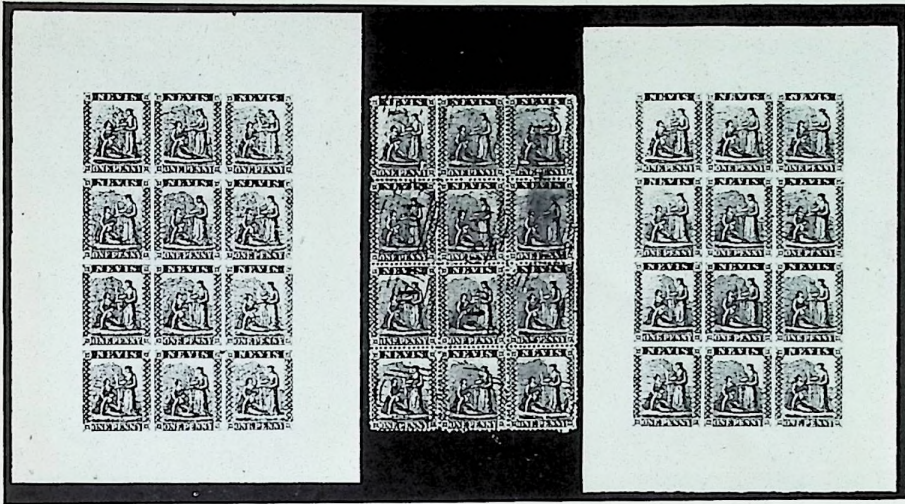
401

397

421

395

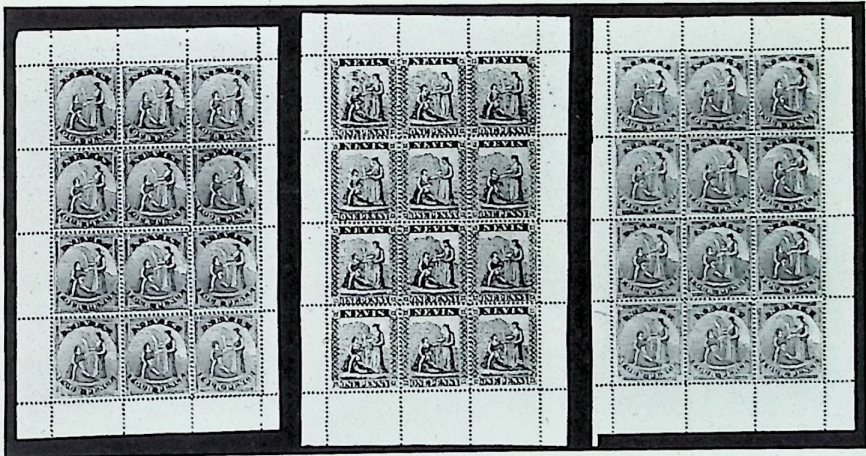
PLATE IX



323

322

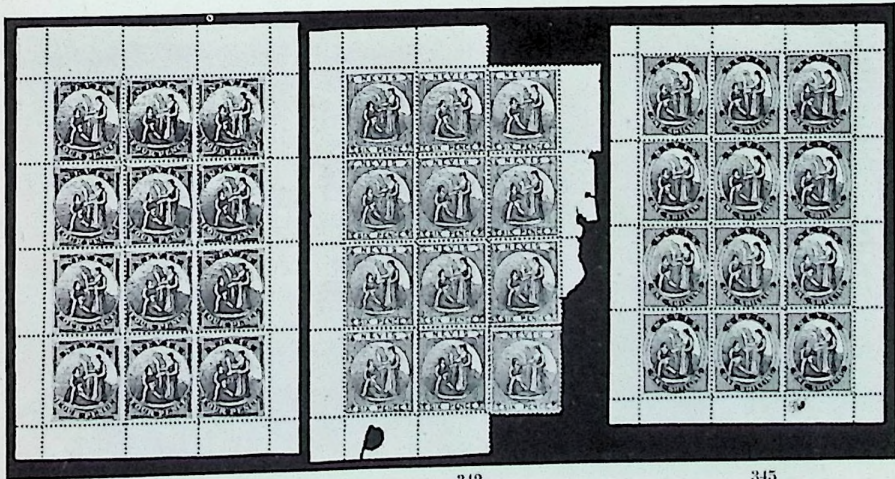
347



323

337

340



341

342

345

PLATE X



309

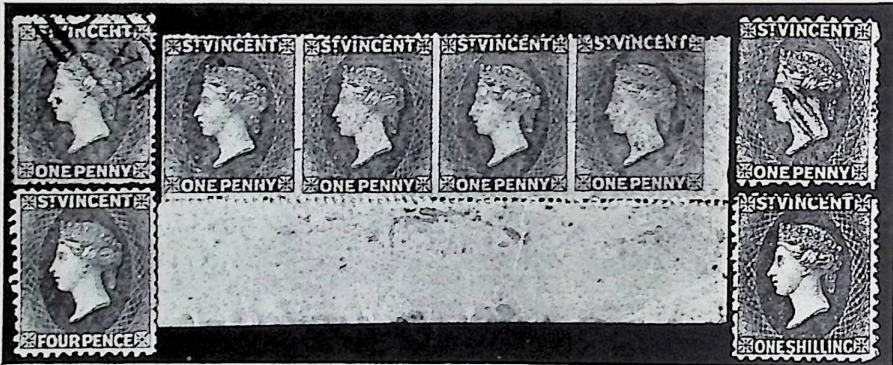


428

429

432

430



434

452

435

449

463



Ex 450

486

461

464

469

481

487



470

456

520

465

471

PLATE XI



493                      496                      498                      499                      501                      515



491                      503                      492                      495                      504                      497



480    478    490



552                      547                      534                      535                      548                      553  
 543                      541                      551                      542

PLATE XIII



565                      566                      567                      568                      569                      570  
 571                      572                      573                      574                      575                      577



587    594    615



578                      584                      500                      585                      579  
 580                      603                                           607                      608

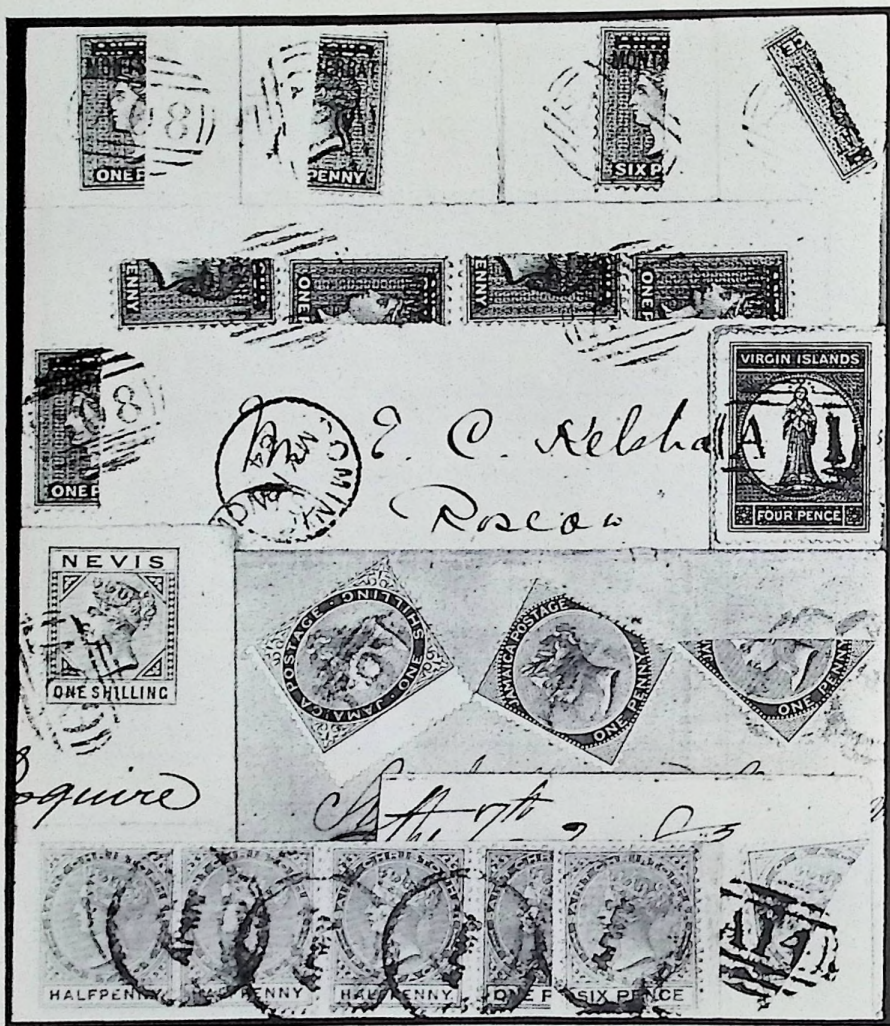
PLATE XII

285

286

293

294



308

638

360

258

375

540



627

644

670

674

PLATE XIV



624

647

631

643

632

634

666

675



636



640



667



NEVIS

Lot	Description	Valuation	Stamps
1876 Lithographed Perf. 15—continued			
		2.19 p.m.	
340	4d. orange-yellow, a brilliant complete MINT SHEET. Cat. £180 (see Photo Plate IX)	£80	12
341	— Ditto, a similar MINT SHEET, equally superb (see Photo Plate IX)	£80	12
342	6d. grey, a complete MINT SHEET except No. 12 (added), one stamp small thin spot and sheet margins defective. Cat. £180 (see Photo Plate IX)	£90	12
343	1/- pale green, horizontal marginal pair, Nos. 8 and 9 in sheet, the last with crossed lines on hill; unused with nearly full original gum. Cat. £20 (see Photo Plate VIII)	£10	2
344	— Ditto, a mint marginal BLOCK, one stamp with slight gum disturbance. Cat. £16	£10	4
345	1/- deep green, a superb complete MINT SHEET. Cat. £48 (see Photo Plate IX)	£45	12
346	1878 lithographed perf. 11½ 1d. vermilion-red, a complete mint sheet with nearly full original gum; small ink mark on No. 3, no sheet margins. Cat. £24	£14	12
347	— Ditto, variety IMPERFORATE, a complete ungummed sheet with margins. Cat. £36 (see Photo Plate IX)	£30	12
348	1879-80 wmk. CC 1d. and 2½d.; 1882 CA 1d. (thin spot) to 4d. complete and 1883-90 CA 1d. carmine, 2½d. (used), 4d., 6d. green (unused) and 1/-; fine unused or mint. Cat. £37	£12	10
349	— 2½d. red-brown, vertical marginal pair, very fine mint. Cat. £7	110/-	2
350	1882 wmk. CA 1d. lilac-mauve, a pair fine used on piece with 1882 1d. (CC wmk.) overprinted "REVENUE" bisected vertically	£4	3
351	— Ditto, a strip fine used on small piece. Cat. 85/-	£3	4
352	— Ditto, variety bisected vertically, lightly cancelled and used on small piece with two normals; one normal has a few perfs. stained	£5	3
353	1883 provisional bisects: ½d. in violet on half 1d. lilac-mauve, a pair reading downwards and a single reading upwards, and in black, a single reading upwards, superb used on three pieces. Cat. 305/-	£6	4
354	— Ditto, a superb used vertical pair on piece, the upper stamp variety DOUBLE SURCHARGE. With R.P.S. certificate. Cat. £32 (see Photo Plate VIII)	£15	2
355*	— ½d. in black on half 1d. lilac-mauve, reading downwards, fine used on cover to St. Kitts	75/-	1
356*	— Ditto, a very similar cover with R.P.S. certificate	75/-	1
357	1883-90 wmk. CA ½d. dull green, 1d. carmine, 2½d. ultramarine and 6d. chestnut in fine mint blocks of four. Cat. £7	70/-	16
358	— 6d. green, a very fresh unused copy with part original gum. Cat. £20 (see Photo Plate VIII)	£11	1
359	— Ditto, very fine used. Cat. £20 (see Photo Plate VIII)	£9	1
360*	— 1/- pale violet, superb used on registered COVER addressed to the Channel Islands. With R.P.S. certificate. Cat. £15 (see Photo Plate XII)	£15	1

\* Covers

BRITISH WEST INDIES

Lot	Description	Valuation Stamps	
	Nevis—continued	2.26 p.m.	
361	Fiscals used for postage: 1882 1d. rose overprinted "Revenue", a complete mint sheet, partially severed, one stamp creased, and 1d. CC unused, 4d. CA mint and 6d. green, corner block overprinted "REVENUE". Cat. 370/-	£7	18
<b>St. Christopher</b>			
362	1870 wmk. CC perf. 12½ 1d. dull rose (2), 1d. magenta and 1d. pale magenta and 6d. yellow-green, perf. 14 1d. (both shades) and 6d.; also 1882-90 wmk. CA ½d., 1d. carmine-rose, 2½d. ultramarine, 4d. grey, 6d. and 1/- (both shades); all fine mint. Cat. 445/-	£10	15
363	— Ditto, 1d. magenta, 6d. green and 6d. yellow-green and 1882-90 wmk. CA 1d. dull magenta (tiny defect) and 1/- mauve, all fine used. Cat. 170/6	90/-	5
364	— Ditto, 1d. magenta, a fine used horizontal strip of three, and 6d. yellow-green, a similar strip of four, a few perfs. blunted but rare in strips. Cat. 76/-	70/-	7
365	— Ditto, 1d. magenta, a magnificent mint block (3×2); rare. Cat. 150/-	£8	2
366	— Ditto, 6d. green, a brilliant mint corner BLOCK with serial number. Cat. £12	£15	4
367*	— Ditto, 6d. yellow-green fine used on cover but with foxed perfs. and 1888 "ONE PENNY" on 2½d. superb used on official entire to Nevis	£4	2
368	— Perf. 14 1d. magenta (strip of three) and pale magenta (strip of four and a pair, the latter a little stained) and 6d. green, a strip of four, all fine used, the last on small piece. Cat. 167/-	£5	13
369	— Ditto, 6d. green, a very fine mint block, perfectly centred but with slight gum stain on one stamp. Cat. £4	£3	4
370	1879 wmk. CC perf. 14 2½d. red-brown and 4d. blue, the former with one perf. blunt, both fine unused. Cat. £9	£4	2
371	— Ditto, 4d. blue, a very fine mint corner BLOCK with serial number, one stamp with small thin	£20	4
372	1882-90 wmk. CA ½d. dull green, 1d. carmine-rose and 4d. grey, complete sheets of each, mint and with marginal numerals. Cat. £10	£5	60
373	— 1d. dull magenta, a fine mint copy centred slightly to top. Cat. £18 (see Photo Plate VIII)	£10	1
374	— Ditto, a fine used pair, one stamp slightly stained. Cat. 150/-	£5	2
375*	— But variety bisected vertically, used on a rather scrubby front with three ½d.'s and CC 6d. perf. 14 to England; the address is partly erased (see Photo Plate XII)	£10	5
376	— 2½d. pale and deep red-brown, fine unused examples, the latter with a few perfs. stained. Cat. £16	£7	2
377	— 4d. blue, a fine copy of this rare stamp, MINT but with slight gum stain. Cat. £25 (see Photo Plate VIII)	£14	1
378	— 6d. olive-brown, a superb mint marginal BLOCK (2×4) showing plate and serial numbers. Cat. £20	£10	8
379	1885 "½d" on half of 1d. and "4d" on 6d. with and without full stop after "PENCE", 1886 1d. on 6d. (pair), 1887 1d. on ½d., 1888 1d. on 2½d. and Revenue 1885 1d., 6d. and 5/-, all mint, and 1886 4d. on 6d. used. Cat. £17	£7	11

\* Covers

CLIENTS ARE EARNESTLY REQUESTED TO RETURN  
LOTS FOR INSPECTION WITHIN 24 HOURS OF RECEIPT

BRITISH WEST INDIES

Lot	Description	Valuation Stamps	
St. Christopher 1885—continued <span style="float: right;">2.32 p.m.</span>			
380	— "Halfpenny" on half 1d. carmine-rose, a superb mint block (4×2) of whole stamps comprising eight <b>UNSEVERED PAIRS</b> (see Photo Plate VI)	£30	16
381	— Ditto, a fine strip, two adjacent stamps showing the variety <b>SURCHARGE INVERTED</b> ; mint but the normal has a small defect. Cat. 635/-	£12	3
382	— Ditto, a fine pair with the same variety fine used on large registered piece, a little stained. Cat. £30	£10	2
383	— Ditto, a fine used example of the variety <b>SURCHARGE DOUBLE</b> but with insignificant thin. Uncatalogued. With R.P.S. certificate	£15	1
384	1886 "ONE PENNY" on 6d. and 4d. on 6d. green, both fine mint <b>BLOCKS</b> of four. Cat. 310/-	£10	8
385	— 4d. on 6d. green, a mint <b>PAIR</b> , one stamp variety no stop after "d". With R.P.S. certificate. Cat. £18 (see Photo Plate VIII)	£10	2
386	— Ditto, a similar pair but with a length of stamp edging adhering to the gum. With R.P.S. certificate	£9	2
387	— Ditto, a single unused copy of the same variety. Cat. £15	£6	1
388	1888 "ONE PENNY" on 2½d. ultramarine, a superb mint <b>BLOCK</b> (4×2) showing clearly the method of cancelling the old value by manually ruled pen-strokes. Cat. £22 (see Photo Plate VI)	£20	8
389	— Ditto, variety <b>SURCHARGE INVERTED</b> , a very fine used example. With R.P.S. certificate. Cat. £150 (see Photo Plate VIII)	£70	1
390	Antigua stamps used in St. Christopher: 1884-86 1d. of Antigua used with 1882-90 4d. grey of St. Christopher on small piece, with R.P.S. certificate, also two pairs of the same 1d., all three items clearly cancelled "A12" within bars	£8	6
<b>St. Lucia</b>			
391	1860 wmk. Small Star 1d., 4d. blue (cracked), 6d. green (oily) and deep green (2, both repaired), the first stamp unused; 1863 CC 1d. and 6d. and 1d. on 6d., all unused; 1864 CC perf. 12½ 6d. mauve, perf. 14 1d. (2), 4d. and 1/- and 1882-84 CA 6d., all used. Cat. £107	£12	14
392	— 1d. rose-red, fine used. Cat. 67/6	£2	1
393	— Ditto, a superb <b>BLOCK</b> , unused with mostly original gum and perfectly centred (see Photo Plate VIII)	£15	4
394	— 4d. blue, a very fine used copy. Cat. £20 (see Photo Plate VIII)	£9	1
395	— Ditto, an unused <b>BLOCK</b> with mostly original gum; bottom pair has insignificant crease. Of great rarity and a brilliant item. Cat. £80 (see Photo Plate VIII)	£65	4
396	— 6d. green, a fine unused copy. Cat. £20	£8	1
397	— 6d. deep green, very fine used, showing a portion of red cancellation. Cat. £18 (see Photo Plate VIII)	£8	1
398	1863 wmk. CC 1d. lake, 4d. indigo and 6d. emerald-green, all unused with nearly full original gum, the last with a few perfs. stained. Cat. £20	£9	3
399	— 1d. lake, an unused <b>BLOCK</b> (3×2) with original gum; of fine appearance and great rarity but with perfs. blunted at left. Cat. £18 (see Photo Plate X)	£20	6
400	— 6d. emerald-green, two copies, both fine unused, one with gum. Cat. £24	£10	2

## ST. LUCIA

Lot	Description	Valuation Stamps	
	1863 Wmk. CC—continued	2.39 p.m.	
401	— "Six pence" on 1d. indigo, a fine UNUSED copy with original gum, tiny marginal thin. With B.P.A. certificate. Cat. £40 (see Photo Plate VIII)	£22	1
402	1864 wmk. CC perf. 12½ 1d. black, a fine block, and 1d. intense black, a pair, both mint but slightly stained. Cat. 110/-	£5	6
403	— 1d. black, 1d. intense black and 4d. yellow, all unused with traces of original gum. Cat. 277/6	£5	3
404	— 4d. yellow, 4d. chrome-yellow, 6d. mauve, 1/- brown-orange and 1/- orange, fine used copies, the first stamp with a few perfs. short. Cat. 235/-	£5	5
405	— 4d. yellow, superb mint but a few perfs. pulled at bottom. Cat. £12	£5	1
406	— 6d. violet, a partly severed vertical pair; centred to left and a little foxed but a great part original gum. Cat. £7	£4	2
407	— 6d. deep lilac, fine unused with nearly full original gum. Cat. £10	£4	1
408	— 1/- brown-orange, mint but a few perfs. blunted. Cat. £12	£6	1
409	— Perf. 14 1d. black, 4d. yellow, 6d. mauve and 6d. pale lilac, fine unused or mint. Cat. 290/-	£6	4
410	— 6d. mauve and 6d. pale lilac, fine unused with nearly full original gum, a few perfs. foxed. Cat. £10	£5	2
411	— 6d. mauve and 1/- orange, fine used horizontal pairs; the latter has a few blunted perfs. Cat. 145/-	£5	4
412	— 1/- deep orange, fine unused with nearly full original gum. Cat. £12	£5	1
413	1881 wmk. CC perf. 14 surcharged ½d. green and 2½d. brown-red and 1882-84 CA perf. 14 ½d. green, 1d. black and 6d. violet, all unused with traces of original gum. Cat. 145/-	£3	5
414	1882-84 wmk. CA perf. 14 surcharged 1d. black, a superb mint horizontal corner pair with margin attached	50/-	2
415	— 4d. yellow, fine unused with nearly full original gum, centred to upper left. Cat. £10	£4	1
416	— 1/- orange, fine unused with nearly full original gum but has small ink mark on gum; centred to lower left. Cat. £20	£9	1
417	— Perf. 12 4d. yellow, fine mint but centred slightly to upper right and a few perfs. stained. Cat. £20	£7	1
418	1882-86 wmk. CA die I ½d. to 4d. (3, one used); also 1886-87 die I 1d. to 1/- and 1891-98 die II ½d. to 10/- (4d. and 1/- used, the latter poor) complete unused or mint. Cat. £16	£6	20
419	— 6d. lilac, unused with nearly full original gum, two perfs. stained. Cat. £12	£5	1
420	— Ditto, fine used but slight corner crease. Cat. £15	£6	1
421	— 1/- orange-brown, fine unused with a greater part original gum. Cat. £20 (see Photo Plate VIII)	£10	1
422	1886-87 die I 6d. and 1891-98 die II ½d. to 1/- in superb mint plate corner blocks of four. Cat. 217/-	£6	36
423	1891-92 provisionals: Die I ½d. on 3d. unused with slightly smudged surcharge, ½d. on half 6d. (2, used on small piece), 1d. on 4d. (3, one used) and die II ½d. on 3d. fine mint. Cat. 262/-	£5	7
424	— Die I ½d. on 3d. used on small piece, also ½d. on half 6d. and 1d. on 4d. (pair, one stamp corner perf. torn) used on piece together with a die II 3d. Cat. 139/6	£3	5
425	— Ditto, "½d." on half 6d., four bisects used together on small piece, well tied, one stamp showing "1" with sloping serif	£5	4
426*	— Ditto, as last, a marginal copy fine used on a prospectus showing variety "no fraction bar". Cat. 75/-	50/-	1
427	— Ditto, "ONE PENNY" on 4d., a remarkable used block (6×4), small margin at left; some stamps show slight doubling of the surcharge. Cat. 288/-	£6	24

\* Cover

**BRITISH WEST INDIES**

Lot	Description	Valuation Stamps	
	St. Lucia 1801-02 Provisionals—continued	2.48 p.m.	
428	— Die II "ONE HALF PENNY" on 3d., a fine used copy showing variety SURCHARGE DOUBLE on face and with additional surcharge on back; rubbed at top and one perf. stained but very rare. With R.P.S. certificate stating that "it appears to be genuine" (see Photo Plate X)	£20	1
429	— Ditto, a superb used example of the variety SURCHARGE INVERTED, well tied to small piece. With R.P.S. certificate. Cat. £45 (see Photo Plate X)	£30	1
430	— Ditto, a similar lot but not tied and some perfs. slightly foxed. With R.P.S. certificate stating "that it appears to be genuine" (see Photo Plate X)	£15	1
431	Fiscal stamps: 1881 wmk. CC surcharged in small capitals "ONE PENNY STAMP", black, two singles and a partly severed pair used together on a dated piece; a few perfs. blunted but scarce. Cat. 70/-	50/-	4
432	— Surcharged "SHILDING STAMP" on the 1/- orange, unused and showing the error officially corrected; centred to upper left. With R.P.S. certificate. Cat. £35 (see Photo Plate X)	£15	1
433	Postal Stationery: Envelope, 1900 1d., and Registered envelope 2d. (2, one used). Postcards: 1883 1d. (2, one used), 1½d. and reply and reply used from Birmingham and 1905 1d. Wrappers: 1887 ½d. and 1d.	£3	11

**St. Vincent**

*All stamps cancelled "A10" in black unless described to the contrary*

**No Watermark**

434	1861 intermediate perf. 14 to 16 1d. rose-red, superb used, cancellation clear of profile; a few rough perfs. Cat. £15 (see Photo Plate X)	£8	1
435	— Ditto, variety IMPERF. VERTICALLY, a fine unused strip from the S.E. corner of the sheet with original gum but slightly stained and creased. With R.P.S. certificate. Cat. £100 (see Photo Plate X)	£40	4
436	— 6d. deep yellow-green on piece and rough perf. 6d. deep green, fine used. Cat. 110/-	50/-	2
437	— Ditto, the same two stamps and 1866 perf. 11 to 12½ 4d. deep blue, all fine used. Cat. 205/-	90/-	3
438	1862 rough perf. 14 to 16 1d. rose-red, unused and a trifle stained; 6d. deep green, fine used, and 1863-66 variety imperf. 1d. rose-red with original gum. Cat. 165/-	70/-	3
439	— 1d. rose-red, fine used strip on piece but somewhat discoloured by climate	£6	5
440	— 6d. deep green, a mint pair; 1863-66 perf. 11 to 12½ 1d. rose-red, a mint vertical pair, and variety imperf. 1d. rose-red, a mint PAIR. Cat. £18	£10	6
441	— 6d. deep green, a superb mint block. Cat. £12	£9	4
442	— Ditto, a very pretty used pair	70/-	2
443	— Ditto, and 1863-66 6d. deep green in fine used pairs. Rare in this condition; the last pair has a few perfs. blunted on one stamp. Cat. £11	£12	4
444	— Ditto, a fine used strip, centred to top; small crease. Cat. 90/-	£5	3
445	— Ditto, a used strip with an over-inked obliteration, staining the stamps, but scarce	£5	4

ST. VINCENT

Lot	Description	Valuation Stamps	
	No Watermark—continued	2.54 p.m.	
446	1863-66 perf. 11 to 12½ 1d. rose-red, a superb mint block (2×3). Cat. 165/-	£5	6
447	— 6d. deep green, superb mint, centred slightly to right. Cat. £15	130/-	1
448	— Ditto (a few perfs. blunt), and 1866 perf. 11 to 12½ 4d. deep blue, both centred to lower right but with original gum. Cat. £30	£9	2
449	— Perf. 11 to 12½×14 to 16 1d. rose-red, very fine and lightly cancelled, centred slightly to left. With R.P.S. certificate. Cat. £50 (see Photo Plate X)	£30	1
450	— IMPERFORATE 1d. rose-red and 6d. deep green in mint pairs, the first with sheet margin at foot, the last close one corner, otherwise good margins. Cat. £39 10/- (for 6d. see Photo Plate X)	£24	4
451	— Ditto, 1d. rose-red, a fine unused block with good to large margins, one stamp creased. Cat. £19	£9	4
452	1866 perf. 11-12½ 4d. deep blue, fine unused with original gum and well centred; a lovely colour. Cat. £15 (see Photo Plate X)	£12	1
453	— Ditto, a similar copy but colour not quite so fine, with traces of original gum, centred slightly to left	£8	1
454	— Ditto, a very similar copy with nearly full original gum, centred high	£6	1
455	— Ditto, also perf. 14 to 16 1/- slate-grey and perf. 11 to 12½×14 to 16 1/- slate-grey, all fine used; the last two stamps have small closed tears and the last is slightly creased. Cat. 275/-	90/-	3
456	— 1/- slate-grey, superb UNUSED but slightly off centre. Cat. £75 (see Photo Plate X, also in colour)	£45	1
457	— Perf. 14 to 16 1/- slate-grey, fine unused with a great part original gum, centred slightly to upper right, small gum-staining. Cat. £18	£8	1
458	— Ditto, as last, prettily cancelled "A10" in brown. Cat. £5	50/-	1
459	— Perf. 11 to 12½×14 to 16 1/- slate-grey, unused with a greater part original gum; well centred but perfs. a little stained. Cat. £18	£9	1
460	1868 perf. 11 to 12½ 4d. yellow, fine unused with original gum and large for this stamp. Cat. £10	£5	1
461	— Ditto, a superb unused PAIR with a great part original gum. Cat. £20 (see Photo Plate X)	£18	2
462	— Ditto, a fine copy cancelled "A10" in red, centred slightly to left. Cat. 90/-	50/-	1
463	— 1/- indigo, superb unused with original gum and well centred for this stamp. Cat. £22 (see Photo Plate X)	£14	1
464	— Ditto, a very similar copy, slightly greyer in shade (see Photo Plate X)	£12	1
465	— 1/- brown, very fresh unused and well centred for this stamp, one perf. pulled. Cat. £35 (see Photo Plate X, also in colour)	£20	1
466	— Ditto, lightly cancelled and well centred. Cat. £10	£6	1
<b>Watermark Small Star</b>			
467	1871 rough perf. 14 to 16 1d. black and 6d. blue-green; 1872 perf. 11 to 12½ 1/- lilac-red and 1872-73 clean cut perf. about 15 1d. black and 6d. blue-green and 6d. dull blue-green; good to fine used, the first and last three stamps cancelled "A10" in red, except one with datestamp in red. Cat. £16	£6	6
468	— 1d. black, a single and a strip, unused with original gum, well centred	£7	4
469	— 6d. blue-green, very fine mint and well centred, a few perfs. rough. Cat. £20 (see Photo Plate X)	£12	1

## ST. VINCENT

Lot	Description	Valuation Stamps	
	Watermark Small Star—continued	3-2 p.m.	
470	1872 perf. 11-12½ 1/- lilac-red, superb UNUSED with original gum. Cat. £70 (see Photo Plate X, also in colour)	£40	1
471	— Ditto, a very similar copy. Cat. £70 (see Photo Plate X, also in colour)	£40	1
472	— Ditto, a fine well centred used copy, lightly cancelled	90/-	1
473	— Ditto, a very similar copy; the cancellation is clear of the profile, a few perfs. blunt. Cat. £5	90/-	1
474	— Ditto, also 1873-74 perf. 11 to 12½ × 15 1/- lilac-rose and 1875 perf. 11 to 12½ 1/- claret, fine used, the last two stamps cancelled in red. Cat. £30	£10	3
475	1872-73 clean cut perf. about 15 Gd. blue-green and 1877 Gd. pale yellow-green, attractive dated copies, the first cancelled in red. Cat. 110/-	90/-	2
476	1873-74 perf. 11 to 12½ × 15 1d. black, a mint corner block (see Photo Plate VI)	£12	4
477	— 1/- lilac-rose, centred to left, cancellation rather heavy. Cat. £15	£6	1
478	1875 perf. 11 to 12½ 1/- claret, a remarkable UNUSED CORNER PAIR with original gum; slightly stained but a beautiful colour. Cat. £90 (see Photo Plate XI, also in colour)	£100	2
479	— Ditto, a nice used copy, well centred and cancelled in red. Cat. £10	£6	1
480	— Ditto, a very similar copy cancelled "A10" in red	90/-	1
481	1877 perf. 11-12½ × 15 Gd. pale yellow-green, fine unused with original gum, centred to upper right; small gum crease but of wonderful colour. Cat. £22 (see Photo Plate X)	£12	1
482	— Ditto, and 1/- vermilion; 1877 clean cut perf. about 15 Gd. pale yellow-green (with R.P.S. certificate stating that it is "no watermark" on margin of paper); 1877 perf. 11 to 12½ 4d. deep blue and 1880 perf. 11 to 12½ 6d. bright green and 1/- bright vermilion; all fine used, the first stamp cancelled in red, the 4d. on piece. Cat. 390/-	£8	6
483	— Clean cut perf. about 15 Gd. pale yellow-green and 1880 perf. 11 to 12½ 6d. bright green and 1/- bright vermilion, all fine used. Cat. 195/-	95/-	3
484	— Perf. 11 to 12½ 4d. deep blue, fine unused with traces of original gum and full colour. Cat. £22	£11	1
485	— Ditto, good used copies cancelled "A10" in black and brown respectively; the latter stamp has a corner rounded. Cat. 190/-	£8	2
486	1880 perf. 11½ to 12 1d. olive-green, a mint BLOCK. Cat. £14 (see Photo Plate X)	£15	4
487	— 6d. bright green, mint and well centred, small gum stain. Cat. £22 (see Photo Plate X)	£13	1
488	— 1/- bright vermilion, a good used corner pair with no margins attached. Cat. £7	90/-	2
489	— 5/- rose-red, very fine unused and well centred. With R.P.S. certificate. Cat. £70 (see Photo Plate XI, also in colour)	£45	1
490	— Ditto, very fresh unused but not quite so well centred (see Photo Plate XI, also in colour)	£35	1

## ST. VINCENT

Lot	Description	Valuation	Stamps
	Watermark Small Star—continued		3.9 p.m.
491	1881 "1d" on half 6d. blue-green, a very fine used copy. Cat. £35 (see Photo Plate XI, also in colour)	£25	1
492	— Ditto, a superb unused UNSEVERED PAIR, part gum. With R.P.S. certificate. Cat. £125 (see Photo Plate XI, also in colour)	£80	2
493	— Ditto, another fine unused UNSEVERED PAIR. With R.P.S. certificate (see Photo Plate XI)	£65	2
494	1881 "½d" on half 6d. bright green, superb unused. Cat. £12	£6	1
495	— Ditto, a superb unused unsevered PAIR. Cat. £30 (see Photo Plate XI, also in colour)	£20	2
496	— Ditto, a very fine used unsevered PAIR, a small tear at right. With R.P.S. certificate. Cat. £35 (see Photo Plate XI)	£25	1
	<i>NOTE: This tear is natural and constant on the right half of certain stamps in the setting</i>		
497	— Ditto, variety FRACTION BAR OMITTED, a superb used single (see Photo Plate XI, also in colour)	£80	1
498	— "ONE PENNY" on 6d. bright green, superb unused and well centred. With R.P.S. certificate. Cat. £25 (see Photo Plate XI)	£18	1
499	— Ditto, a similar copy, not quite so well centred. With R.P.S. certificate (see Photo Plate XI)	£14	1
500	— Ditto, a similar copy. With R.P.S. certificate	£14	1
501	— Ditto, a very fine used example. With R.P.S. certificate. Cat. £22 (see Photo Plate XI)	£12	1
502	— Ditto, another fine used but rather off centre. With R.P.S. certificate	£10	1
503	— "4d." on 1/- vermilion, very fine and lightly cancelled. With R.P.S. certificate. Cat. £75 (see Photo Plate XI, also in colour)	£35	1
504	— Ditto, a beautiful dated copy. With R.P.S. certificate (see Photo Plate XI, also in colour)	£38	1
505	1881-97, a mint selection including 1881 Star ½d. and 1d.; 1882-84 CA 2½d. on 1d.; 1885 1d. on 2½d. on 1d. and ½d. (two shades) and 1d.; 1886-89 perf. 14 1d. (two shades), 2½d. on 1d., 4d. lake-brown and 5/- (three shades), perf. 12 ½d., 6d. (fine) and 1/-; 1890 2½d. on 4d.; 1890-91 2½d. on 1d. and 1892 5d. on 4d.; 1890-91 6d. (three shades) and 1/-; 1893 4d. yellow, 5d. on 6d. (three shades) and 1897 2½d., 5d. and 3d. on 1d. Cat. £38	£14	31
506	1881-93, a similar selection in pairs and BLOCKS OF FOUR with 1881 ½d. (block); 1885 1d. on 2½d. on 1d. (pair) and ½d. (two blocks and a pair) and 1d. (block); 1886-89 perf. 14 1d. (two blocks, shades and a pair), 2½d. on 1d. and 4d. (pairs); 1890-91 6d.; 1892 5d. on 4d. and 1893 5d. on 6d. (blocks) with an additional pair of the last. Cat. £17	£10	48
507	— Perf. 11 to 12 ½d. orange, a mint corner block (6x3). Cat. 21G/-	£8	18
508	— Ditto, 1d. drab and 4d. bright blue (2) and 1882-84 CA 1d. drab, 2½d. on 1d. lake and 4d. bright blue, all fine used. Cat. 218/-	90/-	6



## ST. VINCENT

Lot	Description	Valuation Stamps	
<b>Watermark Small Star—continued</b>			
509	1881-92, a used remainder with 1881 4d.; 1885 ½d. (14), 1d. (3) and 4d.; 1886-89 perf. 14 1d. rose (9) and red (10), 6d. (2, one unused, defective), 1/- (2, forged datestamps) and 5/- (3), perf. 12 4d. (3, one dull blue, fine); also 1890-91 2½d. on 1d., 6d. (8) and 1/- and 1897 5d. on piece; condition mostly fine	£6	60
<b>Watermark Crown CA</b>			
510	1882-84 4d. bright blue, a fine pair lightly cancelled and well tied to small piece. Cat. 110/-	£4	2
511	— Ditto, a very similar pair and a single used together on small piece. Cat. 165/-	£6	3
512	1885 perf. 14 ½d. (15) and 1d. (27); 1886-89 perf. 14 1d. rose (4) and red (16) and perf. 12 ½d. (rejoined pair) and 1890-91 6d. (21 shades). All unused or mint and including five pairs, ten blocks of four and two larger blocks. Cat. £11	£4	85
513	— ½d. green (two shades), 1d. rose-red and 1886 1d. red in complete mint sheets. Cat. 375/-	£6	240
514	— ½d. green (10, two blocks and a pair) and 1d. rose-red (pair); 1886-89 perf. 14 1d. red (four pairs), perf. 12 4d. bright blue (pair) and 1890-91 6d. (block); all fine used	110/-	26
515	— 4d. red-brown, fine unused with a great part original gum, centred slightly to right. Cat. £30 (see Photo Plate XI)	£12	1
516	1886-89 perf. 14 1d. rose, a mint corner block (5×3). Cat. 150/-	£4	15
517	— 4d. lake-brown, a mint corner block (4×3), insignificant gum stains	£5	12
518	— 6d. violet, a superb mint corner <b>BLOCK</b> , one perf. gum-stained. Cat. £24 (see Photo Plate VI)	£30	4
519	— 5/- carmine-lake, a mint corner block. Cat. £7	£5	4
520	— Perf. 12 ½d. orange, very fine unused with original gum. <b>With R.P.S. certificate.</b> Cat. £60 (see Photo Plate X, also in colour)	£40	1
521	— 4d. bright blue, 4d. dull blue and 1/- orange-vermilion, very fine used, the first two a little off centre. Cat. 310/-	£7	3
522	— 4d. bright blue, a good pair used on piece	£5	2
523	— 4d. dull blue, a superb used copy with clear profile and well centred. Cat. £10	£7	1
524	— 6d. bright green, a superb mint <b>BLOCK</b> . Cat. £48 (see Photo Plate I, also in colour)	£40	4
525	1890 "2½d." on 4d. lake-brown, the variety no fraction bar included in a mint marginal <b>BLOCK</b> (2×3) with normals. Cat. £33 (see Photo Plate VI)	£22	6
526	1890-91 "2½ PENCE" on 1d. blue and 1893 "FIVE PENCE" on 6d. deep lake, both in mint blocks (5×3) from the S.E. corner of the sheet	£2	30
527	1897 5d. sepia, a mint block with sheet margin three sides. Cat. 375/-	150/-	30
528	<b>Cancellations:</b> 1885 ½d. and 1d. (4) and 1886-89 1d. rose (2) and red (6) showing nine different cancellations including five sub-office datestamps and one "BEQ", all struck in black	£3	13
529	<b>Postal Stationery:</b> Registered envelope: 1893 2d. Postcards: 1884-1902 complete (6). Wrappers: 1893 ½d. and 1d. <b>Turks Islands:</b> Registered envelope 1901 2d., and 1881-92 postcards 1½d. and reply and 1d. (provisional) and reply	30/-	15

## BRITISH WEST INDIES

Lot	Description	Valuation Stamps 3.22 p.m.	
<b>Tobago</b>			
530	1879 wmk. CC 1d. rose, 3d. blue, 6d. orange (marginal pair) and 1/- green, fine unused copies with mostly original gum; the 1d. is slightly gum-stained. Cat. £18	£9	5
531	— 6d. orange and 1885-94 CA 4d., 6d. and 1/- in mint blocks of four, the first block a little gum-stained. Cat. £11	£6	16
532	— Ditto, and 1880 CC ½d.; 1883 2½d. on 6d.; 1882-84 1d.; 1886-89 1d. on 2½d., partly severed pair, and ½d. on 6d. stone, variety figure further from word, and 1891-92 ½d. on 4d.; all fine used, the last a block of four on small piece. Cat. 275/-	£6	11
533	— 6d. orange, a mint block, one gum-stained at back. Cat. £8	£4	4
534	— 5/- slate, superb unused with a greater part original gum. With R.P.S. certificate. Cat. £20 (see Photo Plate XI)	£14	1
535	— £1 mauve, superb UNUSED, a tiny gum crease. With R.P.S. certificate. Cat. £80 (see Photo Plate XI)	£60	1
536	1880 "1d" in manuscript on half of 6d. orange, very fine used. With B.P.A. certificate. Cat. £15	£8	1
537	1880 wmk. CC ½d., 1d., 4d. and 1/-, the last two slightly gum-stained; 1883 2½d. on 6d., variety the large "2" with long tail; 1882-84 CA ½d., 2½d. (2) and 4d. (with part gum); 1885-94 changes of colour ½d., 1d. and 4d., the last showing variety malformed "CE" in "PENICE" but a little discoloured, and 1896 error of colour 1/- orange-brown; all unused or mint. Cat. £23	£8	13
538	1880 CC 14 4d. yellow-green and 6d. stone, superb unused with large part original gum. Cat. 295/-	£7	2
539	— Ditto, fine used copies, the first on dated piece. Cat. 195/-	110/-	2
540	— Ditto, a diagonal bisect well tied to the right half of an envelope. R.P.S. certificate states: "In the absence of the entire envelope, impossible to state that the bisect has been accepted to pay postage". Cat. £16 (see Photo Plate XII)	£15	1
<i>NOTE: We have no doubt that this piece is genuine. Dated 1883, it is addressed to Trinidad</i>			
541	— Ditto, a superb used copy but slightly off centre showing variety malformed "CE" in "PENICE". Uncatalogued (see Photo Plate XI)	£10	1
542	1882-84 CA 4d. yellow-green, variety malformed "CE" in "PENICE", very fine unused, two perfs. blunt at foot. With R.P.S. certificate (see Photo Plate XI)	£25	1
543	— 6d. stone, superb unused with original gum. Cat. £20 (see Photo Plate XI)	£12	1
544	1885-94 CA 4d. grey, a mint corner pair, one stamp the variety malformed "CE" in "PENICE". Cat. 37/6	25/-	2
545	— 1/- olive-yellow, a mint block (6x4) with margins three sides. Cat. £9	£4	24
546	1886-89 provisionals: ½d. on 6d. stone, ½d. on 2½d. (3, including a marginal vertical pair, one stamp the variety figure further from word), ½d. on 6d. orange-brown (2, one with R.P.S. certificate stating "that it is a slipped and not a true double surcharge) and 1d. on 2½d.; good unused or mint copies. Cat. 167/6	70/-	7

**CLIENTS ARE EARNESTLY REQUESTED TO RETURN  
LOTS FOR INSPECTION WITHIN 24 HOURS OF RECEIPT**

BRITISH WEST INDIES

Lot	Description	Valuation Stamps	
Tobago 1886-89 Provisionals—continued <span style="float: right;">3.28 p.m.</span>			
547	— “ $\frac{1}{2}$ PENNY” on 6d. stone, a mint vertical pair, the lower stamp with <b>SURCHARGE INVERTED</b> . With R.P.S. certificate. Cat. £45 10/- (see Photo Plate XI)	£35	2
548	— “ $\frac{1}{2}$ PENNY” on 2½d. dull blue, a mint vertical pair, one stamp with <b>SURCHARGE OMITTED</b> . Uncatalogued. With R.P.S. certificate (see Photo Plate XI)	£30	2
549	— Ditto, a mint block (5×2), one stamp showing the wide spacing variety. Cat. 135/-	70/-	10
550	— “ $\frac{1}{2}$ PENNY” on 6d. orange-brown, a single showing the same variety; gum-stained under mount and creased along top. Cat. £16	£6	1
551	— Ditto, a superb used strip; the right hand stamp shows the rare <b>WIDE SPACING</b> (see Photo Plate XI)	£15	3
552	— Ditto, a mint vertical strip, the centre stamp variety <b>SURCHARGE DOUBLE</b> . With R.P.S. certificate. Cat. £20 15/- (see Photo Plate XI)	£15	3
553	— Ditto, a similar strip including the same variety (see Photo Plate XI)	£15	3
554	<b>1891-92 provisionals</b> : 2½d. on 4d. (2) and ½d. on 4d. grey (3, including a pair); also ½d. on 4d. lilac and carmine, marginal block of six, three stamps showing the variety “ $\frac{1}{2}$ ” and “d” wider apart, one stamp gum-stained; all unused or mint. Cat. 209/-	90/-	11
555	— “ $\frac{1}{4}$ PENNY” on 4d. grey and “2½ PENCE” on 4d. grey, superb unused copies, part gum, both showing the variety malformed “CE” in “PENCE”. Cat. £19	£10	2
556	— “2½ PENCE” on 4d. grey, fine unused with a great part original gum, showing the same variety. With R.P.S. certificate. Cat. £7	£4	1
557	<b>Postal Stationery</b> : 1881-92 complete; includes 2d. Registered envelopes (2) and eight postcards with 1d. used in addition. The two 1892 provisionals are rare	90/-	11

**Trinidad**

558	<b>1851-53 imperf.</b> on blued 1d. purple-brown (3, including a pair), 1d. brownish grey (3, one part gum) and on white 1d. dark grey, all mint. Cat. 145/-	55/-	7
559	— Ditto, a fine block; 1d. blue, an irregular block of seven; 1d. deep blue and on white 1d. dark grey in fine blocks of four; all mint. Cat. 202/6	£6	19
560	— 1d. purple-brown, 1d. deep blue, 1d. brownish grey, 1d. brownish red and on white 1d. deep purple and 1d. rose-red, very fine used copies, three full margined, the others close on one margin. Cat. 230/-	150/-	6
561	— 1d. blue, vertical pair, and 1d. deep blue, horizontal pair, good margins, fine used on two pieces. Cat. £6	90/-	4
562	— 1d. deep blue, a superb mint block (4×4), one stamp close but with sheet margin at top and large margin at right. Cat. 270/-	£6	12
563	— 1d. brownish grey and 1d. brownish red and on white 1d. rose-red (two shades), good used copies, the first stamp a little close at top. Cat. 170/-	£4	4
564	— 1d. rose-red, a superb horizontal used strip with ample margins; suggestion of a crease at back as well as what might be a paper flaw. Cat. 135/-	£8	3

TRINIDAD

Lot

Description

Valuation Stamps

3-34 p.m.

**Lithographs**

565	1852 early impression on yellowish paper 1d. blue, a good used copy with clear margins, tiny thin spot. Cat. £120 (see Photo Plate XIII)	£30	1
566	— 1d. deep blue, a magnificent copy, lightly cancelled, with four ample margins. Cat. £140 (see Photo Plate XIII)	£75	1
567	— Ditto, a very similar copy, cancellation a little heavier (see Photo Plate XIII)	£70	1
568	1853 on bluish cartridge paper 1d. blue, a superb copy, excellent margins and lightly cancelled; traces of offset on reverse. Cat. £140 (see Photo Plate XIII)	£70	1
569	— Ditto, a very similar copy but closer at bottom, with horizontal hair-line extending across lower half of stamp (see Photo Plate XIII)	£60	1
570	1855 on thin paper, less distinct impression, 1d. blue, a fine unused copy with a great part original gum; ample margins on all four sides but with several tiny coloured stains on design and two small ink marks and a corner crease on margins. Shows break in top frame line. Cat. £40 (see Photo Plate XIII)	£20	1
571	— Ditto, fine used with sheet margin at top; large margin at right but close on other sides. Has a similar break to the preceding stamp (see Photo Plate XIII)	£20	1
572	— Ditto, an extremely clearly cancelled copy; large margins except at upper left, just touching design. Shows break retouched. With R.P.S. certificate (see Photo Plate XIII)	£15	1
573	— 1d. deep blue, superb used with good margins; shows wear on left frame. Cat. £45 (see Photo Plate XIII)	£30	1
574	— 1d. greenish blue, a very fine copy, well tied to large piece; three huge margins but touched at foot. Cat. £40 (see Photo Plate XIII)	£10	1
575	1856 on thin paper, only faint traces of lines of background, 1d. blue, a superb used copy with four good margins. Cat. £30 (see Photo Plate XIII)	£15	1
576	— Ditto, a fine used copy, three good margins but touched at foot; slight thinning by mount	90/-	1
577	— 1d. deep blue, a magnificent used copy with large margins. Cat. £35 (see Photo Plate XIII)	£20	1
578	— Ditto, a very similar copy but two margins a little closer cut (see Photo Plate XIII)	£15	1
579	— 1d. grey-blue, a fine used copy; three good margins but close at lower left corner. Cat. £30 (see Photo Plate XIII)	£11	1
580	1860 on thin paper, impression showing none or hardly any lines of background, 1d. grey-blue, a good used copy with three good margins; a small brown stain on reverse shows through to front. Cat. £20	£8	1
581	— 1d. slate, a fine used copy with full margins but rather close in places: creased across one corner. Cat. £25	£8	1
582	— 1d. dull red and 1d. red, two BLOCKS of the former and one of the latter; good margins and mint with the greater part original gum. Cat. £22	£10	12

TRINIDAD

Lot	Description	Valuation	Stamps
		3.40 p.m.	
583	1859 imperf. 4d. grey-lilac, a full-margined copy, unused with part original gum. Cat. £6	£3	1
584	— 6d. yellow-green, fine used with good margins, two large. Cat. £25 (see Photo Plate XIII)	£16	1
585	— 6d. deep green, a very fine used copy with four full, even margins. Cat. £25 (see Photo Plate XIII)	£12	1
586	— Ditto, good used; three good margins but close at left	£5	1
587	— 1/- indigo, a superb mint <b>BLOCK</b> , perfect margins. Cat. £32 (see Photo Plate XIII)	£24	4
588	1859 pin perf. 12½ 1d. rose-red and 6d. deep green, good used copies. Cat. £12	£5	2
589	— 1/- purple-slate, a very fine used copy; several perfs. have been clipped, still leaving a full-margined stamp. Cat. £40 (see Photo Plate XIII)	£26	1
590	— Pin perf. 13½-14 1d. rose-red, 1d. carmine-lake, 4d. dull purple, 6d. yellow-green and 6d. deep green (2); fine used but several with some perfs. clipped. Two of the 6d.'s have R.P.S. certificates. Cat. £24	£10	6
591	— 1d. rose-red, an extremely fine used pair, centred a trifle high and perfs. very slightly stained. With R.P.S. certificate. Cat. 85/-	65/-	2
592	— 1d. carmine-lake, unused with a great part original gum. Cat. £8	£4	1
593	— 4d. dull lilac, a superb mint pair. Cat. £12	£7	2
594	— Ditto, a brilliant mint <b>BLOCK</b> . Cat. £24 (see Photo Plate XIII)	£20	4
595	— 6d. yellow-green, a fine unused pair; small portion of gum missing from the back of right hand stamp. Cat. £16	£9	2
596	1860 clean cut perf. 14-16½ 1d. rose-red (2), 4d. brownish lilac (pair used on large piece, lifted for examination) and 6d. yellow-green (a little thinned), all fine used. Cat. 375/-	£9	5
597	— 1d. rose-red, a very fine unused pair with a greater part original gum. Cat. 190/-	£6	2
598	— Ditto, variety <b>IMPERF. BETWEEN</b> in a horizontal pair with sheet margin at right with large part original gum, small gum crease on right hand stamp. Cat. £20	£10	2
599	— 4d. brownish lilac, a superb mint marginal pair, centred to right. Cat. £12 (see Photo Plate XIII)	£9	2
600	— Ditto, a similar pair, not marginal, centred slightly to right	110/-	2
601	— 6d. yellow-green, superb mint. Cat. £8	£4	1
602	1861 rough perf. 14-16½ 1d. rose-red, 4d. lilac, 6d. yellow-green and 1/- indigo, good used copies. Cat. 475/-	£10	4
603	— 1/- indigo, very fine used. Cat. £15 (see Photo Plate XIII)	£10	1
604	1862 perf. 11½, 12 1d. (2), 4d. to 1/-, 1863 perf. 13 1d. and 1/- (cut along top), all good used, and 1863 perf. 13 1d. and perf. 12½ 1d., fine mint, the last with sheet margin attached. Cat. 515/-	£10	9
605	— 1d. crimson-lake and 4d. deep purple, fine mint copies, both a trifle off centre. Cat. 175/-	£4	2
606	1863 perf. 13 1d. lake (pair) and 1/- bright mauve (2), very fine used. Cat. £18	£9	4
607	— 6d. emerald-green, fine mint, corner perf. blunted. Cat. £20 (see Photo Plate XIII)	£10	1
608	— 1/- bright mauve, a fine <b>UNUSED</b> copy, well centred but several perfs. blunt. With R.P.S. certificate. Cat. £125 (see Photo Plate XIII)	£50	1

BRITISH WEST INDIES

Lot	Description	Valuation	Stamps
	Trinidad—continued	3.45 p.m.	
609	1863-75 wmk. CC perf. 12½ 1d. rose, 1d. scarlet (pair), 4d. bright violet, 4d. dull lilac, 6d. yellow-green, 6d. apple-green, 1/- bright deep mauve, 1/- lilac-rose (a little discoloured by the gum) and 1/- aniline-mauve, fine unused copies with mostly original gum. Cat. £40	£14	9
610	— 1d. (2), 4d. (2), 6d. (4) and 1/- (3) with shades; 1869 5/- (2); 1872 1/- (2); 1876 1d. (3), 4d. (2) and 1/-; 1879-82 surcharged ½d. wmk. CC sideways and wmk. CA ½d. and 1d.; 1882 4d. and 1882 manuscript provisionals 1d. in red on 6d. (three pairs); good to fine used, three items on pieces. Cat. £20+	£7	31
611	— 4d. bright violet, 4d. dull lilac, 1/- lilac-rose (part gum); 1869 5/-; 1872 4d. grey and 1/-; 1876 1d. lake, 6d. bright yellow-green, 6d. deep yellow-green and 1/-; 1879-82 CA 1d. and 1882 manuscript provisionals (two pairs, both shades, one stamp torn); unused or mint. Cat. £32	£14	15
612	— 4d. bright violet, 1/- lilac-rose and 1869 5/-, all mint, handstamped "TOO-LATE", the first in red	£5	3
613	1879-82 wmk. CC surcharged ½d. lilac (10, in two mint blocks) and ½d. mauve (block of six, used) and 1882 manuscript provisionals 1d. in red on 6d. bright yellow-green (a mint strip of ten and a single). Cat. 191/6	£5	21
614	— Wmk. CA 1d. rosy mauve bisected and used on piece with 1882 1d. and a similar bisect used on a slightly torn piece with two normals, this latter with R.P.S. certificate. Also 1882 1d. bisected and 1883-84 1d. bisected used on small pieces, the last with two normals and slightly defective	£5	9
615	1882 CA 4d. bluish grey, a superb mint BLOCK, the wmk. showing part marginal inscription. Cat. £16 (see Photo Plate XII)	£10	4
616	1883-84 CA ½d., 1d., 4d. and 6d. in pairs and 2½d. and 1/-; 1894 5/-; 1909 ½d. to 2½d. and Officials; 1894 overprinted "OS" ½d. to 5/- complete and three others; all mint. Also 1905-06 Postage Dues used to 8d. Cat. £15	£6	29
617	1894 wmk. CC 5/- marone, a superb mint block, two stamps with paper flaws. Cat. £4	50/-	4
618	Postal Stationery: Registered envelopes: 1884-95 2d. (8), various including two "SPECIMEN". Postcards: Internal (1882) used and external bearing current stamps; 1879 1½d.; 1884 ½d. (3, two used), 1d. (2, one used), 1½d. and reply and 2d. and reply; also 1902 K.E. ½d. and 1d. and 1913 K.G. V ½d. and 1d. (2, red and brown)	95/-	27

Virgin Islands

All stamps cancelled "A13" in black unless described to the contrary

619	1806 no wmk. perf. 12 on white wove paper 1d. green, 1d. deep green, 6d. rose and 6d. deep rose, fine unused with original gum, the first and last a trifle gum-stained. The two sixpennies are watermarked. Cat. £21	£10	4
620	— 1d. green, 1d. deep green and on toned paper 6d. rose-red, fine used, the last cancelled "A91". Cat. 155/-	£4	3
621	— 1d. deep green, 6d. rose and on toned paper 1d. green and 6d. rose-red, fine unused or mint, the last a corner copy. Cat. 245/-	110/-	4
622	— 1d. deep green, a superb mint corner block, very slightly gum-stained. Cat. £9	£7	4
623	— 6d. rose, a superb unused CORNER BLOCK with original gum with sheet margin at foot, one stamp partly severed. Cat. £84 (see Photo Plate VI)	£45	14

## VIRGIN ISLANDS

Lot	Description	Valuation Stamps	
	1866 No Wmk. Perf. 12—continued	3.50 p.m.	
624	— 6d. deep rose, a very prettily cancelled pair, centred a trifle high; a few perfs. blunt. With R.P.S. certificate. Cat. £20 (see Photo Plate XIV)	£12	2
625	— On toned paper 6d. rose-red, two fine unused copies with mostly original gum; small marginal stain on one, the other is watermarked	50/-	2
626	— Ditto, a complete unused SHEET with original gum, perfs. slightly severed; one stamp with small tear. One stamp shows the variety large "V" in "VIRGIN". Cat. £40 (see Photo Plate VI)	£30	25
627	— Perf. 15x12, a very fine unused copy of this rarity, slightly off centre. With R.P.S. certificate. Cat. £85 (see Photo Plate XII, also in colour)	£40	1

### 1867-68 No Wmk. Perf. 15

628	White wove paper 1d. blue-green, 1d. yellow-green; on toned paper 1d. yellow-green and wmk. CC perf. 14 1d. green and 1d. yellow-green; fine unused or mint. Cat. £13	110/-	5
629	— 1d. blue-green; on buff paper 4d. lake-brown; with coloured margins 1/- crimson on toned; single-lined frame 1/- rose-carmine on white (small corner crease); all fine used, cancelled "A91"; also 1888 4d. on 1/-, datestamp cancellation but creased across corner. Cat. £23	£8	5
630	— 1d. yellow-green, a complete mint SHEET, perforation out of register; three stamps creased, insignificant gum stains. Cat. £30	£20	12
631	— 6d. pale rose, very fine mint. Cat. £20 (see Photo Plate XIV)	£10	1
632	— Ditto, fine used. Cat. £20 (see Photo Plate XIV)	£10	1
633	— 1/- rose-carmine, an unused copy with a great part original gum. Cat. £15	150/-	1
634	Toned paper 6d. dull rose, unused with mostly original gum. Cat. £20 (see Photo Plate XIV)	£10	1
635	Pale rose paper 4d. lake-red, on buff 4d. lake-red, a pair, all mint with slight gum-staining; also an unused copy of the 4d. lake-brown on buff, stained on margins but with trace of original gum. Cat. 155/-	75/-	4
636	— 4d. lake-red, a superb mint SHEET, margins very slightly severed. Cat. £62 10/- (see Photo Plate XIV)	£50	25
637	— Ditto, a similar sheet but with no margins, one stamp partially severed	£40	25
638*	— Ditto, a single cancelled "A91" on COVER to London; very attractive item, slight marginal stains on stamp (see Photo Plate XII)	£12	1
639	With coloured margins on white and on toned 1/- crimson, both very fine unused with mostly original gum. Cat. 150/-	75/-	2
640	White paper 1/- crimson, a magnificent complete mint SHEET, margin partially severed at left. Cat. £75 (see Photo Plate XIV)	£70	20
641	— Ditto, as last, a superb used horizontal pair, very lightly and clearly cancelled. Cat. £8	£6	2
642	Toned paper 1/- crimson, a superb complete mint SHEET, perfs. severed or partially severed, forming blocks of ten, six and four. Cat. £75	£60	20

\*Cover

VIRGIN ISLANDS

Lot	Description	Valuation Stamps	
	1867-68—continued	3.56 p.m.	
643	— Blued paper 1/- crimson, a beautiful copy with light bluish "A91" cancellation and wide margin at top, a few perfs. blunt at right. With R.P.S. certificate (see Photo Plate XIV)	£25	1
644	— Ditto, as last, another very fine unused with wide margin at right. With R.P.S. certificate. Cat. £50 (see Photo Plate XII, also in colour)	£20	1
645	With single-lined frame on white 1/- rose-carmine, very fine unused with the greater part original gum; corner perf. missing. Cat. £10	£6	1
646	— Ditto, as last, a very similar copy, variety long-tailed "S"; two perfs. pulled at left	110/-	1
647	— Ditto, as last, a superb PAIR lightly cancelled "A91". Cat. £20 (see Photo Plate XIV)	£16	2
648	— Toned paper 1/- rose-carmine, very fine unused with the greater part original gum. Cat. £10	£6	1
649	— Ditto, as last, a fine unused copy with much original gum	90/-	1
650	— Ditto, as last, a very similar copy, variety long-tailed "S"	£8	1
651	— Ditto, as last, cancelled "A91" but centred a trifle to upper right. Cat. £10	110/-	1
—————			
652	1879 wmk. CC perf. 14 1d. green, a fine marginal horizontal pair with mostly original gum. Cat. 130/-	70/-	2
653	1880 wmk. CC 1d. emerald-green and 2½d. red-brown, superb mint horizontal pairs. Cat. 225/-	125/-	4
654	— 1d. emerald-green, a superb mint corner block (3×3) with plate number. Cat. 195/-	150/-	6
655	— 2½d. red-brown, a brilliant mint BLOCK. Cat. £16 (see Photo Plate VI)	£14	4
656	— Ditto, a single; also 1883-84 CA ½d. yellow-buff, ½d. dull bluish green (block of eight, 4×4, two stamps with blue pencil mark, one other defective) and 1d. pale rose; all fine used, the last cancelled "A13", the rest "A91". Cat. 198/-	90/-	11
657	— Ditto, as last, two very fine used copies cancelled "A91". Cat. £8	70/-	2
658	1883-84 wmk. CA ½d. yellow-buff and 1d. deep rose (thin spot); also 1887-89 CA 6d. dull violet, 6d. deep violet, 1/- sepia (thin spot) and 1/- brown; fine unused copies with mostly original gum. Cat. 195/-	£4	6
659	— ½d. yellow-buff (pair), ½d. yellow-green, 1d. pale rose (one stamp gum-creased) and 2½d. ultramarine in blocks of four and 1d. deep rose, block of eight (4×2) from corner of sheet with plate number, all superb mint. Cat. 390/-	£10	22
660	1887-89 wmk. CA 1d. red and 1d. rose-red, complete mint sheets of each shade. Cat. 288/-	£4	48
661	— 1d. rose-red, a strip of four on piece with a pair 1883-84 CA ½d. yellow-green, also another pair on piece, 1d. rose, 4d. (three shades), 6d. and 1/- sepia cancelled "A91", 6d. and 1/- brown with Tortola datestamp and 1/- sepia with "A13", all fine used. Cat. £21	£11	17
662	— 4d. chestnut, a BLOCK, slightly gum-stained, insignificant gum crease on one stamp; 4d. pale chestnut, superb marginal pair, and 4d. brown-red, a brilliant corner BLOCK; all mint. Cat. £17	£10	10
663	— 4d. brown-red, a magnificent complete mint SHEET, one stamp with slight gum disturbance. Cat. £12	£25	24
664	— 6d., three shades from dull to deep violet, 1/- sepia and 1/- brown, fine unused with mostly original gum, one stamp slightly gum-stained. Cat. 155/-	£3	5



VIRGIN ISLANDS

Lot	Description	Valuation Stamps	
1887-89 Wmk. CA—continued		4.3 p.m.	
665	— 1/- sepia, a brilliant mint SHEET. Cat. £48	£35	24
666	— 1/- brown, a superb pair, each stamp cancelled "A91". Cat. £6 (see Photo Plate XIV)	£6	2
667	1888 "4D" on 1/- black and crimson, a glorious complete mint SHEET, one stamp the long-tailed "S" variety. Cat. £90 (see Photo Plate XIV)	£75	20
668	— Ditto, a single superb copy cancelled "A91" in bluish black	50/-	1
669	— Ditto, a very similar copy cancelled with Tortola datestamp. Cat. 95/-	50/-	1
670	— Ditto, variety SURCHARGE DOUBLE, superb mint. With R.P.S. certificate. Cat. £70 (see Photo Plate XII, also in colour)	£50	1
671	1899 ½d. (thin) to 2½d., 1/- and 5/- and 4d., 6d. and 7d. in corner blocks of four, also ½d. errors "HALFPENNY" and "HALFPFNNY", fine mint. Cat. £20	170/-	19
672	— ½d. yellow-green, a superb mint corner block (3×3) showing both "HALFPENNY" errors. Cat. 130/-	75/-	9
673	— 1d. to 5/-, fine used; 1d., 4d., 6d. and 1/- with "A91" cancellation, the remainder Tortola datestamps. Cat. 142/-	75/-	7
674	— 4d. brown, variety "PENCF", mint. Cat. £35 (see Photo Plate XII, also in colour)	£20	1
675	— Ditto, the same variety superb used on small piece cancelled "A91". Cat. £35 (see Photo Plate XIV)	£20	1

THE END OF THE SALE

## The "Regent" Album

An elegant album at a popular price, bound in rich navy blue fabrikoid, and artistic gold tooling on the spine. Each volume contains fifty superfine white card leaves, size 10½×9½, double linen hinged, printed with soft grey quadrille squares, and protected with a glazed transparent interleaf which obviates all friction. The cover is fitted with a patent binder—a leaf can be inserted or removed without disturbing the rest of the album, which is protected by a fabrikoid covered slip-in case to match.

Price 63/-

Obtainable only from:

plus 1/6 postage

**Robson Lowe Ltd.**

50 PALL MALL

LONDON

S.W. 1

Abbey 4034

The

# "Rose-Hutchinson"

collections of

# INDIA

The late Lt.-Col. L. T. Rose-Hutchinson was a connoisseur of quality and rarity. Unfortunately failing sight and pressure of business affairs prevented his completion of mounting and arranging the vast accumulation of material that is offered. Since his death this section of his philatelic estate has been put in order by his friend and fellow student, Col. A. E. Stewart, of Ballarat, to whom we make due acknowledgment of much valuable assistance in lotting the Indian section.

This £8,000 study includes Scinde Dawk, 1854 Essays, Proofs, 2a., 1a., 2 as., 4 as., Reprints, etc. Later issues of Queen Victoria, King Edward VII, King George V, also Collections and Officials. The following groups are outstanding in quality, rarity and study: Convention States, Feudatory States; a remarkable and valuable section of India Used Abroad and relevant Literature.

The Reference Handbook Auction Catalogue is now ready, including hundreds of illustrations, many in colour. Price 1/-.

Subsequent to the sale, Bound Catalogues of the sale of this extraordinary collection will be available, with Prices Realised, at One Guinea.

Specialised Stamp Sales Nos. 863—864—865  
TUESDAY, OCTOBER 11th, at 11 a.m. and 2 p.m.  
WEDNESDAY, OCTOBER 12th, at 11 a.m.

and

# HONG KONG

This £4,000 sale represents a life-time study which the late owner found insufficient time to complete. Of world-wide appeal to students and collectors alike, this fascinating property includes outstanding items of rarity of the Colony, also Cancellations and Covers and Treaty Ports with relevant matter.

Illustrated Catalogues, 1/- each.

Specialised Stamp Sales Nos. 870—871  
WEDNESDAY, NOVEMBER 2nd, at 11 a.m. and 2 p.m.

For sale by order of the executors of the estate of the late  
Lt. Col. L. T. Rose-Hutchinson, F.R.P.S.L.  
of Bournemouth

**ROBSON LOWE LIMITED**  
50 PALL MALL, LONDON, S.W.1

Telephone: ABBay 4034

Cables: "Stamps, London"

Also at BOURNEMOUTH — PHILADELPHIA — MELBOURNE



Antigua 1862  
compound perf.

1884 CA 14

1876 CC 14  
All inverted "S" varieties

1884 CA 12

1876 CC 14

NEVIS: There is a mint corner pair of the 1866 1/- yellow-green, one with cross on hill, and a fine used 1/- on laid; there is also a used block of twelve of the 1d. The mint sheets include six different proofs, 1866 4d., 1876 1d. (8, two are retouched, also one imperf.), 4d. (2), 6d. and 1/-; 1878 1d. (perf. and imperf.). There is a superb 1890 1/- on cover.

ST. CHRISTOPHER: 1892 CA 14 4d. blue. Blocks of 1879 CC 14 4d. and 1888 1d. on 2½d. (8). Used copies of the ½d. on half 1d. double and 1d. on 2½d. inverted.

ST. LUCIA: 1863 "Six pence" on 4d., mint blocks of 1860 1d., 4d., and 1863 1d. provisional errors include ½d. on 3d. die II double and inverted (2).

ST. VINCENT: 1861 intermediate 1d. imperf. between strip of four; 1863 1d. compound perf. used, 1866 perf. 11-12½ 1/-, 1868 1/- brown, 1872 1/- lilac-red (2), 1875 1/- claret (corner pair), 1880 5/- (2), "1d" on half 6d. (two unused pairs and a used single), "½" on half 6d. (unused and used unsevered pairs, used fraction bar omitted), "4d" on 1/- (two used), 1886 CA 14 6d. violet (corner block), CA 12 ½d. orange, 6d. green (block).

TOBAGO: 1879 £1, 1882 4d. malformed "PENCE", 1886-89 "½ PENNY" on 6d. (pair, one inverted) and "½ PENNY" on 2½d. (pair, one omitted).

TRINIDAD: 1852-56 lithographs—a fine used array with five fine impressions, two being on cartridge; 1859 pin perf. 12½ 1/- purple-slate used, 1863 perf. 13 1/- bright mauve unused.

VIRGIN ISLANDS: 1866 6d. rose on white (block of 14) and 1d. compound perf. Complete unused sheets of the 1866 6d. on toned, 1867 1d., 4d. lake-red, coloured margins 1/- on white and on toned, 1887-89 4d. and 1/-, 1888 "4d" on 1/-, the errors including the 1888 provisional double and the 1899 4d. "PENCE" mint and used.



1876 6d., one inverted "S"

Antigua 1862 6d.

1876 6d. blue-green

The "BOUCHER" KEYNOTES are "QUALITY AND RARITY"



1872

1866 p. 11-12½

1886 CA 12

1868

1872



1880-81 provisionals

No "bar"



1880

1875

1880



1866 perf. 15x12

1868 on blue

1888 double

1889 "PENCE"

ROBSON LOWE, LTD., 50 Pall Mall, London, S.W.1.  
London, Bournemouth, Philadelphia and Melbourne.

LIST OF  
**PRICES REALISED**  
at the  
**SPECIALISED STAMP SALES**

Nos. 872-873  
held on  
Wednesday, November 9th, 1949

at the premises of  
**ROBSON LOWE LTD.,**  
50 PALL MALL,  
LONDON  
S.W.1.

SALES, WEDNESDAY, NOVEMBER 9th, 1949

## REALISATIONS

of the

Specialised Stamp Sales, Wednesday, November 9th, 1949

Lot	£	s.	d.	Lot	£	s.	d.	Lot	£	s.	d.	Lot	£	s.	d.
1	2	10	0	40	10	10	0	79	4	15	0	118	7	0	0
2	18	10	0	41	2	15	0	80	3	10	0	119	40	0	0
3	29	0	0	42	15	0	0	81	18	10	0	120	75	0	0
4	33	0	0	43	7	10	0	82	31	10	0	121	7	7	0
5	13	10	0	44	12	0	0	83	6	15	0	122	2	15	0
6	3	15	0	45	24	0	0	84	2	15	0	123	34	0	0
7	7	0	0	46	4	10	0	85	10	0	0	124	16	10	0
8	6	15	0	47	28	0	0	86	9	0	0	125	4	10	0
9	24	0	0	48	7	7	0	87	3	3	0	126	3	15	0
10	14	0	0	49	9	10	0	88	4	15	0	127	9	0	0
11	2	7	6	50	4	5	0	89	28	0	0	128	4	0	0
12	2	15	0	51	5	5	0	90	5	5	0	129	3	15	0
13	31	10	0	52	12	0	0	91	7	5	0	130	5	5	0
14	14	10	0	53	7	0	0	92	9	0	0	131	5	5	0
15	7	0	0	54	1	10	0	93	4	0	0	132	6	10	0
16	6	10	0	55	5	5	0	94	1	18	0	133	10	10	0
17	7	5	0	56	17	0	0	95	5	15	0	134	3	15	0
18	8	15	0	57	3	10	0	96	20	0	0	135	2	0	0
19	13	0	0	58	12	0	0	97	14	0	0	136	2	17	6
20	4	15	0	59	2	0	0	98	5	10	0	137	11	10	0
21	10	10	0	60	3	15	0	99	80	0	0	138	5	0	0
22	10	0	0	61	2	0	0	100	3	5	0	139	3	5	0
23	4	0	0	62	6	10	0	101	22	0	0	140	16	10	0
24	12	0	0	63	27	0	0	102	23	0	0	141	7	5	0
25	3	10	0	64	22	0	0	103	67	10	0	142	4	10	0
26	4	0	0	65	52	0	0	104	67	10	0	143	23	0	0
27	10	10	0	66	8	8	0	105	7	0	0	144	5	10	0
28	12	10	0	67	3	0	0	106	14	10	0	145	5	5	0
29	10	10	0	68	3	0	0	107	8	0	0	146	4	0	0
30	17	0	0	69	7	5	0	108	9	10	0	147	4	0	0
31	4	5	0	70	7	10	0	109	3	10	0	148	8	0	0
32	14	0	0	71	9	0	0	110	6	10	0	149	11	0	0
33	5	5	0	72	58	0	0	111	10	0	0	150	6	15	0
34	28	0	0	73	5	15	0	112	14	0	0	151	1	5	0
35	21	0	0	74	17	0	0	113	3	10	0	152	1	15	0
36	105	0	0	75	4	5	0	114	7	7	0	153	10	10	0
37	3	0	0	76	9	9	0	115	4	15	0	154	11	10	0
38	7	0	0	77	5	10	0	116	4	4	0	155	23	0	0
39	6	0	0	78	5	0	0	117	5	15	0	156	21	0	0

SALES, WEDNESDAY, NOVEMBER 9th, 1949

Lot	£	s.	d.	Lot	£	s.	d.	Lot	£	s.	d.	Lot	£	s.	d.
157	4	0	0	204	14	10	0	251	10	10	0	297	5	10	0
158	4	15	0	205	1	17	6	252	17	10	0	298	4	10	0
159	31	0	0	206	3	5	0	253	3	5	0	299	5	0	0
160	3	0	0	207	8	10	0	254	15	0	0	300	6	0	0
161	1	12	6	208	28	0	0	255	5	10	0	301	3	15	0
162	11	0	0	209	52	0	0	256	7	15	0	302	30	0	0
163	17	10	0	210	21	0	0	257	2	5	0	303	16	0	0
164	70	0	0	211	12	0	0	258	31	0	0	304	7	7	0
165	5	0	0	212	8	0	0	259	9	0	0	305	7	5	0
166	14	0	0	213	12	0	0	260	20	0	0	306	28	0	0
167	12	0	0	214	9	10	0	261	5	10	0	307	20	0	0
168	8	0	0	215	4	15	0	262	12	10	0	308	24	0	0
169	5	10	0	216	11	0	0	263	5	15	0	309	5	10	0
170	7	15	0	217	4	0	0	264	8	10	0	310	5	10	0
171	14	0	0	218	13	10	0	265	12	10	0	311	8	0	0
172	4	15	0	219	12	10	0	266	34	0	0	312	7	10	0
173	4	0	0	220	9	10	0	267	25	0	0	313	5	10	0
174	17	10	0	221	4	0	0	268	6	10	0	314	13	0	0
175	5	0	0	222	4	15	0	269	2	2	0	315	14	10	0
176	7	15	0	223	7	0	0	270	6	6	0	316	3	5	0
177	13	0	0	224	16	10	0	271	4	0	0	317	10	0	0
178	14	10	0	225	14	10	0	272	8	0	0	318	5	10	0
179	4	0	0	226	8	10	0	273	2	2	0	319	4	0	0
180	3	10	0	227	2	15	0	274	2	2	0	320	4	15	0
181	13	0	0	228	7	7	0	275	1	12	6	321	3	5	0
182	8	8	0	229	16	10	0	276	21	0	0	322	40	0	0
183	4	10	0	230	8	10	0	277	27	0	0	323	34	0	0
184	4	15	0	231	4	15	0	278	5	10	0	324	5	0	0
185	5	5	0	232	10	10	0	279	14	0	0	325	9	0	0
186	25	0	0	233	5	0	0	280	15	0	0	326	63	0	0
187	2	15	0	234	4	10	0	281	13	0	0	327	130	0	0
188	11	0	0	235	15	10	0	282	2	5	0	328	4	15	0
189	5	15	0	236	3	5	0	282a	2	15	0	329	4	10	0
190	11	0	0	237	6	0	0	283	7	0	0	330	4	5	0
191	14	10	0	238	5	0	0	284	6	15	0	331	4	0	0
192	4	0	0	239	5	15	0	285	16	0	0	332	6	15	0
193	11	0	0	240	4	0	0	286	9	0	0	333	16	0	0
194	4	5	0	241	4	0	0	287	23	0	0	334	5	5	0
195	5	0	0	242	6	6	0	288	24	0	0	335	7	0	0
196	7	10	0	243	21	0	0	289	7	10	0	336	5	5	0
197	18	10	0	244	9	0	0	290	7	5	0	337	20	0	0
198	15	0	0	245	14	0	0	291	38	0	0	338	6	5	0
199	4	10	0	246	3	10	0	292	24	0	0	339	4	0	0
200	17	10	0	247	4	5	0	293	57	10	0	340	80	0	0
201	18	10	0	248	5	10	0	294	18	0	0	341	54	0	0
202	5	5	0	249	30	0	0	295	11	0	0	342	75	0	0
203	11	0	0	250	5	10	0	296	40	0	0	343	7	7	0

## SALES, WEDNESDAY, NOVEMBER 9th, 1949

Lot	£	s.	d.	Lot	£	s.	d.	Lot	£	s.	d.	Lot	£	s.	d.
344	8	10	0	391	13	0	0	438	3	0	0	485	5	10	0
345	36	0	0	392	2	2	0	439	5	0	0	486	18	0	0
346	10	10	0	393	24	0	0	440	12	0	0	487	13	10	0
347	16	0	0	394	11	0	0	441	14	0	0	488	4	15	0
348	10	0	0	395	62	10	0	442	4	4	0	489	50	0	0
349	4	10	0	396	6	0	0	443	6	5	0	490	45	0	0
350	3	15	0	397	10	10	0	444	4	15	0	491	30	0	0
351	2	2	0	398	7	0	0	445	2	15	0	492	54	0	0
352	3	15	0	399	12	0	0	446	5	15	0	493	60	0	0
353	3	15	0	400	12	10	0	447	7	15	0	494	6	15	0
354	7	10	0	401	17	0	0	448	9	0	0	495	19	0	0
355	4	5	0	402	5	5	0	449	38	0	0	496	23	0	0
356	4	5	0	403	6	0	0	450	25	0	0	497	85	0	0
357	4	10	0	404	5	0	0	451	10	0	0	498	25	0	0
358	7	15	0	405	4	10	0	452	20	0	0	499	12	10	0
359	8	10	0	406	3	10	0	453	8	0	0	500	12	0	0
360	15	10	0	407	6	0	0	454	6	15	0	501	14	10	0
361	12	0	0	408	6	6	0	455	4	4	0	502	11	10	0
362	13	0	0	409	9	10	0	456	56	0	0	503	46	0	0
363	2	10	0	410	5	15	0	457	5	15	0	504	48	0	0
364	3	15	0	411	4	10	0	458	3	10	0	505	15	10	0
365	8	8	0	412	7	10	0	459	9	0	0	506	11	10	0
366	13	0	0	413	1	17	6	460	9	0	0	507	6	15	0
367	5	10	0	414	3	15	0	461	32	0	0	508	5	0	0
368	6	15	0	415	3	10	0	462	2	17	6	509	9	10	0
369	1	15	0	416	6	0	0	463	16	0	0	510	5	0	0
370	3	5	0	417	6	0	0	464	13	10	0	511	6	10	0
371	19	0	0	418	5	5	0	465	21	0	0	512	4	10	0
372	3	15	0	419	3	0	0	466	5	10	0	513	9	10	0
373	10	10	0	420	5	10	0	467	6	0	0	514	5	0	0
374	3	10	0	421	7	0	0	468	10	0	0	515	15	10	0
375	9	10	0	422	6	6	0	469	13	10	0	516	3	15	0
376	5	5	0	423	2	10	0	470	42	0	0	517	4	10	0
377	8	10	0	424	2	10	0	471	39	0	0	518	34	0	0
378	11	10	0	425	4	0	0	472	5	10	0	519	6	6	0
379	7	5	0	426	2	12	6	473	4	15	0	520	37	0	0
380	20	0	0	427	5	5	0	474	11	0	0	521	7	10	0
381	13	0	0	428	8	0	0	475	5	10	0	522	5	10	0
382	7	7	0	429	18	0	0	476	12	0	0	523	9	0	0
383	14	0	0	430	9	10	0	477	5	5	0	524	67	10	0
384	7	15	0	431	1	15	0	478	72	10	0	525	25	0	0
385	6	6	0	432	13	10	0	479	6	0	0	526	2	5	0
386	5	5	0	433	1	10	0	480	5	5	0	527	7	10	0
387	3	10	0	434	12	10	0	481	15	0	0	528	4	10	0
388	12	10	0	435	45	0	0	482	12	0	0	529	1	0	0
389	50	0	0	436	3	0	0	483	4	10	0	530	7	0	0
390	8	10	0	437	4	0	0	484	11	0	0	531	4	4	0



SALES, WEDNESDAY, NOVEMBER 9th, 1949

Lot	£	s.	d.	Lot	£	s.	d.	Lot	£	s.	d.	Lot	£	s.	d.
532	5	10	0	568	38	0	0	604	10	0	0	640	75	0	0
533	4	15	0	569	21	0	0	605	3	5	0	641	6	0	0
534	10	10	0	570	13	10	0	606	6	10	0	642	42	0	0
535	62	0	0	571	7	0	0	607	6	5	0	643	12	0	0
536	10	10	0	572	6	5	0	608	18	0	0	644	14	0	0
537	7	10	0	573	10	10	0	609	12	0	0	645	3	10	0
538	8	0	0	574	5	5	0	610	8	10	0	646	4	0	0
539	5	10	0	575	9	0	0	611	10	0	0	647	12	10	0
540	5	5	0	576	2	0	0	612	4	4	0	648	3	0	0
541	10	10	0	577	13	0	0	613	3	10	0	649	3	10	0
542	23	0	0	578	10	0	0	614	5	5	0	650	5	5	0
543	13	0	0	579	7	10	0	615	6	15	0	651	5	10	0
544	1	10	0	580	4	0	0	616	4	10	0	652	3	15	0
545	4	4	0	581	4	0	0	617	3	15	0	653	6	15	0
546	2	15	0	582	5	0	0	618	2	5	0	654	6	0	0
547	33	0	0	583	3	0	0	619	10	0	0	655	11	10	0
548	30	0	0	584	7	0	0	620	5	10	0	656	1	15	0
549	3	10	0	585	5	15	0	621	5	10	0	657	2	10	0
550	2	2	0	586	2	15	0	622	7	0	0	658	2	17	6
551	15	10	0	587	23	0	0	623	38	0	0	659	9	0	0
552	16	0	0	588	5	10	0	624	12	0	0	660	6	10	0
553	15	10	0	589	19	10	0	625	1	0	0	661	15	10	0
554	5	0	0	590	8	0	0	626	46	0	0	662	4	0	0
555	9	0	0	591	5	5	0	627	44	0	0	663	32	0	0
556	2	10	0	592	3	0	0	628	4	5	0	664	3	0	0
557	2	0	0	593	6	0	0	629	10	10	0	665	44	0	0
558	3	15	0	594	19	0	0	630	25	0	0	666	9	0	0
559	3	15	0	595	6	10	0	631	15	10	0	667	97	10	0
560	12	10	0	596	9	0	0	632	12	10	0	668	2	2	0
561	5	10	0	597	4	4	0	633	12	0	0	669	2	8	0
562	3	15	0	598	6	0	0	634	12	10	0	670	65	0	0
563	3	15	0	599	7	10	0	635	2	10	0	671	6	6	0
564	5	10	0	600	2	0	0	636	30	0	0	672	5	5	0
565	15	0	0	601	3	10	0	637	26	0	0	673	2	17	6
566	46	0	0	602	11	0	0	638	13	0	0	674	25	0	0
567	36	0	0	603	5	0	0	639	4	4	0	675	22	0	0

End of Sales.