

SALE NUMBERS 1554-55

THE FINE COLLECTIONS FORMED BY

The Late COLONEL F. F. DUFFUS

BRITISH  
WEST INDIES

PARTICULARLY ST. VINCENT

AND

NORTH AMERICA

WITH CANADIAN CLASSICS

---

WEDNESDAY, 6th FEBRUARY, 1957

at 11 a.m. and 2 p.m.

---

ROBSON LOWE LTD.

50 PALL MALL, LONDON, S.W. 1

Telephone: TRAfalgar 4034

Cables: "Stamps, London"

*Price One Shilling*

# Conditions of Sale

*Every Lot in our Auctions is offered subject to the "Philatelic Auctioneers' Standard Terms and Conditions of Sale," a copy of which may be obtained free on request from our Offices.*

A synopsis of these Conditions of Sale is printed below.

1. The purchaser to be the highest bidder. Any dispute arising will be determined by the Auctioneer who may immediately re-offer any disputed lot.
2. (a) The bidding and advances to be regulated at the Auctioneer's discretion.  
(b) Buyers to give their names and addresses; also, if required, to pay down the whole or part of the purchase price before or on delivery. Failure to comply with these rules may cause any deposit to be forfeited; uncleared lots after four days may be resold by public or private sale and any deficiency shall be made good by the defaulters.  
(c) Agents bidding on behalf of undisclosed clients do so on their own responsibility both for payment and safe delivery of the lots.
3. The Auctioneer reserves the right to bid on behalf of Clients and Vendors.
4. The buyer of any lot becomes responsible for it from the time it is "knocked down". By arrangement with the Auctioneer, purchasers in the room may take delivery of any material secured. Lots purchased on behalf of mail bidders will be forwarded by the most practical method, all charges incurred to be borne by the purchaser.
5. The Auctioneer shall not be liable for any default of the purchaser or vendor. The Auctioneer shall not be liable for any omissions or errors made by clients when sending their instructions to bid.
6. Each lot is sold as genuine and correctly described and the purchaser is at liberty to reject the lot within seven days of the date of the sale if the lot does not agree with the description. Should the purchaser wish to obtain expert opinion on any individual lot, reasonable extension of time will be granted by the Auctioneer if requested within seven days of the date of the sale. (Overseas buyers within seven days of receipt of the lot.) The onus of proving a lot to be not genuine or wrongly described lies with the purchaser; proof of the inability of the Expert Committee to express a definite opinion will not discharge such onus. No lot may be rejected if, subsequent to the sale, it has been immersed in water or treated by any other process, unless the Auctioneer's permission to subject the lot to such immersion or treatment has first been obtained. No claim shall lie in respect of any lot or part thereof except in accordance with the Philatelic Auctioneers' Standard Terms and Conditions of Sale.

*We reserve the right to refuse admission to our Auction Room.*

**Lots will be on view** at 50 Pall Mall from 10 a.m. to 5 p.m. on January 28th to February 1st, 4th and 5th and on the morning of the sale. **Lots of a suitable size can be sent through the post for inspection**, postage and insurance both ways to be borne by the client. New clients should send references or a cash deposit.

*As the demand for inspection is considerable applications should be sent as early as possible.*

\* \* \* \*

All purchases made by residents in the Dollar Area must be paid in Dollars at the controlled rate of exchange, or by Sterling Draft drawn on London.

\* \* \* \*

*Valuations are fair values that a Collector may expect to pay.  
The finer points of quality are often indicated by these valuations.*

DESCRIPTIONS BY JOHN FORREST AND MARCUS SAMUEL

## Extensions

Where extensions are requested on single items, the buyer should notify the auctioneer who will submit the lot to the R.P.S. or the B.P.A. Expert Committees (as preferred by the buyer). The auctioneer may require the lot to be paid for pending the receipt of the expert opinion, the cost of which is the liability of the buyer.

# Catalogue

WEDNESDAY, 6th February, 1957

First Session at 11 a.m. precisely

The use of symbols following the lot numbers are for the convenience of buyers and indicate:—

★ unused    ○ used    ⊙ "Cancelled"    ⊕ essay    ⊖ proof    ⊗ "Specimen"  
 ☒ cover    △ on piece    ⊞ block    ⊕ Air Mail

Catalogue values and numbers are those of Gibbons' 1957 edition. Where other catalogues are used they are mentioned by name.

## BRITISH WEST INDIES

Lot	Description	Valuation	Stamps
1	Ⓢ A selection of "Specimen" stamps with Barbados 1882-86 4d. and 6d. and 1897-98 ½d. to 2/6; Bermuda 1883-96 2d.; Dominica 1886-88 ½d., 2½d. and 4d.; Nevis 1890 1/-; St. Lucia 1891-98 2d. and 5/-; St. Vincent 1893 4d. and 1899 ½d. to 5/- (washed) and Tobago 1885-94 ½d., 1d. and 6d.; unused or mint overprinted	£7	50
2	ANTIGUA: A collection with G.B. used in Antigua 1d. (forged "A18") and 4d. ("A02"); 1862 no watermark 6d. blue-green unused (off centre) and used (small thin); 1863-67 to 6d. (4); 1872 to 6d. (3); 1876 to 6d.; 1879 2½d. and 4d.; 1882 to 4d. (2, one unused) and 1884-86 to 4d.; eight are unused, eight are cancelled "A18". Cat. £69	£20	44
3	Ⓟ — 1863-67 plate proof of the 6d. in blue-green, a marginal example	£3	1
4	★ — 1884-86 wmk. CA 6d. deep green and 1/- mauve, fine unused with much original gum. Cat. 135/-	50/-	2
5	Ⓟ — 1921-29 cut-down die proof of the 4d. struck in black, a little rubbed (see Photo Plate I)	£6	1
6	Ⓟ BAHAMAS: 1859 1d. and 1861 4d. plate proofs in black, each on thick card	£5	2
7	Ⓟ — Ditto, 1d., 4d. and 6d., similar proofs, each with areas of stain on face	£6	3
8	★ — Thin paper 1d. (2), 1863-80 perf. 12½ 1d. (15), 4d. (4), 6d. (5) and perf. 14 1d. and 1/-, unused or mint shades. Cat. about £60	£15	28
9	○ — 1861 rough perf. 1d., 4d. and 6d. (2, shades), good examples, the 4d. slightly stained and creased. Cat. £38	£8	4
10	○ — 1862 perf. 11½, 12 6d. lavender-gray, fine with "A05" cancellation, slightly off centre and a few perforations trimmed at foot. Cat. £15	£3	1
11	○ — Ditto, perf. 13 1d. lake, 1d. brown-lake, 4d. dull rose and 6d. lilac (2, shades), good to fine. Cat. 670/-	£8	5
12	○ — Ditto, as last, 6d. lilac, fine and lightly cancelled, a few perfs. shortened at foot. Cat. £12 (see Photo Plate I)	£4	1
13	○ — 1863-80 wmk. CC perf. 12½ 1d., 4d. (3), 6d. (9) and 1/-, perf. 14 4d. (2) and 1/- (2) and 1882 perf. 12 4d. and perf. 14 1d. and 4d., good to fine. Cat. over £45	£6	21
14	Ⓟ — Ditto, variety imperforate 6d. violet, fine unused with some gum and printed on watermarked paper (see Photo Plate I)	£8	1
15	★ — Ditto, perf. 14 4d. rose, fine unused with traces of original gum. Cat. £12 (see Photo Plate I)	£5	1
16	★ — 1882 wmk. CA perf. 12 1d. and 4d. and perf. 14 1/- unused or mint, the 4d. slightly stained. Cat. 197/-	50/-	3
17	— 1884-98 1d. (2), 2½d. (4, one used), 4d., 6d. and 1/- unused or mint, 5/- and 1£ lightly cancelled. Cat. £18	£8	11

CAN YOU ALWAYS SPOT THE LOTS YOU WANT?

If not, our Pin-Point system is at your service

## BRITISH WEST INDIES

Lot	Description	Valuation	Stamps
<b>BARBADOS</b>			
18	★ 1852-55 on blued ½d. deep green. 1d. blue and 1d. deep blue and 1856-57 1d. pale blue and 1d. deep blue (2), all but one good to large margins, unused or mint. Cat. £12	£5/9/-	6
19	○ — 1d. blue (two shades), close to large margins, cancelled "1" in numeral. Cat. 250/-	£5 4/1/-	2
20	△ — 2d. greyish slate, variety bisected vertically, used on small piece. With R.P.S. certificate. Cat. £55 (see Photo Plate I)	£20 33/1/-	1
21	○ — 4d. brownish red, clearly cancelled, with close to good margins. Cat. £14	£5 3/15/-	1
22	○ 1856-57 imperf. ½d. green, 1d. blue (2), 6d. pale rose-red, 6d. deep rose-red (touched) and 1/- black (2), the first creased, good to fine. Cat. £50	£8 7/1/-	7
23	1860 pin perf. ½d. (3) and 1d. (2), 1861 ½d. and 1d., 1861-70 ½d. (2), 1d. (2) and 6d. (5). 1870-72 1d. (2) and 1/- (2) and 1874 ½d. (3) and 1d. (2), all but the last five used, good to fine. Cat. £52	£6 12/1/-	27
24	★ 1861 clean cut ½d. and 1861-70 rough perf. ½d. green (4), 1d. (3), 4d. (3), 6d. (4) and 1/-, unused or mint shades. Cat. about £44	£10 2/10/-	16
25	○ 1861-74 issues with 1861-70 4d. (2) and 1873 3d. (2) with values to 1/- (2), all dated but one. Cat. 589/-	£5 4/1/-	16
26	★ 1861-70 rough perf. ½d. deep green (marginal pair), ½d. green (strip of three) and ½d. grass green (a block of six, 3×2), four creased and one with small thin. Cat. 283/-	£7 6/5/-	11
27	— ½d. blue-green, two unused shades, each with R.P.S. certificate, and a used example, one unused off centre. Cat. £20	£6 5/15/-	3
28	★ — ½d. green, variety imperforate, some original gum	50/- 2/5/-	1
29	★ — 1d. deep blue, variety imperforate, a marginal example showing part of the adjacent stamp at top	£5 9/9/-	1
30	★ — 4d. dull rose-red unused, 4d. dull brown-red and 4d. lake-rose, the last two fine with much original gum. Cat. 295/-	£5 6/1/-	3
31	★ — 4d. dull vermilion, variety imperforate, traces of original gum	£5 5/1/-	1
32	○ 1870-71 wmk. Star ½d. (2), 1d. (3), 4d., 6d. and 1/-, good to fine, two with date-stamps and showing four different numeral cancellations. Cat. 382/-	£5 5/10/-	8
33	★ 1871 wmk. Small Star 1d. blue, off centre to upper left, and 1/- black. Cat. 205/-	£3 3/10/-	2
34	○ 1871-73 ½d., 4d., 6d. and 1/-, good to fine dated examples. Cat. over 1875/-	£4 8/15/-	4
35	★ 1873 6d. orange-vermilion, variety imperforate	30/- 3/6	1
36	Ⓟ 1873 3d., 1874 1d. and 1875-78 4d., plate proofs in black	£7 3/15/-	3
37	★ — 3d. brown-purple, fine unused with much original gum, small gum crease. Cat. £9 (see Photo Plate I)	£6 6/7/-	1
38	Ⓟ — 5/-, plate proof in purple-rose (see Photo Plate I)	£10 9/10/-	1
39	★ — 5/- dull rose, variety unused with much original gum, small gum disturbance and tiny gum stain. Cat. £40 (see Photo Plate I)	£12 16/1/-	1
40	○ — Ditto, a lightly cancelled example but centred to left. Cat. £30 (see Photo Plate I)	£12 12/10/-	1
41	○ — Ditto, an off centre example with fairly light cancellation	£8 4/1/-	1
42	★ 1875-78 wmk. CC perf. 12½ ½d. green and 4d. deep red, no gum. Cat. 187/-	£3 2/2/-	2
43	○ — Ditto, ½d. green (2), 4d. deep red (2), 6d. bright yellow (3) and 1/- violet (3), six with datestamps. Cat. 383/-	£5 2/10/-	10
44	★ — Ditto, 6d. yellow, fine but no gum. Cat. £26 (see Photo Plate I)	£12 11/10/-	1
45	★ — Ditto, 1/- aniline-violet, fine with some original gum. Cat. £16 (see Photo Plate I)	£7 2/10/-	1
46	★ — Ditto, as last, a very similar example (see Photo Plate I)	£7 9/10/-	1
47	★ — Perf. 14 ½d. (2), 1d. (3), 3d. (3), 4d. (2), 6d. (2) and 1/- (5), unused or mint shades. Cat. £68	£18 25/1/-	17
48	○ — Ditto, ½d. (5), 1d. (13, three with unusual cancels), 3d. (3), 4d. (2), 6d. (3) and 1/- (2), good to fine. Cat. 313/-	£7 7/1/-	28
49	★ — Ditto, 6d bright aniline-yellow, fine with much original gum, a little off centre. Cat. £35 (see Photo Plate I)	£15 22/1/-	1
50	1882-86 values to 5/-, 1892 ½d. on 4d. (7, including a pair with R.M.S.P. Co. belt "Posted on High Seas" cancellation) and 1892-99 ½d. to 2/6, twenty unused or mint. Cat. 371/-	£7 9/1/-	30

BRITISH WEST INDIES

Lot	Description	Valuation	Stamps
	11.13 a.m.		
	<b>Barbados—continued</b>		
51	1897-98 ½d. (2), ¼d., 1d. (3, one on blued), 2½d. (2), 5d. to 2/6, unused or mint but seven values to 2½d. Cat. 244/-	£4 <del>2/6</del>	13
52	Ⓟ 1916-20 die proof of the design with face value tablet blank, struck in black on glazed, thinned at foot	£8 <del>9/1</del>	1
53	○ Cancellations: 1852-70 issues, all but one with the first numeral cancellation, including 1 (2), 2, 3 (2), 4 (2), 5, 6 (2), 7 to 10 (2) and 11 (on 1858 6d.), fair to fine strikes	£25 <del>27/1</del>	17
54	○ — 1861-78 issues with second numeral cancellations including 1 (4), 2, 3 (2), 4 (2), 5 (2), 6 (3), 7 (2), 8 (2) to 11, good to fine strikes	£10 <del>9/1</del>	22
55	○ — 1875-78 1d. blue with second type numeral 1. 2 (4), 3 (2), 4 (3), 5 (2), 6 (3), 7 (3), 8 (2), 9 (2), 10 (2) and 11 (2) and other boot-heel types on values to 6d. and some without numerals	£10 <del>4/1</del>	43
56	★ <b>BERMUDA:</b> 1865-73 1d. (5), 2d. (2), 3d. (3), 6d. (6) and 1/- (4), 1880 ½d. and 4d. and 1883-1901 to 1/-, unused or mint with some shades. Cat. 716/-	£10	35
57	○ — Ditto, perf. 14 1d. and 3d., perf. 14×12½ 3d. (2), 6d. and 1/-, 1880 ½d. and 4d. and 1886 3d., good to fine, four with bluish cancellation. Cat. 330/-	£4	9
58	○ — 1874 THREE PENCE with "P" and "R" different type on 1/- green, fine and fairly lightly cancelled. With R.P.S. certificate. Cat. £12 (see Photo Plate I)	£5	1
59	★ — Ditto, but with "P" same type as "R", fine with some original gum, faint gum stains. With R.P.S. certificate. Cat. £28 (see Photo Plate I)	£12	1
60	○ — Ditto, 3d. on 1/- without serifs, closed tear at top, and 1873-75 One Penny on 2d., on 3d. and on 1/-, good to fine, one with Ireland Island datestamp. Cat. £36	£10	4
61	★ — 1873-75 One Penny on 3d. yellow-buff and One Penny on 1/- green, unused or with traces of original gum. Cat. 245/-	£5	2
62	○ Cancellations: 1865-73 1d. (3), 6d. (3) and 1/- (2) with Ludington's type K1 bar cancel for numbers 1 to 3 (2), 6, 7 and 13, two stamps defective; also 1865-73 1/- with type PM4 of Hamilton, thin	£4	9
63	○ — Ditto, perf. 14 2d. blue with fine strike of Ludington's K1 type "10", a few perfs. blunted. Cat. Ludington £10 (see Photo Plate III)	£8	1
64	△ — Ditto, as last, 1/- green with good to fine strike of Ludington's K1 type "15". Cat. Ludington £25 (see Photo Plate III)	£20	1
65	○ — 1865-96 issues with Ludington's type K3 and K3a with numbers 1 (4), 2 (5), 3 (4), 4 (3) to 6 (3), 7 (2), 8 (4), 9 (2), 10 (2), 11 (2), 12 (3), 13 (2), 14 (3), 15 (3) and 16, type H2 (2) no numerals, type K2 (3) and various datestamps with some scarce or rare	£40	74
66	○ — 1865-73 perf. 14 1d. rose-red, horizontal pair with faint but clear Ludington type K3a for Jan. 13, 1886, number "16" for Devonshire North	£4	2
67	○ — 1883-96 1d. carmine with Ludington type K4a for "18", clear impression. Cat. £5	£5	1
68	Ⓟ <b>CAYMAN ISLANDS:</b> 1901 ½d. imperforate colour trial in mauve on watermarked CA paper (see Photo Plate I)	£10	1
69	★ — Ditto, as last, a similar trial but on multiple CA paper and in turquoise and brown, small corner crease (see Photo Plate I)	£10	1
70	Ⓟ — 1908 die proof in black on glazed card of the 10/- duty plate, dated "3 JAN 08"	£6	1
71	<b>DOMINICA:</b> 1874 perf. 12½ 1d., 6d. and 1/- (2); 1877-79 perf. 14 ½d., 1d. (2), 2½d. (2), 4d. (2), 6d. and 1/- (2); 1882 red "½" in pair and HALFPENNY on half 1d.; 1886 ½d. (2) and 2½d., ½d. on 6d. and 1d. on 1/- and 1887-88 ½d., 1d. and 4d.; good to fine, nine are unused or mint. Cat. £63	£16	36
72	★ — 1887-88 wmk. CA 1/- dull magenta, fine unused with some original gum. Cat. £10	£4	1
73	★ <b>FALKLAND ISLANDS:</b> 1868-77 small and large "franks", fine. Cat. £20	£4	2
74	★ — 1878-79 1d., 6d. and 1/-, 1884-94 1d. and 4d., 1891-1904 ½d. (2), 1d. (2), 2d., 2½d. (2), 6d. to 1/- and 1898 2/6, unused or mint. Cat. 507/-	£7	16
75	★ — Ditto, 4d. grey-black, fine unused with some original gum, two perfs. pulled. With R.P.S. certificate. Cat. £22 (see Photo Plate I)	£8	1
76	○ — Ditto, as last but straight edge at top, and 6d., dated but torn, 1891 1d., 1886 4d. and 1891-1904 1d. (2) and 2½d. (3, one the Prussian blue), good to fine	£6	9
77	Ⓢ — 1891-1904 2d., 6d., 9d. and 1898 2/6 and 5/- overprinted "SPECIMEN"	£5	5
78	★ — 1898 2/6 blue and 5/- red, unused with some original gum, the first with small thin spot. Cat. 170/-	50/-	2

BRITISH WEST INDIES

Lot	Description	11.20 a.m.	Valuation	Stamps
79	<b>GRENADA: 1861-99, a collection of Q.V. issues with 1861-62 1d. (5) and 6d. (4), 1863-80 1d. (12) and 6d. (7), 1873 ½d., 1875 1/- (3), 1881 ½d. (2), 2½d. (4) and 4d. (2), 1883 POSTAGE 1d. and De La Rue to 1/-, 1886 1d. on 1½d. and 1d. on 1/-, 1888 4d. on 2/-, 1889 ½d. on 2/- (2), 1890 1d. on 2/-, 1891 1d. on 8d. and 2½d. on 8d., 1895-99 to 1/- and postage dues (7), about thirty unused or mint. Cat. over £100</b>		£20	77
80	Ⓟ — 1861-62 plate proofs of the 1d. and 6d. in rose-red, each in a horizontal pair, close to large margins		£10	4
81	Ⓟ — 1875 plate proof in black of the "shortened" head		£3	1
82	Ⓞ — Ditto, 1/- deep mauve, a little off centre but with "SPEC" of Specimen. Scarce		£3	1
83	★☐ — 1875 wmk. Large Star 1d. green, a block of four with much original gum, centred to upper right. Cat. £12		£6	1
84	★ — 1881 wmk. Large Star 4d. blue, a horizontal pair with some original gum. Cat. 130/-		£3	2
85	Ⓞ — 1883 ½d., 1891 2½d. on 8d. (italic type), 1895-99 ½d. and 1892 1d. to 3d. with local overprint, and 1887 1d., 1895-99 ½d. to 1/- and 1898 2½d. with ordinary overprint, all overprinted "SPECIMEN"		£6	16
86	★ — 1908-11 perforated colour trial on multiple CA paper of the ½d. in chrome-yellow (see Photo Plate I)		£8	1
87	Ⓟ — 1921-23 die proof in black on glazed card of the 1½d. duty plate, marked "AFTER STRIKING" and dated in pencil "10/2/22"		£4	1
88	Ⓞ — Cancellations: 1861-81 issues with 1d. (2), 2½d., 4d. (2) and 6d. (2) with first type letter cancellation, the complete set from "A" to "G"		£12	7
89	Ⓞ — Ditto, the same type on De La Rue 1883 1d. (A, B and D) and one other, thin or thick type with serifs including A (4), B, C (2), D (4), E (2), F (2) and G and later datestamps including a few village marks, many are coloured; also two forgeries, £1 and £5		£15	41
90	≡ <b>JAMAICA: 1841-60 covers (6) showing Jamaica Paid (3), Jamaica Ship Letter and showing village datestamps of Gayle, Clarendon and Alexandria, poor to good</b>		£5.1	covers 6
91	Ⓞ — Great Britain Used Abroad: 1855-56 4d. (2) and 6d. (6) with "A01" (3), "A27", "A30" on cover, "A49" (some perfs. cut off) and "A70"; also a cover from Rio Bueno; some a little damaged		£6.7	8
92	Ⓞ — 1860-63 wmk. Pineapple, variety imperforate, 1d., 2d., 4d. and 6d., unused or with some original gum, overprinted "SPECIMEN"		£8	4
93	Ⓞ — 1860-97 issues with 1860-63 1d. (2), 3d., 6d. (2) and 1/- (4) and later Q.V. to 6d., eleven overprinted and six with manuscript "SPECIMEN", unused or mint		£15	18
94	★ — 1860-63 wmk. Pine, variety imperforate, 1d., 2d., 4d., 6d. and 1/-, unused or mint (see Photo Plate III)		£50	5
95	— Ditto, 1d. (3), 2d. (3) to 6d. (3) and 1/- (3) unused and 1d. (6), 2d. (2), 3d. (8), 4d., 6d. (5) and 1/- (10) used, mainly good to fine		£20	91
96	★ — Ditto, 1d. (3), 2d. (2), 3d., 4d. (2), 6d. (2) and 1/- (2), striking unused or mint shades. Cat. £84		£18	12
97	≡ — Ditto, 1d. blue, variety bisected, one used on front from Mandeville to Spanish Town (see Photo Plate IV)		£12	1
98	★☐ — Ditto, 3d. green, a mint block with wing margin at right. Cat. 230/-		£8	4
99	Ⓞ — Ditto, 1/- brown with dollar variety, fine but a trifle off centre. Cat. £23 (see Photo Plate I)		£9	1
100	★ — 1870-83 wmk. CC ½d. to 5/- unused or mint, mainly fresh. Cat. 408/-		£6	9
101	★ — Ditto, 4d. red-orange, fine with much original gum. Cat. £10		£3	1
102	Ⓞ — Ditto, 1/- dull brown, fine with dollar variety, centred to upper left. Cat. £12		£5	1
103	★ — 1883-97 ½d. (2), 1d. blue, 1d. rose (2), 2d. rose, 2d. grey (2), 3d. (2), 4d., 6d. (4), 1/- (2), 2/- and 5/- with shades, unused or mint. Cat. 422/-		£6	20
104	Ⓞ — Ditto, 1/- brown, fine with datestamp and showing dollar variety, a little off centre. Cat. £15 (see Photo Plate I)		£6	1
105	★ — 1890 TWO PENCE HALF-PENNY on 4d. red-brown, reconstructed singles of the first and second settings, unused or mint		£10	22
106	Ⓞ — Ditto, a horizontal strip of six on small piece (top line of setting II), some perfs. stained, and a single, one the "PFNNY" variety		£4	7

BRITISH WEST INDIES

Lot	Description	Valuation	Stamps
	Jamaica—continued	11.27 a.m.	
107	○ — The collection of obliterating numbers in a red "Peckitt" album on Q.V. issues including some Pines and Tablet types with A01 (10), A27 (16), 28 (15), 29 (15), 30 (11), 31 (12), 32 (12), 33 (14), 34 (12), 35 (15), 36 (12, including five with "36" in manuscript), 37 (7), 38 (14), 39 (14), 40 (11), 41 (5), 42 (10), 43 (11), 44 (10), 45 (18), 46 (24, two used in K.G. V period), 47 (10), 48 (6), 49 (18), 50 (10), 51 (17), 52 (19), 53 (16), 54 (8), 55 (15), 56 (17), 57 (11), 58 (4), 59 (13), 60 (6), 61 (6), 62 (37), 63 (6), 64 (13), 65 (12), 66 (21), 67 (19, one in manuscript), 68 (34), 69 (6), 70 (11), 71 (11), 72 (8), 73 (21), 74 (15), 75 (17, one a c.d.s.), 76 (18), 77 (7), 78 (14), 79 (14), 80 (6), 81 (5), 82 (9) and 83 (15, also three on two covers), E06 (7), E30 (9), E58 (4), F80 (4), F81 (5), F95 (17), F96 (10), F97 (4), F98 (10), G13 (3), G14 (5), G15 (3), G16 (4), 193, (6), 196 (5), 199 (6), 201 (5), 598 (5), 615 (5), 617 (6), 622 (7), 631 (5), 640 (12), 642 (5) and 647 on 2d. (5), "A" (5), "B" (16), "C" (3), "D" (the very rare obliteration) and "E" (7); poor to fine impressions with several multiples (see Photo Plate V for a selection)	760 £165	975
108	○ — A collection of village and town datestamps in a red "Peckitt" album arranged alphabetically, mainly on Q.V. stamps, with some pairs and strips, values to 1/-	£12	197
109	★ <b>LEEWARD ISLANDS:</b> 1890 ½d. to 5/- with pair of 7d., 1897 Jubilee to 1/- and 1902 1d. surcharges (3), unused or mint. Cat. 263/-	90/-	19
110	○ — Ditto, ½d. to 7d., also 1/- and 5/- (2) discoloured, 1897 Jubilee to 5/- (slightly discoloured) and 1902 1d. surcharges (4), good to fine	£11	21
111	★ — 1897 Jubilee 5/- green and blue, fine unused with full original gum, a trifle discoloured. Cat. £30 (see Photo Plate I)	£14	1
112	○ — <b>Cancellations:</b> A collection of Queen Victoria issues used in Antigua (including St. John's, All Saints, St. Peter's), Dominica (including Portsmouth and Wesley), Montserrat, Nevis, St. Kitts (with 1890 ½d. to 5/- set used on cover), Virgin Islands (with Tortola and Road Town) with, in all, six covers	£25	148
113	△ <b>MONTSEERRAT:</b> 1876-84 bisects with 1d. red (3, one with two whole stamps) and 6d. green (stained) used on four pieces, 1876 6d., 1880 4d., 1884-85 2½d. brown and 4d. blue (cancellation appears bad) and 1884 perf. 12 1d. Cat. about £100	£20	13
114	★ — 1876 1d. red (3, shades) and 6d., 1880 2½d. and 4d. (both with small thin) and 1884-85 1d., 2½d. red-brown, 2½d. blue and 4d. mauve, unused or mint shades. Cat. 530/-	£8	11
115	★ — Ditto, 6d. green, variety with inverted "S", fine unused with some original gum. Cat. £45 (see Photo Plate I)	£20	1
116	★ — Ditto, 6d. blue-green, fine unused with much original gum. Cat. £22 (see Photo Plate I)	£11	1
117	★ — 1884-85 wmk. CA 4d. blue, fine unused with much original gum. Cat. £45 (see Photo Plate I)	£15	1
118	<b>NEVIS:</b> 1861 on greyish 1d. (2), 4d., 6d. (2) and 1/-, 1866 engraved to 1/- (heavily cancelled) and 1876 lithographed 1d. (5), 4d. and 1/- (2), fourteen unused, some with small defects). Cat. £58	£10	21
119	○ — 1876 lithographed 6d. grey with clear, central, rather heavy "A09" obliteration, centred slightly to foot. Cat. £12	£4	1
120	— 1879-80 wmk. CC 1d. and 2½d., 1882 1d. to 4d. and 1883-90 ½d. to 1/-, unused or mint but three. Cat. 338/-	£5	11
121	○ — 1883 ½d. on half 1d. lilac-mauve, two examples used on small pieces, one surcharged in violet, the other in black. Cat. 150/-	50/-	2
122	★ — 1883-90 wmk. CA 6d. green, fine unused with some original gum, heavily mounted. Cat. £10	£4	1
123	<b>ST. CHRISTOPHER:</b> 1870-76 1d. (5) and 6d. (3), 1879 2½d. unused and 4d. used, 1882-90 to 1/- unused including 2½d. brown used, 1885 ½d. on half of 1d. and 4d. on 6d. and 1886 1d. on 6d. (2) and 4d. on 6d., sixteen unused or mint. Cat. 893/-	£10	31
124	○ — Antigua used in St. Christopher: 1884-86 1d. alone and 1d. and St. Christopher 4d. used on piece, each item cancelled "A12"	£3	3

ARE YOU TOO BUSY

TO READ THROUGH THE CATALOGUE?

If so, use our Busy Buyers' Service

BRITISH WEST INDIES

Lot	Description	Valuation	Stamps
125	★ <b>ST. LUCIA:</b> 1860 1d. and 6d., 1863 1d. (2, shades), 4d. (2, shades) and 6d. and Half penny on 6d., good to fine unused or with some original gum. Cat. £63	£11	8
126	○ — Ditto. 1d. and 1863 1d. (small thin), 4d. and 6d., good to fine examples. Cat. 570/-	£7	4
127	★ — Ditto. 4d. blue, fine unused with much original gum, a little off centre. Cat. £18 (see Photo Plate I)	£5	1
128	○ — 1864 perf. 12½ 1d. (2), 4d. (2), 6d. (3) and 1/- (3), perf. 14 1d. (2), 4d., 6d. (2) and 1/-, 1881 ¾d., 1882-84 ¼d. to 1/-, perf. 12 4d. and Postal Fiscal 4d., good to fine, most fairly lightly cancelled. Cat. about £75	£11	25
129	★ — Ditto. 1d. (2) and 6d. (2) and perf. 14 1d., 4d., 6d. and 1/- and 1881 2½d. pair, good to fine unused or with some original gum. Cat. 955/-	£8	10
130	★ — Ditto, 4d. yellow, small corner thin, and 1/- orange, the last with some original gum. Cat. £24	£7	2
131	★ — 1881 ¼d. and 2½d. and 1882-84 ¼d., 1d., 4d. and 6d., unused or part mint. Cat. 370/-	£6	6
132	★ — 1882-84 perf. 14 1/- orange, fine with much original gum, centred to upper left. Cat. £16 (see Photo Plate I)	130/-	1
133	★ — Ditto, as last, a very similar example but centred to upper right (see Photo Plate I)	130/-	1
134	★ — Ditto, perf. 12 4d. yellow, fine unused with some original gum. Cat. £15 (see Photo Plate I)	£8	1
135	— A collection of the various re-entries and plate varieties to be found on the first types, values to 1/- (3), some unused or mint, poor to fine	£20	28
136	★ — 1882-86 ¼d. to 1/- (unused) with some or much original gum, the 6d. slightly stained at top. Cat. 619/-	£8	6
137	○ — Ditto, ¼d. to 1/- (fine), good to fine, the 6d. with slight horizontal crease. Cat. 554/-	£8	6
138	★ — 1886-87 1d. (stain) to 1/- and 1891-98 ¼d. to 10/- unused or mint. Cat. 339/-	£5	14
139	○ — Ditto, 3d. and 6d. and 1891-98 ¼d. to 2½d., 4d. to 10/-, mainly fine. Cat. 242/-	£4	11
140	— 1891-92 ¼d. on half 6d. used on small piece and 1d. on 4d. unused and die II ¼d. on 3d. unused horizontal pair, one stamp the narrow "O" variety and one used (normal). Cat. £19	£6	5

ST. VINCENT

141	★ The unused or mint collection with 1862 1d., 1863-66 1d. (2), 1872-73 1d. (2), 1885 1d. on 2½d. on 1d., 1886-89 to 5/- (2), 1890-91 to 1/- and later Queens to 5d. with some shades and duplicates	£15	64
142	○ The collection including 1861 6d., 1862 1d. and 6d., 1866 1/-, 1875 1/-, 1877 1/- and later Perkins Bacons to 6d., 1882-84 to 4d. (3), 1885 to 4d. (2), 1886-89 to 5/- and later Q.V. to 1/- (3), good to fine. Cat. £122	£14	100
143	○ The selection with 1861 6d., 1862 6d. (2), 1863-66 1d. (2) and 6d., 1866-75 1/- (4) and later with 1881 4d., 1885 4d. and later to 1/- (5), some shades and duplication, good to fine. Cat. £100	£12	38
144	○ A further selection from 1861 with 1861-66 to 6d. (3), 1868 4d. and 1/-, 1868 1/- and later Perkins Bacon to 1/- (2), good to fine. Cat. £108	£15	26
145	★ An unused or mint selection including 1862 1d. (2), 1863-66 1d. (3) and later with 1886-89 6d. and 5/- (2), 1890-91 to 1/- and later to 5d., some duplication. Cat. 778/-	£8	38
146	★ 1862 rough perf. 14 to 16 1d. rose-red (horizontal pair) and 6d. deep green (horizontal marginal strip of three), unused with some original gum. Cat. 310/-	£6	5
147	★ 1863-66 variety imperforate 1d. rose-red (pair) and 6d. deep green (a single), much original gum, the last a little creased	£9	3
148	★ 1866 perf. 11 to 12½ 4d. deep blue and perf. 11 to 12½ × 14 to 16 1/- slate-grey, the last with a trace of original gum. Cat. £38	£10	2
149	★ 1868 perf. 11 to 12½ 4d. yellow, fine and fairly well centred. Cat. £15	£4	1
150	○ — 1/- brown, quite a fine example, rather smudgily cancelled. Cat. £12	£4	1
151	○ 1873-74 perf. 11 to 12½ × 15 1/- lilac-rose, a fine colour with heavy cancel at left. Cat. £20	£4	1
152	☒ — Ditto, used on 1874 cover to Croydon, adhesive rather heavily cancelled	£14	1
153	★ 1880 1d. on half 6d. blue-green, fine with some original gum but climatically stained. Cat. £32 (see Photo Plate I)	£11	1



## ST. VINCENT

Lot	Description	Valuation	Stamps
		11.40 a.m.	
154 ★	1881 ½d. on half 6d. bright green, an unsevered pair with some original gum, slight fox marks. Cat. £25	£7	2
155 ★	— ONE PENNY on 6d. bright green, fine unused with some original gum, centred to upper left. Cat. £26 (see Photo Plate I)	£11	1
156 ○	1886-89 perf. 12 4d. dull blue, fine but stained at top, and 6d. bright green, heavily cancelled. Cat. £27	£5	2
157 ★	— Ditto, 6d. bright green, fine unused with some original gum. Cat. £12	£3	1
158 ★	1899 ½d. to 5/- unused or mint. Cat. 153/-	50/-	9

## CANCELLATIONS

159 ○	Great Britain used in St. Vincent: 1855-56 4d. and 6d. cancelled "A10", the first fair, the last fine but the adhesive is rather faded. Cat. £19	£5	2
160 ○	A selection including various cancelled "A10" (10) with values to 6d., one in red, "PD", Parcel Post, Trinidad (3) with other cancellations beneath and others	£8	21
161 ○	Various with "L" and "CO" in red on 1d. blacks, "BEQ" in black on 1d. red and extended Barrouallie and Georgetown extended datestamps on 1d. reds, the first stamp with thin	£6	5
162 ○	Various with "CA", "ST" and "GB/40c" (stamp poor) on 1d. blacks, also three "K" in black on 1d. drabs or red	£5	6
163 ○	"G.B. 40c" strikes in red on 1d. black (double strike) and in black on ½d. yellow, 1d. black, 1d. red, 6d. and 1/- vermilion, fair to fine strikes	£3	6
164 ○	Barrouallie: 1880 1d. drab with a good red (overstamped by "A10") and a fine black "BAR" cancellation	£6	2
165 ○	Bequia: 1886-89 ½d. (pair and a single), 1d. (3), 2½d. on 1d. (2) and 1907 1d. with fine "BEQ" cancellations	£9	9
166 ○	Biabou: 1877 6d. pale yellow-green with fine "BI" cancellation (see Photo Plate I)	£8	1
167 ○	Buccament: 1871 1d. and 1881 1d. with "BU" datestamps in red, the last over-stamped by G.B. 40c, slightly damaged at top; also "BI" on 1880 1d. struck in red	£5	3
168 ○	Calliaqua: 1868-81 issues with 1d. black, 4d. yellow and 6d. green (2) struck "CA" in red and 1d. (3) and 1/- struck "CA" in black, good to fine	£8	8
169 ○	— 1875 1/- claret, slightly off centre but with clear "CA" datestamp in red (see Photo Plate I)	£8	1
170 ○	Chateaubelair: 1871 1d. black in red and 1885 ½d. in black, both cancelled "CH"	£4	2
171 △	— 1882 front from Trinidad to Chateaubelair franked by three 1d. on 6d. and showing arrival "CH" c.d.s. in red	£10	3
172 ○	Colonarie: 1871-74 1d. (3) and 1882-84 1d. (2) with fair to fine "CO" datestamps in red	£10	5
173 ○	— 1877 6d. yellow-green with fine "CO" c.d.s. in red (see Photo Plate I)	£8	1
174 ○	Cumberland: 1882-84 1d. drab with "CUM" cancellation in red, small stain at foot (see Photo Plate I)	£7	1
175 ○	Kingston: 1871 1d. with "K" in red (2) and in black on ½d. yellow, 1d. red and 1d. drab, good to fine	£3	5
176 ○	Layout: 1871 1d. black with "L" cancellation in red	£3	1
177 ○	— 1881 ½d. and 1d. and 1882-84 1d. with "L" cancellations in red, some perfs. clipped	£10	3
178 ○	Mesopotamia: 1868 4d. yellow, two examples with a messy and a fine strike "MES"	£9	2
179 ○	Rabacca: 1871 1d. (2) and 6d. and 1875 1/- (damaged) with "RAB" cancellations in red	£8	4
180 ○	Stubbs: 1871 1d. black (2, one over-stamped by "A10") and 1880 1d. with good "ST" cancellations in red, one stamp thinned	£6	3
181 ○	— 1880 1d. olive-green with brilliant "ST" cancellation in red (see Photo Plate I)	£10	1

IF YOU HAVE LOTS FOR INSPECTION

*please return them promptly; others may  
be wanting to see them as well as you*

BRITISH WEST INDIES

Lot	Description	Valuation	Stamps
	St. Vincent—continued	11.45 a.m.	
182	○ Extended Village Cancellations: A collection on Queen Victoria, all but two line-engraved, with Barrouallie (3), Calliaqua (4), Canouan, Chateaubelair (3), Colonarie, Cumberland, Georgetown (5), Layou (2), Mayreau, Mesopotamia (3), Rabacca (4), Stubbs (3) and Union (5), good to fine	£15	36
183	○ — A selection with Georgetown, Chateaubelair, Calliaqua, Rabacca and Union on Q.V. and others including Questelles on K.G. V	£5	13
184	○ — 1886-89 ½d. and 1d. with a half and a full strike respectively of the rare Peruvian Vale cancellation (see Photo Plate I for the 1d.)	£20	2
185	○ — A selection of later line-engraved with posthumous cancellations of Mesopotamia, Mayreau, Bequia, Canouan and Union Island, mostly struck at the foot of the stamp	£15	41
186	TOBAGO: 1879 1d. (2), 3d., 6d. and 1/-, 1880 ½d. to 1/- less 6d., 1883 2½d. on 6d., 1882-84 ½d. to 2½d. (3) and 4d., 1885-94 to 1/- including 4d. with variety, 1886-92 ½d. (4), 1d. and 2½d. provisionals, twenty-four unused or mint. Cat. 935/-	£11	32
187	★ TRINIDAD: 1851-57 1d. (4) and 1859 4d. and 1/-, clear to large margins and some to much original gum. Cat. 365/-	£6	6
188	○ — 1851-57 1d. (six shades) and 1859 6d. green, apparently imperf., good to fine	£9	9
189	○ — 1852-60 1d., a selection of "primitives" with fine to poor impressions including three early, three intermediate and nine late or very late including two reds unused, poor to fine	£35	15
190	△ — 1860 1d. grey-blue used on small piece, close to large margins. Cat. £28	£8	1
191	△ — 1859 imperf. 1/- indigo fine used on small piece. Cat. £12	£3	1
192	○ — 1859 pin perf. 1d. (3), 6d. (2) and 1/-, 1860 1d. and 4d., 1861 to 6d. (2), 1862-63 to 6d., 1863-75 to 1/- (7), 1869 5/-, 1872-76 to 1/- (2), 1879-84 to 5/-, 1896-1900 to 5/- and later with 1901 5/-, about twenty unused or mint, poor to fine. Cat. over £200	£27	106
193	○ — 1859 pin perf. 12½ 6d. yellow-green, fine with perforations on all four sides, clear "1" cancel. Cat. £10	£5	1
194	★ — 1860 clean cut perf. 6d. yellow-green, fine unused with much original gum, centred to top. Cat. £8	£3	1
195	★ — 1861 rough perf. 4d. brownish lilac, fine unused with much original gum. Cat. £14	£4	1
196	○ — Ditto, 1/- indigo and 1/- bluish purple, fine examples, one centred to right. Cat. £24 (see Photo Plate I)	£10	2
197	○ — 1882 1d. in red on 6d., a marginal mint block (7×2) and a single and an example used on cover. Cat. £8	£4	16
198	○ — Cancellations: A collection of numerals including numbers in square to 24, numbers in diamonds to 28, duplex types with "T" to "35" including "T27" and twelve "Too Lates" and "Registered", mainly on Britannia types	£40	78
199	○ — Ditto, a collection of village datestamps, mainly on Q.V. and late Britannia issues and only slight duplication, values to 1/-	£25	82
200	TURKS ISLANDS: 1867 1d. to 1/- (2), 1873-79 1d. (2), 1881 provisionals with ½d. on 1d. (2), ½d. on 6d., ½d. on 1/- (3) and 4d. on 6d., 1881 1d. to 1/- and later Q.V. to 1/- (2), unused or mint but three. Cat. £64	£16	38
201	VIRGIN ISLANDS: 1866 1d. (2) and 6d. (2, one with large "V"), 1867-68 1d. (2), 4d. (2) and 1/- (3), 1879 1d., 1880 1d. and 2½d., 1883-84 ½d. (both), 1d. (2) and 2½d. (2), 1887-89 1d. (4), 4d. (2), 6d. (2) and 1/- (2) and 1888 4d. on 1/- unused or mint, and five values to 1/- used, mainly fine. Cat. about £100	£20	36
202	○ — 1898 ½d. to 5/- unused and ½d. (5) to 5/- used. Cat. 291/-	130/-	20

THE END OF THE FIRST SESSION

# SEYCHELLES

THE STANDARD WORK. BY H. V. FARMER  
 HISTORY, POSTAL HISTORY, MAURITIUS USED IN SEYCHELLES, ESSAYS, PROOFS,  
 SURCHARGE SETTINGS, MODERN PLATING, FULLY DESCRIBED. 132 PAGES, 3 MAPS,  
 129 ILLUSTRATIONS—CLOTH. PRICE TWENTY-FIVE SHILLINGS—POSTAGE 1/6

PLATE I



5	12	14	15	20	37
44	45	46	49	58	59
68	69	75	86	99	104
111	115	116	117	127	132
133	134	153	155	166	169
173	174	181	184		196

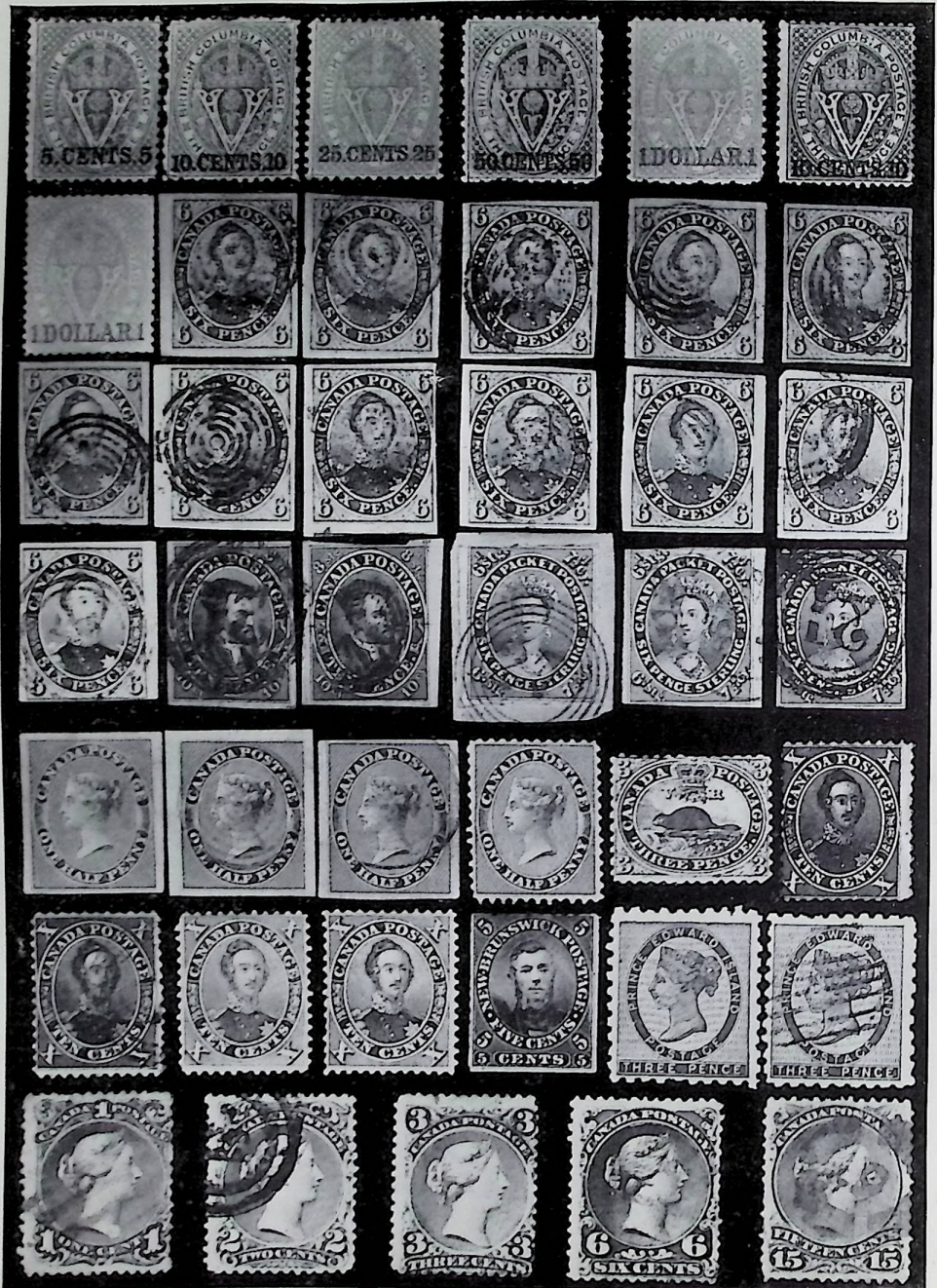


39

38

40

PLATE II



211	207	231	208	209	210
240		244		234	236
251		255		247	250
262		263		260	261
283		284		266	281
293	296	286	297	373	374
			322	298	299

PLATE III



63

64



219

221

220



94



215



226



228

242

249

253

254



229

239

241

252

267



257

270

271

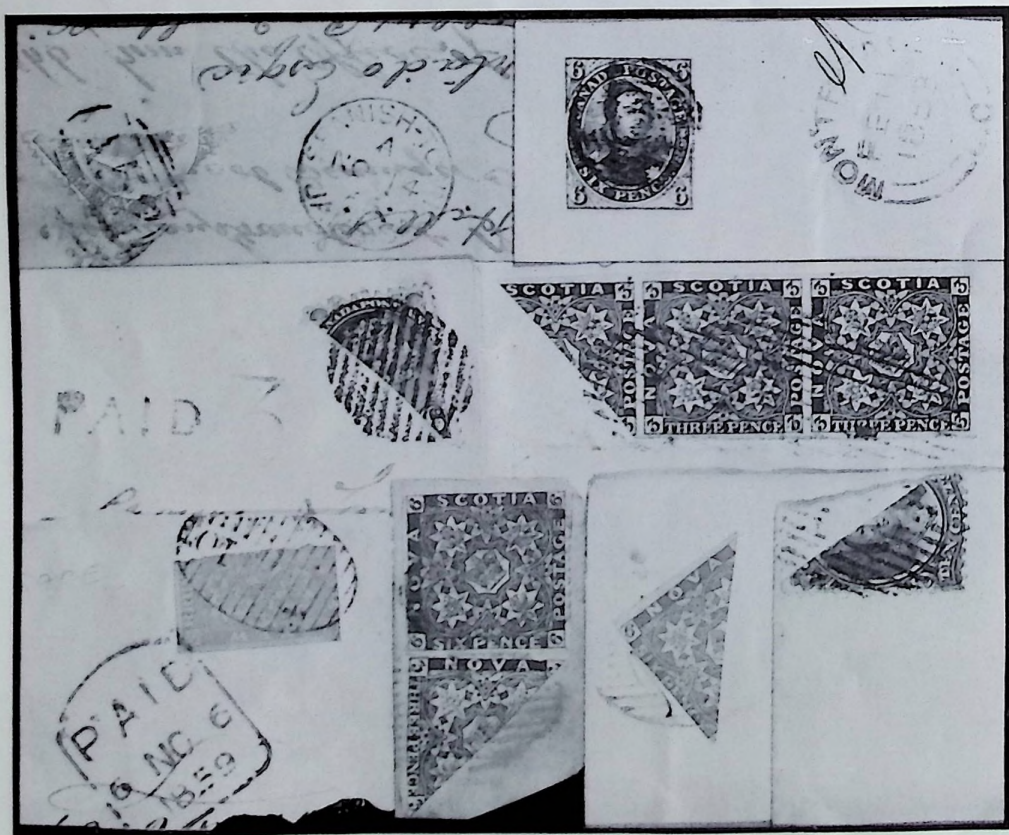
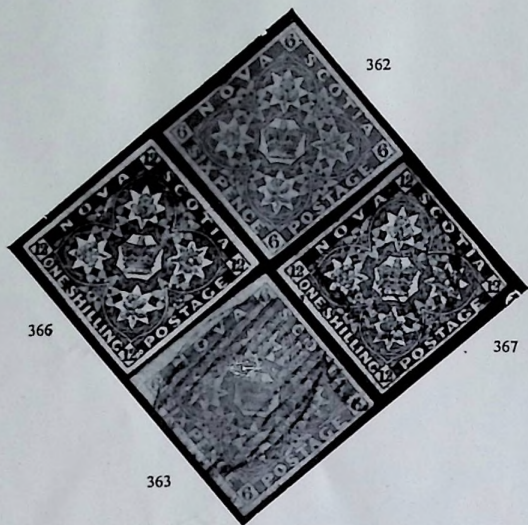
282



278

279

PLATE IV



97  
304  
318

361

364

237  
360  
371

THE "COLONEL F. F. DUFFUS" COLLECTION

Second Session at 2 p.m. precisely  
**BRITISH NORTH AMERICA**  
**BRITISH COLUMBIA**

Lot	Description	Valuation	Stamps
203 ★	1860 perf. 14 2½d. deep and pale reddish rose, fine copies but one faintly creased and with a tiny natural paper flaw and the other with straight edge at right; also 1865 CC 14 10c. blue, mint but with straight edge at right. Cat. £26	£8	3
204 ○	1865 CC imperf. 10c. blue, a lightly cancelled copy with good margins three sides, frame line touched at top and cracked in centre by horizontal crease. Cat. £45	£5	1
205 ○	1865 CC 14 5c. rose (2) and 10c. blue (2); also 1868-71 CC 12½ 5c., 10c., 25c., 50c. and \$1 (repaired at foot) and CC 14 2c., 5c. and 25c.; fair to fine, some with small defects. Cat. £72	£10	12
206 ★	1865-67 CC 14 3d. deep blue and 3d. pale blue; also 1868-71 CC 14 2c. brown, 5c. red, 25c. yellow and 50c. mauve; all mint but heavily mounted. Cat. 508/-	£9	6
207 ★	1868-71 CC 12½ 5c. red and 10c. lake, mint but heavily mounted, the first with a few perfs. rust stained. Cat. £31 (see Photo Plate II)	£12	2
208 ★	— 25c. yellow and 50c. mauve in similar condition. Cat. £22 (see Photo Plate II)	£10	2
209 ★	— \$1 green in similar condition but slightly creased. Cat. £22 (see Photo Plate II)	£12	1
210 ★	1868-71 CC 14 10c. lake, mint but heavily mounted, centred slightly to right. Cat. £18 (see Photo Plate II)	£7	1
211 ★	— \$1 green, fine but a minute thin and a few perfs. clipped short. Cat. £30 (see Photo Plate II)	£8	1
212 ○	Cancelleds: 1860 perf. 14 2½d. reddish rose (3) cancelled "1" in red (thinned), "10" and the last pen-cancelled "R" and showing part of a blue cachet. Also 1865-67 3d. pale blue (poor) cancelled "20" and Canada "Small Head" 1c. yellow cancelled "27" in a barred oval, stated by the owner only to have been in use one day	£8	5

**CANADA**

*IMPERF. PLATE PROOFS*

213 ⊕	1852-57 "Pence" Issues: ½d. rose, 3d. black, 3d. yellow, 6d. slate-lilac and 6d. purple on thin paper, fine but a few slight thins. Also 7½d. orange, mounted on card, and 7½d. green, slightly defective	£15	7
214 ⊕Ⓢ	— ½d., 6d. (slight thin), 7½d. (3) and 10d. (3), one of the last in blue, the others in black, all on thin paper and overprinted "SPECIMEN" in red in two different types	£10	8
215 ⊕⊞	— 3d. red on thin paper, a fine block showing a few letters of marginal inscription at foot (see Photo Plate III)	£25	4
216 ⊕Ⓢ⊞	— 6d. slate on thin paper, a fine marginal block, each stamp optd. "SPECIMEN" vertically in red, one with a small rust stain	£10	4
217 ⊕Ⓢ⊞	— 6d. indigo, a similar block, similarly overprinted	£10	4
218 ⊕Ⓢ⊞	— 10d. deep blue, a similar block, not marginal, similarly overprinted	£12	4
219 ⊕Ⓢ	— 12d. black on thin paper, similarly overprinted (see Photo Plate III)	£30	1
220 ⊕Ⓢ	— Ditto, as last, a similar copy but stuck down on card (see Photo Plate III)	£30	1
221 ⊕Ⓢ	— Ditto, as last, a very fine pair, not on card, faint crease (see Photo Plate III)	£50	2

DO YOU READ  
 "THE PHILATELIST AND POSTAL HISTORIAN"?  
 20/- per annum, post free

## CANADA

Lot	Description	2.5 p.m.	Valuation	Stamps
222	Ⓟ 1859-64 "Cents" Issues: 1c. rose, 5c. yellow, 10c. purple, 10c. brown, 12½c. black, 12½c. green (3) and 17c. deep blue, all on thin paper, two optd. "SPECIMEN", mostly fine but a few thins		£24	9
223	Ⓟ — 1c. orange, 1c. black, 2c. deep rose and 2c. green in imperforate horizontal pairs on thin paper		£15	8
224	★ — 1c. rose, variety imperforate, a fine horizontal pair on medium wove paper; probably of proof status but S.G. 30a		£25	2
225	Ⓟ Ⓜ — 10c. deep grey-brown on thin paper, a fine block, each stamp optd. "SPECIMEN" diagonally in red		£10	4
226	Ⓟ Ⓜ — 10c. red-purple on thin paper, a fine block showing part of marginal inscription at top (see Photo Plate III)		£15	4
<b>THE ISSUED STAMPS — 1851-58 "PENCE" ISSUES</b>				
227	A collection of second-rate copies comprising 3d. (12) including a defective pair and a single with faked perf. 14, 6d. (2, one with large margins three sides), 7½d. (tear), 10d. 3, one with large margins but cleaned) and ½d. (5). Five are apparently unused but thinned or slightly cut into. Several stamps are very good and the lot deserves examination		£25	22
228	○ Laid paper imperf. 3d. red, clearly cancelled and with good margins. Cat. £25 (see Photo Plate III)		£8	1
229	○ — Ditto, a very fine example showing re-entry (No. 61 on the lower pane), lightly cancelled and with very large margins (see Photo Plate III)		£20	1
230	○ — Ditto, deep and pale shades, the last cancelled in blue but slightly soiled at left. Cat. £50		£10	2
231	○ — 6d. slate-violet, a beautiful copy with huge to large margins, very fine in all respects. Cat. £44 (see Photo Plate II)		£24	1
232	○ — Ditto, a greyish shade with large margins three sides, frame line touched at N.E. corner only, a slight vertical crease (see Photo Plate II)		£10	1
233	○ — Ditto, another fine copy with clear margins except where frame line is touched at top (see Photo Plate II)		£10	1
234	○ — Ditto, attractive copies, both with faces practically clear of cancellations, the first with frame line clipped at top and a tiny surface rub, the last slightly cut into at foot (see Photo Plate II)		£10	2
235	○ — 6d. brown-purple, a pale shade with large margins three sides, frame line touched at S.W. corner only. Cat. to £55		£15	1
236	○ — Ditto, another with small clear margins all round (see Photo Plate II)		£15	1
237	Ⓜ — Ditto, a beautiful deep shade, lightly tied to an 1853 cover from which it has been partly raised and from which the name of the addressee has been excised; the frame line is touched at top, otherwise clear (see Photo Plate IV)		£18	1
238	○ Thin wove paper imperf. 3d. red (2) and 3d. deep red, selected copies with clear to large margins, one lightly cancelled in blue. Cat. £38		£12	3
239	○ — Ditto, the large re-entry (No. 80 on the upper pane), lightly cancelled and showing marginal inscription at right. There is a small pin-hole in right margin (see Photo Plate III)		£30	1
240	○ — 6d. slate-violet, a fine example with good margins. Cat. £65 (see Photo Plate II)		£25	1
241	★ Medium wove paper imperf. 3d. red, a very fresh unused copy with good margins, a tiny corner crease. Cat. £25 (see Photo Plate III)		£12	1
242	★ — Ditto, another with irregular margin and frame touched at one point at foot (see Photo Plate III)		£8	1
243	Ⓜ — 6d. slate-violet, a very fine copy with good to large margins used with a fine 3d. deep red (creased by paper fold) on an 1857 cover which has been damaged at back by heavy mounting (see Photo Plate V)		£50	2
244	○ — Ditto, a fine example with large margins two sides and clear the others. Cat. £48 (see Photo Plate II)		£11	1

For details of *THE ASSOCIATED EXCHANGE CLUBS* write to  
The Secretary, Granville Chambers, Richmond Hill, Bournemouth



## CANADA

<i>Lot</i>	<i>Description</i>	<i>Valuation</i>	<i>Stamps</i>
	<b>1851-58 Medium Wove Paper—continued</b>	<b>2.10 p.m.</b>	
245 ○	— 6d. greenish grey, a lightly cancelled copy with very large margins clear at top and only just touched at right; very fine. Cat. £65 (see Photo Plate II)	£12	1
246 ○	— Ditto, another, very fine, clear to large margins (see Photo Plate II)	£12	1
247 ○	— Ditto, another, lightly cancelled in blue, clear to large margins but thinned. With R.P.S. certificate (see Photo Plate II)	£10	1
248 ○	— Another, of fine appearance but with S.E. corner thinned; also 6d. brownish grey, fine and lightly cancelled; both close or touched in places. Cat. £123	£12	2
249 ★	Thick wove paper imperf. 3d. red, a fine unused example showing small part of marginal imprint at top, good margins but a small crease or closed tear at N.W. corner. Cat. £45 (see Photo Plate III)	£14	1
250 ○	— 6d. grey-lilac, a very fine copy with large margins. With R.P.S. certificate. Cat. £95 (see Photo Plate II)	£35	1
251 ○	Very thick soft paper imperf. 6d. reddish purple, a fine and lightly cancelled example with good margins three sides, the frame line clipped at foot. Cat. £90 (see Photo Plate II)	£30	1
252 ○	Thin soft ribbed paper imperf. 3d. red, lightly cancelled in blue and with huge margins three sides, superb but for small thins (see Photo Plate III)	£28	1
253 ○	— Ditto, another, very fine and lightly cancelled, close but not touched at foot (see Photo Plate III)	£8	1
254 ○	Thin brittle wove paper imperf. 3d. red, a fine copy with good margins. Cat. £35 (see Photo Plate III)	£10	1
255 ○	Thin wove paper imperf. 10d. dull blue, fairly lightly cancelled "21" and with very good margins except at extreme N.E. corner; very fine. Cat. £50 (see Photo Plate II)	£10	1
256 ○	Medium wove paper imperf. 10d. bright blue, very fine and fairly lightly cancelled, with large margins except where frame line is cut at one point at top. Cat. £50 (see Photo Plate II)	£10	1
257 ○	— 10d. Prussian blue, clearly cancelled and with small even margins. Cat. £45 (see Photo Plate III)	£30	1
258 △	— 7½d. yellow-green, an attractive copy fairly lightly cancelled "21" on small piece, with good to large margins except where nicked at right, small part of marginal imprint at top. Cat. £70 (see Photo Plate V)	£40	1
259 △	— Another, lightly cancelled "27" on small piece, frame line clipped at top and close at foot (see Photo Plate II)	£12	1
260 ○	— Ditto, an attractive copy with light dated cancellation, large margins at sides but frame line clipped at top and close at foot (see Photo Plate II)	£10	1
261 ○	— A deep shade, clearly cancelled "21", very close and a faint crease (see Photo Plate II)	£10	1
262 ★	— ½d. deep rose, good unused, slightly creased and thinned but large margins. Cat. £25 (see Photo Plate II)	£8	1
263 ○	— Ditto, a lightly cancelled copy with huge margins, superb but for a small closed tear at top. Cat. £18 (see Photo Plate II)	£10	1
264 ○	— Another, lightly cancelled, just touched at N.W. corner and creased at S.W.	£5	1
265 ○	Vertically ribbed soft paper imperf. ½d. deep rose, fine and lightly cancelled but close at top, a closed tear in left margin and very slightly thinned. Cat. £55 (see Photo Plate II)	£9	1
266 ★	Perf. 11½ ½d. deep rose and 3d. red, fresh unused copies, both slightly thinned and the last with a few perfs. pulled at top. Cat. £70 (see Photo Plate II)	£20	2
267 ★	— 3d. red, mint but heavily mounted and very slightly thinned thereby, centred slightly to left but very good for this stamp. Cat. £40 (see Photo Plate III)	£25	1
268 ○	— Ditto, an attractive copy with very light datestamp, centred to top and one perf. missing. Cat. £17	£5	1
269 ○	— Good used copies, one centred to foot. Cat. £34	£8	2

## CANADA

Lot	Description	Valuation	Stamps
1858 Perf. 11½—continued		2.17 p.m.	
270 ★	— 6d. brownish grey, very fine unused, centred slightly to foot and a few small rust stains but a grand example of this stamp. Cat. £110 (see Photo Plate III)	£50	1
271 ○	— 6d. slate-violet, a superb copy, centred very slightly to foot. With R.P.S. certificate. Cat. £60 (see Photo Plate III)	£48	1
<i>1859-64 PERF. 12</i>			
272 ★	1c. pale rose, 1c. deep rose, 2c. bright rose, 5c. red (2), 10c. purple, 10c. brownish purple, 10c. brown, 10c. red-purple, 12½c. yellow-green, 17c. deep blue (2) and 17c. slate-blue, all apparently unused but mostly without gum and some of the rare stamps with small defects. Cat. nearly £200	£25	13
273	1c. (3), 5c. (3), 10c. (6), 12½c. (2) and 17c., several apparently unused but slightly stained, two pen-cancelled, the others poor to good used, one 10c. repaired	£4	15
274 ○	1c. (3), 2c., 5c. (2), 10c. purple (2), 10c. brown-purple, 10c. brown, 10c. red-purple, 12½c. yellow-green, 12½c. blue-green, 17c. deep blue (surface thin) and 17c. indigo, fair to fine, some off centre. Cat. £57	£10	15
275 ○	1c. (2), 2c. (imprint at left), 10c. purple (2) and 10c. brown (tear in left margin), all selected for cancellations, two dated, one "47" and all the 10c. cancelled in red or in blue	£7	6
276 ★	2c. rose-red and 2c. bright rose, fine and well centred but without gum. Cat. £28	£8	2
277 ☒	5c. red, good copies used on separate covers, one pen-cancelled but showing traces of re-entry at right	50/-	2
278 ○	— A fine example of a major re-entry, lightly cancelled but centred to S.E. and a few perfs. blunt. Cat. £25 (see Photo Plate III)	£8	1
279 ○	— Variety imperf., lightly cancelled, large margins three sides and clear at left. Offered on its merits and not subject to return (see Photo Plate III)	£10	1
280 △	— A diagonal bisect well tied to small piece and to 10c. deep purple. Rare. Cat. £64 (see Photo Plate V)	£30	2
281 ★	10c. black-brown, a very good unused example, centred to left and with R.P.S. certificate stating that it is partly re-perforated. Cat. £140 (see Photo Plate II)	£20	1
282 ○	— Another, extremely lightly cancelled, centred slightly to S.E. and a little soiled. Cat. £40 (see Photo Plate III)	£25	1
283 ○	10c. dark brown, another early shade, very fine and lightly cancelled (see Photo Plate II)	£5	1
284 ★	10c. purple, very fine and with much original gum, a corner perf. rough but well centred. Cat. £20 (see Photo Plate II)	£12	1
285 ★	10c. brown-purple and 10c. brown, attractive copies, the first without gum and the last with a few perfs. rough. Cat. £42	£10	2
286 ★	10c. brown-purple, very fine and well centred, much original gum. Cat. £20 (see Photo Plate II)	£11	1
287 ★	10c. brown in similar condition, centred slightly to S.E. and a corner perf. rough. Cat. £22	£6	1
288	10c. reddish purple in similar condition, centred to top and a few perfs. rust stained. Cat. £16	£7	1
289 ○	10c. purple, 10c. brown-purple, 10c. brown and 10c. red-purple, selected copies. Cat. 310/-	£5	4
290 ○	10c. purple (two shades), 10c. brown (paper discoloured) and 10c. red-purple, fair to fine. Cat. 310/-	£5	4

## NEW ZEALAND

CAMPBELL PATERSON'S CATALOGUE. THIS UNIQUE LOOSE-LEAF CATALOGUE IS A PERMANENT, ADJUSTABLE GUIDE FOR COLLECTORS OF THE POSTAGE STAMPS OF NEW ZEALAND FROM 1855 TO THE PRESENT DAY. SUPPLEMENTARY PAGES ARE ISSUED FROM TIME TO TIME AND THE PRICE FOR THE ORIGINAL CATALOGUE IS ONLY 50/- INCLUDING POSTAGE. SOLE AGENT OUTSIDE AUSTRALASIA: ROBSON LOWE, LTD.,  
50 PALL MALL, LONDON, S.W.1

## CANADA

Lot	Description	Valuation	Stamps
-----	-------------	-----------	--------

2.22 p.m.

## 1868-78 LARGE HEADS

291	★ 1868 thin paper 1c. and 6c. and 1868-72 ½c. (2), 1c. (2), 2c., 3c., 6c. (2), 12½c. (2) and 15c. (5), 1873-76 5c. (2) and 1869 1c., unused or mint shades, majority fine. Cat. £160	£50	20
292	— ½c., 3c. (3) and 15c., 1868-72 ½c. (3), 1c., 2c. (4), 3c. (4), 6c. (5), 12½c. (2), 15c. (6), 1873-78 5c. and 1869 1c. (2), seven unused or mint, majority fine. Cat. £61	£15	33
293	○ 1868-72 1c. red-brown, variety on laid paper, slightly off centre and with two small thins. Rare. Cat. £50 (see Photo Plate II)	£12	1
294	○ — 1c. brown with "M", 3c. brown with "W" and 12½c. blue, all watermarked, and 3c. brown on laid paper, good to fine. Cat. £38	£10	4
295	○ — 2c. green (2) and 12½c. blue, the first two with oval barred cancellations, the last with central c.d.s. of St. John, New Brunswick	£6	3
296	○ — 2c. bluish green, variety watermarked "WH", fine with cancellation clear of head, a little off centre. Cat. £18 (see Photo Plate II)	£8	1
297	★ — 3c. red-brown, variety on laid paper, with some gum but centred to lower right, small thin spot. Cat. £50 (see Photo Plate II)	£7	1
298	○ — 6d. blackish brown, variety watermarked "CLJ", fine and lightly cancelled, centred to lower right. Cat. £45 (see Photo Plate II)	£20	1
299	○ — 15c. dull violet-grey, variety watermarked "LO", faded and with some perfs. ragged, fairly well centred. Cat. £22 (see Photo Plate II)	£10	1
300	○ 1873-78 5c. olive-green, a horizontal pair, fairly lightly cancelled but centred to lower left	£5	2

## 1870-98 SMALL HEADS

301	★ An unused or mint collection with 1870-88 to 10c. (3), 1883-97 to 10c. (2) and 1898 8c. (2) with shades of the 3c. including the first. Cat. about £75	£25	33
302	An unused and used collection with 1870-88 to 10c. (8), 1898 8c. (19), 20c. (2) and 50c. (2) with shades and cancellations, about twenty-five unused or mint	£12	89
303	★ 1870-88 2c. green (marginal) and 1882-97 ½c. black, each in an imperforate horizontal pair, much original gum, the ½c. with small thin. Cat. £24	£15	4
304	☒ — 6c. yellowish brown, variety bisected diagonally, fine used on 1876 cover from Riversdale to Toronto, cover a little stained. Cat. £50 (see Photo Plate IV)	£25	1
305	★ 1882-97 ½c. black, a marginal horizontal pair, variety imperforate between, much original gum but heavily mounted. Cat. £30 (see Photo Plate V)	£20	2
306	★ 1883-97 3c. bright vermilion, an imperforate horizontal pair. Cat. £12	£5	2
307	★ — 6c. deep chestnut, variety imperforate, a horizontal pair with much original gum	£14	2
308	★ — 10c. brownish red and 1893 8c. bluish grey, each variety imperforate, some original gum, the last very slightly thinned	£5	2

309	★ 1897 Jubilee ½c. to \$5 complete with additional 5c. and 50c., unused with some original gum. Cat. £97	£30	18
-----	--	-----	----

310	○ — ½c. to \$5 complete with datestamps. Cat. £84	£40	15
-----	---	-----	----

311	1897-98 ½c. to 10c., 1898-1902 including 7c., 8c. and 20c. in blocks of four, unused or mint but six, a few thinned. Cat. 715/-	£12	54
312	★ 1899 TWO CENTS on 3c. rose-carmine, variety surcharge inverted, fine unused with much original gum. Cat. £30	£15	1
313	Registration Stamps: 1875-88 2c. (14), 5c. (6) and 8c. (2, unused and used) with shades; also Fiscals to \$3	£9	69

BOUND "R.L." AUCTION CATALOGUES ARE INVALUABLE WORKS OF REFERENCE — 1955-56 Great Britain, British Empire, Foreign and Postal History, price 21/- each plus postage

## BRITISH NORTH AMERICA

Lot

Description

Valuation  
2.29 p.m.

Stamps

## NEW BRUNSWICK

314	1851	3d. red (one unused and five used examples), 6d. (three used) and 12d. mauve (creased), most cut into, touched or close	£30	10
315	Ⓟ	— 3d. in orange, 6d. and 1/- in violet-black, the 1890 reprints	£6	3
316		— 3d. and 12d. engraved forgeries in black, a sheet of four of each	£20	8
317	Ⓟ	— 6d. and 12d. original plate proofs in black, close to large margins	£12	2
318	△	— 6d. olive-yellow, variety bisected vertically, used on small dated piece, slight crease. Cat. £100 (see Photo Plate IV)	£30	1
319	Ⓟ	1860-63 colour proofs in horizontal pairs of the 1c. in violet and in magenta, 2c. in yellow, 5c. in yellow and in green and 17c. in black, all on thin paper	£6	12
320	Ⓟ	— 1c., 2c., 5c. (4), 10c. (5), 12½c. (5) and 17c. (2) imperforate colour proofs in black, green, yellow, orange or blue, five overprinted "SPECIMEN"	£10	18
321		— 1c. (5), 2c. (3), 5c. (7), 10c. (2), 12½c. (2) and 17c., four unused or mint, good to fine shades	£5	20
322	★	— 5c. brown (Connell) with perforations cut off nearly all round, traces of gum (see Photo Plate II)	£15	1
323	Ⓟ	— Ditto, an imperf. proof in yellowish brown on thin paper and another in black-brown overprinted "SPECIMEN" and with forged perforations	£4	2
324	Ⓟ	— 10c., cut down die proofs in black, one with thin spots	£7	2

## NEWFOUNDLAND

325	★	1857 1d. and 5d. brown-purple and 1861-62 2d., 4d. (2), 5d. to 1/- (2), good to fine unused or mint. Cat. 675/-	£9	11
326		— 1d. brown-purple unused and used and 1860 3d. and 5d. chocolate-brown unused; also 4d. orange-vermilion, used but repaired	£8	4
327	○	— 2d. scarlet-vermilion, a fine looking example with outer frame line cut away at right. Cat. £250 (see Photo Plate V)	£100	1
328	★	— 3d. green and 5d. brown-purple, close to very large margins. Cat. £18	£6	2
329	○	— 4d. scarlet-vermilion, good regular margins and clear cancellation, small thin at upper left. Cat. £140 (see Photo Plate V)	£25	1
330	★	— 6½d. scarlet-vermilion, fine with three large margins but touched at foot. Cat. £70 (see Photo Plate V)	£15	1
331	★	— 8d. orange-vermilion, three large margins but close along top, small thin spot	£3	1
332	○	— 1/- scarlet-vermilion, good regular margins and clear cancellation but defect at left. Cat. £200 (see Photo Plate V)	£40	1
333	★	1860 2d. orange-vermilion, good regular margins and natural horizontal wavy paper flaw. Cat. £16	£6	1
334	○	— 6d. orange-vermilion, good to large margins, fairly lightly cancelled. Cat. £48 (see Photo Plate V)	£20	1
335	★	1861-62 1d. chocolate-brown, 2d., 4d., 5d. (both), 6d., 6½d., 8d. and 1/-, clear to large margins, unused or mint. Cat. 508/-	£7	9
336	○	— 4d. (2), 6d. (4), 6½d. and 1/-, also 1857 1d. (cut into), close to large margins, some undoubtedly correct cancellations. Cat. £38	£7	9
337	○	— 2d. rose-lake, good to large margins and barred cancellation. Cat. £16 (see Photo Plate V)	£8	1
338	○	— Ditto, close to large margins, similarly cancelled	£7	1

BRITISH NORTH AMERICA

Lot	Description	2.34 p.m.	Valuation	Stamps
339	Ⓟ 1866-68 perforated colour proofs of the 2c., 5c. and 13c. in bright blue and of the 5c. and 10c. in emerald-green, thick treacly gum		£20	5
340	Ⓟ — 1c. in dark blue, 10c. in bright blue (colour run at foot) and 2c. in green; rather similar proofs		£9	3
341	1866 on yellow to 24c. including 5c. brown and on white to 24c. (used), 1868 1c., 1868-73 to 6c., 1876-79 rouletted to 5c., 1880-97 to 12c., 1890 3c. (10), 1897 1c. provisionals (all three types) and 1897-1918 to 50c.; forty are unused or mint. Cat. £67		£12	54
342	Ⓟ — 5c., 10c. and 13c., imperforate proofs in emerald-green		£5	3
343	★ — 5c. brown, unused with much original gum, centred to top and with part marginal inscription at left, some perfs. missing. Cat. £20		£5	1
344	☒ — 5c. brown, centred to lower right, 1868 5c. black and 1876 5c. blue, each used on separate covers. Cat. 347/-		£8	3
345	○ — Ditto, small repair at upper left, 1876-79 6d., each with fine "cork" cancellation, and 1880 3c. with "6" cancellation		£5	3
346	Ⓢ — 5c., die proof of the essay in green on thin paper and in the design of the issued 10c., slightly creased (see Photo Plate V)		£8	1
347	Ⓟ — 2c., 13c. (4) and 24c., 1868 1c. (8), 3c. (4) and 6c. (2), colour proofs on thin paper, one in pair, the others all different		£15	19
348	★田 1897 "ONE CENT" on 3c. grey-purple, a corner block showing three type I, one type II and two type III surcharges. much original gum as block is partly stuck down. Cat. £33		£12	6
349	1910 1c. to 60c., unused and used sets, slight duplication. Cat. 346/-		90/-	30

NOVA SCOTIA 1851

350	Ⓟ 1d., original plate proof in black on thick card, a fine pair		£12	2
351	Ⓟ 1890 reprints of the 1d. in brown, 6d. in deep green and 1/- in violet-black		£10	3

352	○ 1d. (2), 3d. (6), 6d. light green (3), 6d. dark green (4) and 12d., also 3d. and an unsatisfactory bisected 6d. used on separate covers, poor to good		£30	18
-----	---	--	-----	----

353	★ 1d. red-brown, fine looking example with close to large margins, small defects. With R.P.S. certificate. Cat. £45 (see Photo Plate V)		£8	1
354	★ — Fine with close to large margins, slight crease (see Photo Plate V)		£15	1
355	○ — Fine with good to large margins, lightly cancelled. Cat. £28 (see Photo Plate V)		£14	1
356	○ — A rather similar example cut very close at right, clearly cancelled (see Photo Plate V)		£8	1
357	○ — Close to large margins, lightly cancelled		£7	1
358	Ⓟ 3d., 6d. and 12d., original plate proofs in black on thick card, close to large margins		£18	3
359	○ 3d. blue (2, shades), 6d. yellow-green and 6d. deep green, clear to large margins, the last touched on one side. Cat. £125		£15	4
360	△ 3d. bright blue, two whole stamps and one bisected diagonally used on small piece, large margins. Cat. over £55 (see Photo Plate IV)		£20	3
361	○ 3d. blue, bisected diagonally, used on small piece with 6d. deep green. With B.P.A. certificate. Also 6d. yellow-green, clear to large margins but small repair. Cat. over £95 (see Photo Plate IV)		£15	3
362	★ 6d. yellow-green, unused with regular margins but small marginal defect at upper left. Cat. £60 (see Photo Plate IV)		£10	1
363	○ — Fine with clear to very large margins, lightly cancelled. Cat. £45 (see Photo Plate IV)		£28	1
364	☒ — Variety bisected, used on August 1860 cover from Lower Horton to Halifax, barely tied by barred cancellation. Cat. over £65 (see Photo Plate IV)		£28	1
365	Ⓟ 6d. deep green, the 1890 reprint		£3	1

366	★ 1/- purple, a good looking example with large regular margins, twice creased (see Photo Plate IV)		£40	1
-----	---	--	-----	---

367	○ — An example with three good to large margins but touched at one corner, lightly cancelled (see Photo Plate IV)		£20	1
-----	---	--	-----	---

BRITISH NORTH AMERICA

Lot	Description	2.42 p.m.	Valuation	Stamps
Nova Scotia—continued				
368	Ⓟ 1860-63 1c. (3), 2c., 5c. (3), 8½c., 10c. (5) and 12½c. (2), imperforate colour proofs, six overprinted "SPECIMEN"		£10	15
369	— Yellow and white papers to 12½c. (7, two with mailboat cancellations), about half unused or mint		£12	31
370	Ⓟ — 5c. and 10c. in blue, 10c. in black, in green, in orange and in brown, colour proofs on India on thick card		£6	6
371	Ⓡ — 10c. vermilion, variety bisected diagonally, used on 1861 cover from Halifax to Canning. With Philatelic Foundation's certificate. Cat. over £50 (see Photo Plate IV)		£8	1

PRINCE EDWARD ISLAND

372	1861 perf. 9 2d. (4) and 6d. (3), 1862-68 to 9d. (3), 1870 4½d. (3) and 1872 to 12c. (2), two-thirds unused or mint, poor to fine condition		£10	63
373	★ — 3d. blue, fine unused with original gum, a perf. pulled. Cat. £18 (see Photo Plate II)		£8	1
374	○ — Ditto, fine and clearly cancelled. Cat. £12 (see Photo Plate II)		£6	1

THE END OF THE SALE

## BERMUDA

A MONOGRAPH, "Bermuda—The Handstruck Stamps and Cancellations", by M. H. Ludington, was published in December by Robson Lowe Ltd. This volume contains a record commencing with the first colonial post offices in 1812 and brought up to date at the end of 1955. Bermuda has a particular appeal, for it is the only part of the British Empire where postmasters used their handstruck stamps in order to manufacture local adhesives. The "Crowned Circle" and Ship Letter types, the Bar and Duplex Cancellations (the last so reminiscent of the London types), the charming names (Paget West, Bailey's Bay, Crawl, Ireland Isle), the Forwarding Agent's and Air Mail Cachets, Paquebot Cancellations, Franks and Censor Marks of the three wars (the first, the Boer War, provides the most popular of all censor marks), all attribute their share to the attractions of Bermuda's postal history.

The author has included sections on Forged Cancellations and Valuations. The last are revealing, for the pre-adhesive period shows prices from £2 to £75 while the ceiling for the rarest bar cancellation is £25. Compared with auction realisations, such prices are realistic, but it is the first time that one has seen the complete picture and it is a shock to find that a fairly complete collection can be worth over £2,000.

In addition to over a hundred and forty line illustrations, there are four post offices, seven covers and a charming map drawn by the author, illustrated in half-tone.

The volume is published at 15/- (plus 1/- postage and packing), but old and new subscribers to "The Philatelist and Postal Historian" for five years or more at one time may order their copy free of charge. The edition is limited to 500.

# — AUCTION PROGRAMME —

## FOR THE NEW YEAR

- JANUARY 5** **GENERAL SALE at BOURNEMOUTH** (Nos. 1542-44; times 10.30 a.m., 11.15 a.m. and 2 p.m.). Collections and **Mixed Lots, Classified Foreign** (strong in China) and **Modern British Empire 1937-56, Classified British Empire** with strength in **Great Britain and Malaya**. The main property, which runs throughout the sale, is the "**Wilfred Stephens**" collection, broken into collections by countries. Catalogue 1/-.
- JANUARY 9** **BRITISH EMPIRE** (Sale Nos. 1545-46; times 11 a.m. and 2 p.m.). Including the fine collection formed by **A. M. McGrigor, Esq.**, of Dunblane, with strength in **New Zealand** (which includes the "**C. W. Meredith**" **Crowned Circles**) and **St. Vincent** (the "**W. L. Margetson**" collection) and a strong section of **King George VI** issues (including the collection formed by **D. B. Stewart, Esq.**, of Dundee). Catalogue 1/-.
- JANUARY 16** **GREAT BRITAIN** (Sale Nos. 1547-48; times 11 a.m. and 2 p.m.). Including the fine collections offered by the order of **Edward R. Marshall** of Rugby and **Douglas B. Stewart** of Dundee, with considerable strength in **Line-Engraved** as well as a charming study of the **Perforated Two Penny "Stars"** and **superb used surface printed** offered by the order of **G. A. R. Spence** of Dundee. Catalogue 1/-.
- JANUARY 30** **FOREIGN** (Sale Nos. 1549-50; times 11 a.m. and 2 p.m.). Including the "**Col. F. F. Duffus**" **France**, the "**Louis Cahen**" **German and Italian States** and stamps of other Foreign countries with valuable collections offered intact and/or rarities of **French and German Colonies, Siam, Switzerland, Tibet, Turkey, United States and Yugoslavia**. Catalogue 1/-.
- FEBRUARY 2** **GENERAL SALE at BOURNEMOUTH** (Sale Nos. 1551-52-53; times 10.30 a.m., 11.30 a.m. and 2 p.m.). Including **Collections and Mixed Lots, Classified Foreign, Airmails, Modern British Empire**. Included in this sale are the valuable properties offered by the order of **N. Alkers** of Bournemouth, **Mrs. Alice Begg** of Lochee, **Major P. I. Laughton** of Fort George, **Mrs. A. R. Parker** of Bracknell, **W. H. White** of London and the executors of the late **Herbert Vickers** of Leeds. Catalogue 1/-.
- FEBRUARY 6** This catalogue.

PRICES REALISED: 2/6, including postage. Available about four weeks after the sale.

**ROBSON LOWE LIMITED**

**50 PALL MALL, LONDON, S.W.1**

Telephone: TRAFalgar 4034

Cables: "Stamps, London"

PLATE V



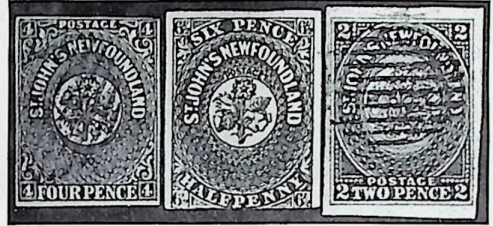
107



327

332

334



329

330

337



346



353

354

355

356



258

280



305



243