

**BURRUS**  
**29 NOV. 62**  
**BRITISH EMPIRE**

**Barbados**

**CAYMAN ISLANDS    TOBAGO**

**Turks Islands**

**VIRGIN ISLANDS**

**BASUTOLAND    BECHUANALAND**

**NORTH BORNEO**

**SAMOA    TONGA**

**New Brunswick**

**Nova Scotia**

**etc., etc.**

## THE COLOUR PLATES

for the Burrus sales being held on 27th, 28th, 29th and 30th November, are all contained in a separate volume entitled "Burrus Colour Plates".

### Guarantees and Expert Opinions

The stamps in these sales have been guaranteed genuine and have been carefully examined by the expert staff of the Auctioneers. A request for an extension so that a second expert opinion may be sought, can only be granted when the buyer has made application *prior to the auction*, stating that an extension will be required, and *giving the reason*. In no case will an extension be given that necessitates more than two months' delay from the date of the sale and should the buyer fail to obtain an opinion by the 30th January 1963, the buyer will forfeit the right to return a lot for any reason.

The following expert opinions are the only ones recognised by the auctioneers for these particular sales:

- British Empire and Egypt* — The Expert Committee of the British Philatelic Association and the Royal Philatelic Society.  
*Greece* — As above and Diena of Rome and the Philatelic Foundation of New York.

Any lot, description of which is incorrect, is returnable only within three days of receipt. All disputed lots must be returned intact as received.

Lots containing five or more stamps are not returnable at any time.

No lots may be returned by purchasers or their agents who have had the opportunity to examine them before the sale.

Stamps described as having defects are not returnable on account of their condition. Stamps cannot be returned on account of the centering or the amount of margin when such stamps are illustrated.



### Special Conditions Applying to the Burrus Collection

1. *The Title of Ownership* shall remain with the AMHELCA TRUST until payment is received and delivery made to the buyer.
2. *Bids* will only be accepted from clients unknown to us when accompanied either by a deposit of 25% of the total sum bid or London references which are considered satisfactory by the auctioneers.
3. *Delivery of Lots*: Delivery of lots will be made as follows:  
The clients *known to us* bidding
  - a) in the room — when the hammer falls,
  - b) through the post — within seven days of the sale.The clients *unknown to us* bidding
  - a) in the room — after cash payment or when a cheque has been cleared,
  - b) through the post — after full payment has been received.
4. *Payment*:  
The clients *known to us* bidding
  - a) in person or through an agent in the room — within two days of the date of the sale,
  - b) through the post — immediately on receipt of the Invoice.The clients *unknown to us* will pay in the same manner although receiving credit for the deposit paid at the time of their bids. (See Condition 2).
5. *Credit Terms*: Should any buyer wish to make an arrangement for credit, such an arrangement must be made and agreed to in writing prior to the sale. This regulation is necessary as our contract with the Vendors provides for full settlement within five days of the sale.
6. The receipt of a bid through the post or in the room implies that the bidder agrees to these conditions.

**SPECIAL NOTE:** The attention of buyers in Europe is drawn to the fact that no additional charge is made on the price at which the lot is knocked down by the auctioneer other than mailing and insurance charges.

*For Standard Conditions of Sale — see inside back cover*

SALE Nos. 2212-14

THE BURRUS COLLECTION

# BRITISH EMPIRE

will be offered for unreserved sale  
at auction  
by the order of the Amhelca Trust of Vaduz  
at 11 a.m., 12.15 p.m. and 2 p.m.

Thursday, 29th November, 1962

in the Prince Edward Suite  
at the

PICCADILLY HOTEL

LONDON, W.1

by

*ROBSON LOWE LTD.*

*50 Pall Mall*

*London S.W.1*

Telephone: TRAfalgar 4034

Cables: Stamps, London, S.W.1

CATALOGUE 20/-

For your own convenience you are earnestly requested to read the conditions of sale on the inside front cover and the announcements on page 2 and the back cover.

# VIEWING

## *Through the Post*

Lots of a suitable size can be sent through the post for inspection, postage and insurance both ways to be borne by the client.

As the demand for inspection is considerable, applications should be sent as early as possible.

*At 50 Pall Mall* - In the Third Floor Show Rooms  
 Monday to Friday 19th to 23rd November, 10 a.m. to 5 p.m.  
 Saturday 24th November, 10 a.m. to 1 p.m.  
 Monday-Wednesday 26th to 28th November, 10 a.m. to 5 p.m.

At no time will the lots be on view at the Piccadilly Hotel.

We wish to record our grateful thanks to RENATO MONDOLFO of Rome and FRED RICH of New York for their valuable assistance and advice in preparing this portion of the Burrus collection for sale.

✱

## ARRANGEMENT OF THIS SALE

### FIRST SESSION AT 11 A.M.

#### WEST INDIES

Barbados	...	...	...	...	...	...	...	...	...	680-859
Cayman Islands	...	...	...	...	...	...	...	...	...	860-893
Tobago	...	...	...	...	...	...	...	...	...	894-913
Turks Islands	...	...	...	...	...	...	...	...	...	914
Turks and Caicos Islands	...	...	...	...	...	...	...	...	...	915-924
Virgin Islands	...	...	...	...	...	...	...	...	...	925

### SECOND SESSION AT 12.15 P.M.

AFRICA—Ascension, Basutoland	...	...	...	...	...	...	...	...	...	926-939
Bechuanaland, South Africa	...	...	...	...	...	...	...	...	...	940-970
ASIA—Brunei, North Borneo	...	...	...	...	...	...	...	...	...	971-1010
PACIFIC ISLANDS—Aitutaki, Rarotonga, Samoa	...	...	...	...	...	...	...	...	...	1011-1041
Solomon Islands, Tonga	...	...	...	...	...	...	...	...	...	1042-1066
EUROPE—Ireland	...	...	...	...	...	...	...	...	...	1067

### THIRD SESSION AT 2 P.M.

New Brunswick	...	...	...	...	...	...	...	...	...	1068-1128
Nova Scotia	...	...	...	...	...	...	...	...	...	1129-1199

★

Bids from Australian clients may be sent via our Australian agent:  
 GUY ROUND, 40 CANBERRA ROAD, TOORAK, VICTORIA.

# Catalogue

THURSDAY, 29th NOVEMBER, 1962

First Session at 11 a.m.

The use of symbols following the lot numbers is for the convenience of buyers and indicates:  
 ★ unused    ○ used    ☒ cover    △ on piece    ⊞ block of four    ⊞ block larger than four  
 ⊕ proof.

Catalogue values and numbers are those of Gibbons' 1963 edition. Where other catalogues are used they are mentioned by name. The abbreviation "c.d.s." indicates circular date-stamp.

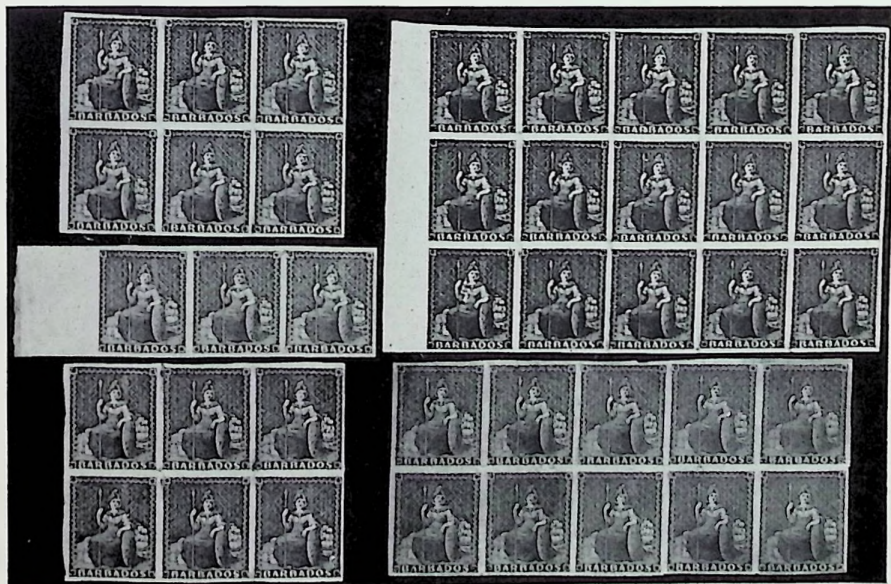
## WEST INDIES

### Barbados

1852-55 BLUED PAPER NO WATERMARK, IMPERFORATE

#### Mint

Lot No.	Description	Valuation	Photo Page
680 ★ ⊞	½d. deep green, superb block (3×2)	£35	3
681 ★	— Fine pair, tiny airhole	£7	
682 ★	— Two shades, 1d. blue, 2d. greyish slate, 4d. brownish red unissued in slate-blue (pair) and 1858 1/- brown-black and 1/- black, fine. six with some original gum. Cat. £71	£25	
683 ★	— And 2d. greyish slate, very fine. Cat. £25	£12	
684 ★ ⊞	1d. blue, a fresh block (3×3)	£18	
685 ★	— 1d. pale blue, 1d. deep blue and unissued in slate-blue, each in a fine horizontal pair	£12	
686 ★	1d. pale blue, a fresh marginal horizontal strip	£15	3
687 ★ ⊞	1d. deep blue, a superb marginal block (5×3)	£25	3



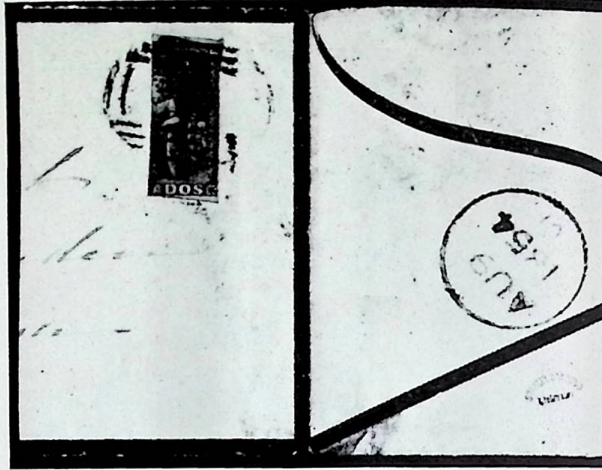
680  
686  
689

687  
692

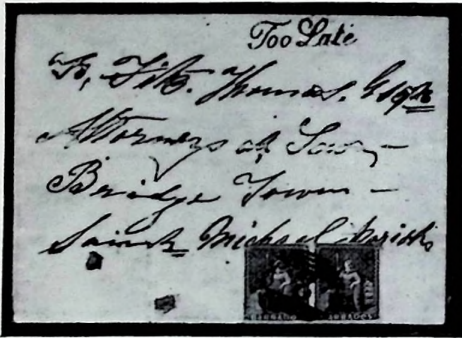
THE "BURRUS" BARBADOS



688



698



696



700



699

707

702

708

704

IF YOU HAVE LOTS FOR INSPECTION

please return them promptly; others may be wanting to see them as well

THE "BURRUS" BARBADOS



695

Ex 697

Lot No.	Description	Valuation	Photo Page
1852-55 MINT—continued		29 Nov. 1962	11.02 a.m.
688	★田 2d. greyish slate, a fresh block	£45	4
689	★田 — A similar block (3×2), two corner creases	£40	3
690	★ — A fine pair, rather heavily mounted	£18	
691	★ — A similar pair and unissued in slate-blue, a block of four, both fine. Cat. £42	£18	
692	★田 4d. brownish red, a fine block (5×2)	£30	3
693	★田 Unissued in slate-blue, a complete mint SHEET	£65	
694	★田 — A corner block (5×2) and a block of four	£8	
<i>Used</i>			
695	○ ½d. yellow-green, superb	£25	5
696	☒ — A pair used on July 22nd 1852 from Christ Church to "Bridgetown Saint Michael parish", superbly cancelled "2" and with full margins except at one corner, a little age-stained but a remarkable cover full of character	£40	4
697	○ 1d. blue, 1d. deep blue and 4d. brownish red, fine	£20	5
698	△ 2d. greyish slate, variety BISECTED VERTICALLY, used on half front and half back of a cover showing "6" cancel, touched at right yet well tied	£65	4

1855-61 WHITE PAPER, NO WATERMARK

*Imperforate mint*

699	★ ½d. yellow-green, very fine	£18	4
700	★田 ½d. green, a fresh marginal block (3×3)	£60	4
701	★ 1d. deep blue, a horizontal and a vertical pair and a marginal block of four, the last just touched	£10	
702	★ 4d. brownish red, a fresh pair on white paper or nearly so	£50	4
703	★田 6d. deep rose-red, a brilliant UNUSED BLOCK, sans gum	£200	5
704	★ — Fresh and superb colour	£40	4
705	★ 1/- brown-black and 1/- black, fine unused	£9	
706	★田 1/- black, a superb block	£65	5
707	★ 1/- black, a fresh pair	£25	4
708	★ — A similar but unused pair, close at foot	£15	4



703

706

1855-61 WHITE PAPER, NO WATERMARK



711                      712                      714                      717                      718

Lot No.                      Description                      29 Nov. 1962                      11.07 a.m.                      Valuation                      Photo Page

*Imperforate used*

- |     |    |  |     |   |
|-----|----|--|-----|---|
| 709 | ○  | ½d. yellow-green, 1d. pale blue, 1d. deep blue, 6d. pale rose-red and 6d. deep rose-red, selected shades with clear to large margins. Cat. £61 | £20 |   |
| 710 | ○  | 1d. blue, four contrasting shades from very pale to a steely blue, fine to superb  | £12 |   |
| 711 | ○○ | 6d. pale rose-red, fine and cancelled "10", two small corner faults  | £8  | 6 |
| 712 | ○○ | — Fine and cancelled "5"   | £8  | 6 |
| 713 | ○○ | — And 6d. deep rose-red, full margins, the last with small corner thin   | £12 |   |
| 714 | ○○ | 6d. deep rose-red, very fine with three huge margins   | £10 | 6 |
| 715 | ○○ | 6d. pale rose-red, 6d. deep rose-red and 1/- black, two shades, clear to very large margins  | £24 |   |
| 716 | ○○ | 1/- brown-black, very fine   | £8  |   |
| 717 | ○○ | 1/- black, very fine   | £10 | 6 |
| 718 | ○○ | 1/- purple-black, very fine  | £15 | 6 |

*Imperforate on covers, arranged chronologically*

- |     |   |  |     |   |
|-----|---|--|-----|---|
| 719 | ⊗ | 1857 (Nov. 11th) cover to St. Lucia bearing two imperforate 1d. deep blue placed attractively in the two upper corners | £16 |   |
| 720 | ⊗ | 1857 (Nov. 27th), a cover from the same correspondence with a pair of the same 1d. deep blue, very fine                | £20 | 6 |
| 721 | ⊗ | 1858 (Dec. 27th) cover to Bristol bearing 6d. pale rose-red, very fine, flap missing                                   | £35 | 6 |
| 722 | ⊗ | 1859 (Mar. 21st) cover to Trinidad bearing a single 1d. blue, imperforate, fine  | £10 |   |
| 723 | ⊗ | 1860 (Jan. 27th) cover to London with 6d. deep rose-red, large irregular margins, flap missing and a little soiled     | £30 | 6 |
| 724 | ⊗ | 1860 (Feb. 27th) cover to St. Lucia bearing two pairs of the imperforate ½d. yellow-green, full margins and very rare  | £50 | 6 |
| 725 | ⊗ | 1861 (June 25th) cover to London with 6d. deep rose-red, very fine   | £50 | 6 |
| 726 | ⊗ | 1864 (Jan. 9th) envelope to London bearing 1/- black, superb   | £16 | 6 |



721                      720                      723                      725                      724                      726





# 1861-70 NO WATERMARK



741

747



742

744

743

Lot No.	Description	Valuation	Photo Page
<b>1861-70 ROUGH PERFORATION—continued</b>			
	29 Nov. 1962	11.15 a.m.	
743 ★	4d. dull brown-red, fresh block, centred to right	£25	8
744 ★	4d. lake-rose, a brilliant corner block	£45	8
745 ★	4d. dull vermilion, a fresh block. Very rare	£70	9
746 ★	— A marginal block, centred high and slightly creased	£45	9
747 ★	6d. rose-red, fine and well centred, faint gum stains	£25	8
748 ★	6d. orange-red, 6d. bright orange-vermilion and 6d. dull orange-vermilion, two with much gum. Cat. £35	£25	
749 ★	6d. bright orange-vermilion, a brilliant fresh block (3×4)	£45	7
750 ★	— A very similar block (2×3), wonderful centering	£26	9
751 ★	6d. orange, extremely fresh block	£24	9
752 ★	— And 1/- black, each in a fine horizontal pair. Cat. £25	£11	
753 ★	1/- black, a brilliant block (5×4)	£60	7
754 ★	— A fine block, very fresh	£12	7
755 ★	— Another block, rather darker colour	£9	
<i>Imperforate varieties</i>			
756 ★	4d. dull vermilion, a fine pair, much original gum	£60	9
757 ★	— A similar pair, not as fine with crease	£40	9
758 ★	6d. dull orange-vermilion, a marginal block (4×3) without gum	£50	9
<i>Used</i>			
759 ○	1d. blue, 1d. deep blue, bisected diagonally on small piece, 4d. dull rose-red, 4d. dull vermilion, 6d. orange-red and 6d. bright orange-vermilion	£18	
<i>Covers arranged chronologically</i>			
760	1863 (Apr. 25th) cover to London bearing 4d. dull rose-red, a strip, a little stained in one place, very rare	£30	10
761	1866 (Dec. 11th) cover to Philadelphia with 1d. blue, three singles and a pair. Attractive	£20	9
762	1866 (Dec. 27th) cover to Barranquilla, similarly franked, a little tatty and climatically affected	£18	

THE "BURRUS" BARBADOS



757

756



750

758



766

768



761



745

746

751

ENVOYEZ VOS MISES PAR ECRIT ou PAR UN COUP DE TELEPHONE  
Notre correspondente continentale les traduira

THE "BURRUS" BARBADOS



760

765



771

781



Ex 782



Ex 789

790

791



776

Ex 773

777

778

775

779

## THE "BURRUS" BARBADOS

Lot No.	Description	Valuation	Photo Page
1861-70 ROUGH PERFORATION—continued		29 Nov. 1962	11.20 a.m.
<i>Covers illustrating various rates</i>			
763	☒ Four covers bearing 1d.; 1d. and 4d.; 6d.; and 1/-; to London, United States, Halifax and Trinidad	£30	
764	☒ Three covers bearing 1d. and 6d. (2, one rose-red, the other orange-vermilion), the first a circular to Nova Scotia, one to England and the other to Trinidad	£25	
765	☒ 1869 (April 9th) cover to Philadelphia bearing 1d. blue and 4d. dull vermilion, attractive 5d. rate	£30	10
766	☒ 1870 (Jan. 25th) cover to New York with 4d. dull rose-red and 6d. bright orange-vermilion, 10d. rate	£18	9
767	☒ 1871 (July) cover to Antigua with a strip of 1d. blues cancelled "10", straight edge at right, flap missing	£10	
768	☒ 1872 (Feb. 12th) cover to England with 4d. dull vermilion and 1/- black, flap missing	£25	9

### 1870-74 ISSUES

769	○ 1870 Large Star 1d. blue (2, one on blue paper), 4d. and 1/-; 1871 Small Star 1d. and 1/-; 1872 Small Star clean-cut perf. 1d. and 6d. and compound perf. ½d. and 4d.; 1873 ½d., 4d., 6d. and 1/- and 1873 5/-, fair to fine (15 stamps)	£25	
770	Two complete sheets of watermarked paper, one Large Star and the other Small Star	£25	

### WATERMARK LARGE STAR

#### *Mint*

771	★田 <i>Rough perf. 14 to 16:</i> ½d. green, a fresh block, six small fox marks	£30	10
772	★ — Ditto, fresh, a little off centre	£5	
773	★ — Ditto, and ½d. yellow-green, fine, a little off centre	£20	10
774	★ — Ditto, and clean-cut perf. ½d. green, the first with straight edge, the last unused	£8	
775	★ — 1d. blue, a good unused PAIR of this rarity	£70	10
776	★ — Ditto, a very fresh example, only a little off centre	£50	10
777	★ — 4d. dull vermilion, fresh and well centred	£35	10
778	★ — 6d. orange-vermilion, brilliant and nicely centred	£20	10
779	★ — 1/- black, a marvellous unused "large margined" example	£12	10
780	★田 <i>Clean-cut perf. 14½ to 15½:</i> 1/- black, a pristine marginal block (4×3), centred high	£55	12
781	★田 — Ditto, a fine block	£18	10
782	★田 <i>Perf. 14:</i> ½d. deep green and 1d. deep blue, each in a brilliant block of four	£25	10

#### *Used*

783	○ <i>Rough perf. 14 to 16:</i> 4d. dull vermilion, two fine shades, one cancelled "10"	£5	
784	☒ — 1/- black, hinged on 1874 cover to London	£7	

#### *Imperforate varieties: mint*

785	★ 6d. orange-vermilion, a fine horizontal pair	£12	
786	★ — A similar pair	£8	
787	★ — A similar pair, slight thins	£5	
788	★ 1/- black, fine unused, also 4d. with an imperforate margin on three sides	?	

#### *Imperforate varieties: used*

789	○ 6d. orange-vermilion and 1/- black, clear to very large margins	?	10
790	○ 1/- black with good to very large margins showing part of adjacent stamp at left	?	10
791	○ — A rather smaller example, dated cancellation	?	10



792

795

796

797

804

780



799

794



Ex 803



800

801

802

805



807

808

809

## THE "BURRUS" BARBADOS

Lot No.	Description	Valuation	Photo Page
---------	-------------	-----------	------------

29 Nov. 1962    11.28 a.m.

### WATERMARK SMALL STAR

#### Mint

792	★	Rough perf. 14 to 16: 1d. blue, unused with a curious diagonal roulette on two sides	?	12
793	★	— Ditto, and clean-cut perf. 14½ to 15½ 1d. blue and 1/- black, two with nearly full gum. Cat. £32	£10	
794	★	⊠ Clean-cut perf. 14½ to 15½: 1/- black, a superb block, centred to left	£35	12
795	★	— 6d. orange-vermilion, fresh, centred high	£20	12
796	★	Perf. 11 to 13 × 14½ to 15½: 4d. dull vermilion, very fine, centred a little high	£16	12
797	★	Perf. 14: 3d. brown-purple, fresh, some original gum	£20	12
798	★	— Ditto, ¾d. deep green (2, shades) and 1d. blue (2), fine	£12	
799	⊠	Perf. 15½ × 15: 5/- plate proof in black, a fine corner block	£40	12
800	★	— 5/- dull rose, superb and well-centred	£50	12
801	★	— Ditto, very fine	£45	12
802	★	— Ditto, only a trifle off centre	£40	12

#### Used

803	⊠	Rough perf. 14 to 16: 6d. orange-vermilion and 1/- black, each in a block of four, the first dated, the last with small crease along top	£35	12
804	○	— 1/- black, variety "imperforate"	?	12
805	○	Perf. 15½ × 15: 5/- dull rose, very faint, insignificant vertical crease	£30	12
806	○	— Ditto, lightly cancelled, rather faded, centred low	£15	

#### Covers

807	⊠	1872 (July 11th) registered front and part back of cover to London bearing rough perf. 4d. and 1/- with dated cancel. Most attractive	£35	12
808	⊠	1873 (March 29th) cover to Philadelphia with rough perf. 4d. and clean-cut 1d. and with attractive dated cancel	£30	12
809	⊠	1875 (May) front to Halifax bearing rough perf. 4d. and clean-cut perf. 6d. orange-vermilion, an attractive combination	£35	12
810	⊠	1873 (Apr. 16th) cover to Demerary bearing clean-cut perf. 6d., fine	£15	
811	★	The remainder of the Perkins Bacon Britannias with 1852-55 ¾d. deep green and 1d. (2); 1858 1/-; 1860 pin-perf. 14 ¾d.; 1861 ¾d.; 1861-70 ¾d. grass-green (a pair and four singles), 1d. blue (5) and 4d. (4, with an "imperforate"); 1870 ¾d.; 1873 3d. and 1874 ¾d. (3) and 1d. (3), good to fine, many with gum (32 stamps)	£20	

### 1875-78 DE LA RUE PRINTINGS

#### Mint

812	★	Perf. 12½: 6d. bright aniline-yellow, fine and well-centred, slight crease	£35	13
813	★	— Ditto, well-centred, a little original gum	£25	13
814	★	— 1/- aniline-violet, brilliant	£25	13
815	★	— Ditto, fine, a little off centre	£15	13



812

813

814

815

826

827

**ATTRACTIVE PRIVATE TREATY PROPERTIES ARE  
ALWAYS AVAILABLE — SEND FOR CURRENT BROCHURE**



818

821

Lot No.	Description	Valuation	Photo Page
	29 Nov. 1962	11.34 n.m.	
816	★ Perf. 14: ½d. (a block of four and a single), 1d. (2. shades), 3d., 4d. carmine, 4d. red (thin spot) and 6d. yellow. Cat. £53	£17	
817	★田 — ½d. bright green and 1d. blue, three distinctive shades, each in a mint block of four. Cat. £47	£25	
818	★田 — 3d. mauve-lilac, a fresh block (3×2)	£40	14
819	★ — Ditto, 4d. red, 6d. chrome-yellow and 6d. yellow, fine. Cat. £36	£14	
820	★田 — 4d. carmine, a fresh block	£32	14
821	★田 — 4d. crimson-lake, superb block	£60	14
822	★ — 4d. crimson-lake and 1/- purple, some original gum	£10	
823	★田 — 6d. chrome-yellow, a superb block	£25	14
824	★田 — 1/- purple, a very fine block	£25	14
825	★田 — Ditto, a rather similar block	£25	14
826	★ — Ditto, superb	£8	13
827	★ — 1/- dull mauve, very fine	£15	13

*Used*

828	○ Perf. 12½ ½d., 4d. (2), 6d. (2) and 1/- and perf. 14 ½d. (4), 1d. (9, one cancelled "A 07"), 3d. (2), 4d. (2), 6d. (3) and 1/- (4), selected shades, fine. Cat. £45 (30 stamps)	£15	
-----	---	-----	--

*Covers*

829	☒ Perf. 14 1d. (2); 1d. and 4d.; and 4d.; used on three separate covers, the first to France, the last two to U.S.A., fine	£15	
830	☒ — 3d. mauve-lilac, a pair and a single used on 1878 cover to Philadelphia, one stamp with ink mark, flap missing. Attractive	£12	
831	☒ — 6d. chrome-yellow and 1/- aniline-violet, each in a pair used on separate 1879 covers from the same correspondence to London	£25	
832	☒ — Ditto, a pair, and 1/- purple used on 1881 cover to London and 4d. crimson-lake used on 1882 cover to Fiume, fine	£20	



820

823

824

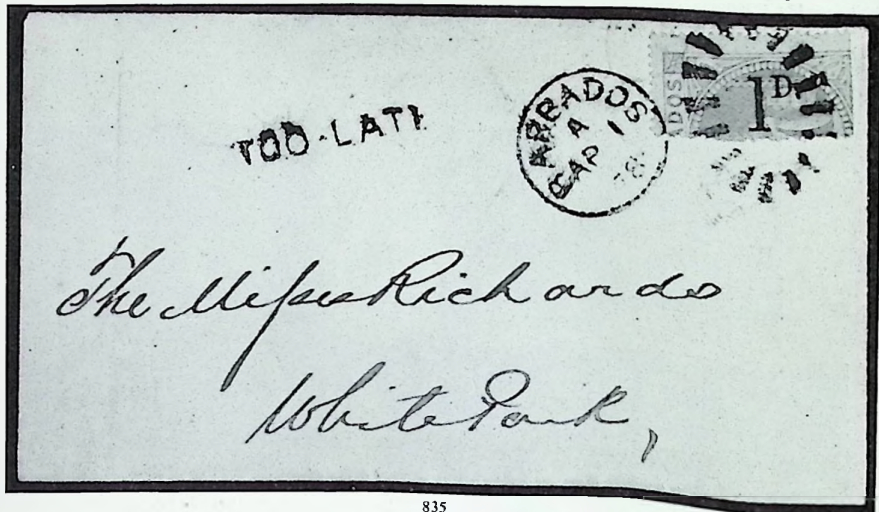
825

*The "ENCYCLOPAEDIA OF EMPIRE POSTAGE STAMPS" is the vade mecum for all specialists and general collectors*

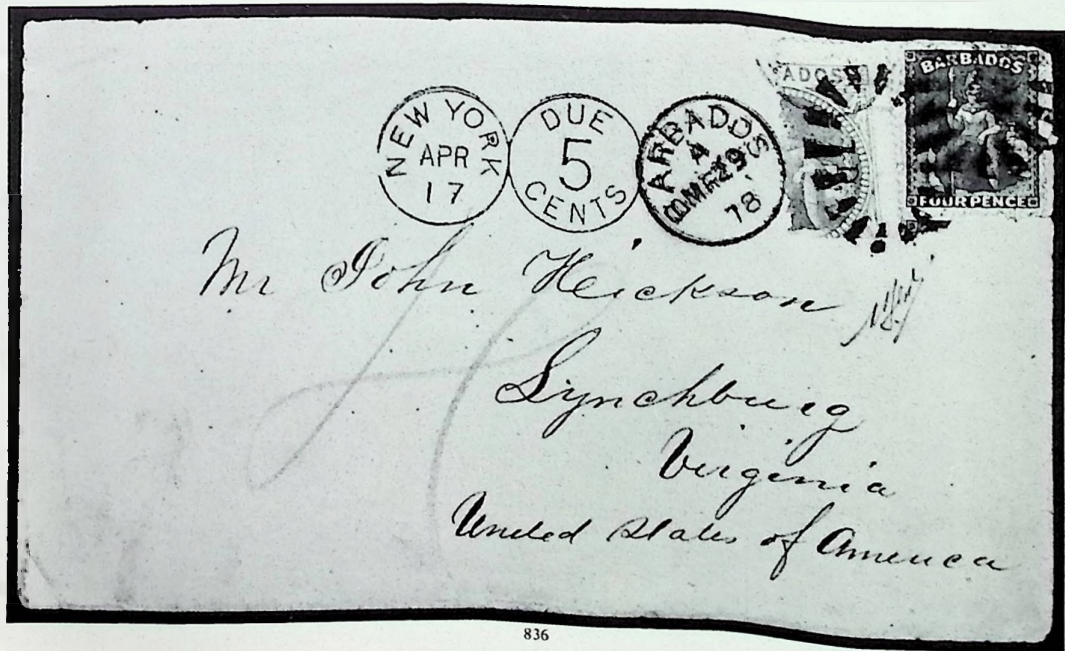


THE "BURRUS" BARBADOS

Lot No.	Description	29 Nov. 1962	11.37 a.m.	Valuation	Photo Page
<b>1878 PROVISIONALS</b>					
833	○ Numeral 7 mm. high, curved serif: "1D." on half 5/- dull rose, the right hand half, very fine			£30	16
834	○ — Ditto, an unsevered PAIR, superb			£80	16
835	☒ Numeral 7 mm. high, straight serif: "1D." on 5/- dull rose, the right hand half superb used on 1878 Too Late local COVER			£250	15
836	☒ — Ditto, a similar half fine used with 1878 4d. red on 1878 COVER to the U.S.A., with enclosure, flap torn away			£250	15



835



836

## THE "BURRUS" BARBADOS

Lot No.	Description	Valuation	Photo Page
	1878 PROVISIONALS—continued	29 Nov. 1962	11.38 a.m.
837 ★	The mint remainder with 1861 clean-cut perf. ½d.; 1861-70 rough perf. ½d. deep green, ½d. green (4), ½d. grass-green, 1d. blue, 1d. deep blue, 4d. dull rose-red and 4d. dull vermilion; 1870 wmk. Large Star rough perf. ½d. green; 1873 wmk. Large Star ½d.; 1873 wmk. Small Star 3d.; 1874 wmk. Large Star ½d. (2) and 1d. (2); 1875-78 perf. 12½ ½d. and perf. 14 ½d. (3), 1d. (2) and 3d.; mainly fine. Cat. £132 (24 stamps)	£20	
838 ○	The used remainder with 1852-55 1d. (2) and 4d. (2); 1855-57 ½d. and 1d. (5); 1858 6d. (3); 1869 pin-perf. ½d. and 1d.; 1861-70 ½d., 6d. and 1/-; 1870 1d. and 6d.; 1871 ½d. (2), 4d. and 1/-; 1873 3d.; 1874 ½d. and 1d. and 1875-78 perf. 12½ ½d., 4d., 6d. and 1/- (2) and perf. 14 ½d. (3), 1d. (4), 3d., 4d., 6d. (2) and 1/- (2), mainly good to fine	£35	



833

834



843

844

845



Ex 839

### LATER ISSUES

839 ★	1882-86 ½d. to 5/- complete, one shade of each value (4d. brown), in superb mint blocks of four. Cat. £72 (40 stamps)	£45	16
840 ★	— ½d. (2), 1d. (2), 2½d. (2), 3d. (7), 4d. grey, 4d. brown (2), 6d. (4), 1/- (3) and 5/- and 1892 ½d. on 4d., block of sixty, three pairs and seven singles, showing varieties. Cat. £51 (97 stamps)	£16	
841 ☒	— 1d. (4), 2½d. (2), 3d., 4d. grey, 4d. brown and 5/-; 1892 ½d. on 4d. (4) used, ½d. on 1d. envelope, used on seven covers, three registered (15 stamps)	£16	
842 ○	— ½d., 1d., 2½d., 4d. grey (2), 4d. brown and 1/-; 1892-99 to 6d.; 1897-98 ½d., 1d. (2), 2½d. and 10d.; 1903 2/6; 1906 to 2½d. and later to 1920 with 1916-20 2/- pair and including four covers. Cat. £34 (54 stamps)	£7	
843 ★	1892 HALF-PENNY on 4d. deep brown, variety DOUBLE SURCHARGE in black, a trifle soiled yet with much original gum	?	16
844 ★	— Variety TREBLE SURCHARGE, two in red, one in black, superb mint	£40	16
845 ★	— Variety DOUBLE SURCHARGE, one in red, one in black, superb mint	£100	16
846 ★	1892-93 ½d. to 2/6 with 1d., 2½d., 5d. (2), 6d. (2), 8d. (2) and 10d. (3) additional shades; 1897-98 ½d. to 2/6 with additional 5d.; 1903 2/6; 1904-05 ½d. to 2/6 with additional 1d. and 8d.; 1906 1d.; 1907 1d. on 2d. (2, one inverted); 1906 Nelson ½d., 2d. (2), 2½d., 6d. (2) and 1/-; 1907 ½d., 2d. and 2½d. and 1909-10 ½d., 1d., 2d. (2) to 1/-, mint. Cat. £60 (62 stamps)	£22	
847 ★	— ½d. to 2/6 and 1903 2/6, each in a mint block of four. Cat. 734/- (28 stamps)	£22	
848 ★	1897-98 Jubilee, white paper ½d. to 2/6 complete in mint blocks of four. Cat. 910/- (36 stamps)	£36	
849 ★	— Blue paper ½d., ½d. (block of four), 2½d., 5d., 8d. and 2/6, fine mint. Cat. 705/- (9 stamps)	£20	

THE "BURRUS" COLLECTION

Lot No.	Description	Valuation	Photo Page
	BARBADOS: LATER ISSUES—continued		
	29 Nov. 1962 11.42 a.m.		
850	★田 1904-05 ½d. to 1d., 6d. and 8d. (2) and 1909-10 ½d., 1d. to 6d. (2) and 1/-, each in a mint block of four. Cat. £48 (52 stamps)	£24	
851	★田 1906 Nelson ½d. to 1/-; 1906 1d.; 1907 Relief Fund 1d. on 2d., two blocks of four, one inverted and a block of six, and 1907 ½d., 2d. and 2½d., each in a mint block of four. Cat. 870/- (58 stamps)	£30	
852	★田 1912 ½d. to 3/-, one shade of each, each in a mint block of four. Cat. £52 (44 stamps)	£30	
853	★ — ½d. to 1d., 2½d. to 4d. (2), 6d. to 3/-; 1916-20 ½d. (2), ½d. (2), 1d. (2), 2d. (2), 2½d. (2), 3d. (2), 4d. (2), 6d. (2), 1/- (2), 2/- (2) and 3/- (2); 1917-1d. and 1918 4d. (2) and 3/-, mint shades. Cat. £40 (37 stamps)	£18	
854	★田 1916-20 ½d. to 3d. (2), 4d. (2) to 3/- and 1918 4d. and 3/-, each in a mint block of four. Cat. £69 (60 stamps)	£38	
855	★田 — 3/- deep violet, a corner mint block	£17	
856	★田 1920 Victory ½d. to 3/- with both watermarks of the 1d., each in a mint block of four. Cat. 633/- (48 stamps)	£15	
857	★田 1921-24 wmk. mult. CA 3d., 4d. and 1/- and wmk. Script ½d. to 2½d., 6d. to 3/-, each in a mint block of four. Cat. 690/- (48 stamps)	£14	
858	★ 1920 Victory ½d. to 3/- with both 1d. and 1921-24 ½d. to 3/-, the 3d. and 4d. wmk. MCA, mint. Cat. £18 (27 stamps)	£7	
859	★ 1925-35 values to 3/- in singles and blocks of four; 1927 1d. (5); 1935 Jubilees, five sets; 1937 Coronations, five sets; 1938-47 to 2/6 in singles and blocks of four and 1939 Tercentenary, five sets, mint. Cat. 915/- (160 stamps)	£10	

Cayman Islands

Mint

860	★田 1901 ½d. and 1d.; 1901-02 wmk. Crown CA ½d. to 1/- and 1905-06 wmk. Multi. Crown CA ½d. to 1/-, each in a block of four. Cat. £53 (48 stamps)	£32	
861	★ — A similar lot but in singles (12 stamps)	£6	
862	★田 1907 4d. to 5/- complete in blocks of four (16 stamps)	£60	17
863	★ — A similar lot but in singles (4 stamps)	£10	
864	★田 1907 "One Halfpenny" on 1d. carmine, a corner plate number block (3×2)	£20	18
865	★田 — "½D" on 5/- salmon and green, superb block	£75	17
866	★ — Ditto, a fine single	£7	
867	★田 — "1D" on 5/- salmon and green, superb corner plate number block	£75	17
868	★ — Ditto, a fine single	£7	
869	★ 1908 "2½D" on 4d. brown and blue, fine	£45	18



Ex 862

865



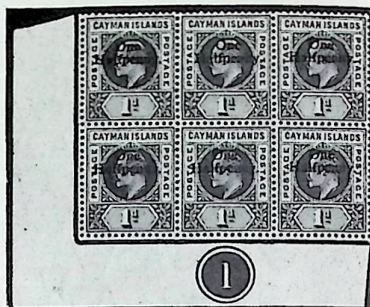
867

# THE "BURRUS" CAYMAN ISLANDS



Ex 870

872



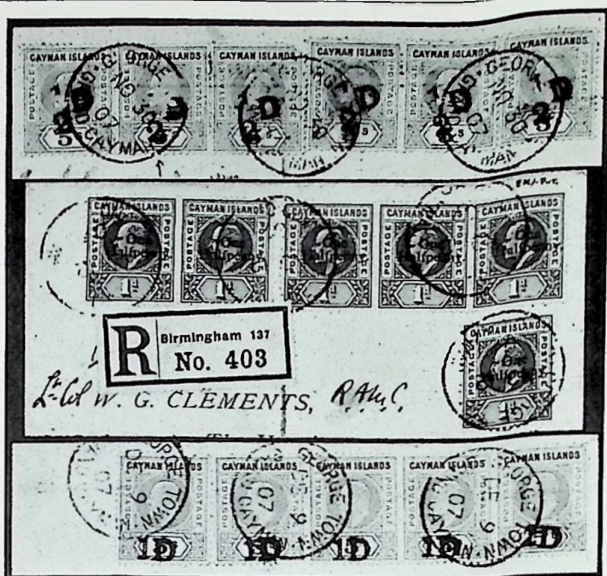
864



869

Lot No.	Description	Valuation	Photo Page
	29 Nov. 1962 11.47 a.m.		
870 ★田	1907-09 ½d. to 10/- complete with both 1/-, each in a superb block of four	£60	18
871 ★	— A similar lot but in singles	£9	
872 ★田	— "1d" on 4d. black and red on yellow, the revenue stamp, a marginal block	£32	18
873 ★田	— Ditto, a similar block, gutter marginal	£30	
874 ★	— Ditto, a fine single	£6	
875 ★田	1908 ¼d. and 1912-20 ¼d. to 3d. (2), 4d. to 1/- (2, one with white back), 2/- to 10/- (2, one with white back), each in a block of four. Cat. £61 (68 stamps)	£30	
876 ★	— A similar lot in singles (17 stamps)	£6	
877 ★田	1921-26 wmk. Mult. Crown CA 3d. to 10/- and wmk. Script CA ¼d. to 10/-, a shade of each value, each in a block of four. Cat. £39 (76 stamps)	£28	
878 ★	— A similar lot in singles (19 stamps)	£7	
879 ★田	1932 Centenary complete in corner blocks of four (48 stamps)	£65	
880 ★	— A similar set in singles (12 stamps)	£15	
881 ★田	1935 ¼d. to 10/- complete in corner blocks of four (48 stamps)	£22	
882 ★	— A similar set in singles (12 stamps)	£5	
883 ★田	1938-47 ¼d. to 10/-, all in blocks of four. Cat. 278/- (48 stamps)	£5	
884	The remainder from 1901 with 1907-09 5/- pair; 1917-20 War stamps (30); 1912-20 4d. and 5/- (used on cover); 1921-28 to 4d.; 1935 Jubilees to 1/- (9) and later to 10/-, mostly mint. Cat. 546/- (99 stamps)	£8	
<b>Covers</b>			
885 △	1901 Q.V. ½d. and 1d. pairs and 1d. single and 1901-02 K.E. Crown CA ¼d., 2½d., 6d. and 1/- used together on 1904 registered front to London	£7	
886 ☒	1901-02 wmk. Mult. CA ¼d. to 1/-, the set used on 1904 registered cover to London	£8	
887 ☒	1905-06 wmk. Mult. CA ¼d., 2½d., 6d. and 1/- used on 1909 registered cover to Budapest, and 1907 registered cover to the U.S.A. bearing two 1/- violet and green	£8	
888 ☒	1907 6d. olive and rose and 1/- violet and green. two examples of each used on registered cover to the U.S.A., and 1907 6d. used on local 1913 cover	£10	
889 ☒	— 5/- salmon and green, fine used on registered cover to the U.S.A.	£20	

THE "BURRUS" COLLECTION



891  
890  
892

Lot No.	Description	Valuation	Photo Page
	CAYMAN ISLANDS—continued	29 Nov. 1962	11.52 a.m.
890	☒ 1907 One Halfpenny on 1d., six examples used on registered cover to Christchurch, England	£18	19
891	☒ — "1/2D" on 5/- salmon and green, two strips of three used together on 1907 registered COVER to London, one with "1" practically missing, one with corner fault	£120	19
892	☒ — "1D" on 5/- salmon and green, a strip of four and a single used on COVER to Boston, Mass.	£100	19
893	☒ 1908 "2 1/2D" on 4d. brown and blue, a forged surcharge genuinely used on 1910 registered cover with 1907-09 2 1/2d.	?	

## Tobago

### Mint

894	★ 1879 wmk. Crown CC 1d. rose (some original gum). 3d. blue, 6d. orange unused and 1/- green, some original gum. Cat. 550/-	£15	
895	★☒ — Ditto, a marginal block, fresh, some original gum	£5	
896	★☒ — 6d. orange, a brilliant marginal block (3×4), faint fox marks in places	£25	
897	★ — 5/- slate, brilliant	£26	20
898	★ — Ditto, some original gum, tiny thin spot	£16	20
899	★ — £1 mauve, very fine, centred a trifle low	£275	20
900	★ — Ditto, nearly as fine, faintly foxed	£225	20
901	★ 1880 "1d." on half 6d. orange, especially fine	£30	20
902	★☒ 1880 wmk. Crown CC 1/2d. purple-brown and 1d. Venetian red, each in a superb block of four	£11	
903	★☒ — 4d. yellow-green, a superb block of four	£30	20
904	★ — Ditto, a fresh single	£5	
905	★☒ 1883 "2 1/2 PENCE" on 6d. stone, a superb block of four	£5	
906	★ 1882-84 wmk. Crown CA 4d. yellow-green, fine	£9	20
907	★ — 6d. stone, some original gum	£30	20

THE "BURRUS" COLLECTION



897	898		901	906
899	900	903	907	911

Lot No.	Description	Valuation	Photo Page
TOBAGO—continued			
	29 Nov. 1962 11.54 a.m.		
908 ★	1885-94 wmk. Crown CA ½d. to 1/-; 1886-89 ½d. on 2½d., ½d. on 6d. (2) and 1d. on 2½d. (stained block of eight) showing figure further from word varieties; 1891-92 ½d. on 4d. (stained) and 1896 1/-, each in a block of four. Cat. 493/- (48 stamps)	£12	
909 ★	1891-92 "½ PENNY" on 4d. grey, a corner control block (3×2), a little toned	£10	
910 ★	"2½ PENCE" on 4d. grey, a fresh block (4×3)	£8	
911 ★	The 1879 £1 mauve on watermarked CA paper, a fiscal stamp, some original gum	£15	20
912	The remainder with 1880 wmk. CC ½d., 1d., 4d. (used) and 1/-; 1883 2½d. on 6d.; 1882-84 wmk. CA ½d. (2), 1d. (5, with a block of four) and 2½d. (3, one used); 1885-94 ½d. (3, one used on cover with 4d. grey), 1d. (2, one used), 4d. (2), 6d. (4, one used), 1/- (2, one used); 1886-89 ½d. on 2½d., ½d. on 6d. stone (2), ½d. on 6d. orange-brown and 1d. on 2½d.; 1891-92 2½d. on 4d. (3) and ½d. on 4d. and 1879 wmk. CA 5/-, unused or with some original gum (42 stamps)	£7	

Used

913 ○	1889 "½ PENNY" on 6d. orange-brown, a very fine corner plate number block (3×2)	£7
-------	---	----



"2½" on 6d. black  
IMPERFORATE BETWEEN.

FOR SALE INTACT

Lot  
No.

Description

29 Nov. 1962

11.56 a.m.

Valuation

Photo  
Page

# Turks Islands

914 The magnificent collection, offered intact, with rarities from the Ferrari and Snowden collections, mainly unused but with some beautiful covers.

★ *The unused* include blocks of four of the 1867 6d. and 1/- and three examples of the rare 1873 1/- lilac, one exceptionally fine.

The 1881 "½" provisionals include a reconstruction (15) of setting II on the 6d. black with a block of eight, a sheet (30) of the same setting on the 1/- blue (completed with two singles), a complete sheet (30) of setting VII on the 1/- lilac, a similar sheet of setting VIII on the 1d. red, a part reconstruction (14) of setting X on the 1d. red and a block of nine of the same setting on the 1/- lilac; also a complete sheet of setting XI on the 1d. red.

The "2½" provisionals include a pair of setting II on the 6d. black, IMPERFORATE BETWEEN, ex-Ferrari and of the greatest rarity; a corner block (5×3) of setting V on the 1/- lilac, an example of the rare setting VII on the 6d. black, a block (4×3) of setting VIII on the 1/- lilac, and two types of the rare setting XI on the 1/- blue.

The "4" provisionals include a marvellous strip of five of the rare setting I on the 6d. black, ex-Ferrari, and a block of nine on the 1/- lilac, which includes one example of the rarer type.

The later issues include a pane of sixty of the 1889 1d. on 2½d. red-brown and other multiples.

○ *The used* include three examples of the rare 1873 1/- lilac, one exceptionally fine.

☒ *The thirteen covers* include 1872 with a fair 1/- blue; 1873 with a strip of four 1867 1d. rose; 1879 with two 6d. black; 1882 with the 4d. blue and 1/- slate-green; two 1893 with the scarce ¼d. on 4d. grey; 1895 with the "4" on 6d. black and "¼" on 1/- blue, and 1897 with 6d. yellow-brown (20) and 1/- sepia (9).

(628 stamps) £5,500



"2½" on 1/- lilac.  
Half sheet of Setting V.



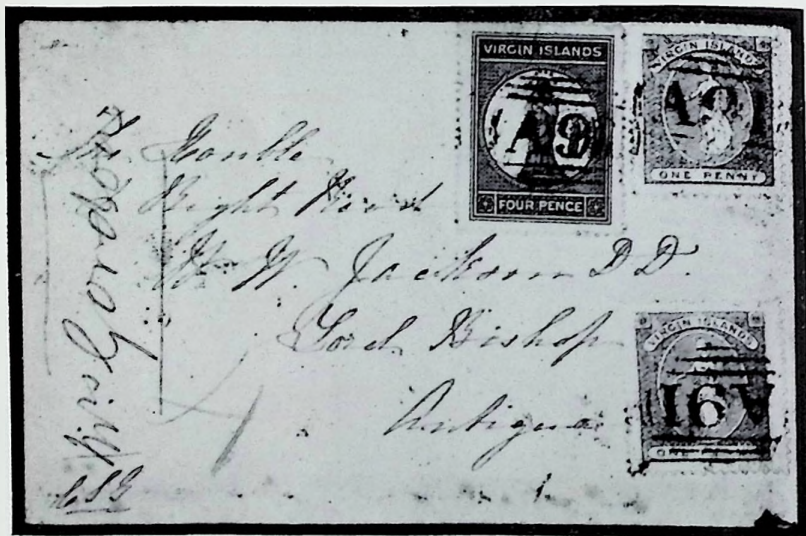
"4" on 1/- lilac,  
Setting III.



"4" on 6d. black, Setting I.

## Turks and Caicos Islands

Lot No.	Description	Valuation	Photo Page
	29 Nov. 1962 11.57 a.m.		
915 ★田	1900 ½d. to 3/- and 1905-08 ½d. to 3d., each in a mint block of four. Cat. 870/- (48 stamps)	£32	
916 ★	— A similar lot in singles (12 stamps)	£6	
917 田	— 2d. block of six, 2½d. block of nine, 4d. and 6d. in blocks of four and 3/- used on separate covers, the last registered (24 stamps)	£15	
918 ★	1909 ½d. to 2d. (2), 2½d. (2), 3d. (2) to 6d. (2), 1/- to 3/-; 1910 ½d. (both); 1913-18 ½d. to 3/-; War stamps (16); 1921 ½d. to 1/-; 1922-26 ½d. to 3/-; 1928 ½d. to 10/-; 1935 Jubilees and 1938 to 10/-, mint. Cat. 569/- (95 stamps)	£11	
919 ★田	— ½d. to 3/- and 1910 ½d. (both), each in a mint block of four. Cat. 433/- (48 stamps)	£12	
920 田	— 2½d. and 4d. in blocks of twelve; 1922-26 3/- and 1928 1d. and 1½d. in strips of six and 1/- used on six covers (38 stamps)	£15	
921 ★田	1913-18 ½d. to 2/-; War stamps (12); 1921 Script to 1/- and 1935 Jubilees, each in a mint block of four. Cat. 570/- (136 stamps)	£15	
922 ★田	1922-26 ½d. to 2/- (2) and MCA 2/- and 3/- (2, one stamp with small tear), each in a mint block of four. Cat. 454/- (64 stamps)	£10	
923 ★田	1928 ½d. to 10/- complete in mint blocks of four (44 stamps)	£18	
924 ★田	1937 Coronations and 1938 ½d. to 10/- in mint blocks of four (60 stamps)	£5	



Rare and colourful cover to Antigua.





## FOR SALE INTACT

Lot  
No.

Description

29 Nov. 1962

12.01 p.m.

Valuation

Photo  
Page

### Virgin Islands

925 The very fine collection, offered intact, mainly unsued but with some beautiful covers.

- ★ *The unused* include 1866 1d. deep green, a marginal block of fifteen on white paper and a complete sheet (25) of the 6d. rose-red on toned, the large "v" variety on this stamp being included.

The 1867-68 issues include three examples of the scarce 6d. pale rose and one of the 1/- on blued paper; there are complete sheets of the 4d. lake-brown on buff paper and of the 1/- black and crimson with coloured margins, and there are two examples of the last stamp on blued paper.

There are complete sheets of the 1879 lithographed 1d. green (variety watermark upright); of the 1887-89 1d. rose-red, 4d. brown-red, 6d. deep violet and 1/- brown, and of the 1888 "4D" on 1/-, the last being severed across its centre and rejoined.

The 1880-84 Victorian keyplate issues and those of King Edward VII, King George V and King George VI (1938 to 5/-) are mostly represented in singles and blocks of four.

- ☒ *The fifteen covers* include 1878 to Antigua with the 1d. green (2) and 4d. lake-red, very fine; 1880 with two 4d. lake-red; 1888 with the "4D" on 1/- provisional and 1904 with 1899 4d. brown, the "PENCF" error and the two errors on the ½d. green. (786 stamps)

£1,750

1879 Lithographed 1d. green, variety watermark upright.



Further illustrations on page 24.

THE "BURRUS" VIRGIN ISLANDS

*Two of the  
complete  
sheets  
of  
the classic  
stamps  
of the  
Virgin Islands  
included in  
the collection*



*formed by  
Maurice Burrus  
and now  
offered for sale  
intact*

*See lot 925  
for descriptions  
and further  
illustrations of  
this remarkably  
fine collection*

THE "BURRUS" COLLECTION

Second Session at 12.15 p.m.

*Africa*

ASCENSION

- |     |   |   |   |     |
|-----|---|---|---|-----|
| 926 | ★ | 田 | 1922 ½d. to 3/- complete in mint blocks of four. Cat. 872/- (36 stamps)   | £28 |
| 927 | ★ | — | A similar set in singles  | £5  |
| 928 | ★ | 田 | 1924-33 ½d. to 3/-, only one 1d., complete in mint blocks of four. Cat. 904/- (48 stamps)   | £20 |
| 929 | ★ | — | A similar set in singles  | £5  |
| 930 | ★ | 田 | 1934 ½d. to 5/- complete in mint blocks of four. Cat. £14 (40 stamps)   | £6  |
| 931 | ★ | 田 | 1935 Jubilees complete in mint blocks of four. Cat. 374/-   | £9  |
| 932 | ★ | 田 | 1938 ½d. to 10/- complete in mint blocks of four. Cat. 439/- (40 stamps)  | £10 |
| 933 |   |   | The remainder with 1924 1/- used on cover; 1934 ½d. to 5/-; 1935 Jubilees and 1937 Coronations (blocks of four and singles). Cat. 308/- (40 stamps) | £7  |

BASUTOLAND

- |     |   |   |   |     |
|-----|---|---|---|-----|
| 934 | ★ | 田 | 1933 ½d. to 10/- complete in mint blocks of four. Cat. 588/- (40 stamps)  | £14 |
| 935 | ★ | — | ½d. to 10/-; 1935 Jubilees; 1937 Coronations and 1938 ½d. to 10/- complete mint. Cat. 195/- (28 stamps)                                   | £5  |
| 936 | ★ | 田 | 1935 Jubilees; 1937 Coronations; 1938 ½d. to 10/- and 1933 1d. and 2d. Postage Dues, each in a mint block of four. Cat. 202/- (80 stamps) | £6  |



Ex 937

Ex 937



938

939

- |     |   |   |  |      |    |
|-----|---|---|--|------|----|
| 937 | △ |   | OFFICIAL STAMPS: 1934 overprinted "OFFICIAL" ½d. emerald, 2d. bright purple and 6d. orange-yellow used on part O.H.M.S. front and 1d. scarlet used on O.H.M.S. front, both to Lagos and dated 9th April 1934 | £250 | 25 |
| 938 | ○ | — | Ditto, 2d. mauve, very fine  | £30  | 25 |
| 939 | ○ | — | Ditto, 6d. orange-yellow, very fine  | £20  | 25 |

# THE "BURRUS" COLLECTION

Lot  
No.

Description

29 Nov. 1962 12.18 p.m.

Valuation

Photo  
Page

## BECHUANALAND

### *British Bechuanaland*

940 ★ 1885-86 wmk. CA ¼d. slate (a block of four) and wmk. Anchor 6d. purple (a block of four) and 1/- green, fine mint £12



Ex 941

946

947



952

941	Ⓟ	1887 Unappropriated dies: 1d., 3d. to £5 complete, imprimaturs with much original gum, nearly all fine	£50	26
942	★	— 8d. lilac and black, the rare unissued value, fine mint	£20	26
943	★	— 1d. to 10/- complete, very fine mint. Cat. 284/- (10 stamps)	£6	
944	★	— 1/- to 10/- complete, superb mint. Cat. 210/- (5 stamps)	£5	
945	★	— 5/- green and black, a fresh mint block	£10	
946	★	— £1 lilac and black, fresh mint, a few ragged perfs. at right	£14	26
947	★	— £5 lilac and black, fresh mint, a tiny scuff at one corner	£45	26
948	★	1888 surcharges 1d. on 1d., 2d. in red on 2d., 4d. on 4d., 6d. on 6d., 1s. on 1/- and "One/Half/Penny" on 3d., fine mint	£9	
949	★	— 2d. in red on 2d. lilac and black, variety curved "2" in "1", superb mint	£8	26
950	★	— 4d. on 4d. lilac and black, a fresh block	£15	26
951	★	— 1s. on 1/- green and black, a superb mint block	£14	26



942  
943

944



955

956

951

957

958

THE "BURRUS" COLLECTION

Lot No.	Description	29 Nov. 1962	12.21 p.m.	Valuation	Photo Page
<b>Covers</b>					
952	☒ 1888 "2d." in red on 2d. and "6d." on 6d. fine used 1888 cover from Taungs to Leicester			£20	26
953	☒ 1887 ½d. (3) and 2d.; 1887 ½d. (3); 1891-94 1d. (3) and 2d.; 1887 4d. (3); 1891-94 4d. (3) and 1891-94 6d. (3) used on five covers, two registered, from Mafeking (2), Gaberones, Macloutsie and Palachwe and with numeral cancellations, one rather stained, the Macloutsie cover shows "H" in diamond used as a seal			£25	
<b>Bechuanaland Protectorate</b>					
954	★ 1888 3d. on 3d., 4d. in black on 4d., 1/- and 4d. in red on 4d., fresh mint. Cat. 262/-			£6	
955	★ — 2/- green and black, very fine mint			£5	26
956	★ — 2/6 green and black, superb mint			£8	26
957	★ — 5/- green and black, very fresh mint			£10	26
958	★ — 10/- green and black, extremely fine mint			£32	26
959	★田 1914-24 ½d. to 1/- and Bradbury Wilkinson 2/6 and 5/-, each in a mint block of four. Cat. 325/- (44 stamps)			£6	
960	★田 1932 ½d. to 10/- complete in marginal mint blocks of four (48 stamps)			£25	
961	★ — A similar set in singles			£6	
962	★田 1938 ½d. to 10/- complete in corner mint blocks of four (44 stamps)			£4	
963	The remainder with British Bechuanaland 1885-86 to 6d.; 1887 1d. to 10/- unused and used; 1888 ½d. on 3d. and to 1/- and later to 1/-, and Bechuanaland Protectorate 1888 to 6d.; 1889 4d. on ½d.; 1897-1902 to 6d., K.E. to 1/- (5); 1914-24 to 5/-, Jubilees in blocks of four and singles; 1938 ½d. to 10/- and postage dues (18), all unused but twenty-nine (275 stamps)			£28	

SOUTH AFRICA

964	★田 1913-21 ½d. to £1 and 1922 3d., one shade of each value, each in a mint block of four (60 stamps)			£100	27
965	★ — A similar lot in singles (15 stamps)			£20	
966	★ — £1 green and red, superb mint			£16	
967	★ 1926 ½d. to 6d. and 1927-28 2d. to 10/-, each in a mint horizontal pair. Cat. 482/- (20 stamps)			£12	
968	★田 1933-36 Voortrekker ½d. to 3d. and 1935 Jubilees complete in mint blocks of four. Cat. 209/- (32 stamps)			£3	
969	★田 OFFICIAL STAMPS: 1926 ½d. to 6d. in mint blocks of four. Cat. 302/- (16 stamps)			£7	



Ex 964



Ex 964

THE "BURRUS" COLLECTION

Lot No.	Description	Valuation	Photo Page
		29 Nov. 1962 12.26 p.m.	
970	The remainder w <sup>th</sup> 1910 2½d. (8); 1926 4d. (38); 1930-48 to 5/- (block of four) with 1938 2d. blue and violet in a block of four; 1938 Voortrekkers; 1939 Huguenots; official stamps (40) to 2/6 (6); Air stamps with 1925 (two sets) and 1929 4d. and 1/- (six sets), and postage dues (51) with 1914-22 1/-, nearly all mint	£22	

Asia  
BRUNEI



974



975

971	★ 1906 1c. to \$1; 1907 1c. to \$1; 1908-12 1c. to 50c. (3), \$1 and \$5; 1916 5c. and 8c.; 1924-29 values to 12c. and the "bogus" set, all but one mint.		
972	☒ — "FOUR CENTS" on 12c. black on yellow, a fine block (5×4) used on 1908 registered cover	£10	
973	★☐ — 2c. on 3c. and 4c. on 12c.; 1907 1c. to 50c.; 1908-12 1c. to 50c. (2), \$1 and \$5; 1916 5c. and 8c.; 1924-29 1c. to 12c. and 1931 25c. to \$1, all in mint blocks of four, Cat. 1,215/- (172 stamps)	£8	
974	★☐ 1908 \$25 black on red, a marginal mint block	£40	
975	★ — Ditto, a fine mint single	£100	28
		£18	28

NORTH BORNEO

976	★ 1883 2c., 50c. and \$1; 1884 4c. and 8c.; 1886 ½c., 2c. to 10c.; 1886 ½c. overprinted and perf. 14 5c. on 8c.; 1886-87 ½c. to 10c. (two shades of each), ½c. (2), 1c. (3), 2c., 4c. (2), 8c. (2) and 10c. (2) shades in imperforate pairs, 25c. (stained) and 50c. (2, one imperf.); 1888 25c., \$1 and \$2; 1890 8c. on 25c.; 1891-92 6c. on 8c. and 6c. on 10c. (both) and 1892-93 1c. on 4c., 1c. on 5c. and 8c. on 25c., mostly fine unused. Cat. £45 (61 stamps)	£15	
977	★ 1883 "8 Cents" sideways on 2c. red-brown, very fine, centred rather low	£10	29
978	○ — Ditto, two examples off the same sheet and used one above the other, tied by two blue crayon marks	£10	
979	○ — Ditto, and "EIGHT CENTS" on 2c. brown, fine and lightly cancelled, the last with additional firm's mark	£8	
980	○ — Ditto, a rather similar lot	£7	
981	★ — "EIGHT CENTS" on 2c. brown, fine mint, slight crease	£6	29
982	○ — Ditto, variety SURCHARGE DOUBLE, fine and lightly cancelled, straight edge at foot	£50	29
983	★ 1886 perf. 14 1c. orange, fresh mint	£9	
984	★ — Perf. 16 1c. orange, fine with much original gum	£8	
985	★ — Ditto, as last, some gum disturbance	£6	
986	★ — Perf. 14 2c. brown, a mint horizontal pair, variety imperforate between, corner fault	£5	29

THE "BURRUS" NORTH BORNEO



977

981



986



982



Ex 994

Lot No.	Description	29 Nov. 1962	12.30 p.m.	Valuation	Photo Page
987	1886 overprinted "and Revenue", ½c. and 10c. unused, ½c. used, and Postal Fiscals 1886 3c. on 4c. and 5c. on 8c. used, each with straight edge. and 10c. on 50c.			£7	
988 ★	1886 surcharged perf. 12 "3 CENTS" (thick figure) on 4c. pink and "5 CENTS" on 8c. green, fine mint, the last with two thin spots			£7	
989 ★	Perf. 14, a fine block (3×2), the centre stamp of the lower row the rare type with thin figure of value, stuck down at each corner on piece of paper			£18	29
990 ★	— Ditto, the two types se-tenant in a horizontal pair, much original gum			£8	
991 ★	— Ditto, a similar pair, and "5 CENTS" on 8c. (2, one misplaced so that the "5" only shows), some original gum			£5	
992 ★	— Ditto, "5 CENTS" on 8c. green, variety surcharge inverted, much original gum. tiny area of thinning on top perfs.			£25	30



989

THE "BURRUS" NORTH BORNEO



Lot No.	Description	Valuation	Photo Page
		29 Nov. 1962 12.32 p.m.	
993	○ 1886-87 25c. indigo. a corner horizontal strip of five, the left hand pair imperforate between, the others with misplaced perforations, a corner pair imperforate between with double perforations at foot; also 1883 50c. violet with "FIFTY" variety, all cancelled to order (8 stamps)	£10	
994	★田 — Perf. 14 1c. pink, the error of value centrally placed in two blocks of nine (3×3), one perforated and the other IMPERFORATE, each block stuck down at each corner on a piece of paper	£75	29
995	★ — Perf. 12 ½c. magenta and 1c. orange, much original gum, each with a tiny thin spot	£5	
996	★ 1891-92 "6 cents" on 1886-87 8c. green, very fine mint, small vertical crease	£75	30
997	1916 overprinted Maltese Cross in vermilion 1c. to 4c. and in carmine 25c., all mint and a 1918 registered cover bearing vermilion 2c., 3c., 4c., 10c. and carmine 1c., 5c., 6c., 8c., 12c., 16c., 20c. and 24c. (17 stamps)	£9	
998	★ 1918 Red Cross 2c. surcharges, 9 mm. setting 1c. to 24c. and 13-14 mm. setting 25c. to \$10, fine mint. Cat. £37. (17 stamps)	£20	
999	★ 1919 Red Cross 4c. surcharges, 1c. to \$10 complete mint. Cat. £33. (17 stamps)	£18	
1000	★田 1931 Anniversary 3c. to \$5 complete in mint blocks of four. Cat. £52. (32 stamps)	£28	
1001	★ — Ditto, a mint set in singles	£6	
1002	★ — Ditto, a similar set	£6	
1003	★田 1939 1c. to \$5 complete in mint blocks of four. Cat. £42. (60 stamps)	£20	
1004	★ — Ditto, a mint set in singles (15 stamps)	£5	



1008

ENVOYEZ VOS MISES PAR ECRIT ou PAR UN COUP DE TELEPHONE  
Notre correspondente continentale les traduira



THE "BURRUS" COLLECTION

Lot No.	Description	29 Nov. 1962	12.35 p.m.	Valuation	Photo Page
1005	A selection of proofs, essays, bogus items and forgeries with 1884 4c. and 8c. (2) additionally perforated in centre; 1886 perf. 16 1c., "and Revenue" on ½c. in different type, and perf. 12 3c. on 4c., variety surcharge inverted; 1886-87 ¼c., 1c., 2c., 8c. and 10c. in horizontal pairs, variety imperforate between, red "5" on pair of used 1c. (on piece); 1889 \$5 in green and manuscript "Two" on 1888 25c., all unused (20 stamps)			?	
1006	1883-1948, a remainder of the earlys and a collection of the modern issues with 1883 2c. (12); 1884 4c. (9) and 8c. (6); 1886 to 10c. and 5c. on 8c. (2); 1886-89 to \$10; 1888-92 to \$2; 1892-93 1c. on 5c., a sheet and a block of four and 8c. on 25c.; 1894 to \$10; 1895 4c. to 40c. surcharges; 1897-1902 to 24c.; 1899 4c. surcharges (12) to \$10; 1904-05 4c. surcharges (12) to \$10; 1901-05 British Protectorate to \$10; 1909-22 to \$10; 1925-28 to \$10; 1948 \$10 and postage due stamps (96), 246 are unused (377 stamps)			£20	

Covers

1007	☒ 1884 cover from Elopura (and showing on face the date-stamp of this very rare office) to England bearing 1883 2c. brown pair and Straits Settlements 1882 10c. slate pair, the last cancelled at Singapore, the cover shows a fair Singapore "PAID" mark in red, a faint red cancel also ties the stamp. Probably unique			?	
<i>A photograph of this lot appears on the front cover of the November Philatelist.</i>					
1008	☒ 1887 cover to London bearing 1886 2c. pair and perf. 14 3c. on 4c. and 5c. on 8c., Sandakan bars cancellation			£25	30
1009	☒ 1891 (2); 1892 and 1893 covers, two to London, one to Singapore and one local bearing 1886-87 8c.; 1888-92 3c. (2) and 6c. (2) and 1891-92 6c. on 10c. (1886-87), all from Sandakan and one registered			£24	
1010	☒ 1891 cover from Sandakan to London bearing 1891-92 6c. on 8c. (1888-92); 1892 1c. on 8c. cards (2) with three additional adhesives (1886 2c. and 1891-92 6c. on 10c. (1888-92) and the other with 1892-93 8c. on 15c.), both registered to Singapore from Sandakan and 1906 registered cover from Jesselton to Zurich bearing 1904-05 4c. surcharges on 25c., 50c., \$1, \$2, \$5 and \$10			£20	

Pacific Islands

AITUTAKI

1011	★田 1903 perf. 14 ¼d., 1d. and 2½d. and perf. 11 3d. and 6d. (2); 1912-16 ¼d., 1d. (2), 6d. and 1/-; 1916-17 6d. and 1/-; 1917-18 2½d., 3d. (2), 6d. and 1/-; 1917-20 ¼d., 1d., 1½d. slate (2), 1½d. orange-brown (2) and 3d.; 1920 ¼d. to 1/-; 1927 ¼d. and 2½d., each in a mint block of four. Cat. £30 (132 stamps)			£15	
1012	— Ditto, ¼d. (2), 1d. (2) and perf. 11 2½d. (3), 3d. (2), 6d. (3), 1/- (5, one without stop); 1912-16 ¼d. (2), 1d. (2), 6d. and 1/-; 1916-17 6d. and 1/-; 1917-18 2½d. to 1/-; 1917-20 ¼d. to 3d.; 1920 ¼d. to 1/-; 1927 ¼d. and 1d. and 1927 2½d. (2), all mint, also 1903 perf. 14 1d. and perf. 11 2½d., 3d., 6d. (2) and 1/- and 1912 ¼d. used together on 1913 registered cover (52 stamps)			£10	

RAROTONGA

1013	1919 surface-printed ¼d. to 3d. and engraved 2½d. to 1/-; 1921 2/- to £1; 1920 ¼d. to 1/-; 1925 ¼d. and 1d.; 1926 2/- and 3/-; 1927 2½d. and 4d.; 1931 2d. on 1½d. (2); 1931 2/6 to £1, all mint, also 1920 registered cover bearing 1919 engraved 3d. to 4½d., 7½d. and 9d. and Cook Is. 1902 6d. Cat. 418/- (43 stamps)			£8	
1014	★田 — ¼d. to 3d. and engraved 2½d. to 1/- with two 4½d. (one with perf. variety); 1921 2/- to 10/- and 1931 2/6 to £1, each in a mint block of four. Cat. 855/- (88 stamps)			£18	
1015	★田 1920 ¼d. to 1/-; 1925 ¼d. and 1d.; 1926 Cowan 2/- and 3/-; 1927 2½d. and 4d. and 1931 2d. on 1½d. (both), each in a mint block of four. Cat. 235/- (56 stamps)			£18	

THE "BURRUS" SAMOA



1016



1017



1021



1022



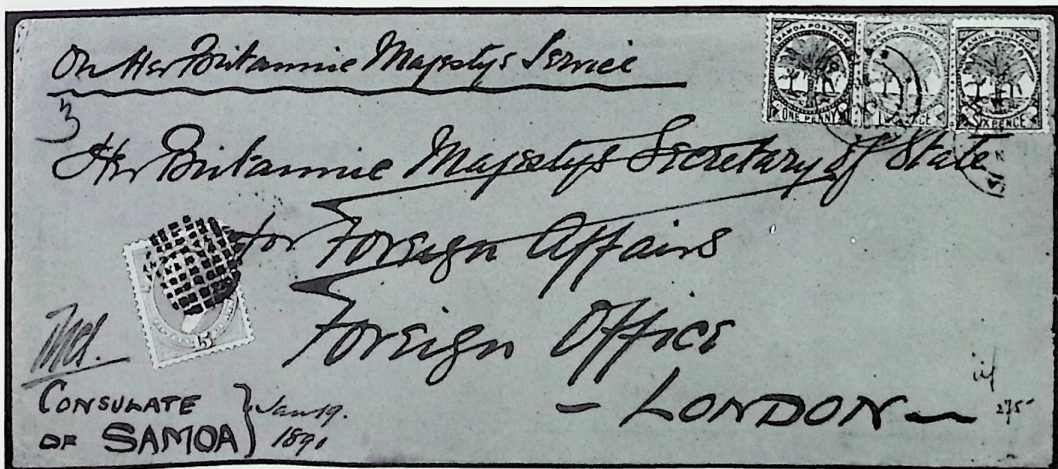
1028

THE "BURRUS" COLLECTION

Lot No.	Description	29 Nov. 1962	12.37 p.m.	Valuation	Photo Page
<b>Samoa</b>					
<b>1877 EXPRESS ISSUE</b>					
1016	★ <input type="checkbox"/> Second State: 1/- orange-yellow, the complete SHEET with much original gum			£45	32
1017	★ <input type="checkbox"/> — 2/- red-brown, the complete SHEET, a trifle stained			£60	32
1018	★ <input type="checkbox"/> Third State: Perf. 12 1d. blue, the complete SHEET, much original gum, slight crease and insignificant fox marks at top			£25	
1019	★ <input type="checkbox"/> — Ditto, 3d. vermilion, the complete mint SHEET			£35	
1020	★ <input type="checkbox"/> — Ditto, 6d. deep violet, the brilliant mint SHEET			£35	
1021	★ <input type="checkbox"/> — Ditto, 9d. orange-brown, the fine mint SHEET showing papermakers watermark			£40	32
1022	★ <input type="checkbox"/> — Ditto, 5/- yellow-green, the brilliant mint SHEET, very slightly creased, one the variety line not repaired			£140	32
1023	★ A selection with 1d. (3), 3d., 6d., 9d. (2), 1/- (2), 2/- (2, one a reprint) and 5/- (2, one a reprint), all but the two 1/- (second state), third state, fine unused			£10	
1024	○ Third State: Perf. 12½ 5/- green and perf. 12 6d. violet, both fine with Apia c.d.s.			£8	

LATER ISSUES

1025	★ <input type="checkbox"/> 1895 perf. 11 ½d., 2d. ochre, 2d. orange, 2½d. rose (a pane), 4d. (a pane), 5d. (complete sheet), 6d.; 1895 1½d. on 2d. and 3d. on 2d. (three panes); 1896 2½d. black and 1899 ½d. and 1d., each in a complete mint sheet split into two panes and 1899 Provisional Government ½d. to 2/6 in complete panes or sheet (5d.) (1,740 stamps)			£60	
1026	⊗ 1895 ½d.; 1899 1d. and Provisional Government 1d. used on 1900 cover to Germany; 1895 2/6 and 3d. on 2d. used on 1895 registered cover to Turkey; 1895 1½d. on 2d., 3d. on 2d.; 1896 2½d. and 1898-99 2½d. on 1/- on registered 1898 cover to Germany; 1898-99 2½d. on 1d. used on 1900 cover to Germany and 1914 ½d. to 1/- used on registered 1915 cover to New York, three show New Zealand Marine cancels			£15	
1027	⊗ 1891 (Jan. 28) O.H.B.M.S. cover from the Consulate of Samoa to the Foreign Office, London, bearing 1887 ½d., 2d. and 6d. cancelled Apia and United States 1879 15c. with dumb cancel. Very rare			£60	33
1028	△ 1887 1d. and 2d. tied to piece by Apia c.d.s., the 1d. partly overlapped by United States 1888 5c. cancelled with "dumb"			£15	32



## THE "BURRUS" COLLECTION

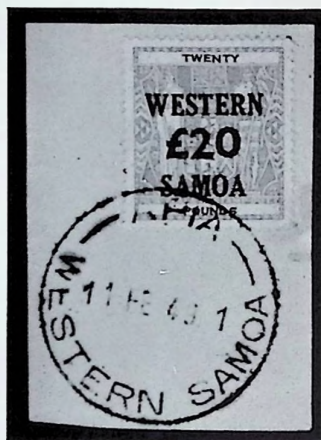
Lot No.	Description	29 Nov. 1962 12.40 p.m.	Valuation	Photo Page
1029	☒ 1887-92 ½d. used on 1d. postcard to Germany; 1d. and 1/- used together on 1895 cover to England; 2½d. rose and 1898-99 2½d. on 1d. and 2½d. on 1/- used on 1d. postcard to Honolulu; 1895 1/-, bisected diagonally used on 1895 cover to New Zealand and 1914 rough 2/6 used on 1919 cover		£12	
1030	★ 1887-95 to 2/6 and four blocks of four to 1/-; 1895-99 provisionals (10); 1899 to 2/6; 1914 to 1/-; 1916-19 to 1/-; 1920 ½d. to 1/-; 1921 ½d. to 1/-; 1926-28 2/- and 3/-; 1932 2/6 to £1; 1935 Jubilees and Pictorials to 3/- and 1939 to 7d., nearly all fine mint (109 stamps)		£10	
1031	★田 1914 ½d. to 1/-; 1916-19 ½d. to 1/-; 1920 ½d. to 1/-; 1921 ½d. to 1/-; 1926-28 2/- and 3/-; 1935 Jubilees; 1935 to 3/- and 1939 1d. to 7d., each in a mint block of four. Cat. £29 (204 stamps)		£11	
1032	★田 1914-31 rough perf. 2/6 and clean-cut perf. 2/-, 5/- to £1, each in a mint block of four. Cat. 468/- (20 stamps)		£14	
1033	★ — Ditto, 2/6, 10/- and £1 and clean-cut perf. 2/-, 5/- and 1922-24 £2, fine mint. Cat. 344/-		£9	
1034	★田 1922-24 £2 mauve. a superb mint block		£25	
1035	★田 1932 Arms 2/6 to £1 complete in mint blocks of four. Cat. £32		£20	



1038

1039

1040



1041

### Western Samoa

1036	★田 1935 2/6 to £2 complete in mint marginal blocks of four. Cat. 814/-	£30	
1037	★ 1947-50 30/-, £2, £3 and £5, fine mint. Cat. 315/-	£8	
1038	★ — £10 blue, fine mint	£10	34
1039	★ — Ditto, a very similar example	£10	34
1040	★ — £20 yellow, fine mint	£20	34
1041	△ — Ditto, fine used on piece with Apia c.d.s.	£20	34



Ex 1042

Ex 1044

Ex 1045

THE "BURRUS" COLLECTION

Lot No.	Description	29 Nov. 1962	12.43 p.m.	Valuation	Photo Page
<h2>Solomon Islands</h2>					
1042	★田 1907 ½d. to 1/- complete in mint blocks of four, all but the last marginal. Cat. 930/- (28 stamps)			£25	34
1043	★ — Ditto, and 1908-11 ½d. to 5/-, complete mint sets. Cat. 424/- (18 stamps)			£10	
1044	★田 1908-11 ½d., 1d. (2) to 5/- complete in mint blocks of four. Cat. 776/- (48 stamps)			£24	34
1045	★田 1913 ½d. to 11d. and 1914-23 ½d. to £1 complete in mint blocks of four. Cat. £85 (72 stamps)			£40	34
1046	★ — ½d. to 11d.; 1914-23 ½d. to £1; 1922-31 ½d. to 10/-; 1935 Jubilees: 1937 Coronations and 1939-51 to 5/-, fine mint. Cat. 996/- (65 stamps)			£18	
1047	★田 1922-31 ½d. to 10/- with duplicate 4½d.; 1935 Jubilees; 1937 Coronations and 1938 ½d. to 5/-, each in a mint block of four. Cat. £54 (140 stamps)			£30	
1048	☒ 1908-11 2/-, 2/6 and 5/- used on separate fronts and 1914-23 3d. and 2/6 in blocks of four used on separate covers			£12	

## Tonga

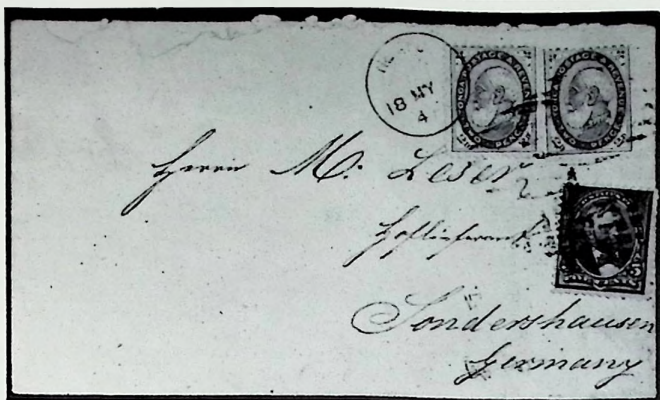
1049	1886-88 1d. to 1/- used; 1891 4d. and 8d. and overprinted "stars" 1d. and 2d.; 1892 6d.; 1892 1d. to 1/-; 1893 surcharges (6); 1894 ½d. (2) and 2½d. (2) surcharges; 1895 1d. to 7½d. surcharges; 1895 1d. to 7½d. and 1895 (Sept.) surcharges (3) and Official stamps with 1893 (Feb.) 1d. to 1/- and 1893 (Dec.) ½d. to 10d., mostly fine unused. Cat. £36 (45 stamps)			£18	
1050	田 — 6d. blue, perf. 12½, an unused and used block of four, the first a little stained			£5	
1051	★田 1891 overprinted stars 1d. carmine perf. 12×11½ and 2d. violet perf. 12×11½, each in a block of four with much original gum, rare. Cat. £31			£20	35
1052	★田 1894 ½d. on 4d. and 1895 ½d., 1d. and 7½d. surcharges, each in a block of four, the first and the last mint, one very slightly foxed. Cat. £21			£12	
1053	★ 1896 Half-Penny on 1½d. on 2d. with Tongan inscription reading downwards, perf. 12×11, unused with some original gum and Half-Penny on 7½d. on 2d. with Tongan inscription, unused but a little stained			£4	
1054	★田 1897 ½d. to 5/- complete in mint blocks of four. Cat. 750/- (56 stamps)			£18	
1055	— ½d. to 5/-; 1899 1d.; 1920-27 2d. (2) to 1/-; 1923-24 2d. provisionals complete; 1934-35 ½d. to 2½d. and 1938 1d. to 2½d., all mint but two. Cat. 493/- (35 stamps)			£10	
1056	★田 1923-24 TWO PENCE provisionals 5d. to 10d., 2/- and 5/-, each in a mint block of four. Cat. 344/- (20 stamps)			£10	
1057	★田 1920-37 2d. (2) to 1/-; 1934-35 ½d. to 2½d. and 1938 1d. to 2½d., each in a mint block of four. Cat. 431/- (52 stamps)			£8	



Ex 1051

PALL MALL AUCTIONS ARE QUALITY AUCTIONS

THE "BURRUS" COLLECTION



1059

Lot No.	Description	Valuation	Photo Page
		29 Nov. 1962 12.47 p.m.	
<i>Covers</i>			
1058	☒ 1892 (Aug.) registered front to London bearing three examples of the 1891 4d. on 1d., rare	£15	
1059	☒ 1892 (May) cover to Germany bearing 1886 2d. pair and United States 1890 5c. cancelled at San Francisco, a wonderful and rare combination	£100	36
1060	☒ 1893 (Aug.) cover to London bearing 1891 "stars" 2d. and 1892 1d. (2) and 2d., attractive	£18	
1061	☒ 1893 (Dec.) local cover bearing on face 1892 1d. pair and on reverse 1886 2d., a little stained, very rare	£14	
1062	☒ 1894 (May) cover to New Zealand with 1893 5d. on 4d. and 7½d. on 8d., very fine	£12	
1063	☒ 1894 (Sept.) cover to Germany bearing 1894 2½d. on 8d., stamp a little discoloured, rare	£7	
1064	☒ 1896 (Aug.) registered front to Germany franked by 1895 1d. and 5d. and 1896 ½d. on 7½d. on 2d., Tongan inscription running downwards, fine	£20	
1065	☒ 1898 registered cover to Berne bearing 1897 2/6; 1919 registered cover to Zurich with 1898 5d. and 1924 registered cover to Sydney with 1923-24 2d. on 2/-, 2d. on 2/6 and 2d. on 5/-	£15	
1066	☒ 1900 picture postcard to Auckland franked by 1898 1d. and 3d., the last bisected diagonally, an interesting 2½d. rate	£10	

*Europe*

IRELAND

1067	★ 1922-37, the mint collection with 1922 (Feb.) Dollard to 10/- in singles and blocks of four; 1922 (Dec.) Saorstát to 10/- in singles and blocks of four; 1925-27 to 10/-; 1935 Waterlow to 10/- in singles and blocks of four and 1940-49 to 10/-, five sets. Cat. £116 (319 stamps)	£40
------	--	-----

THE END OF THE SECOND SESSION

FOR COLOUR ILLUSTRATIONS

see Plate F in the

BURRUS COLOUR PLATES

THE "BURRUS" COLLECTION

Third Session at 2 p.m.

*New Brunswick*

1851 ISSUE

*Unused*



1068

1069

1070

Lot No.	Description	Valuation	Photo Page
		29 Nov. 1962	
1068 ★	3d. dull red, BRILLIANT MINT, cut very close at one corner, an exceptional colour	£50	37 F
1069 ★	6d. yellow, BRILLIANT unused	£100	37 F
1070 ★	— Fresh with much original gum, slight crease	£100	37 F
1071 ★	1/- reddish mauve, EXCEPTIONALLY FINE with large part original gum	£700	37 F



1071



1079



1092



1081

1082

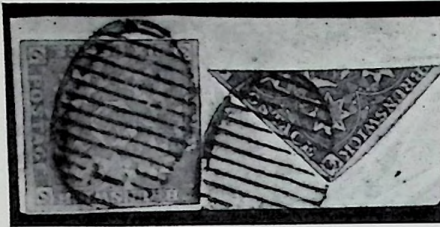
1090



1093

1098

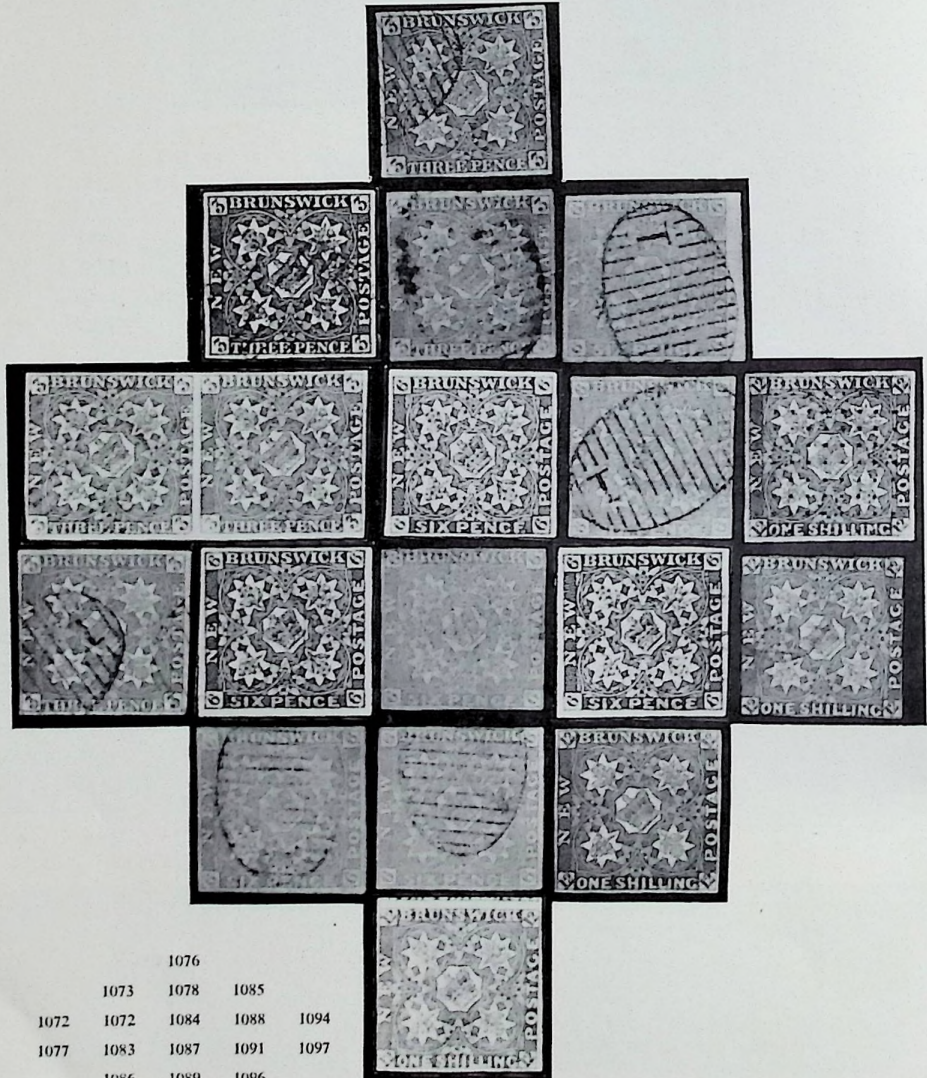
THE "BURRUS" NEW BRUNSWICK



1074



1075



- |      |      |      |      |      |
|------|------|------|------|------|
|      |      | 1076 |      |      |
|      | 1073 | 1078 | 1085 |      |
| 1072 | 1072 | 1084 | 1088 | 1094 |
| 1077 | 1083 | 1087 | 1091 | 1097 |
|      | 1086 | 1089 | 1096 |      |
|      |      | 1095 |      |      |

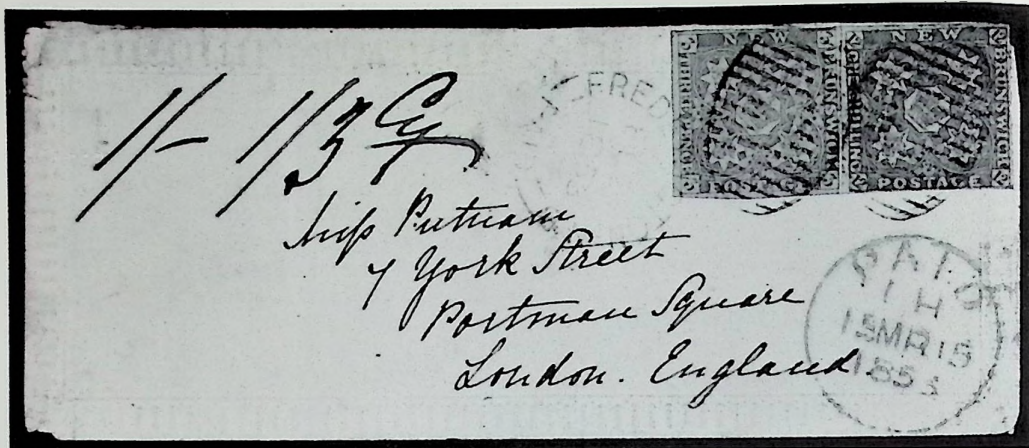


## THE "BURRUS" NEW BRUNSWICK

Lot No.	Description	Valuation	Photo Page
1851 ISSUE—continued			
29 Nov. 1962    2.01 p.m.			
<i>Used</i>			
1072	○ 3d. pale red, an exceptional pair lightly cancelled in blue, slight crease between stamps	£60	38 F
1073	○ 3d. bright red, a lovely colour, SUPERB. Ex-Ferrari	£35	38 F
1074	△ — Variety BISECTED DIAGONALLY, very fine used (not tied on bisected side) on piece with 6d. yellow, just shaved at one corner	£100	38
1075	△ 3d. red, variety BISECTED VERTICALLY, fine used on small piece with a pair of whole 3d. stamps, not tied on bisected side, full margins practically all round	£75	38
1076	○ 3d. dull red, superb	£35	38
1077	○ — Exceptionally fine	£30	38
1078	○ — A delicate pale shade, lightly cancelled and fine	£20	38
1079	○ 6d. yellow, superb cancelled with red "EXPRESS MAIL" date-stamp. A marvellous colour combination of exceptional rarity	£250	37 F
1080	△ — A pair used on dated piece, very close to good margins, one slightly creased	£100	39
1081	○ — In FINEST POSSIBLE CONDITION. Ex-Ferrari	£110	37 F
1082	○ — A wonderful example	£100	37
1083	○ — Superb and lightly cancelled "23"	£90	38 F
1084	○ — Exceptionally fine and lightly cancelled "8"	£90	38
1085	○ — Very fine and marginal	£75	38
1086	○ — Very fine	£70	38
1087	○ — Fine and very lightly cancelled	£50	38
1088	○ — Fine and clearly cancelled	£50	38
1089	○ — Fine and lightly cancelled in blue	£50	38
1090	○ 6d. olive-yellow, a MAGNIFICENT example	£150	37
1091	○ — A wonderful copy lightly cancelled "8" in blue, insignificant corner crease	£100	38 F
1092	○ 1/- reddish mauve, an exceptional copy with the lightest possible cancellation. Ex-Ferrari	£300	37
1093	○ — Very fine and lightly cancelled	£200	37
1094	○ — Very fine with "dots" cancel, colour a little weak in parts	£200	38
1095	○ — Very fine with one huge margin, lightly cancelled in blue	£160	38 F
1096	○ — Of fine appearance, pen-cancel removed	£60	38
1097	○ — A good example, faults, lightly cancelled	£30	38
1098	○ 3d. red, clear margins, pen marks removed	£10	37



1080



1099



1103



1105

THE "BURRUS" NEW BRUNSWICK



ST. JOHN - N.B.  
 PAID  
 LIVERPOOL  
 BR. PACKET  
 26 DE 53  
 2D

*Mr. J. H. H. H. H. H.*  
*Mr. H. H. H. H. H.*

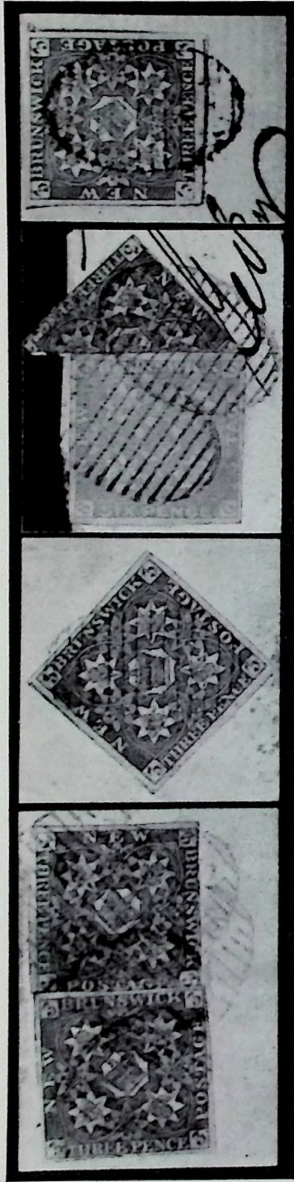
*Marwick on Speed  
 North Britain*

*J.F.*

1104

Lot No.	Description	29 Nov. 1962	2.08 p.m.	Valuation	Photo Page
<i>Covers</i>					
1099	☒ 1853 fancy envelope from Fredericton to London bearing 3d. red and 1/- reddish mauve, both with full margins, the last with insignificant crease. A delightful combination of great rarity			£350	40
1100	☒ 1854 cover from Chatham to New York franked by two 3d. bright reds, slightly overlapping apparently full margins and nicely cancelled "8" in blue. Addressee's name is excised			£50	42
1101	☒ 1856 local cover bearing superb 3d. bright red			£65	42
1102	☒ 1858 (Mar.) (?) cover to London franked by no less than five single 6d. yellows, one is superb, the others are touched or close in places but what A WONDERFUL ITEM			£650	52
1103	☒ 1858 (Dec. 1st) cover from Shediac to New York State bearing a most wonderful example of the 6d. pale yellow, the cover shows circular "PAID/10" in red			£275	40
1104	☒ 1858 (Dec. 19th) cover from St. John to England bearing 3d. bright red, variety diagonally bisected and a pair of whole stamps, fine with full margins, not tied on bisected side. Most attractive			£250	41
1105	☒ 1859 (May 7th) cover to London bearing 3d. pale red, bisected diagonally, used with 6d. olive-yellow, both exceptionally fine and a magnificent cover, flap missing			£350	40
1106	☒ 1859 (June 28th) cover from St. John to Scotland franked by 3d. red, bisected diagonally (a corner was originally folded over the edge of the cover) and 6d. yellow, the last extremely fine			£140	42
1107	☒ 1859 (June) cover from Newcastle to Moncton with fine 3d. red with huge margins, pen cancellation removed			£65	42
1108	The 1890 reprints: 3d., 6d. and 1/-, fine			£15	

THE "BURRUS" NEW BRUNSWICK

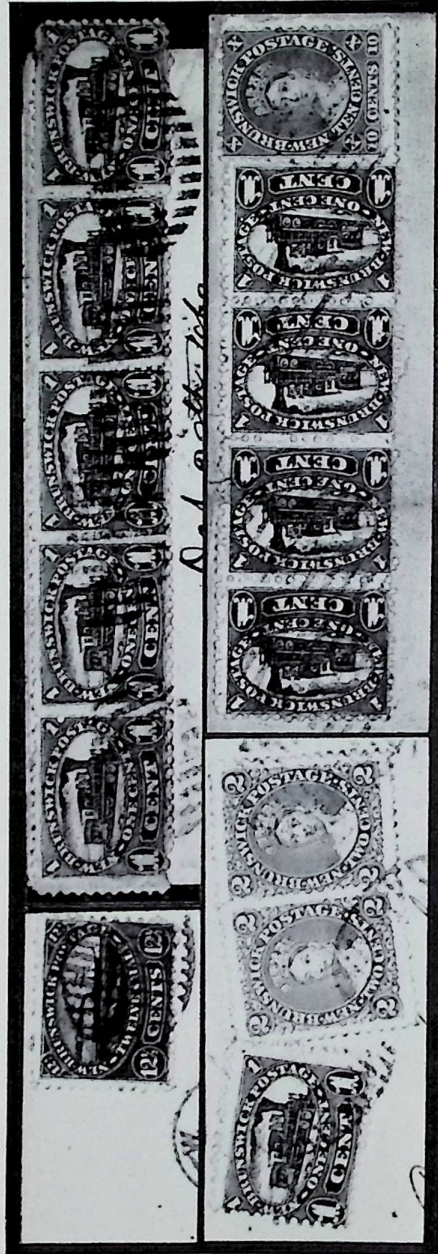


1100

1101

1106

1107

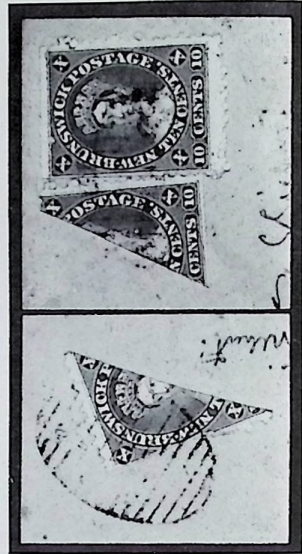


1121

1127

1124

1126



1128

THE "BURRUS" COLLECTION

Lot No.	Description	29 Nov. 1962	2.10 p.m.	Valuation	Photo Page
<b>1860-63 ISSUE</b>					
<i>Proofs</i>					
1109	Ⓟ 5c. brown, Connell, fine imperforate on thin paper			£9	
1110	Ⓟ — A similar proof on thicker paper			£6	
<i>Unused</i>					
1111	★ 1c. (8), 2c. (3), 5c. (3), 10c. (2), 12½c. (2) and 17c. (2) unused shades, some with much original gum			£15	
1112	★ 1c. (8), 2c. (2), 5c. (4), 10c. (3), 12½c. (3) and 17c. (2), a rather similar selection			£12	
1113	★田 1c. dull claret, 12½c. indigo and 17c. black, each in a block of four with much original gum			£12	
1114	★ 5c. sap-green, fine unused, centred to left			£15	
1115	★ — A rather similar example, colour not as intense			£12	
1116	★田 10c. red, block (3 × 3), 12½c. indigo, marginal block (3 × 3) and 17c. black, block (2 × 3), much original gum			£25	
1117	★田 12½c. blue, a very fine block (4 × 3) with much original gum, slight crease on two stamps			£12	
1118	★田 17c. black, two blocks of six (2 × 3 and 3 × 2)			£6	
<i>Used</i>					
1119	○ 1c. (5), 2c. (2), 5c. (3), 10c. (2), 12½c. and 17c. (11), mainly fine, six are dated			£14	
1120	○ 5c. block of four and 10c. clearly cancelled with "6" grid and placed on a piece to which they do not belong			£15	
<i>Covers</i>					
1121	⊗ 1860 (July) local cover franked by 10c. red, variety bisected diagonally, not tied on bisected side			£20	42
1122	⊗ 1860 (Dec.) local cover bearing 10c. red, variety bisected diagonally with a whole stamp (some perforations trimmed), lightly tied on bisected side			£60	42
1123	⊗ 1861 cover from St. John to London, England, bearing 12½c. indigo, attractive			£25	42
1124	⊗ 1862 (Oct.) cover from Baie Verte to Kentville, Nova Scotia, bearing a strip of five 1c. (one creased through being bent round the edge of the cover), a little stained but unusual			£30	42
1125	⊗ 1863 (May) cover from the same correspondence with a single 5c. and 1865 (Dec.) cover to Dartmouth, Nova Scotia, bearing a 5c. and a 10c., the first a trifle stained			£30	
1126	⊗ 1863 (June) cover from Miramichi to St. Johns, Newfoundland, bearing a vertical strip of four of the 1c. (one creased by letter fold) and a single 10c. Most attractive			£60	42
1127	⊗ 1864 (June) cover from St. John to Harvey bearing 1c. and two 2c., fine and attractive, flap missing			£22	42
1128	⊗ 1867 cover to France franked by 10c. red and 17c. black, a wonderful and exceptional item			£100	42

FOR COLOUR ILLUSTRATIONS

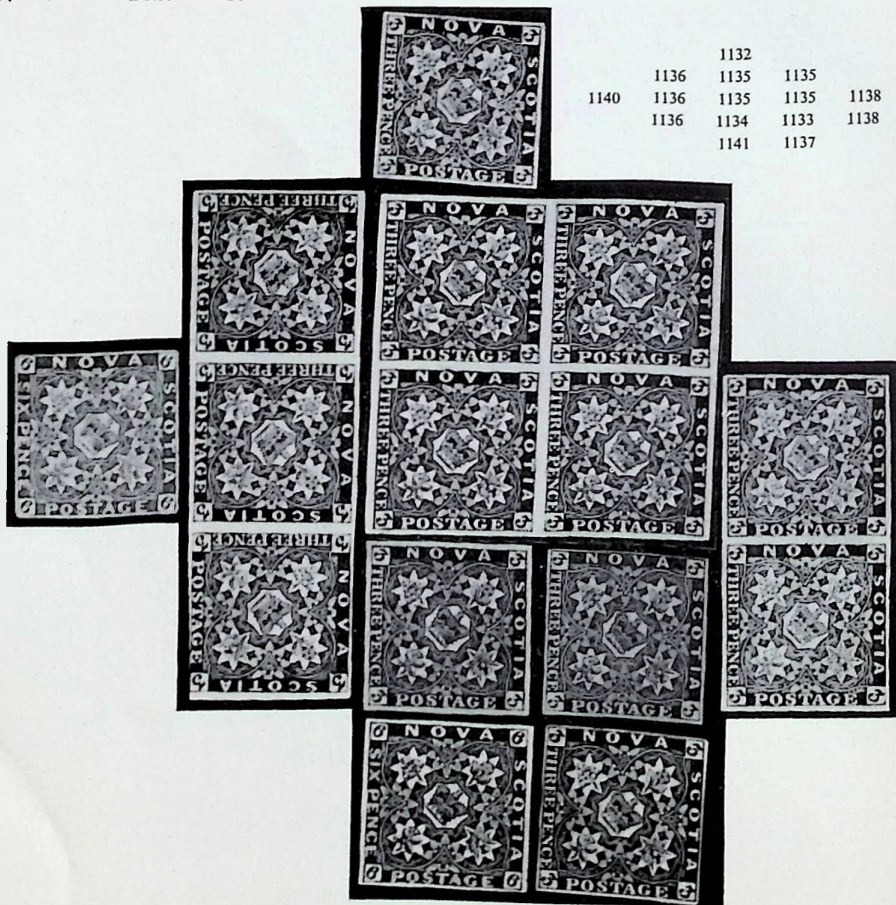
see Plate F in the  
BURRUS COLOUR PLATES

# Nova Scotia 1851-53 ISSUE

*Unused*



Lot No.	Description	29 Nov. 1962	2.15 p.m.	Valuation	Photo Page
1129	★ 1d. red-brown, a marvellous FRESH copy, much original gum			£100	44
1130	★ — Very fine unused			£60	44
1131	★ — Good to large margins, twice creased, thin spot			£30	44
1132	★ 3d. Prussian blue on thick paper, fresh with large margins nearly all round. Ex-Ferrari			£40	44
1133	★ 3d. deep blue, very fine MINT. Ex-Ferrari			£50	44
1134	★ — Large margins, small crease, tiny thin			£12	44
1135	★ 3d. bright blue. A SUPERB and BRILLIANT BLOCK			£300	44 F
1136	★ — A BRILLIANT MINT STRIP in an oily print, one slightly creased and just shaved at one corner			£100	44
1137	★ — Fine unused			£12	44



THE "BURRUS" COLLECTION



1142

Lot No.	Description	Valuation	Photo Page
	29 Nov. 1962    2.17 p.m.		
1138 ★	3d. blue, a fresh MINT PAIR on stout paper, trace of previous mount, very lovely	£100	44
1139 ★	6d. yellow-green, SUPERB MINT	£100	F
1140 ★	— Fine unused	£20	44
1141 ★	6d. deep green, some original gum, thinned. very fresh	£75	44
1142 ★	1/- purple, EXCEPTIONALLY FINE and of the GREATEST POSSIBLE APPEAL	£900	45 F



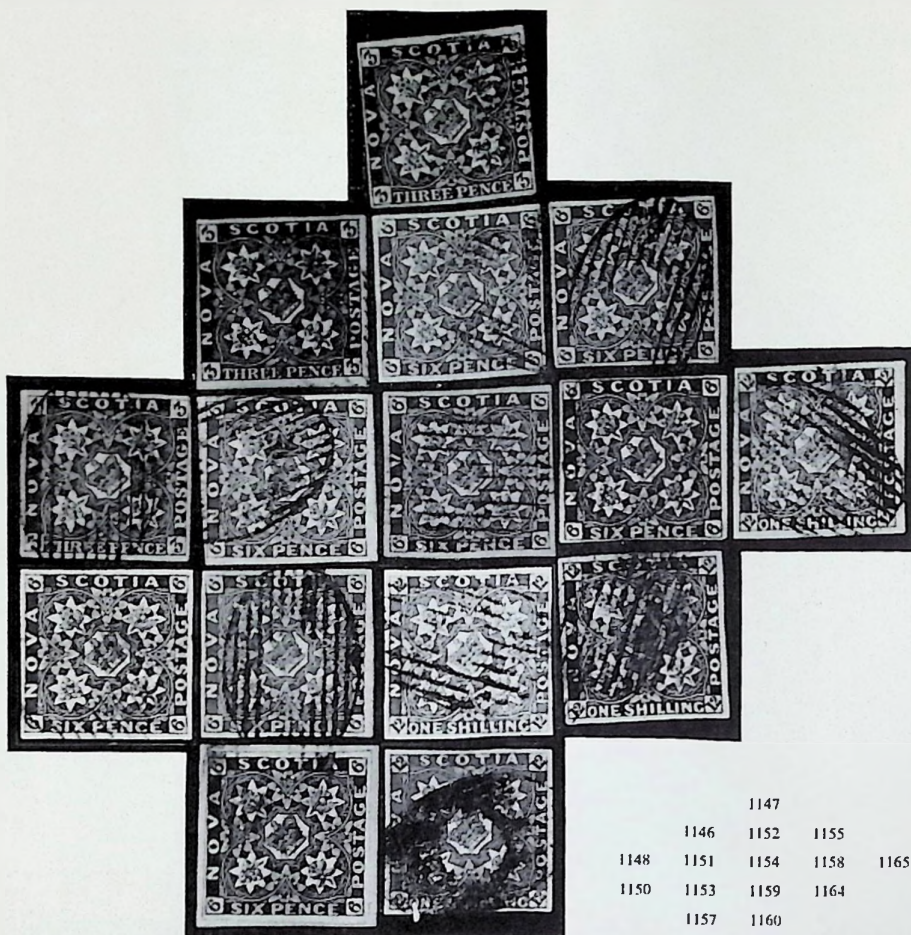
1143

1144

*Used*

1143 ○	1d. red-brown, SUPERB PAIR	£125	45
1144 ○	— Very fine with enormous margins	£45	45
1145 ○	3d. deep blue, a very fine pair, tiny paper flaw	£15	
1146 ○	— Marvellous and lightly cancelled	£18	46
1147 ○	— Very fine	£12	46
1148 ○	— A very similar copy	£10	46
1149 ○	— Fine, light cancellation	£7	
1150 ○	6d. yellow-green, SUPERB	£60	46 F
1151 ○	— Equally superb with huge margins in two places	£60	46
1152 ○	— Marvellous with three large margins	£55	46
1153 ○	— Very fine and clearly cancelled, tiny thin spot	£40	46
1154 ○	— Fine, slight ironed out crease	£25	46
1155 ○	— Fine, tiny corner thin	£25	46
1156 ○	— Of fine appearance, penmark removed	£10	

THE "BURRUS" NOVA SCOTIA



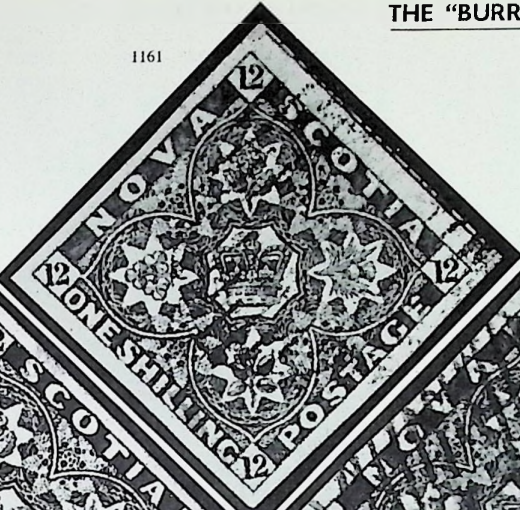
					1147
					1146 1152 1155
				1148 1151 1154 1158	1165
				1150 1153 1159 1164	
				1157 1160	

Lot No.	Description	29 Nov. 1962	2.22 p.m.	Valuation	Photo Page
1157	△ 6d. deep green, very fine used on small piece			£55	46
1158	○ — Fine with close to large margins, tiny blue ink mark			£20	46
1159	○ 1/- cold violet, very fine and clearly cancelled, a small thin has been filled in			£150	46 F
1160	○ 1/- deep purple, large regular margins, rather heavily cancelled. An extraordinary colour			£200	46
1161	○ 1/- purple, an ENORMOUS example			£750	47 F
1162	○ — SUPERB			£650	47 F
1163	○ — Very fine and clearly cancelled in blue, traces of a black cancel can also be discerned			£600	47 F
1164	○ — Large margins but rather heavily cancelled			£125	46
1165	○ — Extremely large margins, colour weak in places and ironed out crease			£40	46

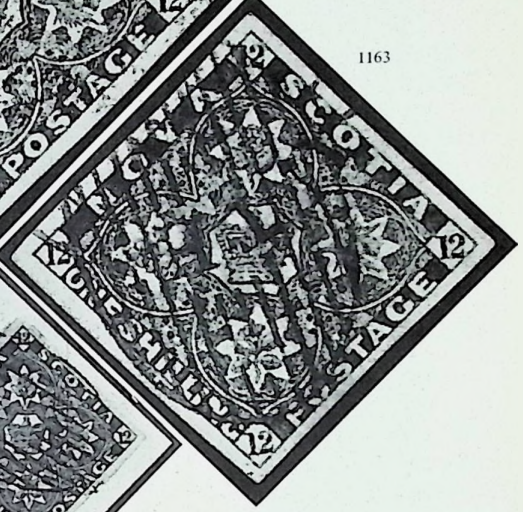
FOR COLOUR ILLUSTRATIONS  
see Plate F in the  
BURRUS COLOUR PLATES



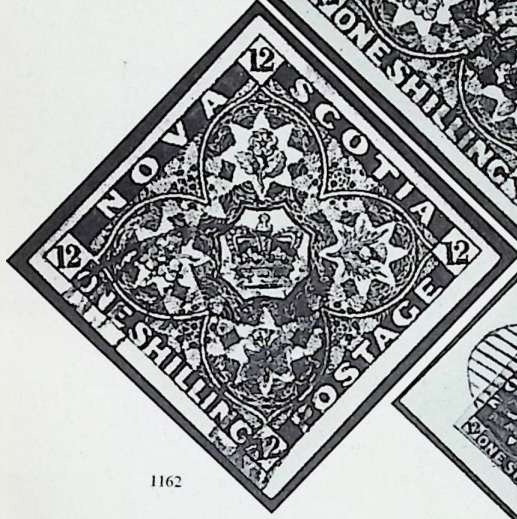
1161



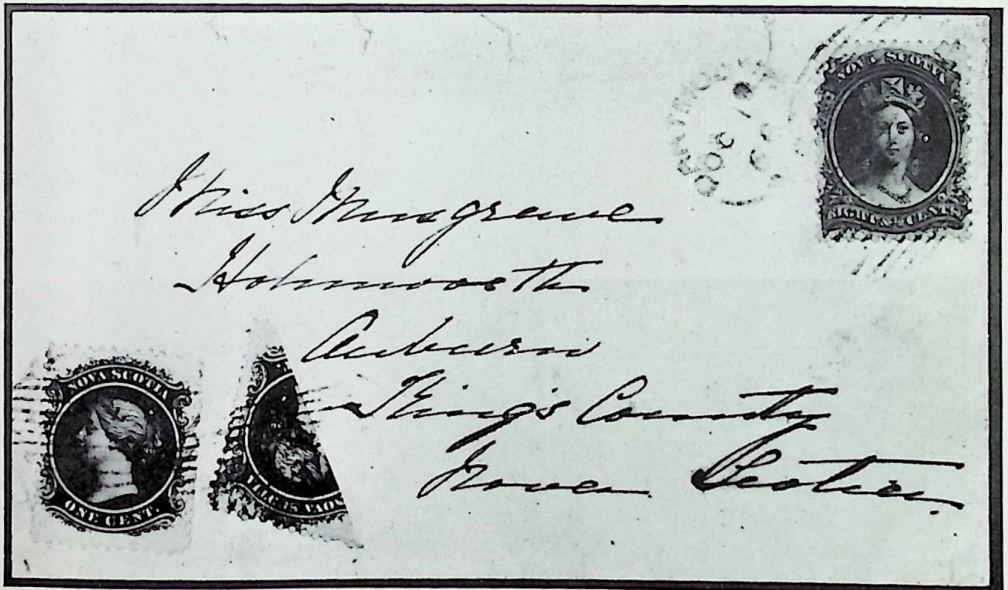
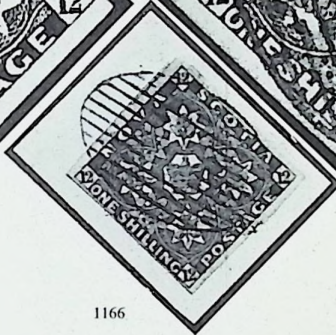
1163



1162



1166



1197

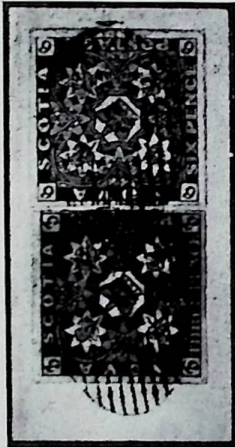
THE "BURRUS" NOVA SCOTIA



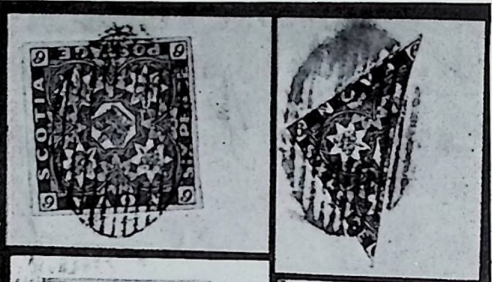
1171



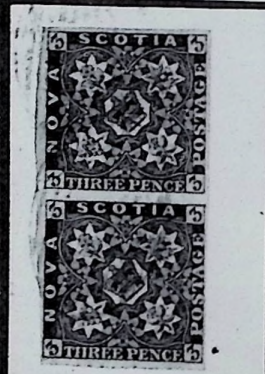
1175



1172



1169



1168



1177



1173



1167



1176



1174



1170

THE "BURRUS" COLLECTION

Lot No.	Description	29 Nov. 1962	2.24 p.m.	Valuation	Photo Page
<i>Covers</i>					
1166	☒ 1853 (Dec.) cover endorsed "Paid with Stamp" with 1/- purple, three very large margins, used from Guisborough to Halifax			£300	47
1167	☒ 1854 (Dec.) large part cover from Amherst to Liverpool, England, franked by 3d. deep blue, bisected diagonally and two whole 3d.s, arranged in the form of an arrow, one whole stamp creased by letter fold			£50	48
1168	☒ 1855 (Mar.) cover to the U.S.A. with vertical pair of 3d. blue, margins all round, one stamp creased by letter fold, the other with small scissor cut into design			£20	48
1169	☒ 1856 (Aug.) cover from Pictou to Boston, Mass., franked by superb 6d. yellow-green			£125	48
1170	☒ 1857 (Jan.) cover from Halifax to Cape Breton with 6d. yellow-green bisected diagonally, touched on one side and slightly creased by letter fold			£35	48
1171	☒ 1857 (Feb.) local cover bearing 1d. red-brown, a vertical strip placed sideways, full margins and lightly cancelled. Most attractive			£175	48
1172	☒ 1857 (May) registered money letter from Pictou to Antigonish franked by 3d. bright blue and 6d. yellow-green, both wonderful copies			£180	48
1173	☒ 1857 (Oct.) cover from Parrsborough to Liverpool, England, bearing 3d. blue bisected diagonally and 6d. yellow-green, both exceptionally fine			£225	48
1174	☒ 1858 (Nov.) cover from Pictou to Newcastle-upon-Tyne similarly franked to the last but the 6d. is deep green which is slightly overlapped by the 3d., not tied on bisected side			£125	48
1175	☒ 1858 (Dec.) cover from Wallace to Harbour Grace, Newfoundland, unusually franked by 1d. red-brown, a wonderful pair and 6d. deep green, small corner scuff			£150	48
1176	☒ 1859 (Dec.) cover from Truro to Halifax bearing 3d. azure-blue, large to huge margins			£25	48
1177	☒ Undated front to Halifax bearing 6d. deep green, variety bisected diagonally, close to large margins			£125	48
1178	The 1890 reprints, a complete set			£40	

1860-63 ISSUE

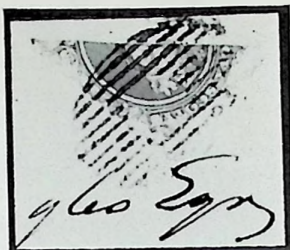
*Unused*

1179	★田 1c., 8½c. and 12½c. on yellowish paper and 2c. and 10c. on white paper, each in a complete sheet of a hundred			£90	
1180	★田 1c., marginal block (3 × 2), 8½c., irregular block of ten, 12½c., marginal block (3 × 2) on yellowish paper and 2c., block of four and 10c. marginal block (2 × 10) on white paper, all mint. Cat. 450/- (46 stamps)			£6	
1181	★田 1c. and 8½c. in corner blocks (4 × 2) and 12½c., two marginal blocks of four on yellowish paper and 2c. and 10c. in corner blocks (4 × 2) on white paper (40 stamps)			£5	
1182	★ 1c., 5c. (four unused singles), 8½c. and 12½c. on yellowish paper, 2c. and 10c. on white paper, each in a mint block of four (24 stamps)			£12	

THE "BURRUS" NOVA SCOTIA



1185



1188

Lot No.	Description	Valuation	Photo Page
	1860-63 ISSUE—continued	29 Nov. 1962 2.29 p.m.	
1183	★ 5c., three singles with much original gum, on yellowish paper, two with small faults	£8	
1184	★ — Three unused singles, one with small thin	£8	
	<i>Used</i>		
1185	△ 2c. on white paper bisected diagonally, and a whole stamp used on small piece, straight edge at top	£20	50



1186

1187

*Covers*

1186	⊗ 1860 (Nov.) cover from Amherst to Massachusetts bearing 10c. on white paper, very fine	£20	50
1187	⊗ 1861 (Apr.) cover from the same correspondence, similarly cancelled	£20	50
1188	⊗ 1861 (June) cover used from Wilmot to Bridgetown bearing 10c., variety bisected diagonally, most attractive	£60	50
1189	⊗ 1862 (Oct. 30th) cover from Halifax to London, England, franked by marginal 12½c. on white paper	£12	
1190	⊗ 1862 (Oct. 31st) cover from Halifax to St. Johns, Newfoundland, bearing 5c. pair on white paper, most attractive	£14	
1191	⊗ 1863 (July) cover from Halifax to Aldershot bearing fine 12½c., addressee's name excised	£10	
1192	⊗ 1864 (Oct.) cover from Digby to New York with 10c. on white paper, two tears at foot, fine and attractive	£12	
1193	⊗ 1865 (Mar.) cover from Halifax to Mabou bearing 1c. on yellowish paper, very fine with clear profile	£10	
1194	⊗ 1865, two local covers, each bearing 2c. on white paper, one faintly foxed	£10	

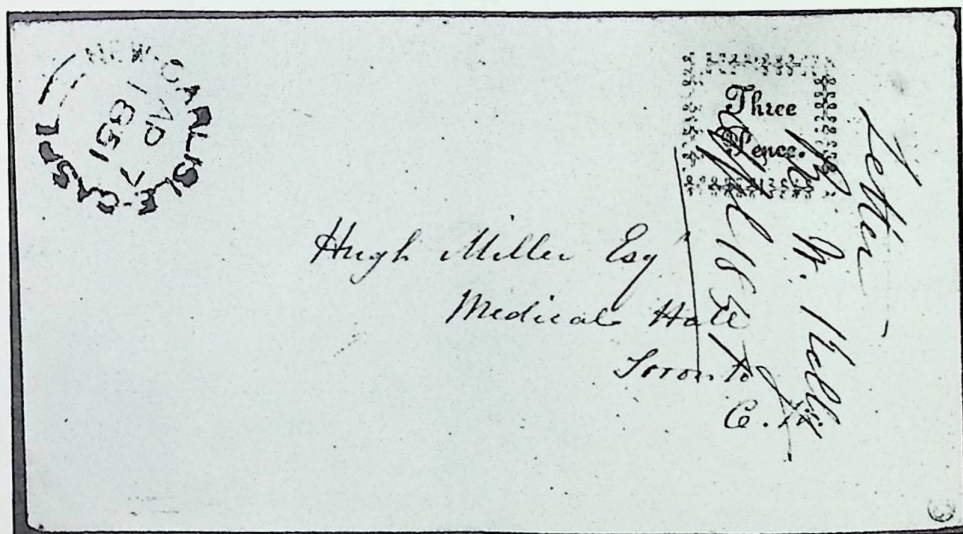
PALL MALL AUCTIONS ARE QUALITY AUCTIONS

## THE "BURRUS" COLLECTION

Lot No.	Description	Valuation	Photo Page
	29 Nov. 1962 2.32 p.m.		
1195	☒ 1867, two local covers, one bearing 2c. and the other 5c. (a little torn)	£12	
1196	☒ — A local cover bearing 2c. on white paper placed sideways, attractive	£7	
1197	☒ 1868 (Oct.) reinforced cover from Dartmouth to Auburn bearing 1c. BISECTED DIAGONALLY, used with a whole 1c. and 8½c. A very rare make-up for the 10c. rate. With R.P.S. Certificate	£300	47
1198	☒ Undated printed wrapper to Annapolis bearing a single 1c., rare	£12	
1199	The remainder with 1c. (11, one used), 2c. (15, two used), 5c. (17, seven used), 8½c. (13, two used), 10c. (9, three used) and 12½c. (5, one used), mainly good to fine (70 stamps)	£10	

THE END OF THE SALE

## THE BURRUS CANADA



A curious 1851 cover with the type-set "Three Pence".  
Is there a story behind this Ferrari cover?



To be sold by Fred Rich of New York.

# BURRUS PRESENTATION LEAF

## *The Burrus Collection.*

*The item mounted on this page was purchased from the world famous stamp collection formed by the late Maurice Burrus of St. Grou-aur-Mines, France*



*Lot No. 1102, in the Auction Sale held on 20th November by  
Robson Lowe Ltd. 50, Pall Mall, London, (W.1)*

The Godden "de Luxe" album page illustrated above shows how the Burrus rarities are being presented. Each page has the inscription engraved and the whole is covered with a glassine envelope.

Other lots of lesser value are mounted on Walker loose-leaves, but these will be transferred to the Godden engraved leaf on request, the additional cost being 10/- per page. Lots mounted on original Burrus leaves have been embossed to this effect.

## STANDARD CONDITIONS OF SALE

Every Lot in our Auctions is offered subject to the "*Philatelic Auctioneers' Standard Terms and Conditions of Sale*", a copy of which may be obtained free on request from our Offices.

A synopsis of these Conditions of Sale is printed below.

1. The purchaser to be the highest bidder. Any dispute arising will be determined by the Auctioneer who may immediately re-offer any disputed lot.
2. (a) The bidding and advances to be regulated at the Auctioneer's discretion.  
(b) Buyers to give their names and addresses; also, if required, to pay down the whole or part of the purchase price before or on delivery. Failure to comply with these rules may cause any deposit to be forfeited, lots uncleared after four days may be resold by public or private sale and any deficiency shall be made good by the defaulters.  
(c) Agents bidding on behalf of undisclosed clients do so on their own responsibility both for payment and safe delivery of the lots.
3. The Auctioneers reserve the right to bid on behalf of Clients and Vendors.
4. The buyer of any lot becomes responsible for it from the time it is "knocked down". Lots purchased on behalf of mail bidders will be forwarded by the most practical method, all charges incurred to be borne by the purchaser.
5. The Auctioneer shall not be liable for any omissions or errors made by clients when sending their instructions to bid.

All purchases made by residents in the Dollar Area must be paid for in Dollars at the controlled rate of exchange, or by Sterling Draft.

Valuations are prices which a collector might expect to pay in the existing state of the market. The finer points of quality are often indicated by these valuations.

*For Special Conditions of Sale applying to  
the Burrus Collection — see inside front cover.*

★ ★ ★

# The Piccadilly Hotel

will house the London Burrus Auctions in their Prince Edward Suite where over one hundred buyers can be comfortably seated at tables.

This magnificent hotel, with entrances in both Piccadilly and Regent Street, is just round the corner from Eros, the world famous statue in Piccadilly Circus, the very hub of London.

Buyers attending the Burrus sales can conveniently lunch at the Louis XIV Restaurant and those from overseas or out of town may enjoy the convenience and comfort of the apartments from 70/- for a single room with a private bathroom to £8 for a double room and sitting room.

Requests for reservations should be addressed to

**The Manager, Piccadilly Hotel, London, W.1.**

Telephone: REGent 8000.

Telegrams: Piquidillo, London.

BURRUS  
13/20 OCT. 62  
FRENCH COLONIES

BURRUS  
13/20 OCT. 62  
ROUMANIA

BURRUS  
9 NOV 1962  
CANADA

BURRUS  
10 NOV 1962  
VENEZUELA

BURRUS  
12/16 NOV. 62  
HUNGARY

BURRUS  
12/16 NOV. 62  
SERBIA

BURRUS  
12/16 NOV. 62  
SWEDEN

Prenez date  
Daten zu Merken  
Make it a date

BURRUS  
27 NOV. 62  
CAPE OF GOOD HOPE

BURRUS  
28 NOV. 62  
AUSTRALIA

BURRUS  
29 NOV. 62  
BRITISH EMPIRE

BURRUS  
29 NOV. 62  
WEST INDIES

BURRUS  
29 NOV. 62  
NEW BRUNSWICK

BURRUS  
29 NOV. 62  
NOVA SCOTIA

BURRUS  
30 NOV. 62  
GRECE-EGYPT

Willy Balasse, 45a Rue du Midi, Brussels.	13 - 20 Oct.
Fred Rich, 55 West 42nd St., New York 36.	9 - 10 Nov.
Edgar Mohrmann, Speersort 6, Hamburg 1.	12 - 16 Nov.
Robson Lowe Ltd., 50 Pall Mall, London, S.W.1.	27 - 30 Nov.





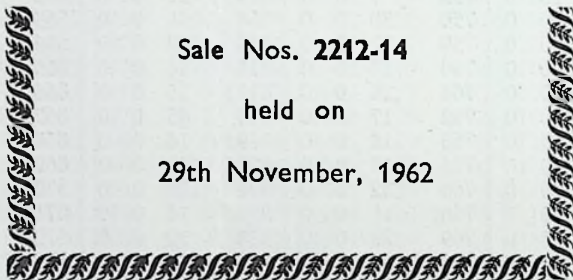
LIST OF

**PRICES REALISED**

(Lots not included in this list either failed to fetch the reserve,  
were withdrawn or did not bring a bid)

at the

**“BURRUS” BRITISH EMPIRE  
SPECIALISED STAMP SALES**



Sale Nos. 2212-14

held on

29th November, 1962

at the Piccadilly Hotel by

**ROBSON LOWE LTD.  
50 PALL MALL  
LONDON  
S.W.1**

SALES, 29th NOVEMBER, 1962

# REALISATIONS

of the

"Burrus" British Empire, 29th November, 1962

Lot	£	s.	d.	Lot	£	s.	d.	Lot	£	s.	d.	Lot	£	s.	d.
680	32	0	0	730	24	0	0	797	6	10	0	848	21	0	0
681	7	10	0	732	25	0	0	798	9	0	0	849	16	0	0
682	17	0	0	735	42	10	0	799	28	0	0	850	17	0	0
683	14	0	0	739	14	0	0	800	50	0	0	851	22	0	0
684	12	0	0	740	22	0	0	801	95	0	0	852	24	0	0
685	7	0	0	741	15	0	0	802	32	0	0	853	15	0	0
687	32	0	0	742	22	0	0	803	36	0	0	854	26	0	0
688	55	0	0	743	22	0	0	804	5	0	0	855	9	0	0
689	28	0	0	744	47	10	0	805	20	0	0	856	13	0	0
690	15	0	0	745	75	0	0	807	36	0	0	857	20	0	0
691	10	0	0	747	18	0	0	809	20	0	0	858	7	10	0
692	40	0	0	749	47	10	0	810	11	0	0	859	13	0	0
693	60	0	0	751	30	0	0	811	24	0	0	860	21	0	0
694	7	0	0	752	10	0	0	812	40	0	0	861	7	0	0
695	37	10	0	755	7	0	0	813	22	0	0	862	42	0	0
696	60	0	0	758	30	0	0	814	26	0	0	863	11	0	0
697	28	0	0	759	17	0	0	815	12	0	0	864	15	0	0
698	75	0	0	760	18	0	0	816	14	0	0	865	55	0	0
699	14	0	0	761	26	0	0	817	26	0	0	866	8	0	0
700	85	0	0	762	17	0	0	818	45	0	0	867	50	0	0
701	15	0	0	763	18	0	0	819	14	0	0	868	8	10	0
702	75	0	0	764	17	0	0	820	30	0	0	869	42	0	0
703	210	0	0	765	32	0	0	821	70	0	0	870	45	0	0
704	50	0	0	766	11	0	0	822	14	0	0	871	8	10	0
705	11	0	0	769	28	0	0	823	30	0	0	872	30	0	0
706	80	0	0	770	28	0	0	824	28	0	0	873	19	0	0
707	15	0	0	771	28	0	0	826	10	0	0	874	6	10	0
708	8	0	0	772	4	10	0	827	11	0	0	875	26	0	0
709	25	0	0	775	80	0	0	828	13	0	0	876	6	10	0
710	16	0	0	776	38	0	0	829	30	0	0	877	29	0	0
711	6	0	0	777	42	10	0	830	18	0	0	878	7	10	0
712	10	0	0	778	33	0	0	831	36	0	0	879	70	0	0
713	6	10	0	779	13	10	0	832	28	0	0	880	17	0	0
714	14	0	0	780	52	10	0	833	30	0	0	881	19	0	0
715	16	0	0	782	19	0	0	834	80	0	0	882	8	0	0
716	10	10	0	783	7	0	0	835	310	0	0	883	4	0	0
718	11	0	0	784	6	0	0	836	260	0	0	884	8	0	0
719	19	0	0	785	12	0	0	837	25	0	0	885	11	0	0
720	34	0	0	786	5	10	0	838	34	0	0	886	11	0	0
721	38	0	0	788	5	0	0	839	36	0	0	887	13	0	0
722	15	0	0	789	11	0	0	840	13	0	0	888	18	0	0
723	19	0	0	790	10	0	0	841	19	0	0	889	26	0	0
724	55	0	0	791	7	0	0	842	5	10	0	890	32	0	0
725	50	0	0	793	11	0	0	843	20	0	0	891	130	0	0
726	22	0	0	794	38	0	0	844	36	0	0	892	110	0	0
727	12	0	0	795	25	0	0	846	24	0	0	893	10	0	0
729	7	0	0	796	9	10	0	847	22	0	0	894	13	0	0

## SALES, 29th NOVEMBER, 1962

Lot	£	s.	d.	Lot	£	s.	d.	Lot	£	s.	d.	Lot	£	s.	d.
895	8	0	0	952	19	0	0	1010	28	0	0	1081	110	0	0
897	46	0	0	953	34	0	0	1011	18	0	0	1082	70	0	0
899	250	0	0	954	8	10	0	1012	11	0	0	1083	110	0	0
900	200	0	0	955	9	10	0	1013	9	0	0	1084	85	0	0
901	42	0	0	956	13	0	0	1014	18	0	0	1085	85	0	0
902	12	0	0	957	16	0	0	1015	4	15	0	1090	160	0	0
903	26	0	0	958	50	0	0	1023	14	0	0	1091	90	0	0
904	4	10	0	959	7	0	0	1024	8	10	0	1092	400	0	0
905	4	0	0	960	19	0	0	1026	19	0	0	1093	140	0	0
906	11	0	0	961	4	15	0	1027	70	0	0	1095	130	0	0
907	32	0	0	962	3	15	0	1029	13	0	0	1096	30	0	0
908	11	10	0	963	32	0	0	1030	10	0	0	1097	20	0	0
909	9	0	0	964	60	0	0	1031	7	10	0	1098	5	0	0
910	7	0	0	965	15	0	0	1032	12	0	0	1099	375	0	0
911	10	0	0	967	7	10	0	1033	8	0	0	1101	300	0	0
912	9	0	0	968	2	15	0	1034	16	0	0	1102	450	0	0
913	5	10	0	970	26	0	0	1035	14	0	0	1103	230	0	0
914	4560	0	0	971	13	0	0	1037	10	10	0	1104	225	0	0
915	22	0	0	972	13	0	0	1038	11	0	0	1105	350	0	0
916	11	0	0	973	25	0	0	1039	11	0	0	1106	110	0	0
917	18	0	0	974	70	0	0	1040	20	0	0	1107	45	0	0
918	12	0	0	975	19	0	0	1041	22	0	0	1108	11	0	0
919	10	0	0	976	12	10	0	1042	19	0	0	1109	11	0	0
920	14	0	0	977	8	10	0	1043	13	0	0	1110	10	0	0
921	12	0	0	979	7	0	0	1044	25	0	0	1111	25	0	0
922	11	0	0	981	6	10	0	1045	34	0	0	1112	9	0	0
923	13	0	0	982	77	10	0	1046	21	0	0	1113	13	0	0
924	3	10	0	983	11	0	0	1047	20	0	0	1116	23	0	0
925	1550	0	0	986	3	0	0	1048	13	10	0	1117	8	0	0
926	19	0	0	987	4	10	0	1049	19	0	0	1118	11	0	0
927	5	5	0	988	4	5	0	1050	5	0	0	1119	13	0	0
928	20	0	0	989	27	0	0	1051	26	0	0	1120	7	10	0
929	5	0	0	990	9	10	0	1052	7	10	0	1121	17	0	0
930	6	0	0	991	5	10	0	1053	4	10	0	1122	100	0	0
931	7	0	0	992	20	0	0	1054	23	0	0	1123	23	0	0
933	6	0	0	993	6	5	0	1055	7	0	0	1124	40	0	0
934	17	0	0	994	60	0	0	1056	7	10	0	1125	32	0	0
935	4	5	0	995	4	0	0	1057	6	0	0	1126	95	0	0
936	3	10	0	996	120	0	0	1060	19	0	0	1127	37	10	0
937	300	0	0	997	9	10	0	1061	21	0	0	1128	475	0	0
938	22	0	0	998	22	0	0	1062	12	0	0	1129	120	0	0
939	15	0	0	999	21	0	0	1063	12	10	0	1130	40	0	0
940	14	0	0	1000	29	0	0	1065	15	0	0	1132	28	0	0
941	60	0	0	1001	8	10	0	1066	20	0	0	1133	62	10	0
942	21	0	0	1002	6	10	0	1067	67	10	0	1135	300	0	0
943	12	0	0	1003	18	0	0	1069	200	0	0	1136	62	10	0
944	9	10	0	1004	5	10	0	1071	1000	0	0	1137	13	0	0
945	12	10	0	1005	8	0	0	1072	46	0	0	1139	320	0	0
948	14	0	0	1006	29	0	0	1073	60	0	0	1140	20	0	0
949	9	10	0	1007	95	0	0	1075	52	10	0	1142	1100	0	0
950	21	0	0	1008	30	0	0	1076	47	10	0	1143	200	0	0
951	13	10	0	1009	46	0	0	1077	32	0	0	1144	190	0	0

SALES, 29th NOVEMBER, 1962

---

Lot	£	s.	d.	Lot	£	s.	d.	Lot	£	s.	d.	Lot	£	s.	d.
1149	4	10	0	1164	110	0	0	1174	85	0	0	1189	15	0	0
1150	75	0	0	1165	36	0	0	1175	120	0	0	1190	16	0	0
1151	42	10	0	1166	575	0	0	1176	23	0	0	1193	33	0	0
1156	5	0	0	1167	42	10	0	1178	24	0	0	1194	7	10	0
1157	60	0	0	1168	14	0	0	1180	4	0	0	1195	13	0	0
1158	14	0	0	1169	270	0	0	1181	3	10	0	1196	5	10	0
1159	120	0	0	1170	24	0	0	1183	7	10	0	1198	16	0	0
1161	850	0	0	1171	150	0	0	1184	5	0	0	1199	7	10	0
1162	775	0	0	1172	260	0	0	1186	23	0	0				
1163	480	0	0	1173	210	0	0	1187	17	0	0				
															End of Sale.

---

*D. Wood & Son, Printers, Perth*

---