



2273

2007

2008

2143

# BRITISH WEST INDIES

INCLUDING BERMUDA AND THE FALKLAND ISLANDS

THURSDAY, 29th MAY, 1969

ROBSON LOWE LTD., 50 Pall Mall, London, S.W.1

Sale Nos. 3186-87



2039

2483

Catalogue 10/-



2186



2183

**CONDITIONS OF SALE** Every lot in our Auctions is offered subject to the "Philatelic Auctioneers' Standard Terms and Conditions of Sale" (of which follows a Synopsis) and to the Special Conditions printed below. A copy of the former can be obtained free on request from our offices. Notice. Robson Lowe Ltd., the auctioneers, exercise the utmost care to ensure that all statements as to cancellation, centring, colour, condition, date of issue or of postal markings, gum, margins, paper, perforation, printing, provenance, quality, sheet position, status, usage and watermark, etc., in the lot descriptions are reliable and accurate and that each item, unless the contrary is indicated, is genuine and authentic. The statements, however, are not intended to be, are not and are not to be taken to be statements of fact or representations of fact. They are statements of the opinion of the auctioneers, and attention is particularly drawn to clause 6 of the Philatelic Auctioneers' Standard Terms and Conditions of Sale below.

#### Synopsis of Philatelic Auctioneers' Conditions of Sale.

1. The purchaser to be the highest bidder. Any dispute arising as to the highest bidder to be determined by the Auctioneer who may re-offer any disputed lot.
2. (a) The bidding and advances to be regulated at the Auctioneer's discretion.  
(b) If so required, buyers to give their names and addresses and/or to pay down the whole or part of the purchase price at the sale. Failure to comply with these rules in respect of any lot entitles the Auctioneer to re-sell the lot, any deficiency being made good by the defaulter.  
(c) Agents bidding on behalf of undisclosed clients do so on their own responsibility both for payment and safe delivery of the lots.
3. The Auctioneer reserves the right to bid on behalf of Clients and Vendors, but shall not be liable for any errors or omissions in executing instructions to bid.
4. The buyers of each lot to be responsible for it from the time it is "knocked down". Payment to be made in full before delivery and the lot to be removed by United Kingdom buyers within seven days and by Overseas buyers within a reasonable time. Failure to pay in full within such period entitles the Auctioneer to re-sell the lot, any deficiency being made good by the defaulter.
5. The Auctioneer shall not be liable for any default of the Purchaser or Vendor.
6. (a) Each lot is sold as genuine and correctly described.  
(b) The purchaser to be at liberty to reject the lot by giving written notice within seven days (or, in the case of Overseas buyers, within a reasonable time of the date of the sale) if he proves that the lot is not genuine or is incorrectly described and returns the lot within thirty days of the sale (or within such longer period as the Auctioneer may in his discretion allow). The onus of proving a lot to be not genuine or wrongly described lies with the purchaser; proof of the inability of an Expert Committee to express a definite opinion will not discharge this onus.  
(c) No lot to be rejected if, subsequent to the sale, it has been immersed in water or treated by any other process unless the Auctioneer's permission to subject the lot to such immersion or treatment has first been obtained.  
(d) The above provisions of this clause do not apply to mixed lots and collections containing undescribed stamps.

#### SPECIAL CONDITIONS

1. Failure on the part of a bidder or purchaser to comply with the conditions, a synopsis of which is printed above, entitles the Auctioneer to cause the bidder or purchaser to forfeit any deposit held. Any uncleared lots after seven days may be re-sold by public or private sale and any deficiency shall be made good by the defaulters.
2. Lots purchased on behalf of mail bidders will be forwarded by the most practical method at the risk of the purchaser who shall bear all charges incurred.
3. The Auctioneer shall not be liable for any omission or errors made by clients when sending their instructions to bid.
4. If a purchaser wishes to obtain an expert opinion on any lot (not being a mixed lot or a collection containing undescribed stamps), the Auctioneer may, if so requested in writing within seven days of the date of the sale (or in the case of overseas buyers within seven days of receipt of the lot), extend the period within which the lot may be rejected to not later than two months from the date of the sale. Where such extensions are requested the purchaser shall give notice in writing to the Auctioneer and submit the lot to a mutually acceptable expert body. Extensions necessitating more than two months delay from the date of the sale will, unless the circumstances are exceptional, only be granted if the permission of the vendor for a longer extension has been obtained by the Auctioneer prior to the sale. The Auctioneer may require the lot to be paid for pending the receipt of the expert opinion, the cost of which is the liability of the buyer. If an extension is required on an item which already possesses a certificate dated within ten years of this sale, written notice must be given at least two weeks prior to the auction in order that the owner's permission for further expertisation may be obtained.
5. The right to refuse admission to the Auction Room is reserved.
6. Bids from minors will not be accepted unless accompanied by a full cash deposit or by suitable guarantees. New clients must send references in advance or a full cash deposit.
7. All purchases made by residents in the Dollar Area must be paid for in Dollars at the controlled rate of exchange or by Sterling Draft.
8. Interest at 1% for the first month or part of a month and 1½% per month for any further credit, is charged on all auction accounts if payment is not made within seven days of the date of the Sale (Overseas Buyers within seven days of the receipt of the invoice). When paying in any currency other than sterling, 1% should be added to the account to allow for bank transfer costs.
9. Stamps described as having defects are not returnable on account of their condition. Stamps cannot be returned on account of the centering or the amount of margin when such stamps are illustrated.
10. Any dispute as to the meaning or operation of these Special Conditions or of the Conditions, a synopsis of which is printed above, shall be determined conclusively by the Auctioneer. Valuations are fair values that one might expect to pay on the market today. The finer points of quality are often indicated by these valuations.

DESCRIPTIONS BY ARTHUR GINN

**A ROBSON LOWE  
SPECIALISED STAMP SALE**

35

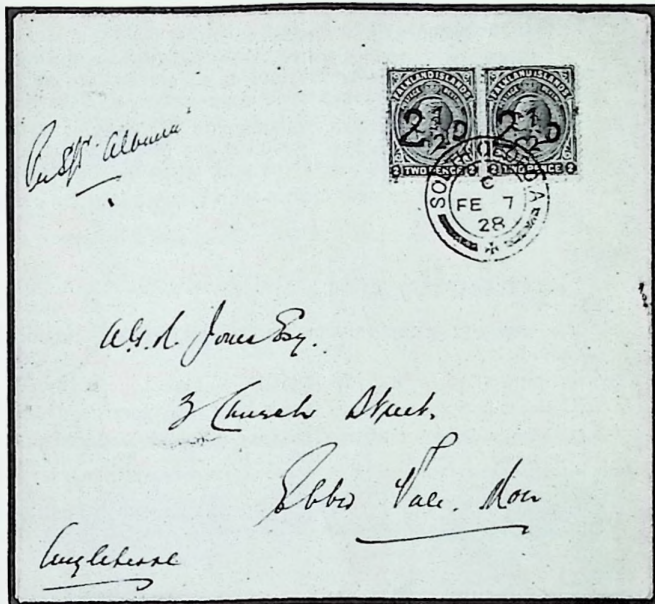
THURSDAY, 29th MAY, 1969,  
at 11.00 and 12.00 hrs.

in the auction rooms of  
**ROBSON LOWE LTD.**

50 Pall Mall, London, S.W.1.

Telephone 01 - 839 4034      Telex 915410  
Inland Telegrams — Stamps London Telex  
Overseas Cables — Stamps London S.W.1

Outstanding items and sections in this auction which includes a further portion of the fine collection formed by the late Godfrey Mellor of Huddersfield are Anguilla provisionals; Bahamas; Barbados; Bermuda with 1968 Olympic 3d. error country and value omitted; British Guiana; Cayman Islands with 1968 Christmas ½d. variety country omitted; Falkland Islands with two 1928 2½d. provisional covers; Grenada; Jamaica; Montserrat; St. Kitts with a fine lot of 1932 Tercentenary values; St. Lucia; St. Vincent occupying 135 lots; Trinidad commencing with a "Lady McLeod" cover and Virgin Islands.



2226

Regular Stamp Auctions held in London, Bournemouth and Basle  
Proprietors of "The Philatelist" and "The Philatelic Journal of Great Britain"  
Publishers of "The Encyclopaedia of British Empire Postage Stamps" and many  
other standard philatelic works

Overseas Agents —

Australia T. E. Ross, 1st Floor, The Block Arcade,  
100 Elizabeth St., Melbourne, Victoria 3000

Bermuda G. Osborn, Robson Lowe (Bermuda) Ltd.,  
Box 88, Harrington Sound Post Office, Bermuda

India Jal Cooper, Standard Building,  
Dr. Dadabhoy Naoroji Road, Bombay

Italy Adriano Landini, Via del Carmine 1,  
Milan 20121

Norway F. C. Moldenhauer, Hakansgt. 16, Bergen

South Africa John H. Wicks, 39 Loop St.,  
Pietermaritzburg, Natal

Spain Nestor Jacob, Hobby S.A., Rodriguez,  
San Pedro 12, Madrid 15

Sweden Bertil Agerfeldt, Odengatan 23  
Stockholm 'O', and Nils Farnström,  
Oregrundsgatan 10, tr. 4, 11538 Stockholm

U.S.A. (West Coast) Lt. Cdr. William H. Wells,  
P.O. Box 575, San Leandro, California 94577

Members of the "UNCOMMON MARKET" partnership with Jacques Robineau of France,  
J. L. Van Dieten of Holland and Urs Peter Kaufmann of Switzerland.

Robson Lowe Ltd. are in association with Christie's, 8 King Street, St. James's,  
London, S.W.1.

Christie's Overseas Companies —

Christie, Manson and Woods (U.S.A.),  
867 Madison Avenue, New York, 10021, N.Y.

Christie, Manson and Woods (International) S.A.,  
16 Rue du Marché, Geneva 1204, Switzerland

# Viewing Arrangements

Lots will be on view in the auction rooms of Robson Lowe Ltd. at 50 Pall Mall

Monday, 19th May, until Friday, 23rd May, 1969	...	...	...	10.00 - 17.00 hrs.
Tuesday, 27th May, and Wednesday, 28th May	...	...	...	10.00 - 17.00 hrs.
Thursday, 29th May	...	...	...	10.00 - 11.00 hrs.

Lots of a suitable size can be sent through the post for inspection, postage and insurance both ways to be borne by the client.

Clients who cannot conveniently visit the auction rooms at 50 Pall Mall on the viewing days quoted, may view the lots at an earlier date by making an appointment, either by letter or telephone, giving three days' notice, and the time and lots required.

By observing these arrangements it makes it possible for the Inspection Clerk to reserve the lots required (which might otherwise be with a postal viewer) and to have them available on the mezzanine floor when the clients call.

With regard to new clients who request lots for postal viewing, references should be sent in advance.

## Symbols, etc.

The use of symbols following the lot numbers is for the convenience of buyers and indicates:

⊕ unmounted mint   ★ unused   ○ used   ☒ cover   △ on piece   ⊞ block of four  
⊞ block larger than four   Ⓐ Air Mail   ⊙ "Specimen"   ⊖ "Cancelled"   Ⓔ Essay   Ⓟ Proof  
Catalogue values and numbers are those of Gibbons 1969 edition; where other catalogues are used they are mentioned by name. The abbreviation "c.d.s." indicates circular date-stamp.

The number in brackets at the end of each description is the number of stamps (or items) in the lot.

## Extensions

Extensions should be requested at the time of making a bid. Overseas buyers should complete the special form provided and return it to the auctioneer who will then submit the lot to the B.P.A. Expert Committee. Inland buyers must be responsible for obtaining an expert opinion after notifying the auctioneers of their intention on the special form. In no case will extensions be given for B.P.A. or other acceptable expert opinions that necessitate more than two months delay from the date of the sale. Should the buyer (or ourselves on behalf of an overseas buyer) fail to secure such opinion within two months, the right to return the lot will be forfeited. The only exception is when the permission of the vendor for a longer extension has been obtained prior to the sale. All costs connected with expert opinions are the liability of buyers. If an extension is required on an item which already possesses a certificate dated within 10 years of the sale, written notice must be given to us at least two weeks prior to the auction in order that the owner's permission for further expertisation may be obtained.

## Sterling Currency Conversion

Overseas buyers will find this table of use when converting their bids into sterling equivalents. These are approximate and this table should not be used for estimating a payment owing to the slight variations in the exchange rate and the cost of bank charges.

Austria—schilling	61.75	Germany—deutschemark	9.59	Portugal—escudo	68.25
Belgium—franc	120	Holland—florin/guilder	8.65	Spain—peseta	167
Canada—dollar	2.57	Italy—lira	1500	Sweden—krone	12.35
Denmark—krona	17.95	Japan—yen	855	Switzerland—franc	10.27
France—franc	11.84	Norway—krone	17.06	U.S.A.—dollar	2.40

## First Session at 11.00 hrs.

Lot	Description	Valuation
2001 ⑤	A selection of Specimen stamps including British Honduras 1882-87 1/- grey and 1891-98 \$5; Cayman Isles 1908 10/-; Grenada 1902 CA 1d. to 10/-; 1908 5/- and 10/- and 1913 10/-; Leeward Isles 1902 5/- and 1912-22 5/-; Montserrat 1908-13 5/- and 1916-23 5/-; St. Vincent 1904-11 £1; Trinidad 1896-1900 10/- and £1 and Virgin Isles 1899 5/- and 1904 5/-; some rubbed or with other slight faults. (30)	£8
2002 ★	A selection of various K.G. VI and Q.E. II issues including Antigua 1938-49 set to £1 and 1953-61 set to \$4.80; Barbados 1938-47 ½d. to 5/- with perf. varieties including ½d. perf. 14 and 1d. scarlet perf. 13½×13; 1939 Tercentenary set; 1950 set to \$2.40 and 1953-57 to \$2.40; Cayman Is. 1938-47 to 10/- with shades and perf. varieties; 1950 to 10/- and 1953-59 to £1; Dominica 1938-47 to 10/-; 1951 ½c. to \$2.40 and 1954 ½c. to \$2.40 also Virgin Is. 1938 ½d. to £1; 1951 6c. to \$1.20; 1952 1c. to \$4.80 and 1956 ½c. to \$4.80. All fine mint. (258)	£30
<b>Anguilla</b>		
2003 ○	1967 Stamps of St. Kitts Nevis overprinted ½c., 1c., 2c., 3c., 6c., 10c. pair and 15c., all superb. Cat. £72. (8)	£30
2004 ★ <sup>(B)</sup>	— 3c. a mint block of seven, the first stamp showing variety "Anguilla" ½ mm. to left of normal [17] in the setting. Photo	£50
2005 ☒	— 10c. multicoloured a fine strip of three and single used on envelope to London	£12
2006 ○	— 50c. superb used. Cat. £200. Photo	£75
2007 ★	— \$1 greenish-yellow and blue mint, very slight gum disturbance. Very rare. Photo in colour on front cover	£60
2008 ○	— \$5 multicoloured superb used. Cat. £180. Photo in colour on front cover	£65



2006

2004

## Antigua

2009 ★	1862 unwatermarked rough perf. 14 to 16 6d. blue-green fine unused marginal, a few perfs. short at top. Rare. Cat. £70. Photo 4	£40
2010	1863-67 Small Star rough perf. 14 to 16 1d. shades (5, two unused), 6d. dark green and 6d. yellow-green; 1872 CC perf. 12½ 1d. lake, 1d. scarlet unused and 6d. (2, used); 1876 CC perf. 14 1d. and 6d. (2); 1879 CC 4d. blue (2, used) and 1884 CA perf. 12 1d. used; fair to fine. Cat. £63. (17)	£21

Lot	Description	Valuation
	<b>Antigua—contd.</b>	
2011 ★	1876 CC perf. 14 1d. lake; 1882 CA perf. 14 ½d. (3) and 2½d. also 1884-86 CA perf. 14 1d. carmine-red a mint strip of four and single and 1d. rose, 2½d. (4, with a strip of three), 4d. (4, with a strip of three) and 6d. deep green; fair to fine unused or mint. Cat. 590/-. (20)	£6
2012 ★	1903-09 CC ½d. to 5/- including 1d. on blued paper, a fine mint set. (11)	£12
2013 ★	— 2/- and 2/6 fine mint	£5
2014	1908-17 MCA ½d. to 2/- with shades; 1913 MCA 5/- grey-green and violet; 1921-29 MCA 3d. to 1/- and Script ½d. to 4/- with colour changes, all mint. (39)	£10
2015 ★	1908-17 MCA ½d. to 2/- with shades, 1913 5/- and War Stamps (6), mint but some climatically toned also 1921-29 MCA 3d. to 5/- and Script values to 4/- and 1935 Jubilee set all mint. (48)	£17
2016 ★	1921-29 MCA 3d. to 5/- and Script values to 4/-, all mint. Cat. 294/-. (16)	£6
2017 ★	1932 Tercentenary ½d. to 5/- mint but some values toned and the 5/- has short perf. at top. Cat. £40. (13)	£15
2018 ★	1935-68 a complete mint collection all very fine and attractively written up. (168)	£11



2009

Do you enjoy receiving these catalogues? If so, see that your subscription is paid for the year.

### Bahamas

2019 ★	1859 thin paper imperforate 1d. dull lake a very fine mint pair	£6
2020 ○	1861 unwatermarked rough perf. 14 to 16 1d. lake and 6d. grey-lilac and 1862 perf. 13 1d. brown-lake, all very fair. Cat. £62	£10
2021 ★	1862 unwatermarked perf. 13 1d. lake fine mint. Cat. £40. Photo	£12
2022 ○	— 4d. dull rose fine, perfs. at foot slightly clipped. Cat. £28	£7
2023 ○	— 6d. lilac lightly cancelled, head clear, a few perfs. ragged at left. Cat. £42. Photo	£16
2024 ★	1863-80 CC perf. 12½ 1d. shades (4), 4d. dull rose and 6d. deep violet, good to fine mint or unused	£15
2025 ○	— 4d. dull rose (3), 6d. lilac and 6d. deep violet (2) fair to fine, one 4d. with some clipped perfs.	£14
2026 ★	— 4d. bright rose fine unused, part gum and showing border watermark. Photo	£8
2027 ○	— 4d. brownish-rose and 6d. deep violet, both very fine	£8
2028 ○	1863-80 CC perf. 14 1d. shades (2), 4d. shades (2), 1/- on thin paper and 1/- on thick paper, good to very fine. (6)	£7
2029 ★	— 4d. dull rose very fine fresh unused with some original gum. Cat. £60. Photo	£20
2030 ○	1882 CA perf. 12 1d. a pair on small piece and 4d. (2) also perf. 14 1d., 4d., and 1/-; fine to very fine. (7)	£14
2031 ★	1884-98 CA perf. 14 1d. shades (4), 2½d. shades (4), 4d. (2), 6d. (2), 1/-, 5/- and £1 all fine fresh mint. (15)	£35
2032 ★	— 6d. mauve; 1906-11 MCA ½d., 1d. and 2½d.; 1912-19 MCA 2d. to 1/-; various Staircase type to 2/- Script (2); War Stamps (11) and 1921-29 Script values to 5/- with some shades; all mint. Cat. 443/-. (42)	£7

Lot	Description	Valuation
<b>Bahamas 1884-98—contd.</b>		
2033	— 5/- sage-green mint also 1912-19 MCA ½d. to £1 with shades of values to 1/- and 5/- and £1 fiscally cancelled. (18)	£30
2034 ★	— 5/- sage-green and £1 Venetian red both mint, the latter with tiny perforation fault at top left. Cat. £52. Photo	£30
2035 ○	— ditto, with scarce Inagua c.d.s. cancellation. Photo	£8
2036 ★	1902 CA 2½d., 4d., 6d., 1/- (2) and 5/-; 1903 CC 5d., 2/- and 3/- and 1906-11 MCA 2½d. and 6d., all fine mint. Cat. 667/-. (11)	£10
2037 ○	— £1 green and black, tiny corner thinning and slight brown marks at foot; very scarce used. Cat. £100. Photo in colour on back cover	£50
2038 ★	1912-19 MCA ½d. to 5/- with both 2½d. and both 5/- also 1916-19 MCA 1d., 3d. both papers and 5d. to 3/-; all fine mint. Cat. 435/-. (16)	£7
2039 ☉☐	— £1 dull green and black a superb mint unmounted block. Photo in colour on front cover	£90
2040 ★	1918 (Feb.) War Tax 1/-; 1920 Peace 1/- myrtle-green; 1921-29 Script 2/-, 3/- and 5/- and Special Delivery 1916 CC 5d. black and orange; all fine mint. Cat. £17. (6)	£6
2041 ★	1921-29 Script £1 green and black, very fine mint. Cat. £40. Photo	£25
2042 ★	1930 Tercentenary 1d. to 3/- and 1942 Elcuthera Tercentenary ½d. to £1 all fine mint. (21)	£6
2043 ★	1931 Script 2/- (4) and 3/- (4) including the scarcer shades; 1938-52 ½d. to £1; 1942 Columbus ½d. to £1 with both shades of 2/- and 3/-; 1948 ½d. to £1; 1954 ½d. to £1; 1959 1d. to 10d.; 1962 8d. and 10d. all fine mint. (86)	£15
2044 ☉	1964 Shakespeare 6d. turquoise also Dominica 15c. bright purple both variety watermark inverted, unmounted mint	£18



### Barbados

2045 ○	1852-55 blued paper imperforate ½d. yellow-green, ½d. deep green (2), 1d. blue shades (4) and 4d. brownish-red all used, fair to fine and 1d. slate-blue mint. (9)	£42
2046 ★	— ½d. deep green and 4d. brownish-red; 1855-57 white paper ½d. green (2); 1858 imperforate 1/- black; 1874 Large Star ½d. deep green; 1875-78 CC perf. 12½ ½d. and 4d. and perf. 14 ½d., 1d., 6d. (2) and 1/- all good to fine unused or mint. (13)	£50
2047 ★	— ditto, and 1875-78 CC perf. 14 6d. chrome-yellow both unused with large part original gum	£9
2048 ★	— ditto, 1d. blue a mint strip of five and a single and 4d. brownish-red also prepared for use but not issued (no value) slate-blue a pair; all fine mint. (10)	£16
2049 ★	— 1d. blue a block of four and 1d. deep blue a pair; fine mint	£10
2050 ○	— 4d. brownish-red, very fine. Photo	£25

UNCOMMON MARKET AUCTIONS are held in Basle every Autumn and Spring. Fine quality properties can be accepted for sale ALL THE YEAR ROUND. Special commission rate only 12½%. IF YOU HAVE STAMPS TO SELL write today to ROBSON LOWE LIMITED, 50 Pall Mall, London, S.W.1.

Lot	Description	Valuation
2051	○ 1855-57 white paper imperforate ½d. yellow-green a pair and three singles and ¼d. green (3, one on entire); poor to good, most with faults. (8)	£25
2052	○ — 1d. pale blue and 1d. deep blue shades in pairs (4), fair to fine, all but one are a little cut into. (8)	£20
2053	○ — ditto, very fine singles all with full margins. (5)	£15
2054	○ — ditto, four very fine shades with large margins, one with numeral "10" cancellation	£15
2055	— ditto, one mint and eight used shades, fair to fine. (9)	£17
2056	Ⓟ 1858 unwatermarked imperforate 6d. a cut down die proof (27×33 mm.) in dark blue on white paper. Photo	£25
2057	○ — 6d. pale rose-red and 1/- black (2) fine to very fine, the first just touched in one place	£13
2058	○ — 6d. shades (4) and 1/- shades (4) fair to fine with a variety of cancellations. (8)	£27
2059	△ — 6d. deep rose-red fine on large piece. Photo	£20
2060	Ⓟ — 1/- plate proof in black on white paper, fine. Photo 5	£10
2061	○ — 1/- brown-black (2) and 1/- black, good to fine and lightly cancelled	£15



2059



2056

2083

2062	★ 1860 unwatermarked pin-perf. 14 ½d. yellow-green fine unused without gum. Cat. £100. Photo 5	£20
2063	○ — 1d. pale blue, three shades, good to fine	£12
2064	★ 1861 unwatermarked, clean-cut perf. 14 to 16 ½d. deep green and 1861-70 rough perf. 14 to 16 ½d. shades (11); good to fine unused or mint. (12)	£9
2065	★ 1861-70 unwatermarked rough perf. 14 to 16 ½d. shades (4). 1d. blue, 6d. bright orange-vermilion and 1/- black fair to fine unused or mint, the last shows trace of re-entry at right (6)	£9
2066	★☐ — ½d. deep green, ½d. green and 1/- black each in a fine mint block of four, the last has a few surface marks at foot	£15
2067	★ — ½d. green, ½d. deep green and 1/- black all in mint pairs, the last off centre	£9
2068	○ — ½d. (2), 1d. (3), 4d. (2), 6d. (3) and 1/- (3) good to fine with a variety of shades. (13)	£12
2069	★☐ — ½d. green, a very fine mint block (4×3)	£15
2070	★ — ½d. blue-green a fine mint vertical pair. Photo 5	£12
2071	— 1d. (8, two unused), 4d. (4), 6d. (7) and 1/- (6, one mint) fair to fine with a variety of shades. (25)	£20
2072	★☐ — 1d. blue an unused block (5×4) with some original gum, brown staining at back which hardly affects its appearance. An attractive piece	£30
2073	★ — 4d. dull rose-red and 4d. dull brown-red both fine mint	£10
2074	○ 1870 Large Star rough perf. 14 to 16 ½d. shades (4), 1d. shades (4), 6d. and 1/-; good to fine. (10)	£15
2075	○ 1871 Small Star rough perf. 14 to 16 1d. (4), 4d. (3), 6d. (2) and 1/- (3) good to fine, most with c.d.s. cancellations. (12)	£13
2076	○ — 4d. dull rose-red: 1872 Small Star perf. 11 to 13×14½ to 15½ ½d. and 4d.; 1874 Large Star perf. 14 ½d. deep green; 1875-78 CC perf. 12½ 1/- violet and perf. 14 4d. and 6d.; all fine. Cat. 495/-. (7)	£9



Lot	Description	Valuation
2077 ○	1872 Small Star clean-cut perf. 1d. (5), 6d. and 1/-; perf. 11 to 13×14½ to 15½; 1873 Large Star clean cut perf. 14½ to 15½ ½d. and 1/- (2); all fine to very fine. (11)	£9
2078 ㊦	1873 plate proof of the 6d. in bright orange-vermilion on thin paper watermark Large Star, a block without gum. Photo	£20
2079 ㊦	1873 plate proof of the 3d. in black on white paper, fine. Photo 5	£10



2080 ★	1873 Small Star perf. 14 3d. brown-purple mint and well centred for this stamp, small thin spot in top margin. Cat. £55. Photo 5	£20
2081 ★	— ditto, unused with some original gum, somewhat stained. Photo 5	£16
2082 ○	— ditto, fair to good used examples, one with some perfs. clipped. (4) Cat. £60	£16
2083 ㊦	1873 imperforate plate proofs in black of the 5/- on white paper, large margins, slightly foxed. Photo	£20



2084 ★	1873 Small Star perf. 15½×15 5/- dull rose unused with traces of original gum, thin spot at top right corner. Cat. £75. Photo	£35
2085 ○	— ditto, very fine, well centred and with light c.d.s. Photo in colour on back cover	£28
2086 ○	— ditto, fine, good colour and neatly cancelled. Photo	£25
2087 ○	— ditto, fine with oval cancellation leaving Britannia clear. Photo	£20
2088 ○	— ditto, very neat central c.d.s. without year date, very fine except for one blunt corner. Photo	£20
2089 ○	— ditto, fine colour, a little off centre to top right. Photo	£18
2090 ○	— ditto, very fair, rather heavy cancellation and centred to bottom left. Photo	£15

Lot	Description	Valuation
2091	1874 Large Star perf. 14 $\frac{1}{2}$ d. deep green (5, three unused) and 1d. (6, all used); fair to fine. (11)	£8
2092	Ⓟ 1875-78 plate proofs in black of the $\frac{1}{2}$ d. and 4d. on white paper. Photo 5	£12
2093	Ⓟ — plate proof of the $\frac{1}{2}$ d. in black in a block. Photo 7	£20
2094	○ 1875-78 CC perf. 12 $\frac{1}{2}$ $\frac{1}{2}$ d. (3), 4d. (3), 6d. and 1/- (5) all good to very fine	£15
2095	○ — 4d. and 1/- (7) in similar condition as last	£15
2096	★ 1875-78 CC perf. 14 $\frac{1}{2}$ d. (3), 1d. dull blue and 4d. carmine, all good to fine unused with large part original gum. (5)	£7
2097	— $\frac{1}{2}$ d. to 1/- a very attractive nicely written up collection comprising $\frac{1}{2}$ d. (15, with seven unused), 1d. (16, with three unused), 4d. (11, all used), 6d. shades (10, all used) and 1/- shades (17, one mint but foxed); the used all very fine and including pairs of the 1d., 4d. and 1/- (69)	£36
2098	○ — $\frac{1}{2}$ d. (5), 1d. (8, one used on a damaged front of a soldier's letter), 3d. (2), 4d. (5), 6d. (3) and 1/- shades (6); fair to fine, one 3d. thinned. (29)	£13
2099	○ — $\frac{1}{2}$ d. (2), 1d. (6, with a pair), 3d., 4d. (3), 6d. (2) and 1/- (5) all very fine selected examples. (19)	£8
2100	○ 1878 (Mar.) "Id." on half of 5/- dull rose (S.G. type A) a good lightly cancelled example, small thin spot. Cat. £65. Photo	£20
2101	○ — ditto, a very fine unsevered pair. Photo	£100



2100

2101



2104

2105

2106

2112

2102	★ 1882-86 CA perf. 14 $\frac{1}{2}$ d. both shades, 1d. rose, 1d. carmine (2), 2 $\frac{1}{2}$ d. ultramarine, 3d. deep purple (3) and 3d. reddish-purple, 4d. grey, 4d. pale brown, 4d. deep brown (2), 6d. and 1/- all mint; 1892 $\frac{1}{2}$ d. on 4d. (13, with some minor varieties also five items of postal stationery). (34)	£11
2103	○ — a used selection comprising $\frac{1}{2}$ d. (6), 1d. (6), 2 $\frac{1}{2}$ d. (3), 3d. both shades, 4d. grey (2), 4d. brown (8, one with inverted watermark), 6d. (2) and 1/- (6) also 1892 $\frac{1}{2}$ d. on 4d. (2), mostly fine to very fine. (37)	£7
2104	★ — 5/- bistre very fine mint. Photo	£25
2105	★ — ditto, another fine mint example, very slight foxing at back. Photo	£24
2106	○ — ditto, a fine used example. Photo	£25
2107	★ 1892-99 CA $\frac{1}{2}$ d. to 2/6; 1916-20 $\frac{1}{2}$ d. to 3/- with a few shades of lower values and 1920 Peace $\frac{1}{2}$ d. to 3/- including 1d. Script all very fine mint. (37)	£15
2108	-- $\frac{1}{2}$ d. to 2/6 a mint and used collection with considerable duplication of values to 10d. also 1897-98 Jubilee $\frac{1}{2}$ d. to 2/6 mint and used and on blued paper $\frac{1}{2}$ d. and 1d. used; mostly very fine. (71)	£20
2109	★ 1897-98 Jubilee $\frac{1}{2}$ d. to 5d. and 2/6; 1906 Nelson CC $\frac{1}{2}$ d. to 1/- without 1d. and 1907 MCA 2 $\frac{1}{2}$ d.; 1916 $\frac{1}{2}$ d. to 3/-; 1918 colours changed 4d. (2) and 3/- green and deep violet (2) also 1921-24 MCA 3d. and 4d.; fair to fine unused or mint. Cat. £49. (33)	£14
2110	1903 CA 2/6 violet and green; 1904-05 MCA $\frac{1}{2}$ d. to 2/6 all very fine mint and $\frac{1}{2}$ d. (2), $\frac{1}{2}$ d. (3), 1d. (3), 2 $\frac{1}{2}$ d. (2), 6d. (2), 8d. and 2/6 fine used. (23)	£16
2111	1906 Nelson Centenary CC $\frac{1}{2}$ d. to 1/- mint and used with duplicate used values to 2 $\frac{1}{2}$ d.: 1906 Tercentenary 1d. (5, with a mint pair); 1907 Kingston Relief 1d. on 2d. (22 with varieties); 1907 Nelson MCA $\frac{1}{2}$ d., 2d. and 2 $\frac{1}{2}$ d. mint and used with duplicate 2d. mint and 2 $\frac{1}{2}$ d. used also 1909-10 MCA $\frac{1}{2}$ d. to 1/- mint and used with some duplicates; all fine. (65)	£21
2112	○ 1907 Kingston Relief Fund 1d. on 2d. variety surcharge double, very fine used and scarce. Photo	£40
2113	★ 1909-10 MCA 1/- black on green and 1921-24 MCA 1/- black on green a mint top marginal block of four. (5)	£5

Lot	Description	Valuation
<b>Barbados—contd.</b>		
2114 ★	1912 MCA ½d. to 3/- complete with duplicate 2d.; all mint. (14)	£9
2115 ○	— ½d. to 2/- with a few duplicates; 1916-20 MCA ½d. to 3/- with a few duplicates of values to 1/- and 1918 colours changed 4d. (2) and 3/-; all good to fine used. (48)	£17
2116 ★	1916-20 MCA a fine mint selection with some duplicates of values to 6d.; 1918 colours changed 4d. and 3/- and War Tax stamps (16) all fine mint. (42)	£12
2117 ★	1918 MCA 3/- green and bright violet fine mint	£18
2118 ★	— ditto, mint but off centre to left. Cat. £42	£12
2119	1920 Victory issue a mint and used selection including a mint set to 3/- with duplicate ½d. (2), 1d. (2), 2d., 2½d., 1/-, 2/- and 3/- and mint blocks of four ½d. and 2/- also ½d. to 1/- used and Script 1d. (3, one mint). (42)	£16
2120	1921-24 MCA 3d., 4d. and 1/- mint and used and Script ½d. to 3/- mint and used with a few duplicates; good to very fine. (35)	£12
2121	1925-35 Script ½d. to 3/- a mint selection including 3/- (3) also a used set with some duplicates also perf. 13½×12 varieties mint and used; 1927 Tercentenary 1d. a mint block of four and two used singles and 1935 Jubilee in mint blocks of four and two used sets, one on envelope. (109)	£16
2122 ★	1937-58 a collection including 1937 Coronation set in corner blocks of four, 1938-47 ½d. to 5/- a fine selection including blocks of four of values to 5/- and perforation, shade and other varieties; 1939 Tercentenary set and later to 1958 complete; all fine mint. (267)	£12
2123 ○	1937-52 a good used collection with 1938-47 values to 5/- much duplicated; 1939 Tercentenary set and later to 1952 almost complete. (98)	£8
2124 ★	1938-47 ½d. green perf. 14 and 1d. scarlet perf. 13½×13 both fine mint	£6
<b>Barbuda</b>		
2125 ★	1922 ½d. to 5/- the fine mint set. Cat. £32. (11)	£18
2126 ○	— ditto, a fine used set, the 5/- has very small thin or grease spot. Cat. £38. (11)	£15

## WHY WE CHARGE FOR OUR AUCTION CATALOGUES

Sometimes a collector in Europe asks why we make a charge for our auction catalogues. There are good reasons.

During the past year it cost over £40,000 to print and post all our catalogues, but of this sum we received back only about £5,000 in catalogue subscriptions.

If catalogues were free, at least twice as many people would ask for them. This would increase production costs to such an extent that we should be obliged to charge the buyers commission on their purchases. At present they do not pay such commission when buying at our English sales, but on the Continent the buyer pays at least 10% on the purchase price.

For £5 a subscriber can have for a whole year all our catalogues for sales in England. Alternatively, if he had to pay 10% commission on each purchase, he would be paying £5 for every £50 worth of lots purchased. We have five classes of sale, and if a buyer is only interested in one of them (e.g., Specialised Great Britain, British Empire, Postal History, General), he can have the catalogues for as little as 15s. per annum. Subscriptions to "Other Countries" cost 50s. because there are more sales in this category, but for those who reside outside Europe and who collect two or three countries there is our Busy Buyers' Service.

Our competitors say that our catalogues are the best in the world, and it is interesting to note that many of the special ones published by us during the past 25 years are worth a substantial premium today. We hope to make them still better.

If you are willing to spend £5 to receive over fifty catalogues for sales where you pay no commission as a buyer, then please write to us and we shall be happy to send you a sample catalogue.

Catalogues for auctions in Basle where the 10% surcharge on the buying price is made are sent as part of the above service.

## Bermuda

Lot	Description	Valuation
2127 ★	1875 "One Penny" on 2d. blue mint, a little off-centre. Cat. £50. Photo	£20
2128 ○	— "One Penny" on 3d. yellow-buff fine. Photo	£17
2129 ★	— "One Penny" on 1/- green very fine unused with trace of original gum. Cat. £15. Photo	£7



2130 ★	1880-1921 a small mint selection including 1906-09 MCA 2½d. and 4d., 1910-25 MCA values to 1/- (2), 1918-20 MCA 2/- to 5/-; 1920-21 values to 1/- and 1921 (May) ½d. to 1/- except 2d. (44)	£10
2131 ★	1880-1934 another small mint selection including 1883-96 CA values to 1/-; 1902-04 CA ½d. to 3d.; 1906-09 MCA values to 4d.; 1910-25 MCA values to 1/- (2); 1920-21 MCA ½d. to 1/- and 1922-34 Script values to 1/- with duplicates and shades also 2/6 shades (2), 10/- and 12/6 (one corner blunt). (74)	£12
2132 ★	1922-34 Script 2/6 black and pale orange-vermilion on grey-blue, mint, slight gum disturbance. Cat. £120. Photo	£40
2133 ★	1918-20 MCA 10/- and £1 fine mint. Photo	£40
2134 ★	— 10/- green and red on green fine mint	£10
2135 ★	1922-34 Script values to 6d. also 2/- and 2/6 and 1938-53 2/- shades (2) and 5/- all fine mint. (13)	£5
2136 ★	— 2/-, 2/6, 10/- and 12/6 all fine mint. Cat. £53. Photo	£30
2137 ○	— 10/- green and red on pale emerald fine and lightly cancelled	£10
2138 ★	— 12/6 grey and orange fine mint. Photo	£20
2139 ★	— ditto, a similar lot. Photo	£20
2140 ★	— ditto, another fine mint example. Photo	£20
2141 ○	— ditto, fine used. Photo	£20



Please read the Conditions of Sale and Special Notes for buyers which will be found on the inside front cover.

Lot	Description	Valuation
<b>Bermuda—contd.</b>		
2142 ★	1936-59 a mint collection including 1938-52 1d. to 1/- with colour changes; 1938-53 2/- (4), 2/6 (4), 5/- (3), 10/- (4), 12/6 (2) and £1 (2) with shades and both perforations; 1953-62 ½d. to £1 and later to 1959. (78)	£15



2143

2143 ⊛	1968 Olympic Games issue 3d. variety "3d." and "BERMUDA" omitted superb unmounted mint; very rare. With normal for comparison. Photo in colour on front cover	£300
--------	---	------



2114

### British Guiana

2144 ○	1850-51 12c. blue initialled "E.D.W." cut square, outer line cut into a little on three sides, lightly cancelled and a good average example of this rarity, insignificant thinnings. Cat. £600. Photo	£300
2145 ○	1860 thick paper perf. 12 1c. pale rose and 1862 thin paper perf. 12 1c. brown both fine and lightly cancelled	£20
2146 ○	1861 thick paper perf. 12 1c. reddish brown; 1863-64 perf. 12½-13 8c. carmine cancelled in red and 24c. yellow-green; 1866 perf. 10 2c., 4c. and 12c.; 1875 perf. 15 1c. black and 1881 "1" on 48c. red all used except the 1c. black. Cat. 311/-. (8)	£6
2147 ★	1862 thin paper perf. 12 1c. brown fine mint	£8

IF YOU ARE SENDING STAMPS through the post IT IS IMPORTANT to

- put your own (owner's) name and address inside the package(s)
- pack securely
- label clearly.

Also, insure if property is of sufficient value . . . we can do this at cost, but need to know the estimate value and method of despatch. HELP US TO HELP YOU.



2149

2150

2151

Lot

Description

Valuation

**British Guiana—contd.**

- 2148 ○ 1876 CC perf. compound of 14×12½ 1c. slate very fine £18  
 2149 ○ 1862 type set 1c. rose (S.G. type 11), fair, showing roulettes on three sides, variety italic "s" in "POSTAGE". Cat. £30. Photo £8  
 2150 ○ — 2c. yellow (S.G. type 12) very fine. Photo £30  
 2151 ○ — 4c. blue (S.G. type 15) very fine. Photo £28  
 2152 1938-52 1c. to S3 with perf. variations and including 24c. with upright watermark; 1954-62 1c. to S5 and 1961 5c. to 30c. and eleven others, all fine mint. (54) £10

**British Honduras**

- 2153 ★ 1866 unwatermarked perf. 14 1d., 6d. and 1/-; 1872-79 CC perf. 12½ 1d., 3d. and 6d. both shades; perf. 14 1d., 3d., 4d. and 1/-; good to fine unused or mint. Cat. £114. (11) £35  
 2154 △ 1888-89 CA 2c. on 1d. carmine bisected diagonally and used on large pieces (S.G. 37a), fair to fine, one defective. (9) £24  
 2155 ⊕ 1891 the scarce essay "six" in red on 10c. on 4d. fine mint condition. Photo £12  
 2156 ★ 1891-98 CA 25c., S1 and S2 fine, mint £7  
 2157 ★ 1905-07 MCA S5 grey-green and black, fine mint. Photo £30  
 2158 ★ 1913-21 MCA 1c. to S5 except S1 but including both 25c., also 1922-33 Script \$1 black and scarlet, all mint. Photo. (11) £30  
 2159 ★ — S5 purple and black on red, very fine mint. Photo £30  
 2160 ⊕ 1922-33 MCA S5 purple and black on red superb unmounted marginal mint. Photo in colour on back cover £34  
 2161 ★ 1938-47 1c. to S5; 1949 St. George's Cay 1c. to 15c.; 1951 University 3c. and 10c.; 1953-57 1c. to S5 and 1960-62 complete, all fine mint. (60) £10

**Cayman Islands**

- 2162 ○ 1901-02 CA ¼d. to 1/- and 1905-06 MCA ¼d. to 1/- all very fine used. (10) £12  
 2163 ★ 1905-06 MCA ¼d. to 1/- fine mint. Cat. £13. (5) £6  
 2164 ★ — 1/- orange; 1907-09 MCA 5/- green and red on yellow and 1912-20 MCA 10/- on blue-green. olive back. all fine mint, the last showing plate number "5" £21



2155

2157

Ex 2158

2159

Ex 2165

Ex 2166

Ex 2170

2171



2169

Lot	Description	Valuation
2165 ★	1907 MCA 4d. to 5/- very fine mint. Cat. £63. Photo. (4)	£34
2166 ○	— ditto, a superb used set. Photo	£40
2167 ★	1907-09 MCA ½d. to 5/- with both shades of 6d., all fine mint. (9)	£12
2168 ○	— ditto, a fine used set, one 6d. a little rubbed. (9)	£12
2169 ★田	— 5/- green and red on yellow, a superb mint corner block with plate number. Photo	£25
2170 ★	1908 CA 1/- black on green and 10/- green and red on green, fine mint. Photo	£25
2171 ○	— 10/- green and red on green, very fine. Photo	£30
2172 ★	1908 "1d" on 4d. black and red on yellow revenue stamp	£5
2173 ①	1921-26 die proof in black on thin card with value tablets blank, 2-3 mm. margins. Photo	£25



2173

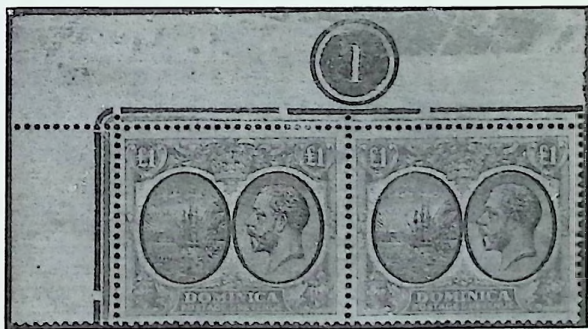


2180

2174 ○	1921-26 MCA 3d. to 10/-, the complete set with all paper varieties, very fine. (8)	£14
2175 ★	1921-26 Script ½d. to 10/- with both shades of 6d., all fine mint. (15)	£9
2176 ★	— 10/-, carmine and green, a fine mint corner pair	£20
2177 ★	1932 Centenary ½d. to 10/-, the fine mint set. Cat. £75. Photo. (12)	£48
2178 ○	— a very fine used set, also 1935 Jubilee set fine. Photo. (16)	£65
2179 ★	1935 Script ½d. to 10/- fine mint. (12)	£10
2180 ①	1968 Christmas ¼d. multicoloured with gold printing omitted so name of Colony and title of picture missing, fine unmounted mint, with normal for comparison. Photo	£200



2182



2184



Ex 2177

Ex 2178

## Dominica

Lot	Description	Valuation
2181 ★	1903 CC ½d. to 5/- mint, some with slight faults. Cat. £42. (10)	£15
2182 ★	1908-21 MCA 5/- red and green on yellow, a superb mint block. Photo 13	£30
2183 ★	1923-27 MCA £1 black and purple on red, a superb mint corner block with plate number. Photo in colour on front cover	£150
2184 ⊗	— ditto, a superb mint corner pair with plate number. Photo 13	£75

## Falkland Islands

2185 ★	1861-67, the black and the red franks on small pieces	£15
2186 ⊕	1878 imperforate plate proofs of the 1d. in red-brown, 6d. in blue and 1/- in green and in dark brown; all fine. Photo in colour on front cover	£75
2187 ○	1878-79 unwatermarked 1d. claret and 4d. grey-black both very fine. Photo	£26
2188 ○	— 4d. grey-black very fine. Cat. £28. Photo	£12
2189 △	— 6d. blue-green, a pair used on small piece with 1883-1902 1d. red-brown bisected in pair with whole stamp and 4d. grey-black (defective); an unusual combination. Photo. (5)	£30
2190	— 6d. and 1/- fair unused; 1888-1902 1d. shades (3, all unused) and 4d. (3, one overprinted "Specimen"; 1885-91 CA sideways 1d. (2, one unused) and 4d. used and a 1d. bisected used (not guaranteed). (12)	£12
2191 ★	— 1/- bistre-brown; 1883-1902 ½d. shades (3), 1d. shades (6), 2d. (5), 2½d. shades (3), 4d. pair, 6d. (2), 9d. (2) and 1/- also 1885-91 watermark sideways 1d. claret; all good to fine unused or mint. (25)	£17



2192	1883-1902 ½d. (3, one used), 1d. shades (6, two used), 2d., 2½d. (3), 6d. (3, one overprinted "Specimen"), 9d. and 1/-, mixed condition, some not fine. (18)	£10
2193 ○	— ½d. (2), 1d. shades (6), 2½d. shades (5 including Prussian blue), 4d., 6d., 9d. and 1/- (scarce type cancellation) also 1885-91 CA sideways 1d. and 4d.; all fine to very fine. (19)	£20
2194 ★	— ½d. blue-green, a complete mint sheet, somewhat stained, mostly on the margins. (60)	£30
2195 ○	— ½d. yellow-green, a fine block (5×2) showing misplaced watermark, CA at top and crown below	£10

2189



2189





2196

Lot	Description	Valuation
<b>1883-1902 — contd.</b>		
2196 △	— 1d. red-brown bisected used on piece with a pair of normal stamps, very fine. Photo	£21
2197 △	— 1d. brown pair used with 4d. grey-black on piece of registered envelope showing the Crown and "REGISTERED" cancellation and London arrival mark	£8
2198 ★	— 2½d. Prussian blue fine mint. Photo	£10
2199 △	1891 "½d" on half of 1d. claret, three examples and another with surcharge inverted, all fine used together on small piece. Photo	£75
2200 △	— ditto, variety surcharge inverted fine used on small piece. Photo	£25
2201 △	— ditto, variety surcharge sideways fine used on small piece. Photo	£30
2202 ★	— "½d" on half of 1d. red-brown variety surcharge double unused, from foot of sheet showing guide dot. Photo	£25
2203 △	— "½d" on 1d. red-brown surcharged posthumously, unused and stuck on small pieces. (2)	£16



2199

2200

2201

2204 Ⓢ	1898 CC 2/6 deep blue and 5/- red fine mint, overprinted "SPECIMEN"	£5
2205 ★	— ditto, as issued unused with gum but heavily mounted. Cat. £24	£10
2206 ★	— ditto, the 2/6 creased and the 5/- somewhat soiled. Cat. £24	£10
2207 ★	1904-12 MCA ½d. (2), 1d. (2), 2d. (2), 2½d., 6d., 1/- and 3/-; 1918-20 War Stamps (15); 1938 ½d. to £1 and 1952 ½d. to £1; all mint. (54)	£14
2208 ★	— 5/- red very fine mint. Now catalogued £25	£10
2209	— ½d. (3), 1d. (3), including the dull coppery red used), 2d., 2½d., 6d., 1/- (2, one "SPECIMEN"), 3/- used and 5/- mint (now catalogued £25) also 1d. watermark sideways used. (14)	£20
2210 ★	— 2½d. deep blue fine mint. Cat. £25. Photo	£15
2211	1912-20 MCA ½d. (3), 1d. (3), 2d., 2½d., 6d., 1/- (3), 3/-, 5/- red and 5/- purple all mint and 10/- fine used on piece; 1918-20 War stamps (10); 1921-29 Script ½d. to 3/- and 1935 Jubilee set; all mint. (38)	£18
2212 ★	— ½d. (2), 1d. (2), 2d., 2½d., 6d., 1/- (3), 3/-, 5/- both colours and 10/- and 1921-29 Script ½d. to 3/- with a few duplicates, all fine mint. (29)	£16
2213 Ⓟ	— 2d. perforated plate proof in orange on very thick unwatermarked paper. Photo in colour on back cover	£25
2214 ★	— 3/-, 5/- both colours, 10/- and £1 and 1921-29 Script 3/-; all fine mint. Photo 16 (6)	£45
2215 ★田	— 10/- red on green, a superb mint marginal block. Photo 16	£45
2216 ★田	— £1 black on red, a superb mint corner block. Photo 16	£120
2217 ★	— ditto, a superb mint single. Cat. £45. Photo 16	£30
2218 ⊗	— ditto, fine marginal unmounted mint. Photo 16	£30



Lot	Description	Valuation
2219 ★ II	1918-20 War stamps ½d., 1d. and 1/- in complete mint sheets of sixty	£10
2220 ★ II	— ½d. green, a complete mint sheet, showing three reversed albino impressions on the margin	£10
2221 ★	— 1d. pale scarlet variety overprint double, very fine mint. Photo 14	£50
2222 ★	— ditto, variety overprint double, one albino, mint. With B.P.A. Certificate (1967). Photo 14	£22
2223 ★ II	— 1/- brown on thick greyish paper, a complete mint sheet	£15
2224 ★	1921-29 Script 2½d. Prussian blue fine mint. Photo 14	£10
2225 ★	1928 "2½d" on 2d. purple unused, very much soiled. Cat. £130. Photo 14	£60
2226 ☒	— ditto, a superb pair used on envelope to Ebbw Vale, Mon., with South Georgia cancellation dated 7th Feb. 1928. Photo 1	£250
2227 ☒	— two single examples used together on envelope with South Georgia cancellation dated 19th Feb. 1928, the name and address have been obliterated. Photo	£225
2228 Ⓛ	1929-36 Die proof of an essay for the 2½d. value in deep blue on white gummed paper. Photo in colour on back cover	£50
2229 ★	1929-36 Script ½d. to 10/- with both 6d. and 1/- also MCA £1, all fine mint, also 4d. orange used on envelope. (14)	£25
2230 ★	— ½d. to 10/- with both 1/- values and MCA £1 all fine mint. (12)	£25
2231 ○	— 10/- carmine on emerald very fine	£5



2215



2216



2227

Lot	Description	Valuation
2232 ★	1933 Centenary set ¼d. to £1 a superb mint set. Photo. (12)	£180
2233 ★	— another very fine mint set. Photo	£180
2234 ⊗	— 2/6, 5/-, 10/- and £1 all superb unmounted mint with lower sheet margin. Photo	£150



Ex 2232

Ex 2233

2235 ⊗	— 5/- black and yellow superb unmounted mint. Photo	£40
2236 ⊗	— 5/- black and yellow-orange superb unmounted mint with lower sheet margin. With B.P.A. Certificate (1960). Photo	£100
2237 ★	— 10/- black and chestnut very fine mint. Photo	£35



2235

2236

2237

Ex 2234

<i>Lot</i>	<i>Description</i>	<i>Valuation</i>
2238 ★	1937-66 a complete mint collection except for the 1938-49 5/- indigo and yellow-brown: all very fine. (87)	£14
2239 ★	1938-49 ½d. to £1 with colour changes of values to 1/-; 1952, 1955-57 and 1960 sets complete and Falkland Islands Dependencies 1944-45 the four overprinted sets each with both 6d. shades; 1946-49 Map, both sets and 1954 ½d. to £1; all fine mint. (126)	£19
2240 ④	1962 Radio Communications 2/- deep violet and ultramarine and 1964 Battle of the Falkland Islands 1/- black and carmine-red, both with inverted watermark. Cat. £44	£20

THE END OF THE FIRST SESSION

## THE EXCHEQUER AND THE COLLECTOR

(Capital Gains Tax 1965)

Many of our clients have asked us for advice and help regarding the Capital Gains Tax which came into force as from 6th April 1965, when it was made law by the Finance (No. 2) Bill. The subject of the following commentary is intended for guidance only, as clarification on all facets of this Bill will not be possible for some time to come.

Overseas clients need not bother to read this article, in many cases they have had similar forms of taxation for many years and will know more about this subject than our English clients.

If you own a stamp or collection of stamps, postal history or associated material which is worth less than £1,000, your worries are not immediate. However, with the high appreciation on market values during the last few years, a collection which is worth £500 today may well be worth £1,000 in a comparatively short time. The comparison here is drawn against other forms of investment into which the individual is able to put his money and there can be few more rewarding financial investments than the philatelic market. A piece of advice which should be taken by one and all whenever they buy stamps is **SECURE A RECEIPT FOR ALL PURCHASES OF STAMPS**. The reason for this is plain as the Inspector of Taxes may require, in the future, to see evidence of the amount paid for a stamp when the time comes to make a return of tax after you have sold the stamp.

To those whose holding in the philatelic market is currently above £1,000 the following comments will be of interest.

Let us assume that a collection is sold by auction and is broken down into a number of lots, none of which exceed £1,000, then there is no capital gains tax to be paid at all. If one lot should fetch £1,000 or more, then that lot will be charged on the difference between the value of that lot at 6th April 1965 and the realisation of same less the auctioneer's commission. Therefore, if the lot realised £1,050 and the auctioneer's commission was £105 there would be no tax to pay at all.

An important point for executors of estates to understand is that all professional charges in connection with the sale may be offset against the gross sales before any capital gains tax is assessed. As illustrated above, the auctioneer's commission is one obvious allowance, so are the professional fees made by the solicitor to or executor of the estate.

It must be strongly emphasised to all collectors that their collections should be valued as soon as possible so that capital gains tax may be equitably assessed when the collector decides to sell. At present it is still practicable to estimate the value of a collection or individual item as it would have been at the 6th April 1965 but as time advances, this will become increasingly more difficult and will eventually become quite impracticable. The moral is clear — have your collection valued now.

The standard tax on the gain will be 30%, but may be as low as 21%, depending on the individual's level of income and rate at which he pays sur-tax (if any). Generally speaking, those whose net gains are less than £5,000 per annum, will benefit if they take the option of having their gains taxed as income, but this is only a generalisation and collectors are advised to take the matter up with their accountant for advice on their own cases. It should be noted when considering the amalgamation of all gains to be taxed, that long term and short term gains cannot be mixed but must be kept separate to each other. Short term gains are those where the item has been bought and sold within the same year, whereas long term gains are those where the item has been sold in a longer period than one year from the date of purchase.

## Second Session at 12.00 hrs.

## Falkland Islands Dependencies

Lot	Description	Valuation
2241 ★	1944-67 a complete mint collection, the 1946-49 set with thin map are in blocks of four except the 2½d. also British Antarctic Territory 1963 ½d. to £1 and Churchill set and Ross Territory (5). (145)	£10

## Grenada

2242 ○	1861-62 unwatermarked 1d. bluish-green and 6d. rose and 1863-71 Small Star rough perf. 14-16 1d. shades (4) and 6d. shades (9, including the dull rose-red), all fine to very fine. (15)	£24
2243 ★田	— 1d. green, a fine mint block from top of sheet	£21
2244 ○	— 6d. rose, two fine shades. Cat. £30	£12
2245 ○	1863-83 a collection with a good lot of the 1d. and 6d. values in the various watermark and perf. varieties; 1875 1/- mauve (2); 1881 Large Star ½d. mauve (9, with a mint pair, one stamp "P" of "POSTAGE" omitted, thinned), 2½d. rose-lake (6, one with variety "PENCF" and 4d. blue (4); 1883 (Jan.) Postage in tall type on 1d. orange fine used with blue cancellation and overprinted with S.G. type 12 a used unsevered pair, thinned. (49)	£40
2246 ○	1863-71 Small Star, rough perf. 14-16 6d. dull rose-red with watermark sideways, fine. Cat. £25	£8
2247	1883 CA ½d. to 1/- unused and used sets also ½d., 2½d., 4d., 6d. and 8d. in mint tête-bêche pairs and 1887 CA 1d. carmine (9 including a block of four) used also 1d., 2d. and 3d. Revenue stamps on small piece and apparently postally used. (38)	£10
2248	1886-91 a selection of the various surcharges including 1886 1d. on 1½d. mint and used, 1d. on 1/- mint and used and 1d. on 4d. used; 1888-91 4d. on 2/- both spacings mint and used; ½d. on 2/- mint; 1890 1d. on 2/- and 1891 1d. on 2/- unused; 1d. on 8d. and 2½d. on 8d. four of each including mint tête-bêche pairs. (20)	£20
2249 ★	1895-99 CA ½d. to 1/-; 1906 MCA ½d. (2), 1d. (2), 2d. and 2½d. both shades; 1908-11 MCA 3d. (2), 6d., 1/-, 2/- and 5/-; 1948 Wedding 10/- and 1951 ½c. to \$2.40 also a few other K.G. VI issues; all fine mint. (53)	£12
2250	— ½d. to 1/- mint and used sets and 1898 2½d. ultramarine (3, two used); good to fine. (19)	£9
2251	1902 CA ½d. to 1/- mint and used with two duplicates; 1904-06 MCA ½d. to 5/- except 2½d. mint also ½d., 1d., 3d., 6d. and 1/- used; 1906 MCA ½d. to 2½d. (3) mint and ½d., 1d., 2d. and 2½d. (5) used; 1908 CA 1/- black on green mint and used and 1908-11 MCA 3d. to 1/- mint and 3d. to 2/- used. (38)	£17



2253

Ex 2254

2255

2252 ○	1902 CA ½d. to 10/-, a fine lightly cancelled set, the 10/- a little toned and creased. (10)	£32
2253 ★	— 10/- green and purple fine mint. Photo	£28
2254 ○	1904-06 MCA ½d. to 10/-, a very fine lightly cancelled set. Photo. (10)	£45
2255 ★	— 10/- green and purple superb mint. Photo	£35
2256 ○	1906 MCA ½d. to 2½d. both shades; 1908 CA 1/- and 10/- and 1908-11 MCA 3d. to 5/- all very fine and lightly cancelled. (12)	£32
2257 ★	1913-21 MCA ½d. (4), 1d. (2), 2d. (3), 2½d., 3d. (4), 6d., 1/- shades (4, including on blue-green, olive back), 2/-, 5/- and 10/- both shades; 1916-18 War Tax local overprint a strip of four and single and London overprint (3) and 1921-31 Script ½d. to 10/- a complete set with a few duplicates of values to 1/-. All mint except six. (68)	£21
2258	— 1/- on blue-green, olive back (3, one used) and 1938-50 10/- pale blue and carmine-rose (narrow) perf. 14 very fine used	£12

Lot	Description	Valuation
<b>Grenada—contd.</b>		
2259 ★	1937-50 ½d. to 5/- with perf. varieties and 10/- five shades (without S.G. 163c.); 1951 ½c. to \$2.50 also University and New Constitution sets; 1953-59 ½c. to \$2.50 and 1961 Centenary 3c. to 25c.; all very fine mint. (63)	£16
2260 ○	— 2½d. bright blue perf. 12½×13½, fine. Cat. £30	£15
2261	Postage Due Stamps: 1892 CA 1d. to 3d. mint and used; 1d. on 6d., 1d. on 8d., 2d. on 6d. and 2d. on 8d. all used; 1906 MCA 1d. to 3d. mint and 3d. used and 1921-22 Script 1d. to 3d. mint and 1d. used. (20)	£5
<b>Jamaica</b>		
2262	1860-1966 a collection with a few early Q.V. issues, values to 2/-; K.G. V to 2/-; 1935 Jubilee and a good lot of Q.E. II issues and modern commemoratives, mostly used but ten of the earlier stamps are mint. (206)	£10
2263 ★	1860 watermark pineapple 1d. pale blue; 1870-83 CC perf. 14 ½d., 6d. and 1/- (2) and perf. 12½ 5/- with a few later Q.V. issues; 1937 Coronation; 1945-46 New Constitution set complete and 1948 Wedding £1 with a few later pictorial issues to 1955; all mint. (56)	£13
2264 ○	— 1d. shades (4), 2d., 3d. (3), 4d., 6d. (4) and 1/- shades (4) all fine to very fine. (17)	£16
2265 ☒	— 1d. blue, a defective strip of four and a pair used with two 3d. green on mourning envelope to Scotland, cancelled "A 56" (Moneague). (8)	£10
2266 ○	— 1/- dull brown variety "S" for "s" cancelled "A 30", good condition, a few short perfs. Cat. £48. Photo	£30
2267 ○	1870 to about 1883 a collection of the numeral cancellations mostly on the 1870-83 CC ½d., 1d. and 2d. and all different; all clear strikes. (39)	£5
2268	1870-83 CC perf. 12½ 2/- (2 mint) and 5/- (2, one used); 1883-97 CA 6d. both shades mint, 1/- (3, used), 2/- (2, one used) and 5/- (2, one used); 1903-04 CA 5d. used; 1905-11 MCA 5d. used and 6d. mint; 1905-11 MCA 4d. red-brown used, 4d. black on yellow (3, one used); 1/- (2, one used) and 2/- Venetian red mint. Cat. £72. (23)	£30
2269 ○	1890 "TWO PENCE HALF-PENNY" on 4d. red-brown, overprint double, very fine. Photo	£5
2270 ★ II	1919-21 MCA ½d. (4), 1½d. (4), 2d. (6), 2½d. (10), 4d. (4), 1/- (4) and 2/- (4) all in mint blocks of four or larger. Cat. 656/-. (36)	£13
2271 P	— die proof in black of the 1½d. value on glazed white paper. Slight surface abrasion on the figures of value	£15
2272 ★ III	— 3/- violet-blue and orange, a very fine mint marginal block. Cat. £14	£9
2273 S	1921 the 6d. Abolition of Slavery essay overprinted "SPECIMEN" fine mint. Photo in colour on front cover	£50
2274 ★	1921-29 Script 1d., 1½d., 2d., 3d., 4d. (2), 6d. (2), 1/- (2), 2/- (2), 3/-, 5/- and 10/-; 1923 Child Welfare set: 1929-32 1d., 1½d. and 9d. and 1932 pictorials 2d. to 6d.; all fine mint. Cat. 422/-. (22)	£7
2275 ★	— 2/- light blue and brown, a mint vertical pair from bottom of sheet variety imperf. between stamp and lower margin	£15
2276 ★	— ditto, a very similar lot	£15
2277 ★	1938-52 ½d. to £1 including the three shades of the 5/-; 1945-46 New Constitution 1½d. to 10/-; 1951-56 complete and 1960 Stamp Centenary, all mint. (59)	£8
2278	— 2d. to 10/-; 1945-46 New Constitution set (2) with some perf. varieties mint also a complete set used and later issues to 1960, values to £1 mint and 5/- used. (109)	£6
2279 ★	1938-52 1d. scarlet, a mint corner strip of three, one stamp showing part offset on back and 1956 1d. black and emerald, a mint vertical imperforate pair showing black printing very much out of alignment. (5)	£10



2266

2269

Ex 2269

**ARE WE COMING YOUR WAY?** Throughout the year experienced members of our team are travelling to all parts of the country. If you have a bulky collection for sale, let us arrange transport (special insurance cover). Details from our Head Office, Robson Lowe Ltd., 50 Pall Mall, London, S.W.1.

## Leeward Islands

Lot	Description	Valuation
2280 ★	1897 Diamond Jubilee ½d. to 5/- unused with gum, most values including the 5/- are climatically stained. Cat. £110. Photo. (8)	£65
2281 ★	1902 provisionals (3); 1902 K.E. VII CA ½d. to 1/-, 2/- (2) and 5/- (2); 1937 Coronation set; 1946 Victory; 1949 Wedding and U.P.U. sets and 1951 University set; all mint. Cat. 314/- (27)	£5
2282 ⊕ ⊞	1902 CA 2/6 green and black, a superb unmounted mint block	£6
2283 ★ ⊞	1921-32 Script £1 purple and black on red, a superb mint marginal block. Photo in colour on back cover	£80
2284 ★	— ditto, a very fine mint single. Photo 16	£16
2285 ★	1938-51 a much duplicated mint selection including 5/- (4), 10/- (3) and £1 (3); 1961 University 3c. and 12c. and 1954 ¼c. to \$4.80, all fine mint. (72)	£13



Ex 2286

## Montserrat

2286 ★	1932 Tercentenary ½d. to 5/- all in very fine mint pairs. Photo. (20)	£48
2287 ★	— ½d. to 5/- fine mint all corner or marginal. (10)	£35
2288 ★	— another fine mint set, the three high values with lower margin with plate number "1"	£25
2289 ★	— another fine mint set	£18
2290 ★ ⊞	— 1/-, 2/6 and 5/- each in a block (3×2) with lower imprint and plate number; one 5/- with small defect in corner. Photo. (18)	£200
2291 ★	1938-48 ½d. to £1 with perforation varieties; 1951 University 3c. and 12c.; 1951 1c. to \$4.80 and 1953-58 ¼c. to \$4.80 including the scarce type I; all superb mint. (56)	£14



Ex 2290

YOU CAN TELEX YOUR BIDS London 915410 Bournemouth 41146  
Quote sale number, followed by lot number and mention currency if not sterling.

## Nevis

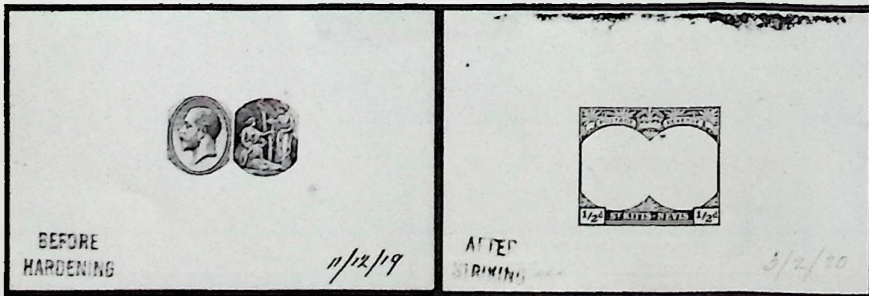
Lot	Description	Valuation
2292	1861 greyish paper 1d. dull rose unused and 6d. grey used; 1866 white paper perf. 15 1d. (3 unused) and 4d. deep orange and 1/- blue-green used also 1876 lithographed perf. 15 1d. unused, 4d. orange-yellow and 1/- pale green used and 1/- deep green mint; fair to fine. Cat. 970/-. (11)	£12
2293 ★ B	1876 lithographed perf. 15 1/- deep green, a superb mint sheet (3×4)	£60
2294 P	1878 lithographed 1d. vermilion-red, an imperforate proof sheet (3×4)	£20
2295	1879-80 CC perf. 14 1d. unused and 2½d. used; 1882-90 CA ½d., 1d. carmine, 1d. dull rose, 2½d. both colours, all mint, 4d. blue used, 4d. grey, 6d. chestnut and 1/- all used also Fiscals used for postage 4d. blue and 6d. green mint; good to very fine. Cat. £35. (13)	£12



2296

## St. Kitts-Nevis

2296 E	1870 (?) two essays in blue and in black in similar design to the first type of St. Lucia but inscribed "ST. KITTS POSTAGE" both imperf. on thin card. Photo	£25
2297 P	1902 die proof on glazed card of the frame of the 1903 1d. value marked "BEFORE HARDENING" and dated "15 DEC 02"	£25
2298 P	1903 imperforate colour trials for the ½d (6) and the 1d. (4), one of each in the issued colour, the others in colours adopted for the other values of the set, one ½d. has diagonal pen-stroke; all are on watermarked paper. (10)	£50
2299 ★	1903 CA ½d. to 5/- and another set overprinted "SPECIMEN", all fine mint. (20)	£7
2300 ★ 三	— ditto, the set in very fine mint blocks of four with a duplicate block of the ½d. (44)	£30
2301 O	— ditto, a very fine used set with duplicate ½d., 1d., 2d., 2½d. and 6d. also 1/- and 2/6 used together on small piece and 2/- used on envelope to Austria. (18)	£9
2302	1905-18 MCA a collection with ½d. to 5/- complete with shades and also five blocks of four and two pairs of values to 1/- all mint (one 3d. soiled) also a complete used set, 1907 ½d., 1d. and 2½d. overprinted "SPECIMEN" and War stamps (9). (67)	£14
2303 P	1920-22 die proof of the central design of the type of the 1d. in black on glazed card marked "BEFORE HARDENING" and dated "11/12/19" in ink. Photo	£25
2304 P	— die proof of the frame of the ½d. in black on glazed card marked "AFTER HARDENING" and dated "3/2/20" in pencil. Photo	£25
2305 P	— die proof of the frame of the £1 value in black on glazed card marked "AFTER STRIKING" and dated "21/4/22" in pencil	£25
2306 P	— imperforate colour trials of the ½d. in brown and blue and in ultramarine and rose, each overprinted "SPECIMEN"	£10



2303

2304



Lot	Description	Valuation
2307	⑤ 1920-22 MCA ½d. to £1 and Script ½d., 1d. both colours, 2d., 2½d. both colours, 3d. dull ultramarine and 2/- all fine mint and overprinted "SPECIMEN". (21)	£6
2308	★ — ½d. to £1 a fine mint set with shades of 1½d., 6d. and 1/- (16)	£30
2309	★田 — 2/6, 5/- and 10/- in superb mint blocks of four	£12
2310	○ — ½d. to £1 with duplicate 1d., 1½d., 3d. and 10/- also 1921-29 Script ½d. to 5/- with all shades and 2/- in a pair on piece used in Anguilla; all very fine used. (40)	£42
2311	★田 1921-29 Script ½d. to 5/-, a fine collection including a complete set in singles and thirty-eight corner or marginal blocks of four of all values to 5/- and all superb mint also 1935 Jubilee set in blocks of four and two single sets all fine mint and a single set used. (204)	£36



Ex 2313

Ex 2314

2312	⑤ 1923 Tercentenary ½d. to £1 fine mint, overprinted "SPECIMEN". (13)	£20
2313	★ — ½d. to £1 a very fine mint set. Photo. (13)	£200
2314	★ — ditto, another fine mint set. Photo. (13)	£200
2315	★ — ½d. (2), 1d. (3), 1½d. (3), 2d. (2), 2½d. (2), 3d. (3), 6d. (2), 1/- (2), 2/- (2), 2/6, 5/- (2), 10/- and £1 all fine mint. Photo (26)	£225
2316	○ — ½d. to £1 a lightly cancelled set, fine except for 2/- with corner defect. Photo. (13)	£220
2317	★ — 5/- black and red on pale yellow fine mint. Photo	£20
2318	⑤ — £1 black and purple on red fine mint and overprinted "SPECIMEN". Photo	£10



2317

2318

2319	★ 1937 Coronation set mint, used and perforated "SPECIMEN" and a set in mint blocks of four also 1938-48 a complete mint set with shade and perf. varieties also corner blocks of 6d. and 1/- perf. 13x12 and 10/- and £1 all fine mint. (65)	£17
2320	★ — ½d. to £1 including perf. varieties; 1950 Anguilla set; 1951 University; 1952 1c. to \$4.80; 1954-57 ¼c. to \$4.50; 1957 24c. and 1961 Stamp Centenary set; all very fine mint. (62)	£12



Ex 2315

Ex 2316

Lot	Description	Valuation
<b>St. Kitts-Nevis—contd.</b>		
2321	1938-48 ½d. to £1 a fine used set complete; 1946 Victory 1½d. and 3d. in mint blocks of nine or larger; 1948 Wedding 2½d. and 5/- mint singles and blocks of four and two of each used; 1949 U.P.U. set mint and used; 1950 Anguilla Tercentenary mint and used and a set in mint blocks of four and 1951 University including two mint blocks of four of each value. (147)	£12
2322 ★	1950 Anguilla Tercentenary 1½d. orange, a complete sheet, one stamp showing the watermark variety Crown missing. Scarce. (120)	£20
2323 ★	— ditto, a mint corner block, one stamp showing watermark variety St. Edward's Crown. Scarce	£20
2324	1952 1c. to \$4.80 mint and used and a set in fine mint blocks of four, some with corner margins and plate numbers. (104)	£18
2325	1953-58 a fine collection of the Q.E. II issues mostly mint and used sets and sets in mint blocks of four with corner margins, with both Waterlow and De La Rue printings of the 1954-57 set. (246)	£36
2326	1961-67 (July) a fine lot of the commemorative issues in mint and used singles and mint corner blocks of four. (190)	£8



### St. Lucia

2327 ★	1860 Small Star perf. 14 to 16 1d. rose-red and 1863 CC perf. 12½ 4d. indigo and 6d. emerald-green good to fine unused, the last two with trace of original gum	£18
2328 ○	— 4d. blue very fine. Cat. £32. Photo	£12
2329 ○	— 6d. green very fine. Cat. £35. Photo	£14
2330 ★	1863 CC perf. 12½ 1d. lake, 4d. indigo and 6d. emerald-green all fine fresh unused with some original gum. Cat. £53	£15
2331 ★	— 1d. lake and 4d. indigo and 1863 "Halfpenny" on 6d. emerald-green fine unused, a little off-centre. Cat. £28	£9
2332 ○	— 1d. brownish-lake, 4d. indigo and 6d. emerald-green, fine appearance, some slight faults. Cat. £59	£17
2333 ★	— 4d. indigo and 6d. emerald-green fine fresh mint. Photo	£15
2334 ○	— ditto, fine and lightly cancelled. Photo	£8
2335	1864 CC perf. 12½ 1d. shades (5, one unused), 4d. yellow (2, one unused), 6d. shades (4, used), 1/- orange and 1/- pale orange; good to fine. Cat. £55. (13)	£18
2336 ★	— 6d. violet variety imperforate very fine mint with good even margins. Photo in colour on back cover	£35
2337 ★	1864 CC perf. 14 1d., 4d., 6d. shades (2) and 1/- shades (2) all fine fresh unused or mint	£24
2338	— 1d. black (2, one unused), 4d. yellow (2), 6d. shades (3) and 1/- deep orange; 1881 CC perf. 14 ½d. unused and 2½d. (3, two unused); 1882-84 CA perf. 14 ½d. and 6d. (2, one mint) and perf. 12 4d. yellow (2, used); all fine. Cat. £60. (17)	£20
2339 ★	1881 CC perf. 14 ½d. (3, with a pair) and 2½d. and 1882-84 CA perf. 14 1d., 4d., 6d. and 1/- all fine unused or mint. (8)	£25

Lot	Description	Valuation
2340 ★	1882-84 CA perf. 14 4d. yellow a superb mint pair. Photo in colour on back cover	£30
2341 ★	— ditto, another superb mint pair. Photo	£30
2342	1882-86 CA die I ½d. (3, one used), 1d. (2, one used), 2½d. (3, one mint and 4d. (2, one mint); 1886-87 CA die I 1d., 3d. and 6d. mint and 1d. to 1/- used; 1891-98 die II ½d. to 5/- used and a few duplicates mostly used also ½d. and 1d. used on small piece and cancelled in Barbados. (36)	£10
2343	— ½d., 1d. and 2½d. mint and 1d., 2½d. (2) and 4d. (2) used; 1886-87 die I 1d., 3d., 6d. and 1/- used and 6d. (2, mint); 1891-98 die II 3d. (2, mint), 6d. used and 1/- mint also 1891-92 1d. on 4d. brown mint and used; all fine. Cat. £25. (20)	£8
2344 ○	— 6d. lilac very fine and lightly cancelled. Cat. £38. Photo	£15
2345 ★	1891-98 die II ½d. to 10/- a fine mint set. Cat. £14. (10)	£6
2346 ★	— ditto, a fine mint set; 1902-03 CA ½d. to 1/- with duplicate ½d., 1d. and 1/-; 1936 ½d. to 10/- with perf. varieties; 1938-48 ½d. to £1 with perforation varieties; 1949-50 1c. to \$4.80 and 1953-54 1c. to \$2.50. All very fine mint. (87)	£18
2347	1891-92 "ONE/HALF/PENNY" on 3d. die I mint and die II mint and used; ½d. on half 6d. in mint and used unsevered pairs, a single on piece and two singles on another piece also "ONE PENNY" on 4d. brown also a local front with "ONE HALF PENNY" on 3d. die I used with "½d." on half of 6d. Cat. £35. (14)	£15
2348 ★	1902-03 CA ½d. to 1/- and 1904-10 MCA ½d. to 5/- complete with ordinary and chalky paper where issued, all fine mint. (24)	£14
2349	— ½d. to 1/- mint and used; 1902 CC 2d. green and brown (3, two used); 1904-11 ½d. to 5/- (both) mint and various to 1/- used; fine to very fine. (41)	£20
2350 ★	1904-10 MCA 5/- green and carmine and 1912-20 MCA 5/- green and red on yellow also St. Vincent 1904-11 5/- green and red on yellow; all fine mint	£9
2351	1912-20 MCA ½d. to 5/- with some shades mint and values to 1/- used; 1916 "WAR TAX" local overprint mint and used and 1921-26 Script ½d. to 2/6 mint. 1935 Jubilee set used and 1936 ½d. to 10/- mint; all fine. (76)	£12
2352 ★	— ½d. to 5/- with shades; 1916 "WAR TAX" both types each in a block of four and single; 1921-26 Script ½d. to 5/-; 1935 Jubilee set and 1936 set ½d. to 10/- with perf. varieties, all fine mint. (68)	£15
2353 ★	1938-48 ½d. to £1 with perforation varieties; 1948 Wedding 1d. and £1; 1949-50 1c. to \$4.80 and later sets to 1954 complete and five others. (77)	£11
2354 ★	— ditto, another set also 1949-60 1c. to \$4.80 and 1951-60 complete and Postage Dues (8); all fine mint. (75)	£11
2355 ★	1949-50 12c. perf. 14½ × 14 superb mint. Cat. £70. Photo in colour on back cover	£40
2356 ⊗	Postage Due Stamps: 1949-52 4c. black error Crown missing in watermark, fine unmounted mint. Cat. £20	£6

## FUTURE AUCTIONS IN LONDON

29th and 30th April — GREAT BRITAIN

13th May — EUROPE (Overseas countries)

14th May — AMERICAS

15th May — AFRO-ASIA (Overseas countries)

28th May — BRITISH NORTH AMERICA (Morning)

28th May — BRITISH AFRICA (Afternoon)

29th May — BRITISH WEST INDIES (This catalogue)

30th May — BRITISH EUROPE and ASIA

10th June — AUSTRALIA

11th June — NEW ZEALAND and PACIFIC ISLANDS

24th June — OVERSEAS

25th June — POSTAL HISTORY

8th July — BRITISH EMPIRE

The 1969-70 season will commence with sales on the 9th, 10th, 23rd and 24th September.

## St. Vincent

Lot	Description	Valuation
	<b>1861 intermediate perf. 14 to 16</b>	
2357	○ 1d. rose-red and 6d. deep yellow-green, both fine. Cat. £95. Photo	£35
2358	○ — two more fine examples. Photo	£35
2359	6d. deep yellow-green; 1862 rough perf. 14 to 16 1d. unused and used and 6d. used also 1863-66 perf. 11 to 12½ 6d. deep green used; good to fine. Cat. £58	£16
2360	○ — and 1862 rough perf. 14 to 16 1d. and 6d.; 1863-66 perf. 11 to 12½ 1d. and 6d.; 1866 perf. 11 to 12½ 4d. blue, perf. 14 to 16 1/- . Cat. £106	£32
2361	○ — very fine and lightly cancelled. Cat. £35. Photo	£15

2357

2358

2361

2378



2379

2380

2381

2382

2385

2390

**1862 rough perf. 14 to 16**

2362	★ 1d. rose-red (6, with a pair) and 6d. (3) also 1863-66 perf. 11 to 12½ 1d. rose-red (4), good to fine unused or mint, the 6d. values have some clipped perfs. (13)	£18
2363	○ 1d. rose-red (2) and 6d. deep green; 1863-66 perf. 11 to 12½ 1d. (2) and 6d.; 1866 perf. 11 to 12½ 4d. deep blue; perf. 14 to 16 1/- slate-grey and perf. 11 to 12½ × 14 to 16; all good to fine. (9)	£25
2364	★ — and 6d. deep green each in a fine mint pair	£16
2365	— (4, two unused) and 6d. (2, used) and 1863-66 perf. 11 to 12½ 1d. (3, two unused) and 6d. used; fair to fine. (10)	£16
2366	— (3, one unused) and 6d. used; 1863-66 perf. 11 to 12½ 1d. and 6d. used and 1866 perf. 11 to 12½ 4d. deep blue used; fair to fine. Cat. £47. (7)	£16
2367	○ — and 6d. deep green each in a fine pair and 1863-66 perf. 11 to 12½ 6d. also in a fine pair	£28
2368	○ — a fine strip of six, scarce. Photo	£22
2369	6d. deep green two mint examples, one somewhat off centre and a fine used pair	£9
2370	— (2 unused, one with full gum) and 1863-66 perf. 11 to 12½ 1d. a fine unused strip of three and a single and 6d. fair used, some perfs. short. (7)	£16



2368

**1863-66 perf. 11 to 12½**

2371	★ 1d. a strip of three and two singles and 6d. deep green fair to fine, one 1d. apparently imperf. horizontally	£21
2372	★ — a very fine mint block	£12

Lot	Description	Valuation
	<b>1863-66 perf. 11 to 12½—contd.</b>	
2373 ○	6d. deep green and 1866 perf. 11 to 12½ 4d. deep blue both fine	£9
2374 ○	— with top sheet margin and showing double perforation at top and at right side, very curious	£9
	<b>1863-66 imperforate varieties</b>	
2375 ★ <sup>18</sup>	1d. rose-red, a very fine mint block (6×3). Photo	£175
2376 ★	— a pair from the ungummed remainder stock. With B.P.A. Certificate (1948)	£10



2375

	<b>1866 perf. 11 to 12½</b>	
2377 ★	4d. deep blue, a very fine mint vertical pair. Photo in colour on back cover	£40
2378 ★	— very fine fresh mint. Photo	£25
2379 ★	— unused without gum, reperfed at foot. Cat. £60. Photo	£18
2380 ★	— fine fresh mint, perfs. clipped at right. Photo	£15
2381 ★	— with some original gum, off centre and slight surface rubbing. Photo	£14
2382 ★	— some original gum and fine appearance, small defect above "R" of "FOUR". Photo	£12
2383 ○	— fine, perf. 14 to 16 1/- slate-grey and 1871 Small Star rough perf. 14 to 16 6d. blue-green both very fair, the last on small piece	£17
2384 ○	— very fine and 1869 perf. 11 to 12½ 4d. yellow cancelled in red, 1/- indigo and 1/- brown, good to fine. Cat. £86	£30
	<b>1866 perf. 14 to 16</b>	
2385 ★	1/- slate-grey very fair with some original gum, perfs. cut through design at foot. Cat. £45. Photo	£18
	<b>1869 perf. 11 to 12½</b>	
2386 ○	4d. yellow, 1/- indigo and 1/- brown all fine and lightly cancelled	£25
2387 ○	— a very similar lot, the 4d. cancelled in red, the 1/- brown has minute tear at lower right	£21
2388 ★	4d. yellow very fine mint. Photo in colour on back cover	£35
2389 ○	1/- indigo, a very fine pair, scarce. Photo 28	£20
2390 ★	1/- brown fine mint. Cat. £70. Photo	£24
2391 ★	— some original gum, heavily mounted and some paper adhering to back. Photo 28	£20
2392 ★	— a good unused example without gum. Photo 28	£15
2393 ○	— a pair, one stamp has natural vertical paper flaw, scarce in a pair. Photo 28	£16
2394 ○	— two very fair used examples	£12

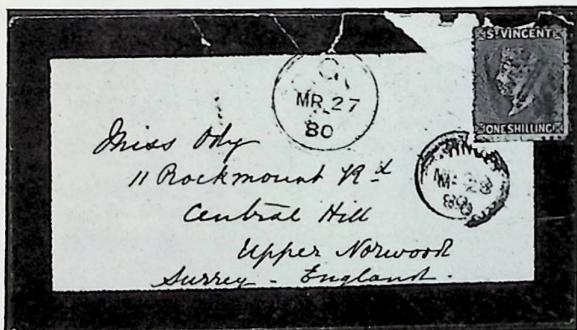
Please ask for a copy of our "Services and Publications" brochure. It contains details of all our auction and private treaty services as well as a full list of books on philately and postal history available from 50 Pall Mall.



Lot	Description	Valuation
	<b>1871 rough perf. 14 to 16</b>	
2395	★ 14 to 16 1d. black a mint corner block (2×3) and a marginal strip of three both somewhat foxed and 1872-73 perf. about 15 1d. black (2, one without gum). (11)	£12
2396	— (3, one used) and 6d. blue-green used; 1872 perf. 11 to 12½ 1/- deep rose-red; 1873-74 perf. 11 to 12½ × 15 1d. black (2) and 1/- lilac-rose also 1881 Small Star perf. 11 to 12½ ½d. orange all fair to good used. Cat. £129. (9)	£28
2397	— (4, one used) and 6d. blue-green; 1872-73 perf. about 15 1d. black unused and 6d. blue-green (2, used) also 1873-74 perf. 11 to 12½ × 15 1d. black mint and used; good to fine. (10)	£15
2398	○ — (4, with a pair) and 6d. blue-green (2); 1872-73 perf. about 15 1d. black and 6d. both shades also 1873-74 perf. 11 to 12½ × 15 (2); all good to fine. (11)	£15
2399	○ — and 6d. blue-green; 1872-73 perf. about 15 1d. black, 6d. blue-green and 1/- dull blue-green also 1873-74 perf. 11 to 12½ × 15 1d. black all good to fine and cancelled in red. (6)	£14
2400	★ 6d. blue-green, a mint pair very fresh, a few perfs. at right ragged. Photo	£30
	<b>1872 perf. 11 to 12½</b>	
2401	○ 1/- deep rose-red, a strip fine except for small tear in centre stamp. Scarce in strips. Photo	£20
2402	○ — a pair, very fine colour, some perfs. clipped at left. Photo	£15
2403	○ — fine except for one short perf. and 1875 perf. 11 to 12½ 1/- claret fine and cancelled in red. Cat. £55. Photo	£20



Lot	Description	Valuation
<b>1872-73 perf. about 15</b>		
2404	1d. black mint and used; 1873-74 perf. 11 to 12½×15 1d. black; 1877 perf. 11 to 12½×15 1/- vermilion (2); 1877 perf. about 15 6d. pale yellow-green; 1877 perf. 11 to 12½ 4d. deep blue and 1880 Small Star perf. 11 to 12½ 1d. olive-green (2) and 6d. bright green; all good to fine used. (10)	£20
<b>1873-74 perf. 11 to 12½×15</b>		
2405	○ 1/- lilac-rose, fine but rather heavily cancelled; 1875 perf. about 15 6d. pale yellow-green good used on small piece	£27
2406	○ — fine, perforations cut into design at foot. Cat. £70. Photo	£25
<b>1875 perf. 11 to 12½</b>		
2407	○ 1/- claret fine and lightly cancelled in red. Photo	£12
2408	○ — a little off-centre with very clear strike of the "CA" cancellation in red. Photo	£20
2409	○ — and 1877 perf. 11 to 12½×15 6d. pale yellow-green and 1/- vermilion; 1877 perf. about 15 6d. pale yellow-green and 1877 perf. 11 to 12½ 4d. deep blue; all very good to fine. (5)	£21
2410	○ — the same five stamps in somewhat similar condition	£20
<b>1877 perf. 11 to 12½×15</b>		
2411	○ 6d. pale yellow-green (2) and 1/- vermilion (5, one badly oxydised and one repaired); 1877 perf. about 15 6d. (3) and 1877 perf. 11 to 12½ 4d. deep blue (2) mostly fair to good. (13)	£24
2412	○ — and 1/- vermilion also perf. about 15 6d. pale yellow-green; good to fine	£9
<b>1877 perf. about 15</b>		
2413	6d. pale yellow-green fine used and 1880 Small Star perf. 11 to 12½ 1d. olive-green unused with part original gum and 6d. bright green unused, brilliant colour, a few perfs. clipped. Cat. £67	£18
<b>1877 perf. 11 to 12½</b>		
2414	★ 4d. deep blue superb mint and very exceptional. Photo in colour on back cover	£40
2415	○ — fine and lightly cancelled. Photo	£9



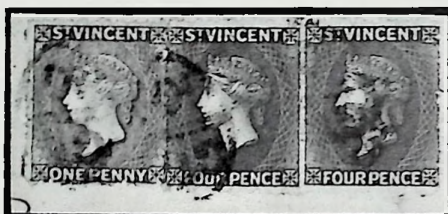
2418



2419

<b>1880 Small Star, perf. 11½ to 12</b>		
2416	1d. olive-green (2, one mint), 6d. bright green (2, used) and 1/- bright vermilion (2, used); all fine to very fine	£25
2417	○ — and 6d. bright green and 1/- bright vermilion; all fine	£10
2418	✉ 1/- bright vermilion, very fair used on mourning envelope to Upper Norwood, Surrey. Photo	£25
2419	★ 5/- rose-red very fine fresh mint. Photo	£80
2420	★ — very fine colour and mint, perfs. a little ragged in places. Cat. £120. Photo in colour on back cover	£45

Lot	Description	Valuation
<b>1880 provisional</b>		
2421 ★	"1d." on half 6d. blue-green, unused part original gum, a little toned and a few perforations short at top. Photo 28	£30
2422 ○	— a very fair used example, thinned. With B.P.A. Certificate (1951). Cat. £40. Photo 28	£10
<b>1881 provisionals</b>		
2423 ★	"½d" on half 6d. bright green, a fine mint unsevered pair. Photo in colour on back cover	£20
2424 ★	— another good mint unsevered pair. Photo 28	£20
2425 ★	"ONE PENNY" on 6d. bright green, very fine mint. Photo 28	£30
2426 ○	— very fair, indistinctly cancelled. Photo 28	£15
<b>1881 Small Star perf. 11 to 12½</b>		
2427 ★	½d. orange and 1883-84 CA perf. 14 1d. drab and 2½d. on 1d. lake and 1883-89 ½d. (2), 1d. shades (4), 4d. purple-brown and 4d. lake-brown all very fine mint blocks of four. (44)	£12
2428	— a mint block of four and two unused singles; 1d. drab (3, one unused) and 4d. bright blue used; good to fine. (10)	£18
2429	— (4, one mint), 1d. drab (6, used) and 4d. bright blue (2, used); all fine to very fine. (12)	£20



2431

2430 ★	1d. drab fine unused with original gum, a few ragged perfs. Scarce in unused condition. Cat. £40. Photo 28	£15
2431 △	— used with pair of 4d. bright blue on large piece of registered envelope to London. Photo	£50
2432 ○	1883-97 a fine collection including many scarcer stamps with 1883-84 4d. bright blue (2); 1885 1d. on 2½d. on 1d. lake (2); 1885 4d. red-brown (4, with a pair); 1883-89 6d. violet and 5/- carmine-lake; 1883-89 perf. 12 4d. bright blue (4) and 6d. bright green; 1890 2½d. on 4d.; 1892 5d. on 4d.; 1897 2½d. blue (4) and 5d. sepia (2); all very fine used except three mint. (81)	£50
2433	1883-84 CA perf. 14 1d. (2, one unused), 2½d. on 1d. lake (6, with a pair mint) and 4d. bright blue used also 1885 4d. red-brown (2, one unused). (10)	£21
2434 ○	— ditto, 2½d. on 1d. and 4d. bright blue; 1885 1d. on 2½d. on 1d. lake also ½d. both shades, 1d. and 4d.; 1883-90 1d. to 1/- complete also both shades of 5/-; perf. 12 ½d. green, 4d. both shades, 6d. and 1/-; 1890 2½d. on 4d. lake-brown and 1890-91 2½d. on 1d. grey-blue; all fine to very fine. (35)	£42
2435 ○	1883-93 a much duplicated selection including 1883-84 1d. drab (7); 2½d. on 1d. lake (2) and 4d. bright blue (5); 1885 4d. red-brown (2); 1883-89 1d. shades (27), 4d. shades (23) and 1/- orange with a few later also a large registered envelope to London with ½d. green, 4d. yellow and "FIVE PENCE" on 6d. used together; all fine. (85)	£40
2436 ★	1883-84 1d. drab (2) and 2½d. on 1d.; 1885 1d. on 2½d. on 1d. a strip of four; 1883-89 ½d. (2), 1d. shades (11), 2½d. milky blue, 4d. shades (3), 6d. violet and 1/- orange (2) all unused or mint. (27)	£13
2437 ★	— 4d. bright blue fine mint, beautiful colour. Cat. £38. Photo 28	£16
2438 ○	— ditto, two fine used shades	£7
2439 ★	1885 4d. red-brown very fine mint. Cat. £48. Photo in colour on back cover	£25
2440 ★	— ditto, unused with much original gum. Photo	£20

**SEVERAL EXCITING ARTICLES** will appear in "The Philatelist" during the coming months. This interesting periodical is published monthly (30/- per annum) by Robson Lowe Limited, 50 Pall Mall, London, S.W.1.

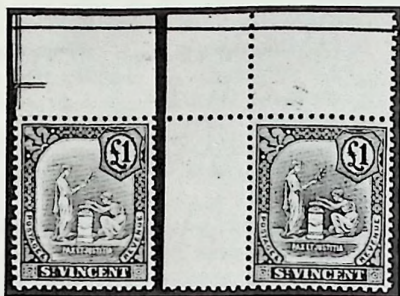


Lot	Description	Valuation
2441 ★田	1883-89 "2½ PENCE" on 1d. milky blue, a superb mint block, very scarce in the true milky blue shade	£10
2442 ★	— 6d. violet and perf. 12 1/- orange-vermilion, both fine mint	£10
2443 ★田	— 5/- carmine-lake, a complete mint sheet (5×4), a few marginal perfs. severed	£30
2444 ★	— ditto, a mint corner pair and two singles, also 5/- brown-lake (2), fine to very fine mint. (8)	£12
2445 ★	1883-89 CA perf. 12 1d. rose-red unused without gum and slightly thinned, colour somewhat faded. Cat. £180. Photo	£50
2446 ○	— 4d. bright blue and 4d. dull blue both fine. Photo	£15
2447 ○	— 4d. dull blue, a good used example. Cat. £40. Photo	£14
2448 ★	— 6d. bright green, fine fresh mint. Cat. £42. Photo	£17
2449 ★	— ditto, another fine mint example. Photo	£17
2450 ★	— ditto, with gum, rather heavily mounted. Photo	£15
2451 ○	— ditto, fine but rather heavily cancelled. Cat. £42. Photo	£12
2452 ★	1890-91 2½d. on 1d. shades (9); 6d. (7) and 1/- (2); 1893 "FIVE PENCE" on 6d. shades (16); 1893 4d. yellow (10); 1897 2½d. (2) and 5d. (4) and 1897 (Oct.) 3d. on 1d. shades (6) all mint; four overprinted "SPECIMEN". (56)	£9
2453 ★田	— ditto, blocks of six and four, 6d. (2) and 1/- in blocks of four; 1892 "5 PENCE" on 4d. and 1897 3d. on 1d. both shades all in mint blocks of four and 1893 4d. yellow a complete sheet (10×3). (64)	£15
2454 ★	1889-1949 a very fine mint collection comprising 1899 CA ½d. to 5/-; 1907-11 badge of Colony type complete; 1921-32 Script ½d. to £1; 1938-47 ½d. to £1 and 1949 1c. to \$4.80. (73)	£24
2455 ★	1899 CA ½d. to 5/- a fine mint set. (9)	£6
2456 ○	— ditto, a good used set with duplicate ½d. and 1d. (11)	£7
2457	1902 CA ½d. to 5/- a fine mint set also ½d. to 2/- fine used. (17)	£10
2458	1904-11 MCA ½d. to 5/- mint with ½d. and 1d. on both papers and ½d. (2), 1d. (2), 2½d., 2/- and 5/- fine used. (16)	£12
2459 ★	— £1 purple and black on red mint, some surface rubbing. Cat. £90. Photo	£50
2460	1907 MCA ½d. to 3d. mint and used; 1909 no dot below "d" 1d. to 1/- mint and used and 1909-11 ½d. to 6d. mint and ½d., 1d., 2d. (5, with a block of four), 2½d. (2), 3d. (2) and 6d. all fine used. (34)	£7
2461 ★	1913-17 MCA ½d. to £1 with shades and duplicates of values to 2/-, one 1d. with inverted watermark also ½d. to £1 a set overprinted "SPECIMEN". (51)	£22
2462	— ½d. to £1 with both colours of the 1/-, the fine mint set. Cat. £32. (13)	£18
2463 ★田	— ½d. (16), 1d. (32), 2d. (4), 2½d. (20), 3d. (24), 4d. (8), 5d. (8), 6d. (8), 1/- black on green, 1/- bistre (16) and 2/- (4) all in superb mint blocks of four. (144)	£15
2464	— ½d. to 5/- a mint and used collection with some duplication also 3d., 4d., 2/-, 5/- and £1 overprinted "SPECIMEN" and 1915 "ONE PENNY" on 1/- mint (4) and used (5, with a block of four; mostly fine. (74)	£12





2466



2467

2484

Lot	Description	Valuation
<b>1913-17 MCA—contd.</b>		
2465	— ½d. (3), 1d. (7), 2d. (2), 2½d. (4), 3d. (4), 4d. (2), 5d. (2), 6d. (3), 1/- black on green (2), 1/- bistre (2), 2/- (2), 5/- and £1 all very fine. (35)	£27
2466	— £1 mauve and black a superb mint marginal unmounted block. Photo	£70
2467	★ — ditto, a fine mint marginal single. Photo	£16
2468	★ — ditto, very fine mint. Cat. £28. Photo 31	£15
2469	△ — ditto, superb used on small piece. Photo	£20
2470	⊞ — ditto, a fine pair used with 5/- block of four and 2d. grey a strip of six on envelope; very unusual. Photo. (12)	£60
2471	★ ⊞ 1915 "ONE PENNY" on 1/- black on green a complete mint sheet showing the varieties "ONE" double [46] and "PENNY" and bar double [106] and many other minor varieties of type. Cat. £202. (120)	£90
2472	— ditto, mint blocks (6×5), (5×6) and (3×2) also a pair and three singles some showing minor varieties, a pair used on envelope and a single used. (74)	£20
2473	★ — ditto, variety "ONE" omitted, fine mint. With R.P.S. Certificate (1962). Photo in colour on back cover	£50
2474	△ — ditto, variety "ONE" double fine used on small piece. With B.P.A. Certificate (1960). Photo	£50
2475	1916-18 War stamps a collection including mint blocks of four or larger, one example of the scarce third setting mint and first and fourth settings with overprint double mint. (118)	£18
2476	— another small selection including mint blocks of four, third setting mint and fourth setting with double overprint, eleven are used. (45)	£10
2477	★ -- ½d. to £1 a very fine mint set. Cat. £32. (14)	£18



2474



2469

2470

Lot	Description	Valuation
<b>1916-18 War Stamps—contd.</b>		
2478 ★	— ½d. to £1 a fine mint selection with numerous shades and duplicates of values to 5/-; values to 5/- overprinted "SPECIMEN" and £1 perforated "SPECIMEN". (65)	£32
2479	— ½d. to 5/- a mint and used selection with considerable duplication also various values to 6d. in fine used blocks of four and 1935 Jubilee set used. (128)	£13
2480 ★田	— ½d. (40), 1d. (68), 1½d. (4), 2d. (36), 2½d. (44), 3d. blue (20), 3d. purple on yellow (16), 4d. (8), 5d. (12), 6d. (4). 1/- (28), 2/- (8) and 5/- (4) all in superb mint blocks of four. (292)	£32
2481	— ½d. to £1 a fine used selection with some duplication of values to 5/- also 1935 Jubilee set mint and used and a set perforated "SPECIMEN". (55)	£30



2482

2482 ★田	— £1 mauve and black a superb mint corner block. Photo	£75
2483 ★田	— ditto, another superb mint block, not marginal. Photo in colour on front cover	£72
2484 ★	— ditto, a superb mint corner example. Photo	£22
2485 ★	— ditto, superb mint. Cat. £30. Photo 31	£20
2486	1937-47 including 1937 Coronation issue, 1938-47 ½d. to £1 in mint blocks of four also a single mint set with some duplicates and a set perforated "SPECIMEN" and a fine used set. (135)	£23
2487	1937-55 a selection including 1938-47 ½d. to £1 three complete mint sets and a used set with some duplicates; 1948 Wedding £1 fine used; 1949-52 1c. to \$4.80 a complete mint set and a few duplicates including \$4.80; 1951 New Constitution set and 1955 1c. to \$2.50 mint. (143)	£17
2488 ★	1938-47 ½d. to £1 mint; 1949-52 1c. to \$4.80 complete mint; 1951 University and New Constitution sets and 1955 1c. to \$2.50 mint. (53)	£9
2489	1946 Victory various including two mint blocks of thirty of each value; 1948 Wedding 1½d. and £1 in mint blocks of four and mint and used singles; 1949 U.P.U. set mint and used and 1951 University College two mint blocks of four of each value and mint and used singles. (166)	£10
2490	1949-52 1c. to \$4.80 two sets in mint blocks of four and mint and used sets in singles also 1951 New Constitution set in blocks of four and pairs mint and a used set in singles. (199)	£32
2491	1953-66 a large collection complete except for the 1965-67 pictorial set; mostly in mint blocks of four with some duplication and mint and used singles. A fine lot. (460)	£20

We would appreciate the co-operation of those clients enquiring by telephone for individual prices realised if they would make their enquiries after 10 a.m. on the day following the auction when the operator will have a priced catalogue available.

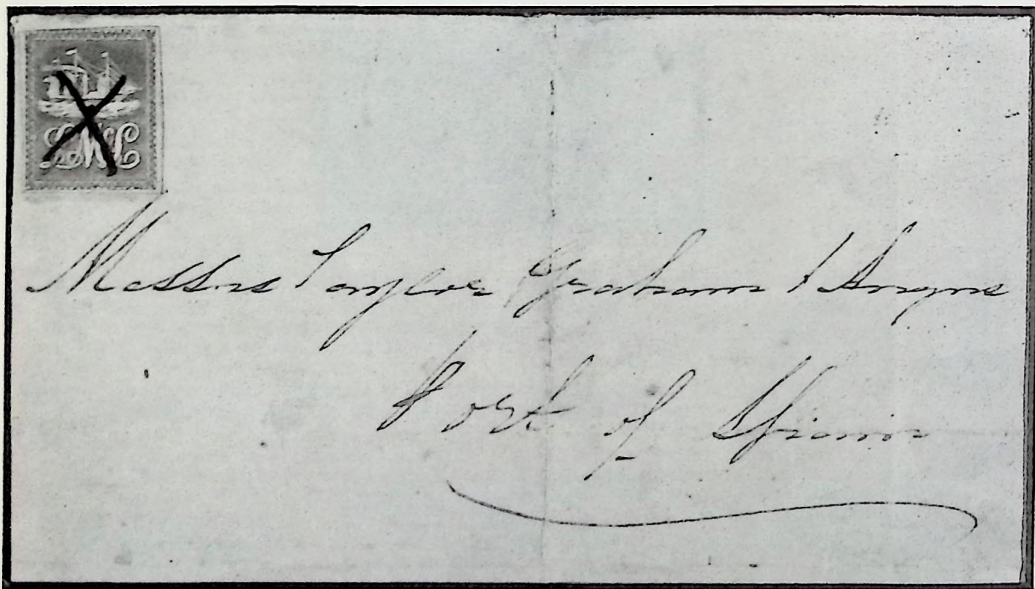


2493

2494

## Tobago

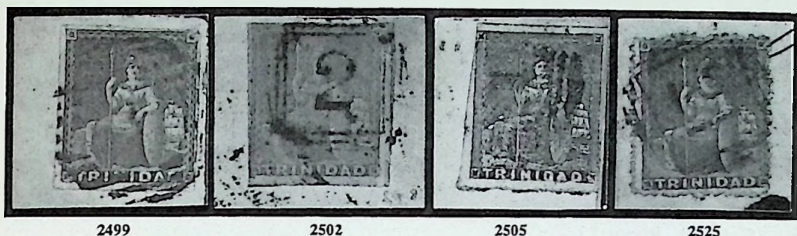
Lot	Description	Value
2492	1879-96 a collection including 1879 CC perf. 14 1d. used, 6d. mint and used (watermark inverted) and 1/- and 5/- used; 1880 CC ½d. to 1/- used with duplicate 4d.; 1883 2½d. on 6d. stone; 1882-84 CA 4d. yellow-green used and 6d. stone unused; 1885-94 CA ½d. to 1/- with some duplication; 1886-89 ½d. on 6d., ¼d. on 2½d. (3, one wide setting), ¼d. on 6d. orange-brown and 1d. on 2½d. (2); 1891-92 ¾d. on 4d. mint and 2½d. on 4d. used; 1896 1/- orange-brown (2, mint) and ½d. on 4d. lilac and carmine (2, used). (55)	£55
2493	○ 1882-84 CA 4d. yellow-green variety malformed "CE" in "PENCE" rather heavily cancelled. A rare stamp. With B.P.A. Certificate (1955). Photo	£20
2494	★ — 6d. stone fine mint. Photo	£30



2495

## Trinidad

2495	☒ 1847 "Lady Mcleod" 5c. blue, fine colour, with good margins on three sides and only just shaved at top left used on entire letter from San Fernando to Port of Spain and cancelled by crossed penstrokes, attractive for this rarity. With R.P.S. Certificate (1967) stating "the stamp has been lifted, the cover treated and the stamp replaced". Photo	£550
2496	1851-63 a selection including 1851-56 blued paper 1d. blue (1851) block of four mint, 1d. purple-brown pair used, 1852-60 lithograph 1d. blue early impression on thick paper, creased, and 1d. red worn impression block of four mint, 1859 pin perf. 12½ 1d. unused, 4d. and 6d. used, pin perf. 13½-14 6d. and 1861 rough perf. 14-16½ 6d. and 1/- mostly fair, a few are fine. (50)	£55



Lot	Description	Valuation
2497 ★(U)	1851-56 blued paper 1d. purple-brown, marginal block (4×2) and 1d. blue, two shades in blocks of four (one marginal and creased) fresh mint. (16)	£15
2498 ○	— ditto, fine used, just shaved also 1d grey, 1d. brownish-grey, 1d. brownish-red and 1d. brick-red fine and lightly cancelled. (5)	£12
2499 △	— 1d. blue, a pale shade, good to large margins (tiny corner defect) on part entire and just tied by cancellation. Photo	£15
2500	— 1d. deep blue marginal mint, 1d. brownish-grey unused and used, 1854-57 white paper 1d. dark grey unused 1d. rose-red (three shades used) and 1860 lithograph 1d. unused and used (not guaranteed) very fair to fine. (9)	£12
2501 ○	— 1d. brick-red, a scarce strip of four, good margins on three sides shaved at top, cancelled "17", the third stamp has a defect at foot	£12
2502 ☒	— ditto, fine on entire letter, tied by cancellation, the stamp is affected by filing creases. Photo	£15
2503 ○	1854-57 white paper 1d. rose-red, both very fine and lightly cancelled	£6
2504 ☒	— ditto, fine on envelope to Barbados also another (ragged at foot and a tiny corner defect) used on piece	£12
2505 ☒	1852-60 lithograph first issue 1d blue, a fine impression on yellowish paper used on 1852 entire to Grenada, tiny faults, very rare. Photo	£150
2506 ○	— fifth issue 1d. bluish-grey, small even margins and lightly cancelled. Cat. £45. Photo	£18
2507 ○	— ditto, 1d. grey, close to large margins lightly cancelled with tiny corner fault and natural paper crease. Photo	£25



2508 ★	1859 imperforate 4d. grey-lilac and 1/- indigo both fine, the 4d. with some original gum	£12
2509 ★	— ditto, a similar pair not quite so fine	£10
2510 ★	— 1/- indigo, two very fine shades, fresh with part original gum	£12
2511 ○	1859 pin perf. 12½, 4d. dull lilac fine showing complete perforations on two sides and traces on other two, very slight foxing, rare. Photo	£35
2512 ○	— 6d. deep green, very fair showing traces of perforations on three sides. Photo	£10

<i>Lot</i>	<i>Description</i>	<i>Valuation</i>
2513 ○	1859 pin perf. 13½-14 1d. (2), 4d. (2) and 6d. (4) with perforations cut on one or more sides except one 6d. and other small faults, mostly lightly cancelled. (8)	£15
2514 ★	— 4d. dull lilac. fine with perforations intact on all sides, with gum that may not be original. Cat. £75. Photo 35	£20
2515 ★	— 4d. brownish-purple (perforations cut off at right and creased), 6d. deep green (perforations cut off on three sides) and 6d. bright yellow-green fine, just a trifle rust stained, two have part original gum	£16
2516 ★	— 6d. deep green fine with perforations cut off at top only. Photo 35	£12
2517 ○	— 1/- purple-slate, very fine with perforations intact on all sides, a trifle toned. Cat. £48. Photo 35	£20
2518	1860 clean cut perf. 14-16½ 1d. rose-red unused with part original gum and used, lightly cancelled but repaired at lower left corner	£6
2519	1861 rough perf. 14-16½ 1d. (6, two unused, one fine), 4d. brownish-lilac, fresh unused perforations cut on three sides and 6d. (3, one yellow-green shade, another with perforations intact all round). (10)	£16
2520 ★	— 6d. yellow-green, fine with perforations cut at top only. Photo 35	£9
2521 ○	— ditto, perforations intact, 6d. deep green, perforations cut at foot and top left and 1/- indigo perforations cut in two sides, very fair and lightly cancelled	£13
2522 ○	— 1/- indigo and 1/- deep bluish-purple (small tear at top and repair at lower left corner) both with perforations intact. Cat. £60. Photo 35	£15
2523	1862-63 thick paper, perf. 11½-12 1d. (3, two unused), 4d., 6d. (2, one unused) and 1/- used, fair to fine. (7)	£13
2524	1863 perf. 13 1d. (8, two unused), 6d. (3) and 1/- (a few perforations clipped) most with light cancellations. (11)	£16
2525 △	— 1d. lake (small fault at top) used on large piece, slight foxing. Photo 35	£10
2526	1863-82 a mainly used selection including 1863-75 1d. (7), 4d. (3) and 6d. (5, with a pair) unused and 1d. (11), 4d. (6), 6d. (12) and 1/- (7) used, 1872 4d. mint, 1876 1d. (3), 4d., and 6d. (3) unused, many shades mostly good to fine. (100)	£35
2527 ★	1863-75 1d. (5), 4d. (2), 6d. (2) and 1869 5/- (2) unused, some with part original gum. small faults. (11)	£10
2528 ★	— 1d. (4 distinct shades), 4d. dull lilac, 1/- (2 shades, one aniline) also 1876 4d. and 6d. fresh with some to much original gum, a few perforation defects. Cat. £48. (9)	£16
2529 ○	— 1d. (9), 4d. (4), 6d. (6), 1/- (8) a used selection with shades, a few faults. (27)	£10
2530 ☒	— 4d. bright violet and 4d. mauve, pairs, one on envelope, the other on piece, a few short perforations	£9
2531 △	— ditto. a similar lot both on large piece	£12
2532 ☒	— 4d. bright violet, a pair and single and 1/- lilac-rose, some perforations cut, used on piece showing a "PAID/AT/TRINIDAD" crowned circle also 1/- lilac-rose used on envelope	£15
2533	1872-82 an unused and used selection with 1872 4d. (5, one unused) and 1/- (5), 1876 to 1/-, 1879-82 C.C. ½d. (5) and C.A. ½d. used. (45)	£15
2533a ★	1876 1d. to 1/- with two shades of 6d., 1879-82 C.C. ½d. (4), C.A. 1d., 1882 C.A. 4d. (2) and 1882 1d. in manuscript on 6d. (3) fine unused. (15)	£12



2534

2534 ○	— 6d. chrome-yellow perf. 14×12½ a very good example of this rarity, light "6" cancellation, a few defective perfs. at right. Cat. £500. Photo in colour on back cover	£150
2535	1894-1909 a mainly mint selection with 1894 5/- (3), 1896-1900 ½d. to 5/-, 1901-06 5/- and 1904-09 to 1/- mostly fine. (56)	£16
2536 ★	1896-1900 C.A. over Crown 5/-, 10/- and £1 mint, the 10/- is insignificantly gum creased. Photo	£50



## Trinidad and Tobago

Lot	Description	Valuation
2537 ★	1913-23 ½d. (4), 1d. (4), 2½d. (3), 4d. (4), 6d. (3), 1/- (4) and 5/- (2) mint with shades. (24)	£7
2538 ★	— 5/- three shades fine mint, slight rubbing	£7
2539 ★	— £1 grey-green and carmine, fresh mint, only very slight traces of rubbing. Photo	£15
2540 ★	— £1 deep yellow-green and carmine, fine mint, very slightly rubbed. Photo	£15
2541 ★	— ditto, a slightly paler shade. Photo	£15
2542	1915-18 a collection of War Tax stamps mostly mint and including 1918 (7th Jan.) 1d. overprint inverted also a few Postage Due and Official stamps. (93)	£6
2543 ★	1921-22 ½d. to £1 mounted mint also 2d. and 3d. used on envelope. (11)	£15
2544 ★	1922-28 ½d. to £1 with 4d. and 1/- both watermark and an additional 5/- (rubbed) fresh mounted mint. (20)	£16
2545 ★	— £1 green and bright rose, fresh mounted mint	£12
2546	1935-62 a mainly mint collection with 1935-37 1c. to 72c. including perforation variety 1938-44 1c. to \$4.80, 1948 Silver Wedding pair, and 1953-55 1c. to \$4.80 (both perforations). (133)	£14
2547 ★	1938-44 1c. to \$4.80, 1953-55 1c. to \$4.80 (both perforations) and 1960-65 1c. to \$4.80 and a few others, fresh mounted mint. (54)	£9



2548



2559

## Turks Islands

2548 ○	1873-79 Small Star 1/- lilac, very fair, perforations cut off at top, intact on other three sides; rare. Cat. £160. Photo	£40
2549 ★	1887-1948 a mint selection including Turks and Caicos 1913-18 ½d. to 3/-, 1917-18 War Tax, 1922-26 ½d. to 3/- with shades, and 1928 ½d. to 10/-. Cat. £51. (104)	£16

## Turks and Caicos Islands

2550 ★	1900 CA ½d. to 1/- with both shades of 2½d. and CC 2/- and 3/-; 1905-08 MCA ½d. to 3d. also 1909 MCA ½d. to 3/-, all fine mint. (23)	£15
2551 ★	1910-28 a mounted mint selection with ½d. to 3/- (with 2/- red on greenish-white and other shades), 1921 ½d. to 1/-, 1922-26 ½d. to 2/- (2) and 3/- and 1928 ½d. to 10/-. (78)	£19
2552 ★	1917 (Oct.) "WAR TAX" overprint at top 1d., a strip of twelve from the top of the sheet, the first six stamps without overprint, rather toned also a single with overprint inverted. (13)	£9
2553 ★	1921 ½d. to 1/- and 1928 ½d. to 10/- mounted mint. (19)	£6
2554 ★	1938-45 ½d. to 10/-, 1948 Centenary ½d. to 10/-, 1950 ½d. to 10/- and 1955-60 ½d. to £1 mounted mint. (53)	£9

## Virgin Islands

Lot	Description	Valuation
2555	① 1866 (c.) 1d. pale blue, 4d. green and 6d. green die proofs in the issued designs on card	£20
2556	★ 1866 white paper 1d. (2 shades), toned paper 1d., and 6d. (showing portion of papermaker's watermark), 1867-68 pale rose paper 4d. (2), buff paper 4d., 1/- (coloured margins) and 1879 CC sideways 1d. and C.C. upright 1d. (2) fine unused or mint. Cat. £56. (11)	£18
2557	★ — 1d. (2 shades), toned paper 1d. (2 shades), 6d. and 1867-68 white paper 1d. and toned paper 1d. unused, some with original gum, a few faults. Cat. 730/-. (7)	£12
2558	○ — 1d. deep green and 6d., toned paper 1d. and 1867-68 buff paper 4d. used, small faults. Cat. 710/-	£13
2559	★ — 6d. rose, two shades, fresh mint. Photo 37	£15
2560	○ — ditto, a fine neatly cancelled pair, a few short perfs. in places. Photo in colour on back cover	£25
2561	★ 1867-68 toned paper 1/- rose-carmine, fine, a few blunt perforations. Photo	£15
2562	○ — ditto, on blued paper, centred to foot and a trifle smudgy cancellation. Photo	£12



2563	○ 1867-68 coloured margins 1/- crimson (slight corner crease) and with single line frame on toned paper 1/- crimson very fine. Cat. £24	£10
2564	★ — on blued paper 1/- crimson with wide margin at left, very fine mint. With R.P.S. Certificate (1948). Cat. £55. Photo	£35
2565	★ 1867-68 single lined frame on toned paper 1/- rose-carmine, fresh mint rather heavily mounted. With B.P.A. Certificate (1948). Cat. £16. Photo	£10
2566	1880 CC ½d. unused and 2½d. used, 1883-84 ½d. yellow used, ½d. green (4, two mint), 1d. (2) and 2½d. (4, two mint). (13)	£7
2567	1887-89 1d. (13, with mint block of four), 4d. (5, one used), 6d. (5, one used) and 1/- (3) fine with shades. (26)	£12
2568	1888 4d. in violet on 1/- black and crimson marginal mint (tiny rust stains) and fine used. Cat. £20	£8
2569	★ 1899 ½d. to 5/-, with a few shades, 1904 ½d. to 5/- and 1938 ½d. to £1 fresh mounted mint. (33)	£15
2570	1899 ½d. (7), 1d. (5), 2½d. (2), 4d. (2), 6d., 7d. (7, used block of four), 1/- (2) and 5/-, twelve are used. (27)	£11
2571	○ — ½d. to 5/- (1/- with small defect) fine. Cat. £15. (7)	£5
2572	△ — ½d. "HALFPENNY" mint and used on piece in pair with normal and "HALFPENNY" mint (small thin) and used on piece. Cat. 445/-. (5)	£14
2573	○ — 4d. brown, error "FOURPENCF" superb used. Cat. £100. Photo in colour on back cover	£80
2574	★ 1904 ½d. (5), 1d. (4), 2d. (2), 2½d. (2), 3d. (2), 6d. (3), 1/- (3), 2/6 and 5/-, three are used. (23)	£8
2575	1913-29 a mainly mint collection including 1913-19 M.C.A. ½d. to 5/-, 1922-28 M.C.A. ½d. to 5/- (2), Script C.A. ½d. to 5/- with shades and some duplication. (133)	£24
2576	★ 1937-66 the complete collection. fine mounted mint. (107)	£15
2577	1937-52 a mint and used selection with 1938-47 ½d. to 10/- (3) and £1 (3), 1952 1c. to \$4.80 with imprint strips to 12c. (95)	£8

THE END OF THE SALE



# PRIVATE TREATY

SALES BY ROBSON LOWE

## BRITISH GUIANA 1876-1938

A mixed mint and used collection with a good range of shades and suitable for expansion into a more specialized study.

The 1876 issue includes the 96c. used, also the 1c. compound perf.  $14 \times 12\frac{1}{2}$  and 4c. perf.  $12\frac{1}{2}$  (thinned). The 1881 surcharges are well represented, including officials. The 1888-89 set has a \$3 and \$5 used and the 1889 set is complete used to 96c. Also noted were the 1900-07 60c. mint, 1905-07 set complete mint (several with plate numbers), 1931 Centenary and 1934-51 sets mint.

Last comes a section of Officials which include 1875 8c. used and 1877 1c. (3) used and 6c.

433 stamps

£145

## ST VINCENT 1861-99

A fine, mainly used collection on leaves strong in the rare early perforation varieties.

The following stamps were particularly noted: — 1861 intermediate perf. 14-16 6d. used (3); 1863-66 perf. 11 to  $12\frac{1}{2}$ , 6d. used (3), the very rare perf. 11 to  $12\frac{1}{2} \times 14$  to 16, 1d. used; 1866 1/- brown, used (2) and 1/- indigo, used.

Among the small star watermarks, we found 1871 6d. used (3); 1872 1/- used (2); 1873-74 1/- used; 1875 1/- used (2); 1877 perf. 11 to  $12\frac{1}{2}$  6d. used (6), 1/- used; 1880 6d. bright green used (5), 1/- used (5), 5/- used (small tear); 1881 1d. on half of 6d. unused. "ONE PENNY" on 6d. mint; 1881 (Dec.) 4d. used (2) and 1883-4 4d. dull blue, used.



Later issues are also strong with several shades to include 1883-89 6d. violet, mint and used, perf. 12, 1/- mint and used; 1890  $2\frac{1}{2}$ d. on 4d. mint and the 1899 set complete mint.

Lastly comes a section of 120 Revenue stamps from 1883-1890.

297 stamps

£400

# 50 PALL MALL

ENQUIRIES TO:-  
DAVID MUSCOTT — Tel. 01-839 4034

# The Art of Selling

ANYONE can sell, and many people think that selling by auction means nothing more than sitting up on a rostrum and wielding a hammer! They therefore look for the auctioneer who charges the lowest rate of commission and are then disappointed (more often than not) by not getting the price for which they had hoped.

To those who think more seriously, there are two very obvious essentials in selling, whether it be stamps or any other commodity:

1. They must be made to look as attractive as possible.
2. The fact that they are for sale must be made known as widely as possible, especially among people most likely to be interested.

Everyone knows how an attractive shop window will draw the attention of crowds, and it is equally obvious that if one is advertising in a periodical one must choose one which will be read by the most likely buyers. These things are so obvious that one hesitates to write them down, BUT — does every collector think seriously about them when trying to obtain the best nett price for his stamps?

In our firm, we have studied methods of selling for over forty years and many articles have appeared indicating all the detailed work involved and all the care and attention given to properties of all kinds, large or small.

For this article, therefore, it will suffice to say that the basic points mentioned above are covered by:

1. Our catalogues. These are the work of experts and have the highest reputation for accuracy both for valuations and descriptions. They are attractively designed: the better stamps are illustrated — many of them in colour — and everything is set out in such a way as to give the potential buyer the clearest idea of what the stamps are like and what they will be worth to him.
2. Our advertising. In addition to a world-wide mailing list for catalogues, our Busy Buyers' Service, with a membership of some six hundred, undertakes to notify all specialists out of Europe of individual lots which are likely to interest them. The maximum amount of competition is thereby obtained, and our export records as shown in our Annual "Review" will readily indicate how much prices are increased by the enormous competition from overseas. We also have full page advertisements in the leading periodicals, where our "In the sale room" articles and "The Pall Mall Gazette" are read by hundreds of collectors and dealers.

It must be obvious that services of this standard cannot be done for nothing, but when one considers that the average dealer counts on making at least fifty per cent profit on anything he buys, is it so surprising that an auctioneer, giving the best possible service, charges a maximum of twenty per cent? Overheads and cost of labour indicate that these charges may eventually have to go up, but for those who wish to sell during the present flourishing state of the market, the scale of fees will remain unchanged for the time being.

---

ROBSON LOWE LTD., 50 PALL MALL, LONDON, S.W.1, and BOURNEMOUTH  
STAMP AUCTIONS, GRANVILLE CHAMBERS, RICHMOND HILL, BOURNEMOUTH

**LONDON  
BOURNEMOUTH  
BASLE**

# THE ROBSON LOWE AUCTION DIARY

1969

- 29th and 30th April GREAT BRITAIN Auction in London including the "Mellor" collection with fine blacks and blues, the former with blocks, strips and coloured cancellations, 1841 1d.'s with mint blocks of plate XI, surface printed with many high face values including a used strip of ten £1 green, Twentieth Century, officials and Ireland. Catalogue 10/-.
- 8th/9th May GENERAL Sale in Bournemouth. Catalogue 5/-.
- 13th May EUROPEAN Auction in London including a further portion of the "Mellor" and "Marley" collections with fine sections of Denmark, France, Germany, Norway, Sweden and Vatican City. Also the 'Desmond Stewart' Greece and many airmail issues. Catalogue 10/-.
- 14th May AMERICAS Auction in London with important Colombia and Ecuador (both with rare Scadta airmails), Dominican Republic and U.S.A. Many airmail issues. Catalogue 10/-.
- 15th May AFRO-ASIA Auction in London with the "Mellor" China and exceptional Egypt, Formosa, Iraq, Korea, Mongolia, Siam and Tibet. Catalogue 10/-.
- 28th May (morning) BRITISH NORTH AMERICA including the "Godfrey Mellor" collection with fine Canadian "Pence", 1859 issues and large Queens and Newfoundland with outstanding "Pence", rare 1897 1c. provisionals and later particularly airmails. Catalogue 10/-.
- 28th May (afternoon) BRITISH AFRICA with a further portion of the "Mellor" collection and important sections of Cape of Good Hope, Gambia, Gold Coast, Madagascar, Mauritius, Kenya (with a mint £20), Rhodesia (especially Double Heads and Admirals) and South Africa. Catalogue 10/-.
- 29th May BRITISH WEST INDIES with more from the "Mellor" collection and fine Barbados, Cayman Islands, British Guiana, Falkland Islands (two covers with pairs of the 1928 provisional), St. Kitts, St. Lucia, St. Vincent, Trinidad (with a Lady McLeod cover) and Virgin Islands. Catalogue 10/-.
- 30th May BRITISH EUROPE AND ASIA with exceptional Hong Kong comprising the Colonel F. W. Webb and Colonel G. H. Latham collections. Also scarce Cyprus, Ireland and Malaya. Catalogue 10/-.
- 6th June GENERAL Sale in Bournemouth. Catalogue 4/-.
- 10th June AUSTRALIAN COMMONWEALTH AND THE SIX AUSTRALIAN STATES including outstanding N.S.W. and Tasmania. Catalogue 10/-.
- 11th June NEW ZEALAND AND THE PACIFIC ISLANDS with 300 lots of Chalons, a unique collection of essays, proofs and colour trials. Catalogue 10/-.

**GREAT BRITAIN - BRITISH EMPIRE - OVERSEAS - POSTAL HISTORY**



2213

2473

2573

2037

2160

2355



2085

2420



2228



2283

2388

2414

2340

2336



2377

2423

2439

2534

2560

**PRICES  
REALISED**



---

# **British West Indies**

**SPECIALISED STAMP SALES**

*Lots not included in this list either failed to fetch the reserve, were withdrawn or did not bring a bid*

---

**SALE Nos. 3186-3187**

**Thursday 29th MAY, 1969**

**ROBSON LOWE LTD.**

**50 PALL MALL, LONDON, S.W.1.**

SALES, 29th MAY, 1969

## REALISATIONS

of the British West Indies Stamp Sales, Thursday, 29th May, 1969

Lot	£	s.	d.	Lot	£	s.	d.	Lot	£	s.	d.	Lot	£	s.	d.
2001	21	0	0	2043	19	0	0	2089	9	10	0	2131	16	10	0
2002	36	0	0	2044	8	10	0	2090	8	10	0	2132	60	0	0
2003	31	0	0	2045	45	0	0	2091	4	0	0	2133	40	0	0
2004	85	0	0	2047	7	0	0	2092	11	0	0	2134	9	0	0
2005	16	0	0	2048	11	0	0	2093	21	0	0	2135	5	10	0
2006	210	0	0	2049	5	10	0	2094	10	0	0	2136	24	0	0
2007	105	0	0	2050	40	0	0	2095	8	10	0	2137	11	10	0
2008	95	0	0	2051	14	10	0	2096	8	5	0	2138	18	0	0
2009	42	0	0	2052	10	0	0	2097	21	0	0	2139	19	0	0
2010	15	0	0	2053	12	10	0	2098	7	10	0	2140	21	10	0
2011	6	10	0	2054	16	0	0	2099	10	0	0	2141	22	0	0
2012	12	10	0	2055	10	10	0	2100	10	10	0	2142	17	0	0
2013	3	10	0	2056	9	0	0	2101	80	0	0	2146	3	0	0
2014	11	10	0	2057	8	10	0	2102	13	10	0	2147	6	0	0
2015	12	10	0	2058	18	0	0	2103	9	0	0	2149	8	10	0
2016	5	0	0	2059	29	0	0	2104	26	0	0	2151	34	0	0
2017	13	10	0	2060	3	0	0	2105	15	0	0	2152	7	10	0
2018	8	0	0	2061	8	10	0	2106	33	0	0	2153	34	0	0
2019	8	10	0	2062	16	0	0	2107	14	10	0	2155	12	0	0
2020	16	10	0	2063	9	0	0	2108	19	10	0	2156	9	10	0
2021	12	10	0	2064	8	0	0	2109	15	0	0	2157	28	0	0
2022	6	0	0	2065	12	0	0	2110	18	0	0	2158	30	0	0
2023	12	0	0	2066	14	0	0	2111	28	0	0	2159	27	0	0
2024	12	10	0	2067	9	10	0	2112	72	10	0	2160	30	0	0
2025	8	10	0	2068	7	10	0	2113	5	0	0	2161	9	0	0
2026	9	10	0	2070	5	0	0	2114	13	0	0	2162	16	10	0
2027	6	0	0	2071	12	0	0	2115	26	0	0	2163	6	10	0
2028	5	0	0	2073	13	0	0	2116	14	10	0	2164	23	0	0
2029	22	0	0	2074	9	0	0	2117	16	10	0	2165	30	0	0
2030	7	10	0	2075	7	10	0	2118	11	0	0	2166	46	0	0
2031	37	0	0	2076	6	0	0	2119	18	10	0	2167	10	10	0
2032	5	10	0	2077	6	0	0	2120	13	10	0	2168	29	0	0
2033	25	0	0	2078	17	0	0	2121	16	0	0	2169	80	0	0
2034	24	0	0	2079	10	0	0	2122	13	0	0	2170	26	0	0
2035	10	10	0	2080	16	0	0	2123	5	10	0	2171	29	0	0
2036	13	0	0	2082	8	0	0	2124	7	10	0	2172	7	0	0
2037	Withdrawn			2083	21	0	0	2125	21	0	0	2173	37	10	0
2038	11	0	0	2084	23	0	0	2126	17	0	0	2174	16	10	0
2039	210	0	0	2085	33	0	0	2127	18	0	0	2175	11	10	0
2040	9	10	0	2086	24	0	0	2128	20	0	0	2176	26	0	0
2041	31	0	0	2087	18	10	0	2129	8	0	0	2177	42	0	0
2042	9	10	0	2088	11	0	0	2130	9	0	0	2178	52	10	0

SALES, 29th MAY, 1969

Lot	£	s.	d.	Lot	£	s.	d.	Lot	£	s.	d.	Lot	£	s.	d.
2179	12	0	0	2230	28	0	0	2278	4	0	0	2328	15	10	0
2181	15	0	0	2231	5	10	0	2279	12	0	0	2329	20	0	0
2182	77	10	0	2232	185	0	0	2281	5	0	0	2330	13	10	0
2183	235	0	0	2233	175	0	0	2282	12	10	0	2331	12	0	0
2184	110	0	0	2234	180	0	0	2283	120	0	0	2332	22	0	0
2185	5	0	0	2235	46	0	0	2284	15	0	0	2333	12	10	0
2186	80	0	0	2236	77	10	0	2285	9	0	0	2334	5	0	0
2187	17	0	0	2237	28	0	0	2286	65	0	0	2335	21	0	0
2188	10	0	0	2238	14	0	0	2287	35	0	0	2336	70	0	0
2189	27	0	0	2239	21	0	0	2288	33	0	0	2337	32	0	0
2190	9	0	0	2240	36	0	0	2289	28	0	0	2338	10	10	0
2191	10	10	0	2241	12	0	0	2290	260	0	0	2340	41	0	0
2192	8	0	0	2242	28	0	0	2291	13	0	0	2341	40	0	0
2193	14	10	0	2243	7	0	0	2292	6	10	0	2342	6	0	0
2195	7	10	0	2244	7	0	0	2293	60	0	0	2343	4	0	0
2196	13	10	0	2245	26	0	0	2294	25	0	0	2344	22	0	0
2197	5	0	0	2246	5	0	0	2295	7	10	0	2345	8	10	0
2198	12	0	0	2247	10	0	0	2296	26	0	0	2346	14	0	0
2199	65	0	0	2248	26	0	0	2297	27	0	0	2347	17	0	0
2200	31	0	0	2249	9	0	0	2298	72	10	0	2348	17	10	0
2201	19	10	0	2250	6	10	0	2299	14	0	0	2349	15	0	0
2202	31	0	0	2251	12	10	0	2300	47	10	0	2350	6	10	0
2203	8	10	0	2252	34	0	0	2301	11	10	0	2351	10	0	0
2204	10	10	0	2253	30	0	0	2302	14	0	0	2352	16	10	0
2205	10	0	0	2254	55	0	0	2303	29	0	0	2353	45	0	0
2206	7	10	0	2255	29	0	0	2304	29	0	0	2354	8	10	0
2207	12	0	0	2256	33	0	0	2305	37	0	0	2355	65	0	0
2208	13	10	0	2257	15	10	0	2306	22	0	0	2356	10	0	0
2209	17	0	0	2258	11	0	0	2307	11	0	0	2357	75	0	0
2210	16	0	0	2259	12	0	0	2308	32	0	0	2358	75	0	0
2211	23	0	0	2260	12	0	0	2309	24	0	0	2359	9	10	0
2212	20	0	0	2261	5	10	0	2310	75	0	0	2360	17	0	0
2213	45	0	0	2262	7	10	0	2311	45	0	0	2361	8	10	0
2214	32	0	0	2263	6	10	0	2312	52	10	0	2362	9	10	0
2215	90	0	0	2264	15	0	0	2313	185	0	0	2363	16	10	0
2216	190	0	0	2265	15	0	0	2315	200	0	0	2364	14	0	0
2217	26	0	0	2266	30	0	0	2316	250	0	0	2365	8	0	0
2218	27	0	0	2267	7	10	0	2317	14	10	0	2366	8	0	0
2219	12	10	0	2268	36	0	0	2318	27	0	0	2367	17	10	0
2221	65	0	0	2269	7	0	0	2319	12	10	0	2368	25	0	0
2222	14	10	0	2270	10	10	0	2320	10	10	0	2369	5	10	0
2223	27	0	0	2271	10	10	0	2321	8	0	0	2370	8	10	0
2224	12	10	0	2272	13	0	0	2322	25	0	0	2371	7	10	0
2225	26	0	0	2273	46	0	0	2323	27	0	0	2372	5	0	0
2226	625	0	0	2274	7	10	0	2324	12	10	0	2373	6	0	0
2227	270	0	0	2275	40	0	0	2325	27	0	0	2374	10	10	0
2228	72	10	0	2276	36	0	0	2326	5	0	0	2375	150	0	0
2229	29	0	0	2277	7	10	0	2327	17	0	0	2376	9	10	0

SALES, 29th MAY, 1969

Lot	£	s.	d.	Lot	£	s.	d.	Lot	£	s.	d.	Lot	£	s.	d.
2377	36	0	0	2425	28	0	0	2474	70	0	0	2537	8	10	0
2378	13	10	0	2426	11	10	0	2475	31	0	0	2538	6	0	0
2379	9	0	0	2427	14	0	0	2476	5	10	0	2539	16	10	0
2380	8	10	0	2428	22	0	0	2477	15	0	0	2540	14	0	0
2381	7	10	0	2429	10	10	0	2478	26	0	0	2541	16	0	0
2382	6	10	0	2430	8	10	0	2479	8	10	0	2542	6	0	0
2383	9	0	0	2431	46	0	0	2480	43	0	0	2543	16	10	0
2384	31	0	0	2432	39	0	0	2481	26	0	0	2544	21	0	0
2385	6	0	0	2433	16	0	0	2482	<b>135</b>	<b>0</b>	<b>0</b>	2545	15	0	0
2386	14	10	0	2434	36	0	0	2483	<b>120</b>	<b>0</b>	<b>0</b>	2546	9	0	0
2387	12	0	0	2435	34	0	0	2484	26	0	0	2547	7	0	0
2388	52	10	0	2436	7	10	0	2485	18	10	0	2549	11	0	0
2389	18	0	0	2437	19	10	0	2486	14	0	0	2550	14	0	0
2390	22	0	0	2438	4	0	0	2487	16	0	0	2551	14	0	0
2391	20	0	0	2439	26	0	0	2488	6	10	0	2552	8	10	0
2393	18	0	0	2440	16	0	0	2489	12	0	0	2553	5	10	0
2394	6	0	0	2441	17	0	0	2490	30	0	0	2554	10	10	0
2395	12	10	0	2442	7	10	0	2491	20	0	0	2555	27	0	0
2396	16	10	0	2443	36	0	0	2492	47	10	0	2556	22	10	0
2397	8	10	0	2444	11	0	0	2493	20	0	0	2557	13	0	0
2398	8	10	0	2446	8	0	0	2494	36	0	0	2558	6	10	0
2399	12	10	0	2447	7	0	0	2496	29	0	0	2559	14	0	0
2400	27	0	0	2448	15	0	0	2498	7	10	0	2560	15	0	0
2401	18	0	0	2451	6	10	0	2499	8	0	0	2561	13	0	0
2402	8	0	0	2452	5	10	0	2500	10	0	0	2562	7	0	0
2403	10	10	0	2453	10	10	0	2501	6	0	0	2563	6	0	0
2404	16	0	0	2454	24	0	0	2502	9	0	0	2564	41	0	0
2405	14	0	0	2455	6	10	0	2503	3	0	0	2565	14	0	0
2406	9	10	0	2456	10	0	0	2504	10	10	0	2566	7	0	0
2407	6	0	0	2457	11	0	0	2505	75	0	0	2567	11	0	0
2408	16	0	0	2458	14	10	0	2506	22	0	0	2568	6	0	0
2409	18	0	0	2459	32	0	0	2507	20	0	0	2569	13	0	0
2410	12	10	0	2460	12	10	0	2512	8	0	0	2570	11	10	0
2411	16	10	0	2461	18	0	0	2513	9	0	0	2571	5	0	0
2412	5	10	0	2462	15	0	0	2514	15	0	0	2572	6	0	0
2413	9	10	0	2463	18	0	0	2515	11	10	0	2573	28	0	0
2414	44	0	0	2464	7	10	0	2517	22	0	0	2574	8	0	0
2415	4	10	0	2465	30	0	0	2520	4	0	0	2575	27	0	0
2416	14	10	0	2466	<b>155</b>	<b>0</b>	<b>0</b>	2521	8	0	0	2576	14	0	0
2417	6	0	0	2467	15	10	0	2525	5	10	0	2577	11	10	0
2418	52	0	0	2468	14	10	0	2526	20	0	0				
2419	50	0	0	2469	27	0	0	2527	6	0	0				
2421	31	0	0	2470	<b>100</b>	<b>0</b>	<b>0</b>	2528	7	10	0				
2422	7	0	0	2471	82	10	0	2530	8	0	0				
2423	26	0	0	2472	18	0	0	2535	11	10	0				
2424	18	0	0	2473	70	0	0	2536	52	10	0				

End of Sale

Lots marked with an asterisk (\*) were not as described