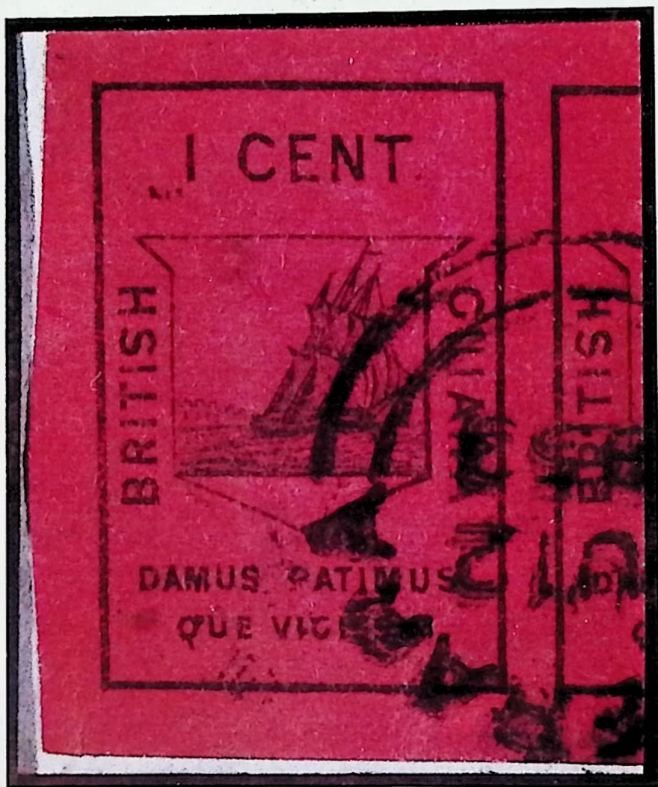


No Pcs

BRITISH EMPIRE

including Specimen stamps offered by Mrs. M. E. Whittles of Jersey, Canada
formed by F. C. Bricker, fine Zanzibar from the collection assembled by Mr.
J. Oulton of Bexhill-on-Sea, Sussex, and the "Hyman Guth" study of the
British West Indies



Lot 118

Tuesday 21st March 1972 at 11.00 and 14.30 hrs.

Wednesday 22nd March at 11.00 hrs.

ROBSON LOWE LTD.

50 Pall Mall, London SW1 Y 5JZ

CATALOGUE 50p

CONDITIONS OF SALE

Every lot in our Auctions is offered subject to the "Philatelic Auctioneers' Standard Terms and Conditions of Sale" (of which follows a Synopsis) and to the Special Conditions printed below. A copy of the former can be obtained free on request from our offices.

Synopsis of Philatelic Auctioneers' Conditions of Sale.

1. The purchaser to be the highest bidder. Any dispute arising as to the highest bidder to be determined by the Auctioneer who may re-offer any disputed lot.
2. (a) The bidding and advances to be regulated at the Auctioneer's discretion.
(b) If so required, buyers to give their names and addresses and/or to pay down the whole or part of the purchase price at the sale. Failure to comply with these rules in respect of any lot entitles the Auctioneer to re-sell the lot, any deficiency being made good by the defaulter.
(c) Agents bidding on behalf of undisclosed clients do so on their own responsibility both for payment and safe delivery of the lots.
3. The Auctioneer reserves the right to bid on behalf of Clients and Vendors, but shall not be liable for any errors or omissions in executing instructions to bid.
4. The buyers of each lot to be responsible for it from the time it is "knocked down". Payment to be made in full before delivery and the lot to be removed by United Kingdom buyers within seven days and by Overseas buyers within a reasonable time. Failure to pay in full within such period entitles the Auctioneer to re-sell the lot, any deficiency being made good by the defaulter.
5. The Auctioneer shall not be liable for any default of the Purchaser or Vendor.
 6. (a) Each lot is sold as genuine and correctly described.
(b) The purchaser to be at liberty to reject the lot by giving written notice within seven days (or, in the case of Overseas buyers, within a reasonable time of the date of the sale) if he proves that the lot is not genuine or is incorrectly described and returns the lot within thirty days of the sale (or within such longer period as the Auctioneer may in his discretion allow). The onus of proving a lot to be not genuine or wrongly described lies with the purchaser; proof of the inability of an Expert Committee to express a definite opinion will not discharge this onus.
(c) No lot to be rejected if, subsequent to the sale, it has been immersed in water or treated by any other process unless the Auctioneer's permission to subject the lot to such immersion or treatment has first been obtained.
(d) The above provisions of this clause do not apply to mixed lots and collections containing undescribed stamps.

SPECIAL CONDITIONS

1. Failure on the part of a bidder or purchaser to comply with the conditions, a synopsis of which is printed above, entitles the Auctioneer to cause the bidder or purchaser to forfeit any deposit held. Any uncleared lots after seven days may be re-sold by public or private sale and any deficiency shall be made good by the defaulters.
 2. Lots purchased on behalf of mail bidders will be forwarded by the most practical method at the risk of the purchaser who shall bear all charges incurred.
 3. The Auctioneer shall not be liable for any omission or errors made by clients when sending their instructions to bid.
 4. If a purchaser wishes to obtain an expert opinion on any lot (not being a mixed lot or a collection containing undescribed stamps), the Auctioneer may, if so requested in writing within seven days of the date of the sale (or in the case of overseas buyers within seven days of receipt of the lot), extend the period within which the lot may be rejected to not later than sixty days from the date of the sale. Where such extensions are requested, the purchaser shall give notice in writing to the Auctioneer. After re-examination of the lot by the Auctioneer the purchaser shall, if agreed by the Auctioneer, submit the lot to a mutually acceptable expert body. Extensions necessitating more than sixty days from the date of the sale will, unless the circumstances are exceptional, only be granted if the permission of the vendor for a longer extension has been obtained by the Auctioneer prior to the sale. The Auctioneer will require the lot to be paid for pending the receipt of the expert opinion, the cost of which is the liability of the buyer. If an extension is required on an item which already possesses a certificate dated within ten years of this sale, written notice must be given at least two weeks prior to the auction in order that the owner's permission for further expertisation may be obtained.
 5. The right to refuse admission to the Auction Room is reserved.
 6. Bids from minors will not be accepted unless accompanied by a full cash deposit or by suitable guarantees. New clients must send references in advance or a full cash deposit.
 7. All purchases made by residents in the Dollar Area must be paid for in Dollars at the controlled rate of exchange or by Sterling Draft.
 8. Interest at 1% for the first month or part of a month and 1½% per month for any further credit, is charged on all auction accounts if payment is not made within seven days of the date of the Sale (Overseas Buyers within seven days of the receipt of the invoice). When paying in any currency other than sterling, 1% must be added to the account to allow for bank transfer costs.
 9. Stamps described as having defects are not returnable on account of their condition. Stamps cannot be returned on account of the centering or the amount of margin when such stamps are illustrated.
 10. Any dispute as to the meaning or operation of these Special Conditions or of the Conditions, a synopsis of which is printed above, shall be determined conclusively by the Auctioneer.
- Valuations are fair values that one might expect to pay on the market today. The finer points of quality are often indicated by these valuations.

DESCRIPTIONS BY ARTHUR GINN

**A ROBSON LOWE
SPECIALISED STAMP SALE**

24

**TUESDAY 21st MARCH 1972
at 11.00 and 14.30 hrs. and
WEDNESDAY 22nd MARCH at 11.00 hrs.**

in the auction rooms of

ROBSON LOWE LTD.

50 Pall Mall, London SW1 Y 5JZ

TELEPHONE 01-839 4034 TELEX 915410

INLAND TELEGRAMS—Stamps London Telex

OVERSEAS CABLES—Stamps London S.W.1



812

Regular Stamp Auctions held in London, Bournemouth and Basle
Proprietors of "The Philatelist" and "The Philatelic Journal of Great Britain"
Publishers of "The Encyclopaedia of British Empire Postage Stamps" and many
other standard philatelic works

Overseas Agents—

Australia Robson Lowe (Australasia) Pty. Ltd., 6th Floor, Howey Court, 234 Collins St., Melbourne, Victoria 3000

Bermuda G. Osborn, Robson Lowe (Bermuda) Ltd., Box 88, Harrington Sound Post Office

Canada George S. Wegg Ltd., 37 Victoria Street, Toronto 1

India Jal Cooper, Standard Building, Dr. Dadabhai Naoroji Road, Bombay

Italy Adriano Landini, Robson Lowe Italiana S.A.S., Palazzo Dell'Orso, Via Dell'Orso 7/A, 20121, Milan

Norway F. C. Moldenhauer, Haakonsgt. 16, Bergen

South Africa Eric Boseley, Wicks Stamp Agency, 39 Loop Street, Pietermaritzburg, Natal

Spain Nestor Jacob, Rodriguez San Pedro 12, Madrid 15

Sweden Bertil Agerfeldt, Odangatan 23, Stockholm 'O', and Nils Farnström, Öregrundsgatan 10, tr. 4, 11538 Stockholm

U.S.A. (Miami) H. J. M. R. Co., P.O. Box 308, North Miami, Florida 33161

Members of the "UNCOMMON MARKET" partnership with Jacques Robineau of France, J. L. Van Dieten of Holland and Urs Peter Kaufmann of Switzerland.

Robson Lowe Ltd. are in association with Christie's, 8 King Street, St. James's, London, S.W.1.

Christie's Overseas Companies—

Christie, Manson and Woods (U.S.A.), 867 Madison Avenue, New York, 10021, N.Y.

Christie, Manson and Woods (International) S.A., 8 Place de la Taconnerie, Geneva 1204, Switzerland



27

28

31

55

57



59

62

63

64

65

68

69



83

85

110

115



73

117



120

121

122

123



119

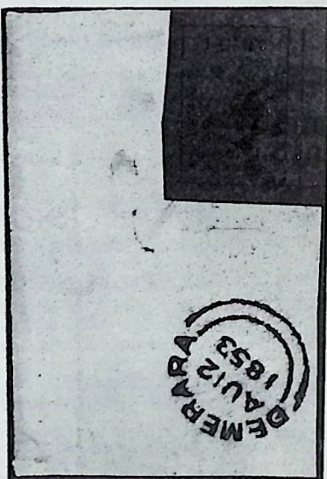


124

125

128

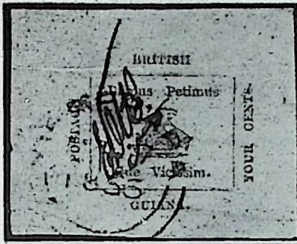
129



118

PUZZLED by "A/60", "B/88", "C/46" and other letter and number postal strikes of the nineteenth century? ALL THE ANSWERS — at least over five thousand of them, are set out in the sixty-four pages of "Numeral Cancellations of the British Empire" compiled by the Rev. H. H. Heins. This proved popular volume is now in its third edition. Price £1.75 from —

ROBSON LOWE LIMITED
 GRANVILLE CHAMBERS, RICHMOND HILL, BOURNEMOUTH, HANTS.



126



149



150



133



142



147



152



163



165



166
219



205
220



218
221



311
312



222



223



224



313



285



286



315



316



314



323

324



326

327

329



333

336

372

397

418



428

453

470

488

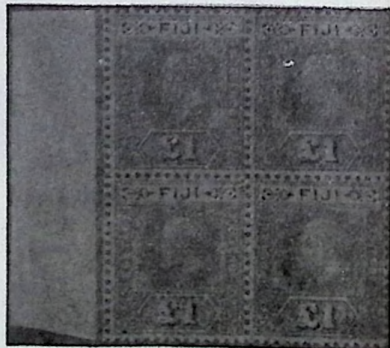
517



430



456



443

Lot numbered 443 is lot 442







776

777

780

789

791



804



809



816



817



811



818



822



823



825



835



840



841



842



850



851



860



868



879



881



889



882

883

901

904



898

915

935



905

906

907

908



931

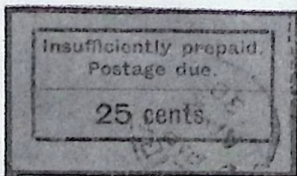
960



954

969

982



1009



996

997



1012

1013

<p>67</p>	<p>361</p>
<p>357</p>	<p>358</p>
<p>167</p>	<p>359</p>
<p>496</p>	<p>631</p>
<p>693</p>	<p>853</p>
<p>754</p>	<p>784</p>

Viewing Arrangements

Lots will be on view in the auction rooms of Robson Lowe Ltd. at 50 Pall Mall

Monday 13th March until Friday 17th March 1972	10.00 - 17.00 hrs.
Monday 20th March	10.00 - 17.00 hrs.
Tuesday 21st March	10.00 - 11.00 hrs.

Lots of a suitable size can be sent through the post for inspection, postage and insurance both ways to be borne by the client.

Clients who cannot conveniently visit the auction rooms at 50 Pall Mall on the viewing days quoted, may view the lots at an earlier date by making an appointment, either by letter or telephone, giving three days' notice, and the time and lots required.

By observing these arrangements it makes it possible for the Inspection Clerk to reserve the lots required (which might otherwise be with a postal viewer) and to have them available on the mezzanine floor when the clients call.

With regard to new clients who request lots for postal viewing, references should be sent in advance.

Symbols, etc.

The use of symbols following the lot numbers is for the convenience of buyers and indicates:

⊕ unmounted mint ★ unused ○ used ✉ cover △ on piece ⊞ block of four
 ⊞ block larger than four Ⓐ Air Mail Ⓢ "Specimen" Ⓒ "Cancelled" Ⓔ Essay Ⓕ Proof
 Catalogue values and numbers are those of Gibbons 1972 edition; where other catalogues are used they are mentioned by name. The abbreviation "c.d.s." indicates circular date-stamp.

The number in brackets at the end of each description is the number of stamps (or items) in the lot.

Extensions

Extensions should be requested at the time of making a bid. Overseas buyers should complete the special form provided and return it to the auctioneer who will then submit the lot to the B.P.A. Expert Committee. Inland buyers must be responsible for obtaining an expert opinion after notifying the auctioneers of their intention on the special form. In no case will extensions be given for B.P.A. or other acceptable expert opinions that necessitate more than two months delay from the date of the sale. Should the buyer (or ourselves on behalf of an overseas buyer) fail to secure such opinion within sixty days, the right to return the lot will be forfeited. The only exception is when the permission of the vendor for a longer extension has been obtained prior to the sale. All costs connected with expert opinions are the liability of buyers. When buyers wish to have an extension for a second opinion, such a bid can only be accepted on the understanding that the second opinion is obtained within sixty days of the auction. Any variation in this condition must be agreed in writing, prior to the auction, between the would-be-buyer and the vendor. All lots on which an extension is granted must be paid for within seven days of the auction.

Sterling Currency Conversion

Overseas buyers will find this table of use when converting their bids into sterling equivalents. These are approximate and this table must not be used for estimating a payment because of the variation in the exchange rates and the cost of bank charges.

Austria—schilling	60.46	Germany—deutschemark	8.49	Portugal—escudo	68.95
Belgium—franc	120	Holland—florin/gilder	8.59	Spain—poseta	171
Canada—dollar	2.50	Italy—lira	1530	Sweden—krone	12.49
Denmark—krone	18.13	Japan—yen	864	Switzerland—franc	10
France—franc	13.80	Norway—krone	17.20	U.S.A.—dollar	2.50

First Session at 11.00 hrs.

Lot	Description	Valuation
1	Ⓢ Early Chalon Head die proofs in black in oval frames 39 mm. high, probably for use on Perkins, Bacon bank notes, one unframed on India paper mounted on card, the others in a later state on India paper mounted on card and printed directly on card	£21
2	Ⓢ Various modern stamps in large mint blocks or sheets comprising Bahamas 1965 2/6, a complete sheet (10×6); Gibraltar 1960 6d., a block (6×5); Rhodesia 1965 Churchill, a sheet (6×10) and 2/6 Independence two complete sheets of sixty and Zanzibar 1963 Freedom from Hunger 1s.30, a complete sheet (5×10). (320)	£34
3	Another selection including Gibraltar 1938-51 2/6 and 5/- 14 of each; Newfoundland 1937 Coronation long set in blocks of four; New Zealand 1940 ½d. to 9d. in blocks of four and 1/- a strip of four; 1939, 1941 and 1942 Health in blocks of twenty-four. (304)	£21
4	★ A collection of modern Middle East issues comprising Bahrain, British Occupation of former Italian Colonies, Kuwait, Morocco, Muscat and Qatar, values to 10/- or 10r. and very fine. (201)	£30
5	★ Various Colonies in Asia comprising Hong Kong 1938-52 values to \$2; Muscat 1944 set to 2r. and Sarawak 1947 1c. to \$5 all in mint blocks of four, also Jaipur Official 1947 "3 PIEES" on ½a. black and violet, two mint blocks of ten (Cat. £30) and Straits Settlements 1937-41, the unissued 8c. scarlet in a mint block (3×3). (263)	£15
6	Ⓢ Various K.G. VI stamps mostly in blocks of four or larger including 1938 ½d. to 5/-; Kenya 1938-54 £1; Nigeria 1938-51 1/3, 2/6 and 5/- (blocks of eight); St. Helena 1938 2/6 (10), 5/- (11) and 10/- (10) and Seychelles 1938-49 1r. black and 1r.50 to 5r. all in blocks of four. (75)	£25
7	Ⓢ — another selection in blocks and singles including Gambia 1938-46 1/3 (40), 2/-, 2/6 (7), 4/- (7), 5/- (3) and 10/-; Nigeria 1938-51 1/3 to 5/- (7 of each); N. Rhodesia 1938 3/- (3), 5/- (3), 10/- and 20/-; St. Helena 1938 2/6 (6), 5/- (5) and 10/- (6) and Swaziland 1938 2/6 (6), 5/- (4) and 10/- (4). (118)	£20
8	○ Northern Rhodesia, Southern Nigeria and Southern Rhodesia, the small used collections including N. Rhodesia 1925 values to 10/-; 1938-52 to 20/-; 1948 Wedding 20/- and 1953 to 20/-; S. Nigeria values to 5/- and S. Rhodesia 1924 5/-; 1931-37 values to 5/- and later complete to 1953 (Aug.) (199)	£24
9	Ⓢ Various K.G. VI issues in America including Barbados 1938 5/- (8); B. Guiana 1938-52 \$2 (9) and \$3 (8); Cayman Islands 1938 2/- (2), 5/- (5) and 10/- (3); Grenada 1938 2/-, 5/- and 10/- (3 of each); Leeward Islands 1938-51 2/- (12), 5/- (12), 10/- (3) and £1 (3); Turks and Caicos Islands 1938 5/- (12) and 10/- (12); 1948 Wedding 10/- (2) and 1949 U.P.U. set. (104)	£40
10	Ⓢ — including Barbados 1938 5/- (8); Bermuda 1938-53 2/- (12), 5/- (4) and 10/- (4); British Guiana 1938-52 \$2 (6) and \$3 (6) and Jamaica 1938 ½d. to 2d., 3d., 4d., 6d. and 1/- to 5/- in blocks of four. (84)	£20
11	Ⓢ — comprising Grenada 1938 2/6 (13), 5/- (13) and 10/- (13) and Leeward Islands 1938 2/-, 5/-, 10/- and £1 in blocks of four. (55)	£22
12	Ⓢ — St. Lucia 1938-48 3/-, 10/- and £1 in blocks of six, also 1949-50 1c. to 16c. in blocks of six and 24c. to \$4.50 in blocks of four; St. Vincent 1938-47 2/- to £1 in blocks of four and Turks Islands 1938 5/- and 10/-; 1948 ½d. to 10/-, also 3d. and 6d. in blocks of four and 1950 ½d. to 10/- in blocks of four. (187)	£45
13	British Empire Booklets, a very fine well written up collection comprising nearly all countries except Canada, Ireland and Newfoundland, also some booklet stamps or panes used on cover. A very fine and attractive lot including some scarce items. (several 100's)	£40
14	★ Various 1937 Coronation issue complete except Newfoundland; 1946 Victory Crown Colonies and 1951 West Indies University issue all in fine mint blocks	£20
15	★ 1948-58 Collection of Kuwait complete except 1955-57 2/6 to 10/- type II and S.G. 90a and 125a.; Muscat 1948-61 almost complete and Qatar 1957-60 complete with 1957-59 2/6 to 10/- types I and II. (177)	£28
16	Ⓢ 1949 British Empire U.P.U. issues complete except Bahawalpur, also Iraq, Jordan and French New Hebrides all in fine mint blocks	£32

AUCTION CONDITIONS — Please note the revision to paragraph 4 of the SPECIAL CONDITIONS.

Lot	Description	Valuation
Specimen Stamps		
17	⑤ Cyprus 1903 CA 18 pi.; Gibraltar 1889 CA 5c. to 5p., 1903 CA 2/, 4/- and 8/- and 1907-11 MCA 2/- and 8/-, also Malta 1921-22 Script 10/- black all mint and overprinted "SPECIMEN". (15)	£15
18	⑤ Ceylon various Q.V. including 1885-87 10c. on 24c. to 1r.12c. on 2r.50c. (soiled), also 1899 1r.50 and 2r.25c.; 1910-11 10r.; 1912-25 2r., 5r. (2), 10r. and 20r. and 1921-34 Script 20r.; B. Sol. Isles 1908-11 2/6; Brunei 1908-12 \$25 black on red; Fiji 1903 CA £1 and 1912-23 MCA £1 die I and Papua and New Guinea 1952 10/- and £1 and 1963 £1. (45)	£25
19	⑤ Various Colonies in Africa including M.E.F. 1947 5/- and 10/- (Cat. £18); Mauritius 1910 10r.; Rhodesia 1898-1908 7/6, £1 and £2 and 1910-16 7/6; Tanganyika 1922 1/- to £1; Uganda 1898 5r. and Zanzibar 1896 5r. (31)	£25
20	⑤ Various Colonies in America including British Guiana 1905 \$2.40; Grenada 1902 CA ½d. to 10/- and 1908 CA 10/-; Leeward Isles 1890 5/-; Montserrat 1914 5/-; Nevis 1890 1/-; St. Christopher 1890 6d. olive-brown, also Jamaica 1938-52 ½d. to 10/- and St. Lucia 1936 ½d. to 10/- perforated "SPECIMEN". (64)	£25
21	⑤ Various Australian States including N.S.W. values to 20/- (3), S. Australia including 1886-96 £3 to £20 and Tasmania 1892-99 10/- and £1. (34)	£16
22	⑤ — including N.S.W. values to 5/-; Queensland first type values to 20/- and 1882-89 2/6 to £1; South Australia 1886-96 2/6 to £20, also various early types overprinted "REPRINT" (15). (68)	£25
Aden		
23	⊕ 1937 values to 3½a. in blocks of four or larger; 1939 set to 10r. in blocks of four, also Seiyun and Hadhramaut 1951 currency change sets to 5/- in blocks of eight. (231)	£20
24	⊕ 1937 ½a. (39), 9p. (38), 1a. (40), 2a. (14), 2½a. (14), 3a. (4) and 3½a. (6), also 1953-59 1/- (50), all mint mostly in blocks. (205)	£10
25	⊕ 1951 currency changed 5c. on 1a. to 10/- on 10r., the set in imprint blocks (4×2). (88)	£20
Aden (Kathiri State of Seiyun)		
26	⊕ 1966 World Cup 10f. on 15c. to 500f. on 10/-, twenty mint sets of seven in blocks. Face value over £19	£13
Antigua		
27	Ⓟ 1862 6d. blue-green, a pair of imperforate plate proofs on toned paper without gum. Photo 2	£20
28	★ 1863-67 Small Star 1d. rosy mauve variety imperforate, three good to large margins, close at left, without gum. Photo 2	£25
29	1863-86, a small collection including 1863-67 Small Star 1d. shades (3, one unused) and 6d. (2); 1872 CC perf. 12½ 1d. (5, four unused, one with inverted watermark) and 6d. used; 1879 CC perf. 14 4d. used; 1882 CA perf. 14 2½d. red-brown mint; 1884 CA perf. 12 1d. mint and 1884-86 CA perf. 14 6d. (2 mint) and 1/- used, fair to fine. (28)	£25
30	★ 1882 CA perf. 14 4d. blue mint and 1884-86 CA perf. 14 1/- mauve mint, slight gum crease	£18
31	★ 1884-86 CA 1/- mauve, a fine mint pair except for small corner crease. Cat. Photo 2	£56. £25
32	★ 1903-09 CA ½d. to 5/-; 1908-17 MCA ½d. to 2/- and 1913 MCA 5/- all mint and five others. (24)	£20
33	1921-29 MCA 3d. to £1 and Script ½d. to 4/- with some shades of lower values and 1935 Jubilee set, all mint, also five envelopes bearing various values of the 1921-29 issue, one in combination with Leeward Islands. (45)	£23
34	★ 1932 Tercentenary ½d. to 5/- in fine mint blocks of four. (40)	£100
35	★ — ditto, a fine mint single set. (10)	£24
36	★ — ditto, another fine mint set. (10)	£24
37	— ½d., 1d., 1½d. (2), 2d., 2½d. (2), 3d. (2), 6d. (5), 1/- (3) and 2/6 used in various combinations on six envelopes, some used in Barbuda. (18)	£20
38	— 5/- black and brown superb used on envelope from Barbuda	£18
39	1937-68, a fine mint collection complete with slight duplication, also a few first day covers. (176)	£30

Lot	Description	Valuation
Ascension		
40	⑤ 1922 on St. Helena ½d. to 3/-, the set overprinted "SPECIMEN" with duplicate 2/- and 3/- (11)	£10
41	— ½d., 1d. (2), 1½d., 2d. (3), 3d. (2), 8d. (2), 1/- (6, with a block of four) and 3/- all mint, also 1/- and 3/- used. (20)	£22
42	1924-35, a small mostly mint selection with 1924-33 ½d. (2), 1d., 1½d., 2d. (3), 3d., 4d., 5d., 6d. (2), 8d., 1/- (2), 2/- (2) and 3/- (2, one used but with corner fault); 1934 various to 2/6 and 1935 Jubilee, a mint set of four and 2d. to 1/- used, also 1d., 2d. and 5d. in mint blocks of four and 5d. in a used block. (57)	£18
43	★ — ½d. and 6d. with torn flag; 2d. and 8d. with cleft in rock, the 2d. in pair with normal and 1d., 1½d., 3d., 5d., 6d. and 8d. with broken mast all mint. (11)	£20
Australia		
44	⑤ 1913 10/- and £1; 1923-24 £1 grey; 1931-36 Cr. C. of A 10/- (3), £1 and £2 (3); 1938 10/- (2) and 1966 Decimal currency 75c. to \$4 all mint and overprinted "SPECIMEN". Cat. £70+. (16)	£25
45	⊗⊕ 1937-49 5/-, 10/- and £1 in fine unmounted mint blocks with Ash imprint. (12)	£20
46	⊗⊕ — 5/- and 10/- and on thin rough paper 5/- (2) and 10/- all in superb corner blocks with Australian Government imprint. (20)	£20
47	⊗⊕ 1948-56 Arms type 5/- to £2 all in superb mint imprint blocks. (16)	£30
Baghdad (British Occupation)		
48	○ 1917, a small used selection comprising S.G. 13, 17, 18, 19, 21 and 24 good to fine	£10
Bahamas		
49	★ 1859-1948, a collection with four early 1d. values and CC perf. 14 1/- green, a block (4×2); 1902 CA 1d. to 5/- and 1906-11 MCA ½d. to 6d.; 1912-19 MCA ½d. to 1/-; War Tax complete without varieties; 1920 Peace set; 1921-29 Script ½d. to 1/-; 1930 Tercentenary 1d. to 3/-; 1938-52 to £1; 1942 Columbus set to £1 and 1948 Tercentenary set ½d. to £1. (158)	£40
50	1859-1931, a small collection including 1859 imperforate thin paper 1d. mint and six other early types; 1903 CC 5d. to 3/-; 1916-19 MCA 3/-; 1917-19 War Tax issues; 1920 Peace ½d. to 1/-; 1921-29 Script 2/- and 3/-; 1930 Tercentenary set; 1931 2/- and 3/- with slate-purple centres and 1935 Jubilee set, ten are used. (77)	£22
51	1859 thin paper 1d. dull lake, a mint pair; 1861 rough perf. 14 to 16 1d. unused; 1862 perf. 11½ to 12 6d. lavender grey used and perf. 13 1d. both shades unused and 6d. lavender grey used, fair to good	£50
52	○ 1861 rough perf. 14 to 16 4d. dull rose with Nassau c.d.s. thinned, also 6d. grey-lilac very fair. Cat. £87	£20
53	★ 1863-80 CC perf. 12½ 1d. carmine-lake, 1d. red, 4d. dull rose and 6d. lilac shades (2) fair to fine unused	£21
54	★ 1863-80 CC perf. 14 1d. scarlet-vermilion, a mint pair (slight gum creases), 4d. rose-lake unused and 1/- dark green (2) with trace of original gum	£20
55	★ — 4d. dull rose fine unused without gum. Cat. £60. Photo 2	£18
56	1882 CA perf. 12 1d. mint but heavily mounted and 4d. used, also perf. 14 1d., 4d. and 1/- all unused, the 4d. with defect	£24
57	★ 1883 FOUR PENCE on 6d. deep violet, a good unused example without gum. Cat. £90. Photo 2	£30
58	1884-1935, a mainly mint collection including 1884-98 values to 5/-; 1902 CA 1d. to 5/-; 1903 CC 5d. to 3/-; 1906-11 MCA ½d. to 6d.; 1912-19 MCA values to 5/-, also £1 "SPECIMEN"; 1920 Peace Set; 1921-29 Script values to 5/-; 1930 Tercentenary set and 1935 Jubilee, also a few covers and Special Delivery stamps (7), one used on envelope with Canada 3c. brown. (99)	£32
59	★ 1884-98 £1 Venetian red superb mint. Photo 2	£30
60	⊠ — ditto, very fine used on registered envelope to Budapest from New Providence	£20
61	⑤ 1902 CA ½d. to £1 and 1912-19 MCA £1 all mint and overprinted "SPECIMEN", the 1902 £1 somewhat toned. (9)	£10
62	★ 1902 CA £1 green and black very fine mint. Photo 2	£40
63	★ — ditto, a similar lot. Photo 2	£40
64	○ — ditto, fine used. Photo 2	£50

Lot	Description	Valuation
Bahamas—contd.		
65 ★	1912-19 MCA £1 dull green and black fine mint. Photo 2	£16
66	1917-19, a fine mint and used collection of the War Stamps including mint and used blocks, some on cover, the lot includes 1918 1d. black and red overprint double one inverted mint but a little soiled. (122)	£30
67 ☒	1918 (Feb.) 1d. carmine overprint "WAR TAX", a used strip of three on envelope, variety overprint double, very fine. Cat. £96. Photo 9	£50
68 ★	1921-29 Script £1 green and black fine mint. Photo 2	£15
69 ★	— ditto, a similar lot. Photo 2	£15
70	1937-52, a mainly mint collection complete except for a few shades, includes 1942 "Columbus" set in mint blocks of four and singles, 1948 Tercentenary Set and 1948 Wedding £1, also a few interesting entires. (165)	£32
71 ⊕⊕	1948 Tercentenary ½d. to £1 in unmounted mint imprint blocks. (64)	£16
72	1953-70 (Jul.) very fine complete mint collection, also a few first day covers, an attractive lot. (192)	£24
73 ★	Special Delivery Stamps: 1916 (May) 5d. black and orange variety overprint double fine mint. Photo 2	£50

Barbados

74 ★	1852-55 blued paper imperf. 1d. blue (4, with a pair); 1861-70 rough perf. 14 to 16 ½d. shades (2); 1873 Large Star clean-cut perfs. 1/- black and 1875-78 CC perf. 14 1d., 3d. and 4d. good to fine unused or mint. (10)	£17
75 ⊙	1861-70 unwatermarked rough perf. 1d. blue and 1873 5/- dull rose (somewhat off centre) both overprinted "SPECIMEN", scarce	£20
76	1882-86 CA values to 3d. (3) mint, also three entires, one bearing 4d. grey in a strip of three; 1892-99 CA ½d. to 2/6 mint; 1897-98 Jubilee ½d. to 2/6, also blued paper ½d. and ½d. mint and a few others. (43)	£16
77	1903-18, a fine mint collection complete except for a few shades, also 1916-20 values to 3/- overprinted "SPECIMEN" and 1918 3/- green and deep violet fine used, also six others. (73)	£34
78 ★	1920 Victory set and 1921-35 complete mint. (44)	£16
79	1937-69 apparently complete mint with a few, including the 1941 5/- indigo, in blocks of four and a number of covers mostly first day. (271)	£20
80 ★⊕	1938-47 ½d. green perf. 14 and 1d. scarlet perf. 13½×13 each in a fine mint block, the first with corner margins. Cat. £80	£24
81	1953-69, a fine mint and used collection fairly complete with some duplication and a few first day covers. (499)	£12

Barbuda

82 ★	1922 ½d. to 5/-, a fine mint set with duplicate ½d., 1d., 3d. and 6d.; 1968-69 ½c. to \$5; 1968 Olympics and 1969 Easter sets all mint. (39)	£24
------	--	-----

Bechuanaland

83 ○	1885-86 on Cape of Good Hope 1d. pale rose-red error "BRITISH" very fine and scarce. B.P.A. Certificate (1968). Cat. £70. Photo 2	£45
84 ⊙	1887 1d. to £5 except 1/- fine and all overprinted "SPECIMEN" diagonally. (11)	£20
85 ★	1888 ½d. vermilion overprinted "Protectorate" (S.G. type 14) variety overprint inverted fine mint. Photo 2	£15

Bermuda

86	1865-1904, a collection of the Q.V. issues all mint or unused except four, includes 1875 "One Penny" on 3d. and on 1/- (defective), condition fair to fine. (39)	£20
87 ★	1865-1903 CC perf. 14 3d. yellow-buff and 3d. orange both fresh unused without gum. Cat. £90	£30
88	1902-36, a fine mostly mint collection including 1910-25 MCA values to 1/- (4), also 2/6 and 4/-; 1920-21 and 1921 (May) sets to 1/-; 1922-34 Script values to 10/- with considerable duplication of lower values; 1935 Jubilee and 1936 ½d. to 1/6 mint and on covers. (172)	£28
89 ★	1910-25 MCA 2/- to 5/- and 1922-34 Script 2/- (2), 2/6 (2) and 10/- all mint	£15

If you have lots for inspection by post please return them promptly as others may be wanting to see them.

Lot	Description	Valuation
Bermuda—contd.		
90	③ 1910-25 MCA 2/6 (2), 5/-, 10/- (3) and £1 and 1922-34 Script 10/- all mint and overprinted "SPECIMEN"	£10
91	★ —10/- and £1 very fine mint. Cat. £56	£25
92	★ 1922-34 Script 12/6 grey and orange fine mint	£18
93	★ 1937 Coronation, 1946 Victory, 1948 Wedding, 1949 100th Anniversary and U.P.U. sets, the mint collection including pairs and blocks with plate numbers or imprints with a corner plate number block of the £1 Wedding. (155)	£16
94	1937-53, a collection including 1942 £1 in a used block of four on piece, also 10/-, 12/6 and £1 (S.G. 121b) all used; 1948 Wedding £1, also a few covers with values up to 2/6 and five items of postal stationery. (78)	£12
95	★ 1938-52 ½d. to 1/6, the very fine mint collection with pairs and blocks mostly with imprints or plate numbers and showing the various printings; a very attractive lot. (289)	£36
96	1938-53, a well written-up study of the head plate flaws on the 2/- to £1 values containing a wealth of information. The stamps comprise 2/- (7), 2/6 (3), 5/- (7), 10/-, 12/6 (a mint block of four) and £1 (2 mint blocks of four). (30)	£35
97	★ — 2/- to £1, a mint selection of shades and perfs. with 2/- (14, with a block of four), 2/6 (10), 5/- (6), 10/- (4), 12/6 (2) and £1 (3) all very fine. (39)	£20
98	★田 — 2/- to 10/-, a selection of mint blocks of four comprising 2/- (3), 2/6, 5/- (4) and 10/- (5) all from later printings and some perf. 13, a very attractive lot. (52)	£30
99	★ — 10/- (7, including one in the first printing); 12/6 (7) and £1 (6) fine mint, some perf. 13. (20)	£30
100	★ 1938 10/- and £1, the scarce first printing very fine mint	£16
101	★田 — 12/6 five shades all in superb mint blocks, one the grey and brownish-orange shade, all except one are marginal or corner blocks. (20)	£24
102	★田 — 12/6 grey and yellow, a superb mint block. B.P.A. Certificate (1967). Cat. £320	£160
103	★田 — £1 perf. 13 four superb mint blocks, two corner and two marginal	£24
104	1953-69 almost complete mint and used, some duplication, a few in blocks of four, an attractive lot on black album pages. (343)	£18
105	1953-68, a fine mint collection including 1953-62 10/- and £1 in strips of five with lower imprint and later issues fairly complete, some in blocks, also a number of covers bearing various issues including a 1953 set to £1 on two first day covers. (221)	£24
British Columbia and Vancouver Island		
106	○ 1860 2½d. pale reddish rose very lightly cancelled in red, one corner blunt	£10
107	★ 1865 CC perf. 14 5c. rose fine mint and 10c. blue very fresh mint, wing margin at right and perfs. at foot cut into design	£15
108	○ — ditto, the same two stamps fine used and cancelled in blue	£15
109	— 5c. rose unused, also a very fair used example and 1865-67 3d. blue shades (3) fair to fine unused, one with wing margin	£18
110	★ 1868-71 CC perf. 12½ 10c. lake fine mounted mint. Photo 2	£20
111	○ — ditto, good used and cancelled in blue, a little faded	£12
112	★ — 25c. yellow unused with some original gum, very fresh but a few ragged perfs. Cat. £30	£12
113	○ — 50c. mauve good used with scarce "10" cancellation	£10
114	1868-71 CC perf. 14 5c. pale red mint and used, the latter with defect at top and 25c. yellow (3, one used), all good to fine	£14
115	★ — 50c. mauve fine mint. Photo 2	£25
British East Africa		
116	③ 1897 20r. pale green (2) and 50r. mauve mint and overprinted "SPECIMEN". Cat. £60	£18

Payment for auction purchases is due on delivery. Arrangements for credit must be made prior to an auction.

British Guiana

Lot	Description	Valuation
117	○ 1850 type set 8c. blue-green cut to shape and design a little cut into in places dated ju 24 1851. A good average example of this rarity. Cat. £350. Photo 2	£120
118	△ 1852 lithographed by Waterlow & Sons, surface-coloured paper 1c. black on magenta, a superb example, lightly cancelled and with enormous margins showing large part of next stamp at right used on large piece showing Demerara c.d.s. dated 12th Aug. 1853. Photo 2 and in colour on front cover	£500
119	○ — 4c. black on deep blue, a pair, fine colour, cut into at top, some surface rubbing and thinned. Very rare in a pair. Cat. £1300. Photo 2	£85
120	○ 1853 imperforate 1c. vermilion, a very exceptional example, beautiful colour and lightly cancelled. Photo 2	£100
121	○ — ditto, very fine with large even margins and very attractive. Photo 2	£75
122	○ — ditto, a slightly paler shade with small to good margins and fine. Cat. £125. Photo 2	£45
123	○ 1853-59 imperforate 4c. deep blue, a beautiful lightly cancelled example with large margins, very exceptional. Photo 2	£40
124	★ — ditto, variety retouched lower label extremely fine and fresh mint. Photo 2	£120
125	○ — ditto, a used example of the same variety, very fine appearance with good margins but thinned. Cat. £100. Photo 2	£18
126	○ 1856 printed by Baum & Dallas surface-coloured paper 4c. black on magenta superb except for horizontal crease, initialled "E.D.W.". Photo 3	£425
127	1860-75, a small collection of the "Ship" type including 1860 1c. pale rose used and 1875 perf. 15 8c. fine mint, the rest all used except one and mostly in good to fine condition. (34)	£30
128	★ 1862 type-set 4c. blue S.G. type 13 fine appearance, thinned in centre. Cat. £150. Photo 2	£30
129	○ — ditto, S.G. type 15 with four thin inner lines fine with nearly full roulettes, very scarce. Cat. £140. Photo 2	£45
130	★ ^(B) 1863 medium paper perf. 12½-13 4c. greyish-blue, a very fine mint block comprising the lower six rows of the sheet with the five right hand stamps of the row above with sheet margins and Waterlow imprint at foot. (65)	£100
131	1876-99, a small mint and used collection with a few 1878-81 provisionals; 1882 local printed 1c. (3) and 2c. (2); 1898 Jubilee 1c. to 15c. mint, also a few covers with various lower values. (67)	£16
132	1900-35, a fine mainly mint collection almost complete with slight duplication, a few "SPECIMEN" stamps including 1931 Centenary set perforated "SPECIMEN". (120)	£40
133	★ 1905 MCA \$2.40 green and violet fine mint. Photo 3	£20
134	1937-66, a fine mainly mint collection, also a few on covers mostly first day, an attractive lot. (151)	£16
135	★ ^(B) Official Stamps: 1875 1c. black, a block (3×4) and 8c. rose, a block (3×3), two stamps defective, the 1c. block shows part of paper-maker's watermark; both blocks mint. (21)	£50

British Honduras

136	1866 unwatermarked perf. 14 1d. and 1/- unused; 1872-79 CC perf. 14 1d. pale blue unused and 3d. red-brown used and perf. 14 1d. blue unused and 1/- green used, also 1882-87 CA perf. 14 1d. blue, 1d. rose and 4d. mauve unused, also 1d. rose bisected and used on small piece, good to fine. (10)	£12
137	△ 1882-87 CA 1d. rose, a block of three bisected stamps used on local front cancelled "c" in oval of bars, addressee's name cut out	£20
138	★ — 1/- grey fine mint and another overprinted "SPECIMEN"	£14
139	⑤ — 1/- grey, 1891-98 \$5 (faded), 1900-01 10c., 1905-07 \$2 and \$5, 1913-21 MCA \$2 and \$5 and 1922-33 MCA \$5 all fine mint except as stated and overprinted "SPECIMEN"	£35
140	1888-89 perf. 14 2c. on 1d., 2c. on 6d. rose, 3c. on 3d., 10c. on 4d., 20c. on 6d. all mint, "two" on 50c. on 1/- mint and used and surcharged in large type 50c. on 1/- mint. (8)	£12
141	☒ — ditto, 2c. on 6d. rose bisected and se-tenant with a whole stamp; 3c. on 3d., 10c. on 4d. and "two" on 50c. on 1/- all used together on envelope registered, heavily cancelled but an attractive combination. (6)	£28

Lot	Description	Valuation
British Honduras 1888-89—contd.		
142 ★	— 50c. on 1/- grey fine mint. Photo 3	£20
143 ☒	— "Two" on 50c. on 1/- grey bisected and se-tenant with a whole stamp on registered envelope with 2c. on 1d., 2c. on 6d., 3c. on 3d. and 10c. on 4d., rather heavy cancellation but attractive	£25
144	1888-89 large type surcharges 2c. on 1d. (13) and four bisected examples, two se-tenant with whole stamps on entires; 3c. on 3d. (15, six used, one on entire); 10c. on 4d. (13, eight used, one on entire with 1891 6c.); 20c. on 6d. (6, one used) and 50c. on 1/- (3, one used). (57)	£15
145 ★	— ditto and other 1889-91 surcharges including "FIVE" on 3c. on 3d. with double surcharge; 1891-98 CA 2c. to \$2 except 50c.; "1899 REVENUE" overprint 5c. to 50c., the latter with 12 mm. overprint; 1900-01 5c. and 10c., also a mint sheet (6×5) of S.G. 43, all mint. (57)	£17
146 ★	1891-98 \$5 overprinted "SPECIMEN" and 1905-07 \$5, a superb mint example of the issued stamp	£25
147 ★	— ditto, a fine mint example of the issued stamp, slight gum creases. Photo 3	£21
148	1902-04 CA 1c. to 20c.; 1905-07 MCA 1c. to \$2, also 10c. to \$5 "SPECIMEN"; 1908-10 1c. to 25c.; 1913-21 MCA 1c. to \$2 with duplicate 25c., \$1 and \$2 and a few later to 1921 including Peace 2c. and 4c. slate overprinted "SPECIMEN" (Cat. £5). (68)	£20
149 △	1905-07 MCA \$5 grey-green and black superb used on small piece. Photo 3	£35
150 ★	1913-21 MCA \$5 purple and black on red, a fine mint corner example. Cat. Photo 3	£45. £21
151 ★	1916 "WAR" overprint in small type on 1c. green, a mint pair with inverted and misplaced overprint. Cat.	£28 £12
152 ★	1922-23 MCA \$5 purple and black on red fine mint. Cat. Photo 3	£48. £22
153	1922-35, a small mainly mint collection, values to \$2 and values to \$5 "SPECIMEN" including the 1935 Jubilee set. (51)	£11
154	1937-69, the fine mint collection with a few used, includes 1937 Coronation perforated "SPECIMEN"; 1938 1c. to \$5; 1948 Wedding \$5 (3, one on envelope) with later issues complete, a very attractive lot. (216)	£28 £28

Burma

155 ★☒	1943 (15th Feb.) perf. 11 no gum 5c. scarlet, a fine unused block (5×2). See S.G. note which states blocks are very rare	£25
156 ☒☒	1945 overprinted "MILY ADMN" 1p. to 10r., thirty complete mint sets in blocks. (480)	£20 £20
157 ★☒	— ditto, a somewhat similar lot. (480)	£20

Canada

158 ①	1851 3d. plate proof in issued colour on thin wove paper, a very fine strip of three from foot of sheet showing imprint	£35
159 ②	— 6d. plate proof in slate-grey overprinted "SPECIMEN" vertically in yellow, also New Brunswick 1860-63 5c. green and 17c. black imperforate plate proofs each in a block of four overprinted "SPECIMEN" vertically in red	£10
160 ○	1852-57 thin wove paper 3d. red (2), one very fine with a scarcer type of cancellation, the other with three large margins, just shaved at lower left corner	£15
161 ○	— 3d. shades (2); medium wove paper 3d. (2) and 6d. brownish grey; 1857 7½d. deep yellow-green and 1857 ¼d. deep rose, mostly fair to good, the last two cut very close	£45
162 ○	1852-57 medium wove paper 3d. red, three good margins close at left and 6d. greenish grey, fine appearance but a little thinned and with small defect at lower right side. Cat. £125	£20
163 ○	1857 imperf. ¼d. deep rose very fine with "37" cancellation, tiny marginal nick in lower left corner. Photo 3	£12
164 ☒	— ditto, very large margins used on envelope, heavy horizontal crease, also 1858-59 perf. 11½ 3d. red, a good example used on small neat envelope	£35
165 ○	1858-59 perf. 11½ ¼d. deep rose very fine. Photo 3	£15
166 ○	— 3d. red fine and lightly cancelled in blue. Photo 3	£20
167 ☒	— ditto, fine used on small entire with indistinct Quebec four-ring numeral. Photo 9	£30 £30

Lot	Description	Valuation
168 ○	1859-1955, a mainly used collection including 1859 10c. (2) and 17c.; 1868-88 values to 15c.; 1893 20c. mint but stained; 1897 Jubilee values to 50c., 1908 values to 20c.; 1915 War Tax 5c. to 50c. unused with gum, stained and various later including 1942 War Effort \$1 mint. (284)	£30
169	1859-1908, a collection including 1897 \$2 (2) and \$5 with heavy smudged cancellations; later Q.V. issues values to 20c..duplicated; 1903-12 20c. mint (2) and 1908 20c. used very fine, very mixed condition, some poor. (173)	£30
170 ○	1859 1c. (3), 5c. (7), 10c. (6), 12½c. (6) and 17c. (3), also 1864 2c. (6) mixed condition, a few good to fine	£30
171 ○	— 1c. (3), 5c. (2), 10c. (3), 12½c. (5) and 17c. (2), also 1864 2c. fair to fine, one 10c. cancelled in blue	£18
172 ★	— 1c., 5c. and 12½c. yellow-green fine fresh unused, the 5c. with some original gum	£20
173 ⊕	— 1c. imperforate plate proofs on thin paper in pairs, one in very deep rose, the other in a paler shade almost as issued	£20
174 ○	— 1c. (11) and 5c. (44) poor to fine, a few 5c. have c.d.s. cancellations. (55)	£16
175 ⊕	— 10c. imperforate plate proof in black-brown on thin paper in a fine pair	£16
176 ⊕	— 10c. imperforate plate proof in brownish purple on thin paper in a fine vertical pair	£16
177 ⊕	— 12½c. imperforate plate proof in blue-green on thin paper in a fine pair	£16
178 ⊕⊕	— 17c. imperforate plate proof in black on thin paper in a fine block of four	£40
179 ⊕⊕	— ditto, a similar block in bright yellow	£40
180 ⊕	1868 engraved die proof of head only similar to the issued type but with head to left in black on piece of greenish glazed card (50×60 mm.), the design a little rubbed at left side	£16
181 ○	1868 thin transparent paper ½c. black, 1c. red-brown, 3c. red-brown and 6c. blackish brown good to fine, the 6c. has a few slightly clipped perfs.	£25
182	— 1c. red-brown mint; 1868-71 ½c., 1c. (watermarked), 2c. (2), 6c. (2), 12½c. (3) and 15c. deep slate, all used, also 1875-78 perf. 11½×12 ½c. mint and used, all good to fine	£25
183 ⊕	1868-71 ½c. black, a superb vertical pair used with Small Queen 2c. deep green on entire to U.S.A. with "MONCTON & CAMPBELLTON" railroad cancellation, a very attractive item	£15
184 ○	— ½c., 1c., 2c. (5), 3c. (13, with a pair), 6c. (4), 12½c. (3) and 15c. (2), also 1888-97 15c. shades (4) all fine to very fine. (33)	£30
185	— ½c. (15, seven unused), 1c. (10, with two on thin paper, one unused) and 2c. shades 20 (all used), mostly fair to good. (45)	£55
186 ★	— 2c. deep green, 3c. brown-red and 12½c. pale dull blue, also 1869 1c. pale orange-yellow fair to good unused, some with part original gum	£35
187	— 3c. shades including two pairs, a variety of cancellations and condition mostly fair to good. (67)	£25
188 ○	— 6c. shades (17 all used) and 12½c. shades (11 two unused), mostly fair to good	£22
189	1868-97, a selection of the 15c. value with a good range of shades and papers (6 apparently unused), mostly fair to good. (37)	£16
190 ○	1869 1c. deep orange (2) and 1c. orange-yellow all with c.d.s. cancellations, fine appearance, some slight faults	£10
191	1870-97, a collection of the Small Queen issues, over thirty unused including 5c. perf. 11½×12 and 1893 20c. and a good selection of used especially of the 2c. and 5c. with two fine strips of four, mixed condition, many fine. (170)	£32
192 ★	1870-93, a mint or unused selection with 1c. bright yellow pair, 2c. deep green, 3c. vermilion (2), 5c. olive-grey, 5c. brownish grey, 6c. yellow-brown, 6c. chestnut (2), 8c. shades (3), 10c. pale lilac magenta (no gum), 10c. carmine-pink, 20c. and 50c., mostly fine. (17)	£25
193 ★	— 1c. bright yellow, a corner block (5×2) showing marginal "ONE CENT" and a block of four; 2c. deep green and block (3×2); 3c. vermilion, a block (4×3) and a strip of four showing marginal "THREE CENTS" and 5c. brownish-grey, a block of four all mint	£20

Lot	Description	Valuation
1870-93—contd.		
194 ○	— 1c., a good used selection of shades, cancellations, etc., with some scarce cork types, some on the scarcer shades, also a few on large pieces (mostly perf. 11½×12) and many with c.d.s. cancellations, the majority fine. (237)	£20
195 ○	— 3c., a fine collection of shades and cancellations, some perf. 11½×12 and a good variety of the fancy types of cork cancellations and many with clearly dated c.d.s.s, some on the earlier shades. An attractive lot. (201)	£20
196 ☒	1873-77 perf. 11½×12, seven envelopes bearing various values to 6c., some in combination and including 1c. bright orange, also two later entires, one with 6c. chestnut used with 1c. and 2c. and another on a front	£10
197 ○	1875 5c. olive-green (8) and 1869 1c. orange and yellow shades (10) mostly fair condition only, one 1c. has New Brunswick c.d.s.	£16
198 ○	1875-78 perf. 11½×12 15c. lilac-grey and 15c. slate both fine	£20
199 ★☒	1882-97 ½c. black shades, two mint blocks each (8×5) with side imprints; two blocks each (6×3) with top and lower imprints, a block (2×4) and a block of four all mint, also used (9). (137)	£14
200 ★	1888-97 printing 2c., 3c., 6c. deep chestnut, also 1893 20c. and 50c. good to fine mint	£11
201 ★	— 5c. brownish grey, a fine mint imperforate pair with left side imprint	£10
202 ★☒	— 10c. brownish-red, a fine mint imperforate block with top margin and part imprint, some gum disturbance in places	£30
203 ★	1893 20c. vermilion, a fine mint imperforate pair showing part lower imprint, some slight thinnings	£30
204 ★☒	— 50c. imperforate (Prussian blue) in a very fine mint block with part top imprint, tiny thin spot on one stamp	£80
205 ★	— 8c. pale bluish grey, a fine mint imperforate pair. Photo 3	£25
206 ★	1897-1922, a small selection including 1897 ½c., 6c., 8c. and 15c.; 1897-98 10c.; 1898-1902 6c., 7c. and 8c.; 1903-12 2c. imperf. in a pair and a strip; 1908 20c. brown, a mint pair (Cat. £20); 1912-21 perf. 8×imperf. 1c. and 2c., 1915 War Tax 5c., 20c. and 50c. and 1922 perf. 12×imperf. 2c. green, some with faults but mainly fine. (43)	£27
207 ★	1897-1908, a mint or unused collection with 1897 Jubilee ½c. to 50c.; 1897-98 ½c. to 10c.; 1898-1902 ½c. to 20c. without shades; 1898 Map 2c. (2); 1903-12 1c. to 50c. without shades but with pair of 2c. imperf., also 1908 Quebec set some with thinning or other faults. (51)	£45
208 ★	1897-1902, a small mint selection including 1897 Jubilee values to 8c.; 1897-98 1c. to 10c.; 1898-1902 ½c. to 20c. with duplicate 7c.; 1898 Map (2) and 1899 surcharges (7). (38)	£20
209 ★	1897 Jubilee ½c. (2), 1c. (3), 2c. (3), 3c., 5c., 6c., 8c. (6), 10c., 15c. (3), 20c. (3) and 50c. (2) fair to fine unused or mint, some in pairs and including 8c. in a vertical strip of five. (26)	£28
210 ○	— ½c., 1c. (24), 2c. (12), 3c. (21), 5c. (3), 8c. (2), 10c. (2), 15c., 20c. and 50c. (2) all good to fine used, a few lower values in blocks or strips. (68)	£20
211 ★☒	— 1c., a block (5×5), 2c. deep green and 3c. carmine each in a block (5×6), all mint with sheet margin on two sides	£15
212 ★☒	— 1c., 2c., 3c., 5c., 8c. and 15c. each in a fine mint block	£16
213 ★☒	— 6c. brown in a superb mint corner block	£18
214 ★☒	— 8c., a very fine mint block (5×5) showing plate number "20"	£25
215 ☉	— 20c., 50c. and \$1 mint and overprinted "SPECIMEN", the \$1 thinned (Holmes Cat. \$80)	£12
216 ★☒	— 50c. pale ultramarine in a very fine mint block	£18
217 ★	— \$1 lake unused with gum slightly disturbed, a little off centre. Cat. £38	£16
218 ○	— ditto, fine used with large "R" in oval cancellation. Photo 3	£20
219 ★	— \$2 deep violet well centred mounted mint, small thin spot. Cat. £75. Photo 3	£35
220 ★	— ditto, mint, a few short perfs. Photo 3	£35
221 ○	— ditto, good used with roller cancellation. Cat. £55. Photo 3	£21
222 ★	— \$3 bistre fine fresh mounted mint. Photo 3	£50
223 ★	— \$4 violet unused with part gum, small thinning. Cat. £95. Photo 3	£45
224 ★	— \$5 olive-green unused with gum but heavily mounted. Cat. £85. Photo 3	£50

<i>Lot</i>	<i>Description</i>	<i>Valuation</i>
225	Ⓟ 1897-98 plate proofs on thick card of the 1c., 2c., 3c. and 8c. in issued colours	£10
226	★ 1903-12 1c. to 50c. (thin spot), also 2c. imperf. single and block and 1908 ½c. to 20c. all mint. (18)	£33
227	★ — 1c. deep green imperforate plate proofs in a pair un gummed, 2c. rose-carmine variety imperf. two mint pairs, one with corner margins; 1916 (Sept.) War Tax 2c.+1c. brown die I, an imperforate un gummed pair and 1924 imperf. 2c. deep green, a mint pair	£12
228	1908-42, a selection with 1908 5c., 7c., 10c. and 15c. all fine used and 1922-42 fine mint including 1922-31 Imperf. 1c. pair, 2c. and 3c.; 1928-29 1c. to \$1; 1930-31 1c. to \$1; 1930 Air 5c.; 1935 1c. to \$1; 1937-38 values to \$1; 1942 1c. to \$1 and also 1939 Royal Visit 1c. to 3c. in mint sheet of fifty and three imprint blocks of each value, a fine lot. (335)	£40
229	1912-35, a mint and used collection with some duplication, includes 1912-21 perf. 8×imperf. 1c. and 2c. (2) all mint; 1922-31 \$1 orange (2 mint) and 2c. green perf. 12×imperf. mint; 1928-29 \$1 (4 used); 1930 Air 5c. (4, two used) and 1935 1c. to \$1 two mint sets. (534)	£32
230	★ 1912-31, a collection of coil stamps mostly in pairs with some duplication, includes S.G. 257-259 in blocks of four, all fine mint. (70)	£20
231	★ 1912-31, a mainly mint collection including coil stamps including 1912-18 50c. shades (3), 1912-21 perf. 8×imperf. 1c. and 2c. and 1922 perf. 12×imperf. 2c. green, mostly fine. (75)	£20
232	★ 1912-31, a mint collection of values to 3c. including coil stamps, some in strips or blocks including S.G. 257 in a block of sixteen and S.G. 258 in a block of thirty-four. (135)	£15
233	★ 1912-29, a selection with 1912-18 1c. to 50c. (2); 1915-16 War Tax (12) including 1915 (Feb.) 5c. to 50c.; 1922-31 values to \$1; 1926 2c. on 3c. both; 1927 both sets and 1928-29 to 20c., also 1c. and 2c. coil stamps in pairs, mostly mint. (59)	£20
234	★ 1912-24, a collection of coil stamps in pairs including S.G. 224a, 224b and 263, also 1922 1c. and 2c. imperf.×perf. 8 in blocks of four. (34)	£20
235	★田 1912-18 1c. to 50c., a fine selection in mint blocks of four with shades of lower values, includes 2c. with hair lines, also booklets and booklet panes of six of the 1c. and 2c., a very fine lot. (220)	£45
236	★田 1912-18 7c. olive-yellow and 7c. yellow-ochre shades (2) all in very fine mint blocks	£12
237	★ 1915-16, a mint selection of the War Tax stamps including pairs and blocks with imperf.×perf. 8 2c.+1c. brown die I in a fine strip (Cat. £24). (79)	£26
238	★田 1915 (Feb.) War Tax overprint 5c. blue and 20c. olive-green each in a fine mint block	£22
239	★ 1916 (Sept.) War Tax 2c.+1c. carmine-red die II mint; 2c.+1c. brown die I with gum but heavily mounted and imperf.×perf. 8 2c.+1c. die I, a mint pair. Cat. £50	£18
240	★ — 2c.+1c. carmine-red die II and 2c.+1c. brown die I both mint. Cat. £34	£15
241	★田 — 2c.+1c. brown die I variety imperf., an unused block without gum and perf. 12×imperf. in a similar block, probably of proof status	£25
242	★ 1917 Confederation 3c. bistre-brown, an imperforate un gummed vertical pair with side margin	£16
243	★ 1917 Confederation 3c.; 1923-24 imperf. 1c. to 3c.; 1926 2c. on 3c. both types; 1927 both sets; 1930-31 1c. to \$1 with coil stamps and a few later to 1932 all fine mint. (66)	£14
244	★田 1922-31 perf. 12 1c. to 10c., a fine selection all in mint blocks comprising 1c. (3), 2c. (7, also one block of six), 3c. (3), 4c. (3), 5c. (3), 7c., 8c., 10c. blue (2) and 10c. bistre-brown shades (3). (110)	£36
245	田 — \$1 brown-orange two mint blocks of four, also two used blocks, one on official circular, straight edge at right. (16)	£18
246	★田 1922-31 imperf.×perf. 8 1c. chrome-yellow thick soft paper, a fine mint block. Cat. £60	£35
247	★田 — 2c. yellow-green, a similar mint block. Cat. £60	£35
248	★ 1922-31 imperforate 1c. to 3c. in pairs and 3c. in a corner block with engine turning at foot; 1931 perf. 12×8 3c. blocks of six, four (2) and a pair and 1926 "2/ CENTS" on 3c., a block of four all mint. (30)	£17

Lot	Description	Valuation
	1922-31—contd.	
249 ★田	— 1c. yellow, 2c. green and 3c. carmine each in a fine mint imperforate block	£12
250 ④⊗	— 1c. imperf., a pair and single used with U.S.A. 1925 Norse-American 5c. and 10c. airmail on flown cover and 3c. imperf. pair with plate number and engine-turning at foot used on flown cover with U.S.A. 5c. airmail (uncancelled)	£15
251 ★	1927 Confederation 1c. to 12c., the set in fine mint imperforate pairs, the 2c., 3c. and 12c. vertical, also 1927 Express 20c. orange in a similar imperforate pair	£35
252 ★	— 1c. (36), 2c. (103), 3c. (26), 5c. (6) and 12c. (17), also Historical issue 5c. (7), 12c. (7) and 20c., all mint, mostly in pairs or strips with imprint and plate number	£16
253 ★	1927 Historical issue 5c., 12c. and 20c. all in mint imperforate pairs, the last two vertical, also 1927 Express 20c. orange in a similar imperforate pair	£25
254 ★	1928-54, a large accumulation mostly of lower values in strips and blocks, many with imprint and plate number, including some booklet panes of the later issues, worth careful inspection. (1162)	£40
255 ④★	1928-47, a collection of airmails some in mint blocks of four including 1930 5c.; four flown covers, one with 1930 5c.; also a few used blocks. (71)	£13
256 ★	1928-29 1c. to \$1 and 1c. and 2c. coil stamps fine mint	£15
257 ★	— 50c. blue and \$1 olive-green mint, the \$1 heavily mounted. Cat. £29	£12
258 ★	— \$1 olive-green, a vertical pair variety imperf. horizontally and a horizontal pair imperf. vertically, superb mint	£24
259 ★	— 1c., 2c. and 5c. each in a fine mint imperforate tête-bêche pair	£40
260	1929-54, a collection of coil stamps mostly in mint pairs or strips, also a number of precancelled pairs and strips and two entires, one with a pair of the 1929 1c. orange. (244)	£15
261 ★	1930-68, a fine mint collection fairly complete except for varieties, coil stamps in pairs, the 1930 \$1 has defect. (364)	£25
262 ★田	1930 50c. blue and \$1 olive-green each in a fine mint block	£30
263	1932 (Dec.) to 1949, a fine mint collection apparently complete, also a few used mostly in blocks including 1935 Jubilee in blocks of four on small pieces and 10c. green in a block of twelve and 1946 \$1 purple in a used corner block of four with imprint and plate number. (77)	£22
264 ★	1932-54, a selection of coil stamps mostly in mint strips with much duplication and 1964 Christmas 3c. scarlet two packs each containing two blocks (5×5) and a few others. (397)	£15
265	1937-53, a large mint and used collection with some duplicated, booklet panes mint and used and coil stamps in pairs, 1946 set to \$1 mint and two 1939 Royal Train covers. (441)	£12
266	1937-64, an extremely fine collection of complete booklets and booklet panes, almost complete with many scarcer items, also a few used, some on entires. (1061)	£75
267 ④田	1942-55, a small selection all in mint blocks of four or larger including 1942 War Effort 6c. blue, a block (3×3); 1950 50c. and 1951 \$1 ultramarine in blocks of four; 1951 Stamp Centenary set and a few later. (133)	£14
268 ④⊗田	1942 Air 6c. blue, a lower left corner block with imprint from the rare Plate 2 (Bileski Canadian Catalogue \$275)	£50
269 ★	1949-69, a fine comprehensive mint collection including some in blocks of four, also 1954-62 1c. to 5c. with phosphor bands in blocks of six. (406)	£20
270 ④田	1951 \$1 ultramarine, a block with top margin and imprint, also a corner block with imprint overprinted "G", both fine unmounted mint	£28
271 ★	Registration Stamps: 1875-92 2c. orange, 2c. vermilion, 5c. yellow-green, 5c. dark green and 8c. dull blue all fine unused with full gum except the 8c.	£10
272 ★	— ditto, 5c. green (2) and 8c. dull blue all fine mint	£12
273	Special Delivery Stamps: 1898-1947, a complete mint and used collection with some duplication, one shade only of the first 10c. green, also Postage Dues (40). (99)	£12
274	— 1898-1920 10c. shades (2); 1922-39 complete, also some in mint blocks including 1938 20c. scarlet in a plate number block; 1942 10c. green and 1946 10c. green (2) each in a plate number block, also Postage Dues 1906-67 all mint and a few others including 1938 20c. scarlet on entire used on day of issue (15th June 1938) (70)	£25

Lot	Description	Valuation
Canada: Special Delivery stamps—contd.		
275 ★	— 1898-1920 10c. green (poor) and 1922-47 complete, also Postage Due stamps (27). (41)	£12
276 ★	Postage Due Stamps: 1906 1c., 2c. and 5c. each in an imperforate pair un gummed (Holmes Cat. \$105)	£25
277 ★	Official Stamps: 1928 Air 5c.; 1937 1c. to \$1; 1942 1c. to \$1; 1946 Peace 7c. to \$1, the 50c. in a block of four, also Special Delivery stamps all very fine mint and perforated "O.H.M.S.". (55)	£30
278 ★	— 1937-38 1c. to \$1; 1942 1c. to \$1; 1946 8c. to \$1 and 1949 2c. and 3c., also Airmail stamps and Special Delivery all perforated "O.H.M.S.". (42)	£10
279 ★	— 1949-63, a complete mint collection. (80)	£28
280 ★	— another fine mint collection with some duplication including 1949-50 50c. in a block (5×2); 1950-51 \$1 ultramarine and Official Special Delivery stamps 10c. green both issues in plate number blocks. (136)	£50
281 ⊕	— 1950 \$1 purple overprinted "G", a fine corner block with imprint	£25
Cape of Good Hope		
282 ○	1853 paper deeply blued 1d. deep brick-red very fine neatly cancelled and head clear	£12
283 ⊗	1855-58 white paper 1d. deep rose-red, 4d. blue and 6d. deep rose-lilac all used on separate envelopes, the 4d. not tied, fair to good, the 1d. with small marginal fault between "N" and "E" of "ONE"	£25
284 ⊗	— 6d. pale rose-lilac cut rather close and smudgy cancellation used on envelope to Derby and re-addressed to Portsmouth	£10
285 ○	1861 Woodblocks 4d. deep bright blue very fine colour and lightly cancelled but cut into on two sides, nevertheless quite attractive. Cat. £700. Photo 3	£65
286 ★	Vryburg: 1899 "2 PENCE" on 6d. mauve, a fine used pair, scarce. Photo 3	£50
Cayman Islands		
287 ⊙	1901-26, a collection of stamps overprinted "SPECIMEN" comprising 1901 ½d. (2) and 1d. (2); 1901-02 ½d. to 1/- two sets; 1907 4d. to 5/-; 1907-09 ½d. to 10/- with both 1/- values; 1912-20 ½d. to 10/- (2); 1921-26 MCA 3d. to 10/- and Script ½d. to 10/-, a very fine lot. (64)	£30
288 ★	1901 ½d. and 1d.; 1901-02 CA ½d. to 2½d.; 1905-06 MCA ½d. to 1/-; 1907-09 MCA ½d. to 5/- and 1908 CA 1/- all mint. (19)	£16
289 ★	— ditto; 1901-02 CA ½d. to 1/-; 1905-06 MCA ½d. to 1/-; 1907 MCA 4d. to 1/- and 1907 ½d. on 1d. all mint. (19)	£20
290	1901 ½d. and 1d., a mint and used selection including mint blocks of four of ½d. (4) and 1d. (5); used singles and ½d. in used blocks of four and six and 1d. used blocks of four (3), also a registered envelope with a block of four and a pair of each value, also ½d. and 1d. (2) overprinted "SPECIMEN". (116)	£14
291 ⊕	1901-02 die proof in black on white card of the head plate dated "29 OCT 01" and marked "BEFORE HARDENING"	£75
292	1901-50 various mint and used on stock cards including 1907 MCA 1/- used; 1907-09 MCA values to 1/- (5) mint; 1921-26 MCA values to 5/- mint; 1935 Jubilee set in used blocks on pieces and a few later. (202)	£22
293 ★	1901-02 CA ½d. (5, one Specimen), 1d. (3, one Specimen), 2½d. (7, with a block of four and one Specimen), 6d. (2) and 1/- (2) all mint	£12
294 ○	— ½d. (3), 1d. (5), 2½d. (6, with a block of four), 6d. (6, with a block of four) and 1/- (3) all fine used, also a registered envelope to London bearing ½d., 2½d., 6d. and 1/- used with 1901 Q.V. ½d. and 1d. (2). (31)	£36
295 ⊗	— 1d. pair and 2½d. used on registered envelope to New York with Jamaica oval registered transit mark on front and 2½d. (6) and 6d. (3) on registered envelope to New Jersey, very fine	£16
296 ★ ⊕	— 1/- orange, a fine mint corner plate number block	£20
297 ★ ⊕	1905-06 MCA ½d. to 1/-, the set in mint blocks of four. (20)	£28
298 ★	— ½d. (6, with a block of four), 1d. (2), 2½d. (11, with two blocks of four), 6d. (6, with a block of four) and 1/- (7, with a block of four), all mint. (32)	£40
299 ⊕	— 1/- orange, an irregular block of eight very lightly cancelled and used on small piece, a very scarce item	£50
300 ○	— ½d. (3), 1d. (3), 2½d. (3), 6d. (3) and 1/- (5, with a pair), all good to fine	£22

Lot	Description	Valuation
1905-06—contd.		
301	☒ — ½d., a block (6X2) and a pair used together on large piece; ½d. (8) and 1/- (2) used on registered envelope to Dresden; ½d., 1d. and 2½d. all in blocks of four on registered envelope to London and ½d., 1d. and 6d. on registered envelope to Boston, Mass.; the last two with Jamaica transit marks. (39)	£25
302	○田 — ½d., a corner block (5X2) with plate number, 2½d. three blocks of four, one on piece with Jamaica transit mark and 6d. a block of four used on small piece	£18
303	★ 1907 MCA 4d. to 5/-, a fine mint set	£30
304	★ — ditto, another mint set, the 5/- very slightly rubbed. Cat. £68	£26
305	○ — ditto, a very fine used set	£40
306	★田 — 4d., 6d. and 1/- each in a fine mint plate number block	£40
307	— ditto, a mint and a used example of each value	£13
308	☒ — 4d. one blunt corner used on envelope to Boston, Mass.; 6d. very fine on envelope to Montserrat showing "TOO LATE" and Jamaica transit mark, also 1907 ½d. on 1d. carmine used with 2½d. bright blue on a front to London, an interesting lot	£15
309	1907 "One/Halfpenny" on 1d. two mint and one fine used	£12
310	★ — ditto, mint and "ID" on 5/- salmon and green mint	£20
311	★ 1907 "½D" on 5/- fine mint. Photo 3	£15
312	★ — ditto, mint and showing the variety dent in frame line under first "A" of "CAYMAN" Photo 3	£20
313	○ — ditto, fine used. B.P.A. Certificate (1928). Photo 3	£20
314	△ — ditto, a fine pair used on piece with Jamaica registered transit mark partly on stamps. Photo 4	£50
315	★ — "ID" on 5/- fine mint. Photo 3	£18
316	○ — ditto, very fine used. B.P.A. Certificate (1928). Photo 3	£24
317	★ 1907-09 MCA ½d. to 1/-; 1912-20 MCA ½d. to 5/- with some paper varieties; War Stamps (6); 1921-26 MCA 3d. to 5/- (2) and Script values to 1/-; also 1932 Centenary ½d. to 5/- all mint. (57)	£26
318	★ 1907-09 MCA ½d. to 5/- with some duplication, also 2½d., 3d. and 6d. overprinted "SPECIMEN", also CA 1/- a block of four and a single and 1908-09 ½d. (13, one "SPECIMEN"), all mint. (54)	£20
319	○ — a fine used selection, values to 6d. including some blocks of four and 4d. used on piece with lower values and 1908-09 ½d. (37) including a pair with Rural Post cancellation; 1908 provisional envelope without stamp but with "Pd. ½d. W.G. McC." in red ink as issued by the postmaster W. G. McCausland owing to shortage of ½d. stamps. (81)	£30
320	○ — 2½d. (2), 3d. (2), 4d. (3), 6d. (2), 1/- (2) and 5/- (2) and 1908 CA 1/- all fine used, some on small pieces, also a registered envelope to New York bearing ½d. and 1d. in blocks of four, 2½d. and 1/- singles and 1908 ½d. brown. (26)	£30
321	☒ — a fine selection of covers (9), some with various values in combination, one bearing ½d. and 4d. and another bearing 5/-, all addressed to England or U.S.A. and most showing Jamaica transit marks. (24)	£30
322	★田 — 4d. black and red on yellow, a fine mint corner plate number block	£35
323	○ — ditto, a very fine used pair. Photo 4	£16
324	★ 1908 CA 10/- green and red on green fine marginal mint. Photo 4	£16
325	★ — ditto, another fine mint, not marginal	£15
326	△ — ditto, fine used on small piece. Photo 4	£20
327	△ — ditto, an almost identical lot. Photo 4	£18
328	Ⓢ — ditto, overprinted "SPECIMEN" and 1932 Centenary 10/- black and scarlet perforated "SPECIMEN"	£18
329	★ 1908, the scarce "1d." on 4d. black and red on yellow surcharged for revenue purposes, variety surcharge inverted mint. B.P.A. Certificate (1948). Photo 4	£15
330	☒ 1908 provisional ½d. envelopes (2) issued by the postmaster W. G. McCausland during shortage of ½d. stamps, marked "Pd. ½d. W. G. McC." in red ink and with c.d.s. cancellations of Oct. 13th and 14th	£30
331	1912-20 MCA ½d. to 10/-, a mint selection with shades and paper varieties, also values to 10/- (2) overprinted "SPECIMEN", also used blocks of four of values to 1/- some with Cayman Brac cancellations, also two entires. (105)	£28

Lot	Description	Valuation
332	1917-20, a mint and used collection of the War Stamp issues including blocks, some on envelopes, a few in combination with other issues, a very attractive lot. (288)	£25
333	★ 1917 (Sept.) War Stamp 1½d. on 2½d., the rare type (S.G. 55) fine mint. Photo 4	£50
334	1921-26 MCA 3d. to 10/-; Script ½d. to 10/-, a collection including ½d. to 10/- in mint blocks of four, one 10/- has small mark on face. (111)	£40
335	Ⓟ — 2d., a perforated colour trial in red with corner margins on thick unwatermarked paper	£30
336	Ⓟ — 4½d., an imperforate colour trial in blue on similar unwatermarked paper. Photo 4	£15
337	★ 1932 Centenary ½d. to 10/-, a fine mint set. (12)	£35
338	○ — ditto, a very fine lightly cancelled set. (12)	£40
339	— ½d. to 1/- in mint blocks of four and a few singles of values to 3d. mint and used and ½d. to 2½d. perforated "SPECIMEN", also a large piece of a registered package bearing 6d. and 5/- very fine. (63)	£22
340	⊠ — 2d., 2½d. pair and 3d. on envelope and 6d. block of four on piece of brown paper, also various values to 2½d used as postage due stamps on eight envelopes from Antigua, Ascension and Turks Islands. (33)	£12
341	★ 1932-50 various mint on two stock cards, some in blocks of four including 1938-47 values to 10/- (2); 1948 Wedding 10/-, a corner pair; 1949 U.P.U. in singles and blocks and 1950 set with duplicates including 5/- (3) and 10/- (2). (148)	£10
342	1935 Pictorials ½d. to 10/- mint and ½d. to 1/-, 5/- and 10/- used all fine. (23)	£14
343	★ — ½d. to 10/- mint with duplicates of values to 5/- and 1935 Jubilee set. (30)	£12
344	★⊠ — ditto, a fine set in mint blocks of four. (48)	£30
345	○ — ditto, a fine used collection some in blocks and some with scarcer cancellations, the lot includes six envelopes bearing various combinations of values to 2½d. (114)	£18
346	⊠ — 5/- (3) and 10/- (2) used on envelopes, one of each in combination with other stamps, used from Little Cayman or Cayman Brac. (12)	£22
347	1937 Coronation; 1946 Victory; 1948 Wedding and 1949 U.P.U., a mint and used collection many in blocks of four and on envelopes with a variety of cancellations including Stake Bay, West End, The Creek, Boddentown. The lot includes seven Silver Wedding 10/- used. (187)	£15
348	★⊠ 1938-47 ½d. to 10/- with colour changes but without perf. varieties all in mint blocks. (56)	£12
349	★ — ½d. to 10/- with some duplicates and shade and perf. varieties; includes 10/- (12, with two blocks of four), all fine mint. (60)	£12
350	⊠⊠ — 2/- (13), 5/- (10) and 10/- (12) all in mint blocks of four or larger. (35)	£20
351	○ — a very fine used collection some on pieces and with a good variety of cancellations, some in blocks of four. The lot includes 2/- (9), 5/- (13) and 10/- (10). (316)	£25
352	⊠ — another used selection nearly all on complete envelopes in various combinations and a variety of cancellations, mostly low values to 6d. but including 2/- (2) and 5/- (2). (99)	£10
353	1950-68, a fine mint and used collection including 1950 ½d. to 10/- used on front; 1953-59 to £1 mint and used with much duplication of some lower values; 1962 ½d. to £1 mint and used, later issues to 1968 mint and used; also 1969 ½d. to £1 and ¼c. on ½d. to \$2 on £1 mint. (292)	£18
354	1950, a mint and used collection, the used with a variety of cancellations, some on envelopes or pieces and with a few blocks of four, also 1956 (July) to 1968, a mainly mint collection apparently complete. (190)	£15
355	1953-59, a fine mint and used collection, the used mostly on complete envelopes or pieces and with a variety of cancellations, the lot includes 10/- (8, with a block of four on envelope) and £1 (5). (67)	£26

Rural Post Cancellations

- 356 ○ An interesting selection on K.E. VII issues with East End on ½d., 1d. strip of three, 2½d. and on 1908 ½d. (3); West Bay on 1d., 2½d. and 1908 ½d. (2 pairs), also a pair of ½d. with large "RURAL POST/COLLECTION" with a few other unusual cancellations (10). (31)
- £30

Lot	Description	Valuation
Cayman Islands—contd.		
357	☒ 1907-09 ½d. green on envelope with large framed "RURAL POST/COLLECTION/GRAND CAYMAN" cancellation, rare. Photo 9	£50
358	☒ 1907-09 2½d. on envelope with same cancellation as last addressed to Mobile, Ala., U.S.A. and re-addressed to Cuba, the stamp has a normal Georgetown c.d.s. as well as the Rural Post cancellation. Photo 9	£60
359	☒ 1907-09 ½d. on envelope cancelled by the framed "WEST BAY/Grand Cayman/RURAL/Post Collection" in violet, very fine and scarce. Photo 9	£45
360	☒ 1907-09 2d. cancelled by the framed "EAST END/Grand Cayman/RURAL/Post Collection" in violet showing the error "G" for "C" in "Collection", very scarce. Photo 9	£30
361	☒ 1907-09 3d. on envelope with a slightly blurred impression of the same cancellation with "c" normal. Photo 9	£30

SALE No. 3610

Second Session at 14.30 hrs.

Ceylon

- 362 ○ 1857 blued paper imperforate 6d. purple-brown and 1857-59 white paper 6d. purple-brown each in a very fair pair, a little cut into in places and other small faults. Scarce in pairs £35
- 363 △ — ditto, single examples of the same two stamps each on a small piece showing London arrival mark in red partly on the stamp, each cut into on one side but quite attractive £15
- 364 ○ — ditto and 1857-59 white paper imperf. 1d. blue, 2d. yellow-green pair, 5d. chestnut and 1/- dull violet all very fair to good and lightly cancelled £30
- 365 ○ — ditto (2) and 1857-59 white paper imperf. 2d. yellow-green (2), 5d. chestnut and 1/- dull violet shades (2) mostly with faults £20
- 366 ○ — ditto; 1857-58 blued paper ½d. lilac and 1857-59 1d. both shades, 2d. both shades, 5d. chestnut, 6d. purple-brown, 10d. orange-vermilion and 1/- dull violet fair to good, some a little cut into £50
- 367 ○ 1857-58 blued paper ½d. lilac large margins and fine, pencancelled, also white paper ½d. lilac very fair with small even margins. Cat. £79 £20
- 368 ○ 1857-59 imperf. 1d. (3, with a pair), 2d. deep green and 1/- dull violet all used, also 2d. yellow-green unused but cut close; 1861 clean-cut perfs. 5d. and 1/-; intermediate perfs. 1d., 2d. and 9d. and rough perfs. 1d. (3, one on bleuté), 4d., 6d. (2), 9d. (2, one unused), 10d. (2) and 1/- mostly fair to good. (22) £35
- 369 ○ — 1d. (2) and 2d. (3); 1861 clean-cut perfs. 5d. and 1/- (3) all used; 1861 intermediate perfs. 2d. unused and rough perfs. 1d. (3, two on bleuté), 6d. (2), 9d. (2), 10d. (2) and 1/- (2) all used, mostly fair to good. (21) £20
- 370 △ — 2d. deep green; 1861 clean-cut perfs. 1/- dull violet (2) and 1863-67 CC perf. 12½ 1d., 9d. deep brown (4), 1/- violet (2) and 2/- Prussian blue (3) all used on small pieces, also 2d. orange-yellow used with 1866 3d. rose perf. 12½ on large piece, fair to good. (15) £12
- 371 △ — 2d. deep green (2) and 5d chestnut used together on small piece, the 5d. superb. both 2d. a little cut into, lightly cancelled and very attractive appearance £20
- 372 ○ — 8d. brown very lightly cancelled full margins on two sides, close at top and at left. Cat. £250. Photo 4 £30
- 373 ○ — 10d. orange-vermilion, lightly cancelled and with clear profile, small to close margins, design just shaved at top right £10
- 374 ○ 1861 watermark Star intermediate perf. 14 to 15½ 1/- (2) and rough perf. 1d. blue (4, one on blued paper), 4d. (2), 6d. olive-brown and 10d. (2); 1862 unwatermarked 1d. blue and 1864 Star 10d. vermilion, also 1863-67 CC perf. 12½ values to 1/- some in pairs and one 1d. with major re-entry, mixed condition, mostly fair to good. (27) £15
- 375 ○ 1862 unwatermarked perf. 13 1d., 6d. deep brown (3, one thinned), 9d. and 1/-, also 1864 Star perf. 12½ 10d. (3), fair to good £12
- 376 — 1d., 6d., 9d. and 1/-; 1864 glazed paper perf. 12½ ½d. pale lilac and 1864 Star perf. 12½ 10d. (2) all good to fine used except the ½d. which is fair unused £13

Lot	Description	Valuation
Ceylon—contd.		
377 ○	1863-66 CC perf. 12½ ½d. (3, two unused), 1d. (2), 2d. grey-green, 6d. (3), 10d. (2) and 2/- (2) all fair to good used except as stated	£10
378	— ½d. (2 mint), 1d. (2 used), 2d. grey-green (2, one mint), 2d. orange-yellow, 5d. pale sage-green, 6d. (3), 10d. (2) and 2/- a pair all used	£12
379 ○	1867 CC perf. 12½ 1d. (2), 2d. shades (6), 4d. (2), 5d. (4), 6d. (5), 8d., 9d. (6), 10d. (3), 1/- (5) and 2/- (4) fair to fine. (38)	£16
380 ★	— 2d. shades (2), 4d. (2), 6d., 8d., 9d. (2), 10d. (2) and 2/- good to fine unused or mint	£13
381 △	— 2d. greenish yellow two strips of three each used on a small piece showing Colombo and Galle c.d.s.'s in red and cancelled "A" and "B" respectively, an attractive lot	£20
382 □	1872-80 CC perf. 14 96c., a block of four; 1882 20c. on 64c., a block (3×3); 1885-87 28c. on 32c., a block (2×3) and 56c. on 96c., a block of four all used, also a few other mint and used blocks to 1892. (83)	£12
383 ★	1882-1900, a small mint selection including 1882 16c. on 24c. and 20c. on 64c. (3); 1885 provisionals CC watermark (9); 1885-87 CA provisionals (5) and CC 1r.12c. on 2r.50c.; 1886 25c. yellow-brown variety value in yellow; 1887 CC perf. 14 1r.12c. dull rose; 1880-90 provisional varieties (8); 1899 1r.50 on 2r.50c. and 2r.25c. on 2r.50c.; 1899-1900 1r.50c. and 2r.25c.; also Official stamp 1895-96 1r.12c. (37)	£20
384 ★	1903-05 CA 15c. to 75c.; 1904-05 MCA 30c., 1r.50c. (2) and 2r.25c. (2); 1910-11 MCA 2r. a corner pair and 5r. (2); 1921-34 Script 1r. (2), 2r. and 5r. and 1935-36 pictorial set 2c. to 1r. in blocks or strips of four. All fine mint. (61)	£15
385 ⊙	1912-25 MCA 50r. dull purple overprinted "SPECIMEN" diagonally in black and 100r. overprinted "SPECIMEN" horizontally in red, the latter somewhat stained and with rust marks. Cat. £80	£20
386 ⊙	— 500r. dull green fine mint overprinted "SPECIMEN". Cat. £100	£30
387 ⊙	— ditto, with gum but rather stained and discoloured. Cat. £100	£15
388 ⊙	— 1.000r. purple on red very fine mint and overprinted "SPECIMEN" in small type. Cat. £150	£60
389 ⊙	1921-34 Script 50r. dull purple and 100r. grey-black very fine mint overprinted "SPECIMEN". Cat. £55	£20
390 ⊕	1938-49 50c. black and mauve perf. 13×11½, a fine mint corner block	£12
391 ⊕	1964-69 60c. multicoloured variety blue and green omitted (S.G. 494b), a fine mint unmounted block. Cat. £180	£25

Cyprus

392 ○	1882-92 CA die II 6p. olive-grey and 12 pi. orange-brown both very fine	£12
393 ★	1903 CA ½ pi. to 45 pi., a very fine mint set. Cat. £80	£30
394 ★	— ditto, the set with full original gum but heavily mounted. (10)	£25
395	— 30 pa. and 4 pi. to 45 pi. mint and ½ pi., 1 pi. and 2 pi. used all very fine	£22
396 ★	— 9p. and 45p. fine mint, very slight rust spots. Cat. £52	£18
397 ★	1924-28 MCA £1 purple and black on red fine mint. Photo 4	£17
398 ★	1928 Anniversary set ½ pi. to £1 mint, the latter with one blunt corner	£16
399 ★	— ½ pi. to £1 and 1934 Pictorial set ½p. to 45p. all very fine mint	£22
400 ⊕	1938-51 1p. orange, the scarce perf. 13½×12½, a fine mint corner block of four showing plate number "2"	£50
401 ○	1960 Republic overprint 250m., 500m. and £1 all very fine and lightly cancelled. Cat. £37.25	£16

Dominica

402 ★	1874 CC perf. 12½ 1d., 6d. and 1/- good to fine with some original gum, the 1d. heavily mounted. Cat. £40	£15
403 ★	1877-79 CC perf. 14 ½d. to 1/- fine fresh mint or unused. Cat. £52. (6)	£22
404 ★	— ½d. to 4d. and 1/- in similar condition as last. Cat. £37. (5)	£16
405	1882 "½" in black on half 1d., a mint pair; "½" in red on half 1d., a used pair; 1883 (Mar.) "Half-penny" on half 1d., a mint pair and 1886 ½d. on 6d. and 1d. on 1/- mint. (8)	£10

Lot	Description	Valuation
	Dominica—contd.	
406 ★	1883-84 CA ½d. and 2½d.; 1886 CA ½d. and 4d. and 1887-88 1d., 2½d., 6d. and 1/-, also Postal Fiscals 1879-86 1d., 6d. and 1/- in blocks of four and singles, all mint. (23)	£20
407 ★	1903 CC ½d. to 5/-, a mint set, some low values slightly soiled. Cat. £42. (10)	£15
408 ★	1907-08 MCA ½d. to 5/- mint, also 5/- used on envelope to Germany and fine. (11)	£22
409	1908-21 MCA ½d. to 5/- without shades; 1921 Script ½d. to 2/6; 1923-27 Script ½d. to 5/- and MCA 3/- and 5/-, also £1 "SPECIMEN" and 1935 Jubilee set all mint. also War Stamps (11, some used). (57)	£17
410 ⊙	1923-27 Script ½d. to 5/- and MCA 3/-, 5/- and £1 all fine mint and overprinted "SPECIMEN" except two low values which are perforated. (21)	£10
411 ★	1923-27 MCA £1 black and purple on red fine mint	£22
412 ★	— ditto, a similar lot	£22
413	1937-68, a mainly mint collection apparently complete, also a few envelopes mostly first day and bearing commemorative issues, a very fine lot. (224)	£24
414	1953-69 (Oct.), a fine mint and used collection with some duplication and including a few blocks of four, practically complete. (336)	£15

Falkland Islands

415	1877-1902, an unused and used collection including 1877 red frank on white laid paper cut to shape; 1878-79 unwatermarked 4d. used and 6d. and 1/- mint; 1883-1902 ½d. to 1/- with a good selection of shades and 1885-91 watermark sideways 1d. used and 4d. (3, one used), fair to fine. (53)	£30
416	1878-79 unwatermarked 6d. and 1/-; 1883-1902 C.A., a selection with shades comprising ½d. (4), 1d. (6), 2d. (2), 2½d. (2), 6d. (3), 9d. (3) and 1/- (2) all unused or mint, also 1d. orange-red a pair and 2d. (2) used on piece; 1885-91 1d. and 4d. unused and 1898 5/- mint. (32)	£15
417 ⊙	1883-1902 2d., 6d. and 9d.; 1898 2/6 and 5/-; 1904-12 3/- and 5/- and 1912-20 MCA 5/- purple and £1 all mint and overprinted "SPECIMEN"	£20
418 △	1896 6d. yellow, a pair on small piece and 1898 5/- red, also on small piece, all with the small South Georgia handstamp across the stamps, very scarce. Both items have a few clipped perfs. Photo 4	£75
419 ★	1898 2/6 deep blue and 5/- red both mint, the 5/- slightly soiled	£12
420 ★	— ditto, a somewhat similar lot	£12
421	1904-35, a fine mostly mint collection including 1904-12 values to 3/- with shades of lower values; 1912-20 MCA values to 10/-; War stamps (25); 1921-29 Script to 3/- with shades; 1929-36 values to 1/-; 1933 Centenary set to 2/6, also ½d. to 2d., 4d., 1/- and 2/6 perforated "SPECIMEN" and 1935 Jubilee set; also a few used low values with scarcer cancellations. (147)	£36
422 ★	1904-12 MCA ½d. to 3/-, also 2d., 6d. and 1/- overprinted "SPECIMEN"; 1912-20 MCA ½d. to 10/- with both 5/- and a few duplicates of lower values; War Stamps (5); 1921-29 Script ½d. to 3/- two sets with some shades and 1935 Jubilee set all mint. (64)	£23
423 ★	— 2½d. deep blue mint and fine. R.P.S. Certificate (1967). Cat. £27	£12
424 ★	— 5/- red mint, also another overprinted "SPECIMEN"	£15
425 ★	1912-20 MCA 3/-, 5/- red (2), 5/- purple and 10/- all fine mint	£14
426 ☒	— 10/- fine used on envelope to New York; 1933 Centenary 4d., a block of four used with ½d. on large envelope and a few later mostly commemorative low values on envelopes. (28)	£20
427 ★	— £1 black on red fine mint	£21
428 ★	1928 2½d. on 2d. purple fine mint. B.P.A. Certificate (1955). Photo 4	£75
429 ★	1929-36 ½d. to £1 complete with shades except 4d. deep orange, fine mint. (14)	£24
430 ★	1933 Centenary ½d. to £1, a superb mint set mostly corner or marginal, the 1/- in a pair with imprint. Photo 4. (13)	£155
431 ⊗	— ½d. (32), 1d. (35), 1½d. (7), 2d. (14), 3d. (19), 4d. (17) and 6d. (5) all fine mint, some in blocks and with imprint. Cat. £80.70. (127)	£24
432 ☒	— ½d. to 4d. used on large envelope to Argentina. As the Argentine Post Office refused to recognise these stamps the recipient was charged 1.24 pesos to obtain delivery; also sixteen various used low values to 1/- mostly on small pieces. (22)	£10

Lot	Description	Valuation
Falkland Islands—contd.		
433	⊗田 1935 Jubilee 1/- slate and purple, a superb unmounted mint block, one stamp the extra flagstaff variety	£175
434	⊗ — ditto, another example of the same variety used on envelope with the three lower values, very fine	£220
435	1937-68, a very fine mint collection with some 1938-49 issue used including £1 (2); later issues complete, a fine lot. (142)	£32
436	⊗田 1952 ½d. to £1, the set, also Dependencies 1944-45 Graham Land and South Orkneys sets all in fine mint blocks of four. (11)	£22
Falkland Islands Dependencies		
437	1944-56, a fine mint collection including a specialised study of the 1946-49 Map stamps, also South Georgia 1963 ½d. to £1; British Antarctic Territory 1963 ½d. to £1 and a few later. (374)	£22
Fiji		
438	★田 1871 3d. pale yellow-green, a fine mint block, one stamp with tiny black spot on crown	£20
439	1875 2d. on 6c. on 3d. green fine used; 1876-77 wove paper 6d. (8, with a block of four) and laid paper 1d., 2d. on 3d. and 1877 4d. on 3d. all in mint blocks of four and a few later including 1892 5d. on 6d., a mint block in the 3 mm. setting. (46)	£22
440	1903 CA ½d. to 5/-; 1904-09 MCA 1d. and 1/-; 1906-12 MCA ½d. to £1 all mint, the £1 somewhat rubbed, also 1912-23 MCA values to 6d. used and £1 with fiscal cancellation	£25
441	★ — values to 6d. with blocks of 2d. and 5d. with a few later K.E. VII; 1912-23 MCA values to 5/- with 1/- white back in a block; 1935 Jubilee set and Postage Due 1918 set in blocks of four all unused except four. (87)	£8
442	★田 1906-12 MCA £1 purple and black on red, a superb mint marginal block. Photo 4	£120
443	★田 1912-23 MCA ½d. to 2/6 and 1922-27 Script 1d. violet to 5/- all in very fine mint blocks. (84)	£22
444	★田 1938-55 ½d. to £1 with both dies of 1½d. and 6d. all in mint blocks of four without perf. varieties, also a few duplicates to 5/- and a few later to 1951 in blocks of four. (173)	£26
445	⊗田 1953 Coronation 2½d.; 1953 Royal Visit 8d. and 1954-56 ½d. to £1 all in superb mint blocks. (68)	£20
446	⊗田 1954 Health pair and 1959-63 ½d. to £1 all in fine mint blocks. (56)	£18
447	⊗田 1962-66 values to 10/-; 1963 Games; 1963 Red Cross; 1963 Compact; 1964 Jamboree; 1964 Airmail and 1966 World Cup all in fine mint blocks. (100)	£12
448	○ Postage Due 1917 (Jan.) 2d. black, perfs. clipped at top and 1917 (April) ½d. black and 1d. black (3) all good to fine	£20
Gambia		
449	1869-72 unwatermarked imperf. 4d. brown unused with good margins and part original gum and 1874 CC imperforate 4d. pale brown used and 6d. blue unused both very fair. Cat. £139	£24
450	○ 1880-1953, a small used collection including 1880 CC perf. 14 ½d. to 3d. and 6d.; 1904-06 MCA 2d. and 6d.; 1922-27 Script ½d. to 10/- and MCA 5/-; 1938-46 ½d. to 10/-; 1948 Wedding £1 and 1953 ½d. to £1 all fine. (96)	£25
451	⊗田 1938-46 3d. (4), 1/- (4), 1/3 (12), 2/- (14), 2/6 (8), 4/- (12), 5/- (12) and 10/- (14) all in superb mint blocks of four or six. (80)	£20
Ghana		
452	⊗田 1965 New Currency overprints 6p. on 6d. variety overprint inverted, a fine mint corner block (3×3). Cat. £72	£15
Gibraltar		
453	★ 1886 (Jan.) ½d. to 1/-, an unused set most with full gum, the 6d. part gum only. Photo 4	£50
454	★ 1886 (Dec.) ½d. to 1/- except 2½d.; 1889 (July) 5c. to 75c.; 1889-95 5c. to 5p. and 1898 2d. to 1/- all mint, the 1886 1d. soiled and the 1/- with small tear at foot. (30)	£21

Lot	Description	Valuation
Gibraltar—contd.		
455 ★	1903 CA ½d. to 8/- mint, the 2/- stained	£12
456 ★	— £1 dull purple and black on red fine mint. Photo 4	£70
457 ★	1904-07 MCA ½d. to 4/- and 1907-11 MCA ½d. to 4/- all mint. (16)	£25
458 ★	— £1 dull purple and black on red very fine mint. Photo 5	£75
459 ★	— ditto, a very similar example. Photo 5	£75
460 ★	— ditto, mint but some surface rubbing. Cat. £140. Photo 5	£55
461 ★	1907-11 MCA 8/- purple and green fine mint. Photo 5	£35
462 ★	1912-24 MCA ½d. to £1 without shades but with two 1/- values and 1918 War Tax ½d. (2) all mint. (13)	£15
463 ★	1921-27 Script ½d. to 4/- with both 2/- shades; 1925-32 2/6 to £1; 1931-33 1d. and 3d. and 1935 Jubilee set all mint. (26)	£25
464 ★	— 8/- dull purple and green fine mint. Photo 5	£20
465 ★	1925-32 £5 violet and black very fine fresh mint. Photo 5	£175
466 ★	1937 to 1953 Coronation; 1954 Royal Visit and 1960-68 complete and Postage Dues (3) all fine mint. (106)	£16
467 ⊕	1938-51 £1 orange, a superb mint corner block (3×3)	£20
468 ★	1953 (Oct.) ½d. to £1, the fine mint set. (14)	£12

Gold Coast

469 ⊕	1884-89 2/-; 1889-94 5/- and 10/- dull mauve and red; 1902 CA £1; 1904-07 MCA 2/6 and 1921-25 Script 15/- die II and £2 all fine and overprinted "SPECIMEN" £12	£12
470 ⊕	1907-13 MCA, the unissued 10/- green and red on green mint and overprinted "SPECIMEN" (See note after S.G. 68). Cat. £35. Photo 4	£16

Grenada

471 ☒	1771 (13th June) entire from Grenada addressed to Mr. Alexander or James Gordon, Merchts. of Madeira at the Jamaica Coffee House, London showing two Bishop marks, one in red, also an 1820 (16th Aug.) entire to Edinburgh showing straight line "GRENADA/AUG 29" in circle	£16
472 ★	1861-62 unwatermarked 1d. green (2) and 6d. rose, also 1863-71 Small Star 1d. green and 6d. rose fair to fine mint or unused	£34
473 ○	— 1d. shades (8) and 6d. shades (4) mostly fair to good	£45
474	1863-1902, a collection all mint or unused except twenty-two, includes 1875 1/- deep mauve unused; 1883 1d. orange (S.G. 27) used; 1883 1/- pale violet used; 1888-91 provisionals (16); 1895-99 ½d. to 1/-, also a few overprinted "SPECIMEN" and 1898 2½d. ultramarine (3). (101)	£32
475 ○	1863-71 Small Star rough perf. 14 to 16 1d. green and 6d. rose each in a very fine used strip of four, lightly cancelled and attractive	£15
476 ○	— 1d. green (10), 6d. rose (6), 6d. orange-red (4), 6d. dull rose-red watermark sideways (torn into) and 6d. vermilion (5) with an additional fine pair of 6d. rose on entire and 6d. vermilion used on front only, creased. (29)	£30
477 ○	— 6d. rose and orange-red shades, six very fine used pairs, an attractive lot	£20
478 ○	— 6d. dull rose-red watermark sideways, three good to fine examples. Cat. £75	£20
479	1873-91, a fine unused and used selection with a few scarcer items including S.G. 21c. and 22c. both used and 23 mint, 27 used, 38d. on small piece and 44 used. (37)	£45
480	1873-81, a selection of the 1d. and 6d. values all used except six, with some duplication including three pairs, also 1875 1/- deep mauve, a pair and two singles used, mostly fine. (51)	£26
481	1881-91, a small unused and used collection including 1881 ½d. mauve (8), 2½d. (4) and 4d. (7) and Broad Star 2½d. (2); 1883 large "POSTAGE" on 1d. (2), also S.G. 29 used and a few later surcharges, mainly fine. (35)	£28
482	1883-1931, a mainly mint collection including 1883 CA ½d. to 1/- mint and used; 1895-99 CA ½d. to 1/-; 1898 2½d.; 1902 CA ½d. to 5/-; 1913-21 values to 10/- and 1921-31 Script values to 3/-, also a few Postage Dues some on entires. (83)	£26
483 ★	1883 1d. carmine, a mint block comprising two tête-bêche pairs. Cat. £28	£12

Lot	Description	Valuation
Grenada—contd.		
484 ○	1886 1d. on 1½d. orange variety surcharge double and another showing error "PFNCE" both good used	£18
485 △	— ditto, a fine used pair on small piece, one stamp showing error "THRFE"	£12
486 ★	1902 CA ½d. to 10/- mint, also a set except 1d. and 2/- overprinted "SPECIMEN" (22)	£18
487 ★	1904-06 MCA ½d. to 5/-; 1906-11 complete to 10/- all mint; also 1906 ½d. to 2½d. (2) and 1908-11 6d. overprinted "SPECIMEN" and three others. (31)	£23
488 ★	1904-06 MCA 10/- fine mint. Cat. £50. Photo 4	£20
489 ★	1913-35, a very fine mint collection with values to 10/- (4), some duplication and shades of most values, also values to 10/- overprinted "SPECIMEN" (29). The lot includes War Tax stamps (25, some used on envelopes). (105)	£21
490	1937-70, a fine mainly mint collection with some perf. varieties of the 1938-50 issue; later sets complete mint with some used on first-day covers, a very attractive lot. (304)	£20
491	1953-69 (Sept.), a fine mint and used collection with a good deal of duplication of the 1953-59 set, most later sets complete mint and used and some in used blocks of four, a very attractive lot. (580)	£25
492	Postal Stationery: 1881 1d. and 1½d. postcards unused with design originally produced as an essay for G.B. Scarce	£15
Guyana		
493 ★	1966-68, a mint collection almost complete, also Postage Dues (4). (101)	£13
Hong Kong		
494 ⊙	1903 CA 1c. to \$10, the fine mint set overprinted "SPECIMEN". (15)	£10
India		
495 ○	1854 imperforate ½a. die I (5), die II and die III (4); 1a. die I (2), die II (2) and die III; 4a. various printings (9, five cut to shape) and 2a. (4) mainly poor to fair and all used except the ½a. die II. (28)	£16
496 ☒	— 4a. second printing two singles used together on small envelope (flap missing), close margins, one slightly cut into, both stamps from the centre row of the sheet showing the usual horizontal crease. Photo 9	£35
497 ○	— ditto, fourth printing, a pair cancelled "1/9" in diamond of bars, small margins, a little cut into at foot	£12
498	1855-1948, an unused and used collection with a few earlier Q.V. issues; 1926-33 watermark Multiple Stars values to 25r. mint; 1929 air set; 1937 set to 25r. mint, also Official stamps including Q.V. mint blocks overprinted "Service"; K.E. VII to 25r. and 1912 to 25r.; "C.E.F." and "I.E.F." issues and a few Convention States. (377)	£28
499	1855-1901, a mainly used collection of Q.V. issues including 1866 6a. purple both types, also Official Stamps including the unissued 6a.8p. slate with large "Service" overprint mint. (129)	£18
500	1902-55, a mint and used collection including 1902-11 15r. used and 25r. used with parcel post cancellation; 1926-33 to 25r. mint; 1937 set to 25r. and later pictorials almost complete, also Official stamps and "C.E.F." overprints including the 1900 unissued 1a.6p. mint. (524)	£45
501 ★☐	1902-11 3r. brown and green, a complete mint sheet comprising eight panes each (4×3) with interpanneau margins, very unusual and in fine condition for such a large sheet. (96)	£80
502 ⊗☐	1937 1r. to 25r. all in superb mint blocks	£28
503	Convention States: a large nearly all different collection mint and used, values to 25r. with Gwalior 1928-36 set to 25r. mint and Jind 1927-37 to 25r. mint; also a few Native States. Would make a good foundation for a larger collection. (1244)	£40
504	— Gwalior 1885-96 ½a. II variety "Gwalior" in pair with normal and 9p. I, a mint pair, also Official Stamps 2a. blue variety fourth character in lower word missing in pair with normal; Jind S.G. 07-09 and Patiala various mostly varieties including 1891-96 4a. variety "PATIALA" omitted mint and used, also Official stamps S.G. 08a., 09a. and 010a. mint and British Somaliland four stamps including S.G. 07a. mint. (33)	£22
505 ○	— Gwalior 1938-49 3p. to 25r., a very fine used set. Cat. £32. (13)	£12

Lot	Description	Valuation
	India—contd.	
506	Patiala: 1885 8a. error "AUTTIALLA" unused; 1891-96 1a., a mint block, one with "PATIALA" omitted and 4a. mint and used singles each with "PATIALA" omitted, also Official stamps S.G. 04b. mint and 05c. used. (9)	£16
507	Bussahir: 1895-1901, a fine specialised collection including many of the 1895 issue; numerous unused blocks and complete sheets, also used examples (93) and remainders and reprints all contained in two black loose-leaf albums. A fine basis for further extension. (1003)	£125
	Ireland	
508 ★	1922 Dollard print 2/6, 5/- and 10/- all superb mint examples with corner margins	£20
509 ★田	1927-28 Wide date 5/- rose-red, a mint corner block of four showing the variety circumflex accent on "a" of "Saorstai" on second stamp, some foxing	£18
510 ★田	1939, a complete 2/- booklet numbered "18.39" very fine and rare (Feldman No. IB @ £80)	£25
511 ★田	1946, a complete 2/- booklet numbered "28-46" (Feldman Cat. £45), also another exploded example of the same booklet	£30
512	1946-63, a collection of booklets including numbers "29-46", "33-50" complete and also exploded, "36-53", "37-54", "38-56", "40-59" and "44-63" all very fine, also 1964 2d. and 4d. booklet panes of six used on separate envelopes	£20
	Jamaica	
513	1860-1911, a small selection all mint except four and comprising 1860 2d. used and 6d. (3, two used); 1870-83 CC 1d. blue pair, 2d. and 6d. mint; 1883-97 CA 1d. blue, 2d. rose (2), 2d. grey, 2d. slate, 2/- (3) and 5/- (2); 1890 2½d. on 4d. error "PFNNK" used and 1905-11 MCA, 4d. red-brown, 4d. black on yellow and 5d. all mint. Cat. £94. (22)	£35
514	1860-1904, a mainly mint collection with some duplication including 1870-83 CC 1d. blue, 3d., 6d. and 1/- (2) and perf. 12½ 2/- (2) and 5/- (2); 1883-97 CA 1d. blue, 2/- (2) and 5/- (2) mint and 1890 2½d. on 4d. error "PFNNY" used. (82)	£21
515 ○田	1870-83 CC 1/- dull brown, a used block, one stamp variety "S" slight vertical crease, very fine appearance and the variety is completely free from cancellation	£32
516 ★	1901-11, a fine mint collection complete with a good deal of duplication and including four "SER.ET" errors. (74)	£22
517 ★	1903-04 CA 5d. grey and yellow, a mint pair, one stamp error "SER . . ET", very scarce. Cat. £130. Photo 4	£60
518 ★	1910 MCA 1/- black on green, a mint vertical strip of three, one showing the "S" variety, very scarce. Cat. £100. Photo 5	£60
519	1912-35, a mainly mint collection including 1912-20 MCA ½d. to 5/- with shades; War stamps with two inverted overprints; 1919-21 ½d. to 10/-; 1921-29 Script ½d. to 10/- (2) and 1935 Jubilee, also eight interesting entires. (90)	£20
520	1937-68, a mainly mint complete collection with some duplication; includes some in blocks of four and a few first day covers. (156)	£25
521 ○	Cancellations: 1889 1d. mauve and Official 1890 1d. rose each used in Cayman Isles with two different types of Grand Cayman cancellation but not very clear strikes	£10
	Kenya, Uganda and Tanganyika	
522 ★	1903-04 CA ½a. to 8a. and CC 1r., 2r., 3r., 4r. (2), 5r. (2), 10r. (2), 20r. and 50r. all mint and overprinted "SPECIMEN". (19)	£25
523 ⑤	1922-27 Script £2 green and purple and £5 black and blue both mint and overprinted "SPECIMEN", the latter vertically in red. Cat. £60	£20
524 ⑤	— £50 black and brown mint and overprinted "SPECIMEN" vertically in red, a little climatically stained. Cat. £80	£24
525 ★田	1938-54 50c. bright purple and black, a mint top marginal block, one stamp variety rope not joined to sail. Scarce. Cat. £35.30	£16
	Lagos	
526 ★	1874-75 CC perf. 12½ 1d. to 1/- (both types), one 3d. only, all fair to good unused, some with trace of original gum, a few perfs. slightly stained. Cat. £77. (7)	£20
527 ⑤	1884-86 2/6 olive-black and 5/- blue; 1887-1902 10/- green and brown and 1904 CA 2d., 5/- and 10/- all overprinted "SPECIMEN", the 1887-1902 10/- is diagonally in ms.	£10

Lot	Description	Valuation
Leeward Islands		
528 ★	1890-1911, a mint collection including 1890 ½d. to 5/- (2); 1897 ½d. to 1/-; 1902 CA ½d. to 5/-; 1905-08 MCA ½d. to 1/- and 1907-11 MCA ½d. to 5/-, mostly fine. (53)	£25
529 ★田	1905-08 MCA ½d. (2) and 1d. to 1/- and 1907-11 MCA ½d. (2), ½d., 1d. (2) and 2d. to 5/- all in mint blocks, a few slightly rubbed or foxed. (80)	£23
530 ★	1912-35, a fine mint collection including 1912-22 MCA to 5/- (4) and later issues to 1935 complete with 1928 10/- and £1. (52)	£21
531 ★	1937-53, a mint collection including 1938-51 £1 (3, with S.G. 114). (35)	£15
532 田	1938-54, a selection on envelopes or pieces with a variety of cancellations (Antigua, Montserrat, St. Kitts and Virgin Islands) including £1 (3) and 1954 \$4.50 (5), also 1954 set mint. (85)	£18
533 田	1938-51 10/- green and red on green and £1 brown-purple and black on salmon each in a mint corner block (3×3). (18)	£18
534 ○	Cancellations: 1890-1935, a collection including early issues used in Antigua, Dominica, Montserrat and St. Kitts, some on entires, mostly low values, also a few later issues to 1935 Jubilee set. (87)	£10
Long Island		
535 ★	1916 on pale green paper ruled with horizontal grey lines ½d. blue fine, some slight grease stains. Cat. £60	£35
536 ★	— on thin horizontally laid paper 1d. black, 1d. blue, 1d. mauve and 1d. red fine but somewhat stained by previous mounts	£50
537 ★	— 1/- black and 1/- mauve in similar condition as last	£25
Malaya		
538 田	Federated Malay States: 1900 overprinted on stamps of Perak 5c. and \$1; 1900 CC \$1 and 1922-34 Script \$1, \$2 and \$25, also Perak 1895-99 \$1 to \$25 all mint and overprinted "SPECIMEN", the \$1 Script has a double overprint. (11)	£15
539 田	— ditto, \$25 green and orange mint and overprinted "SPECIMEN". Cat. £45	£15
540 田	— ditto, as last, another example without gum and a little discoloured. Cat. £45	£10
541	Johore: 1891 "TWO CENTS" on 24c. green mint and used each showing the error "CENST"	£18
542 田	— 1922-40 Script \$50 and \$100 both fine mint and overprinted "SPECIMEN". Cat. £83	£20
543 田	— ditto, \$500 fine mint and overprinted "SPECIMEN". Cat. £150. Photo 5	£40
544	Negri Sembilan: 1898-99 1c. on 15c. green and violet fine used and 4c. on 8c. purple and ultramarine surcharged in blacks, mint but has stain on gum	£12
545	Pahang: 1889 10c. slate used; 1890 2c. rose (S.G. 6) unused and used; 1891 2c. on 24c. types "E" used and "F" unused and 1899 on Perak 25c. green and carmine unused, good to fine. Cat. £42.85	£15
546 △	— 1897 (Aug.) 2c. on half of 5c. blue and 3c. on half of 5c. blue used together on small piece with neat c.d.s. dated "7 NO 97"	£20
547	Perak: 1880-81 2c. brown types c (3), d (5), e, f (8, one used) and g all fair to fine unused or mint except as stated, also two forgeries. (20)	£22
548	— 1883 (July) surcharged vertically upwards, "E" of "PERAK" wide mint and used, also all letters narrow unused and used, fine. Cat. £52	£20
549 ★	— 1884-90 2c. rose ("E" wide) variety overprint inverted and 1886 2c. rose error "FERAK" (3, one in pair with normal), all mint, the first creased. Cat. £37	£14
550 ★	— 1886 "ONE CENT/PERAK" on 2c. surcharged vertically, no stop, fine mint. Cat. £27	£11
551 ○	— 1887 surcharged vertically "ONE CENT/PERAK" (S.G. type 11) in black, fine and scarce. Cat. £40	£12
552 ★	— 1889 1c. on 2c. S.G. type 14 but "CENT" in Roman (upright) letters as in type 17 with part original gum, rather heavily mounted. Cat. £27	£10
553	— Official Stamps 1889 overprinted "P.G.S." 2c. (no stop after "S"), 6c., 8c., 10c., 12c. brown-purple and 24c. green (CA) all mint and 12c. blue used	£15
554 ★	— ditto, 2c., 4c., 6c., 8c., 10c. and 12c. blue (off centre), all variety wide space between "G" and "S", the 2c. is in pair with normal, all mint. Cat. £67	£25

Lot	Description	Valuation
Malaya: Perak Official Stamps 1889—contd.		
555	— ditto, 6c. (3, one used); 8c. (3, one used) and 10c. used, one of each of the 6c. and 8c. have wide space between "g" and "s". Cat. £26	£10
556	— ditto, 24c. green (CC) mint and fine used	£20
557	— ditto, 1894 (June) overprinted "Service" variety overprint inverted, mint and fine used	£10
558	Selangor: 1881-82 CC 2c. brown variety "s" of "SELANGOR" inverted mint, also 1882-83 CA 2c. brown types a (used), b (2), k (3) and m all good to fine unused or mint except as stated	£10
559	— 1883-91, a small selection comprising S.G. 21 (2) and 22 (2) in a mint block of four, 22 used, 24 used (2), 30 with double overprint (not listed), 41 (variety "ELA" broken), 42 (7, with a block of four) and 44 (2) all mint except four	£16
560	★ Straits Settlements: 1879 5c. on 8c. and 7c. on 32c.; 1884 4c. on 5c.; 1884 (Aug.) 2c. on 5c.; 1884 (Sept.) "8" on 8c. on 12c., a vertical pair and 1891 10c. on 24c. variety narrow "o", all mint, the first off-centre	£12
561	— 1880-91, a small mint and used selection including S.G. 22, 51 (mint); 1883 (Apr.) 2c. on 8c. (2) and 2c. on 32c. (2); 1884 4c. on 5c. blue (2), 8c. on 12c. blue (2) and 8c. on 12c. dull purple; 1884 (Sept.) "8" on 8c. on 12c. and 1885 3c. on 5c. blue. Cat. £75.75. (18)	£25
562	○ — 1880 (Apr.) "10" on 32c. types (a) and (g) good to fine	£12
563	○ — ditto, type (g) very fine with part of firm's name in blue on stamp. Cat. £32	£12
564	○ — ditto, another fine example of the same type	£12
565	○ — ditto, types (g) and (k) used together in a vertical pair, scarce. Photo 5	£50
566	○ — ditto, type (i) fine and lightly cancelled. Cat. £50. Photo 5	£20
567	○ — ditto, another fine example of the same type. Photo 5	£20
568	○ — ditto, type "1" lightly cancelled, off centre and somewhat stained. Cat. £50. Photo 5	£16
569	Ⓢ — 1902 CA \$100 purple and green on yellow fine mint and overprinted "SPECIMEN". Photo 5	£24
570	Ⓢ — ditto, another example of the same stamp mint but with a few rust stains. Photo 5	£18
571	Ⓢ — ditto, another similar example, also 1904-06 MCA \$25 grey-green and black similarly overprinted	£30
572	Ⓢ — 1906-11 MCA \$500 purple and orange mint and overprinted "SPECIMEN". Cat. £160	£50
573	Ⓢ — 1912-23 MCA \$25 and \$100 fine mint and \$500 unused without gum and rather stained, also 1921-33 Script \$2 mint, all overprinted "SPECIMEN"	£25
574	★田 1937 K.G. VI \$100 Revenue stamp in a fine mint block with top margin	£50
575	★ Sungei Ujong: 1881-82 2c. brown S.G. 3 (3) and 4; 1882 overprinted "su" (3); 1884 4c. brown S.G. 35 and 37 and 1886-87 2c. rose overprinted with S.G. type 7 all mint	£12
576	— 1882-84 10c. slate type (a) used and type (b) fine mint. Cat. £33	£14
577	★ — 1885-90 2c. rose S.G. 38 double overprint (not listed) and 1886-87 2c. rose S.G. type 8 variety double overprint (unpriced), both mint	£20
578	○ — 1889 2c. rose overprinted with S.G. type 5 but with stop variety "UNJOG" fine and with red cancellation of bars. Photo 5	£30
579	Ⓢ — Trengganu 1921 Script \$25, \$50 and \$100 all mint and overprinted "SPECIMEN". Cat. £95	£30
Maldiv Islands		
580	1906 2c. (2), 4c., 5c. (5), 15c. and 25c. all mint except two 5c. used	£24
Malta		
581	○ 1860 blued paper ½d. buff, a good clearly cancelled example, small corner crease. Cat. £120. Photo 5	£30
582	★ 1861-63 white paper ½d. buff fine, a small corner thin. Cat. £80. Photo 5	£18
583	○ — ditto, a good used example. Cat. £45. Photo 5	£15
584	1863-67 CC perf. 14 ½d. bright orange, 1868-71 CC perf. 12½ ½d. buff-brown (unused); 1878-80 CC perf. 14 ½d. dull orange and ½d. golden yellow (unused) and 1882 CA ½d., fair to fine	£18

Lot	Description	Valuation
Malta 1863-67—contd.		
585	★ — ½d. brown-red, good colour, a few blunt perforations. Cat. £45. Photo 5	£14
586	★ 1885-1958, a good mint collection including 1885 set to 1/- with shades; 1899 CC 2/6; K.E. VII values to 1/-; 1914-22 MCA to 2/- with 1/- (7); 1919-20 MCA 2/6; 1922-26 to 5/-; 1926 "POSTAGE" overprint 5/- and 10/-; 1928 10/-; 1938-43 to 10/-; 1948-53 to £1; 1948 Wedding £1; 1956-57 set to 10/- and a few later. Cat. £209. (284)	£48
587	★ 1903-04 CA ½d. to 1/- and 1904-11 MCA ½d. to 5/- mint, a few heavily mounted. (19)	£12
588	★ 1914-53, a mint selection mounted on approval book leaves including 1914-22 MCA values to 5/- with the five shades of the 1/-; 1919 MCA 2/6 grey-green; 1922 Self-Government 2/6 and 5/-; 1922-26 set to 10/-; 1926 overprinted "POSTAGE" set to 10/-; 1938-43 set to 10/- and 1948 Wedding £1, also Postage Dues (15) all fine. (105)	£32
589	⊗⊠ 1921-22 Script 6d. dull and bright purple, a mint block (6×5), some staining. Cat. £90. (30)	£35
590	⊗⊠ — 2/- purple and blue on blue, a very fine mint corner block with control number	£68
591	⊗⊠ — ditto, another fine block with lower sheet margin	£65
592	⊗ — ditto, a fine mint pair	£32
593	⊗ — ditto, a fine mint single	£16
594	★ — ditto, mint, a little off centre	£12
595	⊗⊠ 1922 Self-Govt. overprint MCA 3d. and 1/- and Script ½d., 2½d. and 6d., also 1922 ½d. on 2d. all in mint panes of sixty. Cat. £106.80	£25
596	⊗⊠ — MCA 2/6 and Script 2/- each, a mint block of four, the latter with corner margins and plate number	£18
597	⊗⊠ — Script 2/-, a fine mint block (3×2) with lower sheet margin	£18

Mauritius

598	○ 1848 early impression 1d. vermilion [4], a very fair example of this rare stamp, a little torn into at top right corner. Cat. £1200. Photo 5	£75
599	○ 1848 worn impression 1d. red on bluish [3] and [10], good examples with margins all round, one with red "15" rate additionally	£35
600	○ 1859 Lapirot 2d. deep blue early impression, a pair [7 and 8], one with the reversed "N" in "PENNE" rare but with little or no margins. Photo 5	£65
601	1859 2d. blue, the plate of 1848 re-engraved by Mr. Sherwin, an autotype illustration from the reprinted sheet, also two similar sheets of the 1d. value which Sherwin also re-engraved but which was never put into use	£6
602	1859-77, a selection including 1858-59 4d. and 6d.; 1859 6d. and 1/- (both very fine used); 1862 perf. 14 to 16 6d. (pair and single unused); 1863-72 to 5/- (2) and 1876-77 surcharges (6), mixed condition, also Sherwin illustrations of sheets. (71)	£35
603	○ 1859 Dardenne 1d. dull vermilion, a good example with margins on three sides, slight creases. Photo 5	£25
604	○ — 2d. pale blue fine marginal and attractive, slightly foxed. Photo 5	£20
605	○ 1862 intermediate perf. 14 to 16 1/- deep green, a fine fairly well centred example, a little foxed. Cat. £55. Photo 5	£20
606	○ — ditto, fine appearance and lightly cancelled, slightly thinned at left, scarce. Cat. £55. Photo 5	£15
607	★ 1863-72 CC perf. 14 1d. shades (4), 2d. shades (4, with a vertical pair), 3d., 4d. (3), 6d. blue-green (2), 6d. dull violet (2), 9d., 1/- blue (2) and 5/- (2) mostly good to fine mint, a few have some clipped perfs. (21)	£22
608	○ — 1d. shades (7), 2d. shades (5), 3d., 4d. (3), 6d. dull violet (2), 6d. blue-green (4), 1/- yellow (3), 1/- blue (2) and 5/- (2), fair to fine used. (29)	£10
609	★ 1876 "HALF/PENNY" on 9d. (4, one with inverted surcharge but one corner damaged), also "HALF/PENNY" on 10d., a block of four and three singles, all mint. (44)	£15
610	1878 surcharges (10); 1879-80 CC 2c. to 2r.50c.; 1882-83 surcharges (3), 1882-83 2c. to 25c.; 1885-91 2c. to 50c.; 1885-91 surcharges (9) and later to 1902, all unused but five, mainly good to fine. (58)	£17
611	★⊠ 1878 (Jan.) 2c. dull rose, 8c. on 2d., 13c. on 3d., 17c. on 4d., 50c. on 6d. and 2r.50c. on 5/- all in fine mint blocks of four and 4c. on 1d., a mint strip of four with lower imprint, a nice lot	£20

Lot	Description	Valuation
Mauritius—contd.		
612	Ⓟ 1879-80 2r.50c., an imperforate die proof in black on glazed card marked "AFTER HARDENING" and dated "Oct 29 1877" and initialled "R.D." in ink	£20
613	Ⓟ 1893 1c. die proof in black on glazed card marked "BEFORE HARDENING" and dated "21 MAR 93"	£15
614	★ 1900-10, a mint selection with 1902 4c. to 2r.50c., 1902-05 3c. to 5r.; 1904-07 1c. to 1r.; 1910 1c. to 5r. and Express Delivery (5). (54)	£16
615	★ 1913-54, a mint collection with 1913-23 to 10r.; 1921-34 to 10r.; 1938-48 2c. to 10r. (2); 1948 Wedding; U.P.U. set; 1950 1c. to 10r.; 1953-54 2c. to 10r. and a few Postage Dues. (133)	£20
Montserrat		
616	☒ 1845 (14th Mar.) letter from Montserrat to London with an account of the relief being given by the government to victims of the earthquake in 1843 marked 1/- in ink	£12
617	★ 1876-1948, a collection with Q.V. 1d. values (7); 1903 CA ½d. to 2/6 mint, also a set with the 5/- overprinted "SPECIMEN"; 1903-08 MCA ½d., 2d. (2), 2½d., 3d. and 1/- and 1908-13 to 6d., also 5/- all mint; 1914 5/- overprinted "SPECIMEN"; 1916-23 MCA to 5/-; 1922-29 Script to 5/-; 1932 Tercentenary set to 1/- and 1938-48 set to £1 all mint. (134)	£32
618	1876 CC 1d. and 6d. unused; 1880 CC 4d. blue used; 1884-85 CA ½d. (2 unused), 1d. (2 unused), 2½d. red-brown (2, one unused); 2½d. ultramarine (2, one unused), 4d. mauve (2, one unused) and 1884 perf. 12 1d. unused, good to fine. (14)	£10
619	★ — 1d., a good unused example showing the inverted "s" variety rather heavily mounted, scarce. Cat. £100. Photo 6	£40
620	★ 1903 CA ½d. to 2/6 and CC 5/-, a mint set with duplicate 2½d. and 1/-	£15
621	1903-08 MCA ½d. to 5/- (rubbed), 1908-13 ½d. to 5/- with some duplication of lower values all mint, also 1903-08 MCA 1/- in a used block of four. (34)	£18
622	★ 1908-13 MCA 5/- red and green on yellow and 1914 MCA K.G. V 5/- red and green on yellow both mint. Cat. £33	£12
623	☒ 1908-13 MCA ½d. to 5/-, the set on six registered envelopes to Germany, very fine	£12
624	1916-23 MCA ½d. to 5/- mint, also a few duplicates some used and 1922-29 Script ½d. to 5/-, also with some duplicates unused and used; 1935 Jubilee set and War Stamps (3). (71)	£14
625	★ 1932 Tercentenary ½d. to 5/-, a fine mint set, also 1/-, 2/6 and 5/- perforated "SPECIMEN"	£28
626	☒ — ½d. to 1/- and 5/- fine used on three registered envelopes to England	£22
627	1937-51, a mint collection, some values of the 1938-48 in blocks of four, also five envelopes bearing 1948 Wedding and others. (102)	£10
628	1953-68 (July), a mainly mint collection including 1953-58 \$4.50 type I, two mint and one on envelope and later issues complete mint. (92)	£20
Natal		
629	○ 1857 imperforate 1d. buff and 1d. blue very fair but both have defects. Cat. £185	£25
630	○ — 3d. rose pen-cancelled, thinned and creased. R.P.S. Certificate (1968)	£15
631	☒ — ditto, a cut into example used on envelope, just tied by blue cancellation and showing large "6d." handstamp and Cape Packet Devonport c.d.s., the stamp has black ink mark on face. Photo 9	£20
632	○ — 6d. green, faint embossing and somewhat defective. R.P.S. Certificate (1968). Cat. £120	£20
633	Ⓢ 1902-03 CC 5/-, £1, £5 and £10; 1904-08 MCA £1-10s. and 1908-09 MCA 10/- and £1 all overprinted "SPECIMEN", the £1-10s. without gum and rubbed on surface	£32
634	— £1-10s. fine used and 1908-09 10/- mint and £1 fine used	£21
635	Ⓢ — £20 red and green mint and overprinted "SPECIMEN", off centre to top. Cat. £180	£35

Write or telephone your bids. Foreign language correspondents are available at all the offices of the Uncommon Marketeers.

Lot	Description	Valuation
Nauru		
636 ★	1916-23 12½ mm. overprint ½d. to 1/-; 1923 13½ mm. overprint ½d. to 2d.; De La Rue 2/6, 5/- and 10/- and 1920 Bradbury Wilkinson 2/6 mint, some climatically stained including the 10/-. (21)	£18
637 ©	1918 Waterlow Print 10/- indigo-blue fine mint and overprinted "SPECIMEN"	£12
638 ★	1924-48 rough-surfaced greyish paper ½d. to 10/-, the fine mint set. Cat. £30.	(14) £12
Nevis		
639 △	1858 (Aug.), a large piece bearing Great Britain 6d. lilac in a strip of four clearly cancelled "A09", one stamp vertically creased. Rare. Photo 9	£65
640 ©	1861 greyish paper perf. 13 6d. grey and 1866 white paper perf. 15 1d., 4d. and 1/- yellow-green all overprinted "Specimen" diagonally in manuscript	£25
641	1861 greyish paper perf. 13 1d. and 4d. unused and 1/- used; 1866 perf. 15 4d. used; 1878 litho. 1d. used and 6d. unused, also 1879-80 various mint and used to 4d.; 1883 ½d. provisional used and postal fiscals (3). (25)	£15
642	1878 lithographed perf. 11½ 1d. vermilion-red; 1879-80 CC 1d. lilac-mauve; 1882-90 CA 1d. lilac-mauve; 2½d. red-brown (2, one used), 4d. blue used; 6d. green no gum and probably cleaned and 1/- shades (2), also 1883 "NEVIS ½d." on half 1d. in violet and in black each used on separate small pieces, all mint except as stated	£20
643 ★	1879-80 CC 1d. and 2½d. and 1882-90 CA ½d. to 1/- complete fair to fine unused or mint. Cat. £69.60	£18
New Brunswick		
644 ○	1851 3d. bright red fine with small even margin showing part of St. John c.d.s. on stamp as well as part grid, very attractive. Cat. £65. Photo 6	£25
645	— ditto and 6d. yellow both defective and 1860 values to 17c.; Nova Scotia 1851 3d. (2) and 6d. (2), all very defective and 1860-63 values to 12½c. including 5c. unused (4, fair to good) and Prince Edward Island (6) and four Nova Scotia stampless covers showing different "3" and "5" markings. (48)	£30
646 ○	— 6d. olive-yellow superb appearance and very lightly cancelled, slight thinnings. Photo 6	£65
647	1860-63 1c. (6), 2c. (4), 5c. (8, one sap-green), 10c. (2), 12½c. (3) and 17c. (3), nine are used, fair to fine. (26)	£15
Newfoundland		
648	1857-61, a selection comprising 1857 1d.; 1860 thinner paper 3d. green and 1861 1d., 2d., 4d., 5d. brown, 6d. (2, one used); 6½d. (2), 8d. (2) and 1/-, the latter genuinely used but cut into, fair to fine unused or mint except as stated. (13)	£20
649 ★	— another selection all unused comprising 1857 1d. and 5d.; 1860 3d. (2) and 1861 thin paper 2d., 4d., 5d. both shades, 6d., 6½d. pair and single and 1/- mostly fine. (13)	£22
650 ★	1857 1d. (2, one faded) and 5d. fine; 1860 thinner paper 3d. (2) and 5d. chocolate-brown (2), fair to fine unused	£15
651	1857-97, a small collection including 1857 1d. mint; 1860 3d. and 5d. unused; 1866 thin paper 13c. mint; 1887 10c. black mint and 1896-97 re-issues ½c., 1c. both colours and 3c. both colours mint. (42)	£14
652 ★	1861 1d. chocolate, 2d., 4d. (2), 5d., 6d. (2), 6½d., 8d. and 1/- (2), fair to fine mint or unused. (11)	£13
653	1861-1919, a collection including a few early issues mostly not fine; 1897 Cabot two mint sets and a used set except 30c.; 1897-1901 ½c. to 5c. two mint sets; 1910 litho values to 15c. mint with two 6c. type "B"; 1911 Coronation two sets to 15c. with 8c. greenish blue mint (2) and 1919 Caribou set without shades mint, also New Brunswick (8), Nova Scotia (15) including 1851 1/- repaired and regummed and probably cleaned. (193)	£40
654 ★	1861 thick paper 1/- deep rose-lake fine mint. Cat. £50. Photo 6	£18
655 ★	1866-97, a small mint or unused selection including 1866 thin paper 2c. (2), 13c. and 24c.; 1887 values to 10c.; 1894 to 12c. and 1896-97 1c. both colours, 2c. and 3c. brown, fair to fine. (33)	£12
656	1866-97, a collection all mint or unused except four, including 1866 13c., 1868-73 3c. vermilion mint but one perf. short; 1876-79 rouletted 1c., 2c. and 5c. mint; 1887 10c. mint and 1896-97 ½c. orange-vermilion mint, mostly good to fine. (54)	£28

Lot	Description	Valuation
657	1866 thin yellowish paper 2c. mint, 5c. used, 10c. used, 13c. unused and used and 24c. (2, used); medium white paper 2c. (4, two used), 10c. (2, used) and 12c. (7 with a mint block and one used). (20)	£27
658	★ — 5c. brown very fine mint from right of sheet showing small part of imprint. Photo 6	£20
659	1868-97, a small mainly unused selection including 1868-73 1c. (2), 3c. vermilion, 3c. blue used, 5c. black and 6c. (4, one used), 1876-79 rouletted 1c.; 1887 10c. black and 1896-97 ½c. orange-vermilion with a few others. (24)	£20
660	★ ^(B) 1896-97 re-issue ½c. orange-vermilion, a mint block (4×2) with complete lower imprint, slight gum disturbance on a few stamps	£15
661	★ 1897 "ONE CENT" on 3c. type I surcharged in red mint, somewhat off-centre. Cat. £250. Photo 6	£75
662	★ — surcharged with type II in black and type III in red, large part original gum, very rare, two only stated to exist. Photo 6	£500
663	★ 1897 Cabot set; 1897-1918 Royal Portraits; 1908 2c. Map; 1910 1c. to 15c. with both 6c., also perf. 12×11 1c. error "NFW" (2) all mint, also 1910 9c. used. (45)	£18
664	1897-1947, a mint and used collection including 1897 Cabot set to 60c.; 1910 Litho 8c., 10c. and 15c. mint; 1911 Coronation set with both 8c.; 1919 Caribou set; 1931 Air 50c. and \$1 unwatermarked and watermarked mint and 1933 Gilbert set mint. (194)	£35
665	★ 1897 Cabot set 1c. to 60c., 1897-1918 ½c. to 5c. and 1919 Caribou 1c. to 36c. with shades of 2c. and 3c., fair to fine unused or mint. (37)	£10
666	★ — ditto, with duplicate 15c.; 1897-1918 ½c. to 5c.; 1908 2c., 1910 Guy set with both 6c., also some perf. varieties including 1c. perf. 12×11 with "NFW" error in block of four. (46)	£18
667	☒ 1899-1946 various, all on complete envelopes including 1919 Caribou 6c.; 1920 3c. on 15c. (2) and 3c. on 35c.; 1923-24 9c. (2), 11c. (2), 12c. and 15c.; 1928 9c. pair and a few later. (58)	£15
668	★ ^(B) 1910 lithographed perf. 12×11 1c. green, a block (5×2) from lower left corner of sheet and including two horizontal pairs imperf. between	£50
669	★ 1911 Recess-printed 6c. to 15c. all mint except the 9c. which is soiled. Cat. £24	£10
670	★ — ditto, a fine mint est	£12
671	★ 1911 Coronation 1c. to 15c. with both 8c. and 1919 Caribou set with duplicate 2c. and 4c. all mint. (28)	£13
672	★ — 1c. to 15c. with 8c. greenish blue only; 1923-24 1c. to 20c., 1928 3c., 5c., 8c. and 20c. and 1929-31 1c. to 20c. all mint. (37)	£10
673	★ — ditto, with both 8c.; 1919 Caribou 1c. to 36c. with some shades; 1920 provisionals (5) and 1923-24 9c. and 11c. to 24c. all mint. (46)	£15
674	1919-41, a mint and used collection with some duplication including 1919 Caribou set except 24c.; 1923-24 24c. (2 mint); 1932 30c. ultramarine (2 mint); 1933 Gilbert two mint sets and 1937 Long Coronation two mint sets with a few later. (335)	£24
675	★ ^(A) 1919 "Alcock" airmail \$1 on 15c. very fine mint	£10
676	★ ^(A) — ditto, also 1931 15c., a pair, one without watermark and \$1 watermarked, all mint and 1943 7c. mint and used	£14
677	★ ^(A) — ditto, variety no comma after "POST" fine mint. Cat. £50. Photo 6	£20
678	★ ^(B) 1920 "THREE/CENTS" on 35c., a block (2×3), one stamp with "THREE" practically omitted, some reinforcing	£40
679	★ ^(B) — ditto, a similar block, one stamp with "THREE" practically missing and another with defective "ENTS"	£32
680	★ ^(B) — variety lower bar omitted in a block of four, another stamp has bar almost completely missing	£15
681	★ — ditto, a vertical pair, one stamp with lower bar omitted. Cat. £28	£12
682	★ 1920-31, a mint collection with 1920 provisionals (6, including 3c. on 15c. narrow setting); 1923-24 set, 1928-29 set; 1929-31 set and 1931 watermarked set; also 1931 Air both sets and extra block of 50c. unwatermarked and 15c. watermarked also pair of 50c. watermarked. (74)	£21

BIDDING BY POST

Buy bids (i.e. without specific limits) however expressed, are accepted subject only to the auctioneer's discretion to fix a limit.

Each plus sign (+) after a bid is taken as 10% of the bid.

Lot	Description	Valuation
Newfoundland—contd.		
683	④★ 1921 "Halifax" airmail 35c. wide setting no stop in a pair with the narrow setting with stop fine mint. Cat. £54	£21
684	④★ — wide setting no stop and narrow setting no stop, both fine mint. Cat. £60	£20
685	④★ — 1½ mm. setting with stop after 1921 variety overprint inverted mounted mint and somewhat stained, very scarce. Cat. £650. Photo 6	£180
686	④⑥田 1923 Vickers Vimy Airmail essay 15c. indigo and dark brown prepared by De La Rue & Co. perf. 14×13½ in an ungummed block, somewhat toned	£30
687	★ 1928 1c. to 30c.; 1929-31 re-engraved 1c. to 20c. and 1931 watermarked 1c. to 30c., also 1931 Air unwatermarked and watermarked sets and 15c. in a pair with and without watermark fine mint	£16
688	★田 1929-31 re-engraved unwatermarked 2c. scarlet, a mint block, the two lower stamps with very marked double impression. Photo 6	£120
689	★ 1932 1c. to 30c.; 1933 "L & S Post", 1933 Airmail set; 1933 H. Gilbert set and 1935 Jubilee. (45)	£12
690	★ 1932 Jan. 1c. to 30c.; 1932-38 1c. to 48c.; 1933 L & S Post; 1933 Air 5c. to 75c.; 1933 Gilbert 1c. to 10c.; 1937 Long Coronation set and a few later, all fine mint. (81)	£10
691	★ — ditto, with a few duplicates and 15c. line perf. 14 in a pair; 1932-38 1c. to 48c.; 1933 L. & S. Post (5); 1933 Air 5c. to 75c.; 1933 Gilbert set and some later to 1939 including some varieties of the 1937 Long Coronation set, all fine mint. (144)	£22
692	④★ 1932 DQ-X Airmail \$1.50 on \$1 blue fine mint	£28
693	④★ — ditto, mint but gum slightly disturbed	£25
694	④★ 1935 "Balbo" Airmail \$4.50 on 75c. fine mint, small mark on perfs. at back	£42
695	1937-46, a large mint much duplicated collection many in blocks of four and including Postage Dues, also nineteen envelopes of various issues mostly first flights, some from Canada to Newfoundland. (195)	£12
696	1938 2c. to 7c., the collection with numerous mint blocks of four or larger and a selection of used examples with three blocks of four 7c., also 3c. perf. 14 line used (Cat. £28), also two 1939 1st Flight covers. (293)	£15
697	1939-47, a fine mint and used collection including many blocks of four or larger and twenty-three covers some with Newfoundland and Canadian stamps in combination used on 1st Apr. 1949. (360)	£15
New South Wales		
698	○ 1850 Sydney Views 2d. dull blue plate I late impression and 3d. yellow-green on grey wove paper both with full margins and fine	£12
699	☒ — 3d. yellow-green on grey wove paper very fine used on rather soiled envelope. Photo 9	£20

EARLY VIEWING FACILITIES. If you cannot conveniently visit 50 Pall Mall on the viewing days quoted in this catalogue you may view lots at an earlier date by appointment, provided three days notice is given in writing indicating the time and the lot numbers which are required. The observance of these arrangements makes it possible for our inspection clerk to reserve the lots (which might otherwise be out on postal viewing) and to have them available on the mezzanine floor when you call.

BID POSTALLY WITH CONFIDENCE. In most sales about half the lots are captured by postal bidders. This is an important aspect of the reliability of our valuations which we consider are fair values that one might expect to pay in today's market. We try not to under-value or over-value, though occasionally a lot will realise a fantastic sum, but this is the exception to the rule. The average total realisation for a sale is around 5% over our valuations. You can base your bids on our valuations with confidence.

Third Session at 11.00 hrs.

New Zealand

Lot	Description	Valuation
700	△ 1855 blued paper 1/- green bisected vertically and tied to small piece by "18" in oval of bars, used at Dunedin to make up 6d. rate to England. Photo 6	£65
701	1862 Large Star imperforate 1d. orange-vermilion close at left, oxydised, 1d. vermilion fine with "DRURY" c.d.s., an ironed-out crease at lower corner is imperceptible from the front, and 1d. carmine-vermilion unused, three good margins, just touched at left	£15
702	○ 1862 Large Star rouletted 6d. black-brown, 6d. red-brown and 1/-, the three catalogued shades all with roulettes on one or more sides, fair to good	£50
703	○ — ditto and 6d. brown, both with slight faults and 1864 watermark "NZ" rouletted 2d. pale blue, all with clear roulettes and very fair. Cat. £105	£20
704	○ 1862 Large Star perf. 13 at Dunedin, 2d. (5), 3d., 6d. brown (4), 6d. red-brown (3), 1/- green and 1/- deep green, fair to good, some with faults. (15)	£20
705	○ 1862 pelure paper imperforate 2d. pale ultramarine, large margins and fine. Cat. £85. Photo 6	£25
706	○ 1864 watermark "NZ" imperforate 1d. carmine-vermilion pen-cancelled, 2d. pale blue fair, 6d. red-brown three very large margins, close at foot and 1/- lightly cancelled, cut close in places	£35
707	○ — 1d. carmine-vermilion large margins, lightly cancelled and very fine, slight rubbing in top right corner. Cat. £24. Photo 6	£14
708	○ — ditto, fine appearance with light town cancellation, thinned	£10
709	○ — 6d. red-brown very fair; perf. 13 1/- green fine and perf. 12½ 6d. red-brown, a good unused example. Cat. £121	£30
710	★ 1864 watermark "NZ" perf. 12½ 1/- yellow-green, a good unused example of this rarity of which only two are believed to exist; some faint staining, slight creasing is imperceptible from the front. R.P.S. N.Z. Certificate (1965) states it is genuine (faded) Row 14 No. 8. Photo 6	£350
711	★ 1864-67 Large Star perf. 12½, a selection with 1d. (4), 2d. plate 1 (2), plate 2, 3d., 4d. rose, 4d. yellow (2), 6d. (3, with unused pair) and 1/- (5, with fine mint marginal pair), all mint or unused, mostly attractive, some with faults. (19)	£25
712	○ — a selection with 1d. (3), 2d. (4), 3d., 4d. rose, 4d. yellow (4), 6d. (2) and 1/- (2) with shades, good to fine used, some with small faults. (17)	£16
713	○ — 3d., a selection with brown-lilac (2, faked perforations), lilac and deep mauve shades including three "accidental imperforates" not guaranteed, mainly good to fine, some faults. (13)	£12
714	Ⓢ 1871-72 2d. vermilion and 4d. no watermark, 6d. blue Star watermark overprinted "SPECIMEN" 1d. brown and 6d. blue with segment of the "NZ" cancellation used on Presentation Sets, and 1d. orange, 2d. blue and 6d. brown imperforate reprints on Star watermark paper; all fine	£25
715	Ⓟ — 1d. brown, 2d. vermilion, 3d., 4d., 6d. blue and 1/- Star watermark except 2d. and 4d., no watermark, perforated 12½ with Presentation Set two line cancellation diagonally across lower right corner; some stains have been removed, a few odd spots remain and 2d. slightly creased	£12
716	○ 1871-72, a collection with Star watermark, perforated 10, 1d. brown (2); perforated 10×12½, 1d. (10, one perforated 10 at the top, 12½ on the other three sides), 2d. (7, including strip); perforated 12½ 1d. (5), 2d. (21, including shades and retouches) and 6d. (7); no watermark perforated 12½, 1d. (2), 2d. (5); NZ watermark perforated 12½ 2d. (2, one with major retouching), lozenges watermark 2d. with defects, a good lot, condition varies from fine to defective. (62)	£30
717	★ 1871, a selection with 1d. brown shades, perforated 10×12½ (3), perforated 12½ (8) and imperforate; 2d. orange shades perforated 10×12½ (2), perforated 12½ (8, including pair); and 6d. blue (6, including strip) fair to fine mint or unused, some with faults and a few age-stained. (28)	£25
718	★ 1872 4d. orange-yellow unwatermarked perforated 12½, a single and a marginal pair fine mint	£15
719	○ 1872 watermark "NZ" perforated 12½ 1d. brown, a fair copy of this rarity repaired and reperfected on two sides. R.P.S.N.Z. Certificate (1965). Cat. £225. Photo 6	£50

Sudden trouble — an immediate cash advance of half the nett value of your collection can help.

Lot	Description	Valuation
720 ○	Cancellations; a collection on Chalon Heads including "LATE FEE", "SWITZERS", "S" in circle manuscript, "Z" in bars, "5/OTAHUHU/A", "4/ONEHUNGA/A" (3), and with imperforate 1d., 2d. (8), 6d. (4), 1/- and perforated 1d. (24), 2d. (48), 3d. (12), 4d. rose, 4d. yellow (6), 6d. brown (19), 6d. blue (4) and 1/- (5), some fine, many with faults. (133)	£55
721 ○	— Crown in circle "PAID AT CHRISTCHURCH CANTERBURY"; good for this rare mark which is only known cancelling adhesives, on 1858-59 2d., some faults. Photo 6	£25
722 ○	— manuscript cancellations, a selection on 1d. vermilion (2), 1d. brown, 2d. blue, 2d. orange, 3d. and 6d. blue, fair to good, all clear pen markings	£25
723 ○	— "A.L.F." dumb cancellation on 2d. orange star watermark perforated 12½; fine, one straight edge. Photo 6	£15
724 ○	— large fancy "s" of Southland on 1d. carmine-vermilion Large Star watermark perforated 12½, a rare cancellation, fine. Photo 6	£12
725 ○	— "Temuka Star" on 2d. orange and 6d. blue watermark Large Star, perforated 12½, fine. Photo 6	£20
726 ○	— "HEADQUARTERS" on 1862 1d. (2, one thinned) and 3d., "QUEENS REDOUBT" on 2d. watermarked NZ perforated 12½, and "COROMANDEL" on 2d. orange watermarked Star perforated 12½, fair to good impressions of these sought-after Maori War cancellations, the stamps not fine	£12
727 ★	Reprints: 1884 6d. brown imperforate with Large Star watermark, a fine strip of four	£20
728 ②	Hausburg reprints, 1d., 2d. (two singles, a block and a block 3×3), 3d., 4d., 6d. and 1/-; one 2d. is creased, otherwise fine; also Perkins Bacon reprint from the original roller die for the 1940 Centenary Exhibition. (21)	£15
729 ④	— ditto, in black on thick card of the 1d., 2d., 3d., 4d., 6d. and 1/- in blocks, the 1d. and 2d. from the very worn plate. (24)	£10
730 ②	1907-09 reprints for the Herts Philatelic Society in three different types and various colours. (14)	£30
731	Forgeries: six crude forgeries attributed to the Spiro brothers, and Jeffrey's "book plate" on Star watermarked paper showing the "crest". (6)	£15
732	1873 unwatermarked perf. 12½ ½d. pale dull rose; 1874 white paper perf. 12½×10 4d. maroon, a little stained; 1878 perf. 12×11½ 6d. blue; 1902 1d. universal perf. compound of 11 and 14 (S.G. 348), all unused or mint, also another 1d. universal apparently imperf. large margins and light bars cancellation	£10
733 ⑤	1874 perforated colour trials all overprinted "SPECIMEN", 1d. chestnut, 2d. blue, 3d. mauve, 4d. rose, 6d. brown and 1/- green (issued colour), all fine	£15
734 ○	1931-39 Arms Type, a small used selection including 7/6 (corner blunt), 12/6, 15/-, £2 (2), £3 and £4 good to fine. Cat. £108	£25
735 ★	— Arms type £2 violet fine mint. Cat. £90. Photo 6	£40
736 ○	1939-40 3/6 to 35/- all superb and lightly cancelled. Cat. £44. (5)	£15
737 ②④	1939 Health 1d. on ½d.+½d. and 2d. on 1d.+1d. and 1941 Health 1d.+½d. and 2d.+1d. all in blocks of twenty-four, also 1942 Health 1d.+½d. (16) and 2d.+1d. (24). Cat. £33.65. (136)	£10
738 ★	1940-58 Arms type mult. watermark: 1/3 orange-yellow, 2/6 to £1, £2, £3, £4 and £5 all fine mint. Cat. £51.75. (16)	£20
739 ○	— a used selection values to £5 (crease) including 7/6, 15/- (2), 30/-, £2, £3 and £4, also 3/6 (3), 5/6 (2), 11/- and 22/- . Cat. £70. (26)	£20
740 ★	— £2-10s. very fine mint. Cat. £38. Photo 6	£16
741 ○	— £2-10s. very fine used. Cat. £32	£14
742 ★	— £3-10s. rose superb mint. Cat. £225. Photo 6	£135
743 ★	— 3/6 (1), 5/6, 11/- and 22/- fine mint. Cat. £45.25	£20
744 ②④	— 11/- on 11/-, a mint unmounted corner block showing control number	£20
745 ★	Official Stamps: 1892-1906 overprinted "O.P.S.O." in rose on ½d. black (perf. 10), a block (3×2) and a strip of three mint, slight foxing	£20
746	— ditto, ½d. mint, 1d. violet overprint used and red overprint mint, 5d. red overprint a pair mint and violet overprint used and 1d. Universal (2) with two shades of violet overprint mint	£22
747 ②④	— ditto, 1d. rose perf. 12×11½ overprinted in violet, a superb block (4×3), rare	£35

Lot	Description	Valuation
New Zealand Official Stamps—contd.		
748	— 1907 Reefton Provisionals 2d. purple and 1/- orange-red both fine (S.G. P3 and P6), scarce. Cat. £53	£25
749	Ⓐ★ Great Barrier Island Pigeon Post: 1/- dark blue on white, 1/- pale blue "SPECIAL POST" and 1/- pale blue "PIGEON GRAM", also the triangular 6d. blue and 1/- scarlet all unused and in good condition	£10
750	☒ King Edward VII Land 1908 1d. rose-carmine used on the official Exhibition envelope which is a little ragged and stained, scarce	£12
751	★Ⓜ Victoria Land: 1911 1d. carmine, a superb mint block (12×10) from right of sheet with full sheet margins on three sides and showing one stamp without stop after "LAND"	£300
752	★ Niue: 1931 Arms Type 2/6 to £1 the fine mint set. Cat. £40.50. (4)	£15
753	★ — 1941-67 Arms type single watermark overprinted "NIUE" in thin type 2/6 to £1 and mult. watermark 2/6 to £1 all fine mint. Cat. £59.40. (8)	£24
Niger Coast		
754	☒ 1891 envelope with "THE NIGER TERRITORIES AKASSA" oval date-stamp and bearing G.B. 6d. cancelled "466" at Liverpool, name and address deleted but legible. Photo 9	£25
755	1893 ½d. on half of 1d. lilac fine used also a mint unsevered pair with B.P.A. Certificate (1964)	£20
756	☒ 1893 (Nov.) ½d. to 1/- all fine used together on registered envelope from Old Calabar River to England showing Liverpool and London date-stamps	£15
757	Ⓟ 1894 (May) imperforate colour trials, probably from the dies, of the ½d. in dull blue, 5d. in lake and 1/- in deep green, the 5d. is torn at foot, scarce	£25
758	☒ 1894 (May) ½d. to 1/- all fine used together on envelope from Sombreiro River to Birmingham with "PAQUEBOT" handstamp and Liverpool British Packet date-stamp	£20
759	☒ — ditto, another set used together on foolscap size registered envelope to Sierra Leone from Old Calabar, the ½d. and 1d. have a squared circle cancellation and the rest have c.d.s.'s all in violet	£25
760	△ 1894 (May-June) "½" on half of 1d. pale blue and 1894 (Aug.-Sept.) "½" in blue on half of 1d. vermilion both fine used on small piece the latter with B.P.A. Certificate (1963). Cat. £31	£14
761	1894 (June-Oct.) "1" on 2d. green and carmine mint also a fine example used on small piece. Cat. £48	£18
North Borneo		
762	★Ⓜ 1939 1c. to \$5 the set in fine mint blocks. (60)	£16
763	★Ⓜ Japanese Occupation: 1944 (Sept.) \$1 brown and carmine a fine mint corner block (4×2)	£24
Northern Nigeria		
764	★ 1900 CA 10/- green and brown fine mounted mint. Photo 6	£16
Northern Rhodesia		
765	★ 1925 1/-, 2/-, 2/6 and 5/-; 1938 2/6 to 20/-; 1948 Wedding 20/- (a single and an imprint pair also Southern Rhodesia 1924 8d. to 5/- and 1931-37 various to 5/- with an imprint block (4×2) of the 6d. perf. 14, all fine mint. (39)	£21
766	ⓂⓂ 1938 2/6 a block of six and 3/-, 5/-, 10/- and 20/- all in superb mint blocks of four. (22)	£22
767	ⓂⓂ 1953 ½d. to 20/- the set in superb unmounted mint blocks of six. (84)	£24
768	ⓂⓂ 1963 ½d. to 20/- the set in superb unmounted blocks of six. (84)	£18
769	ⓂⓂ — 10/- mauve a mint unmounted block (5×6) from right half of sheet. (30)	£18
Nova Scotia		
770	○ 1851 imperf. 1d. red-brown fine with small even margins and very lightly cancelled. Cat. £65. Photo 6	£25
771	○ — ditto, fine with small to good margins, slight crease	£15
772	○ — 3d. dark blue and 3d. bright blue both fine the latter only just touched by cancellation	£22

Lot	Description	Valuation
Nova Scotia 1851—contd.		
773 ○	— 3d. dark blue and 3d. light blue lightly cancelled and fine except for small thin spot on the first	£20
774 ★	— 3d. bright blue good margins and unused with much original gum but has thin spot. Cat. £65. Photo 6	£25
775 ○	— 6d. yellow-green fine with full margins. Cat. £70. Photo 6	£25
776 ○	— ditto, three good margins, just cut into above "NOVA". Photo 7	£18
777 ○	— 6d. deep green large even margins lightly cancelled and attractive appearance, thinned at one side. Cat. £170. Photo 7	£40
778	1860-63 1c. (6), 2c. (8), 5c. (3), 8½c. (4), 10c. (3) and 12½c. (2) eight are used, one 5c. is unused with some original gum but badly soiled. (26)	£10
Nyasaland		
779 ★	1891-95 on Rhodesia ½d. to 4/- with both shades of 6d.; 1892-93 4/- on 5/-; 1895 unwatermarked 1d. to £1 overprinted "SPECIMEN"; 1897 1d. to £1 except 1/- overprinted "SPECIMEN" and 1d. to 4/- as issued; 1901 1d. to 6d. and four items of Postal Stationery. (44)	£20
780 ⊕	1895 "ONE PENNY" on 2d. double surcharge without stop after "PENNY" from the trial printing made at Blantyre but not issued to the public (See S.G. note). Photo 7	£20
781 ⊕	1895 unwatermarked 2/6; 1896 CC £1; 1897 CC 2/6 and £10 and 1903-04 K.E. VII 1/-, 10/- and £10 all mint and overprinted "SPECIMEN"	£20
782 ⊕	1895 unwatermarked £1 black and yellow-orange and £25 black and blue-green both overprinted "SPECIMEN", the latter somewhat foxed	£20
783 ⊕	1896 CA 1d. to 1/- and CC 2/6 to £25 all fine and overprinted "SPECIMEN". Cat. £110. (11)	£30
784 ⊕	1898 1d. vermilion and grey-blue setting I imperforate fine used on envelope (S.G. 54). R.P.S. Certificate (1971). Photo 9	£20
785 ○	— ditto, used with initials J.T.G. on back, slight crease. R.P.S. Certificate (1971)	£15
786 ★	1908 K.E. VII ½d. to £1 mint the £1 a little rubbed on face as usual. (10)	£30
787 ○	1908-53 a small used collection including 1913-18 MCA 4/- and £1; 1921-30 Script 2/- to 4/-; 1938-42 to £1; 1945 to 20/-; 1948 Wedding 10/- and 1953-54 to 20/- all fine. (115)	£18
788 ★	1913-18 MCA ½d. to £1 with shades of lower values; 1921-30 Script ½d. to 10/-; 1934-35 ½d. to 1/- (2) and 1938-42 ½d. to £1 all very fine mint. (70)	£21
Palestine		
789 ★	1918 (10th Feb.) rouletted 20 un gummed 1p. deep blue fine unused. Photo 7	£15
790	1920 (1st Sept.) perf. 15×14 10p. a used pair and perf. 14 3m. chestnut a mint pair also 1920 (22nd Sept.) perf. 14 5m. orange mint, all fine	£12
791 ○	1920 (22nd Sept.) perf. 14 5p. purple very fine, scarce. Cat. £100. Photo 7	£20
792	1921 overprinted at Somerset House 5p. used and 9p. and 10p. mint and 1922 Waterlow print perf. 15×14 9p., 10p. and 20p. mint also 1927 pictorial 90m. bistre mint. Cat. £30	£14
Pitcairn Islands		
793 ⊕	1940 ½d. to 2/6; 1946 Victory and 1948 Wedding 1½d. and 10/- all in very fine mint blocks. Cat. £55.20. (48)	£26
Prince Edward Island		
794	1861 perf. 9 2d. rose unused, 3d. pale blue unused and 3d. blue used and 6d. yellow-green unused, as usual with some faults but good average examples	£25
795	1862-72 a mainly unused collection with 1862-68 1d. (2), 2d. (3), 3d. (5), 4d. (5), 6d. (3) and 9d. (3); 1870 4½d. (3) and 1872 values to 12c., fair to fine. (43)	£12
795 ★	1870 4½d. yellow-brown a complete unused (no gum) left hand pane (6×10) straight edge at right and showing the wide central horizontal gutter, well centred and fine	£80

If you have fine classics to sell you should consult the Burrus Auctioneers Robson Lowe Limited, 50 Pall Mall, London, S.W.1.

Lot	Description	Valuation
Queensland		
797	⑤ 1862-89 a selection of stamps overprinted "SPECIMEN" all first type except seven and including 1862-67 unwatermarked rough perf. 13 1/- grey a block of four and 1866 4d. lilac a fine block (6×3) a few perfs. severed also single values to 10/- and 1880 ½d. on 1d. a pair; 1882-86 £1 and 1887-89 2/- deep brown in a block of four. (41)	£10
Rhodesia		
798	○ 1910-16 £1 rose-scarlet and bluish black very fine	£20
799	1954-66 a fine mint collection with Rhodesia and Nyasaland 1954-63 complete and Independence issues 1965-66 including Independence 2/6 on first day cover. (98)	£12
800	⊕⊕ 1966 Independence overprint ½d. to £1 and 5/- on 1/3 all in fine mint blocks and a few others. (88)	£24
801	⊕⊕ — 10/- and £1 three mint blocks of four of each value	£15
802	⊕⊕ 1966 (Feb.) ½d. to £1 the set in fine mint blocks with additional block of 9d. (60)	£10
803	⊕⊕ 1966 (Feb.) pictorial set 1d. to 5/- sixty mint sets in blocks. Face value £46	£40
St. Helena		
804	○ 1863 rough perf. 14 to 16 6d. blue fine and with a rare large "2" cancellation in black. Photo 7	£30
805	1890-1913 a mint collection including 1890-97 ½d. to 10d. and 1903 CC set to 2/- also a used set on three registered envelopes, addressee's name cut out. (31)	£10
806	○ 1902-59 a small collection including 1903 CC 1/- and 2/-; 1922-27 Script values to 5/-; 1934 Centenary set complete and very fine and later issues to 1959 almost complete. (87)	£50
807	⑤ 1903 CC ½d. to 1/- except 1d.; 1922-27 MCA 5/- and £1 and Script 7/6, 10/- and 15/- all overprinted "SPECIMEN" also 1934 Centenary 10/- perforated "SPECIMEN"	£18
808	⑤ — the scarce unissued 1d. carmine mint and overprinted "SPECIMEN"	£12
809	★ 1908 CA 10/- green and red on green fine mint. Photo 7	£16
810	⊕ 1922-27 MCA 4d. to £1 a fine mint set. Cat. £45	£24
811	⊕ 1961 Tristan Relief Fund a fine marginal mint unmounted set. Photo 7	£575
812	⊗ — ditto, used on envelope registered to Scotland and dated 18th Oct. 1961. The envelope slightly torn, not affecting the stamps. Photo 1	£325
St. Christopher		
813	1870-76 CC perf. 12½ 1d. dull rose watermark sideways and 1d. magenta mint (thinned) and used; perf. 14 1d. mint and used and 6d. used; 1882-90 CA values to 6d. and 1885-88 provisionals (8) also Postal Fiscals (6). (36)	£24
St. Kitts-Nevis		
814	★ 1903 CA ½d. to 5/- with duplicate 3d., 1/-, 2/- and 5/- and a set overprinted "SPECIMEN" stained; 1905-18 MCA ½d. to 5/- with 2½d. bright blue, 6d. grey-black and bright purple and 1/- in blocks of four also War Stamps (17) all mint. (73)	£16
815	★ 1920 MCA ½d. to 10/- with extra blocks of four ½d., 1½d., 2/- and 2/6; 1921-29 Script ½d. to 1/- (5), 2/-, 2/6 and 5/- (2) also 1935 Jubilee set all mint. (45)	£12
816	★ — £1 purple and black on red mint. Photo 7	£25
817	★ 1923 Tercentenary set ½d. to £1 fine mint. Photo 7. (13)	£170
818	★ — ditto, a few lower values slightly toned, Photo 7	£160
819	⊗ — various lower values to 2½d. used on three envelopes and 1948-63 various on first day or other envelopes with values to \$4.80 (2). (56)	£10
820	★ 1937-68 a fine complete mint collection also Anguilla 1968-69 (38). (121)	£20
St. Lucia		
821	1860 1d.; 1863 CC perf. 12½ 1d. and 6d.; 1864 CC perf. 12½ 1d., 6d. and 1/- (2) and perf. 14 1d., 4d. and 6d.; 1881 CC ½d. and 2½d. (2); 1882-84 CA ½d. to 6d. and perf. 12 4d. all mint or unused except (6). (18)	£32

Lot	Description	Valuation
St. Lucia—contd.		
822 ★	1860 Small Star perf. 14 to 16 4d. blue very fine fresh mint. Photo 7	£14
823 ★	1863 CC perf. 12½ 1d. lake variety imperforate very fine mint. Cat. £110. Photo 7	£40
824 ★	1882-98 values to 10/- fair to fine; 1891-92 "ONE/HALF/PENNY" on 3d. dies I and II; "½d" on half 6d. and "ONE PENNY" on 4d. fair to fine mint or unused. (22)	£18
825 ★	— 6d. lilac very fine fresh mint, two very small marks at foot. Photo 7	£15
826	1902-36 a fine mint collection apparently complete and 1907-10 universal colours ½d. to 5/- fine used on envelope to France also a few postage dues including some on envelopes from Antigua and Turks Is. (121)	£30
827	1937-68 a fine mint and used collection the mint complete with perf. varieties (except S.G. 193a) and a few in blocks of four also some on first day or other covers. (317)	£25
828 ⊕	1938-48 3/- (11), 10/- (10) and £1 (11) all fine unmounted mint including blocks of four also 1948 Wedding 1d. and £1. (34)	£22
St. Vincent		
829	1861 intermediate perf. 6d. deep yellow-green, part reperfed; 1862 rough perfs. 1d. (2 unused) and 6d. used and 1863 perf. 11 to 12½ 1d. (3, one used and one partly reperfed) condition fair to good	£12
830 ○	1861 rough perf. 14 to 16 1d. rose-red two fine pairs; 1862 rough perf. 14 to 16 6d. deep green a pair and single; 1871 Small Star 6d. blue-green and 1872-75 perf. about 15 6d. dull green, the last two cancelled in red	£20
831	1862 unwatermarked rough perf. 14 to 16 mint; 1863-68 perf. 11 to 12½ 1d. unused; 1871 Star rough perf. 14 to 16 1d. and 6d.; 1880 perf. 11 to 12½ 1d. olive-green (2, one with a fine strike of the "MES" c.d.s.); 1881 ½d. orange (2) and 1d. used (2); 1883-84 CA perf. 14 1/- orange-vermilion mint and a selection of later first types to 1897 and 1899 CA ½d. to 5/- mint also 5/- "SPECIMEN" also an envelope to U.S.A. bearing 2½d. on 1d. milky blue a strip of three (not fine) and ½d. green and another bearing 2½d. on 1d. blue. (68)	£25
832 ○	1863-68 unwatermarked perf. 11 to 12½ 4d. deep blue fine and perf. 14 to 16 1/- slate-grey fine and cancelled in brown	£16
833 ○	1869 4d. yellow, 1/- indigo and 1/- brown good condition, some small faults. Cat. £73	£22
834	1871 Small Star rough perf. 14 to 16 1d. black (4 used) and 6d.; 1872-75 perf. about 15 1d. (2 unused) and 1876-78 perf. about 15 6d. pale yellow-green used with the "GB/40c" cancellation	£12
835 ○	1872 perf. 11 to 12½ 1/- deep rose-red and fine with hardly visible red cancellation, and cancelled again on arrival in London with the suburban "N.W./12" in oval. Photo 7	£12
836 ★	— ditto, and 1872-75 perf. 11 to 12½ × 15 1/- lilac-rose both very fair, as usual rather heavily cancelled. Cat. £110	£20
837 ○	1875 perf. 11 to 12½ 1/- claret (2) both cancelled in red one has small tear at side, good average condition. Cat. £90	£22
838 ○	1876-78 perf. 11 to 12½ × 15 1/- vermilion (2) and perf. 11 to 12½ 4d. deep blue (2) fair condition, one 4d. heavily repaired. Cat. £96	£25
839 ○	1880 perf. 11 to 12½ 1d. olive-green (2), 6d. bright green and 1/- bright vermilion (3) fair condition only, two of the 1/- are partly reperfed. Cat. £64.50	£15
840 ★	— 6d. bright green very fine fresh unused without gum. Cat. £60. Photo 7	£25
841 ★	1881 "ONE PENNY" on 6d. bright green unused fine appearance, some gum disturbance. R.P.S. Certificate (1970). Cat. £55. Photo 7	£20
842 ○	— 4d. on 1/- bright vermilion a good used example. R.P.S. Certificate (1970). Cat. £150. Photo 7	£45
843 ○	1881 ½d. orange (2, one used), 1d. drab (2 used) and 4d. bright blue also 1883-84 CA perf. 12 ½d., 4d. bright blue (2) good to fine and 4d. dull blue defective	£15
844 ○	1883-84 CA perf. 12 1/- orange-vermilion a very fine used strip of four	£16
845	1882-99 a mint and used collection with some duplication, includes 1885-93 5/- (3 mint) and 1899 ½d. to 5/- mint the latter overprinted "SPECIMEN". (67)	£12
846 ★	1885-93 CA perf. 14 6d. violet mint (2, one a little toned). Cat. £44	£15
847 ★	1890 "2½d" on 4d. chocolate variety no fraction bar mint with normal for comparison. Cat. £38	£15

Lot	Description	Valuation
St. Vincent—contd.		
848	1902-51 a small mainly mint collection including 1902 values to 1/- with a block of four 6d. and 1/- in a pair; 1904-11 values to 5/-; 1907 ½d. to 3d. used; 1909 and 1909-11 sets mint with some duplication; 1913-17 MCA values to 5/- and War Stamps (11). (98)	£16
849	★ 1902 CA ½d. to 5/-; 1904-11 MCA ½d. to 5/- also £1 overprinted "SPECIMEN"; 1907 MCA ½d. to 3d.; 1909 1d. to 1/- and 1909-11 ½d. to 6d. all fine mint. (49)	£20
850	★ 1904-11 MCA £1 purple and black on red fine mint, very slightly rubbed on face. Photo 7	£48
851	△ — ditto, fine used on small piece. Photo 7	£75
852	1913-35 a mainly mint collection with some duplication includes 1913-17 MCA to £1 mint; 1921-32 Script to 5/-; 1935 Jubilee set mint and used and War stamps (7). (80)	£20
853	△ 1915 "ONE PENNY" on 1/- black on green variety "ONE" omitted used on small piece with 2d. slate, scarce used. Ex Bute. Photo 9	£75
854	★ 1921-32 Script £1 mauve and black mint	£15
855	1937-68 a large mint and used collection the mint apparently complete and the used with values to £1 or \$4.80 also a few first day covers. (272)	£26
856	⊕ ⊞ 1938-47 2/- to £1 two sets in mint unmounted blocks of four mostly marginal. (40)	£20
857	⊕ — 2/- (4), 2/6 (4), 5/- (4), 10/- (7) and £1 (6) including a block of four of the £1 all fine unmounted mint. (25)	£13
Samoa		
858	1932 Arms type of New Zealand overprinted "SAMOA" 2/6 to £1 mint; 1935 overprinted "WESTERN SAMOA" single watermark 10/- used and 1945-48 mult. watermark 2/6, 5/- (2) and 10/- all used. Cat. £45.60. (9)	£18
859	★ 1945-48 Arms type overprinted "WESTERN SAMOA" mult. watermark 2/6 to £2 fine mint. Cat. £66.25. (6)	£25
860	★ — £5 deep blue very fine mint. Cat. £80. Photo 7	£50
Sarawak		
861	1895 Pence surcharges on the 2c. plate used in connection with the printing of stamps for British South Africa, being overprinted with a figure in each corner to test paper shrinkage; a collection showing the various colours of printing and surcharges both perforated and imperforated including pairs and blocks. (69)	£75
862	★ Revenue Stamps: 1875 3c. black inscribed "RECEIPT STAMP" blocks (7×5) and (7×3) the latter with lower sheet margin and imprint also used (3) and 1883 printed in red (12, one used), the blocks are creased in places. (70)	£25
863	Ⓟ — 1918 definitive issue of Revenue stamps imperforate plate proofs in marginal pairs of 3c. (2), 10c., 25c., 50c., \$1, \$2, \$3, \$5 and \$10. (20)	£20
Seychelles		
864	○ Mauritius stamps used in Seychelles, cancelled "B64" on 1860-63 unwatermarked 9d. dull purple and 1863-72 CC 1d. (2), 2d., 3d., 4d. (2), 6d. blue-green (2) and 1/- yellow (2) all good clear strikes. (11)	£20
Sierra Leone		
865	1859 unwatermarked 6d. dull purple on bluish (5, two used) and 6d. dull violet (4 used, one cancelled in red) and perf. 12½ 6d. dull violet on bluish all fine to very fine	£20
866	1872-73 CC perf. 12½ sideways 1d. (5, two used), 3d. (4, three used), 4d. (2 used) and 1/- (2 used); watermark upright 1d. unused, 2d. (2, one used), 3d. (2), 4d. (2) and 1/- (3) all used fair to fine. (23)	£26
867	1876-77 CC perf. 14 ½d. to 1/- a mint and used selection with ½d. (4), 1d. (4), 1½d. (5), 2d. (5), 3d. (4), 4d. (2) and 1/- (6), thirteen are mint or unused. (31)	£10
868	★ — 3d. in a scarce uncatalogued yellow shade instead of buff, fine mint. Photo 7	£20
869	1883-97 a fine mint and used selection, values to 1/- (5) and including 1893 "HALF PENNY" on 1½d. C.A. error "PFNNY" and another with surcharge inverted and 1867 "2½d" on 6d. type (e) mint and "2½d" on 1/- type (a) unused (defect) and used. (84)	£30

Lot	Description	Valuation
Sierra Leone—contd.		
870 ★	1896-97 CA ½d. to £1 a mint set, a few lower values slightly soiled	£18
871 ⑤	— £1; 1903 CA 5/- and £1; 1912-16 MCA £2 and 1921-28 Script £5 all overprinted "SPECIMEN"	£20
872 ★	1897 "2½d." on 3d. type (c) a pair and single "2½d" on 6d. type (d) and "2½d." on 1/- type (a) all fine mint. Cat. £37	£14
873 ★	— "2½d." on 6d. a mint strip from foot of sheet comprising types (a), (c), (c), (d), (e), (c), (c) and (d). (8)	£15
874 ★	— "2½d." on 1/- type (a) a strip of three and a single all mint	£21
875 ★	— ditto, a strip of three and a pair the latter showing plate number	£25
876	— ditto, type (d) mint and used examples the first with lower sheet margin. Cat. £73	£25
877 ○	— ditto, type (f) used, a little discoloured. Cat. £110	£25
878 ★	1903 CA ½d. to 5/-; 1904-05 MCA ½d. to 5/- and 1907-10 MCA ½d. to 5/- except 5d. and 6d. all mint. (34)	£18
879 ★	1903 CA £1 purple on red very fine mint. Photo 7	£20
880 ★	1904-05 MCA 1/- to 5/-; 1907-10 MCA 1/- to 5/-; 1912-16 MCA 2/- and 10/-; 1921-28 2/-; 1932 2/- and 10/-; 1933 6d. and 1/-; 1938 5/- to £1 and 1948 Wedding £1 all fine fresh mint. (17)	£14
881 ○	1907-10 MCA £1 purple and black on red very fine. Photo 7	£25
882 ★	1921-28 Script £2 blue and dull purple very fine mint. Photo 8	£70
883 ★	— £5 orange and green very fine mint. Photo 8	£150
884 ⑤	1933 Wilberforce set ½d. to £1 mint and perforated "SPECIMEN". (13)	£25
885 ★	— ½d. to 10/- except 5d. very fine mint, the 10/- marginal. (11)	£30
886 ★田	1963 (Nov.) Postal commemoration 3d. to £1 the complete set in mint blocks of four and in singles. Cat. £35	£10
South Australia		
887 ⑤	1886-96 £2, 50/-, £4, £10, £15 and £20 fair to good and overprinted "SPECIMEN"	£20
Southern Nigeria		
888 ⑤	1903-04 £1 green and violet a mint strip of four overprinted "SPECIMEN", one stamp with slight ink marks on face	£20
889 ★	1905 MCA £1 green and violet fine mint. Cat. £35. Photo 7	£15
Southern Rhodesia		
890	1924-29 ½d. to 2/6 a mint and used selection including 2/- (4, two used) and 2/6 (2 singles and a block [3×2] all used) fair to fine. (62)	£12
891 田田	1953 ½d. and 1d. blocks of eight, 2d. to 5/- in blocks of four and 10/- and £1 in blocks of six all fine unmounted mint with imprint. (68)	£24
Sudan		
892 ○	1897-1960 a used collection fairly complete except for airmail issues; 1935 Gordon set to 10p. only also 1941 Palms set complete, also official stamps and Army Service. (213)	£16
893	1897-1941 a mint and used collection including 1897 on Egypt set to 10p. mint some duplication with a block of sixty of the 1m.; 1898 set to 10p. mint and used; 1902-21 values to 10p. mint; 1931 Air values to 5p.; 1935 Gordon set fine mint and Air Provisionals to 10p. on 4½p. all mint. (202)	£28
894 ★	1897 on Egypt 1m. pale brown variety overprint inverted fine mint. Cat. £30	£12
895 ★	— 5m. rose-carmine variety overprint inverted, somewhat creased and soiled. Cat. £40	£15
896 田	1921-22 watermark "SG" 10m. carmine and black variety with central vignette tvery much out of alignment 2½ mm. too low, scarce	£10
897 ①○	1931-50 a collection of airmail issues all very fine and including 1935 surcharges to 10p. on 4½p. also 2½p. on 5m. in a pair one with variety second Arabic letter missing (S.G. 70a). (39)	£15
898 ①★	1935 Air 15m. on 10m. variety surcharge double fine marginal mint. Photo 8	£75
899 ①	— 2½p. on 3m. variety Arabic letter missing fine used and variety small "½" in a used pair with normal; 2½p. on 5m. varieties Arabic letter missing and small "½" each in a used pair with normal and with small "½" on a mint single. Cat. £49.40. (8)	£18

Lot	Description	Valuation
Sudan—contd.		
900 ★	1940 5m. on 10m. carmine and black a complete mint sheet showing both the catalogued varieties and other minor flaws. (120)	£8
901 ★	Official Stamps: 1902 1m. brown and pink variety overprint "o.s.g.s." inverted mounted mint, a little soiled. Cat. £32. Photo 8	£15
902 ○	— ditto, as last, fine used showing the same variety	£12
903 ○	— ditto, as last, variety oval "O" with B.P.A. Certificate (1953) and variety round stops also Army Service 1905 (Jan.) 1m. (3) and "Army" reading down also 1906-11 wide setting 1m. (S.G. A5) all fine	£15
904 ○	— ditto, "ARMY" reading down variety "!" for "1". B.P.A. Certificate (1953). Cat. £65. Photo 8	£30
905 ○	Army Service: 1906-11 1m. type B variety overprint double one diagonal, with an Egyptian cancellation. Cat. £75. Photo 8	£30
906 ○	— ditto, as last, variety overprint inverted very fine. Cat. £32. Photo 8	£15
907 ★	— ditto, 5m. scarlet and black variety overprint double fine mint. Cat. Photo 8	£30 £20
908 ★	— ditto, as last, variety overprint double one inverted fine mint. Photo 8	£20
Swaziland		
909 ⊕	1938 2/6 blocks of six and four, 5/- two blocks of six and 10/- two blocks of six all perf. 13½×13 and superb unmounted mint. (34)	£25

Tasmania

910 ○	1854 4d. plate II two shades, full margins cancelled "25" and "68" both fine except for very slight thinning	£12
911 ○	1855 Large Star imperf. 1d. carmine lightly cancelled, close at right, 2d. green very large margins showing parts of three adjoining stamps and 4d. blue fine	£36
912 ○	— ditto, 2d. green (2) and 4d. blue (2) fair to fine, the 1d. close at right	£30
913 ○	— 2d. green (2); 1857-60 1d. (4), 2d. (3), and 4d. (2); 1858 1/- (3) and 1860-67 6d. shades (4) also 1864-79 rouletted 4d. and 1868-69 serrated perf. 1d. (2) also three proofs on card and four reprints, condition fair. (28)	£17
914 ○	— 4d. blue (3); 1857-60 1d. (2), 2d. (2) and 4d. (3) and 1858 6d. dull lilac, fair to fine mostly with clear numeral cancellations. (11)	£14
915 ★	— 4d. blue fine fresh unused, slight stain on left margin. Cat. £110. Photo 8	£30
916 ○	1857-60 watermark numerals imperf. 1d. shades (4), 2d. shades (8, with two pairs) and 4d. (3, one with inverted watermark) all good to fine	£12
917 ○	— 1d. shades (4), 2d. shades (8, with two pairs) and 4d. shades (4, one with double impression) all good to fine	£17
918 ○	— 1d. (3), 2d. (7) and 4d. (9); 1858-67 imperforate 6d. (7) and 1/- fair to fine and mostly with clear numeral cancellations. (27)	£25
919 ○	1858 imperf. 6d. dull lilac (2) and 1/- vermilion (6, one unused with part gum) and 1860-67 imperf. 6d. shades (10, one in reddish mauve) all good to very fine	£21
920	1864-80 a collection of the early perforated issues including perf. 10 1d. to 6d.; perf. 11½-12 4d. to 1/-; perf. 12½-13 1d. to 4d.; perf. 11, 11½ 6d. shades (19) and 1/- (4) and perf. 12 6d. dull claret (2 mint blocks of four) all good to fine used except as stated. (58)	£18
921 ○	— 1d. to 1/- various, mostly showing clear numeral cancellations, some scarce, condition fair to fine. (34)	£28
922	1870-96 a collection of the typographed issues mint and used with a good representation of all the printings including a few pairs and blocks with a mint pair of the 9d. blue imperforate (S.G. 176). (246)	£15
923 ○	1889-91 "Halfpenny" on 1d. scarlet variety "al" in "Half" reading down, fine. Cat. £25	£10
924 ★	1892-99 ¼d. (6), 2½d. (2), 5d. (2), 6d. (2), 10d. (2), 1/-, 2/6 (6), 5/- (6) and 10/- all mint including blocks of four of the 2/6 and 5/- also ¼d. to 1/- overprinted "SPECIMEN". (33)	£12

Tobago

925	1879 CC perf. 14 1d. to 6d. used; 1880 "1d" on half of 6d. orange on small piece; 1880 (Dec.) CC ¼d. and 1d. mint and 1/- used; 1883 2½d. on 6d. (3) and 1886-92 provisionals (10) all mint except one. (21)	£20
-----	--	-----

Lot	Description	Valuation
Tobago—contd.		
926	1882-84 CA ½d. (3, one used), 1d. (4, two used), 2½d. (11, five used) and 4d. mint; 1885-94 ½d. (12, three used one on cover with 2½d. on 4d.); 1d. (8, three used), 4d. (13, two used), 6d. (11, two used) and 1/- (12, four used) and 1896 1/- orange-brown (2 mint) all fine. (78)	£18
927	1886-89 ½d. on 2½d. blue a selection with sixteen mint including a block of four and used two blocks of six, some with varieties; 1d. on 2½d. blue (8, four used); 1891-92 ½d. on 4d. grey (2 used) and 2½d. on 4d. grey (12, eight used including two pairs and a single on separate entires) also a small envelope to Dominica bearing S.G. 26, 30, 31 and 33, an attractive lot. (56)	£25
928	— ½d. on 6d. stone a selection comprising mint blocks of six (2) a block of four and thirteen singles mint and two used, some with figure farther from word also ½d. on 6d. orange-brown fair unused. (32)	£14
Togo		
929	1914 narrow setting 20 pf., 25 pf. and 30 pf. also ½d. on 3 pf. and 1d. on 5 pf.; 1915 (May) values to 20/- including numerous catalogued and uncatalogued varieties on values to 1/- also 1916 (Apr.) values to 5/- mint and 10/- used. (81)	£20
Tonga		
930	⊗ⓑ 1962 Centenary of Emancipation 1d. to 5/- the complete set in mint imprint blocks of 10. Cat. £42.50. (80)	£10
931	○ — 1/- blue and black variety overprint inverted very fine used and very scarce. Cat. £275. Photo 8	£125
932	Ⓐ○ Official Stamps: 1967 (July) 2p. on £1 (7); 1967 Arrival of U.S. Peace Corps 30s. on £1 and 70s. on £1 sixty of each in blocks or pairs and 1p. 50 on £1 (22) all c.t.o. Cat. £89.50	£15
Transvaal		
933	Ⓢ 1903 CA £5 orange-brown and violet fine mint and overprinted "SPECIMEN"	£10
Trinidad		
934	1856 imperf. 1/- indigo mint; 1869 CC perf. 12½ 5/- unused and used; 1876 CC perf. 14 6d. mint; 1883-84 CA ½d. to 1/- and Official stamps 1894 ½d., 1d., 2½d., 4d. and 6d. (2) overprinted "OS" all mint also 1883-84 1d. bisected used on wrapper to St. Vincent and two other entires. (22)	£20
935	○ 1876 CC perf. 14×12½ 6d. yellow-green, the rare perforation variety to which someone has added a handstamped "1d" and ink line through value, rather thinned at top. Photo 8	?
936	1896-1909 a mainly mint collection values to 5/- (7, one "SPECIMEN") also 1896-1900 10/- and £1 "SPECIMEN"; a few other Specimen stamps and some duplicates also Official stamps (4, one with overprint vertical) and Postage Dues (17). (104)	£24
937	★ 1896-1900 CA over Crown £1 green and carmine mint	£25
938	ⓔⓈ 1896-1900 prepared for use but not issued 3d. dull purple and mauve overprinted "SPECIMEN". See note after S.G. 124. Cat. £25	£10
939	ⓔ — ditto, a similar lot	£12
940	★ 1904-09 MCA £1 green and carmine mint	£20
Trinidad and Tobago		
941	1913-35 a good mainly mint collection with 1913-23 values to 5/- and £1 Specimen; War Stamps (27, with some varieties); 1921-22 Script to 5/- and £1 Specimen; 1922-28 set to £1; 1935 1c. to 72c. and 1935 Jubilee also a few covers and Postage Dues (24, all mint). (114)	£30
942	★ — £1 grey-green and carmine and 1921-22 Script £1 green and carmine both fine mint	£25
943	1937-49 a mainly mint collection with 1938-44 to 60c. and a few duplicates of values to 24c. in mint blocks; 1940 \$1.20 and \$4.80; 1948 Wedding \$4.80 mint and used also Postage Dues (11). (89)	£12
944	1953-55 set including \$1.20 (5 mint) and \$4.80 (4) mint also later issues to 1968 and a few covers mostly first day including the 1953 \$1.20 and \$4.80. (114)	£14

Lot	Description	Valuation
Tristan da Cunha		
945 ★	1952 on St. Helena ½d. to 10/- a fine mint set	£10
946 ★	— ditto, another fine mint set	£10
947 ○	— ditto, a fine used set the 2/6 and 10/- on small pieces; 1953 Coronation 3d.; 1954 ½d. to 10/- and 1960 ½d. to 10/- all very fine. (41)	£25
Turks Islands		
948	1867 unwatermarked perf. 11-12 1d. and 6d. unused and 1/- used; 1873-79 Small Star 1d. both shades unused; 1881 CC perf. 14 1d., 6d. and 1/- unused and 4d. used and later to 1895 complete except 1893 ½d. on 4d. grey also two entires one bearing CA ½d. and 1d. (2) the other a 2½d. ultramarine and a used provisional stamped postcard "1d" on 1½d. (30)	£25
949 ★	1881 "¼" on 1d. dull red setting 9 type 8 (S.G. 16) a block (10×3) showing the complete setting with the three varieties in vertical strips, three stamps at left have clipped perfs. at foot. Stated to be the only known complete sheet of this scarce setting. (30)	£200
Turks and Caicos Islands		
950	1900 ½d. to 3/-; 1905-08 MCA ½d. to 3d.; 1909 MCA ½d. to 3/-; 1910 ½d. (2); 1913-18 MCA ½d. to 3/- with some shades including 2/- on greenish white and War Tax (16) also three entires bearing various values to 4d. (65)	£20
951 ★	1900 ½d. to 3/- mint and another set overprinted "SPECIMEN" also 1905-08 MCA ½d. to 3d. and 3d. overprinted "SPECIMEN". (23)	£15
952 ★	1909-45 a fine mint collection almost complete except the scarcer "WAR TAX" varieties and numerous "SPECIMEN" stamps including 1921 Script set; 1928 and 1938 sets. (177)	£32
953 ★	1921-37 complete without shades but with an additional corner block (3×2) of the 1922-26 MCA 2/- all fine mint. (46)	£14
954 ①	1928 ½d., 1d., 1½d., 2d., 2½d., 3d. and 5/- imperforate plate proofs in deep blue on thin card. Photo 8	£50
955	1938-68 a fine mint collection with additional blocks of four of the 1938-45 values to 1/- showing shade varieties also several first day covers including the 1948 100th Anniversary set. (212)	£16
Uganda		
956 ☒	1896 (Nov.) 1a. to 1r. used together on envelope with B. E. Africa 2½a. deep blue. the Uganda stamps are cancelled by red pencil crosses	£30
Victoria		
957 ○	1850 Campbell and Fergusson printing 3d. blue, four very fine deep shades	£10
Virgin Islands		
958 ★	1866-1928 a fine mint or unused collection including S.G. 1, 5, 7 (2, one water-marked) and 8; 1887-89 CA values to 1/- with duplication and 1899-1928 almost complete fine mint except K.E. VII 2/6. (109)	£24
959	1866 perf. 12 white paper 1d. green and toned paper 6d. rose; 1867-68 perf. 15 1d. shades (2) and 1/- also coloured margins 1/- (2); 1879 CC perf. 14 1d. green; 1883-84 CA ½d. dull green, 1d. pale rose and 2½d. and 1887-89 CA 1d. to 1/- all mint or unused, fair to fine. (15)	£20
960 ★	1867-68 1/- with coloured margins on blued paper mint and fine. Cat. £60. Photo 8	£20
961	1899-1935 a complete mint collection with additional block of four 1913-19 1/- also three entires bearing various values to 6d. (71)	£20
962 ★	1937-68 a complete mint collection with an additional set in blocks of four of the 1938-47 issue also six covers one bearing the 1952 \$4.80. (186)	£23
Western Australia		
963 ○	1854 1d. black (2, used), 4d. blue (4) one unused, one with red cancellation and one with pronounced natural paper flaw and 1/- pale brown, fair to fine	£22
964 ★	— 4d. blue, a very fine unused strip of three, probably from top row of sheet	£15
965 ○	1857 2d. brown-black on red variety printed both sides and 6d. black-bronze worn impression both fair also 6d. grey-black fair, one corner clipped	£25
966 ○	1860 imperf. 6d. sage-green fine with small even margins, light "8" cancellation. Cat. £40	£12

Lot	Description	Valuation
Western Australia—contd.		
967	1860-93 a small mainly used collection including S.G. 34, 35, 39, 43 and 46 also an imperforate plate proof of the 1/- bright green watermark CC. (74)	£22
968 ○	1901 Presentation set of the then current Western Australia stamps with special c.t.o. bar cancellation as presented to members of the Australian States' Parliaments at the time of Federation with accompanying letter from R. A. Sholl the Deputy Postmaster General to F. Archer, Hobart a member of the Legislative Assembly	£12
Zanzibar		
969 ★	1895 on India overprinted in blue 1 an. plum fine mounted mint, with variety small second "z". Cat. £110. Photo 8	£40
970 ★	— overprinted in black ½a. to 12a. with both shades of 8a., 1r. green and carmine and 2r. to 5r. all mint also 1a., 2½a. (4), 4a. pair, 8a. and 1r. slate showing small second "z" and other varieties. (23)	£10
971 ★	— 2a. variety overprint double and 2½a. variety "Zanibar" both mint	£15
972 ★	— ½a., 1½a. to 12a. and 1r. green and carmine all in mint pairs mostly vertical, one stamp showing small second "z" with extra pair of 2½a. (22)	£10
973 ★	— ½a. to 1r. both colours, with some shades all showing small second "z" mostly below the normal level. (15)	£10
974 ★	— a similar lot but the small Z's above the normal level	£10
975 ○	— values to 1r. both colours, 2r., 3r. and 5r. also various values to 1r. all showing small second "z", good to fine used. (34)	£18
976 ○	1895 "2½" on 1½a.; 1896 (May) "2½" on 1a. plum the three types; 1896 (Aug.) "2½" on 2a. types (6) and (7) and 1896 (Nov.) "2½" on 1a. type (6) all good to fine used	£18
977 ★	— ditto, 1896 (Nov.) "2½" on 1½a. type (6) and 1898 (Jan.) "2½" on 1a. type (5), "2½" on 1½a. type (3) (2, one with small second "z"), type (4) and type (5) both with small second "z" all mint	£24
978 ★	1896 (May) "2½" on 1a. type (4) variety small second "z" and inverted "q" for "b" and type (5) variety small second "z" both mint	£13
979 ★田	1896 (Aug.) "2½" on 2a. pale blue (type 6) a mint block one stamp variety "J" inverted	£16
980 ★	— ditto, a single showing the same variety also one with normal "J" both with small second "z" and another type (7) fair to fine with some original gum	£10
981 ○	— ditto, a fine used single showing the same variety	£10
982 ★	— ditto, variety Roman "I" in "½" mint but a little soiled at top. Photo 8	£14
983 ★	1898 (Jan.) "2½" on 1a. type (3) fine mint	£10
984 ★	— "2½" on 1a. type (4) fine mint and showing small second "z"	£12
985 ○	— "2½" on 1a. type (5) with small second "z", "2½" on 1½a. sepia types (3) and (4) all fine used	£15
986 ★	— "2½" on 2a. type (3) (2, one in pair) with type (5) also a single example of the latter all mint. Cat. £34	£14
987	1896 stamps of British East Africa ½a. to 7½a. mint and used sets some with minor varieties of overprint	£20
988 ★	1896 (Sept.) ½a. to 5r.; 1897 "2½" on 4a. types (4) and (5) and 1898 (May) mult. wmk. ½a. to 8a. all mint. (33)	£14
989 ○	— ½a. to 5r. with shades; 1897 (Jan.) "2½" on 4a. the three types and 1898 (May) mult. wmk. ½a. to 8a. all fine used. (35)	£15
990 ★	1899-1901 ½a. to 5r. and 1904 provisionals set of five with duplicate "Two & Half" on 7½a. also "Two & Half" on 8a. with thin open "W" all mint. (25)	£24
991 ○	— ditto, a complete used set and 1904 provisionals set of five also S.G. 209a and 209b all fine used. (30)	£25
992 ★	1904 ½a. to 5r. a fine mint set. (15)	£18
993 ○	— ditto, a fair to fine used set. (15)	£15
994 ★	1908-09 1c. to 10r. mint but a few values somewhat soiled	£20
995 ○	— ditto, a fine used set	£20
996 ○	— 20r. black and yellow-green fine. Photo 8	£25

<i>Lot</i>	<i>Description</i>	<i>Valuation</i>
Zanzibar 1908-09—contd.		
997 ★	— 30r. black and sepia. Photo 8	£40
998 Ⓢ	— 50r. black and mauve overprinted "SPECIMEN" somewhat soiled. Cat. £30	£10
999 Ⓢ	— 100r. black and Antwerp blue and 200r. brown and greenish blue mint and overprinted "SPECIMEN". Cat. £110	£30
1000 ★	1913 1c. to 20r. a mint set a few low values slightly soiled	£25
1001 ○	— ditto, a good to fine used set. (16)	£21
1002 Ⓢ	— 30r. and 50r. both fine and overprinted "SPECIMEN". Cat. £33	£12
1003 ★	— 30r. black and brown mint	£20
1004 Ⓢ	— ditto, 50r. and 100r. and 1921-29 Script 1r. to 20r. overprinted "SPECIMEN" and 30r. perforated "SPECIMEN" (rather toned). (11)	£18
1005 ★	1914-22 MCA 1c. to 10r. a good to fine mint set. (16)	£12
1006 ○	— 1c. to 10r. (5r. cleaned); 1921-29 1c. to 5r. and 1926-27 Script 1c. to 75c. all fair to fine. (46)	£12
1007 ★	1921-29 Script 1c. to 20r. and 1926-27 Script 1c. to 75c. all mint. (32)	£21
Postage Due Stamps		
1008	1930-33 a fine unused and used collection values to 75c. with values to 21c. in unused blocks of four one stamp with stop between "t" and "s". (64)	£30
1009 ○	— 25c. black on magenta fine used, unpriced and rare (Cat. unused £70). Photo 8	£25
1010 ★田	— 31c., 50c. and 75c. each in a block one stamp variety stop between "t" and "s", scarce. (12)	£18
1011 匣	— 21c. black on orange and type with fancy border 6c. black on yellow each genuinely used on separate envelopes from Kampala, Uganda to Zanzibar and re-addressed back to Kampala. Very scarce	£20
Zululand		
1012 Ⓢ	1888-93 on Great Britain 5/- rose DC and 1894-96 £1 and £5 all overprinted "SPECIMEN". Photo 8	£20
1013 ★	1894-96 £1 purple on red very fine mint. Photo 8	£28

THE END OF THE SALE

VISIT STAMPEX

Britain's National Stamp Exhibition

Royal Horticultural Society's New Hall
Greycoat & Elverton Streets, London S.W.1

February 28 - March 4, 1972

Nearest stations St. James Park and Victoria



BURMA

by

GERALD DAVIS

and

DENYS MARTIN

PRICE £6

from

ROBSON LOWE LIMITED

Granville Chambers, Richmond Hill, Bournemouth

THE ROBSON LOWE

LONDON BOURNEMOUTH BASLE

AUCTION DIARY

22nd February GILBERT AND ELLICE ISLANDS, NEW HEBRIDES and SOLOMON ISLANDS, the fabulous Ray Baldwin collection to be sold in London. Catalogue 50p.

23rd February OVERSEAS Auction in London including fine Austria, Belgium, China, France and Greece. Catalogue 50p.

3rd March And on the first Friday of each month—GENERAL Sales in Bournemouth.

BASLE

14th March SHIPPING COMPANIES STAMPS, the unique collection formed by the late Julius Steindler. Over 1000 covers, 28 illustrations in colour, 273 in black and white. 2 vol. handbook. Catalogue £1 S.F. 10.

15th March UNITED STATES OF AMERICA. The specialised study of the first stamps, City Post from 1842, Inter-City Posts from 1844, Postmasters' Provisionals and many later rarities. A remarkable historical record. 2 vol. handbook. Catalogue £1 S.F. 10.

16th March A series of SPECIALISED studies including the French Antilles the fine research collection formed by Robert G. Stone, comprising GUADELOUPE including handstamps, French used in the Island (a tete-beche pair of 25c. used with 1 fr.). General Colonial issues with fine combination covers, the stamps of Guadeloupe, and the dependencies of St. Barthelemy and St. Martin, and MARTINIQUE with French Colonial General Issues. (Catalogue 50p S.F. 5). Also THE WORK OF JEAN DE SPERATI. A fine specialised study strong in British Empire, Austria, France, German and Italian States, Spain, Switzerland, U.S.A. and Latin America. Catalogue 50p S.F. 5.

21st/22nd March BRITISH EMPIRE Sale in London, over 1000 lots including Canadian and B.W.I. collections of the late Hyman Guth with British Guiana 1852 Waterlow litho 1c. on piece and 1856 Baum and Dallas 4c. initialled "EDW" Newfoundland 1892 1c. surcharged type II in black and type III in red, mint and St. Helena 1961 Tristan Relief F.D.C. Catalogue 50p.

18th April SCANDINAVIA Auction in London. A well balanced sale with Denmark and Danish West Indies including scarce "bicoloured" issues; Greenland, a valuable specialised section of "Pakke—Porto" stamps; Finland including a silver medal collection; Iceland with mint blocks of numeral issues in fine condition; Norway representative including local stamps and Sweden including a fine section of "Skilling Bancos". Catalogue 50p.

2nd/3rd May CHINA the second portion of the vast "Kauder" collection including sections of early historical letters, private letter posts, airmails and provincial issues, foreign post offices, Formosa, Tibet, etc. Catalogue 50p.

16th/17th May REVENUE and RAILWAY stamps of the world excluding the United States portion, a specialised study covering parcel and telegraph stamps, revenue stamps postally used and postage stamps fiscally used as well as essays, proofs, colour trials and imprimaturs, "Specimen" and "Cancelled" overprints. Handbook catalogue £2 (surface mail) £2.75 (airmail).

BRITISH EMPIRE GENERAL GREAT BRITAIN
OVERSEAS POSTAL HISTORY

ST. VINCENT

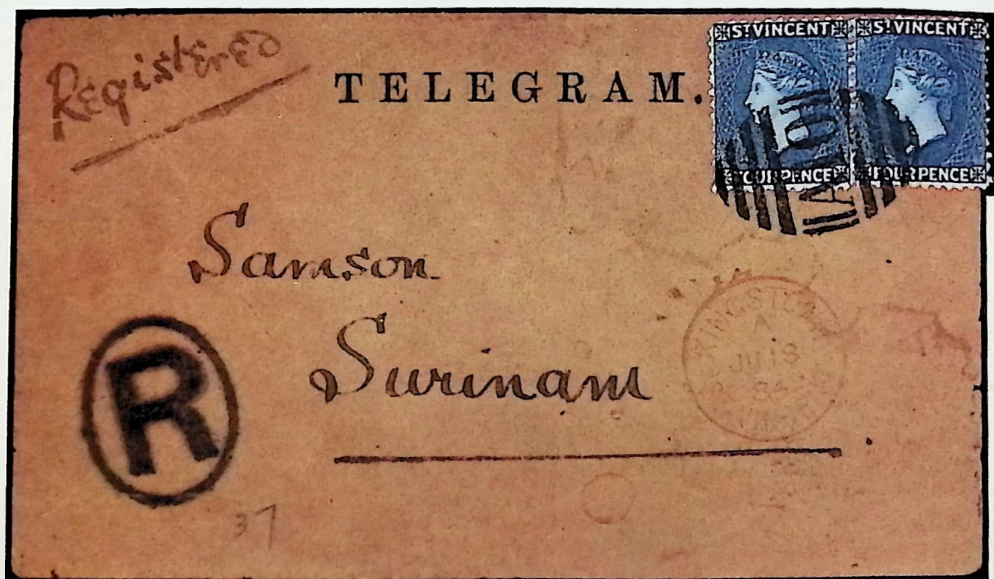
by

ARTHUR PIERCE

J. L. MESSENGER

ROBSON LOWE

THE POSTAL HISTORY FROM	1762-1915
THE POSTAGE STAMPS FROM	1861-1897
THE CANCELLATIONS AND HANDSTAMPS	1861-1915
THE REVENUE STAMPS	1882-1897



1884 the origin of the telegram was probably London but, at the time, the laying of the marine cable across the Caribbean had not been completed further than St. Vincent, from where the message was forwarded by registered post. The stamps are issue 24, the Four Pence dull blue perforation 12. The Kingston datestamp is No. 36 described on page 104.

Library Edition

£10