

# THE 'LIONHEART' COLLECTION OF GREAT BRITAIN AND BRITISH EMPIRE - PART XI

MAP OF THE WORLD,  
SHOWING THE EXTENT OF THE BRITISH TERRITORIES IN 1786.



# SPINK

WHERE HISTORY IS VALUED

29 JANUARY 2020

LONDON





# THE 'LIONHEART' COLLECTION OF GREAT BRITAIN AND BRITISH EMPIRE - PART XI

Sale Venue:

At The Royal Philatelic Society London

15 Abchurch Lane

2nd Floor

London

EC4N 7BW

tel +44 (0)20 7563 4005 fax +44 (0)20 7563 4037

Vat No: GB 791627108



Sale Details | Wednesday 29 January 2020 at 10.00 a.m.

When sending commission bids or making enquiries,  
this sale should be referred to as **LIONHEART - 20011**

Viewing of Lots | At Spink London  
Monday 27 January 2020 at 10:00 a.m. – 5:00 p.m.

| At The Royal Philatelic Society London  
Tuesday 28 January 2020 at 10:00 a.m. – 5:00 p.m.

| Private viewing by appointment only

Live platform | **SPINK**  **LIVE**

---

## Your Specialists for this Sale



**Joshua Barber**  
jbarber@spink.com  
+44 (0)20 7563 4080



**Nick Startup**  
nstartup@spink.com  
+44 (0)20 7563 4073

### Bids

**Dora Szigeti**

auctionteam@spink.com  
+44 (0)20 7563 4005  
fax +44 (0)20 7563 4037

### Internet Bidding

**Michael Lewis**

support@spink.com  
+44 (0)20 7563 4090

### Payment Enquiries

**Veronica Morris**

creditcontrol@spink.com  
+44 (0)20 7563 4018

### VAT Enquiries

**John Winchcombe**

jwinchcombe@spink.com  
+44 (0)20 7563 4101

## The Spink Environment Commitment: Paper from Sustainable Forests and Clean Ink

Spink has a long history of preserving not only collectables but our planet, too. We are proud to ensure that our policy of sustainability and conservation keeps up with Spink's growth, helping improve the environment for new generations of collectors.

We insist that our printers source all paper used in the production of Spink catalogues from FSC and/or PEFC suppliers and use non-hazardous inks. We also ask they hold the environmental standard ISO 14001.

Spink recycle all ecological material used on our premises and we encourage you to recycle your catalogue once you have finished with it.

Front Cover Illustrations: 30, 48, 63, 106, 148, 171, 189, 195, 222 Back Cover Illustrations: 245, 196

Inside Front Cover Illustrations: 113, 249 Inside Back Cover Illustration: 147

www.spink.com

@SpinkandSon

#Spink\_Auctions

Spink\_auctions

Spinkauctions

Spink\_auctions



## Group Chairman and CEO

Olivier D. Stocker

## Directors

Tim Hirsch FRPSL

## Chief Financial Officer

Alison Bennet

## Head of EMEA

Mira Adusei-Poku  
mpoku@spink.com

## Global Head of Banknotes and Bonds

Kelvin Cheung  
kcheung@spink.com

## Specialists

### Stamps

Tim Hirsch FRPSL  
David Parsons  
Nick Startup  
Neill Granger FRPSL  
Dominic Savastano  
Josh Barber  
Thomas Fell  
Ian Shapiro (Consultant)  
Guido Craveri (Consultant)  
Christopher Green  
George Yue (Consultant)  
Alan Ho

### Bonds & Shares

Mike Veissid (Consultant)

### Books

Emma Howard  
Nik Von Uexkull  
Olivia Rae Marshall

## Client & Auction Management

Geoff Anandappa  
Dora Szigeti  
Nik Von Uexkull  
Benedetta Fusco  
John Winchcombe  
Finnian Spencer  
Samantha Lanevi  
Newton Tsang  
Katrina Chan

## PR & Marketing

Rita Ariete  
Alzbeta Lanova

## Chief Customer Officer

Rita Ariete

## Head of Americas

Charles J Blane  
cblane@spink.com

### Coins

Richard Bishop  
Tim Robson  
Gregory Edmund  
Lawrence Sinclair (Consultant)  
Barbara Mears  
Greg Cole  
Kin Choi Cheung  
Paul Pei Po Chow  
Joseph Lam

### Historical Documents

Thomas Fell  
Neill Granger FRPSL  
Ian Shapiro (Consultant)  
Greg Cole

### Finance

Alison Bennet  
Sue Pui  
Marco Fiori  
Mina Bhagat  
Dennis Muriu  
Veronica Morris  
Nicholas Waring

## Representatives For Australia

Peter Griffiths - pgriffiths@spink.com  
Michael R. Downey - mdowney@spink.com

## Representative For Canada

Timothy J. Stewart - tstewart@spink.com

## Representative For Japan

日本での弊社オークションへの出品・参加に関してのお問い合わせ  
Alan Ho - japan@spink.com

## Representative For South Africa

Andrew Kennedy - akennedy@spink.com

## Chief Operating Officer

Mira Adusei-Poku

## Head of Asia-Pacific

Sue Pui  
spui@spink.com

### Banknotes

Barnaby Faull  
Elaine Fung  
Arnas Savickas  
Henrik Berndt (Consultant)  
Harris Webb  
Greg Cole  
Paul Pei Po Chow

### Orders, Decorations & Medals

Marcus Budgen  
Iain Goodman  
Jack West-Sherring  
Greg Cole

### Wine & Spirits

George Koutsakis

### Special Commissions

Ian Copson  
Robert Wilde-Evans

### IT & Administration

Michael Lewis  
Berdia Qamarauli (Consultant)  
Liz Cones  
Slawomir Kolsut  
Tom Robinson  
Newton Tsang  
Jacqueline Wong

### Spink UK

69 Southampton Row  
Bloomsbury  
London  
WC1B 4ET  
Email:  
conciierge@spink.com  
Tel: +44 (0)20 7563 4000  
Fax: +44 (0)20 7563 4066

### Spink USA

145 W. 57th St.  
18th Floor  
New York, NY  
10019  
Email:  
usa@spink.com  
Tel: +1 646 941 8664  
Fax: +1 646 941 8686

### Spink China

4/F and 5/F  
Hua Fu Commercial  
Building  
111 Queen's Road West  
Sheung Wan  
Hong Kong  
Email:  
china@spink.com  
Tel: +852 3952 3000  
Fax: +852 3952 3038

### Spink Asia

Registered at:  
50 Raffles Place  
#17-01 Singapore Land  
Tower  
Singapore 048623  
Email:  
singapore@spink.com

### Spink Switzerland

Via Livio 8  
6830 Chiasso  
Switzerland  
Email:  
switzerland@spink.com  
Tel: +41 91 911 62 00  
Fax: +41 91 922 20 52



# SPINK

WHERE HISTORY IS VALUED

## PHILATELIC COLLECTORS' SERIES

30 JANUARY 2020 | LONDON | RPSL

A fine selection of Great Britain including postal history,  
line engraved and modern errors



*STUNNING PRUSSIAN BLUE PAIR ON COVER*

For further information please contact Thomas Fell:

Tel. +44(0)20 7563 4076 | Email: [tfell@spink.com](mailto:tfell@spink.com)

SPINK LONDON | 69 Southampton Row | WC1B 4ET | United Kingdom

[WWW.SPINK.COM](http://WWW.SPINK.COM)

## Extensions

Prospective buyers who wish to obtain an expert opinion on any lot (other than a mixed lot or lot containing undescribed stamps) are requested to notify Spink in writing not less than forty-eight hours before the time fixed for the commencement of the first session of the sale. If accepted by Spink, such request shall have the same effect as notice of an intention to question the authenticity of the lot for the purposes of Condition 3.4 of our Terms and Conditions for Buyers.

Notice of a request for an expert opinion must give the reason why such is required and specify the identity of the expert which will be subject to the agreement of Spink. All lots for which Certificates of Authenticity are desired must be submitted by Spink to the Expert Committee for choice.

**Buyers are reminded that any lot(s) purchased “on extension” are subject to payment in accordance with our normal Terms & Conditions of Business. Settlement of any lots on extension should be made at the time of invoice payment. Overdue accounts are subject to interest charges.**

Extensions requested on account of condition will not be accepted for expert opinions. Any Lot described as having faults or defects may not be returned should a certificate cite other faults or defects not included in the catalogue description.

Should Spink accept a request for an extension under the foregoing provisions of this paragraph, the fact may be stated by the Auctioneer from the rostrum prior to the sale of the lot.

It should be noted that any stamp accompanied by a Certificate of Authenticity is sold on the basis of that Certificate only and not on the basis of any other. No request for an extension will be accepted on such a stamp and the return of such a stamp will not be accepted.

## Notes Concerning Descriptions

**GUM:** Original gum should be expected on unused stamps where appropriate, unless stated otherwise in the description:

mint	unused with original gum showing slight disturbance caused by previous hinge, which may be present in part or entirely removed
part original gum	unused with original gum significantly disturbed or heavily hinged
unmounted mint	original gum as issued
unused	without gum

**COVERS:** Should be expected to have minor nicks and tears usually from opening. Folded letters or covers normally have one or two file folds. These are not described unless of an exceptional nature and are not grounds for return.

entire letter	complete as sent with comments still attached to the outer address portion
entire	the outer portion of a folded letter but without contents
cover	an envelope

## Symbols and Abbreviations

⊗	unmounted mint	d.s.	datestamp
★	unused	h.s.	handstamp
○	used	Ⓐ	air mail
⊞	block of four	Ⓢ	specimen
⊞	block larger than four	Ⓒ	cancelled
⊞	used on cover, entire letter, etc.	Ⓔ	essay
△	on piece	Ⓟ	proof
var.	variety, varieties	F	forgery
cat.	catalogue, catalogue value	R	reprint
c.d.s.	circular datestamp		

## References

Catalogue values and numbers are those taken from the latest available edition.

The use of Gibbons Specialised catalogues in Great Britain sales is clearly indicated. Where other catalogues are used they are mentioned by name.

**Buyers are reminded that payment must be made within seven days from the date of sale (condition 5.4.1), and interest will be added for overdue accounts (condition 5.10.1.1).**

**Please note charges for credit card payments (condition 5.4.3(iii)).**

**Buyers are reminded that if they default on a successful bid that details relating to such default may be shared with other auction houses and live bidding platforms (condition 5.11).**



**Note:** All buyers must read the notes concerning requests for Extensions printed on page 4 of this catalogue.

The Terms of that notice must be complied with fully under all circumstances.

Please note that 'Spink Live' is now running on a new and improved on-line bidding platform, which is accessible through [www.spink.com](http://www.spink.com) and also as a SpinkLive app available for download from the App Store.

You can continue bidding online free of charge.

**WEDNESDAY 29 JANUARY 2020**

**Commencing at 10.00 a.m.**

**GREAT BRITAIN**



Ex 1

x1 ☒

A group of covers and entires (6) comprising 1840 1d. black EK with good to large margins cancelled with black Maltese Cross to Piccadilly, LD with close to good margins cancelled with red Maltese Cross to Birmingham, QK with close to average margins to Lanark, SC cancelled with red Maltese Cross (envelope truncated); 1840 2d. blue EC cut into at left on cover to Blairgowrie and PK cut into at foot cancelled by black Maltese Cross, condition a little mixed, still an attractive group. Photo

£400-600

Great Britain - *contd.*

1867-83 Surface Printed



2



3



4

- x2 ○

Watermark Maltese Cross 10/- greenish grey, plate 1, AF centred slightly to top, cancelled by crisp part c.d.s. of JU 21/82; short perfs to upper left. S.G. 128 £3,200. Photo

£400-600
- x3 ○

Watermark Anchor 5/- rose on blued paper, plate 4, AE, a superbly well centred example with crisp CHARING CROSS NO 17/ 83 c.d.s.; light blue crayon to left, fine. S.G. 130, £7,000. Photo

£400-600
- x4 ○

Watermark Anchor, white paper £1 brown-lilac, plate 1, EH centred slightly to lower left, cancelled by very clear strike of GLASGOW NO 2/83; purple ink mark on reverse just showing through at 'E' of 'POSTAGE', otherwise fine and attractive. S.G. 136, £7,000. Photo

£1,000-1,500



Ex 5

- x5 ⑤

1881-1937 collection each overprinted 'SPECIMEN' (Type 9) including 1881 1d. (12), 1883-84 ½d. to 1/- (up to ten of each value), 1884 2/6d. on blued paper (12), 5/- (10), 10/- (8), £1 brown Watermark Crowns (4, one defective), 1887 Jubilee set of ten (seven of each value) and 1912 1/- and 1937 1/-; chiefly fine with fresh appearance; minority with faults or slightly stuck down. S.G. £50,000+. Photo

£6,000-8,000





6



7

- x6 ★ 1883-84 Watermark Anchor, white paper 10/- ultramarine, JA, fairly well centred example, slightly to the left, nice colour; some lightly trimmed perfs and regummed. S.G. 183, £2,250. Photo £200-400
- x7 ★ 1891 Watermark Crowns £1 green, HB, well centred and good colour, large part lightly toned gum, very lightly mounted. Signed A. Diena, S.G. 212, £3,500. Photo £500-700
- 
- x8 A mainly used selection on Hagner pages including 1854 Embossed 6d. red-violet, 1862 3d. pale rose, 1867 5/- rose plate 2, 1884 5/- carmine-rose (both mint and used), 1902-11 2/6d. to 10/-, 1902 £1 blue-green, 1913 Seahorses £1 green, 1919 Seahorses 2/6d. to 10/- mint, also Ireland 1922-23 ½d. to 10/- etc; condition a little mixed, some fine, with high catalogue value £2,000-4,000

### ANTIGUA

- x9 ★ 1872-1970 mint collection including 1872 CC perf 12½ 1d. lake with watermark reversed and 1d. red, 1882 CA 2½d. and 4d. (both regummed), 1884 CA perf 12 1d. (2), 1884-87 CA 2½d. with large "2" in "2½" with slanting foot (lightly toned), 6d. and 1/- (2, one lightly toned), 1903-07 CC ½d. to 2/6d. plus 5/- (light stains on reverse), 1908-17 MCA to 2/- with some duplication and 6d. marginal block of nine, 1913 5/-, 1921-29 MCA 3d. to £1 and Script ½d. to 4/- (only one 2½d. blue shade), 1932 Tercentenary and 1935-70 complete (unmounted), fine. Cat. £3300+ £600-800
- x10 ☺ 1884-1966 mint collection with Specimen overprints or perforations to 1946 with two sets of each from 1932-46, issued stamps from then on (still two of each), chiefly fine plus Barbuda Specimen set. S.G. £3,200+ £600-800

### ASCENSION

- x11 ★ 1922-70 mint collection including 1922 (Nov.) ½d. to 3/- (2 sets), 1924-33 ½d. to 3/- with both shades of 1d. plus ½d. corner pair and 8d. corner single showing *cleft rock*, 1934 ½d. to 5/-, 1938-53 ½d. to 10/- with perf changes and complete from then on, all apparently unmounted, the odd one with gum toning otherwise fine. Cat. £2600+ £550-650

**BAHAMAS**



Ex 12

- x12 ★ ⑤

1884-1965 mint collection on stockpages starting with 1884-90 CA set to £1 then Specimen sets to 1946 including two of each from 1931 including 1938-52 (one missing a 3d.) and 1942 sets, issued stamps from 1948 to 1965 with two of each; chiefly fine. S.G. £6,500+. Photo

£1,800-2,400
- x13 ○

1901-48 fine used collection on album pages including 1901-03 set of four plus 3/- watermark inverted and reversed, 1902-10 set to 5/-, 1912-19 set to £1 (two of each), War Stamps including on cover, 1920 set to 1/-, 1921-37 set to £1 ( and shades), 1930 set to 3/- with duplication, 1938-52 set to £1 and shades etc; chiefly good to fine

£800-1,200

**BARBADOS**



Ex 14

- x14 ★

1861-70 6d. dull orange-vermilion marginal block of four from the left of the sheet, variety **imperforate**, large part original gum, fine. Also 1872 wmk. Large Star, clean-cut perf 14½ to 15½, 6d. orange-vermilion pair with sheet margin at right, variety **imperforate**, unused without gum, fine. R.P.S. Certificate (1990) for block. S.G. 32a, 60b; £1,600. Photo

PROVENANCE:  
Dempsey J. Prappas, 1995  
Edward Gilbert, June 2005

£300-400
- x15 ★

1892-1935 mint collection on Hagner pages including 1892-1903 CA ½d. to 2/6d. set of eleven, 1897-98 Jubilee set to 2/6d., 1905 MCA set to 2/6d., 1906 Nelson ¼d. to 1/-, 1909-10 MCA set to 1/-, 1916-19 MCA ¼d. to 3/- with some shades, 1920 MCA 3/- green and bright violet etc, chiefly fine. Cat. £1,900+

£400-600



**BASUTOLAND**

- x16 ☉ 1932-66 complete basic unmounted mint collection with some 1961 surcharge types including 2c. on 2d. with surcharge inverted, 10c. Type II and all three 1r. types, fine; some light toning in places. S.G. 1-105, £1,400+ £300-400

**BECHUANALAND**

- x17 ☉ 1885-1960 selection on stock pages of mainly Specimen sets including a couple of 1885 Cape overprints handstamped 'SPECIMEN', 1888 ½d. vermilion, 1888 set of twelve to £5, 1891-1904 set of four, various Jubilee issues, Waterlow 1914 Seahorse set of two, 1932 set and 1935 Jubilee set perforated 'SPECIMEN' (two sets of each), 1932-58 Postage Due set of three (two sets) and 1947 Royal Visit (two sets) then issued stamps from 1948 Silver Wedding including 1955-58 set of twelve, of which there are two sets; chiefly fine and fresh. S.G. £3,700+ £700-900



18

- x18 ★ British Bechuanaland 1888 £1 lilac and black, lightly mounted mint; fresh and fine. S.G. 20, £900. Photo £250-350



Ex 19

- x19 ★田 Bechuanaland Protectorate 1938-52 set of eleven to 10/- in blocks of four, chiefly very lightly mounted on one stamp only, some unmounted; fine. S.G. 118-128, £440. Photo £100-200

**BERMUDA**



Ex 20

x20 ☉ 1865-1968 collection on stock pages with mainly Specimen sets including 1883-1904 set of three, 1901 ¼d. on 1/-, 1906-10 set of seven, 1910-25 set of nine, 1918-22 set to £1, 1920-21 set of nine, 1924-22 set to 12/6d. etc. then two sets of each from 1935 Jubilee to 1946 Victory set including 1938-53 set to £1, after which there are still two of each issued stamp to 1966 new currency set; chiefly fine. Photo £2,000-4,000

x21 ★ 1865-1970 mainly mint collection on leaves including 1865-1903 perf. 14 1d. to 1/-, perf. 14x12½ 3d. to 1/-, 1874 type 6 3d. on 1/- (not guaranteed), 1906-10 to 4d., 1910-25 to 1/- (both), 1918-22 MCA 2/- to £1, 1920-21 and 1921 Tercentenary sets with 1920-21 values to 1/- in blocks of four, 1922-34 to 1/- and 1924-32 Script 2/-, 2/6d. (2), 10/-, 12/6d., 1936-47 Pictorials to 1/6d. in blocks of four, 1938 first printing 2/- to £1, all mint, chiefly good to fine £700-900



Ex 22



Ex 23



24

x22 ★ 1910-25 MCA set of nine to 1/- (two sets) and 1918-22 MCA set to £1 (two sets), chiefly lightly mounted mint, fine. S.G. 44-55, £1,300+ ( as cheapest). Photo £260-320

x23 ★ 1924-32 Script CA 2/-, 2/6d., 10/- green and red on pale emerald, 10/- green and red on deep emerald and 12/6d. (2) set of six, very lightly mounted. S.G. 88-93, £900+. Photo £200-300

x24 ○ 1937 Postal Fiscal 12/6d. grey and orange, cancelled by clear central HAMILTON/ 12 FEB 37/ BERMUDA c.d.s., fine. S.G. F1, £1,500. Photo £300-400

x25 ⊕ 1937-53 unmounted mint collection on pages with a range of low values including comb perfs, Key Types 2/- (5, and a block of six), 2/6d. (6, and a block of four), 5/- (5), 10/- (4 mint plus 3 used singles and a used pair), £1 (9 and a block of four) etc. also the 5/- pink booklet (one 1d. stamp removed) and 10/6d. Airmail blue booklet complete; chiefly fine £500-600



**BRITISH ANTARCTIC TERRITORY**

- x26 ☉ 1963-79 unmounted mint collection complete to 1977 (Jan.), plus Australian Antarctic Territory 1957-73 complete unmounted mint. Cat. £580 £80-100

**BRITISH EAST AFRICA**



27

- x27 ★ 1895 2½ on 1½a. sepia, **unissued, surcharged Type 14 in brown-red**, lightly mounted mint, fine. S.G. 64 footnote, £150. Photo £70-100

**1897-1903 Watermark Crown CC**



28

- x28 ★ 4r. carmine with **watermark reversed** and 5r. deep sepia, both unused with part original gum; each with light diagonal gum bends not detracting from the appearance. S.G. 95x, 96, £1,300. Photo £250-350



29

- x29 ☉ 20r. pale green and 50r. mauve, each overprinted 'SPECIMEN' in black, part original gum; the 20r. with a couple of light gum bends. S.G. 98s-99s, £580. Photo £150-250

**BRITISH GUIANA**



30

- x30 ○ 1852 (1 Jan.) surface-coloured paper, 1c. black on magenta, good regular margins and lightly cancelled with Demerara double-arc date-stamp for 13th March 1855; free of the usual surface rubbing associated with this stamp, very fine and scarce in such fine condition. R.P.S. (1968) and Holcombe (1992) Certificates. S.G. 9, £5,500. Photo £3,000-6,000

PROVENANCE:  
Edward Gilbert, 2005



Ex 31

- x31 ○ 1853-188 Ship Types Issue mainly used collection on pages including 1853 1c. vermilion used pair with BERBICE/ JA 27/ 1856 cancellation, 1853-55 4c. blue (8), 1860-63 Perf. 12 1c., 2c. (6) 4c. (5), 8c. brownish rose mint and used (3) and 8c. pink mint and used, 12c. (6) and two pairs, 24c. (4), 12c. with large '5d.' re-payable in red (7), 1861 reddish brown mint and used (4), 1862-65 Thin Paper used selection (44) with values to 24c., 1862-65 Medium Paper (80+) including mint and used pairs, a block of four etc.; mixed condition but chiefly good to fine with huge catalogue value. Photo £5,000-7,000



Ex 32

- x32 1853-1954 mint and used selection on double sided stockpages including a variety of Ship Type Issues in mixed condition with 1853-59 1c. used (2, one cut into) and 4c. used (2), some 1860-63 issues mint and used, 1862 1c. rose unused and 2c. yellow used, from 1881 chiefly unused with complete sets and some varieties; overall fine, condition mixed on some early issues. Photo £2,000-3,000

- x33 1876-79 CC set of nine, chiefly fine used, 1905-07 Crown CA set of eleven, large part original gum and \$2.40 Postage and Revenue unused with large part original gum. S.G. 126-134, 240-251, £625 £130-160





Ex 34

- x34 ★ 1888-89 Inland Revenue Surcharged set of fifteen, chiefly large part original gum. S.G. 175-189, £2,000. Photo £400-800
- x35 © 1905-54 selection of mainly Specimen sets from Post Office archives including 1905 48c., 96c. and \$2.40, 1921-27 set of eleven, 1934-40 set of thirteen, 1935 Silver Jubilee, 1937 Coronation, 1938-52 set to \$3, 1946 Victory and 1940 Postage Due set; also issued stamps including 1948 Silver Wedding and 1954-63 set to \$5; chiefly fine and lightly mounted to album pages. S.G. £1,500+ £300-500

**BRITISH POST OFFICES IN CHINA**



Ex 36

- x36 © 1905-21 selection of Issued and Specimen stamps from Post Office archives including China Expeditionary Force 1905 set to 1r. and 1914-22 set of eleven to 1r., 1917-21 China overprint Issued stamps from 1c. to 30c. and set of six from 50c. to \$10 overprinted 'SPECIMEN', fine and fresh; scarce, lightly mounted to album pages. S.G. £2,800+. Photo £600-800

**BRITISH SOLOMON ISLANDS**

- x37 ★ 1907-68 mint collection in a stockbook, complete less 1914 10/-, 1927 1/- and 1968 (May) 2c., some duplication including Large Canoes to 1/- and 1914 £1, virtually all unmounted, fine. Cat. £2100+ £400-500

**CAMEROONS**

**Expeditionary Force**



38

- x38 ★ 1915 1/- on 1m. carmine and 2/- on 2m. blue, large part original gum, fine. S.G. B10-B11, £425. Photo £100-200

**CANADA**



Ex 39

x39 ②⑤

1859 12½c., a group of imperforate proofs on India paper comprising yellow-green pair with vertical 'SPECIMEN' in carmine, yellow-green with vertical 'SPECIMEN' in black, blue with Type A vertical 'SPECIMEN' in carmine, orange-yellow and black with Type A vertical 'SPECIMEN' in carmine, each with four margins, chiefly fine; also an unused example of the issued stamp. S.G. 39 var. group, Unitrade 18Pi, 18Pii, 18TCii, 18TCv, 18TCviii, C\$2,450+. Photo

£400-500



Ex 40

x40

1859-1897 mint and used collection on pages including 1859 Cents Issue with 1c. (3), 5c., 10c., 12½c. (2) and 17c. (2), 1864 2c. (2), 1868-90 values to 15c. with Ottawa and Montreal printings, range of perforations etc., 1893 20c. and 50c., 1879-98 with duplicated values to 8c., 1898-1902 to 20c. including 2c. with kiss print with Green Foundation (2002), range of pre-cancels, 1879 Jubilee to 50c. (2) and \$1 with some duplicated lower values, chiefly good to fine. Photo

£2,000-3,000



Ex 41



42

x41 ★

1865-1912 selection of mainly mint ex-auction lots (16) including 1889-1897 Small Queen 10c. brown red (2), 1897 Jubilee ½c. to 50c. (1c. oxidised), 1897 and 1898 Leaf and Numeral sets on pages (foxing in places), 1897-98 Leaf 6c. to 10c, additional 10c. brownish purple, 1898 Numeral ½c. to 3c. blocks of four, 10c. and 20c. singles, 1875-88 Registration labels (5), 1908 Quebec Tercentenary set to 20c., 1912-25 Admiral issues to \$1 etc. chiefly fine. Photo

£700-900

x42 ★田

1870-90 Small Queen 3c. **copper or Indian red block of four**, lightly mounted with minor gum bend, a scarce multiple of this difficult shade, fine. Unitrade 37b, C\$ 8,000, S.G. 79, £4,400. Photo

£800-1,000



Ex 43

x43 ©

1897 Jubilee Issue set of sixteen plate proofs, ½c. to \$5, vertical pairs on card; very fine, some very scarce. S.G. 121-140 var; Unitrade 50p-65p C\$14,000. Photo

£2,000-4,000



Ex 44

x44

1897 Jubilee Issue mint and used selection comprising used: ½c. (2), 1c.-5c., 6c. (2), 8c, 10c. (2), 15c. (2), 20c., 50c. (2), \$2 (3), \$3 and \$4; mint: 5c. (1 and a block of four), 6c., 15c., 20c., 50c., and \$1; chiefly fine, \$3 and \$4 with smudged cancellations. S.G. 121-139, £5,300+. Photo

£600-800



45

x45 ★田

1898-1902 20c. olive-green block of four, unused with the lower pair remaining unmounted, fine. Unitrade 84 C\$8,000, S.G. 165, £1,300. Photo

£300-400



**CAPE OF GOOD HOPE**



Ex 46

x46 1853-64 mint and used group of Cape Triangles including two used 4d. blue pairs (one with Ferchenbauer Certificate) and a 4d. blue used on cover to Middelburg, Woodblock 4d. (2), values to 1/- (3) etc. mixed condition but with very high catalogue value, viewing essential. Photo £1,500-3,000



47

x47 ★ 1858 1/- bright yellow-green, large even margins and clear crisp impression, unused without gum, fine. S.G. 8, £3,500. Photo £1,500-2,000

**Mafeking**

**1900 (Mar.-Apr.) Serifed Overprints**



48

x48 ★ Bechuanaland Protectorate 6d. on 3d. purple on yellow, part original gum; fine. B.P.A. Certificate (2014). S.G. 9, £7,500. Photo £1,500-3,000

**1900 (Apr.) Sans-Serif Overprints**



49

x49 ★ Bechuanaland Protectorate 6d. on 2d. green and carmine, small part original gum; very rare unused, fine. S.G. 13, £1,600. Photo £400-600

**CAYMAN ISLANDS**



Ex 50

x50 ★

1900-62 largely complete mint collection on pages, missing only the 1908 2½d. on 4d. surcharge and scarce 1917 Type 16 War Stamp overprint from the basic issues, other sets complete to 1962 and includes both ½d. and 1d. on 5/- salmon and green and 1932 Centenary set in chiefly fine condition. S.G. 1-179. Photo

£700-900



Ex 51

x51 ★

1900-1970 mint collection in a stockbook including 1907 MCA set to 5/-, all 1907 Provisionals, 1907-09 MCA set to 10/-, 1921 MCA and Script sets each to 10/-, 1935 set to 10/-, War Stamps, more modern sets in blocks of four etc. A useful lot with high catalogue value in fine condition. Photo

£1,000-1,500

**1907 Surcharges**



52



53

x52 ★

½d. on 5/- salmon and green, **surcharge double**, large part original gum, fewer than fifteen examples are recorded, attractive and scarce. Philatelic Foundation (1986) and Holcombe (1989) Certificates. S.G. 18b, £12,000. Photo

£2,500-3,500

x53 ★

1d. on 5/- salmon and green, large part original gum. S.G. 19, £275. Photo

£100-120

## CEYLON



54



55



56

- x54 ○ 1859 (23 Apr.) 4d. dull rose, close to large margins, cancelled by oval of bars; a little faded otherwise fine. B.P.A. Certificate (1956), S.G. 4, £4,500. Photo £400-500
- x55 ○ 1859 (23 Apr.) 8d. brown, good margins, cancelled by light oval of bars, fine. B.P.A. Certificate (1961), S.G. 7, £1,500. Photo £400-600
- x56 ★ 1857-59 10d. dull vermilion, unused with original gum, close to good margins. Holcombe Opinion (1988), S.G. 9, £900. Photo £150-250
- x57 1857-1946 mint and used collection on hagner pages, over three-hundred stamps in mixed condition but with a range of early issues both mint and used, predominantly mint from 1866 onward along with a range of 'SPECIMEN' stamps, Surcharged Issues, Officials, War Stamps and Commemorative sets; condition a little mixed on early issues, chiefly fine from then on £800-1,000



Ex 58

- x58 1857-1954 mint and used accumulation of hundreds on pages, stockcards etc. with early imperforate examples including 1d. deep blue mint (3 and a pair) and huge quantity of used, 2d. green mint (5) and also mint pair along with a large range of used examples, 8d. mint, 10d. vermilion mint (5) and huge range of used, 1/9d. mint and used, 1857-64 ½d. dull mauve unused, 1861-64 perforated examples in huge quantity, a selection of reprinted Die Proofs etc; condition mixed but plenty good to fine. Photo £1,700-1,900
- x59 1861-66 mint and used selection including Watermark Star 1d. blue unused (2) and used (11, two defective), 4d. dull rose used (6), 6d. brown unused (2) and used (10), 8d. used, 9d. used (16), 10d. used (8), 1/- used (7, and one on piece with 1d. and two used pairs), 2/- unused (2) and used (3), 1/9d. prepared for use but not issued (2), 1864 10d. used (12, also two pairs and two used on pieces); condition mixed with a few faults, high catalogue value £800-1,000





60



Ex 61

- x60 ☉ 1883-98 24c. brown-purple prepared for use but not issued unsurcharged, overprinted 'SPECIMEN', large part original gum; fine and scarce. S.G. 152s, £800. Photo £200-300
- x61 ☉ 1927-29 Script 1r. to 20r. set of five, unmounted lightly toned gum; scarce unmounted. S.G. 363-367, £350. Photo £100-150

**COOK ISLANDS**

- x62 ☉ 1892-1967 mint collection in a stockbook including 1892 1d. (3) and 1½d., 1893-1900 perf 12x11½ 1d. blue, 2½d., 5d. and 10d., perf 11 ½d. (2), 1d. blue, 1d. brown (3), 1½d. (2), 2d. (2), 2½d., 5d., 6d. (3), 10d. (3) and 1/-, 1899 ½d. on 1d., 1902 (Sept.) 1/-, 1932 ½d. to 1/-, 1921-23 2/- to £1, 1924-27 ½d. to 4d., 1936-44 Cowan 2/6d., 5/- and £1, Wiggins Teape 2/6d., 10/- and £3, 1938 1/-, 2/- and 3/-, 1943-54 2/6d. to £5, 1944-46 ½d. to 3/- (1/- gum toned), 1949-61 ½d. to 3/-, 1963 1d. to 5/- and 1966 Air 6d. to £1 with additional £1 (2) with aeroplane omitted and 1967 1c. on 1d. to \$10 on \$5, the vast majority unmounted. Cat. £3500+. Photo £550-650



63



64

- x63 ★ 1932 1d. black and lake with **centre inverted**, very lightly mounted mint; fine example of this very scarce stamp. R.P.S (2006) and B.P.A. (2007) Certificates, S.G. 100a, £8,500. Photo £2,000-4,000
- x64 ☉ 1932 2d. brown with **centre inverted**, unmounted mint, very light vertical gum bend; striking and attractive. A.P.S. Certificate (1999), S.G. footnote after no. 105, £500. Photo £100-200



*The Royal Philatelic Society London*

We are pleased to receive proposals for membership of the Society which is through election.

If you are interested in membership, please contact us at [secretary@rpsl.org.uk](mailto:secretary@rpsl.org.uk)

If you have no proposer or seconder, please contact us for further information.

Tel: 00 44 (0)20 7486 1044 | [www.rpsl.org.uk](http://www.rpsl.org.uk)

The world's oldest and most prestigious philatelic society, established 1869, with over 2,000 members in more than 70 countries.

\*\*\*

Extensive premises in London's West End house the Society's superlative library, plus Museum and Archive, and provide first-class meeting facilities.

\*\*\*

The Society's Online Catalogue provides access to over three-quarters of a million philatelic indexes to members world-wide.

\*\*\*

A fascinating programme of displays and meetings throughout the year, supplemented by regional meetings and gatherings at major international events.

\*\*\*

The Society publishes ten times a year its own journal, *The London Philatelist*, containing articles of outstanding philatelic research, in addition to publishing major philatelic works.

\*\*\*

We are honoured to have Her Majesty Queen Elizabeth II as our Royal Patron

## CYPRUS



Ex 65

- x65 ★ 1880-1928 mainly mint collection on Lighthouse album pages including 1880 ½d. rose plate 12, 15 (4) and 19 (2 used, one with R.P.S. Certificate), 1d. red plate 174 used with A.P.S Certificate, 1d. (11), 1881 30pa. on 1d. red **surcharge double, one inverted** used with R.P.S. Certificate, 1880 4d., 6d. and 1/-, ½d. on 1d. red plate 215 **surcharge double**, 1881 CC set to 6pi, 1882-86 set to 45pi, 1894-96 set to 45pi., 1902-04 CA set to 45pi., 1904-10 MCA set to 45pi., 1912 and 1921 sets each to 45pi., 1923 MCA 10/- (5 mint and 1 used) and £1 (3 mint) and SPECIMEN set of two, 1924-28 Script set to £1, also £1 used on piece; a lovely selection in chiefly very fine condition. Photo

£4,000-6,000



Ex 66

67

Ex 68

- x66 ★ 1881 HALF-PENNY 18mm. surcharges on Great Britain 1d. red (6) plates 174, 181, 201, 205, 208 and 220, each unused with part original gum (201 and 220 without gum), chiefly fine. S.G. 7, £1,190. Photo
- x67 ★ 1882-86 Crown CA ½pi. emerald-green, large part original gum, fine and very scarce. S.G. 16, £5,000. Photo
- x68 ★ 1904-10 Crown CA set of twelve to 45pi., **four sets**, chiefly fine and large part original gum. S.G. 60-71, £1,400. Photo

£200-400

£1,300-1,600

£250-350

### 1924-28 Watermark Multiple Crown CA



69

70

71

72

- x69 ★ £1 purple and black on red, marginal example from the right of the sheet, lightly mounted and signed A. Diena, fine. S.G. 101, £1,400. Photo
- x70 ★ £1 purple and black on red, large part original gum, fine. S.G. 102, £1,400. Photo
- x71 ★ 1928 £5 black on yellow, lightly mounted mint; very light vertical gum bend, fine and attractive. S.G. 117a, £3,750. Photo
- x72 ★ 1944 1pi. orange **perf.** 13½x12½, very lightly mounted mint. S.G. 154a, £550. Photo

£600-700

£500-600

£800-1,000

£100-150

**DOMINICA**

x73 ⊕

1874-1970 mint collection in a stockbook including 1874 CC perf 12½ 1d. and 1/-, 1877-79 CC perf 14 ½d., 1d., 2½d. and 6d., 1883-86 CA 1d. and 2½d., 1886-90 CA ½d. (5 including a block of four), 1d. (4), 2½d. and 1/-, 1903-07 CC ½d. to 5/- (1/- with green faded), 1907-08 CA 5/-, 1908-20 MCA ½d. to 5/- with some duplication, 1921-22 Script ½d. to 2/6d. with some duplication, 1923-33 ½d. to £1 with some duplication and 1935 onwards complete, the vast majority unmounted. Cat. £3100+

£550-650

**FALKLAND ISLANDS**

Ex 74

x74

1869-98 mint and used collection on pages including Franks in red and black each on piece, 1878-79 no watermark 1d. and 4d. (thinned, with R.P.S. Certificate (1948)), 1882 CA 1d. and 4d. both used and unused, 1885-91 marginal mint strip of three, 1889-91 1d. bisect on piece, 1891 ½d. on half 1d. bisect used (2), 1891-1902 CA set with many shades of each value, 1898 2/6d. and 5/- mint (two of each and 5/- block of four) and used, also overprinted 'SPECIMEN' etc.; mixed condition. Photo

£2,500-3,500

x75

1878-1993 mint and used collection in three large stockbooks housed in a small box with 1878 no watermark values including 1d. (2) unused, 4d. unused and used (2), 1882 CA values both upright and sideways, mint and used, 1891 ½d. on half of 1d. unused and also used tied to piece, 1891-1902 CA set to 1/- mint and used, also some in blocks of four, 1898 2/6d. unused (5) and 5/- unused (4) and used, 1d. Postal Stationery envelope overprinted 'SPECIMEN' and also a used example, 1904-12 set mint and used with duplicate values, 1912 2½d. deep blue unused with B.P.A. Certificate, 1d. vermilion block of sixteen, 1912-20 set to £1 mint and used with duplicates and also the £1 overprinted 'SPECIMEN', War Stamps, 1929-37 set to 5/- mint, 1933 Centenary set to 2/6d. mint, 1935 Silver Jubilee mint and used, 1938 set to £1 (2) and also the set used, with three of the £1, Silver Wedding set mint (2) and used (2), 1952 set of fourteen mint and used, 1960 set to £1 mint and used, 1946-49 Dependencies Thick and Thin Maps sets, then largely complete mint and used to 1993, also a few 1975 Banknotes: £5 (2) and £10 (2); in chiefly fine condition with huge catalogue value, worthy of closer inspection

£6,000-8,000



Falkland Islands - *contd.*



Ex 76

x76 ☉

1891-1956 collection of mainly Specimen sets affixed to album pages including 1898 2/6d. and 5/-, 1904-12 set to 5/-, 1912-20 set to £1, 1929-37 set to £1, 1933 Centenary set to £1, 1935 Silver Jubilee, 1938-50 set to £1, Falkland Dependencies 1944-45 sets of eight each perforated Specimen, 1946-49 Thick Maps set perforated Specimen etc. then issued stamps from 1948 Silver Wedding onward; chiefly fine and lightly mounted on album pages. S.G. £17,000+. Photo

£3,500-4,500



77

x77 ★田

1898 5/- red, marginal block of four from the lower left of the sheet; the lower pair unmounted mint; very fine. S.G. 42, £1,000+. Photo

£400-600



Ex 78

x78 ★

1912-20 MCA set of eleven to £1, large part original gum and fine. S.G. 60-69, £1,000. Photo

£250-350

1928 Provisional Surcharge



79



80

- x79 ★ 2½d. on 2d. purple-brown, marginal example from the foot of the sheet; lightly mounted slightly toned gum, otherwise fine. B.P.A. Certificate (1948). S.G. 115, £1,300. Photo £350-450
- x80 ⊕ 2½d. on 2d. purple-brown, marginal example from the top of the sheet, mounted in the margin only, fine. Signed E. Diena and A. Diena and accompanied by E. Diena Certificate (1982). S.G. 115, £1,300. Photo £450-550

**GAMBIA**



Ex 81

- x81 ⊕ 1869-1966 (Feb.) mint collection in a stockbook including 1869-72 no watermark 4d. (3) and 6d. all without gum, 1874 CC 4d. and 6d. both without gum, 1886-93 CA ½d. (3), 1d. (3), 2d. (5 including a corner pair), 2½d. (2), 3d. (4 including a pair), 4d. (2), 6d. (4) and 1/- (2), 1898-1902 ½d. to 1/-, 1902-05 CA to 3/-, 1904-06 MCA to 2/-, 1906 ½d. on 2/6d. and 1d. on 3/- (2), 1909 MCA to 2/6d. (3) and 3/-, 1912-22 MCA ½d. to 5/-, 1921-22 Script ½d. to 4/- (2), 1922-29 MCA 4d. to 5/- (3) less 7½d. and Script ½d. to 10/- (3) and 1935 onwards complete, the vast majority unmounted. Cat. £6000 approx. Photo £1,000-1,500
- x82 ★ 1869-1980 duplicated mint collection in a blue 'Merton' album including a range of four margin imperforate stamps with 1869-72 4d. (3) and 6d. (2, one with B.P.A. Certificate, 1990), 1874 4d. (3) and 6d. (2), 1880-81 watermark sideways ½d., 2d. (no gum), watermark upright set to 6d., 1886-93 set duplicated to 1/- (6), 1898-1902 set to 1/-, 1902-05 set to 3/- (3), 1904-06 set to 2/- (3), 1906 surcharge sets (3), 1909 set to 3/- (4), 1912-22 set to 5/- (2), 1922-29 MCA to 5/- and Script 10/- (2), 2½d with watermark inverted, 1938-46 set to 10/- (2), 1953-59 set to £1 (4) etc; mixed condition £800-1,000

**GIBRALTAR**



Ex 83

x83

1886-1908 mint and used collection written up on pages including 1886 Overprints on stamps of Bermuda (two mint sets), 2½d. with blue-black overprint (toned) and used selection with values up to 4d., 1889 Issue mainly mint with varieties including 25c. on 2d. with small 'r' ( in marginal pair and block of six which also shows **short foot to '5'** vertically), broken 'N' (in lower pane corner pair and lower pane strip of three with plate number), 25c. on 2½d. small 'r', broken 'N' etc., 1903 CA set to £1 mint with extras including 8/- (3), 1904-08 MCA set to £1 with extra 2/- (2) and 4/-, some chalk surfaced papers, 1906-11 MCA set to 8/- mint with extra shades including two extra of 6d., 2/-, 4/- and 8/- plus a 4/- with parcel post c.d.s.; a chiefly fine selection. Photo

£2,000-4,000



Ex 84

x84

1886-1932 mint and used selection on two Hagner pages including 1886 GIBRALTAR overprints on stamps of Bermuda set of seven both mint and used (mint 1/- with A.P.S. Certificate), the remainder mint including 1904 MCA set to 2/-, 1906-11 set of nine, 1921-27 values to 8/-, 1925-32 issued stamps to £1 and £5 overprinted 'SPECIMEN' (£5, colour diffused), otherwise chiefly fine and fresh. S.G. £4,000+. Photo

£800-1,200

x85

1886-1962 mint and used accumulation on stockcards (104) prepared for individual retail sale, mostly better sets and single stamps with a nice section of early issues, many definitive sets including perforation varieties, blocks of four etc; chiefly good to fine. Prepared for retail sale at \$10,000+

£2,000-4,000





Ex 86

x86 ⊕

1886-1971 mint collection in a stockbook including 1886 (Jan.) ½d. to 1/-, 1886-87 ½d. to 1/- with additional ½d., 1d. and 2d., 1899 5c. on ½d. to 75c. on 1/- with additional 25c. on 2d. showing broken “N”, 1889-96 5c. to 5p. (2), 1898 ½d. to 1/- with additional 6d. (2), 1903 CA ½d. to £1 with additional 4/- (3, one with plate number and one lightly gum toned), 1904-08 MCA ½d. (2), 1d., 2d. (5), 2½d. (3, one with plate number), 6d. (2), 4/- (3) and £1, 1906-11 MCA ½d., 1d. (2), 2d. (2), 2½d., 1/-, 2/- (2), 4/- (2) and 8/-, 1912-24 MCA to 1/- (5), 2/-, 4/-, 8/- and £1 (2), 1921-27 Script ½d. to 8/- with additional 2/- (3), 1925-32 1/- (2), 2/-, 2/6d. (2), 5/- (2), 10/- (2), £1 and £5 (R.P.S. Certificate, 1991), 1931-33 ½d. to 3d., 1938-51 ½d. to £1 with many perforation changes including 1½d. carmine perf 13½ (gum bend), 2d. grey perf 13½ watermark sideways (some slightly trimmed perfs as usual), 3d. perf 14 and 6d. perf 14, 1949 Wedding £1 (2) and 1953-69 complete, virtually all unmounted. Cat. £12,000+. Photo

£2,500-3,500



Ex 87

x87 ⊕

1903-24 selection each overprinted ‘SPECIMEN’ including 1903 CA set to £1 with additional values, 2d. (2), 1/- (2), 2/- (4, one faded), 4/- (2), 8/- (4) and £1 (7), 1906-11 MCA 2/- and 4/-, 1921-27 Script set of eleven to 8/- plus a couple of duplicates and 1925-32 Script 5/- to £1 (additional 10/- and £1); the majority lightly mounted, some with heavier hinge remainders. Photo

£800-1,000

Gibraltar - *contd.*

1912-24 Multiple Crown CA



Ex 88



Ex 89



90



91

- |        |  |          |
|--------|--|----------|
| x88 ★  | Set of ten to £1, <b>three sets</b> , chiefly very fine and large part original gum. S.G. 76-85, £975. Photo                                   | £200-300 |
| x89 ★  | Set of ten to £1, <b>four sets</b> , chiefly very fine and large part original gum. S.G. 76-85, £1,300. Photo                                  | £270-350 |
| x90 ⊕田 | £1 black and red, unmounted mint block of four from the foot of the sheet; tiny mark in the margin, otherwise very fine. S.G. 85, £560+. Photo | £200-250 |
| <hr/>  |  |          |
| x91 ★  | 1925-32 Script £5 violet and black, very lightly mounted; well centred and with very fresh colours. S.G. 108, £1,600. Photo                    | £500-600 |

**GILBERT AND ELLICE ISLANDS**

- x92 ⊕ 1911-70 mint collection in a stockbook including 1911 (Jan.) ½d. to 1/-, 1912-24 MCA ½d. to 2/-, 5/- (2) and £1, 1922-27 Script 10/- (2) and 1935 onwards complete (with additional 1946 Victory pair perforated “SPECIMEN”) less 1970 UN and Christmas Sketches, the vast majority unmounted, some duplication (a few gum toned/toned). Cat. £1500+ £300-400



93

- x93 ⊕ 1924 £1 purple and black on red, unmounted mint. Signed Calves. S.G. 24, £550. Photo £200-300

**GOLD COAST**



94



Ex 95



Ex 96

- x94 ★ 1888-91 2½d. on 8d. grey-brown horizontal pair, each with variety **surcharge double, one inverted**, unused with part original gum; some light hinge reinforcement to foot, fine. S.G. 47d, £1,100. Photo £300-600
- x95 1894 20/- dull mauve and black on red used **watermark inverted** with R.P.S. Certificate (2014) and 1898-1902 set of ten to 10/- with part original gum, chiefly fine. S.G. 25w, 26-34. £520. Photo £130-160
- x96 ★ 1913-21 MCA ½d. to 20/- set of twelve, large part original gum, with at least four examples of each value, some showing distinct shades, chiefly very fine. S.G. 70-84, £900+. Photo £200-400



Ex 97

- x97 ⊕ 1913-54 selection of mainly Specimen sets from Post Office archives including 1913-24 mixed set of eighteen but including 15/-, 20/- and £2, 1928 set of ten, 1935 Silver Jubilee, 1937 Coronation, 1938-41 set of thirteen, 1946 Victory, 1948 set of twelve and Postage Due set of four; also issued stamps including 1948 Silver Wedding and 1952-54 set to 10/-, chiefly fine and lightly hinged to album pages. S.G. £2,200+. Photo £400-600



Gold Coast - *contd.*



98

x98 ⊕田 1921-24 Script 15/- dull purple and green, Die II, unmounted mint block of four from the upper left of the sheet with plate number '11', from the 1925 third printing as indicated by the Jubilee lines, very fine; light diagonal bend in upper margin just touching the upper pair. S.G. 100a, £560. Photo

£400-600

## HONG KONG



Ex 99

x99 ⊕ 1862-1982 mint collection in a stockbook including 1862-63 no wmk 2c., 8c., 12c. and 18c., all regummed, 1865-71 CC 2c., 4c., 8c., 12c. (3), 30c. vermilion, 48c. and 96c., all regummed, 1880 CC 2c. and 5c. (2), all regummed, 1882-96 CA 2c. (3), 4c. (4), 5c. (3), 10c. dull mauve, 10c. green, 10c. purple on red (2) and 30c. (3), 1885 (Sept.) 20c. on 30c., 1891 7c. on 10c., 14c. on 30c. (3), 20c. on 30c. grey-green and \$1 on 96c., with Chinese characters 20c. on 30c. grey-green, 50c. on 48c. (2) and \$1 on 96c. (2), 1891 Jubilee 2c. (B.P.A. Certificate, 2004), 1898 with Chinese characters \$1 on 96c. grey-black, 1900-01 2c. to 30c. (2 sets), 1903 CA to \$1, 1904-08 MCA to \$3, 1907-11 1c. to \$2 less 10c., 1912-21 MCA 50c. to \$10, 1921-37 Script 1c. to \$5 with additional \$3 and \$5, 1938-52 1c. to \$10 complete with additional \$2 red-orange and green, \$2 reddish violet and scarlet (2), \$5 dull lilac and scarlet (2), \$5 violet and green (3, one yellowish), \$10 lilac and blue (4), 1941-69 complete less 1965 ICY and Postal Fiscal 1891 \$5 on \$10, the vast majority unmounted. Cat. £25,000+. Photo

£5,000-7,000

Postal Fiscal Stamps



100

x100 ★ 1897 \$1 on \$2 dull bluish green, variety both Chinese handstamps omitted, well centred and with large part original gum. A fine example of this rare Postal Fiscal variety. S.G. F11a, £2,000. Photo

£600-800

INDIA

Unissued Essays



101



102

x101 © 1925 Official Trial Surcharge 'ONE RUPEE' on 10r. green and scarlet, without gum as prepared; very well centred and fine, one of only twelve produced. S.G. O94 var. Photo

£500-700

x102 © 1954 Postage Stamp Centenary 1r. unissued essay on ungummed watermarked paper, depicting 1854 ½a. and flag of India, very scarce with only a few examples known; a couple of light tone spots on the reverse not affecting appearance. Photo

£400-600

PROVENANCE:  
'Medina', 2013

IRAQ



103

x103 ★ 1921 1r. on 10pi. red-brown, Tougra as type B, scarce mint example, very lightly mounted. S.G. 15. Photo

£300-500

**IRELAND**



Ex 104

x104 ★ 1922 (17 Oct.-Nov.) Thom overprints 2/6d. to 10/-, Type 3, lightly mounted mint; 5/- with minor gum bend. S.G. 44-46, £1,400. Photo £300-400

**ITALIAN EAST AFRICA**

**British Occupation**



Ex 105

x105 ★ 1941 surcharge set of nine to 10l. on 5l., chiefly fine and very lightly mounted, some unmounted and signed A. Diena. 10l. on 5l. with Bolaffi Certificate (1978). Photo £800-1,000



*The Royal Philatelic Society London*

We are pleased to receive proposals for membership of the Society which is through election.  
 If you are interested in membership, please contact us at [secretary@rpsl.org.uk](mailto:secretary@rpsl.org.uk)  
 If you have no proposer or seconder, please contact us for further information.

Tel: 00 44 (0)20 7486 1044 | [www.rpsl.org.uk](http://www.rpsl.org.uk)

The world's oldest and most prestigious philatelic society, established 1869, with over 2,000 members in more than 70 countries.  
 \*\*\*

Extensive premises in London's West End house the Society's superlative library, plus Museum and Archive, and provide first-class meeting facilities.  
 \*\*\*

The Society's Online Catalogue provides access to over three-quarters of a million philatelic indexes to members world-wide.  
 \*\*\*

A fascinating programme of displays and meetings throughout the year, supplemented by regional meetings and gatherings at major international events.  
 \*\*\*

The Society publishes ten times a year its own journal, *The London Philatelist*, containing articles of outstanding philatelic research, in addition to publishing major philatelic works.  
 \*\*\*

We are honoured to have Her Majesty Queen Elizabeth II as our Royal Patron



**JAMAICA**



106

x106 ★

1920 1/- orange-yellow and red-orange, **frame inverted**, a very fine mint example of this important and popular rarity, fresh colours and lightly mounted; fewer than twenty examples known to exist, striking and scarce. R.P.S. Certificate (1979), S.G. 85a, £40,000. Photo

*Note: The “Inverted Frame” was discovered by a local collector at the small post office in Manchioneal, a village on the coast of Jamaica in March 1922. It is believed that only one sheet of sixty has the error, with half of the sheet going to Manchioneal*

£15,000-25,000

**KENYA, UGANDA AND TANGANYIKA**



Ex 107



108

x107

1890-1922 mint and used selection on a Hagner page including 1890-95 8a. grey used, 1897-1903 20r. and 50r. overprinted ‘SPECIMEN’, 1903-04 20r. overprinted ‘SPECIMEN’, 1912-21 set to 20r. (both), 50r. and 100r. overprinted ‘SPECIMEN’, most without gum, 1935-37 £1 mint etc; chiefly fine. Photo

£700-800

x108 ★田

1919 4c. on 6c. scarlet, block of four each with **surcharge inverted**, part original gum; slight hinge reinforcement at left, fine. B.P.A. Certificate (2002). S.G. 64c, £1,400. Photo

£400-600

Kenya, Uganda and Tanganyika - *contd.*

1922-27 Issue



109



110



Ex 111



112

- x109 ★

£3 purple and yellow, very lightly mounted mint, fresh colours and fine. S.G. 97, £1,800.  
Photo

£400-600
- x110 ★

£5 black and blue, well-centred example, very lightly mounted mint; fine. B.P.A. Certificate (1960). S.G. 99, £3,250. Photo

£800-1,000
- x111 ○

£25 black and red (2) each fiscally used (both with defects) and £50 black and brown fiscally cancelled with Nairobi Registration of Deeds oval stamp and fine, scarce. S.G. 102-103, £1,650. Photo

£300-500
- x112 ☉

£75 purple and grey overprinted 'SPECIMEN', well-centred example with lightly toned, unmounted mint gum; fine and scarce. S.G.104s, £4,500. Photo

£1,800-2,200



Ex 113

- x113 ☉

1922-54 selection of mainly Specimen sets from Post Office archives including 1922-27 set of thirty to £100, 1935-37 set to £1, 1935 Silver Jubilee, 1937 Coronation, 1938-54 set of thirteen to £1, 1946 Victory and then Issued stamps from 1948 Silver Wedding and including 1954 set of fourteen to £1, also 1928 and 1935 Postage Dues overprinted and perforated 'SPECIMEN' respectively; chiefly fine and fresh, lightly mounted to album pages. S.G. £22,000+. Photo

£5,000-7,000



Ex 114

x114 ★

1935-58 mint collection on leaves, mainly consisting of the 1938-54 issue with all perforations, shades and a wide range of printings with 2/- (15), 3/- (10), 5/- (15), 10/- (12), £1 (9), 50c. perf. 13x11¼ with rope not joined to sail, also a few later issues, 1935 Postage Dues etc. mixed condition; chiefly fine. Photo

£600-800

**MALAYSIA**



Ex 115

x115 ©

A large range of sets mainly overprinted or perforated 'SPECIMEN' (some sets of issued stamps in addition) affixed to pages from across Labuan and Malaya including Kedah with 1912 set to \$5, 1921-36 set to \$5, Labuan with 1892 set to 40c., 1894 set to 24c., 1897-1906 set to 24c. etc., Straits Settlements with sets from 1893-1941 and values to \$500 along with Postage Dues etc., Negri-Sembilan 1935-41 set to \$5 etc., Penang with 1949-52 issued stamps to \$5, Perlis 1951-55 issued stamps to \$5 etc. a fine selection predominantly from Postal Archive Collections. Photo

£2,500-5,000



Malaysia - *contd.*

### Straits Settlements



Ex 116

x116 ★ 1867 (1 Sept.) surcharged on stamps of India 1½c. on ½a., 2c. on 1a., 3c. on 1a., 4c. on 1a. (marginal), 6c. on 2a., 8c. on 2a., 12c. on 4a., 24c. on 8a. and 32c. on 2a., all unused, the 3c., 4c. and 6c. with part gum; the 8c. with tiny thin and the 32c. a trifle soiled, the others chiefly fine. S.G. 1-9, £5,000+. Photo

£600-800

### 1867-72 Issue



117

x117 © 3c., 6c., 12c. and 24c. handstamped 'SPECIMEN' (Type D5) in red (12c.) or blue, and 12c. handstamped 'SPECIMEN' (Type SS4), all with part gum; the 6c. with perfs trimmed at left and the 24c. with straight-edge at right. Photo

£800-1,000



118

x118 © 1867-72 2c., 4c. (thin in wing-margin), 6c., 12c., 32c. and 96c., each handstamped 'CANCELLED' (Type D4), all with traces of gum, fine for these, scarce. Photo

£800-1,000



Ex 119

x119 ★ 2c., 4c., 8c., 12c., 24c., 30c., 32c. and 96c., all unused with small or large part original gum; the 4c. and 6c. each with thin spot and the 32c. a trifle soiled. S.G. 11-19, £2,500+. Photo

£400-600



Ex 120

x120 ★

1880-99 mint collection on Hagner pages (a few used scattered throughout) including 1885 5c. Types 13 and 14, 1880-81 1c. on 6c. (2), 10c. on 12c. (5, one used) and 10c. on 30c. (4, including a vertical strip of three), 1883-91 2c. (37 including blocks of twenty-four with plate number and block of nine), 1884 "8" on 8c. on 12c. (3, one used), plenty of other sets and single stamps, strips of three, blocks of four, six and larger; a chiefly fine lot and a good basis of the later Q.V. issues upon which to build. S.G. 41-109 range, £28,000+. Photo

£5,000-7,000



Ex 121

x121 ©

1882 CA 10c. (lower left corner thinned) and 1883-91 CA 2c., 4c., 5c., 6c., 12c. (surface fault) and 96c., each handstamped 'SPECIMEN' (Type SS4), all with part original gum, fine. Photo

£800-1,200



Ex 122

123

x122 ©

1885-1941 collection of Specimen stamps including 1885 3c. on 32c., 1891 30c. on 32c. handstamped with Type SS4, 1892 1c. on 8c. handstamped with Type SS4, 1892-94 1c. on 8c. and 3c. on 32c. (3 of each) and 1899 4c. on 5c. (including a vertical strip of three), 1902-03 CA 1c. to \$5, 1903-04 CA 1c. to 8c., 1906-12 MCA 3c. to \$5, 1912-23 1c. to \$25, 1921-33 Script set to \$5, 1935 Jubilee, 1936-37 1c. to \$5, 1937 Coronation etc; condition chiefly fine. Photo

£2,000-4,000

x123 ★

1894 3c. on 32c. rose, variety **surchage omitted**, a lightly mounted mint example, fresh and fine; offered with normal for comparison. S.G 94a, £4,500. Photo

£1,500-2,000

Malaya, Straits Settlements - *contd.*



Ex 124

- x124 ★ 1902-41 mint collection on Hagner pages including 1902-03 1c. to \$5 with 1c. and 50c. shades, 1903-04 CA 1c. to 8c., 1904-10 MCA 1c. to \$5 including those on chalk surfaced paper, 1906-07 1c. to \$1, 1906-12 3c. to \$5, 1912-23 MCA 1c. to \$5 with all listed shades and papers, 1921-33 Script 1c. to \$5, 1922 Exhibition, 1936-37 1c. to \$5 and 1937-42 1c. to \$5; chiefly fine. S.G. £7,000+. Photo £1,500-3,000
- x125 1902-41 mainly mint collection on Hagner pages with some duplication including 1902-03 CA 1c. to \$5 with additional \$1 marginal block of twelve, 1903-04 1c. to 8c. (4 sets), 1904-10 MCA 1c. to \$5, 1906-07 1c. to \$1 with additional 4c. on 12c. pair with one showing no stop after "CENTS", 4c. on 12c. and 8c. lower right corner block of six and 4c. on 18c. complete setting of twenty-five, 1906-12 1c. to \$5 (2), 1912-23 MCA 1c. to \$5 with \$5 (4), 1921-33 Script 1c. to \$5, 1936-37 1c. to \$5, 1918 Indenture bearing \$1, \$5 (3) and \$25 (2) etc; a few faults but chiefly fine £400-600

1906-12 Multiple Crown CA



126



127



128

- x126 © £25 purple and blue on blue, overprinted 'SPECIMEN', part original gum. S.G. 168s, £750. Photo £150-250
- x127 ★ \$25 purple and blue on blue, large part original gum, fine example of this scarce high value. S.G. 168, £3,750. Photo £800-1,000
- x128 © \$500 purple and orange, overprinted 'SPECIMEN', fine and large part original gum. S.G. 169s, £4,750. Photo £1,400-1,800



**1912-23 Multiple Crown CA**



129



130



131

- x129 ©      \$25 purple and blue on blue, overprinted 'SPECIMEN', large part original gum. S.G. 213s, £650. Photo £150-200
- x130 ©      \$100 black and carmine, overprinted 'SPECIMEN' in red, part original gum; light horizontal gum bend. S.G. 214s, £1,500. Photo £300-600
- x131 ©      \$500 purple and orange-brown, overprinted 'SPECIMEN' in black, large part original gum; a few toned perforations. S.G. 215s, £5,500. Photo £800-1,000

**1921-33 Multiple Script CA**



132



133



134

- x132 ©      \$100 black and carmine on blue, overprinted 'SPECIMEN' in black, large part original gum; fine. S.G. 240cs, £1,000. Photo £200-400
- x133 ★      \$100 black and carmine on blue, lightly mounted mint and fresh colour; fine and scarce. S.G. 240c, £10,000. Photo £2,000-4,000
- x134 ©      \$500 purple and orange-brown, overprinted 'SPECIMEN' in black, very lightly mounted mint; well centred and with fresh colours, fine. S.G. 240ds, £5,000. Photo £1,000-2,000

**Federated Malay States**



Ex 135

- x135 ★      1922-34 Script set of thirty to \$5 green and red on green, chiefly large part original gum and fine; \$5 green and blue with some toned perforations. S.G. 52-81, £750. Photo £160-180

Malaysia - *contd.*

**Johore**



Ex 136

137

- x136 ★ 1904-10 set of fifteen to \$10, part to large part original gum and 1922-41 Script set of twenty-three to \$10, part to large part original gum, chiefly fine with a few slightly toned. S.G. 61-75 and 103-25, £1,150. Photo £200-400
- x137 ☉ 1904-10 \$100 green and scarlet, unmounted mint, fine. S.G. 77, £650. Photo £180-220

**Kelantan**



Ex 138



Ex 139



Ex 140

- x138 ☉ 1911-15 MCA set of thirteen and 1921-28 Script set of thirteen, each overprinted 'SPECIMEN', chiefly fine and large part original gum. S.G. 1s-23s, £675. Photo £150-200
- x139 ★ 1922 Malaya-Borneo Exhibition set of nine, part to large part original gum. S.G. 30-38, £425. Photo £100-150
- x140 ★ 1922 Malaya-Borneo Exhibition set of nine, lightly mounted mint, fine. S.G. 30-38, £425. Photo £100-150



Ex 141

- x141 ★ 1937-40 Script set of fifteen to \$5, lightly mounted and fine. S.G. 40-54, £1,600. Photo £350-450

Selangor



142

x142 ④

1941 prepared for use but not issued \$5 green and red on emerald block of six from the foot of the sheet, unmounted mint, usual streaky gum; fine. See footnote after S.G. 87, £1,080. Photo

£300-600

Revenue Stamps



143

x143 ★

1936-39 Script Negri Sembilan \$100 black and red on blue, Perak \$100 black and red on blue and Selangor \$100 black and red on blue, small part to part original gum. Barefoot 6, 34 and 103. Photo

£300-600



*The Royal Philatelic Society London*

We are pleased to receive proposals for membership of the Society which is through election.

If you are interested in membership, please contact us at [secretary@rpsl.org.uk](mailto:secretary@rpsl.org.uk)

If you have no proposer or seconder, please contact us for further information.

Tel: 00 44 (0)20 7486 1044 | [www.rpsl.org.uk](http://www.rpsl.org.uk)

The world's oldest and most prestigious philatelic society, established 1869, with over 2,000 members in more than 70 countries.

\*\*\*

Extensive premises in London's West End house the Society's superlative library, plus Museum and Archive, and provide first-class meeting facilities.

\*\*\*

The Society's Online Catalogue provides access to over three-quarters of a million philatelic indexes to members world-wide.

\*\*\*

A fascinating programme of displays and meetings throughout the year, supplemented by regional meetings and gatherings at major international events.

\*\*\*

The Society publishes ten times a year its own journal, *The London Philatelist*, containing articles of outstanding philatelic research, in addition to publishing major philatelic works.

\*\*\*

We are honoured to have Her Majesty Queen Elizabeth II as our Royal Patron



**MAURITIUS**



Ex 144

x144 ⊕

1848-1921 mint and used selection (34) in mixed condition on a Hagner page including 1848 Early Impression 1d. orange-vermilion unused (pinhole), cut into at bottom and left and close at top and right, 2d. deep blue used with very close to average margins, signed Richter, 1848 Intermediate Impression 1d. bright vermilion used with concentric circle cancellation and average margins, 1d. dull vermilion with good to large margins used with concentric circles, 1d. red with close to average margins on left and right side and cut into at top and bottom with clear part concentric circles cancel, 2d. blue with close to large margins and cancelled by '11' in double ring stamp, 2d. deep blue used with good to large margins (soiled), 2d. blue with 'PENOE' for 'PENCE' error with close to clear margins and used by '1' in double ring cancellation (soiled and toned), Worn Impression 1d. red-brown unused (soiled at top), 1d. red-brown used by distinct '14' double ring cancellation and with good to huge margins, 1d. red on bluish paper used with small thin, 2d. blue on bluish paper with huge margins and cancelled with '16' double ring stamp, Latest Impression 1d. red-brown used strip of three with clear margins three sides, cut into at foot, cancelled by three double ring stamps also 1859 Lapirot 2d. blue used (4), 1859 Sherwin 2d. deep blue with clear to average margins and cancelled by 'PAID' circular stamp, 1859 Dardenne 1d. used (2, one cut into) and used pair (cut into), 2d. blue used (2) and used on piece with **heavy retouch on neck**, 1862 1/- deep green unused, 1886 Surcharge 2c. on 38c. bright purple with **surcharge inverted** unused and 2c. on 38c. bright purple with **surcharge double** and 1924 50r. dull purple and green unused; very mixed condition with faults and suspected repairs in places, viewing strongly recommended. S.G. 7-222 group, £120,000+. Photo

£5,000-10,000

**1859 Lapirot Issue**



Ex 145

146

x145 ○

A complete plate reconstruction of all twelve positions affixed to card, some with minor faults and cut-into; most examples with close margins or cut-into, some with four margins. S.G. 36-39 group. Photo

£500-700

x146 ○

2d. blue, early impression, position 7 in a milky shade, large to very large margins and used by a barred oval cancellation; tiny thin spot beneath hinge, fine appearance. Signed A. Diena and with his Certificate (1973), S.G. 37, £3,250. Photo

£1,000-1,200



Ex 147

x147

2d. in black and the unissued 1d. in black on die sunk card, the 'Royal' reprints of the defaced plates (3x4) made in 1911, presented to the officers of the Royal Philatelic Society by King George V; one of only twenty sets made, fine and scarce. S.G. 40 var. Photo

£800-1,200



Mauritius, 1859 Sherwin Issue - *contd.*



148

- x148 ○ 2d. deep blue, horizontal pair from positions 7-8 on the plate, clear to good margins and each lightly cancelled with concentric circles obliterator, very fine and particularly scarce as a multiple. S.G. 40, £16,000+. Photo £7,000-9,000

PROVENANCE:  
Ferrary, 1921

- x149 1859-1920 selection of covers and a front (31) including 1859 Lapirot 2d. pair on cover to Bordeaux with R.P.S. Certificate which states "*Heavily ironed and cannot be certified as originating on the lettersheet*", Britannia 6d. single franking to England (lifted and replaced), a few philatelic frankings with bisects including overprint double varieties, Registered postcards, 1860's Soldier Concessionary rate cover and a front; a useful range of frankings in mixed condition £1,000-2,000



150

- x150 ★ 1865 CC 9d. yellow-green, exceptional; **strip of six** from the upper right of the sheet with Current Number 143 in upper margin, full streaky original gum; one stamp with minor crease, a fine and attractive piece. S.G. 66, £1,100+. Photo £400-600
- x151 1876-1954 chiefly mint balance of collection with 1879-80 set to 2r.50c., 1883-94 set to 50c., blocks of four including 1883 16c. on 17c., 1883-94 25c. used with inverted watermark single, 1897-90 unused set plus 13c. and 38c. used, specimens, Express stamps, Postage Dues including 1933-54 specimen set etc. chiefly fine £500-700
- x152 ★ 1878 2r.50c. on 5/- bright mauve, full pane of sixty with sheet margins, inscription and plate number; very fresh with only two stamps mounted, small spot on reverse of two stamps and small part of lower right margin missing, a fine and impressive multiple. S.G. 91, £1,500+. Photo £300-500







Mauritius - *contd.*

1879-80 Watermark Crown CC



153

x153 ★<sup>®</sup>

4c. orange, superb mint block of forty-two from the upper left of the sheet, mostly unmounted; a few tone spots, otherwise fine and a scarce multiple. S.G. 93, £2,700+. Photo

£600-800



1891 Surcharge Issues



154



155

- x154 ★ TWO CENTS on 17c. rose, with **surcharge inverted**, part original gum. Signed A. Diena. S.G. 119a, £550. Photo £150-250
- x155 ★ TWO CENTS on 38c. on 9d. pale violet, horizontal pair from the left of the sheet with **surcharge double, one inverted**, large part original gum; fine. S.G. 120c, £380+. Photo £100-150



Ex 156



Ex 158

- x156 © 1900-05 set of eighteen to 5r. purple and carmine on red, each overprinted 'SPECIMEN', chiefly fine and part to large part original gum. S.G. 138s-155s, £425. Photo £120-140
- x157 ★ 1902-10 mint range on album pages with 1902 12c. on 18c. block of four, 1902 overprinted 4c. to 2r. 50c. plus blocks of 4c. and 6c., 12c. on 36c. Jubilee block, 1904-07 1c. to 1r., 1910 1c. to 10r. with blocks of 1c. to 15c. and 50c. etc; chiefly fine. S.G. £850+ £200-300
- x158 © 1910 set of fifteen to 10r. green and red on green, each overprinted 'SPECIMEN', fine and chiefly large part original gum. S.G. 181s-195s, £375. Photo £100-200



Ex 159

Ex 160

- x159 © 1913-22 set of ten to 10r. (both 1r. and 10r. values) each overprinted 'SPECIMEN', fine and part to large part original gum. S.G. 196s-204s, £420. Photo £100-150
- x160 ★ 1913-22 MCA set to 10r. mint, the complete set of twenty listed by Stanley Gibbons with all papers and Dies (no 1921 10r. emerald on olive back) mint, including the rare 1919 10r. blue-green on olive-back along with blocks of four of 5c., 12c., 25c. (3) and 1r., also 5c. to 10r. various values overprinted 'SPECIMEN'; chiefly fine. Photo £300-500



Mauritius - *contd.*



Ex 161

- x161 ★ 1921-26 1c. to 50r. set of seventeen (the 50r. lower marginal) and blocks of four of 1c. (2), 2c. (both), 3c., 4c. (all three), 6c. (both), 8c., 10c. (both), 12c. (both), 15c. (both) and 20c. (both), chiefly fine and fresh. S.G. 205-222, £1,200+. Photo

£300-500
- x162 ★ 1921-34 Script set to 10r. (28) with shades and Dies, very fine mint along with blocks of four of the low values to 50c., 1r. both Dies, 1925 set mint with blocks and specimen set; chiefly fine. S.G. 223-244

£200-300



Ex 163

- x163 © 1922-48 unmounted 'SPECIMEN' group including 1922 10r., 1935 Jubilee set, 1937 Coronation, 1938-49 set of twelve, 1946 Victory set, 1948 Stamp Centenary and 1933-54 Postage Dues set of five, chiefly very fine and fresh. S.G. £1,100+. Photo

£200-400
- x164 1935 Silver Jubilee mint and used collection on pages including perforated 'SPECIMEN' set, set in corner plate number pairs, set in used blocks of four, set in blocks of four on cover, 5c. with dot to left of chapel mint, 12c. with diagonal line by turret used, 12c. with dot to left of chapel used, 20c. with diagonal line by turret used etc. Chiefly fine. S.G. 245-248 group

£300-500
- x165 ★ 1937-50 mint collection on pages including Coronation set perforated 'SPECIMEN', 1938-49 Definitive set to 10r. (2) with various printings, shades, perforations and varieties including 3c. with sliced 's', 5c. with thin open 'c' and in a used block of four, 10c. with sliced 's' in a mint corner block of fifteen, 25c. 'ij' for 'u' in a mint pair, 1r. battered 'A', 12c. perf 15x14 mint block of four, Victory and Centenary sets perforated 'SPECIMEN' etc; chiefly fine

£300-500



166



167

- x166 ★ 1938 (2 Mar.) 25c. brown-purple, with ‘17’ for ‘U’ flaw, very lightly mounted marginal example from the right of the sheet. S.G. 259ba, £300. Photo £100-200
- x167 ★ 1938 (2 Mar.) 1r. grey-brown, with **battered ‘A’**, very lightly mounted mint and fine. S.G. 260ba, £900. Photo £200-300

**Express Delivery Stamps**



168



169



170

- x168 ★ 1903-04 15c. on 15c., surcharged in two operations in red, variety “A” inverted, part original gum, scarce. S.G. E2a, £1,700. Photo £400-600  
 PROVENANCE:  
 William Frazer, 2004
- x169 ★ 1903-04 15c. on 15c., surcharged in one operation in red, error **surcharge inverted**, part original gum, scarce. S.G. E3a, £1,300. Photo £300-400  
 PROVENANCE:  
 William Frazer, 2004
- x170 ★ 1903-04 15c. on 15c., surcharged in one operation in red, error **surcharge double, both inverted**, large part original gum; small patch of gum missing upper right corner, a rare stamp. S.G. E3b, £1,900. Photo £300-400  
 PROVENANCE:  
 William Frazer, 2004

Mauritius, Express Delivery Stamps - *contd.*



171



172

- x171 ★ 1903-04 15c. on 15c., surcharged in one operation in red, variety **imperforate between**, mint vertical pair, slight surface adhesion and toned gum; *an extremely rare variety with only four examples known to exist in private hands, and two further examples in institutions.* S.G. E3c, £8,000. Photo £2,000-3,000
- PROVENANCE:  
Dale-Lichtenstein, 1969
- x172 ○ 1903-04 smaller figures of value 15c. on 15c., error **surcharge inverted**, fine used on piece tied by neat c.d.s. of 1904, scarce. S.G. E4a, £1,900. Photo £500-700
- PROVENANCE:  
William Frazer, 2004



173



174

- x173 ○ 1903-04 15c. on 15c., smaller figures of value, error **surcharge double**, fine used on piece, tied by c.d.s. of 1904, very scarce. R.P.S. Certificate (2012), S.G. E4b, £3,500. Photo £800-1,200
- x174 ○ 1903-04 15c. on 15c., smaller figures of value, error "c" omitted from value, fine used with part c.d.s. at foot, small spot on reverse; rare. R.P.S. Certificate (1979). S.G. E4d, £2,500. Photo £700-900





175



176

- x175 ★ 1904 grey-green, error **surchage inverted**, fine and fresh with large part original gum. S.G. E6a, £1,000. Photo £200-300
- x176 ○ 1904 grey-green, error **surchage inverted**, fine used on piece tied by part oval stamp and c.d.s for January 1907. S.G. E6a, £900. Photo £180-220



177



178

- x177 ★ 1904 grey-green, error **surchage double**, one 'LNIAND', closely spaced impressions, fine mint and scarce. R.P.S. Certificate (1968). S.G. E6c, £850. Photo £200-300
- PROVENANCE:  
William Frazer, 2004
- x178 ★ 1904 grey-green, error **surchage double**, one 'LNIAND', widely spaced impressions, fine mounted mint and scarce. S.G. E6c, £850. Photo £250-350
- PROVENANCE:  
William Frazer, 2004

### MONTSERRAT

- x179 © 1903-1956 selection of mainly Specimen sets on album pages from Post Office archives including 1903 set of ten ( 5/- no gum), 1908-14 set of ten, 1916 set to 5/- (short set of eight), 1922-29 set of twenty-one, 1932 set of ten, 1935 Silver Jubilee set, 1937 Coronation set, 1938 set of twelve, 1946 Victory set etc; chiefly fine and lightly hinged to the pages. S.G. £2,000+ £400-600

### MOROCCO AGENCIES

- x180 ★ 1898-1957 mint selection on large stock cards including Gibraltar stamps overprinted, British currency, Spanish currency and French currency issues; some in complete sets with shades and some duplication, couple with overprint varieties, chiefly fine. S.G. £2,000+. £400-500

**NATAL**



181

x181 © 1902 £1.10, £5, £10 and £20 each overprinted 'SPECIMEN', large part original gum; chiefly fine. S.G. 143s-145bs, £1,500+. Photo £300-600



Ex 182

x182 ★ 1908-09 set of seven to £1 purple and black on red and additional 2/6d. to £1, chiefly lightly mounted mint; fine. S.G. 165-171, £1,160. Photo £300-600

**NAURU**



Ex 183

x183 1916-66 selection of Specimen and Issued stamps including 1916-23 Issued set of ten to 9d. and 1/- overprinted 'SPECIMEN', De la Rue 2/6d. and 5/- overprinted 'SPECIMEN' (both toned gum) and Waterlow 10/- overprinted 'SPECIMEN', 1924-48 Issued set to 10/- used, also other issued sets to 1954-65 set of fifteen; chiefly good to fine. S.G. £2,000+. Photo £400-600

**NEW BRUNSWICK**

1851-60



184



185



186

- x184 ○ 3d. dull red on blued paper (3, one **bisected diagonally**) on piece, tied by two strikes of oval of black bars, good to large margins, fine and attractive. Caffaz Certificate (2008). S.G. 2, 2a, £3,700. Photo

£800-1,200
- x185 ○ 1/- reddish mauve on blued paper, used example with close to good margins, just touching on one side, cancelled with crisp blue oval of bars; corner crease though not affecting appearance, fine. Vincent Green Certificate (1992), S.G. 5, £4,500; Unitrade 3, C\$4,000. Photo

£600-800
- x186 ★ 2c. deep-orange, **vertical pair, imperforate horizontally**, unused without gum as usual; fine. S.G. 12a, £475, Unitrade 7a C\$950. Photo

£200-400

**1860 5c. Charles Connell**



187



188



189

- x187 ⊙Ⓢ 5c. brown, imperforate pair from the lower right of the sheet, each stamp overprinted 'SPECIMEN' vertically in red, unused without gum as produced. S.G. 13 var., Unitrade 5P C\$500. Photo

£100-200
- x188 ⊙Ⓢ⊞ 5c. brown, imperforate block of four on India paper, each overprinted 'SPECIMEN' vertically in red, the left hand vertical pair Type B and the right vertical pair Type C, fine with average to large margins; close at top. Unitrade 5P iv and v, C\$1,000+. Photo

£200-300
- x189 ★ 5c. brown, unused example of this rare stamp that was prepared for use but never issued, small part gum, centred to right; perforation faults as almost always found, very scarce nonetheless. R.P.S. Certificate (1954). S.G. 13 £10,000; Unitrade 5 C\$8,000. Photo

£4,000-6,000



## NEWFOUNDLAND



Ex 190

x190 ★

1857-1937 mainly mint collection on leaves including 1857-64 1d., 1862-64 1d. to 1/-, 1865-70 yellowish paper 5c. (used), 13c., white paper 2c., 10c., 12c., 1868-73 to 6c. (3c. blue used), mint or unused, 1876-79 roulettes used, 1887 to 10c. (5, incl. a block of four), 1890 3c. shades (5), 1894 to 12c. (5, incl. a block of four), 1896-98 to 3c. (both), 1897 Discovery set, 1897 1c. on 3c. (3), mint, 1897-1918 to 5c. mint with 4c. imperf. strip of three, 1910 perf. 12 to 15c., perf. 12 x 14 to 5c., 1911 to 15c., 1911-16 Coronation, mint, with 15c. imperf. block of four, 1920 surcharges mint, 1921 Halifax 35c. mint and used on (Nov. 22) 'Wilson' cover, 1919 Caribou set, 1923-24 to 24c., publicity issues 1928-29 to 30c., 1929-31 to 20c. and 1931 to 30c. with a study of printings in blocks of four to 30c., 1931 Airmails without and with wmk. sets, 1932 to 30c. set (2), 1932-38 to 30c., 1933 Airmails and Balbo \$4.50 on 75c., 1933 Gilbert, and 1937 Coronation sets, all mint, also New Brunswick with 1851-60 3d. used, 5c. Connell proof overprinted 'SPECIMEN' vertically in red, 1860-63 to 17c., Nova Scotia with 1851-60 3d. used, Prince Edward Island 1862-69 to 9d., etc., chiefly good to fine. Photo

£2,000-4,000



Ex 191

x191 ★

1857-1947 mint collection in a stock book including 1857-64 1d. and 4d. without gum, 1862-64 1d. (2), 2d. (3), 4d., 5d. (4), 6d., 6½d., 8d. and 1/-, 1865-70 2c., 5c., 10c. (3), 12c. (4), 13c. and 24c. (3), 1868 1c., 1868-73 3c. (both) and 6c. (2), 1880-82 rouletted 2c., 3c. and 5c., 1880-82 1c., 2c. (4) and 5c., 1887 2c. (4), 3c. (4), 5c. (8) and 10c., 1894 6c. (6 including a marginal block of four with part imprint), 1896-98 ¼c., 1897 Discovery 1c. to 60c. with some duplication, 1897 1c. (Type 36) on 3c. (4), 1897-1918 ½c. to 5c., 1910 1c. to 15c. with some duplication plus 12c. imperf pair, 1911 recess 6c. to 15c. with duplication, 1911-16 Coronation 1c. to 15c., 1919 Contingent 1c. to 30c., 1919 (June) Air \$1 on 15c., 1920 (Sept.) 3c. on 15c. (both), 1923 (Nov.) Air 35c. vertical pair showing both settings, 1923-24 1c. to 24c. plus 4c., 6c. and 11c. imperforate pairs (11c. vertical), 1928-29 Publicity 1c. to 30c., 1931 1c. to 30c., 1932 3c. and 10c. imperf pairs, 1932 Air \$1.50 on \$1, 1932-38 1c., 2c. (2), 4c., 5c. (2) and 48c. (vertical) imperf pairs, 1933 Air 5c. to 75c., 1933 Air Balbo \$4.50 on 75c., 1933 1c. to 32c. plus 1c. imperf block of four, 2c. and 4c. (vertical) imperf pairs and 1938 7c. imperf pair, the vast majority unmounted. Cat. £14,500+. Photo

£3,500-4,500

x192

1865-1945 collection housed in a red Grafton stamp album including a range of mint, unused and used early issues with 1897 to 60c. mint, 1897-1918 set mint, 1910 to 15c. (2) mint, 1911 to 15c. mint, 1911-16 Coronation to 15c. (2) mint, 1919 Caribou to 36c. mint, 1923-24 to 24c. mint, 1928-29 to 30c. mint, 1929-31 to 20c. (2) mint, 1931 both watermark sets mint, 1931 to 30c. (2) mint, 1933 Air sets (2) mint, 1933 Balbo flight \$4.50 on 75c. mint, 1933 to 32c. (3) mint etc., mixed condition but plenty good to fine, worthy of closer inspection

£1,000-2,000



Ex 193

- x193 ©

1897 400th Anniversary set of fourteen, each overprinted 'SPECIMEN' in red, large part original gum; some apparently unmounted. S.G. 66-79 var., Unitrade 61-74 \$C1,500. Photo

£300-400
- x194 ★

1911 recess printed set of six to 15c., 1911 Coronation set of eleven to 15c. lake and 1928-29 Publicity issue part set to 30c. (no 9c., 12c., 14c., and 28c.); chiefly fine and part to large part original gum. S.G. 111-127, 164-178 group, £650+

£150-250



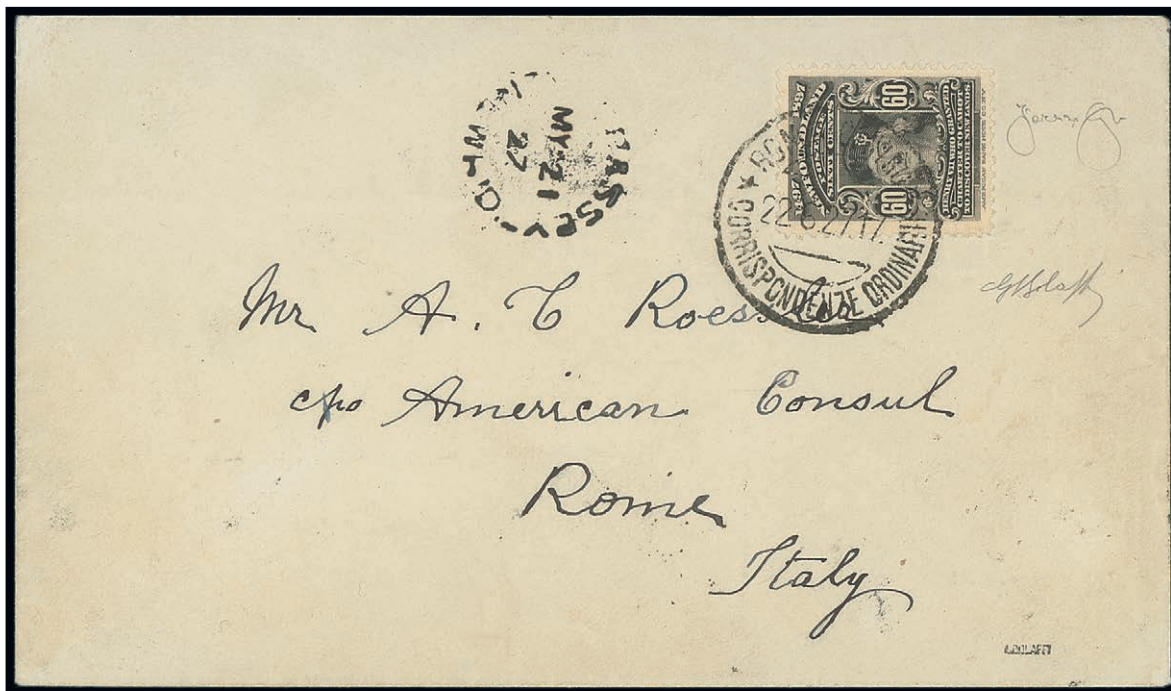
195

- x195 © ★

1919 "Hawker" 3c. brown, initialled "j.a.r." on reverse, large part original gum, of only two-hundred examples overprinted, just eighty-seven remained unused; lightly soiled at lower left, otherwise very fine. B.P.A. Certificate (1996). S.G. 142, £22,000. Photo

£10,000-12,000

Newfoundland, Airmails - *contd.*



196

x196 ④✉

1927 De Pinedo Supplementary mail, cover to Rome, Italy franked with ordinary 60c., tied by 22 May c.d.s of Rome, and Trespasey 21 May departure stamp alongside; 22 May Roma Centro arrival stamp on reverse. *This mail was taken in both St. John's and Trespasey with most of the covers cancelled on departure.* Signed G. Bolaffi and accompanied by his 1962 Certificate. S.G £13,000. Photo

£4,000-6,000



197

x197 ④

1937 8c. scarlet, horizontal pair imperforate between, unmounted mint and fine. S.G. 260b, £1,200. Photo

£300-600

Revenue Stamps



Ex 198

x198 ○

1936-39 Caribou set of ten, 5c. to \$100, each fiscally used, the \$100 also with green pen stroke; rarely offered as a set, the high values particularly scarce, fine. Barefoot 26-35. Photo

£400-600



**NEW GUINEA**

- x199 ★ 1925-1935 mint collection on album pages including 1925-27 set of thirteen to £1, 1931 set to £1, 1932 set to £1, 1931 (8 Jun.) and (2 Aug.) Air sets, 1932 Air set, 1935 Air set £2 and £5 and 1939 Air set to £1 also includes Official stamps etc; chiefly fine. S.G. £4,500+ £800-1,200

**NEW ZEALAND**

- x200 ★ 1882-1959 mint collection on pages including 1898 set to 2/-, 1915-30 set to 1/-, 1926 set of three to 3/- pale mauve, 1931 Health set of two, 1935-36 set to 3/-, Official sets, Postage Dues, Miniature sheets and largely complete with full sets to 1959; chiefly fine mounted mint condition £800-1,000



201

- x201 ★ 1898 2d. lake, vertical pair **imperforate between**, part original gum, very fine. Signed Mowbray. S.G. 248ba, £1,400. Photo £350-450

**NIGERIA**



Ex 202



203

- x202 1914-51 mint selection on stockcards including 1914-29 with extra shades and duplicates of each value (including six of the 10/- and three of the £1), 1936 set of twelve and also perforated Specimen set, 1938-51 set, with shades and perforation varieties and perforated Specimen set etc. chiefly fine, S.G. £2,300+. Photo £600-800
- x203 ○ 1916 1/- grey-green and grey, fiscally used by purple handstamp, also manuscript in lower right corner, very scarce with only a few examples recorded. Photo £100-200

## NORTHERN NIGERIA



Ex 204

x204 ⊕

1900 CA ½d. to 10/- (green a little faded), 1902 CA ½d. to 10/- with some duplication (one 1/- and the 10/- with green a little faded), 1905-07 MCA to 2/6d., 1910-11 ½d. to 10/- with some duplication and 1912 ½d. to £1 less 5/-; most unmounted. Cat. £1300+. Photo

£150-250

## NORTH BORNEO



Ex 205

x205 ★

1883-1963 mint collection on large stockcards including 1883 8c. on 2c. brown with B.P.A. Certificate (2002), 1886 ½c. to 2c. (no 1c.), 1886 Surcharges, 1890 2c. on 25c. indigo and 8c. on 25c. indigo, 1891-92 6c. on 10c. blue (both), 1892 Surcharges, 1894 set of nine, 1899 '4 cents' Surcharged set of twelve, 1916 Cross set, 1918 Red Cross set, 1922 Exhibition set, 1925-28 set of eighteen etc; chiefly fine. Photo

£3,000-6,000



Ex 206

x206 ⊙

1894-1945 collection of Specimen stamps including 1894 High Values (two sets) with additional \$2, \$5 and \$10 (2) handstamped, 1895 Surcharge set (2), 1897-1902 set (2), 1897 Corrected Inscriptions strips of five, 1899 4 Cents set (2) plus five unissued values, 1901-05 British Protectorate values to 50c., 1909-23 sets (2), 1911 High Values (2), 1922 Exhibition set with additional 8c. with **stop after** "EXHIBITION", 1931, 1939 and 1947 sets; a few small imperfections in places but generally good to fine. S.G. £4,000+. Photo

£500-700

Postage Due



207



Ex 208

- x207 ◻田 1912 British Protectorate Postage Due 6c., black and bistre-brown, block of four from the top of the sheet, each with **Type D1 overprint inverted**, cancelled to order, very fine and scarce. B.P.A. Certificate (1985). S.G. D42a, £560+. Photo £200-400
- x208 ★ 1916 (May) Cross 1c. to 25c., set of thirteen, including 4c., with cross in carmine (matt ink), part to large part original gum (8c. toned). S.G. 202-213. Photo £300-600



Ex 209



210

- x209 ★ 1918 (Oct.) Red Cross set of nineteen to \$10+ 4c., including both 10c. and 25c., chiefly fine and large part original gum. S.G. 235-252. Photo £200-400
- x210 ★ 1925-28 5c. black and yellow-brown vertical pair, **imperforate between**; small tear at right of lower stamp not affecting appearance. Ceremuga Certificate (2015). S.G. 281a, £1,200. Photo £200-300



**NOVA SCOTIA**

1851-60



211

x211 ◻

3d. bright blue., strip of four with generally good to large margins, neatly cancelled by three strikes of oval grid; tear between second and third stamp mainly in the margin but cutting into 'ST' of second stamp, still an attractive multiple. S.G. 3, £600. Photo

£150-300



212

x212 ☒

3d. deep blue (3, **one bisected**) on slightly truncated cover to Liverpool tied by two strikes of the oval grid cancellation and a SHIP LETTER LIVERPOOL tombstone stamp in red; third stamp affected by vertical filing fold, otherwise a fine and scarce bisect cover. B.P.A. Certificate (1968). S.G. 3, 3a, £2,800. Photo

£800-1,000

**NYASALAND**



Ex 213

- x213 ★ 1891-1964 mint collection on album pages including 1891 B.C.A set to 5/- with some duplication, 1895 set of eight (along with a rather dubious looking £1) also 1895 set to 5/- overprinted 'SPECIMEN', 1897 10/- imperforate proof, 1897 3/- to £1 overprinted 'SPECIMEN', 1903-04 set to £1 and also Specimen set, 1908 set with values to 10/-, 1913 set with values to £1, 1921 set to 10/- along with 4/- showing **break in scroll** and also the Specimen set to 10/-, 1934 set to 1/- and Specimen set, 1935 Jubilee set perforated 'SPECIMEN' etc.; a lovely lot in chiefly good to fine condition, S.G. £6,000+. Photo £1,500-3,000



214

- x214 1891-95 £10 brown of Rhodesia overprinted 'B.C.A.', unused without gum; centred to top, fine and scarce. Raybaudi Certificate (1992). S.G. 17, £4,500. Photo £1,000-2,000

**1895 Issue**



215



216

- x215 ★ £10 black and orange-vermilion, a well centred and attractive unused example of this scarce high value; regummed, signed A. Diena. B.P.A. Certificate (2008). S.G. 30, £8,000. Photo £2,000-4,000
- x216 ○ £10 black and orange-vermilion, a used example cancelled with clear 'TSHIROMO/5 SP 95/BCA' double-ring datestamp, fine and scarce. S.G. 30, £5,500. Photo £2,000-4,000

Nyasaland - *contd.*

1896 Issue



Ex 217

218

- x217 © 1d. to £1 set of nine, each overprinted 'SPECIMEN', chiefly fine; £1 with trimmed perfs to left. S.G. 32s-40s, £450. Photo £100-200
- x218 © £25 black and green, overprinted 'SPECIMEN' in black, fresh with part original gum; slight gum crease to foot. S.G. 42s, £450. Photo £150-250

1897-1900 Issue



219

- x219 ○ £10 black and yellow, two fiscally used examples, one with Blantyre double-ring datestamp in violet, the other similarly cancelled at Kakonga in black. A fine and attractive pair of this scarce high value. S.G. 52. Photo £300-400



220



Ex 221



222



Ex 223



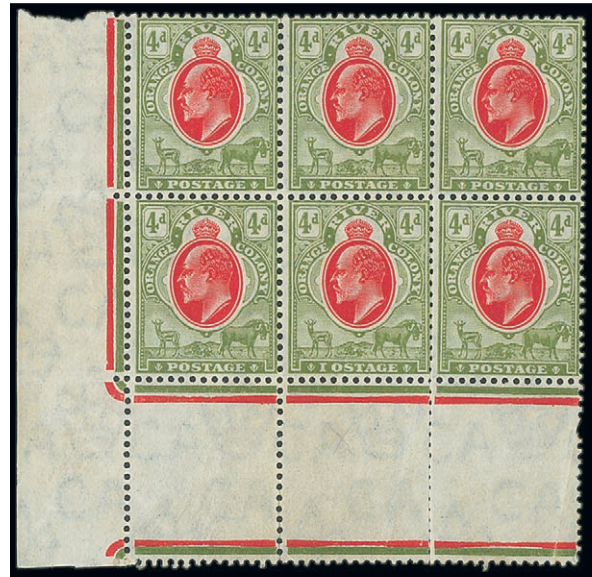
- x220 © 1903-04 CA £10 grey and blue overprinted 'SPECIMEN', fine with large part original gum. S.G. 67s, £500. Photo £200-400
- x221 ★ 1913-21 CA three part sets, 1/- to £1, chiefly fine and large part original gum. S.G. 93-98, £1,100+. Photo £250-350
- x222 ★ 1919 CA £10 purple and royal blue, large part original gum. A fine example with deep colour and crisp impression. S.G. 99e, £4,000. Photo £2,000-4,000
- x223 ○ 1913-21 CA £10 purple and royal blue, five examples fiscally used with various Blantyre oval datestamps; minor soiling in places and one with a thin in one corner. S.G. 99e, £750. Photo £200-300



**ORANGE FREE STATE**



Ex 224



225

- x224 ★      1868-1909 mint selection on stockcards including 1882-86 values to £2, 1903-04 set (2), 1905-09 set and Postal Fiscals; chiefly fine and large part original gum. S.G. £1,300+. Photo £300-500
- x225 ★ ②      1903-04 CA 4d. scarlet and sage-green block of six from the lower left of the sheet with 'POSTAGE' variety in lower middle stamp; some split perfs, a fine and attractive positional piece displaying the scarce variety. Very lightly mounted, five of the stamps remaining unmounted mint. S.G. 144a, £1,390+. Photo £400-600

**PITCAIRN ISLANDS**



Ex 226

- x226 ©      1940-63 selection of Specimen and Issued sets including 1940-51 set of eight and 1946 Victory set of two each perforated 'SPECIMEN', Issued stamps comprising 1948 Silver Wedding set, U.P.U. set and 1957-63 set of twelve; chiefly fine, scarce as Specimens. S.G. £1,900+. Photo £400-600

**PRINCE EDWARD ISLAND**

1862-69 Issue



227

x227 ★

1863 Perf. 11½-12 1d. yellow-orange horizontal pair, variety **imperforate between**, lightly mounted mint; only five pairs believed to exist, fine. S.G. 9a, £550, Unitrade C\$500. Photo

£250-350



228

x228 ★<sup>ⓑ</sup>

1863 3d. blue, variety **imperforate horizontally**, the two right horizontal pairs in a full bottom margin block of twelve, lightly mounted on two stamps; very fine and scarce. S.G. 14a. Photo

£600-800



*The Royal Philatelic Society London*

We are pleased to receive proposals for membership of the Society which is through election.  
 If you are interested in membership, please contact us at [secretary@rpsl.org.uk](mailto:secretary@rpsl.org.uk)  
 If you have no proposer or seconder, please contact us for further information.

Tel: 00 44 (0)20 7486 1044 | [www.rpsl.org.uk](http://www.rpsl.org.uk)

The world's oldest and most prestigious philatelic society, established 1869, with over 2,000 members in more than 70 countries.  
 \*\*\*

Extensive premises in London's West End house the Society's superlative library, plus Museum and Archive, and provide first-class meeting facilities.  
 \*\*\*

The Society's Online Catalogue provides access to over three-quarters of a million philatelic indexes to members world-wide.  
 \*\*\*

A fascinating programme of displays and meetings throughout the year, supplemented by regional meetings and gatherings at major international events.  
 \*\*\*

The Society publishes ten times a year its own journal, *The London Philatelist*, containing articles of outstanding philatelic research, in addition to publishing major philatelic works.  
 \*\*\*

We are honoured to have Her Majesty Queen Elizabeth II as our Royal Patron





229

x229 ⊕ ⊗

1869 4d. black, variety **imperforate bottom margin**, strip of five in a full bottom sheet margin block of ten, unmounted mint; fine and scarce, the largest know multiple of this variety. S.G. 16 var, Unitrade 9iii. Photo

£500-700



Ex 230

x230 ★

1862-72 balance of mint collection on written up pages including 1862-69 1d. to 9d., eight imperforate pairs and an imperforate block of four, other blocks of four and six, lots of perforation, plate and shade varieties; chiefly fine to very fine with a large percentage unmounted, an attractive and clean lot. Photo

£2,000-4,000



**RHODESIA**

x231 ⊕ 1892-1962 mint collection in two stockbooks including 1892-93 1d., 6d. (both), 1/-, 2/-, 2/6d. (both), 5/-, 10/-, £1 and £10 (many regummed including high values), 1892 surcharges, 1892-94 ½d. (2), 2d. (2), 3d., 4d. (2), 8d., 3/- and 4/-, 1895 2d. and 4d. (2), 1896-97 Die I 3/- and 4/-, and Die II 1d., 2d., 4d. (2), 6d. and 2/- to 10/-, 1896 ½d. to 5/-, 1897 1d., 4d., 6d. (2), 8d. and £1, 1898-1908 to 1/-, 2/6d. (2), 3/-, 5/-, 7/6d., 10/- (2), £1 and £2 (2), 1905 Falls set, 1909-12 to 3/-, 1910-13 Double Heads ½d. (2), 1d. (2), 2d., 2½d. (7), 3d., 4d. (9 including two pairs), 5d. (2), 6d. (4 including a vertical pair), 8d. (3), 10d., 1/-, 2/-, 2/6d. (2), 3/-, 5/- (2), 7/6d. (2) and 10/- and 1913-24 Admirals to £1, then a range of modern issues to 1966 plus Rhodesia and Nyasaland including 1954-56 ½d. to £1 and 1959-62 ½d. to £1; the vast majority unmounted £2,800-3,200

**1892-93 Issue**



Ex 232

x232 ★ Set of eleven to £5 sage-green, chiefly fine and part to large part original gum; the 1/- with light pink ink marks to face, otherwise fine. S.G. 1-12, £3,000+. Photo £600-800

**1898-1908 Issue**



233



234



235

x233 ★ 1906 2/6d. bluish grey, variety **imperforate between**, vertical pair, part original gum; a fine example of this rarity. S.G. 85a, £1,000. Photo £500-600

x234 ⊕田 £1 greyish red-purple, block of four each overprinted 'SPECIMEN' in black, unmounted mint; a few split perfs to left. S.G. 90s. Photo £200-400

x235 ★ 1901 £10 lilac, an unused example without gum, fine. R.P.S. Certificate (2018). S.G. 93, £3,500. Photo £600-800

Collection



Ex 236

x236 ©

1909-19 selection of stamps overprinted or perforated 'specimen' from Post Office archives comprising 1909-12 set to £1, 1909-11 Surcharge set of four, 1910-13 Double Head set of eighteen to £1 and 1913-19 Admiral set of nineteen to £1; chiefly fine and fresh; lightly mounted to album pages. S.G. 100s-249s, £7,100+. Photo

£1,500-2,500

1910-13 Double Head Issue



Ex 237

x237

A mint and used selection on pages and on stockcards including perf. 14 2d. mint (12) and used (36), 3d. purple and ochre block of four with long gash, marginal single with long gash and part imprint, magenta and yellow-ochre block of four mint, dull claret and ochre RSC "D" mint singles (2), deep rose-lilac and ochre RSC "J" with large part original gum (Ex. Gibbs), 5d. purple-brown and ochre error of colour unused, 6d. bright chestnut and mauve mint (2), red-brown and mauve cancelled to order with Gwelo c.d.s, 10d. scarlet and reddish mauve mint (8), scarlet and maroon RSC "A" mint (5) and carmine and deep purple (2), 1/- brownish black and turquoise-green RSC "D", 10/- blue-green and orange mint, perf. 15 values to 1/- used etc. Mixed condition with much fine. Photo

£1,000-2,000



Ex 238

x238 ★

Perforated 14 set of nineteen to £1, chiefly fine unused condition; some with minor faults: ½d, 1d., 10/- and £1 no gum, 2/- with diagonal bend and small mark above King's head. S.G. 119-166 group. Photo

£600-800

Rhodesia, 1910-13 Double Head Issue - *contd.*



Ex 239

- x239 ○ Perforated 14 set of seventeen to £1 used (no 7/6d.), each with distinct part c.d.s., chiefly fine. S.G. 119-160 and 163-166 group. Photo £500-700



240



241

- x240 ★ Perforated 14, 5d. purple-brown and ochre **error of colour**, large part original gum; light gum bend, otherwise fine. R.P.S. Certificate (2010). S.G. 141ab, £650. Photo £200-400

- x241 ○ Perforated 14, £1 rose-scarlet and bluish black, a well centred used example with distinct part 'SALISBURY' double-ring cancellation, fine. S.G. 166. Photo £200-400



242

- x242 ★ Perforated 14, £1 crimson and slate-black, a well-centred example with large part original gum; fine. S.G. 166a, £2,000. Photo £500-700

1913-19 Admiral Issue



Ex 243

- x243 ◎ ½d. to £1 set of eighteen (no 1½d.) each overprinted 'SPECIMEN', chiefly large part original gum and fine. S.G. 186s-249s group, £2,600+. Photo £650-750



**ST. HELENA**



Ex 244

x244 ☉

1863-1970 mint collection in a stockbook including 1863 (July) 4d. (regummed, cut-into and foot and creased), 1864-80 CC 1d. (2) and 1/- (2), 1890-97 ½d. to 10d., 1903 CC ½d. to 2/-, 1908-11 ½d. (3), 4d. (2), 6d. (2) and 10/- (a little faded), 1912-16 ½d. to 3/- with some additional values including 2/- with plate number, 1922 Script ½d. (2), 1d. (2) and 2½d. (3), 1922-27 MCA 4d. to £1 and Script ½d. to 15/- with some additional values to 5/- (2), 1934 Centenary ½d. to 10/- (2), 1938-44 ½d. to 10/- and then complete to 1966; the vast majority unmounted. Cat. £5000+. Photo

£1,400-1,800



245

x245 ★田

1894 Crown CA 1/- yellow-green, block of four from the right of the sheet (vertically split and rejoined) the upper two stamps with variety **surchage double**, part original gum, fine and very scarce as a multiple. B.P.A. Certificate (1998), S.G. 45a, £9,500. Photo

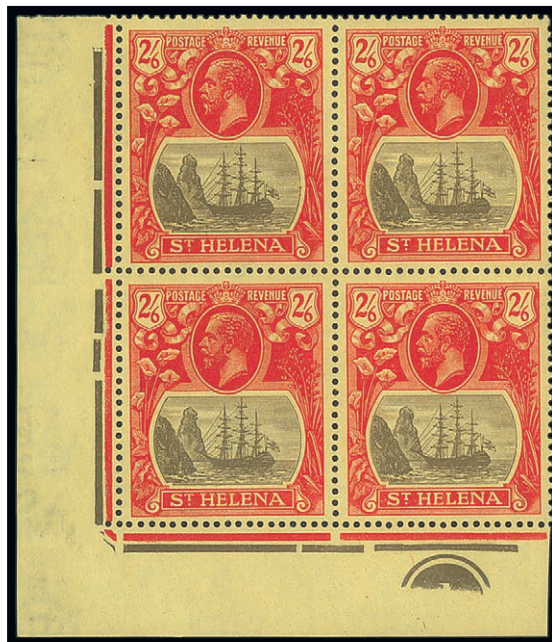
£4,000-6,000

St. Helena - *contd.*

1922-37 Issue



246



Ex 247

x246 ★田

Multiple Crown CA 5/- grey and green on yellow, block of four from the foot of the sheet, upper left stamp with variety "torn flag", fine and large part original gum. S.G. 95b, £1,100. Photo

£400-600

x247 ★田

Script 2/- and 2/6d. each in lower right hand plate number blocks of four, both with lower left stamp showing cleft rock variety, large part original gum. S.G. 108, 108c and 109, 109c, £1,000+. Photo

£400-600



248

x248 ⊕田

Script 7/6d. grey-brown and yellow-orange, block of four, unmounted mint; very slight gum discolouration, fine. S.G. 111, £600. Photo

£250-350



1961 Tristan Relief Fund



249

x249

Complete set of four unmounted mint marginal examples, a very fine and scarce set. *The stamps were withdrawn from sale on 19th October 1961, 434 complete sets having been sold.* Each stamp with individual R.P.S. Certificate (1994). S.G. 172-175, £8,000. Photo

£3,000-4,000

# SPINK LIVE

Spink Live is now running on a new and improved bidding platform  
 Accessible online through [www.spink.com](http://www.spink.com) and also available iOS and Android devices

Bidding on 'Spink Live' remains free of charge

MY ACCOUNT

- Login
- Consign An Item
- Watched Lots
- My Bids

- Medals
- Stamps
- Watches
- Whiskies & Spirits
- Wines

Lot 9 - SEAL, 6 songs, including all

Lot 4 - RAMBO CRAWFORD & JOE SAMPLE, 4

LOT 2010 - CURRENT B

Slide to bid €

CURRENT HISTORY

Click to Login / Register
Tick your Interests
Scroll the Lots
Slide to Bid

Download on the App Store

GET IT ON Google Play

For any enquiries or further assistance please contact:  
 Tel: +44 (0)20 7563 4112 | Email: [spinklive@spink.com](mailto:spinklive@spink.com)

**SPINK**

WHERE HISTORY IS VALUED



**ST. KITTS-NEVIS**

**St. Christopher**



250

x250 ★ 1886 'ONE PENNY' on 6d., variety **surcharge inverted**, an unused example without gum; tiny red mark above 'E' of 'PENNY'; fine and very scarce. Brandon Certificate (1998). S.G. 24a, £9,000. Photo

£2,000-4,000



Ex 251

x251 ★ 1870-88 attractive unused selection including 1870-82 perf 12½ 1d. rose (2), 1d. with watermark sideways, 1d. magenta (3), 6d. (2), perf 14 1d, 2½d. (2), 4d. (2), 4d. with watermark inverted (2), and 6d., 1882-90 values to 1/- including specimen set, 1884 4d. on 6d. (2), 1885 ½d. on 1/- unsevered pair (2) and right half surcharge inverted, 1886 4d. on 6d. with no stop after 'd' in pair with normal (with B.P.A. Certificate) etc., mostly fine to very fine. S.G. 1-28 group, £5,000+. Photo

£1,000-2,000

**St. Kitts-Nevis**

x252 © 1903-54 selection of stamps mainly overprinted or perforated 'SPECIMEN' from Post Office archives including 1903 set of ten, 1916 War Tax and 1918 War Stamp, 1920-22 set of thirteen, 1923 Tercentenary set of thirteen, 1935 Jubilee set, 1937 Coronation and 1938-50 set of ten; Issued stamps from 1938 10/- and £1 and including 1952 set to \$4.80 and 1954-63 set of fifteen, chiefly fine. S.G. £2,000+

£400-600



Ex 253

x253 ★ 1923 Tercentenary set to £1, large part original gum and chiefly fine to very fine. £1 with B.P.A. Certificate (2001). S.G. 48-63, £1,200. Photo

£300-500

**ST. LUCIA**

**Collection**



Ex 254

x254 ©

1864-1973 collection of mainly Specimen sets (two of each in many cases) on pages starting with 1864 Issued set to 1/ brown-orange, 1886-87 and 1891-98 sets (faults), 1902-03 set to 1/-, 1904-10 set to 5/-, 1912-21 set to 5/-, 1936 set to 10/-, 1938 set to £1, 1946 Victory set and from 1948 the Issued stamps largely complete to 1973; mixed condition, the majority fine. Photo

£1,000-2,000

x255 ★

1881-1968 mint collection in a stockbook including 1881 ½d. and 2½d., 1882-84 6d., 1883-86 Die I ½d. (2), 1d. (2), 2½d., 4d. and 6d., 1891-98 ½d. to 10/- (2), 1891-92 Die I ½d. on half 6d. and Die II ½d. on 3d. (2), 1902-03 CA ½d. to 1/- (2 sets, one overprinted "SPECIMEN"), 1904-10 MCA to 5/- green and red on yellow, 1912-21 MCA ½d. to 5/- (2) less 6d., 1921-20 Script ½d. to 5/-, 1936 ½d. to 10/-, 1938-48 ½d. to £1 with perf changes, 1949-50 1c. to \$4.80, 1953-63 1c. to \$2.50 and 1964-69 1c. to \$2.50; the vast majority unmounted. Cat. £2400 approx.

£500-700



256

x256 ○

1950 12c. claret perf. 14½x14, upper marginal block of four used on piece, cancelled by central strike of G.P.O. CASTRIE/17 OC 52/ST. LUCIA, fine and very scarce as a multiple. S.G. 153a, £2,200. Photo

£1,000-2,000

PROVENANCE:  
The 'Libra' Collection of King George VI

**ST. VINCENT**

- x257            1861-1953 largely complete mint and used collection with a huge amount of duplication including a huge range of first issues both mint and used, 1880 5/- rose-red mint and used (3), 1880 1d. on half 6d. green, ½d. on half 6d. green unsevered pair, 1881 4d. on 1/- bright vermilion with B.P.A. Cert., also includes some Specimens, a selection of town and village cancellations etc. mixed condition, chiefly good to fine; huge catalogue value £5,000-7,000
- x258            1861-1972 selection of mint and Specimen stamps from Post Office archives including 1862-68 1d. rose-red, 4d. deep blue and 1871 watermark Star 6d. green, 1869 4d. yellow, 1/- indigo and 1/- brown, 1880 1/- vermilion and 5/- rose-red, 1885-93 Specimen set of three, 1899 Specimen set of nine, 1902 Specimen set of nine, 1904-11 Specimen set of three to £1, 1907-08, 1909 and 1909-11 sets, 1935 Jubilee, 1937 Coronation, 1938-48 set to £1 and 1946 Victory each overprinted Specimen, Issued stamps including 1948 Silver Wedding, 1949 New Currency set etc; chiefly fine and lightly mounted to the pages £600-800
- x259 ★        1882-1970 mint collection in a stockbook including 1882-83 1d. and 2½d. on 1d., 1885 1d. on 2½d. on 6d., 1899 ½d. to 5/-, 1902 CA to 1/-, 2/- (2) and 5/-, 1904-11 MCA to £1, 1907-11 Arms, 1913-17 MCA to £1, 1921-32 Script ½d. to £1 (2), 1938-47 ½d. to £1 with duplication, 1949-52 1c. to \$4.80, 1955-63 1c. to \$2.50, 1963-67 1c. to \$5 and 1970 ½c. to \$10; the vast majority unmounted. Cat. £1600+ £280-320

**SAMOA**



Ex 260

- x260            1914-32 selection of mint and used 'G.R.I.' overprints comprising 1914 ½d. on 3pfg. variety **comma after 't'** tied to piece, 1914 5/- on 5m. carmine and greenish-black of German Samoa variety **broken stop after 't'** tied to small piece with Peter Holcombe Certificate (1992), 1914 ½d. to 9d., 3/- and 5/- all used on pieces each signed Bothe BPP, 1914 1 SHILLINGS. on 1m. unused with large part original gum with B.P.A. Certificate (2014); New Guinea 1914 2/- on 2m blue., 5mm spacing, large part original gum with B.P.A. Certificate (2014), Togo 1914 1m. carmine tied to piece by Lome c.d.s. with B.P.A. Certificate (2014) and Samoa 1932 Fiscals 2/6d. to £5 mounted mint, Holcombe Certificates for £2 and £5; a fine and attractive group. Photo £4,000-6,000



**SARAWAK**

x261 ©

1869-1965 selection of Specimen sets and issued stamps from Post Office archives including Specimens: 1918 set of twelve, 1928-29 set of fifteen, 1932 set of fifteen, 1934-41 set of twenty-six to \$10, 1946 Centenary set of four, 1947 set of fifteen and Issued stamps: 1948 Silver Wedding, 1945 BMA set of twenty, 1950 set of fifteen etc; chiefly fine and lightly mounted to album pages. S.G. £3,800+

£800-1,000



Ex 262

x262 ⊕ ⊗

1934-41 1c. to \$10 complete set of twenty values in matching imperforate imprint blocks of twelve, all pristine and unmounted mint. A highly attractive group, extremely rare in positional multiples. Footnote after S.G. 106-125, £7,800. Photo

£3,000-4,000



Ex 263

x263 ⊕

1941-49 complete unmounted mint collection including 1945 BMA set of twenty-six to \$10, 1948 Silver Wedding pair and 1950-52 2c. to \$5 set of fifteen; fresh and fine. S.G. 107a-170, £800+. Photo

£350-450

**SEYCHELLES**

- x264 ☉ 1890-1970 mint collection in a stockbook including 1890 Die I 4c., 8c. (2), 10c., 13c. (3), 48c. and 96c. (2), Die II 2c. (3), 4c., 8c., 13c. and 16c. (2), 1893 45c. on 48c. block of four and single and 90c. on 96c. (2), 1893 (Nov.) 3c. to 45c., 1897-1900 2c. to 2r.25, 1891 3c. on 10c. and 3c. on 36c. both variety **surcharge double** (both gum toned), 1902 (June) surcharges, 1903 CA 2c. to 2r.25 less 18c., 1906 MCA 2c. to 2r.25, 1921-32 Script 2c. to 5r. with some duplication, 1938-49 2c. to 5r. with some duplication, 1952 1c. to 10r., 1954-61 2c. to 10r., 1962-68 5c. to 10r. and 1969 5c. to 15r. plus B.I.O.T 1968-70 complete; the vast majority unmounted. Cat. £4500 approx. £1,000-1,500



Ex 265

- x265 ★ 1937-52 mint collection on completed Stanley Gibbons pages featuring 1938-49 set of twenty-four unmounted mint, with additional printings for 3c., 6c. and 18c. and 1952 set of fifteen to 2r. S.G. £650+. Photo £200-300

**SIERRA LEONE**



Ex 267

266

- x266 ★ 1897 Fiscal overprinted 'POSTAGE AND REVENUE' (Type 14) 2½d. (Type 8) on 2/- dull lilac, part original gum; scarce. B.P.A. Certificate (1991). S.G. 67, £2,000. Photo £600-800
- x267 ★ 1907-12 Multiple Crown CA set of thirteen to £1, **three sets**, chiefly fine and part to large part original gum. S.G. 99-111, £1,275. Photo £250-350



Ex 268

- x268 ★ 1912-21 Multiple Crown CA 3d. and 1/- to £1 part set of six, **three sets**, chiefly fine with part to large part original gum; a couple of low values with creases. S.G. 116b, 124-128, £1,300+. Photo £250-350

**SOUTH AFRICA**

- x269 ★ 1910-76 a mostly mint collection on printed hingeless pages including 1913-24 ½d. to £1 pale olive-green and red, 1925 Air set, 1927-30 pictorial set, 1930-44 2/6d. (2 shades), 1933-48 6d. “Molehill” flaw, 5/- (2 shades), 10/- (2 shades), 1935 Jubilee set, 1939 Huguenot set, 1947-54 5/- (both shades), 1954 set, later issues, Postage Dues, etc., part original gum or unmounted mint, except one, chiefly fine £700-800



Ex 270

- x270 ★ 1913-24 set of fourteen to £1, each overprinted or handstamped ‘SPECIMEN’, large part original gum; fine and a scarce set. S.G. 3s-17s, £1,600. Photo £600-700

**SOUTHERN NIGERIA**



Ex 271

- x271 ★ 1912 Multiple Crown CA set of twelve to £1, **five sets**, chiefly fine to very fine and large part original gum. S.G. 45-56, £1,250. Photo £300-400



**SOUTHERN RHODESIA**



Ex 272

x272 ©

1924-47 attractive group of specimen sets comprising 1924 Admiral ½d. and 2d. in two unissued colours each overprinted in three lines 'WATERLOW AND SONS/LIMITED/SPECIMEN' and with small security punch in 'so' of 'Southern' (no gum), 1932 Victoria Falls 2d. (2) and 3d. (no gum) in unissued colours overprinted in two lines 'WATERLOW & SONS LIMITED/SPECIMEN' and security hole punched in left hand value tablet, 1935 Silver Jubilee 1d. to 3d., set of four Colour Trials overprinted in two lines 'WATERLOW & SONS LTD/SPECIMEN' and with security holes punched, 1937 Coronation 1d. (in three unissued colours) and 6d. in unissued colour overprinted in two lines 'WATERLOW & SONS LTD/SPECIMEN' diagonally and with security holes punched and 1947 1d. Royal Visit and 6d. Victory each overprinted in two lines 'WATERLOW & SONS LIMITED/SPECIMEN' vertically, security holes punched; fine to very fine and large part original gum unless otherwise mentioned. S.G. 1-67 var. Photo

£800-1,000

**SWAZILAND**

x273 ☉

1889-1969 unmounted mint collection in a stockbook including 1889-90 ½d. to 1/-, 2/6d. (2) and 5/- (2), not all guaranteed, 1933 ½d. to 10/- (2), 1938-54 ½d. to 10/- with perf changes, 1948 Wedding, 1956 ½d. to £1, 1961 ½c. on ½d. to 2r. on £1 with all types except 25c. Type II bottom left, 1961 ½c. to 2r., 1962-66 ½c. to 2r. and 1968 ½c. to 2r. Cat. £3500

£700-900

**TANGANYIKA**



274

x274 ★

1917-21 20r. black and purple on red and 50r. carmine and green, large part original gum and fine; the 50r. centred to right and with R.P.S. Certificate (1971). S.G. 61-62, £1,075. Photo

£300-500

**Mafia Island**



275

x275 ★田

1915 (Jan.) 45h. black and mauve, overprinted Type M1 in deep purple, **block of four**, very lightly mounted on one stamp only, fine and incredibly scarce, *Gibbs estimates only between twenty and thirty stamps were overprinted*. B.P.A. Certificate (1992). S.G. M7B, £5,200+. Photo

£3,000-6,000

**TOBAGO**



————— Ex 276 —————

x276 ★

1880 CC set of five to 1/- and 1882-84 CA set of five, chiefly fine and part original gum; some minor imperfections and light tone spots in places. S.G. 8-19, £1,800+. Photo

£400-600



*The Royal Philatelic Society London*

We are pleased to receive proposals for membership of the Society which is through election.  
If you are interested in membership, please contact us at [secretary@rpsl.org.uk](mailto:secretary@rpsl.org.uk)  
If you have no proposer or seconder, please contact us for further information.

Tel: 00 44 (0)20 7486 1044 | [www.rpsl.org.uk](http://www.rpsl.org.uk)

The world's oldest and most prestigious philatelic society, established 1869, with over 2,000 members in more than 70 countries.  
\*\*\*

Extensive premises in London's West End house the Society's superlative library, plus Museum and Archive, and provide first-class meeting facilities.  
\*\*\*

The Society's Online Catalogue provides access to over three-quarters of a million philatelic indexes to members world-wide.  
\*\*\*

A fascinating programme of displays and meetings throughout the year, supplemented by regional meetings and gatherings at major international events.  
\*\*\*

The Society publishes ten times a year its own journal, *The London Philatelist*, containing articles of outstanding philatelic research, in addition to publishing major philatelic works.  
\*\*\*

We are honoured to have Her Majesty Queen Elizabeth II as our Royal Patron

**TONGA**



277

- x277 ★ 1897 7½d. black and green, variety **centre inverted**, large part original gum; light crease in one corner, otherwise an attractive example of this scarce variety. S.G. 48a, £9,000. Photo £3,000-4,000
- PROVENANCE:  
Colonel E.H.R. Green, January 1944, and accompanied by the original front cover of the auction catalogue and lotting slip

**TRANSVAAL**



278

- x278 ★ 1903 £5 orange-brown and violet, a well centred example with toned original gum; attractive and scarce. S.G. 259, £2,250. Photo £250-350

**TRINIDAD AND TOBAGO**

- x279 ⊕ A mint collection in a stockbook including Trinidad 1896-1906 5/- (2) and 1901-06 5/- and Trinidad and Tobago including 1913-23 MCA 5/-, 1922-28 ½d. to £1, 1935-37 1c. to 72c. with perf changes, 1938-44 1c. to \$4.80, 1953-59 1c. to \$4.80 and 1960-67 1c. to \$4.80; the vast majority unmounted. Cat. £780+ £100-200

**TRISTAN DA CUNHA**

- x280 ⊕ 1952-70 unmounted mint collection including 1952 ½d. to 10/-, 1954 ½d. to 10/-, 1961 ½c. to 1r., 1963 Resettlement and 1965-67 ½d. to £1. Cat. £390+ £80-100



**VIRGIN ISLANDS**



Ex 281

- x281

1866-1964 virtually complete both mint and used collection on album pages along with duplicates and varieties, condition a little mixed but plenty good to fine, worthy of closer inspection, S.G. £10,000+. Photo

£1,000-2,000
- x282 ☉

1866-1970 unmounted mint collection on Hagner leaves including 1866 toned paper 6d., 1867-70 perf 15 1d., 1879-80 CC ½d. and 2½d., 1883-84 CA ½d. yellow-buff, 1887-89 1d. (2), 4d. (2), 6d. and 1/-, 1899 ½d. to 5/- less 1/-, 1904 ½d. to 6d. and 2/6d., 1913-19 MCA ½d. to 1/- and 5/-, 1921 Script ½d. (2) and 1d. (2), 1922-28 MCA 3d. to 5/- and Script ½d. to 5/-, 1938-47 ½d. to £1, 1952 1c. to \$4.80, 1956-62 ½c. to \$4.80 and 1964-48 1c. to \$2.80. Cat. £1400+

£280-320

**ZANZIBAR**



Ex 283

- x283

1898-1913 mint and used selection on stockcards comprising 1896 1r. blue with **handpainted flags**, in a reconstructed used block of four centrally cancelled and hinged to piece, 1899-1901 used set of seventeen to 5r. (½a. unused) with chiefly crisp cancellations, 1904 Monogram unused set of fifteen to 5r. with part to large part original gum and 1913 unused set of fifteen to 10r. with large part original gum; a chiefly fine group. Photo

£450-550

**ZULULAND**



Ex 284

- x284 ★

1888-93 set of twelve to 5/- (two 5/-) and Natal overprint ½d. and 6d., chiefly fine and large part original gum; some with light gum toning or gum adhesion. S.G. 1-12, 16, £1,920. Photo

£400-500

## COLLECTIONS AND RANGES

### British Africa

x285

1853-1903 collection on well-filled old time album pages starting with Cape of Good Hope Triangles (8) including 1d. brick-red unused, cut into at base, 1858 1/- bright yellow green used with good margins, 4d. woodblock blue, cut into, other used Cape examples to 1903, Griqualand West (12) including inverted 'G' on ½d. unused, Orange Free State mixed mint and used with very few spaces and a few Fiscal stamps to £5 used; a useful selection in mixed condition

£400-600

### British South Atlantic



Ex 286

x286 ★

1856-1956 mint collection on pages with Ascension including 1922 set of nine, 1924-33 set of twelve, 1934 set of ten and 1938-53 set of sixteen, St. Helena with 1856 6d. blue and thirty-five other early issues, 1890-97 set to 10d., 1903 set of six, 1912-16 set of ten, 1922 MCA set to 5/- and Script set to 10/-, 1934 Centenary set, Tristan Da Cunha 1952 set to 10/- and 1954, 1960 and 1961 sets etc. chiefly fine. S.G. £8,500+. Photo

£1,500-2,500

### British Empire

x287

A selection of Issued and Specimen sets from various Territories of the British Empire including Barbuda with 1922 set to 5/- and Leeward Islands overprint set each overprinted 'SPECIMEN', Cook Islands with 1893-1919 values to 10p and most complete Issued sets from 1932 to 1974, Niue with 1902-16 set to 1/-, 1918 Fiscal 5/- and then largely complete from 1920-72, New Zealand Ross Dependency, North West Pacific Islands 1915-16 set to £1, St. Vincent with full sets and values to £1 overprinted or perforated 'SPECIMEN', Samoa with 1914-25 Fiscals with values to £1 and largely complete from 1920-72 and Zanzibar with values to 10r.; chiefly fine with a few small faults

£800-1,000



Ex 288

x288 ©

A collection of predominantly Specimen sets from Postal Archive Collections with various countries from the British Empire including Lagos with 1874-82 Issued set to 1/-, 1887-94 set to 10/-, 1904 set to 10/-, Leeward Islands 1913-22 set to 5/- and 1921-23 set to £1 etc., Newfoundland including 1935 Silver Jubilee and 1937 Coronation sets, Niue with Issued stamps to £1, Northern Nigeria 1910 set to 10/-, Southern Nigeria with values to £1, Somaliland 1904 set to 5r., Official set, Jubilee, Coronation etc., South West Africa, Swaziland with 1933 set to 10/- and most other sets to 1973, Togo 1915 set to 20/-, Tonga, Trinidad, Turks and Caicos, Uganda and Virgin Islands; chiefly fine and hinged to the pages, high catalogue value. Photo

£2,000-4,000





Ex 289

x289 ★

A selection of mint sets and single stamps from across the Empire, ex-auction lots on stock cards (31) including Antigua 1903-07 set to 5/-, Ascension 1938-53 set to 10/-, Bahamas 1884-90 set to £1 and 1901-03 set to 3/-, Barbados 1892-1903 set to 2/6d., Cayman Islands 1907-09 set to 10/-, 1912-20 set to 10/- (2), Cook Islands 1892 set of four plenty of other sets and singles including from Cyprus, Dominica, Falkland Islands, Fiji, Gibraltar, Gold Coast, Hong Kong, Labuan, Rhodesia etc. chiefly good to fine. Photo

£1,500-2,500



Ex 290

x290

A selection of mint and used ex-auction lots including Great Britain 1840 1d. black used with crisp red Maltese Cross, 1937-50 1½d. to 1/- unmounted imprint blocks of six, Antigua 1862 6d. unused, Bechuanaland Protectorate 1888 surcharges 1d on 1d. to 4d. on 4d. unused, British Honduras 1922-33 set to \$5, Burma 1937 Service set to 10r. mint, Canada 1898 Numeral 8c. orange imperf. pair, Ceylon 1857-59 10d. unused, Cyprus 1924-28 MCA £1 mint (2), Fiji 1912-23 £1 mint, Labuan 1896 Jubilee 3c. **overprint treble** with Ceremuga Certificate, Nauru 1916-23 10/- overprint (2) etc; chiefly fine. Photo

£2,000-4,000



Collections and Ranges, British Empire - *contd.*



Ex 291

x291

A selection of mint and used ex-auction lots (18) from across the British Empire including sets and single stamps from Bechuanaland, Bermuda, British Guiana, Burma, Cyprus, Gibraltar, Hong Kong, India Q.V. covers (3) and Mauritius; highlights include Bermuda Key Types 1910-22 ¼d. to £1 and 1922-34 ¼d. to 12/6d. both sets mint, Cyprus 1903 ½pi. to 45pi used, Gibraltar 1886-98 ½d. to 1/- mint, 1904-12 ½d to £1 mint, Hong Kong 1938 set to \$10 (both) mint and Mauritius 1879-80 2c. to 2r50c. and 1859 Britannia 9d. magenta with Sismondo Certificate, both unused; chiefly good to fine.

£2,000-4,000



Ex 292

x292 ★

A mainly mint, valuable accumulation in small stockbook including Great Britain with 1883-84 Anchor 5/- on white paper, 1902-10 2/6d. (3) and 5/- (2), 1929 P.U.C. £1, 1939-48 set to £1 (2) and 1948 Silver Wedding set blocks of four, Canada 1898 Jubilee \$2 with Vincent Greene Cert., Lagos 1874-75 CC to 1/- (the 1/- with Philatelic Foundation Cert. which states there is a small thin), 1884-86 CA set to 10/- (5/- with R.P.S. Certificate), 1904 CA and 1904-06 MCA sets to 10/-, better Cyprus sets, Falkland Islands 1898 2/6d. and 5/- overprinted 'SPECIMEN', Montserrat including 1876 6d. blue-green with Brandon Cert. and 1885 1d. red with **inverted** 's' and Brandon Cert., St. Helena 1922-37 £1, Northern Rhodesia 1925-29 set to 20/- and 1938-52 20/- block of four unmounted, New Brunswick 1860-63 Connell 5c. imperf. proof from the foot of the sheet etc; an impressive selection in chiefly fine condition. S.G. £15,000+. Photo

£2,500-5,000



Ex 293

x293 ★

A selection of mint sets and single stamps from across the British Empire, ex-auction lots in chiefly fine condition including Antigua 1921-29 MCA set to £1 and Script set to 4/-, British Honduras 1913-21 and 1922 \$5, Cyprus 1923 MCA £1 marginal example with plate number, Dominica 1923-33 set to £1 (two each of 5/- to £1), Gold Coast with values to 20/-, Hong Kong 1912-21 \$10, K.U.T. 1912-21 20r., Leeward Islands 1921-32 £1 (2), Natal 1908-09 £1, Nigeria, Northern Nigeria and Southern Nigeria G.V. £1, St. Helena 1922-37 1/6d. to £1 (two £1) etc. Chiefly fine and with huge catalogue value. Photo

£3,000-6,000



Ex 294

x294

A selection of forty-one mint and used sets and single items, ex-auction lots, including Great Britain 1884 Crowns £1 brown-violet used, Gibraltar 1903 £1 purple and black on red mint, Gold Coast 1902 set to 20/- (the 20/- a mint horizontal pair), Nova Scotia 1851-60 6d. green used, Nyasaland 1921-30 set to 10/- mint, Rhodesia Double Head £1 mint, St. Helena 1922-37 set to £1 plus extras as well as fine single stamps and full sets from Antigua, Bermuda, British Honduras, British East Africa, Leeward Islands, Malaya, Natal, Newfoundland etc; chiefly fine with huge catalogue value. Photo

£4,000-6,000

x295 ★

Sixty-six ex-auction lots from across the Commonwealth housed in a small box featuring fine mint sets and singles from Q.V. through to GVI from Bermuda, British Honduras, Cayman Islands, Ceylon, Gilbert and Ellice islands, Gambia, India, Johore, Mauritius, Malta, Montserrat, Nyasaland, Rhodesia, Sierra Leone, Seychelles, St. Helena, St. Lucia, Trengganu etc; Chiefly fine and with huge catalogue value

£5,000-7,000



Collections and Ranges, British Empire - *contd.*

King George VI



Ex 296

x296

1938-54 selection of mint Key Type Issues on stock pages from Bermuda, Leeward Islands and Nyasaland predominantly in blocks of four; various shades and printings with Bermuda 2/- (20, five blocks of four), 2/6d. (8, two blocks of four), 5/- (13, three blocks of four and a single), 10/- (10, block of four and six singles) 12/6d. (block of four) and £1 (14, three blocks of four and two singles), Leeward Islands 1938-51 ¼d. to 1/- and £1 (two blocks of four) and Nyasaland 2/- (block of four), 2/6d. (block of four), 5/- (two blocks of four), 10/- (two blocks of four) and £1 (9, two blocks of four and a single); fine to very fine with plenty unmounted mint. Photo

£800-1,000

**END OF THE SALE**



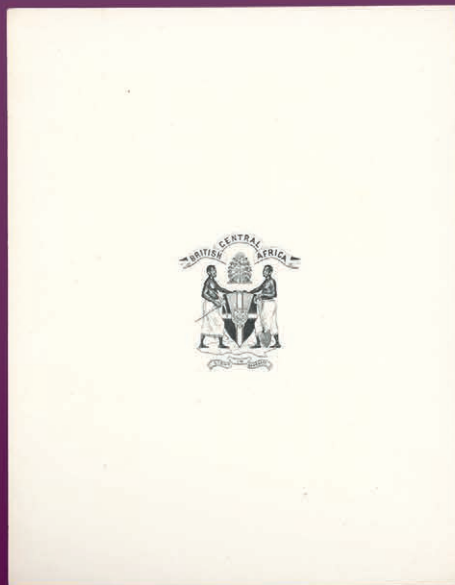
# SPINK

WHERE HISTORY IS VALUED

## THE PHILATELIC COLLECTORS' SERIES

30 JANUARY 2020 | LONDON

INCLUDING FINE NYASALAND



For more information, please contact  
Ian Shapiro: Tel: +44 (0)20 7563 4060 | Email: [ishapiro@spink.com](mailto:ishapiro@spink.com)  
SPINK LONDON | 69 Southampton Row | Bloomsbury | London | WC1B 4ET



#SPINK\_AUCTIONS [WWW.SPINK.COM](http://WWW.SPINK.COM)




# e-auctions **SPINK**

## HOW TO BID IN e-AUCTIONS

LOTS OFFERED ARE AVAILABLE FOR SALE ONLINE ONLY

*on [www.spink.com](http://www.spink.com) or on the Spink Live App, which can be downloaded from App Store or Google Play*



To be able to participate in our e-Auctions you need to be registered on **WWW.SPINK.COM** or via the **SPINK LIVE APP**.



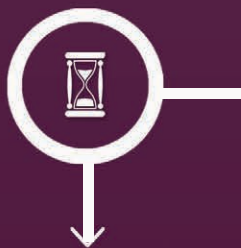
Log on to [www.spink.com](http://www.spink.com) by entering your Client Number and Password. Click on the **SPINK LIVE** button on the homepage and select the internet auction you would like to participate in. Use the same credentials to log into the App via the menu. Select the sale and click on **VIEW LOTS**.



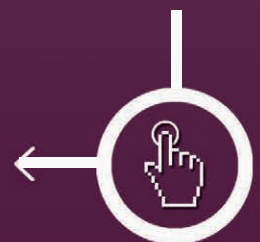
Select the lot you would like to bid on and place a bid. You can also place your max bid and the software will bid on your behalf increasing the price in increments to keep you in the lead up to your max bid.



If you are outbid you will receive an email notification giving you the option to increase your bid before the closing time.



The first lot will close on the date and time stated in the auction calendar. Each subsequent lot will close at 30 second intervals. The closing time of each lot will be displayed in the description. If a bid is placed within 30 seconds of the closing time it will be extended by a further 30 seconds, and so on. These lot/s will be automatically placed in order of the new closing time



The highest bid at the closing time will be the successful bid and the price will be the hammer price. All lots sold in the e-Auction are subject to charges per section 5 and all clauses of the T & C for Buyers (e-Auctions).



Invoices will be emailed after the last lot has closed. Invoice total will consist of hammer price, buyer's premium of 20% on hammer price, VAT (where applicable) and postage. Payment will be due within seven (7) days for all clients.

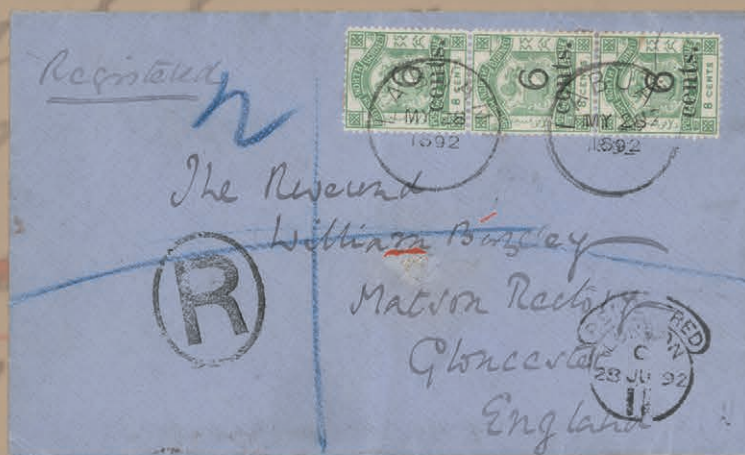
For more information about how to bid in e-Auctions, please contact the Auction Team:  
Email: [spinklivesp@spink.com](mailto:spinklivesp@spink.com)

#SPINK\_AUCTIONS [WWW.SPINK.COM](http://WWW.SPINK.COM)



# STAMPS AND COVERS OF THE WORLD

17-31 JANUARY 2020 | LONDON



For further information please contact Nick Startup  
Tel. +44(0)20 7563 4073 | Email: [nstartup@spink.com](mailto:nstartup@spink.com)

SPINK LONDON | 69 Southampton Row | WC1B 4ET | United Kingdom

[WWW.SPINK.COM](http://WWW.SPINK.COM)



# SPINK

*WHERE HISTORY IS VALUED*

In May 2018, Spink was honoured to host for RPSL an auction to assist with the Tomorrow's Royal campaign.

Following the success of that auction Spink is proud to continue being part of the Tomorrow's Royal campaign, by holding some of our most important and prestigious auctions, at the new home of the Royal Philatelic Society of London.

We believe this is the start of a new era in philately, as well as a significant development in philatelic co-operation for RPSL and Spink London.

With the RPSL now at the forefront of global philately, a development we hope, will benefit all philatelists for many years to come.



The Royal Philatelic Society  
London  
15 Abchurch Lane,  
London, EC4N 7BW  
[www.rpsl.org.uk](http://www.rpsl.org.uk)

**WE ARE ACCEPTING CONSIGNMENTS  
FOR OUR MAY 2020 AUCTIONS  
AT THE ROYAL PHILATELIC SOCIETY LONDON**  
featured at LONDON 2020 INTERNATIONAL STAMP EXHIBITION

LONDON | NEW YORK | HONG KONG | SINGAPORE | SWITZERLAND



#SPINK\_AUCTIONS [WWW.SPINK.COM](http://WWW.SPINK.COM)

# SPINK

LONDON  
1666

**Sale Venue:**  
At The Royal Philatelic Society London  
15 Abchurch Lane  
2nd Floor  
London EC4N 7BW  
tel: +44 (0)20 7563 4005  
fax: +44 (0)20 7563 4037  
email: [auctionteam@spink.com](mailto:auctionteam@spink.com)

**WRITTEN BIDS FORM**

This form should be sent or faxed to the Spink auction office in advance of the sale. References for new clients should be supplied in good time to be taken up before the sale. Bids received later than one hour before the start of the sale may not be processed.



NAME \_\_\_\_\_  
ADDRESS \_\_\_\_\_  
\_\_\_\_\_  
\_\_\_\_\_  
POSTCODE \_\_\_\_\_

69 Southampton Row, Bloomsbury,  
London WC1B 4ET  
tel: +44 (0)20 7563 4005  
fax: +44 (0)20 7563 4037  
email: [auctionteam@spink.com](mailto:auctionteam@spink.com)

YOU CAN ALSO BID IN REAL TIME ON SPINK LIVE.  
PLEASE DOWNLOAD SPINK LIVE APP FROM THE  
APP STORE OR VISIT [WWW.SPINK.COM](http://WWW.SPINK.COM),  
REGISTER AND LOG INTO THE SALE.

SALE TITLE	DATE	CODE NAME	SALE NO.
<b>The 'Lionheart' Collection of Great Britain and British Empire - Part XI</b>	<b>Wednesday 29 January 2020 at 10.00 a.m.</b>	<b>LIONHEART</b>	<b>20011</b>

I request Spink, without legal obligations of any kind on its part, to bid on the following Lots up to the price given below. I understand that if my bid is successful the Purchase Price will be the sum of the final bid and Buyer's Premium as a percentage of the final bid, any VAT chargeable, also postage charge and a fee for paying by card. The Rate of Buyer's Premium is 20% of the final hammer price of each lot. I understand Spink will pursue me for payment for any successful bid. In addition, I understand and consent that Spink may share my personal details relating to the default with other auction houses and live bidding platforms to protect themselves from such defaults.

All bids shall be treated as offers made on the Terms and Conditions for Buyers printed in the catalogue. I also understand that Spink provides the service of executing bids on behalf of clients for the convenience of clients and that Spink will not be held responsible for failing to execute bids. If identical commission bids are received for the same Lot, the commission bid received first by Spink will take precedence. Please note that you will not be notified if there are higher written bids received.

**BIDDERS PLEASE NOTE OUR EXTENSION CLAUSES IN OUR TERMS AND CONDITIONS FOR BUYERS  
PLEASE PRINT CLEARLY IN BLOCK LETTERS AND ENSURE THAT BIDS ARE IN STERLING**

Lot Number (in numerical order)	Price Bid £ (excluding Buyer's Premium)

Lot Number (in numerical order)	Price Bid £ (excluding Buyer's Premium)

Lot Number (in numerical order)	Price Bid £ (excluding Buyer's Premium)

Please hold my purchased lots for collection

TEL. HOME \_\_\_\_\_ TEL. OFFICE \_\_\_\_\_

FAX \_\_\_\_\_ E-MAIL \_\_\_\_\_

SIGNATURE \_\_\_\_\_ VAT NUMBER \_\_\_\_\_

I agree to receive notifications about Spink auctions, news and events via email and direct mail

I agree to receive marketing notifications related only to the following categories (*please select as appropriate*)

**Autographs / Banknotes / Bonds & Shares / Books / Coins / Comics / Handbags / Jewellery / Maps / Medals / Stamps / Watches / Whiskies & Spirits / Wine / Corporate News & Events**

We will use the personal information you provide to us as set out in our privacy notice available at [www.spink.com/privacy-policy](http://www.spink.com/privacy-policy)







# SPINK

*WHERE HISTORY IS VALUED*

## SPINK ON SOCIAL MEDIA

Follow Spink on social media and gain an extra insight into some of the most exciting items in our auctions from across the globe. Watch our auction podcasts on Youtube and get a specialist's view, scan the QR code and engage with our Wechat page, there's always something fascinating at Spink!



#SPINK\_AUCTIONS  
WWW.SPINK.COM



# TERMS AND CONDITIONS FOR BUYERS

These conditions set out the terms on which we (**Spink and Son Limited** of 69 Southampton Row, Bloomsbury London WC1B 4ET (company no. 04369748)) contract with you (**Buyer**) either as agent on behalf of the Seller or as principal if we are the Seller. You should read these conditions carefully.

## 1 DEFINITIONS

The following definitions apply in these conditions:

<b>Auctioneers' Margin Scheme</b>	means a VAT margin scheme as defined by HM Revenue & Customs;
<b>Buyer's Premium</b>	means the charge payable by you as a percentage of the Hammer Price, at the rates set out in clause 5.1 below;
<b>Certificate of Authenticity</b>	means a certificate issued by an Expert Committee confirming the authenticity of a Lot;
<b>Expert Committee</b>	means a committee of experts to whom a Lot may be sent for an extension in accordance with clause 3.4.3;
<b>Forgery</b>	means a Lot constituting an imitation originally conceived and executed as a whole with a fraudulent intention to deceive as to authorship, origin, age, period, culture or source where the correct description as to such matters is not reflected by the description in the catalogue and which at the date of the auction had a value materially less than it would have had if it had been in accordance with the description in the catalogue. Accordingly, no Lot shall be capable of being a Forgery by reason of any damage and/or restoration work of any kind (including re-enamelling);
<b>Hammer Price</b>	means the amount of the highest bid accepted by the auctioneer in relation to a Lot;
<b>Lot</b>	means any item deposited with us for sale at auction and, in particular, the item or items described against any Lot number in any catalogue;
<b>Reserve</b>	the amount below which we agree with the Seller that the Lot cannot be sold;
<b>Seller</b>	means the owner of the Lot being sold by us;
<b>Spink Group</b>	Spink and Son Limited, our subsidiaries and associated companies.
<b>VAT</b>	value added tax chargeable under VAT and any similar replacement or additional tax; and
<b>VAT Symbols</b>	means the symbols detailing the VAT status of the Lot details of which are set out at the back of the catalogue.

## 2 SPINK'S ROLE AS AGENT

- 2.1 All sales undertaken by us either at auction or privately are undertaken either as agent on behalf of the Seller or from time to time, as principal if we are the owner of the Lot. Please note that even if we are acting as agent on behalf of the Seller rather than as principal, we may have a financial interest in the Lot.
  - 2.2 The contract for the sale of the Lot will be between you and the Seller.
  - 2.3 The Seller's sale of the Lot to you is subject to any terms and conditions, disclaimers or exclusions included with any promotional material or catalogue descriptions for the Lot, or otherwise notified to you by the Seller or us on their behalf.
- 3.4.3 If we accept a request for an expert opinion or Certificate of Authenticity we will submit the Lot to the Expert Committee. You acknowledge and accept that the length of time taken by an Expert Committee to reach an opinion will vary depending on the circumstances and in any event is beyond our control.
  - 3.4.4 We will not accept a request for an extension on account of condition. Any Lot described in the catalogue as having faults or defects may not be returned even if an expert opinion or Certificate of Authenticity cites other faults or defects not included in the catalogue description, other than in the case of a Forgery.
  - 3.4.5 Should Spink accept a request for an extension under the foregoing provisions of this paragraph, the fact may be stated by the Auctioneer from the rostrum prior to the sale of the Lot.
  - 3.4.6 It should be noted that any stamp accompanied by a Certificate of Authenticity is sold on the basis of that Certificate only and not on the basis of any other description or warranty as to authenticity. No request for an extension will be accepted on such a stamp and the return of such a stamp will not be accepted.
  - 3.4.7 If you receive any correspondence from the Expert Committee in relation to the Lot, including but not limited to a Certificate of Authenticity, you must provide us with copies of such correspondence no later than 7 days after you receive such correspondence.

## 3 BEFORE THE SALE

### 3.1 Examination of goods

You are strongly advised to examine personally any goods in which you are interested, before the auction takes place. Condition reports are usually available on request. We provide no guarantee to you other than in relation to Forgeries, as set out in clause 5.13 of these Terms and Conditions.

### 3.2 Catalogue descriptions

3.2.1 Statements by us in the catalogue or condition report, or made orally or in writing elsewhere, regarding the authorship, origin, date, age, size, medium, attribution, genuineness, provenance, condition or estimated selling price of any Lot are merely statements of opinion, and are not to be relied on as statements of definitive fact. Catalogue and web illustrations are for guidance only, and should not be relied on either to determine the tone or colour of any item. No lot shall be rejected on the grounds of inaccurate reproduction. No lot illustrated in the catalogue and online shall be rejected on the grounds of cancellation, centring, margins, perforation or other characteristics apparent from the illustration. Estimates of the selling price should not be relied on as a statement that this price is either the price at which the Lot will sell or its value for any other purpose.

3.2.2 Many items are of an age or nature which precludes their being in perfect condition and some descriptions in the catalogue or given by way of condition report make reference to damage and/or restoration. We provide this information for guidance only and the absence of such a reference does not imply that an item is free from defects or restoration nor does a reference to particular defects imply the absence of any others.

3.2.3 Other than as set out in clause 5.13, and in the absence of fraud, neither the Seller nor we, nor any of our employees or agents, are responsible for the correctness of any statement as to the authorship, origin, date, age, attribution, genuineness or provenance of any Lot nor for any other errors of description or for any faults or defects in any Lot. Every person interested should exercise and rely on his own judgment as to such matters.

### 3.3 Your Responsibility

You are responsible for satisfying yourself as to the condition of the goods and the matters referred to in the catalogue description.

### 3.4 Extensions – Stamps only

3.4.1 If you wish to obtain an expert opinion or Certificate of Authenticity on any Lot (other than a mixed Lot or Lot containing undescribed stamps) you must notify us in writing not less than forty-eight hours before the time fixed for the commencement of the first session of the sale. If accepted by us, such request shall have the same effect as notice of an intention to question the genuineness or description of the Lot for the purposes of clause 5.13 (Refund in the case of Forgery) of these Terms and Conditions and the provisions of clause 5.13 (Refund in the case of Forgery) shall apply accordingly.

3.4.2 Notice of a request for an expert opinion or Certificate of Authenticity must give the reason why such opinion is required and specify the identity of your proposed expert which will be subject to agreement by us. We reserve the right, at our discretion, to refuse a request for an expert opinion or Certificate of Authenticity including (without limitation) where the proposed expert is not known to us.

## 4 AT THE SALE

### 4.1 Refusal of admission

Our sales usually take place on our own premises or premises over which we have control for the sale, and we have the right, exercisable at our complete discretion, to refuse admission to the premises or attendance at an auction.

### 4.2 Registration before bidding

All bidders must be registered either by completing a registration form or creating an account online. Please be aware that we usually require buyers to present identification before making a bid at auction, undergo a credit check or provide a trade reference.

If you have not bid successfully with Spink in the past, or you are registering with us for the first time, we reserve the right to require a deposit of up to 50% of the amount you intend to spend. Such deposit will be deducted from your invoice should you be successful. If you are unsuccessful at auction, your deposit will be returned by the same means it was paid to Spink.

Some lots may be designated, prior to the auction, as "Premium Lots", which means a deposit may be required before placing a bid on the item for sale. Information will be posted on our website in such an event.

### 4.3 Bidding as Principal

When making a bid (whether such bids are made in person or by way of telephone bids operated by Spink, commission or online or email bids), you will be deemed to be acting as principal and will be accepting personal liability, unless it has been agreed in writing, at the time of registration, that you are acting as agent on behalf of a third party buyer acceptable to us.

### 4.4 Commission Bids

If you give us instructions to bid on your behalf, by using the form provided in our catalogues or via our website, we shall use reasonable endeavours to do so, provided these instructions are received not later than 24 hours before the auction. If we receive commission bids on a particular Lot for identical amounts, and at auction these bids are the highest bids for the Lot, it will be sold to the person whose bid was received first. Commission bids are undertaken subject to other commitments at the time of the sale, and the conduct of the auction may be such that we are unable to bid as requested. Since this is undertaken as a free service to prospective buyers on the terms stated, we cannot accept liability for failure to make a commission bid. You should therefore always attend personally if you wish to be certain of bidding.

- 4.5 **On-line Bidding**  
We offer internet services as a convenience to our clients. We will not be responsible for errors or failures to execute bids placed on the internet, including, without limitation, errors or failures caused by (i) a loss of internet connection by either party for whatever reason; (ii) a breakdown or problems with the online bidding software and/or (iii) a breakdown or problems with your internet connection, computer or system. Execution of on-line internet bids on www.spink.com and Spink Live is a free service undertaken subject to other commitments at the time of the auction and we do not accept liability for failing to execute an online internet bid or for errors or omissions in connection with this activity.
- 4.6 **Telephone Bids**  
If you make arrangements with us not less than 24 hours before the sale, we shall use reasonable endeavours to contact you to enable you to participate in bidding by telephone, but in no circumstances will we be liable to either the Seller or you as a result of failure to do so.
- 4.7 **Currency Converter**  
At some auctions, a currency converter will be operated, based on the one month forward rates of exchange quoted to us by Barclays Bank Plc or any other appropriate rate determined by us, at opening on the date of the auction. Bidding will take place in a currency determined by us, which is usually sterling for auctions held in London. The currency converter is not always reliable, and errors may occur beyond our control either in the accuracy of the Lot number displayed on the converter, or the foreign currency equivalent of sterling bids. We shall not be liable to you for any loss suffered as a result of you following the currency converter.
- 4.8 **Video images**  
At some auctions there will be a video screen. Mistakes may occur in its operation, and we cannot be liable to you regarding either the correspondence of the image to the Lot being sold or the quality of the image as a reproduction of the original.
- 4.9 **Bidding Increments**  
Bidding generally opens below the low estimate and advances in the following order although the auctioneer may vary the bidding increments during the course of the auction. The normal bidding increments are:
- |                    |                                  |
|--------------------|----------------------------------|
| Up to £100         | by £5                            |
| £100 to £300       | by £10                           |
| £300 to £600       | £320-£350-£380-£400 etc.         |
| £600 to £1,000     | by £50                           |
| £1,000 to £3,000   | by £100                          |
| £3,000 to £6,000   | £3,200-£3,500-£3,800-£4,000 etc. |
| £6,000 to £10,000  | by £500                          |
| £10,000 to £20,000 | by £1,000                        |
| £20,000 and up     | Auctioneer's discretion          |
- 4.10 **Bidding by Spink**
- 4.10.1 We reserve the right to bid on Lots on the Seller's behalf up to the amount of the Reserve (if any), which will never be above the low estimate printed in the auction catalogue.
- 4.10.2 The Spink Group reserves the right to bid on and purchase Lots as principal.
- 4.10.3 Lots with this symbol (⊕) indicate that a party has provided Spink with an irrevocable bid on the lot that will be executed during the sale at a value that ensures that the lot will sell. The irrevocable bidder, who may bid in excess of the irrevocable bid, will be compensated based on his bid in the event he or she is not the successful bidder or may receive a fixed fee in the event he or she is the successful bidder. If the irrevocable bidder is the successful bidder, the fixed fee for providing the irrevocable bid may be netted against the irrevocable bidder's obligation to pay the full purchase price for the lot. If the irrevocable bid is not secured until after the printing of the auction catalogue, a pre-sale announcement will be made indicating that there is an irrevocable bid on the lot.
- If you are interested in placing an irrevocable bid in an auction, please contact us at chairmanoffice@spink.com. Typically, only some of the lots with an estimate, which must exceed £100,000 or equivalent in other currencies are open to irrevocable bids.
- 4.11 **The Auctioneer's Discretion**  
The auctioneer has the right at his absolute discretion to refuse any bid to advance the bidding in such manner as he may decide to withdraw or divide any Lot, to combine any two or more Lots and, in the case of error or dispute, to put an item up for bidding again.
- 4.12 **Successful Bid**  
Subject to the auctioneer's discretion, the striking of his hammer marks the acceptance of the highest bid, provided always that such bid is higher than the Reserve (where applicable), and the conclusion of a contract for sale between you and the Seller.
- 4.13 **After Sale Arrangements**  
If you enter into any private sale agreements for any Lot with the Seller within 60 days of the auction, we, as exclusive agents of the Seller reserve the right to charge you the applicable Buyer's Premium in accordance with these Terms and Conditions, and the Seller a commission in accordance with the terms of the Seller's agreement.
- 4.14 **Return of Lot**
- 4.14.1 Once your bid has been accepted for a Lot then you are liable to pay for that Lot in accordance with these Terms and Conditions. If there are any problems with a Lot then you must notify us within 7 days of receipt of the Lot, specifying the nature of the problem. We may then request that the Lot is returned to us for inspection. Save as set out in clause 5.13, the cancellation of the sale of any Lot and the refund of the corresponding purchase price is entirely at our sole discretion. We will not normally exercise that discretion if the Lot is not received by us in the same condition that it was in at the auction date.
- 4.14.2 No lot may be returned on account of condition if the condition was stated by a third party grading company (including, but not limited to PCGS, NGC, ANACS, ICG, PMG, WBG, Legacy Currency Grading).
- 5 **AFTER THE AUCTION**
- 5.1 **Buyer's Premium and other charges**  
In addition to the Hammer Price, you must pay us the Buyer's Premium at a rate of 20% of the final Hammer price of each lot, postage charge and a fee for paying by card.
- 5.2 **Value Added Tax**  
Other than in respect of Zero-rated Lots (o) VAT is chargeable on the Hammer price and the Buyer's premium of daggered (†) and (Ω) lots at the standard rate (currently 20%), and on lots marked (x) at the reduced rate (currently 5% on the Hammer price and 20% on the Buyer's premium). VAT on Margin scheme lots (identified by the absence of any VAT symbol next to the lot number) is payable at 20% on the Buyer's premium only.
- 5.3 **VAT Refunds**
- General**
- 5.3.1 As we remain liable to account for VAT on all Lots unless they have been exported outside the EU within 3 months of the date of sale, you will generally be asked to deposit all amounts of VAT invoiced. However, if a Spink nominated shipper is instructed, then any refundable VAT will not be collected. In all other cases credits will be made when proof of export is provided. If you export the Lot yourself you must obtain shipping documents from the Shipping Department for which a charge of £50 will be made.
- 5.3.2 If you export the Lot you must return the valid proof of export certificate to us within 3 months of the date of sale. If you fail to return the proof of export certificate to us within such period and you have not already accounted to us for the VAT, you will be liable to us for the full amount of the VAT due on such Lot and we shall be entitled to invoice you for this sum.
- 5.3.3 To apply for a refund of any VAT paid, the proof of export certificate must be sent to our Shipping Department clearly marked 'VAT Refund' within 3 months of the date of sale. No payment will be made where the total amount of VAT refundable is less than £50 and Spink will charge £50 for each refund processed.
- VAT Refunds - Buyers from within the EU**
- 5.3.4 VAT refunds are available on the Hammer Price and Buyer's Premium of Daggered (†) and Investment Gold (g) Lots. You must certify that you are registered for VAT in another EU country and that the Lot is to be removed from the United Kingdom within 3 months of the date of sale.
- 5.3.5 Where an EU buyer purchases a Lot on which import VAT has been charged, no refund of VAT is available from us. It may be possible to apply directly for a refund on form VAT 65 to HM Revenue & Customs Overseas Repayment Section, Londonderry.
- VAT Refunds - Buyers from outside the EU**
- 5.3.6 Where a Lot is included within the Auctioneers' Margin Scheme and evidence of export from the EU is produced within 3 months of the date of sale, the VAT on Buyer's Premium may be refunded.
- 5.3.7 Where the Lot is marked as a Daggered (†) Lot the VAT charged on the Hammer Price may be refunded where evidence of export from the EU is produced within 3 months of the date of sale. A refund of VAT charged on the Buyer's Premium can also be made on receipt of proof of business as a collectibles dealer.
- 5.3.8 Where the Lot is marked as an Omega (Ω) Lot or an Import VAT (x) Lot and evidence of export from the EU is produced within 3 months of the date of sale, the VAT charged on both the Hammer Price and Buyer's Premium may be refunded. Where required, we can advise you on how to export such Lots as a specific form of export evidence is required. Where we advise you on the export of the Lots, please be aware that the ultimate responsibility in respect of obtaining a valid proof of export certificate will lie with you and we will not be responsible for your failure to obtain such certificate.
- 5.3.9 Lot marked as Investment Gold (g) is exempt from VAT on Hammer price. A refund of VAT charged on the Buyer's Premium can be made on receipt of proof of business as a collectibles dealer and where evidence of export from the EU is produced within 3 months of the date of sale.
- 5.4 **Payment**
- 5.4.1 You must provide us with your full name and permanent address and, if so requested, details of the bank from which any payments to us will be made. You must pay the full amount due (comprising the Hammer Price, the Buyer's Premium and any applicable VAT) within seven days after the date of the sale. This applies even if you wish to export the Lot and an export licence is (or may be) required.
- 5.4.2 You will not acquire title to the Lot until all amounts due have been paid in full. This includes instances where special arrangements were made for release of Lot prior to full settlement.
- 5.4.3 Payment should be made in sterling by one of the following methods:
- Direct bank transfer to our account details of which are set out on the invoice. All bank charges shall be met by you. Please ensure that your client number is noted on the transfer.
  - By cheque or bank draft made payable to Spink and Son Ltd and sent to Spink at 69 Southampton Row, Bloomsbury, London WC1B 4ET. Please note that the processing charges for payments made by cheques or bank drafts drawn on a non-U.K bank shall be met by you. Please ensure that the remittance slip printed at the bottom of the invoice is enclosed with your payment.



- (iii) By Visa or Mastercard. All Corporate cards regardless of origin and Consumer debit and credit cards issued outside the EU are subject to a fee of 3%. For all card payments there are limits to the amounts we will accept depending on the type of card being used and whether or not the cardholder is present.
- 5.4.4 Payments should be made by the registered buyer and not by third parties, unless it has been agreed at the time of registration that you are acting as an agent on behalf of a third party.
- 5.5 Invoices**  
Invoices may consist of one or more pages and will show: Zero rated Lots (o); no symbol Lots sold under the Auctioneers' Margin Scheme; Lots marked (g) special scheme Investment Gold; Daggered Lots (†), imported Lots marked (x) and (Ω), (c) Lots with Zero rated hammer for EU VAT registered buyers.
- 5.6 Collection of Purchases**  
5.6.1 Unless specifically agreed to the contrary, we shall retain lots purchased until all amounts due to us, or to the Spink Group, have been paid in full. Buyers will be required to pay for their lots when they wish to take possession of the same, which must be within 7 days of the date of the sale, unless prior arrangements have been made with Spink. Without prior agreement, lots will not be released until cleared funds are received with regard to payments made by cheque.  
5.6.2 Unless we notify you to the contrary, items retained by us will be covered in accordance with our policy which is available for inspection at our offices from the date of sale for a period of seven days or until the time of collection, whichever is sooner. After seven days or from the time of collection, whichever is the earlier, the Lot will be entirely at your risk.  
5.6.3 Our policy will not cover and we are unable to accept responsibility for damage caused by woodworm, changes in atmospheric conditions or acts of terrorism.
- 5.7 Notification**  
We are not able to notify successful bidders by telephone. While Invoices are sent out by email or mail after the auction we do not accept responsibility for notifying you of the result of your bid. You are requested to contact us by telephone or in person as soon as possible after the auction to obtain details of the outcome of your bids to avoid incurring charges for late payment.
- 5.8 Packing and handling**  
5.8.1 We shall use all reasonable endeavours to take care when handling and packing a purchased Lot but remind you that after seven days or from the time of collection, whichever is sooner, the Lot is entirely at your risk. Our postage charges are set out at the back of the catalogue.  
5.8.2 It is the responsibility of the Buyer to be aware of any Import Duties that may be incurred upon importation to the final destination. Spink will not accept return of any package in order to avoid these duties. The onus is also on the Buyer to be aware of any Customs import restrictions that prohibit the importation of certain collectibles. Spink will not accept return of the Lot(s) under these circumstances. Spink will not accept responsibility for Lot(s) seized or destroyed by Customs.  
5.8.3 If the Buyer requires delivery of the Lot to an address other than the invoice address this will be carried out at the discretion of Spink.
- 5.9 Recommended packers and shippers**  
If required our shipping department may arrange shipment as your agent. Although we may suggest carriers if specifically requested, our suggestions are made on the basis of our general experience of such parties in the past and we are not responsible to any person to whom we have made a recommendation for the acts or omissions of the third parties concerned.
- 5.10 Remedies for non-payment or failure to collect purchases**  
5.10.1 If you fail to make payment within seven days of your stipulated payment date set out in your invoice, we shall be entitled to exercise one or more of the following rights or remedies:  
5.10.1.1 to charge interest at the rate of 2% per month compound interest, calculated on a daily basis, from the date the full amount is due;  
5.10.1.2 to set off against any amounts which the Spink Group may owe you in any other transaction the outstanding amount remaining unpaid by you;  
5.10.1.3 we may keep hold of all or some of your Lots or other property in the possession of the Spink Group until you have paid all the amounts you owe us or the Spink Group, even if the unpaid amounts do not relate to those Lots or other property. Following fourteen days' notice to you of the amount outstanding and remaining unpaid, the Spink Group shall have the right to arrange the sale of such Lots or other property. We shall apply the proceeds in discharge of the amount outstanding to us or the Spink Group, and pay any balance to you;  
5.10.1.4 where several amounts are owed by you to the Spink Group in respect of different transactions, to apply any amount paid to discharge any amount owed in respect of any particular transaction, whether or not you so direct;  
5.10.1.5 to reject at any future auction any bids made by you or on your behalf or obtain a deposit from you before accepting any bids.  
5.10.2 If you fail to make payment within thirty-five days, we shall in addition be entitled to:  
5.10.2.1 to cancel the sale of the Lot or any other item sold to you at the same or any other auction;  
5.10.2.2 to arrange a resale of the Lot, publicly or privately, and, if this results in a lower price being obtained, claim the balance from you together with all reasonable costs including a 20% seller's commission, expenses, damages, legal fees, commissions and premiums of whatever kind associated with both sales or otherwise, incurred in connection with your failure to make payment;  
5.10.2.3 when reselling the Lot, place a notice in our catalogue stating that you successfully purchased the Lot at auction but have subsequently failed to pay the Hammer Price of the Lot; or  
5.10.2.4 take any other appropriate action as we deem fit.  
5.10.3 If you fail to collect within fourteen days after the sale, whether or not payment has been made, you will be required  
5.10.3.1 to pay a storage charge of £2 per item per day plus any additional handling cost that may apply.  
5.10.3.2 you will not be entitled to collect the Lot until all outstanding charges are met, together with payment of all other amounts due to us.
- 5.11 Use of Default Information**  
If you fail to make payment for a Lot in accordance with these Terms and Conditions:  
5.11.1 we reserve the right to refuse you the right to make bids for any future auction irrespective of whether previous defaults have been settled; and  
5.11.2 you acknowledge that we may (as necessary for our legitimate interests those of other auctioneers and live bidding platforms in referencing customers and avoiding customer defaults) disclose details of such default to other auctioneers and live bidding platforms, which will include your name, address, nature of the default and the date of the default.  
Auctioneers or live bidding platforms who receive details of the default may rely on such information when deciding whether to enter into a transaction with you in the future.
- 5.12 Export Licence**  
5.12.1 If required we can, at our discretion, advise you on the detailed provisions of the export licensing regulations. Where we advise you in relation to export licensing regulations the ultimate responsibility in respect of any export will lie with you and we will not be responsible for your failure to apply for any necessary licences.  
5.12.2 If the Lot is going to be hand carried by you, you may be required to produce a valid export licence to us or sign a waiver document stating that a licence will be applied for.  
5.12.3 You should always check whether an export licence is required before exporting. Export licences are usually obtained within two or three weeks but delays can occur.  
5.12.4 Unless otherwise agreed by us in writing, the fact that you wish to apply for an export licence does not affect your obligation to make payment within seven days nor our right to charge interest on late payment.  
5.12.5 If you request that we apply for an export licence on your behalf, we shall be entitled to recover from you our disbursements and out of pocket expenses in relation to such application, together with any relevant VAT.  
5.12.6 We will not be obliged to rescind a sale nor to refund any interest or other expenses incurred by you where payment is made by you despite the fact that an export licence is required.
- 5.13 Refund in the case of Forgery**  
5.13.1 A sale will be cancelled, and the amount paid refunded to you if a Lot (other than a miscellaneous item not described in the catalogue) sold by us proves to have been a Forgery. We shall not however be obliged to refund any amounts if either (a) the catalogue description or saleroom notice at the auction date corresponded to the generally accepted opinion of scholars or experts at that time, or fairly indicated that there was a conflict of opinions, or (b) it can be demonstrated that the Lot is a Forgery only by means of either a scientific process not generally accepted for use until after publication of the catalogue or a process which at the date of the auction was unreasonably expensive or impracticable or likely to have caused damage to the Lot. Furthermore, you should note that this refund can be obtained only if the following conditions are met:  
5.13.1.1 you must notify us in writing, within seven days of the receipt of the Lot(s), that in your view the Lot concerned is a Forgery;  
5.13.1.2 you must then return the item to us within fourteen days from receipt of the Lot(s), in the same condition as at the auction date; and  
5.13.1.3 as soon as possible following return of the Lot, you must produce evidence satisfactory to us that the Lot is a Forgery and that you are able to transfer good title to us, free from any third party claims.  
5.13.1.4 you must provide to us all evidence obtained by you that a Lot is a Forgery no later than 7 days after you receive such evidence.  
5.13.2 In no circumstances shall we be required to pay you any more than the amount paid by you for the Lot concerned and you shall have no claim for interest.  
5.13.3 The benefit of this guarantee is not capable of being transferred, and is solely for the benefit of the person to whom the original invoice was made out by us in respect of the Lot when sold and who, since the sale, has remained the owner of the Lot without disposing of any interest in it to any third party.  
5.13.4 We shall be entitled to rely on any scientific or other process to establish that the Lot is not a Forgery, whether or not such process was used or in use at the date of the auction.

## 6 LIABILITY

Nothing in these Terms and Conditions limits or excludes our liability for:

- 6.1 death or personal injury resulting from negligence; or
- 6.2 any damage or liability incurred by you as a result of our fraud or fraudulent misrepresentation.

## 7 USE OF YOUR PERSONAL INFORMATION

7.1 We will use the personal information you provide to us as set out in our privacy notice (available at <https://spink.com/privacy-policy>) and in particular to:

- 7.1.1 process the bids you make on Lots (whether successful or otherwise) and other auction related services we provide;
  - 7.1.2 process your payment relating to a successful purchase of a Lot;
  - 7.1.3 arrange for delivery of any Lot you purchase, which will include passing your details to shipping providers and, on overseas deliveries, to customs where they make enquiries regarding the Lot;
  - 7.1.4 inform you about similar products or services that we provide, but you may stop receiving these at any time by contacting us.
- 7.2 In accordance with clause 4.2, we may pass your information to credit reference agencies in order to obtain credit checks from them, and they may keep a record of any search that they do.
- 7.3 In accordance with clause 5.11, where you default on making payment for a Lot in accordance with these terms and conditions we may disclose details of such default to other auctioneers and live bidding platforms.
- 7.4 We are also working closely with third parties (including, for example, other auctioneers and live bidding platforms) and may receive information about you from them.
- 7.5 Where you provide us with personal information about other individuals, you must ensure that your provision of that information is compliant with applicable data protection law.

## 8 COPYRIGHT

- 8.1 We shall have the right (on a non-exclusive basis) to photograph, video or otherwise produce an image of the Lot. All rights in such an image will belong to us, and we shall have the right to use it in whatever way we see fit.
- 8.2 The copyright in all images, illustrations and written material relating to a Lot is and shall remain at all times our property and we shall have the right to use it in whatever way we see fit. You shall not use or allow anyone else to use such images, illustrations or written material without our prior written consent.

## 9 VAT

You shall give us all relevant information about your VAT status and that of the Lot to ensure that the correct information is printed in the catalogues. Once printed, the information cannot be changed. If we incur any unforeseen cost or expense as a result of the information being incorrect, you will reimburse to us on demand the full amount incurred.

## 10 NOTICES

All notices given under these Terms and Conditions may be served personally, sent by 1st class post, or faxed to the address given to the sender by the other party. Any notice sent by post will be deemed to have been received on the second working day after posting or, if the addressee is overseas, on the fifth working day after posting. Any notice sent by fax or served personally will be deemed to be delivered on the first working day following despatch.

## 11 ADDITIONAL PROVISIONS

The following provisions of this clause 11 shall apply only if you are acting for the purposes of your business.

### 11.1 Limitation of Liability

Subject to clause 6, we shall not be liable, whether in tort (including for negligence) or breach of statutory duty, contract, misrepresentation or otherwise for any:

- 11.1.1 loss of profits, loss of business, depletion of goodwill and/or similar losses, loss of anticipated savings, loss of goods, loss of contract, loss of use, loss of corruption of data or information; or
- 11.1.2 any special, indirect, consequential or pure economic loss, costs, damages, charges or expenses.

### 11.2 Severability

If any part of these Terms and Condition is found by any court to be invalid, illegal or unenforceable, that part may be discounted and the rest of the conditions shall continue to be valid and enforceable to the fullest extent permitted by law.

### 11.3 Force majeure

We shall have no liability to you if we are prevented from, or delayed in performing, our obligations under these Terms and Conditions or from carrying on our business by acts, events, omissions or accidents beyond our reasonable control, including (without limitation) strikes, lock-outs or other industrial disputes (whether involving our workforce or the workforce of any other party), failure of a utility service or transport network, act of God, war, riot, civil commotion, malicious damage, compliance with any law or governmental order, rule, regulation or direction, accident, breakdown of plant or machinery, fire, flood, storm or default of suppliers or subcontractors.

## 11.4 Waiver

11.4.1 A waiver of any right under these Terms and Conditions is only effective if it is in writing and it applies only to the circumstances for which it is given. No failure or delay by a party in exercising any right or remedy under these Terms and Conditions or by law shall constitute a waiver of that (or any other) right or remedy, nor preclude or restrict its further exercise. No single or partial exercise of such right or remedy shall preclude or restrict the further exercise of that (or any other) right or remedy.

11.4.2 Unless specifically provided otherwise, rights arising under these Terms and Conditions are cumulative and do not exclude rights provided by law.

## 11.5 Law and Jurisdiction

11.5.1 These Terms and Conditions and any dispute or claim arising out of or in connection with them or their subject matter, shall be governed by, and construed in accordance with, the law of England and Wales.

11.5.2 The parties irrevocably agree that the courts of England and Wales shall have exclusive jurisdiction to settle any dispute or claim that arises out of, or in connection with, Terms and Conditions or their subject matter.

---

## Postal Charges

### Prices for all items including postage and packaging

Invoice Value	UK	EU	Rest of the World
Up to £1,500	£12	£18	£25
Up to £10,000	£20	£40	£50
Above £10,001	£30	£60	£75

Shipments of more than 2kg or volumetric measurement of more than 2kg have to be sent by courier. Certain countries may incur extra charge when courier services are required by our insurance policy. For lots sent by courier please contact [Auctionteam@spink.com](mailto:Auctionteam@spink.com) for calculation of any further relevant cost in addition to the above charges.

## Value Added Tax (VAT)

### Charging of (VAT) at Auction

The information shown on this page sets out the way in which Spink intends to account for VAT.

#### i. Auctioneers' Margin Scheme

1. Where possible, we will offer Lots for sale under the Auctioneers' Margin Scheme. Such Lots can be identified by the absence of any VAT symbol next to the Lot number in the catalogue and will not be subject to VAT on the Hammer Price.
2. Where Lots are sold using the Auctioneers' Margin Scheme to UK VAT-registered businesses, the VAT on Buyers' Premium is not recoverable as input tax. Upon request on sale day, we will issue invoices that show VAT separately on both the Hammer Price and the Buyer's Premium. This will enable VAT-registered businesses to recover the VAT charged as input tax, subject to the normal rules for recovering input tax.

#### ii. Zero-Rated Lots

Limited Categories of goods, such as books, are Zero-rated (o) for VAT in the United Kingdom. Such Lots are offered under the Auctioneers' Margin Scheme. In these circumstances no VAT will be added to the Buyer's premium.

#### iii. Daggedged Lots

Lots which are Daggedged (†) in the catalogue are subject to VAT at 20% on both the Hammer Price and the Buyer's Premium.

#### iv. Imported and Omega Lots

Lots which are marked (x) in the catalogue are subject to VAT at 5% on the Hammer price plus 20% on the Buyer's premium. Lots which bear the Omega symbol (Ω) are subject to VAT at 20% on the Hammer Price and on the Buyer's Premium. This VAT is payable on items imported from outside the EU. In these cases we have used a temporary importation procedure, which in effect means that the point of importation is deferred until the Lot has been sold. At this point the Buyer is treated as the importer and is liable to pay the import VAT due. We will collect the VAT from you and pay it to HM Customs and Excise on your behalf.

#### v. Investment Gold Lots

Lots marked (g) in the catalogue are exempt from VAT on the Hammer Price and are subject to VAT at 20% on the Buyer's Premium. A refund of VAT charged on the Buyer's Premium can also be made on receipt of proof of business as a collectibles dealer outside of the EU.

# SPINK

LONDON

1666

## SALE CALENDAR 2019/2020

### STAMPS

11 January	The Treaty Ports of the Shanghai Postal System - Part IV	Hong Kong	20018
12 January	Fine Stamps of China and Hong Kong	Hong Kong	CSS46
17-31 January	Stamps and Covers of the World e-Auction	London	20112
28 January	The Freshwater Collection	New York	172
29 January	The 'Lionheart' Collection of Great Britain and British Empire - Part XI	London	20011
29-30 January	The Philatelic Collectors' Series Sale	London	20010
29 January	The Philatelic Collectors' Series Sale	New York	173
18 March	"Dubois" British Commonwealth Collection of Stamps and Covers	London	20024

### COINS

3-12 December	World Coins e-Auction	London	19057
10 December	Coins and Commemorative Medals: Winter Auction	London	19007
4/5 January	Banknotes, Bonds & Shares and Coins of China and Hong Kong	Hong Kong	CSS45
19 January	The Numismatic Collector's Series at NY INC, Grand Hyatt	New York	355
20-30 January	The Numismatic Collector's Series e-Auction	New York	356
3-10 February	Spink Numismatic e-Circulars	London	20121
24-25 March	Coins and Commemorative Medals: Spring Auction	London	20004
25-26 March	Banknotes, Bonds & Shares and Coins of China and Hong Kong	Hong Kong	CSS48

### BANKNOTES

3 January	Prof. Yih-Tzong Hsu Prestige Chinese Banknotes Collection	Hong Kong	20007
3/4 January	Banknotes, Bonds & Shares and Coins of China and Hong Kong	Hong Kong	CSS45
17 January	World Banknotes at NY INC, Grand Hyatt	New York	354
19 January	The Numismatic Collector's Series at NY INC, Grand Hyatt	New York	355
20-30 January	The Numismatic Collector's Series e-Auction	New York	356
21 January	The Omar Waddington Collection of Banknotes	New York	358
12 February	The Bank of Scotland Charity Auction	London	20028
25-26 March	Banknotes, Bonds & Shares and Coins of China and Hong Kong	Hong Kong	CSS48

### MEDALS

4/5 January	Banknotes, Bonds & Shares and Coins of China and Hong Kong	Hong Kong	CSS45
19 January	The Numismatic Collector's Series at NY INC, Grand Hyatt	New York	355
20-30 January	The Numismatic Collector's Series e-Auction	New York	356

### BONDS & SHARES

9-22 January	Bonds and Share Certificates of the World e-Auction	London	20016
5-18 February	Stocks and Bonds of the United States of America e-Auction	London	20117
4/5 January	Banknotes, Bonds & Shares and Coins of China and Hong Kong	Hong Kong	CSS45
19 January	The Numismatic Collector's Series at NY INC, Grand Hyatt	New York	355
25-26 March	Banknotes, Bonds & Shares and Coins of China and Hong Kong	Hong Kong	CSS48

### HISTORICAL DOCUMENTS

23-30 January	Autographs and Documents e-Auction	New York	352
---------------	------------------------------------	----------	-----

### LIFESTYLE COLLECTABLES

7-17 December	Fine Whisky & Rum e-Auction	Hong Kong	SFW33
10-20 December	Luxury Handbags and Accessories e-Auction	Hong Kong	SHA04
16-27 January	A Rare Collection of Early Cutlery, Personal Implements, Measuring Devices and Scientific Instruments. Property of a Gentleman	London	20020

The above sale dates are subject to change

Spink offers the following services:

- VALUATIONS FOR INSURANCE AND PROBATE FOR INDIVIDUAL ITEMS OR WHOLE COLLECTIONS -
- SALES ON A COMMISSION BASIS EITHER OF INDIVIDUAL PIECES OR WHOLE COLLECTIONS -









BY APPOINTMENT TO  
HER MAJESTY THE QUEEN  
HOUSE OF COMMONS  
SPINK & SONS LTD, LONDON



BY APPOINTMENT TO  
HIS MAJESTY THE KING  
HOUSE OF COMMONS  
SPINK & SONS LTD, LONDON

# SPINK

WHERE HISTORY IS VALUED

FOUNDED  
1666

STAMPS COINS BANKNOTES MEDALS BONDS & SHARES AUTOGRAPHS BOOKS  
WINE & SPIRITS HANDBAGS COLLECTIONS ADVISORY SERVICES SPECIAL COMMISSIONS

69 Southampton Row, Bloomsbury, London WC1B 4ET  
www.spink.com