

BRITISH EMPIRE
23 NOVEMBER 1973



Stanley Gibbons Auctions

London

Estimated Values

shown in the right-hand columns indicate the prices lots are expected to realise.

Les Prix d' Estimation

qui se trouvent dans les colonnes à droit montrent les prix que les lots vont probablement produire.

Die Schätzwerte

die in der rechten Rubrik angegeben sind, zeigen die Preise an welche die Lose wahrscheinlich erzielen werden.

I Valori Preventivi

che figurano nella colonna destra indicano i prezzi che si prevede atterranno i lotti.

Los Valores Estimativos

que se encuentran en la columna de la derecha son los precios que se espera obtener por cada lote.

Catalogue References

are to the Stanley Gibbons' catalogues, unless otherwise stated.

Les Références aux catalogues

sont données d'après les catalogues Stanley Gibbons, sauf indications du contraire.

Katalognummern

sind von den Stanley Gibbons-Katalogen entnommen, andere Katalognummern sind immer besonders bezeichnet.

Key to symbols and abbreviations**Explication des signes et abbréviations****Tabelle der Zeichen und Abkürzungen**

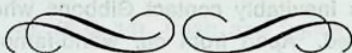
- ★ unused (with or without gum) : non-oblitéré (avec ou sans gomme) : ungestempelt (mit oder ohne Gummi)
-
- used : oblitéré : gestempelt ✈ Airpost : Poste Aérienne : Luftpost
-
- ☐ on entire : sur entire : auf Ganzsache P Proof : Épreuve : Probedruck
-
- S Specimen : Specimen : Vorlagestück △ on piece : sur fragment : Briefstück
-
- R Reprint : Réimpression : Neudruck
-
- o.g. original gum (hinged) : gomme originale (avec charnière) : Original-Gummi (mit Falz)
-
- c.d.s. circular datestamp : cachet à date : Ortsstempel
-
- S.L. Special Lot (available for inspection in the Auction Room on request) : Lot Spécial (pour inspection dans la salle des ventes, sur demande) : Sonderlos (Besichtigung im Versteigerungsraum nur auf Verlangen)

Sale 5268

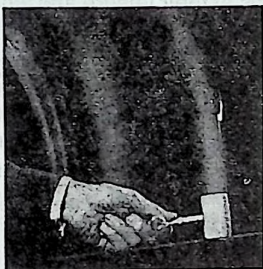
BRITISH EMPIRE

23 NOVEMBER 1973

at 14.00



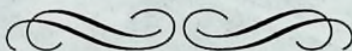
Offered on the instructions of a continental philatelist



VIEWING ARRANGEMENTS

19-20-21 NOVEMBER : 10.00 - 16.00 each day

23 NOVEMBER : 10.00 - 13.00



STANLEY GIBBONS AUCTIONS LTD.

DRURY HOUSE, RUSSELL STREET, LONDON WC2B 5HD, ENGLAND

Telephone: 01-836 7941

Telex: 28883

Telegrams & Cables: 'Philators London WC2'

(Coloured illustrations of stamps in this catalogue are as accurate as possible but are naturally not always identical to the actual stamps)

PRICE £1.00

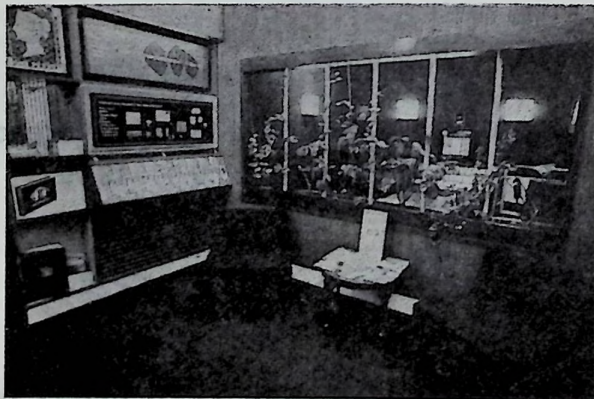
Romano House

for fine Classics

Very many of the exceptional items offered in this collection have been handled by Stanley Gibbons Ltd.

In fact, there are very few of the world's leading collections that do not contain stamps purchased from us. A stock of rarities that is unrivalled is always available for your inspection — that is why all discerning philatelists inevitably contact Gibbons when perfection is required. Apart from our world-famous shop at 391 Strand, we have now opened The Specialist and Rare Stamp Department at Romano House, 399 Strand, London W.C.2., where interested customers can browse over stamps at their leisure and where a warm welcome always awaits you by the senior sales staff, each a specialist in his own field.

Gibbons can also provide the opportunity to survey their stock in your home; and it does not matter if you live in Manchester or Minnesota, arrangements can be made for you to obtain the benefits of this unrivalled service.



Postal enquiries to

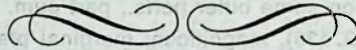
STANLEY GIBBONS LTD.

391 Strand, London WC2R 0LX

Telephone: 01-836 9707

BRITISH EMPIRE

Friday, 23 November 1973 at 2 p.m.



BAHAMAS

Lot		Estimated Value
1	○ 1859 , <i>Thick paper</i> , 1d. reddish lake (S.G. 1), very fine example of this rarity, large even margins, light cancel (Plate 1)	£150
2	★ — <i>Thin paper</i> , 1d. dull lake (S.G. 2), marginal pair, fresh o.g., fine	£10
3	★ 1861 Perf. 14 to 16 , 1d. (S.G. 4), fresh unused, fine (Plate 1)	£15
4	○ — 1d. (S.G. 4), equally fine and fresh, unused (Plate 1)	£15
5	★ 1862, Perf. 11½ , 1d. carmine-lake (S.G. 8), good colour, bright aniline shade, o.g. (Plate 1)	£30
6	○ — <i>Compound Perf.</i> , 4d. (S.G. 14), fresh and lightly cancelled, very rare (Plate 1)	£50
7	○ — <i>Compound Perf.</i> , 6d. (S.G. 15), superb, good colour, neat central cancel (Plate 1)	£80
8	★ 1863-80, Perf. 12½ , 4d. dull rose, bright rose, 6d. lilac, deep violet, violet (S.G. 26, 27, 29, 30, 31), fresh shades, few slight discolorations, fine o.g. or part o.g., also S.G. 39 used	£20
9	★ — <i>Perf. 14</i> , 1d. scarlet (S.G. 34), the rare 'aniline' shade, fresh, well centred, large part o.g. (Plate 1)	£70
10	★ — <i>Perf. 14</i> , 4d. bright rose (S.G. 35), well centred, good colour, part o.g., fresh (Plate 1)	£50
11	★ 1882, Perf. 12 , 4d. (S.G. 41), rich colour, gum creases, fresh o.g., also marginal o.g. pair of the 1d. (S.G. 40) (Plate 1)	£30
12	★ — <i>Perf. 14</i> , 1d., 4d., 6d. (S.G. 42-44), very fresh, unused or part o.g. (Plate 1)	£26
13	★ 1883 , 4d. on 6d. (S.G. 45), good colour, fine and fresh, part o.g. (Plate 1)	£46
14	★ ○ 1884-98 , 1d. (3), 2½d., 4d., 6d., 5/-, £1 (thin), fresh, unused or part o.g., also 2½d. (2) used and 1901-10 both 1d's o.g. 12	£20
15	★ 1902 , 1d. to £1 (S.G. 60-68), o.g. or part o.g. except 6d. used, two shades of the £1 (both with green colour run, one with thin), 1903 to 3/- and 1906 to 6d., o.g. 17	£60

BRITISH GUIANA

16	○ 1852 , 1c. black on magenta (S.G. 9), rich colour, large margins, light horizontal crease, cancelled BERBICE/SP 17/1853 (Plate 3)	£200
----	--	------

BRITISH HONDURAS

17	★ 1905-07 , 1c., 2c., 5c., 25c., 50c., \$2, \$5, (S.G. btwn. 84-93), fresh, \$2 with faint green colour run, o.g. or large part o.g. (Plate 1)	£26
----	---	-----

CANADA

18	○ 1857 , 7½d. deep yellow-green (S.G. 22a), clear to large margins, good colour, trace of faint m/s N.W. corner, light numeral cancel (Plate 1)	£110
19	★ 1858-59 , 6d. brownish grey (S.G. 27), fresh example with some original gum, rich colour, one or two perfs. a little short but much above average (Plate 1)	£250

Canada continued

Lot		Estimated Value
20	★ 1868-71, Ottawa printing $\frac{1}{2}$ c. black (S.G. 53), block of fifteen (5×3), excellent colour, slight toning on some outer perfs., part gum, scarce multiple	£50
21	★ 1897, Jubilee \$1 (S.G. 136), magnificent marginal plate number block of six, rich colour, few very faint gum tonings, perfs. weak or split mainly in margin and lightly strengthened, stamps full o.g., choice piece (Plate 2)	£210
22	★ — \$2 (S.G. 137), good colour, heavy hinge remainders and wrinkles, part o.g. (Plate 1)	£46
23	★ — \$3 (S.G. 138), similar condition, fresh, part o.g. (Plate 1)	£60
24	★ — \$4 (S.G. 139), similar condition, fine, part o.g. (Plate 1)	£50
25	★ — \$5 (S.G. 140), good colour, few perfs. a little discoloured at top, fresh, part o.g. (Plate 1)	£50

CAPE OF GOOD HOPE — MAFEKING

26	☒ 1900, Bechuanaland O.H.M.S. blue envelope addressed to <i>Tpr. Samuel Sweet/C Troop D Squadron/Protectorate Regiment, B.S.A. Fort/Mafeking</i> , franked with six adhesives of the 'Siege' issues comprising 'BECHUANALAND PROTECTORATE' 1d. on $\frac{1}{2}$ d. (2), 6d. on 2d., 1s. on 2d., 'Goodyear' 1d., 'Baden Powell' 3d. and Cape 1d. Tied by MAFEKING/MY81/900 cancels, probably the most spectacular item of the period (Plate 5)	£950
----	---	------

CAYMAN ISLANDS

27	★ 1907, 4d. to 5/- (S.G. 13 to 16) set in scarce blocks of four, hinge remainders, fresh, part o.g. (Plate 2)	£125
28	★ 1908, 1/-, 10/- (S.G. 35, 36), fresh o.g. (Plate 1)	£26

CYPRUS

29	★ 1880, $\frac{1}{2}$ d. (S.G. 1) Plate 12, KP, and Plate 13, SA, both fresh unused	£6
30	★ — $\frac{1}{2}$ d. (S.G. 1) Plate 15, MA-NB, fresh block of four, part o.g.	£16
31	★ — $\frac{1}{2}$ d. (S.G. 1) Plate 15, AW-GX, vertical block of fourteen with imperf. margin, fresh unused	£50
32	★ — 1d. (S.G. 2) Plate 193 and Plate 196, AD-BI, the two rare plates in magnificent matched marginal blocks of twelve with inscription, extremely fresh, few split perfs. which have been strengthened, remarkably fine for such large multiples, practically full original gum (Plate 2)	£2000
33	★ — 1d. (S.G. 2) Plate 193, PF, very fresh, part o.g. (Plate 1)	£70
34	★ — 1d. (S.G. 2) Plate 196, PF, fine and fresh unused, fine companion to the above (Plate 1)	£70
35	★ — 1d. (S.G. 2) Plate 196, OE-OF, fresh, part o.g. pair, good colour, fine (Plate 1)	£150
36	★ — 1d. (S.G. 2) Plate 216, GA-JE, marginal block of twenty with inscription and part ornament, fresh and fine o.g., choice piece	£20
37	★ — 1d. (S.G. 2), range of plates comprising Plates 174, 181, 201 (2), 205, 208, 215, 216, 217, 218 and 220, very fresh, unused or part o.g.	£60
38	★ — 1d. 'ovpt. double' (S.G. 2a) Plate 208, QC, fresh, one blind perf., fine, part o.g., rare (Plate 1)	£110
39	★ — $2\frac{1}{2}$ d. Plate 14 (2), Plate 15 (2), 4d., 6d., 1/- (2), one 1/- with slight colour run, fresh unused	£50

Cyprus continued

Lot		Estimated Value
40	★ 1880, 6d. (S.G. 5), very rare complete sheet of twenty PA-TD, hinge remainders, fresh and fine o.g., exhibition piece (Plate 2)	£350
41	★ 1881, Large HALF-PENNY ½d. on 1d. (S.G. 7) Plates 174 to 220, complete set of ten plates, fresh unused or part o.g. (Plate 217 used) with additional copies of Plates 181, 216 and 218	£70
42	★ — ½d. on 1d. (S.G. 7) Plate 218, DC-ED, fresh, o.g. block of four (Plate 2)	£50
43	★ — ½d. on 1d. (S.G. 7) Plate 218, EK-FL, block of four, fresh o.g.	£50
44	★ — ½d. on 1d. (S.G. 7) Plate 218, GE-HF, block of four, fine o.g.	£50
45	★ — Medium HALF-PENNY, ½d. on 1d. (S.G. 8) Plate 201, AD-BF, marginal inscription block of six, fresh unused	£26
46	★ — ½d. on 1d. (S.G. 8) Plate 201, HJ-IL, block of six, fresh o.g.	£26
47	★ — ½d. on 1d. (S.G. 8) Plate 201, JA-KC, block of six, fine o.g.	£26
48	★ — ½d. on 1d. (S.G. 8) Plate 201, KC-LF, block of eight, fine unused (Plate 2)	£50
49	★ — ½d. on 1d. (S.G. 8) Plate 201, AE-FI, rare marginal inscription block of thirty, some split perfs., good colour and preservation for such a piece	£175
50	★ — ½d. on 1d. (S.G. 8) Plate 201, single EE and block of four LH-MI, also single Plate 216, KC, fresh, unused or part o.g.	£26
51	★ ○ — Small HALF-PENNY, ½d. on 1d. (S.G. 9) Plates 205, 217, 218, fresh unused, Plate 215 fine used	£15
52	★ — ½d. on 1d. (S.G. 9) Plate 215, EE-FF, superb unused block of four	£8
53	★ — ½d. on 1d. (S.G. 9) Plate 215, KA-OB, marginal block of ten with inscription and part ornament, small stain at foot, fresh o.g.	£22
54	★ — ½d. on 1d. 'surch. double' Plate 205, (S.G. 9aa) KA-KB, marginal pair with inscription and part ornament, fresh unused (Plate 1)	£50
55	★ — ½d. on 1d. 'surch. double' Plate 215 (S.G. 9ab) QB-QC, fresh o.g. pair, slight crease, fine (Plate 1)	£30
56	★ — ½d. on 1d. 'surch. treble' Plate 215 (S.G. 96a) KB, fresh, part o.g. (Plate 1)	£26
57	★ — 30 paras on 1d. (S.G. 10) Plates 201, 216, 217 and 220, fresh unused	£20
58	★ — 30 paras on 1d. 'surch. double, one inverted' Plate 220 (S.G. 10aa), good colour, clear impressions, fresh unused (Plate 1)	£44
59	○ 1881 Die I, 6pi. (S.G. 20), good colour, one or two perfs. a little short at foot, lightly cancelled (Plate 1)	£20
60	○ 1882, 30 paras on 1pi. (S.G. 23), rare block of four, slight corner creases, lightly cancelled, very fine (Plate 2)	£60
61	○ — 30 paras on 1pi. (S.G. 23), colourful and rare block of eighteen with m/s and red LARNACA cancels, most attractive (Plate 2)	£70
62	★ 1882-92, surcharged, ½pi. type 8 (S.G. 25), single and block of four, both slightly stained at foot, o.g., also o.g. single type 9 (S.G. 27) o.g.	£15
63	○ — Surcharged, ½pi. type 9, 'large 1 at left' (S.G. 26a), very fine used (Plate 1)	£14
64	○ — Surcharged, ½pi. type 9, 'small 1 at right' (S.G. 26b) fine used (Plate 1)	£18
65	★ ○ — Unsurcharged, Die I, ½pi. to 12pi., unused or used, one of each value including 4pi. pale olive-green, o.g., also 4pi. deep shade, used 7	£15
66	☒ — Unsurcharged, Die I, 1pi. carmine used on 2pi. registered envelope from PAPHO/AU 12/89, tied by '981', oval registered in red alongside	£30

Cyprus continued

Lot		Estimated Value
67	★ ○ 1882-92, <i>Unsurcharged, Die II</i> , ½pi., 30pa., 1pi., 2pi., 4pi. (both shades) and 12pi., part o.g. or used, also 1894 12pi. (S.G. 49), o.g. block of four	£12
68	★ 1903, ½pi. to 45pi. (S.G. 52 to 61), set of ten in plate blocks of four, fresh o.g. (Plate 4)	£275
69	★ 1904-10, 5pa. to 45pi. (S.G. 61a to 71), complete set of fourteen in marginal blocks of four, all with plate number except 4pi., fresh o.g. (Plate 4)	£80
70	★ 1912, 10pa. to 45pi. (S.G. 73-84), complete set of fifteen with all shades, fine o.g.	£12
71	★ 1921-23, 10pa. to 45pi. (S.G. 85-99), set of thirteen less 30pa. second shade and 18pi., fresh o.g.	£20
72	★ — 10/- (S.G. 100), well centred, superb o.g. (Plate 1)	£40
73	★ — £1 (S.G. 101), brilliant corner copy, superb o.g. (Plate 3)	£180
74	★ 1924, ½pi. to 45pi., £1 (S.G. 102-116), fresh o.g.	£24
75	★ — £1 (S.G. 102), marginal, superb o.g.	£22
76	★ — £5 (S.G. 117a), well centred, a few perfs. fractionally short at foot, superb o.g. (Plate—Back Cover)	£285
77	★ ○ Collection of K.G.VI and Q.E.II on leaves with 1938, 1955 and 1960 sets or values to £1, o.g. or used, fairly complete from 1960 to 1965 117	£30

DOMINICA

78	★ 1903, 5/- (S.G. 36), corner pair with plate number, fresh o.g. (Plate 3)	£40
79	★ ○ 1907-08, ½d. to 5/- (S.G. 37-46), 2½d. used, others fine o.g. or large part o.g., also 1903 o.g. set to 2/- (less 6d.)	£26

FALKLAND ISLANDS

80	★ 1878-79, 1d., 4d., 6d., 1/- (S.G. 1-4), fresh set, 6d. with slight staining, fresh o.g. or part o.g. (Plate 3)	£70
81	★ — 4d. on <i>watermarked paper</i> (S.G. 2a), good colour, short corner perf., fresh and fine, large part o.g. (Plate 3)	£50
82	★ ○ 1883-1902, excellent collection of this issue with many scarce shades, blocks of 4 (2) and 6 of the 1d., 6d. block of 4 etc., also 1885-91 1d. o.g. single and block of 4, 4d. used single. Fine basis for study 48	£90
83	★ 1891 <i>Surcharge</i> , ½d. on half 1d. claret (S.G. 38), fresh, part o.g.	£20
84	★ — ½d. on half 1d. claret, <i>unsevered pair</i> (S.G. 38a), slight tones, fresh, part o.g. (Plate 3)	£50
85	○ — ½d. on half 1d. red-brown (S.G. 39), fine used	£10
86	★ — ½d. on half 1d. orange red-brown, <i>unsevered pair</i> (S.G. 40a), fresh, part o.g. (Plate 3)	£60
87	★ 1898, 2/6 and 5/- (S.G. 41, 42), fresh, large part o.g., 2/6 with slight perf. discoloration, fine	£16
88	★ 1904-12, ½d. to 1/- (S.G. btwn. 43-55), range with shades incl. ½d. (3), 1d. (4), 2½d. (3), etc., also 1d. wmk. sideways, three used, rest o.g. 15	£20
89	★ — 3/- green, deep green, 5/- (S.G. 56-58), fresh o.g.	£28
90	★ — 5/- (S.G. 58), fresh block of four, full o.g. (Plate 4)	£70

FIJI

Lot		Estimated Value
91	★ 1903, ½d. to £1 (S.G. 104-114), set of 11, fresh, large part o.g.	£40
92	★ — £1 (S.G. 114), fine and fresh, o.g. (Plate 3)	£38
93	★ 1906-12, £1 (S.G. 204), fresh, large part o.g.	£20
94	★ — £1 (S.G. 204), fine, a few short perfs., large part o.g.	£18

GAMBIA

95	★ 1909, ½d. to 3/- (S.G. 72-85), fresh set, fine o.g.	£12
----	---	-----

GIBRALTAR

96	★ 1889-95, 10c. <i>valve omitted</i> (S.G. 23b), beautiful marginal example of this great rarity, slight gum wrinkles, fresh and fine o.g. (Plate — Front Cover)	£975
97	★ 1903, 2/- (S.G. 52), plate block of four, fine o.g.	£30
98	★ — 4/- (S.G. 53), plate block of four, fine o.g.	£30
99	★ — 8/- (S.G. 54), plate block of four, fine o.g.	£36
100	★ — 8/- and £1 (S.G. 54, 55), fresh, hinge remainders, fine o.g. (Plate 3)	£65
101	★ 1904-7, 4/- (S.G. 63), slight tones, o.g.	£8
102	★ — £1 (S.G. 64), fresh, o.g. (Plate 3)	£60
103	★ — £1 (S.G. 64), fine, one or two perfs. a little short, o.g. (Plate 3)	£55
104	★ — £1 (S.G. 64), speck on face, large part o.g. (Plate 3)	£50
105	★ 1907-11, 8/- (S.G. 74) fresh, hinge remainders, fine, large part o.g. (Plate 3)	£30
106	★ 1912-24, £1 (S.G. 85), plate block of four, mounted mainly in margins, fresh o.g. (Plate 4)	£75
107	★ 1925-52, 2/6 and £1 (S.G. 104, 107), each in a fresh o.g. plate block of four (Plate 4)	£90

GOLD COAST

108	★ 1875, 1d. (S.G. 1), very rare marginal block of four, good colour, fresh, part o.g. (Plate — Back Cover)	£200
109	★ ○ 1889-94, 5/-, 10/-, 20/- red (S.G. 22, 23, 25), fine used, also 20/- red o.g.	£18
110	★ — 20/- green and red (S.G. 24), good colour, trace of light surface rubbing, one or two perfs. a trifle short at foot, fresh, part o.g. (Plate 3)	£200
111	★ 1902, ½d. to 20/- (S.G. 38-48), set of eleven, 2/- used, others fresh, part o.g.	£26
112	★ — 20/- (S.G. 48), hinge remainders, part o.g. also 1907-13 set of 11 with shades less 2/-, o.g.	£24

GREAT BRITAIN

113	★ 1870, ½d. Plate 1, TU-TV 'imperf. pair' (S.G. 49a), large margins, fine, large part o.g. (Plate 3)	£100
114	★ 1867-80, 6d. Plate 8, PE-RH (S.G. 109), block of twelve, good colour, fresh, large part o.g. (Plate 4)	£250
115	○ 1887-92, Jubilee 1/- green (S.G. 211), block of 15 (3×5), neatly cancelled	£50
116	★ 1902-10, 5/-, 10/- (S.G. 264, 265), also Somerset House 2/6 (S.G. 315), fresh, o.g. or part o.g.	£34

GRENADA

Lot		Estimated Value
117 ★	1902, ½d. to 10/- (S.G. 57-66) less 5/-, small green colour rub on 10/-, fresh o.g.	£20
118 ★	1904-6, 10/- (S.G. 76), also ½d., 2½d. to 2/-, o.g.	£30

INDIA

119 ★	1854, ½a. <i>Die I</i> , very rare complete sheet of 96 with full margins on three sides, almost complete on fourth, slight water staining at foot just affecting a few impressions on the last row, fine preservation for such a piece	£200
120 ★	1902-11, 3p. to 5r., 15r. (S.G. btwn. 119-146), range with shades, o.g. or part o.g., fresh	19 £20

KENYA

121 ★	1903-04, 5r., 10r. (S.G. 13, 14), fresh, fine, large part o.g.	£26
122 ★	— 50r. (S.G. 16), good colour, slight wrinkles at foot, fine, large part o.g. (Plate 3)	£100
123 ★	1904-07, ½a. to 1r., 10r. (S.G. 17-25, 31), o.g. or large part o.g.	11 £18
124 ★	— 50r. (S.G. 33), well centred, fresh, slight wrinkle, fine o.g. (Plate 3)	£150
125 ★	1912-22, 1c. to 10r. (S.G. 44-58), set with shades incl. 25c. (5) and 75c. (5), fine o.g. or large part o.g., also S.G. 65, 66, 68-71	28 £20
126 ★	— 50r. carmine and green (S.G. 61), one short perf., fresh and fine o.g. (Plate 3)	£70
127 ★	1921-22, 50r. (S.G. 75), good colour, natural paper flaw, a few thinned perfs. at foot and light tones, fine o.g. (Plate 3)	£150
128 ★	1922-27, 1c. to 10/- (S.G. 76-94), set of 21, fine o.g. or large part o.g.	£20
129 ★	— £2 (S.G. 96), fresh, fine, large part o.g. (Plate 5)	£75
130 ★	— £3 (S.G. 97), brilliant colour, fresh o.g. (Plate 5)	£100
131 ★	— £4 (S.G. 98), fresh and very fine o.g. (Plate 5)	£150
132 ★	— £5 (S.G. 99), good colour, two short perfs., fine o.g. (Plate 5)	£190
133 ★	— £10 (S.G. 100), beautiful corner plate number example, superb o.g., pristine (Plate — Back Cover)	£450
134 ★	— £20 (S.G. 101), well centred example of this great rarity, rich colour, one or two perfs. a little short, slight gum creasing, fine and fresh, full o.g. (Plate — Front Cover)	£950

LAGOS

135 ★	1904, 10/- (S.G. 53), fresh, one or two short perfs., fine o.g., also ½d. to 3d., 1/-, 2/6 (Plate 3)	9 £46
-------	--	----------

LEEWARD ISLANDS

136 ★	1902, 2/6 (S.G. 27), block of four, fresh o.g.	£12
-------	--	-----

MALAYA — STRAITS SETTLEMENTS

137 ★	1906-11, \$25 (S.G. 168), good colour, light gum tones, fresh o.g. (Plate 3)	£70
138 ★	— \$25 (S.G. 168), fresh and fine o.g.	£80
139 ★	1912-23, 1c. to \$5 (S.G. btwn. 193a-212b), range with shades incl. scarce, also 1906-11 values to \$2	50 £20
140 ★	— \$100 (S.G. 214), fresh, some slight discoloration around edges, one short perf., large part o.g. (Plate 5)	£150

PLATE 1



1 3 4 5 6 7



9 10 11 EX LOT 12 13 EX 17



18 19 33 34 35



22 23 24 25



28 38 54 55



56 58 59 63 64 72



48
21

EX LOT 27
 6 Pence 2 Shillings 1 Pound
 PRICE: per Label per Row of 4 per Sheet of 40

A	B	C	D
POSTAGE P	POSTAGE P	POSTAGE P	POSTAGE P
CYPRUS	CYPRUS	CYPRUS	CYPRUS
P SIX PENCE A	P SIX PENCE B	P SIX PENCE C	P SIX PENCE D
A	B	C	D
POSTAGE Q	POSTAGE Q	POSTAGE Q	POSTAGE Q
CYPRUS	CYPRUS	CYPRUS	CYPRUS
Q SIX PENCE A	Q SIX PENCE B	Q SIX PENCE C	Q SIX PENCE D
A	B	C	D
POSTAGE R	POSTAGE R	POSTAGE R	POSTAGE R
CYPRUS	CYPRUS	CYPRUS	CYPRUS
R SIX PENCE A	R SIX PENCE B	R SIX PENCE C	R SIX PENCE D
A	B	C	D
POSTAGE S	POSTAGE S	POSTAGE S	POSTAGE S
CYPRUS	CYPRUS	CYPRUS	CYPRUS
S SIX PENCE A	S SIX PENCE B	S SIX PENCE C	S SIX PENCE D
A	B	C	D
POSTAGE T	POSTAGE T	POSTAGE T	POSTAGE T
CYPRUS	CYPRUS	CYPRUS	CYPRUS
T SIX PENCE A	T SIX PENCE B	T SIX PENCE C	T SIX PENCE D

40

POSTAGE 6d

16

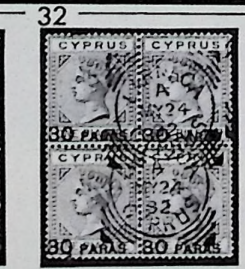


PLATE 3



16



73



78



EX 80

81

84

86

92

110



100



102



103



104



105



113



135

141



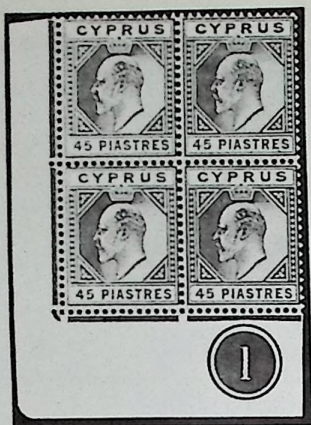
122

124

126

127

137



EX 68



EX 69



90



106



EX 107



181



EX 210



114



129

130

131

132



On Her Majesty's Service.

*Mr. Samuel Suet
C Troop D Squadron
Protectorate Regiment
B. S. A Fort
Mafeking*



26



140



154



155



157



159



160



164



165



169



170



142



145



146



149



150



151



152



158



161



162



163



168

A. B. D. French
London to Paris
 148
Monsieur A. S. Andrews



Handwritten notes and signatures on the left side of the middle section.



per sum
 19 Sept 59
 180
Messrs. Soling's Couriers
Aden



Vertical handwritten number: 695132418312977



171

172

174

175

177



173



176



234



301



178

179

182

183

184



186

187

192

231

232

233



201

203

208

212

213



215

219

EX 243

267



236

237

239

240

242

259



EX 244



251

260

263

264



265

266

271

272



268

274

275



235



257



250



258



261



253

262



230



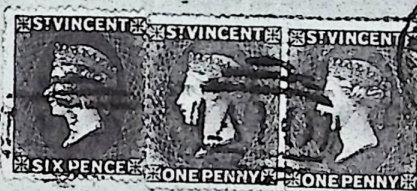
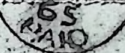
246

Duke de Polignac



247

Duke de Polignac



248



249

Duke de Polignac
N° 10 Place Louis XV
Paris
France





252



255



256



278



287



254



273



288



277 279 280 281 282 283 285



284 286 293 294 298



300 303 304 305 306



307 308 310 311 312 313



314 318 320 321 323 324



325 335 342



330 346



295

327



074

328



347



348



349



024

329



339



302



299

MALTA

Lot	Estimated Value
141 ★ 1904-11, 5/- (S.G. 63), marginal strip of three, fine o.g. (Plate 3)	£30

MAURITIUS

1848 "POST PAID"

142 ○ <i>Earliest impression</i> , 1d. orange-vermilion (S.G. 3), rich impression, beautiful deep colour, slight creasing and minor faults, touched in places, neat central '3' cancel also trace of boxed marking, good appearance (Plate 6)	£250
143 ○ — 2d. deep blue (S.G. 5), large margins, very good colour, slight faults and minor paper imperfections, attractively cancelled '1' in blue (Plate — Back Cover)	£500
144 ★ <i>Early impression</i> , 1d. vermilion (S.G. 6), fresh unused, just clear to large margins, slight restoration, fine and rare (Plate — Back Cover)	£750
145 ○ — 1d. vermilion (S.G. 6), clear to good margins, small faults, light blue cancel, good appearance (Plate 6)	£400
146 ★ — 1d. orange-vermilion (S.G. 7), fresh unused, clear to large margins, slight faults include thins and pinhole etc., good colour, fine appearance (Plate 6)	£250
147 ○ — 1d. orange-vermilion (S.G. 7), enormous margins, slight vertical crease, excellent colour and light '3' cancel (Plate — Back Cover)	£700
148 ☒ — 2d. blue (S.G. 8), <i>position 10</i> , very rare used on outer wrapper from Brun & Fils at Port Louis to Bordeaux endorsed 'per B.B. Green, bound for Cork', adhesive has slight faults incl. crease, tied by 'bars', Mauritius JA 18/1850 despatch, COVE/SHIP LETTER transit in blue, Bordeaux 12 April arrival (Plate 7)	£650
149 ○ <i>Intermediate impression</i> , 1d. dull vermilion (S.G. 11), good to large margins, slight creasing at foot, rich colour, neat <i>target</i> cancel (Plate 6)	£250
150 ○ — 1d. dull vermilion (S.G. 11), very large margins, fresh, rich shade, thinning at top and slight corner crease, '14' cancel centrally placed (Plate 6)	£250
151 ○ — 1d. red (S.G. 12), large margins, some creasing and thinning, smudgy cancel, good colour (Plate 6)	£90
152 ○ — 2d. blue (S.G. 14), rich colour, large margins, natural paper crease prior to printing, faint marginal tone and slight faults, light <i>target</i> cancel (Plate 6)	£175
153 ☒ — 2d. light blue (S.G. 15), large margins, cancelled by '4' on outer letter sheet to Port Louis, Mauritius JA 22/1855 G.P.O. marking alongside, file crease and slight toning, good appearance (Plate 7)	£325
154 ★ <i>Worn impression</i> , 1d. red on bluish (S.G. 18), unused, good colour, slight faults incl. thinning, margins generally good to large (Plate 5)	£50
155 ○ — 1d. red on bluish (S.G. 18), large margins, light diagonal paper crease prior to printing, '12' cancel, slight faults, fine (Plate 5)	£50
156 ☒ — 1d. red on bluish (S.G. 18), pair on part cover to Savanne tied by boxed INLAND, touched in two places, margins generally large, G.P.O. backstamp SP 24/1858 (Plate 7)	£200
157 ○ — 2d. blue on grey (S.G. 20), large even margins, neat <i>target</i> cancel and part m/s, good colour (Plate 5)	£50
158 ○ — 2d. blue on grey 'PENOE' (S.G. 20a), even margins, slight thinning, light '1' cancel leaves variety clear, fine example (Plate 6)	£120

Mauritius continued

Lot		Estimated Value
1848 "Post Paid" continued		
159	★ <i>Latest impression</i> , 1d. red (S.G. 23), trace of <i>double print</i> , large margins, some thinning, fresh unused (Plate 5)	£30
160	○ — 2d. grey-blue (S.G. 25), good colour, small corner repair and thin, clear to large margins, central '2' cancel (Plate 5)	£30
1859 "LAPIROT"		
161	○ <i>Early impression</i> , 2d. deep blue (S.G. 26), good even margins, trace of light vertical crease and two small thins, neat central <i>target</i> cancel (Plate 6)	£250
162	○ — 2d. blue (S.G. 27), large-margined example, good colour, target cancels and part m/s, fine (Plate 6)	£200
163	○ <i>Intermediate impression</i> , 2d. blue (S.G. 28), good colour, slight creasing, large margins, light target cancel (Plate 6)	£110
164	★ <i>Worn impression</i> , 2d. blue (S.G. 29), even margins, two small thins, fresh, unused (Plate 5)	£100
165	★ — 2d. blue (S.G. 29), small margins, slight thins, fresh, unused (Plate 5)	£50
166	○ — 2d. blue (S.G. 29), fine marginal strip of three, clear to large margins, one or two pinholes and minor faults, PAID cancels in black and part of red arrival (possibly Paris) in red, choice piece (Plate 7)	£165
1859 "SHERWIN"		
167	★ 2d. deep blue (S.G. 30), beautiful and very rare unused example in a brilliant deep shade, just touched at right, margins large other sides, slight thinning, exceptional. <i>Ex King Carol of Roumania</i> (Plate — Back Cover)	£1250
168	○ 2d. deep blue (S.G. 30), good to large margins, neatly cancelled, very fine (Plate 6)	£300
1859 "DARDENNE"		
169	○ 1d. deep red (S.G. 31), rich colour, large margins, neat cancel, repaired at right (Plate 5)	£30
170	★ 1d. red (S.G. 31a), unused, touched in two places, fresh and very fine (Plate 5)	£120
171	○ 1d. red (S.G. 31a), good to very large margins, rich colour, neat cancel (Plate 8)	£120
172	★ 1d. dull vermilion (S.G. 32), unused pair with part of 'Wiggins Teape' watermark, just touched at one point, margins clear to good, vertical crease and thin, fine and fresh (Plate 8)	£125
173	○ 1d. dull vermilion (S.G. 32), large-margined vertical pair with part 'Wiggins Teape' watermark, small thin, lightly cancelled, very fine (Plate 8)	£175
174	○ 2d. slate-blue (S.G. 33), even margins, part of boxed cancel, small corner repair, good appearance (Plate 8)	£30
175	○ 2d. pale blue (S.G. 34), large margins, slight thinning, good colour and light cancel (Plate 8)	£40
176	△ 2d. pale blue (S.G. 34), very fine vertical pair — superb on piece, neatly tied by French mark in red (Plate 8)	£135
177	○ 2d. blue ' <i>retouch on neck</i> ' (S.G. 34b), clear to large margins, light target cancel leaves variety clear (Plate 8)	£60

Mauritius continued

"BRITANNIA" TYPES

Lot		Estimated Value
178	★ 1858-59, (4d.) green (S.G. 36), deep shade, clear to large margins, possibly lightly toned at right, part o.g. (Plate 8)	£26
179	★ — (4d.) green (S.G. 36), good to large margins, fine, part o.g. (Plate 8)	£26
180	☒ — (4d.) green (S.G. 36), strip of three and single on envelope to Aden, margins vary but generally good, marks include PAID and oval PACKET LETTER/MAURITIUS/AP 14 1859, full of character. Ex Dale-Lichtenstein (Plate 7)	£200
181	○ — (6d.) vermilion (S.G. 37), vertical marginal strip of three, small cut at top, crease between and other crease but very good colour, large margins, light cancels (Plate 4)	£50
182	★ — (9d.) dull magenta (S.G. 38), unused pair, good colour, clear to large margins (Plate 8)	£50
183	★ 1859, 6d. blue (S.G. 42), large margins, fresh unused (Plate 8)	£30
184	★ — 6d. blue (S.G. 42), unused, slight toning, large margins (Plate 8)	£26
185	☒ — 6d. blue (S.G. 42), pair together with 1860 4d. on blue outer wrapper to Marseilles, cancelled 'B53', despatched SP 6/61 arriving 5 OCT., fine (Plate 7)	£60
186	★ — 1/- vermilion (S.G. 43), large margins, superb unused (Plate 8)	£60
187	★ 1861, 1/- yellow-green (S.G. 45), unused, clear to large margins, fresh, part o.g., also pair of the 6d., slight gum thins, part o.g. (Plate 8)	£28
188	★ 1862, 6d. slate (S.G. 46), fresh, block of six, slight tones, fine o.g.	£20
LATER ISSUES		
189	○ 1860-63, No Wmk. 1d., 2d., 4d., 6d. slate, 9d., 1/- buff, 'B53' cancels, above average	£15
190	★ 1863-72, Crown CC 1d. purple-brown (S.G. 56), block of four and 3d. dull red (S.G. 61a), block of eight (small tone), both fresh o.g.	£20
191	★ — 1d., 2d., 3d., 6d. green, 1/- yellow, orange and 5/- bright mauve (S.G. 56, 59, 61a, 64, 68, 69, 72), fresh, unused or part o.g.	£20
192	★ — Prepared but not issued ½d. on 9d. (S.G. 74), fresh, wing margin, a few short perfs., fine (Plate 8)	£20
193	★ 1876, ½d. on 9d., ½d. on 10d., 1877 ½d. on 10d., 1/- on 5/-, 1878 2c. (S.G. 76, 77, 79, 82, 83), fresh, unused or part o.g.	£12
194	★ 1878, 4c. on 1d. to 2r. 50c. on 5/- (less 25c.) (S.G. 84-91), also 38c. on 9d. block of eight, mostly fresh, part o.g.	£20
195	★ 1879-80, 2c. to 2r. 50c. (S.G. 92-100), also S.G. 101, 102, 103, 107 and 110 to 114, fresh, unused or part o.g.	£20
196	★ 1891, Surcharged 2c. on 4c. 'surcharge double', 'surcharge double, one inverted', 2c. on 17c. 'surcharge double' (S.G. 117b, c, 118a), also set of four (S.G. 117-120), unused or part o.g.	£30
197	★ 1893 to 1910, range of unused or part o.g. incl. 1899 6c. on 18c. 'surcharge inverted' and 1910 values to 10r., o.g.	£30
MONTSERRAT		
198	★ 1903-08, 5/- (S.G. 33), also ½d. to 1/-, 2/6, fresh, large part o.g.	£15

NATAL

Lot		Estimated Value
199	★ 1902-03, 10/-, £1 (S.G. 141, 142), fresh o.g.	£16
200	○ — £1/10, £5 (S.G. 143, 144), both lightly cancelled	★ £24
201	★ 1904-08, £1/10 (S.G. 162), good colour, a few light perf. tones, fresh, part o.g. (Plate 8)	★ £150
202	★ 1908-09, 10/-, £1 (S.G. 170, 171), hinge remainders, fresh, large part o.g.	★ £36
203	★ — £1 (S.G. 171), hinge remainder, fresh, large part o.g. (Plate 8)	★ £30

NEW ZEALAND — VICTORIA LAND

204	△ 1911 <i>Scott Expedition</i> , ½d. (S.G. A2), tied on piece by Expedition c.d.s. JA 18/13 and then affixed to official certificate, fine, also 1d. (S.G. A2) used in the same manner	★ £40
-----	--	-------

NORTH BORNEO

205	☒ 1892-93, 1c. on 5c. (S.G. 64), marginal strip of four on envelope to Kinabatangan, neatly cancelled, SANDAKAN/3/MAY/1893 c.d.s. alongside, very fine	★ £40
-----	--	-------

NORTHERN NIGERIA

206	★ 1910-11, ½d. to 10/- (S.G. 28-39), fresh set, 10/- one or two faint gum tones, fine o.g.	★ £8
-----	--	------

NOVA SCOTIA

207	★ 1851-57, 1/- purple (S.G. 8), very rare, unused, large even margins, small surface mark below 'V' of 'NOVA', brilliant colour (Plate — Back Cover)	★ £500
-----	--	--------

NYASALAND

208	★ 1891-95, £5 (S.G. 16), good colour, slight perf. discoloration at right and small tone, part o.g., also 2d., 4d., 6d. (both shades), 1/-, 2/6, 4/-, 10/-, part o.g. (Plate 8)	★ £65
209	★ 1895, £25 (S.G. 31), brilliant colour, small nick at right and slight creasing, fresh, hinge remainder, part o.g. (Plate — Back Cover)	★ £275
210	★ 1903-04, 1d. to £1 (S.G. 59-66), set of 9 in fresh o.g. blocks of four, scarce (Plate 4)	★ £165
211	★ — £1 (S.G. 66), fresh, also 1d. to 1/-, 4/-, 1908 ½d., 1d., 3d., 4d. and 1913 to 4/- complete with shades, o.g. or large part o.g.	★ £30
212	○ — £1 (S.G. 66), fine used (Plate 8)	★ £20
213	★ 1908, £1 (S.G. 81), little surface rubbing, fine o.g. (Plate 8)	★ £34
214	★ — £1 (S.G. 81), as fine, part o.g.	★ £34
215	★ 1913-18, £10 (S.G. 99), rich bright colour, slight diagonal crease, fine, large part o.g. (Plate 9)	★ £250

RHODESIA

216	★ 1892, 1d. (S.G. 1), sheet of 60 on thick paper with imprint, o.g.	★ £18
217	★ — 2/6 grey-purple (S.G. 6), sheet of 60 with paper makers watermark 'Pure Linen etc.', slight creases, fine o.g., scarce	★ £165
218	★ — 2/6 purple (S.G. 7), sheet of 60 with watermark, fine	★ £165

Rhodesia continued

Lot		Estimated Value
219	★ 1892, £10 (S.G. 13), fresh o.g. pair, good colour, few uneven perfs., fine, signed A. Diema (Plate 9)	★ £400
220	★ 1892-94, ½d. dull blue and vermilion (S.G. 18), sheet of 60 with part of Collins wmk. monogram, last vertical row has 'dot in left supporters tail'	★ £12
221	★ — similar sheet in a slightly different shade	★ £12
222	★ — ½d. deep blue and vermilion (S.G. 19), sheet of 60 with 'Wiggins' watermark and 'Bradbury' imprint, o.g.	★ £12
223	★ — 2d. (S.G. 20), sheet of 60 with 'Bradbury' imprint, fine o.g.	★ £30
224	★ — 4d. (S.G. 22), sheet of 60 with 'Bradbury' imprint, fine o.g.	★ £28
225	★ — 8d. (S.G. 24), similar sheet of 60, o.g.	★ £28
226	★ — 4/- (S.G. 26), sheet of 60, fine o.g., rare	★ £175
227	★ 1895, 2d. (S.G. 27), sheet of 60, fine o.g.	★ £46
228	★ — 4d. (S.G. 28), sheet of 60, o.g.	★ £46
229	★ 1898-1908, £10 (S.G. 93), fine example of this rarity, short perf. at foot, slight gum thin, good colour, large part o.g., B.P.A. Cert. (1969) (Plate — Back Cover)	★ £300
230	★ 1910-16, Perf. 15 ½d. apple-green (S.G. 169), extremely rare block of 16 (2×8), few hinge remainders, fresh and fine o.g., probably the largest remaining unit of this rare shade, R.P.S. Cert. (1969) (Plate 10)	★ £850

SAINT HELENA

231	★ 1856, 6d. (S.G. 1), large margins, fresh, part o.g. (Plate 8)	★ £36
232	★ — 6d. (S.G. 1), almost as fine, part o.g. (Plate 8)	★ £30
233	★ 1861, Clean cut perf. 6d. (S.G. 2), good colour, slight stain but above average, part o.g. (Plate 8)	★ £20
234	★ 1863, Rough perf. 6d. (S.G. 2a), exceptional horizontal block of six, a few light tones, fresh and fine o.g. (Plate 8)	★ £175
235	★ 1863, 1d. 16-17mm. (S.G. 3), fresh block of six, touched in two places and tiny nick at foot, fine, part o.g. (Plate 10)	★ £75
236	★ — 4d. (S.G. 5), large margins, fresh, part o.g. (Plate 9)	★ £30
237	★ 1864-83, 'B' Imperf. 3d. (S.G. 18i), fresh, clear to large margins, part o.g. (Plate 9)	★ £60
238	★ — 'C' Perf. 12½ 2d. 'surcharge in blue-black' (S.G. 27a), fresh and fine unused, very rare (Plate — Back Cover)	★ £200
239	★ 1873-85, Perf. 12½ 6d. ultramarine (S.G. 31), good colour, some perfs. lightly toned, o.g. (Plate 9)	★ £16
240	★ 1884-94, ½d. emerald 'N' and 'Y' spaced (S.G. 35a), fresh, a few perfs. a little short, part o.g., scarce variety (Plate 9)	★ £30
241	★ 1890 to 1908 (S.G. 46-71), complete basic set of 19 incl. scarce 10/-, o.g. or part o.g.	★ £28
242	★ 1908, 10/- (S.G. 71), fresh, large part o.g. (Plate 9)	★ £26
243	★ 1922-27 both wmk., complete set to £1 incl. all shades with scarce 1½d. and 15/-, o.g. or large part o.g., mostly fresh (Plate 9)	★ £100

SAINT KITTS — NEVIS

244	★ 1923 Tercentenary £1 (S.G. 60), also various values to 2/6, o.g. or large part o.g., fresh (Plate 9)	★ £120
-----	--	--------

Saint Vincent continued

Lot

Estimated Value

1863-68 PERF. 14 to 16

- 262 ★ 1/- slate-grey (S.G. 9), beautiful block of four, rich colour, slight stains at top and right—hardly noticeable, fine, part o.g. (Plate 10) £180

1863-68 PERF. 11 to 12½ × 14 to 16

- 263 ★ 1/- slate-grey (S.G. 11), fine, large part o.g. (Plate 9) £26
 264 ★ 1/- slate-grey (S.G. 11), fine and fresh, o.g. (Plate 9) £26
 265 ★ 1/- slate-grey (S.G. 11), rare strip of four, good colour, slight wrinkles, fine and fresh, part o.g. (Plate 9) £120

1869 PERF. 11 to 12½

- 266 ★ 1/- indigo (S.G. 13), fresh, part o.g. (Plate 9) £40
 267 ★ 1/- indigo (S.G. 13), upper right corner copy, superb, large part o.g. (Plate 9) £75
 268 ★ 1/- indigo (S.G. 13), rare marginal strip of four, light wrinkle on one stamp, superb, large part o.g. (Plate 9) £220
 269 ★ 1/- brown (S.G. 14), brilliant and extremely rare block of four, slight gum creasing and staining around perfs., large part o.g., one of the few blocks extant (Plate — Back Cover) £400
 270 ○ 1/- brown (S.G. 14), fine used, also S.G. 4 and 19 used £26

1871 ROUGH PERF. 14 to 16

- 271 ★ 6d. deep green (S.G. 16), fresh, part o.g. (Plate 9) £30

1872 COLOUR CHANGE, PERF. 11 to 12½

- 272 ★ 1/- deep rose-red (S.G. 17), fresh, fine, part o.g. (Plate 9) £60

1872-75 PERF. ABOUT 15

- 273 ★ 1d. black (S.G. 18), block of six, very fresh, some slight toning, very fine o.g. (Plate 12) £40

1872-75 PERF. 11 to 12½ × 15

- 274 ○ 1/- lilac-rose (S.G. 20), quite good colour, attractively cancelled with red c.d.s. (Plate 9) £46

1875 COLOUR CHANGED, PERF. 11 to 12½

- 275 ★ 1/- claret (S.G. 21), good colour, light toning, fine unused (Plate 9) £60

1876-78 PERF. 11 to 12½ × 15

- 276 ★ 1d. black (S.G. 22), rare block of eighteen (6 × 3), fine and fresh o.g. £150

1880 PROVISIONAL SURCHARGE

- 277 ★ 1d. on half 6d. bright blue-green (S.G. 28), left half, good colour, slight toning, fine and scarce, part o.g. (Plate 13) £50

1880 PERF. 11 to 12½

- 278 ★ 1d. olive-green (S.G. 29), block of four, fine and fresh, part o.g. (Plate 12) £50

Saint Vincent continued

Lot

Estimated Value

1881 PROVISIONAL SURCHARGES

279	★	½d. on half 6d. bright green (S.G. 33), right half, fine and fresh, part o.g. (Plate 13)	★	£88
280	★	½d. on half 6d. bright green 'unsevered pair' (S.G. 33a), fresh, fine, part o.g. (Plate 13)		£20
281	★	½d. on half 6d. bright green 'unsevered pair' (S.G. 33a), fine, small thin, part o.g. (Plate 13)	★	£46
282	★	1d. on 6d. bright green (S.G. 34), bright shade, fine, part o.g. (Plate 13)	★	£40
283	★	4d. on 1/- bright vermilion (S.G. 35), good colour, light toning, fine, part o.g. (Plate 13)	★	£46
				£175

1882-83

284	★	4d. ultramarine (S.G. 41), pair, light gum crease, fresh, large part o.g. (Plate 13)	★	£60
-----	---	--	---	-----

1883-84

285	○	4d. grey-blue (S.G. 43a), fine used, scarce stamp (Plate 13)	★	£30
286	★	6d. bright green (S.G. 44), two short perfs., fresh, o.g. (Plate 13)		£30
287	★	6d. bright green (S.G. 44), rare block of four, few trimmed perfs., fresh and very fine, large part o.g. (Plate 12)	○	£125

1885-93

288	★	6d. violet (S.G. 52), upper right corner block of four, superb o.g., brilliant piece (Plate 12)	★	£100
289	★ ○	6d. violet (S.G. 52), also 1d., 2½d.(2), 4d. (2 shades), 5/-, also 1882 1d.(2), 2½d., 1890 2½d. on 4d., 2½d. on 4d. 'no fraction bar', 1890-93 4d. (2 shades), 6d., 1/- and 1892 5d. on 4d., one or two used, rest fine o.g. 17	★	£30

1890-93

290	★	4d. yellow (S.G. 56), two blocks of four and one of six in contrasting shades (not the olive-yellow), fine and fresh o.g.		£12
291	★	1/- orange (S.G. 58), sheet of thirty (10×3) with margins, fresh, fine o.g.	○	£26

LATER ISSUES

292	★ ○	1902, ½d. to 5/- (S.G. 76-84), 1904-11 ½d., 1d., 6d., 1/-, 2/-, 5/- block of four, 1907 ½d. to 3d., 1909 1d., 6d., 1/-, 1909-11 ½d. to 3d. 32	★	£28
293	★	1904-11, £1 (S.G. 93a), good colour, hinge remainder, fine, large part o.g. (Plate 13)		£46
294	★	— £1 (S.G. 93a), fine, large part o.g. (Plate 13)	★	£46
295	★	1913-17, £1 (S.G. 120), corner block of four, fresh o.g. (Plate 14)		£80

SEYCHELLES

296	★	1890-92, Die I, 48c. (S.G. 7), plate block of 24, fresh o.g.	★	£40
297	★	— Die I, 96c. (S.G. 8), plate block of 24, fine o.g.		£64
298	★	1893 Surcharge, 3c. on 4c. 'surch. inverted' (S.G. 15a), fine, light perf. tones, part o.g. (Plate 13)	★	£16

Seychelles continued

Lot

Estimated Value

299	☒	1893, 3c. on 4c. 'surch. inverted' (S.G. 15a), eleven copies on cover front to Paris dated 17 OCT 93, one stamp damaged and another with trimmed perfs., an incredible showpiece (Plate 14)	★ 858 ★ ★	£200
300	★	— 3c. on 4c. 'surch. double' (S.G. 15b), light tones, fine, large part o.g. (Plate 13)	★ ★	£20
301	★	— 3c. on 4c. 'surch. double' (S.G. 15b), in vertical pair with normal, few split perfs., fine, part o.g. (Plate 8)	★ ★	£30
302	★	— 3c. on 4c. 'surch. omitted in pair with normal' (S.G. 15c), complete row of twelve spanning both panes. The surcharge (in groups of six across) has been misplaced to the left on the right pane giving a pair 'with and without', also a single on the left pane 'surch. double' (S.G. 15b), an exceptional piece, o.g. (Plate 14)	★ ★ ★	£275
303	★	— 12c. on 16c. (No. 6) 'surch. inverted' (S.G. 16a), light tones, fresh o.g. (Plate 13)	★ ★	£26
304	★	— 15c. on 16c. (No. 14) 'surch. inverted' (S.G. 19a), fine, part o.g. (Plate 13)	★	£40
305	★	— 15c. on 16c. (No. 14) 'surch. inverted' (S.G. 19a), pair, both with variety, slight creases, fresh, part o.g. (Plate 13)	★	£80
306	★	— 15c. on 16c. (No. 14) 'surch. double' (S.G. 19b), hinge remainder, fresh, part o.g. (Plate 13)	★	£60
307	★	— 15c. on 16c. (No. 14) 'surch. double' (S.G. 19b), superb o.g. (Plate 13)	★	£60
308	★	1896 Surcharge, 18c. on 45c. 'surch. double' (S.G. 26a), light perf. tone, fresh, part o.g. (Plate 13)	★	£50
309	★	— 18c. on 45c. 'surch. double' (S.G. 26a), corner rounded and creased, part o.g.	★	£20
310	★	— 36c. on 45c. 'surch. double' (S.G. 27a), fine o.g., rare (Plate 13)	★	£80
311	★	1901 Surcharge, 3c. on 10c. 'surch. double' (S.G. 37a), fine o.g. (Plate 13)	★	£30
312	★	— 3c. on 16c. 'surch. inverted' (S.G. 38a), fine, part o.g. (Plate 13)	★	£30
313	★	— 3c. on 16c. 'surch. double' (S.G. 38b), fine, part o.g. (Plate 13)	★	£36
314	★	— 3c. on 16c. '3 Cents' omitted (S.G. 38c), light tones, fine unused (Plate 13)	★	£30
315	★	1935 Silver Jubilee 1r. 'extra flagstaff' (S.G. 131a), corner block of four, o.g.	★	£12
316	★ ○	Collection from 1890 to 1906 with 1890 Die I to 96c., Die II to 16c. (block of 6), 1893 surch. set, 1897 to 2r. 25c. incl. 1r. block of 4, 1902 to 45c. on 2r. 25c., Edward issues complete with shades, mostly o.g. 91	★	£58

SIERRA LEONE

317	★	1883, 4d. blue (S.G. 26), exceptional and very rare block of four, fresh and fine o.g. (Plate — Back Cover)	★	£320
318	★	1896-97, £1 (S.G. 53), small remainders, fine o.g. (Plate 13)	★	£20
319	★	1903, ½d. to £1 (S.G. 73-85), fresh set with extra shade of the 5/-, o.g. or large part o.g., £1 has slight crease	★	£30
320	★	— £1 (S.G. 85), fresh o.g. (Plate 13)	★	£30
321	★	— £1 (S.G. 85), fine, large part o.g. (Plate 13)	★	£30
322	F	— £1, the scarce forgery, postmarked	★	£10
323	★	1904-05, £1 (S.G. 98), very fine, large part o.g. (Plate 13)	★	£30
324	★	1907-10, £1 (S.G. 111), fresh, part o.g. (Plate 13)	★	£26
325	★	— £1 (S.G. 111), fine, part o.g. (Plate 13)	★	£24

Sierra Leone continued

Lot		Estimated Value
326	★ 1933 <i>Wilberforce</i> , 2/- (S.G. 177), corner block of four, o.g.	£12
327	★ — 5/- (S.G. 178), block of four, o.g. (Plate 14)	£60
328	★ — 10/- (S.G. 179), sheet number block of four, superb o.g. (Plate 14)	£60
329	★ — £1 (S.G. 180), sheet number block of four, superb o.g. (Plate 14)	£200
SOMALILAND		
330	★ 1904, <i>Official</i> 1r. (S.G. O15), light gum crease, fresh o.g. (Plate 13)	£24
SOUTHERN NIGERIA		
331	★ 1904-11, ½d. to £1, both sets, one of each value (S.G. btwn. 21-44), fine o.g. or part o.g.	£60
332	★ — £1 both colours (S.G. 43, 44), fresh, large part o.g.	£30
TASMANIA		
333	★ 1864-80, <i>Govt. Perf. 12 at Hobart</i> , 6d. dull claret (S.G. 129), upper left corner block of 24, fresh o.g.	£40
334	★ 1892-99, £1 (S.G. 225), fine, faint colour run, o.g.	£15
TRANSVAAL		
335	★ 1903, £5 (S.G. 259), well centred, light gum crease, superb o.g. (Plate 13)	£150
TRINIDAD		
336	★ 1896-1900, £1 (S.G. 124), slight colour run, fresh o.g.	£15
VIRGIN ISLANDS		
337	★ 1866, <i>White wove</i> , 1d. green, deep green, 6d. rose, deep rose (S.G. 1-4), 6d. 'Large V' (S.G. 4a), <i>Toned</i> 6d. (S.G. 7) and pair, one with 'Large V' (S.G. 7a), unused or part o.g.	£60
338	★ 1867-80, specialised range of this issue comprising <i>white wove</i> 1d. blue-green, yellow-green, 1/-, <i>toned paper</i> 1d., 6d., 1/- (blued), 1/-, <i>pale rose paper</i> 4d., <i>buff paper</i> 4d. (both shades), <i>frames superimposed</i> 1/- (three shades), and both <i>retouched frames</i> . (S.G. No's 8, 9, 11, 12, 13, 14, 14a, 15, 16, 17, 18, 19, 20, 21, 21a), generally above average, fresh, unused or part o.g.	£125
339	★ 1879, 1d. yellow-green (S.G. 22a), block of four, fresh, part o.g. (Plate 14)	£40
340	★ 1887-89, 1d. (3), 4d. (3), 6d. (2), 1/- (2), range of shades, also 1888 4d. on 1/-, 1879 1d. wmk. upright, 1880 1d., 1883 ½d. (2), 1d. (2) and 2½d., fresh unused or part o.g.	£20
341	★ 1899, ½d. to 5/- (S.G. 43-50), 2½d. used, others o.g., also ½d. 'HALFPENNY' in pair (S.G. 43a) and ½d. 'HALF PENNY' (S.G. 43b) in block of six which also includes S.G. 43a., o.g.	£30
342	★ — 4d. error 'FOURPENCF' (S.G. 46a), fine, part o.g., rare (Plate 13)	£90
343	★ 1904, ½d. to 5/- (S.G. 54-62), fresh o.g., with additional 3d. and 5/- shades	£20

Friday, 23 November, 1973

WESTERN AUSTRALIA

Lot

Estimated Value

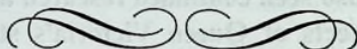
- | | | |
|-------|---|------|
| 344 R | 1857, 6d. sheet of 240 being a reprinted pull taken from the original litho stone which was discovered whilst it was being used as a door stop. Very few pulls were taken | £125 |
| 345 ★ | 1865, 1d. yellow-ochre (S.G. 53), exceptional block of 36 (4×9), fresh and fine o.g., beautiful piece | £150 |

ZANZIBAR

- | | | |
|-------|---|------|
| 346 ★ | 1908-09, 20r. (S.G. 240), marginal, brilliant colour, fresh o.g. (Plate 13) | £30 |
| 347 ★ | — 30r. (S.G. 241), marginal, light gum creases, fresh o.g. (Plate 14) | £50 |
| 348 ★ | — 50r. (S.G. 243), marginal, light creases, fresh o.g. (Plate 14) | £100 |
| 349 ★ | — 100r. (S.G. 244), fresh and fine o.g. (Plate 14) | £150 |
| 350 ★ | — 200r. (S.G. 245), good colour, hinge remainders, fine, part o.g. (Plate — Back Cover) | £250 |

END OF SALE

Please mail bids early in the envelope provided—by Airmail if possible



FORTHCOMING SALES

NOVEMBER 29 - 30 — WHOLESALE

DECEMBER 12 - 14 — BANKNOTES & ALL-WORLD POSTAGE STAMPS

BID QUICKLY AND CONFIDENTIALLY BY 'TELEX'

Your bids can now be received by 'Telex' using the following

'Answer-back code'

'STANGIBBONS LONDON 28883 DH/AUC'

Strict confidentiality of bids guaranteed!

Bids can also be 'Cabled' using our Registered Telegraphic Address

'PHILATORS LONDON WC2'

STANLEY GIBBONS AUCTIONS OF LONDON

Stanley Gibbons
Great Britain Specialised
Stamp Catalogue
Volume 1 (Queen Victoria)
New 4th Edition

Over three years have elapsed since the 3rd edition was published and during that time the interest and value of early G.B. stamps has continued on a healthy upward trend. The three years have also seen continued research and discoveries by specialists into many of the varied aspects of Queen Victoria's stamps.

These points are the main features of the new 4th edition. The very thorough review of all prices — few entries having escaped alteration — together with additional material and illustrations assist in making this catalogue more than ever the worlds foremost guide to early G.B. stamps.

Publication Date: 30th November 1973
Order Now! **Price £3.45**

To Stanley Gibbons Publications Limited,
391 Strand, London WC2R 0LX.

Please send me..... copy(ies) of G.B. Specialised Stamp Catalogue
Volume 1 £3.45 each immediately on publication.

I enclose cheque/P.O. value £.....

NAME.....

ADDRESS.....

London 1064254

AUC/CAT

Conditions of Sale of Stanley Gibbons Auctions Ltd.

subject to which all lots are offered at this auction

NOTICE. *Stanley Gibbons Auctions Ltd.*, the auctioneers, exercise great care to ensure that all statements as to cancellation, centring, colour, condition, date of issue or postmark, gum, margins, perforation, paper, printing, provenance, quality, sheet position, status, use and watermark in the lot descriptions are reliable and accurate, and that each item, unless the contrary is indicated, is genuine and authentic. The statements, however, are not intended to be, are not and are not to be taken to be statements of fact or representations of fact. They are statements of the opinion of the auctioneers, and attention is particularly drawn to clause 6 below.

1.—The highest bidder for each lot shall be the purchaser thereof. Each lot is put up subject to any reserve price imposed by the vendor. If any dispute arises as to the highest bidder the auctioneer shall have absolute discretion to determine the dispute and may put up again and re-sell the lot in respect of which the dispute arises.

2.—(a)The bidding and advances shall be regulated by and at the absolute discretion of the auctioneer, and he shall have the right to refuse any bid or bids.

(b)The purchaser of each lot shall immediately on its sale if required by the auctioneers give to them the name and address of the purchaser and pay to them at their discretion the whole or part of the purchase money. If the purchaser of any lot fails to comply with any such requirement the auctioneers may put up again and re-sell the lot; if upon such re-sale a lower price is obtained than was obtained on the first sale the purchaser in default on the first sale shall make good the difference in price and expenses of resale which shall become a debt due from him.

(c)Where an agent purchases on behalf of an undisclosed client such agent shall be personally liable for payment of the purchase price to the auctioneers and for safe delivery of the lot to the said client.

3.—(a)The auctioneers reserve the right to bid on behalf of clients and vendors, but shall not be liable for errors or omissions in executing instructions to bid.

(b)The auctioneers reserve the right before or during a sale to group together any lots belonging to the same vendor, to split up and to withdraw any lot or lots at the auctioneers' absolute discretion and without giving any reason in any case.

4.—Each lot shall be at the purchaser's risk from the fall of the hammer and shall be paid for in full before delivery and taken away at his expense by a purchaser in the United Kingdom within seven days of the date of sale and by a purchaser overseas within 14 days or such longer time as shall be agreed in writing between the auctioneers and the purchaser. If any purchaser fails to pay in full for any lot within the said time such lot may at any time thereafter at the auctioneers' discretion be put up for sale by auction again or sold privately; if upon such resale a lower price is obtained than was obtained on the first sale the purchaser in default on the first sale shall make good the difference in price and the expenses of resale which shall become a debt due from him.

5.—The auctioneers shall act as agents only and shall not be liable for any default of the purchaser or vendor.

6.—(a)Each lot shall be put up for sale as exhibited, with all faults and errors of description. Neither the auctioneers nor the vendor shall give any warranty to any purchaser or be liable for any fault or error of description or lack of genuineness or authenticity of any lot or item in any lot whether or not exhibited with any certificate of opinion or other supporting document or mark.

(b)Notwithstanding paragraph (a) of this clause, if after the sale the purchaser of a lot shall prove it to be not genuine or not authentic or wrongly described the purchaser shall be at liberty to return the lot provided that he within 21 days of the date of the sale gives notice in writing to the auctioneers of intention to question as the case may be the genuineness or authenticity or description of the lot *and* within 14 days after giving such notice (or, in exceptional cases, such longer time as in the absolute discretion of the auctioneers they may in writing allow) returns to the auctioneers at their salerooms the lot in the same condition as at the date of sale. The onus of proving a lot to be not genuine or not authentic or wrongly described shall lie with the purchaser. Proof of the inability of a recognized expert committee to express a definite opinion shall not discharge such onus. If a lot is sold with a certificate of opinion of a recognized expert committee that the lot is genuine or authentic, a subsequent certificate of such committee that the lot is not genuine or not authentic shall discharge such onus. In the case of conflict of opinion as to genuineness or authenticity or description the auctioneers shall have the right to rely on the opinion of an expert reasonably regarded by them to be a reliable authority.

(c)If the purchaser of a lot shall discharge the onus in compliance with paragraph (b) of this clause the auctioneers shall rescind the sale and repay to the purchaser the purchase price paid by him.

(d)Notwithstanding paragraph (c) of this clause no lot may be returned if subsequent to the sale it has been immersed in water or treated by any other process unless the auctioneers' permission to subject the lot to such immersion or treatment has first been obtained in writing.

(e)A lot listed under "Collections and Various" or a lot stated to comprise or contain a collection, issues or undescribed stamps shall be put up for sale not subject to return and shall be taken by the purchaser with all (if any) faults, lack of genuineness and authenticity, and errors of description and number of stamps in the lot, and the purchaser shall have no right to return the lot.

7.—If a purchaser fails to comply with any condition of sale the damages recoverable by the auctioneers from him shall include any loss arising on, and the expenses of, resale.

Special Notice

1.—Each lot is received in these offices for sale subject to the "Conditions of Sale of Stanley Gibbons Auctions Ltd." and unless the contrary is expressed in writing by the intending Vendor each lot is received in these offices for unreserved sale, and will be sold without reserve. Written instructions as to reserves (if any) must reach these offices at the latest on the day before the date of the sale, and must be confirmed after receipt of advice note.

2.—It is necessary that correspondence from abroad relating to reserves should be in English and the prices in English currency.

3.—The auctioneers will not be responsible for the loss of stamps received inadequately mounted or arranged.

4.—Unsold lots which have not been cleared will, after the expiration of six months, be sold to defray expenses.

5.—Lots bid on and bought in by Vendor will be regarded as sold and liable for full commission.

6.—Settlement is made one month after sale, except when the purchaser resides abroad, when settlement may be slightly delayed. For earlier notification prepaid card should be sent.

7.—"Buy" bids can only be accepted on the condition that the auctioneers' discretion is absolute.

COLLECTION OF LOTS

Will local clients please note that purchases to be collected will be available from 2 p.m. on the Monday of the week following a sale.



Lot	£	Lot	£	Lot	£	Lot	£	Lot	£
198	18	230	750	263	32	294	50	325	19
199	15	231	34	264	34	295	70	326	} 400 to 329)
200	29	232	30	265	200	296	84	330	
202	38	233	32	266	38	297	190	331	21
203	24	234	260	267	290	298	17	332	60
204	48	235	52	268	360	299	360	333	32
205	20	236	27	269	520	300	36	334	38
206	8	238	350	271	38	301	36	335	22
207	750	239	13	272	52	302	460	336	200
208	65	240	26	273	32:	303	37	337	18
209	325	241	26	274	48	304	62	338	76
210	170	242	26	275	50	305	120	339	150
211	24	243	90	276	260	306	75	340	40
212	18	244	145	277	40	307	70	341	23
213	34	245	12	278	180	308	56	342	30
214	30	246	300	279	18	309	17	343	85
215	220	247	190	280	46	310	130	344	500
216	36	248	240	281	48	311	44	345	150
217	120	249	270	282	56	312	44	346	38
218	120	250	100	283	180	313	38	347	60
220	16	251	37	284	115	314	22	348	110
221	16	253	70	285	34	315	9	349	180
222	25	254	200	286	32	317	280	350	330
223	25	256	75	287	125	318	16		
224	32	257	290	288	135	319	33		
225	30	258	250	289	48	320	25		
226	120	259	35	290	10	321	25		
227	70	260	32	291	33	322	17	End	
228	74	261	130	292	37	323	32	of	
229	250	262	410	293	46	324	27	Sale	